

GUARD ARCHAEOLOGY



Phase 1 Curragh (Warehouses 4-9) Archaeological Strip, Map And Sample Excavation Data Structure Report Project 3608

www.guard-archaeology.co.uk

Phase 1 Curragh (Warehouses 4-9)

Archaeological Strip, Map And Sample Excavation

On behalf of: William Grant & Sons Distillers Limited

NGR: NS 2048 0144


Project Number: 3608

Report by: Beth Spence and Maureen Kilpatrick

Illustrations: Gillian McSwan

Project Manager: John Atkinson

Approved by:



Date:

11/04/2013

*This document has been prepared in accordance
with GUARD Archaeology Limited standard operating procedures.*

GUARD Archaeology Limited
52 Elderpark Workspace
100 Elderpark Street
Glasgow
G51 3TR

Tel: 0141 445 8800

Fax: 0141 445 3222

email: info@guard-archaeology.co.uk



www.guard-archaeology.co.uk

Contents

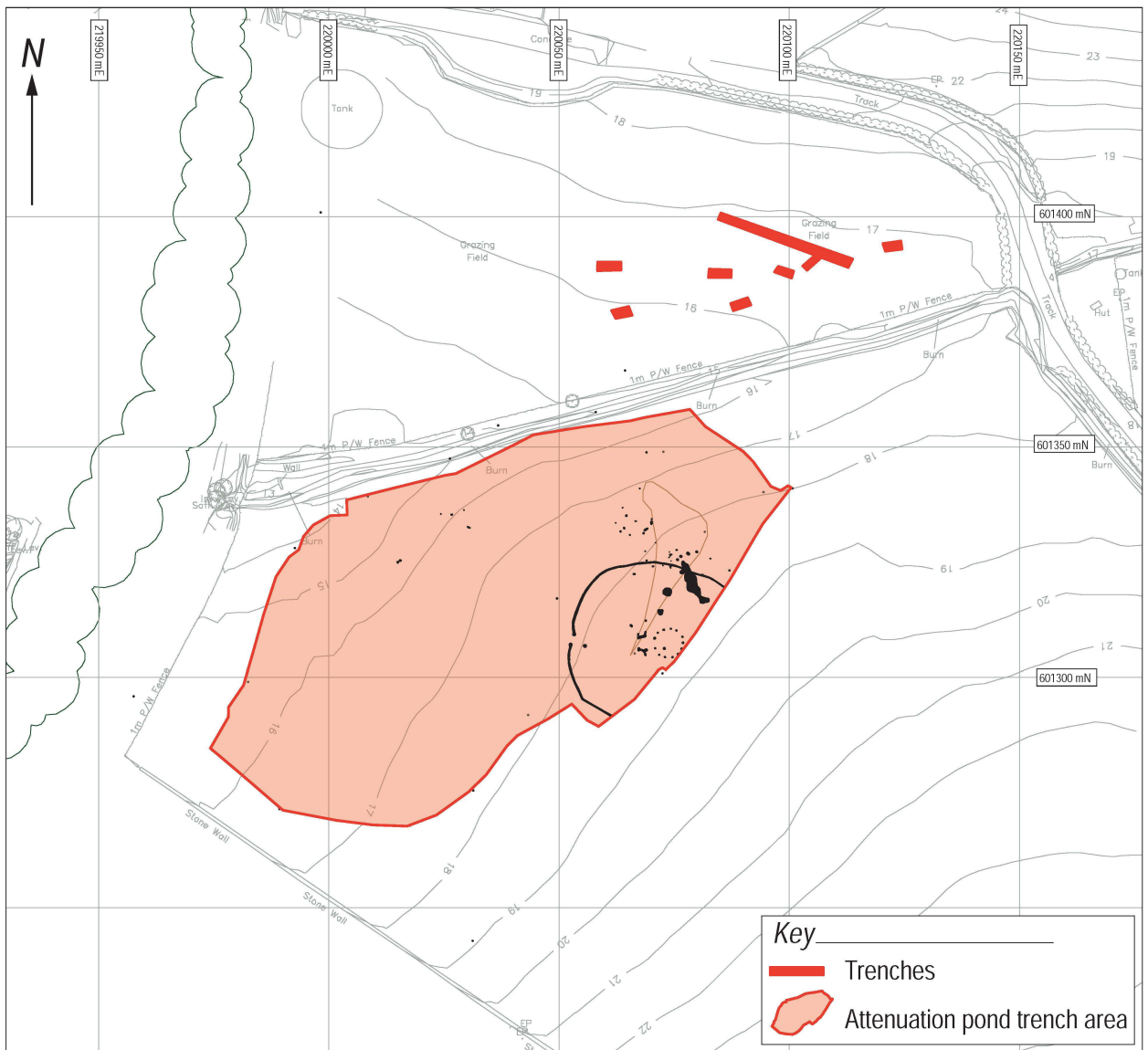
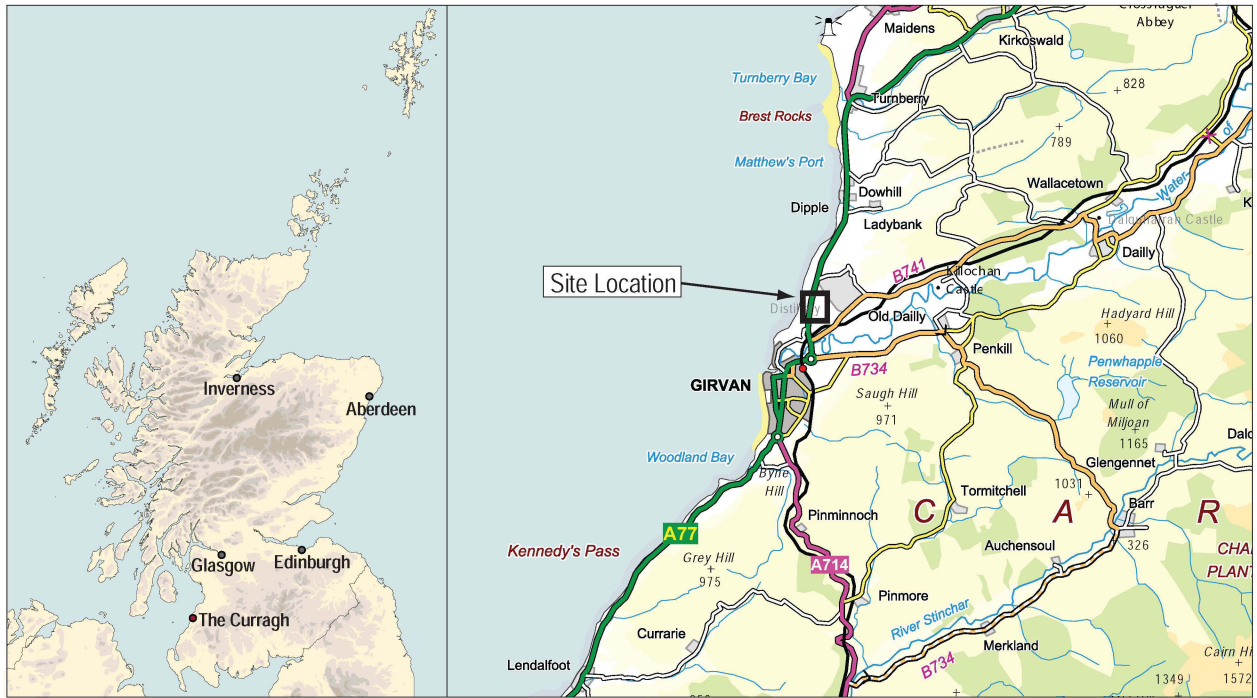
Executive Summary	5
Introduction	5
Site Location, Topography and Geology	5
Archaeological and Planning Background	6
Aims and Objectives	6
Methodology	6
Results	7
Discussion	19
Recommendations	21
Acknowledgements	21
Appendices	23
Appendix A: List of Contexts	23
Appendix B: List of Drawings	34
Appendix C: List of Samples	37
Appendix D: List of Finds	39
Appendix E: List of Photographs	40
Appendix F: Written Scheme of Investigation	52

List of Figures

Figure 1: Site location	4
Figure 2: Post excavation site plan	8
Figure 3: Mid excavation plan of stone features (126), (128) and (187) & South facing section across central area of stones (126)	12
Figure 4: West facing section across pit (181)/(173) and deposit (174) & South facing section across deposit 174 and cut (185) for stones (126)	14
Figure 5: Post excavation plan of Western area features	18

List of Plates

Plate 1: Post excavation view of enclosure	9
Plate 2: Post-excavation view of enclosure terminals	9
Plate 3: Post excavation view of Structure A	10
Plate 4: Mid-excavation view of pit (045) showing pottery	11
Plate 5: Mid excavation view of stones (126)	11
Plate 6: East facing section across stones (126)	11
Plate 7: Rotary quern stone SF 016	13
Plate 8: Peckmarked stones in situ	13
Plate 9: Ovoid macehead (SF 022)	13
Plate 10: Mid-excavation view of stones (187)	14
Plate 11: Occupation/work surface deposit (174)	15
Plate 12: Mid excavation view of stones (128)	15
Plate 13: Bone fragments in deposit (182)	15
Plate 14: Post excavation view of Structure 1	16
Plate 15: Post excavation view of Structure 2	16
Plate 16: Post excavation view of posthole (205) truncating the enclosure	17
Plate 17: Charcoal (095)	19
Plate 18: Adjacent hearth features in Area G	19



Executive Summary

- 1.1 GUARD Archaeology Limited were commissioned by Barr Technical Services on behalf of William Grant & Sons Distillers Limited to undertake the strip, map and sample excavation of the proposed attenuation pond associated with the development of Phase One of warehouse construction at the Curragh, by Girvan. This work commenced on 4 December 2012 with a watching brief during SI works and was then followed by a phase of strip, map sample excavation on 8` December 2012. The works revealed around 60 post and pit features mostly concentrated in the north-east pond area with at least two possible structures represented and what appeared to be a curvilinear enclosure feature; following consultation with WoSAS, it was agreed that the area of stripping be extended in the north and north-east areas into the area of the adjacent access road in order to further clarify and reveal any further features here, and that all features should be 100% excavated.
- 1.2 The subsequent stripping revealed further features including a roundhouse structure situated internally to the enclosure, and what appeared to be three distinct linear stone features which postdate the enclosure, along with further pit and posthole features. Altogether around 85 individual features were investigated across the site. Dating evidence recovered includes sherds of Neolithic pottery, including a substantial portion of a vessel, lithics and a complete stone macehead, along with several fragments of worked and quern stone; these mostly range in likely date from the Iron Age and potentially the early historic period, providing tentative dates for associated features, with the enclosure and internal structure likely representing some of the earlier phases of activity on the site.

Introduction

- 2.1 This report sets out the preliminary results of the strip, map and sample excavation of archaeological remains undertaken by GUARD Archaeology Limited, on behalf of Barr Technical Services for William Grant & Sons Distillers Limited on a site proposed for an attenuation pond required as part of warehouse construction activity in this area. The excavation followed previous archaeological evaluation and sample excavation in 2008 (Sneddon), during which archaeological features were identified within the footprint of the proposed warehouses in areas E and G. The archaeological remains were concentrated largely in the north-east of the pond area, extending into the area of the access road and consisted of an enclosure feature with internal roundhouse structure, three linear stone features, and a concentration of postholes which potentially represent at least two further roundhouse structures; all of these can tentatively be dated to the mid to later Iron Age or early historic period based on form and material culture recovered and suggesting several phases of activity on the site. In addition to this various other features were investigated across the site, including a grouping in the western area.

Site Location, Topography and Geology

- 3.1 The proposed development location lies approximately 4 km to the NNE of Girvan (NGR centre: NS 2048 0144). The pond development area covers approximately 6,000 square metres and sits around 20 m AOD.
- 3.2 The site is largely rural and bounded by a mixture of pasture and arable fields on all sides. The western edge is close to Burnside Nurseries, The Curragh farmsteads and the A77. The southern extent is close to newly constructed warehouses belonging to William Grant and Sons Distillers Ltd.
- 3.3 The southern and south western part of the site is comprised of gently rolling fields, particularly along the edges of the burn that dissects the pond area (Figure 1).
- 3.4 The underlying drift geology consists of boulder clays and raised beach deposits, while the solid geology consists of Old Red Sandstone with a pocket of silt (British Geological Survey 1:63,600, Sheet 7, Drift and Solid).

Archaeological and Planning Background

- 4.1 A review of desk-based sources was undertaken in advance of archaeological trial trenching of the overall building footprint area in 2007 (Shearer & Sneddon) and subsequently reviewed again as part of the Environmental Impact Assessment in 2011 (Atkinson). These reports revealed 20 known cultural heritage sites within a kilometre of the centre of the proposed warehouse development. Within the then proposed site boundary a further three sites were identified from cartographic sources and six during the initial walk-over survey. Only one site previously recorded was located within the site boundary. This was at Ladywell ((NGR: NS 2040 0075) (NMRS site NS20SW 35) and referred to a watching brief carried out in July 1996 during which two flints were recovered and no archaeological features (Shearer & Sneddon 2007, 11).
- 4.2 Since 2007 the centre of the proposed development site has remained largely the same but the boundary has altered in part. Sites recorded within original study area included one scheduled ancient monument (SAM No 5784, NMRS: NS20SW 11, SMR: 5467) within the 1 km assessment zone.
- 4.3 Trial trench evaluation in advance of the earlier phase of warehouse building along the Ladywell Road identified, at one location, an area of potentially significant archaeological remains (Maguire 2008). This area was excluded from further development. A second phase of trial trenching was conducted across the entire footprint of the new warehouse area in 2008 (Sneddon). This revealed a scattering of significant archaeological remains along the west-facing side of the bisecting burn in area E and potentially significant environmental remains in area G. Following on from the EIA in 2011, mitigation was requested in the form of strip, map sample in area E and environmental sampling in area G. As the attenuation pond area had not been trial trenched previously and was also positioned on the west-facing side of the burn, WoSAS requested that strip, map sample excavation would be an appropriate form of mitigation for this area too. Consequently, a WSI was produced for all phases of work that specified the first phase should include work in the area of the attenuation pond.

Aims and Objectives

- 5.1 The project objectives were:
- to establish the presence or absence of further archaeological features within the phase one development site by conducting strip map sample of the attenuation pond area;
 - excavate and record any significant archaeological remains revealed during the strip map sample excavation;
 - conduct a phase of environmental sampling within area G of the development, where it coincided with the pond construction work;
 - undertake funded post-excavation analysis and publication of the results on the archaeological works should they be warranted.

Methodology

Watching Brief

- 6.1 Prior to the topsoil strip commencing, a phase of ground investigation works was planned for the attenuation pond area. In order to reduce the possibility that archaeology may be compromised during this work a phase of watching brief was conducted in support of the site investigation. This revealed no features of significance.

Strip, Map, Sample Excavation

- 6.2 Works commenced with the laying out of the attenuation pond area using a sub-cm differential GPS system. Stripping of this area commenced initially using a 13 tonne backactor with toothless bucket, which was quickly enhanced by the introduction of a second machine to speed things up. After removal of the topsoil, the exposed features were mapped using an R100 Smart Rover DGPS. All features were cleaned and photographed individually and in some cases in groups. All archaeologically significant features were 100% excavated in order to establish their nature, function and relative date, with environmental samples retained from each. A post excavation plan at 1:50 scale was produced of the site as a whole, with significant groupings of features planned at 1:20 scale. All on-site recording, written, drawn and photographic, was to the standards normally pertaining in archaeological fieldwork.

Environmental Sampling

- 6.3 Environmental sampling was also attempted in area G. Initially small trial trenches were placed periodically across the area within the vicinity of the original trenches, however subsequently the original trenches opened in 2010 in this area were plotted using an R100 Smart Rover DGPS, then re-excavated under archaeological supervision using a 13 tonne backactor with toothless bucket. Features encountered were photographically recorded.

Results

Watching Brief

- 7.1 SI pits were excavated using a 0.9 m wide bucket. Initially digging was conducted using a toothless bucket, however it proved impossible to reach the required depths using this and a toothed bucket was therefore used under archaeological supervision. Two ceramic field drains were recorded running south-east/north-west in test pits 6 and 7 respectively. No features of archaeological significance were observed.

Strip, Map, Sample Excavation

- 7.2 The pond was stripped of topsoil, revealing numerous circular and oval features, a curvilinear feature representing a possible enclosure feature and some linear features cut into the subsoil. Two possible roundhouses were discovered at the north and north-east of the pond area, adjacent to the enclosure. The subsequent expansion of topsoil stripping towards the east of this area to include a likely area of construction disturbance further revealed the extent of the enclosure, along with internal structural evidence represented by post holes and pit features, as well as three distinct stones features, with possible occupation deposits concentrated around these.

Enclosure and related features

Enclosure (023)/(024)

- 7.3 The curvilinear feature (023/024) is located to the north-east of the pond area and is only partially revealed within the area stripped, with the maximum diameter revealed measuring around 35 m. Within the exposed extent it appears that the feature follows a trajectory back inwards just beyond the north and south extents revealed, suggesting that the fullest extent could have been represented, although this could not be verified with the feature not fully revealed. Although mostly sub-rounded, the shape in plan was slightly irregular, with an area to the south-east following an almost linear form continuing out with the stripped area. A gap to the SSW represents an entrance at this point, with a posthole at either terminal. The feature was truncated to the north-west by the cut 189 filled with stones (187) and may also have been disturbed at the north-east extent by a possible occupation deposit (182) below a stone layer (128).

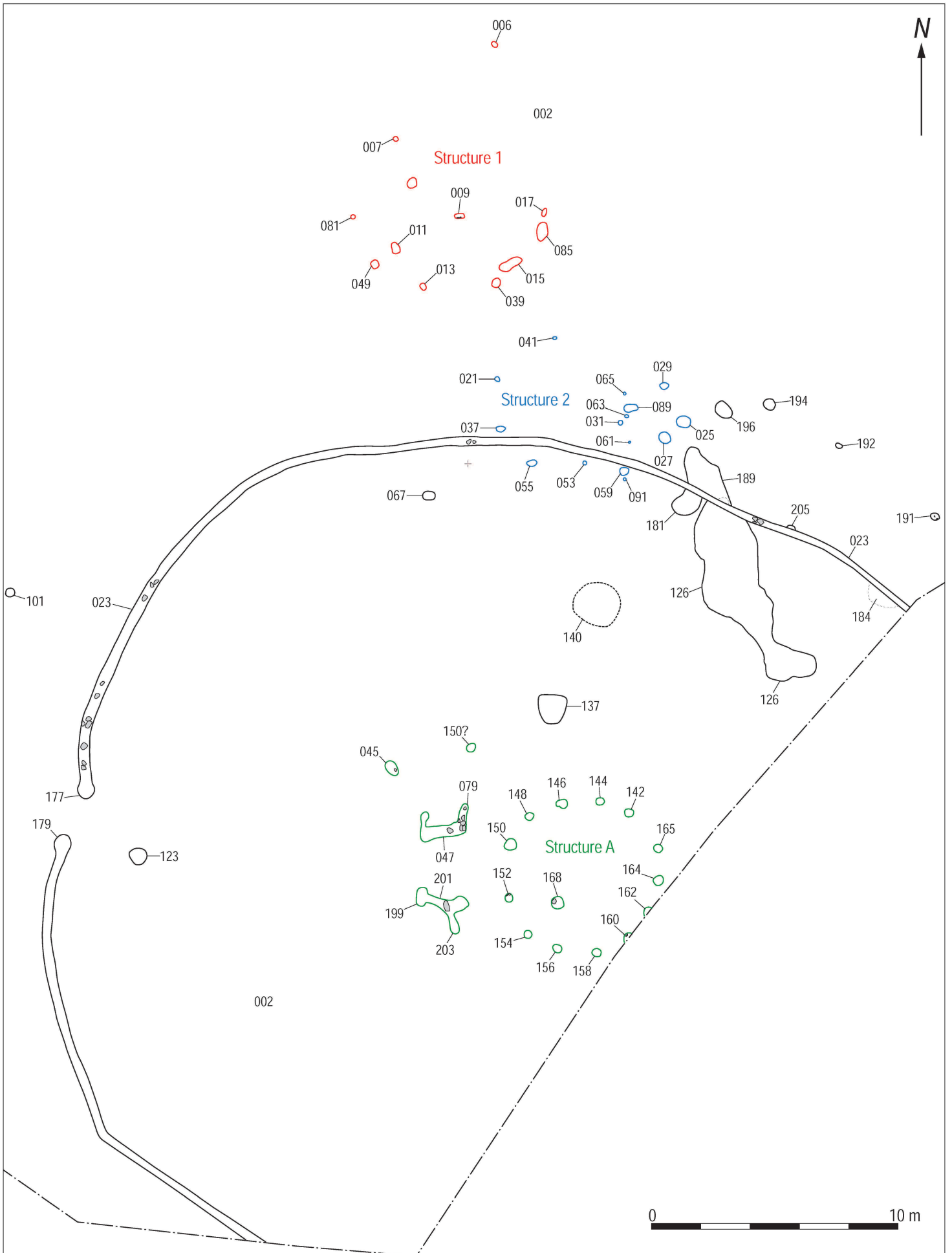


Figure 2: Post excavation site plan.



Plate 1: Post excavation view of enclosure.

- 7.4 The enclosure was excavated first by a series of Slots A-I in order to establish variations in depth and the cut, with samples of the fill (024) retained from each, then by the removal of the remaining fill. The fill (024) is a mid grey-brown sandy silt fill, with frequent small stone and pebble inclusions and infrequent charcoal flecks. The feature varies in depth from around 0.12-0.28 m, and the width ranges between around 0.2 m and 0.4 m, at various points around the excavated extent. The cut (023) is generally steep sided leading to a rounded base, sometimes more 'V'-shaped in narrower stretches. A series of stones were revealed to be set into the base of the feature at various points, ranging from around 0.15-0.3 m in maximum length, sometimes found in clusters, possibly representing some form of packing material, and suggesting that the continuous enclosure slot held either a continuous series of posts, or possibly more likely a form of fencing or planking due to the lack of any identifiable post holes in the base of the slot.
- 7.5 Post holes were incorporated into either terminal of the entrance way. The more westerly of these (077)/(078) measured 0.75 m by 0.6 m by 0.34 m depth with almost vertical cut sides and a U-shaped base; this is a deeper feature than the cut of enclosure (023), and it appeared in section that this may have been subsequently set into the enclosure, although the similarities in fill made this hard to identify with certainty. The more easterly feature (179)/(180) measured 0.84 m in maximum diameter by 0.24 m depth, again with almost vertical sides. Fills were mid and dark brown-grey gravels. It seems likely that these features were incorporated into the terminals of the enclosure to hold structural posts framing the entranceway.



Plate 2: Post-excitation view of enclosure terminals.

- 7.6 Two small finds were recovered from within the fill of slot 024. The first is a sherd of handmade pottery (SF 2) with a well-fired exterior surface and a dark interior surface; the thickness and profile suggest that it is likely to represent a relatively large vessel, and this can be tentatively dated to the later Bronze Age or possibly early Iron Age. The second was a fire-cracked possible worked stone (SF 26) recovered from amongst a cluster of packing stones near the western entrance terminal.

Structure A (Figure 2)

- 7.7 Structure A is represented by a circle of 13 post holes (contexts (142-167)), with a further internal post hole (168/169) situated off-centre to the south-east. Two of the posts forming the circle (160/161 & 162/163) were only partially visible and extended out with the stripped area, however given their proximity to each other it seems likely that these represent the only postholes of the circle not fully revealed. These varied in size from a maximum length of 0.4 m-0.58 m, with one example (146) including a possible indentation for the insertion of a post, and depths varied from 0.1-0.28 m although the majority were around 0.2 m in depth. Most displayed steep or near vertical sides, suggesting that posts were likely inserted at a vertical angle, and rounded or slightly concave bases. Fills mostly consisted of mid to light brown or orange-brown sandy silts with frequent small stone and pebble inclusions and some occasional charcoal flecks; two examples contained slightly larger stones which could have served as packing material. The central posthole was slightly larger in size at 0.56 m, with a depth of 0.3 m; the fill of this was also an orange-brown sand silt, with pebbles, charcoal flecks and 3 cobbles which could have served as packing stones.
- 7.8 In addition to the circle of postholes and central post, there were two features situated immediately adjacent to the west of the circle. These were both irregularly-shaped with sub-rounded and linear aspects, and both were around 2 m in total length with a maximum width of around 0.4 m in the linear section; they were orientated north-east/south-west from the structure towards the enclosure entrance, suggesting they may have framed an entrance way or ancillary structure related to the main structure. The more southerly of these includes three possible postholes (079)/080, 047/048 & 208/209) within a cut which may represent a slot for some form of panelling, along with 5 possible packing stones. The more northerly feature appears to have had a similar function, and consists of a posthole (199), with a linear feature (201) containing a single large possible packing stone, and a further posthole (203) at the far end, which had a continuous slot for inserting a post; again it seems possible that the linear aspect of this may have contained some form of planking. Fills were similar mid grey-brown silty gravels across both features.

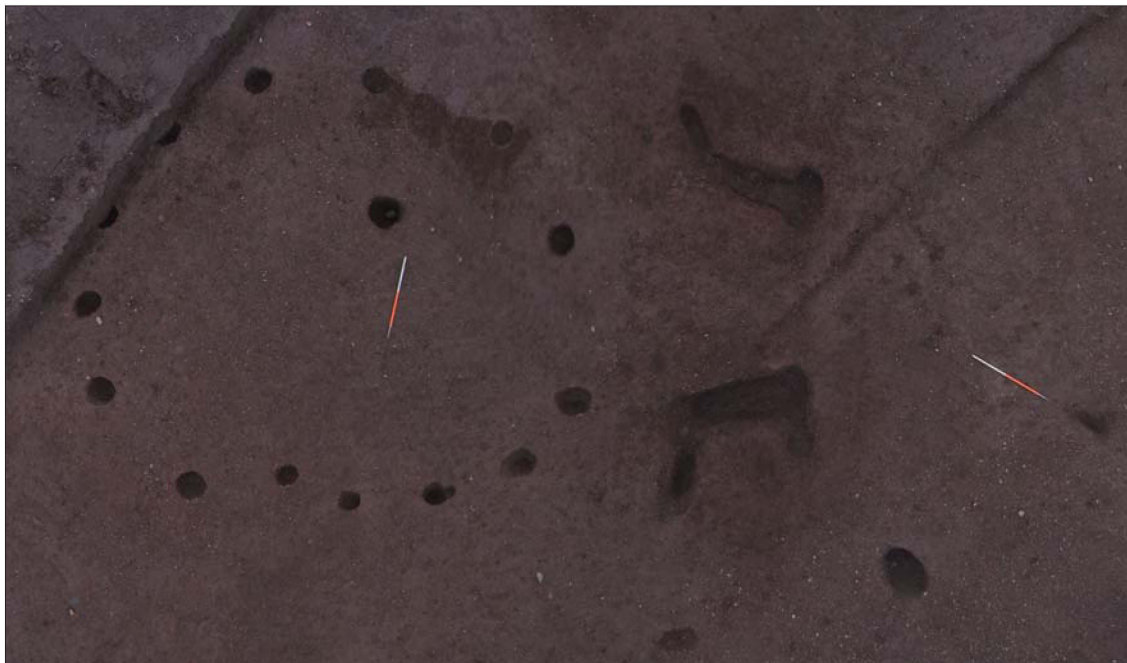


Plate 3: Post excavation view of Structure A.

Other possible related features

- 7.9 Other features situated internally within the enclosure area include several more pit and posthole features including two large shallow pits (033 and 140) both situated within the west/north-west internal area. The pit feature (033) was a large shallow scoop measuring 2.1 m by 1.9 m with a maximum depth of 80 mm, which contained two fills, a mid grey-brown silt

(034) and the underlying mid-yellow sandy silt (141) concentrated in the east of the feature. The pit feature (140) measured 1.12 m by 0.64 m with a maximum depth of 0.12 m; this also contained two fills, the mid grey-brown silt (137) and the lower (138), a similar mid grey-brown silt streaked with yellowish clay; this feature showed evidence of possible trampling to the west, where the extent was subsequently unclear. No material culture was recovered from either of these features, and their function and relationship with the enclosure and each other is unclear; they are also situated to the south of the stone features 126 and 187 and a function related to these is also possible.

7.10 In addition to this, pottery (SFs 07 & 011) and several lithics including two possible flint blades (SFs 08 & 012) were recovered from a steep sided pit (045) measuring 0.76 m by 0.5 m with a depth of 0.3 m. This was situated to the south-west of Structure A within around 2m of the possible panel slot (047) and related features. It contained two fills (046) and the lower (099), a dark brown silt with gravel and charcoal inclusions; it was from within this lower fill that the finds were recovered. The pottery consists of several small sherds of likely prehistoric pottery (SF 07) as well as larger dark body and rim sherds representing the remains of a vessel (SF 011) situated below a stone (SF 15). These finds appear to be domestic in nature and seem to have been intentionally deposited within this pit, although it is unclear whether this may have been as waste material.



Plate 4: Mid-excavation view of pit (045) showing pottery.

Stone features and related deposits (Figure 3)

7.11 Three distinct stone features were revealed within the north-east of the stripped area, with various related deposits also identified. These appear likely to post date the enclosure (023/024), with the later feature comprising stones (187) truncating across the enclosure at the north-west extent.

Linear stone feature (185/126)

7.12 A linear feature consisting of various large stones (126) situated within a wide irregular cut (185), was identified after extension of the original area of stripping had occurred as being orientated roughly east/west. This was around 7.5 m in maximum length and 1.5 m in maximum width. The feature was excavated at first through a series of large slots, leaving strips of baulk across the feature so that sections could be recorded, then by the subsequent removal of all remaining deposits and stones.



Plate 5: Mid excavation view of stones (126).



Plate 6: East facing section across stones (126).



Figure 3: Mid excavation plan of stone features (126), (128) and (187) & South facing section across central area of stones (126).

7.13 The stones lay beneath an upper orange-brown clay deposit (118), which lay sealed beneath the intermediate layer (117) in this area. Deposit 118 was revealed to lie over and around the stones along most of its extent apart from some of the more high lying areas where layer 117 lay directly on the stones, and extended out with the cut for the stones originally obscuring it. This appeared to be a relatively sterile material similar almost to a natural deposit; finds recovered were a sherd of modern ceramic (SF 021) and two possible iron nails (SF 010 & 021). The fact that this deposit lay above and around the stones and out with the cut suggests that this may be material which worked its way around the stones more gradually after their deposition or subsequent to a possible structure falling out of use, rather than an intentional backfill above

the stones. In addition to this two further deposits (127 and 172) were identified, concentrated mostly to the more western extent of the stones. Compact mixed clay deposit 127 surrounded and overlay some of the stones, but was more contained within the cut (185) than layer 118, and could therefore represent an intentional backfill; the only small find recovered from within this was a flint flake (SF 023). Deposit 172 was a mixed red-yellow clay pocket of around 60 mm depth below deposit 127 towards the west extent, lying directly above the lower stones deposit (186); a further possible iron nail was recovered from this (SF 024).

- 7.14 The actual stones varied greatly in size from around 0.3-0.8 m in maximum length and were of various different types and forms, from angular and sub-angular to rounded or sub-rounded. They appear to have survived to only one course, although their arrangement was irregular and various examples were seen to partially overlie others, suggesting that if this was a drystone structure originally built to a higher level it may have been quite heavily disturbed. Indeed it's possible that the reason the stones identified survived is that they were situated within the cut (185); any stones above this level may have been intentionally removed or more gradually truncated. In some cases the stones lay directly on the natural (002), however a lower deposit present below some (186) was very similar to layer 118, and may simply have been an extension of this upper deposit.
- 7.15 One of the most distinct aspects of the feature was that the stones included several fragments of possible quern stone (SFs 029-032) including what appears to be an entire lower rotary quern stone (SF 016). Further to this several potentially worked stones were recovered of various sizes and forms (SFs 027, 028, 033, 034, 036, 041 & 042), representing a significant incorporation of worked stone into the feature.



Plate 7: Rotary quern stone SF 016.



Plate 8: Peckmarked stones in situ.

- 7.16 The most significant small find associated with the feature was the ovoid macehead (SF 22) recovered from deposit 117 amongst the stones towards the eastern extent. Other additional finds included a small burnt flint flake (SF 019) and a sherd of medieval green glazed ceramic (SF 020), also from deposit 117.



Plate 9: Ovoid macehead (SF 022).

Feature 187 and related features

7.17 This was a further apparently linear stone feature comprising the stone layer (187) within cut 189, extending for around 4 m in total length and 0.9 m in maximum width, orientated roughly north-west/south-east. There seem to have been several stages of activity within the immediate vicinity of this area represented by various features and deposits. The cut (189) truncates the enclosure (023/024), although being a deeper deposit this was still visible underlying, however this dates the stone layer (187) as later than the enclosure.

7.18 An oval pit feature (181/173) measuring approximately 1.5 m maximum length by 0.95 m width with a depth of 0.14 m was situated just to the south of the cut (189). This appeared to have been disturbed to the north most likely by the possible occupation or work activity represented by the deposits 174 and 198; this made the relationship with the truncated enclosure (023/024) unclear with the pit feature appearing to slightly truncate the enclosure therefore post-dating it, however given the disturbance it is also possible that it lay immediately adjacent to the enclosure on the internal side. It's therefore unclear whether the pit could have been related to the earlier enclosure. No material culture was recovered.



Plate 10: Mid-excavation view of stones (187).

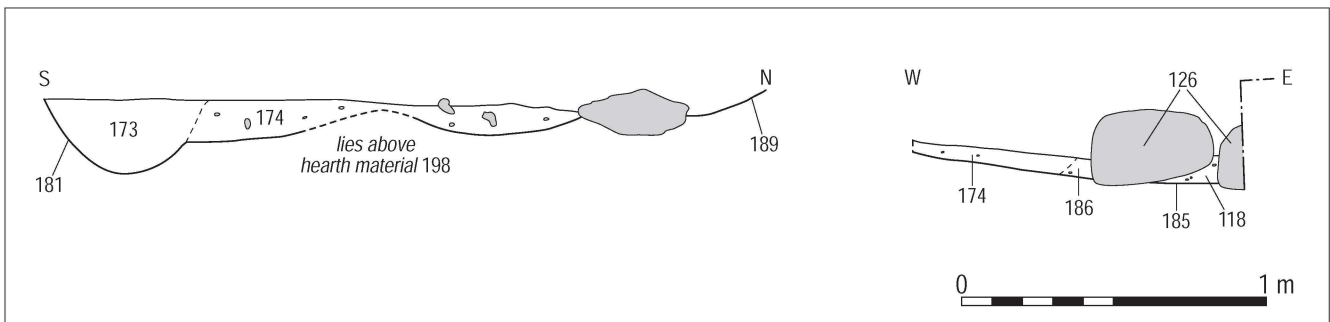


Figure 4: West facing section across pit (181)/(173) and deposit (174) & South facing section across deposit 174 and cut (185) for stones (126)

7.19 Immediately adjacent to the pit were the deposits 174 and 198. Deposit 174 was a very compact mixed clay deposit, almost greasy in texture, with frequent dark mineral and charcoal inclusions, extending for an area of around 1.5 m by 0.95 m to a maximum depth of 0.14 m. As well as partially overlying the pit (181) to the south, this also partially overlay the western extent of the cut (185) for the stones (126) in this area, though not any of the stones themselves. Given the texture and high density of charcoal it's possible that this deposit may represent a potential work surface or occupation deposit concentrated within this area to the west of the larger stone feature (185/126). The lower deposit (198) was concentrated below this, extending to around 0.84 m by 0.65 m to a depth of around 0.12 m. This was of a similar charcoal-rich clay material, and was a mixed black pinkish-brown white-grey in colour, ashy and very greasy in texture; this appears to represent a lower deposit of hearth material. This also overlay pit 181 to the south, but did not appear to extend as far as the cut (185) to the east. Given that the material was similar to and in places mixed with layer 174 it seems possible that although this is the lower deposit it may not pre-date it by much, and may be hearth material deposited not long prior to the formation of the upper work surface representing ongoing activity concentrated in this small area.



Plate 11: Occupation/work surface deposit (174).

- 7.20 The stones (187) appeared to partially overlie deposit 174 to the north. Similarly to stones 126, these were drystone constructed and mixed in size and type from around 0.2 m to 0.7 m, although were generally smaller with most around 0.2-0.3 m in maximum length. Rather than truncate the larger stones (126), the feature appeared to incorporate at least one of these, likely making use of the earlier stones. This could explain why the cut (189) did not clearly appear to truncate the cut (185) at this point, but becomes narrow, closely following the set of the stones. Similarly to layer 126, the stones (187) also included a fragment of quern stone (SF 017) as well as a possible worked stone (SF 040). Again some stones lay directly onto the natural subsoil (002), and the underlying deposit (190) where present was similar to the overlying (118).
- 7.21 Given the proximity and similarities between aspects of the stone features and deposits in this area, it seems possible that the stratigraphy here may have formed over a relatively short period of time. It is clear that the stones (187) appear to be the latest feature represented, however given the concentration of occupation deposits to the south and the fact that several of the stones appeared set into feature 174 it seems likely that they belong to a phase of closely related activity, possibly forming some kind of drystone shelter or barrier connected to the activity represented by the deposits. Less clear is the relationship between the two stone features (126 and 187); although deposit 174 overlies 185, the incorporation of stones from layers 126 into 187 and the similarities in the incorporation of worked stone could suggest a relatively close phase of activity, but could also show the re-use of this original feature within a later stone feature constructed within a similar tradition.

Feature 128 and related deposits

- 7.22 Feature 128 was a smaller concentration of stones to the north-east of the larger stones (126) against the eastern edge of the stripped area, measuring around 1.2 m in length and 1.12 m in width. These were orientated roughly north-west/south-east. The stones were angular and sub-angular in form, and ranged from 0.3 m to 0.7 m in maximum length, although similar to 187 they were generally smaller. These also included a quern stone fragment (SF 035) which was similar in form to that recovered from stones 187. Given the similarities between these two stone features and the fact that they lie on the same orientation and trajectory, there is a possibility that these may originally have been related, although no evidence survives between the two features to substantiate this.



Plate 12: Mid excavation view of stones (128).

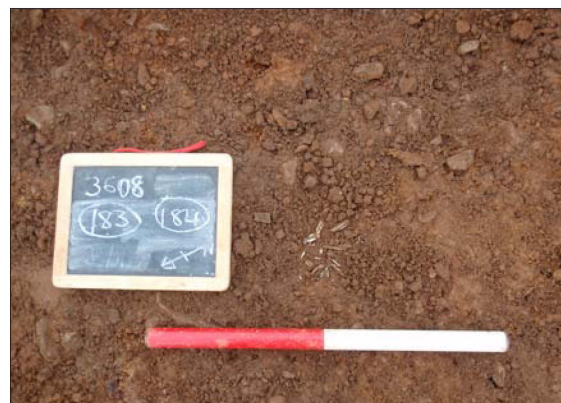


Plate 13: Bone fragments in deposit (182).

7.23 The stones lay above the underlying deposit (182) which was a mid grey-brown sandy silt with charcoal fleck inclusions extending below the extent of the stones. Below this a further deposit (184) was identified; this was a shallow light grey sand-silt with charcoal fleck inclusions, measuring 2 m by 1.2 m with a depth of around 20 mm. This contained several fragments of bone (SF 183) and may represent a possible ground surface or occupation deposit, which appears to have survived due to its location within a natural scoop within the subsoil, and pre-dates stone layer 128. Both this deposit and the stones (128) lay internal to the trajectory of the enclosure (023/024) though seem likely to post-date it; given the irregular nature and smaller number of stones here it seems likely that they have been disturbed, although as this feature was situated against the north-eastern extent of the excavated area it is unclear whether they may have extended to the east.

Other structural evidence

7.24 Several concentrations of postholes were identified within the north-eastern area situated within the vicinity of the enclosure feature (023). Various examples of these could tentatively be suggested to form curvilinear shapes, which could potentially represent structural activity, with various further examples in the immediate vicinities of these representing related or additional activity.



Plate 14: Post excavation view of Structure 1.



Plate 15: Post excavation view of Structure 2.

Possible structure 1 (Figure 2)

7.25 The most westerly of these is comprised of eleven features (007, 009, 011, 013, 015, 017, 039, 049, 081, 083 & 085), all of which represent sub-circular, sub-rounded or oval shaped likely postholes or pits of varying sizes and depths, ranging from around 0.27 m to 0.58 m in maximum diameter. Depths varied from the 60 mm of the shallowest examples (007 and 081) up to the 0.32 m of the deepest (085), however most were around 0.14-0.2 m in depth. These features do not form a clearly regular circle to the extent seen in the internal Structure A, however possible curves are visible such as that formed from the north-east by the features (017, 085, 015, 039, 013, 011 and 083), with feature (009) representing a possible central post of some kind, and leaving the smaller, shallower examples (007 and 081) lying externally to the south-west. Fills (008-018, 040, 050, 082-086) mostly varied from dark to mid grey-brown or brown gravelly-sands and silts, with most examples containing occasional charcoal flecks; no material culture was recovered. The possible pit or posthole (015) contained a higher density of charcoal clumps measuring 30-50 mm within the silt fill (016) as well as orange burnt clay, which may indicate hearth material and in situ burning. Given these indicators of activity around these features and their curvilinear arrangement, it seems possible that some form of structure is represented here, despite the variation in size and more irregular placing of the features making the exact form of this unclear.

Possible Structure 2 (Figure 2)

7.26 The second concentration of features was situated to the east of possible structure 1 and comprised of 16 features (019, 021, 025, 027, 029, 031, 037, 041, 053, 055, 059, 061, 063, 065, 089 & 091), all of which are circular/sub-circular and represent possible post or stake holes.

These vary quite greatly in dimensions from around 0.15 m to 0.55 m maximum diameter. Depths also vary, from the shallowest feature (041) at 50 mm to the deepest (025) at 0.27 m. The features are relatively irregularly spaced; a possible curvilinear form could be tentatively suggested to consist of postholes (041, 019, 021, 037, 055, 053, 031 and possibly including 063, 031)/089 and 065) based on similarities in form and spacing, with the rest of the features concentrated to the east of this and potentially even representing separate activity. Fills (020-032, 038, 042, 054, 056, 060-066, 090 & 092) were represented by mid to dark grey-brown silts, sandy silts, or gravelly silts often with occasional charcoal inclusions; no small finds were recovered from within any of these features.

Additional posthole concentration

7.27 A third smaller concentration of pit and postholes was located immediately to the east of structure 2, to the north-east of the enclosure (023) and stones (126 and 187). This consisted of sub-circular posthole features (192, 194 and 205) and pit feature 196. The oval shaped pit feature (196/ 197) measured 0.8 by 0.7 m with a depth of 0.3 m; the function and relationship of this to the postholes and other nearby features is unclear. The postholes varied from 0.32 m to 0.46 m in maximum diameter, with depths from 0.11 m to 0.2 m. Fills (193, 195 and 129) were mid grey-brown silts and clay-silts. Again the relationship is unclear, although it could be tentatively suggested that the three are situated in a curvilinear fashion and are relatively evenly spaced. Perhaps more significant is the fact that posthole 205/129 was seen to truncate the enclosure (023) on the north-western exterior side, meaning that this feature and any related activity clearly postdate the enclosure.



Plate 16: Post excavation view of posthole (205) truncating the enclosure.

7.28 As stated the forms of any structures represented in the concentrations of postholes and pits described above are not indisputably clear, however it could be suggested likely given the density and arrangement of features that several structures are represented across this area along with additional related activity. The relationship between potential structural activity represented by concentrations of features within this is less clear, although the concentration within this area suggests they are likely related. In addition to this, the relationship between these features and the enclosure (023) is also generally unclear, however posthole 205 clearly truncates the enclosure and several features on the fringes of the central concentration lie internal to the trajectory of the enclosure. This includes two (055 and 053), which could tentatively be suggested to form part of the largely external curvilinear arrangement. It seems possible that a post-enclosure date for some of the activity related to these features may be a possibility; this may be clarified by any future radiocarbon dating achieved from soil samples.

Additional features

Posthole/pit features

7.29 In addition to the concentrations of features to the north and north-east pond area, various other circular and sub-circular features were revealed in other areas of the site. These include a further concentration to the west of the stripped area, which consisted of four features (094, 097, 131 & 136), with a further two located around 10 m to the south-east of these (132 & 134). The postholes (094, 097 and 131) varied in size and form from the smallest (131) at 0.2 m by 0.11 m with a depth of 90 mm to the larger (093) at 0.4 m by 0.37 m with a depth of 90 mm. Feature 093 could represent a possible posthole or pit containing waste material, with the fill

(093) having contained quite a high density of charcoal as well as a small fragment of possible abraded pottery (SF 006); stones in this fill may also have served as packing material. A scoop (136) measuring 0.7 m by 0.53 m with a depth of 90 mm containing a very charcoal-rich deposit (095) was located around 4 m to the north-east of these; the function of this is unclear, but this may be a deposit of hearth material. The sub-circular postholes (132 and 134) were of a similar size at 0.56 m and 0.54 m maximum diameter with depths of 80 mm and 0.1 m; these were situated around 0.25 m apart and given their proximity it seems likely they are related, although their relationship with the features to the north-west is unclear. Although the function of these six features is unclear, they represent a possible concentration of activity in this area of the site in addition to the more extensive concentration of features in the north-east area.

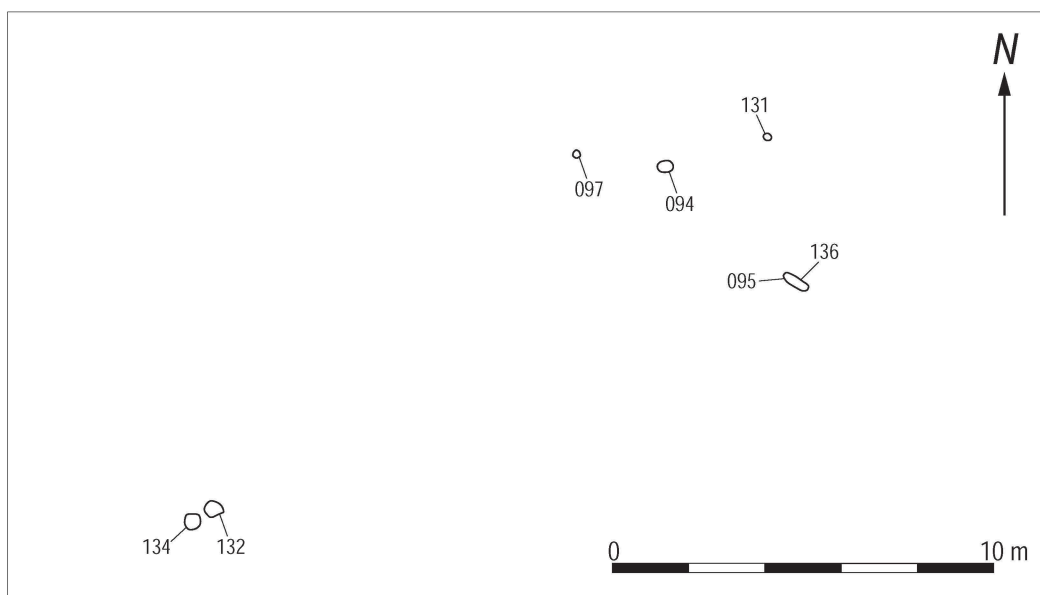


Figure 5: Post excavation plan of Western area features.

7.30 Various other features were located across the site where a relationship was less clear. These included a small irregular spread of charcoal-rich material (191) located to the north of the enclosure (023) and stones (126) measuring 0.7 m by 0.35 m with no distinguishable cut, as well as a shallow charcoal deposit (102) measuring 0.38 m by 0.28 m with a depth of only 30 mm which may have been the truncated base of a pit. Other pit and posthole features (051/052), (067/068/100), (098/101), (119/120), (121/122), (123/124), (125/111), (206/207) were noted as not clearly related to, or located within, the vicinity of other clusters and varied in size and form. Posthole 051/052 measured 0.46 m by 0.36 m with a depth of 0.11 m with dark sandy silt-gravel fill and was located within the vicinity of pit 045 and Structure A, however any relationship between these features is unclear. Posthole or pit 119/120 was a small feature 0.3 m by 0.33 m by 0.14 m depth which appeared to have been heavily truncated, (121/122) was a small posthole with a dark sandy fill measuring 0.16 m by 0.16 m by 0.14 m. Feature 125/111 was a posthole measuring 0.28 m by 0.24 m by 0.11 m depth with a dark grey sand-gravel, and the small posthole 206/207 measured 0.7 m by 0.4 m by 0.12 m depth with a dark grey silt fill. A relatively large pit feature (123/124) was located within the south-west area of enclosure (023), although the relationship was unclear. This was oval in shape and measured 0.82 m by 0.66 m by 0.3 m depth, with a dark gravel-silt fill. Pit or posthole 101/098 measured 0.46 m by 0.44 m with a depth of 0.13 m and a mid beige-brown gravel fill. Finally a relatively small pit feature (067) measured 0.53 m by 0.45 m with a depth of 0.17 m and contained two fills (068) of mid grey-brown silt-sand (100) and brown gravel; No material culture was recovered from the fills of any of these features which could be used to clarify functions or feature relationships.

Linear Features

7.31 Various linear features were visible across the site, particularly concentrated to the west side where the ground slopes quite sharply down towards the burn and various field drainage systems were visible. A more ephemeral feature to the south of the enclosure (023/024) was also investigated and disregarded as likely modern drainage. The only linear feature of note

(035/036) was a shallow feature, around 80 mm in maximum depth and 0.5 m in width and only visible intermittently running north-west/south-east across the eastern area of the site. This appeared to be the remains of the base of a likely modern furrow or field drain, and appeared to overlie and slightly truncate the enclosure (023), although this was not clear due to the ephemeral nature of the feature at this point.



Plate 17: Charcoal (095).



Plate 18: Adjacent hearth features in Area G.

Deposited Material

7.32 A deposit of dark material initially identified to the west of the site was subsequently disregarded as material deposited through a deviation to the burn, which had formed a palaeo-channel in this area of the slope..

Environmental sampling in Area G

7.33 The environmental sampling in Area G did not reveal any organic deposits similar to those described in the 2008 evaluation phase of work (Sneddon), with all of the trial trenches and then the subsequent re-excavation of the original trenches revealing only 0.3-0.5 m of topsoil onto a sandy-gravelly-clay pinkish grey subsoil. No samples were therefore retained from this area. Two likely hearth deposits were revealed, which were both oval in shape and consisted of burnt orange charcoal and clay, likely representing in-situ burning – these were of similar sizes, around 0.6 m by 0.3 m and were photographically recorded.

Discussion

- 8.1 Several features and groups of features of archaeological significance were identified, investigated and recorded during the strip, map and sample investigation as detailed above, the most significant of which were concentrated in the north-east pond area.
- 8.2 Several phases of activity are represented by the possible structural evidence recovered from the Curragh. The recovery of sherds of what appears to be early Neolithic pottery and lithics from pit 045 together with a complete ovoid macehead seems to support the view that a phase of occupation of this landscape occurred during early prehistory. In addition to the early prehistoric evidence, the presence of palisaded enclosure (026) represents what is probably the main phase of occupation of this site. The exact date of that occupation is unclear given that relatively little material culture was recovered, however the single sherd of pottery from within the enclosure fill (024) is suggestive of later prehistoric dating for the enclosure and possibly the remains of structure A. In morphological terms, the grouping of palisade and roundhouse suggests a relatively domestic use to the settlement activity. It is however worth noting that the palisaded nature of the site would have been quite visible in the landscape, and the large and unusual framing to the entranceway at the west of Structure A created a channelled sight line from within this structure through the entranceway of the enclosure towards the distinctive form of Ailsa Craig to the west; this is no longer visible from the site due to a disused railway embankment. Post-excavation analysis of the samples recovered from the palisade and structure, combined with the artefacts recovered should cast light on the precise dating of this putative late prehistoric farmstead.

- 8.3 The concentrations of postholes to the north and north-west of the enclosure are perhaps the most problematic in terms of dating; no material culture was recovered from the fills of any of these to give an indication of date, and as discussed above the form of the potential structures represented is not clear, although possible roundhouse structures can be suggested. Again it is possible that there may have been settlement activity around these features, with various examples containing charcoal and pit 015 representing a possible hearth; although the relationships between the groupings is also unclear, it seems likely given their proximity that they may be related. Dating may be clarified by post-excavation sample processing to recover suitable datable material, however it is worth noting the truncation of the enclosure by posthole 205, suggesting that some of the activity represented by these features may post-date the use of the enclosure. Given this it seems that a possible later Iron Age date could be tentatively suggested.
- 8.4 The stone features would appear stratigraphically to represent some of the latest activity on the site, with the linear arrangement of stones (126) appearing to be the earliest of these. This differed in character from other stone layers (187 and 128) in being constructed of larger boulder like stones, which based on the extent revealed, appear to have formed a more substantial structure. The inclusion of various worked stone within this feature is one of its most notable characteristics. The quern stone fragments suggest a connection to possible milling activity in the adjacent structures; again post-excavation soil processing and ecofact analysis may further understanding of these layers. The discovery of the ovoid macehead was the most significant small find recovered, this being an object potentially of some status. Although within the upper deposit 117, which also contained potentially more modern finds such as a glazed ceramic sherd, this was situated well within the stones themselves and seems likely to have been deposited with the surrounding stones, although how long after its original manufacture is unclear. The presence of the iron fragment in the lower fill should also be noted. Given the nature of the material culture and the fact that the feature was sealed by the upper deposit (117) a possible late Iron Age or early historic date could be suggested here; post-excavation specialist analysis of the artefactual evidence will hopefully further clarify dating.
- 8.5 Adjacent to the north-west, the stones (187) were seen to stratigraphically post-date the stones (126) due to their situation above the deposit (174) which overlay the cut for the larger stones (185). They also differed in form, being generally of a smaller and more uniform size, although the stones still varied. However it could be seen that the construction of the stones echoed that of the larger stone layer (126) in the incorporation of worked stone and quern stone fragments, although notably the quern stone fragment here appeared slightly different in form, being of a flatter and more regular circular shape; again post-excavation specialist analysis may further clarify likely dating here. However, the similarity in building tradition, along with the fact that the feature appears to incorporate stones from layer 126 suggests that this feature may not have post-dated it significantly; it is possible that smaller stones could have been taken from the larger structure to aid in the construction of the smaller feature accounting for what appears to be a higher concentration of large stones in layer 126, although there was no evidence to substantiate this. The construction of the smaller feature may be related to the adjacent and partially underlying surface (174) along with the lower hearth deposit (198); generally it appears that there was a concentration of activity in this fairly small area possibly of a domestic or industrial nature, and as discussed above it is possible that the stratigraphy here developed quite rapidly.
- 8.6 The smaller stone feature (128) is more problematic in that the relationship between this and the other stones is unclear and the extent it likely unknown however, as discussed above, it appeared more similar in form to the later stone layer (187). The presence of the possible old ground surface (184) is also an indicator of potentially earlier activity in this area, in this case potentially pre-dating the upper stones more significantly.
- 8.7 In addition to the features in the north-east area, the only other grouping of note was potentially seen in the western concentration, where the likely postholes, and the possible hearth material represented in the deposit (095) could suggest further activity concentrated in this area, although the nature of this and the relationship with the more north-easterly structures is unclear; again any dating achieved from post-excavation archaeo-botanical analysis may clarify this further.

8.8 Overall, it appears that the features investigated across the site indicate various phases of activity here. In the north-east area the structures and features can be tentatively dated stratigraphically and through the material culture recovered to suggest several phases of activity at least some of which may be successive, ranging from the Neolithic across the Iron Age and potentially into the early historic periods.

Recommendations

9.1 The archaeological remains found in the area of the attenuation pond indicate that the site was occupied during early and later prehistoric times. In line with the agreed Written Scheme of Investigation (WSI) for Phase 1 of the development at the Curragh, it is likely that West of Scotland Archaeology Service (WoSAS) will require the following strategy to be implemented:

- A programme of post-excavation analysis and publication should be undertaken in line with a post-excavation research design (PERD) agreed between the developers and the Planning Authority and submitted as an addendum to the WSI.
- Any further ground-breaking works within the vicinity of the attenuation pond should be accompanied by an archaeological watching brief, particularly where the works are likely to encounter deposits potentially associated with this site. This should include areas of the phase 3 development area bordering the attenuation pond and areas within Area G immediately adjacent to the attenuation pond area.
- In addition to the above it should be stressed that further strip, map sample excavation will be necessary during the following phases of the project:
 1. Prior to phases 2, 3 and 5 of warehouse building within the vicinity of Area E, a programme of strip, map sample excavation will be necessary.
 2. Prior to phase 3 commencing in area G a programme of strip, map sample excavation will be necessary to allow environmental sampling to be completed.

Acknowledgements

10.1 GUARD Archaeology would like to thank Barr Technical Services and William Grant & Sons Distillers Limited for their assistance. Plant and drivers were supplied by Barr Technical Services. Technical support was from Aileen Maule and John Kiely. A survey of the site and the archaeological features was conducted by Fiona Jackson. The illustrations were produced by Fiona Jackson and Gillian McSwan. This report was desk-top published by Gillian McSwan. The project was managed for GUARD Archaeology Ltd by John Atkinson.

Phase 1 Curragh (Warehouses 4-9)
Archaeological Strip, Map And
Sample Excavation

Section 2: Appendices



www.guard-archaeology.co.uk

Appendices

Appendix A: List of Contexts

Context No.	Area	Type	Description	Interpretation
001	-	deposit	Moderately compact, mid grey-brown silt, frequent small stones, pebbles, occasional dark mineral flecks, small root inclusions, 0.27-0.35m depth	Topsoil – quite consistent across the site
002	-	deposit	Moderately to heavily compacted orange-brown sandy silt clay, gravel, frequent small stone, pebble, larger stone <10cm inclusions, also pockets of natural dark gravelly deposit visible throughout.	Subsoil – mottled gravel, sand, clay
004	-	deposit	loose, brittle, dark blackish grey sand-gravel, small to medium sized stone and charcoal flake inclusions, 0.33x0.27x0.03m	Deposit of vary dark organic matter mixed with sand and flakes of charcoal
006	-	deposit	Firm mid brown grey clay silt with gravel, charcoal, clay inclusions, 0.34m N-S 0.35m E-W x 0.09m, not truncated	Initially thought to be a post hole, this is more likely a spread, possible archaeological as it contained some flecks of charcoal and orange clay which could be highly degraded ceramic, however it is also possible that this is just trapped topsoil.
007	-	cut	Rounded-oval in plan, 0.29x0.25x0.06m, gradually sloping sides leading more sharply to V-shaped base, longest NE-SW, perhaps slightly truncated by topsoil stripping, fill (008), cut more distinct towards centre base.	cut of a possible circular feature – may be the base of a posthole, but given that the cut is very ephemeral at furthest extent, this may also be a natural feature eg result of burrowing/stone hole with trapped fill. Other nearby features which are likely postholes are more substantial in depth.
008	-	fill	Loose-moderately compact, mid grey brown, gravelly silt with frequent gravel, small stone, pebble and small root inclusions, 0.29x0.25x0.06m, possible burrowing/ bioturbation contamination	fill of a possible circular feature, possible base of a posthole – see [007] – fill appears relatively sterile, possibly supporting the suggestion that this may be a natural feature caused by eg burrowing.
009	-	cut	oval in plan, 0.48x0.35x0.14m, U shaped gently rounded sides, leading to an almost flat base, no obvious angle of inclination, fill (010)	Cut of a possible posthole – appears to be associated with [083]/(084), [007]/(008) as they are situated close by and arranged in a curve going from NW-NE – very shallow, fill (009).
010	-	fill	loose, mid brown-grey, silty gravel, with pebble and few charcoal fleck inclusions and possible packing stone 0.15m length, some manganese, 0.48x0.35x0.14m, single burnt stone found on the surface of the fill, feature is very shallow.	Fill of a possible posthole, cut [009], possibly associated with nearby features, possible packing stones present.
011	-	cut	circular/oval in plan, 0.55x0.43.0.14m, gradual, gently sloping sides, aligned N-S, fill 012	Cut of a possible shallow post hole, near (013) to the east.
012	-	fill	Compact, dark brown sand gravel, small to medium stone, few charcoal flakes, 0.55x0.43x0.14m	Possible post hole fill (011)
013	-	cut	Circular, 0.38x0.38x0.14m, sharp sides leading to concave base, orientated E-W	Cut of possible post hole – very shallow
014	-	fill	loose, mid-brown-purple, silt clay, fine root and charcoal inclusions, 0.38x0.38x0.14 m	Fill of post hole (013)
015	-	cut	sub circular-oval, 0.73x0.61x0.20m, sharp vertical sides leading to flat base, NE-SW aligned, contains charcoal clumps	Cut of post hole or possible pit
016	-	fill	Loose dark brown with a grey hue, silt clay, fine root, small stone, charcoal inclusions, 0.73x0.61x0.20m depth	Fill of possible pit or post hole with some charcoal and orange clay – possible indication of burning. Cut (015)

Context No.	Area	Type	Description	Interpretation
017	-	cut	oval shape in plan, 0.40x0.30x0.07m, gradually sloping sides leading to irregular oval base, orientated N-S, fill (018)	Possible posthole cut – [085] only 0.26m to the north.
018	-	deposit	Hard greyish brown sand-gravel, small to medium sized stones and flakes of charcoal, 0.40x0.33x0.07m	Fill of a possible posthole
019	-	cut	Circular, 0.36x0.30x0.16m steep slightly sloping sides leading to gradual concave base	Cut of a post hole – slope is slightly less severe at the Ne end – one in a series of post holes possible forming a structure.
020	-	fill	fairly compact greyish-brown silt, small no of pebbles and charcoal rich inclusions, 0.36x0.30x0.16m	Fill of a post hole – fairly sterile, one of a series of post holes forming a curve and may be part of a structure. Cut (019)
021	-	cut	Circular, 0.24x0.20x0.18m, steep break of slope with steep sides, base slightly concave, NW-SE orientation, vertical axis	Possible post hole probably related to other nearby features and linear feature (023).
022	-	fill	loose, grey brown sandy silt, small stone inclusions 0.02-0.03m, 0.24x0.20x0.18m	Fill of post hole (021)
023	-	cut	Large curvilinear feature, varies in depth from 0.12-0.28m, in width from 0.20-0.40m, max diameter of feature curve is approx 35m.	Cut of enclosure feature, likely palisaded enclosure, with internal structure – only partially revealed by stripping. Truncated by stone features to the north.
024	-	fill	moderately compact mid grey-brown sandy silt, occasional-moderate small irregular stones, infrequent charcoal flakes, also occasional groupings of possible packing stones 0.15-0.30m max length.	Fill of curvilinear feature (023)
025	-	cut	Almost circular in plan, 0.53x0.43x0.27m, sharp top break, steep vertical sides, leading more gradually to a rounded base – U shaped, longest E-W, appears vertical, appears vertical in axis inclination, fill (026) located next to [027]/(028)	Cut of a likely posthole – relatively deep with vertical sides located next to similarly sized [027]/(028),, but much deeper and with a distinct fill – part of a possible small post hole circle adjacent to larger circle – would be largest/deepest example if this is the case. Cut at the base forms what appears to be almost another curvature – this could represent the base of where a post sat, but could also just be a result of burrowing – fill becomes a little more mixed with natural at this point – does not appear to extend as a separate feature.
026	-	fill	moderately compact-loose, dark grey-brown gravelly silt, frequent stone inclusions sub-angular <7cm, pebbles, occasional charcoal flecks, 0.53x0.43x0.27m, possible bioturbation/burrowing contamination.	Fill of a likely posthole – cut [025], located adjacent to [027]/(028) but fill is darker in colour, appears more organic. Very gravelly, similar to surrounding natural. Although the cut [025] forms a further curvature in the base of the feature, there is no distinguishable change of fill.
027	-	cut	Rounded-oval in plan, 0.55x0.41x0.08m, shallow gradually sloping sides leading to a gently rounded, almost flat base, longest E-W, appears vertical, but very shallow to tell with certainty, perhaps slightly truncated by topsoil stripping, fill (028), located next to post/stakehole [025]/(026)	Cut of a posthole – may have been slightly truncated by topsoil stripping, but would still seem shallow – possible the base of a feature, could also be a shallow pit. Similar in dimensions to adjacent [025] but much shallower and fill seems more sterile – possibly unrelated. Part of a possible small curve of circular features to NE of site. Cut becomes quite ephemeral to the E – clearest to the S.

Context No.	Area	Type	Description	Interpretation
028	-	fill	moderately compact mid grey-brown sandy silt, frequent small stones, pebbles, occasional charcoal fleck inclusions, 0.55x0.41x0.08m, possibly affected by bioturbation	Fill of a posthole/pit – appears to be the base of a feature. Although adjacent/similar in plan to [025], (028) varies from (026) and seems more sterile – therefore may be unrelated. Could also be topsoil trapped in a depression, although fill is more charcoal rich than (001) so this seems unlikely.
029	-	cut	circular in plan, 0.37x0.38x0.12m, gradual break of slope on north side, gradual sides, flat base, orientated NW-SE, fill (030)	Posthole, possibly part of a structure.
030	-	fill	Loose friable grey-brown silty sand, some charcoal and small stone inclusions, 0.30x0.33x0.12m	Fill of a posthole
031	-	cut	Sub-circular, 0.24x0.36x0.17m, fairly gradual sloping sides, steeper to E end, to a concave base	Cut of post hole, fairly circular in plan, U shaped section, may be one of a series. Appears to be cut into (089), however (089) may be supporting material from when the post was in situ. Post may have been driven in at an angle given the slope at the W side.
032	-	fill	compact, dark greyish brown silt, small pebble, charcoal inclusions, 0.24x0.36x0.17m, possibly affected by bioturbation	Fill of post hole (031). Appears to cut (090), but its possible that this is supporting material from when the post was in situ.
033	-	cut	sub oval, 2.10x1.90x0.08m, gradually sloping sides leading to a shallow undulating base in E of feature, sharp break of slope, orientated N-S, fills (034)/(141)	Cut of a large shallow scoop of unknown use
034	-	fill	Loose, mid grey brown silt, frequent stone and gravel inclusions, 1.93x1.30x0.07m	Upper fill of a shallow scoop [033]
035	-	cut	Linear, 0.5 width, 0.08 depth, gradual sides leading to flat base, roughly NW-SE, fill (036)	Linear feature running NW-SE over the enclosure [023] – most likely remains of a modern feature, very shallow, only visible in pockets, may be truncated.
036	-	fill	Loose, brown-grey silty gravel, stone inclusions, 0.47x0.08m	Fill of linear feature [035]
041	-	cut	Sub-circular, 0.12x0.20x0.05m, relatively steep sides leading, leading more gradually to a flat base, orientated N-S, axis almost vertical	Cut of possible post/stake hole, may relate to linear feature (023)
042	-	fill	loose grey brown silty sand, 0.12x0.20x0.05	Fill of (041)
043	-	cut	Circular, 0.40x0.31x0.07m, gently sloping sides leading gradually to slightly concave base	cut of possibly heavily truncated post hole, only base remaining – very shallow but circular in plan, in line with other circular features, forming an arc, making it most likely related.
044	-	fill	moderately compact light brown sandy silt, stone/pebbles inclusions, 0.40x0.31x0.07m, possibly heavily truncated, likely affected by bioturbation	Moderately compact brown sandy silt fill, possibly heavily truncated porthole – cut (043)
045	-	cut	Oval shaped, 0.7x0.50x0.30m, sides near vertical, rounded base, SSE-NWW orientation, within internal area of large enclosure	Cut of pit [045], fills (046)/(099)
046	-	fill	Light brown gravel silt. Loosely compacted, with sub rounded stone inclusions – pebbles, 1x cobble, 0.18m depth	Upper fill of pit [045]
047	-	cut	Roughly rectangular, rounded corners, to the E of [208], posthole present in the base of the SE corner, where this cut meets the slot for [208] the corner is angular, 1.10x0.67x0.33m, sides are very steep however where the posthole is located the side of the cut is much less steep – more gradual slope. Base slightly undulates but is approximately horizontal.	Cut of part of a posthole – only one side of the cut is curved and a further fill which overall is rectangular in shape, orientated NE-SW and part of the overall feature consisting of [208] and [079]. [079] is to the north and orientated N-S. [208] is to the west. See also [208].

Context No.	Area	Type	Description	Interpretation
048	-	fill	loose mid brown-grey silty gravel. Pebbles and couple of stones between 0.05-0.10m inclusions, 1.10x0.67x0.33m.	Fill of [047] – see also [208].
049	-	cut	circular/oval, 0.50x0.28x0.16m, sharp vertical sides leading more gradually to a rounded base	Possible post hole cut
050	-	fill	compact, dark grey-brown, sand and gravel, small to medium size stones and flakes of charcoal, 0.50x0.28x0.16	Fill for possible post hole (049)
051	-	cut	Rounded in plan, 0.40x0.36x0.11m, sharp almost vertical sides leading to a more gradual concave base, fill (052)	Possibly a posthole, there is a linear feature about 1m to the north which could be related.
052	-	fill	Hard dark greyish brown sand/silt/gravel, small to medium sized stones, very few flakes of charcoal, 0.40x0.36x0.11m	Fill of a possible posthole.
053	-	cut	Circular, 0.20mx0.06m depth, moderate break of slope and gradual at base, sides and base concave	remains of a post hole situated right up against large circular (023) – possible associated
054	-	fill	moderately compact mid to dark brown sand-silt, moderate inclusions of	fill of post hole (053)
055	-	cut	Sub-rounded/circular, 0.37x0.39x0.32m, sharp break of slope leading to steep sides, base is gently rounded, almost flat, axis inclination appears vertical/almost vertical, possible disturbance by animal burrowing.	Cut if likely post hole with silty fill, part of possible circle of post holes, situated close to the linear feature (023)/(024)
056	-	fill	moderately compact grey-brown sandy silt, frequent small stone/pebbles, occasional charcoal flecks inclusions, 0.37x0.39x0.32m, possibly affected by animal burrowing	Fill of likely post hole (055)
057	-	cut	Sub-circular 0.37x0.44x0.22m, sharp break at top, gradual slope at N side, to nearly flat base, orientated N-S	Large probably post hole, most likely associated with curvilinear (023)
058	-	fill	deposit Loose grey sandy silt, stones 0.02-0.08m and possible charcoal inclusions, 0.37x0.44x0.22m	Fill of post hole (057)
059	-	cut	sub-rounded, almost circular, 0.35x0.32x0.12m, quite sharp break of slope at top leading to quite steep sides, almost vertical to S, gently rounded base, almost flat, inclination looks almost vertical, possible slightly tilted towards the N, within very close proximity of curvilinear feature (023)	Cut of a likely post hole with a silty fill, situated to S of interior curvilinear feature, shallower cut to the N suggests its possible the axis was inclined this way.
060	-	fill	moderately compact grey-brown sandy silt, frequent small stones/pebbles, occasional charcoal flecks, 0.35x0.32x0.12m, affected by possible burrowing, small burrow visible in side of cut	Fill of post hole (059)
061	-	cut	Oval shaped cut of stakehole, 0.11x0.10x0.10m, east sloping axis angle, sides straight, base rounded, fill (062)	Stakehole associated with [065] and round house structure at NE of site.
062	-	fill	Loosely compacted dark grey-brown, silt with pebble inclusions, extends feature [061]	Fill of [061], stakehole
063	-	cut	Circular, 0.18x0.18x0.06m, vertical sides on one side, gradual on the other, gradually leading to concave base, fill (064)	Cut for post hole
064	-	fill	Hard, dark greyish brown sand-gravel, small to medium sized stones, 0.18x0.18x0.06m	Fill for a possible posthole
065	-	cut	Oval shaped, 0.15x0.10x0.13m, rounded, sides straight. No obvious angulation of axis, filled with (066)	Cut of stakehole, associated with [061] and roundhouse feature to NE of site
066	-	fill	Grey-brown silt with charcoal flecks and gravel inclusions, loose compaction	Fill of stakehole [065]
067	-	cut	Circular, 0.53x0.45x0.17m, relatively sharp break of slope with more gradual sides, base is flat, orientated N-S, fills (068)/(100)	Small pit with large amount of stone and gravel, also possible charcoal
068	-	fill	Loose mid grey-brown silty sand, small stone and possible charcoal inclusions, 0.53x0.45x0.15m	Upper fill of pit [067]

Context No.	Area	Type	Description	Interpretation
079	-	cut	L shape in plan, rounded and angular corners, 1.49x0.82x0.30m, majority of sides of this L-shaped cut are very steep (almost vertical), however at the SW side, which may have supported a possible panel, the cut is more gradual. This is also the case for the cut on the NE side of the 3 packing stone. The base is approximately horizontal. The deepest part of the cut is where the posthole is located – the possible panel slot has a depth of 0.21m. Orientated NW-SE, fill (080), axis inclination is unclear.	Possible slot for panelling, there are 5 stones present arranged in a linear fashion which may be packing for a panel – immediately south of this is a posthole and another packing stone – part of the overall structure consisting of [199], [201], [203], [047] and [208].
080	-	fill	Loose, mid brown-grey silty gravel, frequent pebbles and evidence of ^ packing stones (ranging from 0.12-0.26m), some charcoal flecks, 1.49x0.82x0.30m,	Fill of [079] – see [208]
081	-	cut	circular/oval dark greyish brown, 0.24x0.20x0.06m, gradually sloping sides leading to curved base. Orientated N-S	Cut for a possible post hole, features (013)/(011) make a round shape which might indicate that they are part of a bigger feature
082	-	fill	compact dark greyish-brown sand and gravel, small to medium stones and flakes of charcoal, 0.24x0.20x0.06m	Fill of (081) – possible post hole
083	-	cut	Circular, 0.47x0.40x0.27m, sharp break of slope with steep sides leading gradually to a flat-concave base, roughly NE-SW orientation, fill (084)	Posthole, possible part of a larger structure related to [007]
084	-	fill	Loose, grey-brown silty sand, small to large stones 0.10m max, 0.47x0.40x0.27m	Fill of a posthole
085	-	cut	Oval, 0.74x0.48x0.32m, sharp almost vertical sides leading to concave base, fill (086)	Possible cut for a posthole or a pit, feature (017) only 0.26m to the north
086	-	fill	Hard, dark greyish brown, sand-gravel, small to medium stones, flakes of charcoal, 0.74x0.48x0.32	Fill for a possible posthole or pit
089	-	cut	Sub-circular, 0.34x0.26x0.10cm, fairly gradual sloping sides leading to a concave base, orientated E-W, truncated by (031)	Cut of possible shallow pit, however appears to be cut by (031) its possible that this feature is a build up of supporting material/packing material from when post was in situ.
090	-	fill	Fairly loose light greyish brown silt with small amounts of sand, pebble inclusions, 0.34x0.26x0.10m, possible truncated by (032), likely affected by bioturbation	Fill of a possible shallow pit, very similar to (032) but slightly lighter in colour, as post hole (031) is immediately adjacent to the feature, its possible that (090) is packing material for a post. Cut (089)
091	-	cut	Rounded, 0.17x0.16x0.03m, shallow sided to gently curving base, no axis inclination apparent (very shallow), possible truncated by topsoil stripping, quite ephemeral but visible in plan	Cut of possible post hole base, may also just be a stone hole/other natural feature.
092	-	fill	moderately compact mid grey-brown sandy silt, frequent small stone/pebble inclusions, 0.17x0.16x0.03m, possible truncated by topsoil stripping, possible affected by burrowing	Fill of possible post hole/possible natural stone hole (091) – fill similar to nearby post hole (060) but no charcoal visible
093	-	fill	moderately compact dark brown-grey/black, sandy silt, frequent charcoal, small pebble/gravel, occasional larger stone inclusions (sub-angular, <0.10m), occasional small roots, 0.40x0.37x0.09m	Fill of a possible post hole, quite charcoal rich. The regularity of the cut suggests possible post hole function, however its possible that this is a pit containing e.g. waste material based on the concentration of charcoal/small pot frag. Its possible that some of the larger stones could represent post packing material. Cut (094)

Context No.	Area	Type	Description	Interpretation
094	-	cut	rounded, almost circular, 0.40x0.37x0.09m, quite sharply sloping at top, especially to NE side, shallower to the SW, base is gently rounded towards the NE, no obvious axis inclination, although if this represents a post hole base its possible that there's an inclination towards the SW as seen in the steeper side to the NE, quite regularly shaped cut	Cut of a possible post hole – see (093)
095	-	deposit	moderately compact black silty sand/charcoal, frequent small stones, gravel, 0.62x0.36x0.09m, no distinguishable cut, appears to be a deposit, no apparent contamination	Charcoal deposit concentration, charcoal visible in relatively large lumps with a matrix of silty sand similar to the surrounding natural. May be a deposit of hearth material or a larger piece of burnt wood which has subsequently fragmented – there is no distinguishable evidence of a pit cut.
096	-	fill	moderately compact mid brown grey sandy silt, frequent small pebble/gravel, charcoal flake inclusions, 0.29x0.28x0.07m, possibly affected by bioturbation	Fill of likely post hole (097)
097	-	cut	rounded, almost circular, 0.29x0.28x0.07m, shallower sloping towards SW, steeper to NE, to a gently rounded base, possible slight inclination of axis towards the S/SW – may be similar to nearby post hole (094)	Cut of a likely post hole, quite shallow, may just be the base, may be related to nearby possible post holes e.g. (094).
098	-	fill	Gravel silt, mid beige-brown, loosely compacted, extends feature, pebble sized stone inclusions	Fill of [101]
099	-	fill	Dark brown silt with gravel and pebble inclusions, also charcoal flecks, 0.13m depth, extends base of pit, loose compaction, contains 6 frags of prehistoric pot sherds above stone at base of pit and lithic blade x2 and flint flakes x2.	Lower fill of pit [045]
100	-	fill	Fairly loose brown gravel, small stone inclusions, 0.06m depth	Lower fill of pit [067]
101	-	cut	Oval shaped 0.46x0.44x0.13m, orientation N-S, sides straight on to flattish base, fill (098)	Cut of pit/ posthole
102	-	deposit	Loose black sand/gravel, small to medium stones, flakes of charcoal, 0.38x0.28x0.03m	Deposit of charcoal, very shallow, could be bottom of a charcoal pit which has been gradually truncated
111	-	fill	Hard dark greyish brown sand/gravel, small to medium stones, 0.11x0.28x0.24m	Fill for a possible posthole
113	-	fill	Loose mid brown grey sandy silt, very seldom pebbles – around 3% of fill, 0.21x0.21x0.13m	Small and shallow probable posthole with a homogeneous fill and no inclusions except for pebbles, cut [131]
117	-	deposit	Grey-light brown sand silt, loosely compacted, inclusions of manganese frags, gravel and sub-rounded pebbles	Intermediate deposit below topsoil and above subsoil at eastern side of site, completely seals the archaeological deposits below.
118	-	deposit	Mid orange-brown sand-clay, very compact, fairly frequent small stone/pebble inclusions, also manganese flecks/chunks, possible contamination from bioturbation, ploughing etc, extends across stone features 026, 186, depth varies across the area of the features.	Orange-brown layer below (117), fills into the cuts [185] and [189] for stone features, very similar to the lower fills of the stones 126 and 187.
119	-	cut	Oval in plan, 0.30x0.33x0.14m, gently sloping, meets the base which approximately horizontal, very gentle U-shape and very shallow, no obvious inclination of axis, possibly truncated as fill is so shallow, fill (120)	This cut is part of an overall linear feature which is defined on the topsoil by mid grey staining – this is possible charcoal or manganese, however the fill in the section is very limited. The dark staining on the topsoil is 1.40m in length – likely pit or truncated posthole, charcoal spread may be through machinery or water action.

Context No.	Area	Type	Description	Interpretation
120	-	fill	Loose, grey brown silty sand, possible charcoal staining taken from upper fill, 0.30x0.33x0.14m, possible truncation, feature is defined by dark staining, however the fill appears very limited, staining concentrated mainly in the upper fill	This is a linear feature defined on the topsoil by mid-grey staining, possible charcoal or manganese, however the fill in the E facing section is very limited. It is not clear what type of feature this is, but seems to be a likely pit or truncated posthole, caused by machinery.
121	-	cut	Circular, 0.16x0.16x0.14m, sharp almost vertical sides leading to a concave base, fill (122)	Cut of posthole
122	-	fill	Hard dark greyish brown slightly silty sand, small to medium sized stones, 0.16x0.16x0.14m	Fill of a posthole
123	-	cut	Roughly oval shaped, orientation SW-NE, 0.82x0.66x0.30m, sides near vertical except on SW side, which is slightly more sloping, break of slope to NE – 0.29m, to SW 0.40m, base rounded, fill (124)	Pit located within SSW area of large enclosure
124	-	fill	Mid brown gravel silt fill with inclusions of sub-rounded pebbles, loose compaction, extends feature	Fill of pit [123]
125	-	cut	Circular/oval, rounded, 0.28x0.24x0.11m, steep almost vertical sides leading to concave base. E-W orientation, fill (111)	Cut for a possible posthole
126	-	structure	Rectilinear stones, range from 0.30-0.40m, irregular, approximately 0.20m height, 2.8m length, 1.27m width, NW-SE orientation	Linear stone feature, running roughly NW-SE, containing 9 worked stones – the majority being rotary and possible saddle querns. Related to smaller group of stones 187 to NW. Most likely post-dates enclosure [023]/(024)
127	-	deposit	very compact, mixed but mostly grey with light pockets, clay – quite friable, greasier around stones, occasional dark mineral flecks, extends around stones 126, mostly concentrated to the W end	Mixed clay deposit, seems to postdate stones 126 as surrounds/ overlies various stones, rather than lying underneath. No distinguishable cut to this deposit – may be a natural deposit which has been redeposited into the fill of [185] around the stones, although also contains lithic find sf023 so could represent activity around the stones.
128	-	cut	Stone, roughly rectangular shaped in plan, drystone construction, 1.20x1.12x0.11m, components roughly rectangular shaped – 0.70x0.30x0.11m, orientated NW-SE, one course only	Drystone wall – possible associated with linear stones 186, has similar quern stones
129	-	cut	moderately compact mid grey-brown clay-silt, frequent small stones/pebbles, occasional dark mineral flecks, 0.42x0.39x0.14m, cut into [023]/(024) enclosure, possibly affected by bioturbation as lots of worms, but this is not apparent	Fill of a posthole which post dates the enclosure and may be related to other nearby postholes – fill is quite distinct from the more gravelly enclosure fill.
131	-	cut	Circular shape in plan, 0.21x0.21x0.13m, sides of the cut are steep and immediately break to form the V shaped base. Possible a slight northwards inclination since the north facing side is not as steep as the south facing side. Fill (113).	Cut of what appears to be a small and shallow posthole.
132	-	cut	Circular, 0.56x0.50x0.08m, gradually sloping sides leading to a flat base, fill (133)	Cut for posthole related to [134]
133	-	fill	Loose mid grey-brown silty clay, small stone and charcoal inclusions, 0.56x0.50x0.08m	Fill of posthole
134	-	cut	Sub-circular, rounded except for SW, 0.52x0.54x0.10m, gradually sloping sides leading to rounded base, fill (135), possibly related to [132]	Cut for posthole – most likely paired with [132]
135	-	fill	Loose brown-red silty clay, small stones, possible charcoal, 0.52x0.54x0.10m	Fill of posthole

Context No.	Area	Type	Description	Interpretation
136	-	cut	Oval shaped shallow scoop, 0.70x0.53x0.09m, orientated E-W, flat base, break of slope at N – 0.20m, at S – 1.10m	Shallow cut scoop within subsoil which contains organic/charcoal rich fill of possible hearth material (095)
137	-	fill	Loose mid grey brown silt, frequent pebbles and stones, 1.12x0.64x0.04m	Upper fill of what appears to be a shallow scoop, second fill (138), cut [140]
138	-	fill	Loose mid brown grey streaked with yellowish clay, frequent pebble and stone inclusions, 1.12x0.64x0.03m, boundaries are extremely indistinct and hard to determine exact extent	Second fill of what appears to be a shallow scoop, fill was streaked with a mid yellowish clay – upper fill (137) and cut [140]
140	-	cut	Sub-oval in plan, 1.30x1.16x0.12m, very gently sloping, immediately forming an approximately horizontal base, cut is very shallow U-shape with the base making up most of the cut, fills (137)/(138)	It appears to be a very shallow scoop with the function still unknown, it has 2 fills (137), the upper mid-grey brown fill and (138) the lower mid grey brown fill streaked with yellowish clay
141	-	fill	Loose mid yellow sandy silt, infrequent gravel and small stone inclusions, 0.4x0.3x0.01 in E of feature	Second fill of [033], underlying (034) in E of feature
142	-	cut	Circular, 0.41x0.40x0.18m, steep slightly convex sides leading to gradual flat base, fill (143)	Posthole within enclosure [023], related to [144]
143	-	fill	Loose grey-brown silty sand, stones 0.03-0.10m, possible charcoal inclusions, 0.41x0.40x0.18m	Fill of posthole
144	-	cut	Roughly round cut 0.40mx 0.20m depth, sides near vertical, break of slope 0.20m, filled with (145), rounded corners	Cut of a posthole, part of roundhouse within the enclosure [023], another 12 associated postholes make up the structure.
145	-	fill	Orange-brown sand silt, slight coarseness, fills posthole [1441], extends feature, occasional sub-rounded possible inclusions, loose compaction	Fill of posthole [144]
146	-	cut	Round shaped cut 0.40m, depth 0.22m, at west side small round shaped indentation 0.20x0.20x0.10m, base is rounded, sides vertical, break of slope 0.22m	Cut of posthole, part of structure A, located on the north side, indentation probably used during the post's construction, located next to postholes [144] and [148]
147	-	fill	Moderate compaction, mid-brown sand silt, extends feature, occasional sub-rounded pebble inclusions	Fill of posthole [146], part of structure A
148	-	cut	Oval shaped cut 0.60x0.36x0.21m, longest edge orientated E-W, sides near vertical – break of slope 0.21m, base rounded, fill (149)	Cut of posthole in structure A, south side, located next to postholes [150] and [146]
149	-	fill	Mid brown sand silt with very occasional charcoal flecks, loose compaction, extends feature	Fill of posthole [148] within structure A
150	-	cut	Circular 0.58x0.55x0.28m, steep almost vertical, slightly gradual leading to a flat-concave base, fill (151)	Cut of posthole in structure A related to [152], [148], [146]
151	-	fill	Loose grey-brown silty sand, small stone and charcoal inclusions, 0.58x0.55x0.28m	Fill of posthole [150]
152	-	cut	Circular, 0.41mx0.40x0.20m, vertical sides leading to a uniform base, no axis inclination apparent, fill (153)	Cut of a possible posthole, part of a possible post circle, adjacent to posthole [154] and [150]
153	-	fill	Loose mid grey brown silt, frequent small stone and gravel inclusions, 0.40x0.40x0.20m	Fill of possible posthole [152]
154	-	cut	Circular in plan, 0.38x0.39x0.10m, sides are steep, rapidly breaking to base which is approximately horizontal, cut is very shallow U-shape with the base forming the greater part of the cut, no obvious axis inclination, fill (155)	Cut of a small and shallow posthole. This is in association with [158], [160], [162] as they are arranged in a circular shape.
155	-	fill	Loose mid grey brown silt, frequent stone and pebble inclusions, on degraded stone in the half section, 0.38x0.39x0.10m	Fill of a small shallow posthole, cut [154], associated with [158], [160], [162], as they are arranged in a circular shape.

Context No.	Area	Type	Description	Interpretation
156	-	cut	Sub circular in plan, 0.40x0.42x0.20m, sides of the cut are very steep on the NE side, moderately steep on the SW side. The sides of the cut form an approximately horizontal base and is a U-shape, possibly a SW inclination as this side of the cut is more gentle than the NE which is almost vertical, fill (157)	Cut of a small quite shallow posthole with single fill – forms part of a ring of posts, made up of up to 13 postholes arranged in a circle with an additional central posthole – immediate posts to either side are [154] and [158]
157	-	fill	Loose mid grey-brown silty gravel, frequent stone and pebble inclusions, one discreet pocket of charcoal in NE corner of section around 0.10m from top, 0.40x0.42x0.20m	Fill of posthole [156] which is quite small and shallow – one of 13 postholes making up structure A.
158	-	cut	Sub-circular, 0.40x0.43x0.21m, sharp break of slope, vertical sides, gradually leading to rounded base, orientated W-E, appears vertical, fill (159)	Cut of a possible post hole, part of a possible post circle adjacent to [160]/ (161)
159	-	fill	Loose mid grey brown silt, frequent small stone and gravel inclusions, 0.40x0.43x0.21m	Fill of posthole [158]
160	-	cut	Circular, 0.41x0.12m – width unknown, steep sides leading almost vertically to a concave base, other half beneath baulk, fill (161)	Post hole of structure A within enclosure, related to [162], [158], [164]
161	-	fill	Loose brown-grey silty sand, small stones 0.01-0.03m, also 3x possible packing stones, 0.41x0.12m – width unknown, other half beneath the baulk	Fill of posthole[160]
162	-	cut	Round shaped cut 0.40x0.20 (of feature seen and excavated as S trench edge truncates it) Depth 0.20m, sides are near vertical, base is rounded, break of slope 0.20m, fill (163)	Cut of posthole, part of round house Structure A within the enclosure containing 13 postholes – this is on the southern side
163	-	fill	Mid orange-brown sand silt, slightly coarse, loose compaction, very occasional sub-rounded pebbles within the fill, extends feature	Fill of posthole [162], part of roundhouse structure within enclosure
164	-	cut	Round, 0.21x0.45x0.34m, vertical sides leading sharply at N and gradually at S to slightly concave base, longest N-S, vertical inclination, fill (165)	Cut of posthole
165	-	fill	Loose to medium, light brown sandy silt, lots of small stone inclusions up to 0.04m, 0.45x0.34x0.21m, possible contamination from few small roots and worms	Fill of posthole of [164]
166	-	cut	Round, 0.41x0.43x0.16m, sharp vertical sides breaking sharply to slightly concave base, axis inclination vertical, fill (167)	Cut of posthole, one of 13 in circular feature within wider enclosure
167	-	fill	Loose light brown, sandy silt, 0.43x0.41x0.16m, longest E-W	Fill of posthole, one of 13 in circular feature, within wider enclosure
168	-	cut	Oval shaped, 0.56x0.36x0.30m, longest edge orientated NW-SE, base slightly rounded, sides vertical, break of slope 0.30m, fill (169)	Cut of pit located in central area of Structure A, round house
169	-	fill	Mid orange-brown sand silt with occasional inclusions of sub-rounded pebbles and 3xcobbles – packing stones? Loosely compacted, fill extends feature, includes charcoal flecks <2%, in fill	Fill of posthole [168]
172	-	deposit	Quite friable, mixed red-yellow clay 0.40x0.30x0.06m, quite thick clay but feels quite gritty	This mixed clay deposit was in a small concentrated area towards the N end of the stones 126. The deposit lay directly under (127).
173	-	fill	Quite compact mid grey-brown gravelly silt, frequent small stones/pebbles, occasional dark mineral flecks, 1.15x0.64x0.27m, appears to lie adjacent/below possible occupation layer (174) at NW edge, likely bioturbation, lots of worms	Fill of pit [181], lies below occupation surface (174)/hearth (198) therefore pre-dating these – is adjacent to enclosure [023]/(024) – disturbance from later deposits makes it unclear if the pit truncates this – its possible that it could be related to the enclosure lying just inside it – lack of material culture etc makes it hard to date.

Context No.	Area	Type	Description	Interpretation
174	-	deposit	Very compact, mixed, mostly dark with orange/light concentrations, clay – moist, almost greasy to touch, frequent dark mineral (manganese), small stones and charcoal inclusions, 1.50x0.95x0.14m approx, possibly slightly truncated to N by stones [187] as they appear to overlie the deposit, bioturbation contamination is likely – lots of worms	Possible work/occupation deposit – very charcoal rich, also mottled with burnt clay concentrations – lies above the concentration of hearth material (198) – quite mixed with this material, suggesting a possible similar date – also appears to lie above pit [181]/(173)
177	-	cut	Irregular oval in plan, both W and E facing sides are more linear than rounded, W facing cut especially difficult to find, 0.75x0.60x0.34m, sides are very steep, almost vertical, and immediately break to form the base which is approximately horizontal (although dips in the NE corner) – quite a shallow feature, U shaped base, axis inclination unclear, possible truncated to the NE where fill was deeper in one corner and cut is more irregular and difficult to identify, fill (178)	This is the cut of quite a shallow posthole which along with [179]/(180) which is next to it appear to have been terminal postholes for the enclosure [023]/(024), it appears from the section that the posthole was inserted after the enclosure was dug.
178	-	fill	Loose mid grey brown silty gravel, frequent pebbles and very occasional charcoal flecks, 0.75x0.60x0.34m, possibly the NE corner since it goes much deeper	This is the only fill to [177] which is interpreted as a posthole, which along with [179]/(180) which is next to it are terminal postholes for the enclosure.
179	-	cut	irregular circular, 0.84mx0.24m depth, steep vertical sides breaking more gradually to a concave base, truncated by [023], fill (180)	Cut for terminal posthole of the enclosure [023], along with [177]/(178)
180	-	fill	Loose dark greyish brown sand-gravel, small to medium sized stones, 0.84m lengthx0.24mdepth	Fill for the terminal posthole of the enclosure
181	-	cut	Sub rounded, 1.15x0.64x0.27m, fairly steep sides, sharp top break, leading to more concave base, longest N-S, fill (173), cut appears slightly disturbed to the NW where occupation deposit is adjacent – likely a result of bioturbation, lots of worms here	Cut of pit feature, fill (173) – in section it looks almost as if the cut truncates deposits (174)/(198), but in excavating these layers it is clear that they overlie the pit – section is likely a result of heavy bioturbation, cut is quite clear below (198) – feature may be related to enclosure [023]/(024), see also (173)
182	-	deposit	Moderately compacted mid grey-brown sand silt with charcoal flecks and manganese, extends 1.2x2.0x0.20m below stone feature [128]	Deposit located below stone feature [128]
184	-	deposit	Very patchy light grey sand silt with charcoal flecks, depth 0.02x length 2.0mx width 1.2m	Possible old ground surface deposit located below deposit (182) which is below stone feature [128], deposit is located in natural depression, within the subsoil and probably accounts for its survival. Located within enclosure.
185	-	cut	Roughly rectangular, 2.9x1.5x0.2m, steeply sloping sides breaking sharply to a mostly concave base, NW-SE orientated, fills (118), (126), (127), (186)	Cut for the stone feature containing the large stones [126], (1180), (127), (186) – may be related to [189] – smaller linear stone feature
186	-	deposit	Quite compact grey-brown, quite mixed clay, some manganese and small stones, extends underneath stones 126, (185)	This mixed deposit which extended under stones 126 and also slightly NW is a similar deposit to (127)
187	-	structure	Mixed stones, roughly rectangular, largest 0.20-0.30m approx, round and irregular in shape, around 0.06 in height, 2.26m length, 0.55m width, roughly NW/SE orientated	Stone feature in shallow cut which may be related to {126} – to the NW of larger stones {126}, although stones are generally smaller. Contains a quern stone frag, several possible worked/hammer stones. Appears to sit on top of possible occupation deposit/work surface area (174), though deposits are mixed in this area – is possible they are of a similar date. Post-dates earlier stones 126 stratigraphically – also truncates enclosure [023].

Context No.	Area	Type	Description	Interpretation
189	-	cut	Rectilinear, rounded at NW end, gradually sloping sides leading to flat base, orientated roughly NW-SE, doesn't appear truncated, although more ephemeral around deposit (174), may have been disturbed here, fills are stones 187, (118), (186)	Cut for stone feature consisting of stones 187 – cut/stones appear to extend towards stones 128, although no cut is visible in between – may originally have been related?
190	-	deposit	Loose red-brown silty clay, stone and possible charcoal inclusions, 0.03-0.04m depth	Fill below stones 187 – seems to be similar to (118)
191	-	deposit	Loose mid grey blue silt, many charcoal flakes, 0.35x0.70m, irregular linear spread, 100% sampled	Appears to be a small roughly linear charcoal spread, with an unknown function. The spread is quite shallow, but had a significant number of charcoal flecks.
192	-	cut	Small oval shaped cut, 0.32x0.28x0.11m, longest edge orientated N-S, base rounded, break of slope 0.28m, sides steep, fill (193)	Cut of truncated posthole
193	-	fill	Mid grey-brown silt fill of posthole with 2x sub-rounded pebbles, moderate compaction, extends feature	Fill of posthole [192]
194	-	cut	Oval shaped, 0.52x0.44x0.21m, steep sided, almost vertical at the SW, leading to a U shaped cut, dipping towards the W, possible inclination to the west as seen in the dipping of the base to this side.	Cut of a posthole, located near to other postholes [193] and [197], which are just N of (external to) enclosure [023].
195	-	deposit	Loose mid brown grey silt, frequent pebble and small stone inclusions with some possible charcoal flecks, 0.52x0.44x0.21m	The single fill of posthole [194], posthole is located close to other two postholes [193] and [197] all of which are just externally north of the enclosure [023]
196	-	cut	Oval shaped cut, 0.80, 0.70x0.30m, longest edge orientated N-S, sides fairly steep onto rounded base, break of slope 0.30m, filled with (197)	Cut of pit [196], located to immediate east of enclosure [023] and positioned to east and west of postholes [025] and [194]
197	-	fill	Loose compaction, mid brown sand silt, occasional sub-rounded pebble sized stone inclusions, extends pit [196]	Fill of pit [196]
198	-	deposit	Very compact mixed black, pinkish brown, white-grey, mostly clay, concentrations of charcoal, ashy material, small stones and pebbles some of which look burnt, 0.84x0.65x0.12m, doesn't appear truncated although is disturbed by stones [187] to N, similar to (174) is concentrated below this, likely disturbance from bioturbation, lots of worms	Concentration of hearth like material below (174), seems likely to be of a similar date, perhaps in use not long before before this upper work/occupation layer formed as material is quite similar/mixed. Overlies pit (173)/[181] at S end, also possibly related to stones [187]
199	-	cut	Sub-oval/ C shaped in plan due to truncation at E side by linear feature [201], southern and western sides are very steep, shallower to the north, leading to a roughly flat base, depth varies across the base – U shaped, base forms largest area of feature, 0.83x0.43x0.15-0.10m, truncated by [201] may have been a slot to insert the post, fill (200)	Pre dates [201] as truncated by it on the N side, cut hard to establish because of this. Seems that [201] may have been some kind of slot for the posthole, However [199] is also closely connected to another posthole [203] – all three features may represent some form of structure adjacent to the ring of postholes interpreted as a roundhouse just to the NE of [199, [201] and [203], therefore these features may have been associated with the roundhouse.
200	-	fill	Loose mid grey brown silty gravel, frequent pebbles, 0.83x0.43x0.15m, this fill is cut by linear feature [199]	This is the fill of posthole [199] which is associated with [201] and [203], all three features may have formed a function associated with the roundhouse.

Context No.	Area	Type	Description	Interpretation
201	-	cut	Linear/rectangular in plan, on the western side where {201} cuts posthole [199], the corners are angular, the corners are also angular on the eastern side where posthole [203] meets this linear feature – its possible that [203] may cut [201] but this is unclear. 0.48x1.26x0.15m, sides are very steep meeting to form a flat base, orientated E-W. Cut is at its widest where it cuts into posthole [199], at its narrowest it is 0.40m, fill (202)	This linear feature cuts into posthole [199] and may be cut by the other posthole [203] on its western side. It may have been a slot to insert a post or may have another function.
202	-	fill	Loose mid grey-brown silty gravel with a mix of gravelly sand where its cuts into posthole [199], frequent pebbles and one large stone 0.33m, set into N section, 0.48x1.26x0.15m	Only fill of linear feature [201]
203	-	cut	Linear/sub rectangular, 0.31x1.0x0.16m, sides are almost vertical and form a roughly flat base, there appears to be a continuous slot for inserting the post and here the base is much shallower at 0.06-0.11m, at the NW corner where [203] and [201] meet the corner is angular, NW inclination of axis	This is a posthole associated with linear feature [201] and posthole [199], the overall function of these features is unclear but they were probably associated with the roundhouse to the NE.
204	-	fill	Loose mid grey brown silty gravel, frequent pebble inclusions, 0.31x1.0x0.16m	Fill of posthole [203]
205	-	cut	Rounded almost circular, 0.42x0.39x0.14m, quite sharp top break leading to more gradually gently rounded base, no axis inclination apparent, fill (129), cut into exterior of enclosure [023]	Post hole, possibly related to other nearby postholes eg [192], [194], forming a roughly circular shape and possible structure. Cut partially into the enclosure [023] meaning a post-date.
206	-	cut	Oval 0.7x0.4x0.12m, steep sided apart from W where side is gradual, leading gradually to a flat base, fill (207)	Fairly shallow depression, most likely a small posthole
207	-	fill	Loose dark grey with some yellow silty sand, some charcoal and pebble inclusions, 0.7x0.4x0.12m	Fill of shallow posthole
208	-	cut	Circular rounded and angular – as slot for sliding in a post extends out on the SE side, 0.38x0.36x0.12m, sides of the cut are very steep (almost vertical) and lead down to form a base which is horizontal, cut is a shallow U shape, with the base making up most of the feature, orientation appears to be SE with the slot leading out at this side, fill (209)	Small and shallow posthole which is part of an overall feature consisting of 2 other postholes – [047] to the east and [079] to the north. These overall features appear to have been associated with [199], [201] and [203], all of these may have formed some sort of ancillary structure associated with the roundhouse. This structure was positioned opposite the entrance way of the enclosure which lies to the SW.
209	fill		Loose mid brown grey silty gravel, frequent pebble inclusions, 0.38x0.36x0.12m	Fill of [208]

Appendix B: List of Drawings

Drawing No.	Feature	Sheet No.	Subject	Scale
1	many	1	Pre-ex plan of NE area	1:50
2	023	2	E facing section of gully (slot B)	1:10
3	023	2	W facing section of gully (slot B)	1:10
4	023	2	W facing section of gully (slot A)	1:10
5	023	2	E facing section of gully (slot A)	1:10
6	019/020	2	section (SE) of post hole	1:10
7	015/016	2	SE facing section of poss pit	1:10
8	019/020	2	Post-ex plan of post hole	1:20
9	015/016	2	post ex plan	1:20
10	013/014	2	N facing section	1:10
11	013/014	2	Post-ex plan	1:20
12	031, 032, 089, 090	2	N facing section of post hole and poss pit	1:10
13	024	3	Post ex plan of slot B	1:20

Drawing No.	Feature	Sheet No.	Subject	Scale
14	024	3	Post ex plan of slot A	1:20
15	032, 090	3	Post ex plan	1:20
16	005	3	E facing section of spread 005	1:10
17	006	3	Post ex plan	1:20
18	044/043	4	E facing section	1:10
19	044/043	4	Post ex plan	1:20
20	055/056	5	SE facing section	1:10
21	057/058	5	NE facing section	1:10
22	055/056	5	Post ex plan of feature	1:20
23	037/038	5	Post ex plan of feature	1:20
24	011/012	6	N facing section	1:10
25	011/012	6	Post ex plan	1:20
26	081/082	6	North facing section	1:10
27	081/082	6	Post ex plan	1:20
28	many	7	pre ex plan of site cont	1:50
29	many	8	pre ex plan of site cont	1:50
30	many	9	pre ex plan of site cont	1:50
31	021/022	5	SW facing section	1:10
32	021/022	5	Post ex plan	1:20
33	059/060	5	E facing section	1:10
34	059/060, 091,092	5	Post ex plan	1:20
35	091/092	5	E facing section	1:10
36	041/042	6	S facing section	1:10
37	041/042	6	Post ex plan	1:20
38	090	-	N facing section	1:10
39	049/050	-	Post ex plan	1:20
40	093/094	-	SE facing section of post hole	1:10
41	095	5	N facing section of deposit	1:10
42	many	-	pre ex plan of features	1:50
43	096/097	-	SW facing section of post hole	1:10
44	004	5	East facing section	1:10
45	004	5	Post ex plan	1:20
46	029	5	Half section of pit	1:10
47	067	5	Half section of pit	1:10
48	017/018	5	N facing section	1:10
49	085/086	5	W facing section	1:10
50	028/027	5	W facing section	1:10
51	061/062	5	E facing section of stakehole	1:10
52	065/066	5	E facing section of stakehole	1:10
53	098/101	10	W facing section	1:10
54	045/046/099	10	SW facing section of pit	1:10
55	083/084	5	Half section – W facing	1:10
56	007/008	5	SW facing section of possible posthole base	1:10
57	009/010	5	NW facing section of possible posthole	1:10
58	051/052	10	W facing section	1:10
59	102	10	N facing section	1:10
60	many	11	Pre-ex plan of west area	1:50
61	045/046	-	Pottery in situ	1:10
62	123/124	6	SW facing section of pit	1:10
63	119/120	10	E facing section of posthole/linear feature	1:10
64	063/064	10	N facing section	1:10
65	121/122	10	N facing section	1:10
66	111	10	S facing section	1:10
67	126/127/118	11	Mid ex of stones 126 after slots A-C	1:20
68	128, 118	12	Mid ex of stones 128 after slot	1:20

Drawing No.	Feature	Sheet No.	Subject	Scale
69	132/133	10	Half section of posthole	1:10
70	134/135	11	Half section of posthole	1:10
71	131/113	10	Half section of posthole	1:10
72	033/034	10	SE facing section – half section of 033	1:10
73	137/138/140	10	N facing section – half section of 140	1:10
74	142/143	10	NE facing half section	1:10
75	166/167	10	SW facing section of posthole	1:10
76	144/145	10	W facing section of posthole	1:10
77	158/159	-	SW facing section of posthole 158	1:10
78	162/163	13	W facing section of posthole 162	1:10
79	154/155	10	SW facing section of posthole 154	1:10
80	160/161	13	NW facing section - posthole 160	1:10
81	164/165	10	W facing section of posthole	1:10
82	152/153	10	W facing section of posthole 152	1:10
83	168/169	13	NW facing section of posthole 168	1:10
84	156/157	13	NW facing section of posthole 156	1:10
85	150/151	13	NW facing section of 150	1:10
86	146/147	13	NW facing section of posthole	1:10
87	126/127	14	Overlay of mid-ex plan of stone feature	1:20
88	126/127/172	15	Overlay of mid-ex plan of stone feature	1:20
89	023/024	13	S facing section of Slot G – enclosure	1:10
90	023/024	13	NW facing section of Slot D – enclosure	1:10
91	023/024	13	W facing section of Slot H – enclosure	1:10
92	023/024	13	E facing section of Slot I – enclosure	1:10
93	023/024	16	NW facing section of Slot C against trench edge in N extent	1:10
94	126/127	16	Half section showing 126/127 – SW facing	1:10
95	126/127	16	Half section showing 126/127 – N facing	1:10
96	-	13	S facing section	1:10
97	177/178	16	NW facing section 177/178	1:10
98	174/118	16	S facing section of slot through 174/118 (after removal of 118)	1:10
99	173/181	16	E facing section of slot through pit 173/181 and deposit 174 (after removal of 118)	1:10
100	177/178/023/024	17	W facing section 177/178/023/024	1:10
101	023	-	Post ex plan of enclosure – sheet A	1:50
102	023	19	Post ex plan of enclosure – sheet B	1:50
103	023/179	17	W facing section	1:10
104	023	20	Post ex plan of enclosure – sheet C	1:50
105	174/181/173	17	E facing section through 174	1:10
106	192/193	17	W facing section of posthole	1:10
107	196/197	18	NE facing section of pit/posthole	1:10
108	194/195	17	NW facing section of posthole	1:10
109	142-162	20	Plan of structure A	1:20
110	-	-	No assigned twice – now DR118	-
111	-	23	Post ex plan of features	1:20
112	-	24	Post ex plan of features	1:20
113	-	25	Post ex plan of features	1:20
114	199-202	26	SW facing section 199/200/201/202	1:10
115	-	26	NE facing section 203/204	1:10
116	-	27	Post ex plan linear stone feature cut	1:20
117	-	28	Post ex plan stone linear cut and features 067/157/123/101	1:20
118	205/129/023/024	26	W facing section of slot through posthole 205/129 and 023/024	1:10
119	206/207	26	Half section of 206/207	1:10
120	179/180	26	Profile of 179/180	1:10
121	079/080	26	Profile 179/180	1:10

Drawing No.	Feature	Sheet No.	Subject	Scale
122	047/048	26	SW facing section of 047/048	1:10
123	208/209	26	SW facing section 208/209	1:10
124	206/207	26	Post ex plan of 206/207	1:10
125	-	29	Post ex plan of linear feature and 140	1:20
126	-	30	Post ex plan of 'porch'	1:20

Appendix C: List of Samples

Sample No.	Context No.	Area	Size (litres)	%	Reason for Sampling				Application/Comments
					Pot	Bone	Lithic	Botanics	
1	024	-	5	<5					Slot A
2	024	-	5	<5					Slot B
3	054	-	2	50					Slot B – posthole
4	020	-	2	50					Fill of posthole (019)
5	016	-	5	35					Fill of (015)
6	014	-	5	50					Fill of (013)
7	032	-	2	50					Fill of (031) – posthole
8	090	-	2	50					Fill of (089) – possible pit
9	006	-	5	50					charcoal spread
10	044	-	1	50					Fill of (043)
11	012	-	2	<10					fill of (011)
12	056	-	2	<10					fill of (055) – posthole
13	058	-	2	50					fill of (057) posthole
14	081	-	1	100					fill of posthole (082)
15	060	-	3	5					fill of (059) posthole
16	022	-	1	50					fill of posthole (021)
17	049	-	1	20					fill of (050)
18	092	-	0.5	50					fill of possible posthole (091)
19	042	-	0.5	50					fill of posthole
20	093	-	3	35					fill of (094) possible posthole/pit
21	095	-	3	50					charcoal deposit
22	096	-	2	50					Fill of posthole (097)
23	030	-	1	50					fill of posthole (024)
24	004	-	3	100					Deposit 004
25	068	-	3	50					Fill of posthole/pit
26	100	-	2	50					Lower fill of posthole/pit
27	026	-	4	20					Fill of post/stake hole 025
28	028	-	4	40					Fill of possible posthole 027
29	066	-	0.2	50					Fill of 059
30	062	-	0.2	50					Fill of 061
31	018	-	3	50					Fill of 017
32	086	-	3	20					Fill of 085
33	010	-	3	50					Fill of 009
34	046	-	5	50					Upper fill of 045
35	099	-	3	50					Lower fill of 045
36	098	-	3	50					Fill of 101
37	008	-	1	75					Fill of possible circular feature 007
38	084	-	3	50					Fill of posthole
39	074	-	3	50					Fill of pit
40	102	-	2	100					Deposit containing charcoal
41	119/120	-	2	50					Fill of linear feature
42	124	-	3	50					Fill of pit 123
43	064	-	2	100					Fill of posthole 063
44	122	-	2	50					Fill of posthole 121
45	111	-	2	50					-

Sample No.	Context No.	Area	Size (litres)	%	Reason for Sampling				Application/Comments
					Pot	Bone	Lithic	Botanics	
46	113	-	2	50					Fill of posthole 131
47	133	-	2	50					Fill of posthole 132
48	135	-	2	50					Fill of posthole
49	034	-	5	50					Fill of pit 033
50	137	-	5	25					First fill of pit 140
51	138	-	2	50					Second fill of pit 140
52	141	-	5	50					Second fill of pit 033
53	143	-	10	50					Fill of posthole 142
54	159	-	5	50					Fill of posthole 158
55	145	-	6	50					Fill of posthole 144
56	155	-	3	50					Fill of posthole 154
57	167	-	5	25					Fill of posthole 166
58	163	-	5	50					Fill of posthole 162
59	161	-	5	50					Fill of posthole 160
60	165	-	5	50					Fill of posthole 164
61	157	-	5	50					Fill of posthole 156
62	169	-	6	40					Fill of posthole 168
63	151	-	10	50					Fill of posthole 150
64	147	-	5	50					Fill of posthole 146
65	127	-	10	-					Clay layer around stones 126
66	172	-	-	-					-
67	127	-	5	-					Mixed clay deposit around stones 126
68	024	Slot I	3	<1					Fill of enclosure 023
69	024	Slot G	3	<1					Fill of enclosure 023
70	024	Slot A	6	<1					Fill of enclosure 023
71	024	Slot D	6	<1					Fill of enclosure 023
72	024	Slot F	6	<1					Fill of enclosure 023
73	024	Slot H	5	<1					Fill of enclosure 023
74	024	Slot E	5	<1					Fill of enclosure 023
75	024	Slot B	4	<1					Fill of enclosure 023
76	149	-	5	20					Fill of posthole
77	180	-	3	5					Fill of posthole
78	178	-	5	50					Fill of posthole 177
79	173	-	5	<20					Fill of pit 181
80	127	-	5	<5					Deposit within cut of stones 126 (N extent)
81	182	-	5	<5					Deposit below stone structure 128
82	084	-	4	<5					Old ground surface deposit below stones 128
83	186	-	10	-					Deposit below stones 126
84	191	-	2	-					Charcoal spread
85	198	-	10	30					Hearth deposit below 174
86	193	-	2	50					Fill of posthole 192
87	197	-	5	30					Fill of pit 196
88	174	-	9	10					Possible work surface/occupation deposit
89	190	-	4	<5					Fill below stones 187
90	195	-	5	50					Fill of posthole 194
91	024	-	5	<1					Fill of enclosure 023 – southern end
92	024	-	5	<1					Fill of enclosure 023 – just W of Slot C
93	129	-	5	50					Fill of posthole which truncates enclosure
94	200	-	5	50					Fill of posthole 199
95	202	-	5	50					Fill of linear feature 201
96	204	-	3	50					Fill of posthole 203
97	207	-	3	50					Fill of posthole 206

Sample No.	Context No.	Area	Size (litres)	%	Reason for Sampling				Application/Comments
					Pot	Bone	Lithic	Botanics	
98	080	-	5	50					Fill of 079
99	209	-	4	50					Fill of posthole 208

Appendix D: List of Finds

Find No.	Area	Context No.	No. of Pieces	Material	Type	Description
1	-	001	1	Metal	Fe	Modern chisel/peg?
2	-	024	1	Pottery	Pottery	Body sherd with possible decoration – prehistoric?
3	-	unstrat	1	Lithic	Flint	Flake – debitage?
4	-	unstrat	1	Lithic	Flint	Flake
5	-	unstrat	2	Lithic	Flint	2x flakes
6	-	093	1	Pottery	Pottery	small degraded sherd, possibly prehistoric
7	-	099	6	pottery	pottery	small sherds, possibly neolithic
8	-	099	1	lithic	flint	blade
9	-	unstrat	1	lithic	flint	flake
10	-	118	1	metal	Fe	nail/rivet
11	-	099	5	pottery	pottery	remains of vessel
12	-	099	1	lithic	flint	blade
13	-	099	1	lithic	flint	flake
14	-	099	1	lithic	flint	-
15	-	099	1	stone	-	found above pot sf 11
16	-	126	1	stone	quern stone	lower rotary quern stone
17	-	126	1	stone	quern stone	partial lower quern stone?
18	-	unstrat	1	lithic	flint	flake
19	-	117	1	lithic	flint	fire glazed?
20	-	117	1	ceramic	pottery	body sherd – medieval
21	-	118	1	ceramic	pottery	body sherd – modern
22	-	117	1	stone	stone	ovoid mace head
23	-	127	1	lithic	flint	scraper?
24	-	172	1	metal	Fe	nail/rivet?
25	-	118	1	metal	Fe	nail/rivet?
26	-	024	1	stone	stone	worked?
27	-	126	8	stone	stone	worked
28	-	126	1	stone	stone	worked
29	-	126	1	stone	stone	quern stone
30	-	126	1	stone	stone	saddle quern
31	-	126	1	stone	stone	quern?
32	-	126	1	stone	stone	quern?
33	-	126	1	stone	stone	hammerstone
34	-	126	1	stone	stone	worked
35	-	128	1	stone	stone	quern
36	-	126	1	stone	stone	decorated
37	-	183	1	bone	-	human/animal?
38	-	186	1	bone	-	cremated
39	-	-	-	-	-	disregarded
40	-	187	1	stone	stone	possible hammer stone?
41	-	126	1	stone	stone	possible hammer stone?
42	-	126	1	stone	stone	Worked – shaped with possible central hole

Appendix E: List of Photographs

File 001: 3608 Watching Brief

Frame	Area	Context No.	Subject	Taken from
1	-	-	ID shot	-
2	-	-	NW site – general view	SE
3	-	-	SW site – general view	N
4	-	-	S site	N
5	-	-	W site – view from road	NW
6	-	-	Burn to site W	NE
7	-	-	View towards site E	W
8	-	-	Burn to site W	SE
9	TP6	-	TP7 area pre-ex	SWW
10	TP6	-	Showing ceramic drain	N
11	TP6	-	Ceramic drain in W facing section	W
12	TP6	-	Ceramic drain in W facing section	W
13	TP6	-	E facing section at 1m approx	E
14	TP6	-	General view to site W	E
15	TP6	-	Post ex of pit	N
16	TP6	-	Post ex of pit	N
17	TP7	-	TP7 ID shot	-
18	TP7	-	Showing ceramic drain	E
19	TP7	-	E facing section at 1m approx	E
20	TP7	-	E facing section at 1m approx	E
21	TP7	-	E facing section – post ex	E
22	TP7	-	Post ex of pit	N
23	TP7	-	Post ex of pit	N
24	TP7	-	General view to site NE	SW
25	TP5	-	W facing section	NW
26	TP5	-	E facing section	E
27	TP5	-	W facing section (with flash)	NW
28	TP5	-	Post ex of pit	N
29	TP5	-	Post ex of pit (with flash)	N
30	TP5	-	Post ex of pit	N
31	-	-	General view across W site to Arran	SE
32	-	-	General view across site	SE
33	-	-	General view across site	SSW
34	-	-	General across W site to coast	SE
35	-	-	Ailsa Craig to SWW of site	W
36	-	-	General view of W site and coast	SSE
37	-	-	View of Arran	SE
38	-	-	View of Arran	SE
39	-	-	E of site and landscape	SSW
40	-	-	View over site to Ailsa Craig	NE
41	TP1	-	TP1 ID shot	-
42	TP1	-	Detail of N facing section showing dark deposit	N
43	TP1	-	Detail of N facing section showing dark deposit	N
44	TP1	-	Post ex of pit	W
45	TP1	-	Post ex of pit	W
46	TP1	-	Post ex of pit	E
47	TP1	-	W facing section of pit	W
48	TP2	-	TP2 ID shot	-
49	TP2	-	Working shot	NE
50	TP2	-	Working shot	NE
51	TP2	-	Post ex of pit	N
52	TP2	-	Post ex of pit	N

Frame	Area	Context No.	Subject	Taken from
53	TP2	-	W facing section of pit	NW
54	TP2	-	W facing section of pit	NW
55	TP4	-	TP4 ID shot	-
56	TP4	-	Post ex of pit	N
57	TP4	-	W facing section	NW
58	TP4	-	W facing section	NW
59	TP3	-	TP 3 ID shot	-
60	TP3	-	Post ex of pit	W
61	TP3	-	Post ex of pit	E
62	TP3	-	S facing section	SW
63	TP3	-	N facing section	NE
64	TP3	-	General of backfilled pit showing waterlogging	SE
65	TPA	-	Post ex of pit	N
66	TPA	-	Post ex of pit	N
67	TPA	-	W facing section	NW
68	TPA	-	W facing section	NW
69	TPA	-	location shot	NW
70	TPB	-	Post ex of pit	SE
71	TPB	-	NE facing section	SEE

File 002: 3608 Strip, map and sample excavation

Frame	Area	Context No.	Subject	Taken from
1	-	-	Broken gate into field	-
2	-	-	ID shot	-
3	-	-	Working shot – S end	SW
4	-	-	Working shot – S end	SSW
5	-	-	Working shot – S end	NWW
6	-	-	Stripped S end – working shot	SEE
7	-	-	Stripped S end – working shot	SW
8	-	-	Starting to strip N end – working shot	SSE
9	-	-	Working shot	-
10	-	-	Stripped N end	SW
11	-	-	Stripped N end	SW
12	-	-	Stripping at S end	NWW
13	-	-	Stripping – features at N end	NE
14	-	-	Stripped N end	NNE
15	-	-	Working shot – with N end features	NW
16	-	-	Working shot – whole area	NW
17	-	-	Working shot – whole area	NW
18	-	-	Stripping – S end	W
19	-	-	Stripped W of site	N
20	-	-	Stripped N end showing features	E
21	-	-	N end after cleaning	W
22	-	-	N end after cleaning	NW
23	-	-	NE corner after cleaning – showing features	N
24	-	-	NE corner/cleaning working shot	E
25	-	-	View over N end/cleaning working shot	E
26	-	023/024, various	curvilinear feature – cleaned	SW
27	-	023/024, various	curvilinear feature – cleaned with other features	SW
28	-	023/024, various	curvilinear feature and possible post holes	NE
29	-	023/024, various	curvilinear feature	NE
30	-	-	Curvilinear feature and other features	NE
31	-	-	Possible postholes – cleaned	SE
32	-	-	Possible postholes – cleaned	SE

Frame	Area	Context No.	Subject	Taken from
33	-	-	Possible postholes – cleaned	N
34	-	-	Possible postholes – cleaned	N
35	-	-	Possible pits/postholes	SSE
36	-	-	General of possible pits/postholes – cleaned	SW
37	-	-	General of possible pits/postholes – cleaned	SW
38	-	-	General of possible pits/postholes – cleaned	SW
39	-	-	General of possible pits/postholes – cleaned	N
40	-	035/036	General of linear feature – cleaned	E
41	-	035/036	General of linear feature – cleaned	E
42	-	023/024	Pre ex of curvilinear feature – slot B	N
43	-	023/024	Pre ex of curvilinear feature – slot A	N
44	-	023/053	Post ex of slot B- shows post hole and curvilinear feature	E
45	-	023/053	Post ex of slot B- shows post hole and curvilinear feature	W
46	-	023/024	W facing section, slot A	W
47	-	023/024	E facing section – slot A	E
48	-	015/016	W facing pre ex	W
49	-	019/020	Pre ex of post hole	N
50	-	019/020	Section (E facing) post hole	E
51	-	015/016	Section (SE facing)	SE
52	-	032	Pre-ex of irregular feature	E
53	-	013/014	Pre-ex – north facing	N
54	-	013/014	Pre-ex – north facing	N
55	-	013/014	Post ex – north facing	N
56	-	032/031	Section – N facing	N
57	-	006	Pre ex of spread	E
58	-	006	Post ex of spread	E
59	-	023/024	Working shot – after stripping	SE
60	-	-	West area showing feature	SW
61	-	-	West area showing feature	S
62	-	-	Possible pits in S area	W
63	-	044	Pre ex of possible posthole	W
64	-	044	Section (E facing)	E

File 003: Strip, map and sample excavation

Frame	Area	Context No.	Subject	Taken from
1	-	012	Pre ex of feature	NE
2	-	056	Pre ex of feature	SSE
3	-	057	Pre ex of features x 3	SSW
4	-	012	North facing section	N
5	-	055/056	SE facing section	SE
6	-	057/058	NE facing section	SW
7	-	081/082	Pre ex of feature	N
8	-	081/082	Post ex of pit	N
9	-	060	Pre ex of feature	S
10	-	049/050	Pre ex of feature	SW
11	-	021/022	Pre ex	SE
12	-	021/022	SE facing section	SE
13	-	059/060	E facing section	E
14	-	041/042	Pre ex	-
15	-	041/042	S facing section	S
16	-	091/092	Pre ex of feature	NEE
17	-	049/050	N facing section	N
18	-	093	Pre ex of feature	W
19	-	093/094	SE facing section	SE

Frame	Area	Context No.	Subject	Taken from
20	-	093/094	SE facing section	SE
21	-	095	N facing section of deposit	N
22	-	096	Pre ex of feature	S
23	-	023/024	Pre ex E side of enclosure	S
24	-	023/024	Pre ex E side of enclosure	S
25	-	023/024	Pre ex E side of enclosure	E
26	-	023/024	Pre ex W side of enclosure	W
27	-	023/024	Pre ex E side of enclosure	E
28	-	023/024	Pre ex E side of enclosure	E
29	-	-	Possible linear to immediate N of enclosure	E
30	-	-	Circular structure that enclosure truncates	E
31	-	-	Circular structure that enclosure truncates	E
32	-	098	Pre ex of post hole	-
33	-	029/030	post hole - pre ex	SE
34	-	-	Pre ex of pit in enclosure	W
35	-	029/030	section of pit	SE
36	-	067/068	Pre ex of feature	NW
37	-	-	Maureen in burn	-
38	-	-	NW area with features	S
39	-	-	NW area with features	E
40	-	-	NW area with features	E
41	-	-	NW area with features	E
42	-	-	NW area with features	S
43	-	026/028	Pre ex of pits and postholes	W
44	-	059/091/052	Post ex of postholes	SE
45	-	059/091/052	Post ex of posthole	E
46	-	029	Post ex of posthole	W
47	-	017/018	Pre ex of features	NE
48	-	085/086	Pre ex of features	NE
49	-	017/018	N facing section	N
50	-	085/086	N facing section	N
51	-	025/026/027/028	W facing section of postholes	W
52	-	056/055	Post ex of posthole	S
53	-	056/055	Post ex of posthole	S
54	-	089/090/031/032	Post ex of posthole	W
55	-	067/066	Half section of posthole/pit	SW
56	-	037/038	Post ex of posthole	NW
57	-	037/038	Post ex of posthole	NW
58	-	067/068	Post ex of pit	SW
59	-	013/014	Post ex of posthole	W
60	-	039/040	Post ex of posthole	W
61	-	013/014	Post ex of posthole	N
62	-	039/040	Post ex of posthole	W
63	-	013/014	Post ex of posthole	N
64	-	049/050	Post ex of posthole	E
65	-	041/019/021	Post ex of postholes	E
66	-	061/059/160	Post ex of postholes and stakeholes	NE
67	-	089/031/065	Post ex of postholes and stakeholes	W
68	-	011/012	Post ex of posthole	NW
69	-	009/010	Pre ex of feature 010	W
70	-	083/084	Pre ex of feature 083	W
71	-	017	Post ex plan	N
72	-	085	Post ex plan	N
73	-	009/010	Pre ex of feature 009/010	NW
74	-	025/026/027/028	Post ex of posthole/ poss posthole	W

Frame	Area	Context No.	Subject	Taken from
75	-	083/084	Half section	W
76	-	007/008	Pre ex of possible pit/posthole	S
77	-	006	Post ex of feature	N
78	-	045	Half section SW facing	SW
79	-	101/098	Half section W facing	W
80	-	051/052	Pre ex photo	N
81	-	007/008	SW section of possible posthole	NW
82	-	009/010	NW section of possible posthole	NW
83	-	083/084	Post ex of posthole	W
84	-	051/052	W facing section	W
85	-	069/070	Possible feature	E
86	-	069/070	Possible feature	S
87	-	009/010	Post ex of posthole	NW
88	-	051/052	Post ex of feature	N
89	-	035/036	Pre ex of possible feature	SE
90	-	035/036	Pre ex of possible feature	W
91	-	007/008	Post ex of feature	SW
92	-	073/074	Pre ex of feature	S
93	-	035/036	Slot through feature	SW
94	-	035/036	Slot through feature	SW
95	-	102	Pre ex of features	S
96	-	102	N facing section	N
97	-	-	Pre ex shot of linear feature	SW
98	-	-	Pre ex shot of linear feature	SW
99	-	-	Pre ex shot of linear feature	S
100	-	-	Pre ex shot of linear feature	S
101	-	102	Post ex of feature	W
102	G	-	S facing section Tr 2	S
103	G	-	Burnt/hearth material Tr3	S
104	G	-	Burnt/hearth material Tr3	E
105	G	-	Burnt/hearth material Tr 3 (close-up)	S
106	G	-	Burnt/hearth material Tr3	S
107	G	-	Tr 3 S-facing section	S
108	G	-	Tr 3 S-facing section	S
109	G	-	Tr 4 post ex shot	W
110	G	-	Tr 4 S facing section	S
111	G	-	Tr 5 post ex shot	W
112	G	-	Tr 5 post ex shot	S
113	G	-	T238 re-excavation – west side	W
114	G	-	T238 re-excavation – S facing section	S
115	G	-	T238 re-excavation – east side	E
116	G	-	T238 re-excavation – S facing section	S
117	G	-	Perpendicular trench between T238 and 239	W
118	-	126	Linear stone feature	S
119	-	126	Close up of possible cist?	E
120	-	126	Possible cist and quern stone frag	E
121	-	126	Quernstone frag	E
122	-	-	Stone feature	E
123	-	-	Stone feature	S
124	-	-	Stone feature to immediate west of main feature	N
125	-	-	Pre ex of stones against E side	W
126	-	-	Pre ex of stones against E side	S
127	-	-	Quern in situ	N
128	-	-	Detail of quern stone	N
129	-	126	Stones after cleaning	E

Frame	Area	Context No.	Subject	Taken from
130	-	126	Stones after cleaning	E
131	-	126	Stones – circle of posts in background	E
132	-	126	Stones – circle of posts in background	E
133	-	118	Pre ex of slot B through stones	SW
134	-	118	Pre ex of slot A through stones	SW
135	-	118	Pre ex of slot A through stones	SW
136	-	003/004	Voided feature 003/004	W
137	-	003/004	Voided feature 003/004	W
138	-	126	Slot C through linear stone feature	E
139	-	118	Post ex Slot A	SSW
140	-	093/094	Post ex of feature	N
141	-	096/097	Post ex of feature	N
142	-	045/046	Pottery in situ	W
143	-	045/046	Pottery in situ	W
144	-	045/046	Pottery in situ	W
145	-	119/120	Pre ex of linear feature/spread	W
146	-	063/064	Pre ex of feature	S
147	-	063/064	Post ex of feature	S
148	-	121/122	Pre ex of feature	S
149	-	123/124	SW facing section of pit	SW
150	-	121/122	Post ex of feature	S
151	-	119/120	Half section of posthole feature – E facing	E
152	-	045/046	Post ex of pit	W
153	-	109	Pre ex of possible feature	SW
154	-	109	Pre ex of possible feature	SW
155	-	116	Pre ex of feature	S
156	-	-	Pre ex of possible feature	SW
157	-	119/120	Post ex of pit/truncated posthole	E
158	-	123	Post ex of pit	SW
159	-	112	Pre ex of 112	W
160	-	132/134	Pre ex of possible features	SW
161	-	111	Pre ex of feature	S
162	-	113	Pre ex of 113	W
163	-	132	Half section of posthole 132	SW
164	-	134	Half section of posthole 134	SW
165	-	111/125	Post ex of feature	S
166	-	131/113	Half section of posthole – W facing section	W
167	-	107	Pre ex of feature	E
168	-	107	Pre ex of feature	N
169	-	023	S end of enclosure	E
170	-	023	Southern area	S
171	-	-	Possible structure in enclosure	E
172	-	-	Possible structure in enclosure	W
173	-	-	Large pits from south	S
174	-	-	Site in the snow	E
175	-	-	Site in the snow	SW
176	-	-	Site in the snow	E
177	-	-	Teram-ed stone feature	N
178	-	-	Site in the snow	E
179	-	126-128	Linear stone feature post cleaning	SE
180	-	126-128	Linear stone feature post cleaning	SE
181	-	126-128	Linear stone feature post cleaning	E
182	-	126-128	Linear stone feature post cleaning	E
183	-	126-128	Linear stone feature post cleaning	E
184	-	126-128	Linear stone feature post cleaning	E

Frame	Area	Context No.	Subject	Taken from
185	-	126-128	Association between both stone features	E
186	-	126-128	Association between both stone features	E
187	-	-	Close up of stones	NW
188	-	-	Close up of stones	E
189	-	126-128	Close-up of stones and quern stones	N
190	-	126-128	Close up of stones and quern stones	NE
191	-	126-128	Close up of stones in central area	E
192	-	126-128	Close up of stones in central area	N
193	-	126-128	Close up of stones in central area	E
194	-	126-128	Close up of stones in central area	E
195	-	126-128	Close up of stones in central area	E
196	-	126-128	Close up of stones in central area	N
197	-	126-128	Close up of stones in Northern area	N
198	-	126-128	Close up of stones in Northern area	N
199	-	126-128	Close up of stones in Northern area	N
200	-	126-128	Close up of stones where sf22 found	N
201	-	137	Pre ex of large pit	W
202	-	137	Pre ex of large pit	W
203	-	034	Pre ex of large pit	W
204	-	-	Enclosure with snow on it	S
205	-	-	Enclosure with snow on it	S
206	-	-	Enclosure with snow on it	S
207	-	139	Pre ex of feature (to W of stone feature)	W
208	-	-	Enclosure with snow	E
209	-	137/138/140	Half section of shallow scoop (N facing section)	N
210	-	137/138/140	Half section of shallow scoop (N facing section)	N
211	-	-	Enclosure in the snow	S
212	-	034/033/141	Half section of shallow scoop	SE
213	-	-	Possible structure	S
214	-	-	Possible structure	S
215	-	-	Possible structure	E
216	-	-	Possible structure	N
217	-	142	Pre-ex of posthole	W
218	G	-	South facing section of T239	S
219	G	-	T239 plan view	W
220	G	-	N facing section of T238	N
221	G	-	T238 plan view	W
222	G	-	T238 plan view	W
223	-	142	Half section	W
224	-	137/138/140	Half section of 140	N
225	-	137/138/140	Half section of 140	N
226	-	137/138/140	Half section of 140	N
227	-	166/167	Pre ex of posthole	SW
228	-	144/145	Pre ex of posthole	W
229	-	144/145	W facing section of posthole	W
230	-	158/159	Pre-ex of posthole	W
231	-	137/138/140	Post ex of scoop 140	S
232	-	166/167	SW facing section of posthole	SW
233	-	142/143	Post ex	W
234	-	154/155	Pre ex of posthole	SW
235	-	160/161	Pre ex of posthole	NW
236	-	166/167	Mid ex of posthole	SW
237	-	144	Post ex of posthole	W
238	-	158/159	Mid ex of half section of posthole 158	S
239	-	164/165	Pre ex of posthole	W

Frame	Area	Context No.	Subject	Taken from
240	-	162/163	Pre ex of posthole	NW
241	-	154/155	Mid ex of half section of posthole 154	SW
242	-	166/167	Post ex of posthole	SW
243	-	-	Working shot – excavation of roundhouse	NW
244	-	162/163	NW facing section of posthole 162	NW
245	-	160/161	NW facing section 160 with packing stones	NW
246	-	164/165	W facing section of posthole	W
247	-	162/163	Posthole within structure A	N
248	-	154/155	Post ex of posthole 154	SW
249	-	158/159	Post ex of posthole 158	SW
250	-	160/161	Post ex of 160	NW
251	-	168/169	Pre ex of posthole	W
252	-	152/153	Pre ex of posthole	W
253	-	156/157	Pre ex of posthole 156	SW
254	-	150/151	Pre ex of posthole 150	W
255	-	164/165	Post ex of posthole 164	W
256	-	168/109	NW facing section of posthole 168	NW
257	-	146/147	Pre-ex of posthole 146	SW
258	-	150/151	Half section of posthole 150	NW
259	-	152/153	Mid ex half section of posthole 152	W
260	-	156/157	Mid ex half section of posthole 156	NW
261	-	156/157	Mid ex half section of posthole 156	NW
262	-	168/169	Post ex of posthole 168	NW
263	-	148/149	Pre ex posthole 148	-
264	-	146/147	NW facing section of posthole	NW
265	-	150/151	Post ex of posthole 150	NE
266	-	148/149	NW facing section of posthole 148	NW
267	-	-	Pre ex of posthole/pit	NW
268	-	152/153	Post ex of posthole 152	NW
269	-	156/157	Post ex of posthole 156	SW
270	-	148/149	Post ex of posthole 148	NW
271	-	146/147	Post ex of posthole 146	NW
272	-	172	Mixed clay deposit below 127	E
273	-	172	Mixed clay deposit below 127	SE
274	-	023	Pre ex of slot C	NE
275	-	023/024	NW facing section of Slot D	NW
276	-	023/024	NW facing section of Slot D	NW
277	-	023/024	W facing section of Slot H	W
278	-	023/024	W facing section of Slot H	W
279	-	024	Slot I	W
280	-	024	East facing section of Slot I	E
281	-	024	West facing section of Slot G	W
282	-	-	N facing section of stone feature	S
283	-	-	N facing section of stone feature – oblique	NW
284	-	-	S facing section of stone feature	N
285	-	-	S facing section of stone feature – oblique	NW
286	-	-	Working shot enclosure – showing Laura	NW
287	-	175/176	Pre ex of feature	S
288	-	023/024	Enclosure with slots	SW
289	-	023/024	Enclosure with slots	SE
290	-	-	Working shot	SE
291	-	-	Working shot	SE
292	-	123/124/173/174/126	Truncation of 123 by cut of stones/pit edge 173	S
293	-	123/124/173/174/126	Truncation of 123 – detail, showing edge of 174	S
294	-	174	W edge of 174	S

Frame	Area	Context No.	Subject	Taken from
295	-	126/185	W extent of stones 126 showing cut 185	E
296	-	126/185	Detail of west extent cut 185	NE
297	-	173/174/127	Pre ex of pit 173 and deposits 174/127	E
298	-	173	Pre ex of pit 173	E
299	-	174/127	Detail of 174/127 pre ex	E
300	-	023	View of stones truncating enclosure 023	W
301	-	023	View of stones truncating enclosure 023	W
302	-	023/024	NW facing section of enclosure against trench edge at N extent	NW
303	-	023/024	NW facing section of enclosure against trench edge at N extent	NW
304	-	023/024	NW facing section of enclosure against trench edge at N extent	NW
305	-	023/024	E enclosure entrance terminal – pre ex	SW
306	-	023/024	E enclosure entrance terminal – pre ex	W
307	-	023/024	E enclosure entrance terminal – pre ex – E side	W
308	-	023/024	E enclosure entrance terminal – pre ex – E side	W
309	-	023/024	E enclosure entrance terminal – pre ex – E side	SW
310	-	173/174	Mid ex after 173 half section	E
311	-	177/178	Half section of posthole – NW facing	NW
312	-	179/180	S facing section	S
313	-	126	Stone with peck-marks	NW
314	-	126	Stone with peck-marks	NW
315	-	126	Detail of markings	NW
316	-	126	Detail of markings	NW
317	-	126	Peck-marked stones	E
318	-	126	Stones within central area once baulk removed	E
319	-	126	Stones within central area once baulk removed	S
320	-	126	Close up of worked stone to S of 126	E
321	-	173/181/174/127	Post ex of slot through pit 181 and deposits 174/127	S
322	-	173/181/174/127	Post ex of slot through pit 181 and deposits 174/127	E
323	-	173/181/174	E facing section of slot	E
324	-	174	S facing section of slot	S
325	-	173/181	Pit 181 post ex	S
326	-	177/178/023/024	half section of posthole 177 and enclosure 023	W
327	-	177/178/023/024	half section of posthole 177 and enclosure 023	W
328	-	177/178/023/024	half section of posthole 177 and enclosure 023	W
329	-	177/178/023/024	half section of posthole 177 and enclosure 023	W
330	-	179/023	W facing section	W
331	-	185/187	View of 185 before lifting stones	E
332	-	185/187/174/181	View of 185 before lifting stones with 174/181	SE
333	-	185/187	View of 185/187 before lifting stones	W
334	-	-	W facing section of baulk	W
335	-	189	Cut 189 after removal of 187	NW
336	-	189	Cut 189 after removal of 187	E
337	-	189	Cut 189 after removal of 187	W
338	-	198	Half section of possible hearth feature 198	SE
339	-	023/187	Enclosure truncated by stones	E
340	-	023/187	Enclosure truncated by stones	SE
341	-	023/177	Post ex of two features	E
342	-	023/177	Post ex of posthole 177 and enclosure 023	E
343	-	023/177	Post ex of posthole 177 and part of enclosure 023	E
344	-	070/071	Pre ex of feature	W
345	-	191	Pre ex of feature	N
346	-	198	Pre ex of hearth deposit	E

Frame	Area	Context No.	Subject	Taken from
347	-	198	Pre ex of hearth deposit	E
348	-	191	Post ex of charcoal spread	N
349	-	194/195	Pre ex of posthole	W
350	-	194/195	Pre ex of posthole	W
351	-	196/197	Pre ex of posthole	N
352	-	192/193	NW facing section of posthole	NW
353	-	196/197	NE facing section of posthole	NE
354	-	196	Post ex of pit 196	-
355	-	192	Post ex of posthole 192	-
356	-	194/195	N facing section of pit 194/195	-
357	-	194	Post ex of pit	NW
358	-	126	Stones after removal of baulk	E
359	-	126	Stones after removal of baulk	S
360	-	126	Stones after removal of baulk	W
361	-	126	Stone – worked	W
362	-	194/195	Post ex of posthole 195	NW
363	-	194/195	Post ex of posthole 195	NW
364	-	187/174/181	Post ex of stones 187, deposit 174, pit 181	NW
365	-	187/174/181	Post ex of stones 187, deposit 174, pit 181	N
366	-	-	Pre ex of linear feature	-
367	-	185	Post ex removal of stones 126	E
368	-	185	Post ex removal of stones 126	E
369	-	185	Post ex removal of stones 126	S
370	-	185	Post ex removal of stones 126	NW
371	-	079/080	E facing section of posthole and slot	E
372	-	047/048	Slot through feature	E
373	-	-	W facing section of posthole and slot	W
374	-	079/047	Mid ex shot	W
375	-	129	Pre ex of possible posthole	W
376	-	129	W facing section of posthole	W
377	-	129/205/023/024	W facing section – slot across posthole and enclosure	N
378	-	129/205/023/024	Mid ex – slot across posthole and enclosure	N
379	-	206/207	Possible feature pre ex	W
380	-	206/207	Possible feature pre ex	W
381	-	129/205/023/024	Post ex of posthole 205 within enclosure 023	N
382	-	129/205/023/024	Post ex of posthole 205 within enclosure 023	N
383	-	206/207	Half section of 206	SW
384	-	206/207	Half section of 206	SW
385	-	199/201/203	Post ex of features	NW
386	-	199/201/203	Post ex of features	W
387	-	199/201/203	Post ex of features	NW
388	-	199/201/203	Post ex of features	N
389	-	206/207	Post ex of 206	W

File 004: Strip, map and sample excavation

Frame	Area	Context No.	Subject	Taken from
1	-	126	Post cleaning stone feature	S
2	-	126	Post cleaning stone feature	S
3	-	126	Post cleaning stone feature	N
4	-	126	Post cleaning stone feature	N
5	-	126	Post cleaning stone feature	N
6	-	-	N end of stone feature	W
7	-	-	N end of stone feature	W
8	-	-	S area of stone feature	W

Frame	Area	Context No.	Subject	Taken from
9	-	-	Stone feature	N
10	-	126	Close up on quern stone sf016	E
11	-	126	Close up on central area	E
12	-	126/187	Post ex of stone feature	-
13	-	126/187	Post ex of stone feature	S
14	-	126/187	Post ex cut for stone feature	S
15	-	023	Entranceway to enclosure	E
16	-	023	Entranceway to enclosure	E
17	-	023	Entranceway to enclosure	E
18	-	079/047/208	Linear features at roundhouse	W
19	-	079/047/208	Linear features at roundhouse	W
20	-	-	Enclosure and features	SW
21	-	-	Enclosure entrance	SW
22	-	-	Enclosure and features	SW
23	-	-	Roundhouse towards enclosure entrance	E
24	-	079/047/208	Linear features at roundhouse	E
25	-	079/047/208	Close up of linear feature	E
26	-	079/047/208	Close up of linear feature	E
27	-	079/047/208	Close up of linear feature	NW
28	-	199/201/203	Close up of linear feature	S
29	-	199/201/203	Close up of linear feature	SW
30	-	199/201/203	Close up of linear feature	SE
31	-	-	Roundhouse - structure A	E
32	-	-	Roundhouse - structure A	E
33	-	-	Roundhouse - structure A	N
34	-	-	Postholes in baulk at structure A	NW
35	-	-	Roundhouse – structure A	E
36	-	-	Roundhouse – structure A	E
37	-	-	Features to east of enclosure	E
38	-	-	Features to east of enclosure	E
39	-	-	Panorama shot from old railway	-
40	-	-	Panorama shot from old railway	-
41	-	-	Panorama shot from old railway	-
42	-	-	Panorama shot from old railway	-
43	-	-	Panorama shot from old railway	-
44	-	-	Panorama shot from old railway	-
45	-	-	Panorama shot from old railway	-
46	-	-	Panorama shot from old railway	-
47	-	-	Panorama shot from old railway	-
48	-	-	Panorama shot from old railway	-
49	-	-	Panorama shot from old railway	-
50	-	-	Panorama shot from old railway	-
51	-	-	Panorama shot from old railway	-
52	-	-	Panorama shot from old railway	-
53	-	-	Panorama shot from old railway	-
54	-	-	Panorama shot from old railway	-
55	-	-	Panorama shot from old railway	-
56	-	-	Post ex of 199,201,203,208,047,079	NW
57	-	-	Post ex of 079, 047, 209	SW
58	-	-	Post ex of 079, 047, 208	N
59	-	-	North eastern terminal end of enclosure – packing stones	N
60	-	-	North eastern terminal end of enclosure – fire cracked stone	W
61	-	-	Southern end of enclosure	NW
62	-	-	Southern terminal end of enclosure	S
63	-	-	Mid enclosure	S

Frame	Area	Context No.	Subject	Taken from
64	-	-	Mid enclosure	W
65	-	-	Northern end of enclosure	NW
66	-	-	Northern end of enclosure	NW
67	-	-	Shallow pits, eastern area of enclosure	E
68	-	-	Roundhouse B, NE of enclosure	E
69	-	-	Roundhouse B	N
70	-	-	Features to west of enclosure	W
71	-	-	Cut for linear feature	N
72	-	-	Cut for linear feature	N
73	-	-	Panorama shot of site	-
74	-	-	Panorama shot of site	-
75	-	-	Panorama shot of site	-
76	-	-	Panorama shot of site	-
77	-	-	Panorama shot of site	-
78	-	-	Panorama shot of site	-
79	-	-	Panorama shot of site	-
80	-	-	Panorama shot of site	-
81	-	-	Panorama shot of site	-
82	-	-	Panorama shot of site	-
83	-	-	Panorama shot of site	-
84	-	-	Panorama shot of site	-

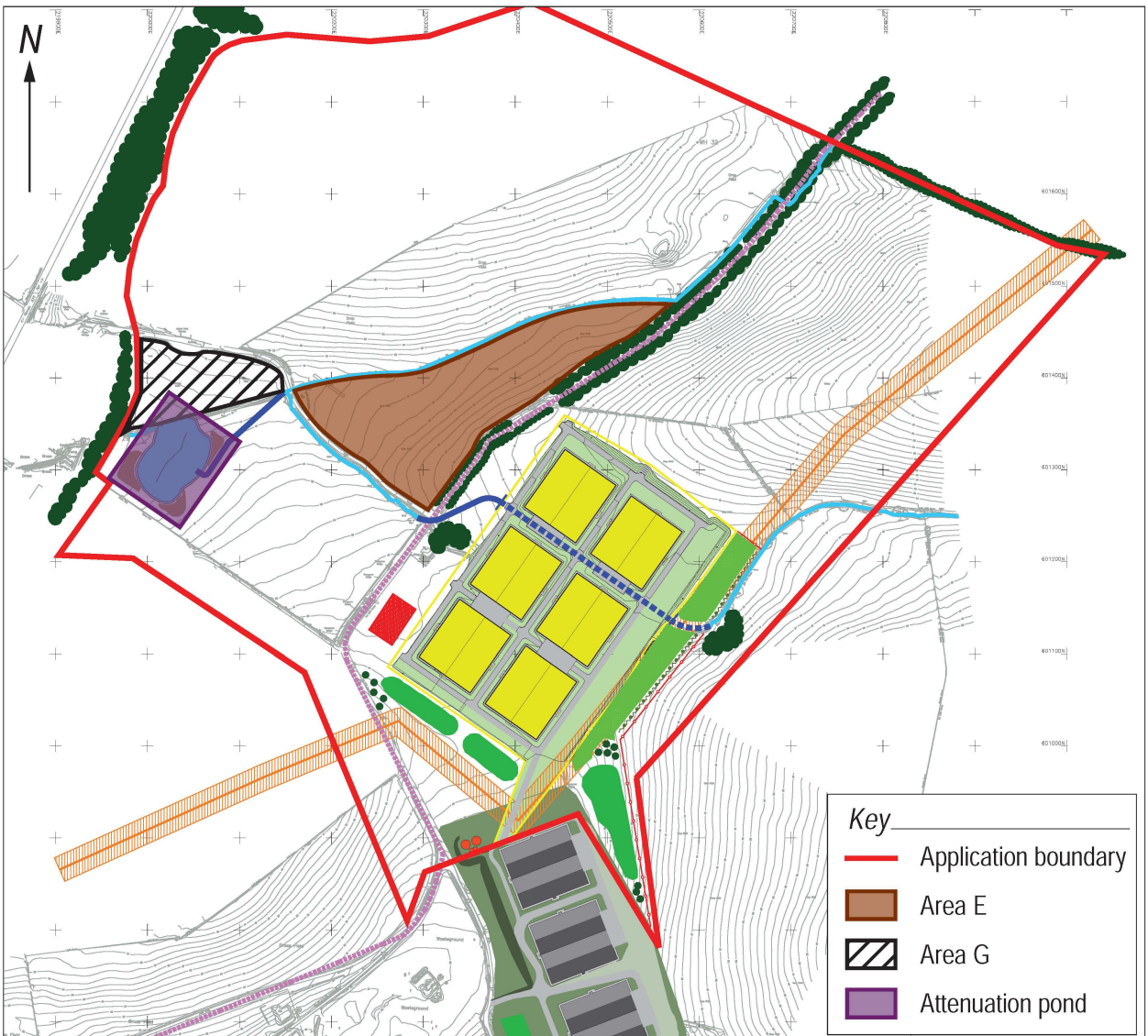
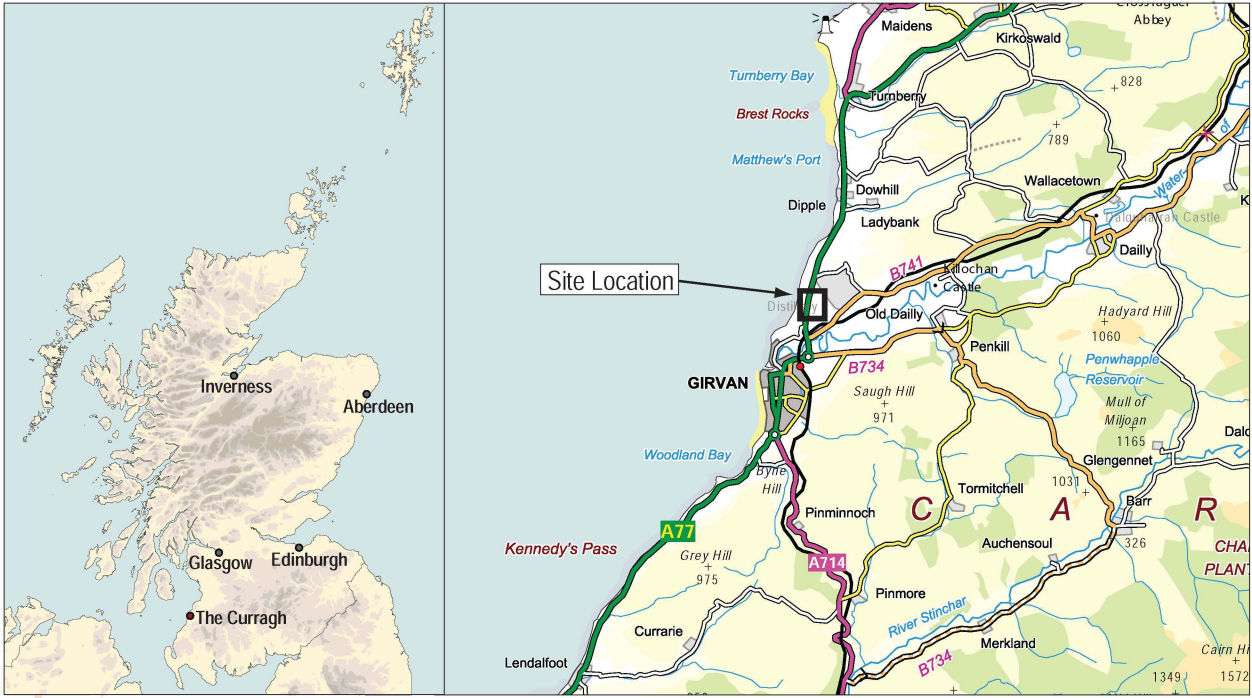
Appendix F: Written Scheme of Investigation**CURRAGH, GIRVAN, SOUTH AYRSIRE**

ARCHAEOLOGICAL WRITTEN SCHEME OF INVESTIGATION

PROJECT 3608

Contents

1.0	Executive Summary	1
2.0	Introduction	1
3.0	Site Location	1
4.0	Archaeological Background	1
5.0	Aims and Objectives	2
6.0	Methodology	2
	Strip, Map and Sample Excavation	2
	Environmental Sampling in Area G	4
	Further Mitigation	4
	Human Remains	4
7.0	Report Preparation and Contents	4
8.0	Copyright	5
9.0	Publication	5
10.0	Archive	5
11.0	Finds Disposal	6
12.0	Personnel and Liaison	6
13.0	Timetable	6
14.0	Monitoring	6
15.0	Health & Safety and Insurance	6



Executive Summary

- 1.1 This Written Scheme of Investigation forms the archaeological method statement for the archaeological works associated with the development of the site known as the Curragh, Girvan, South Ayrshire. This document acts as an overall project design for the five phases of the development and provides specific scope for Phase 1 Curragh (warehouses 4-9) as required for approval by West of Scotland Archaeology Service (WoSAS), the archaeological advisers to South Ayrshire Council, prior to the commencement of archaeological fieldwork.

Introduction

- 2.1 This Written Scheme of Investigation (WSI) sets out the scope and methodology for the archaeological mitigation works for the proposed development site known as the Curragh, Girvan in South Ayrshire (Planning Ref: 11/01426/APPM). A programme of archaeological work, including environmental sampling and strip, map and sample of potentially significant areas will be undertaken to establish the presence, extent and nature of any significant archaeological remains. Should significant remains be identified preservation through record will be required, including excavation and publication.
- 2.2 This WSI outlines the programme of archaeological works that are needed to mitigate the effects of the development. It details the methodology to be employed in implementing the Stage 2 excavation and Stage 3 post excavation analysis and publication for all phases of the development and provides suitable mitigation for phase 1 (warehouses 4-9) in particular. Further phases will be specified in *addenda* to this document for each phase of development. These *addenda* will be submitted for agreement of the archaeological advisers to South Ayrshire Council, prior to the commencement of any archaeological work. All phases of work will be funded by the developer as required by the Planning Authority.

Site Location

- 3.1 The development area lies approximately 4 km to the NNE of Girvan (NGR centre: NS 2048 0144) and covers approximately 630,000 square metres and sits between 20 m and 55 m AOD. It is largely rural and bounded by a mixture of pasture and arable fields on all sides. The western edge is close to Burnside Nurseries, Curragh farmsteads and the A77 and its southern extent is close to newly constructed warehouses belonging to William Grant and Sons Distillers Ltd.

Archaeological Background

- 4.1 A review of desk-based sources was undertaken in advance of evaluation trenching (see Shearer & Sneddon 2007) and revealed 20 known cultural heritage sites within 1 km of the centre of the proposed development. Within the then proposed site boundary a further three sites were identified from cartographic sources and six during a walk-over survey. Only one site previously recorded was located within the site boundary. This was at Ladywell ((NGR: NS 2040 0075) (NMRS site NS20SW 35) and referred to a watching brief carried out in July 1996 during which only two flints were recovered and no archaeological features (*ibid* 2007, 11).
- 4.2 Since 2007, the centre of the proposed development site has remained largely the same but the boundary has altered in part. A phase of evaluation was undertaken at the Curragh, in advance of a planning application for three new warehouses at Ladywell. This identified, at one location, an area of potentially significant archaeological remains (Maguire 2008).
- 4.3 In February 2010 a phase of trial trench evaluation was conducted across the warehouse footprints covering a 10% sample of the area. This revealed several archaeological features including a probable burnt mound trough and pit containing prehistoric artefacts. The prehistoric remains were clustered along the west-facing side of the burn that bisects the warehouse development (area E) and were accompanied by stratified environmental deposits within area G. Further investigation work was recommended for both areas in the form of strip, map and sample for area E and environmental sampling in area G.

Aims and Objectives

5.1 The aim of the archaeological work is:

- to identify any archaeological features and deposits within the development area;
- to ensure that any surviving archaeological remains within the development area are excavated and recorded to an appropriate level.

5.2 The objectives are therefore to:

- Conduct an archaeological strip, map and sample of area E within the development area, by stripping the topsoil to establish the presence or absence of any archaeological remains, and their character, date and extent if surviving;
- Conduct an environmental sampling strategy within area G to provide details on the development of this part of the site.
- Submit a report to data structure level for approval to the planning authority on completion of the archaeological fieldwork, which includes an outline of the scope of any further archaeological works should significant archaeology be encountered.

Methodology

- 6.1 The programme of archaeological works will involve strip, map and sample excavation of area E of the development where phases of warehouse building are likely to impact upon it. During phase one of the development (warehouses 4-10) this area is unlikely to be impacted and consequently no strip, map and sample will be conducted. In the event that groundworks are necessary within this area for SI works an archaeological watching brief will be conducted.
- 6.2 In relation to area G of the site, a programme of environmental sampling will be conducted where phases of warehouse building are likely to impact upon this area. During phase one of the development (warehouses 4-10) this area will be impacted upon and environmental sampling will be conducted. In the event that groundworks are necessary within this area for SI works an archaeological watching brief will be undertaken.
- 6.3 The construction of a proposed attenuation pond to the south of area G in an area not previously investigated during the evaluation phase of work in 2010 will require to be dealt with as part of the mitigation works. Work here will take the form of a strip, map and sample excavation of the proposed construction area around the pond and within the pond area (estimated as 6,000 m²).

Strip, Map and Sample Excavation

- 6.4 Excavation at the site will be focussed within one large area during phase one, which will be stripped of all topsoil, so that all archaeological features can be mapped, sampled and then excavated and recorded should they prove to be significant. Stripping of topsoil will be limited to the attached area. Excavation will initially be by machine under close archaeological supervision. The exposed area will then be cleaned to identify any archaeological features.
- 6.5 Any features that are identified during the site strip will be mapped and investigated to determine their age, extent and significance. Recording will be by pro-forma sheets, drawings and photographs. Potentially significant features will be partly excavated to determine the date of the deposits and their extent.
- 6.6 All significant features will be fully excavated and recorded in line to Institute of Archaeology (IfA) standards.
- 6.7 The written record of all archaeological features, deposits and finds will be by means of conventional pro-forma sheets. Scaled hand-drawn plans will also be made at 1:20 and sections at 1:10. Black and white record photographs will also be taken, along with digital images. The locations and dimensions of all features will be recorded in such a way as to tie them to the Ordnance Survey grid and National Datum.



Phase	Warehouse ID	Area (sqm)	Volume (cu m)
Phase 1	Warehouses 4-9	10,117	10,117
Phase 2	Warehouses 10-15	10,117	10,117
Phase 3	Warehouses 16-19	10,117	10,117
Phase 4	Warehouses 20-25	10,117	10,117
Phase 5	Warehouses 26-30	10,117	10,117

barr technical services 103 CORKINANN ROAD P4A 3DE CORK T12 8D90 F: 021 461 8600	FOR APPROVAL	Curragh Development Curragh Delivery	Full Development Proposed Site Layout
---	---------------------	--	---

DATE: 04/04/2012	SCALE: 1:500
DRAWN: [Signature]	CHECKED: [Signature]
PROJECT: C-C-(90)-020	CLIENT: [Signature]

- Phase 1 Warehouses 4-9 (2013 - 2016)
- Phase 2 Warehouses 10-15 (2016 - 2020)
- Phase 3 Warehouses 16-19 (2020 - 2023)
- Phase 4 Warehouses 20-25 (2023 - 2026)
- Phase 5 Warehouses 26-30 (2026 - 2030)
- Site Area
- Proposed Parking
- Proposed Landscaping
- Proposed Roads
- Proposed Drainage
- Proposed Fencing
- Proposed Security
- Proposed Access
- Proposed Services
- Proposed Utilities
- Proposed Other

- 6.8 All work will be conducted to comply with WoSAS standard conditions for archaeological fieldwork.
- 6.9 The significance of any archaeological remains encountered will be determined by the planning authority as advised by WoSAS who will advise on any further requirements, so that the development meets the terms of the archaeological planning condition.

Environmental Sampling in Area G

- 6.10 A phase of environmental sampling will be conducted within area G during phase one of the development, where it is impacted upon by the phase one development. This will take the form of linear trenching to expose the sealed and preserved organic deposits below the hill wash.
- 6.11 Sampling will take the form of monoliths positioned to provide a sequence through the organic layers and hillwash deposits and provide material for further analysis.
- 6.12 Recording will be by pro-forma sheets, drawings and photographs. Any potentially significant features will be partly excavated to determine the date of the deposits and their extent.
- 6.13 Any significant features will be fully excavated and recorded in line to Institute of Archaeology (IfA) standards.
- 6.14 A written record for all samples taken will be produced together with scaled hand-drawn plans at 1:20 and sections at 1:10. Black and white record photographs will also be taken, along with digital images. The locations and dimensions of all samples will be recorded in such a way as to tie them to the Ordnance Survey grid and National Datum.

Further Mitigation

- 6.15 The works covered within this WSI will be deemed final phase mitigation for phase one of the development at the site and no watching brief will be necessary.
- 6.16 Should significant archaeological deposits or secure organic layers be excavated a post-excavation phase of work will be necessary. In this scenario, a further amendment (addendum) to the written scheme of investigation will be produced and further costs outlined.
- 6.17 The methodology to be employed during Stage 3 (post-excavation analysis and publication), would be specified in an addendum to this document known as a Post-Excavation Research Design (PERD). This addendum, will be submitted by the applicant for the approval of South Ayrshire Council, prior to the commencement of any Stage 3 archaeological works. Although South Ayrshire Council will not fully discharge any planning condition until such time as it is satisfied that all stages of archaeological fieldwork have been completed, it will permit phases of development to commence as soon as each stage of archaeological work is completed.

Human Remains

- 6.18 Though there is nothing to suggest their discovery is likely, should human remains be encountered, GUARD will notify the local police and WoSAS immediately and thereafter follow prescribed procedures for their treatment, in accordance with legal requirements.

Report Preparation and Contents

- 7.1 A report detailing the results of the archaeological fieldwork will be submitted to the client within two weeks of completion of fieldwork and, subject to client approval, then submitted to WoSAS for their comment. The report will take the form of a Data Structure Report and will contain an analysis of the results of the archaeological evaluation. The report will include a full descriptive text that will characterise the date and extent of any archaeological deposits. It will also include plans at an appropriate scale showing the area subjected to ground-breaking works, environmental sampling, archaeological features and archiving lists of all finds, samples, field drawings and photographs.
- 7.2 If appropriate, the report will also include an addendum to this WSI for further archaeological fieldwork, should significant archaeology have been encountered.

- 7.3 The report will include the following:
- executive summary;
 - a site location plan to at least 1:10,000 scale with at least an 8 figure central grid reference;
 - OASIS reference number; unique site code;
 - Planning application number;
 - contractor's details including date work carried out;
 - nature and extent of the proposed development, including developer/client details;
 - description of the site history, location and geology;
 - a site plan to a suitable scale and tied into the national grid so that features can be correctly orientated;
 - discussion of the results of field work;
 - context & feature descriptions;
 - features, number and class of artefacts, spot dating & scientific dating of significant finds presented in tabular format;
 - plans and section drawings of the features drawn at a suitable scale;
 - initial assessment of relevant finds/samples if appropriate;
 - recommendations regarding the need for, and scope of, any further archaeological work such as excavation (Stage 2) and Post-excavation finds analysis, conservation & publication (Stage 3);
 - bibliography
- 7.4 An appropriate number of hard copies and digital pdf copies of the report will be prepared for the client and sent to the archaeological adviser for agreement.
- 7.5 The hard copy report will be presented in an ordered state and bound within a protective cover/sleeve. The report will be page numbered and supplemented with section numbering for ease of reference.

Copyright

- 8.1 Unless otherwise agreed copyright for any report resulting from the archaeological work undertaken as part of the project will be deemed the intellectual property of GUARD Archaeology Ltd.

Publication

- 9.1 A summary of the project results will be submitted to *Discovery and Excavation in Scotland*. In the event of minor archaeological remains being encountered during the archaeological fieldwork, it is proposed that a comprehensive report submitted to *Discovery and Excavation in Scotland*, will form the final publication of the site. A copy of this will be included in the Data Structure Report.

Archive

- 10.1 The archive for the project, including a copy of the report, will be submitted to the National Monuments Records for Scotland within three months of completion of all relevant work.
- 10.2 The online OASIS form at <http://ads.ahds.ac.uk/project/oasis/> will be completed within 3 months of completion of the work. Once the Data Structure Report has become a public document by submission to or incorporation into the SMR, the archaeological adviser to the planning authority will validate the OASIS form thus placing the information into the public domain on the OASIS website.

Finds Disposal

- 11.1 The arrangement for the final disposal of any finds made in connection with the archaeological work, will be deposited in keeping with Scottish legal requirements as set out in the Treasure Trove Code of Practice published by the Scottish Government in December 2008. The laws relating to Treasure Trove and *Bona Vacantia* in Scotland apply to all finds where the original owner cannot be identified. This includes all material recovered during archaeological fieldwork. Accordingly, all assemblages recovered from archaeological fieldwork are claimed automatically by the Crown and must be reported to the Scottish Archaeological Finds Allocation Panel through its secretariat, the Treasure Trove Unit. In the event of the discovery of small finds, a filled-out copy of the form "Declaration of an Archaeological Assemblage from Fieldwork" and two copies of the pertinent Data Structure Report will be submitted to the Panel at the conclusion of the fieldwork. The Panel will then be responsible for recommending to the Queen's and Lord Treasurer's Remembrancer which museum should be allocated the finds. All artefacts will be temporarily stored by GUARD until a decision has been made by the panel.

Personnel and Liaison

- 12.1 The GUARD team will comprise the following qualified and experienced GUARD archaeologists:
- Project Manager: John Atkinson
 - Project Director (on-site Archaeologist): Alan Hunter Blair
 - Finds and Environmental Support and Conservation: Aileen Maule
 - Illustrator: Gillian McSwan
- 12.2 The GUARD Project Manager, John Atkinson, will be the point of contact for the archaeological works. A full CV for individuals concerned can be made available on request.

Timetable

- 13.1 GUARD Archaeology aim to begin work on as soon as the WSI has been agreed. The programme of strip, map and sample excavation and environmental sampling during phase one is estimated to last for between three and five weeks depending on the extent of the archaeology. On completion of the works a report to data structures level will be completed within three weeks.
- 13.2 Should post-excavation analysis and reporting be merited, a Post-Excavation Research Design will be produced within one month of completion of all fieldwork at the site. Submission of final publication reports, should they be warranted, will be undertaken within a year of agreement of the PERD.

Monitoring

- 14.1 The proposed start date for the archaeological fieldwork will be arranged in due course. The archaeological adviser to the planning authority will be given at least one week's notice prior to the commencement of fieldwork. The archaeological adviser and the client will be informed of the site mobile phone number prior to the start date so that monitoring visits can be arranged. The archaeological adviser will be informed of the start date and estimated number of days on site in advance, so that they can arrange a site visit at a suitable time.

Health & Safety and Insurance

- 15.1 GUARD Archaeology Ltd adheres to the guidelines and standards prescribed for archaeological fieldwork set down in the Institute for Archaeologists approved Health and Safety in Field Archaeology document. It is standard GUARD policy, prior to any fieldwork project commencing, to conduct a risk assessment and to prepare a project safety plan, the prescriptions of which will be strictly followed for the duration of all archaeological fieldwork. Copies of the resultant project safety plan and of GUARD's Fieldwork Safety Policy Statement may be viewed upon request.

- 15.2 GUARD Archaeology Ltd also possesses all necessary insurance cover, proofs of which may be supplied upon request.

GUARD Archaeology Limited
52 Elderpark Workspace
100 Elderpark Street
Glasgow
G51 3TR

Tel: 0141 445 8800

Fax: 0141 445 3222

email: info@guard-archaeology.co.uk



www.guard-archaeology.co.uk