

Dunfermline North, Fife Archaeological Evaluation Data Structure Report Project 4107

**Dunfermline North, Fife
Archaeological Evaluation
Data Structure Report**

On behalf of: I & H Brown Ltd

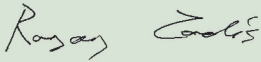

NGR: NT 0807 8855 (centered)

Project Number: 4107

Report by: Iraia Arabaolaza & Kenneth Green

Illustrations: Gillian McSwan

Project Manager: Ronan Toolis

DRAFT	Ronan Toolis	FINAL	Ronan Toolis
	Commercial Director		Commercial Director
			
23/09/15		02/10/15	

*This document has been prepared in accordance
with GUARD Archaeology Limited standard operating procedures.*

**GUARD Archaeology Limited
52 Elderpark Workspace
100 Elderpark Street
Glasgow
G51 3TR**

**Tel: 0141 445 8800
Fax: 0141 445 3222
email: info@guard-archaeology.co.uk**



www.guard-archaeology.co.uk

Contents

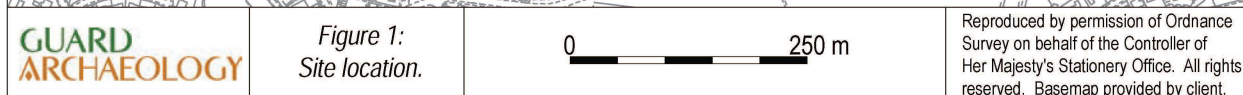
Executive Summary	5
Introduction	5
Site Location, Topography and Geology	6
Archaeological Background	6
Aims and Objectives	6
Methodology	6
Results	7
Discussion	10
Conclusions	10
Acknowledgements	10
Appendices	12
Appendix A: Trench Descriptions	12
Appendix B: List of Contexts	17
Appendix C: List of Finds	18
Appendix D: List of Samples	18
Appendix E: List of Drawings	18
Appendix F: List of Photographs	18
Appendix G: Discovery and Excavation Scotland Entry	25
Appendix H: Written Scheme of Investigation	26

List of Figures

Figure 1: Site location	4
Figure 2: Trench location	7

List of Plates

Plate 1: Working shot of trench 4	5
Plate 2: Pre-ex shot of feature 010 in trench 15	8
Plate 3: NW facing section of feature [005] in trench 11	8
Plate 4: SW facing section of feature 010 in trench 15	8
Plate 5: Pre-ex shot of feature [013] in trench 30	8
Plate 6: Location of possible track in trench 35	9
Plate 7: Trench 35 showing a detail shot of (016)	9
Plate 8: Pre-ex shot of feature [015] from SW	9
Plate 9: Post-ex shot of feature 006 from SW	9
Plate 10: Location of possible track in trench 36	10



Executive Summary

- 1.1 An archaeological evaluation was carried out by GUARD Archaeology Limited, on behalf of I & H Brown Ltd, of an area proposed for residential development at Dunfermline, Fife. The trial trench evaluation of 5% of the total 15.60 ha phase 1 area proposed for development. Though several archaeological features related to modern mining were encountered during the evaluation, none were considered significant and no further archaeological fieldwork within the phase 1 area is considered necessary.

Introduction

- 2.1 This report sets out the results of an archaeological evaluation undertaken by GUARD Archaeology, on behalf of I & H Brown Ltd, between 24th August and 4th September 2015, of the phase 1 area of the Dunfermline SLA (North) development in Fife.
- 2.2 In line with both national and local planning policy, and in keeping with best practice guidance in relation to managing change in the historic environment, a programme of archaeological works was required by Fife Council as a condition of consent for application 13/03683/EIA, Planning Permission in Principle for residential development, employment land, Neighbourhood Centre, Primary School, open space areas including an urban park, path and cycle network and associated works. Specifically, FIFEplan policy 14 was the basis of the condition attached:

Policy 14 – Built and Historic Environment

All archaeological sites and deposits, whether statutorily protected or not, are considered to be of significance. Accordingly, development proposals which impact on archaeological sites will only be supported where:

- Remains are preserved in-situ and in an appropriate setting; or
- There is no reasonable alternative means of meeting the development need and the appropriate investigation, recording, and mitigation is proposed.

In all the above, development proposals must be accompanied with the appropriate investigations. If unforeseen archaeological remains are discovered during development, the developer is required to notify Fife Council and to undertake the appropriate investigations.

- 2.3 Condition 9 of the consented permission states:

BEFORE ANY WORKS START ON SITE, the developer shall secure the implementation of a programme of archaeological work in accordance with a detailed written scheme of investigation which has been submitted by the developer and approved in writing by Fife Council, as Planning Authority.

Reason: In order to safeguard the archaeological heritage of the site and to ensure that the developer provides for an adequate opportunity to investigate, record and rescue archaeological remains on the site, which lies within an area of archaeological importance.

- 2.4 During the course of the evaluation a total of 7,800 square metres of trenching was undertaken, spread over 81 individual trenches arranged in a herring bone pattern across the site (Figure 1).

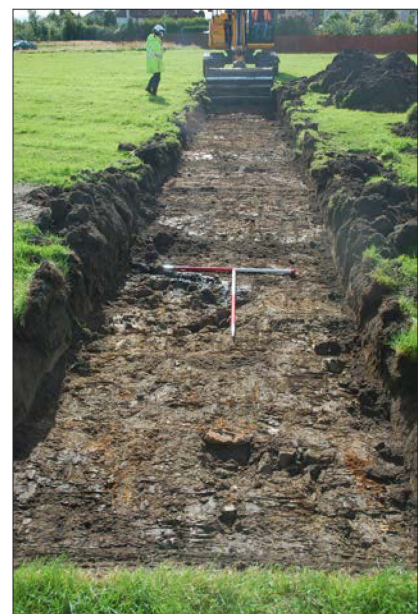


Plate 1: Working shot of trench 4.

Site Location, Topography and Geology

- 3.1 The proposed development is situated on the northern outskirts of Dunfermline in Fife and comprises a number of fields that form an irregularly shaped elongated site. The phase 1 development area covers approximately 15.60 hectares and sits between 125 of metres and 140 of metres AOD.
- 3.2 The site is bounded to the east by the A823, with housing to the south and west and currently consists of undulating fields of rough grass (Figure 1).
- 3.3 Over most of the site, the bedrock is Limestone Coal formation, an Sedimentary Rock Cycles, Clackmannan Group Type. The superficial deposits over the entire area are Devensian Till (www.bgs.ac.uk- accessed on 07-09-2015).

Archaeological Background

- 4.1 A desk-based assessment and walkover survey was undertaken as part of the Environmental Statement for the proposed development and a number archaeological features were identified. Most of these relate to the recent use of the site by the coal industry and cover mine shafts, coal pits and a tram line for moving coal round the site. All of these features within the site have now been demolished or filled in. The only other archaeological reference is to a Bronze Age axe that was found in the immediate area. The discovery of the bronze axe demonstrates the potential for prehistoric remains to survive within the development site.

Aims and Objectives

- 5.1 The aim of the archaeological evaluation is to identify:
 - as yet unknown archaeological features and deposits within the development area;
 - to ensure that any surviving archaeological remains within the development area are recorded to an appropriate level.
- 5.2 The objectives are therefore to:
 - Conduct an archaeological evaluation of 5% of the development area, by machine-cut trial trench excavation, to establish the presence or absence of any archaeological remains, and their character, date and extent if surviving;
 - Submit a report to data structure level for approval to Fife Council Archaeology Unit on completion of the archaeological fieldwork, which includes an outline of the scope of any further archaeological works should any significant archaeology be encountered.
- 5.3 The scope of the archaeological works will establish:
 - that if the archaeological evaluation encounters no significant archaeological remains within the development area, no further archaeological fieldwork will be required.

Methodology

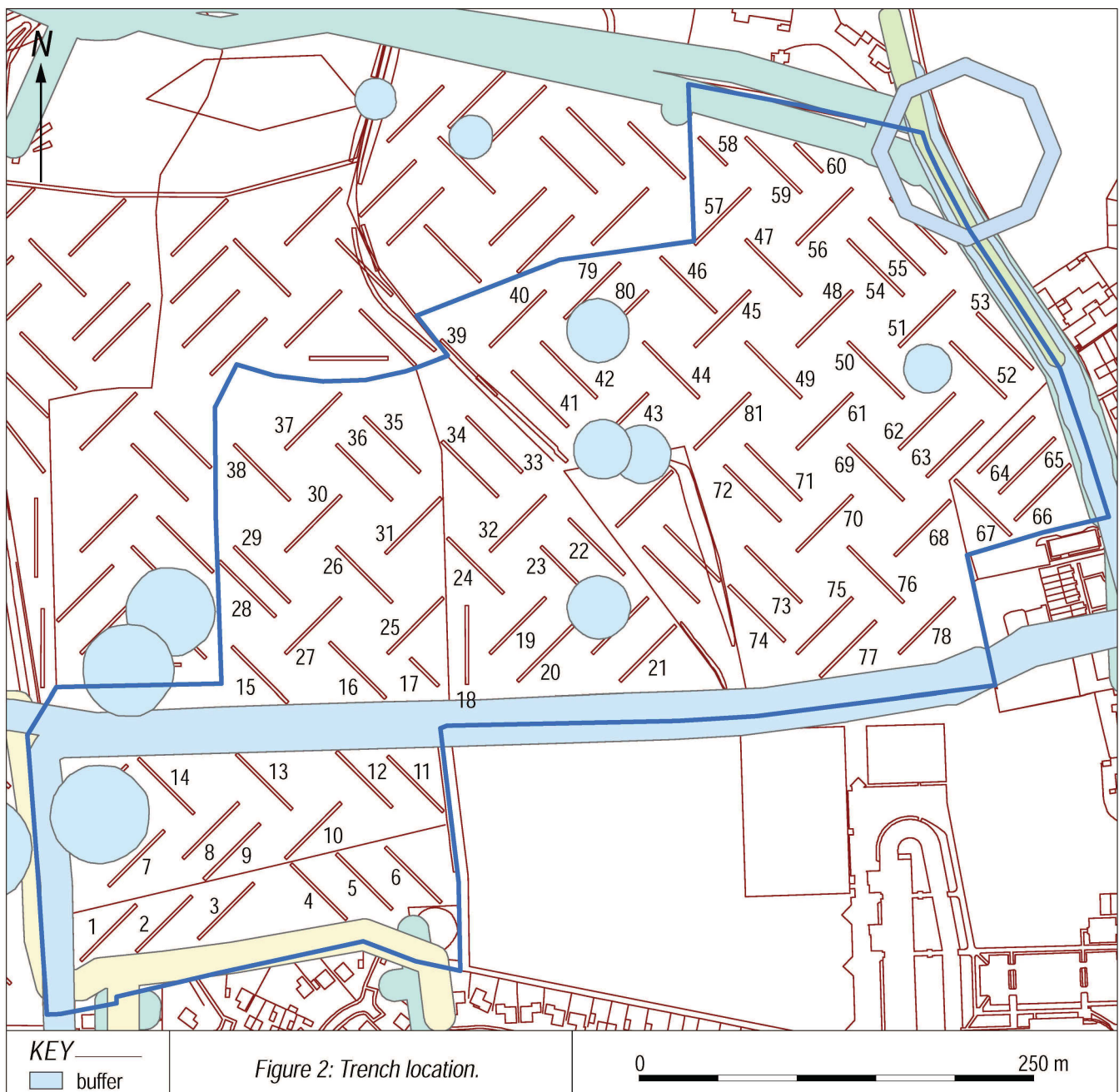
- 6.1 The evaluation adhered to a Written Scheme of Investigation agreed with the Fife Council Archaeologist in advance (see Appendix H). Both the fieldwork and report were conducted following Chartered Institute for Archaeologists (CIfA) guidance and standards of which GUARD Archaeology Limited is a Registered Organisation.
- 6.2 Topsoil was stripped using a mechanical excavator, fitted with a flat-bladed ditching bucket, under close archaeological supervision. The topsoil was removed in linear trenches to the

surface of the subsoil or the first significant archaeological horizon. The trenches were in general approximately 50 metres long by 2 metres wide, although six trenches were smaller at circa 25 metres long by 2 metres wide. Some trenches were moved from their original proposed location to avoid known mineshafts and areas of possible subsidence. Trenches were located to provide a 5% sample (7800 square metres) of the development area and were arranged in a herring bone pattern (Figure 2).

- 6.3 All on-site recording, written, drawn and photographic, was to the standards normally pertaining in archaeological fieldwork. Trenches were surveyed and located within the National Grid using a sub-centimetre. Weather conditions for the evaluation were mostly dry and sunny.

Results

- 7.1 During the course of the evaluation some features of archaeological significance were encountered. 81 trenches were excavated, totalling 7,800 square metres, the results of which are set out in Appendices A-F and Figure 2. For the majority of the area trenches revealed a loose dark greyish brown sandy clay topsoil (0.2 to 0.62 m thick), which lay over grey with mottled yellow, orange and blue sandy clay natural subsoil.



- 7.2 During the evaluation a background scatter of modern artefacts were recorded from topsoil deposits across the area. Of particular note was the recovery of two fragments of modern green glass bottle (SF001) from feature 010 in trench 15 (plate 2) and two fragments of modern brick from an unstratified deposit in trench 73 (SF002).



Plate 2: Pre-ex shot of feature 010 in trench 15.



Plate 3: NW facing section of feature [005] in trench 11.

7.3 Trench 11

- 7.3.1 An isolated feature (020) was identified in this trench. Measuring 0.84 m by 0.82 m, it was 0.26 m deep. However, excavation of this feature did not reveal any datable finds.



Plate 4: SW facing section of feature 010 in trench 15.



Plate 5: Pre-ex shot of feature [013] in trench 30.

7.4 Trench 15

- 7.4.1 Two possible pits were recorded in this trench: 009 and 010. Semi oval in plan, feature 009 measured 1.05 m in length by 0.65 m in width and 0.38 m in depth. It was filled by friable mid brown silty sand (007). No finds were recovered from it.
- 7.4.2 Also semi oval in plan, feature 010 was located towards the centre of the trench. It was similar in size to feature 009, measuring 1.12 m by 0.70 m and 0.22 m deep. Two fragments of blueish coloured glass (SF 001), one of them a base of a bottle, were retrieved from its fill, suggesting a modern date.

7.5 Trench 30

- 7.5.1 Another isolated pit (013) was encountered in this trench. It measured 0.72 m in length by 0.52 m in width, but again it did not present any datable material culture.

7.6 Trench 35, 36 and 38

- 7.6.1 Topographically located at the deeper end of all these three trenches (plate 6), a deposit comprising moderate dark black/grey silt clay with frequent mixed coal, angular stones and possible ceramic/drain fragments (016) was identified. Roughly orientated east/west, it measured 2 m in width and it was more than 0.25 m thick (plate 7).



Plate 6: Location of possible track in trench 35.



Plate 7: Trench 35 showing a detail shot of (016).

7.7 Trench 69

- 7.7.1 A sub-oval feature (015), measuring at least 1 m in length (it was not fully exposed) by 0.7 m in width and 0.21 m deep was recorded at the centre of this trench. It was filled by firm dark grey to black clay silt with redeposited clay subsoil chunks (014); no datable finds were retrieved from it.



Plate 8: Pre-ex shot of feature [015] from SW.



Plate 9: Post-ex shot of feature 006 from SW.

7.8 Trench 73

- 7.8.1 A linear 'L' shaped cut feature (006) was identified in this trench with its longest side orientated NE-SW. It measured 0.40 m in width and 0.06 m at its deepest point and it was approximately 4.5 m in length before turning right angle for 1.7 m. Filled by mid grey brown mottled with black / orange brown sandy silt and occasional gravel (005); its section was roughly V-shaped. No finds were retrieved from it.

Discussion

- 8.1 The evaluation trenching identified five pits (009, 010, 013, 015 and 020), a hand dug ditch (006) and a possible track (016) probably relating to the use of the site during the recent coal mining of the area. The small finds recovered within pit [010] in trench 15 and from the unstratified deposit in trench 73 suggest a modern date.
- 8.2 When compared to the Ordnance Survey First Edition map of 1856, it seems that the track identified between trenches 35, 36 and 38 could be the remains of the 'tram roads' used to transport the coal.
- 8.3 The lack of datable finds in the isolated ditch and most of the excavated pits hinders the interpretation of their date as well as their character and function. However, their appearance does suggest that they might also be related to the coal mining works.



Plate 10: Location of possible track in trench 36.

Conclusions

- 9.1 The evaluation work has proved that although archaeologically deposits or features exist within the development area, they are quite recent in date and probably associated to the coal mining work. In consequence, it is recommended that no further archaeological work is required for the phase 1 area.
- 9.2 GUARD would stress that these recommendations are intended for guidance only. Final decisions on the nature and extent of any future archaeological work rest with the planning authority.
- 9.3 A summary of the project results will be submitted to Discovery and Excavation in Scotland. A copy of this is included in Appendix G. The archive for the project, including a copy of the report, will be submitted to the National Monuments Records for Scotland within six months.
- 9.4 The online OASIS form at <http://ads.ahds.ac.uk/project/oasis/> (OASIS Reference: guardarc1-222873) will be completed within 3 months. Once the Data Structure Report has become a public document by submission to or incorporation into the SMR, the Fife Council Archaeologist will validate the OASIS form thus placing the information into the public domain on the OASIS website.

Acknowledgements

- 10.1 GUARD would like to thank Tommy Devlin from I & H Brown Ltd and Albert Muckley from Ironside Farrar for their assistance. Plant and drivers were supplied by I & H Brown Ltd. The evaluation was directed by Iraia Arabaolaza and Kenneth Green. A survey of trench locations was conducted by Diarmuid O'Connor. The illustrations were produced by Gillian McSwan. Technical support was from Aileen Maule. The report was desk top published by Gillian McSwan. The project was managed for GUARD Archaeology by Bob Will and Ronan Toolis.

**Dunfermline North, Fife
Archaeological Evaluation
Data Structure Report**

Section 2: Appendices



www.guard-archaeology.co.uk

Appendices

Appendix A: Trench Descriptions

Tr No	Length (m)	Width (m)	Depth (m)	Topsoil/Overburden	Intermediate	Subsoil	Details
001	50	2	0.75	(001). 0.53 m thick. Loose, dark greyish brown sandy clay with some bricks, sandstone and cobbles.	-	(002). Moderate compaction. Grey with mottled yellow and orange. Sandy clay with occasional coal.	Field drains.
002	50	2	-	(001). 0.31 – 0.62 m. Loose. Dark greyish brown sandy clay	-	(002). Same as TR001	Deeper area towards middle of trench. Field drains.
003	50	2	0.35 – 0.50	(001) 0.30 m. Same as Tr001	-	Same as Tr001	Field drains.
004	50	2	0.4	0.30 m. Same as TR001	-	Same as Tr001	Trial trench
005	50	2	0.35	0.30 m. Inclusions of bricks, pipe fragments towards SE end. Same as TR001	-	Same as Tr001	Field drains.
006	50	2	0.5	0.35 – 0.40 m. Bricks and modern plastic bags are inclusions. Same as TR001	-	Same as Tr001	No archaeology
007	50	2	0.35	0.30 m. Same as TR001	-	Same as TR001, plus some coal. Moderate compaction, dark black with coal inclusions.	No archaeology
008	50	2	0.5	0.35 m thick. Same as TR001	-	Same as Tr001	No archaeology
009	50	2	0.4	0.30 m thick. Same as TR001	-	Same as TR001.	No archaeology
010	50	2	-	Same as TR001	-	Same as TR001. Slightly more orange in colour, grey/orange.	No archaeology
011	50	2	0.5	0.30 – 0.50 m thick. Same as TR001	-	Same as Tr001	Feature (019)/[020], a subcircular pit.
012	50	2	0.35	0.30 m thick. Same as TR001	-	Same as TR001, a bit more orange	No archaeology, field drains and furrows.
013	50	2	0.4	0.30 m thick. Same as TR001	-	Same as Tr001	No archaeology. Contained trial trench, furrows, field drain, plough marks
014	50	2	0.40 – 0.60	0.35 – 0.45 m thick. Same as Tr001	-	Same as TR001.	No archaeology. Contained field drain.
015	50	2	0.4	0.35 m thick. Same as TR001	-	Same as TR001.	Two pits, (007)/[009] and (008)/[010].
016	50	2	0.4	0.30 m thick. Same as TR001	-	Same as TR001.	Contained furrows, field drains and plough marks.
017	25	2	0.35	0.20 m thick. Same as TR001	-	Same as Tr001	Field drains.

Tr No	Length (m)	Width (m)	Depth (m)	Topsoil/Overburden	Intermediate	Subsoil	Details
018	50	2	0.5	0.30 m thick. Same as TR001	-	Same as TR001.	Plough marks
019	50	2	0.35 – 0.60	0.30 – 0.35 m thick. Same as TR001	-	Same as TR001.	Field drains and furrows.
020	50	2	0.35 – 0.55	0.30 m thick. Same as TR001	-	Same as TR001.	Field drains.
021	50	2	0.4	0.25 – 0.35 m thick. Inclusions of modern ceramic / china. Same as TR001.	-	Same as TR001.	Stone field drains, field drains.
022	50	2	0.35	0.25 m thick, same as TR001	-	Same as TR001.	Field drains.
023	35	2	0.35 – 0.65	0.40 m thick. Same as TR001.	-	Same as TR001.	Field drains, plough marks.
024	50	2	0.35	0.30 m thick. Inclusions of modern china. Same as TR001	-	Same as TR001.	Field drains, plough marks.
025	50	2	0.45	0.35 m thick. Same as TR001. Inclusions of modern glass and china.	-	Same as TR001.	Field drains and furrows.
026	50	2	0.45	0.30 m thick. Same as TR001	-	Same as TR001.	Field drains, furrows and plough marks.
027	50	2	0.4	0.30 m thick. Same as TR001	-	Same as TR001.	Field drains and furrows.
028	50	2	0.4	0.35 m thick. Same as TR001	-	Same as TR001.	Field drains.
029	50	2	0.45	0.35 m thick. Inclusions of modern china. Same as TR001.	-	Same as TR001 although stonier than usual.	Field drains.
030	50	2	0.4	0.30 m thick. Same as TR001.	-	Same as TR001.	Feature (012)/ [013], subcircular pit. Also contained field drains.
031	50	2	0.45	0.35 m thick. Same as Tr001. Inclusions of modern glass and china.	-	Same as Tr001	Field drains and furrows.
032	50	2	0.4	0.30 m thick. Same as TR001	-	Same as TR001.	Field drains and plough marks.
033	50	2	0.6	0.50 m thick. Same as TR001.	-	Same as TR001.	Contained possible test pit and field drains.
034	50	2	0.40 – 0.60	0.50 m thick.	-	Same as TR001, a bit more grey at NW end, later more orange in colour.	Field drains and plough marks.
035	50	2	0.4	0.30 m thick. Same as TR001.	(016). More than 0.25m thick. Moderate compaction, dark black / grey colour silty clay containing frequent mixed coal, angular stones, possible ceramic fragments. Located at the deepest end at centre of trench, possibly relating to the track. Approximately 2m wide. Length and thickness unknown.	Same as TR001.	Possible track.

Tr No	Length (m)	Width (m)	Depth (m)	Topsoil/Overburden	Intermediate	Subsoil	Details
036	50	2	0.40 – 0.60	Same as TR001	Same as in TR035. Located at the deepest point in the topography. Possible track.	Same as TR001.	Possible track. Field drains.
037	50	2	0.30 – 0.35	0.25 – 0.30 m thick. Same as TR001.		Same as TR001.	Plough marks.
038	50	2	0.30 – 0.60	0.25 – 0.40 m thick. Same as TR001.	Same as in TR035. Located at the deepest point in the topography. Possible track.	Same as TR001.	Possible track.
039	50	2	0.55 – 0.65	0.45 – 0.50 m thick with modern china inclusions. Same as TR001.	-	Same as TR001.	Plough marks, stone field drain.
040	50	2	0.4	0.30 m thick. Same as TR001	-	Same as TR001.	Furrow.
041	50	2	0.55	0.35 m thick. Same as TR001	(017). Moderate compaction. Dark black grey silty clay with pebble sized angular stones, ceramic and drain fragments. Possibly part of mine shaft.	Same as TR001. Some areas slightly light red brown in colour.	Field drain.
042	50	2	0.4	0.30 m thick. Same as TR001	-	Same as TR001.	Field drain and plough marks.
043		2	0.4	0.30 m thick. Same as TR001	-	Moderate compaction, light grey brown silty clay.	-
044	50	2	0.35	0.25 m thick. Same as TR001	-	Same as TR001.	Plough marks, furrow.
045	50	2	0.4	0.30 m thick. Same as TR001	-	Same as TR001. Coal at NE end of trench.	No archaeology
046	50	2	0.35	0.30 m thick. Same as TR001.	-	Same as TR001.	Field drains.
047	50	2	0.4	0.30 m thick. Same as TR001.	-	Same as TR001.	Field drains.
048	50	2	0.45 – 0.60	0.35 – 0.50 m thick. Same as TR001.	-	Same as TR001 + coal.	No archaeology.
049	50	2	0.4	0.30 m thick. Same as TR001.	-	Same as TR001 + coal.	Field drains.
050	50	2	0.4	0.30 m. Same as TR001	-	Same as TR001.	Field drains.
051	50	2	0.4	0.30 m thick. Same as TR001	-	Same as TR001 + coal.	Field drains.
052	50	2	0.65	0.35 m thick. Same as TR001	0.10 m thick, moderate compaction, black coal.	Same as TR001.	Stone field drains.
053	50	2	0.35	0.25 m thick, same as TR001.		Same as TR001.	Furrows
054	50	2	0.6	0.50 m thick. Same as TR001.	0.10 m thick. Angular stones. Same as TR052.	Same as TR001 + coal.	-
055	50	2	0.45	0.30 m thick. Same as TR001	0.10 m thick. Same as TR52. Coal layer.	Same as TR001.	No archaeology
056	50	2	0.30 – 0.85	0.35 m thick. Same as TR001.	(003). 0.35 m thick, moderate compaction, greyish brown silty clay. Possible hillwash?	Same as TR001.	Field drains.

Tr No	Length (m)	Width (m)	Depth (m)	Topsoil/Overburden	Intermediate	Subsoil	Details
057	50	2	0.5	0.40 m thick. Same as TR001.	-	Same as TR001.	No archaeology
058	20	2	0.9	0.30 – 0.80 m thick. Firm, dark grey black slightly clay silt with occasional stones. Topsoil.	-	Very firm mid grey brown/blue brown clay with stones. Subsoil – more blue to SE at deeper end.	No archaeology
059	50	2	0.3	0.20 – 0.30 m thick. Firm dark grey brown/black slightly clay silt with occasional small stones. Topsoil (001).	-	(002). Firm blue grey clay with occasional stones. Subsoil.	N-S oriented field drain. Drainage ditch.
060	20	2	0.3	(001) 0.30 m thick. Firm dark grey brown / black clay silt with stones. Topsoil.	-	(002). Firm mid blue clay with stones. Subsoil.	No archaeology
061	50	2	0.5	(001) 0.45 m thick, firm mid grey brown / black clay silt with occasional stones. Topsoil.	-	(002). Very firm mid grey brown clay with stones. Subsoil.	No archaeology
062	50	2	0.5	(001) 0.40 m thick moderate to firm dark grey black slight clay silt with occasional stones. Topsoil.	(004) 0.10 m thick moderate compaction, black silty coal / shale. Layer of coal debris from nearby shaft.	(002). Firm mid grey brown clay with occasional stones	No archaeology.
063	50	2	0.3	0.30 m thick moderate to firm compaction dark grey brown / black slightly clay silt with occasional stones. Topsoil (001).	-	(002) very firm mid blue grey clay with stones. Subsoil.	Deposit relating to mining operations at NE end.
064	50	2	-	(001) topsoil.	-	(002) firm mid grey brown clay with occasional stones. Subsoil.	No archaeology
065	50	2	0.3	(001) topsoil. 0.30 m thick, firm dark grey brown silt with occasional stones.	-	(002) subsoil. Firm mid grey brown clay with occasional stones.	Light traces of plough scars.
066	50	2	0.40 – 0.50	(001) Topsoil. 0.40 m thick, firm to moderate mid grey brown silt with occasional stones.	-	(002) subsoil. Firm mid blue grey brown clay stones.	No archaeology. 3 field drains, N-S. Light plough scarring.
067	50	2	0.20 – 0.25	(001) topsoil. 0.20 m thick moderate / firm mid grey brown silt with occasional stones and ceramic inclusions.	-	(002). Firm mid / light blue grey brown clay with stones. Subsoil.	N-S field drain and plough scars. No archaeology.
068	50	2	0.3	(001) topsoil. 0.30 m thick, moderate to firm mid / dark grey brown silt with stones.	-	(002) subsoil. Very firm mid blue grey clay with stones.	No archaeology
069	50	2	0.40 – 0.50	(001) topsoil. 0.40 m thick. Moderate to firm, mid to dark grey brown slightly clay silt with occasional stones.	-	(002) subsoil. Firm, mid / dark blue grey clay with stones.	Pit 014/015 probably relates to mining activity in the area. Contained evidence for plough scars.

Tr No	Length (m)	Width (m)	Depth (m)	Topsoil/Overburden	Intermediate	Subsoil	Details
070	50	2	0.3	(001) topsoil. 0.30 m thick, moderate to firm compaction, mid to dark grey brown slightly clay silt with occasional stones.	-	(002) subsoil. Firm mid blue grey clay with stones.	N-S field drain, small coal/shale deposit at the NE end. No archaeology.
071	50	2	-	(001) topsoil. Moderate to firm mid to dark grey brown slightly clay silt with occasional stones.	-	(002) subsoil. Firm mid/dark blue grey clay with stones.	E-W field drain. No archaeology.
072	50	2	0.35	(001) Topsoil. 0.30 m thick. Moderate to firm compaction, mid / dark grey brown clay silt with occasional stones.	-	(002) subsoil. Firm mid grey/blue brown clay with stones.	N-S field drain.
073	50	2	0.30 – 0.50	(001) topsoil. 0.20 m thick, moderate compaction, dark grey brown silt with occasional stones.	(003) Hillwash. 0.10 to 0.20 m thick, moderate compaction, mid red brown sandy silt.	(002) subsoil. Firm, mid blue grey clay with stones.	Shallow ditch 004/005. N-S field drains.
074	50	2	-	(001) topsoil. Firm, wet. Dark grey brown/black slightly clay silt with occasional stones. Very wet / waterlogged at SE end.	-	(002) subsoil. Firm mid blue grey to brown clay with stones.	N-S field drains and plough scars.
075	50	2	0.30 – 0.60	(001) topsoil. 0.40 m thick. Firm, dark grey brown / black clay silt with occasional stones.	(003) hillwash. 0.20 m thick, firm mid red grey brown silt. At NE end of trench.	(002) subsoil. Firm, mid blue grey clay with occasional stones.	No archaeology
076	50	2	0.3	(001) Topsoil. 0.30 m thick, moderate to firm mid / dark grey brown silt with stones.	-	(002) subsoil. Firm mid grey brown clay with occasional stones.	N-S field drain and plough scars. No archaeology.
077	50	2	0.4	(001) topsoil. 0.40 m thick, firm dark grey brown silt with occasional stones.	-	(002) subsoil. Firm mid grey brown clay with stones.	No archaeology
078	50	2	0.5	(001) topsoil. 0.40 to 0.50 m thick. Firm, dark grey brown silt with occasional stones.	-	(002) subsoil. Firm, mid grey brown clay with stones.	N-S field drains.
079	50	2	0.35	0.25 m thick. Same as TR001.	-	Same as TR001.	Plough marks, furrows. No archaeology.
080	20	2	0.45	0.35 m thick. Same as TR001.	-	Same as TR001.	No archaeology
081	50	2	0.35	(001) topsoil. 0.30 m thick, firm mid grey brown clay silt with occasional stones.	-	(002) subsoil. Firm mid grey brown clay with stones.	No archaeology.

Appendix B: List of Contexts

Context No.	Area	Description	Interpretation
001	-	Firm, mid grey brown to dark grey black slightly clay silt with occasional stones and fragments of modern glass and ceramic. Measures approximately 0.30 to 0.50 m in thickness. Machine stripped.	Topsoil across site
002	-	Very firm mid grey brown to mid grey blue clay with stones. Not fully excavated, revealed in machine strip.	Subsoil across site
003	TR075	Firm mid red grey brown silt. 0.20m thick. Machine stripped.	Hillwash / intermediate deposit found in TR075 to the NE end particularly.
004	TR062	Moderate compaction, black coal / shale. 0.10 m thick. Machine stripped.	Deposit of coal/shale from nearby mineshaft. Not sampled.
005	TR073	Friable mid grey brown mottled with black / orange brown. Sandy silt, becomes more sandy to SE end. Contains occasional gravel. Approx 4.5 m NW-SE before right angle turn. 1.7 m SW-NE. 0.40 m wide and 0.06m at deepest point. Hand excavated and affected by bioturbation.	Silty fill at base of what appears to be a hand cut ditch. Possibly built up over time, filled with organic and silty material giving mottled appearance.
006	TR073	Linear, right angle shaped cut with one corner. Measures the same as (005). Sharp top break of slope to N and E sides, but to S and W it is more gradual. The sides are steep on the N and E sides but more gentle on the S and W. The bottom break of slope is gradual and the base is uneven, making roughly a V-shape. Oriented NW-SE and NE-SW.	Cut of potential hand cut drainage ditch. See (005).
007	TR015	Moderately compact mid brown friable silty sand containing occasional fine roots and occasional medium angular stones. Measures 1.05 m in length by 0.65 m (extending into trench side) and 0.38 m in depth.	Fill of possible pit [009] – within the fill there is a slight mix with the natural.
008	TR015	Moderately compact mid brown / grey coloured silt sand with roots and occasional small and medium stones. Measures 1.12 m by 0.70 m and 0.22 m in thickness.	Fill of possible pit [010] containing modern glass.
009	TR015	Semi oval in plan though not fully revealed. Rounded corners, moderately steep sides with a rounded base. Oriented NNW-SSE. Filled by (007).	Cut for pit with fill (007)
010	TR015	Semi oval in plan with rounded corners. Measures 1.12 m in length by 0.70m wide and max depth 0.22 m. The south eastern end has a more gentle slope and sides while the NW end has vertical sides and deeper base. Orientation NW-SE. Filled by (008)	Cut for pit with fill (008)
011	TR37	Feature void	-
012	TR30	Firm mid grey silty clay with patches of redeposited natural and occasional small pebbles. It measures 0.72 m by 0.52 m. Truncated by machine trenching.	Fill of possible pit [013]
013	TR30	-	Cut for pit with fill (012)
014	TR069	Firm dark grey to black clay silt with clay chunks. 1.00 m revealed in trench with a width of 0.70 m and depth 0.21m.	Fill of pit containing what appeared to be debris from mining activity. Black and shale like fragments. Very intermixed on S side with clay – possible disturbance or result of backfilling. No material culture. Cut 015.
015	TR069	Sub oval – irregular shape in plan. 1.00 m in length revealed in trench. 0.70 m in width and depth of 0.21 m. Sharp break of slope at the top and fairly steep sides N-S but more gentle sides to W. Base break of slope is sharp and the base is uneven / undulating. Oriented SW-NE.	Cut for pit with fill (014)
016	TR035/36/38	Moderate dark black/grey silt clay with frequent mixed coal, angular stones, possible ceramic/drain fragments. More than 0.25 m thick.	Located at deeper end at centre of trench, maybe relates to track. Approx 2 m wide. Length and thickness unknown.
017	Tr041	Moderate dark black grey silty clay with pebble sized angular stones.	Possibly part of mineshaft backfill? Located at SE end of trench close to mineshaft and bing. Not further investigated.

Context No.	Area	Description	Interpretation
018	TR052/54/55	Moderate compaction, black with coal fragments. 0.19 m thick.	Coal deposit.
019	TR011	Fill of possible pit. Dark grey / brown colour, moderately compacted. Contained no material culture.	Fill of possible pit.
020	TR011	Cut of pit. Irregular, varying from moderate to steep slopes. It is disturbed on the right hand side, likely by some sort of animal burrow.	Cut of pit with fill (019).

Appendix C: List of Finds

Find No.	Area	Context No.	No. of Pieces	Material	Description
1	TR015	8	2	Glass	1 frag + 1 base
2	TR073	Unstrat	2	Brick	2 old looking bricks

Appendix D: List of Samples

Sample No.	Area	Context No.	Size	Reason for Sampling				Application/Comments
				Pot	Bone	Lithics	Botanics	
1	TR11	019	1xL					Fill of pit 020
2	TR15	007	1xL					Fill of pit
3	TR15	008	1xL					Fill of pit
4	TR30	012	1xL					Fill of 013
5	TR73	005	1xL					Fill of ditch 006
6	TR69	014	1xL					Fill of pit 015

Appendix E: List of Drawings

Drawing No.	Area	Sheet No.	Subject	Scale
1	TR11	1	Plan of possible pit	1:20
2	TR11	1	NW facing section of possible pit	1:10
3	TR15	1	SW facing section of possible pit	1:10
4	TR15	1	Plan of possible pit	1:20
5	TR15	1	SW facing section of possible pit	1:10
6	TR15	1	Plan of possible pit	1:20
7	TR30	1	Plan of possible pit	1:20
8	TR73	1	NE facing section	1:10
9	TR73	1	NW facing section	1:10
10	TR73	2	TR73 post ex plan of ditch 005/006	1:20
11	TR69	2	SW facing section of pit	1:10
12	TR69	2	Post ex plan of pit	1:20

Appendix F: List of Photographs

File 1

Frame	Area	Context No.	Subject	Taken from
1	-	-	I. D. Shot	-
2	TR001	-	I. D. Shot	-
3	TR001	-	SE Facing Section	SE
4	TR001	-	Post ex	SW
5	TR001	-	Post ex	NE
6	TR002	-	I. D. Shot	-
7	TR002	-	SE Facing Section	SE
8	TR002	-	Post ex	SW
9	TR002	-	Post ex	NE
10	TR003	-	I. D. Shot	-

Frame	Area	Context No.	Subject	Taken from
11	TR003	-	SE Facing Section	SE
12	TR003	-	Post ex	SW
13	TR003	-	Post ex	NE
14	TR004	-	I. D. Shot	-
15	TR004	-	NE facing section	NE
16	TR004	-	Post ex	NW
17	TR004	-	Post ex	SE
18	TR005	-	I. D. Shot	-
19	TR005	-	SW Facing Section	SW
20	TR005	-	Post ex	NW
21	TR005	-	Post ex	SE
22	TR006	-	I. D. Shot	-
23	TR006	-	Post ex	NW
24	TR006	-	SW Facing Section	SW
25	TR006	-	Post ex	SE
26	TR007	-	I. D. Shot	-
27	TR007	-	Post ex	SW
28	TR007	-	NW Facing Section	NW
29	TR007	-	Post ex	NE
30	TR008	-	I. D. Shot	-
31	TR008	-	NW Facing Section	NW
32	TR008	-	Post ex	SW
33	TR008	-	Post ex	NE
34	TR009	-	I. D. Shot	-
35	TR009	-	Post ex	SW
36	TR009	-	NW Facing Section	NW
37	TR009	-	Post ex	NE
38	TR010	-	I. D. Shot	-
39	TR010	-	Post ex	SW
40	TR010	-	NW Facing Section	NW
41	TR010	-	Post ex	NE
42	TR011	-	I. D. Shot	-
43	TR011	-	Post ex	SE
44	TR011	-	SW Facing Section	SW
45	TR011	-	Post ex	NW
46	TR012	-	I. D. Shot	-
47	TR012	-	Post ex	SE
48	TR012	-	SW Facing Section	SW
49	TR012	-	Post ex	NW
50	TR013	-	I. D. Shot	-
51	TR013	-	Post ex	NW
52	TR013	-	SW Facing Section	SW
53	TR013	-	Post ex	SE
54	TR014	-	I. D. Shot	-
55	TR014	-	NW Facing Section	NW
56	TR014	-	Post ex	NE
57	TR014	-	Post ex	SW
58	TR015	-	I. D. Shot	-
59	TR015	-	Post ex	NE
60	TR015	-	NE facing section	NW
61	TR015	-	Post ex	SE
62	TR016	-	I. D. Shot	-
63	TR016	-	Post ex	NE
64	TR016	-	NE facing section	NW
65	TR016	-	Post ex	SE

Frame	Area	Context No.	Subject	Taken from
66	TR017	-	I. D. Shot	-
67	TR017	-	NE facing section	NE
68	TR017	-	Post ex	SE
69	TR017	-	Post ex	NW
70	TR018	-	I. D. Shot	-
71	TR018	-	W Facing Section	W
72	TR018	-	Post ex	N
73	TR018	-	Post ex	S
74	TR011	019	Pre ex of possible feature	SW

File 3

Frame	Area	Context No.	Subject	Taken from
1	-	-	I. D. Shot	-
2	TR019	-	I. D. Shot	-
3	TR019	-	SE Facing Section	SE
4	TR019	-	Post ex	SW
5	TR019	-	Post ex	NE
6	TR020	-	I. D. Shot	-
7	TR020	-	SE Facing Section	SE
8	TR020	-	Post ex	NE
9	TR020	-	Post ex	SW
10	TR021	-	I. D. Shot	-
11	TR021	-	SE Facing Section	SE
12	TR021	-	Post ex	NE
13	TR021	-	Post ex	SW
14	TR022	-	I. D. Shot	-
15	TR022	-	Section	-
16	TR022	-	Post ex	NW
17	TR022	-	Post ex	SE
18	TR011	004/005	Mid ex shot of possible pit	NW
19	TR011	004/005	Post ex shot of possible pit	NW
20	TR023	-	I. D. Shot	-
21	TR023	-	NE facing section	NE
22	TR023	-	Post ex	NW
23	TR023	-	Post ex	SE
24	TR024	-	I. D. Shot	-
25	TR024	-	NE facing section	NE
26	TR024	-	Post ex	NW
27	TR024	-	Post ex	SE
28	TR025	-	I. D. Shot	-
29	TR025	-	SE Facing Section	SE
30	TR025	-	Post ex	SW
31	TR025	-	Post ex	NE
32	TR026	-	I. D. Shot	-
33	TR026	-	NE facing section	NE
34	TR026	-	Post ex	NW
35	TR026	-	Post ex	SE
36	TR027	-	I. D. Shot	-
37	TR027	-	NW Facing Section	NW
38	TR027	-	Post ex	SW
39	TR027	-	Post ex	NE
40	TR013	006	Pre ex photo of possible feature	SE
41	TR030	-	I. D. Shot	-
42	TR030	-	SE Facing Section	SE

Frame	Area	Context No.	Subject	Taken from
43	TR030	-	Post ex	NE
44	TR030	-	Post ex	SW
45	TR031	-	I. D. Shot	-
46	TR031	-	SE Facing Section	SE
47	TR031	-	Post ex	SW
48	TR031	-	Post ex	NE
49	TR032	-	I. D. Shot	-
50	TR032	-	SE Facing Section	SE
51	TR032	-	Post ex	NE
52	TR032	-	Post ex	SW
53	TR033	-	I. D. Shot	-
54	TR033	-	NE facing section	NE
55	TR033	-	Post ex	NW
56	TR033	-	Post ex	SE
57	TR015	007	Pre ex of possible feature	-
58	TR015	006	Pre ex of possible feature	-
59	TR034	-	I. D. Shot	-
60	TR034	-	Post ex	NW
61	TR034	-	SW Facing Section	SW
62	TR034	-	Post ex	SE
63	TR035	-	I. D. Shot	-
64	TR035	-	SW Facing Section	SW
65	TR035	-	Post ex	NW
66	TR035	-	Post ex showing possible track	SE
67	TR035	-	Post ex	SE
68	TR036	-	I. D. Shot	-
69	TR036	-	SW Facing Section	SW
70	TR036	-	Post ex	NW
71	TR036	-	Post ex	SE
72	TR037	-	I. D. Shot	-
73	TR037	-	SE Facing Section	SE
74	TR037	-	Post ex	SW
75	TR037	-	Post ex	NE
76	TR039	-	I. D. Shot	-
77	TR039	-	SW Facing Section	SW
78	TR039	-	Post ex	SE
79	TR039	-	Post ex	NW
80	TR040	-	I. D. Shot	-
81	TR040	-	NW Facing Section	NW
82	TR040	-	Post ex	SW
83	TR040	-	Post ex	NE
84	TR041	-	I. D. Shot	-
85	TR041	-	NE facing section	NE
86	TR041	-	Post ex	SE
87	TR041	-	Post ex	NW
88	TR042	-	I. D. Shot	-
89	TR042	-	SW Facing Section	SW
90	TR042	-	Post ex	SE
91	TR042	-	Post ex	NW
92	TR043	-	I. D. Shot	-
93	TR043	-	NE facing section	NE
94	TR043	-	Post ex	SW
95	TR043	-	Post ex	NE
96	TR044	-	I. D. Shot	-
97	TR044	-	SW Facing Section	SW

Frame	Area	Context No.	Subject	Taken from
98	TR044	-	Post ex	SE
99	TR044	-	Post ex	NW
100	TR015	007/009	Post ex shot of possible feature	SW
101	TR015	007/009	Mid ex shot of possible feature	SW
102	TR015	008/010	Mid ex shot of possible feature	SW
103	TR015	008/010	Post ex shot of possible feature	SW
104	TR045	-	I. D. Shot	-
105	TR045	-	SE Facing Section	SE
106	TR045	-	Post ex	SW
107	TR045	-	Post ex	NE
108	TR046	-	I. D. Shot	-
109	TR046	-	SW Facing Section	SW
110	TR046	-	Post ex	NW
111	TR046	-	Post ex	SE
112	TR079	-	I. D. Shot	-
113	TR079	-	SE Facing Section	SE
114	TR079	-	Post ex	SW
115	TR079	-	Post ex	NE
116	TR080	-	I. D. Shot	-
117	TR080	-	NW Facing Section	NW
118	TR080	-	Post ex	NE
119	TR080	-	Post ex	SW
120	TR049	-	I. D. Shot	-
121	TR049	-	NE facing section	NE
122	TR049	-	Post ex	SE
123	TR049	-	Post ex	NW
124	TR048	-	I. D. Shot	-
125	TR048	-	SE Facing Section	SE
126	TR048	-	Post ex	SW
127	TR048	-	Post ex	NE
128	TR050	-	I. D. Shot	-
129	TR050	-	SW Facing Section	SW
130	TR050	-	Post ex	SE
131	TR050	-	Post ex	NW
132	TR051	-	I. D. Shot	-
133	TR051	-	SE Facing Section	SE
134	TR051	-	Post ex	SW
135	TR051	-	Post ex	NE
136	TR052	-	I. D. Shot	-
137	TR052	-	SW Facing Section	SW
138	TR052	-	Post ex	SE
139	TR052	-	Post ex	NW
140	TR053	-	I. D. Shot	-
141	TR053	-	SW Facing Section	SW
142	TR053	-	Post ex	SE
143	TR053	-	Post ex	NW
144	TR055	-	I. D. Shot	-
145	TR055	-	SW Facing Section	SW
146	TR055	-	Post ex	SE
147	TR055	-	Post ex	NW
148	TR054	-	I. D. Shot	-
149	TR054	-	SW Facing Section	SW
150	TR054	-	Post ex	SE
151	TR054	-	Post ex	NW
152	TR056	-	I. D. Shot	-

Frame	Area	Context No.	Subject	Taken from
153	TR056	-	NW Facing Section	NW
154	TR056	-	Post ex	SW
155	TR056	-	Post ex	NE
156	TR047	-	I. D. Shot	-
157	TR047	-	SW Facing Section	SW
158	TR047	-	Post ex	SE
159	TR047	-	Post ex	NW
160	TR057	-	I. D. Shot	-
161	TR057	-	NW Facing Section	NW
162	TR057	-	Post ex	SW
163	TR057	-	Post ex	NE

File 4

Frame	Area	Context No.	Subject	Taken from
1	TR058	-	Post ex	NW
2	TR058	-	Post ex	SE
3	TR059	-	Post ex	NW
4	TR059	-	Post ex	SE
5	TR060	-	Post ex	NW
6	TR060	-	Post ex	SE
7	-	-	I. D. Shot	-
8	TR061	-	I. D. Shot	-
9	TR061	-	NW Facing Section	NW
10	TR061	-	Post ex	SW
11	TR062	-	I. D. Shot	-
12	TR062	-	NW Facing Section	NW
13	TR062	-	Post ex	SW
14	TR063	-	I. D. Shot	-
15	TR063	-	NW Facing Section	NW
16	TR063	-	Post ex	SW
17	TR064	-	I. D. Shot	-
18	TR064	-	NW Facing Section	NW
19	TR064	-	Post ex	SW
20	TR037	-	Pre ex of possible feature	-
21	TR030	012/013	Pre ex of possible feature	-
22	TR066	-	I. D. Shot	-
23	TR066	-	NW Facing Section	NW
24	TR066	-	Post ex	SW
25	TR067	-	I. D. Shot	-
26	TR067	-	SW Facing Section	SW
27	TR067	-	Post ex	NW
28	TR068	-	I. D. Shot	-
29	TR068	-	NW Facing Section	NW
30	TR068	-	Post ex	NE
31	TR069	-	I. D. Shot	-
32	TR069	-	SW Facing Section	SW
33	TR069	-	Post ex	SE
34	TR070	-	I. D. Shot	-
35	TR070	-	NW Facing Section	NW
36	TR070	-	Post ex	SW
37	TR071	-	I. D. Shot	-
38	TR071	-	NE facing section	NE
39	TR071	-	Post ex	SE
40	TR072	-	I. D. Shot	-

Frame	Area	Context No.	Subject	Taken from
41	TR072	-	NE facing section	NE
42	TR072	-	Post ex	SE
43	TR073	-	I. D. Shot	-
44	TR073	-	NE facing section	NE
45	TR073	-	Post ex	NW
46	TR073	-	Silty deposit	SW
47	TR073	-	Grey linear	NW
48	TR073	-	Linear ditch	NW
49	TR074	-	I. D. Shot	-
50	TR074	-	NE facing section	NE
51	TR074	-	Post ex	NW
52	TR075	-	I. D. Shot	-
53	TR075	-	NW Facing Section	NW
54	TR075	-	Post ex	SW
55	TR076	-	I. D. Shot	-
56	TR076	-	NE facing section	NE
57	TR076	-	Post ex	SE
58	TR078	-	I. D. Shot	-
59	TR078	-	NW Facing Section	NW
60	TR078	-	Post ex	NE
61	TR077	-	I. D. Shot	-
62	TR077	-	NW Facing Section	NW
63	TR077	-	Post ex	NE
64	TR081	-	I. D. Shot	-
65	TR081	-	NW Facing Section	NW
66	TR081	-	Post ex	NE
67	TR065	-	I. D. Shot	-
68	TR065	-	NW Facing Section	NW
69	TR065	-	Post ex	SW

File 5

Image	Area	Context No.	Subject	Taken from
1	-	-	I. D. Shot	-
2	TR073	005/006	Post ex shot of ditch	SW
3	TR073	005/006	Post ex shot of ditch	SE
4	TR073	005/006	Post ex shot NW end of ditch	SE
5	TR073	005/006	Post ex shot slot at SE end	SW
6	TR069	014/015	Pre ex possible pit	SW

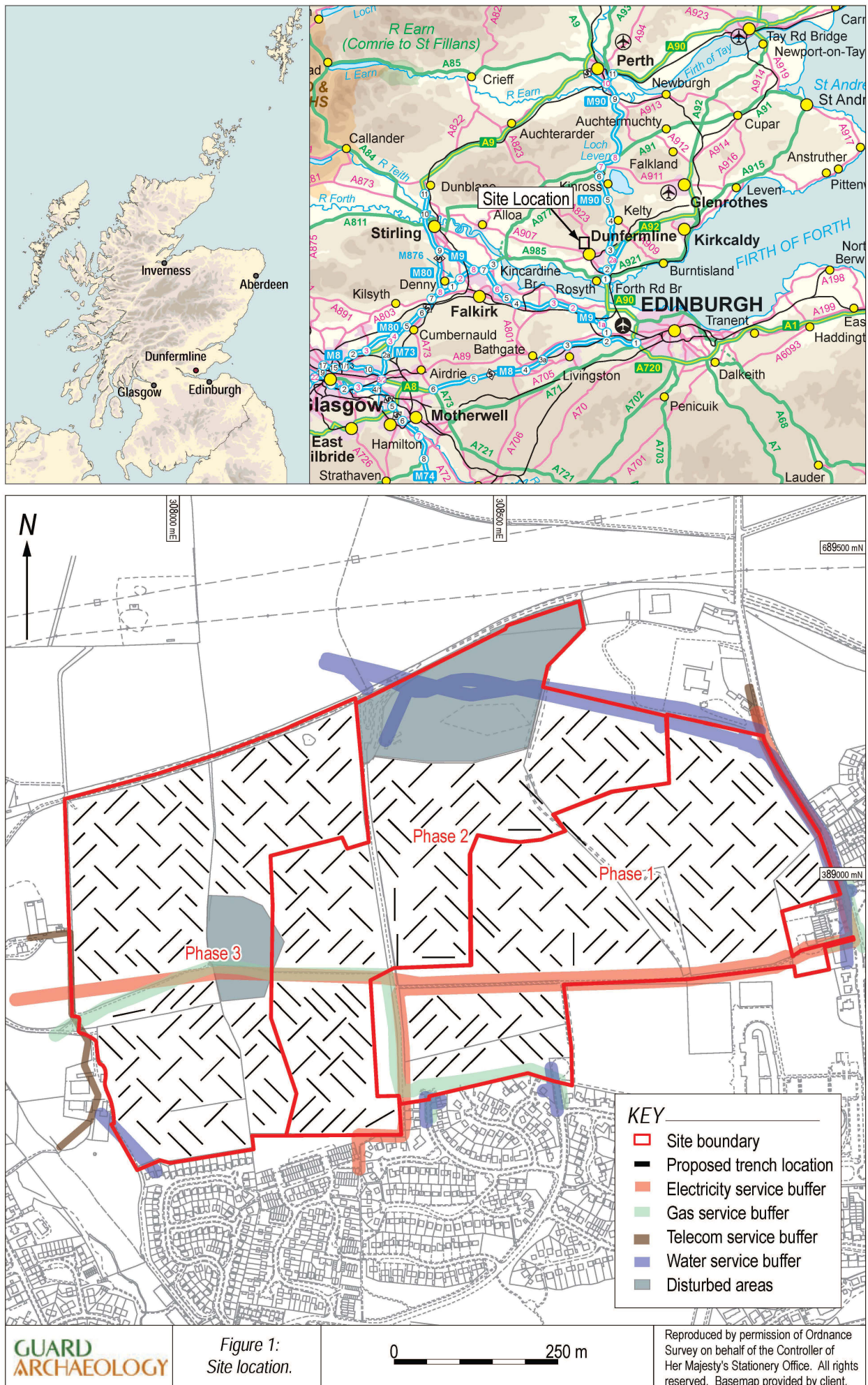
Appendix G: Discovery and Excavation Scotland Entry

LOCAL AUTHORITY:	Fife
PROJECT TITLE/SITE NAME:	Dunfermline North
PROJECT CODE:	4107
PARISH:	Dunfermline
NAME OF CONTRIBUTOR(S):	Iraia Arabaolaza and Kenneth Green
NAME OF ORGANISATION:	GUARD Archaeology
TYPE(S) OF PROJECT:	Evaluation
NMRS NO(S):	N/A
SITE/MONUMENT TYPE(S):	N/A
SIGNIFICANT FINDS:	Pits, hand dug ditch and track
NGR (2 letters, 6 figures)	NT 0807 8855 (centered)
START DATE (this season)	24-08-2015
END DATE (this season)	04-09-2015
PREVIOUS WORK (incl. DES ref.)	None known
MAIN (NARRATIVE) DESCRIPTION: (May include information from other fields)	Due to the recording of a Bronze Age axe find in close proximity, an archaeological evaluation was carried out by GUARD Archaeology Limited of an area proposed for residential development for the Dunfermline North Development. The trial trench evaluation examined 5% of the 15.60 ha phase 1 area. Several archaeological features, possibly related to relatively modern mining works were encountered. No significant archaeological remains were encountered.
PROPOSED FUTURE WORK:	TBC
SPONSOR OR FUNDING BODY:	I & H Brown Ltd
CAPTION(S) FOR ILLUSTRS:	---
ADDRESS OF MAIN CONTRIBUTOR:	GUARD Archaeology Limited, 52 Elderpark Workspace, 100 Elderpark Street, Glasgow, G51 3TR
EMAIL ADDRESS:	bob.will@guard-archaeology.co.uk
ARCHIVE LOCATION (intended/deposited)	Archive to be deposited with NMRS.

Appendix H: Written Scheme of Investigation**DUNFERMLINE SLA (NORTH)**

ARCHAEOLOGICAL WRITTEN SCHEME OF INVESTIGATION

PROJECT 4107



Executive Summary

- 1.1 This Written Scheme of Investigation forms the archaeological method statement for the evaluation of the proposed Dunfermline SLA (North) development area.

Introduction

- 2.1 This Written Scheme of Investigation (WSI) sets out the scope and methodology for the archaeological mitigation works for the Dunfermline SLA (North) development in Fife, to meet planning condition 17. An archaeological evaluation of 5% of the development area, with the exclusion of areas of known disturbance and any buffer zones around services, will be undertaken to establish the presence, extent and nature of any significant archaeological remains. Should significant remains be identified and it is not possible to preserve them *in situ* a further requirement for archaeological works to ensure their preservation through record is likely to be required. Due to the size of the area the development is likely to be undertaken in several construction phases therefore the evaluation may be broken down by construction phase rather than being undertaken as a whole.
- 2.2 This WSI outlines the programme of archaeological works that may be needed to mitigate the effects of the development. It details the methodology to be employed in implementing the Stage 1 archaeological works. The mitigation methodology to be employed during Stage 2 excavation and Stage 3 post excavation analysis and publication, will be specified in *addenda* to this document. These *addenda*, if required, will be submitted for agreement of Douglas Speirs, the Fife Council archaeologist, prior to the commencement of any archaeological work. All phases of work will be funded by the developer as required by the Planning Authority.

Site Location

- 3.1 The development area is located at NGR: NT 0807 8855 (centered), on the northern outskirts of Dunfermline and comprises a number of fields that form an irregularly shaped elongated site. The site is bounded to the east by the A823, with housing to the south and west (Figure 1).

Archaeological Background

- 4.1 A desk-based assessment and walkover survey was undertaken as part of the Environmental Statement for the proposed development and a number archaeological features were identified. Most of these relate to the recent use of the site by the coal industry and cover mine shafts, coal pits and a tram line for moving coal round the site. All of these features within the site have now been demolished or filled in. The only other archaeological reference is to a Bronze Age axe that was found in the immediate area. The discovery of the bronze axe demonstrates the potential for prehistoric remains to survive within the development site.

Aims, Objectives and Scope

- 5.1 The aim of the archaeological evaluation is to identify:
 - as yet unknown archaeological features and deposits within the development area;
 - to ensure that any surviving archaeological remains within the development area are recorded to an appropriate level.
- 5.2 The objectives are therefore to:
 - Conduct an archaeological evaluation of 5% of the development area, by machine-cut trial trench excavation, to establish the presence or absence of any archaeological remains, and their character, date and extent if surviving;

- Submit a report to data structure level for approval to Fife Council Archaeology Unit on completion of the archaeological fieldwork, which includes an outline of the scope of any further archaeological works should any significant archaeology be encountered.

5.3 The scope of the archaeological works will establish:

- that if the archaeological evaluation encounters no significant archaeological remains within the development area, no further archaeological fieldwork will be required.

Evaluation Methodology

- 6.1 The archaeological works will adhere to the standards of the Chartered Institute for Archaeologists, of which GUARD Archaeology Ltd is a Registered Organisation. The programme of archaeological works will involve the evaluation of the proposed development site, excluding areas of known disturbance and any buffer areas around services (gas and water etc). Taking into account these exclusions the total area to be evaluated is 51.08 ha. The work will involve a 5% evaluation of this area which equates to 25,540 m², or 246 trenches each measuring 50 m long by 2 m wide, 18 trenches each 25 m by 2 m and one trench 20 m long by 2 m wide (Figure 1). When applied to the proposed construction phase this is equivalent to: phase 1= 88 trenches, phase 2 = 82 trenches, phase 3 = 95 trenches.
- 6.2 All trenches will be excavated by mechanical excavator, utilizing a c 2 m wide flat-bladed (toothless) ditching bucket under the direct supervision of a GUARD Archaeology Archaeologist, down to the first archaeological horizon or to natural subsoil, whichever is encountered first. The depth of stratigraphy apparent in all trenches will be recorded.
- 6.3 Any archaeological features encountered will be cleaned by hand by the on-site GUARD Archaeology Archaeologist to determine their character and extent. Should negative-cut features be encountered, a representative sample will be 25-50% excavated in order to determine their significance, date and function. All on-site recording, written, drawn and photographic, will be to the standards normally pertaining in archaeological fieldwork and to IfA standards. A full record of excavated features will be made using a single context recording system using pro forma sheets, drawings and photographs. All archaeological features will be photographed and recorded at an appropriate scale. Sections will be drawn at 1:10, and plans at 1:20. All evaluation trenches will be accurately surveyed using a sub-metre GPS and located within the National Grid.
- 6.4 All archaeological finds will be dealt with by the on-site GUARD Archaeologist. Finds and animal bone will be collected as bulk samples by context. Significant small finds will be three dimensionally located prior to collection. All significant finds will be processed to MAP2 type standards and subject to appropriate specialist assessment. If necessary, conservation of finds will be appraised to allow for specialist study.
- 6.5 All excavated feature fills and horizons will be sampled as appropriate, using bulk soil samples, for palaeo-environmental evidence.
- 6.6 A representative section will be recorded denoting depth of topsoil, any stratigraphy present and the nature of the soil. This information will be logged in the day book together with a sketch drawn to scale and a photographic record of deposits.
- 6.7 Should human remains be revealed by the excavation, the local police, the client and Douglas Speirs will be informed immediately. Any human remains will be accurately recorded, but left *in situ*, pending the agreement of the police, the client and Douglas Speirs on an appropriate mitigation strategy.
- 6.8 Should significant archaeological remains be encountered by the evaluation, requiring more than the limited evaluation outlined above, the remains will be largely left *in situ* pending the agreement of the client and Douglas Speirs, the latter acting on behalf of the Planning Authority, on a WSI addenda for an appropriate scope of excavation (Stage 2) and post-excavation analysis & publication (Stage 3).
- 6.9 On completion of the excavation of each evaluation trench, the backfilling of trenches will be undertaken by machine as we proceed, unless archaeological features have been encountered. No

specialist backfilling is proposed, nor will the backfilling of trenches be supervised by the on-site archaeologist.

Report Preparation and Contents

- 7.1 A report detailing the results of the archaeological fieldwork will be submitted to the client within two-four weeks of completion of fieldwork and, subject to client approval, then submitted to Douglas Speirs, the Fife Council Archaeologist. The report will take the form of a Data Structure Report and will contain an analysis of the results of the archaeological evaluation. The report will include a full descriptive text that will characterise the date and extent of any archaeological deposits. It will also include plans at an appropriate scale showing the area subjected to ground-breaking works, evaluation trenches, archaeological features and archiving lists of all finds, samples, field drawings and photographs.
- 7.2 If appropriate, the report will also include an addendum to this WSI for further archaeological fieldwork, should significant archaeology have been encountered.
- 7.3 The report will include the following:
 - executive summary;
 - a site location plan to at least 1:10,000 scale with at least an 8 figure central grid reference;
 - OASIS reference number; unique site code;
 - Planning application number;
 - contractor's details including date work carried out;
 - nature and extent of the proposed development, including developer/client details;
 - description of the site history, location and geology;
 - a site plan to a suitable scale and tied into the national grid so that features can be correctly orientated;
 - discussion of the results of field work;
 - context & feature descriptions;
 - features, number and class of artefacts, spot dating & scientific dating of significant finds presented in tabular format;
 - plans and section drawings of the features drawn at a suitable scale;
 - initial assessment of relevant finds/samples if appropriate;
 - recommendations regarding the need for, and scope of, any further archaeological work such as excavation (Stage 2) and Post-excavation finds analysis, conservation & publication (Stage 3);
 - bibliography
- 7.4 An appropriate number of hard copies and digital pdf copies of the report will be prepared for the client and sent to Douglas Speirs for agreement.
- 7.5 The hard copy report will be presented in an ordered state and bound within a protective cover/sleeve. The report will be page numbered and supplemented with section numbering for ease of reference.

Copyright

- 8.1 Unless otherwise agreed copyright for any report resulting from the archaeological work undertaken as part of the project will be deemed the intellectual property of GUARD Archaeology Ltd.

Publication

- 9.1 A summary of the project results will be submitted to *Discovery and Excavation in Scotland*. In the event of minor archaeological remains being encountered during the archaeological fieldwork, it is proposed that a comprehensive report submitted to *Discovery and Excavation in Scotland*, will form the final publication of the site. A copy of this will be included in the Data Structure Report.

Archive

- 10.1 The archive for the project, including a copy of the report, will be submitted to the National Monuments Records for Scotland within three months of completion of all relevant work.
- 10.2 The online OASIS form at <http://ads.ahds.ac.uk/project/oasis/> will be completed within 3 months of completion of the work. Once the Data Structure Report has become a public document by submission to or incorporation into the SMR, Douglas Speirs will validate the OASIS form thus placing the information into the public domain on the OASIS website.

Finds Disposal

- 11.1 The arrangement for the final disposal of any finds made in connection with the archaeological work, will be deposited in keeping with Scottish legal requirements as set out in the Treasure Trove Code of Practice published by the Scottish Government in December 2008. The laws relating to Treasure Trove and *Bona Vacantia* in Scotland apply to all finds where the original owner cannot be identified. This includes all material recovered during archaeological fieldwork. Accordingly, all assemblages recovered from archaeological fieldwork are claimed automatically by the Crown and must be reported to the Scottish Archaeological Finds Allocation Panel through its secretariat, the Treasure Trove Unit. In the event of the discovery of small finds, a filled-out copy of the form "Declaration of an Archaeological Assemblage from Fieldwork" and two copies of the pertinent Data Structure Report will be submitted to the Panel at the conclusion of the fieldwork. The Panel will then be responsible for recommending to the Queen's and Lord Treasurer's Remembrancer which museum should be allocated the finds. All artefacts will be temporarily stored by GUARD until a decision has been made by the panel.

Personnel and Liaison

- 12.1 The GUARD team will comprise the following qualified and experienced GUARD archaeologists:
- Project Manager: Bob Will
 - Project Director (on-site Archaeologist): TBC
 - Archaeological Assistant: TBC
 - Finds and Environmental Support and Conservation: Aileen Maule
 - Illustrator: Gillian McSwan
 - Quality Assurance: Ronan Toolis
- 12.2 The GUARD Project Manager, Bob Will, will be the point of contact for the archaeological works. A full CV for individuals concerned can be made available on request.

Monitoring

- 13.1 The proposed start date for the archaeological fieldwork is Monday 24 August 2015. Douglas Speirs will be informed of the start date at least one week prior to the commencement of fieldwork. Douglas Speirs and the client will be informed of the site mobile phone number prior to the start date so that monitoring visits can be arranged.

Health & Safety and Insurance

- 14.1 GUARD Archaeology Ltd adheres to the guidelines and standards prescribed for archaeological fieldwork set down in the Chartered Institute for Archaeologists approved Health and Safety in Field Archaeology document. It is standard GUARD policy, prior to any fieldwork project commencing, to conduct a risk assessment and to prepare a project safety plan, the prescriptions of which will be strictly followed for the duration of all archaeological fieldwork. Copies of the resultant project safety plan and of GUARD's Fieldwork Safety Policy Statement may be viewed upon request.
- 14.2 GUARD Archaeology Ltd also possesses all necessary insurance cover, proofs of which may be supplied upon request.

GUARD Archaeology Limited
52 Elderpark Workspace
100 Elderpark Street
Glasgow
G51 3TR

Tel: 0141 445 8800

Fax: 0141 445 3222

email: info@guard-archaeology.co.uk



www.guard-archaeology.co.uk