



**Oak Place, Mayfield  
Data Structure Report  
Project 4348**

## Oak Place, Mayfield Data Structure Report

**On behalf of:** Barratt East Scotland

**NGR:** NT 35515 65184

**Project Number:** 4348

**Report by:** Beth Spence

**Illustrations:** Jennifer Simonson

**Project Manager:** Bob Will

<b>DRAFT</b>  02/02/17	Bob Will	<b>FINAL</b>  10/04/17	John Atkinson
	Project Manager		Managing Director
			

*This document has been prepared in accordance  
with GUARD Archaeology Limited standard operating procedures.*

**GUARD Archaeology Limited**  
52 Elderpark Workspace  
100 Elderpark Street  
Glasgow  
G51 3TR

**Tel: 0141 445 8800**  
**Fax: 0141 445 3222**  
**email: [info@guard-archaeology.co.uk](mailto:info@guard-archaeology.co.uk)**



[www.guard-archaeology.co.uk](http://www.guard-archaeology.co.uk)

## Contents

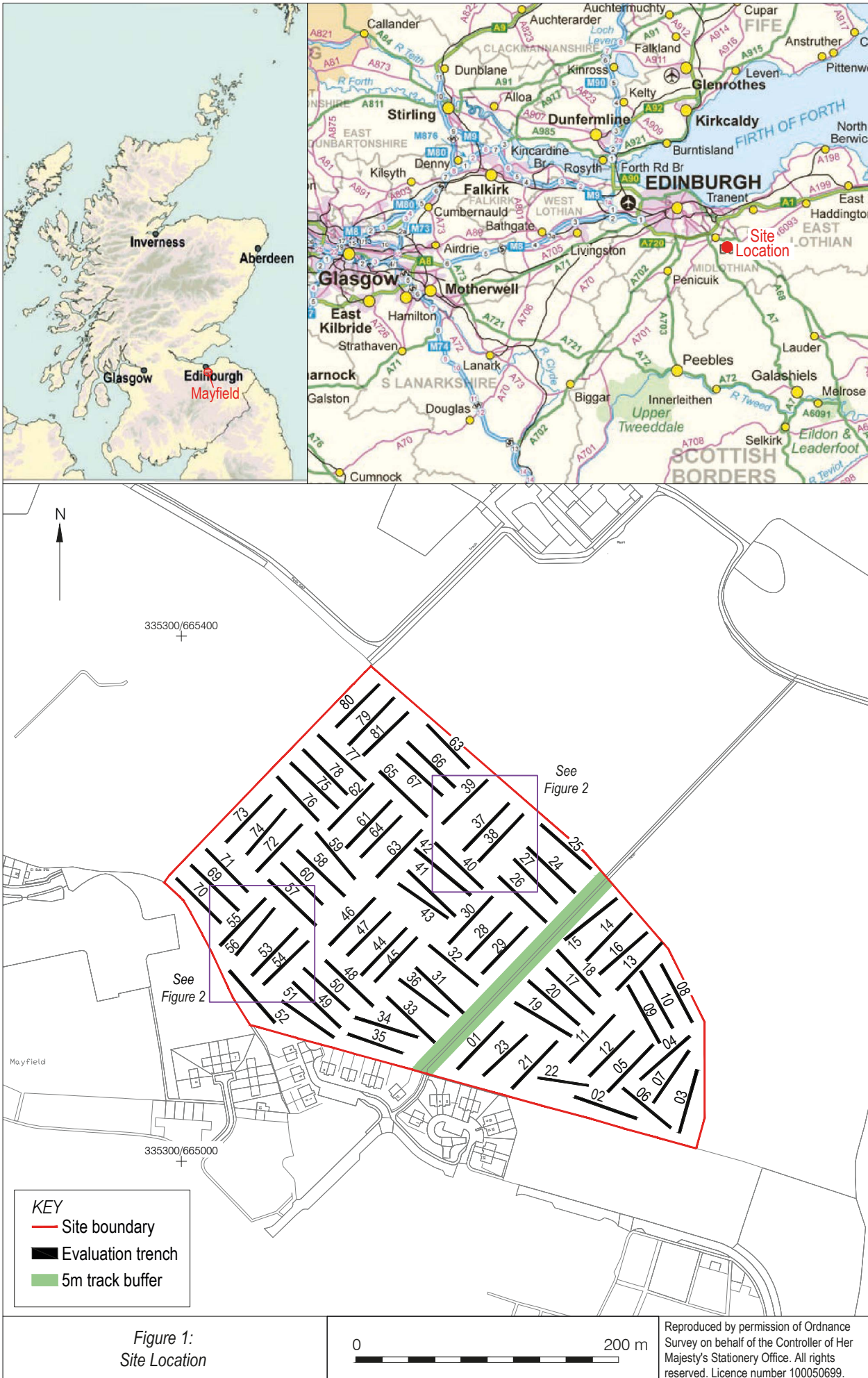
Executive Summary	5
Introduction	5
Site Location, Topography and Geology	5
Archaeological and Historical Background	5
Aims and Objectives	5
Methodology	6
Results	7
Discussion	10
Recommendations	12
Acknowledgements	13
Appendices	15
Appendix A: References	15
Appendix B: List of Trenches	15
Appendix C: List of Contexts:	23
Appendix D: List of Samples	23
Appendix E: List of Finds	24
Appendix F: List of Digital Images	24
Appendix G: Discovery and Excavation in Scotland entry	30
Appendix H: Written Scheme of Investigation	31

## List of Figures

Figure 1: Site location	4
Figure 2: Plan of features	6
Figure 3: North-west facing section of sandstone feature, trench 55	9
Figure 4: Plan of sandstone feature, trench 55	9
Figure 5: Excerpt from Ordnance Survey 1854 Six inch 1st edition, Sheet XIII, showing development area and sandstone features	11
Figure 6: Excerpt from Ordnance Survey 1895 Six inch 2nd edition, Sheet VII.SE, showing development area and sandstone features	12

## List of Plates

Plate 1: Trench 45, from the north east	7
Plate 2: North-east facing section of trench 24	7
Plate 3: East-west orientated furrows in trench 37	8
Plate 4: South-east facing section of furrow in trench 39	8
Plate 5: South-east facing section of furrow 53007, with stone feature 53004 present at south-west	9
Plate 6: Stone feature 55004 in trench 55, from the south-east	9



## Executive Summary

- 1.1 An archaeological evaluation was carried out by GUARD Archaeology Limited, on behalf of Barratt East Scotland on an area proposed for the development of housing. The trial trench evaluation consisted of a series of 81 trenches of 50 m length totalling 10% of the total area proposed for development. Several features of archaeological potential were investigated, however only one feature was deemed on investigation to be of significance. This consisted of a shaped sandstone gully identified within three trenches within the south-west corner of the proposed development area, from which several sherds of ceramic were recovered.

## Introduction

- 2.1 This report sets out the results of an archaeological evaluation undertaken by GUARD Archaeology, on behalf of Midlothian Council on a site proposed for the development of housing, to the north-east of the village of Mayfield. Over the course of the evaluation a total of 8100 m<sup>2</sup> of trenching was undertaken, spread over 81 individual trenches arranged in criss-cross block pattern across the site. Several potential features were investigated across the area; however, the only feature of significance was a sandstone gully located to the south-west of the area. In addition, the remains of a system of furrows was identified on the higher ground towards the north of the area. The work was undertaken between 9<sup>th</sup> and 19<sup>th</sup> January 2017.

## Site Location, Topography and Geology

- 3.1 The site is located on the north-eastern fringes of Mayfield within Midlothian, and is surrounded by housing to the south and fields to the east, west and north. The development area stretches over two large enclosed fields, both of which have recently been cultivated; given the proximity to local housing residents were frequently observed walking in these fields during the course of the works. The fields are separated by a hedgerow running through the centre of the development area.
- 3.2 The ground across the area is undulating, with higher ground present across the north and to the western extents from which there is an extensive outlook across much of Midlothian towards the Pentland hills to the west and Edinburgh and the Forth to the north. The bedrock geology across the area is of Blackhall Limestone and Lower Limestone Formations, while the superficial deposits are Devensian and Diamicton tills (British Geological Society). The site varies between 169 m and 195 m AOD.

## Archaeological and Historical Background

- 4.1 No known archaeological sites lie within the development boundary although a number of possible sites have been identified as cropmarks on aerial photographs in the immediate vicinity. These include a large double ditched circular enclosure that may be a fort at the farm cottages at Lawfield Farm and the remains of possible field boundaries. Given that this land has not previously been developed, there is potential, for the survival of hitherto undiscovered sub-surface archaeological remains.

## Aims and Objectives

- 5.1 The aims and objectives of the archaeological work were to:
- Conduct an archaeological evaluation of 10% of the available evaluation area (8100 m<sup>2</sup>) of the proposed development.
  - Submit a report to data structure level for agreement to the Archaeological Advisors to Midlothian Council on completion of the work.
  - Submit, if excavation or post-excavation works are required, an accompanying project design and costing alongside the data structure report, which will outline arrangements for further excavation or post-excavation works.



## Methodology

- 6.1 Topsoil was stripped using a mechanical excavator, fitted with a flat-bladed ditching bucket, under close archaeological supervision. The topsoil was removed in spits to the surface of the subsoil or the first significant archaeological horizon. The trenches were arranged within the space at alternate angles where possible. All trenches were 50 m in length and 2 m in width.
- 6.2 All areas of the development area were accessible for trenching other than a required buffer around a known water pipe, however this ran adjacent to the dividing hedgerow which was also avoided so did not greatly affect the available area.
- 6.3 Archaeological features encountered were dealt with by the on-site archaeologists. Features were hand cleaned and a photographic and written record was made of each. All feature locations were accurately recorded by means of measured drawing. Possible negative cut features were 50% excavated by hand, while a representative number of linear features including possible furrow features were also investigated to establish depth and character. A 0.5 m slot was hand excavated through the linear sandstone feature. All recording was carried out using pro-forma record sheets, and drawings and photographic records carried out at appropriate scales.
- 6.4 The trenches were evenly laid out across the site to provide comprehensive coverage and were surveyed into the National Grid, enabling all archaeological features to be accurately located.
- 6.5 All elements of the evaluation were undertaken in line with the following policies and guidelines of the Chartered Institute for Archaeologists (CIfA) of which GUARD Archaeology Ltd is a Registered Organisation.
- By-laws: Code of Conduct (2014);
  - Standard and Guidance for archaeological field evaluation (2014).

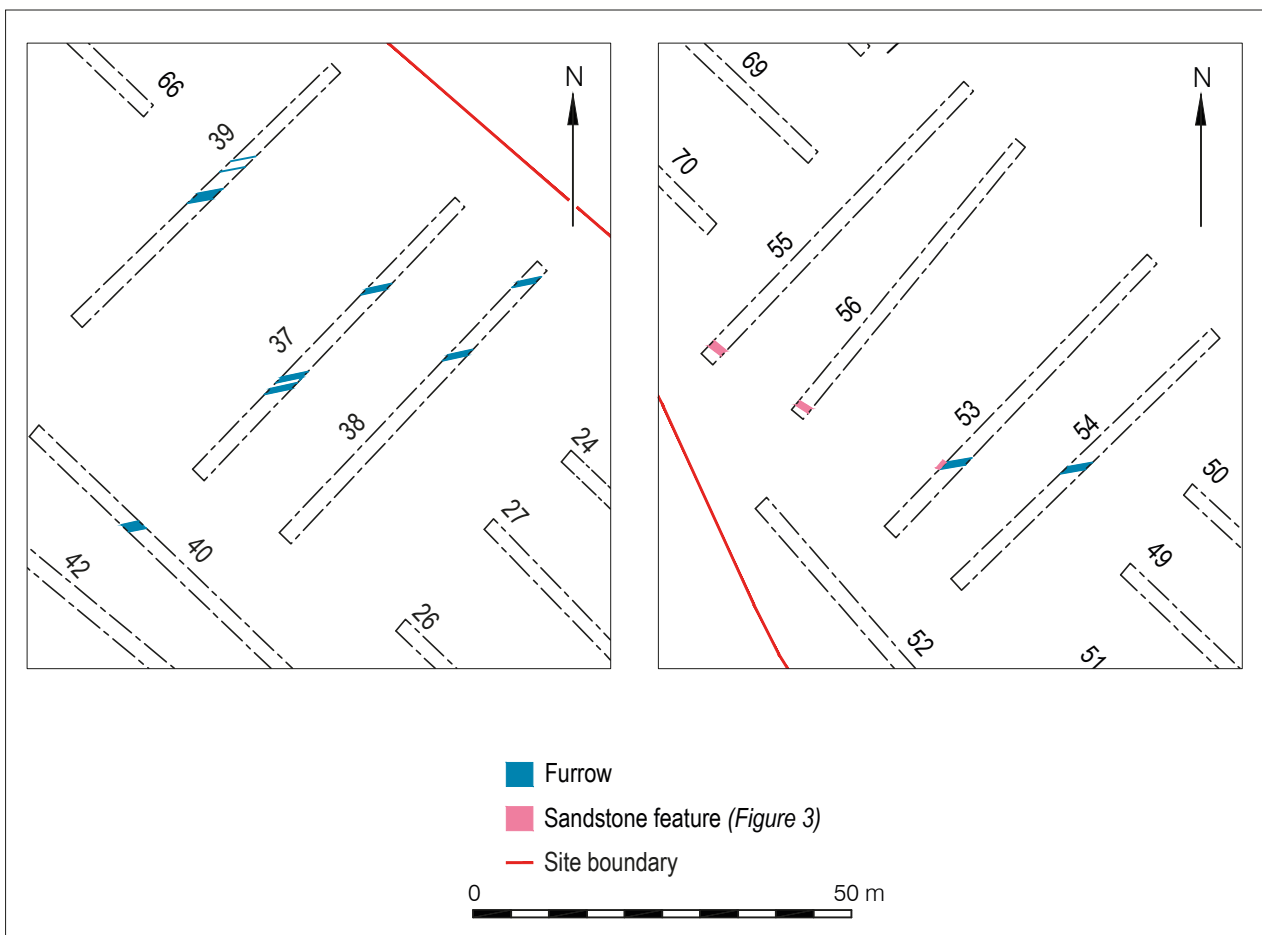


Figure 2: Plan of features.

## Results

- 7.1 Topsoil across the area was a dark brown grey loam which varied between 0.25 m to 0.35 m in depth. Below the topsoil there was frequently observed a mid brown silty intermediate deposit, which was mainly between 0.2 m and 0.3 m in depth, but was up to 0.6 m in depth in some of the downslope trenches or covering natural undulations within the bedrock. Natural subsoil across the area was also variable. Most commonly this was a light to mid brown beige grey sandy or silty clay with frequent sandstone inclusions, however in some areas a denser lighter clay with gravelly silts, again with frequent stone inclusions was uncovered. In several trenches areas of bedrock were located directly below subsoil, and the sporadic presence of this along with the undulating topography presumably accounts for the varied nature of the natural subsoil deposits.



*Plate 1: Trench 45, from the north east.*



*Plate 2: North-east facing section of trench 24.*

- 7.2 Plough scarring of the subsoil was evident in some trenches, particularly towards the north of the development area on the higher ground where the topsoil was not so deep and lay directly above clay subsoil. There was little evidence of modern field drainage in the field to the east of the hedgerow, however fairly extensive systems of both rubble and ceramic drains were present across the western field, along with some recent plastic drains.
- 7.3 Seven potential features were investigated within the eastern field, all of which on excavation appeared to be either modern or amorphous concentrations of material of no evident anthropomorphic origin. Within the western field, the only feature of significance was the sandstone block gully feature investigated across three trenches at the south west, with the addition of the furrow remains to the north. All features investigated are described below by trench.

### 7.4 Trench 2

- 7.4.1 An irregular dark sub-circular feature was identified within trench 2 (2004) this was 0.38 m by 0.24 m and up to 0.05m thick. This was hand cleaned and 50% excavated in order to determine its character and extent. On excavation it was revealed as a shallow irregular cut with a mixed mid and dark brown silt fill which appeared to be a combination of both topsoil material and the lower silt overburden present across this trench. This feature is likely to be the remains of an animal burrow.

### 7.5 Trench 10

- 7.5.1 A possible dark sub circular feature 0.72 m by 0.5 m was identified within trench 10 (10004). However, on hand cleaning this was revealed as an irregular collection of small patches of organic material, rather than a singular feature. This was 50% excavated and revealed to have no cut and a depth of only 20 - 30 mm, with the small patchy nature of the concentrations more likely to be the result of root action than of anthropogenic origin.

## 7.6 Trenches 20, 21 and 23

7.6.1 Irregular black and reddish spreads of material were identified within trenches 20, 21 and 23, all measuring between 1 m and 1.5 m in extent (see 20004). Although deemed likely modern, these were hand cleaned and investigated and revealed to be modern dumped deposits of building materials containing fragments of mortar, concrete, brick and clinker material. The topsoil across this area to the south-west of the eastern field was also visibly more disturbed with bands and inclusions of similar materials, along with more visible modern plastic object fragments and packaging materials. Given the proximity of these trenches to the adjacent housing estate, it seems likely that this corner of the field may have been used as a store or stockpile area during the construction of the houses disturbing the ground here (affecting trenches 1, 19, 20, 21 and 23).

## 7.7 Trenches 37, 38, 39 and 40

7.7.1 A series of possible agricultural furrow were identified across these trenches, which sat on the highest ground within the western field. These were bands of a homogenous light brown sandy silt material which was relatively sterile and looked partially leached as if water affected or washed and were orientated east/west across trenches 37, 38 and 39, with a more ephemeral example present within trench 40 on the same orientation with a similar fill. Eight were identified in total, and all were between 1.2 m and 1.6 m in width. The distance between the furrows varied, with 12 m – 15 m between examples in trenches 37 and 38, but only 2 m between furrows in trenches 37 and 39.

7.7.2 Two of the furrows were investigated in trenches 37 (37003) and 39 (39003). Excavation revealed that the possible furrows had shallow sides with flat bases and were of similar depth of 0.3 m and 0.35 m. There was no evidence of material culture present either within the test slots or on the surface of the features. It seems likely that the features represent the truncated remains of a series of agricultural furrows running downslope from the north.



Plate 3: East-west orientated furrows in trench 37.

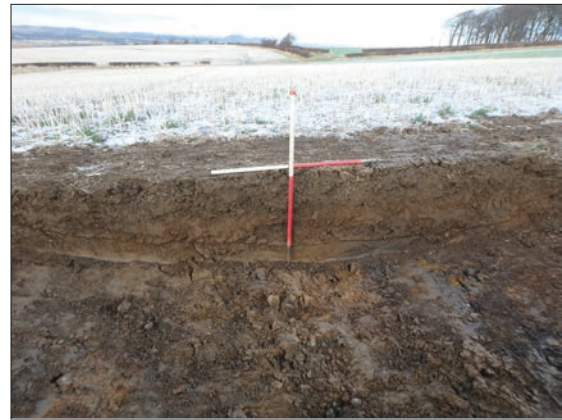


Plate 4: South-east facing section of furrow in trench 39.

## 7.8 Trenches 53, 55 and 56 Sandstone channel

7.8.1 A linear stone built feature was identified stretching across the south-west ends of trenches 55 (55004-55007) and 56 (56004, 56005). On investigation, this was revealed as a line of flat sandstone blocks set within a rubble packed cut orientated north-west/south-east.

7.8.2 The blocks had a shallow narrow channel 10 mm wide and 10mm deep cut into the upper face. There was no evidence of cap stones, so it seems unlikely that this was intended to serve a drainage function in the manner of a small stone lined culvert given the lack of any barrier against external silting. Further cleaning within adjacent trench 53 revealed a further partial continuation of the feature within the trench edge (53004, 53006, 53008). In this section the sandstone blocks had been disturbed possibly either robbed of stone or this may have been the original terminal of the feature. Several sherds of ceramic were recovered within the associated rubble packing (SF 2), possibly of Post-Medieval or slightly later date (Bob Will, pers comm). Four of the sherds appear to be from a section of field drain made from white coarse clay while three sherds are from a jug or similar vessel. The feature containing the sandstone blocks was located



on the edge of a possible furrow or undulation of east-west orientation (53006, 53007) with a similar sterile sandy silt fill to those seen upslope to the north. However the furrows seem to be unrelated given the difference in orientation and appear to predate the stone feature. This stone feature was also noted in trench 54 but not within trenches 55 or 56.



Plate 5: South-east facing section of furrow 53007, with stone feature 53004 present at south-west.



Plate 6: Stone feature 55004 in trench 55, from the south-east.

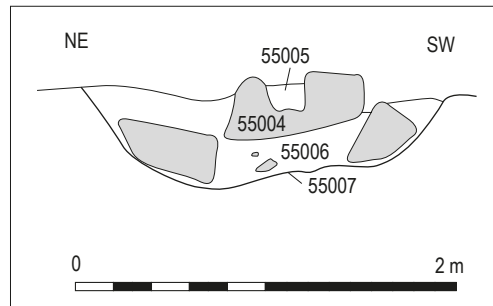


Figure 3: North-west facing section of sandstone feature, trench 55.

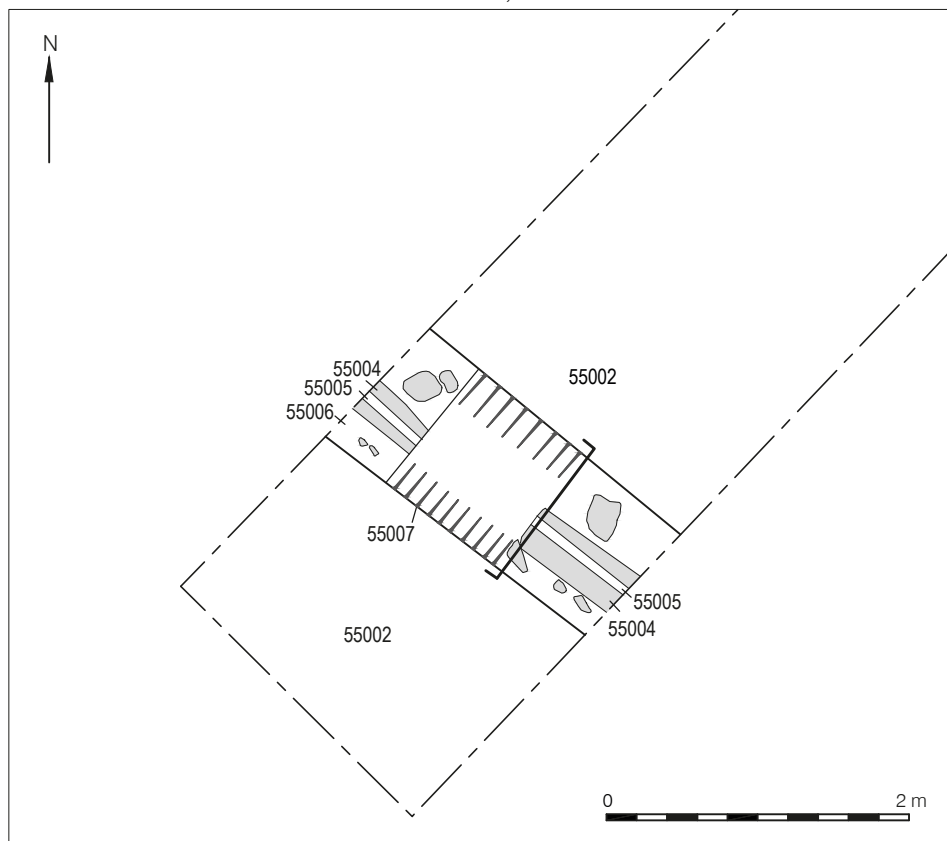
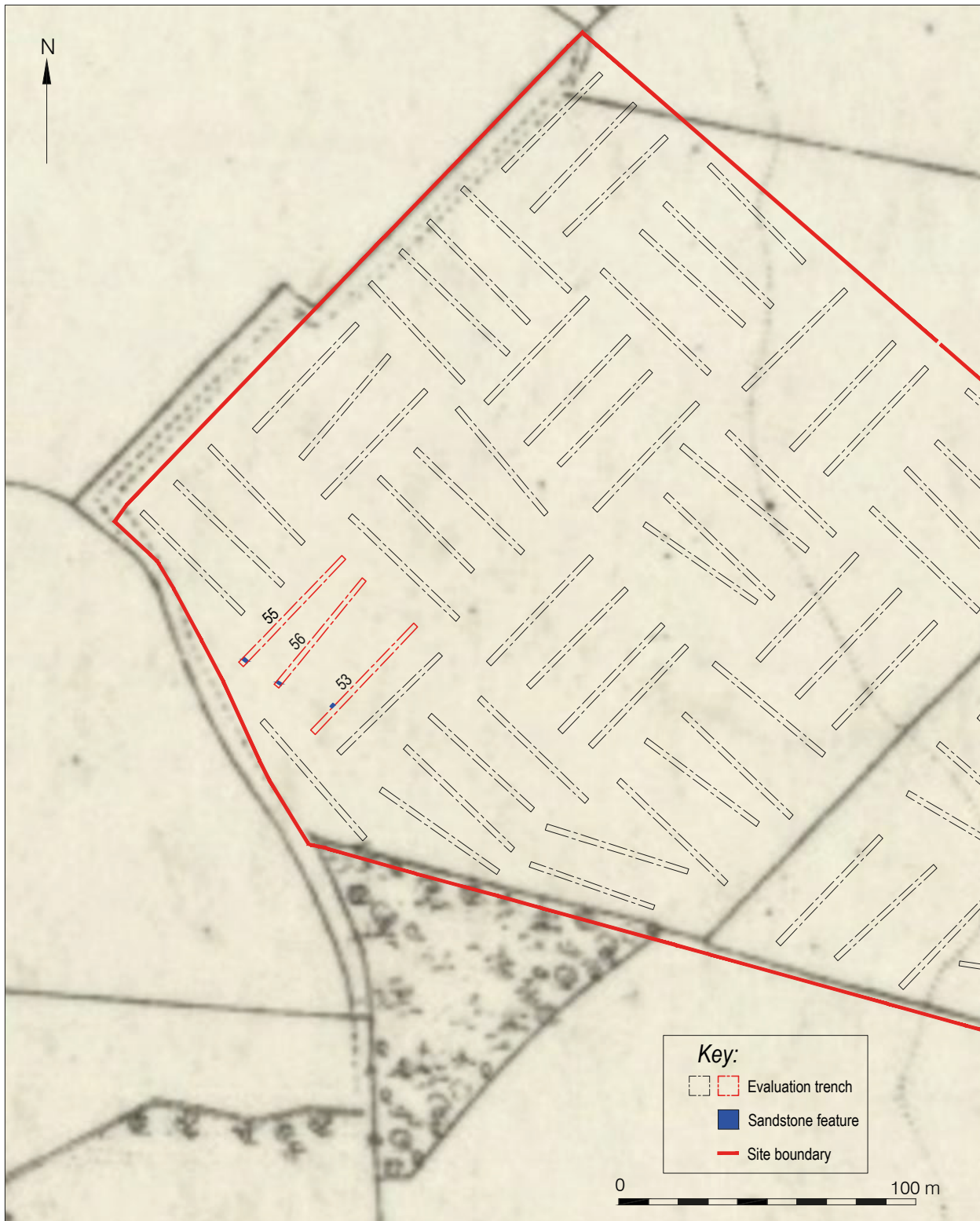


Figure 4: Plan of sandstone feature, trench 55.

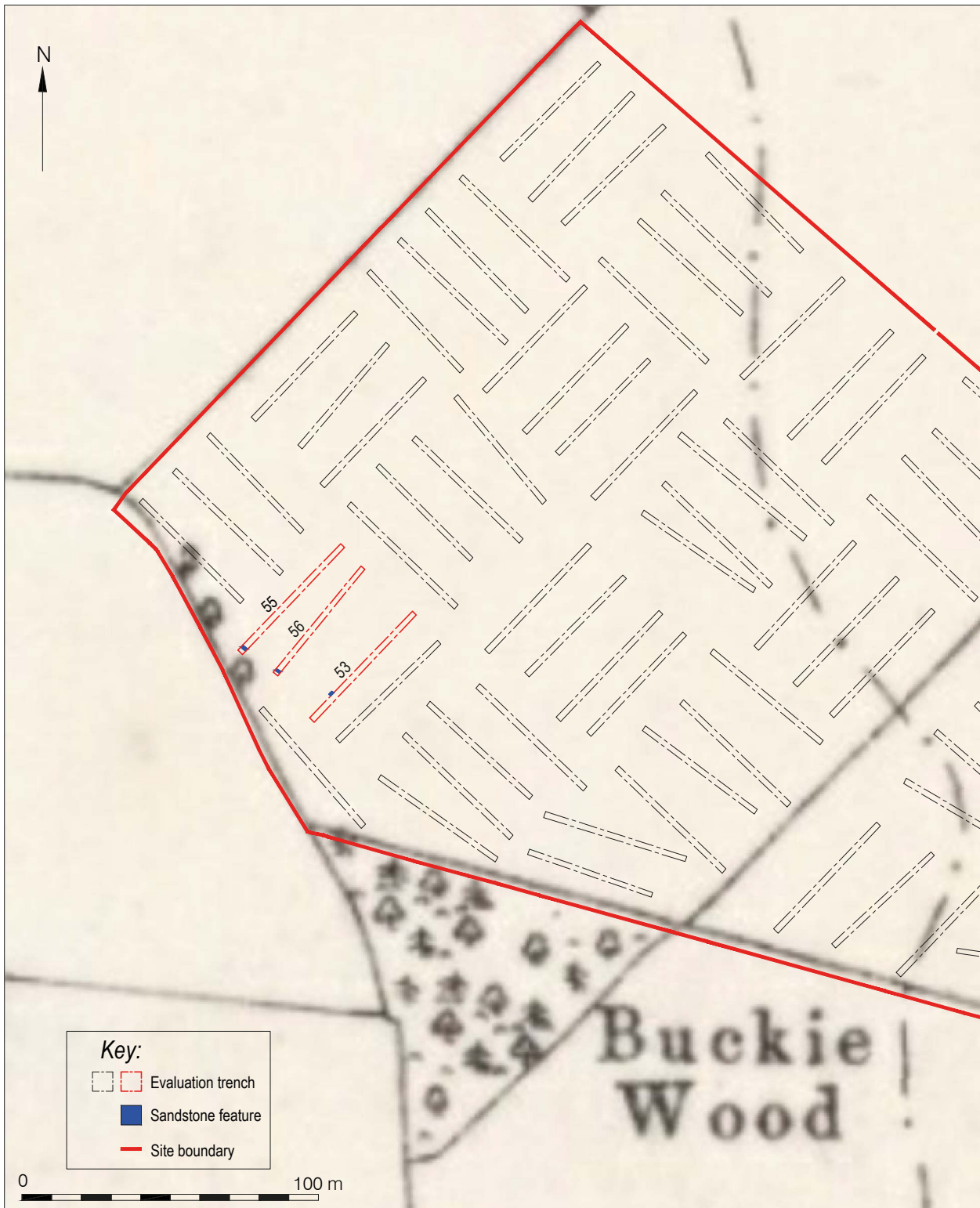
7.8.3 A slot was hand excavated through the sandstone block feature and outer rubble filled cut within trench 55. The cut (55007) had sloping sides and a flat base, 1.1 m in width and 0.3 m in depth. The sandstone blocks were set in a linear arrangement within this (55004). The blocks themselves were faced and measured c 0.7 m in length, 0.18 m in width and 0.25 m in depth, although size varied slightly. The cut channel was 90 mm in width and 80 mm in depth, and contained a light brown silt fill (55005) which appeared to comprise mostly of silted overburden material. The outer rubble fill of the cut (55006) was a light brown-orange silt with frequent sub-angular sandstone cobbles and small boulders. Within trench 55 several fragments of coarse white clay possibly from a ceramic drain (Bob Will, pers comm) were recovered within this, which suggests the possibility that the channel may originally have incorporated or supported ceramic drainage of some kind. Although the feature is elaborate for a field drain, this south-west corner of the field is the lowest downslope area where all the modern drainage converges, and its possible that this was intended as a more substantial drainage system to encourage run off and groundwater out of this lower area to aid in the prevention of waterlogging.

## Discussion

- 8.1 The trenching identified various features initially thought to hold archaeological potential, however on investigation these were mostly revealed as natural features. The furrow remains towards the north of the western field and within the two south-western trenches suggest there may have been an east-west orientated agricultural system in use at some point historically, but the sterile nature of the fill produced little else to further this.
- 8.2 The only feature of note was the sandstone block feature towards the south-west of the area. Although broadly interpreted as serving some kind of drainage function, the use of a cut channel within shaped blocks seems quite elaborate unless perhaps the blocks were reused from elsewhere and utilised for this function. It also begs the question of how this would function as a working drain without cap stones, assuming that these were not also robbed. It is possible that the slot within the blocks may have been intended to serve some kind of support or 'runner' function, however this would usually be expected to be associated with a structure or path or roadway of some kind; there was no evidence in any of the trenches of any associated earlier structural features or adjacent track or road features. The early edition Ordnance Survey maps do not depict any former structures or activity of any kind to which the feature may relate with no real changes across both the relevant fields depicted (Figure 5 and 6). Roy's 18th century Military Lowlands Map depicts a structure further to the north labelled as 'Steels Mains' and an agricultural system which may relate to the furrows found in the northern area, but nothing over the area of the stone feature.
- 8.3 It seems that the most conceivable function of the feature was as part of an early drainage system possibly reinforced in this area due to its downslope location, or else for some other agricultural related purpose. It is likely Post-Medieval in date given the presence of the ceramic sherds, and possibly as late as 18<sup>th</sup> or 19<sup>th</sup> century.



*Figure 5:  
Excerpt from Ordnance Survey 1854 Six inch 1st edition, Sheet XIII, showing  
development area and sandstone features*



*Figure 6:*  
 Excerpt from Ordnance Survey 1895 Six inch 2nd edition, Sheet VII.SE,  
 showing development area and sandstone features

## Recommendations

- 9.1 The evaluation work encountered no features of archaeological significance across the vast majority of the development area, with the only feature of note being the sandstone block feature present within the south-west area. This may have served some kind of drainage or other agricultural related function given the lack of any associated structural evidence, and is likely of later historic date.



- 9.2 It is possible that the Archaeological Advisors to Midlothian Council may require further investigative and recording work to be carried out in relation to this feature prior to the development of the site and the likely destruction of the material.
- 9.3 GUARD would stress that these recommendations are intended for guidance only. While the recommended mitigation strategy was developed following consultation with the Archaeological Advisors to Midlothian Council, final decisions on the nature and extent of any future archaeological work rest with the planning authority.
- 9.4 The online OASIS form at <http://ads.ahds.ac.uk/project/oasis/> (OASIS Reference: guardarc1-281409). will be completed within 3 months. Once the Data Structure Report has become a public document by submission to or incorporation into the SMR, East Lothian Council Archaeology Service will validate the OASIS form on behalf of Midlothian Council thus placing the information into the public domain on the OASIS website. Similarly a summary of the project result will be submitted to Discovery and Excavation in Scotland (DES), a copy of this is attached in Appendix G.

## Acknowledgements

- 10.1 GUARD Archaeology would like to thank Barratt East Scotland for their assistance. Plant and drivers were supplied by A M Dagg. Fieldwork was directed by Beth Spence, assisted by Clare Shaw. Project support was from Aileen Maule and Jen Cochrane. Illustrations were produced by Gillian McSwan. The report was desk top published by Gillian McSwan. The project was managed for GUARD Archaeology Ltd by Bob Will.

**Oak Place, Mayfield  
Data Structure Report**

**Section 2: Appendices**



[www.guard-archaeology.co.uk](http://www.guard-archaeology.co.uk)

## Appendices

### Appendix A: References

Canmore database, Historic Environment Scotland; <https://canmore.org.uk/>, last accessed 24<sup>th</sup> January 2017

Geology of Britain Viewer, British Geological Survey; <http://mapapps.bgs.ac.uk/geologyofbritain>, last accessed 24<sup>th</sup> January 2017

Ordnance Survey, 1854, Six inch 1<sup>st</sup> edition, Haddingtonshire, Sheet XIII (surveyed 1853)

Ordnance Survey, 1895, Six inch 2<sup>nd</sup> and later editions, Edinburghshire, Sheet VIII.SE (revised 1893)

Ordnance Survey, 1926, One-inch "Popular" editions, Scotland, Sheet 74 – Edinburgh

William Roy's Military Survey of Scotland; Lowlands, 1752-55

### Appendix B: List of Trenches

Tr No	Length (m)	Width (m)	Depth (m)	Topsoil/Overburden	Intermediate Hillwash	Subsoil	Details
1	50	2	up to 0.9 m	Moderately compacted dark brown grey loam with frequent small stone and root inclusions. 0.35 m in depth. Occasional modern rubble present.	Moderately compact mid brown silt with occasional small stone inclusions. Up to 0.6 m in depth.	Light mottled grey yellow gravel with frequent sandstone inclusions.	-
2	50	2	up to 0.55 m	Moderately compacted dark brown grey loam with frequent small stone and root inclusions. 0.3 m in depth.	Moderately compact mid brown silt with occasional small stone inclusions. Up to 0.3 m in depth.	Light grey beige sandy clay with frequent stone, some cobble sized.	Possible feature investigated (2004) - revealed as an irregular burrow.
3	50	2	up to 0.4 m	Moderately compacted dark brown grey loam with frequent small stone and root inclusions. 0.25 m - 0.3 m in depth.	Moderately compact mid brown silt with occasional small stone inclusions. Up to 0.15 m - 0.2 m in depth.	Light beige yellow grey sandy clay and sandstone bedrock, with frequent stones and small boulders.	-
4	50	2	0.5 m	Moderately compacted dark brown grey loam with frequent small stone and root inclusions. 0.3 m in depth.	Moderately compact mid brown silt with occasional small stone inclusions. 0.2 m in depth.	Light grey beige sandy clay and sandstone bedrock.	-
5	50	2	up to 0.6 m	Moderately compacted dark brown grey loam with frequent small stone and root inclusions. 0.3 m in depth.	Moderately compact mid brown silt with occasional small stone inclusions. Up to 0.3 m in depth.	Light - mid grey sandy clay with frequent sandstone inclusions.	-
6	50	2	0.5 m	Moderately compacted dark brown grey loam with frequent small stone and root inclusions. 0.3 m in depth.	Moderately compact mid brown silt with occasional small stone inclusions. 0.2 m in depth.	Mid grey sand clay with frequent stones, yellow sand clay with sandstone.	-
7	50	2	0.5 m	Moderately compacted dark brown grey loam with frequent small stone and root inclusions. 0.3 m in depth.	Moderately compact mid brown silt with occasional small stone inclusions. 0.2 m in depth.	Mid - light grey yellow sandy clay and sandstone.	-

Tr No	Length (m)	Width (m)	Depth (m)	Topsoil/Overburden	Intermediate Hillwash	Subsoil	Details
8	50	2	0.6 m	Moderately compacted dark brown grey silty loam with frequent small stone and root inclusions. 0.25 m - 0.3 m in depth.	Moderately compact mid brown silt with occasional small stone inclusions. Up to 0.3 m in depth.	Mid beige grey sandy clay	-
9	50	2	0.65 m	Moderately compacted dark brown grey silty loam with frequent small stone and root inclusions. 0.3 m in depth.	Moderately compact mid brown silt with occasional small stone inclusions. Up to 0.35 m in depth.	Mid beige grey brown sandy clay with frequent mixed sandstones.	-
10	50	2	0.65 m	Moderately compacted dark brown grey silty loam with frequent small stone and root inclusions. 0.25 m - 0.3 m in depth.	Moderately compact mid brown silt with occasional small stone inclusions. Up to 0.3 m - 0.4 m in depth.	Mid beige grey brown sandy clay with sandstone.	Possible feature investigated (10004), however revealed to be patchy organic concentrations, likely root action.
11	50	2	0.45 m	Moderately compacted dark brown grey silty loam with frequent small stone and root inclusions. 0.3 m in depth.	Moderately compact mid brown silt with occasional small stone inclusions. Up to 0.15 m - 0.2 m in depth.	Light beige yellow grey sandstone bedrock and mid grey sandy clay with sandstones.	-
12	50	2	0.6 m	Moderately compacted dark brown grey silty loam with frequent small stone and root inclusions. 0.25 m - 0.3 m in depth.	Moderately compact mid brown silt with occasional small stone inclusions. Up to 0.3 m in depth.	Mid beige brown grey sandy clay with frequent sandstones.	-
13	50	2	0.6 m	Moderately compacted dark brown grey silty loam with frequent small stone and root inclusions. 0.3 m in depth.	Moderately compact mid brown silt with occasional small stone inclusions. Up to 0.3 m in depth.	Mid brown grey sandy clay with frequent sandstones.	-
14	50	2	0.45 m	Moderately compacted dark brown grey silty loam with frequent small stone and root inclusions. 0.3 m in depth.	Moderately compact mid brown silt with occasional small stone inclusions. Up to 0.15 m in depth.	Light - mid beige grey sandy clay with frequent sandstones.	Rubble drain.
15	50	2	0.5 m	Moderately compacted dark brown grey silty loam with frequent small stone and root inclusions. 0.25 m in depth.	-	Light beige yellow sandy clay with frequent sandstones.	Rubble drains.
16	50	2	0.5 m	Moderately compacted dark brown grey silty loam with frequent small stone and root inclusions. 0.3 m in depth.	Moderately compact mid brown silt with occasional small stone inclusions. Up to 0.25 m in depth.	Mid brown grey sandy clay with frequent sandstones and gravel	Rubble drain
17	50	2	0.5 m - 0.9 m	Moderately compacted dark brown grey silty loam with frequent small stone and root inclusions. 0.25 m - 0.3 m in depth.	Moderately compact mid brown silt with occasional small stone inclusions. Up to 0.25 m - 0.7 m in depth.	Mid brown grey sandy clay with frequent sandstones	-
18	50	2	0.4 m	Moderately compacted dark brown grey silty loam with frequent small stone and root inclusions. 0.3 m in depth.	Moderately compact mid brown silt with occasional small stone inclusions. Up to 0.1 m - 0.15 m in depth.	Mid brown grey sandy clay with frequent sandstones.	-



Tr No	Length (m)	Width (m)	Depth (m)	Topsoil/Overburden	Intermediate Hillwash	Subsoil	Details
19	50	2	Up to 1 m	Moderately compacted dark brown grey silty loam with frequent small stone and root inclusions. 0.3 m in depth. Occasional modern material present.	Moderately compact mid brown silt with occasional small stone inclusions. Up to 0.7 m in depth.	Light beige bedrock sandstone and mid brown grey sandy clay with frequent stones	-
20	50	2	0.55 m	Moderately compacted dark brown grey silty loam with frequent small stone and root inclusions. 0.3 m in depth. Occasional modern rubble present.	Moderately compact mid brown silt with occasional small stone inclusions. Up to 0.25 m in depth.	Mid brown grey sandy clay with frequent stones	Modern deposit of industrial burnt sand and ash with CBM fragments and clinker (20004).
21	50	2	up to 0.8 m	Moderately - loosely compacted dark brown grey silty loam with frequent small stone and root inclusions. 0.3 m in depth. Occasional modern rubble/materials present.	Moderately compact mid brown silt with occasional small stone inclusions. Up to 0.6 m in depth. Only at north-east end.	Mid brown grey clay and sandstone bedrock.	Further modern deposit investigated - as Tr 20.
22	50	2	0.45 m	Moderately compacted dark brown grey silty loam with frequent small stone and root inclusions. 0.25 m -0.3 m in depth.	Moderately compact mid brown silt with occasional small stone inclusions. Up to 0.25 m in depth.	Mid grey and light beige grey sandy clay and sandstone bedrock.	-
23	50	2	0.5 m	Moderately - loosely compacted dark brown grey silty loam with frequent small stone and root inclusions. 0.25 m in depth. Occasional modern rubble/materials present.	Moderately compact mid brown silt with occasional small stone inclusions. Up to 0.3 m in depth.	Light to mid beige brown grey sandy clay with frequent sandstones.	Further modern deposit investigated - as Tr 20.
24	50	2	0.35 m	Moderately compacted dark brown grey silty loam with frequent small stone and root inclusions. 0.3 m in depth.	-	Light grey beige sandy clay with frequent stones.	Rubble and modern drains.
25	50	2	0.35 m	Moderately compacted dark brown grey silty loam with frequent small stone and root inclusions. 0.3 m in depth.	-	Light beige yellow grey sandy clay with frequent stones.	Rubble/ceramic drains.
26	50	2	0.3 m	Moderately compacted dark brown grey silty loam with frequent small stone and root inclusions. 0.3 m in depth.	-	Light beige yellow grey sandy clay with frequent stones.	Rubble/ceramic drains.
27	50	2	0.3 m	Moderately compacted dark brown grey silty loam with frequent small stone and root inclusions. 0.3 m in depth.	-	Light beige yellow grey sandy clay with frequent stones.	Rubble/ceramic drains.

Tr No	Length (m)	Width (m)	Depth (m)	Topsoil/Overburden	Intermediate Hillwash	Subsoil	Details
28	50	2	0.3 m	Moderately compacted dark brown grey loam with frequent small stone and root inclusions. 0.25 m - 0.3 m in depth.	-	Light - mid beige grey sandy clay with frequent stones.	Rubble/ceramic drains, plough scarring.
29	50	2	0.3 m	Moderately compacted dark brown grey loam with frequent small stone and root inclusions. 0.25 m - 0.3 m in depth.	-	Light beige grey yellow sandy clay with frequent stones	Rubble/ceramic drains, plough scarring.
30	50	2	0.3 m	Moderately compacted dark brown grey loam with frequent small stone and root inclusions. 0.25 m - 0.3 m in depth.	-	Light - mid beige grey sandy clay with frequent stones.	Rubble/ceramic drains.
31	50	2	0.3 m	Moderately compacted dark brown grey silty loam with frequent small stone and root inclusions. 0.3 m in depth.	-	Light grey beige sandy clay with frequent stones.	Rubble/ceramic drains.
32	50	2	0.3 m	Moderately compacted dark brown grey loam with frequent small stone and root inclusions. 0.25 m - 0.3 m in depth.	-	Light - mid grey beige sandy clay with frequent stones.	Rubble/ceramic drains.
33	50	2	0.35 m	Moderately compacted dark brown grey loam with frequent small stone and root inclusions. 0.3 m in depth.	-	Mid beige brown grey sandy clay with frequent stones	Rubble/ceramic drains.
34	50	2	0.3 m	Moderately compacted dark brown grey silty loam with frequent small stone and root inclusions. 0.3 m in depth.	-	Light - mid beige grey sandy clay with frequent stones	Rubble drains.
35	50	2	0.3 m	Moderately compacted dark brown grey loam with frequent small stone and root inclusions. 0.3 m in depth.	-	Mid brown grey sandy clay with frequent sandstones	Rubble drains.
36	50	2	0.35 m	Moderately compacted dark brown grey loam with frequent small stone and root inclusions. 0.35 m in depth.	-	Light - mid brown grey sandy clay with frequent stones.	Rubble/ceramic drains.
37	50	2	0.3 m	Moderately compacted dark brown grey silty loam with frequent small stone and root inclusions. 0.3 m in depth.	-	Light - mid grey beige sandy clay with frequent stones.	Three possible furrow features - see 37003
38	50	2	0.3 m	Moderately compacted dark brown grey silty loam with frequent small stone and root inclusions. 0.25 m - 0.3 m in depth.	-	Light grey beige sandy clay with frequent stones.	Two furrows, as Tr 37/39

Tr No	Length (m)	Width (m)	Depth (m)	Topsoil/Overburden	Intermediate Hillwash	Subsoil	Details
39	50	2	0.3 m	Moderately compacted dark brown grey silty loam with frequent small stone and root inclusions. 0.3 m in depth.	-	Light grey beige sandy clay and sandstone bedrock with frequent stones.	Two furrows, as Tr 37/38 - see 39003
40	50	2	0.3 m	Moderately compacted dark brown grey silty loam with frequent small stone and root inclusions. 0.25 m - 0.3 m in depth.	-	Light grey beige sandy clay with frequent stones.	One possible furrow - as Tr 37 -39
41	50	2	0.3 m	Moderately compacted dark brown grey silty loam with frequent small stone and root inclusions. 0.3 m in depth.	-	Light grey beige sandy clay with frequent stones.	Rubble/ceramic drains.
42	50	2	0.35 m	Moderately compacted dark brown grey loam with frequent small stone and root inclusions. 0.3 m in depth.	-	Light - mid grey beige sandy clay with frequent stones.	Rubble/ceramic drains.
43	50	2	0.3m	Moderately compacted dark brown grey loam with frequent small stone and root inclusions. 0.3 m in depth.	-	Mid beige brown grey sandy clay with frequent stones.	Rubble/ceramic drains.
44	50	2	0.35 m	Moderately compacted dark brown grey loam with frequent small stone and root inclusions. 0.3 m - 0.35 m in depth.	-	Mid beige brown grey sandy clay with frequent stones.	Ceramic drains
45	50	2	0.35 m	Moderately compacted dark brown grey loam with frequent small stone and root inclusions. 0.35 m in depth.	-	Mottled light beige grey and mid brown grey sandy clay with frequent stones and gravel	Rubble drains.
46	50	2	0.3 m	Moderately compacted dark brown grey loam with frequent small stone and root inclusions. 0.3 m in depth.	-	Mid beige brown grey sandy clay with frequent stones.	Rubble/ceramic drains.
47	50	2	0.35 m	Moderately compacted dark brown grey loam with frequent small stone and root inclusions. 0.3 m - 0.35 m in depth.	-	Mid brown grey sandy clay with frequent stones	Rubble/ceramic drains.
48	50	2	0.3 m	Moderately compacted dark brown grey loam with frequent small stone and root inclusions. 0.25 m - 0.3 m in depth.	Moderately compact mid brown silt with occasional small stone inclusions. Up to 0.1 m -0.15 m in depth.	Mid brown grey sandy clay with frequent stones	Rubble/ceramic drains.
49	50	2	0.3 m	Moderately compacted dark brown grey loam with frequent small stone and root inclusions. 0.3 m in depth.	Moderately compact mid brown silt with occasional small stone inclusions. Up to 0.1 m in depth.	Light - mid beige grey sandy clay with frequent stones	Rubble/ceramic drains.

Tr No	Length (m)	Width (m)	Depth (m)	Topsoil/Overburden	Intermediate Hillwash	Subsoil	Details
50	50	2	0.35 m	Moderately compacted dark brown grey loam with frequent small stone and root inclusions. 0.3 m in depth.	-	Mid brown grey sandy clay with frequent stones	Rubble/ceramic drains.
51	50	2	0.45 m	Moderately compacted dark brown grey loam with frequent small stone and root inclusions. 0.3 m in depth.	Moderately compact mid brown silt with occasional small stone inclusions. Up to 0.15 m -0.2 m in depth.	Mid brown grey sandy clay with frequent stones.	Rubble/ceramic drains.
52	50	2	0.35 m	Moderately compacted dark brown grey loam with frequent small stone and root inclusions. 0.35 m in depth.	Moderately compact mid brown silt with occasional small stone inclusions. Up to 0.15 m in depth.	Mid beige brown grey sandy clay with frequent stones.	Rubble/ceramic drains.
53	50	2	up to 0.5 m	Moderately compacted dark brown grey loam with frequent small stone and root inclusions. 0.3 m in depth.	Moderately compact mid brown silt with occasional small stone inclusions. Up to 0.2 m in depth.	Mid - light beige grey brown sandy clay with frequent stones	Furrow feature (53006/53007) and partial sandstone feature (53004/53005/53008)
54	50	2	0.3 m	Moderately compacted dark brown grey loam with frequent small stone and root inclusions. 0.25m -0.3 m in depth.	-	Mid - light beige brown grey sandy clay with frequent stones.	Furrow feature, as Tr 53
55	50	2	up to 0.55 m	Moderately compacted dark brown grey loam with frequent small stone and root inclusions. 0.3 m in depth.	Moderately compact mid brown sandy silt with occasional small stone inclusions. Up to 0.25 m in depth.	Mid brown grey sandy clay with frequent stones.	Sandstone block linear feature with cut slot - see 55004 - 55007
56	50	2	0.5 m	Moderately compacted dark brown grey loam with frequent small stone and root inclusions. 0.3 m in depth.	Moderately compact mid brown sandy silt with occasional small stone inclusions. Up to 0.25 m in depth.	Mid brown grey sandy clay with frequent stones	Sandstone block linear feature with cut slot - see 56004 - 56006
57	50	2	up to 0.45 m	Moderately compacted dark brown grey loam with frequent small stone and root inclusions. 0.3 m in depth.	Moderately compact mid brown sandy silt with occasional small stone inclusions. 0.15 m in depth.	Light beige grey sandy clay with frequent stones	Rubble/ceramic drains.
58	50	2	0.35 m	Moderately compacted dark brown grey loam with frequent small stone and root inclusions. 0.35 m in depth.	-	Light beige grey sandy clay with frequent stones	Rubble/ceramic drains.
59	50	2	0.3 m	Moderately compacted dark brown grey loam with frequent small stone and root inclusions. 0.3 m in depth.	Moderately compact mid brown sandy silt with occasional small stone inclusions. 0.15 m in depth.	Mid brown grey sandy clay with frequent stones	Rubble/ceramic drains.
60	50	2	0.5 m	Moderately compacted dark brown grey loam with frequent small stone and root inclusions. 0.3 m in depth.	Moderately compact mid brown sandy silt with occasional small stone inclusions. 0.2 m in depth.	Mid brown grey sandy clay with frequent stones	Rubble/ceramic drains.



Tr No	Length (m)	Width (m)	Depth (m)	Topsoil/Overburden	Intermediate Hillwash	Subsoil	Details
61	50	2	0.5 m	Moderately compacted dark brown grey loam with frequent small stone and root inclusions. 0.25 m -0.3 m in depth.	Moderately compact mid brown sandy silt with occasional small stone inclusions. 0.2 m in depth.	Light grey beige sandstone bedrock and light - mid beige grey sandy clay with frequent stones	Rubble/ceramic drains.
62	50	2	0.55 m	Moderately compacted dark brown grey loam with frequent small stone and root inclusions. 0.3 m in depth.	Moderately compact mid brown sandy silt with occasional small stone inclusions. 0.25 m in depth.	Light brown beige - mid brown grey sandy silt clay and bedrock with frequent stones	Rubble/ceramic drains.
63	50	2	0.35 m	Moderately compacted dark brown grey loam with frequent small stone and root inclusions. 0.35 m in depth.	-	Light brown beige - mid brown grey sandy silt clay, mottled with frequent stones	Rubble/ceramic drains.
64	50	2	0.5 m	Moderately compacted dark brown grey silty loam with frequent small stone and root inclusions. 0.3 m in depth.	Moderately compact mid brown sandy silt with occasional small stone inclusions. 0.2 m in depth.	Light brown beige - mid brown grey sandy silt clay and bedrock with frequent stones	Rubble/ceramic drains.
65	50	2	0.3 m	Moderately compacted dark brown grey silty loam with frequent small stone and root inclusions. 0.25 m - 0.3 m in depth.	-	Light brown beige sandstone bedrock and mid brown gravelly clay	Rubble drains.
66	50	2	0.4 m	Moderately compacted dark brown grey silty loam with frequent small stone and root inclusions. 0.3 m in depth.	Moderately compact mid brown sandy silt with occasional small stone inclusions. 0.1 m -0.15 m in depth.	Mid brown grey sandy clay and silty clay frequent stones	Rubble/ceramic drains.
67	50	2	0.4 m	Moderately compacted dark brown grey silty loam with frequent small stone and root inclusions. 0.25 m - 0.3 m in depth.	Moderately compact mid brown sandy silt with occasional small stone inclusions. 0.15 m in depth.	Mid brown grey sandy clay with frequent stones	Rubble/ceramic drains.
68	50	2	0.3 m	Moderately compacted dark brown grey silty loam with frequent small stone and root inclusions. 0.3 m in depth.	-	Mid brown grey sandy clay with frequent stones	Rubble/ceramic drains.
69	50	2	up to 0.4 m	Moderately compacted dark brown grey loam with frequent small stone and root inclusions. 0.3 m in depth.	Moderately compact mid brown sandy silt with occasional small stone inclusions. 0.1 m in depth.	Mid - light beige grey sandy clay with frequent stones	Rubble/ceramic drains.
70	50	2	0.5 m	Moderately compacted dark brown grey loam with frequent small stone and root inclusions. 0.3 m in depth.	Moderately compact mid brown sandy silt with occasional small stone inclusions. 0.2 m in depth.	Mid brown grey silty clay with frequent stones	Rubble/ceramic drains.
71	50	2	0.35 m	Moderately compacted dark brown grey loam with frequent small stone and root inclusions. 0.3 m in depth.	Moderately compact mid brown sandy silt with occasional small stone inclusions. 0.1 m in depth.	Mid beige brown grey sandy clay with frequent stones.	Rubble/ceramic drains.

Tr No	Length (m)	Width (m)	Depth (m)	Topsoil/Overburden	Intermediate Hillwash	Subsoil	Details
72	50	2	0.45 m	Moderately compacted dark brown grey loam with frequent small stone and root inclusions. 0.25 m in depth.	Moderately compact mid brown sandy silt with occasional small stone inclusions. 0.2 m in depth.	Mid brown grey gravelly silty clay with frequent stones	Rubble/ceramic drains.
73	50	2	up to 0.45 m	Moderately compacted dark brown grey loam with frequent small stone and root inclusions. 0.3 m in depth.	Moderately compact mid brown sandy silt with occasional small stone inclusions. 0.15 m in depth.	Mid brown grey gravelly silty clay with frequent stones	Rubble/ceramic drains.
74	50	2	up to 0.4 m	Moderately compacted dark brown grey loam with frequent small stone and root inclusions. 0.25 m in depth.	Moderately compact mid brown sandy silt with occasional small stone inclusions. 0.2 m in depth.	Mid brown grey gravelly silty clay with frequent stones	Rubble/ceramic drains.
75	50	2	0.3 m	Moderately compacted dark brown grey silty loam with frequent small stone and root inclusions. 0.3 m in depth.	-	Light - mid grey brown beige sandy clay and gravel with frequent stones	Rubble/ceramic drains.
76	50	2	up to 0.6 m	Moderately compacted dark brown grey silty loam with frequent small stone and root inclusions. 0.3 m in depth.	Moderately compact mid brown sandy silt with occasional small stone inclusions. 0.3 m in depth.	Mid grey sandy clay and mid brown silty clay with frequent stones	Rubble/ceramic drains.
77	50	2	0.45 m	Moderately compacted dark brown grey silty loam with frequent small stone and root inclusions. 0.3 m in depth.	Moderately compact mid brown sandy silt with occasional small stone inclusions. 0.2 m in depth.	Light - mid brown grey mixed sandy clay and gravelly silts with frequent stones	Rubble/ceramic drains.
78	50	2	0.5 m	Moderately compacted dark brown grey silty loam with frequent small stone and root inclusions. 0.5 m in depth.	Moderately compact mid brown sandy silt with occasional small stone inclusions. 0.25 m in depth.	Mid brown grey gravelly silt and silty clay with frequent stones	Rubble/ceramic drains.
79	50	2	0.25 m	Moderately compacted dark brown grey silty loam with frequent small stone and root inclusions. 0.25 m in depth.	-	Light grey beige sandy clay and mid brown grey silty clay	Rubble/ceramic drains.
80	50	2	0.25 m	Moderately compacted dark brown grey silty loam with frequent small stone and root inclusions. 0.25 m in depth.	-	Mid brown grey gravelly silt and light beige grey silty clay with frequent stones	Rubble/ceramic drains.
81	50	2	0.3 m	Moderately compacted dark brown grey silty loam with frequent small stone and root inclusions. 0.3 m in depth.	Moderately compact mid brown sandy silt with occasional small stone inclusions. Up to 0.4 m in depth.	Light grey beige sandy clay with occasional - frequent stones	Rubble/ceramic drains, plough scarring.

### Appendix C: List of Contexts:

Context No	Area	Description	Interpretation
2004	Tr 2	Small feature investigated measuring 0.38 m by 0.24 m with a depth of 0.05 m containing mixed topsoil fill within irregular cut.	Natural burrow feature.
10004	Tr 10	Small irregular patches of dark organic rich material mixed with subsoil and some topsoil, with occasional small stones. Present over an area of 0.72 m by 0.5 m with a depth of 0.02 m.	Likely the result of root action. Natural deposit.
20004	Tr 20	Moderately compact brown and red silt and sand with building rubble materials, ash, blaes and clinker, 0.95 m by 1.3 m, 0.2 m in depth	Dumped material from construction of adjacent housing estate. Similar material in topsoil and also trenches 23 and 28. Modern deposit.
37004	Tr 37	Moderately compacted light orange yellow sandy silt with few inclusions. Feature is 1.4 m in width and 0.35 m in depth, within a shallow flat based cut.	Likely furrow, part of occasionally visible system in this upslope area.
39004	Tr 39	Moderately compacted light orange yellow sandy silt with few inclusions. Feature is 1.25 m in width and 0.3 m in depth, within a shallow sloping sided flat based cut.	Likely furrow, part of occasionally visible system in this upslope area.
53004	Tr 53	Sandstone block, 0.2 m in width with evidence of cut slot at upper face.	Small section of sandstone block feature present in south-west section of trench, within rubble filled cut. As 55004/56004. Looks as if feature may have been robbed/disturbed or terminated at this point as does not extend across the full extent of the trench.
53005	Tr 53	Steep sided flat based cut, measuring 0.7 m in width by 0.5 m in depth. Orientated north-west/south-east.	Cut containing sandstone block feature 53004 and rubble packed fill 53008. Visible in south-west section of trench.
53006	Tr 53	Sort-medium compaction, light orange yellow silt sand with occasional small stones, 4.6 m in width and 0.5 m in depth.	Sandy sterile furrow fill.
53007	Tr 53	Gently sloping sided and flat based cut of linear furrow feature, 1.8 m in width and 0.5 m in depth, orientated north-west/south-east.	Cut of furrow feature.
53008	Tr 53	Moderately compact mid brown orange silt with frequent large angular cobble sized stones, 0.5 m in depth and 0.7 m in width.	Fill of cut 53004; packing material around sandstone block feature 53004.
55004	Tr 55	Blonde sandstone blocks and angular sandstone boulders, unbonded, blocks are 0.7 m in length by 0.66 m in width and 0.18 m in depth.	Sandstone block feature with slot cut into the upper face - constructed of faced blocks side set blocks within a rubble filled cut. North-west/south-east orientated.
55005	Tr 55	Light brown softly compacted silt, fills 0.08 m wide slot in sandstone blocks 55004	Sandy silt fill of slot/channel cut into sandstone blocks 55004 - appears to have silted in, slot is uncapped so likely accumulated.
55006	Tr 55	Compacted light brown orange silt with frequent large angular sandstone boulders, 1.1 m in width and 0.3 m in depth.	Fill of cut 55007 for sandstone feature 55004. Packing material. White clay ceramic drain fragments found within.
55007	Tr 55	Steep sided flat based cut, 1.1 m in width and 0.3 m in depth, orientated north-west/south-east.	Cut for sandstone block feature - containing rubble packing material.
56004	Tr 56	Sandstone block feature, blocks up to 1.15 m in length and 0.3 m in width, faced with slot cut into upper face. See also 55004.	Sandstone block feature, as 55004, within Tr 56.
56005	Tr 56	Softly compacted light brown silt, fills 0.08 m wide slot in sandstone blocks 56004.	Silty fill of slot within blocks 56004, likely accumulated as slot uncapped.

### Appendix D: List of Samples

Sample No	Area	Context No	Size	Reason for Sampling				Application/Comments
				Pot	Bone	Lithics	Botanics	
1	Tr 55	55006	L					Fill of cut 55007 for sandstone block feature
2	Tr 55	55005	L					Fill of slot within sandstone block feature
3	Tr 53	53006	L					Sterile sandy fill of furrow feature

## Appendix E: List of Finds

Find No	Area	Context No	No of Pieces	Material	Type	Description
1	Tr 55	55006	-	CBM	Drain	Likely ceramic drain fragments
2	Tr 53	53008	-	Ceramic	Pottery	Possible vessel fragments, likely Post Medieval date

## Appendix F: List of Digital Images

Film No.	1		
Frame	Area	Subject	Taken from
1	-	ID shot	-
2	-	General shots of area	W
3	-	General shots of area	S
4	-	General shots of area	NE
5	-	General shots of area	E
6	T1	T1 ID	-
7	T1	NW facing section	NW
8	T1	Post ex T1	SW
9	T1	Post ex T1 - NE end	SW
10	T2	T2 ID	-
11	T2	SW facing section	SW
12	-	General shots towards Edinburgh	S
13	-	General shots towards Edinburgh	S
14	-	General shots towards Edinburgh	S
15	T2	Post ex T2	SE
16	T2	Post ex T2	SE
17	T3	T3 ID	-
18	T3	E facing section	E
19	T3	Post ex T3	NNE
20	T4	T4 ID	-
21	T4	SE facing section	SE
22	T4	SE facing section	SE
23	T4	T4 post ex	NE
24	T4	T4 post ex	NE
25	T5	T5 ID	-
26	T5	SE facing section	SE
Film No.	2		
1	T5	Post ex T5	NE
2	T5	Post ex T5	NE
3	T6	T6 ID	-
4	-	SW facing section	SW
5	-	Post ex T6	SE
6	T7	SE facing section of undulation	SE
7	T7	SE facing section of undulation	SE
8	T7	SE facing section of undulation	S
9	T7	SE facing section of undulation	S
10	T7	Linear undulation	NE
11	T7	Linear undulation	NE
12	T7	SE facing section	SE
13	T7	Post ex T7	NE
14	T7	Post ex T7	NE
15	T8	T8 ID	-
16	T8	SW facing section	SW
17	T8	Post ex T8	NW
18	T9	T9 ID	-
19	T9	SW facing section	SW
20	T9	Post ex T9	SE

Frame	Area	Subject	Taken from
21	-	General of machine and trenches	W
22	T10	T10 ID	-
23	T10	SW facing section	SW
24	T10	SW facing section	SW
25	T10	Possible burnt feature	NE
26	T10	Post ex T10	NW
27	T11	T11 ID	-
28	T11	NW facing section	NW
29	T11	Post ex T11	NE
30	T11	Possible linear	SW
31	T11	Possible linear	NW
32	T12	T12 ID	-
33	T12	Possible linear	NW
34	T12	Possible linear	SW
35	T12	SE facing section	SE
36	T12	Post ex T12	NW
37	T13	T13 ID	-
38	T13	SE facing section	SE
39	T13	Post ex T13	NE
40	T14	T14 ID	-
41	T14	Rubble drain	S
42	T14	SE facing section	SE
43	T14	Post ex T14	NE
44	T15	T15 ID	-
45	T15	SE facing section	SE
46	T15	Post ex T15	NE
47	T16	T16 ID	-
48	T16	SE facing section	SE
49	T16	Post ex T16	NE
50	T17	T17 - NE facing section	NE
51	T17	T17 - NE facing section	NE
52	T17	NE facing section of test pit	NE
53	T17	NE facing section of test pit	NE
54	T17	Test pit	W
55	T17	Post ex T17	NW
56	T18	T18 - NE facing section	NE
57	T18	Post ex T18	NW
58	T19	T19 ID	-
59	T19	NE facing section	NE
60	T19	Post ex T19	NW
61	T20	T20 ID	-
62	T20	NE facing section	NE
63	T20	Post ex T20	NW
64	T21	Industrial material	SW
65	T21	SE facing section	SE
66	T21	Post ex T21 - NE end	NE
67	T21	Post ex T21 - NE end	NE
68	T21	SE section at industrial material	SE
69	T21	Post ex T21	SW
70	T22	T22 - S facing section	S
71	T22	Post ex T22	E
72	T23	T23 ID	-
73	T23	Possible undulation	W
74	T23	Possible undulation	N
75	T23	SE facing section at test pit	SE



Frame	Area	Subject	Taken from
76	T23	Post ex T23	NW
77	-	General shot towards Pentlands	E
78	-	General shot towards Edinburgh	SE
79	-	General shot towards Edinburgh	SE
80	-	General shot to south	N
81	-	General shot to NW	SE
82	-	General shot of machine starting	S
83	-	General shot to NE	SW
84	T24	T24 ID	-
85	T24	Drainage	SE
86	T24	NE facing section	NE
87	T24	Post ex T24	NW
88	T25	T25 ID	-
89	T25	Ceramic drain	E
90	T25	NE facing section	NE
91	T25	Post ex T25	NW
92	T26	T26 ID	-
93	T26	NE facing section	NE
94	T26	Post ex T26	NW
95	T27	T27 ID	-
96	T27	NE facing section	NE
97	T27	Post ex T27	NW
98	T28	T28 ID	-
99	T28	SE facing section	SE
100	T28	Post ex T28	NE
101	T29	T29 ID	-
102	T29	SE facing section	SE
103	T29	Post ex T29	NE
104	T30	T30 ID	-
105	T30	SE facing section	SE
106	T30	Post ex T30	NE
107	T31	T31 ID	-
108	T31	NE facing section	NE
109	T31	Post ex T31	NW
110	T32	T32 ID	-
111	T32	NE facing section	NE
112	T32	Post ex T32	NW
113	T33	T33 ID	-
114	T33	NE facing section	NE
115	T33	Post ex T33	WNW
116	T34	T34 - post ex	WNW
117	T35	T35 ID	-
118	T35	NE facing section	NE
119	T35	Post ex T35	WNW
120	T36	T36 ID	-
121	T36	NE facing section	NE
122	T36	Post ex T36	NW
123	T37	T37 ID	-
124	T37	NW facing section	NW
125	T37	Furrow	E
126	T37	Furrows	E
127	T37	Furrows	E
128	T37	NW facing section of furrow	NW
129	T37	NW facing section of furrow	N
130	T37	Post ex T37	-

Frame	Area	Subject	Taken from
131	T38	T38 ID	-
132	T38	Furrow	E
133	T38	Furrow	E
134	T38	NW facing section	NW
135	T38	Post ex T38	SW
136	T39	T39 ID	-
137	T39	SE facing section	SE
138	T39	Furrows	W
139	T39	Furrows	SW
140	T39	SE facing section	S
141	T39	SE facing section	SE
142	T39	Post ex T39	NE
143	T40	T40 ID	-
144	T40	NE facing section	NE
145	T40	Possible furrow	E
146	T40	Possible furrow	SE
147	T40	Post ex T40	-
148	T41	T41 ID	-
149	T41	SW facing section	SW
150	T41	Post ex T41	NW
151	T42	T42 ID	-
152	T42	NE facing section	NE
153	T42	Post ex T42	NW
154	T43	T43 - NE facing section	NE
155	T43	Post ex T43	NW
156	T44	T44 ID	-
157	T44	NW facing section	NW
158	T44	Post ex T44	NE
159	T45	T45 ID	-
160	T45	SE facing section	SE
161	T45	Post ex T45	NE
162	T46	T46 ID	-
163	T46	SE facing section	SE
164	T46	Post ex T46	NE
165	T47	T47 ID	-
166	T47	SE facing section	SE
167	T47	Post ex T47	NW
<b>Film No.</b>	<b>3</b>		
1	-	ID shot	-
2	T48	T48 ID	-
3	T48	SW facing section	SW
4	T48	Post ex T48	SE
5	T49	T49 ID	-
6	T49	SW facing section	SW
7	T49	Post ex T49	SE
8	T50	T50 ID	-
9	T50	SW facing section	SW
10	T50	Post ex T50	SE
11	T51	T51 ID	-
12	T51	NE facing section	NE
13	T51	Post ex T51	SE
14	T52	T52 ID	-
15	T52	NE facing section	NE
16	T52	Post ex T52	NW
17	T53	T53 ID	-

Frame	Area	Subject	Taken from
18	T53	NW facing section	NW
19	T53	Post ex T53	NE
20	T54	T54 ID	-
21	T54	NW facing section	NW
22	T54	Furrow	E
23	T54	Furrow	NE
24	T54	SE facing section of furrow	SE
25	T54	SE facing section of furrow	E
26	T54	SE facing section of furrow	SE
27	T54	Post ex T54	SW
28	T55	T55 ID	-
29	T55	NW facing section	NW
30	T55	Post ex T55	NE
31	T56	T56 ID	-
32	T56	NW facing section	NW
33	T56	Post ex T56	NE
34	T57	T57 ID	-
35	T57	SW facing section	SW
36	T57	Post ex T57	NW
37	-	General towards farm	S
38	T58	T58 ID	-
39	T58	SW facing section	SW
40	T58	Post ex T58	NW
41	T59	T59 ID	-
42	T59	NE facing section	NE
43	T59	Post ex T59	NW
44	T60	T60 ID	-
45	T60	SW facing section	SW
46	T60	Post ex T60	NW
47	T61	T61 - SE facing section	SE
48	T61	T61 ID	-
49	T61	SE facing section at test pit	SE
50	T61	Post ex T61	SW
51	T62	T62 - NW facing section	NW
52	T62	Post ex T62	SW
53	T63	T63 ID	-
54	T63	SE facing section	SE
55	T63	Post ex T63	SW
56	T64	T64 ID	-
57	T64	SE facing section	SE
58	T64	Post ex T64	SW
59	T65	T65 ID	-
60	T65	NE facing section	NE
61	T65	Post ex T65	SE
62	T65	Post ex T65	SE
63	T66	T66 ID	-
64	T66	NE facing section	NE
65	T66	Plastic drain	SW
66	T66	Post ex T66	SE
67	T67	T67 ID	-
68	T67	SW facing section	SW
69	T67	Post ex T67	SE
70	T68	T68 ID	-
71	T68	SW facing section	SW
72	T68	Post ex T68	SE

Frame	Area	Subject	Taken from
73	T69	T69 ID	-
74	T69	SW facing section	SW
75	T69	Post ex T69	SE
76	T70	T70 ID	-
77	T70	SW facing section at test pit	SW
78	T70	Burst ceramic drain	NE
79	T70	Burst ceramic drain	NW
80	T70	Burst ceramic drain	NW
81	T70	Burst ceramic drain	NE
82	T71	T71 ID	-
83	T71	SW facing section	SW
84	T71	Post ex T71	SE
85	T72	T72 - plastic drain	W
86	T72	T72 ID	-
87	T72	NW facing section	NW
88	T72	Post ex T72	SW
89	T73	T73 ID	-
90	T73	NW facing section	NW
91	T73	Post ex T73	SW
92	T74	T74 ID	-
93	T74	NW facing section	NW
94	T74	Post ex T74	SW
95	T75	T75 ID	-
96	T75	SW facing section	SW
97	T75	Post ex T75	SE
98	T76	T76 ID	-
99	T76	SW facing section	SW
100	T76	Post ex T76	SE
101	T77	T77 ID	-
102	T77	SW facing section	SW
103	T77	Post ex T77	SE
104	T78	T78 ID	-
105	T78	SW facing section	SW
106	T78	Post ex T78	SE
107	T79	T79 - NW facing section	NW
108	T79	Post ex T79	NE
109	T80	T80 ID	-
110	T80	NW facing section	NW
111	T80	Post ex T80	NE
112	T81	T81 ID	-
113	T81	SE facing section	SE
114	T81	Post ex T81	NE
115	-	General of trenches - W area	NE
116	-	General of trenches - W area	E
117	T55	Feature Teram covered	SW
118	T56	Feature Teram covered	SW
119	-	General of trenches - E area	N
120	-	General of trenches - E area	NE
121	-	Trenches 55/56 backfilled	NE
122	T53	Feature teram covered	SW
123	-	General of trenches backfilled	SE
124	T70	Drain repaired	NW
<b>Film No.</b>	<b>3</b>		
1	-	ID shot	-
2	T21	Detail of modern feature	W

Frame	Area	Subject	Taken from
3	T23	Detail of shallow industrial spread	W
4	T20	Detail of modern spread	W
5	T12	General of plough scar	S
6	T10	Pre ex of dark spread	N
7	T10	Section of dark patches	N
8	T2	Section of animal burrow	NE
9	T55	Sandstone feature	NW
10	T55	Sandstone feature, part excavated	SW
11	T56	Sandstone feature	SE
12	T56	Sandstone feature, part excavated	SW
13	T55	Sandstone feature	SE
14	T55	Sandstone feature	NE
15	T55	Slot through feature	SE
16	T55	Section	NW
17	T53	Furrow and sandstone feature	S
18	T53	Detail of stones	NW
19	T53	NW facing section of slot	NW
20	T53	SE facing section of slot - NW end	SE
21	T53	SE facing section of slot - SE end	SE
22	T53	General shot of section	SE
23	T53	General shot of section	SE

## Appendix G: Discovery and Excavation in Scotland entry

LOCAL AUTHORITY:	Midlothian
PROJECT TITLE/SITE NAME:	Oak Place, Mayfield
PROJECT CODE:	4348
PARISH:	Newbattle
NAME OF CONTRIBUTOR(S):	Beth Spence
NAME OF ORGANISATION:	Guard Archaeology Ltd
TYPE(S) OF PROJECT:	Archaeological Evaluation
NMRS NO(S):	---
SITE/MONUMENT TYPE(S):	---
SIGNIFICANT FINDS:	---
NGR (2 letters, 6 figures)	NT 355 651
START DATE (this season)	9 <sup>th</sup> January 2017
END DATE (this season)	19 <sup>th</sup> January 2017
PREVIOUS WORK (incl. DES ref.)	---
MAIN (NARRATIVE) DESCRIPTION: (May include information from other fields)	An archaeological evaluation was carried out on an area proposed for the development. The trial trench evaluation consisted of a series of 81 trenches of 50 m length totalling 10% of the total area proposed for development. Several features of archaeological potential were investigated, however only one feature was deemed on investigation to be of significance. This consisted of a shaped sandstone blocks with a channel cut into the upper surface which was found within three adjacent trenches within the south-west corner of the development area. Several sherds of ceramic drain pipe and Post Medieval ceramic were recovered from the cut containing the stone blocks. The feature was interpreted as having a likely agricultural function and later historic date.
PROPOSED FUTURE WORK:	None
SPONSOR OR FUNDING BODY:	Barratt East Scotland
CAPTION(S) FOR ILLUSTRS:	---
ADDRESS OF MAIN CONTRIBUTOR:	52 Elderpark Workspace, 100 Elderpark Street, Glasgow, G51 3TR
EMAIL ADDRESS:	Beth.spence@guard-archaeology.co.uk
ARCHIVE LOCATION (intended/deposited)	NMRS intended



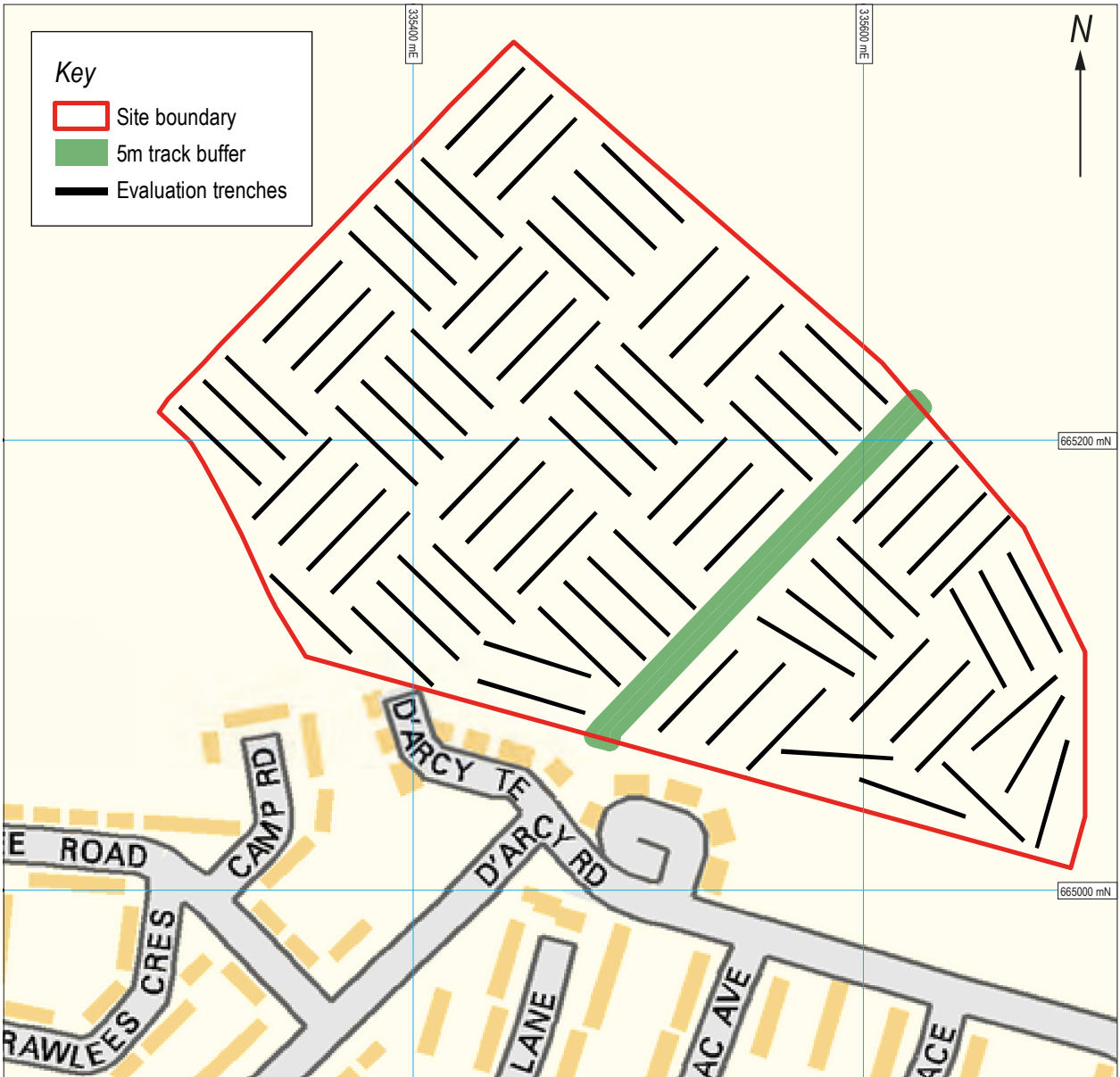
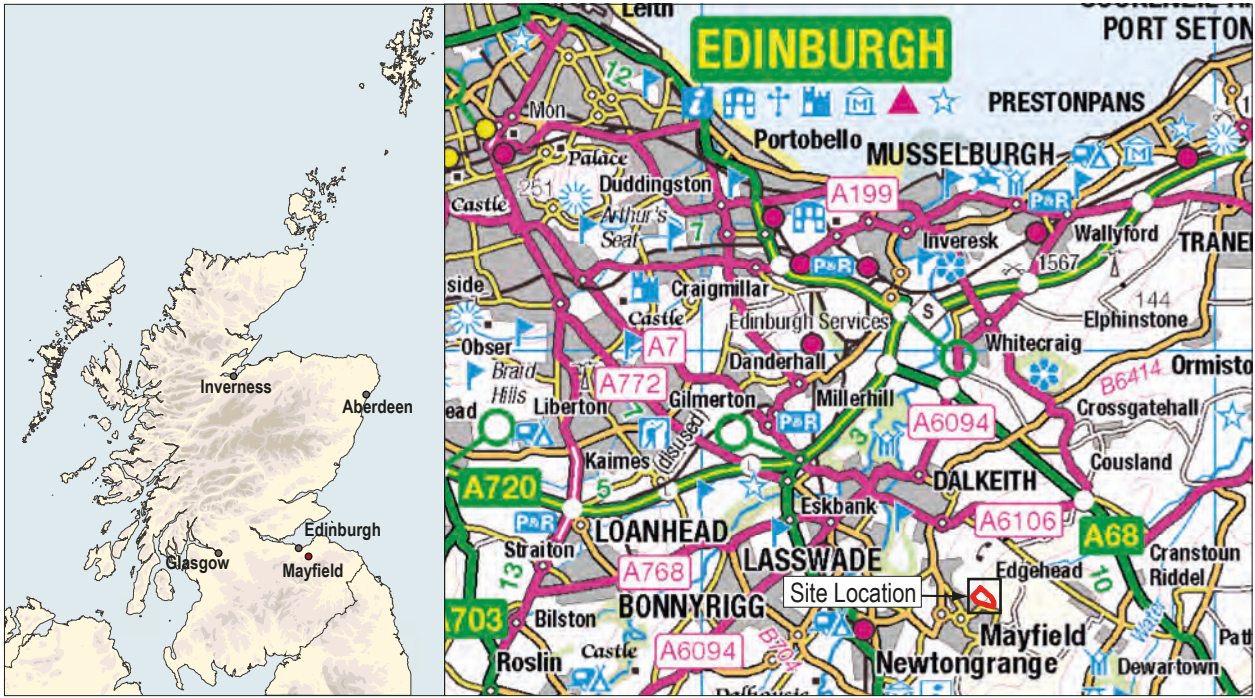
Appendix H: Written Scheme of Investigation

# OAK PLACE, MAYFIELD, MIDLOTHIAN

ARCHAEOLOGICAL EVALUATION

WRITTEN SCHEME OF INVESTIGATION

PROJECT 4348



**Key**

- Site boundary
- 5m track buffer
- Evaluation trenches

Figure 1:  
Site location.



## Executive Summary

- 1.1 This Written Scheme of Investigation forms the archaeological method statement for the archaeological evaluation of the Oak Place development area at Mayfield in Midlothian. This Written Scheme of Investigation will require to be approved by the local authority prior to the commencement of archaeological fieldwork.

## Introduction

- 2.1 This Written Scheme of Investigation (WSI) sets out the methodology for the archaeological mitigation works required for the development at Oak Place, Mayfield in accordance with the existing Planning Consent (Planning Reference: 13/00522/PAC), on behalf of BDW Trading Limited and Lord Ralph Kerr. In accordance with the agreement of the East Lothian Council Archaeology Service, Archaeological Advisers to Midlothian Council, the scope of work is a 10% archaeological evaluation, required in order to evaluate the presence, nature, significance and extent of any archaeological features within the development area.
- 2.2 This WSI outlines the programme of archaeological works that may be needed to mitigate the effects of the proposed development. It details the methodology to be employed in implementing Stage 1 archaeological works. The mitigation methodology to be employed during Stage 2 excavation and Stage 3 post-excavation analysis and publication, if required, will be specified in further WSI addendums. These WSI addendums, if required, will be submitted for the agreement of the Archaeological Advisers to Midlothian Council, prior to the commencement of any archaeological work. All phases of work will be funded by the developer as required by the Planning Authority.

## Site Location

- 3.1 The development area is centred on NT 3355 6651 and is located to the north of Oak Place on the eastern extent of Mayfield in Midlothian. The development site comprises two large enclosed fields and a smaller field amounting to 20.4 acres in area (Figure 1). The development area is bounded by existing housing to the south and west and fields to the north and east with a minor road leading to Lawfield Farm to the north.

## Archaeological Background

- 4.1 No known archaeological sites lie within the development boundary although a number of possible sites have been identified as cropmarks on aerial photographs in the immediate vicinity. These include a large double ditched circular enclosure that may be a fort at the farm cottages at Lawfield Farm and the remains of possible field boundaries. Given that this land has not previously been developed, there is potential, for the survival of hitherto undiscovered sub-surface archaeological remains.

## Aims and Objectives

- 5.1 The aims of the archaeological works is to:
- evaluate the presence, nature, significance and extent of any archaeological features within the development area, specifically focused on the two known archaeological sites.
- 5.2 The objectives are therefore to:
- Conduct an archaeological evaluation to evaluate the presence or absence of any archaeological remains, and their character, date and extent if surviving;
  - Submit a report to data structure level for agreement to the Archaeological Advisers to Midlothian Council, on completion of the evaluation;

- Submit, if excavation or post-excavation works are required, an accompanying project design and costing alongside the data structure report, which will outline arrangements for further excavation or post-excavation works.

## Methodology

- 6.1 All elements of the evaluation will undertaken in line with the following policies and guidelines of the Chartered Institute for Archaeologists (CIfA) of which GUARD Archaeology Ltd is a Registered Organisation.
  - By-laws: Code of Conduct (2014);
  - Standard and Guidance for archaeological field evaluation (2014).
- 6.2 A GUARD Archaeologist will photograph the development area and make a brief written description prior to the commencement of ground-breaking works.
- 6.3 The course of any existing services will first be surveyed. A minimum three metre buffer zone either side of each service will be marked on the ground. A Cat Scan will be used prior to the machine excavation of each trench.
- 6.4 The machine excavation of trenches amounting to 10% of the 20.4 acre development area will then follow and will be supervised at all times by an experienced GUARD Archaeologist. The evaluation trenches will comprise 81 trenches (each 50 m long and 2 m wide, amounting to 8,100 m<sup>2</sup> in total (Figure 1).
- 6.5 The machine excavator will be fitted with a c 2 m wide flat-bladed (toothless) ditching bucket.
- 6.6 The topsoil at each trench location will be removed in spits to the first archaeological horizon or, where none was found, to the natural subsoil. Any archaeological features encountered will be cleaned by hand by the on-site Archaeologists to determine their character and extent.
- 6.7 All potential archaeological features encountered during the trenching will be investigated by the on-site Archaeologists. All significant features including negative-cut features will be 25-50% excavated in order to determine their significance, date and function. Linear features will be 10 % excavated in order to determine their significant, date and function. A full record of excavated features will be made using a single context planning system using pro forma sheets, drawings and photographs. All archaeological features will be photographed and recorded at an appropriate scale. Sections will be drawn at 1:10, and plans at 1:20. All levels will be tied into Ordnance Datum and the trenches accurately located with the National Grid.
- 6.8 If potentially eighteenth century - modern agricultural features are identified (furrows, ditches, drains etc) these will be investigated to confirm their interpretation. As the full extent of such features is unlikely to be uncovered initially a 0.5 m section will be excavated across each feature to confirm dimensions, function and the presence and type of drain in use. Where groups of similar features are uncovered only a representative sample will be investigated (approximately 20% or 1 in 4).
- 6.9 All archaeological finds will be dealt with by the on-site Archaeologist. Finds and animal bone will be collected as bulk samples by context. Significant small finds will be three dimensionally located prior to collection. All finds will be processed to MAP2 type standards and subject to specialist assessment. Palaeo-environmental samples will also be taken where appropriate. If necessary, conservation of finds will be appraised to allow for specialist study.
- 6.10 A representative section will be recorded for each trench denoting depth of topsoil, any stratigraphy present and the nature of the soil. This information will be logged in the day book together with a sketch drawn to scale and a photographic record of deposits.
- 6.11 Each trench will be accurately surveyed using a Total Station or GPS and will be related to the Ordnance Survey Grid. A record of the full extent in plan of all archaeological deposits as revealed in the investigation will be made, either digitally or by hand, and related to the OS grid. In addition to archaeological features this will include recent agricultural features and changes in the subsoil. Where digital planning is used, the project archaeologists will ensure that a sufficient number of

points are taken on each feature to ensure an accurate representation of the site. A plan of each trench will be made and included in the report where appropriate.

- 6.12 Should significant archaeological remains be encountered by the evaluation, requiring more than the limited sampling outlined above, the remains will be largely left *in situ* pending the agreement of the client and the Archaeological Advisers to Midlothian Council on an appropriate excavation project design, in accordance with paragraph 2.2 above.
- 6.13 Should human remains be revealed by the excavation, the police, the client and the Archaeological Advisers to Midlothian Council will be informed immediately. Any human remains will be left *in situ*, pending the agreement of the police, the client and the Archaeological Advisers to Midlothian Council on an appropriate mitigation strategy.
- 6.14 On completion of the recording of the evaluation trenches, the backfilling of trenches will be undertaken by machine. No specialist backfilling is proposed, nor will the backfilling of trenches be supervised by the GUARD Archaeologist, unless the trenches contain archaeological remains. In these cases, the archaeological remains will be covered with terram sheets prior to backfilling operations.

## Report Preparation and Contents

- 7.1 A report detailing the results of the archaeological evaluation will be submitted to the client within two - four weeks of the completion of fieldwork and, subject to client approval, then submitted to the Archaeological Advisers to Midlothian Council. The report will take the form of a Data Structure Report and will contain an analysis of the results of the archaeological evaluation. The report will include a full descriptive text that will characterise any archaeological features encountered. It will also include plans and photographs at an appropriate scale showing the evaluation trenches and archiving lists of all drawings and photographs.
- 7.2 The report will include the following:
  - executive summary
  - a site location plan to at least 1:10,000 scale with at least an 8 figure central grid reference
  - OASIS reference number; unique site code
  - Planning Reference number
  - contractor's details including date work carried out
  - nature and extent of the proposed development, including developer/client details
  - description of the site history, location and geology
  - a site plan to a suitable scale and tied into the national grid so that features can be correctly orientated
  - context & feature descriptions
  - features, number and class of artefacts, spot dating & scientific dating of significant finds presented in tabular format
  - plans and section drawings of the features drawn at a suitable scale
  - initial assessment of relevant finds/samples if appropriate
  - discussion of the results of the archaeological evaluation
  - recommendations regarding the need for, and scope of, any further archaeological work, such as excavation, post-excavation analysis and publication
  - bibliography
- 7.3 At least two copies of the report will be prepared for the client and a further one including a digital PDF copy sent to the Archaeological Advisers to Midlothian Council.



- 7.4 The report will be presented in an ordered state and contained within a protective cover/sleeve or bound in some fashion. The report will be page numbered and supplemented with section numbering for ease of reference.

## Copyright

- 8.1 Unless otherwise agreed copyright for any report resulting from the archaeological work undertaken as part of the project will be deemed the intellectual property of GUARD Archaeology Limited.

## Publication

- 9.1 A summary of the project results will be submitted to *Discovery and Excavation in Scotland*. In the event of minor archaeological remains being encountered during the work, it is proposed that a comprehensive report submitted to *Discovery and Excavation in Scotland*, will form the final publication of the site. A copy of this will be included in the Data Structure Report.

## Archive

- 10.1 The archive for the project, including a copy of the report, will be submitted to the National Monuments Records for Scotland within three months of completion of all relevant work.
- 10.2 The online OASIS form at <http://ads.ahds.ac.uk/project/oasis/> will be completed within 1 month of completion of the work. Once the Data Structure Report has become a public document by submission to or incorporation into the SMR, the Archaeological Advisers to Midlothian Council will validate the OASIS form thus placing the information into the public domain on the OASIS website.

## Finds Disposal

- 11.1 The arrangement for the final disposal of any finds made in connection with the archaeological work, will be deposited in keeping with Scottish legal requirements as set out in the Treasure Trove Code of Practice published by the Scottish Government in December 2008. The laws relating to Treasure Trove and *Bona Vacantia* in Scotland apply to all finds where the original owner cannot be identified. This includes all material recovered during archaeological fieldwork. Accordingly, all assemblages recovered from archaeological fieldwork are claimed automatically by the Crown and must be reported to the Scottish Archaeological Finds Allocation Panel through its secretariat, the Treasure Trove Unit. In the event of the discovery of small finds, a filled-out copy of the form "Declaration of an Archaeological Assemblage from Fieldwork" and two copies of the pertinent Data Structure Report will be submitted to the Panel at the conclusion of the fieldwork. The Panel will then be responsible for recommending to the Queen's and Lord Treasurer's Remembrancer which museum should be allocated the finds. All artefacts will be temporarily stored by GUARD Archaeology until a decision has been made by the panel.

## Personnel and Liaison

- 12.1 The GUARD Archaeology team will comprise the following qualified and experienced GUARD archaeologists:
- Project Director (on-site Archaeologist): TBC
  - Additional field staff, if required, will be drawn from our team of experienced field staff
  - Finds and Environmental Support and Conservation: Aileen Maule
  - Illustrator: Gillian McSwan
  - Project Manager: Bob Will
- 12.2 The GUARD Archaeology Project Manager, Bob Will, will be the point of contact for the archaeological works. A full CV for individuals concerned can be made available on request.

## Monitoring

- 13.1 Once the proposed start date for the archaeological works has been confirmed the Archaeological Advisers to Midlothian Council will be informed and given the site mobile phone number prior to the start date so that monitoring visits can be arranged. It is envisaged that the archaeological evaluation will take 12 days to complete, including the backfilling of trenches.

## Health & Safety and Insurance

- 14.1 GUARD Archaeology Limited adheres to the guidelines and standards prescribed for archaeological fieldwork set down in the ClfA approved Health and Safety in Field Archaeology document. It is standard GUARD Archaeology policy, prior to any fieldwork project commencing, to conduct a risk assessment and to prepare a project safety plan, the prescriptions of which will be strictly followed for the duration of all archaeological fieldwork. Copies of the resultant project safety plan and of GUARD Archaeology Limited's Fieldwork Safety Policy Statement may be viewed upon request.
- 14.2 GUARD Archaeology Limited also possesses all necessary insurance cover, proofs of which may be supplied upon request.

**GUARD Archaeology Limited**  
**52 Elderpark Workspace**  
**100 Elderpark Street**  
**Glasgow**  
**G51 3TR**

**Tel: 0141 445 8800**

**Fax: 0141 445 3222**

**email: [info@guard-archaeology.co.uk](mailto:info@guard-archaeology.co.uk)**



**[www.guard-archaeology.co.uk](http://www.guard-archaeology.co.uk)**