



**Cammo HSG 20
Data Structure Report
Project 4757**

Cammo HSG 20 Data Structure Report

On behalf of: CALA Management Limited / David Wilson East Scotland

NGR: NT 18135 74464 (centred)

Project Number: 4757

Report by: Jamie Henderson

Illustrations: Jennifer Simonson

Project Manager: Warren Bailie

DRAFT 22/06/18	Warren Bailie Project Manager	FINAL 27/06/18	John Atkinson Managing Director
			

*This document has been prepared in accordance
with GUARD Archaeology Limited standard operating procedures.*

GUARD Archaeology Limited
52 Elderpark Workspace
100 Elderpark Street
Glasgow
G51 3TR

Tel: 0141 445 8800
Fax: 0141 445 3222
email: info@guard-archaeology.co.uk



www.guard-archaeology.co.uk

Contents

Executive Summary	5
Introduction	5
Site Location	5
Archaeological Background	5
Aims, Objectives and Scope	6
Fieldwork Methodology	6
Metal Detecting Survey	6
Archaeological Evaluation	7
Results	8
Discussion	12
Recommendations	12
Acknowledgements	12
Appendices	15
Appendix A: Sources Consulted	15
Appendix B: Trench Sheets	15
Appendix C: List of Contexts	24
Appendix D: List of Finds	25
Appendix E: List of Photographs	25
Appendix F: Discovery and Excavation Scotland	42
Appendix G: Written Scheme of Investigation	43

List of Figures

Figure 1: Site and Trench location plan	4
Figure 2: Trench location plan	8
Figure 3: Metal detecting finds location plan	11

List of Plates

Plate 1: Section of deep alluvial deposit in trench 011	9
Plate 2: Section of trench 022	9
Plate 3: Plan of trench 030	9
Plate 4: Section through Rig and Furrow (007) in trench 029	9
Plate 5: Oblique section through alluvial deposit in trench 069	9
Plate 6: Section through deep topsoil in 072 with field drain	9
Plate 7: Plan shot of trench 080 on high ground along road side	10
Plate 8: Plan shot of trench 089 with Rig and furrow	10
Plate 9: Alluvial deposit in trench 120	10
Plate 10: Plan of trench 147 along roadside	10
Plate 11: Site topography	10
Plate 12: Bulk finds from metal detecting	10
Plate 13: Coins from metal detecting, SF12,13 and 3	12
Plate 14: Pocket watch from metal detecting, SF11	12
Plate 15: Handles from metal detecting, SF9 and 14	12

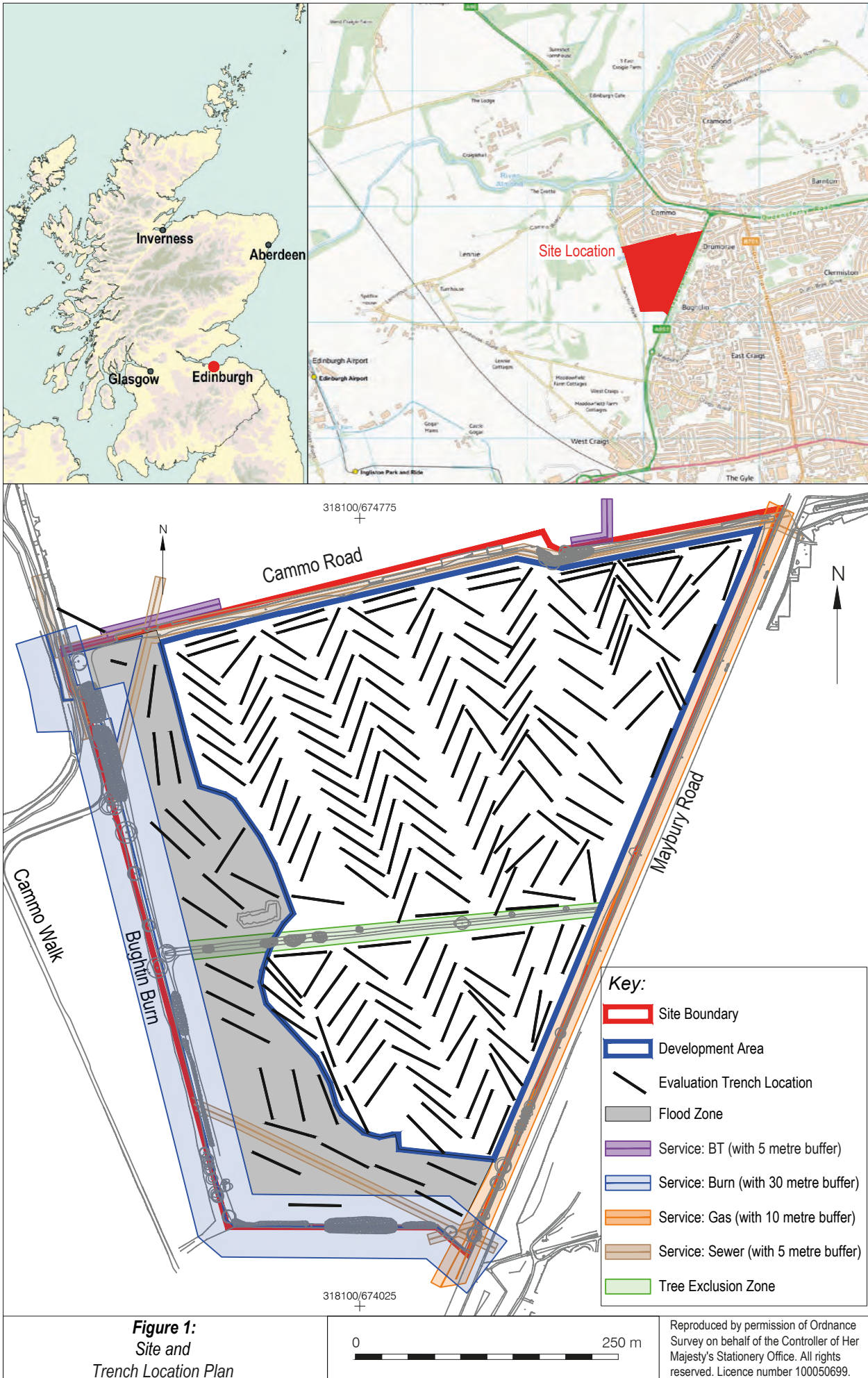


Figure 1:
Site and
Trench Location Plan

0 250 m

Reproduced by permission of Ordnance Survey on behalf of the Controller of Her Majesty's Stationery Office. All rights reserved. Licence number 100050699.

Executive Summary

- 1.1 This data structure report (DSR) sets out the archaeological results for the archaeological evaluation of the proposed Cammo HSG 20 development, Maybury Road, Edinburgh. The work was undertaken by GUARD Archaeology Limited on behalf of CALA Management Limited and David Wilson East Scotland between the 23rd of April and the 7th of June 2018. A total of 209 trenches were excavated across the development area; aside from rig and furrow features and field drains indicating past use of the site for agricultural purposes. A total of 173 metal artefacts were uncovered during the metal detecting survey. The assemblage was predominated by iron agricultural discard from machinery this accounting for 160 pieces of the assemblage with 13 retained as small finds including a pocket watch, and various copper alloy pieces and coins.

Introduction

- 2.1 This DSR sets out the results for the archaeological evaluation for the proposed construction of a residential development supported by ancillary mixed uses including associated works and landscaping (Planning reference 18/01755/FUL). These archaeological works were undertaken to establish the presence, extent and nature of any significant archaeological remains. Following consultation with City of Edinburgh Council Archaeological Service (hereafter CECAS), a 5% evaluation of the 4.46 ha flood zone, a 10% evaluation of the remaining 18.61 ha of the site, plus a metal detecting survey of each trench prior to excavation, were carried out.
- 2.2 This DSR outlines the programme of archaeological works that were needed to mitigate the effects of the development. It details the methodology that was employed in implementing the Stage 1 archaeological works.
- 2.3 Both the fieldwork and report were conducted following Chartered Institute for Archaeologists (CIfA) guidance and standards of which GUARD Archaeology Limited is a Registered Organisation (By-laws: Code of Conduct, 2014). An OASIS entry has also been produced for this project (Reference: guardarc1-319561).

Site Location

- 3.1 The over-all development site is located at Cammo HSG 20, Maybury Road, Edinburgh (NGR: centred at NT 18111 74422). It comprises of a 28.44 ha area divided into two fields currently used as agricultural land. The site is bounded by Cammo Grove and Cammo Gardens to the north, A902 Maybury Road to the east, agricultural land and Bughtlin Burn to its south and west and Cammo Country park at its north-west corner.

Archaeological Background

- 4.1 An Environmental Impact Assessment (EIA) revealed that although no archaeological remains are recorded within the development, prehistoric and post-medieval activity is known in its vicinity.
- 4.2 To the west of the Site, within the Cammo Garden and Designed Landscape, the Cammo Scheduled Monument, a Prehistoric standing stone (SM 6189) is located to the southeast of the ruins of Cammo House (LB. 28037). The standing stone comprises of a probable Late Neolithic or Bronze Age stone, standing to a height of 1.4m at an elevation of 50m OD. This elevated height would have meant that the position of the stone would have commanded extensive views over the surrounding landscape, however the stone is now situated within mature woods as part of the designed landscape, obscuring these views.
- 4.3 To the north of the site near Braehead Park at Barton, the NRHE noted a cropmark of a possible pit-alignment (NRHE. NT 17 NE 269).
- 4.4 The Schedule Monument of Cramond Roman fort and settlement (SM. 25426) located on the coast of the Firth of Forth, is approximately 2 km north-east of the development.

- 4.5 A number of post-medieval sites, mostly associated with Cammo Estate are noted west of the development site. They include: Cammo House (LB 28037) a 17th century Category B Listed Building, 19th century B Listed stable block (LB. 30259), the piggery to the west and the C Listed, 18th century walled garden (LB. 30261). The historic Cammo Garden and Designed Landscape (GDL 00081) is also located to the west; B Listed, 19th century water tower (LB 28039) is a key feature of this designed landscape as Cammo Estate Knoll (LB 47715), a B listed stone dyke encircling the crest of a low natural hillock.
- 4.6 As the development area comprises agricultural fields that have not been occupied intensively since cartographic records were made, there is a potential for archaeological remains, particularly prehistoric archaeological remains, to survive buried within the development area.

Aims, Objectives and Scope

- 5.1 The aim of the archaeological evaluation was to identify:
- the extent and nature of known archaeological features within the development area;
 - as yet unknown archaeological features and deposits within the development area.
- 5.2 The objectives were therefore to:
- Conduct an archaeological metal detecting survey on each trench location prior to excavation to establish the presence or absence of metal archaeological artefacts;
 - Conduct an archaeological evaluation within the development area to establish the presence or absence of any archaeological remains, and their character, date and extent if surviving;
 - Submit a report to data structure level for agreement of CECAS, acting on behalf of the Planning Authority, on completion of the archaeological fieldwork, which includes an outline of the scope of any further excavation works should any significant archaeology be encountered.
- 5.3 The scope of the archaeological evaluation will establish:
- That if the archaeological evaluation encountered no significant archaeological remains, no further archaeological fieldwork will be required for this development.

Fieldwork Methodology

- 6.1 All work was conducted in line with the following standards and guidance of the Chartered Institute for Archaeologists (CIfA), of which GUARD Archaeology is a Registered Organisation:
- Code of conduct (2014);
 - Standard and guidance for archaeological field evaluation (2014);
 - Standard and guidance for the creation, compilation, transfer and deposition of archaeological archives (2014).

Metal Detecting Survey

- 6.2 An initial metal detecting survey of each trench, across the 28.44 ha development area, prior to excavation was undertaken in order to establish the presence or absence any metal archaeological artefacts that survive within the topsoil. No metal was discriminated during the survey. Where a positive signal was found a discrete hole was excavated into turf and topsoil to reveal the object. Where items were found to lie below topsoil level, and therefore within an

earlier and/or undefined context, the item position was surveyed and remained *in situ* pending trenching. All finds from topsoil level, other than those which are demonstrably modern, were recorded, plotted using GPS and recovered for processing and analysis.

- 6.3 Finds that were detected during the metal detecting survey were surveyed in by sub-metre GPS and recovered using stratigraphically controlled key-hole excavation for identification and further study if necessary. All finds collected during metal detecting were assessed for identification by a suitably qualified and experienced battlefield archaeologist.

Archaeological Evaluation

- 6.4 The metal detecting survey was followed by an archaeological evaluation of the available area within the development. The available area for evaluation was 18.61 ha of the area outwith the flood zone, minus any service buffers (Figure 1) and 4.46 ha within the flood zone, accounting for a 30 m exclusion zone along the Bughtlin Burn. The evaluation comprised the machine excavation of trenches amounting to 10% of the 18.61 ha area (18,610 m²), and 5% of the 4.46 ha flood zone (2,229 m²) (Figure 1). This evaluated the presence, nature, significance and extent of any archaeological features.
- 6.5 The evaluation trenches across the area outwith the flood zone comprised 185 trenches measuring 50 m long and one 55 m long, all measuring 2 m wide. The evaluation across the flood zone comprised 22 trenches measuring 50 m long and one 15 m long, all measuring 2 m wide (Figure 1).
- 6.6 All machine excavation of trenches was supervised by a GUARD Archaeologist. The machine excavator was fitted with a c 2 m wide flat-bladed (toothless) ditching bucket.
- 6.7 The topsoil at each trench location was removed in spits to the first archaeological horizon or, where none was found, to the natural subsoil. Any archaeological features encountered was cleaned by hand by the on-site Archaeologist to determine their character and extent.
- 6.8 Any significant archaeological features encountered was dealt with by the on-site Archaeologist. Where negative-cut features were encountered, a representative sample of 25-50% was excavated in order to determine their significance, date and function. A full record of excavated features was made using a single context recording system using pro forma sheets, drawings and photographs. All archaeological features were photographed and recorded at an appropriate scale. Sections were drawn at 1:10, and plans at 1:20. All trenches were accurately surveyed using a sub-metre GPS and located within the National Grid.
- 6.9 All archaeological finds were dealt with by the on-site Archaeologist. Finds and animal bone were collected as bulk samples by context. Significant small finds were three dimensionally located prior to collection. All finds were processed to MAP2 type standards and subject to appropriate specialist assessment. If necessary, conservation of finds will be appraised to allow for specialist study.
- 6.10 All excavated feature fills and horizons were sampled as appropriate, using bulk soil samples, for palaeo-environmental evidence.
- 6.11 A representative section was recorded denoting depth of topsoil, any stratigraphy present and the nature of the soil. This information was logged in the day book together with a sketch drawn to scale and a photographic record of deposits.
- 6.12 On completion of the recording of each evaluation trench, it was backfilled by machine that same day. No specialist backfilling was carried out.

Results

7.1 The results should be read with reference to the records in Appendices B-E, and Figures 2-3 and Plates 2-11. A total of 209 trenches, of the aforementioned dimensions were machine excavated under archaeological supervision across the development area. However, two trenches (11 and 12) in the flood zone were found to have excessive levels of alluvial deposits, therefore in consultation with CECAS, the depth of the alluvial deposit was tested at both ends of these trenches by a 2 m slot.

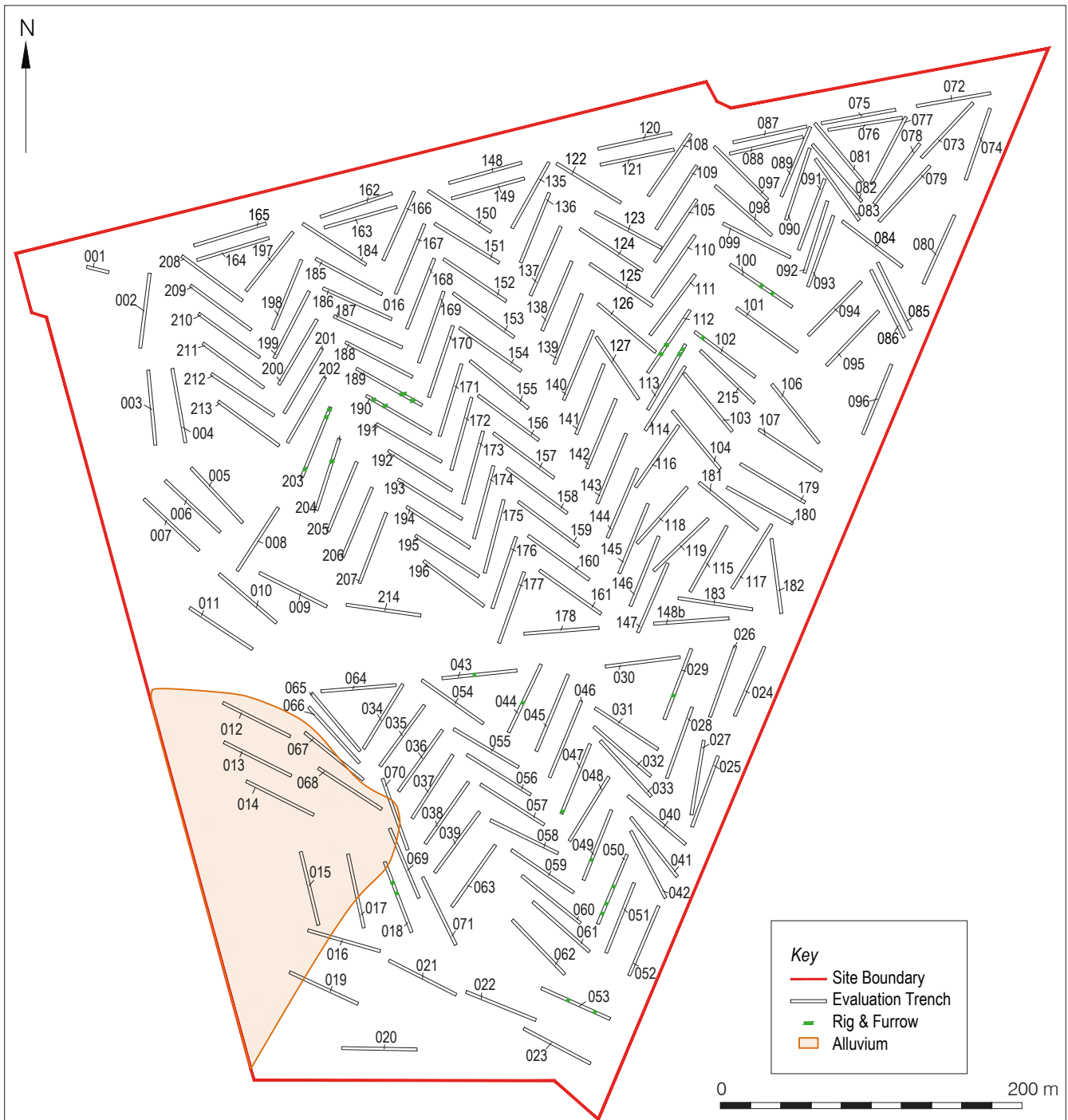


Figure 2: Trench location plan

7.2 The topsoil was generally a mid-grey brown silty sand (001) and while along the northern edge of the development it could measure up to 1.5m thick, it was generally 0.4 m to 0.5 m thick across the site. The topsoil overlay an orangey brown silty sand natural subsoil with inclusions of gravel and sub-rounded stones (002).

- 7.3 Post-Medieval rig and furrow was uncovered and recorded in seventeen trenches running predominantly along the cardinal points. As well as this the majority of trenches contained either ceramic or rubble field drains on a variety of alignments. No other significant archaeological features were uncovered within the remaining trenches.
- 7.4 Evidence for a palaeochannel along a similar line to the Boughtlin Burn was apparent along the west edge of the site. The degree of alluvium, extended to 140 m from the current burn edge (Figure 2), and up to 1.8 m thick in the trenches where it was tested to full depth. This suggests that a much larger water course extended along the west edge of this site in the past.



Plate 1: Section of deep alluvial deposit in trench 011



Plate 2: Section of trench 022



Plate 3: Plan of trench 030



Plate 4: Section through Rig and Furrow (007) in trench 029



Plate 5: Oblique section through alluvial deposit in trench 069



Plate 6: Section through deep topsoil in 072 with field drain



Plate 7: Plan shot of trench 080 on high ground along road side



Plate 8: Plan shot of trench 089 with Rig and furrow



Plate 9: Alluvial deposit in trench 120



Plate 10: Plan of trench 147 along roadside



Plate 11: Site topography



Plate 12: Bulk finds from metal detecting

- 7.5** The metal detecting revealed a total of 173 metal artefacts, of which 160 of them were modern agricultural metal which were assessed for the possibility of more diagnostic finds (Plate 12) In addition to the 13 retained finds from the metal detecting, one shard of eighteenth century dark green bottle glass was recovered from rig and furrow feature 007 and two pieces of natural flint (SF 001 and SF 015).

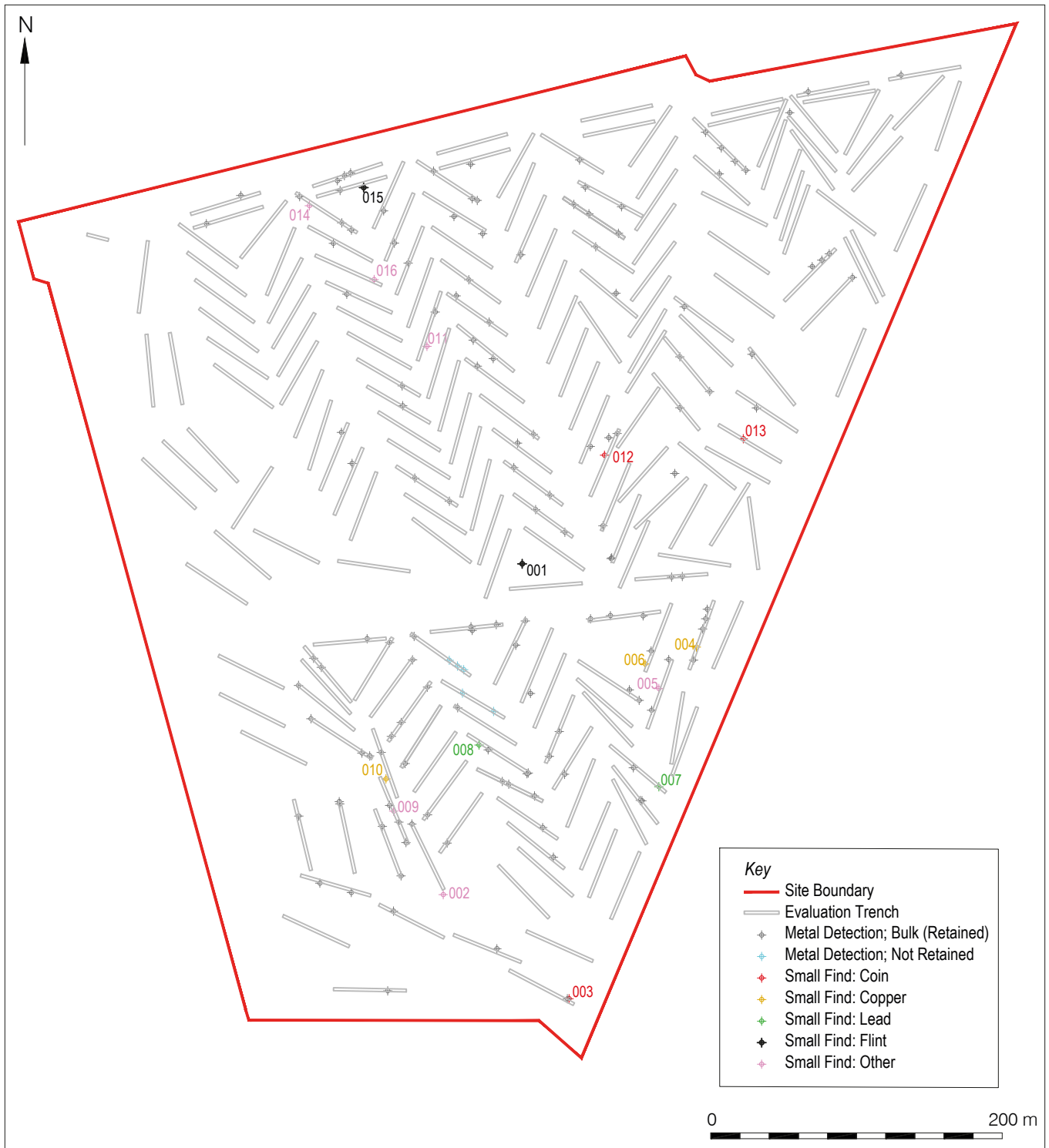


Figure 3: Metal detecting finds location plan

7.6 The retained metal finds (Plates 13-15) included three possible coins, two of which have milled edges (SF 003 and SF 013) and the third coin SF 012 being thinner with no clear milling suggesting a possible earlier date; the coins were all heavily worn and corroded. A pocket watch SF 011 was also found, this appeared to have an aluminium face with numbers rather than roman numerals. There was a small 15mm button SF 005 with a faded inscription around the rim of one face. The flattened end of a pewter serving spoon SF 016 was also recovered. Two pieces of lead were recovered, one cylindrical cut to a taper at one end SF 007 of it and the other a 34mm diameter disc with small dents marking the middle, possibly a weight weighing 51.3g SF 008. Three brass items were also recovered, these consisted of a machine plate SF 004, a small 15mm button

loop SF 006 and a 60mm diameter ring SF 010, possibly from a harness. Lastly, two copper alloy objects were recovered; a small round handle SF009 and a lid SF 014 with orange paint on its outer surface.



Plate 13: Coins from metal detecting, SF12, 13 and 3



Plate 14: Pocket watch from metal detecting, SF11



Plate 15: Handles from metal detecting, SF9 and 14

Discussion

- 8.1 The evaluation revealed the site to be largely archaeologically sterile, aside from the rig and furrow. As was evident from the alluvium recorded in the trenches within the flood zone, this area has been susceptible to flooding which would have deterred settlement in this area from the prehistoric era through to the present day. Although no archaeology was apparent within the alluvial material tested, the alluvium would contain information on the evolution of the local environment over time. Analysis of this sequence could provide information on the formation, and key periods, of the site's history. Such information would be useful in comparison with other fluvial/terrestrial locations across the Edinburgh area. The finds from the evaluation and metal detecting probably date from the eighteenth to nineteenth century, demonstrating a lack of evidence of settlement in the area prior to this. The presence of rig and furrow and regular field drains suggest the land has been predominantly used as agricultural land in most recent centuries, and has undergone a series of improvement works in the past to facilitate this use.

Recommendations

- 9.1 The archaeological evaluation revealed that, beyond the rig and furrow features, no archaeologically sensitive deposits or features exist within the development area. However, CECAS have recommended further minor and localised work in relation to the alluvial deposits on site with the aim of reconstructing past changes in the environment. An agreed conservation plan to address the retained metal artefacts will also be required by CECAS to satisfy the planning condition.
- 9.2 GUARD Archaeology would stress that these recommendations are intended for guidance only. While the recommended mitigation strategy was developed following consultation with CECAS, final decisions on the nature and extent of any future archaeological work rest with the planning authority.

Acknowledgements

- 10.1 GUARD Archaeology Limited would like to thank CALA Homes Limited and David Wilson East Scotland for their assistance prior to, during and after the works on site. Plant was provided by McMillan Plant Limited. The archaeologists on site were Juan Ignacio De Vicente, Jamie Henderson, Alan Hunter- Blair, Kenneth Green and Dave McNicol. Technical support was provided by Clark Innes, Aileen Maule and Jen Cochrane. Illustrations were by Jennifer Simonson. This report was desk top published by Gillian Sneddon. The project was managed for GUARD Archaeology Limited by Warren Baillie.

**Cammo Fields
Data Structure Report**

Section 2: Appendices



www.guard-archaeology.co.uk

Appendices

Appendix A: Sources Consulted

Rennie C., 2018 'Cammo fields, Edinburgh: Archaeological Desk-based Assessment'. GUARD Project 4852. Unpublished report

<http://maps.nls.uk/>

<http://pastmap.org.uk/>

Appendix B: Trench Sheets

Tr No	Length (m)	Width (m)	Depth (m)	Topsoil/Overburden	Subsoil	Details
1	15	2	0.4	Mid brown silty clay	Orangish brown silty sand, manganese texture.	No archaeology. Field drain with modern glass
2	50	2	0.4	Mid brown silty clay	Orangish brown silty sand, manganese texture.	No archaeology
3	50	2	0.55	Mid brown silty clay	Orangish brown silty sand, manganese texture.	No archaeology. Occasional plough strikes
4	50	2	0.4	Mid brown silty clay	Orangish brown silty sand, manganese texture.	No archaeology. 3 rubble field drains at different angles
5	50	2	0.5	Mid brown silty clay	Orangish brown silty sand, manganese texture.	No archaeology. 3 rubble and 4 ceramic field drains
6	50	2	0.7	Greyish brown silty clay	light Orangish brown silty sand, gravel pockets	No archaeology
7	50	2	0.7	Mid brown silty clay	Orangish brown silty sand, stone holes	No archaeology
8	50	2	0.45	Mid greyish brown silty clay	Orangish brown silty clay	No archaeology. 4 rubble field drains
9	50	2	0.95	Mid brown silty clay, over 0.68m of well compact, orangy grey clay, alluvial deposit	Orangish brown with black patches sand.	No archaeology. Ceramic field drains
10	50	2	1.05	Mid brown silty clay over 0.7m of compact orangy brown clay, alluvial deposit (003)	Light grey slightly silty sand	No archaeology. 4 ceramic field drain.
11	50	2	0.35	Mid brown silty clay on top of <1.4m of well compact, orangy brown clay, alluvial deposit (003)	Natural not reached	No archaeology, 2 clay and 1 rubble drain both ends of the trench tested for depth of natural wich was greaer than 1.4 m below the top soil
12	50	2	0.8	Mid brown silty sand on top of >2m of compact blackish brown clay, alluvial deposit (003)	Orangish brown sandy gravel	No archaeology. 1 rubble field drain. East end tested to a depth of 2 m with out natural
13	50	2	0.5	Mid brown silty sand	Orangish brown silty sand, gravel	No archaeology. 4 field drains
14	50	2	0.8	Mid brown silty clay	Orangish brown clay sand.	No archaeology. 2 field drains.
15	50	2	0.6	Mid brown silty clay	Orangish brown sandy clay.	No archaeology. 3 field drains
16	50	2	0.5	Mid brown silty clay	Orangish brown clay sand.	No archaeology. 2 rubble field drains
17	50	2	0.4	Mid brown silty sand	Orangish brown silty clay.	No archaeology. 2 field drains.

Tr No	Length (m)	Width (m)	Depth (m)	Topsoil/Overburden	Subsoil	Details
18	50	2	0.5	Mid brown silty clay on top of 0.4m of greyish bure alluvial deposit (003)	Orangish brown silty sand, gravel bands.	No archaeology. 2 field drains.
19	50	2	0.5	Mid brown silty clay	Orangish brown silty sand.	No archaeology. 2 ceramic field drains
20	50	2	0.5	Mid brown sandy clay.	Orangish brown silty clay.	No archaeology. 2 field drains.
21	50	2	0.35	Mid brown silty sand	Orangish brown silty clay.	No archaeology. 1 field drain
22	50	2	0.5	Mid brown silty clay	Dark- mid orangish brown silty clay with bands of silty sand	No archaeology
23	50	2	0.3	Mid brown silty sand	Orangish brown silty sand with silty clay bands	1 modern dumping pit containing drain wood
24	50	2	0.7	Mid light brown sandy clay	Mid orangish brown silty clay.	No archaeology. 3 rubble drain
25	50	2	0.5	Mid orangish brown silty sand	Orangish brown silty sand, gravel pockets	No archaeology. 2 rubble drains
26	50	2	0.8	Grey brown silty sand	orangish brown silty clay.	No archaeology. 3 field drains
27	50	2	0.5	Mid greyish brown silty clay	Mid -dark orangish brown silty clay	No archaeology. 4 field drains
28	50	2	0.5	Greyish brown silty clay	Dark orangish brown silty clay.	No archaeology. 3 rubble field drains
29	50	2	0.5	Mid brown silty sand	Orangish brown silty clay	No archaeology. 2 Rig and Furrow
30	50	2	0.6	Mid brown silty clay	Orangish brown sandy silt with bands of sandy gravel.	No archaeology. 1 Rig and Furrow
31	50	2	0.5	Mid brown silty sand	Orangish brown with bands of yellow brown silty clay.	No archaeology. 3 field drains
32	50	2	0.6	Mid grey brown silty sand	Orangish brown silty clay.	No archaeology. 4 field drains
33	50	2	0.7	Mid greyish brown silty clay	Orangish brown silty clay	No archaeology. 3 field drains
34	50	2	0.8	Greyish brown silty clay.	Orangish brown silty sand with silty clay bands.	No archaeology. 1 field drain
35	50	2	0.7	Greyish brown silty sand.	Orangish brown with grey bands silty sand.	No archaeology. 1 field drain
36	50	2	0.5	Greyish brown silty sand.	Orangish brown silty sand.	No archaeology.
37	50	2	0.5	Greyish brown silty sand. With (003) greyish blue clay alluvial deposit 0.2m.	Orangish brown silty sand.	No archaeology
38	50	2	0.5	Greyish brown silty sand. With (003) greyish blue clay alluvial deposit 0.2m deep.	Orangish brown silty sand.	No archaeology. 2 field drains.
39	50	2	0.5	Greyish brown silty sand	Orangish brown silty sand.	No archaeology. 2 field drains.
40	50	2	0.6	Mid greyish brown silty clay	Orangish brown silty clay	No archaeology.3 field drains
41	50	2	0.5	Greyish brown silty sand	Orangish brown silty clay	No archaeology.3 field drains
42	50	2	0.75	Greyish brown silty sand	Orangish brown silty clay	No archaeology.3 field drains

Tr No	Length (m)	Width (m)	Depth (m)	Topsoil/Overburden	Subsoil	Details
43	50	2	0.45	Mid greyish brown silty clay	Orangish brown silty clay	No archaeology. 1 Rig and Furrow, 2 field drains
44	50	2	0.8	Greyish brown silty clay	Orangish brown silty clay	No archaeology. 1 R&F, 3 field drains
45	55	2	0.9	Greyish brown silty clay. With (003) greyish blue clay alluvial deposit 0.6m deep.	Orangish brown silty clay	No archaeology. 3 field drains.
46	50	2	0.95	Greyish brown silty clay. With (003) greyish blue clay alluvial deposit 0.65m deep.	Orangish brown silty clay	No archaeology. 3 field drains, 1 R&F
47	50	2	0.6	Greyish brown silty clay	Orangish brown silty clay	No archaeology. 3 field drains, 1 R&F
48	50	2	0.5	Greyish brown sandy clay	Orangish brown silty clay	No archaeology. 4 field drains
49	50	2	0.77	Greyish brown silty clay. With (003) greyish blue clay alluvial deposit 0.5m deep.	Orangish brown silty clay	No archaeology. 3 field drains, 1 R&F
50	50	2	0.52-0.8	Greyish brown silty clay	Orangish brown gravel sandy clay	No archaeology. 3 R&F, 2 field drain
51	50	2	0.4-0.6	Greyish brown silty clay	Orangish brown sandy gravelly clay	No archaeology
52	50	2	0.42	Greyish brown silty clay	Orange yellow sand, gravel and clay	No archaeology. Poss. Small sub-circular pit
53	50	2	0.46	Greyish brown silty clay	Pale orange brown clay, sand and gravel	No archaeology. " Rig and Furrow, 1 tile drain
54	50	2	0.5	Greyish brown silty sand	Orangish brown silty clay with gravel patches	No archaeology, 2 field drains and one modern GI trench
55	50	2	0.55	Greyish brown silty clay	Orangish brown silty clay	No archaeology. 2 field drains.
56	50	2	0.5	Greyish brown silty clay	Orangish brown silty sand.	No archeology. 2 field drain
57	50	2	0.45	Greyish brown silty sand	Orangish brown silty sand.	No archeology. 2 field drain
58	50	2	0.6	Greyish brown silty sand	Orangish brown silty clay	No archeology. 2 field drain
59	50	2	0.9	Greyish brown silty sand. With (003) greyish blue clay alluvial deposit 0.4m deep.	Orangish brown silty clay	No archeology. 2 field drain
60	50	2	1	Greyish brown silty clay. With (003) greyish blue clay alluvial deposit 0.8m deep.	Orangish brown silty sand.	No archeology. 2 field drain. 1 Rig and Furrow
61	50	2	0.47	Greyish brown silty sand	Orangish brown gravelly clay	No archaeology, 1 tile drain
62	50	2	0.57	Greyish brown silty sand	Pale yellow brown gravelly clay	No archaeology. 1 tile drain
63	50	2	0.7	Greyish brown silty clay	Orangish brown silty clay	No archaeology. 2 field drains
64	50	2	0.6	Greyish brown silty sand	Orangish brown silty sand.	No archaeology.
65	50	2	0.5	Greyish brown silty sand	Orangish brown silty sand.	No archaeology. 2 fields drain and a test pit

Tr No	Length (m)	Width (m)	Depth (m)	Topsoil/Overburden	Subsoil	Details
66	50	2	0.7	Greyish brown silty sand	Orangish brown silty sand.	No archaeology. 1 field drain
67	50	2	0.5	Greyish brown silty sand	Orangish brown silty clay	No archaeology. 1 field drain
68	50	2	0.3	Greyish brown silty sand	Greyish brown silty sand	No archaeology.
69	50	2	0.9	Greyish brown silty sand. With (003) greyish blue clay alluvial deposit 0.6m deep.	Orangish brown silty clay	No archaeology. 2 fields drain
70	50	2	0.8	Greyish brown silty clay. With (003) greyish blue clay alluvial deposit 0.4m deep.	Orangish brown silty clay	No archaeology. 1 field drain
71	50	2	0.7	Greyish brown silty sand	Greyish brown silty sand	No archaeology.
72	50	2	1.35	Greyish brown silty clay	Orangish brown silty clay	No archaeology. 6 field drains
73	50	2	0.3	Greyish brown silty clay	Orangish brown gravelly clay	No archaeology. 3 field drains
74	50	2	0.5	Greyish brown silty clay	Orangish brown silty clay	No archaeology. 2 fields drain
75	50	2	0.5	Greyish brown silty clay	Orangish brown silty clay	No archaeology. 3 field drains
76	50	2	0.4	Moderate to well compact, greyish brown silty clay	Compact, orangy brown silty clay with sub rounded stone	No archaeology, 3 field drains
77	50	2	0.4	Moderate to well compact, greyish brown silty clay	Compact, orangy brown silty clay with sub rounded stone	No archaeology, 5 field drains
78	50	2	0.4	Moderate to well compact, greyish brown silty sand	Compact, orangy brown silty sand with gravel pockets and sub rounded stone	No archaeology, 5 field drains
79	50	2	0.7	Well compact, greyish brown, silty clay	Well compact, orangy brown, silty sand with stone and gravel	No archaeology, 4 field drains
80	50	2	0.6	Well compact, greyish brown, silty sand	Well compact, orangy brown, silty sand with occasional gravel pockets	No archaeology, 2 field drains
81	50	2	0.4	Well compact, greyish brown clayish silt	Moderately compact, orangy brown sandy clay with frequent sub rounded stone	No archaeology, 2 field drains
82	50	2	0.4	Well compact, greyish brown silty clay	Well compact dark orangy brown, silty clay with sub rounded stone	No archaeology, 2 field drains
83	50	2	0.5	Well compact, greyish brown, silty clay	well compact, mottled orangy brown silty clay with sub rounded stone	No archaeology, 2 field drains
84	50	2	0.5	Well compact, greyish brown, silty sand	Well compact, orangy brown, silty sand with sub rounded stone	No archaeology, 2 field drains
85	50	2	0.3	Well compact, greyish brown, silty sand	Well compact, orangy brown, silty sand with sub rounded stone	No archaeology, 1 field drain
86	50	2	0.3	Moderately compact, greyish brown, silty sand	Well compact, orangy brown, silty sand with sub rounded stone	No archaeology, 1 field drain

Tr No	Length (m)	Width (m)	Depth (m)	Topsoil/Overburden	Subsoil	Details
87	50	2	0.6	Well compact, greyish brown, silty clay	Well compact, light greyish brown, silty clay	No archaeology, 5 field drains
88	50	2	0.5	Well compact, greyish brown, sandy clay	Well compact, orangy brown, silty clay with occasional sub rounded stone	No archaeology, 3 field drains
89	50	2	0.5	Well compact, greyish brown, sandy clay	Well compact, orangy brown, silty clay with occasional sub rounded stone	No archaeology, 3 field drains
90	50	2	0.5	Moderately compact, greyish brown, silty sand	Well compact, orangy brown, silty sand with sub angular stone	No archaeology, 3 field drains
91	50	2	0.6	Moderate to loose, greyish brown, silty sand	Well compact, yellowish brown, silty sand	No archaeology, 3 field drains
92	50	2	0.4	Moderately compact, greyish brown, silty sand	Well compact, orangy brown, silty sand with gravel bands	No archaeology, 4 field drains
93	50	2	0.6	Well compact, orangy brown, silty sand	Well compact orangy brown, silty sand with gravel bands	No archaeology, 3 field drains
94	50	2	0.4	Moderately compact, greyish brown, silty sand	Moderately compact, orangy brown silty sand with frequent sub rounded stone	No archaeology, 1 field drain
95	50	2	0.7	Well compact greyish brown, silty clay	Well compact orangy brown, silty clay with occasional gravel	No archaeology, 1 field drain
96	50	2	0.6	Moderately compact, greyish brown, silty sand	Well compact, orangy brown, silty clay with occasional sub rounded stone	No archaeology
97	50	2	0.5	Well compact, orangy brown, silty clay	Well compact, orangy brown silty clay	No archaeology, 6 field drains
98	50	2	0.4	Moderately compact, greyish brown, sandy clay	Well compact, orangy brown, silty sand	No archaeology
99	50	2	0.4	Moderately compact, greyish brown, silty sand	Well compact, orangy brown, silty sand with sub rounded stone	No archaeology, 2 field drains
100	50	2	0.35	Moderately compact, greyish brown, silty sand	Well compact, orangy brown, silty sand with sub rounded stone	No archaeology, 2 field drains
101	50	2	0.3	Moderately compact, greyish brown, silty sand	Moderately compact, orangy brown, silty sand with sub rounded stone	2 Rig and Furrows
102	50	2	0.6	Moderately firm, greyish brown, silty sand	Well compact, orangy greyish brown, silty sand with sub rounded stone	1 Rig and Furrow and 5 field drains
103	50	2	0.3	Moderately compact, greyish brown, silty sand	Moderately firm, orangy brown, silty sand with sub angular stone	2 Rig and Furrows and 1 field drain
104	50	2	0.3	Well compact, greyish brown, silty clay	Well compact orangy brown, silty clay	1 Rig and Furrow and 1 field drain
105	50	2	0.4	Well compact, greyish brown, silty sand	Well compact, dark orangy brown, sandy clay with sub rounded stone	No archaeology
106	50	2	0.3	Moderately compact, greyish brown, silty clay	Well compact, dark orangy brown, silty clay with sub angular stone	No archaeology, 2 field drains

Tr No	Length (m)	Width (m)	Depth (m)	Topsoil/Overburden	Subsoil	Details
107	50	2	0.3	Moderately compact, greyish brown, silty clay	Well compact, orangy brown, silty clay with sub rounded stone	No archaeology, 3 field drains
108	50	2	0.5	Moderately compact, greyish brown, silty clay	Well compact, orangy brown, silty clay	No Archaeology, 4 field drains
109	50	2	0.6	Well compact, greyish brown, silty clay	Well compact, orangy brown, silty clay, sub rounded stone	No archaeology, modern test pit and 2 field drains
110	50	2	0.4	Moderately compact, orangy brown, silty sand	Well compact, greyish orange, silty sand with occasional sub rounded stone	No archaeology, 2 field drains
111	50	2	0.6	Moderately compact, greyish brown, silty sand	Well compact, orangy brown, silty sand, sub rounded stone	No archaeology
112	50	2	0.4	Moderately firm, greyish brown, silty sand	Well compact, orangy brown, silty sand with sub rounded stone	2 Rig and Furrow
113	50	2	0.7	Moderately compact, greyish brown, silty sand	Well compact, orangy brown, silty sand with clay bands and sub rounded stone	2 Rig and Furrows and 2 Field drains
114	50	2	0.35	Moderately compact, greyish brown, silty sand	Well compact, orangy brown, silty sand with sub rounded stone	No archaeology
115	50	2	0.4	Moderately compact, greyish brown, silty sand	Well compact, orangy brown, silty sand with sub rounded stone	No archaeology
116	50	2	0.3	Moderately compact greyish brown, silty clay	Well compact, orangy brown, silty clay with sub rounded stone	No archaeology, 2 field drains
117	50	2	0.4	Moderately compact, greyish brown, silty sand	Well compact, orangy brown, silty sand with sub rounded stone	No archaeology
118	50	2	0.4	Moderately compact, greyish brown, silty sand	Moderately compact, mottled, orangy, greyish brown, silty sand with sub angular stone	No archaeology
119	50	2	0.5	Well compact, greyish brown, silty sand	Well compact, orangy brown, silty sand with sub rounded stone	No archaeology, 1 field drain
120	50	2	1.25	Well compact greyish brown, silty clay	Well compact, orangy brown with grey banding, a silty sand with gravel	No archaeology, 4 field drains and 1 tree bowl
121	50	2	1.5	Well compact, greyish brown, silty clay	Well compact, grey, silty sand	No archaeology, 3 field drains
122	50	2	0.8	Well compact, greyish brown, silty clay	Well compact, orangy brown with grey bands, silts sand with grey bands and gravel	No archaeology, 3 field drains
123	50	2	0.3	Moderately compact, greyish brown, silty sand	Well compact, greyish orangy brown, silty sand with sub rounded stone	No archaeology, 2 field drains
124	50	2	0.4	Moderately compact, greyish brown, silty sand	Well compact, dark orangy brown, silts sand, sub angular stone	No archaeology, 2 field drains
125	50	2	0.4	Moderately firm, greyish brown, silty sand	Well compact, brownish grey, silty sand with large sub rounded stone	No archaeology, 3 field drains

Tr No	Length (m)	Width (m)	Depth (m)	Topsoil/Overburden	Subsoil	Details
126	50	2	0.3	Moderately firm, greyish brown, silty sand	Well compact, dark orangy brown, silty sand with sub rounded stone	No archaeology, 3 field drains
127	50	2	0.35 - 0.6	Well compact, greyish brown, silty sand	Well compact, orangy - yellowish brown, silty sand	No archaeology, 3 field drains
135	Numbers not used	Numbers not used	Numbers not used	Numbers not used	Numbers not used	Numbers not used
129	Numbers not used	Numbers not used	Numbers not used	Numbers not used	Numbers not used	Numbers not used
130	Numbers not used	Numbers not used	Numbers not used	Numbers not used	Numbers not used	Numbers not used
131	Numbers not used	Numbers not used	Numbers not used	Numbers not used	Numbers not used	Numbers not used
132	Numbers not used	Numbers not used	Numbers not used	Numbers not used	Numbers not used	Numbers not used
133	Numbers not used	Numbers not used	Numbers not used	Numbers not used	Numbers not used	Numbers not used
134	Numbers not used	Numbers not used	Numbers not used	Numbers not used	Numbers not used	Numbers not used
135	50	2	0.6	Well compact, greyish brown, silty clay	Well compact, orangy brown, silty clay	No archaeology, 2 field drains
136	50	2	0.6	Well compact, greyish brown, silty clay	Well compact, greyish brown, silty clay with sub rounded stone	No archaeology, 1 test pit and 3 field drains
137	50	2	0.5	Moderately firm, greyish brown, silty sand	Well compact, orangy brown, silty clay with sub rounded stone	No archaeology, 4 field drains
138	50	2	0.6	Moderately compact, mid brown, silty sand	Moderately compact, orangy brown, silty sand with sub rounded stone and gravel	No archaeology, 4 field drains
139	50	2	0.4	Moderately compact, greyish brown, silty sand	Well compact, orangy brown, silty sand with sub rounded stone	No archaeology, 3 field drains
140	50	2	0.4	Moderately compact, greyish brown, silty sand	Well compact, orangy brown, silty sand with sub rounded stone	No archaeology, 3 field drains
141	50	2	0.3	Moderately compact, greyish brown, silty sand	Well compact, orangy brown, silty sand with sub rounded stone	No archaeology, 3 field drains
142	50	2	0.3	Modestly compact, greyish brown, silty sand	Well compact, orangy brown, silty sand with sub rounded stone	No archaeology, 1 field drain
143	50	2	0.3	Moderately compact, greyish brown, silty sand	Well compact, orangy brown, silty sand	No archaeology, 2 ceramic field drains and one stone drain
144	50	2	0.3	Moderately compact, greyish brown	Well compact orangy brown, silty sand with sub rounded stone	No archaeology, 3 field drains
145	50	2	0.3	Moderately firm, greyish brown, silty sand	Well compact, orangy brown, silty sand with sub rounded stone	No archaeology, 3 field drains
146	50	2	0.4	Moderately firm, greyish brown, silty sand	Well compact, orangy brown, silty sand with sub rounded stone	No archaeology, 2 field drains
147	50	2	0.6	Moderately firm, greyish brown, silty sand	Well compact, orangy brown, silty sand with occasional sub rounded stone	No archaeology, 3 field drains
148 B	50	2	0.4	Moderately firm, greyish brown, silty sand	Well compact, orangy brown, silty sand with occasional gravel pockets	No archaeology, 1 field drain

Tr No	Length (m)	Width (m)	Depth (m)	Topsoil/Overburden	Subsoil	Details
148	50	2	1.1	Well compact, greyish brown, silty clay	Well compact, orangy brown, silty sand	No archaeology, 6 field drains
149	50	2	1.6	Well compact, greyish brown, silty clay	Well compact, orangy brown, silty sand with gravel	No archaeology, 5 field drains
150	50	2	0.6	Moderately compact, greyish brown, silty clay	Well compact, mottled orangy brown with grey, silty clay with large rounded stones	No archaeology, large stone holes from the large stones and 3 field drains
151	50	2	0.5	Moderately compact, greyish brown, silty clay	Well compact, orangy brown, silty clay	No archaeology, 7 field drains
152	50	2	0.3	Moderately firm, greyish brown, silty sand	Moderately firm, orangy brown, silty sand with sub angular stone	No archaeology, 3 field drains
153	50	2	0.3	Moderately compact, greyish brown, silty sand	Well compact, orangy brown, silty sand with sub rounded stone	No archaeology, 3 field drains
154	50	2	0.3	Moderately firm, greyish brown, silty sand	Moderately compact, orangy brown, silty sand with sub rounded stone	No archaeology, 2 field drains
155	50	2	0.3	Moderately compact, greyish brown, silty sand	Well compact, orangy brown silty sand, sub rounded stone	No archaeology, 2 field drains
156	50	2	0.3	Moderately compact, orangy brown, silty sand	Well compact, orangy brown, silty sand with sub rounded / degraded stone	No archaeology, 2 Field drains
157	50	2	0.3	Moderately compact, greyish brown, silty sand	Well compact, orangy brown, silty sand with sub rounded stone	No archaeology, 2 field drains
158	50	2	0.3	Moderately compact, greyish brown, silty sand	Well compact, orangy brown, silty sand with sub rounded stone	No archaeology, 3 field drains
159	50	2	0.4	Moderately compact, greyish brown, silty sand	Well compact, orangy brown with grey banding, a silty sand with sub rounded stone	No archaeology, 2 field drains
160	50	2	0.4	Moderately compact, greyish brown, silty sand	Well compact, orangy brown, silty sand with sub rounded stone	No archaeology
161	50	2	0.4	Moderately compact, greyish brown, silty sand	Well compact, light orangy brown, silty sand with occasional gravel	No archaeology, 3 field drains
162	50	2	0.5	Well compact, greyish brown silty sand	Moderately firm, orangy brown, sandy clay sand with occasional gravel	No archaeology
163	50	2	0.5	Well compact, greyish brown, silty sand	Well - moderately compact, orangy brown, clayish, silty sand with gravel	Possible flint SF 015, 1 field drain
164	50	2	0.45- 0.5	Well compact, greyish brown, silty sand	Well compact, orangy/ yellowy/ reddish brown, silty sand	No archaeology
165	50	2	0.4	Well compact, greyish brown, silty sand	Well compact, orangy brown, silty sand with gravel bands	No archaeology, 2 field drains
166	50	2	0.5	Well compact, greyish brown, silty sand	Firm, mid brownish grey, silty clay with occasional gravel	No archaeology
167	50	2	0.5	Firm, dark greyish brown, silty sand with gravel	Firm, dark orangy brown, silty clay with gravel	No archaeology

Tr No	Length (m)	Width (m)	Depth (m)	Topsoil/Overburden	Subsoil	Details
168	50	2	0.5	Firm, dark greyish brown, sandy silt with gravel	Firm, mid orangy brown, sandy clay with gravel	No archaeology, 3 field drains
169	50	2	0.5	Well compact, greyish brown, silty sand	Firm, orangy/ yellowish brown, silty sand with gravel	No archaeology
170	50	2	0.4	Dark grey brown sandy silt	Mid -dark greyish brown silty sand	No archaeology
171	50	2	0.4	Dark grey brown sandy silt	Mid greyish brown silty sand	No archaeology
172	50	2	0.35	Dark grey brown sandy silt	Mid greyish brown silty sand	No archaeology
173	50	2	0.35	Dark grey brown sandy silt	Mid greyish brown silty sand	No archaeology
174	50	2	0.35	Dark grey brown sandy silt	Mid greyish brown silty sand	No archaeology
175	50	2	0.3	Dark grey brown sandy silt	Mid greyish brown silty sand	No archaeology
176	50	2	0.4	Greyish brown silty sand	Orangish brown silty sand	No archaeology. 1 field drain
177	50	2	0.3	Greyish brown silty sand	Orangish brown silty sand	No archaeology. 1 field drain
178	50	2	0.6	Greyish brown silty sand	Orangish brown silty clay	No archaeology. 6 field drains
179	50	2	0.4	Greyish brown silty sand	Orangish brown silty sand	No archaeology
180	50	2	0.4	Greyish brown silty sand	Orangish brown silty sand	No archaeology
181	50	2	0.4	Greyish brown silty sand	Orangish brown silty sand	No archaeology
182	50	2	0.5	Greyish brown silty sand	Orangish brown silty sand	No archaeology
183	50	2	0.5	Greyish brown silty sand	Dark orangish brown silty clay.	No archaeology
184	50	2	0.4	Greyish brown silty clay	Dark orangish brown silty clay.	No archaeology. 4 field drains
185	50	2	0.5	Greyish brown silty clay	Orangish brown silty clay.	No archaeology. 2 field drains
186	50	2	0.4	Greyish brown silty clay	Orangish brown silty sand	No archaeology
187	50	2	0.3	Greyish brown silty sand	Orangish brown silty sand	No archaeology. 3 field drains
188	50	2	0.6	Mid brown silty sand	Greyish brown silty clay	No archaeology. 2 field drains
189	50	2	0.7	Brown silty sand	Orangish brown silty sand	No archaeology. 1 field drain, 2 Rig and Furrow
190	50	2	0.3	Greyish brown silty sand	Orangish brown silty sand	No archaeology. 2 Rig and Furrow
191	50	2	0.3	Greyish brown silty sand	Orangish brown silty sand	No archaeology. 2 field drains
192	50	2	0.3	Greyish brown silty sand	Orangish brown silty sand	No archaeology
193	50	2	0.4	Greyish brown silty sand	Orangish brown silty sand	No archaeology. 3 field drains
194	50	2	0.3	Greyish brown silty sand	Orangish brown silty sand	No archaeology. 2 field drains
195	50	2	0.4	Greyish brown silty sand	Orangish brown silty sand	No archaeology
196	50	2	0.3	Greyish brown silty sand	Orangish brown silty sand	No archaeology. 1 field drain

Tr No	Length (m)	Width (m)	Depth (m)	Topsoil/Overburden	Subsoil	Details
197	50	2	0.4	Greyish brown silty sand	Orangish brown silty clay.	No archaeology. 4 field drains
198	50	2	0.4	Greyish brown silty sand	Orangish brown silty sand	No archaeology. 4 field drains
199	50	2	0.4	Greyish brown silty sand	Orangish brown silty sand	No archaeology. 4 field drains
200	50	2	0.4	Greyish brown silty sand	Orangish brown silty sand	No archaeology. 1 field drain
201	50	2	0.7	Greyish brown silty clay	Brownish grey silty clay	No archaeology. 2 field drains
202	50	2	0.4	Greyish brown silty sand	Orangish brown with black patches silty sand	No archaeology
203	50	2	0.4	Greyish brown silty sand	Orangish brown with black patches silty sand	No archaeology. 3 Rig and Furrow
204	50	2	0.4	Greyish brown silty sand	Orangish brown gravelly silty sand	No archaeology. 1 Rig and Furrow
205	50	2	0.5	Greyish brown silty sand	Orangish brown silty sand	No archaeology. 1 field drain
206	50	2	0.5	Greyish brown silty sand	Orangish brown silty sand	No archaeology. 2 field drains
207	50	2	0.3	Greyish brown silty sand	Orangish brown gravelly silty sand	No archaeology. 1 field drain
208	50	2	0.6	Greyish brown silty sand	Yellowish grey silty sand	No archaeology
209	50	2	0.4	Greyish brown silty sand	Orangish brown sand	No archaeology. 2 field drains
210	50	2	0.4	Greyish brown silty sand	Yellowish brown sand	No archaeology
211	50	2	0.5	Greyish brown silty sand	yellowish brown with black sand	No archaeology
212	50	2	0.5	Greyish brown silty sand	yellowish brown sand	No archaeology. 1 field drain
213	50	2	0.3	Dark-mid greyish brown silty sand	Orangish brown with black sand	No archaeology. 2 field drains
214	50	2	0.5	Greyish brown silty sand	Orangish brown gravelly sand	No archaeology. 2 field drains
215	50	2	0.3	Greyish brown silty sand	Orangish brown silty sand	No archaeology

Appendix C: List of Contexts

Context No	Area	Description	Interpretation
001		Mid brown silty clay, 0.3 m depth and 0.7m thick.	Deposit/Topsoil
002		Orangish brown silty sand, manganese texture.	Deposit/Natural
003		Grey with a lower blue layer in parts, pure clay, over 2 m depth.	Aluvial deposit
004		Mottled grey/brown silty clay, 6 m wide	Deposit. Poss. Rig and Furrow in trench 018
005		Unknown length, 6m breath, 0.40 m depth. Orientation NE-SW, possible linear shape in plan with gentle break at top and gentle sides and concave base.	Cut of a possible Rig and Furrow.
006		2.5m length, 2m exposed width and 0.4m depth. Circular shape in plan with sharp sides and concave base.	Modern dumping pit containing wood drain pipe.
007		Brown gravelly sand, soft texture, occasional gravels/pebbles	Fill of a rig and furrow. Tr029
008		Blackish brown sandy clay, loose texture and frequent pebbles. 0.10m depth by 0.40m diameter.	Fill of stone hole in Trench 50
009		Poss. Semi-circular shape in plan 0.40m diameter with 0.10m depth, sharp-gradual break at top with vertical sides and uneven/flat base	Cut of of stone hole in Trench 50
010		Sub-circular in plan. 0.27m in diameter. Filled with a mid-orange brown sandy gravel	Degraded stone in Trench 52

Appendix D: List of Finds

Find No	Area/trench	Context No	No of Pieces	Material	Type	Description
1		001	1	Stone	Flint	Core flint, possible worked
2		001	1	Ceramic	CBM	Frag. Poss. Glazed pipe
3		001	1	Metal	Cu-Alloy	circular disk
4	026	001	1	Metal	Cu-Alloy	poss. Tag
5	028	001	1	Metal	Metal	Button
6	029	001	1	Metal	Cu-Alloy	Washer
7	040	001	1	Metal	Cu-Alloy	Cilinder
8	005	001	1	Metal	Cu-Alloy	Circular disk- Coin shape
9	069	001	1	Metal	Cu-Alloy	Small toy jar
10		001	1	Metal	Cu-Alloy	Poss. washer
11	170	001	1	Metal	Cu-Alloy	Watch
12	144	001	1	Metal	Cu-Alloy	Broken disc
13	179	001	1	Metal	Cu-Alloy	Poss. Coin
14	184	001	1	Metal	probably FE	Jar lid
15	163	001	1	Stone	Flint	Poss. Core flint
16	186	001	1	Metal	Cu-Alloy	Poss. Coin

Appendix E: List of Photographs

Film No.	001			
Frame	Trench	Context No.	Subject	Taken from
1			ID Shot	
2			General shot field	NE
3			General shot access	NW
4			General shot field	NW
5			General shot field	NE
6			General shot field	NE
7			General shot field	SE
8			General shot field	SE
9			General shot field	NE
10			General shot field	NE
11			General shot field	SW
12			General shot field	NE
13			General shot field	NW
14			General shot field	SE
15	001		ID Shot Tr.001	
16	001		Location shot	SE
17	001		Plan shot of 001	E
18	001		Section of 001	N
19	001		Field drain in 001	WSW
20	002		ID Shot 002	
21	002		Location shot	SW
22	002		Section of 002	NW
23	002		Plan shot of 002	NE
24	003		ID Shot 003	
25	003		Location	NW
26	003		Section	NE
27	003		Plan 003	SE
28	003		Modern test pit in 003	SW
29	004		ID Shot	
30	004		Location	SW
31	004		Plan of Field drain	W
32	004		Section of Field drain	S
33	004		Plan of trench 004	SE

Frame	Trench	Context No.	Subject	Taken from
34	004		Section of 004	SE
35	005		ID shot	
36	005		Location	W
37	005		Section	SW
38	005		Plan	SE
39	006		ID Shot	
40	006		Location	NW
41	006		Plan	SE
42	006		Section	SW
43	007		ID Shot	
44	007		Location	S
45	007		Stone hole in 007	NW
46	007		Section	W
47	007		Plan	S
48	008		ID Shot	
49	008		Location	SE
50	008		Section	E
51	008		Plan	N
52	009		ID shot	
53	009		Location shot	SW
54	009		Section	SSW
55	009		Plan	ESE
56	010		ID Shot	
57	010		Location shot	SW
58	010		Section	S
59	010		Plan	WSW
60	011		ID shot	
61	011		Location	SW
62	011		Section of wester sondage 1.8m	N
63	011		Plan of western sondage 1.8m	W
64	011		Section of eastern sondage 1.8m	N
65	011		Plan of eastern sondage 1.8m	W
66	011		Plan of trench	W
67	011		Section	N
68	012		ID shot	
69	012		Location shot	SW
70	012		West sondage section	N
71	012		West sondage plan	W
72	012		Section	N
73	012		Plan	W
74	013		ID shot	
75	013		Location	E
76	013		Plan	W
77	014		ID shot	
78	014		Location	W
Film No.	002			
1			ID shot	
2	014		Section	S
3	014		Plan	E
4	015		ID shot	
5	015		Location	NW
6	015		Section	SW
7	015		Plan	SE
8	016		ID shot	
9	016		Location	SW

Frame	Trench	Context No.	Subject	Taken from
10	016		Plan	SW
11	016		Section	SE
12	017		ID shot	
13	017		Location	SSE
14	017		Section	WSW
15	017		Plan	NNW
16	018		ID shot	
17	018		Location	SE
18	018		Section	ENE
19	018	(004)[005]	Oblique section poss. Rig and Furrow	SW
20	018	(004)[005]	Plan of poss. Rig and Furrow	NNW
21	018		Plan of trench	NNW
22	019		ID shot	
23	019		Location	W
24	019		Section	SW
25	019		Plan	SE
26	020		ID shot	
27	020		location	SE
28	020		Section	SSE
29	020		Plan	ESE
30	021		ID shot	
31	021		Location	NW
32	021		Section	SW
33	021		Plan	SE
34	022		ID shot	
35	022		Location	W
36	022		Section	SSW
37	022		Plan	ENE
38	023		ID shot	
39	023		Location	W
40	023		Section	S
41	023		Plan	E
42	023	(006)	Plan shot of modern dump pit	N
43	023	(006)	Finds from modern dump pit	
44	024		ID shot	
45	024		Location	NW
46	024		Section	W
47	024		Plan	S
48	025		ID shot	
49	025		Location	NW
50	025		Section	E
51	025		Plan	S
52	026		ID shot	
53	026		Location	N
54	026		Section	E
55	026		Plan	S
56	027		ID shot	
57	027		Location	NW
58	027		Section	E
59	027		Plan	S
60	028		ID shot	
61	028		Location	N
62	028		Section	E
63	028		Plan	WN
64	029		ID shot	

Frame	Trench	Context No.	Subject	Taken from
65	029		Location	NME
66	029		Section	SE
67	029		Plan of R&F	SE
68	029		Section of R&F	SE
69	029		Plan of trench	NE
70	030		ID shot	
71	030		Location	E
72	030		Section	S
73	030		Plan	E
74	029	(007)	West facing section of R&F	W
75	031		ID shot	
76	031		Location	NW
77	031		Section	NE
78	031		Plan	SE
79	032		ID shot	
80	032		Location	SE
81	032		Section	NE
Film No	003			
1			ID shot	
2	032		Plan	NW
3	033		ID shot	
4	033		Location	SE
5	033		Section	NE
6	033		Plan	SE
7	040		ID shot	
8	040		Location	NW
9	040		Section	NE
10	040		Plan	SE
11	041		ID shot	
12	041		Location	NW
13	041		Section	NE
14	041		Plan	SE
15	042		ID shot	
16	042		Location	NW
17	042		Section	NE
18	042		Plan	SE
19	043		ID shot	
20	043		Location	SW
21	043		Section	NW
22	043		Plan	NE
23	044		ID shot	
24	044		Location	SW
25	044		Section	NW
26	044		Linear	NW
27	044		Plan	SW
28	045		ID shot	
29	045		Location	NE
30	045		Section	E
31	045		Plan	S
32	046		ID shot	
33	046		Location	N
34	046		Section	E
35	046		Plan	S
36	047		ID shot	
37	047		Location	N

Frame	Trench	Context No.	Subject	Taken from
38	047		Section	E
39	047		Plan	S
40	048		ID shot	
41	048		Location	N
42	048		Section	SE
43	048		Plan	SW
44	049		ID shot	
45	049		Location	NE
46	049		Section	SE
47	049		Plan	SW
48	050		ID shot	
49	050		West facing section	W
50	050		Plan view	N
51	051		ID shot	
52	051		East facinf section	E
53	051		Plan view	S
Film No	004			
1			ID shot	
2	052		ID shot	
3	052		West facing section	W
4	052		Plan view	N
5	052	(010)	Pit unexcavated	N
6	053		ID shot	
7	053		South facing section	S
8	053		Plan view	NW
9	062		ID shot	
10	062		southwestr facing section	SW
11	062		Plan view	NW
12	050	(008)[009]	Plan view. Mid-ex pit	S
13	050	(008)[009]	Southn facing saection pit	S
14	061		ID shot	
15	061		North east facing section	NE
16	061		Plan view	SE
17	054		ID shot	
18	054		Location	NW
19	054		Section	NE
20	054		Plan	SE
21	055		ID shot	
22	055		Location	NW
23	055		Section	NE
24	055		Plan	SE
25	056		ID shot	
26	056		Location	NW
27	056		Section	NE
28	056		Plan	SE
29	057		ID shot	
30	057		Location	NW
31	057		Section	NE
32	057		Plan	SE
33	058		ID shot	
34	058		Location	NW
35	058		Section	NE
36	058		Plan	SE
37	059		ID shot	
38	059		Location	NW

Frame	Trench	Context No.	Subject	Taken from
39	059		Section	NE
40	059		Plan	SE
41	060		ID shot	
42	060		Location	NW
43	060		Section (deep clay)	NE
44	060		Section	NE
45	060		Plan	SE
46	034		ID shot	
47	034		Location	N
48	034		Section	W
49	034		Plan	S
50	035		ID shot	
51	035		Location	N
52	035		Section	E
53	035		Plan	S
54	036		ID shot	
55	036		Location	N
56	036		Section	E
57	036		Plan	S
58	037		ID shot	
59	037		Location	N
60	037		Section	E
61	037		Plan	S
62	038		ID shot	
63	038		Location	N
64	038		Section	E
65	038		Plan	S
66	039		ID shot	
67	039		Location	N
68	039		Section	E
69	039		Plan	S
70	063		ID shot	
71	063		Location	N
72	063		Section	E
73	063		Plan	S
74	064		ID shot	
75	064		Location	SW
76	064		Section	NW
77	064		Plan	NE
78	065		ID shot	
79	065		Location	NW
80	065		Section	NE
81	065		Plan	SE
82	066		ID shot	
83	066		Location	NW
Film No	5			
1			ID shot	
2	066		Section	NE
3	066		Plan	SE
4	067		ID shot	
5	067		Location	NW
6	067		Section	NE
7	067		Plan	SE
8	068		ID shot	
9	068		Location	NW

Frame	Trench	Context No.	Subject	Taken from
10	068		Section	NE
11	068		Plan	SE
12	069		ID shot	
13	069		Location	NW
14	069		Section	SW
15	069		Plan	SE
16	069		Oblique section	S
17	070		ID shot	
18	070		Section	SW
19	070		Plan	SE
20	071		ID shot	
21	071		Section	NE
22	071		Plan	SE
23	072		ID shot	
24	072		Location	NE
25	072		Section	SE
26	072		Plan	SW
27	073		ID shot	
28	073		Location	NE
29	073		Test section (1.4m)	NW
30	073		Section	NW
31	073		Plan	
32	074		ID shot	
33	074		Locution	S
34	074		Section	W
35	074		Plan	N
36	075		ID shot	
37	075		Location	NE
38	075		Section	SE
39	075		Plan	SW
40	076		ID shot	
41	076		Location	NE
42	076		Section	SE
43	076		Plan	SW
44	077		ID shot	
45	077		Location	N
46	077		Section	E
47	077		Plan	S
48	078		ID shot	
49	078		Location	N
50	078		Section	E
51	078		Plan	S
52	079		ID shot	
53	079		Location	N
54	079		Section	E
55	079		Plan	S
56	080		ID shot	
57	080		Location	N
58	080		Section	ENE
59	080		Plan	SSW
60	085		ID shot	
61	085		Location	NW
62	085		Section	NE
63	085		Plan	SE
64	086		ID shot	

Frame	Trench	Context No.	Subject	Taken from
65	086		Location	NW
66	086		Section	NE
67	086		Plan	SE
68	084		ID shot	
69	084		Location	W
Film No	006			
1			ID shot	
2	084		Section	N
3	084		Plan	E
4	083		ID shot	
5	083		Location	NW
6	083		Section	NE
7	083		Plan	SE
8	082		ID shot	
9	082		Location	NW
10	082		Section	SW
11	082		Plan	SE
12	081		ID shot	
13	081		Location	NW
14	081		Section	SW
15	081		Plan	SE
16	087		ID shot	
17	087		Location	NE
18	087		Sectionm	SE
19	087		Plan	SW
20	088		ID shot	
21	088		Location	NE
22	088		Section	NW
23	088		Plan	SW
24	089		ID shot	
25	089		Location	NE
26	089		Section	SE
27	089		Plan	SW
28	090		ID shot	
29	090		Location	NE
30	090		Section	SE
31	090		Plan	SW
32	091		ID shot	
33	091		Location	NE
34	091		Section	SE
35	091		Plan	SW
36	092		ID shot	
37	092		Location	NE
38	092		Section	SE
39	092		Plan	SW
40	093		ID shot	
41	093		Location	NE
42	093		Section	SE
43	093		Plan	SW
44	094		ID shot	
45	094		Location	NE
46	094		Section	SE
47	094		Plan	SW
48	095		ID shot	
49	095		Location	NE

Frame	Trench	Context No.	Subject	Taken from
50	095		Section	NW
51	095		Plan	NE
52	096		ID shot	
53	096		Location	N
54	096		Section	E
55	096		Plan	S
56	106		ID shot	
57	106		Location	NW
58	106		Section	NE
59	106		Plan	SE
60	107		ID shot	
61	107		Location	NW
62	107		Section	NE
63	107		Plan	SE
64	097		ID shot	
65	097		Location	NW
66	097		Section	SW
67	097		Plan	SE
68	098		ID shot	
69	098		Location	NW
70	098		Section	SW
71	098		Plan	SE
72	099		ID shot	
73	099		Location	NW
74	099		Section	NE
75	099		Plan	SE
76	100		ID shot	
77	100		Location	NW
Film No	007			
1			ID shot	
2	100		Section	NE
3	100		Plan	SE
4	101		ID shot	
5	101		Location	NW
6	101		Section	NE
7	101		Plan	SE
8	102		ID shot	
9	102		Location	NW
10	102		Section	NE
11	102		Plan	SE
12	103		ID shot	
13	103		Location	NW
14	103		Section	NE
15	103		Plan	SE
16	104		ID shot	
17	104		Location	NW
18	104		Section	NE
19	104		Plan	SE
20	108		ID shot	
21	108		Location	NW
22	108		Section	NE
23	108		Plan	SE
24	109		ID shot	
25	109		Location	NE
26	109		Section	SE

Frame	Trench	Context No.	Subject	Taken from
27	109		Plan	SW
28	105		ID shot	
29	105		Location	NE
30	105		Section	SE
31	105		Plan	SW
32	110		ID shot	
33	110		Location	NE
34	110		Section	SE
35	110		Plan	SW
36	111		ID shot	
37	111		Location	NE
38	111		Section	SE
39	111		Plan	SW
40	112		ID shot	
41	112		Location	NE
42	112		Section	SE
43	112		Plan	SW
44	113		ID shot	
45	113		Location	NE
46	113		Section	SE
47	113		R&F Plan	NW
48	113		Plan	SW
49	114		ID shot	
50	114		Location	NE
51	114		Section	SE
52	114		Plan	SW
53	116		ID shot	
54	116		Location	NW
55	116		Section	SE
56	116		Plan	SW
57	118		ID shot	
58	118		Location	SW
59	118		Section	SE
60	118		Plan	NE
61	119		ID shot	
62	119		Location	SW
63	119		Section	SE
64	119		Plan	NE
65	115		ID shot	
66	115		Location	SE
67	115		Section	SE
68	115		Plan	NE
69	117		ID shot	
70	117		Location	SW
71	117		Section	SE
72	117		Plan	NE
73	120		ID shot	
74	120		Location	E
75	120		Section	N
76	120		Poss. Posthole (treebowl)	E
77	120		Plan	W
78	121		ID shot	
79	121		Location	E
80	121		Section	N
81	121		Plan	W

Frame Film No	Trench 008	Context No.	Subject	Taken from
1	148		ID Trench	
2	148		Location	E
3	148		Section	S
4			Film ID	
5	148		Plan	W
6	149		ID shot	
7	149		Location	E
8	149		Section	S
9	149		Plan	W
10	136		ID shot	
11	136		Location	NE
12	136		Section	SE
13	136		Plan	SW
14	135		ID shot	
15	135		Location	NE
16	135		Section	SE
17	135		Plan	SW
18	137		ID shot	
19	137		Location	NE
20	137		Section	SE
21	137		Plan	SW
22	138		ID shot	
23	138		Location	NE
24	138		Section	SE
25	138		Plan	SW
26	139		ID shot	
27	139		Location	NE
28	139		Section	SE
29	139		Plan	SW
30	140		ID shot	
31	140		Location	NE
32	140		Section	SE
33	140		Plan	SW
34	141		ID shot	
35	141		Location	NE
36	141		Section	SE
37	141		Plan	SW
38	142		ID shot	
39	142		Location	NE
40	142		Section	SE
41	142		Plan	SW
42	143		ID shot	
43	143		Location	NE
44	143		Traditional stone. Field drain Plan	W
45	143		Stone fielddrain section	W
46	143		Section	SE
47	143		Plan	SW
48	144		ID shot	
49	144		Location	NE
50	144		Section	SE
51	144		Plan	SW
52	145		ID shot	
53	145		Location	NE
54	145		Section	E

Frame	Trench	Context No.	Subject	Taken from
55	145		Plan	S
56	146		ID shot	
57	146		Location	NE
58	146		Section	E
59	146		Plan	S
60	147		ID shot	
61	147		Location	S
62	147		Section	W
63	147		Plan	N
64	148		ID shot	
65	148		Location	E
66	148		Section	SE
67	148		Plan	SW
68	150		ID shot	
69	150		Location	SE
70	150		Section	SW
71	150		Plan	NW
72	152		ID shot	
73	152		Location	SE
74	152		Section	SW
75	152		Plan	NW
76	151		ID shot	
77	151		Location	SE
78	151		Section	SW
79	151		Plan	NW
80	153		ID shot	
81	153		Location	SE
82	153		Section	NE
83	153		Plan	SE
84	154		ID shot	
85	154		Location	SE
86	154		Section	NE
87	154		Plan	SE
Film No	009			
1			ID shot	
2	155		ID shot	
3	155		Location	NW
4	155		Section	NE
5	155		Plan	SW
6	156		ID shot	
7	156		Location	NW
8	156		Section	NE
9	156		Plan	SE
10	157		ID shot	
11	157		Location	NW
12	157		Section	NE
13	157		Plan	SE
14	158		ID shot	
15	158		Location	NW
16	158		Section	NE
17	158		Plan	SE
18	159		ID shot	
19	159		Location	NW
20	159		Section	NE
21	159		Plan	SE

Frame	Trench	Context No.	Subject	Taken from
22	160		Location	SE
23	160		Section	SW
24	160		Plan	NW
25	161		ID shot	
26	161		Location	SE
27	161		Section	SW
28	161		Plan	NW
29	178		ID shot	
30	178		Location	E
31	178		Section	S
32	178		Plan	W
33	122		ID shot	
34	122		Location	NW
35	122		Section	SW
36	122		Plan	SE
37	123		ID shot	
38	123		Location	NW
39	123		Section	SW
40	123		Plan	SE
41	124		ID shot	
42	124		Location	NW
43	124		Section	NE
44	124		Plan	SE
45	125		ID shot	
46	125		Location	NW
47	125		Section	NE
48	125		Plan	SE
49	126		ID shot	
50	126		Location	NW
51	126		Section	N
52	126		Plan	W
53	127		ID shot	
54	127		Location	SE
55	127		Section	W
56	127		Plan	SE
57	179		ID shot	
58	179		Location	W
59	179		Section	N
60	179		Plan	W
61	180		ID shot	
62	180		Location	W
63	180		Section	N
64	180		Plan	W
65	181		ID shot	
66	181		Location	W
67	181		Section	N
68	181		Plan	W
69	182		ID shot	
70	182		Location	S
71	182		Section	W
72	182		Plan	S
73	183		ID shot	
74	183		Location	E
75	183		Section	S
76	183		Plan	E

Frame	Trench	Context No.	Subject	Taken from
77	162		ID shot	
78	162		Location	NE
79	162		Section	S
80	162		Plan	E
81	163		ID shot	
82	163		Location	E
83	163		Section	S
84	163		Plan	E
85	165		ID shot	
86	165		Location	E
87	165		Section	S
88	165		Plan	E
89	164		ID shot	
90	164		Location	E
91	164		Section	S
92	164		Plan	E
93	166		ID shot	
94	166		Pre excavation	SW
95	166		Post excavation	SW
96	166		Section	SE
97	167		ID shot	
98	167		Pre excavation	E
99	167		Post excavation	W
100	167		Section	S
101	168		ID shot	
102	168		Pre excavation	W
103	168		Post excavation	W
104	168		Section	S
105	169		ID shot	
106	169		Location	N
107	169		Post excavation East end	E
FilmNo	010			
1			ID shot	
2	169		Post excavation west end	W
3	169		Section	S
4	170		ID shot	
5	170		Location	W
6	170		Post excavation	W
7	170		Section	S
8	171		ID shot	
9	171		Location	W
10	171		Post excavation	W
11	171		Section	S
12	172		ID shot	
13	172		Location	W
14	172		Post excavation	W
15	172		Section	S
16	173		ID shot	
17	173		Location	W
18	173		Post excavation	W
19	173		Section	W
20	174		ID shot	
21	174		Location	W
22	174		Post excavation	W
23	174		Section	S

Frame	Trench	Context No.	Subject	Taken from
24	175		ID shot	
25	175		Location	W
26	175		Post excavation	W
27	175		Section	S
28	176		ID shot	
29	176		Location	NE
30	176		Section	SE
31	176		Plan	NE
32	177		ID shot	
33	177		Location	NE
34	177		Section	SE
35	177		Plan	SW
36	177		Plan	S
37	184		ID shot	
38	184		Location	NW
39	184		Section	NE
40	184		Plan	SE
41	185		ID shot	
42	185		Location	NW
43	185		Section	NE
44	185		Plan	SW
45	186		ID shot	
46	186		Location	NW
47	186		Section	NE
48	186		Plan	SW
49	187		ID shot	
50	187		Location	NW
51	187		Section	NE
52	187		Plan	SE
53	188		ID shot	
54	188		Location	NW
55	188		Section	NE
56	188		Plan	SE
57	189		ID shot	
58	189		Location	NW
59	189		Section	NE
60	189		Plan	SE
61	190		ID shot	
62	190		Location	NW
63	190		Section	NE
64	190		Plan	SE
65	191		ID shot	
66	191		Location	NW
67	191		Section	NE
68	191		Plan	SE
69	192		ID shot	
70	192		Location	NW
71	192		Section	NE
72	192		Plan	SE
73	193		ID shot	
74	193		Location	NW
75	193		Section	NE
76	193		Plan	SE
77	194		ID shot	
78	194		Location	NW

Frame	Trench	Context No.	Subject	Taken from
79	194		Section	NE
80	194		Plan	SE
81	195		ID shot	
82	195		Location	NW
83	195		Section	NE
84	195		Plan	SE
Film No	11			
1			ID shot	
2	196		ID shot	
3	196		Location	NW
4	196		Section	NE
5	196		Plan	SE
6	197		ID shot	
7	197		Location	NE
8	197		Section	NW
9	197		Plan	SW
10	198		ID shot	
11	198		Location	NE
12	198		Section	SE
13	198		Plan	SW
14	199		ID shot	
15	199		Location	NE
16	199		Section	SE
17	199		Plan	SW
18	200		ID shot	
19	200		Location	NE
20	200		Section	SE
21	200		Plan	SW
22	201		ID shot	
23	201		Location	NE
24	201		Section	SE
25	201		Plan	SW
26	199		Section of modern pit	E
27	199		Plan of modern pit	N
28	202		ID shot	
29	202		Location	NE
30	202		Section	SE
31	202		Plan	SW
32	203		ID shot	
33	203		Location	NE
34	203		Section	SE
35	203		Plan	SW
36	204		ID shot	
37	204		Location	NE
38	204		Section	SE
39	204		Plan	SW
40	205		ID shot	
41	205		Location	NE
42	205		Section	SE
43	205		Plan	SW
44	206		ID shot	
45	206		Location	NE
46	206		Section	SE
47	206		Plan	SW
48	207		ID shot	

Frame	Trench	Context No.	Subject	Taken from
49	207		Location	NE
50	207		Section	SE
51	207		Plan	SW
52	214		ID shot	
53	214		Location	W
54	214		Section	S
55	214		Plan	W
56	213		ID shot	
57	213		Location	NW
58	213		Section	SW
59	213		Plan	SE
60	212		ID shot	
61	212		Location	NW
62	212		Section	NE
63	212		Plan	SE
64	215		ID shot	
65	215		Location	NW
66	215		Section	NE
67	215		Plan	SE
68	208		ID shot	
69	208		Location	NW
70	208		Section	NE
71	208		Plan	SW
72	209		ID shot	
73	209		Location	NW
74	209		Section	NE
75	209		Plan	SE
76	210		ID shot	
77	210		Location	NW
78	210		Section	NE
79	210		Plan	SW
80	211		ID shot	
81	211		Location	NW
82	211		Section	SW
83	211		Plan	SE
84			Photos of Bulk.Finds from Metal Detecting	
85			Photos of Bulk.Finds from Metal Detecting	
86			Photos of Bulk.Finds from Metal Detecting	
87			Photos of Bulk.Finds from Metal Detecting	
88			Photos of Bulk.Finds from Metal Detecting	

Appendix F: Discovery and Excavation Scotland

LOCAL AUTHORITY:	City of Edinburgh Council
PROJECT TITLE/SITE NAME:	Cammo Fields
PROJECT CODE:	4757
PARISH:	Edinburgh
NAME OF CONTRIBUTOR(S):	Jamie Henderson
NAME OF ORGANISATION:	GUARD Archaeology Limited
TYPE(S) OF PROJECT:	Archaeological evaluation
NMRS NO(S):	none
SITE/MONUMENT TYPE(S):	none
SIGNIFICANT FINDS:	none
NGR (2 letters, 6 figures)	NT 181 744
START DATE (this season)	23/04/18
END DATE (this season)	07/06/18
PREVIOUS WORK (incl. <i>DES</i> ref.)	none
MAIN (NARRATIVE) DESCRIPTION: (May include information from other fields)	An archaeological evaluation at Maybury Road, Edinburgh undertaken by GUARD Archaeology Limited on behalf of CALA Homes Limited and David Wilson East Scotland between the 23rd of April and the 7th of June 2018. 209 trenches were excavated across the development area; post-Medieval rig and furrow features were recorded in 17 trenches. The evaluation established that the average thickness of the top soil was between 0.4 and 0.5m with field drains throughout the area suggesting that the area has been consistently used for agriculture and undergone drainage improvements to facilitate this.
PROPOSED FUTURE WORK:	unknown
SPONSOR OR FUNDING BODY:	CALA Homes Limited/ David Wilson East Scotland
CAPTION(S) FOR ILLUSTRS:	none
ADDRESS OF MAIN CONTRIBUTOR:	EH20 Business Centre, 6 Dryden Road, Bilson Glen Industrial Estate, Loanhead, Midlothian, EH20 9LZ
EMAIL ADDRESS:	bob.will@guard-archaeology.co.uk
ARCHIVE LOCATION (intended/deposited)	Archive to be deposited in NRHE

Appendix G: Written Scheme of Investigation

CAMMO FIELDS, EDINBURGH

ARCHAEOLOGICAL WRITTEN SCHEME OF INVESTIGATION

METAL DETECTING SURVEY AND EVALUATION

PROJECT 4757



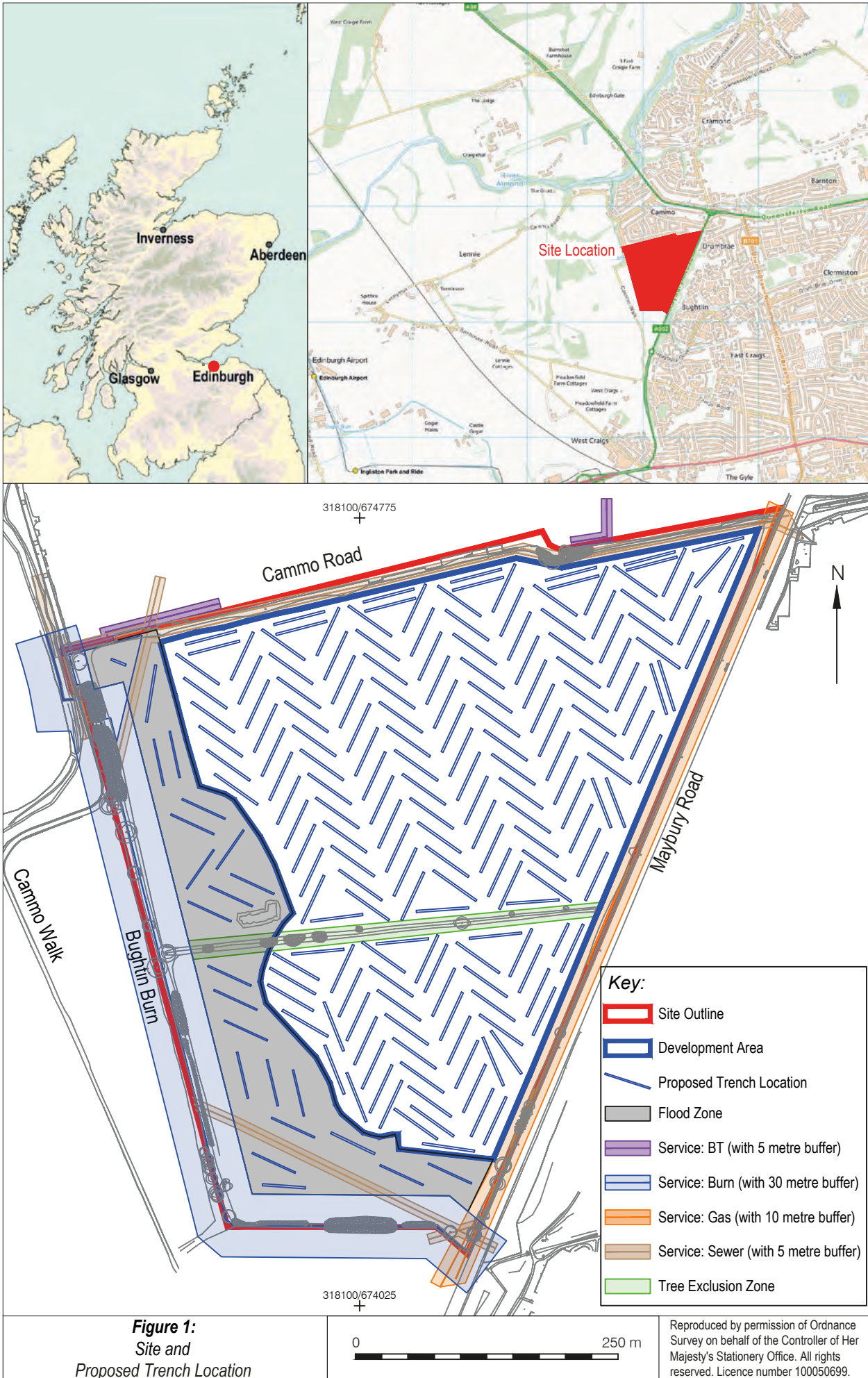


Figure 1:
Site and
Proposed Trench Location

Reproduced by permission of Ordnance Survey on behalf of the Controller of Her Majesty's Stationary Office. All rights reserved. Licence number 100050699.

Executive Summary

- 1.1 This Written Scheme of Investigation forms the archaeological method statement for the required metal detecting survey and evaluation of Cammo Fields, Edinburgh and will require to be submitted and agreed by City of Edinburgh Council Archaeology Service (hereafter CECAS) prior to the commencement of the fieldwork.

Introduction

- 2.1 This Written Scheme of Investigation (WSI) sets out the methodology for the archaeological mitigation works recommended by CECAS for Cammo Fields, Edinburgh (Planning Ref: 14/01776/PPP). In accordance with the recommendation from CECAS, an initial metal detecting survey of each trench prior to excavation will be undertaken to establish if any archaeological artefacts relating to the earlier use of the development area are buried within the topsoil. An archaeological evaluation of the development area will then be undertaken to establish the presence, extent and nature of any significant archaeological remains. Should significant remains be identified and it is not possible to preserve them *in situ* a further requirement for archaeological works to ensure their preservation through record is likely to be required.
- 2.2 This WSI outlines the programme of archaeological works that may be needed to mitigate the effects of the proposed development. It details the methodology to be employed in implementing the Stage 1 archaeological works. The mitigation methodology to be employed during Stage 2 excavation and Stage 3 post excavation analysis and publication, if required, will be specified in *addenda* to this document. These *addenda*, if required, will be submitted for the approval of the CECAS, prior to the commencement of any archaeological work. All phases of work will be funded by the developer as required by the Planning Authority.

Site Location

- 3.1 The development area is located at Cammo Fields, Edinburgh (NGR: centred at NT 18111 74422). It comprises a 28.44 ha area divided into two fields currently used as agricultural land. The site is bounded by Cammo Grove residential estate to the north, A902 Maybury Road to its east, agricultural land and Bughtlin Burn to its south and west and Cammo Country Park at its north-west corner.

Archaeological Background

- 4.1 An Environmental Impact Assessment (EIA) revealed that although no archaeological remains are recorded within the development, prehistoric and post-medieval activity is known in its vicinity.
- 4.2 To the west of the Site, within the Cammo Garden and Designed Landscape, the Cammo Scheduled Monument, a Prehistoric standing stone (SM 6189) is located to the southeast of the ruins of Cammo House (LB. 28037). The standing stone comprises of a probable Late Neolithic or Bronze Age stone, standing to a height of 1.4m at an elevation of 50m OD. This elevated height would have meant that the position of the stone would have commanded extensive views over the surrounding landscape, however the stone is now situated within mature woods as part of the designed landscape, obscuring these views.
- 4.3 To the north of the site near Braehead Park at Barton, the NRHE noted a cropmark of a possible pit-alignment (NRHE. NT 17 NE 269).
- 4.4 The Schedule Monument of Cramond Roman fort and settlement (SM. 25426) located on the coast of the Firth of Forth, is approximately 2 km north-east of the development.
- 4.5 A number of post-medieval sites, mostly associated with Cammo Estate are noted west of the development site. They include: Cammo House (LB 28037) a 17th century Category B Listed Building, 19th century B Listed stable block (LB. 30259), the piggery to the west and the C Listed, 18th century walled garden (LB. 30261). The historic Cammo Garden and Designed Landscape (GDL 00081) is also

located to the west; B Listed, 19th century water tower (LB 28039) is a key feature of this designed landscape as Cammo Estate Knoll (LB 47715), a B listed stone dyke encircling the crest of a low natural hillock.

- 4.6 As the development area comprises agricultural fields that have not been occupied intensively since cartographic records were made, there is a potential for archaeological remains, particularly prehistoric archaeological remains, to survive buried within the development area.

Aims, Objectives and Scope

- 5.1 The aim of the archaeological evaluation is to identify:
- the extent and nature of known archaeological features within the development area;
 - as yet unknown archaeological features and deposits within the development area.
- 5.2 The objectives are therefore to:
- Conduct an archaeological metal detecting survey on each trench location prior to excavation to establish the presence or absence of metal archaeological artefacts;
 - Conduct an archaeological evaluation within the development area to establish the presence or absence of any archaeological remains, and their character, date and extent if surviving;
 - Submit a report to data structure level for agreement of CECAS, acting on behalf of the Planning Authority, on completion of the archaeological fieldwork, which includes an outline of the scope of any further excavation works should any significant archaeology be encountered.

Fieldwork Methodology

Metal Detecting Survey

- 6.1 An initial metal detecting survey of each trench, across the 28.44 ha development area, prior to excavation will be undertaken in order to establish the presence or absence any metal archaeological artefacts that survive within the topsoil. No metal will be discriminated during the survey. Where a positive signal is found a discrete hole will be excavated into turf and topsoil to reveal the object. Where items are found to lie below topsoil level, and therefore within an earlier and/or undefined context, the item position will be surveyed and will remain *in situ* pending trenching. All finds from topsoil level, other than those which are demonstrably modern, will be recorded, plotted using GPS and recovered for processing and analysis.
- 6.3 Finds that are detected during the metal detecting survey will be surveyed in by sub-metre GPS and recovered using stratigraphically controlled key-hole excavation for identification and further study if necessary. All finds collected during metal detecting will be assessed for identification by a suitably qualified and experienced battlefield archaeologist.

Archaeological Evaluation

- 6.4 The metal detecting survey will be followed by an archaeological evaluation of the available area with in the development. The available area for evaluation is 18.61 ha of the area outwith the flood zone, minus any service buffers (Figure 1) and 4.46 ha within the flood zone, accounting for a 30 m exclusion zone along the Bughtlin Burn. The evaluation will comprise the machine excavation of trenches amounting to 10% of the 18.61 ha area (18,610 m²), and 5% of the 4.46 ha flood zone (2,229 m²) (Figure 1). This will evaluate the presence, nature, significance and extent of any archaeological features.
- 6.5 The evaluation trenches across the area outwith the flood zone will comprise 185 trenches measuring 50 m long and one 55 m long, all measuring 2 m wide. The evaluation across the flood zone will comprise 22 trenches measuring 50 m long and one 15 m long, all measuring 2 m wide (Figure 1).

- 6.6 All machine excavation of trenches will be supervised by a GUARD Archaeologist. The machine excavator will be fitted with a c 2 m wide flat-bladed (toothless) ditching bucket.
- 6.7 The topsoil at each trench location will be removed in spits to the first archaeological horizon or, where none was found, to the natural subsoil. Any archaeological features encountered will be cleaned by hand by the on-site Archaeologist to determine their character and extent.
- 6.8 Any significant archaeological features encountered will be dealt with by the on-site Archaeologist. Should negative-cut features be encountered, a representative sample will be 25-50% excavated in order to determine their significance, date and function. A full record of excavated features will be made using a single context recording system using pro forma sheets, drawings and photographs. All archaeological features will be photographed and recorded at an appropriate scale. Sections will be drawn at 1:10, and plans at 1:20. All trenches will be accurately surveyed using a sub-metre GPS and located within the National Grid.
- 6.9 All archaeological finds will be dealt with by the on-site Archaeologist. Finds and animal bone will be collected as bulk samples by context. Significant small finds will be three dimensionally located prior to collection. All finds will be processed to MAP2 type standards and subject to appropriate specialist assessment. If necessary, conservation of finds will be appraised to allow for specialist study.
- 6.10 All excavated feature fills and horizons will be sampled as appropriate, using bulk soil samples, for palaeo-environmental evidence.
- 6.11 A representative section will be recorded denoting depth of topsoil, any stratigraphy present and the nature of the soil. This information will be logged in the day book together with a sketch drawn to scale and a photographic record of deposits.
- 6.12 Should human remains be revealed by the excavation, the local police, the client and the CECAS will be informed immediately. Any human remains will be accurately recorded, but left in situ, pending the agreement of the police, the client and CECAS on an appropriate mitigation strategy.
- 6.13 Should significant archaeological remains be encountered within any of the trenches proposed, the area of investigation may be expanded, in consultation with the client and CECAS, with the aim of defining the character and extent of the archaeological features.
- 6.14 CECAS will be the final judge of significance regarding any findings and may well insist on full excavation for any features to be destroyed by the proposals.
- 6.15 Should significant archaeological remains be encountered by the evaluation, requiring more than the evaluation outlined above, the remains will be largely left in situ pending the agreement of the clients and CECAS on a WSI addenda for an appropriate scope of excavation (Stage 2) and Post-excavation design including scope of finds analysis, conservation & publication (Stage 3).
- 6.16 On completion of the recording of each evaluation trench, it will be immediately backfilled by machine. No specialist backfilling is proposed, nor will the backfilling of trenches be supervised by the on-site archaeologist.

Report Preparation and Contents

- 7.1 A report detailing the results of the archaeological fieldwork will be submitted to the client within two to four weeks of completion of fieldwork and, subject to client approval, then submitted to CECAS. The report will take the form of a Data Structure Report and will contain an analysis of the results of the metal detecting survey and evaluation. The report will include a full descriptive text that will characterise the date and extent of any archaeological deposits. It will also include plans at an appropriate scale showing the distribution of any artefacts from the metal detecting survey, evaluation trenches, archaeological features and will include archiving lists of all finds, samples, field drawings and photographs.
- 7.2 If appropriate, the report will be accompanied by an addendum to this WSI for further archaeological fieldwork, should significant archaeology have been encountered.
- 7.3 The report will include the following:

- executive summary;
 - a site location plan to at least 1:10,000 scale with at least an 8-figure central grid reference;
 - OASIS reference number; unique site code;
 - Planning application number;
 - contractor's details including date work carried out;
 - nature and extent of the proposed development, including developer/client details;
 - description of the site history, location and geology;
 - a site plan to a suitable scale and tied into the national grid so that features can be correctly orientated;
 - discussion of the results of field work;
 - context & feature descriptions;
 - features, number and class of artefacts, spot dating & scientific dating of significant finds presented in tabular format;
 - plans and section drawings of the features drawn at a suitable scale;
 - initial assessment of relevant finds/samples if appropriate;
 - recommendations regarding the need for, and scope of, any further archaeological work such as excavation (Stage 2) and Post-excavation finds analysis, conservation & publication (Stage 3);
 - bibliography.
- 7.4 At least two copies of the report will be prepared for the client and a further digital PDF copy sent to CECAS.
- 7.5 The DSR is to be submitted to the client within 2 to 4 weeks of fieldwork completion, any PERD within 3 months of agreement to the DSR and any final publication within a year of agreement to the PERD.
- 7.6 The report will be presented in an ordered state and contained within a protective cover/sleeve or bound in some fashion. The report will be page numbered and supplemented with section numbering for ease of reference.

Copyright

- 8.1 Unless otherwise agreed copyright for any report resulting from the archaeological work undertaken as part of the project will be deemed the intellectual property of GUARD Archaeology Limited.

Publication

- 9.1 A summary of the project results will be submitted to *Discovery and Excavation in Scotland*. In the event of minor archaeological remains being encountered during the archaeological fieldwork, it is proposed that a comprehensive report submitted to *Discovery and Excavation in Scotland*, will form the final publication of the site. A copy of this will be included in the Data Structure Report.

Archive

- 10.1 The archive for the project, including a copy of the report, will be submitted to the National Record of the Historic Environment within three months of completion of all relevant work.
- 10.2 The online OASIS form at <http://ads.ahds.ac.uk/project/oasis/> will be completed within 3 months of completion of the work. Once the Data Structure Report has become a public document by submission to or incorporation into the SMR, CECAS will validate the OASIS form thus placing the information into the public domain on the OASIS website.

Finds Disposal

- 11.1 The arrangement for the final disposal of any finds made in connection with the archaeological work, will be deposited in keeping with Scottish legal requirements as set out in the Treasure Trove Code of Practice published by the Scottish Government in January 2016. The laws relating to Treasure Trove and *Bona Vacantia* in Scotland apply to all finds where the original owner cannot be identified. This includes all material recovered during archaeological fieldwork. Accordingly, all assemblages recovered from archaeological fieldwork are claimed automatically by the Crown and must be reported to the Scottish Archaeological Finds Allocation Panel through its secretariat, the Treasure Trove Unit. In the event of the discovery of small finds, a filled-out copy of the form "Declaration of an Archaeological Assemblage from Fieldwork" and two copies of the pertinent Data Structure Report will be submitted to the Panel at the conclusion of the fieldwork. The Panel will then be responsible for recommending to the Queen's and Lord Treasurer's Remembrancer which museum should be allocated the finds. All artefacts will be temporarily stored by GUARD Archaeology until a decision has been made by the panel.
- 11.2 The City of Edinburgh Council (CEC) require that, after finds are allocated to them, that the finds bags and boxes are numbered in accordance with accession numbers issued by CEC.

Personnel and Liaison

- 12.1 The GUARD Archaeology team will comprise the following qualified and experienced GUARD archaeologists:
- Project Manager: Warren Bailie
 - Project Director (on-site Archaeologist): Jamie Henderson
 - Survey Archaeologist: Dave McNicol
 - Archaeologists: TBC
 - Finds and Environmental Support and Conservation: Aileen Maule
 - Illustrator: Gillian Sneddon
 - Quality Assurance: Dr John Atkinson
- 12.2 The GUARD Archaeology Project Manager, Warren Bailie, will be the point of contact for the archaeological works. A full CV for individuals concerned can be made available on request.

Monitoring

- 13.1 The proposed start for the archaeological fieldwork is the 23rd of April 2018. CECAS will be informed of the site mobile phone number prior to the start date so that monitoring visits can be arranged. It is envisaged that the metal detecting survey and archaeological evaluation will take approximately 35 days to complete, including backfilling.

Health & Safety and Insurance

- 14.1 GUARD Archaeology Ltd adheres to the guidelines and standards prescribed for archaeological fieldwork set down in the Institute for Archaeologists approved Health and Safety in Field Archaeology document, prepared under the aegis of the Standing Conference of Archaeological Unit Managers (SCAUM). It is standard GUARD Archaeology policy, prior to any fieldwork project commencing, to conduct a risk assessment and to prepare a project safety plan, the prescriptions of which will be strictly followed for the duration of all archaeological fieldwork. Copies of the resultant project safety plan and of GUARD Archaeology's Fieldwork Safety Policy Statement may be viewed upon request.

- 14.2 GUARD Archaeology Ltd also possesses all necessary insurance cover, proofs of which may be supplied upon request.

Sources Consulted

Rennie, C 2017 *Chapter 13: Cultural Heritage, West Craigs North, Edinburgh*. GUARD Archaeology Project 4753. Unpublished report

<http://pastmap.org.uk/> accessed 27/10/2017

<http://www.rcahms.gov.uk/> accessed 27/10/2017

GUARD Archaeology Limited
52 Elderpark Workspace
100 Elderpark Street
Glasgow
G51 3TR

Tel: 0141 445 8800

Fax: 0141 445 3222

email: info@guard-archaeology.co.uk



www.guard-archaeology.co.uk