



**West Edge, Lang Loan, Edinburgh**  
**Data Structure Report**  
**Project 4995**

## West Edge, Lang Loan, Edinburgh Data Structure Report

**On behalf of:** Bellway Homes and Miller Homes

**NGR:** NT 2898 6771

**Project Number:** 4995

**Report by:** Jamie Henderson

**Illustrations:** Jennifer Simonson

**Project Manager:** Christine Rennie

<b>DRAFT</b>  29/11/18	Christine Rennie Project Manager	<b>FINAL</b>  24/01/19	John Atkinson Managing Director
			

*This document has been prepared in accordance  
with GUARD Archaeology Limited standard operating procedures.*

**GUARD Archaeology Limited**  
52 Elderpark Workspace  
100 Elderpark Street  
Glasgow  
G51 3TR

**Tel: 0141 445 8800**  
**Fax: 0141 445 3222**  
**email: [info@guard-archaeology.co.uk](mailto:info@guard-archaeology.co.uk)**



[www.guard-archaeology.co.uk](http://www.guard-archaeology.co.uk)

## Contents

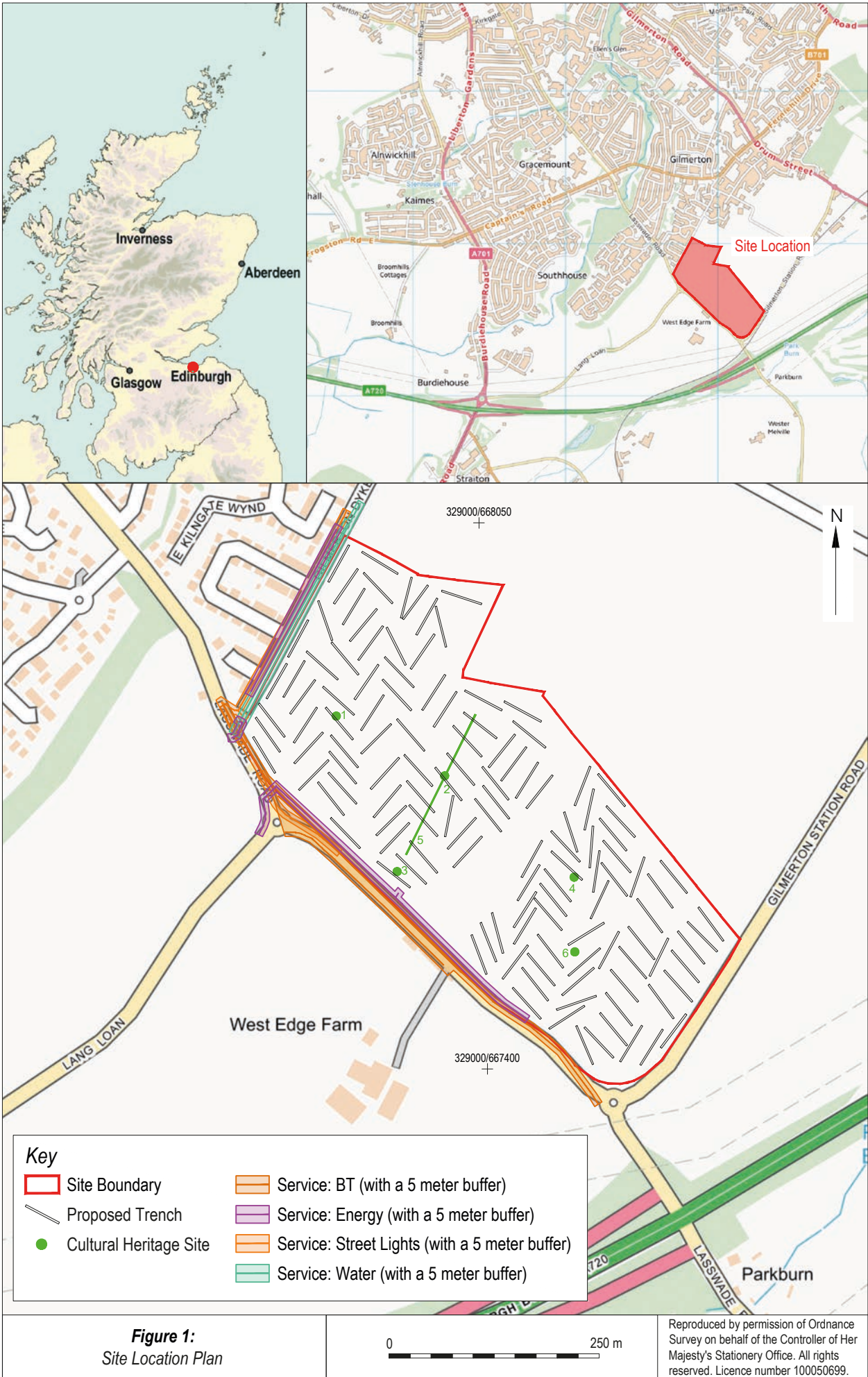
Executive Summary	5
Introduction	5
Site Location, Topography and Geology	5
Archaeological Background	5
Aims and Objectives	6
Methodology	7
Metal Detecting Survey	7
Archaeological Evaluation	7
Results	7
Metal Detecting Survey	7
Archaeological Evaluation	9
Discussion	10
Metal detecting	10
Evaluation	13
Conclusions	13
Acknowledgements	13
Technical Information	13
Appendices	15
Appendix A: References	15
Appendix B: GUARD Archaeology Archive Material	15
Appendix C: List of contexts	15
Appendix D: List of finds	16
Appendix E: List of trenches	17
Appendix F: List of photographs	25
Appendix G: Discovery and Excavation Scotland Entry	36
Appendix H: Written Scheme of Investigation	37

## List of Figures

Figure 1: Site location plan	4
Figure 2: Locations of retained metal finds	8
Figure 3: Trench locations and archaeological features at north of site	11
Figure 4: Trench locations and archaeological features at south of site	12

## List of Plates

Plate 1: Lead seal SF 583.	9
Plate 2: Lead seal SF 455.	9
Plate 3: Possible mineshaft in trench 121.	9
Plate 4: Wall 020 in trench 5. From south-east.	10
Plate 5: Mid-excavation view of wall 016 in trench 18. From north-east.	10
Plate 6: Wall 032 in trench 79; From north-east.	10
Plate 7: Pre-excavation view of circular wall 034 in trench 079. From south-east.	10



**Figure 1:**  
Site Location Plan

Reproduced by permission of Ordnance Survey on behalf of the Controller of Her Majesty's Stationery Office. All rights reserved. Licence number 100050699.

## Executive Summary

- 1.1 GUARD Archaeology Limited carried out a metal detecting survey and an archaeological evaluation on behalf of Miller Homes and Bellway Homes on an area proposed for development at West Edge, Lang Loan in the City of Edinburgh.
- 1.2 The metal detecting survey encountered a total of 1093 artefacts, 56 of which were retained. The artefacts retained included 14 coins, 10 buttons, three musket balls and three lead seals.
- 1.3 The trial trench evaluation comprised 7%, or 12,200 m<sup>2</sup>, of the total 17.39 ha area available for evaluation. The evaluation uncovered a series of walls, some of which may relate to the earlier settlement of Carthall, as well as the remains of rig and furrow cultivation and evidence for mining activity within the development area. The work was undertaken between 18th September and 26th October 2018.
- 1.4 The mitigation works required for the West Edge, Lang Loan, Edinburgh Development Area were carried out in accordance with condition 5 of the planning consent (Ref: 16/03895/PPP).

## Introduction

- 2.1 This report sets out the results of an archaeological evaluation and metal detecting survey undertaken by GUARD Archaeology, on behalf of Bellway Homes and Miller Homes on a site proposed for residential development and associated works at Lasswade Road, Edinburgh. The metal detecting survey over the site was followed by an archaeological trial trench evaluation during which a total of 12,200 m<sup>2</sup> of trenching undertaken. This amounted to 122 individual trenches arranged to target known or suspected archaeological features within the site.

## Site Location, Topography and Geology

- 3.1 The development area is located to the south of Gilmerton, Edinburgh (centred at NGR: NT 2898 6771). The total development area is 18.6 ha, forming one large field (Figure 1). The available area for metal detecting and evaluation, taking account of service buffers, was 17.39 ha. The development area is bounded to the west by Lasswade Road, and to the south by Gilmerton Station Road. To the north is existing housing and agricultural fields lie to the east; a current residential development is in progress to the south-west.
- 3.2 The terrain over the site slopes down from north to south. The bedrock over the site varies from north to south but consists of three types of limestone that date from the Carboniferous Period (approx. 328 to 331 million years ago). Lower Limestone Formation - Sedimentary Rock Cycles, Clackmannan Group Type is found at the north of the site and Limestone Coal Formation - Sedimentary Rock Cycles, Clackmannan Group Type at the south. These two rock types are separated by a band of Top Hosie Limestone.
- 3.3 The nature of the superficial deposits at the north of the site was not recorded by the British Geological Survey. At the south of the site was Till, Devensian – Diamicton which formed up to 2 million years ago in the Quaternary Period when the local environment was dominated by ice age conditions (British Geological Survey).

## Archaeological Background

- 4.1 An archaeological desk-based assessment of the development area was previously undertaken (Rennie 2016). In the mid-eighteenth century, the Site was demonstrably part of Gilmerton estate, which has a long history of land ownership dating back to the twelfth century. Good writes that:

*The lands of Gilmerton were cultivated or farmed out by David I . . . and they remained in the possession of the Crown until the time of Robert the Bruce. No charters exist of an earlier date than his reign, and those who occupied the lands were called the King's tenants (Good 1893, 105).*

- 4.2 The mansion house at Gilmerton, named as Gilmerton Place House, was not occupied by any of the proprietors “for upwards of 220 years” (Good 1893, 108). This house dates from about the mid sixteenth century, and was presumably built to replace the earlier Gilmerton House which, in 1547, was “traitorously delivered to the English, and by an Act it was ordered to be cast down” (Ibid).
- 4.3 In 1763, the small settlement named as Carthall was at least partly situated within the north part of the Site. By 1893, the hamlet had been “entirely cleared away” (Good 1893, 115). The cropmark of a rectangular structure (part of Site 1) lies towards the north of the site, and may represent a building within Carthall, or the remains of an un-related and previously unrecorded structure.
- 4.4 The lands of Gilmerton estate, including the development area, were long used for coal mining and for quarrying. Coal mining is known to have taken place on the lands at Gilmerton in 1427 (Good 1893, 110), and the industry was carried out:
- on a considerable scale in 1627, and in 1760 about eighty families were constantly employed, the output being from twenty to twenty-four thousand tons annually (Ibid 163).*
- 4.5 Good also reports that:
- In 1830 the Gilmerton coal mines were the deepest that had ever been made upon the edge levels or upon any of the coal fields in Scotland, and the first in which a railway was introduced for carrying the produce of edge-coal. [The engine pit in 1839 was] completed to the depth of 96 fathoms (Ibid 163).*
- 4.6 The Gilmerton mines:
- lay dormant for upwards of thirty years, when the Glasgow Coal and Iron Company leased them from Sir David Baird for a period of nineteen years. They are at present (1893) wrought by a company under the name of the Gilmerton Gas Coal Company (Ibid 164).*
- 4.7 On the quarrying of freestone, Good writes that the only sizeable freestone quarry in Liberton parish in the late-nineteenth century was at Gilmerton, where several seams were worked (Good 1893, 157). The location of this quarry is not known, but a sandstone quarry lay to the east of the Site in 1855 and, since the term freestone can be used to signify sandstone or limestone, it is possible that this is the quarry Good was referring to.

## Aims and Objectives

- 5.1 The aims of the archaeological evaluation were to identify:
- the extent, nature and, if possible, the date of known archaeological features within the development area; and
  - as yet unknown archaeological features and deposits within the development area.
- 5.2 The objectives were to:
- conduct an archaeological evaluation within the development area to establish the presence or absence of any archaeological remains, and their character, date and extent if surviving;
  - Conduct an archaeological metal detecting survey across the development area to establish the presence or absence of metal archaeological artefacts; and
  - Submit a report to data structure level for agreement of the CECAS on completion of the archaeological fieldwork, which includes an outline of the scope of any further excavation works should any significant archaeology be encountered.

## Methodology

6.1 All work was conducted in line with the following standards and guidance of the Chartered Institute for Archaeologists (CIfA):

- *Code of conduct* (2014);
- *Standard and guidance for archaeological field evaluation* (2014), and
- *Standard and guidance for the creation, compilation, transfer and deposition of archaeological archives* (2014).

### Metal Detecting Survey

6.2 The metal detecting survey of the development area was undertaken in order to establish the presence or absence of any metal artefacts that survive within the topsoil. Metal detecting was undertaken in 10 m transects aligned NE to SW across the development area. All retained significant artefacts detected during the survey were plotted using a sub-metre GPS and recovered using stratigraphically controlled keyhole excavation for identification and, if necessary, for further study. All finds encountered during metal detecting were assessed for identification by a suitably qualified and experienced archaeologist.

### Archaeological Evaluation

6.3 The metal detecting survey was followed by an archaeological evaluation of the development area comprising the machine excavation of trenches amounting to 7% (12,200 m<sup>2</sup>) of the available land after exclusion of services and appropriate buffers.

6.4 The evaluation comprised 122 trenches each measuring 50 m long and 2 m wide, which were located to specifically target known or suspected archaeological sites and to provide even coverage of the overall development area.

6.5 All machine excavation of trenches carried out using a mechanical excavator fitted with a c 2 m wide flat-bladed (toothless) ditching bucket and working under the supervision of the fieldwork director. All trenches were surveyed using a sub-metre GPS and located within the National Grid.

6.6 The topsoil at each trench location was removed in spits to the first archaeological horizon or, where none was found, to the natural subsoil. Any archaeological features encountered were cleaned by hand to determine their character and extent. A representative sample of each negative-cut feature was excavated in order to determine its significance, date and function.

## Results

### Metal Detecting Survey

7.1 All significant artefacts will be referred to in the text using the abbreviation SF (small find).

7.2 During the course of the survey, 1093 metal objects were recovered from the topsoil. Of these, 56 were identified as potentially significant and have been retained for possible further analysis (Figure 2).

7.3 The discarded artefacts included wire, agricultural machinery parts, modern nails and drinks can fragments. These were found throughout the survey area, although there was a higher density at the north end of the site.

7.4 A total of 14 coins were recovered during the metal detecting (SF 74, 101, 187, 234, 244, 245, 246, 320, 346, 531, 543, 629, 658, and 818). These were a mix of hammered and milled coins including an eighteenth-century George II penny (SF 245), an 1861 Victorian penny (SF 818) and a possible Charles II sixpence (SF 234). The remainder of the coin assemblage was very worn, making identification difficult without cleaning and specialist analysis.



Figure 2: Locations of retained metal finds.

- 7.5 Ten buttons (SF 86, 148, 190, 220, 231, 342, 452, 495, 740 and 814) were found; five with eyes and five with holes. The buttons measured between 24mm and 15 mm in diameter, and were of Cu alloy aside from SF 231, which was a ferrous based metal and SF 495, which was of lead.
- 7.6 Sixteen horseshoes or horseshoe parts (SF 211, 258, 264, 399, 471, 599, 628, 703, 776, 789, 796, 810, 816, 828, 845 and 972), two stirrups (SF 081 and 558), and one possible horse fastening (SF 030) were recovered from the site.
- 7.7 Of particular significance were the three lead musket balls (SF 138, 225 and 333) and three lead seals (SF 454, 455 and 583) recovered from the site. The largest of the seals (SF 583; Plate 1) was folded in half and measured 35 mm by 30 mm (folded). It was clearly used to identify some type of material that was weighed as the inscription on the seal read "Edin Cw. Lb. S. F. RDS". Circular seal SF 454 was 20 mm in diameter and was imprinted "H W LAN" "REINB" on one side and "LANGE" "INBECK" on the other. SF 455 (Plate 2) was also circular, measuring 18 mm in diameter. It had four anchors impressed on one side with the words "ELISABEI DAMPF UHL BUDAPEST E3FLLSC AFT".





Plate 1: Lead seal SF 583.



Plate 2: Lead seal SF 455.

- 7.8 Other finds were two small pieces of decorated lead (SF 135 and SF 453). SF 135 was a small piece of flat lead imprinted with a Fleur-de-lis and SF 453 was a small oval piece, shaped and imprinted to resemble a frog. Four copper alloy buckles (SF 111, 633, 669 and 1048) were also recovered during the metal detecting survey.

### Archaeological Evaluation

- 7.9 Over the site, topsoil 001 was moderately compact mid to dark brown silty clay with plant roots that varied in thickness from 0.25 m to 0.40 m. The subsoil was firm mid to dark orange/brown silty clay with occasional gravel inclusions. Across the site occasional bands of limestone bedrock and coal were found running in a north-east to south-west alignment.
- 7.10 The remains of rig and furrow cultivation (006) was encountered in 23 trenches in the northern part of the site. The furrows were aligned north-west to south-east and were spaced between 0.8 m and 1.4 m apart. The fill of the furrows (005) was mid brown clayish silt with occasional flecks of coal and modern ceramics and was between 0.2 m and 0.3 m thick.

- 7.11 Twelve possible mine shafts were uncovered in the trenches. These were identifiable as circular or broadly circular features that had been cut into the subsoil. Single shafts were found in trenches 012, 093, 094, 095, 098, 104 and 121, two possible shafts in trench 122 and three possible shafts were uncovered in trench 102. The possible shaft in trench 012 was circular, approximately 2.2 m in diameter and was filled with loose coal dust and coal. The shaft in trench 093 was approximately 3.3 m in diameter and was filled with a mid- brown silty clay. The shaft in trench 094 was 3.8 m in diameter with a fill of brown/grey silty clay and that in trench 095 was 4 m wide and was filled with a black/brown silty clay. The shaft in trench 098 was 2.6 m in diameter and had a fill of ashy brown silt with inclusions of coal dust. Trench 102 contained three possible mine shafts all approximately 3 m in diameter and filled with mottled dark brown silty clay. Trench 104 contained a 7.4 m diameter mineshaft with a fill of dark brown silty clay that included gravel. Trench 121 contained a mineshaft 4.4 m in diameter that had a dark brown silty clay and gravel fill. Trench 122 contained two possible mine shafts; one was 3.5 m in diameter with a mottled brown/grey fill of silty clay (Plate 3) and the other was approximately 4.2 m in diameter and was filled with brown/grey ashy coal dust.



Plate 3: Possible mineshaft in trench 121.

7.12 Six walls were uncovered over the course of the evaluation which point to structures having existed on the site. L-shaped wall 020 in trench 005 ran north/south before turning east/west (Plate 4). The wall was investigated and was found to comprise three courses of unbonded limestone. Linear wall 016 in trench 018 was aligned east/west and was at least 0.3 m in height (Plate 5). In trench 079 a limestone wall (032: Plate 6) was 0.4 m to 0.45 m wide and was aligned north-east/south-west. An evaluation slot revealed that its foundation cut (033) was 70 mm deep and that it was filled with sub-angular unbonded limestone. Also in trench 079 was a section of a circular wall 034 (Plate 7) which was constructed in limestone. The fill contained by the circular wall was mid-brown silty clay with occasional coal and gravel (035) which was tested to a depth of 0.4 m during the evaluation.



Plate 4: Wall 020 in trench 5. From south-east.



Plate 5: Mid-excavation view of wall 016 in trench 18. From north-east.



Plate 6: Wall 032 in trench 79; From north-east.



Plate 7: Pre-excavation view of circular wall 034 in trench 079. From south-east.

## Discussion

### Metal detecting

- 8.1 The metal detecting survey has shown that a fairly wide range of artefacts survived within the topsoil across the site. The overwhelming volume of the artefacts were metal objects derived from the more recent agricultural use of the site. The spatial distribution of the artefacts, with a larger volume recovered from the northern part of the site, correlates with the location of the hamlet of Carthall as shown on Laurie's 1763 map.
- 8.2 Of the more significant artefacts, the legible coins date from the seventeenth to the nineteenth centuries. The latter date corresponds to the known period of occupation of Carthall hamlet. The lead seals are indicative of trade in cloth or other raw materials and the recovery of a seal from Budapest (SF 455) suggests that trade with Eastern Europe was taking place at some point in the relatively recent past.

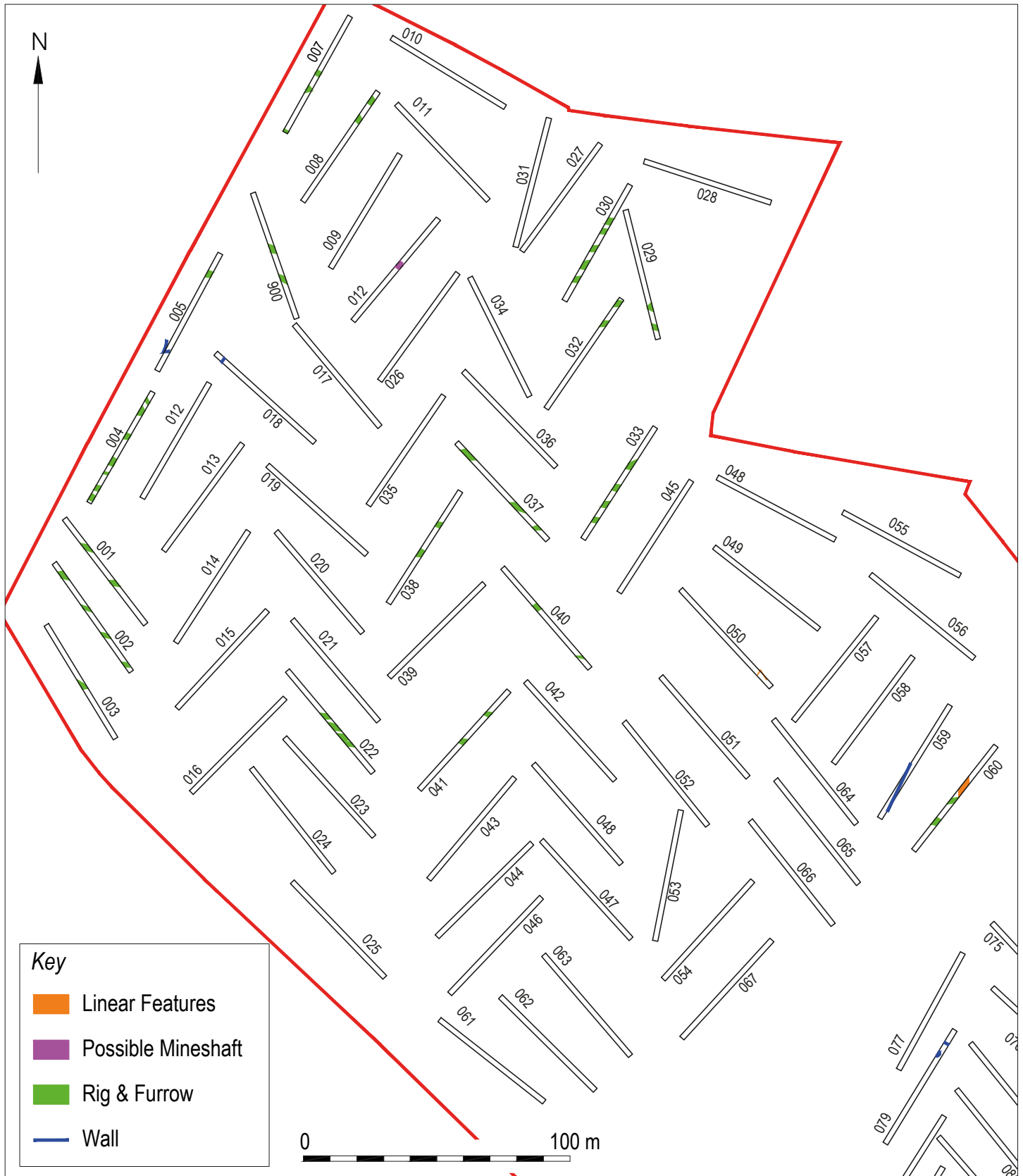


Figure 3: Trench locations and archaeological features at north of site.

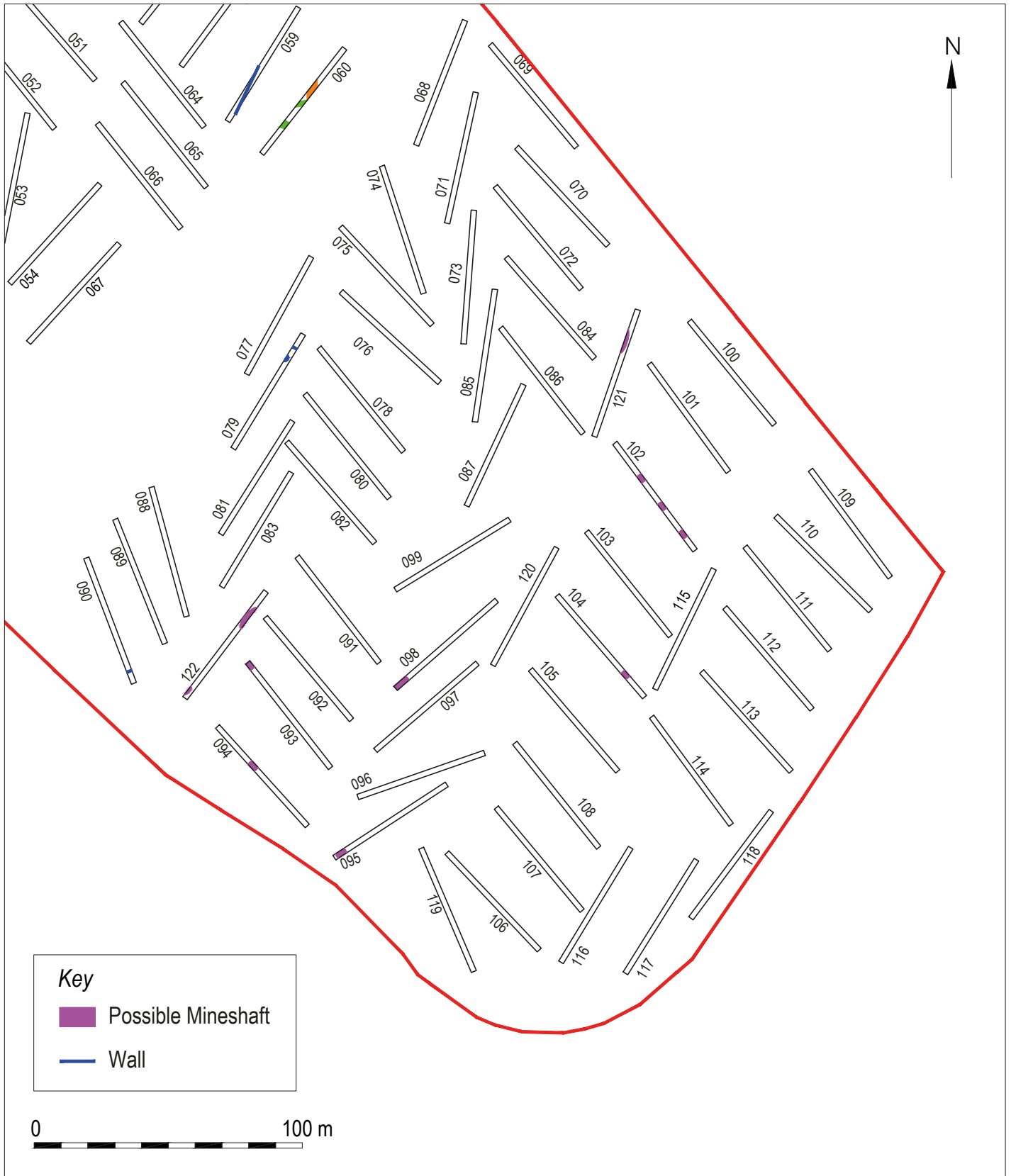


Figure 4: Trench locations and archaeological features at south of site.

## Evaluation

- 8.3 The evaluation has demonstrated that there are industrial remains and possible settlement remains surviving within the Site.
- 8.4 Walls 016 and 020 investigated in trenches 018 and 005 respectively may form part of the same structure. Given their location at the north of the site, these walls could represent the buried remains of part of the Carthall hamlet. A wall (034) in trench 079 is particularly interesting as it appears to describe a circular feature that, with a diameter of over 1 m, would have been too large to be a well. The wall defining the edge of this feature may have been an attempt to consolidate the upper edges of a mining pit, although this was not a characteristic of any of the other twelve possible mineshafts.

## Conclusions

- 9.1 The evaluation has established the presence of what remains of archaeological features and structures related to known uses of the site in recent centuries for agriculture, settlement (Hamlet of Carthall) and mining. This report, and the investigation, recording and mapping of the features uncovered during this evaluation, provides adequate information to improve our understanding of the use of the site in recent centuries. However, CECAS may require conservation and further analysis on the various retained metal items relating to the site's recent agricultural and industrial past.
- 9.2 GUARD Archaeology Limited would stress that the final decision on the requirement for any further archaeological work rests with the planning authority.

## Acknowledgements

- 10.1 GUARD Archaeology Limited would like to thank Henry Harper of Bellway Homes and Tom Cahill of Miller Homes, for commissioning the metal detecting survey and evaluation and for their assistance before and during the fieldwork. Plant and drivers were supplied by Macmillan Plant Hire. Technical support was from Clark Innes. The illustrations were produced by Jennifer Simonson. The report was desk top published by Gillian Sneddon. The project was managed for GUARD Archaeology Limited by Christine Rennie.

## Technical Information

- 11.1 The paper and digital archive for the archaeological evaluation will be lodged with the National Record of the Historic Environment. The list of archive material can be found at Appendix A.
- 11.2 All elements of the assessment have been undertaken in line with the following policies and guidelines of the Chartered Institute for Archaeologists of which GUARD Archaeology Ltd is a Registered Organisation.
- *Code of Conduct* (2014), and
  - *Standard and Guidance for Standard and guidance for archaeological field evaluation* (2014).
- 11.3 The Chartered Institute for Archaeologists requires that information pertaining to archaeological fieldwork is made publicly available via the OASIS project. The project aims to provide an on-line index to otherwise inaccessible archaeological grey literature, such as this data structure report. The online OASIS form for this project (OASIS Reference: guardarc1-333209) has been completed. Once this report has been agreed by CECAS, and with the consent of Bellway Homes and Miller Homes, the report will be uploaded to OASIS. CECAS will then validate the OASIS form thus placing the information into the public domain. OASIS can be accessed at <http://ads.ahds.ac.uk/project/oasis/>

**West Edge, Lang Loan, Edinburgh  
Data Structure Report**

**Section 2: Appendices**



[www.guard-archaeology.co.uk](http://www.guard-archaeology.co.uk)

## Appendices

### Appendix A: References

British Geological Survey: Geology of Britain viewer. Available at <https://www.bgs.ac.uk>

Good, G 1893 *Liberton in ancient and modern times*. Edinburgh: Andrew Elliot.

Laurie, J 1763 *A plan of the county of Mid-Lothian*. Edinburgh

National Record of the Historic Environment. Available at <https://pastmap.org.uk>

Rennie, C 2016 *Lasswade Road, City of Edinburgh: Desk-based Cultural Heritage Assessment*. GUARD Archaeology unpublished report; Project 4325.

Whyte, T 1792b 'Parish of Liberton' in *The Statistical Account of Scotland, Vol. 6*, 506-509.

### Appendix B: GUARD Archaeology Archive Material

	Description	Format	Number
Paper archive	Context index	A4 card	1 sheet
	Context sheet	A4 card	31 sheets
	Photographic record	A4 card	23 sheets
	Drawing Record	A4 card	1 sheet
	Finds index sheets	A4 card	31 sheets
	Trench record sheet	A4 card	122 sheets
	Site daybook	A4 paper	1 sheet
	Drawing Sheets	A3 Permatrace	2 sheets
Digital archive	Digital photographs	JPEG	587
	Data Structure Report	PDF	1
	AutoCAD files	.dwg	2

### Appendix C: List of contexts

Context No	Area	Description	Interpretation
001		Topsoil	-
002		Subsoil	-
003	Tr 18	Sub-circular cut measuring 0.89 m by 0.4 m and 0.27 m deep. Sides slope to a concave base.	Cut of pit
004	Tr 18	Dark brow to black sandy silt with occasional pebbles.	Fill of pit 003
005			Cut of cultivation furrow
006			Fill of furrow 005
007	Tr 18	Friable dark grey/black silty sand with frequent angular pebbles	Spread
008	Tr 18	Circular cut measuring 0.63 m by 0.6 m and 0.15 m deep. Sides slope steeply to a concave base.	Cut of pit
009	Tr 18	Friable mid brown/grey sandy silt with occasional pebbles.	Fill of pit 008
010		-	Modern SI
011		-	Fill of modern SI pit
012		Compacted mid brown sandy clay with coal flecks.	Spread
013		-	SI pit
014		None given	Cut of pit
015		Brown sandy clay with pebbles.	Fill of 014
016		Drystone sandstone/limestone wall	Wall
017		Loose dark brown sandy silt.	Spread
018		Grey clay	Slot trench.
019		Light brown/orange clay with pebbles. More than 0.13 m thick	Fill of slot for wall 020
020		Linear drystone wall. More than 0.45 m deep	Wall
021		Light brown clay. More than 0.19 m thick	Fill of slot for wall 020

Context No	Area	Description	Interpretation
022		Light brown/grey silty clay with pebbles.	Fill of slot for wall 020
023		-	Cut of pit
024		Dark brown/black silty clay with angular pebbles.	Fill of pit 023
025		Orange/light brown clay.	Fill of pit 023
026		Rectangular cut 1.0 m by 0.37 m and more than 0.2 m deep	Cut related to mining activity
027		Grey clay	Fill of cut 026
028		Circular cut 0.6 m in diameter and more than 0.18 m deep	Cut related to mining activity
029		Grey/brown silt with pebbles and gravel. 0.18 m thick	Fill of cut 028
030		-	Cut related to mining activity
031		Grey/brown silt sand with pebbles and gravel.	Fill of cut 030
032	079	Firmly compacted mid to dark brown/grey mottled silty clay with gravel and small cobbles. Extend for full width of trench and is 0.85 m wide and 70 mm thick.	Possible wall foundation
033	079	Linear cut greater than 2 m long, 0.85 m wide and 77 mm deep.	Cut for possible wall 032
034		-	Circular cut for wall
035		Mid brown silty clay with pebbles and gravel. At least 0.4 m thick	Fill of circular wall feature 034

## Appendix D: List of finds

Find No	Area	Context No	No of Pieces	Material	Type	Description
030		001	1	Metal	Fe	Possible horse fastening
074		001	1	Metal	Brass	Possible coin
081		001	1	Metal	Fe	Stirrup
101		001	1	Metal	Pb	Coin
111		001	1	Metal	Cu alloy	Harness boss
135		001	1	Metal	Pb	Pb decorated
138		001	1	Metal	Pb	Musket ball
148		001	1	Metal	Cu	Copper button
187		001	1	Metal	Cu alloy	Coin
190		001	1	Metal	Cu alloy	Button
211		001	1	Metal	Fe	Horseshoe part
220		001	1	Metal	Cu alloy	Button
225		001	1	Metal	Pb	Musket ball
231		001	1	Metal	Cu alloy/Al?	Button
234		001	1	Metal	Cu alloy	Coin
244		001	1	Metal	Cu alloy?	Coin
245		001	1	Metal	Cu alloy	Coin
246		001	1	Metal	Cu alloy?	Coin
258		001	1	Metal	Fe	Horseshoe part
264		001	1	Metal	Fe	Horseshoe part
320		001	1	Metal	Cu alloy	Coin
333		001	1	Metal	Pb	Musket ball
342		001	1	Metal	Cu alloy	Button
346		001	1	Metal	Cu alloy	Coin
399		001	1	Metal	Fe	Horseshoe part
451		001	1	Metal	Cu alloy	?
452		001	1	Metal	Cu alloy	Button
453		001	1	Metal	Pb	Frog decoration
454		001	1	Metal	Pb	Seal
455		001	1	Metal	Pb	Seal
471		001	1	Metal	Fe	Horseshoe part
495		001	1	Metal	Pb	Button



Find No	Area	Context No	No of Pieces	Material	Type	Description
531		001	1	Metal	Cu alloy	Coin
534		001	1	Metal	Cu alloy	Coin
558		001	1	Metal	Fe	Stirrup
583		001	1	Metal	Pb	Seal?
599		001	1	Metal	Fe	Horseshoe part
628		001	1	Metal	Fe	Horseshoe part
629		001	1	Metal	Cu alloy	Coin
633		001	1	Metal	Cu alloy	Buckle
658		001	1	Metal	Cu alloy	Coin
669		001	1	Metal	Cu alloy	Buckle
703		001	1	Metal	Fe	Horseshoe part
740		001	1	Metal	Fe?	Button
776		001	1	Metal	Fe	Horseshoe part
789		001	1	Metal	Fe	Horseshoe part
796		001	1	Metal	Fe	Horseshoe
810		001	1	Metal	Fe	Horseshoe part
814		001	1	Metal	Cu alloy	Button
816		001	1	Metal	Fe	Horseshoe part
818		001	1	Metal	Cu alloy	Coin
828		001	1	Metal	Fe	Horseshoe part
845		001	1	Metal	Fe	Horseshoe part
972		001	1	Metal	Fe	Horseshoe part
1048		001	1	Metal	Cu alloy?	Boss

### Appendix E: List of trenches

Tr No	Length (m)	Width (m)	Depth (m)	Topsoil/Overburden	Subsoil	Details	Intermediate Deposit
001	50	2	0.4	Blackish brown sandy clay with coal and modern ceramic inclusions. Depth 0.4 m.	Orange brown clay with occasional subangular stone inclusions	2 cultivation furrows	-
002	50	2	0.37	Blackish brown sandy clay. Depth 0.37 m.	Orange clay.	4 cultivation furrows	-
003	50	2	0.37	Blackish brown sandy clay. Depth 0.37 m.	Orange brown clay/ silty clay with bedrock inclusions.	1 cultivation furrow	-
004	50	2	0.36	Blackish brown sandy clay. Depth 0.36m.	Brownish orange clay.	8 cultivation furrows	-
005	50	2	0.32	Blackish brown sandy clay. Depth 0.32m.	Brownish orange silty clay. Occasional subangular stone inclusion.	1 wall; 1 cultivation furrow	-
006	50	2	0.36	Blackish brown silty clay. Depth 0.36m.	Orange brown clay.	No archaeology	-
007	50	2	?	Dark brown silty clay. Depth 0.27m.	Orange brown w/ mid brown band clay. Some bedrock inclusions.	1 cultivation furrow	-
008	50	2	0.25	Mid-brown silty clay. Depth 0.25m.	Orange and mid brown clay, and silty clay. Gravel inclusions.	2 cultivation furrows	-
009	50	2	0.27	Blackish brown sandy clay. Depth 0.27m.	Dark brown silty clay, large stone patches/ bedrock.	No archaeology	-
010	50	2	0.35	Dark brown sandy clay. Depth 0.35m.	Orange brown silty clay.	No archaeology	-

Tr No	Length (m)	Width (m)	Depth (m)	Topsoil/Overburden	Subsoil	Details	Intermediate Deposit
011	50	2	0.28	Dark brown sandy clay. Depth 0.28m.	Mottled dark brown w/ yellow, orange and brown sandy clay. Sub rounded and sub angular stone inclusions.	No archaeology	-
012	50	2	0.27	Blackish brown sandy clay. Depth 0.27m.	Dark brown with purple patches, sandy clay with bedrock inclusions.	1 possible mine shaft	-
013	50	2	0.37	Blackish brown sandy clay. Depth 0.37 m.	Purple/ orange-brown sandy clay w/ bedrock inclusions.	No archaeology	-
014	50	2	0.22	Dark brown sandy clay. Depth 0.22m.	Brownish orange silty clay. Bedrock inclusions.	No archaeology	-
015	50	2	0.24	Mid-dark brown sandy clay. Depth 0.24m.	Dark orange-brown silty clay. Occ. Sub round stone and gravel inclusions.	No archaeology	-
016	50	2	0.26	Blackish brown silty clay. Depth 0.26m.	Dark brown clayish silt. Sub-round stone and gravel inclusions.	No archaeology	-
017	50	2	0.24	Blackish brown sandy clay. Depth 0.24m.	Purplish brown sandy clay. Frequent bedrock inclusion.	No archaeology	-
018	50	2	0.25	Dark brown sandy clay. Depth 0.25m.	Dark orange-brown sandy clay. Sub round stone and gravel inclusions.	1 wall	-
019	50	2	0.32	Dark blackish brown silty clay. Depth 0.32m	Dark orange brown sandy clay, sub round stone and gravel inclusions.	No archaeology	-
020	50	2	0.26	001. Blackish brown sandy clay. Depth 0.26m.	002. Dark orange brown silty clay. Sub round stone and gravel inclusions.	No archaeology	-
021	50	2	0.25	001. Blackish brown sandy clay. Depth 0.25m	002. mottled ?	No archaeology	-
022	50	2	0.36	Blackish brown sandy clay.	Dark orange brown with purple sandy clay. Frequent bedrock and gravel inclusions.	No archaeology	-
022a	50	2	0.32	Blackish brown sandy clay. Depth 0.32m.	Orange brown w/ purple clay. Bedrock inclusions.	4 cultivation furrows	-
023	50	2	0.31	Blackish brown sandy clay. Depth 0.31m.	Orange brown clay, bedrock inclusions.	1 cultivation furrow	-
024	50	2	0.32	Dark brown sandy clay. Depth 0.32m	Orange brown silty clay. Sub-round stone and gravel inclusions.	No archaeology	-
025	50	2	0.33	Dark brown sandy clay. Depth 0.33m	Orange brown sandy clay. Occ. Sub round stone and gravel inclusions.	No archaeology	-
026	50	2	0.36	Dark brown sandy clay. Depth 0.36m.	Brownish orange clay. Bedrock and gravel inclusions.	No archaeology	-

Tr No	Length (m)	Width (m)	Depth (m)	Topsoil/Overburden	Subsoil	Details	Intermediate Deposit
027	50	2	0.31	Dark brown silty sand. Depth 0.31m	Orange brown sandy clay, bedrock inclusions.	No archaeology	-
028	50	2	0.28	Dark brown, sandy clay. Depth 0.28m.	Orange brown sandy clay. Sub rounded stone and gravel inclusions	No archaeology	-
029	50	2	0.31	Dark blackish brown sandy clay. Depth 0.31m.	Orange brown sandy clay. Sub-round stone and gravel inclusions.	2 cultivation furrows	-
030	50	2	0.27	Dark orangish brown modern. Depth 0.27m.	Brownish orange clay. Occ. Sub round stone and gravel inclusions.	4 cultivation furrows	-
031	50	2	0.31	Dark orangish brown silty sand. Depth 0.31m	Brownish red sandy clay. V. frequent sandstone bedrock inclusions.	No archaeology	-
032	50	2	0.27	Dark brown sandy clay. Depth 0.27m	Orange brown silty clay. Gravel inclusions.	2 cultivation furrows	-
033	50	2	0.34	Blackish brown sandy clay. Depth 0.34m.	Dark orange brown silty sand. Sub-rounded stone and gravel inclusions.	2 cultivation furrows	-
034	50	2	0.35	Dark greyish brown sandy clay. Depth 0.35m	Orange brown clay with purple bands. Gravel inclusions.	No archaeology	-
035	50	2	0.37	Dark brown silty clay. Depth -0.37m.	Purplish brown silty clay. V. frequent bedrock and gravel inclusions.	No archaeology	-
036	50	2	0.37	Dark brown sandy clay. Depth 0.37m.	Yellowish brown silty clay with gravel inclusions.	No archaeology	-
037	50	2	0.34	Orangish brown silty clay. Depth 0.34m	Yellowish brown clay. Sub rounded stone and gravel inclusions.	No archaeology	-
038	50	2	0.33	Orangish brown silty clay. Depth 0.33m	Orangish brown clay. Sub rounded stone and gravel inclusions.	2 cultivation furrows	-
039	50	2	0.35	Greyish brown silty clay. Depth 0.35m.	Dark orange brown silty clay. Gravel inclusions.	No archaeology	-
040	50	2	0.3	Dark brown. Depth 0.3m.	Orange brown silty clay. Gravel and bedrock inclusions.	3 cultivation furrows	-
041	50	2	0.31	Dark brown silty clay. Depth 0.31m.	Orange brown silty clay. Gravel inclusions.	2 cultivation furrows	-
042	50	2	0.29	Greyish brown silty sand. Depth 0.29m.	Orange brown silty clay, sub rounded stones and gravel inclusions.	1 cultivation furrow	-
043	50	2	0.31	Dark brown silty sand. Depth 0.31m	Orange brown silty clay. Sub-round stone and gravel inclusions.	No archaeology	-
044	50	2	0.29	Dark brown silty clay. Depth of 0.29m.	Orange brown silty clay. Subrounded stone inclusions.	No archaeology	Dark brown silty clay. Tested to 1.2m. CBM, oyster shell inclusions.

Tr No	Length (m)	Width (m)	Depth (m)	Topsoil/Overburden	Subsoil	Details	Intermediate Deposit
045	50	2	0.43	Blackish brown sandy clay. Depth of 0.43.	Brown and yellowish white sand. Limestone bedrock inclusions.	No archaeology	-
046	50	2	0.34	Dark brown silty clay. Depth 0.34m.	Orange brown clay with coal bands. Large amounts of bedrock inclusion.	No archaeology	Black with dark brown band over top. Gravelly clay. Frequent crunched bone and charcoal.
047	50	2	0.26	Dark brown silty clay. Depth 0.26m	Orange brown silty clay, bedrock and gravel inclusions.	No archaeology	Mottled purple and black silty clay. Lots of modern debris. Dump, tested to depth of 0.4m.
048	50	2	0.33	Dark brown sandy clay. Depth 0.33m.	Orange brown clay.	No archaeology	Mottled purple and brown sandy clay. Lots of modern debris.
049	50	2	0.46	Dark orangish brown sandy clay. Depth 0.46m.	Orange brown sandy clay, gravel inclusions.	No archaeology	-
050	50	2	0.46	Orange brown. Depth 0.46m	Orange brown sandy clay, gravel inclusions.	1 possible linear feature	-
051	50	2	0.34	Mid brown silty clay. Depth 0.34m.	Orange brown silty clay. Gravel and sub rounded stone inclusions.	No archaeology	-
052	50	2	0.24	Mid brown silty clay. Depth 0.24m.	Orange brown clay. Gravel and subround stone inclusions.	No archaeology	-
053	50	2	0.27	Mid brown silty clay. Depth 0.27m.	Orange brown silty clay, sub rounded stones and gravel inclusions.	No archaeology	-
054	50	2	0.32	Mid brown silty clay. Depth 0.32m.	Orange brown sandy clay. Sub rounded stone and gravel inclusions	No archaeology	-
055	50	2	0.24	Greyish brown silty clay. Depth 0.24m	Orange brown silty clay. Occ. Gravel, sub rounded stone and bedrock inclusions.	2 cultivation furrows	-
056	50	2	0.25	Mid brown silty clay. Depth 0.25m.	Purplish brown silty clay. Bedrock and frequent gravel inclusions.	No archaeology	-
057	50	2	0.32	Dark brown silty clay. Depth 0.32m.	Dark orange brown silty clay. Sub round stone and gravel inclusions.	No archaeology	-
058	50	2	0.34	Mid brown silty clay. Depth 0.34m.	Dark orange brown silty clay. Stone and gravel inclusions.	No archaeology	-
059	50	2	0.32	Dark brown silty clay. Depth 0.32m.	Orange brown with yellow silty clay. Bedrock and subround stone inclusions.	1 wall	-
060	50	2	0.34	Greyish brown silty clay. Depth 0.34m	Orange brown silty sand.	No archaeology	-

Tr No	Length (m)	Width (m)	Depth (m)	Topsoil/Overburden	Subsoil	Details	Intermediate Deposit
061	50	2	0.4-0.3	Dark brown silty clay. Roots, pebble inclusions. Depth 0.3m.	Orange brown sandy clay. Boulder inclusions.	No archaeology	-
062	50	2	0.5	Dark brown silty clay with pebbles. Depth 0.3-0.4m.	Orange brown silty sand.	No archaeology	-
063	50	2	0.3	Dark brown silty clay with pebbles. Depth 0.2-0.3m.	Orange brown silty sand.	No archaeology	-
064	50	2	0.25	Dark brown silty clay with pebbles. Depth 0.2m.	Orange brown silty sand.	2 cultivation furrows	-
065	50	2	0.3	Dark brown silty clay with pebbles. Depth 0.2-0.25m.	Orange brown silty sand.	No archaeology	-
066	50	2	0.35	Dark brown silty clay with pebbles. Depth 0.2-0.25m.	Orange brown silty sand.	No archaeology	-
067	50	2	0.3	Dark brown silty clay with pebbles. Depth 0.2m.	Orange brown silty sand.	No archaeology	-
068	50	2	0.3-0.7	Dark brown silty clay with pebbles. Depth 0.3m.	Orange brown silty sand.	No archaeology	-
069	50	2	0.3	Dark brown silty clay with pebbles. Depth 0.2m.	Orange brown silty sand.	1 cultivation furrow	-
070	50	2	0.4	Dark brown silty clay with pebbles. Depth 0.3m.	Orange brown silty sand.	1 cultivation furrow	-
071	50	2	0.25	Dark brown silty clay with pebbles. Depth 0.15-0.2m	Orange brown silty sand.	1 cultivation furrow	-
072	50	2	0.3	Dark brown silty clay with pebbles. Depth 0.25m.	Orange brown silty sand.	No archaeology	-
073	50	2	0.3	Dark brown silty clay with pebbles. Depth 0.25m.	Orange brown silty sand.	2 cultivation furrows	-
074	50	2	0.3	Dark brown silty clay with pebbles. Depth 0.3m.	Orange brown silty sand.	No archaeology	-
075	50	2	0.4	Dark brown silty clay with pebbles. Depth 0.4m.	Orange brown silty sand.	No archaeology	-
076	50	2	0.4	Dark brown silty clay with pebbles. Depth 0.4m.	Orange brown silty sand.	No archaeology	-
077	50	2	0.4	Dark brown silty clay with pebbles. Depth 0.4m.	Orange brown silty sand.	No archaeology	-
078	50	2	0.3	Dark brown silty clay with pebbles. Depth 0.3m.	Orange brown silty sand.	No archaeology	-
079	50	2	0.4	Dark brown silty clay with pebbles. Depth 0.4m.	Orange brown silty sand.	2 walls	-
080	50	2	0.5	Dark brown silty clay with pebbles. Depth 0.45m.	Orange brown silty sand.	No archaeology	-

Tr No	Length (m)	Width (m)	Depth (m)	Topsoil/Overburden	Subsoil	Details	Intermediate Deposit
081	50	2	0.4	Dark brown silty clay with pebbles. Depth 0.4m.	Orange brown silty sand.	No archaeology	-
082	50	2	0.45	Dark brown silty clay with pebbles. Depth 0.45m.	Orange brown silty sand.	No archaeology	-
083	50	2	?	Dark brown silty clay with pebbles.	Orange brown silty sand.	No archaeology	-
084	50	2	?	Dark brown silty clay with pebbles.	Orange brown silty sand.	No archaeology	-
085	50	2	?	Dark brown silty clay with pebbles.	Orange brown silty sand.	No archaeology	-
086	50	2	?	Dark brown silty clay with pebbles.	Orange brown silty sand.	No archaeology	-
087	50	2	?	Dark brown silty clay with pebbles.	Orange brown silty sand.	No archaeology	-
088	50	2	0.3	Soft to firm, dark greyish brown clayey silt. Occ. Gravel inclusions, no finds.	Stiff compaction, mid greyish orange, gravel w/ occ. Cobble inclusions. Occ. Bedrock outcrops. No finds.	No archaeology	-
089	50	2	0.3	Soft to firm, dark greyish brown clayey silt. Occ. Gravel inclusions, no finds.	Stiff compaction, mid greyish orange, gravel w/ occ. Cobble inclusions. No finds.	No archaeology	-
090	50	2	0.25	Soft to firm, dark greyish brown clayey silt. Occ. Gravel inclusions, no finds.	Stiff compaction, mid greyish orange, gravel w/ occ. Cobble inclusions. Occ. Sandstone bedrock outcrops and coal seams. No finds.	1 wall	-
091	50	2	0.35	Soft to firm, dark greyish brown clayey silt. Occ. Gravel inclusions, no finds. Approx 0.5m depth towards south end	Stiff compaction, mid greyish orange, gravel w/ occ. Cobble inclusions. No finds. Greyer to south at interface with 001, poss affected by coal waste?	No archaeology	-
092	50	2	0.45	Soft to firm compaction, dark greyish brown clayey silt w/ occ. Gravel inclusions. No finds.	Stiff compaction, mid greyish orange silty clay w/ gravel inclusions. No finds.	-	92003. Depth 0.25m Firm compaction, dark greyish black silty clay, gravel and coal dross inclusions. No finds. Interface from mining activity? "dirty" appearance.
093	50	2	0.3	Soft to firm, dark greyish brown clayey silt. Occ. Gravel inclusions, no finds.	Stiff compaction, mid greyish orange, gravel w/ occ. Cobble inclusions. No finds. Poss. Mine workings/ waste visible across surface of 002, particularly to N end.	1 possible mine shaft	-

Tr No	Length (m)	Width (m)	Depth (m)	Topsoil/Overburden	Subsoil	Details	Intermediate Deposit
094	50	2	0.3	Soft to firm dark greyish brown clayey silt. Occ. Gravel inclusions. No finds.	Stiff compaction mid greyish orange silty clay. Gravel and occ. Cobble inclusions. No finds.	1 possible mine shaft	-
095	50	2	0.3	001. Depth 0.3m soft to firm dark greyish brown clayey silt. Occ. Gravel inclusions. No finds.	002. Stiff compaction mid greyish orange silty clay. Gravel and occ. Cobble inclusions. No finds.	1 possible mine shaft	-
096	50	2	0.3	001. Depth 0.3m soft to firm dark greyish brown clayey silt. Occ. Gravel inclusions. No finds.	002. Stiff compaction mid greyish orange silty clay. Gravel and occ. Cobble inclusions. No finds.	No archaeology.	-
097	50	2	0.3	001. Depth 0.3m. Soft to firm dark greyish brown clayey silt. Occ. Gravel inclusions. No finds. Topsoil, "stubble field".	002. Stiff compaction mid greyish orange silty clay. Gravel and occ. Cobble inclusions. No finds.	No archaeology.	-
098	50	2	0.35	Depth 0.35m. Soft to firm dark greyish brown clayey silt. Occ. Gravel inclusions. No finds.	Stiff compaction mid greyish orange silty clay. Gravel and occ. Cobble inclusions and occ. Bands of yellowish bedrock. No finds.	1 possible mine shaft	-
099	50	2	0.3	Depth 0.35m. Soft to firm dark greyish brown clayey silt. Occ. Gravel inclusions. No finds.	Stiff compaction mid greyish orange silty clay. Gravel and occ. Cobble inclusions. No finds.	No archaeology.	-
100	50	2	0.3	Depth 0.3m. Soft to firm dark greyish brown clayey silt. Occ. Gravel inclusions. No finds.	Stiff compaction mid greyish orange silty clay. Gravel and occ. Cobble inclusions. No finds.	No archaeology.	-
101	50	2	0.3	Depth 0.3m. Soft to firm dark greyish brown clayey silt. Occ. Gravel inclusions. No finds.	Stiff compaction mid greyish orange silty clay. Gravel and occ. Cobble inclusions. No finds.	No archaeology.	-
102	50	2	0.3	Depth 0.3m. Soft to firm dark greyish brown clayey silt. Occ. Gravel inclusions. No finds.	Stiff compaction mid greyish orange silty clay. Gravel and occ. Cobble inclusions. No finds.	3 possible mine shafts	-
103	50	2	0.3	Depth 0.3m. Soft to firm dark greyish brown clayey silt. Occ. Gravel inclusions. No finds.	Stiff compaction mid greyish orange silty clay. Gravel and occ. Cobble inclusions. No finds.	No archaeology.	-
104	50	2	0.3	Depth 0.3m. Soft to firm dark greyish brown clayey silt. Occ. Gravel inclusions. No finds.	Stiff compaction mid greyish orange silty clay. Gravel and occ. Cobble inclusions. No finds. Some natural banding of clay.	1 possible mine shaft	-

Tr No	Length (m)	Width (m)	Depth (m)	Topsoil/Overburden	Subsoil	Details	Intermediate Deposit
105	50	2	0.25	Depth 0.25m. Soft to firm dark greyish brown clayey silt. Occ. Gravel inclusions. No finds.	Stiff compaction mid greyish orange silty clay. Gravel and occ. Cobble inclusions. No finds. Some natural banding of clay.	No archaeology	-
106	50	2	0.33	Depth 0.33m Moderately compacted dark brown silty clay. No finds.	Moderate-well compacted orange brown silty clay w/ dark bands. Frequent gravel inclusions. No finds.	No archaeology	-
107	50	2	0.36	Depth 0.36m Moderately compacted dark brown silty clay. No finds.	Moderate-well compacted orange brown silty clay w/ dark bands. Frequent gravel inclusions. No finds.	No archaeology	-
108	50	2	0.36	Depth 0.36m Moderately compacted dark brown silty clay. No finds.	Moderate-well compacted orange brown silty clay. Gravel inclusions. No finds.	No archaeology	-
109	50	2	0.37	Depth 0.37m Moderately compacted dark brown silty clay. No finds.	Moderate-well compacted orange brown silty clay. Gravel inclusions. No finds.	No archaeology	-
110	50	2	0.37	Depth 0.37m Moderately compacted dark brown silty clay. No finds.	Moderate-well compacted orange brown silty clay. Gravel inclusions. No finds.	No archaeology	-
111	50	2	0.36	Depth 0.36m Moderately compacted dark brown silty clay. No finds.	Well compacted orange brown silty clay. Gravel inclusions. No finds.	No archaeology	-
112	50	2	0.33	Depth 0.33m Moderately compacted dark brown silty clay. No finds.	Well compacted orange brown silty clay. Gravel inclusions. No finds.	No archaeology	-
113	50	2	0.36	Depth 0.36m Moderately compacted dark brown silty clay. No finds.	Well compacted orange brown silty clay. Gravel and bedrock inclusions. No finds.	No archaeology	-
114	50	2	0.36	Depth 0.36m Moderately compacted dark brown silty clay. No finds.	Moderately compacted orange brown silty clay. Occ. Gravel inclusions. No finds.	No archaeology	-
115	50	2	0.37	Depth 0.37m Moderately compacted dark brown silty clay. No finds.	Well compacted orange brown silty clay. Gravel inclusions. No finds.	No archaeology	-
116	50	2	0.42	Depth 0.42m Moderately compacted dark brown silty clay. No finds.	Well compacted orange brown silty clay. Gravel and bedrock inclusions. No finds.	1 possible mine shaft	-



Tr No	Length (m)	Width (m)	Depth (m)	Topsoil/Overburden	Subsoil	Details	Intermediate Deposit
117	50	2	0.34	Depth 0.34m Moderately compacted dark brown silty clay. No finds.	Well compacted orange brown silty clay. Frequent gravel inclusions. No finds.	No archaeology	-
118	50	2	0.34	Depth 0.34m Moderately compacted dark brown silty clay. No finds.	Moderately compacted orange brown silty clay. Gravel inclusions. No finds.	No archaeology	-
119	50	2	0.37	Depth 0.37m Moderately compacted dark brown silty clay. No finds.	Moderately compacted orange brown silty clay. Bedrock inclusions. No finds.	No archaeology	-
120	50	2	0.41	Depth 0.41m Moderately compacted dark brown silty clay. No finds.	Moderately compacted orange brown sandy clay. Gravel inclusions. No finds.	No archaeology	-
121	50	2	0.42	Depth 0.42m Moderately compacted dark brown silty clay. No finds.	Moderately compacted orange brown clayey sand. Gravel and sub angular stone inclusions. No finds.	1 possible mine shaft	-
122	50	2	?	Moderately compacted dark brown silty clay. No finds.	Moderately compacted orange brown silty clay. Gravel and sub round stone inclusions. No finds.	2 possible mine shafts	-

## Appendix F: List of photographs

File No.	001		
Frame	Area	Context No.	Subject
1			File ID Shot
2			General pre-excavation shot
3			General pre-excavation shot
4			General pre-excavation shot
5			General pre-excavation shot
6			General pre-excavation shot
7			General pre-excavation shot
8			General pre-excavation shot
9			General pre-excavation shot
10			General pre-excavation shot
11			General pre-excavation shot
12			General pre-excavation shot
13			General pre-excavation shot
14			General pre-excavation shot
15			General pre-excavation shot
16			General pre-excavation shot
17			General pre-excavation shot
18			General pre-excavation shot
19			General pre-excavation shot
20			General pre-excavation shot
21			General pre-excavation shot
22			General pre-excavation shot

Frame	Area	Context No.	Subject	Taken from
23			General pre-excavation shot	
24			General pre-excavation shot	
25			General pre-excavation shot	
26			General pre-excavation shot	
27			General pre-excavation shot	
28			General pre-excavation shot	
29			General pre-excavation shot	
30			General pre-excavation shot	
<b>File No.</b>	<b>002</b>			
1			File ID shot	
2			Tr 1 ID shot	
3			Tr 1 in location context	NW
4			North-east facing section of Tr 1	NE
5			Section through rig and furrow in Tr 1	W
6			Redeposited natural in Tr 1	SW
7			Redeposited natural in Tr 1	SW
8			Redeposited natural in Tr 1	SW
9			Linear features in Tr 1	SE
10			Redeposited natural in Tr 1	SW
11			Post-excavation view of Tr 1	SE
12			Tr 2 ID shot	
13			Tr 2 in location context	NW
14			NE facing section of Tr 2	NE
15			Post-excavation view of Tr 2	SE
16			Tr 3 ID shot	
17			Tr 3 in location context	NW
18			NE facing section of Tr 3	NE
19			Post-excavation view of Tr 3	SE
20			Tr 4 ID shot	
21			Tr 4 in location context	S
22			East facing section of rig and furrow in Tr 4	E
23			East facing section of Tr 4	E
24			Post-excavation view of Tr 4	N
25			Tr 5 ID shot	
26			Tr 5 in location context	S
27			Possible wall in Tr 5	SE
28			Linear features in Tr 5	E
29			East facing section of Tr 5	E
30			Post-excavation view of Tr 5	N
31			Tr 6 ID shot	
32			Tr 6 in location context	S
33			West facing section of Tr 6	W
34			Post-excavation view of Tr 6	N
35			Tr 7 ID shot	
36			Tr 7 in location context	NW
37			South-west facing section of Tr 7	SW
38			Post-excavation view of Tr 7	SE
39			Post-excavation view of Tr 7	SE
40			Tr 8 ID shot	
41			Tr 8 in location context	S
42			South-east facing section of Tr 8	SE
43			South-east facing section of rig and furrow in Tr 8	SE
44			Post-excavation view of Tr 8	NE
45			Tr 9 ID shot	
46			Tr 9 in location context	SW

Frame	Area	Context No.	Subject	Taken from
47			South-east facing section of Tr 9	SE
48			Post-excavation view of Tr 9	NE
49			Tr 10 ID shot	
50			Tr 10 in location context	NW
51	-	-	South-west facing section of Tr 10	SW
52	-	-	Post-excavation view of Tr 10	SE
53	-	-	Tr 11 ID shot	-
54	-	-	Tr 11 in location context	NW
55	-	-	North-east facing section of Tr 11	NE
56	-	-	Post-excavation view of Tr 11	SE
57	-	-	Tr 12 ID shot	-
58	-	-	Tr 12 in location context	NE
59	-	-	Section through mining-related feature in Tr 12	SE
60	-	-	Post-excavation view of Tr 12	SW
61	-	-	Tr 13 ID shot	-
62	-	-	Tr 13 in location context	NE
63	-	-	North-west facing section of Tr 13	NW
64	-	-	Possible feature in Tr 13	NE
65	-	-	Post-excavation view of Tr 13	SW
66	-	-	North-west facing section of Tr 13	NW
67	-	-	Tr 14 ID shot	-
68	-	-	Tr 14 in location context	NE
69	-	-	south-east facing section of Tr 14	SE
70	-	-	Exposed bedrock in Tr 14	SW
71	-	-	Post-excavation view of Tr 14	SW
72	-	-	Tr 15 ID shot	-
73	-	-	Tr 15 in location context	NE
74	-	-	South-east facing section of Tr 14	SE
75	-	-	Post-excavation view of Tr 14	SW
76	-	-	Tr 16 ID shot	-
77	-	-	Tr 16 in location context	NE
78	-	-	South-east facing section of Tr 16	SE
79	-	-	Post-excavation view of Tr 16	SW
<b>File No.</b>	<b>003</b>			
1			File 3 ID shot	
2			Tr 17 ID shot	
3			Tr 17 in location context	NE
4			South-east facing section of Tr 17	SE
5			Post-excavation view of Tr 17	SW
6			Tr 18 ID shot	
7			Tr 18 in location context	NW
8			Possible wall in Tr 18	NE
9			South-west facing section of Tr 18	SW
10			Post-excavation view of Tr 18	SE
11			Tr 19 ID shot	
12			Tr 19 in location context	NW
13			North-east facing section of Tr 19	NE
14			Post-excavation view of Tr 19	SW
15			Possible rectangular feature in Tr 19	NE
16			Tr 20 ID shot	
17			Tr 20 in location context	NW
18			South-west facing section of Tr 20	SW
19			Post-excavation view of Tr 20	SE
20			Tr 21 ID shot	
21			Tr 21 in location context	NW

Frame	Area	Context No.	Subject	Taken from
22			South-west facing section of Tr 21	Sw
23			Post-excavation view of Tr 21	SE
24			Tr 22 ID shot	
25			Tr 22 in location context	W
26			South-west facing section of Tr 22	SW
27			Post-excavation view of Tr 22	SE
28	T18	003	Pre-excavation view of pit	SW
29	T18		Pre-excavation view of quarry feature	NW
30	T18	003	Post-excavation view of pit	SW
31	T18	007	Pre-excavation view of spread	SW
32	T18	-	Post-excavation view of spread	SW
33	T18	008	Pre-excavation view of pit	S
34	T18	008	Post-excavation view of pit	S
35	T18		South-west facing section of quarry feature	SW
36	T18		Post-excavation view of quarry feature	NW
37			Tr 22a ID shot	
38			Tr 22a in location context	W
39			South-west facing section of Tr 22a	SW
40			Post-excavation view of Tr 22a	SE
41			Tr 23 ID shot	
42			Tr 23 in location context	NW
43			South-west facing section of Tr 23	SW
44			Post-excavation view of Tr 23	SE
45			Tr 24 ID shot	
46			Tr 24 in location context	NW
47			South-west facing section of Tr 24	SW
48			Post-excavation view of Tr 24	SE
49			Tr 25 ID shot	
50			Tr 25 in location context	NW
51			South-west facing section of Tr 25	SW
52			Post-excavation view of Tr 25	SE
53			Tr 26 ID shot	
54			Tr 26 in location context	NW
55			Mid-excavation view of wall	S
56			Mid-excavation view of wall	S
57			South-west facing section of Tr 26	SW
58			Possible linear feature in Tr 26	SW
59			Possible mining remains in Tr 26	SW
60			Post-excavation view of Tr 26	SE
61			Tr 27 ID shot	
62			Tr 27 in location context	NE
63			South-east facing section of Tr 27	SE
64			Possible linear feature in Tr 27	S
65			Post-excavation view of Tr 27	SW
66			Post-excavation view of stone wall	S
67			Post-excavation view of stone wall	S
<b>File No.</b>	<b>004</b>			
1			File ID shot	
2			Tr 28 ID shot	
3			Tr 28 in location context	NW
4			North-east facing section of Tr 28	NE
5			Post-excavation view of Tr 28	SE
6			Tr 29 ID shot	
7			Tr 29 in location context	N
8			East facing section of Tr 29	E

Frame	Area	Context No.	Subject	Taken from
9			Post-excavation view of Tr 29	S
10			Tr 30 ID shot	
11			Tr 30 in location context	NE
12	T13	017	Post-excavation view of feature	SW
13	T13	017	South-west facing section of feature	SW
14			South-east facing section of Tr 30	SE
15			Post-excavation view of Tr 30	SW
16			Tr 31 ID shot	
17			Tr 31 in location context	NE
18			South-east facing section of Tr 31	SE
19			Post-excavation view of Tr 31	SW
20			Tr 32 ID shot	
21			Tr 32 in location context	NE
22			South-east facing section of Tr 32	SE
23			Post-excavation view of Tr 32	
24			Tr 33 ID shot	
25			Tr 33 in location context	NE
26			South-east facing section of Tr 33	SE
27			South facing section	S
28			Post-excavation view of slot through feature	W
29			Post-excavation view of Tr 33	SW
30			Tr 34 ID shot	
31			Tr 34 in location context	NW
32			South-east facing section of Tr 34	SW
33			South-east facing section of Tr 34	SW
34			Post-excavation view of Tr 34	SW
35			Tr 35 ID shot	
36			Tr 35 in location context	NE
37			North-west facing section of Tr 35	NW
38			Sandstone wall	N
39			Sandstone wall	NE
40			Post-excavation view of Tr 35	SW
41			Tr 36 ID shot	
42			Tr 36 in location context	NW
43			South-west facing section of Tr 36	SW
44			Post-excavation view of Tr 36	SE
45			Tr 37 ID shot	
46			Tr 37 in location context	NE
47			South-west facing section of Tr 37	SW
48			Post-excavation view of Tr 37	SE
49			Tr 38 ID shot	
50			Tr 38 in location context	NE
51			North-west facing section of Tr 38	NW
52			Post-excavation view of Tr 38	SW
53			Tr 39 ID shot	
54			Tr 39 in location context	NE
55			North-west facing section of Tr 39	NW
56		020	Post-excavation view of wall	S
57			Post-excavation view of Tr 39	NW
58			Tr 40 ID shot	
59			Tr 40 in location context	NE
60			South-west facing section of Tr 40	SW
61			Post-excavation view of Tr 40	SE
62			Tr 41 ID shot	
63			North-west facing section of Tr 41	NW

Frame	Area	Context No.	Subject	Taken from
64			Post-excavation view of Tr 41	SW
65			Post-excavation view of possible pit	SE
66			Tr 42 ID shot	
67			Tr 42 in location context	NW
68			South-west facing section of Tr 42	SW
69			South-west facing section of coal deposit	SW
70			Post-excavation view of Tr 42	SE
71			Tr 43 ID shot	
72			Tr 43 in location context	NE
73			North-west facing section of Tr 43	NW
74			Post-excavation view of Tr 43	SW
75			Tr 44 ID shot	
76			Tr 44 in location context	NE
77			South-east facing section of Tr 44	SE
78			Post-excavation view of Tr 44	SW
<b>File No.</b>	<b>005</b>			
1			File ID shot	
2			Tr 45 ID shot	
3			Tr 45 in location context	NE
4			North-west facing section of feature	NW
5			North-west facing section of Tr 45	NW
6			Post-excavation view of Tr 45	SW
7			Tr 46 ID shot	
8			Tr 46 in location context	NE
9			South-west facing section of Tr 46	SW
10			Post-excavation view of Tr 46	SE
11			Tr 47 ID shot	
12			Tr 47 in location context	NE
13			South-west facing section of Tr 47	SW
14			South-west facing section of feature	SW
15			Post-excavation view of Tr 46	SE
16			Tr 48 ID shot	
17			Tr 48 in location context	NE
18			South-west facing section of dumped material in Tr 48	SW
19			South-west facing section of Tr 48	SW
20			South-west facing section of Tr 48	SW
21			Post-excavation view of Tr 48	SE
22			Tr 49 ID shot	
23			Tr 49 in location context	NW
24			Rubble in Tr 49	SW
25			South-west facing section of Tr 49	SW
26			Post-excavation view of Tr 49	SE
27			Tr 50 ID shot	
28			Tr 50 in location context	NW
29			South-west facing section of Tr 50	SW
30			Possible feature in Tr 50	E
31			Post-excavation view of Tr 50	SE
32			Tr 51 ID shot	
33			Tr 51 in location context	NW
34			South-west facing section of Tr 51	SW
35			Post-excavation view of Tr 51	SE
36			Tr 52 ID shot	
37			Tr 52 in location context	NW
38			South-west facing section of Tr 52	SW
39			Post-excavation view of Tr 52	SE

Frame	Area	Context No.	Subject	Taken from
40			Tr 53 ID shot	
41			Tr 53 in location context	N
42			East facing section of Tr 53	E
43			Post-excavation view of Tr 53	S
44			Tr 54 ID shot	
45			Tr 54 in location context	NE
46			North-west facing section of Tr 54	NW
47			Post-excavation view of Tr 54	SW
48			Tr 55 ID shot	
49			Tr 55 in location context	NW
50			South-west facing section of Tr 55	SW
51			Post-excavation view of Tr 55	SE
52			Tr 56 ID shot	
53			South-east facing section of Tr 56	SE
54			Post-excavation view of Tr 56	SW
55			Tr 57 ID shot	
56			Tr 57 in location context	NE
57			North-west facing section of Tr 57	NW
58			Post-excavation view of Tr 57	SW
59			Tr 58 ID shot	
60			Tr 58 in location context	NE
61			North-west facing section of Tr 58	NW
62			Post-excavation view of Tr 58	SW
63			Tr 59 ID shot	
64			Tr 59 in location context	NE
65			North-west facing section of Tr 59	NW
66			Post-excavation view of Tr 59	SW
67			Post-excavation view of Tr 59	SW
68			Tr 60 ID shot	
69			Tr 60 in location context	
70			North-west facing section of Tr 60	
71			Post-excavation view of Tr 60	
<b>File No.</b>	<b>006</b>			
1			File ID shot	
2	Tr 61		Tr 61 ID shot	
3	Tr 61	001/002	North facing section of Tr 61	N
4	Tr 61	002	Post-excavation view of Tr 61	W
5	Tr 62	-	Tr 62 ID shot	
6	Tr 62	001/002	North facing section of Tr 62	N
7	Tr 62	002	Post-excavation view of Tr 62	W
8	Tr 63		Tr 63 ID shot	
9	Tr 63	001/002	North facing section of Tr 63	N
10	Tr 63	002	Post-excavation view of Tr 63	W
11	Tr 64		Tr 64 ID shot	
12	Tr 64	001/002	North-east facing section of Tr 64	NE
13	Tr 64	002	Post-excavation view of Tr 64	NW
14	Tr 65		Tr 65 ID shot	
15	Tr 65	001/002	North-west facing section of Tr 65	NW
16	Tr 65	002	Post-excavation view of Tr 65	NE
17	Tr 66		Tr 66 ID shot	
18	Tr 66	001/002	North-east facing section of Tr 66	NE
19	Tr 66	002	Post-excavation view of Tr 66	NW
20	Tr 67		Tr 67 ID shot	
21	Tr 67	001/002	South-east facing section of Tr 67	SE
22	Tr 67	002	Post-excavation view of Tr 67	NE

Frame	Area	Context No.	Subject	Taken from
23	Tr 68		Tr 68 ID shot	
24	Tr 68	001/002	North-west facing section of Tr 68	NW
25	Tr 68	002	Post-excavation view of Tr 68	NE
26	Tr 69		Tr 69 ID shot	
27	Tr 69	001/002	South-west facing section of Tr 69	SW
28	Tr 69	002	Post-excavation view of Tr 69	NW
29	Tr 71		Tr. 71 ID shot	
30	Tr 71	001/002	East facing section of Tr 71	E
31	Tr 71	002	Post-excavation view of Tr 71	N
32	Tr 70		Tr. 70 ID shot	
33	Tr 70	001/002	East facing section of Tr 70	E
34	Tr 70	002	Post-excavation view of Tr 70	N
35	Tr 72		Tr. 72 ID shot	
36	Tr 72	001/002	East facing section of Tr 72	E
37	Tr 72	002	Post-excavation view of Tr 72	N
38	Tr 73		Tr. 73 ID shot	
39	Tr 73	001/002	East facing section of Tr 73	E
40	Tr 73	002	Post-excavation view of Tr 73	N
<b>File No.</b>	<b>007</b>			
1			File ID shot	
2			Pre-excavation view of possible feature	NW
3			Post-excavation view of slot through possible feature	NW
4			Post-excavation view of slot through possible feature	NW
5			Post-excavation view of slot through possible feature	NW
6			Pre-excavation view of possible feature	NE
7			Pre-excavation view of possible feature	NE
<b>File No.</b>	<b>008</b>			
1	-		File ID shot (misidentified as file 10)	
2			Post-excavation view of Tr 74	NE
3			Post-excavation view of Tr 74	SW
4			Post-excavation view of Tr 75	SE
5			Post-excavation view of Tr 75	NW
6			South facing section of Tr 75	S
7			North-west facing section of Tr 74	NW
8			Post-excavation view of Tr 76	SE
9			Post-excavation view of Tr 76	NW
10			East facing section of Tr 76	E
11			Post-excavation view of Tr 77	NE
12			Post-excavation view of Tr 77	SW
13			North-west facing section of Tr 77	NW
14			Post-excavation view of Tr 78	SW
15			Post-excavation view of Tr 78	NE
16			South-east facing section of Tr 78	SE
17			Post-excavation view of Tr 79	NW
18			Post-excavation view of Tr 79	SE
19			West facing section of Tr 79	W
20			Post-excavation view of Tr 80	SE
21			Post-excavation view of Tr 80	NW
22			East facing section of Tr 80	E
23			Post-excavation view of Tr 81	NE
24			Post-excavation view of Tr 81	SW
25			South-east facing section of Tr 81	SE
26			Post-excavation view of Tr 82	NW
27			Post-excavation view of Tr 82	SE
28			South-west facing section of Tr 82	SW



Frame	Area	Context No.	Subject	Taken from
29			Post-excavation view of Tr 83	NE
30			Post-excavation view of Tr 83	SW
31			South-east facing section of Tr 83	SE
32			Post-excavation view of Tr 84	NW
33			Post-excavation view of Tr 84	SE
34			South-west facing section of Tr 84	SW
35			Location of possible quarrying on trench plan	
36			Pre-excavation view of possible quarrying	SW
37			Location shots of trench with possible quarry	W
38			Location shots of trench with possible quarry	S
39			Location shots of trench with possible quarry	SW
40			Location shots of trench with possible quarry	E
41			Possible quarry (investigation showed it as a recent SI trench)	SE
42			Pre-excavation view of possible wall in Tr 79	NE
43			Pre-excavation view of possible wall in Tr 79	SE
44			South-east facing section of possible wall in Tr 79	SE
45			Post-excavation view of possible wall slot 032 in Tr 79	NW
46			Post-excavation view of possible wall slot 032 in Tr 79	NE
47			Pre-excavation view of possible mine shaft	S
48			Tr 88 ID shot	
49			Tr 88 in location context	NE
50			North-west facing section of Tr 88	NW
51			Possible pit in Tr 88	SW
52			Post-excavation view of Tr 88	S
53			Tr 89 ID shot	
54			Tr 89 in location context	N
55			East facing section of Tr 89	E
56			Post-excavation view of Tr 89	S
57			Tr 90 ID shot	
58			Tr 90 in location context	N
59			Possible feature in Tr 90	N
60			North facing section of Tr 90	E
61			Possible stone feature in Tr 90	S
62			Post-excavation view of Tr 90	S
63			Tr 91 in location context	N
64			West facing section of Tr 91	W
65			Post-excavation view of Tr 91	S
66			Tr 92 ID shot	
67			Tr 92 in location context	N
68			East facing section of Tr 92	E
69			Post-excavation view of Tr 92	S
70			Tr 93 ID shot	
71			Tr 93 in location context	N
72			East facing section of Tr 93	E
73			Possible mine entry in Tr 93	N
74			Post-excavation view of Tr 93	S
75			Tr 94 ID shot	
76			Tr 94 in location context	N
77			East facing section of Tr 94	E
78			Possible mine entry in Tr 94	N
79			Possible mine entry in Tr 94	N
80			Post-excavation view of Tr 94	S
81			Tr 96 ID shot	
82			Tr 96 in location context	W
83			North facing section of Tr 96	N

Frame	Area	Context No.	Subject	Taken from
84			Post-excavation view of Tr 96	E
85			Tr 95 ID shot	
86			Tr 95 in location context	W
87			East facing section of Tr 95	E
88			Possible mine workings in Tr 95	N
89			Post-excavation view of Tr 95	E
90			Tr 97 ID shot	
91			Tr 97 in location context	W
92			South facing section of Tr 97	S
93			Post-excavation view of Tr 97	E
94			Tr 98 ID shot	
95			Tr 98 in location context	W
96			South facing section of Tr 98	S
97			Possible mine workings in Tr 98	W
98			Post-excavation view of Tr 98	E
99			Tr 99 ID shot	
100			Tr 99 in location context	W
101			North facing section of Tr 99	N
102			Shale deposit in Tr 99	W
103			Post-excavation view of Tr 99	E
104			Tr 100 ID shot	
105			Tr 100 in location context	N
106			East facing section of Tr 100	E
107			Post-excavation view of Tr 100	S
108			Tr 101 ID shot	
109			Tr 101 in location context	N
110			East facing section of Tr 101	E
111			Coal seam in Tr 101	N
112			Post-excavation view of Tr 101	S
113			Tr 102 ID shot	
114			Tr 102 in location context	N
115			East facing section of Tr 102	E
116			Possible mine workings in Tr 102	N
117			Possible mine workings in Tr 102	N
118			Possible mine workings in Tr 102	N
119			Post-excavation view of Tr 102	S
120			Tr 103 ID shot	
121			Tr 103 in location context	N
122			East facing section of Tr 103	E
123			Post-excavation view of Tr 103	S
124			Tr 104 ID shot	
125			Tr 104 in location context	N
126			East facing section of Tr 104	E
127			Possible mine workings in Tr 104	N
128			Post-excavation view of Tr 104	S
129			Tr 105 ID shot	
130			Tr 105 in location context	N
131			East facing section of Tr 105	E
132			Post-excavation view of Tr 105	S
133			Tr 106 ID shot	
134			Tr 106 in location context	NW
135			North-east facing section of Tr 106	NE
136			Post-excavation view of Tr 106	SE
137			Tr 107 ID shot	
138			Tr 107 in location context	NW

Frame	Area	Context No.	Subject	Taken from
139			North-east facing section of Tr 107	NE
140			Post-excavation view of Tr 107	SE
141			Tr 108 ID shot	
142			Tr 108 in location context	NW
143			North-east facing section of Tr 108	NE
144			Possible mine workings in Tr 108	NE
145			Possible quarry works in Tr 108	SE
146			Possible quarry works in Tr 108	SE
147			Post-excavation view of Tr 108	SE
148			Tr 109 ID shot	
149			Tr 109 in location context	NW
150			North-east facing section of Tr 109	NE
151			Post-excavation view of Tr 109	SE
152			Tr 110 ID shot	
153			Tr 110 in location context	NW
154			North-east facing section of Tr 110	NE
155			Post-excavation view of Tr 110	SE
156			Possible mine workings in Tr 110	SE
157			Tr 111 ID shot	
158			Tr 111 in location context	NW
159			North-east facing section of Tr 111	NE
160			Post-excavation view of Tr 111	SE
161			Tr 112 ID shot	
162			Tr 112 in location context	NW
163			North-east facing section of Tr 112	NE
164			South-west facing section of Tr 112	SW
165			Post-excavation view of Tr 113	SE
166			Tr 113 ID shot	
167			Tr 113 in location context	NW
168			North-east facing section of Tr 113	NE
169			Post-excavation view of Tr 113	SE
170			Tr 114 ID shot	
171			Tr 114 in location context	NW
172			North-east facing section of Tr 114	NE
173			Post-excavation view of Tr 114	SE
174			Tr 115 ID shot	
175			Tr 115 in location context	NE
176			North-east facing section of Tr 115	NE
177			Post-excavation view of Tr 115	SE
178			Tr 116 ID shot	
179			Tr 116 in location context	NE
180			South-east facing section of Tr 116	SE
181			Possible feature in Tr 116	SW
182			Possible feature in Tr 116	SW
183			Post-excavation view of Tr 116	SW
184			Tr 117 ID shot	
185			Tr 117 in location context	NE
186			South-east facing section of Tr 117	SE
187			South-east facing section of Tr 117	SE
188			Post-excavation view of Tr 117	SW
189			Tr 118 ID shot	
190			Tr 118 in location context	NE
191			South-east facing section of Tr 118	SE
192			Post-excavation view of Tr 118	SW
193			Tr 119 ID shot	

Frame	Area	Context No.	Subject	Taken from
194			Tr 119 in location context	NW
195			South-west facing section of Tr 119	SW
196			Plow scores in Tr 119	SE
197			Post-excavation view of Tr 119	SE
198			Tr 120 ID shot	
199			Tr 120 in location context	NE
200			South-east facing section of Tr 120	SE
201			Post-excavation view of Tr 120	SW
202			Tr 121 ID shot	
203			Tr 121 in location context	NE
204			South-east facing section of Tr 121	SE
205			Possible mine shaft in Tr 121	SW
206			Post-excavation view of Tr 121	SW
207			Tr 122 ID shot	
208			Tr 122 in location context	SW
209			Possible mining feature in Tr 122	NE
210			Possible mine shaft in Tr 122	NE
211			Possible mining feature in Tr 122	NE
212			North-east facing section of Tr 122	NE
213			Possible mine shaft in Tr 122	NE
214			Post-excavation view of Tr 122	NE

## Appendix G: Discovery and Excavation Scotland Entry

LOCAL AUTHORITY:	City of Edinburgh
PROJECT TITLE/SITE NAME:	West Edge Farm, Lang Loan
PROJECT CODE:	4995
PARISH:	Edinburgh
NAME OF CONTRIBUTOR(S):	Jamie Henderson
NAME OF ORGANISATION:	GUARD Archaeology Limited
TYPE(S) OF PROJECT:	Archaeological evaluation and metal detecting survey
NMRS NO(S):	NT26NE 57
SITE/MONUMENT TYPE(S):	Early modern settlement, agriculture and mining features
SIGNIFICANT FINDS:	Early modern coins, lead seals, lead musket balls
BNG (2 letters, 6 figures)	NT 289 677
START DATE (this season)	18 <sup>th</sup> September 2018
END DATE (this season)	26 <sup>th</sup> October 2018
PREVIOUS WORK (incl. DES ref.)	None
MAIN (NARRATIVE) DESCRIPTION: (May include information from other fields)	Due to the potential for the survival of sub-surface remains and artefacts relating to post-medieval and early modern settlement and mining, GUARD Archaeology Limited carried out a metal detecting survey and archaeological evaluation of a housing development area at West Edge Farm, Lang Loan. The artefacts recovered during the metal detecting survey included 14 coins, 10 buttons, three musket balls and three lead seals. The trial trench evaluation of 7% of the development area encountered a series of walls probably relating to the Carthall Hamlet, as well as rig and furrows and 12 possible coal pit mineshafts.
PROPOSED FUTURE WORK:	--
SPONSOR OR FUNDING BODY:	Bellway Homes and Miller Homes
CAPTION(S) FOR ILLUSTRS:	None
ADDRESS OF MAIN CONTRIBUTOR:	GUARD Archaeology Ltd, 52 Elderpark Workspace, Glasgow, G51 3TR
EMAIL ADDRESS:	bob.will@guard-archaeology.co.uk
ARCHIVE LOCATION	NRHE (intended)

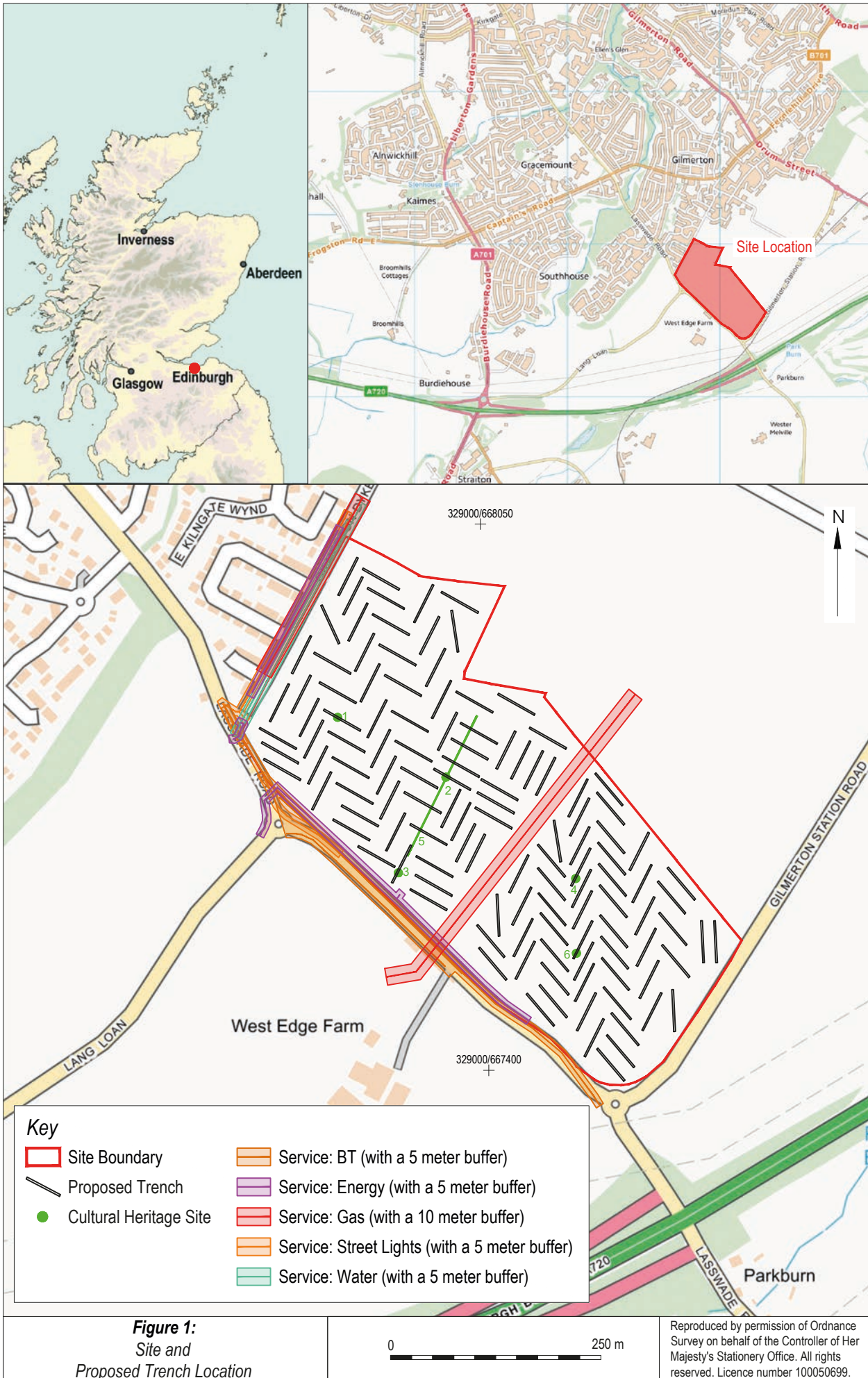
**Appendix H: Written Scheme of Investigation**

# WEST EDGE, LANG LOAN, EDINBURGH

ARCHAEOLOGICAL WRITTEN SCHEME OF INVESTIGATION

PROJECT 4995





**Figure 1:**  
Site and  
Proposed Trench Location

0 250 m

Reproduced by permission of Ordnance Survey on behalf of the Controller of Her Majesty's Stationery Office. All rights reserved. Licence number 100050699.

## Executive Summary

- 1.1 This Written Scheme of Investigation forms the archaeological method statement for the metal detecting survey and evaluation of West Edge, Lang Loan, Edinburgh and will require to be agreed by City of Edinburgh Council Archaeology Service (CECAS hereafter), on behalf of the Planning Authority, prior to the commencement of archaeological fieldwork.

## Introduction

- 2.1 This Written Scheme of Investigation (WSI) sets out the methodology for the archaeological mitigation works required for the West Edge, Lang Loan, Edinburgh Development Area in accordance with condition 5 of the planning consent (Ref: 16/03895/PPP). In accordance with the recommendation from CECAS (Planning reference: 16/03895/PPP), an initial metal detecting survey will be undertaken to establish if any archaeological artefacts relating to the earlier use of the development area are buried within the topsoil. An archaeological evaluation of the development area will then be undertaken to establish the presence, extent and nature of any significant archaeological remains. Should significant remains be identified and it is not possible to preserve them *in situ* a further requirement for archaeological works to ensure their preservation through record is likely to be required.
- 2.2 This WSI outlines the programme of archaeological works that may be needed to mitigate the effects of the proposed development. It details the methodology to be employed in implementing the Stage 1 archaeological works. The mitigation methodology to be employed during Stage 2 excavation and Stage 3 post excavation analysis and publication, if required, will be specified in *addenda* to this document. These *addenda*, if required, will be submitted for the approval of the City of Edinburgh Council Archaeology Service (CECAS), prior to the commencement of any archaeological work. All phases of work will be funded by the developer as required by the Planning Authority.

## Site Location

- 3.1 The development area is located to the south of Gilmerton, Edinburgh (centred at NGR: NT 2898 6771). The total development area is 18.6 ha, forming part of one large field (Figure 1); the available area for metal detecting and evaluation, taking account of service buffers, is 17.439 ha. The development area is bounded to the west by Lasswade Road, and to the south by Gilmerton Station Road. To the north is housing and agricultural fields lie to the east.

## Archaeological and Historical Background

- 4.1 A desk-based assessment (DBA) of the development area was carried out by GUARD Archaeology Limited in 2016 and included a walkover survey of the site. The following paragraphs outline the historical development of the site.

- 4.2 In the mid-eighteenth century, the Site was demonstrably part of Gilmerton estate, which has a long history of land ownership dating back to the twelfth century. Good writes that:

*The lands of Gilmerton were cultivated or farmed out by David I . . . and they remained in the possession of the Crown until the time of Robert the Bruce. No charters exist of an earlier date than his reign, and those who occupied the lands were called the King's tenants.*

(Good 1893, 105)

- 4.3 The mansion house at Gilmerton, named as Gilmerton Place House, was not occupied by any of the proprietors "for upwards of 220 years" (Good 1893, 108). This house dates from about the mid-sixteenth century, and was presumably built to replace the earlier Gilmerton House which, in 1547, was "traitorously delivered to the English, and by an Act it was ordered to be cast down" (Ibid)
- 4.4 In 1763, the small settlement named as Carthall was at least partly situated within the north part of the Site. By 1893, the hamlet had been "entirely cleared away" (Good 1893, 115). The cropmark of a

rectangular structure (part of Site 1) lies towards the north of the site, and may represent a building within Carthall, or the remains of an un-related and previously unrecorded structure.

- 4.5 The lands of Gilmerton estate, including the development area, were long used for coal mining and for quarrying. Coal mining is known to have taken place on the lands at Gilmerton in 1427 (Good 1893, 110), and the industry was carried out:

*on a considerable scale in 1627, and in 1760 about eighty families were constantly employed, the output being from twenty to twenty-four thousand tons annually*  
(Ibid 163).

- 4.6 Good also reports that:

*In 1830 the Gilmerton coal mines were the deepest that had ever been made upon the edge levels or upon any of the coal fields in Scotland, and the first in which a railway was introduced for carrying the produce of edge-coal. [The engine pit in 1839 was] completed to the depth of 96 fathoms.*

(Ibid 163)

- 4.7 The Gilmerton mines:

*lay dormant for upwards of thirty years, when the Glasgow Coal and Iron Company leased them from Sir David Baird for a period of nineteen years. They are at present (1893) wrought by a company under the name of the Gilmerton Gas Coal Company.*

(Ibid 164)

- 4.8 On the quarrying of freestone, Good writes that the only sizeable freestone quarry in Liberton parish in the late nineteenth century was at Gilmerton, where several seams were worked (Good 1893, 157). The location of this quarry is not known, but a sandstone quarry lay to the east of the Site in 1855 and, since the term freestone can be used to signify sandstone or limestone, it is possible that this is the quarry Good was referring to.

- 4.9 The DBA identified the following six cultural heritage sites within the development area:

- rectangular structure, linear features, pit alignments, rig & furrow (Site 1; NRHE NT26NE 57);
- two old shafts (Sites 2 and 3);
- old coal pit (Site 4);
- linear cropmarks (Site 5), and
- a cropmark or parchmark (Site 6).

- 4.10 From the DBA, there is potential for the survival of sub-surface remains and artefacts and to survive within the development area (Rennie 2016).

## Aims, Objectives and Scope

- 5.1 The aims of the archaeological evaluation are to identify:

- the extent and nature of known archaeological features within the development area;
- as yet unknown archaeological features and deposits within the development area.

- 5.2 The objectives are therefore to:

- Conduct an archaeological metal detecting survey across the development area to establish the presence or absence of metal archaeological artefacts;
- Conduct an archaeological evaluation within the development area to establish the presence or absence of any archaeological remains, and their character, date and extent if surviving;



- Submit a report to data structure level for agreement of the CECAS, on behalf of the Planning Authority, on completion of the archaeological fieldwork, which includes an outline of the scope of any further excavation works should any significant archaeology be encountered.

## Fieldwork Methodology

- 6.1 All work will be conducted in line with the following standards and guidance of the Chartered Institute for Archaeologists (CIfA), of which GUARD Archaeology is a Registered Organisation:
- *Code of conduct* (2014);
  - *Standard and guidance for archaeological field evaluation* (2014), and
  - *Standard and guidance for the creation, compilation, transfer and deposition of archaeological archives* (2014).

### Metal Detecting Survey

- 6.2 An initial metal detecting survey of the development area will be undertaken in order to establish the presence or absence any metal archaeological artefacts that survive within the topsoil. Metal detecting will be undertaken in 10 m transects across the available 17.439 ha development area. The transects will be surveyed in by sub-cm GPS. Finds that are detected during the metal detecting survey will be plotted using a sub-metre GPS and recovered using stratigraphically controlled key-hole excavation for identification and further study if necessary. All finds collected during metal detecting will be assessed for identification by a suitably qualified and experienced battlefield archaeologist.

### Archaeological Evaluation

- 6.3 The metal detecting survey will be followed by an archaeological evaluation of the development area comprising the machine excavation of trenches amounting to 7% (ie 12,200 m<sup>2</sup>) of the 17.439 ha available area out with services and associated buffers. This will evaluate the presence, nature, significance and extent of any archaeological features.
- 6.4 The evaluation trenches across the development area will comprise 122 trenches each measuring 50 m long and 2 m wide, amounting to 12,200 m<sup>2</sup> in total (Figure 1). Evaluation trenches will be located to specifically target known sites as well as the overall development area.
- 6.5 All machine excavation of trenches will be supervised by a GUARD Archaeologist. The machine excavator will be fitted with a c 2 m wide flat-bladed (toothless) ditching bucket.
- 6.6 The topsoil at each trench location will be removed in spits to the first archaeological horizon or, where none was found, to the natural subsoil. Any archaeological features encountered will be cleaned by hand by the on-site Archaeologist to determine their character and extent.
- 6.7 Any significant archaeological features encountered will be dealt with by the on-site Archaeologist. Should negative-cut features be encountered, a representative sample will be 25-50% excavated in order to determine their significance, date and function. A full record of excavated features will be made using a single context recording system using pro forma sheets, drawings and photographs. All archaeological features will be photographed and recorded at an appropriate scale. Sections will be drawn at 1:10 and plans at 1:20. All trenches will be accurately surveyed using a sub-metre GPS and located within the National Grid.
- 6.8 All archaeological finds will be dealt with by the on-site Archaeologist. Finds and animal bone will be collected as bulk samples by context. Significant small finds will be three dimensionally located prior to collection. All finds will be processed to MAP2 type standards and subject to appropriate specialist assessment. If necessary, conservation of finds will be appraised to allow for specialist study.
- 6.9 All excavated feature fills and horizons will be sampled as appropriate, using bulk soil samples, for palaeo-environmental evidence.

- 6.10 A representative section will be recorded denoting depth of topsoil, any stratigraphy present and the nature of the soil. This information will be logged in the day book together with a sketch drawn to scale and a photographic record of deposits.
- 6.11 Should human remains be revealed by the excavation, the local police, the client and CECAS will be informed immediately. Any human remains will be accurately recorded, but left in situ, pending the agreement of the police, the client and CECAS on an appropriate mitigation strategy.
- 6.12 Should significant archaeological remains be encountered, there is a contingency for examining *up to* a further 3% (ie 5,230 m<sup>2</sup>) of the development area. These evaluation trenches will target any significant archaeology encountered with the aim of defining the full extent of archaeological features.
- 6.13 Should significant archaeological remains be encountered by the evaluation, requiring more than the limited evaluation outlined above, the remains will be largely left in situ pending the agreement of the client and the City of Edinburgh Council Archaeology Officer on WSI addenda for an appropriate scope of excavation (Stage 2) and Post-excavation design including scope of finds analysis, conservation & publication (Stage 3).
- 6.14 On completion of the recording of the evaluation trenches, the backfilling of trenches will be undertaken by machine. No specialist backfilling is proposed, nor will the backfilling of trenches be supervised by the on-site archaeologist.
- 6.15 GUARD Archaeology would be prepared to provide a presentation to local interested groups and societies on the findings of the metal detecting survey and evaluation to fulfil the community engagement element of the archaeological condition.

## Report Preparation and Contents

- 7.1 A report detailing the results of the archaeological fieldwork will be submitted to the client within two to four weeks of completion of fieldwork and, subject to client approval, then submitted to CECAS. The report will take the form of a Data Structure Report and will contain an analysis of the results of the metal detecting survey and evaluation. The report will include a full descriptive text that will characterise the date and extent of any archaeological deposits. It will also include plans at an appropriate scale showing the distribution of any artefacts from the metal detecting survey, any areas of ground-breaking works, evaluation trenches, archaeological features and will include archiving lists of all finds, samples, field drawings and photographs.
- 7.2 If appropriate, the report will be accompanied by an addendum to this WSI for further archaeological fieldwork, should significant archaeology have been encountered.
- 7.3 The report will include the following:
  - executive summary;
  - a site location plan to at least 1:10,000 scale with at least an 8 figure central grid reference;
  - OASIS reference number; unique site code;
  - Planning application number;
  - contractor's details including date work carried out;
  - nature and extent of the proposed development, including developer/client details;
  - description of the site history, location and geology;
  - a site plan to a suitable scale and tied into the national grid so that features can be correctly orientated;
  - discussion of the results of field work;
  - context & feature descriptions;

- features, number and class of artefacts, spot dating & scientific dating of significant finds presented in tabular format;
  - plans and section drawings of the features drawn at a suitable scale;
  - initial assessment of relevant finds/samples if appropriate;
  - recommendations regarding the need for, and scope of, any further archaeological work such as excavation (Stage 2) and Post-excavation finds analysis, conservation & publication (Stage 3);
  - bibliography.
- 7.4 A pdf copy of the report will be prepared for the client and a further hard copy and a digital PDF copy will be sent to CECAS.
- 7.5 The report will be presented in an ordered state and contained within a protective cover/sleeve or bound in some fashion. The report will be page numbered and supplemented with section numbering for ease of reference.

## Copyright

- 8.1 Unless otherwise agreed copyright for any report resulting from the archaeological work undertaken as part of the project will be deemed the intellectual property of GUARD Archaeology Ltd.

## Publication

- 9.1 A summary of the project results will be submitted to *Discovery and Excavation in Scotland*. In the event of minor archaeological remains being encountered during the archaeological fieldwork, it is proposed that a comprehensive report submitted to *Discovery and Excavation in Scotland*, will form the final publication of the site. A copy of this will be included in the Data Structure Report.

## Archive

- 10.1 The archive for the project, including a copy of the report, will be submitted to the National Record of the Historic Environment within three months of completion of all relevant work.
- 10.2 The online OASIS form at <http://ads.ahds.ac.uk/project/oasis/> will be completed within 3 months of completion of the work. Once the Data Structure Report has become a public document by submission to or incorporation into the SMR, CECAS will validate the OASIS form thus placing the information into the public domain on the OASIS website.

## Finds Disposal

- 11.1 The arrangement for the final disposal of any finds made in connection with the archaeological work, will be deposited in keeping with Scottish legal requirements as set out in the Treasure Trove Code of Practice published by the Scottish Government in January 2016. The laws relating to Treasure Trove and *Bona Vacantia* in Scotland apply to all finds where the original owner cannot be identified. This includes all material recovered during archaeological fieldwork. Accordingly, all assemblages recovered from archaeological fieldwork are claimed automatically by the Crown and must be reported to the Scottish Archaeological Finds Allocation Panel through its secretariat, the Treasure Trove Unit. In the event of the discovery of small finds, a filled-out copy of the form "Declaration of an Archaeological Assemblage from Fieldwork" and two copies of the pertinent Data Structure Report will be submitted to the Panel at the conclusion of the fieldwork. The Panel will then be responsible for recommending to the Queen's and Lord Treasurer's Remembrancer which museum should be allocated the finds. If the finds are allocated to the City of Edinburgh Museum, all finds will be marked (on the finds bag) with appropriate CEC accession number and boxed, with boxes marked again with appropriate CEC box number. All artefacts will be temporarily stored by GUARD Archaeology until a decision has been made by the panel.

## Personnel and Liaison

- 12.1 The GUARD team will comprise the following qualified and experienced GUARD archaeologists:
- Project Manager: Christine Rennie
  - Project Director (on-site Archaeologist): Alan Hunter Blair
  - Survey Archaeologist: TBC
  - Archaeologists: TBC
  - Finds and Environmental Support and Conservation: Aileen Maule
  - Illustrator: Gillian Sneddon
  - Quality Assurance: Dr John Atkinson
- 12.2 The GUARD Project Manager, Christine Rennie, will be the point of contact for the archaeological works. A full CV for individuals concerned can be made available on request.

## Monitoring

- 13.1 The proposed start date for the archaeological fieldwork will be confirmed in due course but is likely to be on the 9th July 2018. CECAS will be informed of the site mobile phone number prior to the start date so that monitoring visits can be arranged. It is envisaged that the metal detecting survey will take 13 days to complete. It is estimated that the evaluation of 7% of the development area will take 13 days to complete, with a further six days for the additional 3% contingency, should this be required. It is estimated that the unsupervised backfilling of trenches will take 7 days to complete and will immediately follow the conclusion of the evaluation. Backfilling of the additional 3% contingency, should this be required, will take an additional 3 days.

## Health & Safety and Insurance

- 14.1 GUARD Archaeology Ltd adheres to the guidelines and standards prescribed for archaeological fieldwork set down in the Institute for Archaeologists approved Health and Safety in Field Archaeology document, prepared under the aegis of the Standing Conference of Archaeological Unit Managers (SCAUM). It is standard GUARD policy, prior to any fieldwork project commencing, to conduct a risk assessment and to prepare a project safety plan, the prescriptions of which will be strictly followed for the duration of all archaeological fieldwork. Copies of the resultant project safety plan and of GUARD's Fieldwork Safety Policy Statement may be viewed upon request.
- 14.2 GUARD Archaeology Ltd also possesses all necessary insurance cover, proofs of which may be supplied upon request.

## Sources Consulted

Good, G 1893 *Liberton in ancient and modern times*. Edinburgh: Andrew Elliot.

Rennie, C 2016 *Lasswade Road, City of Edinburgh: Desk-based Cultural Heritage Assessment*. GUARD Archaeology unpublished report. Project 4325

**GUARD Archaeology Limited**  
**52 Elderpark Workspace**  
**100 Elderpark Street**  
**Glasgow**  
**G51 3TR**

**Tel: 0141 445 8800**

**Fax: 0141 445 3222**

**email: [info@guard-archaeology.co.uk](mailto:info@guard-archaeology.co.uk)**



**[www.guard-archaeology.co.uk](http://www.guard-archaeology.co.uk)**