



**Lang Loan, West Edge Farm, Edinburgh:
Monitored Topsoil Strip, Map, and Sample
Data Structure Report
Project 4914**

Lang Loan, West Edge Farm, Edinburgh: Monitored Topsoil Strip, Map, and Sample Data Structure Report

On behalf of: Persimmon Homes

NGR: NT 2850 6757 (centred)

Project Number: 4914

Report by: Dave McNicol

Illustrations: Jennifer Simonson

Project Manager: Warren Bailie

DRAFT 29/07/19	Warren Bailie Project Manager	FINAL 12/09/19	John Atkinson Managing Director
			

*This document has been prepared in accordance
with GUARD Archaeology Limited standard operating procedures.*

GUARD Archaeology Limited
52 Elderpark Workspace
100 Elderpark Street
Glasgow
G51 3TR

Tel: 0141 445 8800
Fax: 0141 445 3222
email: info@guard-archaeology.co.uk

Contents

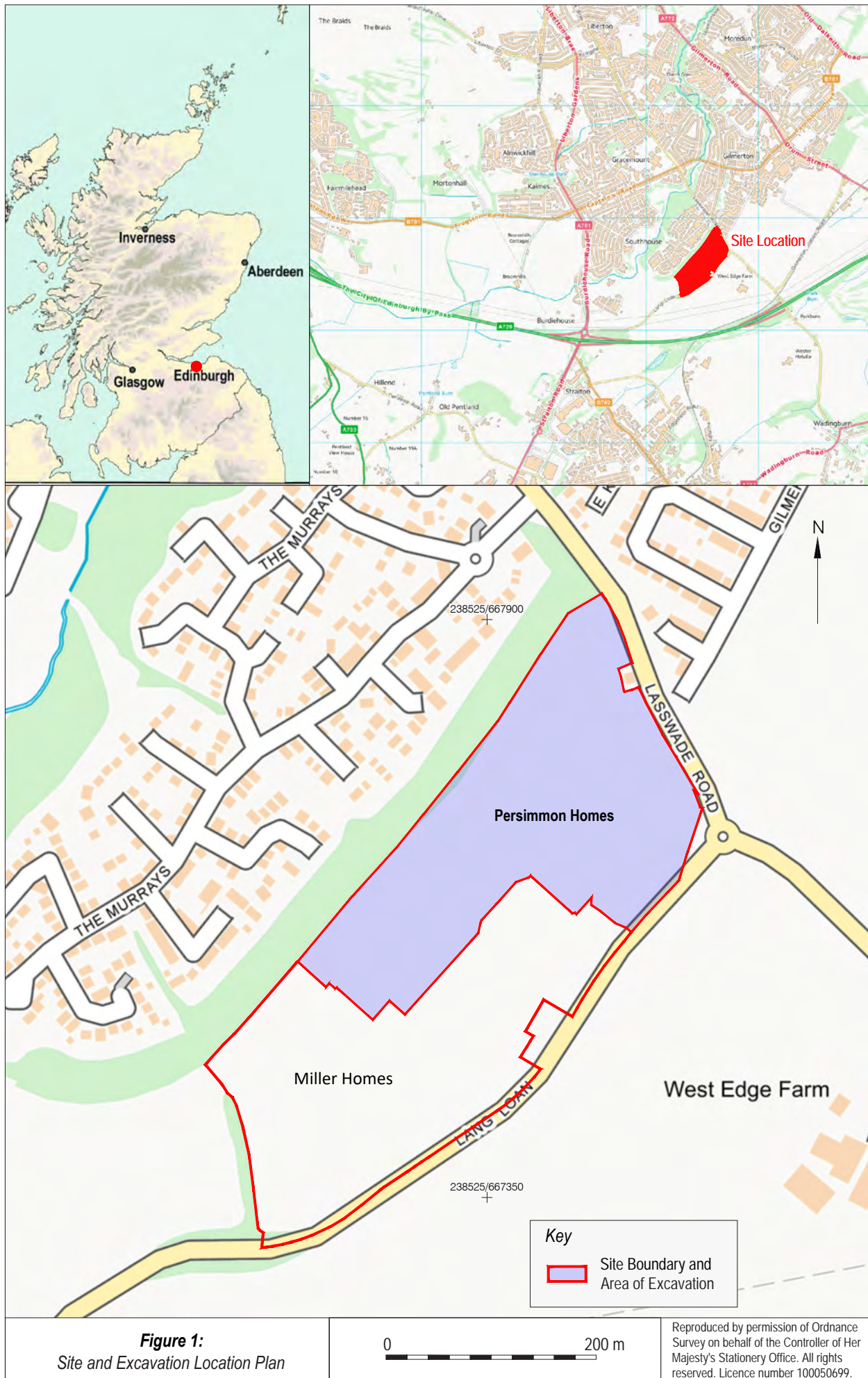
Executive Summary	5
Introduction	5
Site Location, Topography and Geology	5
Archaeological Background	6
Aims and Objectives	6
Methodology	7
Results	8
Discussion	14
Recommendations	15
Acknowledgements	16
Bibliography	16
Appendices	18
Appendix A: Context Descriptions	18
Appendix B: List of Drawings	30
Appendix C: List of Finds	31
Appendix D: List of Samples	32
Appendix E: List of Digital Images	33
Appendix F: Discovery and Excavation in Scotland Entry	46
Appendix G: WSI	47

List of Figures

Figure 1: Site and Excavation location plan	4
Figure 2: Site Plan	9
Figure 3: Excerpt from the 1855 Ordnance Survey 6" map Edinburghshire, Sheet 6 (includes: Edinburgh; Lasswade)	13
Figure 4: Excerpt from the 1885 Ordnance Survey 6" map Edinburghshire, Sheet 6 (includes: Edinburgh; Lasswade)	14
Figure 5: Excerpt from the 1893 Ordnance Survey 6" map Edinburghshire, Sheet VIII.NW (includes: Dalkeith; Edinburgh; Lasswade; Newton)	15

List of Plates

Plate 1: Edge of quarry scar 176. View from the south	8
Plate 2: Quarry pit/ shaft 161. View from the west	10
Plate 3: Section of quarry pit 154. View from the SW	10
Plate 4: Rectangular pit 119. View from the west	10
Plate 5: Section of rectangular pit 04. View from the north-west	10
Plate 6: Section of rectangular pit 17. View from the west	10
Plate 7: Section of waste pit 288. View from the north	11
Plate 8: Section of pit 528. View from the south-west	11
Plate 9: Linear drainage ditch 96. View from the south	12
Plate 10: Linear ditch 13. View from the SSE	12
Plate 11: Linear ditch 070. View from the south-west	12
Plate 12: Possible trackway/ pathway 125. View from the south-east	12
Plate 13: Section of boundary ditch 272. View from the north-west	13
Plate 14: Boundary ditch 516. View from the south-west	13
Plate 15: Section of rig and furrow 22. View from the south-east	13



Executive Summary

- 1.1 GUARD Archaeology Limited were commissioned by Persimmon Homes to undertake an archaeological monitored topsoil strip, map, and sample at Lang Loan, Edinburgh. This work was required as a condition of the planning permission (Planning Ref: 16/06036/PPP) for a residential development on the site. The work was undertaken between 14th May and 16th November 2018, and followed on from a metal detecting survey and trial trench evaluation carried out by GUARD Archaeology Limited between November and December 2017 (McNicol & Ruiz Nieto 2018). The metal detecting survey uncovered a mixture of nineteenth and twentieth century metal finds, including horseshoes, square headed iron nails, and iron agricultural fragments. The trench evaluation uncovered a number of features relating to quarrying activity across the site.
- 1.2 As a result of this previous phase of archaeological investigation, a total area amounting to 45,148 m² (approximately 69 % of the Persimmon development area) was stripped of topsoil to establish the extent of the archaeological features on site. This revealed 118 features associated with nineteenth century quarrying activity in the area, as well as medieval agricultural features, in the form of a series of rig and furrow, and an 1863 gold half sovereign.

Introduction

- 2.1 This report sets out the results of an archaeological monitored topsoil strip, map, and sample undertaken by GUARD Archaeology Ltd, on behalf of Persimmon Homes on an area proposed for a residential development at Lang Loan, West Edge Farm, Edinburgh. The work was carried out between 14th May and 16th November 2018 to investigate the extent of the archaeological remains that survived across the proposed development area. A total area amounting to 45,148 m² (approximately 69 % of the total development area) was stripped and 118 features associated with nineteenth century quarrying activity in the area, as well as medieval agricultural features, in the form of a series of rig and furrow, and a gold half sovereign dated to 1863 were uncovered.
- 2.2 The archaeological work was undertaken within the northern half of a field, with a contemporary archaeological monitored topsoil strip, map, and sample carried out by GUARD Archaeology Limited in the southern half of the field, on behalf of Miller Homes (McNicol, forthcoming).
- 2.3 The WSI Addendum outlined the programme of archaeological works that was needed to mitigate the effects of the development and was prepared in accordance with the archaeological conditions attached to the planning permission for the development (Planning Ref: 16/06036/PPP). It detailed the methodology to be employed in implementing the Stage 2 excavation works. The Stage 3 post excavation analysis and publication methodology, if required, will be specified in a Post-Excavation Research Design (PERD) which will accompany this report. The PERD will be submitted to the client, then for the agreement of City of Edinburgh Council Archaeological Service (CECAS), prior to the commencement of any archaeological post-excavation work. On confirmation that the developer has commissioned the agreed Stage 3 works, the planning condition will be partially discharged pending the final publication of the results when all necessary archaeological mitigation works for this development will have been completed. All phases of work will be funded by the developer as required by CECAS.

Site Location, Topography and Geology

- 3.1 The development area is located at Lang Loan, West Edge Farm, Edinburgh (NGR: centred at NT 2850 6757). It comprises a 65,175 m² area, located within the northern half of one field which were most recently used for growing crops (Figure 1); The Site is bounded to the north-east by Lasswade Road, to the south-east by Lang Loan, to the north-west by woodland, and to the south by a current Miller Homes residential development site (McNicol, forthcoming).
- 3.2 The solid geology consists of a mixture of Hopetoun Member – Sedimentary Rock Cycles, Strathclyde Group Type; Hurlet Limestone – Limestone; Lower Limestone Formation – Sedimentary Rock Cycles, Clackmannan Group Type; and Blackhall Limestone - Limestone. No information on the underlying drift geology is recorded (British Geological Survey, Geology of Britain Viewer).

Archaeological Background

- 4.1 An Environmental Impact Assessment (EIA) of the development area included a chapter that assessed the cultural heritage within and surrounding the Lang Loan development area. The cultural heritage assessment, which was carried out by GUARD Archaeology and included a walkover survey, identified the following sites within the development area.
- a cropmark enclosure (CHS 1; NMRS NT26NE 58), and
 - a former limestone quarry (CHS 2).
- 4.2 Potential prehistoric settlement within the development area is represented by the cropmark enclosure identified from aerial photography (CHS 1; photographed by RCAHMS in 1983, catalogue number SC 1458812). A trial evaluation by GUARD Archaeology Limited in 2017 revealed no evidence of Prehistoric activity in this area.
- 4.3 The former quarry (CHS 2) is first shown on the Ordnance Survey 6" map of 1855, where it is annotated as 'limestone quarries', suggesting that the quarries were operational at that time (Edinburghshire, Sheet 6). The quarry remained operational in 1877, but by 1895 was annotated as 'old quarries' (Edinburghshire Sheet VIII.NW). The quarry had been partially in-filled by 1909, and was fully restored during the later twentieth century.
- 4.4 In 2017 a metal detecting survey and trenched evaluation was carried out by GUARD Archaeology Limited on the proposed development site, as well as on the adjacent Miller Homes development site (McNicol & Ruiz Nieto 2018). Finds from the metal detecting survey included horseshoes, square headed nails, iron agricultural fragments, and general metal waste of nineteenth to twentieth century date.
- 4.5 A total of 78 trenches were excavated as part of the trial trench evaluation between November and December 2017. A number of features relating to nineteenth quarrying activity, along with possible medieval rig and furrow were uncovered during this phase of works.

Aims and Objectives

- 5.1 The aims of the archaeological monitored topsoil stripping, map, and sample were to:
- map the extent and nature of the quarry workings and rig and furrow within the development area;
 - identify the presence or absence of any archaeological deposits within the proposed area, and
 - ensure that any surviving archaeological remains encountered during the monitored topsoil stripping and excavation are recorded to an appropriate level.
- 5.2 The objectives were therefore to:
- conduct an archaeological monitored topsoil strip, map, and sample excavation of the development area, to establish the presence or absence of archaeological deposits and to determine their character, date and extent if surviving, and
 - submit a report to data structure level for agreement to CECAS, on completion of the archaeological fieldwork. The report will include an outline of the scope of any further post-excavation works should any significant archaeology be encountered.
- 5.3 The scope of the archaeological excavation and monitored topsoil stripping was:
- that once any apparent quarry working or rig and furrow features are recorded using GPS with minimal testing to establish their extent, no further work will be required for these features; and

- that if all other archaeological features are fully excavated and recorded, or if archaeological monitored topsoil stripping encounters no significant archaeological remains, no further archaeological fieldwork will be required for this development.

Methodology

6.1 All work will be conducted in line with the following standards and guidance of the Chartered Institute for Archaeologists (CIfA), of which GUARD Archaeology is a Registered Organisation:

- Code of conduct (2014);
- Standard and guidance for an archaeological watching brief (2014);
- Standard and guidance for archaeological field excavation (2014);
- Standard and guidance for the creation, compilation, transfer and deposition of archaeological archives (2014).

Archaeological Monitored Topsoil Strip, Map, and Sample

6.2 All works were carried out in accordance with the WSI Addendum and CECAS were consulted at appropriate opportunities with numerous site visits by CECAS taking place during the works. The proposed development area was machine stripped in a phased approach under archaeological supervision. The topsoil/ overburden was stripped using back acting excavators, equipped with a flat (toothless) bucket, under the constant supervision of GUARD Archaeologists (one per excavator unless working in tandem), who acted as supervisor and banksman.

6.3 The topsoil or overburden was removed in spits to the first archaeological horizon or, where none was found, to the natural subsoil. Where areas of potential archaeology were exposed, the area was cleaned to identify any archaeological features by a team of archaeologists working behind the monitoring archaeologist(s). Any archaeological features encountered were cleaned by hand by the on-site Archaeologist to determine their character and extent.

6.4 Where quarry working or rig and furrow features were uncovered the extent of such features was established using the backacting excavators and an appropriate investigative sondage was excavated by machine if appropriate, or by hand if more complex and/ or sensitive features were apparent. The extent of all quarry working features was surveyed using a sub-cm GPS and located within the National Grid. Where groups of similar quarrying/mining related features were apparent, it was agreed with CECAS that the investigation of a sample of them would be a sufficient level of recording.

6.5 Any significant archaeological features encountered were dealt with by the on-site Archaeologists. Where appropriate, a representative sample of negative-cut features were 25-50% excavated to determine their significance, date and function. If any feature was archaeologically significant, it was fully excavated and recorded to ensure its preservation through record. A full record of excavated features was made using a single context recording system using pro forma sheets, drawings, and photographs. All archaeological features were photographed and recorded at an appropriate scale. Sections were drawn at 1:10 and plans at 1:20 where appropriate. All features were accurately surveyed using a sub-cm GPS and located within the National Grid.

6.6 All archaeological finds were dealt with by the on-site Archaeologists. Finds and animal bone were collected as bulk samples by context. Significant small finds were three dimensionally located prior to collection. All finds will be processed to MAP2 type standards and subject to appropriate specialist assessment. If necessary, conservation of finds will be appraised to allow for specialist study.

6.7 All excavated feature fills and horizons were sampled as appropriate, using bulk soil samples, for palaeo-environmental evidence.

- 6.8 A representative section of each stripped area was recorded denoting depth of topsoil, any stratigraphy present and the nature of the soil. This information was logged in the day book together with a sketch drawn to scale and a photographic record of deposits.

Results

- 7.1 The results of the archaeological monitored topsoil stripping, map, and sample should be read in conjunction with the detailed descriptions within Appendices A-E and Figures 1 to 2.
- 7.2 An area of approximately 45,148 m² was stripped of topsoil. This revealed a total of 118 archaeological features, the majority of which relate to the nineteenth century quarrying activity. These will be discussed below by type. All features were issued with a context number for their cut along with one for each of their fills. Finds were collected by bulk and assigned a small finds number. With the exception of a 1863 gold half sovereign (SF# 25), found in an unstratified layer, all of the finds recovered consisted of a mixture of nineteenth century or later glass, pottery, tile, clay pipe fragments, buttons, and animal bone.
- 7.3 Following consultation with John Lawson at CECAS, 60 of the features uncovered were mapped and left unexcavated (006, 007, 024, 037, 072, 080, 100, 131, 147, 149, 153, 155, 157, 159, 163, 165, 167, 180, 182, 186, 191, 193, 195, 197, 199, 201, 203, 205, 206B, 210, 212, 214, 218, 220, 224, 227, 229, 231, 233, 235, 238, 239, 241, 243, 245, 251, 253, 255, 257, 280, 282, 284, 290, 500, 502, 509, 513, 530, 532, and 534). These features all related to nineteenth century quarrying activity, modern drainage, or rig and furrow. Excavation of the remaining 57 features was carried out to the point where their significance, date, and function, could be ascertained.
- 7.4 The ground was fairly flat with a slight dip towards the northern edge, measuring between 142 m AOD and 135 m AOD. An on average 0.3 m thick layer of topsoil 001 sealed the natural geology across the site. The natural geology consisted of an orangey brown sandy clay with patches of brownish grey sand and pale orogeny brown bedrock 002. Unless otherwise stated, all features encountered were cut into the natural geology.

7.5 Limestone Quarrying

- 7.5.1 The main quarry scar (176) for the nineteenth century limestone quarry was revealed running approximately north/ south through the middle of the Site (Plate 1). It continued outwith the Site to the north, and measured 290 m in length within the Site, with a further 144 m visible within the adjacent Miller Homes site to the south, where it terminated. It varied in width to a maximum of 96 m. Directly to the west, the edge of a possible connecting scar (513), or related quarrying activity was partially uncovered.



Plate 1: Edge of quarry scar 176. View from the south

- 7.5.2 A smaller quarrying scar (094) running parallel, and to the east of the main scar was also revealed. This measured 136 m in length within the Site, and continued to the north running across the entire Miller Homes development site for a further 96 m. It had an average width of 11.5 m. This followed the line of a visible limestone outcrop, and the quarrying activity was fairly limited in comparison to the main scar 176.
- 7.5.3 Five large areas of disturbance (189, 191, 193, 218, and 227) were located to the north-east of the quarry scar 094. Their location, size, and amorphous shapes may suggest that these are all related to the main limestone quarrying activity on site, rather than the smaller scale coal quarrying.

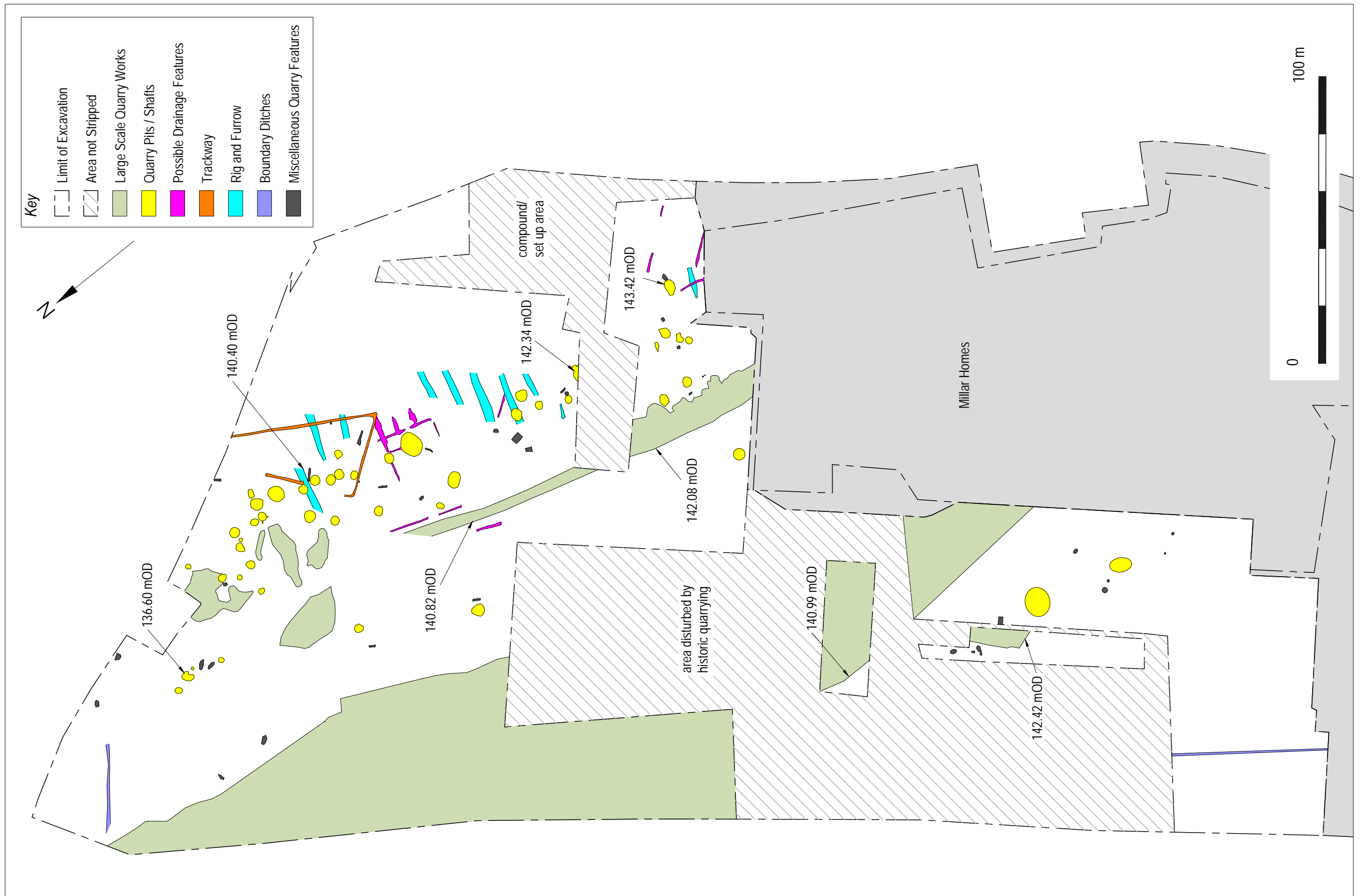


Figure 2: Site Plan

7.6 Quarry Pits/ Shafts

7.6.1 A total of 47 possible quarry pits/ shafts were uncovered on the Site (003, 005, 006, 007, 024, 028, 037, 039, 074, 080, 089, 100, 104, 112, 142, 146, 153, 159, 163, 173, 182, 186, 195, 197, 199, 201, 205, 210, 212, 214, 220, 224, 229, 233, 235, 237, 239, 241, 245, 255, 257, 280, 282, 284, 290, 530, and 534). The majority of these were located in a north/ south alignment, directly to the east of the limestone quarries 094 and 176, with two (530 and 534) located to the west of limestone quarry 176. All of these were sub-circular in shape and measured between 1.8 m and 7.2 m in diameter (Plate 2). Eleven of these features were partially excavated and revealed depths of at least 1 m, with the base not reached within the majority of them due to health and safety concerns. All of the possible quarry pits/ shafts were filled with similar deposits comprising of a brownish grey silty clay with patches of redeposited natural, along with coal, ash, and nineteenth century waste (glass, pottery, and animal bone) inclusions (Plate 3). It is likely that these represent coal mining pits. The smaller size of some of these features, may indicate that the coal seam in these areas was also relatively small.

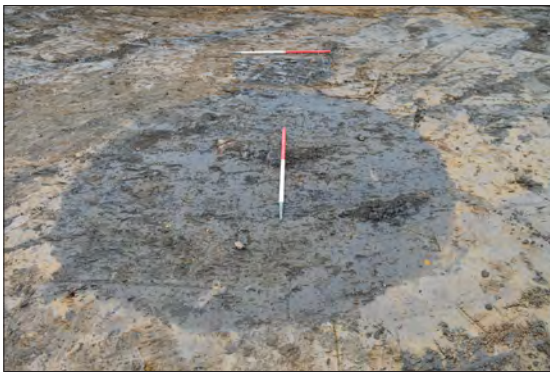


Plate 2: Quarry pit/ shaft 161. View from the west



Plate 3: Section of quarry pit 154. View from the SW

7.7 Quarrying Related Pits, Postholes, and Spreads

7.7.1 Eighteen rectangular pits (004, 017, 031, 061, 113, 119, 165, 170, 178, 180, 203, 231, 243, 286, 288, 500, 502 and 532) were uncovered across the Site in close proximity to the probable quarry pits/ shafts. These ranged in size from 1.2 m by 0.6 m (031) to 3 m by 2.6 m (061) (Plate 4). Eight of these were partially excavated and revealed an average depth of between 0.3 and 0.6 m, with two (004 and 061) having depths of greater than 1.3 m (Plate 5). These deeper pits may represent exploratory test pits for the quarry. The shallower pits may also represent exploratory test pits, or possibly foundation pits for quarrying machinery. The majority of the pits were filled with either a blackish grey or brownish grey silty clay deposit with frequent coal and stone inclusions (Plate 6). Two of the pits were filled with a redeposited natural deposit (113 and 243), and at least three of the pits (286, 288, and 500) (Plate 7), were filled with a high concentration of nineteenth century waste and are therefore likely to represent waste pits.

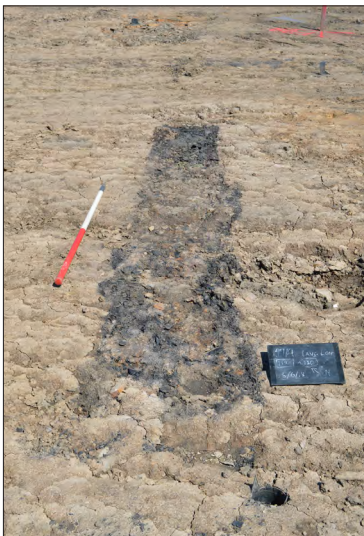


Plate 4: Rectangular pit 119. View from the west



Plate 5: Section of rectangular pit 04. View from the north-west



Plate 6: Section of rectangular pit 17. View from the west

- 7.7.2** Nine possible pits (057, 068, 161, 249, 274, 520, 524, 528 and 536), contemporary with mining activity were uncovered on the Site. All of these pits contained fills comprising of a dark blackish grey or greyish brown silty clay deposit with frequent coal and stone inclusions, similar to the fills of the surrounding quarry pits/ shafts (Plate 8). Although contemporary with the quarrying activity on Site, the function of these features is uncertain.



Plate 7: Section of waste pit 288. View from the north



Plate 8: Section of pit 528. View from the south-west

- 7.7.3** A further four possible pits (505, 507, 509, and 526) were uncovered to the west of quarry scar 176. All of these possible pits were filled with a similar greyish brown silty clay deposit. No finds or coal fragments were recovered from any of these features and therefore their date is uncertain. However, given their location, in the vicinity of quarry scar 513 and quarry pit/ shaft 534, it is likely that they are contemporary with the quarrying activity on the Site, although their function is uncertain.
- 7.7.4** Four possible postholes (033, 034, 135, and 522) were recorded on site. All four were filled with a similar dark brownish grey silty clay deposit with frequent coal and stone inclusions. However, given their uneven shape and lack of any other similar features across the site, it is likely that these represent areas of disturbance, rather than archaeological features.
- 7.7.5** Three spreads of dumped waste (026, 078, and 131), most likely from the nearby quarry pits/ shafts were also uncovered on Site. All of these were comprised of a grey silty clay deposit with coal and stone inclusions.

7.8 Quarrying Related Linear Features

- 7.8.1** Two parallel linear features (091 and 096), measuring 0.46 m and 0.88 m in width respectively, were uncovered running either side of quarry scar 96. These were filled with a greyish brown silty clay deposit (092) and a mottled orangey grey silty clay deposit (097). Both deposits had coal and stone inclusions, with the fill of linear 096 also containing burnt bone and medieval pottery. Only one of the linear features (096) was excavated and revealed a depth of 0.22 m (Plate 9). Their location, parallel to the quarry scar, along with the quantity of coal deposits within their fills, suggests they were part of a drainage system to take water away from the quarry edge.
- 7.8.2** A further ten linear features (013, 014, 015, 063, 070, 072, 076, 078, 115, and 140) were uncovered on the Site. These measured on average between 0.3 m and 0.6 m in width, with depths of between 0.04 m and 0.13 m. Three (013, 014, and 015) were located to the south of the Site, in close proximity to quarry pit/ shaft 003. All three were filled with a similar compact blackish grey silt and shale deposit (Plate 10). The compact and stone rich nature of the fills of these linear features may suggest they were used as pathways or as the foundations for quarrying equipment.
- 7.8.3** The remaining seven linear features uncovered on the Site were filled with either a brownish grey or dark grey silty clay deposit, all of which contained frequent stone and coal fragments (Plate 11). Six of these were located around quarry pits/ shafts 074 and 080, with the seventh located adjacent to quarry pits/ shafts 142 and 153. Given their close proximity to these quarry pits/ shafts, it is likely that they formed part of a temporary drainage system to keep water away

from the nearby quarrying activity. The amorphous nature of linear features 070, 072, 080 may be due to part of them consisting of a spread of upcast material from the nearby quarry pits/shafts, or an overflow of material from the drains.



*Plate 9: Linear drainage ditch 96.
View from the south*



*Plate 10: Linear ditch 13. View from
the SSE*



*Plate 11: Linear ditch 070. View from
the south-west*



*Plate 12: Possible trackway/ pathway
125. View from the south-east*

- 7.8.4** A possible pathway or trackway, enclosing a roughly triangular area which contained five quarry pits/ shafts (146, 199, 201, 255, and 257), and in close proximity to a further nine quarry pits/ shafts (074, 080, 089, 100, 195, 197, 205, 210, and 241) was uncovered at the eastern end of the Site. It measured on average 1.1 m wide, with a depth of up to 0.09 m, and was filled with a compact dark black shale and coal deposit (126) (Plate 12).

7.9 Field Boundaries and Rig and Furrow

- 7.9.1** Two field boundary ditches, aligned roughly north-west/ south-east (272) and north-east/ south-west (516) were uncovered towards the northern and western end of the Site respectively. Ditch 272 measured 1.5 m in width, with a depth of 0.5 m and was filled with brown silty clay (271) (Plate 13). Its location fits the approximate location of a boundary shown on the 1855 OS map (Figure 3), most likely associated with the limestone quarry as it was not shown on the later 1895 OS map recorded after the quarry had ceased to operate.



Figure 3: Excerpt from the 1855 Ordnance Survey 6" map Edinburghshire, Sheet 6 (includes: Edinburgh; Lasswade).

Reproduced by permission of the Trustees of the National Library of Scotland.

- 7.9.2** The second ditch (516) measured 0.96 m in width, with a depth of 0.43 m, and was filled with a brownish grey silt clay (517) (Plate 14). Its location fits the approximate location of a field boundary shown on the 1855 OS map (Figure 3).



Plate 13: Section of boundary ditch 272. View from the north-west



Plate 14: Boundary ditch 516. View from the south-west

- 7.9.3** A line of up to ten linear ditches (022, 147, 149, 151, 155, 157, 167, 206B, 251, and 253), most likely representing medieval rig and furrow, were uncovered within the eastern half of the Site. These were all aligned roughly WNW/ESE and measured on average 2.4 m in width, with a depth of 0.12 m (Plate 15). They were all filled with a similar greyish brown sandy clay deposit, with four (022, 206B, 251, and 253) of them truncated by the later quarrying activity on the Site.



Plate 15: Section of rig and furrow 22. View from the south-east

Discussion

- 8.1 The earliest features uncovered relate to likely Medieval agricultural practices in the form of a series of rig and furrow towards the south-eastern edge of the Site. A field boundary ditch, pre-dating 1894 was also uncovered at the north-western edge of the Site. Outwith these, all other features uncovered on site, with the exception of the modern drainage works, relate to the nineteenth century quarrying activity.
- 8.2 The two quarry scars (096 and 176) which run approximately north/ south through the middle of the Site, likely follow the line of limestone seams which were mined at Edgehead Quarry/ Gilmerton Limestone Mine. The smaller quarry scar followed a visible limestone outcrop and was only partially quarried. This would suggest that the quarrying activity was either only short-lived or that the quantity/ quality of limestone from here was not enough to continue work.
- 8.3 The main quarry scar (176) is shown on the 1855 OS map, marked as Limestone Quarries. Neither the smaller quarry scar (096) or the contemporary quarry pits/ shafts are marked on any of the OS maps. This is likely due either to the scale of recording, or to the possibility that they were in and out of use between the recording of the maps.
- 8.4 The smaller quarry pits/ shafts uncovered on the Site likely represent coal mining or exploratory shafts, as although it is possible to mine limestone from a shaft, this is far more difficult (Nisbet, 2005/6). The coal would have been used at least partially, in lime kilns for sourcing lime from the extracted limestone. This process was usually carried out in close proximity to the quarrying activity and an area directly to the north of the Site is marked as Kilngate on the 1855 OS map (Figure 3), suggesting this was where it was carried out, as no evidence of any kilns were uncovered on the Site.
- 8.5 Quarrying at Gilmerton is known from 1627, however this is likely in reference to the main Gilmerton Coal Quarry located to the east. Information on the limestone quarrying on the Site is scarce, although it is noted that limestone quarrying restarted at Gilmerton in 1824 and continued until around 1828 (Russell 2012).
- 8.6 Quarrying ceased at Gilmerton Quarry between 1828 and 1849 due to the expiry of a lease with coal mining restarting in the 1850s. Although there is no documentary evidence that the quarrying of limestone continued when the mine was reopened, the recovery of an 1863 half sovereign (SF25), although unstratified, may suggest that it did.



Figure 4: Excerpt from the 1885 Ordnance Survey 6" map Edinburghshire, Sheet 6 (includes: Edinburgh; Lasswade).
Reproduced by permission of the Trustees of the National Library of Scotland.



Figure 5: Excerpt from the 1893 Ordnance Survey 6" map Edinburghshire, Sheet VIII.NW (includes: Dalkeith; Edinburgh; Lasswade; Newton). Reproduced by permission of the Trustees of the National Library of Scotland.

- 8.7 The quarry is marked as Old Quarries on the 1895 OS map (Figure 5), with multiple trees lining the edge. This would suggest that any quarrying activity ceased soon after the 1877, the survey date of the 1885 OS map, where the quarry is still marked as Limestone Quarries, and only a few trees are recorded (Figure 4).

Recommendations

- 9.1 The excavations at Lang Loan, West Edge Farm, Edinburgh have revealed significant quarrying activity dating to the nineteenth century, along with earlier medieval agricultural activity in the form of a series of rig and furrow.
- 9.2 The extent of the quarrying activity within the site has been mapped and in consequence, it is recommended that no further archaeological fieldwork is required for this Persimmon development. However, CECAS may require some analysis and conservation on the metal artefacts recovered during the metal detecting survey, and the gold sovereign recovered during the strip, map and sample exercise. In light of recent findings of major prehistoric pit alignments on the site to the north-east of this development, CECAS have recommended that features that are potentially contemporary with this activity are dated for comparison. It is recommended that the features are reviewed for appropriate samples which could be processed and analysed with the view to radiocarbon date up to 5 of the relevant features.
- 9.3 GUARD Archaeology would stress that these recommendations are intended for guidance only. While the recommended mitigation strategy was developed following consultation with John Lawson of CECAS, final decisions on the nature and extent of any future archaeological work rest with the planning authority.
- 9.4 A summary of the project results will be submitted to Discovery and Excavation in Scotland. A copy of this is included in Appendix F. The archive for the project, including a copy of the report, will be submitted to the National Monuments Records for Scotland within six months of the completion of all fieldwork.
- 9.5 The online OASIS form at <http://ads.ahds.ac.uk/project/oasis/> for this project (OASIS Reference: guardarc1-360281) will be completed within 3 months. Once the Data Structure Report has become a public document by submission to or incorporation into the SMR, the archaeological advisor to CECAS will validate the OASIS form thus placing the information into the public domain on the OASIS website.

Acknowledgements

- 10.1 GUARD Archaeology would like to thank Persimmon Homes for commissioning the work and their assistance throughout the project. Plant and drivers were supplied by Tough Construction. Technical support was from Aileen Maule, Clark Innes, and Jen Cochrane. The project was directed in the field by Thomas Muir with assistance from Ashleigh Airey, Alan Hunter Blair, Anthony Byledbal, Orla Craig, Genoveva Dimova, John Gillen, Kenneth Green, Jamie Henderson, Juan Ignacio de Vicente Ojeda, Ivelina Kondova, Kimberley Nash, Eduardo Pérez-Fernández, Karolina Saxerbo Sjoberg, and Claire Shaw. Dave McNicol wrote the report with Jennifer Simonson producing the report illustrations. The report was desk top published by Gillian Sneddon. The project was managed for GUARD Archaeology Limited by Warren Bailie.

Bibliography

McNicol, D forthcoming Lang Loan, West Edge Farm, Edinburgh: Monitored Topsoil Strip, Map, and Sample. GUARD Project 4988. Unpublished report

McNicol, D and Ruiz Nieto, N 2018 Lang Loan, Edinburgh: Metal Detecting Survey and Evaluation. GUARD Project 4770. Unpublished report

Nisbet, S 2005/6 The Archaeology of the Lime Industry in Renfrewshire in: Renfrewshire Local History Forum Journal Vol. 13

Russell, A 2012 Gilmerton Coalworks – Short History of the Colliery; accessed at <http://www.hoodfamily.info/coal/gilmerton.html>

Online resources:

British Geological Survey, Geology of Britain viewer; <http://mapapps.bgs.ac.uk/geologyofbritain/home.html>; last accessed 11th July 2019

Cartographic Sources Consulted

Ordnance Survey 1855 Edinburghshire, Sheet 6 (includes: Edinburgh; Lasswade). Six-inch 1st edition, Scotland.

Ordnance Survey 1885 Edinburghshire, Sheet 6 (includes: Edinburgh; Lasswade). Six-inch 1st edition, Scotland.

Ordnance Survey 1893 Edinburghshire, Sheet VIII.NW (includes: Dalkeith; Edinburgh; Lasswade; Newton). Six-inch 2nd and later editions, Scotland, 1892-1960.

**Lang Loan, West Edge Farm, Edinburgh:
Monitored Topsoil Strip, Map, and Sample
Data Structure Report**

Section 2: Appendices



www.guard-archaeology.co.uk

Appendices

Appendix A: Context Descriptions

Context No	Area	Description	Interpretation
001	P. Ph1	Deposit: A firm, mid brown grey clayish silt with frequent small subrounded and subangular stones, 0.20-0.40m deep.	Topsoil across whole site
002	P. Ph1	Deposit: A compact, pale orange brown sandy clay with occasional patches of limestone running in N-S deposits	Natural subsoil
003	P. Ph1	Cut: Sub-circular in plan with almost vertical sides, measuring 4.90m long by 3.50m wide and 1.20m + deep. The base was not reached	Cut of pit filled by 019. Possibly a mine shaft. Associated with pit 017.
004	P. Ph1	Cut: Rectangular in plan with vertical sides, measuring 1.29m long by 0.92m wide, and 1.4m+ deep. The base was not reached.	Cut of pit filled by 021. Related to mining activity.
005	P. Ph1	Cut: Sub-circular in plan with moderate sloped sides and a flattish base. It measured 2.80m long by 2.80m wide and 1.3m deep.	Cut of pit filled by 023. Possibly a mine shaft.
006	P. Ph1	Cut: Sub-circular in plan, measuring 2.70m long by 1.40m wide.	Cut of pit filled by 030. Possibly a mine shaft.
007	P. Ph1	Cut: Sub-circular in plan, measuring 5.40 long by 2.30m wide.	Cut of pit filled by 008. Possibly a mine shaft.
008	P. Ph1	Fill: A compact, dark grey silty clay with occasional small shale and coal inclusions.	Fill of pit 007
009	P. Ph1	Fill: A firm, dark grey brown clay silt with frequent small sub-rounded stones and coal inclusions.	Fill of furrow 022
010	P. Ph1	Fill: Compact, mid black grey shale-like stones with frequent coal inclusions.	Fill of linear 013
011	P. Ph1	Fill: Compact, mid black grey shale-like stones with frequent coal inclusions.	Fill of linear 014
012	P. Ph1	Fill: Compact, mid black grey shale-like stones with frequent coal inclusion.	Fill of linear 015. Cuts furrow 022
013	P. Ph1	Cut: Linear in plan, oriented NW-SE, with shallow sloping sides and a flattish base, measuring 7m+ long by 0.37m wide and 0.04m deep. Continues outside the site to the SW.	Cut of gully associated with mining activity filled by 010. Runs parallel to 014. same feature as 065.
014	P. Ph1	Cut: Linear in plan, oriented NW-SE, with shallow sloping sides and a flattish base, measuring 11m long by 0.70m wide and 0.08m deep.	Cut of gully associated with mining activity filled by 011. Runs parallel to 013.
015	P. Ph1	Cut: Linear in plan, oriented N-S, with steep sides and a flattish base, measuring 2.5m long by 0.61m wide and 0.04m deep.	Cut of linear filled by 012
016	VOID	VOID	VOID
017	P. Ph1	Cut: Sub-rectangular in plan, with vertical sides, measuring 2.10m long by 1.3m wide and 0.40m+ deep. The base was not reached.	Cut of a pit filled by 018.
018	P. Ph1	Fill: A firm, mid black grey sandy silt with frequent moderate, subangular stone and coal inclusions and brick fragments.	Fill of pit 017
019	P. Ph1	Fill: A firm, mid black grey silty sand with frequent shale-like stones and coal inclusions.	Fill of pit 003
020	VOID	VOID	VOID
021	P. Ph1	Fill: A firm, mid black grey silty sand with frequent shale-like stones and coal inclusions.	Fill of pit 004
022	P. Ph1	Cut: Linear in plan, with steep sides and a flattish base, measuring 9.9m long by 1.51m wide and 0.12m deep.	Cut of furrow filled by 009. Cut by linear 015.
023	P. Ph1	Fill: A compact, mid brown grey sandy clay with occasional small sub-angular stones and coal inclusions.	Fill of possible mine shaft 005
024	P. Ph1	Cut: Sub-circular in plan, measuring 2.84m long by 2.75m wide.	Cut of a pit filled by 025. Possibly a mine shaft.
025	P. Ph1	Fill: A firm, mid brown grey silty clay with occasional coal inclusions and sandstone.	Fill of pit 024
026	P. Ph1	Cut: Rectangular in plan with steep sides and a flattish, undulating base, measuring 1.0m long by 0.86m wide and 0.07m deep.	Cut of pit filled by 027. Related to mining activity.

Context No	Area	Description	Interpretation
027	P. Ph1	Fill: A firm, light brown grey silty clay with frequent shale-like stone and coal inclusions.	Fill of pit 026
028	P. Ph1	Cut: Sub-circular in plan with steel, possible stepped sides, measuring 2.3m long by 2.3m wide and 0.93m+ deep. The base was not reached.	Cut of a pit filled by 029. Possibly a mine shaft.
029	P. Ph1	Fill: A compact, dark orange brown silty clay with occasional coal inclusions.	Fill of pit 028.
030	P. Ph1	Fill: A firm, light brown grey silty clay with occasional gravel inclusions.	Fill of pit 006
031	P. Ph1	Cut: Rectangular in plan, with very steep sides and a flattish base, measuring 1.17m long by 0.65m wide and 0.29m deep.	Cut of pit filled by 032. Related to mining activity.
032	P. Ph1	Fill: A firm, mid black grey clayish silt with shale-like stones and frequent coal inclusions. SF 002 - Pot	Fill of rectangular pit 031. Associated with previous mining activity.
033	P. Ph1	Cut: Sub-oval in plan with gently sloping sides and a concave base, measuring 0.48m long by 0.31m wide and 0.10m deep.	Cut of posthole filled by 034. Related to mining activity.
034	P. Ph1	Fill: A firm, dark brown grey silty clay with coal inclusions.	Fill of posthole 033
035	P. Ph1	Cut: Sub-circular in plan with gently sloping sides and a concave base, measuring 0.40m long by 0.27m wide and 0.08m deep.	Cut of posthole filled by 036. Related to mining activity.
036	P. Ph1	Fill: A firm, dark brown grey silty clay with occasional gravel and frequent coal inclusions.	Fill of posthole 035.
037	P. Ph1	Cut: Sub-circular in plan, measuring 4.20m long by 4.0m wide.	Cut of pit filled by 038. Possibly a mine shaft.
038	P. Ph1	Fill: A compact, light brown grey clay silt.	Fill of pit 037.
039	P. Ph1	Cut: Sub-circular in plan with steep sides and a concave base, measuring 3.70m long by 3.55m wide and 1.40m deep.	Cut of pit filled by 040, 041, 042, and 043. Possible exploratory mine shaft.
040	P. Ph1	Fill: A compact, mid grey brown silty clay with occasional small sub-rounded stones, 1.04m thick.	Uppermost fill of pit 039.
041	P. Ph1	Fill: A firm, dark black grey, silty coal dust, 0.24m thick.	Third fill of pit 039
042	P. Ph1	Fill: A firm, mid grey orange silty clay with frequent gravel inclusions, 0.70m thick.	Secondary fill of pit 039. Redeposited natural.
043	P. Ph1	Fill: A firm, mid grey brown silty clay, 0.14m thick.	Primary fill of pit 039.
044	P. Ph1	Deposit: Uneven, friable black coal, measuring 4.20m wide and 1.5m thick	Natural coal deposit running through the site
045	P. Ph1	Deposit: Compact, mid white grey siltstone.	Natural bedrock.
046	VOID	VOID	VOID
047	VOID	VOID	VOID
048	VOID	VOID	VOID
049	VOID	VOID	VOID
050	P. Ph1	Natural around clay deposit 051.	Natural.
051	P. Ph1	Deposit: Firm, dark orange brown clay with mottled black patches, 1.25m long by 1.8m+ wide and 0.20m+ deep.	Natural clay deposit.
052	P. Ph1	Natural around clay deposit 053.	Natural.
053	P. Ph1	Deposit: Firm, dark orange brown clay with mottled black patches, 5.70m long by 1.8m+ wide and 1.08m+ deep.	Natural clay deposit.
054	P. Ph1	Deposit: Uneven, friable black coal, measuring 2.05m long by 0.10m+ wide and 0.85m+ thick in this area.	Natural coal deposit running through the site
055	P. Ph1	Deposit: A firm, dark grey black silty clay with gravel patches, measuring 4.0m long by 1.8m wide+.	Natural.
056	P. Ph1	Deposit: A firm, mixed mid orange/brown and grey silty clay	Natural.
057	P. Ph1	Cut: Curvilinear in plan with gently sloping sides and a flattish base 2.95 m length by 0.46 m width and 0.10 m deep with an orientation NE-SW changing to E-W at south end.	Cut of curvilinear feature, filled by 058.
058	P. Ph1	Fill: A friable, dark blackish grey sandy silt with frequent coal inclusions and occasional small stones.	Fill of curvilinear feature 057 Related to mining activity.
059	P. Ph1	Cut: Circular in plan, with gently sloping sides and a shallow concave base, measuring 0.32 m long by 0.30 m width by 0.04 m depth.	Probable backfill disturbance from evaluation trench

Context No	Area	Description	Interpretation
060	P. Ph1	Fill: A compact, mid brown grey silty clay with small shale-like stone and coal inclusions.	Probable backfill disturbance from evaluation trench
061	P. Ph1	Cut: Rectangular in plan with vertical sides, 3.05m long by 2.60m wide, and 1.30m+ deep. The base was not reached.	Cut of pit filled by 062, related to mining activity.
062	P. Ph1	Fill: A compact, dark orange brown silty clay, with moderate shale stone and coal inclusions.	Fill of pit 061.
063	P. Ph1	Cut: Linear in plan, oriented E-W, with steep sides and a concave base, measuring 5.30m long by 0.30m wide and 0.10m deep.	Cut of drain
064	P. Ph1	Fill: A firm, light brown grey (with occasional dark grey patches) silty clay with occasional small stone and coal inclusions.	Fill of drain 063
065	P. Ph1	Cut: Linear in plan, oriented NW-SE, with steep sides and a concave base, measuring 8.52m long by 0.65m wide, and 0.19m deep.	Cut of linear gully filled by 066, continuation of 013.
066	P. Ph1	Fill: A compact, dark grey to ashy pale grey silty clay with frequent shale-like stone and coal inclusions.	Fill of linear gully 065
067	P. Ph1	Fill: A compact, light black grey clay silt with occasional small stone and coal inclusions.	Fill of pit 068
068	P. Ph1	Cut: Sub-oval in plan with moderate sloping sides and a concave base, measuring 1.74m long by 1.25m wide and 0.28m deep.	Cut of pit filled by 067, related to mining activity.
069	P. Ph1	Fill: A firm, dark grey silty clay with occasional small stone and coal inclusions.	Fill of linear feature 070.
070	P. Ph1	Cut: An amorphous linear feature in plan, oriented NE-SW, with moderate sloping sides and a concave base, measuring 7.6m long by 0.6-0.7m wide and 0.09-0.13m.	Cut of linear feature filled by 069.
071	P. Ph1	Fill: A firm, mid black grey silty clay.	Fill of L-shaped linear 072.
072	P. Ph1	Cut: linear in plan, measuring 4.42m N-S and 7.19m E-W, and 1.07m wide.	Cut of a linear feature filled by 071. Very similar to 070
073	P. Ph1	Fill: A firm, dark grey brown sandy clay, moderate small to large sub-angular inclusions of sandstone, and moderate small coal inclusions.	Fill of mineshaft cut 074.
074	P. Ph1	Cut: Sub-circular in plan with steep sides, measuring 7.8m long by 7.8m wide, and 0.88m+ deep. Base not reached.	Cut of mineshaft filled by 073.
075	P. Ph1	Fill: A firm, light grey silty clay with occasional small sub-rounded stone and coal inclusions.	Fill of linear gully of 076
076	P. Ph1	Cut: Linear in plan oriented E-W, with moderate sloping sides and a flattish base, 4.14m long by 0.65m wide and 0.05m deep.	Cut of linear gully filled by 075, related to mining activity.
077	P. Ph1	Fill: A compact, mid black grey silty clay with frequent (c60%) coal inclusions.	Fill of coal rich spread 078
078	P. Ph1	Cut: Amorphous in plan, 1.8m long by 0.28m wide and 0.11m deep.	spread with coal rich fill 077. May be waste/upcast from quarry
079	P. Ph1	Fill: A firm, light to dark grey silty clay with occasional small coal inclusions. No finds.	Fill of pit 080.
080	P. Ph1	Cut: Circular in plan, measuring 3.52 m length by 3.42 m width.	Cut of pit filled by 079.
081	P. Ph1	Cut: Linear in plan, oriented SSE-NNW, with moderate sloping sides and a concave base, measuring 3.55m long by 0.23m wide and 0.10m deep.	Cut of stone filled field drain
082	P. Ph1	Fill: A compact, mid brown grey silty clay with frequent small subrounded stones.	Fill of field drain 081.
083	P. Ph1	Cut: Linear in plan, oriented NW-SE, with uneven moderate to steep sloping sides and a concave base, measuring 13.3m long by 0.79m wide and 0.27m deep. orientated NW-SE.	Cut of stone filled field drain
084	P. Ph1	Fill: A firm, light brown grey silty clay with frequent small and moderate sub-angular stone inclusions.	Fill of field drain 083.
085	P. Ph1	Cut: Linear in plan, oriented NW-SE, with steep sloping sides and an undulating base, feature, 31.5m+ by 0.4m width and 0.12m deep. SF 011 - Pot	Cut of stone filled field drain

Context No	Area	Description	Interpretation
086	P. Ph1	Fill: A compact, mid greyish brown silty clay with moderate to frequent stone inclusions. Contained modern pottery SF 011.	Fill of field drain 085.
087	VOID	VOID	VOID
088	VOID	VOID	VOID
089	P. Ph1	Cut: Sub-circular in plan, oriented NE-SW, with steep, irregular sides, measuring 3.42m long by 3.33m wide and 0.87m deep.	Cut of pit filled by 090. Possibly a mine shaft.
090	P. Ph1	Fill: A firm, dark grey brown/orange brown clay with frequent small shale, coal, mudstone and sandstone inclusions.	Fill of 089.
091	P. Ph1	Cut: Linear in plan, oriented NW-SE, measuring 26.6m long by 0.46m wide.	Cut of stone filled field drain
092	P. Ph1	Fill: A firm, mid grey brown silty clay, with frequent sandstone inclusions.	Fill of field drain 091.
093	P. Ph1	Fill: A firm, light grey silty clay, with occasional sandstone, shale and coal inclusions.	Secondary fill of pit 104, above fill 108.
094	P. Ph1	Cut: Linear feature N-S orientation, gradual slope and concave base, measuring 33.6m long by 1.48m wide by 0.35m deep.	Cut of quarry scar. Continues to south
095	P. Ph1	Fill: A firm, mixed light and medium brown silty clay, with occasional small sandstone, coal and shale inclusions.	Fill of quarry 094.
096	P. Ph1	Cut: Linear in plan, oriented N-S, with steep sloping sides and a flattish base, measuring 9.3m long by 0.88m wide and 0.22m deep	Cut of a linear filled by 097.
097	P. Ph1	Fill: A firm, mottled orange grey clay, with occasional medium sub-angular sandstone and charcoal, and moderate coal inclusions. Pottery SF 004 and burnt bone SF 012.	Fill of linear cut 096.
098	VOID	VOID	VOID
099	VOID	VOID	VOID
100	P. Ph1	Cut: Circular in plan, measuring 1.20m+ long by 1.22m wide.	Cut of mine shaft filled by 101.
101	P. Ph1	Fill: A firm, light to medium grey silty clay, with occasional small sandstone and shale inclusions.	Fill of mine shaft 100.
102	P. Ph1	Cut: Linear in plan, oriented E-W, measuring 5.96m long by 0.46m wide.	Cut of stone filled field drain
103	P. Ph1	Fill: A friable, mid grey brown silty clay with moderate small subangular stone, sandstone and inclusions.	Fill of field drain 102.
104	P. Ph1	Cut: Sub-circular in plan, with steep sloping sides, measuring 4.57m long by 4.75m wide and 1.0m+ deep. The base was not reached.	Cut of mine shaft filled by 093 and 108.
105	P. Ph1	Fill: A firm, dark black grey silty clay, with frequent small coal and shale inclusions.	Probable backfill disturbance from evaluation trench
106	P. Ph1	Cut: Sub rectangular in plan, oriented NE-SW, Irregular and undulating shape, measuring 0.98m long by 0.66m wide by 0.55m deep.	Probable backfill disturbance from evaluation trench
107	P. Ph1	Deposit: A compact, dark grey black coal, natural coal seam, 0.7m+ visible.	Natural coal seam
108	P. Ph1	Fill: A friable, mid black grey silty clay, with frequent small coal and shale inclusions.	Primary fill of mine shaft 104
109	P. Ph1	Fill: A firm, mid orange brown clay, with frequent coal, heat affected clay, and small sandstone inclusions. Contained pottery SF 013, and burnt bone SF 014.	Third fill of pit 112.
110	P. Ph1	Fill: A firm, reddish orange silty clay.	Lower fill of pit 112
111	P. Ph1	Fill: A friable, dark grey black silty clay, with very frequent shale inclusions.	Secondary fill of pit 112.
112	P. Ph1	Cut: Sub-circular in plan, with steep sloping sides, measuring 2.75m long by 2.75m wide, and 0.55m+ deep. The base was not reached.	Cut of a pit filled by 110 and 111.
113	P. Ph1	Pit Cut: 1.57m long by 0.75m wide by 0.48m deep. NW-SE. Sub-rectangular. Steep sides. Slightly rounded base. Filled by 114.	Pit cut
114	P. Ph1	Pit Fill: Dark orange brown clay. Occasional small coal fragments. 0.48m deep. Fills cut 113.	Fill of pit cut 113.

Context No	Area	Description	Interpretation
115	P. Ph1	Cut: 6.02m long by 0.56m wide by 0.08m deep. NW-SE. Linear. 20' slope, irregular. Rounded U-shape (irregular) base. Filled by 116.	115 is the cut of linear feature leading towards mine shaft 117.
116	P. Ph1	Fill: Mixed brown/grey silty clay. Firm compaction, occasional coal and sandstone. 0.08m deep, 0.56m thick and 6.02m extent.	116 is the fill of linear feature 115.
117	VOID	VOID	VOID
118	VOID	VOID	VOID
119	P. Ph1	Cut of linear feature. 2.87m long by 0.55m wide by 0.51m deep. NE-SW. Rectangular. 90' sides on SE and NW sides. Undulating base. Filled by 120.	Linear feature filled with dark shale-rich fill 120.
120	P. Ph1	Dark fill of 119. Dark grey-black silty clay. 80% shale, friable compaction. 0.51m deep, 0.55m thick and 2.87m extent.	Dark, shale-rich filled linear feature 119.
121	VOID	VOID	VOID
122	VOID	VOID	VOID
123	VOID	VOID	VOID
124	VOID	VOID	VOID
125	P. Ph1	Cut: 30.3m long, extent not fully revealed, 9.22m visible. Up to 1.1 m wide. Depth minimum 0.03m, maximum 0.09m. SE-NW. Sub-rectangular. Somewhat anepherous in areas. Gradually sloping 30-40' angle to a flattened base. Base partly flat. Filled by 126.	125 is the cut of a linear feature/s. To the N end of feature, cut becomes less visible. Width suggests possible trackway
126	P. Ph1	Fill: Dark black - light grey (N end) silty clay. Firm compaction, shale coal, and yellow sandstone inclusions. 0.03-0.09m deep, 9.22m extent visible and 30.3m extent. SF 019 - Pot, SF 018 - Ceramic Tile	126 is the fill of 125. The fill changes from dark black with coal inclusions to a light grey with very rare inclusions of coal/shale.
127	VOID	VOID	VOID
128	VOID	VOID	VOID
129	VOID	VOID	VOID
130	VOID	VOID	VOID
131	P. Ph1	Cut: 2.75 m long by 0.92m wide. Depth not fully revealed. Rectangular. Filled by 132.	131 is possibly a spread
132	P. Ph1	Fill: Light to medium grey silty clay. Firm compaction, coal and shale inclusions around edge of feature. Depth not revealed, 0.92m wide and 1.38m extent.	132 is fill of 131
133	VOID	VOID	VOID
134	VOID	VOID	VOID
135	P. Ph1	Cut: 0.29m long by 0.32m wide by 0.06m deep. Sub-square. 70' slope, irregular U-shape. Irregular U-shaped base. Filled by 136. SF 015 - Bone	135 is cut of a shallow ph/ disturbance. Filled by 136.
136	P. Ph1	Fill: Dark grey brown silty clay. Firm compaction, inclusions of sandstone and very rare burnt bone. 0.6m deep, 0.32m thick and 0.29m extent. SF 015 - Bone	136 is fill of poss pit 135.
137	P. Ph1	Fill: Dark brown grey. Firm compaction, coal, shale and occasional sandstone inclusions. Machine depth 0.38m, thickness not revealed and approx 3.03m extent.	137 is the fill of feature 146.
138	VOID	VOID	VOID
139	VOID	VOID	VOID
140	P. Ph1	Cut of linear feature. 6.10m long by 0.43m wide by 0.05m deep. NW-SE. Linear. Straight sides. Irregular, lumpy base. Filled by 141.	140 is the cut of linear feature associated with mining activity on site.
141	P. Ph1	Fill of linear feature. Light-medium grey silty clay. Medium compaction, occasional red sandstone and yellow sandstone. 0.05m deep, 0.43m thick and 6.10m extent. SF 022 - Bone and SF 023 - ceramic pipe.	141 is the light-medium grey fill of linear feature 140
142	P. Ph1	Cut of mine shaft. 4.6m long, 3.43m wide and -0.86m deep. Sub-circular. Steep sides 80' becoming gentle curve to the back. U-shaped base. Filled with 143.	Cut for possible shaft.
143	P. Ph1	Fill of mine shaft. Medium greyish brown silty clay. Firm compaction. 4.6m thick, 3.43m extent and 0.86m deep.	Fill of mine shaft 142.

Context No	Area	Description	Interpretation
144	P. Ph1	Fill of mine shaft. Medium yellow brown silty clay. Firm compaction, occasional shale.	Redeposited natural fill of mine shaft 153.
145	VOID	VOID	VOID
146	P. Ph1	Cut: Approx 3.32m long, not fully revealed approx 2.42m wide, machine depth 0.38m deep. Sub-circular. 70° angle, gradually sloping. Filled by 137.	146 is the cut of mine shaft.
147	P. Ph1	Cut: 12.2m long by 2m wide. E-W. Linear. Filled by 148.	One of a series of furrows associated with rig and furrow cultivation.
148	P. Ph1	Fill: Mid grey/brown clay. Moderate inclusions of small sub-angular and sub-rounded stones 80mm <> Moderate inclusions of small shale and coal fragments. Fills cut 147.	Fill of furrow cut 147.
149	P. Ph1	Cut: 11.9m long by 2.5m wide.	Rig and Furrow
150	P. Ph1	Fill: Same as 148. Contained a broken neck of a probble shaft and globe bottle circa 17th Century SF 020.	Rig and Furrow
151	P. Ph1	Cut of rig and furrow. 8.31m long, 3.28m wide and 0.13m deep. SE-NW. Linear/sub-linear. 40° slope. U-shaped base. Filled by 152.	151 is the cut of rig and furrow associated with cultivation activity on site.
152	P. Ph1	Fill: Medium/dark brown silty clay. Firm compaction, coal and sandstone inclusions. 0.13m deep, 3.28m thick and 8.31m extent.	152 is the fill of rig and furrow 151.
153	P. Ph1	Cut of mine shaft. 4.03m long by 3.77m wide. Sub-circular. Filled by 144, 154.	153 is cut for mine shaft.
154	P. Ph1	Fill: Medium to dark black silty clay. Firm compaction, frequent coal/shale and occasional sandstone. 3.77m thick and 4.03m extent.	154 is the fill of mine shaft cut 153
155	P. Ph1	Cut: 17.6m long by 2.4m wide.	Rig and Furrow
156	P. Ph1	Fill: Same as 148.	Rig and Furrow
157	P. Ph1	Cut of rig and furrow. 7.16m long by 1.6m wide. SE-NW. Sub-linear/linear. Filled by 158.	157 is the cut of rig and furrow
158	P. Ph1	Fill: Dark/medium brown silty clay. Firm compaction, coal and sandstone inclusions. 1.60m thick and 7.16m extent. SF 021 - Bone	158 is the fill of rig and furrow 157
159	P. Ph1	Cut of mine shaft. 2.82m long 2.91m wide. Sub-circular. Filled by 160.	159 is the cut of mine shaft.
160	P. Ph1	Fill of mine shaft. Medium to dark black silty clay. Firm compaction, frequent coal/shale and occasional yellow sandstone. 2.91m thick and 28.2m extent.	160 is the fill of mine shaft cut 159.
161	P. Ph1	Cut of square shaft. 1m long by 1m wide. Filled with 162.	161 is the cut of possible pit/quarry.
162	P. Ph1	Fill of square shaft. Medium-dark blackish grey, mixed with yellow clay, silty clay. Firm compaction, occasional shale and coal. 0.44m (as visible) deep, 1m thick, 1m extent.	162 is the fill of poss pit/quarry 161.
163	P. Ph1	Cut of mine shaft. 2.92m long and 2.29m wide. Sub-circular. Filled with 164.	163 is the cut of mine shaft.
164	P. Ph1	Fill of mine shaft. Medium/dark black silty clay. Firm compaction, frequent shale/coal, occasional sandstone and modern pottery. 2.29m thick and 2.92m extent.	164 is the fill of mine shaft 163.
165	P. Ph1	Cut of rectangular feature. 4.14m long by 0.49m wide. N-S orientation. Filled by 166.	165 is the cut of rectangular feature.
166	P. Ph1	Fill of linear feature. Dark/medium greyish black silty clay. Firm compaction, occasional coal/shale. 0.49m thick and 4.14m extent.	166 is the fill of rectangular feature 165.
167	P. Ph1	Cut of poss rig and furrow. 4.12m long by 0.84m wide. N-S. Amorpheus/linear. Filled by 168.	167 is the cut of poss rig and furrow.
168	P. Ph1	Fill of rig and furrow. Dark brown silty clay. Firm compaction, occasional sandstone. 0.84m thick and 4.12m extent.	168 is the fill of poss rig and furrow.
169	P. Ph1	Natural Deposit: Medium reddish brown silty clay.	Natural
170	P. Ph1	Pit Cut: 1.60m long, documented only 1.80m wide 0.60m deep. NW-SE. Rectangular (steep sides). Filled by 171 and 172.	Cut of rectangular pit, possible exploratory quarry pit

Context No	Area	Description	Interpretation
171	P. Ph1	Fill Deposit:Light grey/brown silty clay. Loose/friable. 0.30 deep.	Fill deposit of rectangular pit
172	P. Ph1	Fill Deposit:Light grey/brown with orange silty clay/clay. Firm. 0.30 deep.	Fill deposit of rectangular pit
173	P. Ph1	Cut of circular? Pit. 5.60 long by 2.00 wide, excavated 0.30 deep. N-S. Possibly circular. Steep base. Filled by 174.	Cut of possible circular pit.
174	P. Ph1	Fill Deposit:Mid grey/brown clay silt. Firm/coal inclusions. 0.30 + deep.	Fill deposit of possible circular pit.
175	P. Ph1	Fill: Brownish orange clay. >1.17m deep and 0.6m wide.	Redeposited material around edges of quarry pit 163.
176	P. Ph1	Cut of quarry. 2.10m wide at southern extent. N-S orientation along length of quarry. Filled by 177.	Cut of 19th Century limestone quarry. Same as 511
177	P. Ph1	Fill of quarry. Orangey brown at western extent leading to redeposited mottled orange and dark brown clay. Large sandstone inclusions irregular subangular fragments, discreet dump of blaze. Frogged fireclay and red brick stamped Neddrie occasional - asbestos cement burnt fragments.	Redeposited clay and sandstone rubble infilling limestone quarry 176.
178	P. Ph1	Cut: 2m length, 40cm breadth, 40cm + depth. Cut continues beyond limits of excavation. Orientated NW-SE along length, consistant with orientation of stone seams. Sub-rectangular, linear cut edges. Filled by 179.	Rectangular pit
179	P. Ph1	Fill: Mid browny grey colour - mottled in places, clay and sandy clay. 40cm + deep, Fill of cut 178.	Redeposited clayey fill of cut 178.
180	P. Ph1	Cut: 2m length, 40cm breadth. Orientated NW-SE along length. Rectangular, linear cut edges. Filled by 181.	Rectangular pit
181	P. Ph1	Fill: Mid browney clay and sandy clay. Fill of cut 180	Redeposited clay fill of 180.
182	P. Ph1	Cut: 392cm long by 428cm wide. Aligned NW-SE. Sub-circular. Filled by 183.	Possible pit/ quarry
183	P. Ph1	Fill: Mid brown sandy clay. Very small sandstone and coal inclusions. 5% + larger sub-angular pieces of redeposited sandstone from 2x2cm - 30x20cm. Fill of cut 182.	Fill of pit/quarry 182.
184	P. Ph1	Cut of pit. 374cm long, width at N end 103cm at S end 69cm. Max depth 16cm. N-S. Sub-rectangular. Gentle 45' slope at W edge, E edge is large vertical slope face. Undulating base over large natural rocks. Filled by 185	Probable backfill disturbance from evaluation trench
185	P. Ph1	Fill of pit. Mid-dark brown varies between sandy-clay and clay, random distributions. Inclusions of fragments sandstone, coal, larger sandstone pieces and ceramic tiling also found. Depth max 16cm. Contained some modern white ceramic, not retained. SF 032 - Pot, SF 033 - Ceramic Tile and SF 029, SF 030 and SF 031 - Glass	Probable backfill disturbance from evaluation trench
186	P. Ph1	Cut: 287cm long by 249cm wide. NW-SE. Sub-oval. Filled by 187 in N end and 188 in SE.	Sub-circular pit
187	P. Ph1	Fill: Yellowy - mid brown sand-clay and clay random distribution. Small sandstone inclusions.	Fill of pit 186 redeposited material,
188	P. Ph1	Fill: Greyish-brown to mi brown clayey-sand. Natural coal inclusions 10%. Max 11cm depth.	Discreet concentration of greyish brown fill to SE end of 186
189	P. Ph1	Cut: 19m long by 15m wide by 5.5m deep. NE-SW. Sub-circular. Sloping in towards centre of feature. Undetermined shape of base. Filled by 190.	Quarry scar or large quarry pit
190	P. Ph1	Fill: Mid brown silty clay. Charcoal, CBM and modern ceramic inclusions. SF 038 - Metal	Fill of quarry scar or large quarry pit
191	P. Ph3	Cut? Subsidence. 23.10m long, up to 7.9m wide. NE-SW. Amorphous linear. Filled by 192.	Quarry scar or large quarry pit
192	P. Ph3	Fill: Mid grey/brown sandy clay. Frequent small sandstone fragments, frequent coal and shale fragments and animal bone fragments not retained.	Fill of quarry scar or large quarry pit
193	P. Ph3	Cut: 15.9m long by 3.3m wide. E-W. Filled by 194.	Quarry scar or large quarry pit
194	P. Ph3	Fill: Mid grey/brown clay. Moderate inclusions of small sandstone fragments, moderate inclusions of shale and coal. Fills notional cut 193.	Fill of quarry scar or large quarry pit
195	P. Ph3	Cut: 3.3m long in diameter. Circular. Filled by 196.	Possible pit/ quarry

Context No	Area	Description	Interpretation
196	P. Ph3	Fill: Dark grey/brown clay. Moderate inclusions of medium and small sandstone fragments, frequent small fragments of shale and coal. Fills cut 195.	Fill of possible pit/ quarry
197	P. Ph1	Cut: 5.90m long by 4.1m wide. NW-SE. Oval. Filled by 198.	Possible pit/ quarry
198	P. Ph1	Fill: Mottled dark brown silty clay. Darker patches with shale/ coal around the edge. 4.1m wide by 5.9m long.	Fill of possible pit/ quarry
199	P. Ph3	Cut: 3.6m in diameter. Unexcavated. Circular. Filled by 200.	Possible pit/ quarry
200	P. Ph3	Fill: Grey/brown clay. Occasional small coal and shale fragments, occasional small sandstone fragments. Fill of cut 199.	Fill of possible pit/ quarry
201	P. Ph1	Cut: 5.4m long by 4.5m wide. NW-SE. Sub-circular. Filled by 202.	Possible pit/ quarry
202	P. Ph1	Fill: Mottled mid-dark brown silty clay. Coal inclusions. 5.4m long and 4.5m wide.	Fill of possible pit/ quarry
203	ADSH	Cut: 4.5m long by 0.5m wide. NW-SE. Rectangular. Filled with 204	Rectangular cut
204	ADSH	Fill: Firm, dark grey silty clay. 80% coal and shale fragments. Fills cut 203	Fill of rectangular cut 203
205	P. Ph3	Cut: 6.4m long by 5.75m wide. Circular.	Cut for possible mine shaft
206	P. Ph3	Fill: Greyish brown silty clay. Occasional sub rounded stone < 8cm. 5.75m by 6.40m unexcavated.	Possible mine shaft
206B	ADSH	Furrow Cut: 23.8m long by 2.1m wide. Linear.	Rig and Furrow
207	ADSH	Furrow Fill: Mid brown sandy clay. Minimal inclusions of small angular sandstone fragments, coal and shale fragments.	Fill of furrow cut 206
208	P. Ph3	Cut: 13.46m long by 0.94m wide, 0.04m deep. E-W. Linear. Gentle/no sides. Flat.	Linear, poss drainage, same as 105
209	P. Ph3	Fill: Black, coal dust/shale dust. 70-80% coal dust with clay. 13.46m long by 0.94m wide by 0.04m deep.	compact coal/shale dust fill
210	P. Ph3	Mineshaft Cut: 4.4m in diameter. Fill 211	Possible pit/ quarry
211	P. Ph3	Mineshaft Fill: Dark grey/brown clay. Moderate inclusions of brown mudstone fragments and frequent shale fragments.	Fill of possible pit/ quarry
212	P. Ph3	Mineshaft Cut: 3.7m long by 3.3m wide. Sub-circular	Possible pit/ quarry
213	P. Ph3	Fill: Dark grey/brown clay. Occasional small/medium sized angular sandstone inclusions, occasional small shale/coal inclusions.	Fill of possible pit/ quarry
214	P. Ph3	Cut: 3m long by 2.12m wide. Sub-oval. Fill 215.	Possible pit/ quarry
215	P. Ph3	Mineshaft Fill: Mid grey/brown clay. Occasional inclusions of sandstone fragments, moderate inclusions of shale and coal fragments.	Fill of possible pit/ quarry
216	VOID	VOID	VOID
217	VOID	VOID	VOID
218	P. Ph3	Cut: 10.1m long by 1.8m wide. NW terminus with rounded ends.	Linear/curvilinear cut with rounded ends.
219	P. Ph3	Fill: Mid grey/brown clay. Moderate inclusions of mid sized angular sandstone fragments, frequent small shale/coal fragments. fill cut 218	Unexcavated fill of linear/ curvilinear cut 218
220	P. Ph3	Mineshaft Cut: 2.8m long by 2.6m wide. Sub-circular. Fill 221	Possible pit/ quarry
221	P. Ph3	Shaft Fill: Mid grey/brown clay. Occasional sandstone fragments, moderate shale and coal fragments becoming very frequent along east side of Fill: Fills cut 220	Fill of possible pit/ quarry
222	VOID	VOID	VOID
223	VOID	VOID	VOID
224	P. Ph3	Cut: 2.45m long by 1.9m wide. Sub-circular. Fill 225	Possible pit/ quarry
225	P. Ph3	Fill Pale yellow brown clay with dark grey black shale/coal. Moderate inclusions of shale/coal. Fills cut 224	Fill of possible pit/ quarry
226	P. Ph3	Fill: Dark orange with red mottling clay. Occasional charcoal flecks on surface. Unexcavated, 0.42m long by 0.22m wide.	Small patch of heat affected natural, part of 224
227	P. Ph3	Cut: >24m long by >17.2m wide. N-S. Fill 228	Poss quarry scar

Context No	Area	Description	Interpretation
228	P. Ph3	Fill: Dark grey/brown clay. Moderate inclusions of sandstone fragments, coal and shale fragments, animal bone and occasional modern ceramic not retained.	Fill of 227
229	P. Ph3	Cut: 3m long by 2.8m wide. N-S. Sub-circular. Fill 230	Possible pit/ quarry
230	P. Ph3	Fill: Dark grey/brown clay. Moderate inclusions of small angular sandstone fragments, coal and shale fragments. Concentration of coal and shale around west and southern edges	Fill of possible pit/ quarry
231	P. Ph3	Cut: 1.20m long by 0.90m wide. N-S. rectangular. Fill 232	Rectangular pit
232	P. Ph3	Fill: Dark grey/brown clayey sand. Loose/firm with coal, small angular stones and clay. Superficial 1.20m long by 0.90m wide	Fill of 231
233	P. Ph3	Potential shaft, Cut: 1.1m in diameter. Sub-circular. Filled by 234.	Possible pit/ quarry
234	P. Ph3	Fill of potential shaft. Mid-grey/brown clay. Moderate inclusions of small angular sandstone fragments and occasional coal and shale fragments. Concentration of coal and marine shell towards centre of fill	Fill of possible pit/ quarry
235	P. Ph3	Mineshaft Cut: 3.4m long by 2.9m wide. NE-SW. Sub-oval. Filled by 236.	Possible pit/ quarry
236	P. Ph3	Mineshaft Fill: Mid orange/grey/brown clay with a circular orange curve towards centre of Fill: Occasional small sandstone fragments and moderate inclusions of coal and shale fragments.	Fill of possible pit/ quarry
237	P. Ph3	Cut: 1.15m long by 1.27m wide. Circular. Filled by 238.	Circular pit, possibly part of 235
238	P. Ph3	Fill: Dark greyish brown silty clay. Compact though friable with frequent sub-rounded stone up to 30m.	Fill of pit
239	P. Ph3	Mineshaft Cut: 3.6m in diameter. Circular.	Possible pit/ quarry
240	P. Ph3	Fill: Grey/brown clay. Moderate inclusions of small sandstone fragments and shale and coal fragments. Fills pit cut 239.	Fill of possible pit/ quarry
241	P. Ph3	Cut: 3.5m long and 2.2m wide. E-W. Sub-oval. Filled by 242.	Cut for poss mine shaft
242	P. Ph3	Fill: Greyish brown silty clay. Semi-frequent shale. 3.5m by 2.2m	Fill of poss mine shaft
243	P. Ph3	Slot trench, Cut: 2.5m long by 0.5-0.7m wide. N-S. Sub-rectangular. Filled by 244.	Sub-rectangular pit, possible test pit/ exploratory pit
244	P. Ph3	Fill: Mottled mid-orange/brown clay. Occasional small sandstone and mudstone fragments. Fills cut 243.	Fill of pit 243.
245	P. Ph3	Potential shaft, Cut: 2.1m long by 1.7m wide. N-S. Sub-circular. Filled by 246.	Possible pit/ quarry
246	P. Ph3	Possible mineshaft Fill: Dark grey brown with orange brown concentration towards centre of Fill: Sandy clay. Moderate inclusions of small angular sandstone fragments, coal and shale fragments. Occasional white glazed ceramic sherds and animal bone fragments not retained. Fills cut 245.	Fill of possible pit/ quarry
247	ADSH	Linear Cut: 45m long (continuation of 125). Up to 1.1m wide. 0.17m deep (max). NNE-SSW. Generally a shallow spread of coal but occasionally becoming deeper with sharp sloping sides that break abruptly to form an irregular base. Filled by 278.	Same as 125.
248	ADSH	Fill of linear Cut: Dark grey/black. Coal and shale inclusions. 0.17m deep (max).	Fill of 247
249	ADSH	Cut of poss small pit. 0.6m long by 0.5m wide by 0.20m deep. NW-SE. Oval. North side concave, south side concave. Filled by 250.	Small pit to immediate N of 247.
250	ADSH	Fill of possible pit. Mid-dark brown silty clay. Occasional gravel and modern ceramics (not recorded) clay and coal. 0.6m by 0.5m.	Fill of pit 249.
251	ADSH	Furrow Cut: 8.4m long by 2.1m wide. E-W. Linear. Filled by 252.	Rrig and furrow cultivation marks.
252	ADSH	Fill of furrow. Mid grey/brown sandy clay. Moderate inclusions of small angular sandstone fragments, shale and coal fragments.	Fill of furrow cut 251.

Context No	Area	Description	Interpretation
253	ADSH	Furrow Cut: 19.3m long by 2.2m wide. E-W. Linear. Filled by 254.	Rrig and furrow cultivation marks.
254	ADSH	Furrow Fill: Mid grey/brown sandy clay. Moderate inclusions of coal and shale fragments and small angular sandstone fragments. Occasional sherds of blue and white transfer applied decorated pottery. Fills cut 253.	Fill of furrow cut 253.
255	ADSH	Cut: 4.26m long by 3.36m wide. NW-SE. Sub-circular. Filled by 256.	Possible pit/ quarry
256	ADSH	Fill: Greyish black silty clay. Fill is predominantly shale/coal 60-70%. 4.26m by 3.36m.	Fill of possible pit/ quarry
257	ADSH	Cut: 3.04m long by 2.83m wide. NW-SE. Sub-circular shaped. Filled by 258.	Possible pit/ quarry
258	ADSH	Fill: Greyish black silty clay. Large amounts 50-60% shale/coal with occasional sandstone. 3.04m by 2.83m.	Fill of possible pit/ quarry
259	VOID	VOID	VOID
260	VOID	VOID	VOID
261	VOID	VOID	VOID
262	VOID	VOID	VOID
263	VOID	VOID	VOID
264	P. Ph3	Linear bent feature fill (Drain). Mid grey/brown silty sand/ clay. Loose, inclusions of medium, small stones, bricks, clay and modern pottery. 0.25-0.55 thick, 0.40 depth.	Fill of modern drainage feature
265	P. Ph3	Cut of linear/bent angle pipe drain. 10m long by 0.25-0.35m wide by 0.40m deep. N-S. Linear/curvilinear with bent angle. Filled with 264.	Modern drainage feature
266	P. Ph3	Fill of fireclay pipe drain. Grey/dark grey silty sand.	Fill of modern drainage feature
267	P. Ph3	Cut of fireclay drain. 8.70m long excavated by 0.40m wide. N-S. Linear. Filled by 266.	Modern drainage feature
268	P. Ph3	Inspection chamber, structure. 2.20m long by 1.40m wide by 0.20/0.10m tall. E-W. Drystone and mortar. Square/ rectangular.	Modern drainage feature
269	P. Ph3	Cut of inspection chamber 268. 2.20m long by 1.40m wide. E-W. Rectangular/square. Filled with 268.	Modern drainage feature
270	P. Ph3	Deposit: Pale brown lime mortar. Frequent inclusions of small sandstone fragments, tile fragments and occasional spreads of coal dross. 0.12m deep, 12.8m long and 8.8m wide.	Modern waste spread
271	P. Ph3	Fill: Mid brown with darker patches on top 20cm. Silty clay. Sub-angular-angular stone 20% up to 14cm. 51cm deep by 1.5m wide by approx 30m long.	Fill of ditch
272	P. Ph3	Cut: 30m long approx by 1.5m wide by 0.51m deep. NW-SE. Linear. Steep east side and moderate to steep west. Concaved. Filled by 271.	Ditch running NW-SE. Possible boundary ditch
273	P. Ph3	Fill: Mid brown silty clay. Degraded orange rock. 33cm deep, 1.27x2.18m.	Fill of possible small pit 274
274	P. Ph3	Cut: 2.18m long by 1.27m wide by 0.33m deep. NW-SE. Sub-oval. Gentle to moderate along E edge and sharp along west. Flat base/sloping to W. Filled by 273.	Possible small pit
275	VOID	VOID	VOID
276	VOID	VOID	VOID
277	P. Ph3	Fill: Mid-dark brown silty clay. Large quantity of ash in top 5cm. 0.83m long by 0.78m wide by 0.13cm deep.	Ashy upper fill of 299.
278	P. Ph3	Fill: 60-74cm long by 45-50cm wide by 20-15cm tall. N-S. Possible limestone. Sub-rounded 13cm approx stones with sub-angular faced stone 40cm.	Stones within 299
279	P. Ph3	Fill: Mid brown silty clay. Limestone and occasional coal fragments. 2.3x2.7m.	Fill of possible pit/ quarry
280	P. Ph3	Cut: 2.7m long by 2.3m wide. Circular. Filled by 279.	Possible pit/ quarry
281	P. Ph3	Fill: Mid-dark brown sandy/silty clay. Sub-angular stone <5%, occasional charcoal. 1.7x1.4m.	Fill of possible pit/ quarry
282	P. Ph3	Cut: 1.7m long by 1.4m wide. W-SE. Sub-circular. Filled by 281.	Possible pit/ quarry

Context No	Area	Description	Interpretation
283	P. Ph3	Fill: Greyish brown slightly silty clay. Occasional sub-rounded sandstone. 0.95x1.17m.	Fill of possible pit/ quarry
284	P. Ph3	Cut: 1.17m long by 0.95m wide. Sub-circular/irregular. Filled by 283.	Possible pit/ quarry
285	P. Ph3	Fill: Greyish black with greyish orange to the south. Occasional sub-angular sandstone. 1.2mx3.6m, 0.10m thick.	Ash dump
286	P. Ph3	Cut: 3.6m long by 1.2m wide. NW-SE. Sub-rectangular. Filled by 285.	Rectangular pit - possible waste pit
287	P. Ph3	Fill: Mid/light brown silty clay. Sub-angular sand/lime stone. 2.6x1.6m, 0.66m deep.	Ashy patch along S edge
288	P. Ph3	Cut: 2.6m long by 1.6m wide by 0.66m deep. NW-SE. Linear. Filled by 287.	Rectangular pit - possible waste pit
289	P. Ph3	Fill: Greyish brown silty clay. Sub-angular limestone. 2.2x1.7m.	Fill of possible pit/ quarry
290	P. Ph3	Cut: 2.2m long by 1.7m wide. Sub-circular. Filled by 289.	Possible pit/ quarry
291	P. Ph3	Fill: Mid-light greyish brown silty clay. Loose soil with 40% sub-angular-angular limestone. 7.92x1.72m.	Possible natural outcrop of limestone
292	P. Ph3	Cut: 7.92m long by 1.72m wide. Tested to 0.38m deep. E-W. Irregular linear. Filled by 291.	Possible natural outcrop of limestone
293	VOID	VOID	VOID
294	VOID	VOID	VOID
295	VOID	VOID	VOID
296	VOID	VOID	VOID
297	VOID	VOID	VOID
298	VOID	VOID	VOID
299	P. Ph3	Cut: >1.28m long by 1.48m wide by 0.38m deep. E-W. Oval. Steep sided sharp cut at top and bottom. Undulating base.	Cut for rectangular feature
300	P. Ph3	Fill: Mottled orange, yellow, grey, brown and black silty clay. Burnt clay inclusions. 1.28x1.48m and 0.25m deep.	Heat effected natural redeposited
301	VOID	VOID	VOID
302	VOID	VOID	VOID
303	VOID	VOID	VOID
304	VOID	VOID	VOID
305	VOID	VOID	VOID
306	P. Ph3	Fill: Blackish brown silty gravel. Loose. 1.55x0.86m and 0.34m deep.	Fill of modern dumping pit
307	P. Ph3	Deposit: Medium/dark brown sandy clay. Firm/occasional sub-angular/angular flecks/pebbles. Slot approx 0.30m thick, 0.7-1.00m long by 0.50m width.	fill cut 286.
500		Cut: Sub-oval in plan oriented E-W, measuring 2.31m long by 0.97m wide.	Cut of possible waste pit
501		Fill: Firm, greyish brown silty clay with occasional small round stones. Contained oyster shells.	Fill of pit 500.
502		Cut: Sub-oval in plan, oriented N-S, measuring 3.10m long by 1.75m wide.	Cut of pit filled by 502
503		Fill: Firm, mid black grey clayish silt with frequent large and small stones throughout. Contained glass.	Fill of pit 502
504		Same as 176	Same as 176
505		Cut: Sub-oval in plan, oriented E-W with steep sides and a flattish base, measuring 2.25m long by 1.16m wide, and 0.63m deep.	Cut of pit filled by 506 and 515
506		Fill: Friable, light yellow green clayish sand with occasional small sub-rounded stones. Measuring 1.6m long by 1.15m wide and 0.42m deep.	Lower fill of pit 505
507		Cut: Sub-oval in plan, oriented E-W with steep sides and an uneven base, measuring 1.3m long by 0.87m wide and 0.22m deep.	Cut of pit filled by 508
508		Fill: Friable, light black grey sandy silt with occasional small stones.	Fill of pit 507

Context No	Area	Description	Interpretation
509		Cut: Sub-rectangular in plan, oriented N-S, measuring 1.0m long by 0.6m wide.	Cut of pit filled by 509
510		Fill: Friable, light black grey sandy silt with occasional small stones.	Fill of pit 509
511		Cut: Huge quarry pit running North-East to South West as seen on old maps.	Cut of quarry. Same as 176
512		Fill: Mixed fill containing a wide range of rubbish material.	Fill of quarry 511
513		Cut: not fully exposed measuring 17m long by 5.5m wide.	Possibly part of quarry scar 176
514		Fill: Firm, mid grey brown silty clay with moderate coal inclusions throughout. It contained brick, glass, shell, and modern pottery.	Fill of 513
515		Fill: Friable, light grey brown silty sand with occasional small stones and frequent charcoal, measuring 2.15m long by 1.15m wide and 0.63m deep.	Upper fill of pit 505
516		Cut: Linear in plan, running NNE-SSW, 128.80m + long by 0.94m wide and 0.43m deep. Steep sides with a concave base.	Cut of poss field boundary ditch filled by 517
517		Fill: Compact, mid brown grey silty clay with occasional small sub-angular stones. Contained a small piece of pottery and glass SF 101	Fill of ditch 516
518	VOID	VOID	VOID
519	VOID	VOID	VOID
520		Cut: Sub-oval in plan, measuring 0.78 by 0.43m and 0.11m deep, with steep sides and a concave base.	Cut of pit filled by 521
521		Fill: Firm, dark grey brown silty clay with occasional small sub-angular stones.	Fill of pit 520
522		Cut: Sub-circular in plan, 0.44m long by 0.28m wide and 0.20m deep with steep sides and a concave base.	Cut of possible posthole filled by 523
523		Fill: Firm, dark grey brown silty clay with small sub-angular gravel.	Fill of possible posthole 522
524		Cut: Sub-circular in plan, 1.08m long by 0.88m wide and 0.16m deep. Moderate sloping sides and a concave base.	Cut of pit filled by 525
525		Fill: Friable, mid grey brown sandy silt with occasional small sub-angular gravel. SF 102 - Pot	Fill of pit 524
526		Cut: Oval in plan, 0.67m long by 0.46m wide and 0.09m deep, with moderate sloping sides and a shallow concave base.	Cut of pit filled by 527
527		Fill: Friable, dark grey brown sandy silt with occasional small sub-angular stones.	Fill of pit 526
528		Cut: Circular in plan, 1.85 by 1.72m and 0.55m deep, with steep sloping sides and an uneven concave base.	Cut of pit filled by 429
529		Fill: Friable, mid brown grey sandy silt with occasional small sub-angular stones. SF 103 - Pot and Bone	Fill of pit 528
530		Cut: Sub-circular in plan, measuring 11.6m by 8.7m	Possible pit/ quarry
531		Fill: Firm, mid grey brown sandy clay.	Fill of possible pit/ quarry
532		Cut: Rectangular in plan, measuring >2.6m long by 1.5m wide.	Cut of pit on edge of quarry scar 176
533		Fill: Firm, dark grey brown sandy silt with occasional small sub-angular stones and gravel.	Fill of pit 532
534		Cut: Oval in plan, 7.8m long by 5.0m wide.	Cut of pit filled by 535
535		Fill: Firm, mid brown grey silty clay with occasional small sub-angular stones and gravel, and occasional small flecks of coal.	Fill of pit 534
536		Cut: Sub-oval in plan, measuring 2.15m long by 1.44m wide and 0.55m deep, with steep sides and a flattish base.	Cut of pit filled by 537, 538 and 539
537		Fill: Compact, dark brown grey clayish silt with occasional small sub-angular and sub-rounded gravel and charcoal flecks, 0.35m thick. SF 104 - Pot, Glass and Shell	Fill of pit 536
538		Fill: Compact, light brown orange clayish sand with occasional small sub-rounded gravel, measuring 0.63 by 0.31m and 0.21m thick.	Fill of pit 536
539		Fill: Friable, dark brown grey silty sand with occasional small subrounded stones, 0.20m thick.	Fill of pit 536

Appendix B: List of Drawings

Drawing No	Area	Sheet No	Subject
1		SH 1	NW-facing section of slot through linear feature
2		SH 1	SSE-facing section of slot through linear feature
3	P.Ph1	SH P1, P2, P3, P4	Site Plan
4		SH 1	NE-facing section of slot through linear feature
5		SH 2	South face and SSE face section of pit 003/019 1/4 section
6		SH 1	Section through wear feature 009 and feature 012
7		SH1	SE-facing section of linear feature 009/012
8		SH1	NW-facing section of pit 304
9		SH1	W face section of pit 017
10		SH3	N+W face section of 1/4 section pit 005 and 023
11		SH3	SSW-facing section of pit
12		SH3	S-facing section of posthole
13		SH3	E-facing section of posthole
14		SH3	1/4 section of quarry pit 028, 029
15		SH3	S-facing section of pit
16		SH3	SW/SE facing section of quarry pit
17		SH4	N-facing section of trench 2
18	P.Ph1	5	SW-facing section of curve linear feature
19	P.Ph	5	NW-facing section of post hole
20	P.Ph	5	W-facing section of rect. Pit
21	P.Ph	5	NW-section of linear feature
22	P.Ph	5	Floating plan of linear feature
23	P.Ph1	5	NW-facing section of poss. Pit
24	P.Ph1	5	E-facing section of linear feature
25	P.Ph1	5	W-facing section of linear feature
26	P.Ph1	5	Floating plan of poss. Pit 068
27	P.Ph1	5	Floating plan of linear feature 063
28	P.Ph1	6	SW facing section of machine excavated trench 073 and 074
29	P.Ph1	6	Plan of machine excavated trench 073 and 074
30	P.Ph1	5	SE facing section of feature 070 slot A
31	P.Ph1	5	SE facing section of feature 070 slot C
32	P.Ph1	5	NE facing section of slot B through 070
33	P.Ph1	5	SW-facing section of charcoal spread and slot trench, slot D
34	P.Ph1	7	SE-facing section of slot E
35	P.Ph1	7	E-facing section of slot F
36	P.Ph1	7	SW-facing section of slot G
37	P.Ph1	7	NW-facing section of slot H
38	P.Ph1	7	NW-facing section of slot I
39	P.Ph1	7	Linear cut 096 south and west facing sections south terminus
40	P.Ph1	7	S-facing section of 106 in slot trench
41	P.Ph1	8	S-facing section of mine shaft 104 in slot trench
42	P.Ph1	9	Section of 094, 107 in slot trench
43	P.Ph1	7	S+W-facing sections of slot A through 096
44	P.Ph1	9	N facing section of slot B through 096
45	P.Ph1	7	N-facing section of slot C through 096
46	P.Ph1	9	Section of slot D through 096
47	P.Ph1	9	W-facing section of 135
48	P.Ph1	7	SE facing section through pit 113
49	P.Ph1	9	S-facing section of natural pit 122
50	P.Ph1	7	E+S facing sections of SE quadrant pit cut 087
51	P.Ph1	9	SW facing section of slot through 119
52	P.Ph1	9	E+N facing sections in slot A through 125

Drawing No	Area	Sheet No	Subject
53	P.Ph1	9	W-facing section of 115
54	P.Ph1	9	S-facing section of slot B through 125
55	P.Ph1	9	N-facing section of slot B through 125
56	P.Ph1	7	NW-facing section of slot C through 125 and 127
57	P.Ph1	10	SW facing section of slot trench through 112
58	P.Ph1	10	NW-facing section of slot through 146
59	P.Ph1	10	SW facing section of slot through 089
60	P.Ph1	10	SW facing section through 127
61	P.Ph1	10	NW facing section through rig and furrow 151
62	P.Ph1	10	NW-facing section of 146
63	P.Ph1	10	S-facing section of poss. Air shaft 161
64	P.Ph1	11	SW facing section of poss. Mine shaft 153
65	P.Ph1	12	NW-facing section of poss. Mine shaft 153
66	P.Ph1	12	W-facing section A of 170, 173 and 174
67	P.Ph1	12	W-facing section B of 173 and 174
68	P.Ph1	13	SE-facing section of possible mine shaft 142
69	P.Ph1	11	SE-facing section of slot feature
70	P.Ph1	10	S-facing section of 184
71	P.Ph1	10	Potential mine shaft NE facing section
72	ADSH	10	S-facing section linear cut 247
73	Ph 1	10	E facing section of linear cut 209
74	ADSH	13	S facing section of mine shaft 063
75	ADSH	13	SE facing section of slot through 106
76	Ph3	13	E facing section of p/h 249
77	Ph3	13	NW facing section of ditch 272
78	Ph3	13	NW facing section of ind. Deposit 299
79	Ph3	13	NW facing section of pit 274
80	Ph3	13	N facing section of pits 288 and 305
81	Ph3	13	SE facing section SE pit 286
501		14	Section of pit 520
502		14	Plan of pit 520
503		14	Section of pit 522
504		14	Plan of pit 522
505		14	Section of pit 524
506		14	Plan of pit 524
507		14	Section of pit 528
508		14	Plan of pit 526
509		14	Section of pit 526
510		14	Plan of pit ?
511		14	Section of ditch 516
512		14	Plan of ditch 516
513		14	Plan of pit 534
514		14	Plan of pit 530

Appendix C: List of Finds

Find No	Area	Context No	No of Pieces	Material	Type	Description
001	P.Ph1	018	2	Brick		Red bricks
002	P.Ph1	032	1	Ceramic	Pottery	Modern pot
003	P.Ph1	084	1	Ceramic	Pottery	Modern ceramic sherd
004	P.Ph1	097	1	Ceramic	Pottery	Base sherd of white gritty ware
005	P.Ph1	001	1	Bone	Tooth	Cow's tooth
006	P.Ph1	001	1	Glass	Glass	1 Sherd of bottle glass
007	P.Ph1	001	1	Ceramic	Pottery	1 sherd modern ceramic

Find No	Area	Context No	No of Pieces	Material	Type	Description
008	P.Ph1	001	1	Ceramic	Pottery	1 sherd modern ceramic
009	P.Ph1	001	1	Ceramic	Pottery	1 sherd modern ceramic
010	P.Ph1	001	1	Ceramic	Pottery	1 sherd modern ceramic
011	P.Ph1	001	2	Ceramic	Pottery	2 fragments modern ceramic
012	P.Ph1	097	3	Bone	Animal?	Burnt bone
013	P.Ph1	110	1	Ceramic	Pottery	1 Scottish white gritty ware sherd
014	P.Ph1	110	2	Bone	Animal?	2 burnt bone
015	P.Ph1	136	2	Bone	Animal?	2 pieces of burnt bone
016	P.Ph1	116	1	Ceramic	Clay pipe	Clay pipe fragment
017	P.Ph1	116	1	Glass	Glass	Small sherd of clear glass
018	Ph 1	126	3	Ceramic	Tile	3 pieces of red tile
019	Ph 1	126	1	Ceramic	Pottery	1 sherd of modern pot
020	Ph 1	150	4	Glass	Bottle	4 pieces of poss. Shaft and globe bottle
021	Ph 1	158	7	Bone	Animal?	7 pieces of bone
022	Ph 1	141	1	Bone	Animal?	1 piece of bone
023	Ph 1	141	1	Ceramic	Pipe	1 piece of ceramic pipe
024	Ph 1	164	1	Ceramic	Pottery	1 piece of ceramic
025	Ph 1	Unstrat	1	Metal	Gold	1 1863 (half) sovereign
026	Ph 1	179	2	Ceramic	Pottery	2 piece ceramic glazed
027	Ph 3	001 Unstrat	1	Ceramic	Pipe	1 piece of ceramic pipe
028	Ph 1	187	1	Metal	Button	1 metal button
029	Ph 1	185	1	Glass	Bottle	1 base of stamped york glass co bottle
030	Ph 1	185	2	Glass	Window	2 sherds of window glass
031	Ph 1	185	1	Glass	Bottle	1 neck of glass bottle
032	Ph 1	185	5	Ceramic	Pottery	5 piece mixed pottery
033	Ph 1	185	3	Ceramic	Tile	3 piece tile (roof)
034	Ph 1	187	1	Bone	Animal?	1 piece animal bone
035	Ph 1	187	2	Ceramic	Pottery	2 piece mixed ceramic
036	Ph 1	188	2	Glass	Sherds	2 piece glass sherds
037	Ph 1	188	1	Ceramic	Tile	1 Ceramic tile
038	Ph 1	190	1	Metal	Brass	Brass button
039	Ph 1	001	1	Glass	Jewel	Cut glass diamond
040	Ph 1	190	4	Ceramic	Brick	Handmade brick fragments
101		517	1	Glass	Rim piece	Thick, green rim piece of glass
102		525	2	Pottery	Blue and white china	Blue and white piece of china pottery
103		529	3	Pottery and Bone	White china	White china pottery and 2 small bones
104		537	8	Pottery/ Glass/Shell	Modern	Glazed pottery, glass piece and a small shell

Appendix D: List of Samples

Sample No	Area	Context No	Size	Reason for Sampling				Application/Comments
				Pot	Bone	Lithics	Botanics	
001	P. Ph1	018	1 L					Brick fragments, sample of fill 018 of pit 017
002	P. Ph1	019	1 L					Sample of fill 019 of large pit 003
003	P. Ph1	004	1 L					Sample of fill 004 of pit
004	Ph 1	097	1 L	Y				CV, fill of linear cut 096
005	Ph 1	110	1 L	Y				White gritty ware, CV, fill of mine shaft
006	Ph 1	152	1 L					CV, sample of 152 in cut 151
007	Ph 1	154	1 L					CV, sample of 154 from poss. Mine shaft 153
008	Ph 3	277	1 L					CV, ash spread
500		517	2L					Fill of ditch. Glass found.
501		537	10L	Yes				Fill of pit 536. Pottery, glass and shell found.
502		538	2L					Redeposited natural in pit 536

Appendix E: List of Digital Images

4914		Film No. 1a	Lang Loan	Camera
Frame	Area	Context No.	Subject	Taken from
1			ID shot	
2			Pre-ex from edge of site	NE
3			Pre-ex from edge of site	SE
4			Pre-ex	E
5			Pre-ex	SE
6			Pre-ex	W
7			Pre-ex of roadway	NE
8			Pre-ex	W
9			Pre-ex showing grouting	SE
10			Pre-ex showing compound	W
11			Pre-ex showing depression dug into soil	NE
12			Pre-ex wheel ruts	E
13			End of day 1 strip	SE
14		003	Pre-ex of quarry pit 003	W
15		003	Pre-ex of quarry pit 003	E
16			Pre-ex of gully	NE
17			Pre-ex of pit	S
18		005	Pre-ex of quarry pit 005	N
19			Pre-ex of pit	N
20			Pre-ex of gravel pit	E
21		008	Pre-ex of pit 008	S
22			Area of site entrance	NE
23		009	Pre-ex linear 009	SWW
24		010	Pre-ex of gully 010	SW
25		011	Pre-ex of gully 011	SW
26			Edge of road/no arch	SW
27			Empty area, SE	NE
28			Small area for pipes centre?	NW
29			Ruined topsoil removed	NE
30			Pre-ex quarry pit	SE
31			Pre-ex large quarry pit	SEE
32			Pre-ex linear	SE
33			Pre-ex linear	NW
34			Pre-ex linear	NW
35			Pre-ex linear	NE
36			Pre-ex linear	SW
37			Pre-ex linear	SW
38			Sewage trench showing quarry work	SE
39			Sewage trench showing old trench	SE
40			Sewage trench clay area	SE
41			Sewage trench quarry pits	SE
42			Sewage trench linear	SE
43			Sewage trench overview	NW
44			Area stripped with no arch	NE
45			Area stripped with no arch	SE
46			Area stripped with no arch	SW
47			Area stripped, archaeology in background	NE
4914	SH#1	Film No. 1b	Lang Loan	Camera
1	-	-	ID shot	-
2	-	-	NE view of stripped area	NW
3	-	-	SE view of stripped area	NNW
4	-	-	N/NE view of stripped area	WNW

Frame	Area	Context No.	Subject	Taken from
5	-	-	Poss archaeological round feature	SSW
6	-	-	poss archaeological round feature/ditch	S
7	-	-	Poss archaeological round feature	S
8	-	-	Poss archaeological round feature	E
9	-	-	Central NW view stripped area	SSE
10	-	-	General view of stripped area	SE
11	-	-	General view of stripped area	SE
12	-	-	General view of stripped area	SE
13	-	-	Shot of poss feature	NW
14	-	-	Pre-ex shot of large circular feature	SE
15	-	-	Pre-ex shot of large circular feature	SE
16	-	-	Pre-ex shot of line of 3 circular features	SW
17	-	-	Pre-ex shot of poss circular feature	E
18	-	-	Shot of poss rectangular feature in eval trench	S
19	-	-	Shot of large band of stone	S
20	-	-	Pre-ex of poss feature	E
21	-	-	Pre-ex of poss feature	E
22	-	-	Pre-ex of 3 linears	W
23	-	-	Shot of thin band of stone	W
24	-	-	Pre-ex shot of poss pit	SW
25	-	-	Pre-ex shot of poss pit	SW
26	-	-	Pre-ex of poss feature	SW
27	-	-	Shot of poss feature	SW
28	-	-	Shot of 2 poss pits	SW
29	-	-	Shot of intersecting linears - field drains?	S
30	-	-	Shot of poss large pit	SW
31	-	-	Gen shots of stripped area incl. dark spread	S
32	-	-	Gen shots of stripped area incl. dark spread	E
33	-	-	Gen shots of stripped area incl. dark spread	W
34	-	-	Poss linear feature	W
35	-	-	Dark patch containing trench edge	W
36	-	-	Shots of stripped area	W
37	-	-	Shots of stripped area	S
38	-	-	Dark intermixed layer, clayey silt and sandstone	S
39	-	-	Dark intermixed layer, clayey silt and sandstone	SW
40	-	-	Dark intermixed layer next to dark band, quarry?	S
41	-	-	Dark intermixed layer next to dark band, quarry?	S
42	-	-	Detail of band of dark material - quarry related?	W
43	-	-	Detail of band of dark material - quarry related?	S
44	-	-	General shot of stripped area	N
4914	DSLR	Film No. 1	Lang Loan	Camera
1	-	-	ID shot	-
2	-	(011)[014]	Pre-ex linear feature	SSE
3	-	(010)[013]	Pre-ex linear feature	SSE
4	-	(010)[013]	Pre-ex linear feature	SSE
5	-	(010)[013]	Pre-ex linear feature	SSE
6	-	(011)[014]	SE facing section of slot, linear feature	SE
7	-	(012)[015]	NE facing section of slot, linear feature	NE
8	-	(012)[015]	NE facing section of slot, linear feature	NE
9	-	[012][009]	Relationship between features	SW
10	-	003	Pre-ex shot of 003	SE
11	-	003	Pre-ex shot of 003	SE
12	-	003	During exc of large pit	S
13	-	003	During exc of large pit	SSE
14	-	003/019	S.facing section of quarry pit	S

Frame	Area	Context No.	Subject	Taken from
15	-	003/019	SSE. Facing section of quarry pit	SSE
16	-	(004)[021]	Gen shot of rectangular pit	NE
17	-	(004)[021]	NW facing section of pit	NW
18	-	(009)[022]	SE. facing section of rig and furrow	SE
19	-	[017](018)	W.facing section of pit with board	W
20	-	[017](018)	W.facing section of pit with board	W
21	-	(025)[005]	Pre-ex shot of poss pit	N
22	-	[024](025)	Pre-ex shot of poss quarry pit	N
23	-	[026](027)	Pre-ex shot of poss quarry pit	N
24	-	[028](029)	Pre-ex shot of poss quarry pit	N
25	-	024-029	Gen view of pits	N
26	-	[006](030)	Gen view of pit truncated by trench	N
27	-	-	Slot exposing field drain	SE
28	-	-	Gen shot of field drain	N
4914	DSLR	Film No. 2	Lang Loan	Camera
1	-	-	ID shot	-
2	-	[026](027)	Gen shot of poss pit	S
3	-	[026](027)	Gen shot of poss pit	S
4	-	[026](027)	SSW facing section of pit	SSW
5	-	[005](023)	E. facing section	N
6	-	[005](023)	N. facing section	N
7	-	(008)[007]	Gen shot of quarry pit	WNW
8	P.PH1	009 021	Shots of site from spoil heap	N
9	P.PH1	009 021	Shots of site from spoil heap	N
10	P.PH1	009 021	Shots of site from spoil heap	N
11	P.PH1	(004)[021]	Machine slot through pit 021	NW
12	P.PH1	[031](032)	pre-ex shot of rectangular pit	W
13	P.PH1	[031](032)	pre-ex shot of rectangular pit	W
14	P.PH1	33,034,035,036	pre-ex shot of 2 postholes	S
15	P.PH1	33,034,035,036	Gen shot of postholes during exc	S
16	P.PH1	33,034	S. facing section of postholes	S
17	P.PH1	35,036	E. facing section of postholes	E
18	P.PH1	[028](029)	NW. facing section of pit	NW
19	P.PH1	[028](029)	SW. facing section of pit	SW
20	P.PH1	[031](032)	S. facing section of pit	S
21	P.PH1	[031](032)	Gen shot of pit	S
22	P.PH1	[031](032)	Gen shot of pit	S
23	P.PH1	[037](038)	Gen shot of quarry pit	N
24	P.PH1	[037](038)	Gen shot of quarry pit	N
25	P.PH1	[039](040)	SE. facing section of pit	SE
26	P.PH1	[039](040)	SW. facing section of pit	SW
27	P.PH1	-	Trench 2 gen shot	SE
28	P.PH1	-	N. facing section of Tr.2	N
29	P.PH1	-	N. facing section of Tr.2 middle	N
30	P.PH1	-	N. facing section of Tr.2 middle	N
31	P.PH1	-	N. facing section of Tr.2 E. side	N
32	P.PH1	-	Drain pipe slot	NNW
33	P.PH1	-	Drain pipe slot	NNW
4914	DSLR	Film No. 3	Lang Loan	Camera
1	-	-	ID shot	-
2	P.PH.1	[57](58)	Shot during exc showing curvilinear feature	SW
3	P.PH.1	[57](58)	SW. facing shot of curvilinear feature	SW
4	P.PH.1	[59](60)	Half section of posthole	NNE
5	P.PH.1	[59](60)	NW. facing section of posthole	NW
6	P.PH.1	[59](60)	NW. facing section of posthole	NW

Frame	Area	Context No.	Subject	Taken from
7	P.PH.1	(064)[063]	Gen shot of linear feature	NE
8	P.PH.1	(064)[063]	E. facing section of terminus slot through feature	E
9	P.PH.1	(064)[063]	W. facing section of terminus slot through feature	W
10	P.PH.1	[065](060)	Pre-ex shot of linear feature	E
11	P.PH.1	[065](060)	Pre-ex shot of linear feature	E
12	P.PH.1	[065](060)	Pre-ex shot of linear feature	E
13	P.PH.1	[061](062)	W. facing section of pit	W
14	P.PH.1	[061](062)	N. facing section of pit	N
15	P.PH.1	[061](062)	S. facing section of pit	S
16	P.PH.1	[061](062)	E. facing section of pit	E
17	P.PH.1	[061](062)	E. facing section of pit	E
18	P.PH.1	(060)[059]	Relation/gen shot b/w p.h.and rec	NNE
19	P.PH.1	[065](066)	NW. facing section of linear feature	NW
20	P.PH.1	[068](067)	Gen plan view of pit like feature	NW
21	P.PH.1	[068](067)	W. facing shot of pit like feature	NW
22	P.PH.1	[074](073)	Plan view of exc mine-shaft	S
23	P.PH.1	[074](073)	Plan view of exc mine-shaft	S
24	P.PH.1	[074](073)	Section shot NNE of mine-shaft	SW
25	P.PH.1	[074](073)	Section shot NNE of mine-shaft	SW
26	P.PH.1	[074](073)	Gen shot of mine-shaft trench	S
27	P.PH.1	[074](073)	Gen shot of mine-shaft trench	S
28	P.PH.1	[074](073)	Gen shot of mine-shaft oblique	S
29	P.PH.1	[074](073)	Gen shot of mine-shaft oblique	S
30	P.PH.1	[074,088](073,079)	Gen working shots	N
31	P.PH.1	[074,088](073,079)	Gen working shots	N
32	P.PH.1	[080](079)	Plan shot of pit feature	SE
33	P.PH.1	[080](079)	Plan shot of pit feature	SE
34	P.PH.1	[080](079)	Plan shot of pit feature	E
35	P.PH.1	[080](079)	Plan shot of pit feature, oblique	W
36	P.PH.1	(069)[070]	Gen view of amorphous 'L' shaped feature	SW
37	P.PH.1	(069)[070]	Gen view of amorphous 'L' shaped feature	SW
4914	DSLR	Film No. 4	Lang Loan	Camera
1	-	-	ID shot	-
2	PH.1	(079,077)[078,080]	Gen shot of airshaft[080]and surrounding features	NW
3	PH.1	(079,077)[078,080]	Gen working shots	NW
4	PH.1	(079,077)[078,080]	Gen working shots	NW
5	PH.1	[070](069)	Plan view of slot'A' at S. end of feature [070]	NW
6	PH.1	[070](069)	SE. facing section of slot'A'.	NW
7	PH.1	[070](069)	Plan view of slot'C' at N. end of feature	NNW
8	PH.1	[070](069)	SE. facing section of slot'C'.	NNW
9	PH.1	(073)[074]	General working shots around top of mine-shaft	-
10	PH.1	(073)[074]SW	General working shots around top of mine-shaft	-
11	PH.1	-	General working shots around top of mine-shaft	-
12	PH.1	-	General working shots around top of mine-shaft	-
13	PH.1	070/069	Post-ex shot of slot through 070	NE
14	PH.1	070/069	Detail view of NE facing section slot 'B'	NE
15	PH.1	070/069	Post-ex shot of slot'B' through 070	SW
16	PH.1	081/082	Post_ex shot of slot'D'	NE
17	PH.1	081/082	Post_ex shot of slot'D'	SW
18	PH.1	071/072	L-shaped linear cut	S
19	PH.1	079-80,077-78	General view of features	W
20	PH.1	077/078	Post-ex shot of slot'E' through coal deposit	S
21	PH.1	077/078	Post-ex shot of slot'E' through coal deposit	S
22	PH.1	(075)[076]	Post-ex of slot 'F'	NE
23	PH.1	(075)[076]	Post-ex of slot 'F'	NE

Frame	Area	Context No.	Subject	Taken from
24	PH.1	077/076	Post-ex plan shot of slot 'G'	S
25	PH.1	077/076	Post-ex plan shot of slot 'G'	S
26	PH.1	-	General view of post -ex of PH1	NW
27	PH.1	-	General view of post -ex of PH1	NW
28	PH.1	-	General view of post -ex of PH1	SW
29	PH.1	(083)[084](085)[086]	General shot of poss slot	N
30	PH.1	[084](083)	Shot of poss slot trench [084]	E
30	PH.1	[086](085)	Shot of poss slot trench [086]	E
4914	DSLR	Film No. 5	Lang Loan	Camera
1	-	-	ID shot	-
2	P.PH.1	073[074]	General view during geo-tech work on mineshaft	SE
3	P.PH.1	073[074]	General view during geo-tech work on mineshaft	SE
4	P.PH.1	073[074]	General view during geo-tech work on mineshaft	SE
5	P.PH.1	100/101	Plan shot of mineshaft	NW
6	P.PH.1	100/101	Plan shot of mineshaft	NW
7	P.PH.1	[085](086)	Post ex shot of slot through linear feature	NE
8	P.PH.1	[085](086)	Post ex shot of slot through linear feature	NE
9	P.PH.1	[083](084)	Post ex plan of slot 1 through linear feat	NE
10	P.PH.1	[083](084)	Post ex section shot of slot 1 through linear feat	NE
11	P.PH.1	[091](092)	Detail shot of stone filled linear feat	SW
12	P.PH.1	[102](103)	Detail shot of stone filled linear feat	NW
13	P.PH.1	[098](099)	Plan shot of dark sub-square feat	SW
14	P.PH.1	94,095	Post ex shot of linear feat	N
15	P.PH.1	94,095	Post ex shot of linear feat	N
16	P.PH.1	-	Post ex shot of dark rectangular feat	S
17	P.PH.1	-	Post ex shot of dark rectangular feat	S
18	P.PH.1	093/104	Pre ex shot of poss mineshaft	S
19	P.PH.1	093/104	Pre ex shot of poss mineshaft	S
20	P.PH.1	093/104	Mineshaft in section	S
21	P.PH.1	093/104	Mineshaft in section	S
22	P.PH.1	105/106	Rectangular feature in section of slot trench	S
23	P.PH.1	105/106	Rectangular feature in section of slot trench	S
24	P.PH.1	107	In section of natural coal seam	S
25	P.PH.1	107	In section of natural coal seam	S
26	P.PH.1	(097)[096]	S. facing section of slot 'A' terminus	S
27	P.PH.1	(097)[096]	W. facing section of slot 'A' terminus	W
28	P.PH.1	(097)[096]	N. facing section of slot 'B'	N
29	P.PH.1	(097)[096]	N. facing section of slot 'B'	N
30	P.PH.1	(097)[096]	N. facing section of slot 'C'	N
31	P.PH.1	(097)[096]	N. facing section of slot 'C'	N
32	P.PH.1	(097)[096]	Oblique view of terminus in slot 'D'	NE
4914	DSLR	Film No. 6	Lang Loan	Camera
1	-	-	ID shot	-
2	PH.1	(109),110)[111,112]	Post ex of slot trench through 109-112	W
3	PH.1	(109),110)[111,112]	Post ex of slot trench through 109-112	W
4	PH.1	(109),110)[111,112]	Post ex of slot trench through 109-112	W
5	PH.1	(109),110)[111,112]	Post ex of slot trench through 109-112	NW
6	PH.1	(109),110)[111,112]	Post ex of slot trench through 109-112	NW
7	PH.1	[135](136)	Pre ex shot of poss pit	NE
8	PH.1	[135](136)	Post ex plan of feature [135]	S
9	PH.1	[135](136)	Post ex section of [135]	S
10	PH.1	[115](116)	Pre ex of linear feature [115] extending to mineshaft	SW
11	PH.1	[115](116)	Pre ex of linear feature [115] extending to mineshaft	SW
12	PH.1	[115](116)	Trowel pointing to in situ pipe system	SW
13	PH.1	[113](114)	Pit cut 113 SE. facing section	SE

Frame	Area	Context No.	Subject	Taken from
14	PH.1	[113](114)	Pit cut 113 SE. facing section	SE
15	PH.1	[122](121)	Post ex shot of natural pit 122	SW
16	PH.1	[119](120)	Pre ex of linear feature	W
17	PH.1	[115](116)	Post ex shot of slot through [115]	W
18	PH.1	[115](116)	Post ex section [115]	W
19	PH.1	(88)[87]	Pit cut [087] general view	SE
20	PH.1	(88)[87]	S. facing section quad of pit cut [087]	SE
21	PH.1	[119](120)	Detail of shot of SW. facing section of [119]	SW
22	PH.1	[119](120)	Post ex shot of slot through [119]	SW
23	PH.1	[119](120)	Post ex shot of slot through [119]	SW
24	PH.1	[119](120)	Post ex shot of slot through [119]	SW
25	PH.1	[125](126)	Pre slot 'A' in feat 125	S
26	PH.1	[125] (126)	Pre ex of slot 'B' through D shaped feature [125]	E
27	PH.1	[125](126)	Post ex shot of slot 'A' in plan	NE
28	PH.1	[125](126)	Post ex section slot 'A'	NE
29	PH.1	[125](126)	N. facing section slot 'A'	N
30	PH.1	[125](126)	Post ex shot of slot 'B' through [125]	SW
31	PH.1	[125](126)	Post ex shot of slot 'B' through [125]	SE
4914	DSLR	Film No. 7	Lang Loan	Camera
1	-	-	ID shot	-
2	PH.1	[125'127](126,128)	Post ex shot of slot 'C' through 125 & 127	N
3	PH.1	[127](128)	Post ex of feature [127]	NE
4	PH.1	[127](128)	Post ex of feature [127]	NE
5	PH.1	[129](130)	pre ex shot of small pit/ post hole [129]	W
6	PH.1	[129](130)	pre ex shot of small pit/ post hole [129]	W
7	PH.1	[146](137)	Shot of mineshaft[146] in slot trench	W
8	PH.1	(90)[89]	Shaft cut [089]	NE/E/W
9	PH.1	(90)[89]	Shaft cut [089]	NE/E/W
10	PH.1	(90)[89]	Shaft cut [089]	NE/E/W
11	PH.1	[133,131](134,139,138)	Pre ex shots of features 133,131,138	SE
12	PH.1	[133,131](134,139,138)	Pre ex shots of features 133,131,138	SE
13	PH.1	[133,131](134,139,138)	Pre ex shots of features 133,131,138	SE
14	PH.1	[129](128)	Post ex plan shot slot through [127]	NW
15	PH.1	[129](128)	Post ex section shot slot through [127]	NW
16	PH.1	[117](118)	Shaft general view possibly previously recorded with a different number?	E
17	PH.1	[140](141)	Linear pre ex	E
18	PH.1	[151](152)	Post ex shot of slot through rig and furrow	SE
19	PH.1	[151](152)	Post ex shot of section through rig and furrow	SE
20	PH.1	[149](150)	Pre ex shot of right furrow [149]	SE
21	PH.1	[147](148)	Pre ex shot of right furrow [147]	SE
22	PH.1	[155](156)	Pre ex shot of rig and furrow [155]	SE
23	PH.1	[153](154)	Pre ex shot of mineshaft [153]	NE
24	PH.1	[159](160)	Pre ex shot of mineshaft [159]	N
25	PH.1	[142](143)	Pre ex shot of mineshaft [142]	SE
26	-	-	Pre ex shot of mineshaft	-
27	PH.1	[142,153,159](143,154,160)	Pre ex shots of 3 adjacent mine shafts	SE & NE
28	PH.1	[142,153,159](143,154,160)	Pre ex shots of 3 adjacent mine shafts	SE & NE
29	PH.1	[140](141)	Pre ex shot of linear feature [140]	SE
30	PH.1	[157](158)	Pre ex shot of rig and furrow	SE
31	PH.1	[157](158)	Pre ex shot of rig and furrow	-
32	PH.1	142,143,153,154,159,160	Pre ex shot of mineshafts [142,153,159] oblique	N
33	PH.1	142,143,153,154,159,160	Pre ex shot of mineshafts [142,153,159] oblique	N
34	PH.1	[140](141)	Pre ex shot of linear feature	SW

Frame	Area	Context No.	Subject	Taken from
4914	DSLR	Film No. 8	Lang Loan	Camera
1	-	-	ID shot	-
2	PH.1	[140](141)	Shot of post ex feature [140]	S
3	PH.1	[140](141)	Shot of post ex section feature [140]	SE
4	PH.1	161,165,168,163	Pre ex of features	E
5	PH.1	161,165,168,163	Pre ex of features	S
6	PH.1	161,165,168,163	Pre ex of features	W
7	PH.1	167,168	Pre ex of poss furrows	S
8	PH.1	161,162,163,164	Pre ex of mineshafts	W
9	PH.1	161,162	Pre ex of mineshafts	S
10	PH.1	165,166	pre ex of linear features	SE
11	PH.1	161,162	Post ex plan of square shaft	S
12	PH.1	161,162	Post ex section of square shaft	S
13	PH.1	153,154	Post ex shot showing SW. facing section	SW
14	PH.1	153,154	Post ex shot showing NW. facing section	NW
15	PH.1	[170,173]	Post ex 170 & 173 pits	E
16	PH.1	[170,173]	Post ex 170 & 173 pits	E
17	PH.1	[170,173]	Post ex 170 & 173 pits	E
18	PH.1	-	Quarry pits section 'A'	NW
19	PH.1	-	Quarry pits section 'A'	NW
20	PH.1	-	Quarry pits section 'B'	NW
21	PH.1	142,143	Post ex shot of poss mine shaft 142 S. No board	SE
22	PH.1	142,143	Post ex shot of poss mine shaft 142 S. No board	SE
23	PH.1	142,143	Post ex shot of poss mine shaft 142 S. No board	SE
24	PH.1	142,143	Post ex shot of poss mine shaft 142 S. No board	SE
25	PH.1	163,164,175	Post ex shot of poss mineshaft SE. facing section	SE
26	PH.1	163,164,175	Post ex shot of poss mineshaft SE. facing section	SE
27	PH.1	163,164,175	Post ex shot of cut[163] showing redeposited natural	SW
28	PH.1	(105)[106]	S. facing section [106] linear	S
29	PH.1	(105)[106]	S. facing section [106] linear	S
30	PH.1	-	General shot of rumble ditch	S
4914	DSLR	Film No. 9	Lang Loan	Camera
1	-	-	ID shot	-
2	PH.1	[176](177)	Western extent of [176] with (177) cleared	S
3	PH.1	[176](177)	Western extent of [176] with (177) visible in trench	S
4	PH.1	[178](179)	Pre ex shot of [178](179)	NNW
5	PH.1	[180](181)	Pre ex of [180](181)	SE
6	PH.1	[180](181)	Gen shot of location [180](181)	SE
7	PH.1	[180](181)	Gen shot of location [180](181)	SE
8	PH.1	[178](179)	Excavated portion of (179)	S
9	PH.1	[178](179)	Excavated portion of (179)	S
10	PH.1	-	Gen shot of western extent of [176]	S
11	PH.1	[170](177)	Suspected width of quarry [176]	E
12	PH.1	[178](182)	Gen views shaft,poss + slot trench	NE
13	PH.1	[178](182)	Gen views shaft,poss + slot trench	NE
14	PH.1	[178](182)	Gen views shaft,poss + slot trench	NE
15	PH.1	[184](185)	Gen view of [184](185)	N
16	PH.1	[184](185)	Gen view of [184](185)	S
17	PH.1	[184](185)	Edge detail of pit [184]	N
18	PH.1	[184](185)	N. facing section of [184]	S
19	PH.1	[184](185)	S. facing section of [184]	N
20	PH.1	[184](185)	Plan view of section in [184]	S
21	PH.1	[184](185)	Section in wider shot	S
22	PH.1	186,187,188	Gen shot of pit [186]	N
23	PH.1	188	Detail of (188) in SE. section of [186]	N

Frame	Area	Context No.	Subject	Taken from
24	PH.1	[186](187,188)	Gen shot of pit [186]	S
25	PH.1	[189](190)	Gen shot of ditch	SW
26	PH.1	[195](196)	Gen view of potential shaft	SW
27	PH.1	[193](194)	Amorphous linear cut 193	S
28	PH.1	[197](198)	Potential mineshaft	S
4914	DSLR	Film No. 10	Lang Loan	Camera
1	-	-	ID shot	-
2	PH.3	[189](190)	General view towards a road of poss subsidance	N
3	PH.3	201,202,203	Potential shaft and slot	W
4	PH.3	201,202,203	Potential shaft and slot	W
5	PH.3	As above	Shaft 201 slot trench 203 & 208	S
6	PH.3	[199](200)	Poss shaft 199	SW
7	PH.3	[208](209)	Slot trench	SW
8	PH.3	[191](192)	Poss area of subsidance	E
9	PH.3	[205](206)	Plan of poss mineshaft	S
10	PH.3	[241](242)	Plan of poss mineshaft [205]	W
11	PH.3	[212](213)	Potential shaft	W
12	PH.3	[212](213)	Slot trenches associated with poss shaft [212]	W
13	PH.3	210,211,212,213	Shaft 212 with 210 left of frame	SE
14	PH.3	241,242	General view of shafts	E
15	PH.3	[216](217)	Plan of shaft filled pit [216]	SW
16	PH.3	215	Potential mineshaft with [212](213) front of frame	S
17	PH.3	[218](219)	J-shaped linear curvilinear cut	SE
18	PH.3	[235](236)	Shaft 235 adjacent 237&238 pit [237]	S
19	PH.3	[239](240)	Mineshaft cutting bedrock	S
20	PH.3	[220,222](221,223)	Potential shaft [220] & adjacent pit [222]	SE
21	PH.3	[224](225'226)	Potential shaft	S
22	PH.3	[224](225)	Sondage into poss natural feature	E
23	SR	(256)???	Plan of [255] with [144]	SW
24	SR	[257](258)	Plan of mineshaft [257]	S
25	SR	[249](250)	Plan of pit [242]	SE
26	PH.3	[233](234)	Potential shaft	SE
27	PH.3	234	Detail of concentration of conv and machine show	SE
28	PH. 3	234	Fragments towards centre of shaft fill (234)	
4914	DSLR	Film No. 11	Lang Loan	Camera
1	-	-	ID shot	-
2	PH.3	[229,230](230,232)	Potential shaft during cleaning	E
3	PH.3	[231](232)	Potential pit [231](232)	N
4	PH.3	[231](232)	Potential pit [231](232)	N
5	PH.3	[231](233)	Potentila mineshaft	SE
6	AO5H	[247](248)	S. facing section through linear cut 247	SE
7	AO5H	[247](248)	S. facing section through linear cut 247	SE
8	AO5H	[208](209)	E. facing section of linear cut [208]	E
9	AO5H	[208](209)	E. facing section of linear cut [208]	E
10	AO5H	-	Void adjacent to shaft 257	N
11	AO5H	-	Void adjacent to shaft 257	N
12	AO5H	[249](250)	Post hole E. facing section	E
13		[249](250)	Post ex plan of posthole	N
14	PH.3	[189](190)	Machine testing area of subsidance	Ex2,Sx2
15	PH.3	[189](190)	Machine testing area of subsidance	Ex2,Sx2
16	PH.3	[189](190)	Machine testing area of subsidance	Ex2,Sx2
17	PH.3	[189](190)	Machine testing area of subsidance	Ex2,Sx2
18	PH.1	[201,203](202,204)	Slot 203/204 + shaft 201/202	E
19	PH.1	[218](219)	SE. facing section of trench	SE
20	PH.1	[218](219)	SE. facing section of linear	SE

Frame	Area	Context No.	Subject	Taken from
21	-	-	Pre-strip general view	E
22	-	[177]	During strip. Machine works	E
23	-	[176]	Gen view infilled quarry	NE
24	-	[176]	Gen view infilled quarry	NE
25	PH.3	[189](190)	General view area of infill, subsidance	S
26	PH.3	[189](190)	General view area of infill, subsidance	S
27	PH.3	[189](190)	General view area of infill, subsidance	S
28	PH.3	[189](190)	General view area of infill, subsidance	W
29	PH.3	(262,264)[263,265]	Gen view of stone filled trench, inspection chamber	-
30	PH.3	(264,266)[265,269]	Drain and concrete concrete inspection chamber	-
31	PH.3	[176](177)	Material infilling N. End of quarry	N
32	PH.3	[176](177)	Material infilling N. End of quarry	W
33	PH.3	[189](190)	Infilling part of area of subsidance	E
34	PH.3	(270)	Deposit 270 with drainage trenches	SE
35	PH.3	(271)[272]	NW. facing section of ditch	NW
36	PH.3	(277)[278]	Pre ex of industrial structure	SE
37	PH.3	(277)[278]	Pre ex of industrial structure	NE
4914		FILM No.12		
1	-	-	ID Shot	-
2	-	(277)[278]	Mid ex of industrial structure [278]	SE
3	-	(277)[278]	Post ex of industrial structure [278]	SE
4	-	(277)[278]	NE facing section of industrial structure [278]	NE
5	-	(273)[274]	NW facing section of pit [274]	NW
6	-	(279)[280]	Plan of possible shaft [280]	S
7	-	(281)[282]	Plan of possible shaft [282]	NE
8	-	(283)[284]	Plan of small pit [284]	NE
9	-	(285)[286]	Plan of ashy linear [286]	N
10	-	(287)[288]	Plan of ashy linear [288]	NW
11	-	(289)[290]	Plan of possible shaft [290]	SW
12	-	(293)[294](295)[296]	Plan of pits [294] and [296]	NW
13	-	(275)[276]	Plan of linear [276]	SE
14	-	(303)[304]	Plan of exposed linear [304]	E
15	-	(297)[298]	Plan of dumping pit [298]	E
16	-	(287)[288][305](306)	N facing sections of pits [288] and [305]	N
17	-	(287)(306)[305]	Cut of modern dumping pit [305]	N
18	-	(287)(306)[305]	Cut of modern dumping pit [305]	N
19	-	(285)(307)[286]	SE facing section of pit [286]	SE
20	-	(301)[302]	Plan of linear [302]	W
21	-	-	General view of stripped area	N
22	-	-	General view of stripped area	N
23	-	-	General view of stripped area and boundary	WSW
4914		File 1X		
1	-	-	Start of day photo, SE end of site	WSW
2	-	-	NW end of site after stripped	WNW
3	-	-	NW end of site after stripped	WNW
4	-	-	Working shot of stripping	WNW
5	-	-	Stripped NW area in SW corner of site	S E
6	-	-	Possible feature with modern white glazed pottery in top	S
7	-	-	Mid third of strip in S end of field	SE
8	-	-	Possible features in SE corner	NNE
9	-	-	Possible feature in SE corner	SSW
10	-	-	Post Medieval feature in SE corner	WNW
11	-	-	Post Medieval disturbance and possible features	WSW
12	-	-	Post Medieval disturbance and possible features	WSW

Frame	Area	Context No.	Subject	Taken from
13	-	-	Stripped ENE part of SE corner of site	ESE
14	-	-	Last stripped area of the site of the day	S
15	-	-	All of the stripped area so far in this field	SE
16	-	-	Start of day stripping	W
17	-	-	Start of day stripping	SW
18	-	-	NW part of first strip of the day	SSE
19	-	-	Mid part of first strip	W
20	-	-	SE part of first strip	S
21	-	-	First part of second strip	WNW
22	-	[516](517)	Pre ex linear [516]	SW
23	-	[516](517)	Pre ex linear [516]	SW
24	-	[516](517)	Glass find 01 in situ in linear [516]	NNE
25	-	[516](517)	NE facing section of ditch [516]	NE
26	-	[516](517)	Plan shot of linear [516]	ESE
27	-	[516](517)	SW facing section of ditch [516]	WSW
28	-	[516](517)	Visible extent of ditch [516]	NNE
29	-	[516](517)	The extent of ditch from slot	NNE
30	-	[516](517)	The extent of ditch from slot	NNE
31	-	[518](519)	Pre ex posthole [518]	NW
32	-	-	Stripped 2/3ds of the second strip of the day	SW
33	-	[516](517)	Half sectioned ditch [516]	NNE
34	-	-	Stripped S part of field	NW
35	-	-	Stripped area in E end of field	SE
36	-	-	Stripped area in E end of field	NE
37	-	-	Pre ex possible pit	SSW
38	-	-	Pre ex possible features	SSW
39	-	-	Last stripped area of the site of the day in E part	S
40	-	-	Pre ex large possible pit	W
41	-	-	Pre ex possible pit	SW
42	-	-	Pre ex pit	NW
43	-	[524](525)	Pre ex pit [524]	SE
44	-	[520](521)	Pre ex pit [520]	NW
45	-	[522](523)	Pre ex posthole [522]	S
46	-	[524](525)	Post ex pit [524]	SW
47	-	[526](527)	Post ex pit [526]	SE
48	-	[528](529)	Post ex pit [528]	SW
49	-	[530](531)	Pre ex pit [530]	SE
50	-	[532](533)	Pre ex pit [532]	SE
51	-	-	Area stripped between 22-25/10/18	NE
52	-	-	Area stripped between 22-25/10/18	W
53	-	-	Area stripped between 22-25/10/18	N
54	-	-	Area stripped between 22-25/10/18	SW
55	-	-	Stripped area 26/10/18	NW
56	-	[516](517)	Pre ex ditch [516]	SW
57	-	-	Stripped area from soil bund	SE
58	-	-	Stripped area from soil bund	NW
59	-	-	Stripped area from soil bund	NW
File 13				
1	-	-	ID Shot	-
2	-	-	General shot of pre-stripped area	S
3	-	-	General shot of pre-stripped area	SE
4	-	-	General shot of pre-stripped area	N
5	-	[500](501)	Plan of pit [500]	N
6	-	[502](503)	Plan of pit [502] with board	N
7	-	[502](503)	Plan of pit [502] without board	N

Frame	Area	Context No.	Subject	Taken from
8	-	(504)	Soil spread (504) with board	N
9	-	(504)	Soil spread (504) without board	N
10	-	(504)	Soil spread (504) without board	NE
11	-	(504)	Soil spread (504) without board	NW
12	-	-	Shot of sewer area near Miller site 4988	NW
13	-	-	Shot of second sewer area	NW
14	-	-	Shot of third sewer area	NW
15	-	-	General shot of stripped area	SW
16	-	-	General shot of stripped area	SW
17	-	-	General shot of stripped area	NE
18	-	-	General shot of stripped area	SW
19	-	-	Trench 37 and modern feature	SW
20	-	-	Trench 37 and modern feature	NE
21	-	-	East corner strip with no archaeology	NE
22	-	-	East corner strip with no archaeology	SE
23	-	[505][507][509]	Pre ex plan of pits [505][507][509]	S
24	-	[505][507][509]	Pre ex plan of pits [505][507][509]	W
25	-	[513]	Plan of quarry pit [513]	NE
26	-	[505]	Post ex pit [505]	S
File 14				
1	-	-	ID Shot	-
2	-	[507](508)	Post ex shot of pit [507]	S
3	-	-	Area shot of stripped area	NE
4	-	-	Area shot of main strip so far	SW
5	-	[511]	Area shot of recent strip	NE
6	-	[511]	Shot of recent strip [511]	SW
7	-	[511]	Area shot of [511]	SW
8	-	-	Shot of recent stripped area with no archaeology	SW
9	-	-	End of week shot of stripped area	NE
10	-	-	Area stripped on 10/09/18	SW
11	-	[511]	Edge of [511] in stripped area	S
12	-	[511]	Other edge of [511]	W
13	-	[511]	Centre of [511] under stripped	SW
File 15				
1	-	-	Start of day stripping	NW
2	-	-	First half of first strip revealed	NW
3	-	-	Possible large pit in NE part of first strip	NNW
4	-	-	Possible feature	NW
5	-	-	Possible feature	NW
6	-	-	East half of strip 1 revealed	NW
7	-	-	East half of strip 1 revealed	NW
8	-	-	More of possible feature revealed at easternmost part of strip	NW
9	-	-	More of possible feature revealed at easternmost part of strip	NW
10	-	-	Last part of strip 1 revealed to the East	NW
11	-	-	Start of day strip	SE
12	-	-	Almost all of last part revealed	NW
13	-	-	Industrial features	SW
14	-	-	Third industrial feature in NE corner	SW
15	-	-	Last part of first strip revealed	ENE
16	-	-	Fourth industrial deposit in strip 1	ENE
17	-	[536](537)(538)(539)	Pre ex pit [536]	NW
18	-	[536](537)(538)(539)	Post ex quarter section of pit [536]	NW
19	-	[536](537)(538)(539)	Post ex quarter section of pit [536]	SW

Frame	Area	Context No.	Subject	Taken from
20	-	[536](537)(538)(539)	Post ex quarter section of pit [536]	SSE
21	-	-	First western third of second strip revealed	WNW
22	-	-	Possible feature	NW
23	-	-	Mid part of strip 1 revealed	NW
24	-	-	Modern features	SSW
25	-	-	Modern features	SSW
26	-	-	Last photo of the day 1/11/18	SSW
27	-	-	First photo of the day 2/11/18 Strip 2 Eastern half	NW
28	-	-	Dip in natural in Eastern end of strip 2	NWN
29	-	-	Rubbish dump pit	NWN
30	-	-	Eastern end of strip 2	NW
31	-	-	Eastern end of strip 2	NE
32	-	-	Possible pit/deposit E of spoil heap	NNE
33	-	-	Possible feature E of spoil heap	N
34	-	-	Stripped area E of spoil heap	NE
35	-	-	Last part of strip 2 revealed	E
36	-	-	First photo of the day 5/11/18 Strip started in NW	NW
37	-	-	Square pit feature with modern finds	NW
38	-	-	Pre ex possible pit	NW
39	-	-	Half section of feature - modern deposit	SW
40	-	-	Modern features	SW
41	-	-	Modern feature	SW
42	-	-	Modern feature	SW
43	-	-	First bit of strip revealed	NW
44	-	-	Area revealed west of spoil between 31/10 and 5/11/18.	W
45	-	-	Half section started on modern feature	SW
46	-	-	Modern feature after investigation	SW
47	-	-	Mid part of first strip of the day	NW
48	-	-	Modern feature	NW
49	-	-	Last bit of strip of the day 5/11/18	NW
50	-	-	Start of day strip 6/11/18	SE
51	-	-	ID shot	
52	-	-	Removing soil from dip in natural/dumping pit	NNE
53	-	-	Area between spoil heaps revealed	NW
54	-	-	Modern rubbish pit revealed	NNE
55	-	-	Modern rubbish pit revealed	N
56	-	-	Section of rubbish pit visible below spoil heap	NNE
57	-	-	Section of rubbish pit visible below spoil heap	NNE
58	-	-	Section of rubbish pit visible below spoil heap	NNE
59	-	-	Start of strip 2 of the day showing modern field drains	NW
60	-	-	Last shot of the day, strip 2 6/11/18	NW
61	-	-	Start of day strip 7/11/18	NW
62	-	-	Possible feature	NW
63	-	-	Mid part of strip 2 started 6/11/18	NW
64	-	-	Partial section of modern pit	SW
65	-	-	Plan of modern pit	NW
66	-	-	Industrial deposit features on Eastern half of site	NE
67	-	-	Industrial deposits and feature NW of large spoil heap	SE
68	-	-	NE part of site between spoil heaps - much industrial disturbance	ENE
69	-	-	NE part of site between spoil heaps - much industrial disturbance	NE
70	-	-	NE part of site between spoil heaps - much industrial disturbance	NNE
71	-	-	Modern pit NW of large spoil heap	NW

Frame	Area	Context No.	Subject	Taken from
72	-	-	NE last part of strip 2	NW
73	-	-	First part of second strip of the day 7/11/18	NW
74	-	-	Last shot of the day 7/11/18	NW
75	-	-	First shot of the day 8/11/18 halfway into strip 2	NW
76	-	-	Mid part of strip 2 from 7/11/18	NW
77	-	-	Last SE part of strip 2	NW
78	-	-	First part of new strip	NNW
79	-	-	last photo of the 8/11/18, halfway into strip	NW
80	-	-	First shot of 9/11/18 halfway into strip	NW
81	-	-	Mid part of strip	NW
82	-	-	SE last part of first strip of the day	NNW
83	-	-	Last photo of 9/11/18, NW part of new strip	NW
84	-	-	Stripped area 12-13/11/18. No archaeology	SE
85	-	-	Stripped area 12-13/11/18. No archaeology	NW
86	-	-	Stripping in the rain	NW
87	-	-	Stripped area 14/11/18 and area to strip from bund	SE
88	-	-	Stripped area	NE
89	-	-	Finished site strip	SW
90	-	-	Finished site strip	NW
91	-	[516](517)	Ditch terminus [516]	NE
92	-	[516](517)	Ditch [516]	NE
93	-	[516](517)	Ditch [516]	SW
94	-	[516](517)	Ditch [516] with previous slot	SW
95	-	[516](517)	Ditch [516]	SW
96	-	[516](517)	Section of ditch [516]	SW
97	-	[516](517)	Ditch [516]	NE
98	-	[516](517)	Ditch terminus with better light	NE

Appendix F: Discovery and Excavation in Scotland Entry

LOCAL AUTHORITY:	Edinburgh City
PROJECT TITLE/SITE NAME:	Lang Loan, West Edge Farm, Edinburgh: Monitored Topsoil Strip, Map, and Sample
PROJECT CODE:	4914
PARISH:	Edinburgh
NAME OF CONTRIBUTOR(S):	Dave McNicol
NAME OF ORGANISATION:	GUARD Archaeology Limited
TYPE(S) OF PROJECT:	Strip, Map, and Sample
NMRS NO(S):	None
SITE/MONUMENT TYPE(S):	Quarry
SIGNIFICANT FINDS:	1863 half gold sovereign
NGR (2 letters, 6 figures)	NT 285 675
START DATE (this season)	14 th May 2018
END DATE (this season)	16 th November 2018
PREVIOUS WORK (incl. DES ref.)	Trial Trenching and Metal Detecting Survey
MAIN (NARRATIVE) DESCRIPTION: (May include information from other fields)	<p>GUARD Archaeology Limited were commissioned by Persimmon Homes to undertake an archaeological monitored topsoil strip, map, and sample at Lang Loan, West Edge Farm, Edinburgh. This work was required as a condition of the planning permission (Planning Ref: 16/06036/PPP) for a residential development on the site. The work was undertaken between 14th May and 16th November 2018, and followed on from a metal detecting survey and trial trench evaluation carried out by GUARD Archaeology Limited between November and December 2017 (McNicol & Ruiz Nieto 2018). The metal detecting survey uncovered a mixture of 19th and 20th century metal finds, including horseshoes, square headed iron nails, and iron agricultural fragments. The trenched evaluation uncovered a number of features relating to quarrying activity across the site.</p> <p>As a result of this previous phase of archaeological investigation, a total area amounting to 45,148 m² (approximately 69 % of the development area) was stripped of topsoil to establish the extent of the archaeological features on site. This revealed 118 features associated with nineteenth century quarrying activity in the area, as well as medieval agricultural features, in the form of a series of rig and furrow, and a 1863 gold half sovereign.</p>
PROPOSED FUTURE WORK:	None
SPONSOR OR FUNDING BODY:	Persimmon Homes
CAPTION(S) FOR ILLUSTRS:	
ADDRESS OF MAIN CONTRIBUTOR:	GUARD Archaeology Limited, 52 Elderpark Workspace, 100 Elderpark Street, Glasgow G51 3TR
EMAIL ADDRESS:	bob.will@guard-archaeology.co.uk
ARCHIVE LOCATION (intended/deposited)	Archive to be deposited in NMRS. (intended)

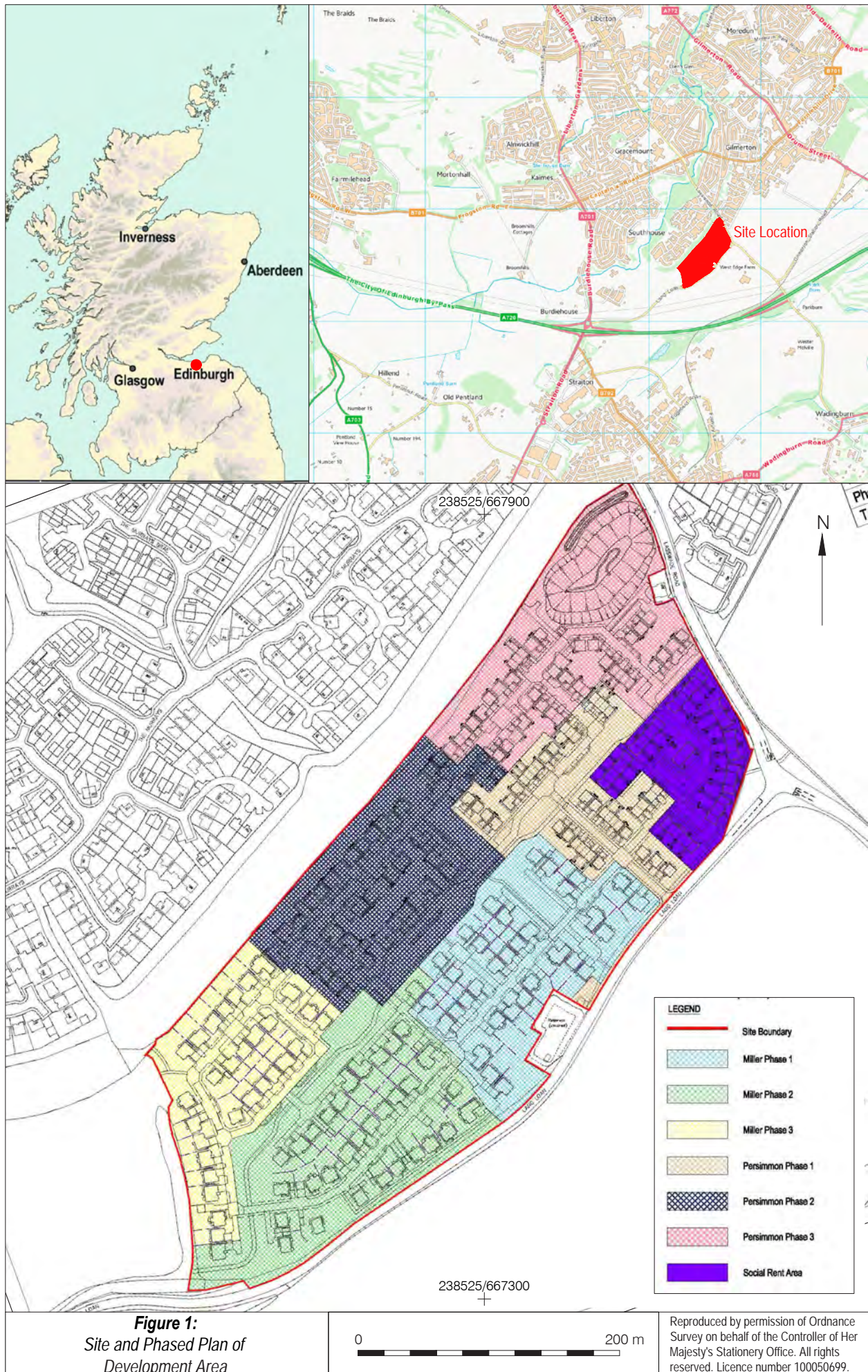
Appendix G: WSI**LANG LOAN, EDINBURGH**

MONITORED TOPSOIL STRIP, MAP AND SAMPLE

WRITTEN SCHEME OF INVESTIGATION - ADDENDUM

PROJECT 4914





Executive Summary

- 1.1 This Written Scheme of Investigation Addenda forms the archaeological method statement for the archaeological mitigation works of the development area at Lang Loan, Edinburgh (Figure 1). This document will require to be agreed by the City of Edinburgh Council Archaeology Service (CECAS), prior to the commencement of archaeological fieldwork.

Introduction

- 2.1 This Written Scheme of Investigation (WSI) Addenda sets out the methodology for the archaeological mitigation works Stage 2 excavation required (Planning Ref: 16/06036/PPP) in support of the erection of a residential development with associated roads, open space, and landscaping in accordance with the relevant archaeology guidance specified by the Planning Authority. Archaeological monitoring of the topsoil stripping of the whole area to be developed will be undertaken in accordance with the recommendations of CECAS.
- 2.2 This WSI Addendum outlines the programme of archaeological works that are needed to mitigate the effects of the development. It details the methodology to be employed in implementing the Stage 2 excavation works. The mitigation methodology to be employed during Stage 3 post excavation analysis and publication, if required, will be specified in *addenda* to this document. These *addenda*, if required, will be submitted for the agreement of CECAS prior to the commencement of any archaeological work. All phases of work will be funded by the developer as required by the Planning Authority.

Site Location

- 3.1 The development area is located to the south of Gilmerton, Edinburgh (centred at NGR: NT 2850 6757). The development area comprises 10.93 ha split into seven phases (Figure 1). The development area is bounded to the east by Lasswade Road, and to the south by Lang Loan. To the north is a tree-belt, with existing housing beyond, and a second tree belt marks the western edge of the area.

Archaeological Background

- 4.1 An Environmental Impact Assessment (EIA) of the development area included a chapter that assessed the cultural heritage within and surrounding the Lang Loan development area. The cultural heritage assessment, which was carried out by GUARD Archaeology and included a walkover survey, identified the following sites within the development area (Figure 1):
- a cropmark enclosure (CHS 1; NMRS NT26NE 58);
 - a former limestone quarry (CHS 2) and;
 - a former quarry (CHS 3).
- 4.3 Potential prehistoric settlement within the development area was represented by the cropmark enclosure identified from aerial photography (CHS 1; photographed by RCAHMS in 1983, catalogue number SC 1458812). This site was thought to be potentially comparable with a similar cropmark settlement at Brixwold, 4.6 km south-east of Lang Loan, which was found to be of Iron Age date. However the evaluation confirmed that this feature was not archaeological.
- 4.4 The former quarry (CHS 2) is first shown on the Ordnance Survey 6" map of 1855, where it is annotated as 'limestone quarries', suggesting that the quarries were operational at that time (*Edinburghshire, Sheet 6*). The quarry remained operational in 1877, but by 1895 was annotated as 'old quarries' (*Edinburghshire Sheet VIII.NW*). The quarry had been partially in-filled by 1909, and was fully re-stored during the later twentieth century.
- 4.5 The second former quarry (CHS 3) is also first depicted on the Ordnance Survey 6" map of 1855, although it is merely annotated as 'old quarries', indicating that the quarries were no longer opera-

tional. It is possible that, following exhaustion of the stone at this location, operations transferred to the limestone quarry site (CHS 2). The 1855 map indicates that trees were growing at this former quarry site and this, coupled with the absence of hachures, suggests that some in-filling of the quarries had taken place.

- 4.6 A metal detecting survey and evaluation carried out in 2017 by GUARD Archaeology, revealed metal finds relating to the agricultural past of the site along with evidence of eighteenth/nineteenth century rig and furrow, and quarrying activity (McNicol & Ruiz Nieto 2017). On submission of the report CECAS requested further works in the form of a monitored topsoil strip, map and sample of any surviving archaeology, to include features relating to the agricultural and industrial landscape of the early modern period.

Aims, Objectives and Scope

- 5.1 The aims of the archaeological monitored topsoil stripping, map and sample are:
- To map the extent and nature of the quarry workings and rig and furrow within the development area;
 - To identify the presence or absence of any archaeological deposits within the proposed area, and
 - To ensure that any surviving archaeological remains encountered during the monitored topsoil stripping and excavation are recorded to an appropriate level.
- 5.2 The objectives are therefore:
- To conduct an archaeological monitored topsoil strip, map and sample excavation of the development area, to establish the presence or absence of archaeological deposits and to determine their character, date and extent if surviving, and
 - To submit a report to data structure level for agreement to CECAS, on completion of the archaeological fieldwork. The report will include an outline of the scope of any further post-excavation works should any significant archaeology be encountered.
- 5.3 The scope of the archaeological excavation and monitored topsoil stripping is:
- that if any apparent quarry working or rig and furrow features are recorded using GPS with minimal testing to establish their extent, no further work will be required for these features;
 - that if all other archaeological features are fully excavated and recorded, or if archaeological monitored topsoil stripping encounters no significant archaeological remains, no further archaeological fieldwork will be required for this development.

Fieldwork Methodology

- 6.1 All work will be conducted in line with the following standards and guidance of the Chartered Institute for Archaeologists (CIfA), of which GUARD Archaeology is a Registered Organisation:
- Code of conduct (2014);
 - Standard and guidance for archaeological field excavation (2014);
 - Standard and guidance for the creation, compilation, transfer and deposition of archaeological archives (2014).

Archaeological Monitored Topsoil Strip, Map and Sample

- 6.2 The proposed development area will be machine stripped in a phased approach under archaeological supervision (Figure 1). This topsoil/overburden will be stripped using back acting excavators, equipped with a flat (toothless) bucket, under the constant supervision of GUARD Archaeologists (one per excavator unless working in tandem), who will act as supervisor and banksman.

- 6.3 The topsoil or overburden will be removed in spits to the first archaeological horizon or, where none was found, to the natural subsoil. Where areas of potential archaeology is exposed, the area will then be cleaned to identify any archaeological features by a team of archaeologists working behind the monitoring archaeologist(s). Any archaeological features encountered will be cleaned by hand by the on-site Archaeologist to determine their character and extent.
- 6.4 Where quarry working or rig and furrow features are uncovered the extent of such features will be established using the backacting excavators and an appropriate investigative sondage will be excavated by machine if appropriate, or by hand if more complex and/or sensitive features are apparent. The extent of all quarry working features will be surveyed using a sub-cm GPS and located within the National Grid.
- 6.5 Any significant archaeological features encountered will be dealt with by the on-site Archaeologists. Should negative-cut features be encountered, a representative sample will be 25-50% excavated to determine their significance, date and function. If the feature is archaeologically significant, it will be fully excavated and recorded to ensure their preservation through record. A full record of excavated features will be made using a single context recording system using pro forma sheets, drawings and photographs. All archaeological features will be photographed and recorded at an appropriate scale. Sections will be drawn at 1:10 and plans at 1:20. All features will be accurately surveyed using a sub-cm GPS and located within the National Grid.
- 6.6 All archaeological finds will be dealt with by the on-site Archaeologists. Finds and animal bone will be collected as bulk samples by context. Significant small finds will be three dimensionally located prior to collection. All finds will be processed to MAP2 type standards and subject to appropriate specialist assessment. If necessary, conservation of finds will be appraised to allow for specialist study.
- 6.7 All excavated feature fills and horizons will be sampled as appropriate, using bulk soil samples, for palaeo-environmental evidence.
- 6.8 A representative section will be recorded denoting depth of topsoil, any stratigraphy present and the nature of the soil. This information will be logged in the day book together with a sketch drawn to scale and a photographic record of deposits.
- 6.9 Should human remains be revealed by the excavation, the local police, the clients and the CECAS will be informed immediately. Any human remains will be accurately recorded, but left *in situ*, pending the agreement of the police, the client and the CECAS on an appropriate mitigation strategy.

Report Preparation and Contents

- 7.1 A report detailing the results of the archaeological monitored topsoil stripping and excavation will be submitted to the client within two to four weeks of completion of fieldwork and, subject to client approval, then submitted to the CECAS. The report will take the form of a Data Structure Report and will contain an analysis of the results of the fieldwork. The report will include a full descriptive text that will characterise the date and extent of any archaeological remains or deposits. It will also include plans at an appropriate scale showing the area subjected to monitored topsoil stripping, archaeological features and archiving lists of all finds, samples, field drawings and photographs.
- 7.2 If appropriate, the report will also include any addenda to this WSI for further archaeological post-excavation work, should significant archaeology have been encountered.
- 7.3 The report will include the following:
- executive summary;
 - a site location plan to at least 1:10,000 scale with at least an 8 figure central grid reference;
 - OASIS reference number; unique site code;
 - planning application reference number;
 - contractor's details including date work carried out;

- nature and extent of the proposed development, including developer/client details;
 - description of the site history, location and geology;
 - a site plan to a suitable scale and tied into the national grid so that features can be correctly orientated;
 - discussion of the results of fieldwork;
 - context & feature descriptions;
 - features, number and class of artefacts, spot dating & scientific dating of significant finds presented in tabular format;
 - plans and section drawings of the features drawn at a suitable scale;
 - initial assessment of relevant finds/samples if appropriate;
 - recommendations regarding the need for, and scope of, any further archaeological work such as Post-excavation finds analysis, conservation & publication (Stage 3);
 - bibliography.
- 7.4 A digital copy (pdf) of the report will be prepared for the client and a further digital PDF copy sent to CECAS and to the HER archive for deposition.
- 7.5 The DSR is to be submitted to the client within 2 to 4 weeks of fieldwork completion, any PERD within 3 months of agreement to the DSR and any final publication within a year of agreement to the PERD.
- 7.6 The report will be presented in an ordered state and contained within a protective cover/sleeve or bound in some fashion. The report will be page numbered and supplemented with section numbering for ease of reference. If required, two hard copies will be prepared for the client.

Copyright

- 8.1 The copyright for any report resulting from the archaeological work undertaken as part of the project will be deemed the intellectual property of GUARD Archaeology Ltd.

Publication

- 9.1 A summary of the project results will be submitted to *Discovery and Excavation in Scotland*. In the event of minor archaeological remains being encountered during the archaeological fieldwork, it is proposed that a comprehensive report submitted to *Discovery and Excavation in Scotland*, will form the final publication of the site. A copy of this will be included in the Data Structure Report.

Archive

- 10.1 The archive for the project, including a copy of the report, will be submitted to the National Record of Historic Environment within three months of completion of all relevant work.
- 10.2 The online OASIS form at <http://ads.ahds.ac.uk/project/oasis/> will be completed within 3 months of completion of the work. Once the Data Structure Report has become a public document by submission to or incorporation into the SMR, the planning Authority will validate the OASIS form thus placing the information into the public domain on the OASIS website.

Finds Disposal

- 11.1 The arrangement for the final disposal of any finds made in connection with the archaeological work, will be deposited in keeping with Scottish legal requirements as set out in the Treasure Trove Code of Practice published by the Scottish Government in January 2016. The laws relating to Treasure Trove and *Bona Vacantia* in Scotland apply to all finds where the original owner cannot be identified. This

includes all material recovered during archaeological fieldwork. Accordingly, all assemblages recovered from archaeological fieldwork are claimed automatically by the Crown and must be reported to the Scottish Archaeological Finds Allocation Panel through its secretariat, the Treasure Trove Unit. In the event of the discovery of small finds, a filled-out copy of the form "Declaration of an Archaeological Assemblage from Fieldwork" and two copies of the pertinent Data Structure Report will be submitted to the Panel at the conclusion of the fieldwork. The Panel will then be responsible for recommending to the Queen's and Lord Treasurer's Remembrancer which museum should be allocated the finds. All artefacts will be temporarily stored by GUARD Archaeology until a decision has been made by the panel.

- 11.2 The City of Edinburgh Council (CEC) require, after finds are allocated to them, that the finds bags and boxes are numbered in accordance with accession numbers issued by CEC.

Personnel and Liaison

- 12.1 The GUARD Archaeology team will comprise the following qualified and experienced GUARD archaeologists:
- Project Manager: Warren Bailie
 - Project Director (on-site Archaeologist): Thomas Muir
 - Finds and Environmental Support and Conservation: Aileen Maule
 - Illustrator: Jennifer Simonson
 - Quality Assurance: Dr John Atkinson
- 12.2 The GUARD Archaeology Project Manager will be the point of contact for the archaeological works. A full CV for individuals concerned can be made available on request.

Monitoring

- 13.1 The proposed start date for the archaeological fieldwork is 9th May 2018. CECAS will be informed of the site mobile phone number prior to the start date so that monitoring visits can be arranged. The duration of the works will be dependant upon the main ground works contractor's pace and on the phased approach to developing the site.

Health & Safety and Insurance

- 14.1 GUARD Archaeology Limited adheres to the guidelines and standards prescribed for archaeological fieldwork set down in the (now Chartered) Institute for Archaeologists approved Health and Safety in Field Archaeology document. It is standard GUARD Archaeology policy, prior to any fieldwork project commencing, to conduct a risk assessment and to prepare a project safety plan, the prescriptions of which will be strictly followed for the duration of all archaeological fieldwork. Copies of the resultant project safety plan and of GUARD Archaeology Limited's Fieldwork Safety Policy Statement may be viewed upon request.
- 14.2 GUARD Archaeology Ltd also possesses all necessary insurance cover, proofs of which may be supplied upon request.

Sources Consulted

D. McNicol & N. Ruiz Nieto 2017 *Lang Loan, Edinburgh: Metal Detecting Survey and Evaluation Data Structure Report* GUARD Archaeology Project 4770

GUARD Archaeology Limited
52 Elderpark Workspace
100 Elderpark Street
Glasgow
G51 3TR

Tel: 0141 445 8800

Fax: 0141 445 3222

email: info@guard-archaeology.co.uk



www.guard-archaeology.co.uk