

Marches Archaeology

**Westhill Centre,
107 Hagley Road,
Stourbridge**

**Report on archaeological building recording and an
ornamental audit**

May 2004

Marches Archaeology Series 342

This report is produced by

Marches Archaeology

**Marches House
6 High Street
Clun
Shropshire
SY7 8JB**

Tel:- 01588 640976

Fax:- 01588 640796

e-mail:- marches@archaeology.kc3.co.uk

For:-

**Kendrick Homes
Tasker Street
Walsall
West Midlands
WS1 3QW**

Marches Archaeology is the trading name of Marches Archaeology Limited (Registered in England and Wales: 4095678). The directors are Nic Appleton-Fox and Richard Stone, who have worked in close association since 1991. All principal members of staff are members of the Institute of Field Archaeologists and abide by its code of practice and other regulations. *Marches Archaeology* provides a full range of archaeological services to a client base of architects, local authorities, national bodies and private individuals. Our standard services include; excavation, watching briefs, building survey, building analysis, planning advice, landscape survey, photographic recording and historical research. Specialist consultants are available to provide environmental, geophysical and finds advice and analysis.

VAT Reg. No. 656 0767 15

**Westhill Centre,
107 Hagley Road,
Stourbridge
West Midlands**

A report on an archaeological building recording and ornamental audit.

NGR: 3905 2835

**Report by
Susan Fielding**

Contents

1	Introduction.....	1
2	Aims and objectives	1
3	Methodology	2
4	Site description	2
5	Archaeological and historical background.....	2
6	The building recording.....	2
7	Discussion.....	11
8	Acknowledgements	12
9	References.....	12
10	Archive	12
11	Appendix I: Ornamental audit and photographic survey.....	13

Figures and plates

May 2004

Marches Archaeology Series 342

List of illustrations

Figure 1: Location of site

Figure 2: Plans of cellar, and Ground, First and Attic floors

List of plates

Plate 1: Rear bays of house from the south

Plate 2: Example of chimney

Plate 3: Example of decorated chimney pots

Plate 4: Southern east–west range of house from the south–east.

Plate 5: Southern east–west range of house from the south–west.

Plate 6: South–west tower from south.

Plate 7: Detail of wrought iron finial.

Plate 8: Main house from west.

Plate 9: Pediments over ground and first floor windows

Plate 10: Pediments over ground and first floor windows

Plate 11: Detail of decorative bargeboards as seen on south, west and north elevations

Plate 12: West end of north elevation

Plate 13: Detail of first floor window

Plate 14: Eastern end of northern east–west range

Plate 15: Fireplace and chimney-piece on east wall of Room 1

Plate 16: Alcove decoration in Room 1

Plate 17: Fireplace in Room 1

Plate 18: Detail of fireplace decoration

Plate 19: Fireplace in Room 1

Plate 20: Bay window in south–west corner of Room 1

Plate 21: Detail of window mouldings

Plate 22: Detail of window clasp

Plate 23: West entrance into Room 2

Plate 24: Pattern of cornicing in Room 2

Plate 25: Fireplace in Room 2

Plate 26: Room 3 looking north

Plate 27: Room 3 looking north

Plate 28: Oriel window in north wall of corridor 4a

Plate 29: Detail of oriel window

Plate 30: Corridor 4b from west

Plates 31 and 32: Northern half of plaster arch spanning corridor 4b and staircase 38

Plate 33 Blocked entrance to stairs and doorway to Room 6

Plate 34: Second entrance and niche in corridor to east of Room 6

Plate 35: North wall of Room 5

Plate 36: Room 5 from north-east corner

Plate 37: Arched recess and bay window at east end of Room 5

Plate 38: West end of Room 6

Plate 39: Coffered ceiling of Room 6

Plate 40: South wall of Room 6 with wooden surround

Plate 41: Windows in south wall of Room 7

Plate 42: Second entrance to house, with decorative fanlight

Plate 43: Cloakroom 8 from south

Plates 44 & 45: Room 9 from north and south respectively, showing discontinued cornicing and large recess

Plate 46: Room 10 from the south-east

Plate 47: Room 10 from the south

Plate 48: Room 13 showing tiling and dumb-waiter

Plate 49: Room 13 looking east

Plate 50: Room 14, tradesman's entrance with panelled door and decorative light

Plate 51: Detail of decorative light over rear door

Plate 52: Room 15 from south

Plate 53: Archway from corridor 16 to landing 19

Plate 54: Mosaic floor on half landing 19

Plate 55: Staircase from half landing 19

Plate 56: Room 22 from south

Plate 57: Room 22 from north

Plate 58: Detail of plaster ceiling

Plate 59: Detail of cornicing

Plate 60: Detail of decoration on recess spandrels

Plate 61: Fireplace in Room 22

Plate 62: Detail of decoration on chimney-piece

Plate 63: Detail of window

Plate 64: Fireplace in Room 22

Plate 65: Corridor 23 from east, showing plaster arch

Plate 66: Timber archway in corridor 23

Plate 67: Staircase to second floor from corridor 24

Plate 68: Detail of balustrade in corridor 24

Plate 69: Room 25 from east

Plate 70: Room 26 from west

Plate 71: Room 27 from north-east

Plate 72: Fireplace in Room 27

Plate 73: View along corridors 28 & 29

Plate 74: Archway spanning landing 29 and staircase 38

Plate 75: Archway from landing 29 into Room 36

Plate 76: Corridor at west end of Room 30, with archway into Room 30

Plate 77: East end of Room 30

Plate 78: Room 31 from south

Plate 79: Window in Room 34

Plate 80: Blocked doorway in south-east corner of Room 34

Plate 81: Bay window in west wall of Room 35

Plate 82: Fireplace in Room 35

Plate 83: Bay window in south-west corner of Room 36

Plates 84 & 85: Fireplace in Room 36

Plate 86: Room 37 from north

Plate 87: Fireplace in Room 37

Plate 88: Staircase 38 looking west

Plate 89: Corner bay window at top of staircase 38

Plate 90: Room 39 from south

Plate 91: Fireplace in Room 39

Plates 92 & 93: Room 40; fireplace and window

Plate 94: Room 41 from south

Plate 95: Room 42 from north

Plate 96: Room 42 from south

Plate 97: Window on second floor landing 43a

Plate 98: Detail of window clasp

Plate 99: Cupboard on landing

Plate 100: Triangular dormer in corridor 43b

Plates 101 and 102: Corridor 43b, including 'ladder' steps to window

Plate 103: Room 44 looking west

Plate 104: Fireplace in Room 44

Plate 105: Room 45 looking east

Plate 106: Fireplace in Room 45

Plate 107: Room 46 looking south

Plate 108: Room 46 looking north

Plate 109: Room 50 looking north showing hatch

Plate 110: Room 47 looking east, showing brick 'tubs'

Plate 111: Room 48 looking east

Plate 112: Room 51 looking west

Plate 113: Room 52 looking west

Plate 114: Room 54 looking west.

Plate 115: West end of corridor 53 looking west.

Plate 116: Room 57

Plate 117: Room 57

Plate 118: Room 58

Plate 119: Room 59

Plate 120: Room 60

Plate 121: Room 61

Plate 122: Room 62

Plate 123: Room 63

Plate 124: Room 65

Plate 125: 20th century extension from north west

Plate 126: 20th century extension from east

Plate 127: 20th century extension from south east

Plate 128: 20th century extension from west

Plate 129: Weather vane on folly

Plate 130: Folly from east

Plate 131: Lych gate from south

Plate 132: Detail of lych gate

Plates 133 and 134: Decorative railings in garden

**Westhill Centre,
107 Hagley Road,
Stourbridge,
West Midlands**

NGR: 3905 28335

A report on an archaeological building recording and ornamental audit.

Summary

Westhill House, 107 Hagley Road is being redeveloped for residential purposes. It is a large, red brick house dating to the turn of the 19th/20th century, with a later 20th extension at the east end. Internally the house is richly decorated, with the majority of the original fittings surviving.

1 Introduction

Kendrick Homes have submitted a planning application (ref: PO0/2406) for the redevelopment of the Westhill Centre, 107 Hagley Road, Stourbridge (NGR 3905 2835), involving a programme of refurbishment and partial demolition.

The building is listed as a historic building of local interest (ref: HBSMR 12077) by the Dudley Sites and Monuments Record. It was therefore recommended by the Local Planning Authority's Archaeological Advisor that a negative condition be attached to the planning permission, requiring the "implementation of a programme of archaeological work in accordance with a written scheme of investigation which has been submitted by the applicant and approved by the Planning Authority".

A brief was provided by the Local Planning Authority's Archaeological Advisor, on which Marches Archaeology based their project proposal, which formed the written scheme of investigation.

2 Aims and objectives

The project proposal set out the aims of the project as to prepare a level 2/3 record of the main building, the folly and the lych gate, as defined in the RCHME *Recording Historic Buildings – A Descriptive Specification*.

The Institute of Field Archaeology (IFA) defines Building Investigation and Recording as "a programme of work intended to establish the character, history, dating, form and archaeological development of a specified building, or structure, or complex and its setting, including its buried components on land, inter-tidal zone or underwater".

The purpose of Building recording is defined by the IFA as "to examine a specified building, structure, or complex, and its setting, in order to inform [either] the formulation of a strategy

for the conservation, alteration, demolition, repair or management of a building, or structure, or complex and its setting [or] to seek a better understanding, compile a lasting record, analyse the finding/record, and then disseminate the results”.

3 Methodology

Fieldwork

A survey of the building had already been carried out, and digital copies of this survey were given to Marches Archaeology prior to the commencement of fieldwork to form the basis of the drawn record. A detailed photographic survey of the interior and exterior of the building was carried out using 35mm colour transparencies and black and white negatives, together with some medium format colour and black and white negatives. A full written description of the architectural detail was prepared.

Office work

On completion of fieldwork the written, drawn and photographic records were catalogued and cross-referenced, and a site archive prepared. An assessment of the archive was carried out and this illustrated client report, which includes a non-technical summary, was produced.

4 Site description

The site consists of a large turn-of-the-century brick building of three storeys at the front and two storeys at the rear, with cellars below. At the rear of this building is a single storey extension of late 20th century date, also of brick and with a flat roof. There is a small garden and driveway to the west (front) of the property, with a larger garden to the east (rear) containing a brick folly contemporary with the original house, and a lych gate within its southern boundary.

5 Archaeological and historical background

The first record of the building is its depiction on the 2nd edition Ordnance Survey Map of 1903-12. At this time it was in the ownership of William Westwood Skidmore-Westwood, and continued to be until his death in 1946. Together with a number of other local properties, 107 Hagley Road was left to Worcestershire County Council to be used as nurseries for homeless children. The Margaret Westwood nurseries (named after William's daughter) were occupied by children from 1950 onwards, Westhill House eventually becoming part of Stourbridge College, with the Westhill clinic built within the grounds to the south of the house.

6 The building recording

Introduction

Westhill House is a large red brick house dating largely to the end of the 19th century/ early years of the 20th century. It is red brick with a tiled roof and is roughly rectangular in plan,

orientated east-west. It is set within large gardens which front to the west onto Hagley Road, and contain a brick folly and timber lych gate. At the front (west) end it is three storeys high, reducing to two, and then one, at the back of the house. On the east side of the house is a single storey extension.

Detailed descriptions of the architectural elements of the main Phase I house are provided in the ornamental audit (Appendix I), so only brief descriptions of the external elevations and the form of each room of the Phase I building are provided below. The room numbers used in this section, and for the ornamental audit are shown on Figure 2.

Phase I. Circa 1890 – 1900.

The main body of the house dates to this phase, together with the majority of the architectural features within it. The house at this time appears to have consisted of 11 ground floor rooms, nine first floor rooms, and seven second floor rooms, with at least nine cellar rooms.

Westhill House was roughly L-shape in plan, with a main range running east-west along the north side of the house. At the east end of this was a three-storey cross bay running north south. Beyond this were two two-storey bays, one aligned north-south one aligned east-west. On the south side was a second, shorter, east west range, with a polygonal projection at the south-west corner creating the effect of a tower.

The west (front elevation) is, as stated, of red brick with details in yellow sandstone, and is formed by the western gable end of the northern east-west range, the west end of the south east-west range which has a hipped roof, and the west side of the south-west 'tower' (Plate 8). The roof has red tiles, laid out in regular bands of rectangular and fish scale tiles. There are two string courses, one above the ground floor windows running across the entire elevation, and a second above the first floor windows which is not present on the gable end wall.

The main entrance to the house was through the large doorway in the gable wall, which is now covered by shuttering. The surround for the door is picked out in yellow stone, and extends above the height of the door-frame itself. The area between the top of the door-frame and this surround has been bricked in at a later date, and it is likely that there was originally some form of over-door decoration, possibly a fanlight that has been removed.

Canted bay windows to either side of the door, and on the first floor above, have mullions of yellow stone, and the lintels of all the ground and first floor windows of this elevation are of yellow stone also. On the southern two sections of the elevation, the line of stone continues between the windows to form two continuous decorative bands. Cills are formed by yellow tiles, and also continue between the windows to form two continuous bands across the whole elevation. The two central windows are topped by small pediments (Plates 9 & 10), and the gable wall has two decorative stone quoins.

At attic storey the gable end wall has 'mock' timber framing, and decorative timber barge boards. Similar barge boards frame a dormer window in the central section.

The south-west 'tower' is topped with an octagonal faceted cupola roof, also of decorative bands of tiles (Plate 6). This is topped with a decorative wrought iron finial of scrolls and spirals (Plate 7).

The south elevation (Plate 1) is again entirely of red-brick with a tiled roof in decorative bands. At the west end is the south side of the south–west ‘tower’, extending east from which is the southern east–west range. In the south elevation of the eastern bay of this range is a large chimneystack partially supported by a gablet (Plates 4 & 5). The elevation to the east of this range is stepped back, and is largely obscured at ground floor level by later additions to the building. Part of it at first floor level is clad with scalloped tiles. At the east end, the elevation steps back out.

The south side of the south–west ‘tower’ has the same decorative banding of yellow stone and tiles as seen on the west elevation but these do not extend further across the south elevation, where there is little decorative detail picked out in yellow. The string courses appear to continue along the majority of the elevation (in some places heavily obscured by vegetation), stopping at the eastern projection.

The visible windows in the southern range have yellow stone lintels with tile cills, but those in the rest of the elevation are headed by segmental arches of gauged brickwork. Dormer windows and the gablet around the western chimneystack have the same decorative barge boards seen on the west elevation.

There are a number of chimneystacks, all of which have bands of mouldings running horizontally around the stack, and vertically down the widest faces. The stacks are topped with terracotta chimney pots with inscribed decoration (Plates 2 & 3).

The north elevation consists of the north wall of the northern east–west range, at the east end of which is a gable end wall for the three storey cross bay (Plate 14). To the east of this a two storey bay steps out, the second two storey bay then stepping back in. The elevation is again of red brick, with a single band of yellow tile at first floor level running as far east as the projecting bay.

The windows are all headed with segmental arches of gauged brickwork, with the exception of a large oriel window at ground floor level (Plate 12). This oriel window, and the window above it at first floor level both contain traceried panes of leaded decoration with coloured glass (Plate 13). There are a large number of dormer windows in the roof of the east-west range, and all of these, together with the gable end wall to the east have decorative barge boards as seen on the south and west elevations. The gable end wall again has ‘mock’ timber framing at attic level.

The easternmost bay of this elevation contains the cellar entrance, accessed by brick steps leading down. The entrance is screened by a brick wall with a stepped top covered with decorative yellow coping.

The east elevation is obscured by later extensions.

Ground Floor

The ground floor of the building in this phase contained the main reception rooms, together with a small number of utility rooms.

The western entrance opened into a large lobby (Room 2, Plate 23) with a small fireplace with ornate surround in the northern wall (Plate 25), and three small sash windows, two of which flanked the door. The decorative element in this room is strong, with highly moulded

surrounds and cills for the windows and ornate cornicing and picture rails in addition to the fireplace. This would have been larger than its current size, Room 3 having been inserted at a later date.

Access from this room was into the corridor (Room 4a), and directly into Room 1, a large reception room. Room contains an extremely elaborate fireplace, with the wooden chimney-piece covering the entire chimney breast up to ceiling height, and includes elements of decoration from various styles of classical architecture as well as a large mantel mirror (Plates 15-19). The alcoves either side of the fireplace have decoration mirroring that of the fireplace as well as two 'blind' windows. Further decoration is added to the room in the form of the ornate cornicing and moulded picture rail and skirting.

In the south-west corner of the room is the polygonal projection of the south-west tower, containing a bay window of five sashes with moulded surrounds and cills (Plate 20). There is a further sash window in the west wall.

The corridor (4a & 4b) is L-shaped, and continues the highly decorative theme of reception Rooms 1 and 2. The western end of the corridor (4a) contains the large oriel window with stained glass decoration (Plate 28), together with ornate cornicing, picture rail and skirting. At the junction of corridors 4a and 4b there would have been an open staircase leading to the first floor. The banisters have been removed and the staircase blocked in at a later date, but the edge of the bottom step, and the moulded corner of the newel post can be seen protruding from the wall that now forms the south side of corridor 4b (Plate 30). The entrance to corridor 4b, and the base of the stairs were spanned by a plaster arch with decorative corbels (Plates 31 & 32), which has since been bisected by the inserted wall. Under the staircase can be seen a small round-headed entrance, now blocked, and an ornate newel post which may have accessed steps down to the cellar (Plate 33).

A door to the east of the staircase accessed Room 6, a second large reception room. This doorway has a polygonal head (Plate 33), a design necessitated by the presence of the sloping staircase to the right. This room currently has no fireplace, but the presence of a chimney on the south elevation, and its obvious function as a main reception room indicates that one must originally have been present. In the south wall is a large recess with an ornate wooden surround extending to ceiling height, which now houses a modern fire exit (Plate 40). It is certain that this recess must have originally accommodated a fireplace and chimney-piece on the scale of that seen in Room 1, which has been removed at a later date.

In the east wall is a large bay window, the recess for which is headed by a timber arch with panelled and moulded decoration (Plate 37). There is wooden panelling on all walls to a height of approximately 0.75m (Plate 38), and the ceiling has applied moulded decoration to create a coffered ceiling (Plate 39).

A third reception room would have been provided by Room 5, which would appear to have originally have been larger, incorporating Room 8, and accessible from corridors 4a and 4b. This room has been modernised to a far greater extent during later phases, and there is no fireplace, cornicing or picture rails making it difficult to reconstruct the detail of this room.

Approximately half way along corridor 4b, to the east of Room 6 was a second entrance into the house. This is a smaller doorway than that seen at the west front, with a four-centred arch surround incorporating a coloured glass fanlight (Plate 34). Immediately inside the door, on

the south wall is a semi-circular, rounded headed niche. The corridor to the east of this door was originally lit by a sash window, now blocked.

East of this point Rooms 9-15 appear to have been more utilitarian rooms. Room 9 was slightly smaller during this phase than it is currently, as evidenced by the scar of a removed wall across the ceiling and the mitred ends of the cornicing (Plates 44 & 45). In the east wall is a large recess, with a wooden surround which has a central groove on its inner face. This suggests the recess was originally a large cupboard.

The tiling in Rooms 10, 11 and 13 appears to be original to this phase, and suggests that these, together with Room 12 formed a small collection of household rooms (plates 46-49). These probably included a kitchen, scullery and pantry, although there are no utilitarian fittings remaining in any of the rooms to clarify this further, with the exception of a 'dumb waiter' in the south-east corner of Room 13 (Plate 48). These rooms have no decorative features such as cornices or picture rails.

In the north-east corner of this block of rooms, Room 14 is a small entrance hall for a third external doorway (Plate 50). This would have been the back door, and tradesman's entrance, but still has a decorative fanlight of coloured glass over it. Immediately to the left of the door is a small room (15), which may originally have been a cloakroom (Plate 52).

At the east end of corridor 16, a short flight of stone steps (Plate 53) leads up to a half landing (Room 19) with a stone mosaic floor (Plate 54). This accesses Rooms 21 and 22, which were constructed as one room in this phase. This is the largest and most ornately decorated room in the house (Plates 56 & 57).

In the north and south walls of the room are large windows, with panes of coloured glass depicting blackberry fruits and leaves along the top (Plate 63). In the east and west walls are large recesses, that to the west containing a fireplace with another ornately decorated chimney-piece with carved surround and mantel mirror (Plate 61). The eastern recess is blank, but may have originally contained another window, blocked when the modern extension was added.

The arches and spandrels of the recesses are decorated with further classical motifs (Plate 60), and the plaster ceiling is decorated with further mouldings and foliate motifs (Plate 58). The walls are bowstring in profile from the ceiling to a lower cornice, which is again formed of multiple bands of moulding, some decorated, as is the picture rail below (Plate 59).

The size and richness of architectural detail in this room indicates that it was a function room on a grand scale, and was probably used as a ballroom.

First floor

As mentioned above, there are two staircases accessing the first floor, one at the western end of the house, and the second 'back' stairs leading from the half landing (Room 19). Staircase 38 would have had an open balustrade leading into corridor 28 on the first floor, but has been blocked in at this level as at ground level. At the top of the stair is a corner bay window providing light for the staircase (Plate 89), and originally for the corridor on this floor and below. The form and decoration of this window mirrors that seen in the oriel window in corridor 4a, including upper leaded panes of coloured glass. A second arch, the same as that

seen spanning the corridor and staircase on the ground floor, can be seen within corridor 29, spanning what would have been an open landing (Plate 74).

The back staircase has a polished wood balustrade of a turned newel post, turned, spiral balusters and a moulded handrail (Plate 55). This led into the east end of corridor 28, which was an L-shaped corridor, with its main axis running east – west (Plate 65). This is lit by a small sash window at its east end, above would have been lit by the window at the top of staircase 38 at its west end.

There is an open archway with a decorative plaster arch, similar in style to that seen spanning the corridor and staircase in corridor 4b, towards the eastern end of this corridor, with a second, simpler wooden fanlight archway at the junction of the L-shape (Plate 66).

At the east end of corridor 28 were 3 reasonably large bedrooms, Rooms 22, 25, and 27. Room 25 was later subdivided into two rooms with a separate small corridor. All three of these rooms are well lit with large sash windows, and have moulded cornicing, picture rails and skirting with Rooms 22 and 25 having the ornate double banded cornicing of the reception rooms downstairs. Rooms 22 and 27 both have small fireplaces (Plates 64 & 72), with relatively simple wooden surrounds, but there is no evidence that Room 25 was originally heated, with no signs of a fireplace and no access for a flue to a chimney stack.

At the west end of corridor 28 a doorway led into corridor 29 originally an open landing, which was also L-shaped and originally incorporated Room 34. This was lit by a large window, now in Room 34, which again reflects the style of the oriel window in 4a (Plate 79), with upper panes of leaded decoration with coloured glass, as well as that at the top of stairs 38. As mentioned above, the landing was spanned by a decorative plaster arch, with two open archways with plaster arches with identical decoration gave access into Rooms 30 and 36a.

At the east end of this corridor one of these open archways accessed Room 30, a small lobby area off which now open three rooms (31-33). It is probable that Rooms 32 and 33 were originally one room, as the dividing wall between them cuts the surround of the sash window in Room 32 with the cornicing, picture rail and skirting to the dividing wall applied as part of the alteration which is may have happened soon after construction. This room would have been well lit with three sash windows, and has moulded cornicing and picture rails, but there is no evidence of heating in the form of a fireplace. Room 31 to the east also has a large sash window, and the same applied decorative mouldings, but again shows no evidence of heating.

At the west end of corridor 29 are three large bedrooms 35-37. All three contain small fireplaces with ornate surrounds, although the polished steel surround in Room 35 (Plate 82) is probably a later replacement. All also have moulded cornices, picture rails and skirting, although the cornicing is of a simpler design than that seen in the reception rooms downstairs.

Room 35 has a large bay window of four sashes (Plate 81), while Room 36 contains the projection of the south-west ‘tower’ and the corner bay window of five sashes identical to that in Room 1 (Plate 83). Room 36 may originally have had a sash window either side of the fireplace recess, with that to the right of the fireplace replaced by a later fire exit (Plate 86).

Attic floor

The staircase to the attic storey rises from the east end of corridor 28, and has a balustrade of splat balusters with pierced decoration, turned newel posts and a plain hand rail (Plates 67 &

68). This leads to a landing (43a), lit by three casement windows set within a dormer. (Plate 97) Corridor 43b is T-shaped and runs the length of the attic storey. It has no cornicing or mouldings, and is lit at the west end by a triangular dormer window to the north (Plate 100), and a casement window in the east wall of the south–west section. This casement window opens onto the central valley between the roofs of the northern and southern east–west ranges, and has a set of simple ‘ladder’ steps accessing it (Plate 102).

At the east end of the corridor are two reasonably sized bedrooms (Rooms 39 and 40) both with small fireplace with art nouveau style surrounds (Plate 91). Both rooms have moulded skirting, but no cornices or picture rails, and are well lit with large casement windows.

To the west of Room 40 is toilet (41) and a small room (42) which is lit by a casement window and a skylight, but is again unheated.

At the west end of the landing there are another three rooms, 44, 45 and 46. Rooms 44 and 45 are both heated with fireplaces identical to those seen in Rooms 39 and 40, although that in Room 44 is in an awkward, deep recess between the rafters of the roof (Plate 104). They are both well lit rooms, with casement windows, and have moulded skirting with no cornicing or picture rails.

Room 46 is a smaller room, poorly lit by two small sash windows, together with a small skylight, which may also be a later insertion. Heating would probably have been provided by a fireplace between the two sash windows, but this has been removed at a later date for the insertion of a fire exit.

Cellars

There are extensive cellars under the Phase I house (see Figure 2). The entrance to the cellar was via an external door in the north elevation, and there was probably a second internal access under the main staircase. All the rooms have exposed bricks walls and brick floors.

Immediately to the right (west) of the entrance, Room 50 contains a small opening in the north wall, which has wooden doors. This appears to have been a small hatch (Plate 109).

To the left (east) of the entrance are a series of three rooms, 46, 47 and 48. Room 48 has cellar light in the north wall which has been blocked by the later extension. It also contains two brick built ‘tubs’ (Plate 110) in the south–east corner of the room. Rooms 47 and 48 are both plain rooms with no external light or remaining features.

These three rooms are all accessed from Room 51, an open room into which the entrance leads (Plate 112). This has a large recess in the west wall, with a second recess above it. At the south–west corner of the room is a narrow room with an arched recess at the end, and a sloping ceiling indicating where a second staircase accessed the cellars from inside the house (Plate 113).

Steps lead from the north–west corner of Room 51 into corridor 54, a doglegged, barrel-vaulted corridor running generally east–west. Room 53 of the south side of this corridor at its east end is a small barrel vaulted room, with no natural light. There is a small arched recess in the west wall (Plate 114). When constructed this room would have been open to the corridor, with two pillars supporting the north side of the ceiling. The spaces between these pillars were blocked up at a later date.

Opposite this room, on the north side of the corridor is a light well, covered with an iron grating. West of the dog-leg, the corridor probably opened out into a larger room, but a breeze-block wall has recently created a boiler room on the north side of the corridor which was not accessible (Plate 115).

At the west end of the corridor is the lower entrance for the 'dumb-waiter' seen on the ground floor in room 13 and 19. Beyond this the corridor terminates with a small arched opening in the south, west and north walls leading to further extensive areas under the front of the house. Due to health and safety considerations these were not investigated, but the southern rooms would contain the second staircase directly accessing the ground floor of the house.

Other buildings

The folly, constructed to the north – east of the house is also of Phase I date. Access to this structure was not possible, and the inside was not inspected, and there was thick vegetative growth around much of the west and north sides. This is an octagonal, two-storey structure with a angled, steeple roof, topped by an ornate wrought iron weather-vane (Plates 129 & 130). Access is through a first floor door, reached by a set of iron steps, and on this floor there appear to be a number of narrow slit, windows blocked at a later date. On the ground floor, there is at least one larger opening, headed by a segmental arch, which has also been blocked. A chimneystack is visible on the north elevation, indicating the presence of fireplaces inside.

The lych gate is probably also of this date, with the brickwork of the low wall matching that of the house. The gate is a timber-framed structure, with a tiled roof (Plates 131 & 132). It accesses the garden from the south, and running east and then north from this is a wrought iron fence, which is probably also Phase I.

Phase II Early 20th century onwards.

After the first phase of construction, few minor alterations appear to have been made to the internal layout of the house, and in many cases little change made to the appearance of the rooms.

On the ground floor, a small room was inserted into the north–east corner of Room 2. Room 3 was tiled and a belfast sink was plumbed into the north-west corner (Plates 26 & 27). Room 5 was subdivided, creating Room 8, and a doorway inserted into the west wall giving access from Room 4a. The westernmost window of Room 5 was replaced with a metal framed casement window, and the room as a whole modernised, with cornicing and picture rails removed (Plates 35 & 36).

The westernmost wall of Room 9 was moved, to create a larger room, and Rooms 8 and 9 were converted into cloakrooms. The style of the majority of these changes suggests a date of the 1960s or 1970s, but the modernising of Room 5 may be later.

The western staircase (38), which previously had an open balustrade, was walled in, accessed by modern doors at the top and bottom.

In Room 6, the probable fireplace in the south wall was removed, and a double fire door inserted. To the east of this a conservatory (Room 7) was built against the east facing elevation of the east–west range. This has a clear glass, lean-to roof extending over the bay

window of Room 6, flattening off to a flat, roof constructed of RSJ's, with wooden boards between and externally lined with felt. The south elevation consists of a low brick wall with a series of three large windows running the entire of its length (Plate 41). The partition wall between Rooms 4b and 7 is thin in comparison to the other external walls of the house, suggesting that it was always an internal wall and that the current conservatory replaced an existing structure in this position. It is unlikely that the canted bay window of Room 6 was enclosed in the first phase of construction, but the original lay-out of this area is difficult to reconstruct.

To the east of the conservatory a single storey extension was built providing a new entrance and including a passage (17) leading to corridor 16, and a new room (18).

The construction of the conservatory would almost certainly have taken place while the building was still in use as a private residence (i.e. before 1946) although the roof may be a later replacement. The small extension was constructed at some time in the later 20th century, probably within the 1970s or 1980s.

The main addition at ground floor level was the large extension built at the east end of the house (Plates 125-128). In order to access this, a wall was inserted into the ballroom (20) to create an east–west corridor along the south end of the room.

The eastern extension consists of 10 new rooms (see Figure 2) .A corridor (57) led into a large central area (58) around which the rooms were arranged (Plate 118). This has moulded skirting and a dado rail.

Room 56 can be seen from the remaining fittings to have functioned as a kitchen, with tiling on the walls, and some stainless steel fittings remaining (Plate 116). There is a large metal framed window of nine panes in the west wall, and to the east an open archway accesses a servery area with a shuttered serving hatch in the east wall (Plate 117).

To the south of the kitchen, Room 59 has unplastered, painted brick walls with plain skirting. In the west wall are three round-headed, metal framed windows which extend to ceiling height (Plate 119). There is a 4th window, now blocked, in the east wall.

Room 60 appears to have been constructed as one large room with Room 58, the dividing wall being a very thin partition wall, and the applied mouldings seen in Room 58 extend into this room. In the south-east corner is a very modern uPVC lean-to (Plate 120).

Rooms 61 and 62 were also constructed as one room, with a very thin partition wall now dividing them (Plates 121 & 122). They both have large windows in the north walls that are wooden framed with 8 lights each. Room 61 is also lit by skylights. The walls are plastered with plain skirting, and have no further architectural details.

Room 64 is a small passage containing a large cupboard, and giving access to Rooms 63 and 65. Room 63 to the east is a small room, with a mezzanine floor, to which there is no apparent access (Plate 123). Room 65, however, is a large hall lit by eight large skylights (Plate 124).

This extension appears to date to the same time that the small extension on the south side of the building was constructed, i.e. the later half of the 20th century. Minor alterations such as

the division of Rooms 58 and 60, and Rooms 60 and 61, and the construction of the uPVC conservatory, have taken place more recently, probably within the last 20 years.

On the first floor fewer alterations have been made. Room 26 was sub-divided to form another cloakroom, and a small passage area accessing Rooms 25 and 26. Further to the west Room 33 was sub-divided to form Room 32, creating a small cloakroom.

As part of the stairway enclosure, landing 29, previously open, was also enclosed, with the north end of this corridor also turned into a separate room (34) by the insertion of a wall. It would have been at this time that the door between Rooms 34 and 30 was blocked.

A fire escape was constructed against the south external elevation of the house, and fire exits inserted into the south walls of rooms 37 and 46. Virtually no further alteration has appeared to take place in the attic storey.

Again all these changes appear to have taken place within the early part of the later half of the 20th century, mainly in the 1960s and 1970s.

7 Discussion

Westhill House, Hagley Road was built around the turn of the century as a large, private residence. The architectural style is typically Edwardian, with its red brick elevations with decorative yellow bands, stone surrounds for the doors and windows on the west elevation, cupola roof with decorative finial and understated use of classical motifs. In the traceried windows containing stained glass decoration, a use of the Gothic style is also evident.

The ground floor space is neatly arranged, with the entrance into a large lobby or sitting hall, in turn leading into a central corridor of which the other main reception rooms are arranged. Room 1 is a drawing room, while Room 6 is probably a dining room or could be study/library. The use of Room 5 is unclear due to later alterations. At the east end of this corridor were gathered the utility rooms and tradesman's entrance, beyond which was the largest reception room, possibly used as a ballroom, and for large dinners and functions, hence its proximity to the kitchen quarters.

The first floor housed the higher status sleeping quarters for the family, with the two unheated rooms probably being bathrooms. Above, the attic storey would have provided servants' quarters.

The status of the rooms of the house can be determined from the level of decoration. The reception rooms on the ground floor, and main bedrooms on the first floor have a very high level of decoration in the form of ornate fireplaces, elaborate cornicing, and in the public areas, ornate windows including stained glass panes. The pinnacle of the decoration can be seen in the large function room at the rear end of the building, with its plastered ceiling, ornate fireplace and large windows.

It is noticeable that the bedrooms at the rear (east end) of the house have less ornate fireplaces, while those of the attic storey are less decorative again. The attic bedrooms are plain in terms of moulded cornices and picture rails, but the status of the house is further shown that the servants' quarters are still very comfortably furnished.

The house ceased to be a private residence at the end of the 1940s or 1950s. Little alteration appears to have taken place at this time in order to convert the building into a children's home. The building later passed to Westhill College, and it was probably from this point that the majority of the Phase II work took place.

8 Acknowledgements

Marches Archaeology was commissioned by Kendrick Homes, and in particular David Emery of this company is acknowledged for his co-operation.

9 References

Published references

Curl, J S. 1992. *Encyclopaedia of Architectural Terms*

Fellows, R. 1995. *Edwardian Architecture; Style and Technology*

Unpublished references

Dudley Metropolitan Borough Council. *Brief for Archaeological Building Recording /Ornamental Audit*

10 Archive

The site code is HRS 04a The archive consists of:

- 28 photo record sheets
- 14 films of black and white photographic negatives
- 14 films of colour photographic transparencies

The archive is currently held by Marches Archaeology awaiting transfer to Wednesbury Museum.

11 Appendix I: Ornamental audit and photographic survey

South elevation	
Walls	Red brick in English Garden bond. Red tile cladding on eastern section of elevation.
Roof	Red tile roof with regular bands of straight and curved edged tiles. Plain ridge tiles, and decorative ball finials. Decorative timber barge boards over gables, with bands of moulding including billet decoration.
Window	All windows of ground and first floor covered by shuttering. On both storeys the lintels are picked out with yellow stone, with the cills formed of yellow tiles.
Door	Only one original doorway, which is concealed by dense growth of ivy.
Chimney	Four chimneys, rectangular in plan but with three bands of brick moulding with a series of regular triangular projections along each side. Clay chimney pots with bands of bead moulding and strigilated decoration.
String-course	Moulded string course at ground floor level in terracotta. Second narrow moulded string-course in yellow brick, immediately under eaves.
Plinth	Narrow plinth at base of wall with simple moulding forming upper edge.
Other	Cast iron fire-escape at western end of main range. Has plain supports with cross-bracing and plain railings. Of mid 20 th century date.



Plate 1: Rear bays of house from the south



Plate 2: Example of chimney



Plate 3: Example of decorated chimney pots



Plate 4: Southern east-west range of house from the south-east.



Plate 5: Southern east-west range of house from the south-west.

South west tower	
Walls	Red brick in English Garden bond.
Roof	Faceted cupola roof, octagonal in plan. Red tile roof with regular bands of straight and curved edged tiles. Toped by decorative wrought iron finial with scrolling and spiral decoration on a lead flashing base.
Window	All windows of ground and first floor covered by shuttering. Bands of yellow stone forming the lintels are continuous around the tower, as are the bands of yellow tiles forming the cills. Yellow stones are laid with joggled vertical joints.
Door	None
Chimney	None.
String-course	Moulded string-course in terracotta is immediately over lower lintel band. Narrow moulded string-course in yellow brick, immediately under eaves forming top of upper lintel band.
Plinth	Narrow plinth at base of wall with simple moulding forming upper edge.
Other	



Plate 6: South-west tower from south



Plate 7: Detail of wrought iron finial

West elevation	
Walls	Red brick in stretcher bond, with bands of yellow stone and tile at level of window lintels and cills.
Roof	Red tile roof with regular bands of straight and fish scale tiles. Decorative timber barge boards over gables and dormer windows, with bands of moulding including decoration. Ball finials.
Window	<p>All windows of ground and first floor covered by shuttering. All window lintels are of yellow stone with joggled joints, and have yellow tile cills.</p> <p>Ground floor window is topped by an open scroll pediment with a background of leaf decoration, supported on two scrolled corbels with fluted and ribbed decoration.</p> <p>First floor window, has triangular pediment with central panel of acanthus leaf decoration, supported on two scrolled corbels with fluted and ribbed decoration.</p> <p>Ground floor bay window to north has plain stone mullions of yellow stone with straight joints.</p> <p>First floor bay window to north has plain stone mullions of yellow stone with straight joints.</p>
Door	Door is covered by shuttering. Door surround of yellow stone.
Chimney	None
String-course	Moulded string-course in terracotta is immediately over lower lintel band. Narrow moulded string-course in yellow brick, immediately under eaves forming top of upper lintel band.
Plinth	Narrow plinth at base of wall with simple moulding forming upper edge.
Other	<p>On gable end wall forming northern part of elevation, the brick courses between the lower string-course and upper band of yellow tiles are terminated in yellow stone quoins with scrolled decoration.</p> <p>Two large scrolled, wooden brackets support the overhang of the attic storey from the line of the main wall. There are vertical wooden struts either side of the attic storey window, with raking struts above it, creating an effect of timber framing</p>



Plate 8: Main house from west



Plates 9 & 10: Pediments over ground and first floor windows



Plate 11: Detail of decorative bargeboards as seen on south, west and north elevations

North elevation	
Walls	Red brick in stretcher bond, with single band of yellow tile at first floor level.
Roof	Red tile roof with regular bands of straight and fish scale tiles. Decorative timber barge boards over gables and dormer windows, with bands of decorative moulding. Ball finials.
Window	<p>All windows of ground floor covered by shuttering.</p> <p>Oriel window at ground floor level with moulded terracotta forming the ornate supporting corbel decorated with ovolo moulding.</p> <p>All other windows have segmental arch head formed of gauged brickwork, with ovolo moulding along the lower edge. Chamfered edges to openings. Cills of yellow tiles.</p> <p>First floor window over oriel is formed of three lights, with a larger central section having a lower cyma-headed pane of glass, with two mouchettes above, while the smaller, side sections have rounded arched upper segments over rectangular lower panes. All the upper panes of glass are leaded with patterns of circles and arches with stylised flowers, and contain coloured glass.</p> <p>Triangular dormer window over.</p>
Door	Door to cellar
Chimney	Chimneys, rectangular in plan but with three bands of brick moulding with a series of regular triangular projections along each side. Clay chimney pots with bands of bead moulding and strigilated decoration.
String-course	Moulded string-course in terracotta is on chimney stack at west end of elevation only. Narrow moulded string-course in yellow brick, immediately under eaves.
Plinth	Narrow plinth at base of wall with simple moulding forming upper edge.
Other	<p>On gable end wall approximately half way along the elevation, there are vertical wooden struts either side of the attic storey window, with more struts above it, creating an effect of timber framing.</p> <p>Small projection at first floor level to the east of this gable. This is tile clad, and supported by two moulded, wooden brackets.</p> <p>Low wall surrounding steps to cellar entrance. Red brick also in English Garden bond, stepped, with a yellow terracotta, moulded coping.</p>



Plate 12: West end of north elevation



Plate 13: Detail of first floor window



Plate 14: Eastern end of northern east-west range

Room 1: Reception	
Fireplace	Fireplace with large ornate chimney-piece. Grate not visible. Purple veined grey marble slab hearth and hearth surround. Timber surround consisting of fielded panels with ovolo moulding to either side of grate, flanked to either side by Corinthian style pilasters sporting acanthus leaf decoration over a scrolled foot. Frieze with a central lion's head and scrolling foliage decoration, flanked on either side by fluted decoration. Deep plinth of multiple ovolo and cyma moulding. Mantel-piece with roll and cyma moulded edge, over which is a shield shaped mirror, flanked by thin fluted columns with roll-moulded bases and capitals including egg and dart decoration. These columns are flanked by smaller rectangular mirrors with square panels with bolection mouldings above them. The whole is topped with a cornice decorated with dentil decoration and ovolo and cyma moulding, with a central scrolled pediment. The whole is flanked by a pair of fluted columns supported by a panelled pedestal and moulded plinth. Over this combined fire surround and mantel mirror is a further stage of chimney-piece consisting of a wide arch of small square columns with a cornice over, and spandrels with pierced fan decoration. Either side are further square panels with bolection moulding, and highly decorative iron air-vent covers sporting intricate designs of geometric tracery.
Cornicing	Deep cornice of two bands of ovolo moulding with fillets.
Skirting	Skirting with bands of ovolo and half round moulding with fillets along its upper edge.
Picture rail	Picture rail with cavetto and half round mouldings.
Window	Six sash windows. Wooden frames with two large panes of glass, and metal clasps with concentric circle decoration. Moulded surround and cill, both with wave mouldings.
Ceiling	A third band of ovolo mouldings runs parallel to the cornice, slightly in from the edge of the ceiling to create a further band of decoration.
Door	Two modern firedoors with moulded door frames of wave and ovolo mouldings
Other	Either side of the elaborate chimney piece, are alcoves dressed with timber surrounds to match the chimney piece. In each case this consists of a fluted column and square pedestal to match the outer column of the chimney-piece supporting a curved cornice with dentil decoration. This supports an open arch with pierced fan decoration spandrels. Blind window in each alcove with deep moulded cill.



Plate 15: Fireplace and chimney-piece on east wall of Room 1



Plate 16: Alcove decoration in Room 1

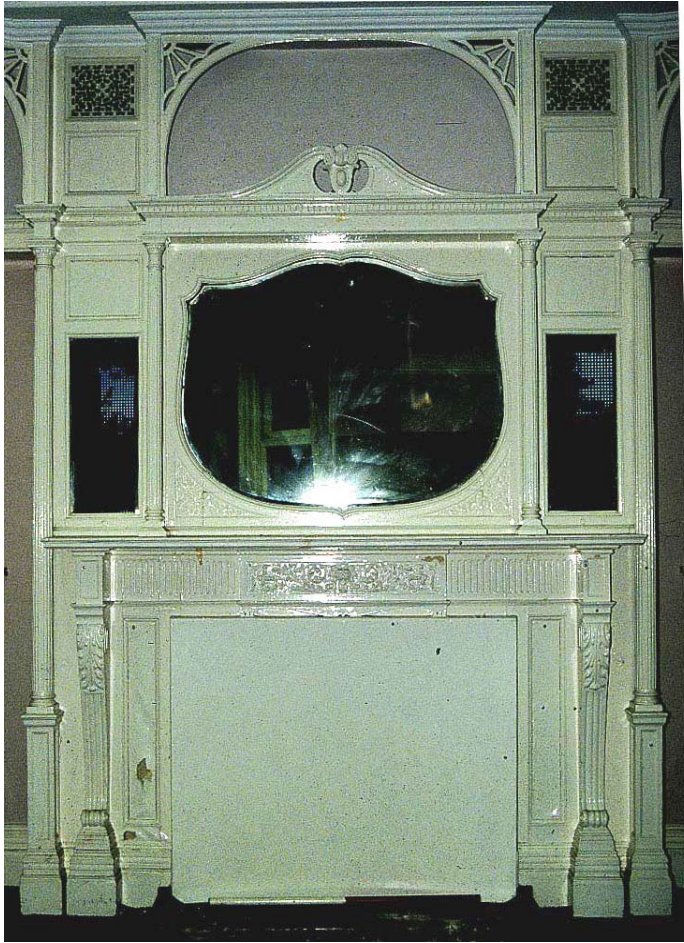


Plate 17: Fireplace in Room 1



Plate 18: Detail of fireplace decoration



Plate 19: Fireplace in Room 1



Plate 20: Bay window in south-west corner of Room 1



Plate 21: Detail of window mouldings



Plate 22: Detail of window clasp

Room 2: Reception	
Fireplace	Fireplace with grate removed. Brick fireback and cheeks framed by a surround consisting of a thin inner frame of timber with simple roll moulding along the inner and outer edge, a splayed surround of dark green, rectangular glazed tiles, with a thin outer frame of grey marble. Surrounded by second timber frame with cyma and bead moulding along the inner edge, flanked on either side by a fluted pilaster on a stepped square plinth. Over this is a simple frieze of a horizontal panel with cyma and bead moulding, set forward of which is a shallow arch edged with the same moulding, supported at each end by a small console. This arch is flanked by small vertical panels with moulded edges. This supports a mantel with a highly moulded under edge of multiple cyma moulding. Above the mantelpiece is a rectangular mirror framed with reverse cyma and bead moulding. This is flanked to either side by a raised and fielded panel with the same mouldings, which are in turn flanked by fluted columns, with roll moulding above and below the fluting. These are on square stepped plinths and have capitals with egg and dart decoration. These support a cornice with reverse cyma mouldings. White veined grey marble slab hearth and hearth surround. Two pierced iron air vents, identical to those in Room 1, in wall over fireplace.
Cornicing	Cornicing of two deep, parallel bands of ovolo mouldings with fillets. (see Plate 24). On north, west and south walls only.
Skirting	Skirting with bands of ovolo and half round moulding along the top..
Picture rail	Picture rail with half roll, and ovolo mouldings.
Window	Two sash windows. Wooden frames with two large panes of glass, and metal clasps with concentric circle decoration. Moulded surround of wave moulding which extends down to the floor. No cills. Fielded panels below each.
Ceiling	A further two bands of moulding run parallel to the cornicing, connected at corners by further bands of moulding to create a pattern. Moulding is again of ovolo and half rounds with fillets.
Door	Internal doors are modern fire doors in moulded door frames. External door in west wall has six fielded panels with ovolo mouldings. Fixed panel to right of the door has a further three fielded panels.
Other	



Plate 23: West entrance into Room 2



Plate 24: Pattern of cornicing in Room 2



Plate 25: Fireplace in Room 2

Room 3: Reception	
Fireplace	None.
Cornicing	Cornicing of two deep, parallel bands of ovolo mouldings with fillets. On east and north wall only.
Skirting	None.
Picture rail	None.
Window	Sash window with moulded surround as in Room 2, and a simple cill. Two panes of plain glass with metal clasp with concentric circle decoration.
Ceiling	A further two bands of moulding run parallel to the cornicing, connected at corners by further bands of moulding to create a pattern. Moulding is again of ovolo and half rounds with fillets.
Door	Modern fire door with frame of multiple ovolo moulding.
Other	Walls of room tiled to half height. Belfast sink in north west corner. Tiled floor.



Plate 26: Room 3 looking north



Plate 27: Room 3 looking north

Room 4a: Lobby	
Fireplace	None.
Cornicing	Deep cornice of two bands of ovolo moulding with fillets as seen in Room 1.
Skirting	Two types. Skirting with bands of ovolo, cavatto and half round moulding along top edge present on north wall, in south-west corner, and part of east wall. Rest of area has more modern plain skirting with no moulding.
Picture rail	Picture rail with band of half round moulding along top edge and two further bands of bead moulding.
Window	Large oriel style window in north wall. Segmental headed arched opening edged with ovolo moulding and a plain wooden cill. Window is formed of three bays, with a larger central bay having a lower cyma-headed pane of glass, with two mouchettes above, while the smaller, side bays have rounded arched upper segments. All the upper panes of glass are leaded with patterns of arches and circles with stylised flowers, and contain coloured glass.
Ceiling	Plain plastered.
Door	Doors to Rooms 1, 2 and 3 have moulded frames, but that to room 5 is thinner and completely plain. All doors are modern fire doors.
Other	



Plate 28: Oriel window in north wall of corridor 4a



Plate 29: Detail of oriel window

Room 4b: Corridor	
Fireplace	None.
Cornicing	Deep cornice of two bands of ovolo moulding with fillets as in Room 1. None in eastern half.
Skirting	Majority of skirting is moulded, with half round and ovolo moulding along the upper edge. Plain skirting along south wall of corridor where staircase has been walled off, and in eastern half of corridor.
Picture rail	Picture rail as in Room 4a, with upper bands of half roll and bead moulding. None in eastern half.
Window	Blocked window in south wall, eastern half of corridor. Sash window with moulded surround and cill with multiple ovolo mouldings on underside.
Ceiling	Changes in ceiling level are framed by cornicing.
Doors	All doors are modern fire doors. Majority of frames are square headed with moulded surrounds as seen in previous rooms. Doorway to Room 6 has a polygonal head, with a moulded surround of half round and ovolo moulding. This allows the moulding to tie in with the base of the staircase doorway through to Room 7 is square headed with an arched fanlight above. The fanlight contains coloured glass set in a leaded panes creating a pattern of circles, arches and flowers (Plate 42). The moulded door surround is arched to accommodate the fanlight.
Other	<p>Arched entrance between 4a and 4b is decorated with a plaster arch. The underside of the arch is plain, with both faces decorated with bead and ovolo mouldings. Terminates in an urn shaped corbel, heavily carved, including fluting and ribbing, a double cyma decoration and with a scrolled pediment. Only northern half seen within this room, with the southern half of the arch within the stairwell.</p> <p>Staircase is now blocked off, but various elements of it are visible within the south wall of the corridor. Three turned pendants are visible, together with the rounded end of the bottom step and the moulded edges of the newel post. Under the staircase, at the east end is a very decorative moulded post, supporting one side of a wooden, round headed arch with pierced decoration above and a central carved keyblock.</p> <p>Semi-circular, round-headed niche, with simple chamfered edge, adjacent to the door to room 7 (to the west).</p>



Plate 30: Corridor 4b from west



Plates 31 and 32: Northern half of plaster arch spanning corridor 4b and staircase 38



Plate 33 Blocked entrance to stairs and doorway to Room 6



Plate 34: Second entrance and niche in corridor to east of Room 6

Room 5: Reception	
Fireplace	None.
Cornicing	None.
Skirting	Moulded skirting with bands of ovolo moulding and fillets along the upper edge.
Picture rail	None.
Window	Two windows. Eastern window is a two-paned, wooden sash window with a moulded surround as seen in Rooms 1 and 2, with cyma moulding. The western window has a metal frame, and is divided horizontally into three lights. Both windows have a cills with deeply moulded undersides.
Ceiling	Plain.
Door	Modern door with plain wooden doorframe.
Other	

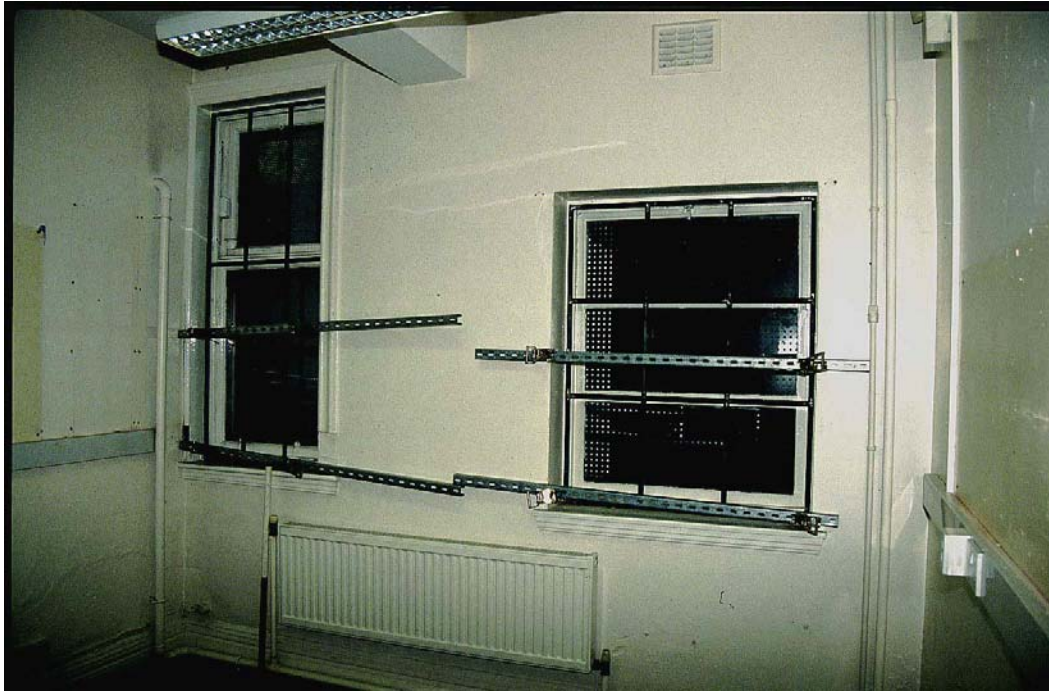


Plate 35: North wall of Room 5



Plate 36: Room 5 from north-east corner

Room 6: Reception	
Fireplace	None.
Cornicing	Deep cornicing of two deep, parallel bands of ovolo moulding with fillets.
Skirting	None.
Picture rail	Picture rail with cavetto and half round mouldings as in Room 1.
Window	<p>Two small wooden sash windows in south wall, with moulded surrounds and cill with deep underside with a wide band of ovolo moulding. Both of two panes sashes with metal clasps of concentric circle decoration.</p> <p>Large bay window in east wall - three wooden sashes with clasps of concentric circle decoration. Moulded surround extends down to the floor, enclosing a sunken panel under each flanking window and two beneath the central window. Bay window framed by large four-centred timber arch, which has sunken panels on its underside and bands of cyma and bead moulding on its faces. Central keyblock with fluted decoration and pyramidal faceting. Arch rests on a pair of timber columns/pilasters at each end, which have fluted decoration on the shaft, plinths with half round and hollow moulding, and capitals with egg and dart decoration.</p>
Ceiling	Plastered coffered ceiling, the square panels formed by lines of half round and ovolo mouldings.
Door	<p>Polygonal headed doorway from corridor 4b has a square headed, moulded surround with a modern fire door.</p> <p>Double doors in south wall are also modern firedoors. Set in much larger recess with ornate wooden surround. Fluted columns with moulded plinths and capitals with egg and dart decoration (corner eggs carved with foliate decoration) support a thin architrave of cyma and ovolo moulding, a wide frieze decorated with a geometric design in relief, and a narrow cornice again of cyma and ovolo mouldings. The reveal linings are panelled.</p>
Other	The room has panelling to a height of approximately 75cm on all walls. The rectangular panels are sunk, and framed with bead and ovolo moulding. The top of the panelling has a band of bead and ovolo moulding with a fillet.



Plate 37: Arched recess and bay window at east end of Room 5



Plate 38: West end of Room 6



Plate 39: Coffered ceiling of Room 6

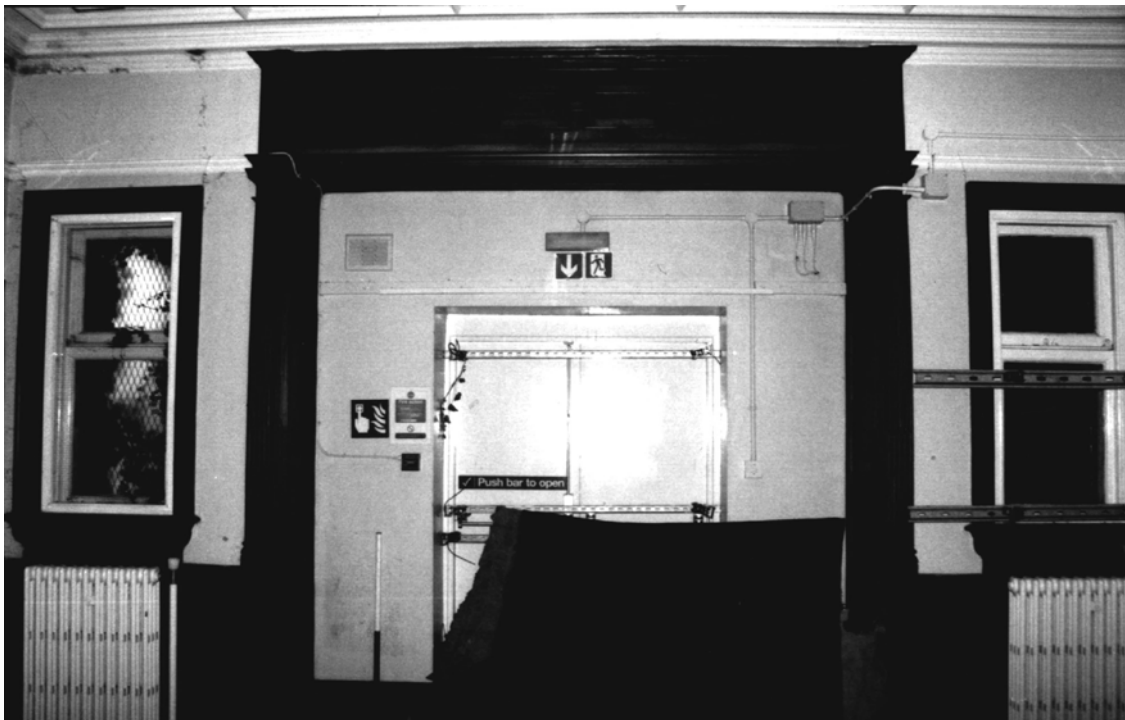


Plate 40: South wall of Room 6 with wooden surround

Room 7: Conservatory	
Fireplace	None.
Cornicing	None.
Skirting	Simple skirting with two bands of bead moulding.
Picture rail	None.
Window	<p>Three large windows along south wall. Wooden frames of seven panes, consisting of a large central pane with an arched head, two smaller, rectangular panes to each side, and four panes over. All plain glass.</p> <p>Blocked window in north wall. No surround to moulded cill, and a plain wooden frame.</p>
Ceiling	Sloping glass roof at west end of room. Main part has boxed in iron beams with sunken ceiling panels between.
Door	Door leading from 4b. Simple moulded surround with a round headed arch, and arched fanlight with leaded pattern of circles, arches and flowers in coloured glass.
Other	Moulded panelling to a height of some 0.75m on the north wall.



Plate 41: Windows in south wall of Room 7



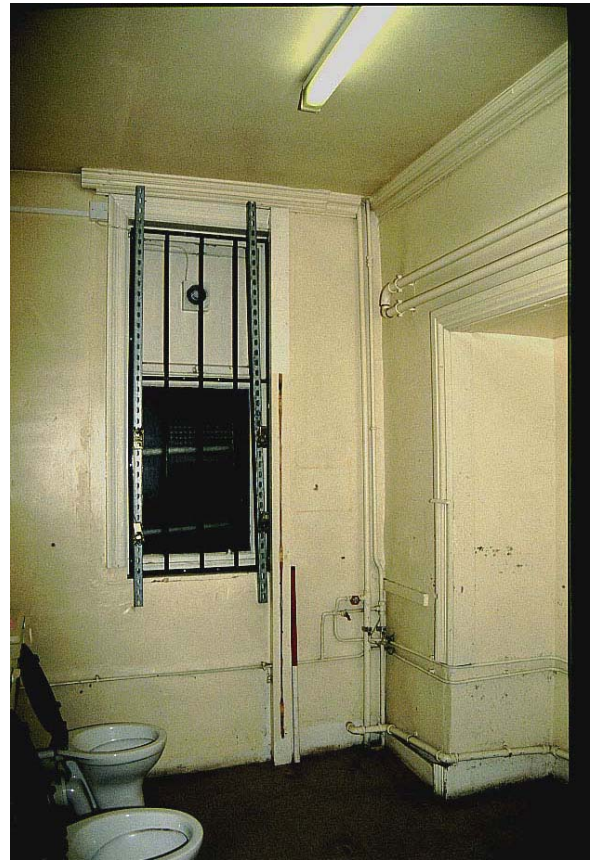
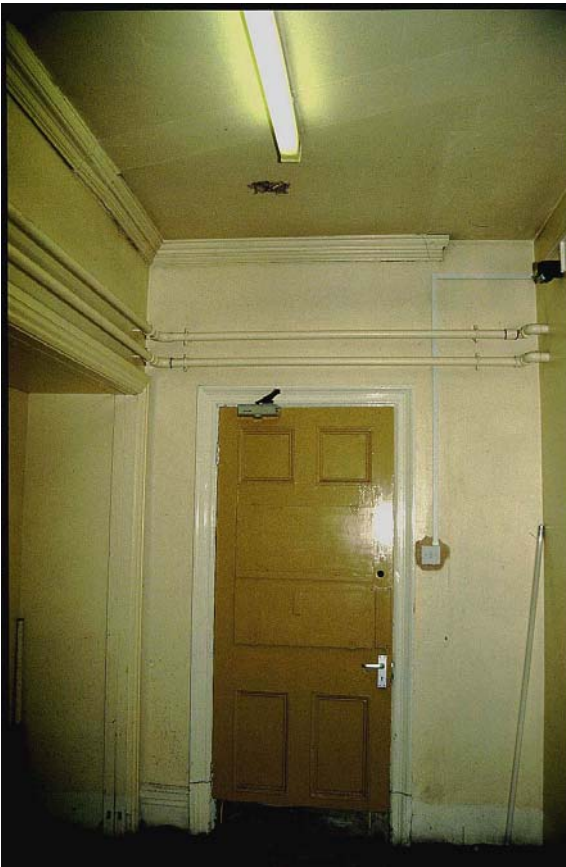
Plate 42: Second entrance to house, with decorative fanlight

Room 8: Cloakroom	
Fireplace	None.
Cornicing	Cornicing with ovolo and cyma moulding with fillet.
Skirting	Plain.
Picture rail	None.
Window	Sash window, wooden frame with two panes. Moulded surround of ovolo and wave moulding, with simple cill with half round and hollow moulding bands along its upper edge.
Ceiling	Plain.
Door	Door with six panels, framed with ovolo and bead mouldings. Moulded door surround externally in corridor, but plain surround internally.
Other	Ceramic toilet and wash basin dating to second half of 20 th century/

Room 9: Cloakroom	
Fireplace	None.
Cornicing	Deep cornice with cyma and ovolo moulding with fillet. Not present on west wall, or western ends of north and south walls.
Skirting	Majority removed. One very short section east of door with simple band of cyma moulding along the top.
Picture rail	None.
Window	Sash window with wooden frame. Two panes of plain glass with metal clasps of concentric circle decoration. Surround of ovolo and wave moulding, with a plain cill.
Ceiling	Plain.
Door	Moulded door frame of multiple ovolo mouldings, with panelled door. Has two central plain panels, with two panels above and two below that are framed with ovolo and bead mouldings.
Other	Large recess in eastern wall, with a moulded timber surround of ovolo and bead moulding. Vertical groove in inner face of surround suggests that it was originally fitted with folding doors. Recess contains two sinks of later 20 th century date. Two toilets of same date against the west wall.



Plate 43: Cloakroom 8 from south



Plates 44 & 45: Room 9 from north and south respectively, showing discontinued corning and large recess

Room 10: Room	
Fireplace	Probable blocked chimney breast, with small iron plate - possible air vent cover.
Cornicing	None.
Skirting	Plain skirting with no moulding.
Picture rail	None.
Window	Two sash window with wooden frames. Two panes of plain glass, one with metal clasp of concentric circle decoration. Surrounds of ovolo and wave moulding, with plain cills.
Ceiling	Plain.
Door	Plain door frame with no moulding, modern fire door.
Other	Walls are currently papered, but the outline of tiles can be clearly seen beneath it. All walls of room tiled up to a height of approximately 2m.

Room 11: Corridor	
Fireplace	None.
Cornicing	None.
Skirting	Plain skirting with no moulding
Picture rail	None.
Window	None.
Ceiling	Plain.
Door	Five doorways, all with plain door frames and simple doors, each with a single plain panel in the top half or modern fire doors.
Other	Walls are currently papered, but the outline of tiles can be clearly seen beneath it. All walls of room tiled up to a height of approximately 2m.



Plate 46: Room 10 from the south-east



Plate 47: Room 10 from the south

Room 12: Utility	
Fireplace	None.
Cornicing	None.
Skirting	Plain skirting with no moulding
Picture rail	None
Window	Two sash windows. Wooden frames with two panes of plain glass. Moulded surround with plain wooden cill. Third window with metal frame, divided horizontally into three panes. No surround, plain wooden cill.
Ceiling	Plain.
Door	Doorway with plain frame, and simple door with one plain panel in top half.
Other	Late 20 th century plastic air vents.

Room 13: Kitchen?	
Fireplace	None.
Cornicing	None.
Skirting	Tiles.
Picture rail	None.
Window	Large windows in north wall largely boarded over – fixed. No surround, and frame is divided horizontally into two panes.
Ceiling	Plain.
Door	Doorway with moulded door frame, and modern fire door
Other	All walls tiled to a height of approximately 2m. 'Dumb waiter' in south-east corner.



Plate 48: Room 13 showing tiling and dumb-waiter



Plate 49: Room 13 looking east

Room 14: Entrance lobby	
Fireplace	None.
Cornicing	None.
Skirting	Plain skirting, missing on east wall.
Picture rail	None.
Window	None.
Ceiling	Plain.
Door	Doorway with moulded door frame, and wooden door with two vertical, plain glass panes in the top half, and two panels with ovolo and bead moulding in the lower half. Rectangular fanlight over containing a leaded pattern including flowers of coloured glass.
Other	



Plate 50: Room 14, tradesman's entrance with panelled door and decorative light



Plate 51: Detail of decorative light over rear door

Room 15: Cloakroom	
Fireplace	None.
Cornicing	None.
Skirting	None.
Picture rail	None.
Window	Sash window with wooden frame of two panes and a long metal clasp with a spiralled end. Simple surround of cyma moulding and a plain cill.
Ceiling	Plain.
Door	Doorway with plain surround, and plain door.
Other	Ceramic toilet and basin of later 20 th century date.

Room 16: Corridor	
Fireplace	None.
Cornicing	None.
Skirting	Plain skirting with no moulding
Picture rail	None.
Window	None.
Ceiling	Plain.
Door	Doorway with plain surround, and modern fire door leading to north and south. In east wall is an entrance to stairs. This is a arched opening, with a relatively simple surround of ovolo moulding.
Other	

(Rooms 17 & 18 are modern)



Plate 52: Room 15 from south



Plate 53: Archway from corridor 16 to landing 19

Room 19: Half landing and stairs	
Fireplace	None
Cornicing	None.
Skirting	Skirting with half round an hollow moulding along its top edge.
Picture rail	None.
Window	The bottom section of three blocked windows can be seen in the top of the south wall. Have no surrounds, but have cills with bands of cyma and ovolo moulding on their underside.
Ceiling	Plain.
Door	Arched opening at base of stairs to Room 16 - arched opening, with a relatively simple surround of ovolo moulding. Large square-headed, double doorway leading east, with plain surround and modern fire doors.
Other	<p>Shouldered arch, (with the shoulders having an cyma profile to mirror the lower entrance) spans the width of the landing. Has same simple ovolo moulding as a chamfer.</p> <p>Steps from ground floor up to half landing, are of stone. Stairs from half landing up to first floor have modern non-slip covering with metal edges. The newel post is faceted, with some carved foliage decoration and a faceted finial. The turned banisters have a twisted shaft, with half round moulding above and below, and a square base and top. The handrail is carved with bead and cyma moulding.</p> <p>The landing floor consists of a mosaic. This has a grey background with a black and a red border. Across the main area of the floor is a pattern of black crosses on a white background, with an encircled anthemion in each corner.</p>



Plate 54: Mosaic floor on half landing 19



Plate 55: Staircase from half landing 19

Room 20 & 21: Ballroom with modern inserted corridor	
Fireplace	Fireplace with grate missing. Fixed iron canopy with art nouveau decoration, flanked by curved iron panels with margents of bellflower decoration. Framed by stone surround of pink veined white marble with four centred arch carved with cyma reversa moulding. Set within larger wooden chimney-piece with plain pilasters either side, on stepped square plinths, also with reverse cyma moulding. The capitals are of the Ionic order and support vertical panels with ovolo moulding. Mantel supported by seven mutules. Central mantel mirror, with flanking panels having a motif of a flaming torch encircled by a ribboned garland. The panels are hinged and have keyholes, and presumably cover small niches or cupboards. Topped by a convex moulded cornice that includes egg and dart decoration and a central decorative key-block. Hearth of green glazed tiles with marble hearth surround.
Cornicing	Deep, ornate cornicing with bands of ovolo and cyma mouldings. Includes a band of mutules with fluted decoration, with 'tudor' roses between each mutule. The upper band of moulding is decorated with leaf and dart/palmette? style decoration.
Skirting	Plain skirting with no moulding.
Picture rail	Picture rail with ovolo and hollow mouldings, lowest band decorated with egg and dart decoration.
Window	Two large window assemblages, in north and south walls. Consist of a large central pane with an arched head, with two smaller panes over. Flanked on either side by a further window divided horizontally into three panes. All of clear glass. Across the top are four panes with leaded decoration depicting the leaves and fruit of blackberries in coloured glass. Moulded surround and wooden cill with moulded soffit.
Ceiling	Above lower cornice the walls curve in so that the ceiling area is reduced. The ceiling is decoratively plastered with second wide moulded cornice which includes an outer band of half round moulding decorated with bay leaves. Further bands of moulding are laid out in the form of an apsidal ended rectangle, with the largest half round moulding decorated with bellflowers. Four corner panels are decorated with scrolled foliage and contain air-vents covered with lattice-work covers.
Door	Large double doorways leading east and west from corridor area, both with plain surround and modern fire doors. Third door leading into Room 21
Other	Large recesses in east and west walls fronted by four centred arch with bands of ovolo moulding, the largest decorated with egg and dart decoration. There is a keyblock with ribbed decoration, and the arch is supported on two corbels with acanthus leaves. The spandrel is decorated with a ribboned

laurel wreath.



Plate 56: Room 22 from south



Plate 57: Room 22 from north

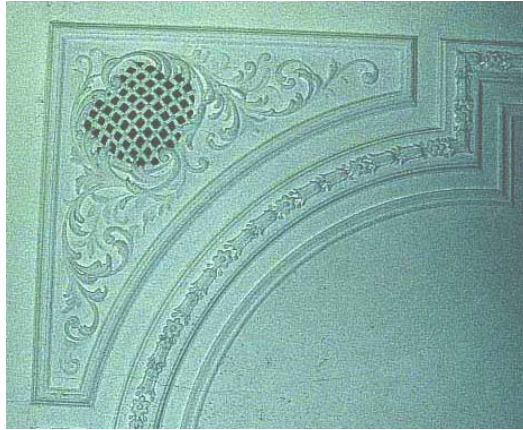


Plate 58: Detail of plaster ceiling



Plate 59: Detail of cornice



Plate 60: Detail of decoration on recess spandrels



Plate 61: Fireplace in Room 22



Plate 62: Detail of decoration on chimney-piece



Plate 63: Detail of window

Room 22: Bedroom	
Fireplace	Fireplace with grate removed. Timber surround with reverse cyma moulding around inner edge and ovolo moulding around outer edges. Mantel with wide convex underside and cyma moulding. Thin cornice of cyma moulding. No hearth visible.
Cornicing	Cornicing of two parallel bands of cyma and ovolo mouldings with fillet. One band around main ceiling of room, with another around the window recesses.
Skirting	Skirting with band of bead, hollow and fillet mouldings along the top.
Picture rail	Picture rail with bead and cyma mouldings.
Window	<p>One window of the form seen in Room 7 in south wall. Consists of a large central pane with an arched head, with two smaller, panes over. Flanked on either side by a further window divided horizontally into three panes. All of clear glass. Simple surround with bead moulding, no cill.</p> <p>Sash window in north wall. Wooden frame with two panes of plain glass and metal clasp of concentric circle design. Moulded surround as seen in ground floor windows and plain cill.</p>
Ceiling	Plain
Door	Moulded surround of ovolo and wave moulding, with a modern fire door.
Other	<p>Both windows and the door, as well as a small niche in the west wall, are set with recesses headed by segmental arches. The tops and sides of the arches are chamfered with ovolo moulding, apert from the niche which has a plain chamfer.</p> <p>Two small cupboards in east wall have panelled doors with panels framed by ovolo mouldings.</p>



Plate 64: Fireplace in Room 22

Room 23: Corridor	
Fireplace	None.
Cornicing	Cornicing of two parallel bands of cyma and ovolo mouldings with fillet. One band around main ceiling of room, with another around the window recesses.
Skirting	Skirting with band of bead, hollow and fillet mouldings along the top.
Picture rail	Picture rail with bead and cyma mouldings.
Window	Sash window in south wall. Wooden frame with two panes of plain glass and metal clasp of concentric circle design. Moulded surround as seen in ground floor windows and cill with underside of ovolo mouldings.
Ceiling	Plain.
Door	Doors from stairs and Room 22 have moulded frames of ovolo and wave moulding, with modern fire doors. Doorway between 23 and 24 has a plain frame to ceiling height, with a rounded arch forming the doorway, above which are panels of patterned glass. No door.
Other	Entrance from 23 into 28 is decorated with an ornate plaster arch similar to that in corridor 4b. The underside of the arch is plain, with both faces decorated with bead and ovolo mouldings. Terminates in urn shaped corbels, heavily carved, including fluting and ribbing, a double cyma decoration and with a scrolled pediment.



Plate 65: Corridor 23 from east, showing plaster arch



Plate 66: Timber archway in corridor 23

Room 24: Corridor	
Fireplace	None.
Cornicing	Cornicing of two parallel bands of ovolo and half round mouldings with fillet..
Skirting	Skirting with band of bead, hollow and fillet mouldings along the top.
Picture rail	Picture rail with ovolo and cyma mouldings.
Window	None.
Ceiling	Plain.
Door	<p>Doors Room 25 has moulded frames of ovolo and wave moulding, with modern fire door. Door to Room 26 has a plain frame with a modern fire door.</p> <p>Doorway between 23 and 24 has a plain frame to ceiling height, with a rounded arch forming the doorway, above which are panels of patterned glass. No door.</p>
Other	Staircase to second floor in north-east corner of room. Turned newel post with tapered shaft, square base, mouldings and ball finial. Splat banisters with pierced decoration. Plain handrail. Stairs covered with modern materials. Pendants from half landing and second floor landing are also ball variants.



Plate 67: Staircase to second floor from corridor 24



Plate 68: Detail of balustrade in corridor 24

Room 25: Bedroom	
Fireplace	None.
Cornicing	Wide cornicing of two parallel bands of ovolo and bead mouldings with fillet. On east, west and north walls only.
Skirting	Skirting with band of bead, hollow and fillet mouldings along the top.
Picture rail	Picture rail with ovolo and cyma mouldings.
Window	Sash window in east and west. Wooden frame with two panes of plain glass and metal clasp of concentric circle design. Moulded surround as seen in ground floor windows. Cill with underside of ovolo mouldings on east window, west has plain cill.
Ceiling	Plain.
Door	Doors have moulded frames of ovolo and wave moulding, with modern fire doors.
Other	

Room 26: Cloakroom	
Fireplace	None.
Cornicing	Wide cornicing of two parallel bands of ovolo and bead mouldings with fillet. On east, west and south walls only.
Skirting	Skirting with band of bead, hollow and fillet mouldings along the top.
Picture rail	None.
Window	Sash window in east wall. Wooden frame with two panes of plain glass and metal clasp of concentric circle design. No surround. Cill with underside of ovolo mouldings.
Ceiling	Plain.
Door	Doors has plain frame, with modern fire door.
Other	



Plate 69: Room 25 from east



Plate 70: Room 26 from west

Room 27: Bedroom	
Fireplace	Fireplace with opening boarded up—grate not visible or removed. Beige tile surround framed by timber moulding including egg and dart decoration. Flanked by thin, fluted pilasters on a stepped plinth with ovolo moulding. Supports a mantel with a moulded soffit of reverse cyma and ovolo moulding. Immediately beneath the mantel is a plain panel, set forward of which are two shallow arches separated by a fluted mutule. Rectangular over mantel mirror within a frame of cyma moulding. Fluted decoration to either side, with a cornice incorporating reverse cyma moulding and dentil decoration. Tiled hearth and hearth surround
Cornicing	Single band cornicing of ovolo mouldings.
Skirting	Skirting with bands of ovolo, hollow and half-round mouldings along the top.
Picture rail	Picture rail with ovolo and cyma mouldings
Window	Window of 3 lights, central light is a sash window, the outside windows are fixed. Wooden frames, each with two panes of plain glass and metal clasp of concentric circle design on centre one. Moulded surround of ovolo and wave mouldings. Cill with underside of ovolo mouldings.
Ceiling	Plain.
Door	Door has moulded frame, with modern fire door.
Other	Recess in south-west corner has draw-stop chamfer with ovolo moulding.



Plate 71: Room 27 from north-east



Plate 72: Fireplace in Room 27

Room 28: Corridor	
Fireplace	None.
Cornicing	Cornicing with ovolo and cyma moulding in eastern half. In western half deep cornice of two bands of ovolo moulding with fillets as seen in 4b None present on south side of corridor in this half.
Skirting	Skirting with bands of ovolo, hollow and half-round mouldings along the top. Plain skirting on south side of corridor west of central doorway.
Picture rail	Picture rail with ovolo and cyma mouldings.
Window	Sash window in south wall of eastern half. Wooden frame with two panes of plain glass and metal clasp of concentric circle design. Moulded surround as seen in ground floor windows and cill with underside of ovolo mouldings.
Ceiling	Plain.
Door	Doorway between two halves has moulded frame, with no door. Also moulded frame for doorway at west end into Room 29. Doorway into staircase has plain frame with modern door.
Other	Entrance into Room 30 is decorated with an ornate plaster arch identical to that in corridor 23. The underside of the arch is plain, with both faces decorated with bead and ovolo mouldings. Terminates in urn shaped corbels, heavily carved, including fluting and ribbing, a double cyma decoration and with a scrolled pediment.

Room 29: Corridor	
Fireplace	None.
Cornicing	Deep cornice of two bands of ovolo moulding with fillets as seen in 4b
Skirting	Skirting with bands of ovolo, hollow and half-round mouldings along the top. Plain skirting on south side of corridor west of central doorway.
Picture rail	Picture rail with ovolo and cyma mouldings.
Window	None.
Ceiling	Plain.
Door	Doorways to Rooms 35, 36 and 37 have moulded frame, with modern fire doors.
Other	<p>Entrance into lobby for Room 36 is decorated with an ornate plaster arch identical to that in corridor 23. The soffit of the arch is plain, with both faces decorated with bead and ovolo mouldings. Terminates in urn shaped corbels, heavily carved, including fluting and ribbing, a double cyma decoration and with a scrolled pediment.</p> <p>Large plaster arch in east wall mirroring that seen in corridor 4b on ground floor spanning staircase. Four-centred arch with bead and ovolo moulding on face. Central keyblock with fluted decoration. No corbels.</p>



Plate 73: View along corridors 28 & 29



Plate 74: Archway spanning landing 29 and staircase 38



Plate 75: Archway from landing 29 into Room 36

Room 30: Corridor	
Fireplace	None.
Cornicing	Cornicing with ovolo and cyma moulding in eastern half. In western half deep cornice of two bands of ovolo moulding with fillets as seen in 4b
Skirting	Skirting with bands of ovolo, hollow and half-round mouldings along the top.
Picture rail	None.
Window	None.
Ceiling	Plain.
Door	Three doors, all with moulded frames. Two with panelled doors, consisting of six panels with ovolo and bead moulding, other with modern fire door
Other	Entrance into Room 30 is decorated with an ornate plaster arch identical to that in corridor 23. The underside of the arch is plain, with both faces decorated with bead and ovolo mouldings. Terminates in urn shaped corbels, heavily carved, including fluting and ribbing, a double cyma decoration and with a scrolled pediment.

Room 31: Cloakroom	
Fireplace	None.
Cornicing	Cornicing with cyma and bead moulding.
Skirting	Skirting with bands of ovolo, hollow and half-round mouldings along the top.
Picture rail	None.
Window	Sash window with wooden frame of two panes of plain glass. Moulded surround, cill with underside with ovolo moulding.
Ceiling	Plain.
Door	Door with moulded frames and panelled door, consisting of six panels with ovolo and bead moulding.
Other	Ceramic toilet and sink of later 20 th century date.



Plate 76: Corridor at west end of Room 30, with archway from Corridor 28



Plate 77: East end of Room 30

Room 32: Cloakroom	
Fireplace	None.
Cornicing	Cornicing with cyma and bead moulding.
Skirting	Skirting with bands of ovolo, hollow and half-round mouldings along the top.
Picture rail	Picture rail with ovolo and cyma mouldings.
Window	Sash window with wooden frame of two panes of plain glass. Moulded surround. Cill not visible.
Ceiling	Plain.
Door	Door with moulded frames and panelled door, consisting of six panels with ovolo and bead moulding.
Other	Ceramic toilet and sink of mid 20 th century date.

Room 33: Bedroom	
Fireplace	None.
Cornicing	Cornicing with cyma, hollow, and bead moulding.
Skirting	Plain skirting with no moulding.
Picture rail	Picture rail with ovolo and cyma mouldings.
Window	Two sash windows with wooden frames of two panes of plain glass and metal clasps with concentric circle decoration. Moulded surrounds with plain cills.
Ceiling	Plain.
Door	Door with moulded frame and modern fire door.
Other	



Plate 78: Room 31 from south

Room 34: Bedroom	
Fireplace	None.
Cornicing	Deep cornice of two bands of ovolo moulding with fillets as seen in west corridor 28.
Skirting	Skirting with bands of ovolo, hollow and half-round mouldings along the top.
Picture rail	Picture rail with ovolo and cyma mouldings.
Window	Large window mirroring that in 4a. Window is formed of three lights, with a larger central section having a lower cyma-headed pane of glass, with two mouchettes above, while the smaller, side sections have rounded arched upper segments over rectangular lower panes. All the upper panes of glass are leaded with patterns of circles and arches with stylised flowers, and contain coloured glass. Moulded surround with plain cill.
Ceiling	Plain.
Door	Modern door leading into room 29 corridor through modern partition wall. Blocked doorway in south-east corner has plain surround.
Other	



Plate 79: Window in Room 34



Plate 80: Blocked doorway in south-east corner of Room 34

Room 35: Bedroom	
Fireplace	Fireplace with grate removed, cemented fireback and cheeks. Relatively plain canopy and surround of polished steel with simple rivet decoration, framed by timber reverse cyma moulding. Plain pilaster to either side with square plinth and capital with torus and cavetto moulding. Plain frieze over with a thin cornice of reverse cyma mouldings. Topped by a mantel with a thin reverse cyma moulding along its upper edge. No hearth visible.
Cornicing	Relatively simple cyma and ovolo cornicing.
Skirting	Skirting with bands of ovolo, hollow and half-round mouldings along the top.
Picture rail	Picture rail with ovolo and cyma mouldings.
Window	Large bay window consisting of four sash windows. Wooden frames with two panes each, and metal clasps with concentric circle decoration. Moulded surrounds and cills with bands of ovolo moulding on underside. Further sash of identical form in north wall.
Ceiling	Plain.
Door	Door with moulded doorframe, and modern fire door.
Other	Air vent with metal Chinese fretwork cover.



Plate 81: Bay window in west wall of Room 35



Plate 82: Fireplace in Room 35

Room 36: Bedroom	
Fireplace	<p>Fireplace which has been blocked up, the lower half of which is obscured by demolition material. Timber chimney-piece with lower fireplace surround decorated with a band of reverse cyma and roll moulding, the horizontal line of which is stepped to accommodate a small panel. Mantel with reverse cyma and ovolo moulding supports two Ionic columns on square plinths, which in turn support a cornice with bands of reverse cyma moulding and dentil decoration. Rectangular mantel mirror in a frame of cyma moulding, flanked by two small shelves supported by block brackets with panels over.</p> <p>Edge of chimney breast has draw-stop chamfering with ovolo moulding.</p>
Cornicing	Relatively simple cyma and ovolo cornicing.
Skirting	Skirting with bands of ovolo, hollow and half-round mouldings along the top.
Picture rail	Picture rail with ovolo and cyma mouldings.
Window	<p>Large canted corner bay window consisting of five sash windows. Wooden frames with two panes each, and metal clasps with concentric circle decoration. Moulded surrounds and cills with bands of ovolo moulding on underside.</p> <p>Further sash of identical form in west.</p>
Ceiling	Plain.
Door	Doors with moulded doorframe, and modern firedoor.
Other	<p>Two air vents with metal Chinese fretwork covers in chimney breast over fireplace.</p> <p>Blind window in recess to north of fireplace has cill with ovolo mouldings on underside.</p>



Plate 83: Bay window in south-west corner of Room 36



Plates 84 & 85: Fireplace in Room 36

Room 37: Bedroom	
Fireplace	Fireplace with grate and canopy removed. Plain steel sheeting forming inner surround, framed by outer timber chimney piece the vertical sides of which are stepped. Inner surround framed by a band of double cyma moulding, with similar moulding around the whole of the outer edge of the chimney piece. Over the inner surround are two panels separated and flanked by three block brackets with fluted decoration. These support two pronounced cyma headed arches. The mantel has ovolo and cyma moulding above a band of dentil decoration. Above it is a large central panel which may originally have held a mirror, flanked by two smaller panels framed with ovolo and cyma moulding and each containing a small bracketed shelf. The cornice has double cyma moulding and a band of dentil decoration. Painted stone (?) hearth with timber hearth surround.
Cornicing	Cyma and ovolo moulded cornicing.
Skirting	Skirting with bands of ovolo, hollow and half-round mouldings along the top.
Picture rail	Picture rail with ovolo and cyma mouldings.
Window	Three sash windows. Wooden frames with two panes each, and metal clasps with concentric circle decoration. Moulded surrounds and cills with bands of ovolo moulding on soffit. Further sash of identical form in west.
Ceiling	Plain.
Door	Two doorways with moulded doorframes, and modern fire door. Doorway in south wall to fire escape. No surround, modern fire door.
Other	Air vents with metal Chinese fretwork cover in chimneybreast over fireplace. Blind window in west wall, has cill with ovolo mouldings on soffit. Edges of fireplace recess have draw-stop chamfering with ovolo moulding.



Plate 86: Room 37 from north



Plate 87: Fireplace in Room 37

Room 38: Staircase	
Fireplace	None.
Cornicing	Deep cornice of two bands of ovolo moulding with fillets as seen in Room 4b on south and east walls only.
Skirting	Skirting on south wall is moulded, with half round and ovolo moulding along the upper edge. Plain skirting on north wall, where staircase has been walled off.
Picture rail	Picture rail as in Room 4a, with upper bands of half roll and bead moulding. Only on southern wall.
Window	Corner bay window in south-east corner mirroring the decoration of the bay window in 4a. Window is formed of three bays, with a larger central bay having a lower cyma-headed pane of glass, with two 'tear-drop' shaped sections above, while the smaller, side bays have two rounded arched upper segments. All the upper panes of glass are leaded with patterns of arches and circles with stylised flowers, and contain coloured glass. Moulded surround, with cill of deep ovolo moulding.
Ceiling	Plain.
Door	Two doorways with plain doorframes, and modern firedoors.
Other	Other half of arch observed in 4a. The underside of the arch is plain, with both faces decorated with bead and ovolo mouldings. Terminates in an urn shaped corbel, heavily carved, including fluting and ribbing, a double cyma decoration and with a scrolled pediment.



Plate 88: Staircase 38 looking west



Plate 89: Corner bay window at top of staircase 38

Room 39: Bedroom	
Fireplace	Small fireplace with majority of grate removed, brick fire back and cheeks. Cast iron canopy with a scalloped edge, and decorated with a central boss surrounded by sinuous tendril design. Framed by bands of ovolo and cyma mouldings flanked by two pilasters which taper outwards towards their base to incorporate a scroll decoration, in a debased console form. Square plinths and capitals with ovolo and cyma moulding. Plain frieze, convex in profile, topped by a cornice with bands of ovolo and cyma mouldings. Simple mantel of cast iron. No hearth visible.
Cornicing	None.
Skirting	Skirting on south wall is moulded, with half round and ovolo moulding along the upper edge.
Picture rail	None.
Window	Large window with three fixed and three casement windows. Wooden frames with spiral clasps on bottom casements, and spiral clasp on upper casement. Moulded surround with plain cill.
Ceiling	Plain.
Door	Doorway with moulded surround and modern firedoor.
Other	



Plate 90: Room 39 from south



Plate 91: Fireplace in Room 39

Room 40: Bedroom	
Fireplace	Small fireplace with majority of grate removed, brick fire back and cheeks. Cast iron canopy with a scalloped edge, and decorated with a central boss surrounded by sinuous tendril design. Framed by bands of ovolo and cyma mouldings flanked by two pilasters which taper outwards towards their base to incorporate a scroll decoration, in a debased console form. Square plinths and capitals with ovolo and cyma moulding. Plain frieze, convex in profile, topped by a cornice with bands of ovolo and cyma mouldings. Simple mantel of cast iron. Quarry tile hearth.
Cornicing	None.
Skirting	Skirting is moulded, with half round and ovolo moulding along the upper edge.
Picture rail	None.
Window	Dormer window of three lights, central one fixed, other two casements. Wooden frames with spiral metal clasps and bow-footed catches. Moulded band across top of window frames, plain cill.
Ceiling	Plain.
Door	Moulded surround with modern fire door.
Other	

Room 41: Cloakroom	
Fireplace	None.
Cornicing	None.
Skirting	Plain skirting with no moulding.
Picture rail	None.
Window	Metal framed dormer window divided into two panes, centrally hinged for upper pane to open. Plain surround, cill with ovolo moulding on underside.
Ceiling	Plain.
Door	Doorway with moulded frame and modern fire door.
Other	Ceramic toilet and basin of early 20 th century date.



Plates 92 & 93: Room 40; fireplace and window



Plate 94: Room 41 from south

Room 42: Bedroom	
Fireplace	None.
Cornicing	None.
Skirting	Skirting is moulded, with half round and ovolo moulding along the upper edge.
Picture rail	None.
Window	Metal framed window with two panes. Centrally hinged for upper pane to open. No surround, but wooden cill with multiple ovolo moulding on underside.
Ceiling	Plain.
Door	Doorway with thin surround of single band of ovolo moulding, with opening light over. Modern firedoor.
Other	Skylight in ceiling – no frame or surround - one pane of plain glass set directly onto ceiling.



Plate 95: Room 42 from north



Plate 96: Room 42 from south

Room 43a: Landing	
Fireplace	None.
Cornicing	None.
Skirting	Skirting is moulded, with half round and ovolo moulding along the upper edge.
Picture rail	None.
Window	Three windows in south wall. Two casements either side of a taller fixed window. Wooden frames with plain glass, coiled clasps and bow-footed catches. Surround of a single band of ovolo moulding, plain cill.
Ceiling	Plain.
Door	Two doorways with plain doorframes, and modern firedoors. One leading to fire escape.
Other	Splat banisters around landing, similarly pierced to those on staircase. Turned newel posts as seen at base of stairs.

Room 43b: Corridor	
Fireplace	None.
Cornicing	None.
Skirting	Skirting is moulded, with half round and ovolo moulding along the upper edge.
Picture rail	None.
Window	Triangular dormer window of three lights in north wall. Central casement has pointed head, and plain metal clasp. Triangular fixed lights to either side. Simple surround of single band of ovolo moulding, plain cill. Window in east wall of south-western section of corridor. Two lights, one fixed, one casement. Plain wooden frames with modern metal clasp. Simple surround of single band of ovolo moulding, plain cill.
Ceiling	Plain.
Door	Doorways with moulded frames, all with modern fire doors.
Other	Set of fixed wooden 'ladder' steps leading to window in east wall.



Plate 97: Window on second floor land 43a



Plate 98: Detail of window clasp



Plate 99: Cupboard on landing



Plate 100: Triangular dormer in corridor 43b



Plates 101 and 102: Corridor 43b, including 'ladder' steps to window

Room 44	
Fireplace	Small fireplace with opening bricked up and canopy removed. Opening framed by bands of ovolo and cyma mouldings flanked by two pilasters that taper outwards towards their base to incorporate a scroll decoration, in a debased console form. Square plinths and capitals with ovolo and cyma moulding. Plain frieze, convex in profile, topped by a cornice with bands of ovolo and cyma mouldings. No mantel. No hearth visible.
Cornicing	None.
Skirting	Skirting is moulded, with half round and ovolo moulding along the upper edge.
Picture rail	None.
Window	Set of four windows in west wall consisting of two fixed and two casements. Wooden frames with plain glass, spiral metal clasps and plain catches with butterfly-headed screw locks. Moulded surround with plain cill.
Ceiling	Plain.
Door	Doorway with moulded frame and modern fire door.
Other	Recess for fireplace has a triangular arch head, edged at the front with a plain fillet.



Plate 103: Room 44 looking west



Plate 104: Fireplace in Room 44

Room 45	
Fireplace	Small fireplace with majority of grate removed, brick fire back and cheeks. Cast iron canopy with a scalloped edge, and decorated with a central boss surrounded by sinuous tendril design. Framed by bands of ovolo and cyma mouldings flanked by two pilasters which taper outwards towards their base to incorporate a scroll decoration, in a debased console form. Square plinths and capitals with ovolo and cyma moulding. Plain frieze, convex in profile, topped by a cornice with bands of ovolo and cyma mouldings. Simple mantel of cast iron. Quarry tile hearth.
Cornicing	None.
Skirting	Skirting is moulded, with half round and ovolo moulding along the upper edge.
Picture rail	None.
Window	Dormer set of three windows in west wall, consisting of one fixed and two casements. Wooden frames with plain glass, coiled metal clasp on left casement and spiral clasp on right. Metal catches with flat spiral decoration. Moulded surround with plain cill.
Ceiling	Plain.
Door	Doorway with moulded frame and modern fire door.
Other	



Plate 105: Room 45 looking east



Plate 106: Fireplace in Room 45

Room 46	
Fireplace	None.
Cornicing	None.
Skirting	Skirting is moulded, with half round and ovolo moulding along the upper edge.
Picture rail	None.
Window	Two sash windows at low level in south wall. Wooden frames with plain glass in upper panes and frosted glass in lower panes. Metal clasps with concentric circle decoration. Moulded surrounds with plain cills.
Ceiling	Plain.
Door	Two doorways with plain doorframes, and modern firedoors. One leading to fire escape.
Other	



Plate 107: Room 46 looking south



Plate 108: Room 46 looking north

Cellar rooms (48-55) and late 20th century extension (56- 65) are not included within the detailed ornamental audit and are covered here by the photographic survey.



Plate 109: Room 50 looking north showing hatch



Plate 110: Room 47 looking east, showing brick 'tubs'



Plate 111: Room 48 looking east



Plate 112: Room 51 looking west



Plate 113: Room 52 looking west



Plate 114: Room 53 looking west.



Plate 115: West end of corridor 53 looking west.



Plate 116: Room 57



Plate 117: Room 57



Plate 118: Room 58



Plate 119: Room 59



Plate 120: Room 60



Plate 121: Room 61



Plate 122: Room 62



Plate 123: Room 63



Plate 124: Room 65



Plate 125: 20th century extension from north-west



Plate 126: 20th century extension from east



Plate 127: 20th century extension from south east



Plate 128: 20th century extension from west

Folly	
Walls	Red brick in English Garden bond.
Roof	Facetted broach spire roof, octagonal in plan. Red tile. Topped with ornamental wrought iron weather-vane.
Window	Blocked window at ground floor level. Segmental headed arch and yellow tile cill. Bricked up at a later date with stretcher bond. Two narrow, bricked up windows on first floor.
Door	Doorway with plain wooden plank frame, wooden door with vents.
Chimney	Plain brick stack.
String-course	Moulded string course at first floor level in terracotta..
Plinth	Narrow plinth at base of wall with simple moulding forming upper edge.
Other	Cast iron steps with plain handrail leading up to door.

Lych gate	
Walls	Open timber framing on a low brick wall..
Roof	Red tile roof with straight edged tiles. Plain ridge tiles. Decorative timber barge boards over gables, with bands of moulding including billet decoration.
Door	Two opposite entrances formed by timber uprights and tie-beam, with decorative arch-braces
Plinth	Stepped plinth at base of wall.
Other	Open brackets extending from each corner post to 'wall-plate' which extends beyond the length of the rest of the structure.



Plate 129: Weather vane on folly



Plate 130: Folly from east

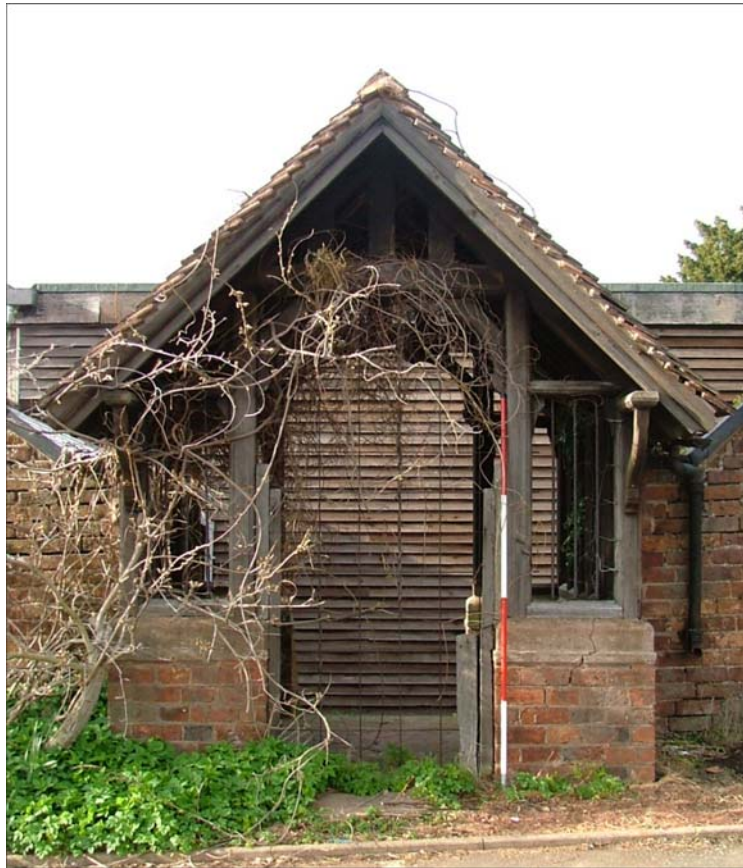


Plate 131: Lych gate from south



Plate 132: detail of lych gate



Plates 133 and 134: Decorative railings in garden



Marches Archaeology

Project Proposal for Building Recording at Westhill Centre, Hagley Road Stourbridge

Introduction

A planning application has been submitted by Kendrick Homes to the Local Planning Authority to redevelop a site at 107 Hagley Road (ref.: PO0/2406)

The site is recorded on the local Sites and Monuments Record (ref.: HBSMR 12077) as a site of archaeological interest. The Local Planning Authority's Archaeology Advisor has recommended that if the planning authority grants permission for this development a negative condition should be attached, requiring the "implementation of a programme of archaeological work in accordance with a written scheme of investigation which has been submitted by the applicant and approved by the Planning Authority".

The Local Planning Authority's Archaeology Advisor has produced a "Brief for building recording". Kendrick Homes (the client) has requested Marches Archaeology to quote for providing the archaeological services detailed in the Brief.

This project proposal is based on the Brief and will follow its stipulations, unless specified below. This proposal forms a written scheme of investigation for the archaeological works and should be read in conjunction with the Brief and its attached plan(s). Any subsequent alterations to the brief will be agreed in writing between Marches Archaeology and the Local Planning Authority's Archaeology Advisor.

Archaeological and Historical Background

The Brief summarises the interest of the site.

Scope and aims of the project

The Brief states that the archaeological recording will consist of:

- 1 preparation of a level 2/3 record, as defined in the RCHM(E) publication *Recording Historic Buildings - A Descriptive Specification*, 3rd edn.

The Institute of Field Archaeology (IFA) defines Building Investigation and Recording as “a programme of work intended to establish the character, history, dating, form and archaeological development of a specified building, or structure, or complex and its setting, including its buried components on land, inter-tidal zone or underwater”.

The purpose of Building Investigation and Recording is defined by the IFA as “to examine a specified building, structure, or complex, and its setting, in order to inform [either] the formulation of a strategy for the conservation, alteration, demolition, repair or management of a building, or structure, or complex and its setting [or] to seek a better understanding, compile a lasting record, analyse the findings/record, and then disseminate the results”.

Methodology

Building Recording

The requirements of RCHM(E) “Level 2/3” will be implemented. The record will consist of written drawn and photographic elements. Additional sketches, scale drawings, photographs and notes will be made as appropriate of significant elements which may be revealed during alterations, as well as those details which are to be removed or obscured.

It is assumed that full and free access to all areas will be available by the client. Examples of what this could include are: scaffolding with safe working platforms; clearance of vegetation from walls.

Before the project commences two full sets of any existing relevant drawings (plans, elevations, sections etc.) including the development site and any building(s) as existing and as proposed will be provided to Marches Archaeology by the client. Two copies of any amendments or revisions to such drawings and of any additional drawings will be provided as the project continues. Copies will also be provided to Marches Archaeology of any additional relevant historical, archaeological, structural or other information is held by the client.

Office work

Documentary study will be undertaken in accordance with the requirements of the Brief.

On completion of fieldwork a site archive will be prepared. The written, drawn and photographic data will be catalogued and cross-referenced and a summary produced. The artefactual and ecofactual data will be processed, catalogued and cross-referenced and summaries produced. After an initial assessment any unstratified non-diagnostic artefacts

and ecofacts and non-diagnostic samples will be discarded. Further dispersal of artefacts and ecofacts will be in line with the collection policy of the recipient repository and will be documented in the archive.

The freeholder(s) of the land to which this document relates has title to all objects (unless within the jurisdiction of the Treasure Act 1996) recovered from the land. The client shall secure the agreement of the freeholder(s) to donate the archive, together with any artefacts and ecofacts recovered during the fieldwork, to an appropriate repository. Marches Archaeology will arrange for such deposition.

Analysis will be based on the site archive.

An illustrated client report will be produced which will detail the aims, methods, and results of the project. A non-technical summary and details of the location and size of the archive will be included. Copyright of any reports is vested in Marches Archaeology.

The client will be provided with two copies of the report. Further copies will be sent to the Local Planning Authority and to the Local Planning Authority's Archaeology Advisor (one copy each). One copy will be deposited with the local Sites and Monuments Record and another with the National Archaeological Record.

If the project reveals that the quality and potential of the information resulting from the fieldwork is such that further analysis and/or formal publication is required the level of such work will be determined in discussions between the client, Marches Archaeology and the Local Planning Authority's Archaeological Advisor. Such works would be subject to a further Project Proposal which would be separately costed.

Management of the Project

Marches Archaeology recognises the Code of Conduct, Code of Approved Practice for the Regulation of Contractual Arrangements in Field Archaeology, By-Laws, Standards and other documents produced by the Institute of Field Archaeologists. The project will be managed by a Member of the Institute of Field Archaeologists.

The Safety Policy and General Risk Assessment operated by Marches Archaeology will be implemented. Copies of these documents are available on request. A risk assessment specific to this project will be carried out before commencement of fieldwork to identify any risks not noted in the General Risk Assessment. If another body is responsible for Health and Safety on the site Marches Archaeology will conform to any policy which may be in force. If costs accrue due to Health and Safety issues not made apparent to Marches Archaeology by the time of submission of this Project Proposal these costs will be additional to any costs identified in the estimate. The requirements of Health and Safety legislation are deemed to take precedence over archaeological requirements.

Appropriate insurance cover will be held throughout the project.

Local Planning Authority's Archaeology Advisor shall at any reasonable time be granted access to the site, with prior notice, for the purpose of monitoring the fieldwork.

Timetable

The timetable is not finalised at this stage. This document will be submitted for approval to the Local Planning Authority's Archaeology Advisor in advance of the commencement of fieldwork.

The report will be presented to the client within one month of the completion of the fieldwork, unless otherwise agreed. The results will be reported to the Local Planning Authority's Archaeology Advisor and the local Sites and Monuments Record within one month of presentation, unless otherwise agreed. A summary report will be submitted for publication in an appropriate medium within one year of completion of all fieldwork.

Resources

Desk based assessment	Project director	1 day
Building recording	Project director	4 days
Archive completion	Project assistant	½ day
Report text	Project director	2 days
Report illustration	Project assistant	3 days
Report collation/production	Project assistant	½ day

15th March 2004