

Playing Fields, Callander Primary School

Callander, Loch Lomond and the Trossachs National Park

Archaeological Evaluation

for

Stirling Council

June 2013



Addyman Archaeology

Building Historians & Archaeologists

a division of Simpson & Brown Architects
St Ninian's Manse Quayside Street Edinburgh EH6 6EJ
Telephone 0131 555 4678 Facsimile 0131 553 4576
admin@addyman-archaeology.co.uk www.simpsonandbrown.co.uk

Playing Fields, Callander Primary School

Callander, Loch Lomond and the Trossachs National Park

Archaeological Evaluation: June 2013

Data Structure Report

(AA 2059)

by Ross Cameron

edited by Tanja Romankiewicz

Contents

Executive Summary

1. Introduction

- i. General*
- ii. Setting*

2. Brief Historical Summary

3. Methodology

4. Results

- i. Trench 2*
- ii. Trench 3*
- iii. Trench 5*
- iv. Trench 8*
- v. Trench 10*
- vi. Trench 12*
- vii. Trench 14*
- viii. Trench 16*
- ix. Outreach work*

5. Summary and Conclusions

6. Mitigation and Recommendations

7. Acknowledgements

Bibliography

Appendices

<i>Appendix A</i>	<i>Context Register</i>
<i>Appendix B</i>	<i>Finds Register</i>
<i>Appendix C</i>	<i>Photographic Register</i>
<i>Appendix D</i>	<i>Photographic Thumbnails</i>
<i>Appendix E</i>	<i>Provisional DES entry</i>

Unless otherwise stated, all content is the copyright of Simpson & Brown *Architects* with Addyman Archaeology.

Playing Fields, Callander Primary School

Callander, Loch Lomond and the Trossachs National Park

Archaeological Evaluation: June 2013

Executive Summary

Addyman Archaeology were commissioned to complete an archaeological evaluation on the Playing Fields to the E of Callander Primary School in Callander, within Loch Lomond and the Trossachs National Park. The evaluation was completed as part of the planning process prior to the development of the site into a landscaped rugby pitch and all weather playing surface. 19 trenches were opened across the site and showed this to have undergone some degree of landscaping and alteration. No archaeological features or discoveries of any note were made.

A record of the evaluation has been deposited with the Online Access to the Index of Archaeological Investigations (OASIS) website hosted by the Archaeological Data Service (OASIS ID addymanal-153383) and with Discovery and Excavation in Scotland (DES), the annual publication of fieldwork by Archaeology Scotland.

1. Introduction

i. General

Addyman Archaeology were commissioned by Graeme Harley of WD Harley Architects on behalf of Stirling Council to undertake a programme of archaeological evaluation prior to the development of the playing fields to the rear of Callander Primary School. Through planning application 2012/0324/DET, the developer intends to landscape the site, installing a full size rugby pitch and a smaller training pitch. The new pitches will provide a home for McLaren Rugby Club while being available for school and community use.

The archaeological investigation is a condition of the planning consent and states that development cannot not begin,

'until the developer has secured the implementation of a programme of archaeological works in accordance with a written scheme of investigation (WSI) which has been submitted by the applicant, agreed by the West of Scotland Archaeology Service, and approved by the Planning Authority. Thereafter the developer shall ensure that the programme of archaeological works is fully implemented and that all recording and recovery of archaeological resources within the development site is undertaken to the satisfaction of the Planning Authority.'

Following production of a Written Scheme of Investigation, the archaeological evaluation was completed over three days from 17th – 19th June 2013 by Ross Cameron and Tanja Romankiewicz. The weather conditions for the project were ideal, with warm weather and bright sunshine. Paul Robins of WoSAS inspected the site on Tuesday 18th of June and was content with the procedures.

This report contains historic maps, reproduced by permission of the Trustees of the National Library of Scotland (NLS). To view these maps online, see <http://www.nls.uk>.

ii. Setting

The proposed development lies within the town of Callander to the S of the River Teith, centred on NN 62713 07639. The site is located to the E (rear side) of Callander Primary School and currently functions as the school playing fields and recreation area. In addition to Callander Primary School, the western periphery of the site is formed by a series of back gardens and houses comprising the Bridgend area of Callander. The southern limit of the development is formed by the Manse Lane aligned WNW-ESE. This meets a public path which runs NNE before meeting the River Teith which in turn runs along the N of the site.



Plate 1 View looking SE across the development site (Photograph 002)



Plate 2 View NW across the development site (Photograph 015)

On the whole the topography of the site is relatively flat, with various small undulations and a depressed area to the N which has been repeatedly prone to flooding. The SW and southern limits of the site are sunken from the perimeter, this indicating prior landscaping in relation to the formation of the playing fields as existing.

The underlying bedrock geology is the Teith Sandstone Formation, a sedimentary bedrock formed approximately 391-400 million years ago in the Devonian Period. The superficial geology comprises Alluvium deposits of clay, silt, sand and gravel formed 2 million years ago in the Quaternary Period. Both the bedrock and superficial geology indicates an environment previously dominated by rivers.¹

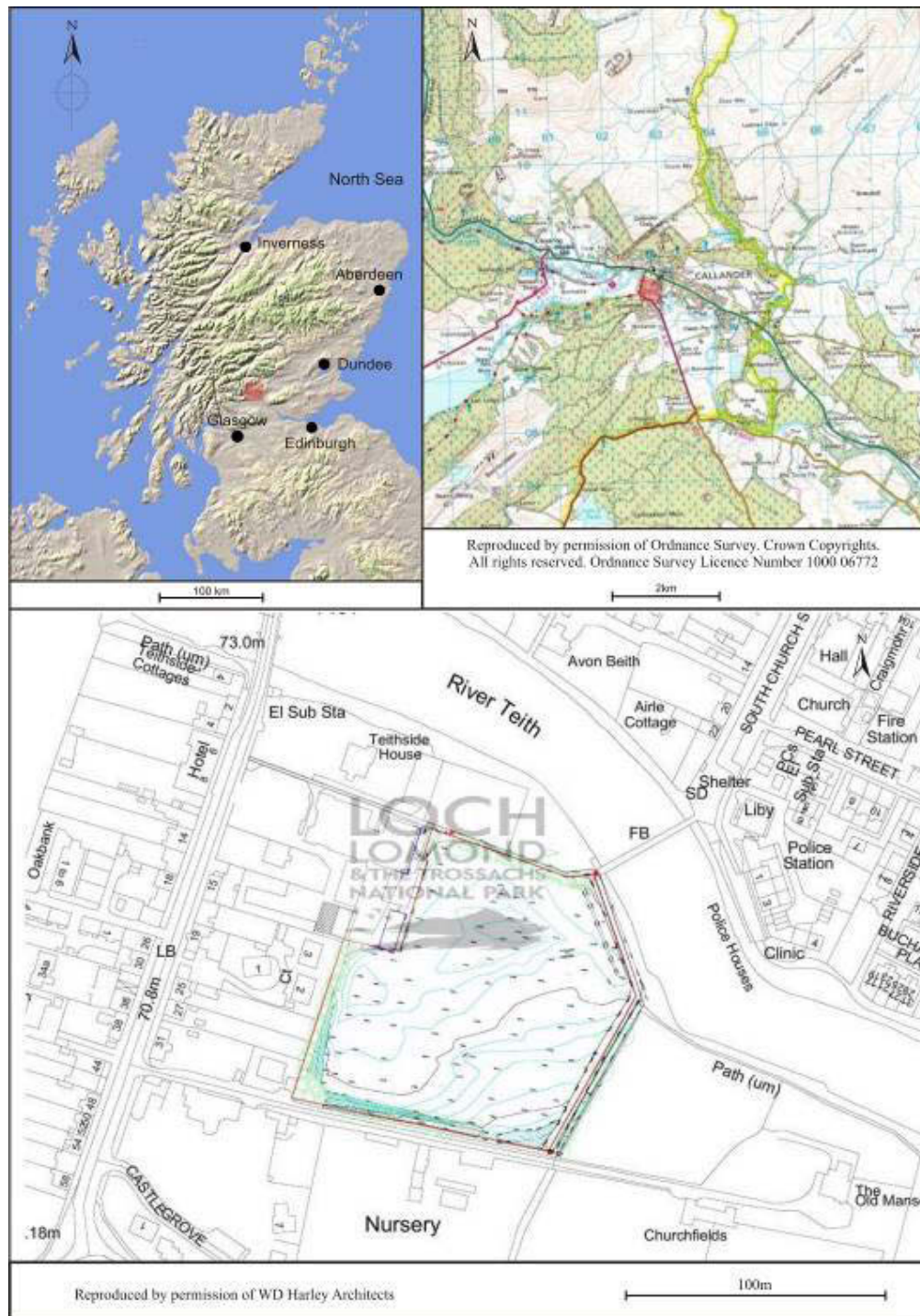


Figure 1 Site location plan

¹ www.bgs.ac.uk/opengeoscience/ - 27/03/13

2. *Brief Historical Summary*

An assessment of the available historical and cartographic resources showed little direct evidence for settlement on the development site, but also demonstrated the potential of the area for traces of earlier occupation.

To the immediate E of the proposed development is the site of Callander Castle, now occupied by the Old Manse constructed in 1868. The Statistical Account (OSA) of 1794 describes the Castle as having been ‘a square tower of considerable height’² although all that remains are fragmentary traces of walling in the grounds of the Manse. The Manse itself contains a stone built into the wall and bearing the date 1596. It must be assumed this is a re-used stone from the Castle itself.

To the NE of the playing fields and across the River Teith, an earthwork feature named *Tom Ma Chisaig* is protected as a Scheduled Monument and is accepted as the remains of a *motte*, or early castle site. This area is rich archaeologically and historically and the New Statistical Account (NSA) records the area around the motte as having been used as a market site in the early 19th century. In addition the motte overlooks the current road bridge built in 1908, which in turn replaced an earlier bridge built in 1764. The river here is shallow and it seems likely this is historically the most suitable crossing point of the Teith, guarded by the motte of Tom Ma Chisaig.³ Between the motte and the road bridge a churchyard dating to the 18th century is believed to occupy the site of the earliest church in Callander, founded in 1238.

It is likely that the area around the present bridge and Tom Ma Chisaig is the historic centre of settlement in the area, while the proposed development site comprises an area of undeveloped ground immediately SE of the bridge. With the site of Callander Castle located further to the E, it is entirely likely that some form of settlement, occupation or at the very least a routeway may have existed somewhere between the bridge and the Castle.

Also on the N side of the Teith, but to the immediate NE of the development, the Roman Camp Hotel occupies a 17th century hunting lodge reputedly built by the Drummond family. A large earthwork nearby was historically presumed to be the remnants of a Roman fortification, but is now accepted as geological. However a Roman marching camp and accompanying fort does exist at Bochartle to the W of Callander, indicating a clear Roman presence in the area. Prehistoric remains have also been recorded at Bochartle as well as at Claish to the S of the town.

A large number of maps were consulted in order to assess the development of the site itself and pinpoint any features that may previously have gone unrecorded. Particularly with the earlier maps it was not always possible to accurately pinpoint the site. A summary of maps consulted can be viewed in *Appendix A*.

The town of Callander itself does not appear in the cartographic record until 1682 when the ‘Mape of the countries about Stirling’ by John Adair depicts two ‘structures’, one to the N and another to the S of the river. These are recorded under the epithet of ‘Calendar’ and ‘Calendar R’. Whether these represent individual notable structures or stylised depictions of buildings to indicate the size of a village or settlement, is not clear.

² <http://canmore.rcahms.gov.uk/en/site/24376/details/callander+castle/>

³ While on site it was discussed with local inhabitants of Callander that two fords are historically known to have existed to the E of the road bridge, between this and the 1950s footbridge at the NE of the development area (*pers comm.*)



Figure 2 Earliest view of 'Calendar' as shown by John Adair in 1682 (NLS)

The structure to the S of the river is interesting in that it appears to be surrounded by what may be a planned park, with trees to the S of the structure and a possible boundary to the W. It is likely that this is a representation of Callander Castle as described above, while that to the N of the River may be what is now the Roman Camp Hotel, or a church. If a planned landscape existed around Callander Castle, it is possible this could have occupied some of the current development site.

The first depiction of the village which can be considered to display any level of accurate detail is 'The Military Survey of Scotland' by William Roy produced between 1747 and 1755.



Figure 3 'Callender' as depicted on William Roy's 'Military Survey of Scotland'



Figure 4 Detail of Roy's 'Military Survey of Scotland' showing the rough location of the proposed development

© The British Library Board. All Rights Reserved (Roy Military Survey of Scotland)

Roy's map shows no development S of the river with the exception of one structure, which is likely to be the site of Callander Castle, now occupied by the Old Manse.

George Taylor and Andrew Skinner's 'The Road from Edinburgh to Stirling, Tyndrum and Fort William' was produced in 1776 and is the first map which indicates the presence of a bridge across the river. There is still no evidence however of development on the S of the Teith and Callander Castle is no longer shown.



Figure 5 Callander on George Taylor and Andrew Skinner's 'The Road from Edinburgh to Stirling, Tyndrum and Fort William' from 1776. This is the first map to show a bridge across the Teith. (NLS)

Andrew Stobie's 'The Countries of Perth and Clackmannan' from 1783 and produced again in 1805 continue to show no extension of the town S of the Teith, while 'Perthshire with Clackmannan' drawn by John Thomson in the 1820s confirms the town to be based primarily N of the river. However, by 1866 with the production of the Ordnance Survey 1st edition, the 25 inch to 1 mile shows the town to have extended significantly to the S of the river.



*Figure 6 OS 1st edition 25 inch, Perth and Clackmannan CXXIV.1 (Callander).
Surveyed 1862. Published 1866.*

Surveyed in 1862, the 1st edition (*figure 6*) already shows the site limits established by the back gardens of the houses in Bridgend and Manse Lane along the southern perimeter towards the Old Manse and the site of Callander Castle. The only feature of note within the limits of the development is a linear watercourse running WSW to ENE, with rounded terminals at each end. The function of this feature is unclear and it does not appear on any of OS maps post-1866. The shape of the feature makes it unlikely this is a natural occurrence and it may represent a culvert running from Bridgend to the Teith, perhaps uncovered for some of its length. The Category C Listed Primary School to the W has yet to be built although Teithside House to the NE is in place.

Further assessment of the Ordnance Survey data continues to show the development of the town but demonstrates the Primary School Playing Fields to remain free of any subsequent development.

It is clear that the immediate environs of the development site have long been settled and played an important part in the development of Callander. As a site with no recorded development, the Playing Fields to the rear of the primary School hold enormous potential to reveal archaeological features pre-dating the expansion of the town S of the Teith in the mid 19th century.

3. Methodology

The purpose of field evaluation is to gain information about the archaeological potential of a site in order to meet the requirements of the planning consent 2012/0324/DET. An evaluation generally forms the first stage of an archaeological investigation undertaken in advance of development. The results of the evaluation will be used to decide whether further archaeological mitigation is required. In practice, this requires a number of trenches to be opened, these placed strategically across the site in order to gain good spatial coverage for assessing the potential of archaeological survival (*figure 5*).

The results of this phase of works and subsequent recommendations by Addyman Archaeology will allow West of Scotland Archaeology Service (WoSAS) to advise Loch Lomond and the Trossachs National Park Planning Authorities, allowing them to make an informed decision as to whether the site should be investigated further, or whether the archaeological condition can be discharged. Addyman Archaeology will provide recommendations relating to any future archaeological mitigation, but the decision for any further archaeological intervention ultimately rests with Loch Lomond and the Trossachs National Park as advised by WoSAS.

An archaeological evaluation investigates only a certain percentage of the development area. For the proposed development to the rear of Callander Primary School, WoSAS stipulated an archaeological evaluation covering a minimum of 8% of the total site area, due to the high potential for archaeological survival. The area to the S of the school in the SW corner of the playing fields remains unaffected by the development and will remain in use by the Primary School. This has thus been omitted from the evaluation area, reducing the area to be evaluated to around 12,770m².

Initially 16 specifically placed linear trenches were planned, providing good spatial coverage across the site. The trench plan as proposed accounted for 8% of the total development area, assuming the use of a 1.6m wide bucket of a mechanical excavator for the excavation of the trenches. This indicative trench plan could be adjusted depending upon the archaeological remains encountered and logistics on the ground, as long as a good spatial coverage of archaeological evaluation was provided across the site to test for the preservation of archaeological remains to be affected by development.

Subsequently a total of 19 linear trenches were opened across the site, with a total coverage of 1021m² (see *figure 5*). This amounted to fractionally under 8% of the total, and provided excellent spatial

coverage of the available areas. Trenches were excavated using a JCB 3CX mechanical excavator fitted with a 1.4m toothless ditching bucket. All trenches were opened under the direct supervision of a qualified archaeologist. The higher number of trenches was as the result of the smaller bucket size than initially anticipated.

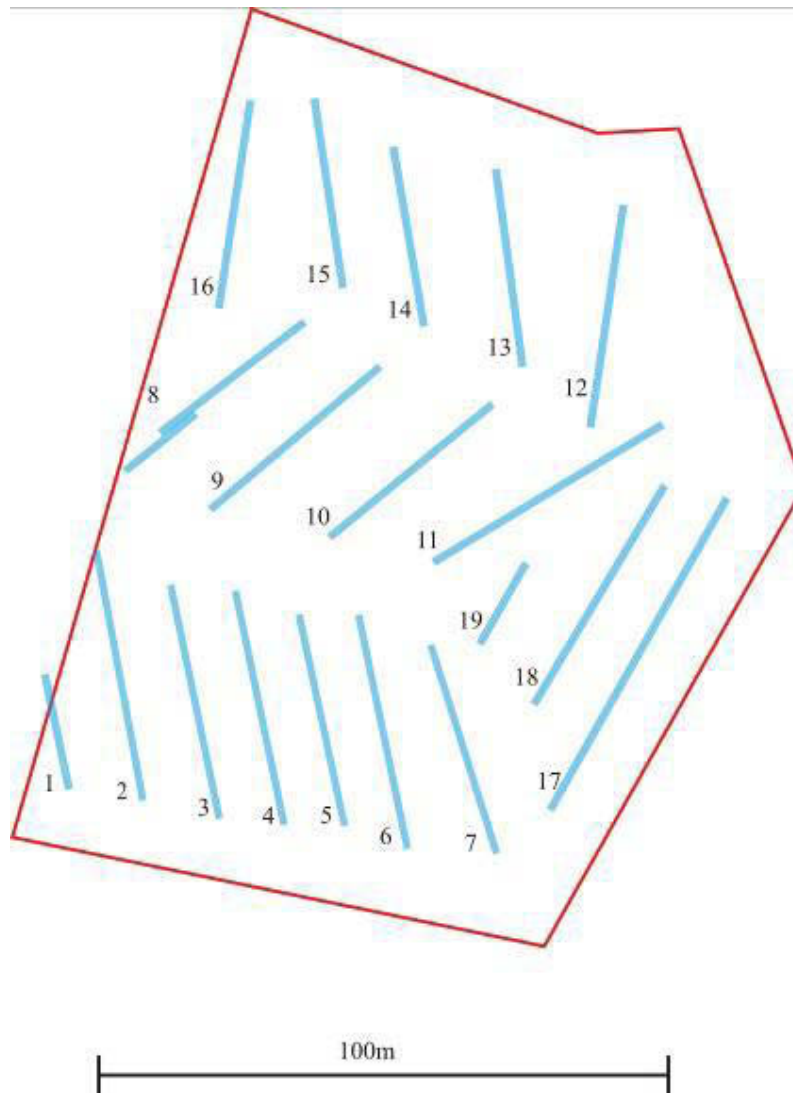


Figure 5 Trenches as excavated across site

In all trenches the level of the natural subsoil was reached. In the event that potentially significant archaeological remains or services were revealed, the reduction of the ground level was taken over by the archaeological team. All archaeological material and features were investigated and recorded to Addyman Archaeology and Institute for Archaeologists (*IfA*) recording standards.

4. Results

The archaeological evaluation of the Playing Fields of Callander Primary School revealed no features of archaeological interest. Of the 19 trenches opened, 8 of these (Trenches 2, 3, 5, 8, 10, 12, 14 and 16) revealed features that merited some degree of further archaeological investigation, but in each case the features proved to be related to drainage, of modern date or of no archaeological interest.

From the remainder only Trenches 6, 7 and 17 contained more than two contexts, with a rough rubble build up between the topsoil and undisturbed natural subsoil. In each of these cases the hardcore makeup was situated in close proximity to modern pathways.

Trenches 1, 4, 6, 7, 9, 11, 13, 15, 17, 18 and 19 can all be regarded as essentially archaeologically sterile and will not be discussed further.

A description of all the trenches and the key deposits and features identified in each trench is provided below. All context numbers for layers and feature fills are recorded within curved brackets (XXX) and cuts recorded within squared brackets [XXX].

i. Trench 2

Two features of potential archaeological interest were noted during excavation of Trench 2, with a dark linear (205) feature running W-E across the N end of the site, and a more promising darkly coloured circular feature (206) of around 0.35m diameter 24m from the SE end of the trench.



Plate 3 Post-excavation view of Trench 2 (Photograph 039)

As anticipated, excavation of the linear [207/205) showed this to be a 19th century red ceramic field drain, with a dark grey cinder/charcoal flecked fill. (205) also contained sherds of 19th century ceramic.

(206) proved to be the fill of a negatively cut feature [204] with gently sloping sides and a roughly domed base. However, this was found to contain a degraded Fe nail as well as coal and is likely to be 19th century in origin.



*Plate 4 Pre-excavation view of (206)
(Photograph 097)*



Plate 5 Post-excavation view of [204/206] (Photograph 100)

ii. Trench 3

Located immediately to the E of Trench 2, Trench 3 contained a continuation of the drainage network [207/205]. Here this was recorded as [306/304] and contained the same red ceramic drain as encountered in Trench 2.

iii. Trench 5

Trench 5 contained the most promising feature encountered during the evaluation. A large irregular feature, almost 'figure of 8' in shape was encountered against the SW baulk of the Trench, with the black brown silty fill contrasting sharply against the surrounding mid yellow and orange brown sandy subsoil. However, excavation of [503/504] revealed this to contain a fragment of plastic at the base of the deposit. This was not retained and the feature ignored as a modern intrusion.



Plate 6 Pre-excavation view of (504) (Photograph 116)



Plate 6 Post-excavation view of [503/504), SW facing section, S end (Photograph 117)

iv. Trench 8

Trench 8 also contained two linear features which were discovered to be red ceramic field drains. Both of these features contained 19th century ceramic fragments.



Plate 7 Red ceramic field drain in Trench 8 (Photograph 126)

v. Trench 10

An irregular shaped feature (1002) 3.3m from the SW end of Trench 10 was proved during excavation to be tree throw. While of limited archaeological interest, this feature confirms a hitherto unknown presence of tree in the development site.

vi. Trench 12

A modern Fe manhole cover with associated concrete and drainage pipes (1202) was located at the S end of Trench 12. This was situated in the area of the site prone to flooding. This area also coincides with the culvert or watercourse marked on the OS 1st edition 25 inch from 1862 (*cf. figure 6*). No direct evidence for this particular culvert as recorded in 1862 was found.

vii. Trench 14

Two linear features were located running NE-SW across the S end of Trench 14. Both of these, (1402) and (1403) were found to be part of the site's drainage network, with the former containing red ceramic fields drains and the latter a 20th century black plastic pipe.

viii. Trench 16

Trench 16 was found to contain two features which initially provoked interest, but were subsequently found to be of limited archaeological potential.

At the S end of the Trench (1604) a stone feature was revealed to be a setting for football post, subsequently grassed over and covered up by earth.



Plate 8 Feature (1604) (Photograph 227)

At the opposite end of the Trench, (1605) proved to be a little more interesting and problematic, but still of very limited archaeological significance. An amorphous area of dark humic gritty silt, excavation of this proved it to be a dip in the natural subsoil filled by slightly darker topsoil. A small extension was excavated to the side of Trench 16 in order to further pursue this and 19th century ceramic was recovered from this area.

ix. Outreach work

As part of the agreement to excavate the school playing fields prior to the end of term, Addyman Archaeology agreed to undertake some outreach work with the school, teaching the children about archaeology and showing them some of the discoveries made on the site and elsewhere.

Ross Cameron spoke at the school assembly on Monday 17th June 2013 and spent over half an hour with each class the following day. The children learned what an archaeologist does, the difference

between an archaeologist and a historian, why their playing fields were considered to be important and got the opportunity to dress us as an archaeologist and get their hands dirty. In addition disclaimed artefacts from previous excavations were passed around, while the children got the opportunity to look at rarer discoveries including pistol balls and coins discovered at nearby Sheriffmuir.

5. Summary and Conclusions

The results of the archaeological evaluation at Callander Primary were notable for the lack of any archaeologically significant material. It had been anticipated that the site had undergone some degree of landscaping due to the raised nature of the surrounding landscape to the SW and S perimeter of the site, but this may have been more extensive than initially anticipated.

Across the whole of the evaluation area the humic topsoil was seen to be no deeper than 0.10m and in many places this was less than 0.05m. The subsoil of banded sands, gravels and alluvial material showed very little sign of disturbance, while locally it was indicated that the River Teith had once flowed through the school playing fields before changing its course. Whether this is the case, the current flooding issues with the site may indicate that the area had at the very least formed a flood plain, perhaps not conducive to earlier settlement. The layering of these alluvial materials confirmed this observation, these following the contour lines of the shallow slope. This fact, in addition to the clear evidence for landscaping across the SW of the site has ensured that no important archaeological features exist within the development area.



Plate 9 Trenches backfilled across site (Photograph 251)

6. Mitigation and Recommendations

In light of the paucity of archaeological features uncovered during the evaluation of the playing fields to the rear of Callander Primary School, Addyman Archaeology recommend that no further archaeological mitigation is required during this development. We further recommend that the

planning condition can be deemed as having been met and that work on the next phase of development can proceed as planned. This recommendation would allow for discharge of the archaeological planning condition without further archaeological presence on site, and on completion of all reporting and dissemination requirements.

7. Acknowledgements

Addyman Archaeology were initially commissioned to complete the archaeological evaluation of the Callander Primary School Playing Fields by Graeme Harley of WD Harley Architects. Subsequently the project was managed by Laura Cameron of Gardiner & Theobald. Both Laura and Graeme deserve recognition for their commitment to the project and their enthusiasm for the archaeological potential of the site, despite the negative results. Geraldine Donald and Drew Leslie represented Stirling Council during the development, while John Souter of John Souter Consultancy Ltd. deserves credit for his patience and understanding with the complications the archaeological evaluation posed for future phases of works.

Ally Baird and his colleague Stewart from Ally Baird Ltd. were ever present during the evaluation works, acting as banksmen and overseeing the site on behalf of the client while keeping the archaeologists company. The trenches were excavated by Gardner Plant of Stirling. All completed their roles efficiently and in good spirit.

The biggest praise of all is reserved for the staff, and particularly the pupils of Callander Primary School. Head teacher Audrey Ross was helpful and interested while the boys and girls were enthusiastic and friendly. It is a rare opportunity for an archaeologist to speak with such an interested audience and the children's enthusiasm for the artefacts they were shown was infectious. To them we owe our thanks.

Bibliography

WoSAS Brief

www.nls.uk

www.rcahms.gov.uk

www.bgs.ac.uk

Appendix A:
Context Register; Playing Fields, Callander Primary – Archaeological Evaluation

Context	Trench	Type	Date	Initial	Description	Comments
101	1	Deposit	17/06/13	RC	Moderately compact mid grey brown loam/sandy silt with occasional stone inclusions. Depth: 0.05-0.10m	Turf and topsoil.
102	1	Deposit	17/06/13	RC	Banded orange brown sandy gravel abundant in small rounded stones.	Natural subsoil.
201	2	Deposit	17/06/13	RC	Moderately compact mid grey brown loam/sandy silt with occasional small rounded stone inclusions. Depth: 0.05-0.10m	Turf and topsoil. As (101).
202	2	Deposit	17/06/13	RC	Banded white brown and mid orange fine grain sand and gravel.	Natural subsoil. As (102).
203	2	Deposit	17/06/13	RC	Moderate to firmly compact mid brown sandy gravel, abundant in small rounded stones. Depth: 0.10m	Intermediate topsoil deposit.
204	2	Cut	17/06/13	RC/TR	Circular	Filled by (206).
205	2	Fill	17/06/13	RC/TR	Moderately compact dark grey/charcoal cinder.	Contains a red ceramic field drain and 19 th century ceramic. Fill of [207].
206	2	Fill	17/06/13	TR	Grey gravelly sand.	Fill of [204].
207	2	Cut	17/06/13	TR	W-E aligned linear cut with sharp, near vertical sides.	Filled by (205). Cut for 19 th century drain.
301	3	Deposit	17/06/13	TR	Moderately compact mid grey brown loam/sandy silt with occasional stone inclusions. Depth: 0.05-0.10m	Turf and topsoil. As (101).
302	3	Deposit	17/06/13	TR	Banded white brown and mid orange fine grain sand and gravel.	Natural subsoil. As (102).
303	3	Cut	17/06/13	TR	W-E aligned linear cut with sharp, near vertical sides.	Filled by (304). Cut for 19 th century drain. As (207).
304	3	Fill	17/06/13	TR	Moderately compact dark grey/charcoal cinder.	Contains a red ceramic field drain and 19 th century ceramic. Fill of [303]. As (205).
401	4	Deposit	17/06/13	TR	Moderately compact mid grey brown loam/sandy silt with occasional stone inclusions. Depth: 0.05-0.10m	Turf and topsoil. As (101).
402	4	Deposit	17/06/13	TR	Banded white brown, mid brown and mid orange fine grain sand and gravel.	Natural subsoil. As (102).
501	5	Deposit	17/06/13	RC	Moderately compact mid grey brown sandy silt with occasional stone inclusions. Depth: 0.10m	Turf and topsoil. As (101).
502	5	Deposit	17/06/13	RC	Banded mid yellow brown and mid orange fine grain sand and gravel.	Natural subsoil. As (102).

Context	Trench	Type	Date	Initial	Description	Comments
503	5	Cut	17/06/13	RC/TR	Irregular shaped feature against NW facing section of Tr. 5. 'Figure of 8' shaped, with gradual sides and a domed base.	Filled by (504).
504	5	Fill	17/06/13	TR	Moderately compact dark grey/charcoal cinder. Contained plastic fragments.	Fill of [503]. Modern disturbance.
601	6	Deposit	17/06/13	RC	Moderately compact mid grey brown sandy silt with occasional stone inclusions. Depth: 0.10m	Turf and topsoil. As (101).
602	6	Deposit	17/06/13	RC	Banded mid yellow brown and mid orange fine grain sand and gravel.	Natural subsoil. As (102).
603	6	Deposit	17/06/13	RC	Very firmly compact hardcore of angular gravel and cinders.	Made ground at SSE end of Trench adjacent to modern path.
701	7	Deposit	17/06/13	RC	Moderately compact mid grey brown sandy silt with occasional stone inclusions. Depth: 0.10-0.05m Depth negligible after c.29m S-N.	Turf and topsoil. As (101).
702	7	Deposit	17/06/13	RC	Very firmly compact fine grain mid grey and orange brown sandy silt. Much looser, more gravelly and alluvial to N.	Natural subsoil. As (102).
703	7	Deposit	17/06/13	RC	Very firmly compact hardcore of angular gravel and cinders. Depth: 0.10m	Made ground at SSE end of Trench adjacent to modern path.
801	8	Deposit	17/06/13	TR	Topsoil and turf: mid-brown sandy silt	Turf and topsoil. As (101).
802	8	Deposit	17/06/13	TR	Gravel sand yellow/brown orange mottled with some light sand (fine); latter more towards centre of pitch.	Natural subsoil. As (102).
803	8	Fill	17/06/13	TR	Dark grey gritty mottled – fill of field rain like (306) some Victorian pot from this. 2 field drain – fill similar.	Fill of [806].
804	8	Fill	17/06/13	TR	As (803) firmly compact mottled grey black gritty sand and cinder 19 th C ceramic and red ceramic field drain visible therein	Fill of [805].
805	8	Cut	17/06/13	TR	NE-SW aligned cut for (804).	19 th century field drain. Filled by (805).
806	8	Cut	17/06/13	TR	c.N-S aligned cut for (803).	19 th century field drain. Filled by (804).
901	9	Deposit	18/06/13	TR	Moderately compact mid grey brown sandy silt with occasional stone inclusions. Depth: 0.10-0.05m Depth negligible after c.29m S-N.	Turf and topsoil. As (101).
902	9	Deposit	18/06/13	TR	Orange brown sand and gravel with occasional medium stone inclusions.	Natural subsoil. As (102).
1001	10	Deposit	18/06/13	TR	Moderately compact yellow orange sand with occasional stone inclusions.	Turf and topsoil. As (101).

Context	Trench	Type	Date	Initial	Description	Comments
1002	10	Deposit	18/06/13	TR	Tree throw at 3.30-4m very shallow roughly circular at W edge of trench; depth c. 0.04m some semi-decayed wood and charcoal	
1003	10	Deposit	18/06/13	TR	Moderately compact mid grey brown loam/sandy silt with occasional stone inclusions. Depth: 0.05-0.10m	Turf and topsoil. As (101).
1101	11	Deposit	18/06/13	TR	Yellow sand and gravel very clean more gravel to S. Much more fine sand to N. More gravelly again at N edge of trench and orange	Natural subsoil. As (102).
1102	11	Deposit	18/06/13	TR	Moderately compact mid grey brown sandy silt with occasional stone inclusions.	Turf and topsoil. As (101).
1201	12	Deposit	18/06/13	TR	Gravel orange – backfill from culvert works? Contains some SF009 drain frags and brick	Modern deposit.
1202	12	Deposit	18/06/13	TR	Manhole cover. 3.20 – 3.70 area left high – perpendicular to trench.	Modern intrusion.
1203	12	Deposit	18/06/13	TR	Yellow sand from 8m	Natural subsoil. As (102).
1204	12	Deposit	18/06/13	TR	Area of darker topsoil c. 0.02-0.04m thin at 10m-11m in E side of trench	Topsoil as (101).
1205	12	Deposit	18/06/13	TR	Moderately compact mid grey brown sandy silt with occasional stone inclusions.	Turf and topsoil. As (101).
1301	13	Deposit	18/06/13	TR	Orange gravel with some brick as per T12 (1201) SF010 brick – made up for culvert works? Comes onto yellow sand 1302 retained for last 6m of trench then taken onto sand.	Modern deposit.
1302	13	Deposit	18/06/13	TR	Yellow sand in patches - natural	Natural subsoil. As (102).
1303	13	Deposit	18/06/13	TR	Topsoil filled hollow at 31.0 – 30.50m. (4.5m from trench edge to N).	Topsoil as (101).
1304	13	Deposit	18/06/13	TR	Moderately compact mid grey brown sandy silt with occasional stone inclusions.	Turf and topsoil. As (101).
1401	14	Deposit	18/06/13	TR	Orange/yellow nat sand W some gravel	Natural subsoil. As (102).
1402	14	Deposit	18/06/13	TR	NE-SW aligned ceramic drain : 4.8m W side of trench	19 th /20 th century drainage.
1403	14	Deposit	18/06/13	TR	Mod black plastic cable pipe and trench in hardcore I. – area left high	Modern drainage.
1404	14	Deposit	18/06/13	TR	Gravel with med stones in darker brown band at 15m – 16.60 then orange gravel after with occ. Larger stones	Natural subsoil. As (102).
1405	14	Deposit	18/06/13	TR	Moderately compact mid grey brown sandy silt with occasional stone inclusions.	Turf and topsoil. As (101).

<i>Context</i>	<i>Trench</i>	<i>Type</i>	<i>Date</i>	<i>Initial</i>	<i>Description</i>	<i>Comments</i>
1501	15	Deposit	18/06/13	TR	Orange sand and gravel – here clearly natural.	Natural subsoil. As (102).
1502	15	Deposit	18/06/13	TR	Gravel backfill coming in at 18m from N end.	Modern deposit associated with drainage.
1503	15	Deposit	18/06/13	TR	Moderately compact mid grey brown sandy silt with occasional stone inclusions.	Turf and topsoil. As (101).
1601	16	Deposit	18/06/13	TR	Moderately compact mid grey brown sandy silt with occasional stone inclusions.	Turf and topsoil. As (101).
1602	16	Deposit	18/06/13	TR	Orange gravel and fine sand.	Natural subsoil. As (102).
1603	16	Deposit	18/06/13	TR	Gravel backfill c. 13m from N end of Trench.	Modern deposit associated with drainage.
1604	16	Structure	18/06/13	TR	Stone and concrete setting	Modern.
1605	16	Deposit	18/06/13	TR	Dark, humic silt.	Slight disturbance in the natural subsoil.
1701	17	Deposit	19/06/13	RC	Moderately compact mid brown loam. Depth: < 0.10m	Turf and topsoil. As (101).
1702	17	Deposit	19/06/13	RC	Mid grey gritty sand and hardcore. Moderate to firm. Depth: < 0.20m Made-ground at SE of site for path.	Made ground at SSE end of Trench adjacent to modern path. As (603).
1703	17	Deposit	19/06/13	RC	Nat subsoil firmly compact mid brown and slightly grey brown silty sand with frequent small rounded stone inclusions	Natural subsoil. As (102).
1801	18	Deposit	19/06/13	RC	Topsoil. As (1701). At S end this is a little deeper. By 156m S-N the depth is c. less than 0.05m. D: 0.05-0.1m	Turf and topsoil. As (101).
1802	18	Deposit	19/06/13	RC	Nat subsoil. Firmly compact banded yellow brown and orange brown sand and gravel	Natural subsoil. As (102).
1901	19	Deposit	19/06/13	RC	Very thin turf and top-soil. Mid grey brown sand silt. D: c. 0.05m	Turf and topsoil. As (101).
1902	19	Deposit	19/06/13	RC	Nat subsoil. Fine grant. Yellow brown sand and gravel.	Natural subsoil. As (102).

Appendix B:

Finds Register; Playing Fields, Callander Primary – Archaeological Evaluation

<i>No.</i>	<i>Context</i>	<i>Quantity</i>	<i>Material</i>	<i>Description</i>	<i>Comments</i>	<i>Date</i>	<i>Initial</i>
001	205	4	Glass, Ceramic	Glass and ceramic	19 th century	17/06/13	TR
002	206	1	Fe	Corroded Fe nail		17/06/13	TR
003	206	1	Coal	Fragment of coal		17/06/13	TR
004	304	5	Glass, Ceramic	Glass and ceramic	19 th century	17/06/13	TR

No.	Context	Quantity	Material	Description	Comments	Date	Initial
005	501	1	Fe	Fe tool/handle	Likely to be a 'rasp' handle	17/06/13	RC
006	504	1	Glass	Marble	Modern	17/06/13	TR
007	803		Ceramic	Glazed sherds	19 th century	17/06/13	RC
008	804		Ceramic	Glazed sherds	19 th century	17/06/13	RC
009	1201	3	Ceramic	Drain and brick fragments	19 th century	18/06/13	TR
010	1301	2	Ceramic	Brick		18/06/13	TR
011	1604	3	Fe, Glass	Fe and glass fragments	19 th /20 th century	18/06/13	TR

Appendix C:

Photographic Register; Playing Fields, Callander Primary – Archaeological Evaluation

Shot Num.	Direction facing	Trench	Contexts	Description	Date	Initial
001	ESE	-	-	Pre-excavation view of evaluation site	17/06/13	TR
002	SE	-	-	Pre-excavation view of evaluation site	17/06/13	TR
003	S	-	-	Pre-excavation view of evaluation site	17/06/13	TR
004	WNW	-	-	Pre-excavation view of evaluation site	17/06/13	TR
005	SW	-	-	Pre-excavation view of evaluation site	17/06/13	TR
006	SE	-	-	Pre-excavation view of evaluation site	17/06/13	TR
007	NW	-	-	Pre-excavation view of evaluation site	17/06/13	TR
008	WNW	-	-	Pre-excavation view of evaluation site	17/06/13	TR
009	NW	-	-	Pre-excavation view of evaluation site	17/06/13	TR
010	W	-	-	Pre-excavation view of evaluation site	17/06/13	TR
011	WSW	-	-	Pre-excavation view of evaluation site	17/06/13	TR
012	SSW	-	-	Pre-excavation view of evaluation site	17/06/13	TR
013	SW	-	-	Pre-excavation view of evaluation site	17/06/13	TR
014	NE	-	-	Pre-excavation view of evaluation site	17/06/13	TR
015	NNW	-	-	Pre-excavation view of evaluation site	17/06/13	TR
016	NW	-	-	Pre-excavation view of evaluation site	17/06/13	TR
017	SSW	-	-	Pre-excavation view of evaluation site	17/06/13	TR
018	E	-	-	Pre-excavation view of evaluation site	17/06/13	TR
019	W	-	-	Pre-excavation view of evaluation site	17/06/13	TR
020	NW	-	-	Pre-excavation view of evaluation site	17/06/13	TR
021	W	-	-	Pre-excavation view of evaluation site showing down cutting along SW side	17/06/13	TR
022	N	-	-	Pre-excavation view of evaluation site	17/06/13	TR
023	NE	-	-	Pre-excavation view of evaluation site	17/06/13	TR
024	E	-	-	Pre-excavation view of evaluation site	17/06/13	TR
025	ESE	-	-	Pre-excavation view of evaluation site showing down cutting along S side	17/06/13	TR
026	W	1	-	Trench 1 – General view	17/06/13	TR
027	NW	1	-	Trench 1 – Post-excavation view	17/06/13	TR
028	NW	1	-	Trench 1 – Post-excavation view	17/06/13	TR
029	SE	1	-	Trench 1 – Post-excavation view	17/06/13	TR
030	SE	1	-	Trench 1 – Post-excavation view	17/06/13	TR
031	SW	1	(101)	NE facing section of Trench 1	17/06/13	TR

<i>Shot Num.</i>	<i>Direction facing</i>	<i>Trench</i>	<i>Contexts</i>	<i>Description</i>	<i>Date</i>	<i>Initial</i>
032	SW	1	(101)	NE facing section of Trench 1	17/06/13	TR
033	SW	1	(101)	NE facing section of Trench 1	17/06/13	TR
034	SW	1	(101)	NE facing section of Trench 1	17/06/13	TR
035	SW	1	(101)	NE facing section of Trench 1	17/06/13	TR
036	SW	1	(101)	NE facing section of Trench 1	17/06/13	TR
037	SW	1	(101)	NE facing section of Trench 1	17/06/13	TR
038	SW	1	(101)	NE facing section of Trench 1	17/06/13	TR
039	WNW	2	-	Trench 2 – General view	17/06/13	TR
040	NW	2	-	Trench 2 – Post-excavation view	17/06/13	TR
041	NW	2	-	Trench 2 – Post-excavation view	17/06/13	TR
042	NW	2	[204/206)	Pre-excavation view of [204/206)	17/06/13	TR
043	SW	2	[204/206)	Pre-excavation view of [207/205)	17/06/13	TR
044	NW	2	[204/206)	Pre-excavation view of [207/205)	17/06/13	TR
045	SW	2	[204/206)	Pre-excavation view of [207/205)	17/06/13	TR
046	NW	2	[204/206)	Pre-excavation view of [207/205)	17/06/13	TR
047	SW	2	[204/206)	Pre-excavation view of [207/205)	17/06/13	TR
048	N	2	[204/206)	Pre-excavation view of [207/205)	17/06/13	TR
049	SW	2	(201)	NE facing section of Trench 2	17/06/13	TR
050	SW	2	(201)	NE facing section of Trench 2	17/06/13	TR
051	SW	2	(201)	NE facing section of Trench 2	17/06/13	TR
052	SW	2	(201)	NE facing section of Trench 2	17/06/13	TR
053	SW	2	(201)	NE facing section of Trench 2	17/06/13	TR
054	SW	2	(201)	NE facing section of Trench 2	17/06/13	TR
055	SW	2	(201)	NE facing section of Trench 2	17/06/13	TR
056	SW	2	(201)	NE facing section of Trench 2	17/06/13	TR
057	SW	2	(201)	NE facing section of Trench 2	17/06/13	TR
058	SW	2	(201)	NE facing section of Trench 2	17/06/13	TR
059	SW	2	(201)	NE facing section of Trench 2	17/06/13	TR
060	SW	2	(201)	NE facing section of Trench 2	17/06/13	TR
061	SW	2	(201)	NE facing section of Trench 2	17/06/13	TR
062	SW	2	(201)	NE facing section of Trench 2	17/06/13	TR
063	SW	2	(201)	NE facing section of Trench 2	17/06/13	TR
064	SW	2	(201)	NE facing section of Trench 2	17/06/13	TR
065	NW	3	-	Trench 3 – General view	17/06/13	TR
066	NW	3	-	Trench 3 – Post-excavation view	17/06/13	TR
067	NW	3	-	Trench 3 – Post-excavation view	17/06/13	TR
068	SSW	3	-	Trench 3 – General view	17/06/13	TR
069	NW	3	-	Trench 3 – Post-excavation view	17/06/13	TR
070	NW	3	-	Trench 3 – Post-excavation view	17/06/13	TR
071	SE	3	[306/304)	Pre-excavation view of [306/304)	17/06/13	TR
072	SW	3	[306/304)	Pre-excavation view of [306/304)	17/06/13	TR
073	SW	3	[306/304)	Pre-excavation view of [306/304)	17/06/13	TR
074	NW	3	[306/304)	Pre-excavation view of [306/304)	17/06/13	TR
075	SW	3	(301)	NE facing section of Trench 3	17/06/13	TR
076	SW	3	(301)	NE facing section of Trench 3	17/06/13	TR
077	SW	3	(301)	NE facing section of Trench 3	17/06/13	TR
078	SW	3	(301)	NE facing section of Trench 3	17/06/13	TR

<i>Shot Num.</i>	<i>Direction facing</i>	<i>Trench</i>	<i>Contexts</i>	<i>Description</i>	<i>Date</i>	<i>Initial</i>
079	SW	3	(301)	NE facing section of Trench 3	17/06/13	TR
080	SW	3	(301)	NE facing section of Trench 3	17/06/13	TR
081	SW	3	(301)	NE facing section of Trench 3	17/06/13	TR
082	SW	3	(301)	NE facing section of Trench 3	17/06/13	TR
083	SW	3	(301)	NE facing section of Trench 3	17/06/13	TR
084	SW	3	(301)	NE facing section of Trench 3	17/06/13	TR
085	SW	3	(301)	NE facing section of Trench 3	17/06/13	TR
086	SW	3	(301)	NE facing section of Trench 3	17/06/13	TR
087	SW	3	(301)	NE facing section of Trench 3	17/06/13	TR
088	SW	3	(301)	NE facing section of Trench 3	17/06/13	TR
089	NW	2	[207/205]	Pre-excavation view of [207/205]	17/06/13	TR
090	SE	2	[207/205]	Pre-excavation view of [207/205]	17/06/13	TR
091	SW	2	[207/205]	Pre-excavation view of [207/205]	17/06/13	TR
092	SE	2	[207/205]	Post-excavation view of [207/205]	17/06/13	TR
093	SE/V	2	[207/205]	Post-excavation view of [207/205]	17/06/13	TR
094	SE/V	2	[207/205]	Post-excavation view of [207/205]	17/06/13	TR
095	S	2	[204/206]	Pre-excavation view of [204/206]	17/06/13	TR
096	SW	2	[204/206]	Pre-excavation view of [204/206]	17/06/13	TR
097	SW/V	2	[204/206]	Pre-excavation view of [204/206]	17/06/13	TR
098	N	2	[204/206]	SE facing section of [204/206]	17/06/13	TR
099	N	2	[204/206]	SE facing section of [204/206]	17/06/13	TR
100	NW/V	2	[204/206]	SE facing section of [204/206]	17/06/13	TR
101	NW	4	-	Post-excavation view of Trench 4	17/06/13	RC
102	SW	4	(401)	NE facing section of Trench 4	17/06/13	RC
103	W	4	-	General view of Trench 4	17/06/13	RC
104	NW	-	-	General view of site progress and trench locations	17/06/13	RC
105	W	-	-	General view of site progress and trench locations	17/06/13	RC
106	NW	5	-	Post-excavation view of Trench 5	17/06/13	RC
107	SW	5	(501)	NE facing section of Trench 5	17/06/13	RC
108	WNW	5	-	General view of Trench 5	17/06/13	RC
109	NW	6	-	Post-excavation view of Trench 6	17/06/13	RC
110	NE	6	(601), (602)	SW facing section of Trench 6	17/06/13	RC
111	NW	7	-	Post-excavation view of Trench 7	17/06/13	RC
112	NE	7	(701), (702)	SW facing section of Trench 7	17/06/13	RC
113	NW	3	[306/304]	Post-excavation view of [306/304]	17/06/13	TR
114	NW	3	[306/304]	Post-excavation view of [306/304]	17/06/13	TR
115	SE	5	[503/504]	Pre-excavation view of [503/504]	17/06/13	TR
116	NE	5	[503/504]	Pre-excavation view of [503/504]	17/06/13	TR
117	NE	5	[503/504]	SW facing section of [503] showing (504) – S end	17/06/13	RC
118	NW	5	[503/504]	SW facing section of [503] showing (504) – S end	17/06/13	RC
119	NW	5	-	Working shot – Excavating Trench 5	17/06/13	RC
120	NW	5	-	Working shot – Excavating Trench 5	17/06/13	RC
121	NE	8	-	Post-excavation view of Trench 8	17/06/13	RC
122	NW	8	(801)	SE facing section of Trench 8	17/06/13	RC
123	NE	8	-	Post-excavation view of Trench 8 – NE half	17/06/13	RC
124	NW	8	(801)	SE facing section of Trench 8 – NE half	17/06/13	RC
125	SE	-	-	Backfilled trenches at end of day 1	17/06/13	RC

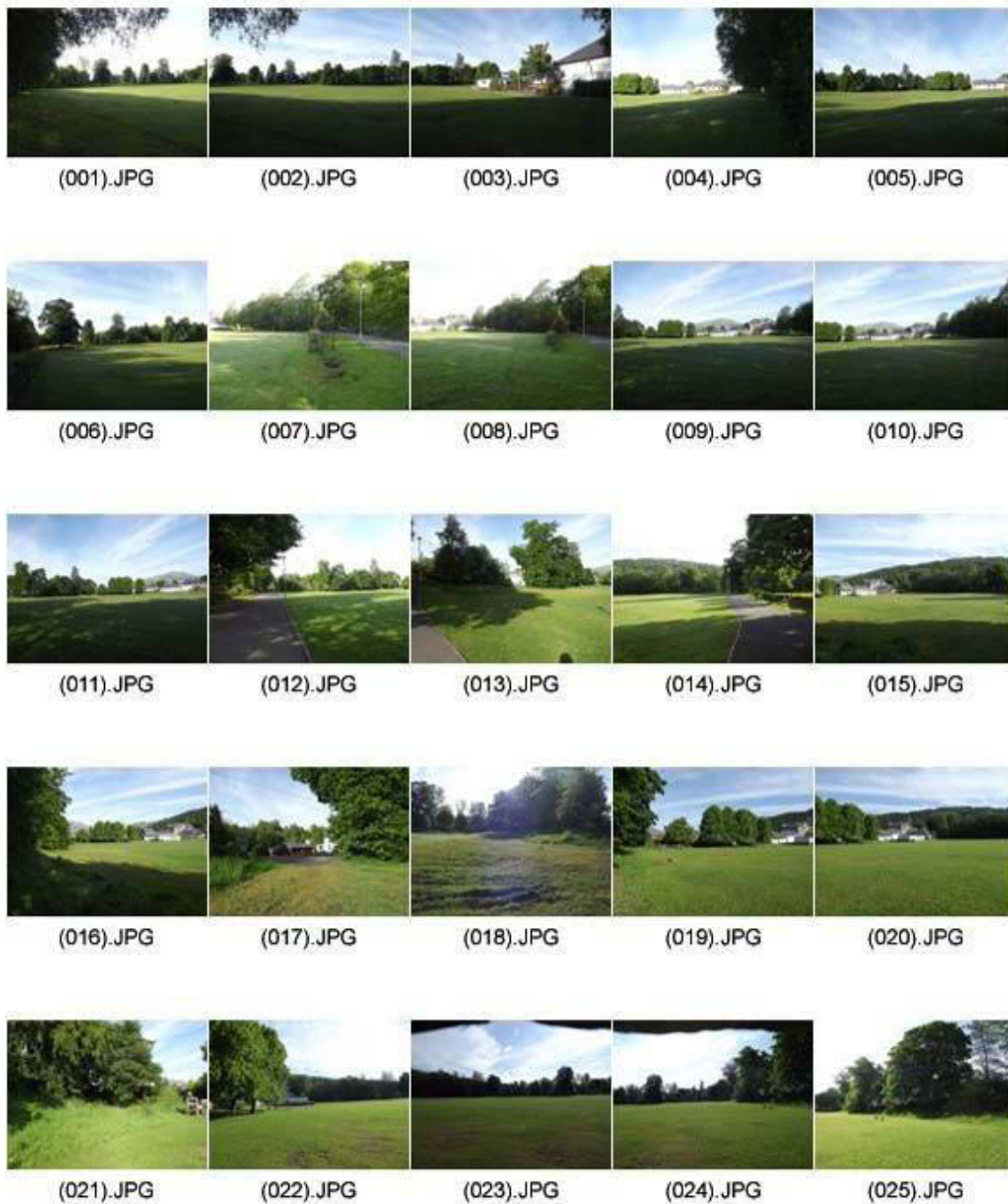
Shot Num.	Direction facing	Trench	Contexts	Description	Date	Initial
126	NE/V	8	[805/803)	Post-excavation view of [805/803)	17/06/13	RC
127	W	8	[805/803)	Location of [805/803) in Trench 8	17/06/13	RC
128	NE	9	-	Post-excavation view of Trench 9	18/06/13	TR
129	N	9	-	Oblique view of Trench 9	18/06/13	TR
130	SW	9	-	Post-excavation view of Trench 9	18/06/13	TR
131	NW	9	(901)	SE facing section of Trench 9	18/06/13	TR
132	NW	9	(901)	SE facing section of Trench 9	18/06/13	TR
133	NE	10	-	Post-excavation view of Trench 10	18/06/13	TR
134	N	10	(1002)	Pre-excavation view of (1002)	18/06/13	TR
135	NW	10	(1002)	Pre-excavation view of (1002)	18/06/13	TR
136	N	10	(1002)	Oblique view of Trench 10 showing (1002)	18/06/13	TR
137	N	10	(1002)	Oblique view of Trench 10 showing (1002)	18/06/13	TR
138	N	10	-	Oblique view of Trench 10	18/06/13	TR
139	N	10	-	Oblique view of Trench 10	18/06/13	TR
140	SW	10	-	General view of Trench 10	18/06/13	TR
141	S	10	-	Oblique view of Trench 10	18/06/13	TR
142	NW	10	-	SE facing section of Trench 10	18/06/13	TR
143	NW	10	-	SE facing section of Trench 10	18/06/13	TR
144	NW	10	-	SE facing section of Trench 10	18/06/13	TR
145	NW	10	-	SE facing section of Trench 10 showing (1002)	18/06/13	TR
146	NE	11	-	Post-excavation view of Trench 11	18/06/13	TR
147	NE	11	-	Post-excavation view of Trench 11	18/06/13	TR
148	N	11	-	Post-excavation view of Trench 11	18/06/13	TR
149	N	11	-	Post-excavation view of Trench 11	18/06/13	TR
150	N	11	-	Post-excavation view of Trench 11	18/06/13	TR
151	NE	11	-	Post-excavation view of Trench 11	18/06/13	TR
152	SW	11	-	Post-excavation view of Trench 11	18/06/13	TR
153	SW	11	-	Post-excavation view of Trench 11	18/06/13	TR
154	SW	11	-	Post-excavation view of Trench 11	18/06/13	TR
155	NW	11	-	SE-facing section of Trench 11, N end	18/06/13	TR
156	NW	11	-	SE-facing section of Trench 11, N end	18/06/13	TR
157	-	-	-	Working shot – Outreach with school	18/06/13	TR
158	NW	11	-	SE-facing section of Trench 11, S end	18/06/13	TR
159	NW	11	-	SE-facing section of Trench 11, S end	18/06/13	TR
160	-	-	-	Working shot – Outreach with school	18/06/13	TR
161	-	-	-	Working shot – Outreach with school	18/06/13	TR
162	-	-	-	Working shot – Outreach with school	18/06/13	TR
163	-	-	-	Working shot – Outreach with school	18/06/13	TR
164	-	-	-	Working shot – Outreach with school	18/06/13	TR
165	-	-	-	Working shot – Outreach with school	18/06/13	TR
166	N	12	-	Post-excavation view of Trench 12	18/06/13	TR
167	N	12	-	Post-excavation view of Trench 12	18/06/13	TR
168	ENE	13	-	WSW-facing section Trench 13	18/06/13	TR
169	N	12	-	Modern manhole in Trench 12	18/06/13	TR
170	N	12	-	Detail of modern manhole in Trench 12	18/06/13	TR
171	N	12	-	Detail of modern drain fragment, <i>in situ</i> , Trench 12	18/06/13	TR

<i>Shot Num.</i>	<i>Direction facing</i>	<i>Trench</i>	<i>Contexts</i>	<i>Description</i>	<i>Date</i>	<i>Initial</i>
172	NW	13	-	Post-excavation view of Trench 13	18/06/13	TR
173	-	-	-	Working shot – Outreach with school	18/06/13	TR
174	-	-	-	Working shot – Outreach with school	18/06/13	TR
175	NNW	13	-	Post-excavation view of Trench 13	18/06/13	TR
176	NNW	13	-	Post-excavation view of Trench 13, S end	18/06/13	TR
177	NNW	13	-	Post-excavation view of Trench 13	18/06/13	TR
178	NNW	13	-	Post-excavation view of Trench 13	18/06/13	TR
179	NW	13	-	Post-excavation view of Trench 13	18/06/13	TR
180	W	13	-	E-facing section Trench 13	18/06/13	TR
181	W	13	-	E-facing section Trench 13	18/06/13	TR
182	NNW	13	-	Post-excavation view of Trench 13	18/06/13	TR
183	-	-	-	Working shot – Outreach with school	18/06/13	TR
184	SSE	13	-	Post-excavation view of Trench 13	18/06/13	TR
185	S	13	-	Post-excavation view of Trench 13	18/06/13	TR
186	W	13	-	E-facing section of Trench 13	18/06/13	TR
187	SSE	13	-	Post-excavation view of Trench 13	18/06/13	TR
188	W	13	-	E-facing section of Trench 13	18/06/13	TR
189	W	13	-	E-facing section of Trench 13	18/06/13	TR
190	-	-	-	Working shot – Outreach with school	18/06/13	TR
191	-	-	-	Working shot – Outreach with school	18/06/13	TR
192	-	-	-	Working shot – Outreach with school	18/06/13	TR
193	-	-	-	Working shot – Outreach with school	18/06/13	TR
194	-	-	-	Working shot – Outreach with school	18/06/13	TR
195	-	-	-	Working shot – Outreach with school	18/06/13	TR
196	-	-	-	Working shot – Outreach with school	18/06/13	TR
197	-	-	-	Working shot – Outreach with school	18/06/13	TR
198	-	-	-	Working shot – Outreach with school	18/06/13	TR
199	-	-	-	Working shot – Outreach with school	18/06/13	TR
200	NNW	14	-	Post-excavation view of Trench 14	18/06/13	TR
201	NNW	14	-	Post-excavation view of Trench 14	18/06/13	TR
202	NW	14	-	Detail of exposed modern drain, Trench 14	18/06/13	TR
202	NNW	14	-	Post-excavation view of Trench 14	18/06/13	TR
204	NNW	14	-	Post-excavation view of Trench 14	18/06/13	TR
205	SSE	14	-	Post-excavation view of Trench 14	18/06/13	TR
206	W	14	-	E-facing section of Trench 14	18/06/13	TR
207	NW	14	-	Post-excavation view of Trench 14	18/06/13	TR
208	SSE	14	-	Post-excavation view of Trench 14	18/06/13	TR
209	SSE	14	-	Post-excavation view of Trench 14	18/06/13	TR
210	NNW	14	-	Post-excavation view of Trench 14	18/06/13	TR
211	W	14	-	E-facing section of Trench 14	18/06/13	TR
212	SSE	14	-	Post-excavation view of Trench 14	18/06/13	TR
213	SSE	14	-	Post-excavation view of Trench 14	18/06/13	TR
214	NNW	14	-	Post-excavation view of Trench 14	18/06/13	TR
215	NNW	15	-	Post-excavation view of Trench 15	18/06/13	TR
216	NNW	15	-	Post-excavation view of Trench 15	18/06/13	TR
217	SSE	15	-	Post-excavation view of Trench 15	18/06/13	TR
218	SSE	15	-	Post-excavation view of Trench 15, modern cable	18/06/13	TR

<i>Shot Num.</i>	<i>Direction facing</i>	<i>Trench</i>	<i>Contexts</i>	<i>Description</i>	<i>Date</i>	<i>Initial</i>
				tube		
219	NNW	15	-	Post-excavation view of Trench 15	18/06/13	TR
220	SW	15	-	NE-facing section Trench 15	18/06/13	TR
221	SSE	15	-	Post-excavation view of Trench 15	18/06/13	TR
222	S	15	-	Post-excavation view of Trench 15	18/06/13	TR
223	SW	15	-	NE-facing section Trench 15	18/06/13	TR
224	NNW	16	-	Post-excavation view of Trench 16	18/06/13	TR
225	ENE	16	[1605]	Pre-excavation of [1605]	18/06/13	TR
226	NNE	16	-	Football goalpost foundations	18/06/13	TR
227	W	16	-	Football goalpost foundations	18/06/13	TR
228	SSE	16	-	Football goalpost foundations	18/06/13	TR
229	SSE	16	-	Football goalpost foundations	18/06/13	TR
230	SSE	16	-	Post-excavation view Trench 16	18/06/13	TR
231	SSE	16	[1605]	Pre-excavation of [1605]	18/06/13	TR
232	S	16	-	Post-excavation view Trench 16	18/06/13	TR
233	ENE	16	[1605]	Pre-excavation of [1605]	18/06/13	TR
234	ENE	16	-	WSE-facing section Trench 16	18/06/13	TR
235	SSE	16	-	Post-excavation view of Trench 16	18/06/13	TR
236	S	16	-	Post-excavation view of Trench 16	18/06/13	TR
237	SSE	16	-	Post-excavation view of Trench 16	18/06/13	TR
238	NNW	16	-	Post-excavation view of Trench 16	18/06/13	TR
239	N	17	-	Post-excavation view of Trench 17	19/06/13	RC
240	NW	17	-	General view of Trench 17	19/06/13	RC
241	NE	17, 18	-	Working shot – Trench 17 and 18	19/06/13	RC
242	WSW	17	(1701), (1702)	ENE facing section of Trench 17	19/06/13	RC
243	N	18	-	Location view of Trench 18	19/06/13	RC
244	N	18	-	Post-excavation view of Trench 18	19/06/13	RC
245	E	18	(1801)	W facing section of Trench 18	19/06/13	RC
246	E	18	(1801)	W facing section of Trench 18	19/06/13	RC
247	SW	17, 18	-	Working shot – general view of Trench 17 and 18	19/06/13	RC
248	W	17, 18	-	Working shot – general view of Trench 17 and 18	19/06/13	RC
249	N	19	-	Post-excavation view of Trench 19	19/06/13	RC
250	E	19	(191)	W facing section of Trench 19	19/06/13	RC
251	NW	-	-	General view across site post-backfilling	19/06/13	RC
252	E	-	-	General view across site post-backfilling	19/06/13	RC
253	NW	-	-	General view across site post-backfilling	19/06/13	RC

Appendix D:

Photographic Thumbnails; Playing Fields, Callander Primary – Archaeological Evaluation





(026).JPG

(027).JPG

(028).JPG

(029).JPG

(030).JPG



(031).JPG

(032).JPG

(033).JPG

(034).JPG

(035).JPG



(036).JPG

(037).JPG

(038).JPG

(039).JPG

(040).JPG



(041).JPG

(042).JPG

(043).JPG

(044).JPG

(045).JPG



(046).JPG

(047).JPG

(048).JPG

(049).JPG

(050).JPG



(051).JPG

(052).JPG

(053).JPG

(054).JPG

(055).JPG



(056).JPG

(057).JPG

(058).JPG

(059).JPG

(060).JPG



(061).JPG

(062).JPG

(063).JPG

(064).JPG

(065).JPG



(066).JPG

(067).JPG

(068).JPG

(069).JPG

(070).JPG



(071).JPG

(072).JPG

(073).JPG

(074).JPG

(075).JPG



(076).JPG

(077).JPG

(078).JPG

(079).JPG

(080).JPG



(081).JPG

(082).JPG

(083).JPG

(084).JPG

(085).JPG



(086).JPG

(087).JPG

(088).JPG

(089).JPG

(090).JPG



(091).JPG

(092).JPG

(093).JPG

(094).JPG

(095).JPG



(096).JPG

(097).JPG

(098).JPG

(099).JPG

(100).JPG



(101).JPG



(102).JPG



(103).JPG



(104).JPG



(105).JPG



(106).JPG



(107).JPG



(108).JPG



(109).JPG



(110).JPG



(111).JPG



(112).JPG



(113).JPG



(114).JPG



(115).JPG



(116).JPG



(117).JPG



(118).JPG



(119).JPG



(120).JPG



(121).JPG



(122).JPG



(123).JPG



(124).JPG



(125).JPG



(126).JPG



(127).JPG



(128).JPG



(129).JPG



(130).JPG



(131).JPG



(132).JPG



(133).JPG



(134).JPG



(135).JPG



(136).JPG



(137).JPG



(138).JPG



(139).JPG



(140).JPG



(141).JPG



(142).JPG



(143).JPG



(144).JPG



(145).JPG



(146).JPG



(147).JPG



(148).JPG



(149).JPG



(150).JPG



(151).JPG

(152).JPG

(153).JPG

(154).JPG

(155).JPG



(156).JPG

(157).JPG

(158).JPG

(159).JPG

(160).JPG



(161).JPG

(162).JPG

(163).JPG

(164).JPG

(165).JPG



(166).JPG



(167).JPG



(168).JPG



(169).JPG



(170).JPG



(171).JPG



(172).JPG



(173).JPG



(174).JPG



(175).JPG



(176).JPG



(177).JPG



(178).JPG



(179).JPG



(180).JPG



(181).JPG



(182).JPG



(183).JPG



(184).JPG



(185).JPG



(186).JPG



(187).JPG



(188).JPG



(189).JPG



(190).JPG



(191).JPG



(192).JPG



(193).JPG



(194).JPG



(195).JPG



(196).JPG



(197).JPG



(198).JPG



(199).JPG



(200).JPG



(201).JPG



(202).JPG



(203).JPG



(204).JPG



(205).JPG



(206).JPG



(207).JPG



(208).JPG



(209).JPG



(210).JPG



(211).JPG



(212).JPG



(213).JPG



(214).JPG



(215).JPG



(216).JPG



(217).JPG



(218).JPG



(219).JPG



(220).JPG



(221).JPG



(222).JPG



(223).JPG



(224).JPG



(225).JPG



(226).JPG

(227).JPG

(228).JPG

(229).JPG

(230).JPG



(231).JPG

(232).JPG

(233).JPG

(234).JPG

(235).JPG



(236).JPG



(237).JPG



(238).JPG



(239).JPG



(240).JPG



(241).JPG



(242).JPG



(243).JPG



(244).JPG



(245).JPG



(246).JPG



(247).JPG



(248).JPG



(249).JPG



(250).JPG



(251).JPG



(252).JPG



(253).JPG

Appendix E:
Provisional Discovery and Excavation Scotland (DES) entry;
Playing Fields, Callander Primary – Archaeological Evaluation

LOCAL AUTHORITY:	Loch Lomond and the Trossachs National Park
PROJECT TITLE/SITE NAME:	Playing Fields, Callander Primary School
PROJECT CODE:	AA 2059
PARISH:	Callander
NAME OF CONTRIBUTOR:	Ross Cameron
NAME OF ORGANISATION:	Addyman Archaeology
TYPE(S) OF PROJECT:	Archaeological Evaluation
NMRS NO(S):	None
SITE/MONUMENT TYPE(S):	None
SIGNIFICANT FINDS:	None
NGR (2 letters, 8 or 10 figures)	NN 62713 07639
START DATE (this season)	17/06/13
END DATE (this season)	19/06/13
PREVIOUS WORK (incl. DES ref.)	None
MAIN (NARRATIVE) DESCRIPTION: (May include information from other fields)	Addyman Archaeology were commissioned to complete an archaeological evaluation on the Playing Fields to the E of Callander Primary School in Callander, within Loch Lomond and the Trossachs National Park. The evaluation was completed as part of the planning process prior to the development of the site into a landscaped rugby pitch and all weather playing surface. 19 trenches were opened across the site and showed this to have undergone some degree of landscaping and alteration. No archaeological features or discoveries of any note were made.
PROPOSED FUTURE WORK:	None
CAPTION(S) FOR ILLUSTRS:	N/A
SPONSOR OR FUNDING BODY:	Stirling Council
ADDRESS OF MAIN CONTRIBUTOR:	Addyman Archaeology, St. Ninian's Manse, Quayside Street, Edinburgh, EH6 6EJ
EMAIL ADDRESS:	admin@addyman-archaeology.co.uk
ARCHIVE LOCATION (intended/deposited)	RCAHMS and WoSAS SMR (intended)