

# Glenside Farm

## Dumfries House Estate, Auchinleck

*East Ayrshire*

---

*Historic Building Recording and  
Archaeological Watching Brief during Demolition Works*

*for*

The Great Steward of Scotland's Dumfries House Trust

*April 2017*



*Glenside Farm, Dumfries House Estate (photo 310)*

---

## Addyman Archaeology

Archaeology   Heritage Consultancy   Architecture

## Addyman Archaeology

The Old Printworks, 77a Brunswick Street, Edinburgh, EH7 5HS  
admin@addyman-archaeology.co.uk  
0131 555 4678

# Glenside Farm

*Dumfries House Estate, Auchinleck, East Ayrshire*

---

## *Historic Building Recording and Archaeological Watching Brief during Demolition Works*

*Job number 2244.00*

*April 2017*

by Andrew Morrison

### *Contents*

### *Illustrations*

### *Executive Summary*

<b>1. Introduction</b>	<b>1</b>
i. General	1
ii. Setting and Geology	2
iii. Brief Map Regression	4
<b>2. Historic Building Recording</b>	<b>7</b>
i. General and Methodology	7
ii. The Steading	8
a. Structure 1	8
b. Building 2	9
c. Building 3	12
d. Structure 4	12
e. Structure 5	13
f. Structure 6	14
g. Building 7	15
h. Building 8	16
i. Structure 9	25
<b>3. Archaeological Watching Brief during Demolition Works</b>	<b>26</b>
i. General	26
ii. Methodology	26
iii. Results	26
a. Structure 1	26
b. Building 2	26
c. Building 3	27
d. Structure 4	27
e. Structure 5	28
f. Structure 9	28
g. Concrete Surfaces	30
<b>4. Archaeological Watching Brief during Site Preparation Works</b>	<b>30</b>
i. General	30
ii. Methodology	30
iii. Results	30

<b>5. Overall Conclusions and Recommendations</b>	<b>31</b>	
<b>6. Archiving</b>	<b>31</b>	
<b>Appendix A</b>	<b>Written Scheme of Investigation</b>	<b>32</b>
<b>Appendix B</b>	<b>Context Register</b>	<b>38</b>
<b>Appendix C</b>	<b>Photographic Register</b>	<b>39</b>
<b>Appendix D</b>	<b>Photographic Thumbnails</b>	<b>52</b>

## Illustrations

### List of Figures

<i>Figure 1 : Site Location</i>	3
<i>Figure 2 : Proposed Site Plan –Image copyright Dovecote Architecture and Design Ltd.</i>	4
<i>Figure 3 : Extract from ‘Roy’s Military Survey of Scotland. Lowland Scotland’ by William Roy. 1752-1755</i>	4
<i>Figure 4 : Extract from ‘Ordnance Survey 1<sup>st</sup> edition’ 25 inch to 1 mile. ‘Ayr Sheet XXXV.6’ Surveyed 1857, Published 1860. NLS (with site overlay)</i>	5
<i>Figure 5 : Extract from ‘Ordnance Survey 2<sup>nd</sup> edition Revision’. 25 inch to 1 mile. ‘Ayrshire 035.06’ Revised 1908, Published 1909. NLS (with site overlay)</i>	5
<i>Figure 6 : Extract from ‘Ordnance Survey RAF Air Photo Mosaic’ 6 inch to 1 mile.</i>	6
<i>Figure 7 : Glenside Farm with Development Area in Red (Google Earth, 2016).</i>	6
<i>Figure 8 : Glenside Farm Structures, as numbered during the building recording exercise</i>	7
<i>Figure 9 : Structure 1 location</i>	8
<i>Figure 10 : Building 2 location</i>	9
<i>Figure 11 : Building 3 location</i>	12
<i>Figure 12 : Structure 4 location</i>	13
<i>Figure 13 : Structure 5 location</i>	13
<i>Figure 14 : Structure 6 location</i>	14
<i>Figure 15 : Building 7 location</i>	15
<i>Figure 16 : Building 8 Location</i>	16
<i>Figure 17 : Building 8, Room Layout (©Dovecote Architecture)</i>	16
<i>Figure 18 : Structure 9 Location</i>	25

### List of Plates

<i>Plate 1 : Structure 1, from east (photo 484)</i>	8
<i>Plate 2 : Structure 1, concrete slab (photo 012)</i>	8
<i>Plate 3 : Building 2, south elevation (photo 470)</i>	9
<i>Plate 4 : Building 2, from southwest (photo 477)</i>	9
<i>Plate 5 : Building 2, Room A, south facing exterior (photo 029)</i>	10
<i>Plate 6 : Building 2, Room A, north facing interior (photo 055)</i>	10
<i>Plate 7 : Building 2, Room B, south facing exterior (photo 032)</i>	10
<i>Plate 8 : Building 2, Room B, south facing interior (photo 073)</i>	10
<i>Plate 9 : Building 2, Room B, east facing interior gable (photo 063)</i>	11
<i>Plate 10 : Building 2, Room C, west elevation (photo 081)</i>	11
<i>Plate 11 : Building 2, Room C, interior (photo 136)</i>	11
<i>Plate 12 : Building 3, south-east corner (photo 468)</i>	12
<i>Plate 13 : Building 3, interior (photo 126)</i>	12
<i>Plate 14 : Structure 4, superstructure (photo 475)</i>	13
<i>Plate 15 : Structure 4, interior surface (photo 295)</i>	13

<i>Plate 16 : Structure 5, in right of shot (photo 478)</i>	14
<i>Plate 17 : Structure 5, from west (photo 236)</i>	14
<i>Plate 18 : Structure 6, Slurry Tank from south east (photo 400)</i>	14
<i>Plate 19 : Building 7, from south west (photo 133)</i>	15
<i>Plate 20 : Building 7, south gable (photo 354)</i>	15
<i>Plate 21 : Building 7, interior (photo 360)</i>	15
<i>Plate 22 : Building 8, Farm House (photo 710)</i>	17
<i>Plate 23 : Building 8, Bothy and Store (photo 711)</i>	17
<i>Plate 24 : Building 8, Bothy, Store, Byre (photo 716)</i>	17
<i>Plate 25 : Building 8, Byre (photo 717)</i>	17
<i>Plate 26 : Building 8, Farm House, east gable</i>	17
<i>Plate 27 : Building 8, Farm House, south elevation (photo 493)</i>	17
<i>Plate 28 : Building 8, Farm House, east gable (photo 409)</i>	18
<i>Plate 29 : Building 8, Living Room (photo 552)</i>	18
<i>Plate 30 : Building 8, Living Room (photo 555)</i>	18
<i>Plate 31 : Building 8, Hall (photo 558)</i>	19
<i>Plate 32 : Building 8, Stair (photo 673)</i>	19
<i>Plate 33 : Building 8, Store and Kitchen (photo 579)</i>	20
<i>Plate 34 : Building 8, Kitchen (photo 580)</i>	20
<i>Plate 35 : Building 8, Wood lintels east of Kitchen (photo 616)</i>	20
<i>Plate 36 : Building 8, Dining Room (photo 626)</i>	21
<i>Plate 37 : Building 8, Dining Room (photo 618)</i>	21
<i>Plate 38 : Building 8, Dining Room, north wall (photo 621)</i>	21
<i>Plate 39 : Building 8, Family Room (photo 649)</i>	22
<i>Plate 40 : Building 8, Family Room (photo 654)</i>	22
<i>Plate 41 : Building 8, Bedroom 1 (photo 699)</i>	22
<i>Plate 42 : Building 8, Bedroom 2 (photo 688)</i>	22
<i>Plate 43 : Building 8, Box Room/Landing (photo 696)</i>	22
<i>Plate 44 : Building 8, Store and Bothy (photo 472)</i>	23
<i>Plate 45 : Building 8, Store interior (photo 666)</i>	23
<i>Plate 46 : Building 8, Bothy (photo 381)</i>	23
<i>Plate 47 : Building 8, Bothy interior (photo 384)</i>	23
<i>Plate 48 : Building 8, Bothy and Store, west-facing elevation (photo 287)</i>	24
<i>Plate 49 : Building 8, Byre, north-facing elevation (photo 291-4)</i>	24
<i>Plate 50 : Building 8, Byre, west gable (photo 364)</i>	24
<i>Plate 51 : Building 8, Byre interior (photo 365)</i>	24
<i>Plate 52 : Building 8, Byre, south-facing (photo 367)</i>	25
<i>Plate 53 : Building 8, south-facing elevation (photo 368)</i>	25
<i>Plate 54 : Structure 9 (photo 176)</i>	25
<i>Plate 55 : Structure 9 (photo 175)</i>	25
<i>Plate 56 : Structure 1, mid-demolition (photo 019)</i>	26
<i>Plate 57 : Structure 1, post-demolition (photo 140)</i>	26
<i>Plate 58 : Building 2, south facing section (photo 163)</i>	27
<i>Plate 59 : Building 2, Concrete skin below Room C</i>	27
<i>Plate 60 : Building 3, post-demolition (photo 147)</i>	27
<i>Plate 61 : Structure 4, post-demolition (photo 393)</i>	27
<i>Plate 62 : Structure 5, post-demolition (photo 327)</i>	28
<i>Plate 63 : Structure 9, Stone wall and surface, post-ex (photo 244)</i>	28
<i>Plate 64 : Structure 9, Cobbled surface (photo 246)</i>	29
<i>Plate 65 : Structure 9, Boundary wall (photo 253)</i>	29
<i>Plate 66 : Structure 9, post-demolition (photo 346)</i>	29

<i>Plate 67 : Post-concrete removal, South of Building 7 (photo 352)</i>	30
<i>Plate 68 : Road Widening, mid-ex (photo 402)</i>	30
<i>Plate 69 : Road Widening, post-ex (photo 404)</i>	30

Unless otherwise stated, all content is the copyright of Simpson & Brown *Architects* with Addyman Archaeology

# Glenside Farm

*Dumfries House Estate, Auchinleck, East Ayrshire*

---

## *Historic Building Recording and Archaeological Watching Brief during Demolition Works: March 2017*

### *Executive Summary*

Addyman Archaeology was commissioned by the Great Steward of Scotland's Dumfries House Trust to undertake a programme of archaeological works at Glenside Farm, part of the Dumfries House Estate, near Auchinleck, East Ayrshire. The archaeological works were part of a condition placed on a planning application for the refurbishment of a farmhouse, conversion of existing outbuildings, removal of redundant outbuildings, and the erection of new buildings to create a multi-purpose skills, arts, and crafts training facility with residential accommodation on the former steading site.

The Glenside farm steading is depicted on General Roy's Military Survey of Lowland Scotland map of 1752-55 as a grouping of four structures. The farmstead appears to have been altered, likely during the late 18<sup>th</sup> or early 19<sup>th</sup> centuries, to form two parallel structures flanking a central trackway (as depicted on the Ordnance Survey 1<sup>st</sup> edition of 1857); the evolution of the farmstead in this form has led up to the current layout of Glenside Farm, which includes a collection of four main buildings and five secondary structures.

A Basic building recording exercise was carried out on all of the farm structures prior to their alteration or demolition. Evidence of the earlier, pre-improvement farmstead survives in the farmhouse structure and opposite byre, with the farmhouse having been widened and elongated. The opposite byre has been heavily altered with little of the original fabric remaining, though a substantial amount of original fabric does survive within the east and north facing elevations of the farmhouse range.

The watching brief during demolition works did not uncover any archaeological deposits or features predating the Improvement farmstead, nor did it find evidence of the other two structures depicted on Roy's mid-18<sup>th</sup> century map. A section of drystone courtyard retaining wall and associated cobbled surface was uncovered to the west of the main farm building, and is thought to date to the farmstead's period of rebuild sometime in the late 18<sup>th</sup> or early 19<sup>th</sup> centuries.

### *1. Introduction*

#### *i. General*

Addyman Archaeology was contracted by The Great Steward of Scotland's Dumfries House Trust to undertake a programme of archaeological building recording and watching brief during the demolition works at Glenside Farm (KA12 2LP), part of the Dumfries House Estate, near Auchinleck in East Ayrshire (NGR NS 53813 21631). The archaeological works were required as part of a planning condition by the West of Scotland Archaeology Service (WoSAS, contact: Martin O'Hare) placed upon the planning application (16/0601/PP) for the: refurbishment of a farmhouse, conversion of existing outbuildings and removal of redundant outbuildings, and the erection of buildings and associated groundworks, to create a multi-purpose skills, arts and crafts training facility incorporating residential accommodation.

WoSAS has recommended that:

*'No development shall take place within the development site as outlined in red on the approved plan until the developer has secured the implementation of a programme of archaeological works in accordance with a written scheme of investigation which has been submitted by the applicant, agreed by the West of Scotland Archaeological Service, and approved by the Planning Authority. Thereafter the developer shall ensure that the programme of archaeological works is fully implemented and that all recording and recovery of archaeological resources within the development site is undertaken to the satisfaction of the Planning Authority in agreement with the West of Scotland Archaeology Service'.*

A Written Scheme of Investigation (WSI) was submitted and approved by Martin O'Hare of WoSAS, detailing the archaeological works to be carried out as part of the planning condition, and has been included in this report as *Appendix A*.

This Data Structure Report (DSR) represents the results of the archaeological building recording and watching brief during the demolition of redundant outbuildings, as well as the archaeological monitoring of preliminary groundworks carried out between the 30<sup>th</sup> of November and the 13<sup>th</sup> of December, 2016, with an additional site visit on the 28<sup>th</sup> of February, 2017. Archaeological works were carried out by Andrew Morrison, under cold, overcast to rainy weather conditions.

A record of the building recording and watching brief (*OASIS ID: addyman1-279456*) has been deposited with the Online Access to the Index of Archaeological Investigations (OASIS) website hosted by the Archaeological Data Service and with Discovery and Excavation in Scotland (DES), the annual publication of fieldwork by Archaeology Scotland.

This report contains several maps reproduced by permission of the Trustees of the National Library of Scotland (NLS). To view these maps online, please visit [www.nls.uk](http://www.nls.uk).

This report is prepared in accordance with standard Addyman Archaeology procedures and in line with the guidelines established by the Chartered Institute for Archaeologists (CIfA).

## *ii. Setting and Geology*

Located within the Dumfries House Estate, near Auchinleck, East Ayrshire, the development site at Glenside Farm encompasses an area of 1.99 hectares, and is roughly centred on NGR NS 53873 21616. The site is accessed from the north via Barony Road, is bound to the west by an unnamed burn, and to the north, west, and south by open, cultivated farmland. Glenside Farm consists of: a T-shaped structure encompassing a farm house, bothy, and byre, with lean-to structures at the north-west and south-west ends; four additional structures to the north; a brick pen and slurry tank; as well as associated cultivated field systems to the north, south, and east, as well as access tracks from the north, west, and east.

The underlying bedrock geology is sedimentary, of the Scottish upper coal measures formation, formed approximately 307 to 310 million years ago during the Carboniferous Period. The overlying superficial geology is a Devensian – Diamicton Glacial Till, formed up to 2 million years ago in the Quaternary period during Ice Age conditions; during this period, glaciers scoured the landscape, depositing moraines of till with outwash from seasonal meltwaters depositing sand and gravel.<sup>1</sup>

---

<sup>1</sup> Geological information taken from <http://mapapps.bgs.ac.uk/geologyofbritain/home.html> - 08/02/17



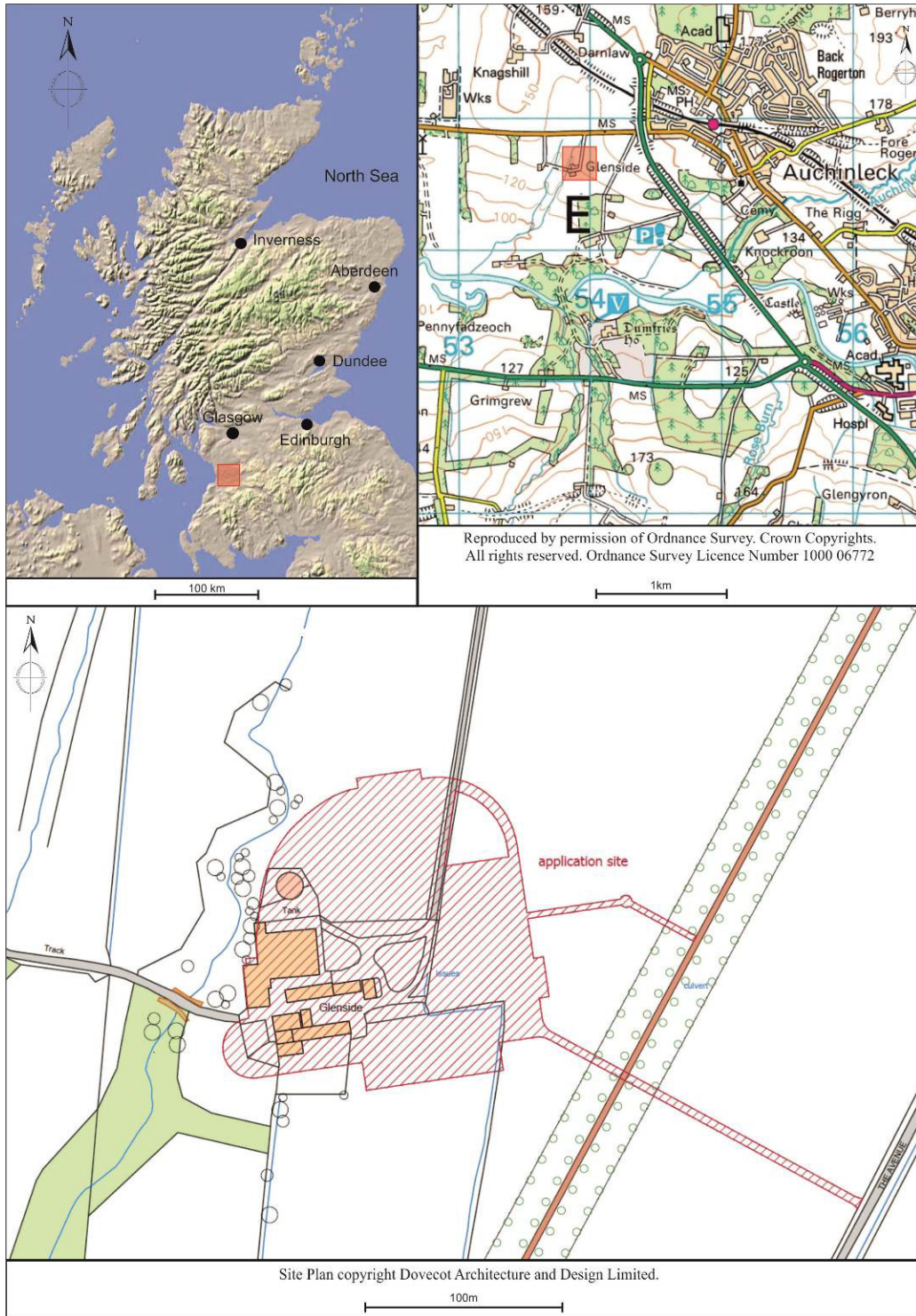


Figure 1 : Site Location



Figure 2 : Proposed Site Plan –Image copyright Dovecote Architecture and Design Ltd.

iii. Brief Map Regression



Figure 3 : Extract from 'Roy's Military Survey of Scotland. Lowland Scotland' by William Roy. 1752-1755  
© The British Library Board. All Rights Reserved (Roy Military Survey of Scotland)

In order to properly assess the archaeological potential of the development site prior to works commencing, a brief map regression was undertaken, consulting materials readily available online through the *National Library of Scotland's Map Resource*, as well as *Google Earth*. Roy's Lowland Military Survey of Scotland, surveyed from 1752 to 1755 (**Figure 3**), is the earliest map to show Glenside Farm in detail. The map shows a grouping of four structures north of Pennyland, bound by a burn to the west, and surrounded by cultivated fields. This map roughly depicts Glenside Farm as it existed pre-improvement, though the placement and number of structures shown may not be accurate.

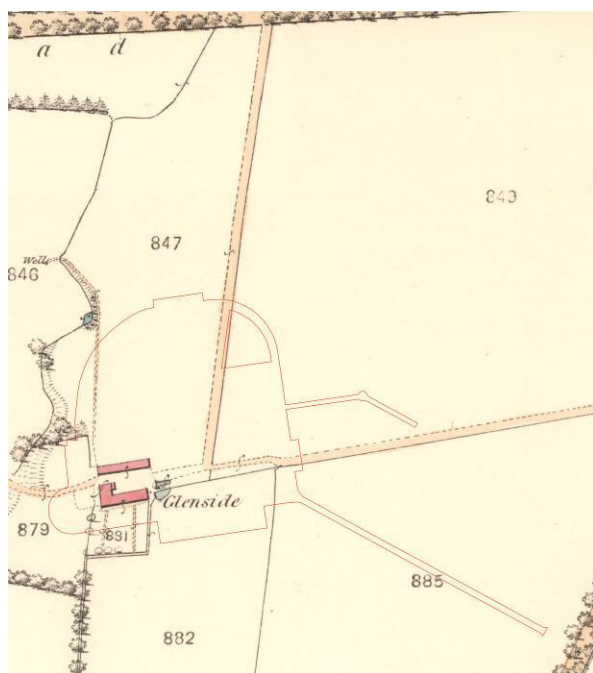


Figure 4 : Extract from 'Ordnance Survey 1<sup>st</sup> edition' 25 inch to 1 mile. 'Ayr Sheet XXXV.6' Surveyed 1857, Published 1860. NLS (with site overlay)

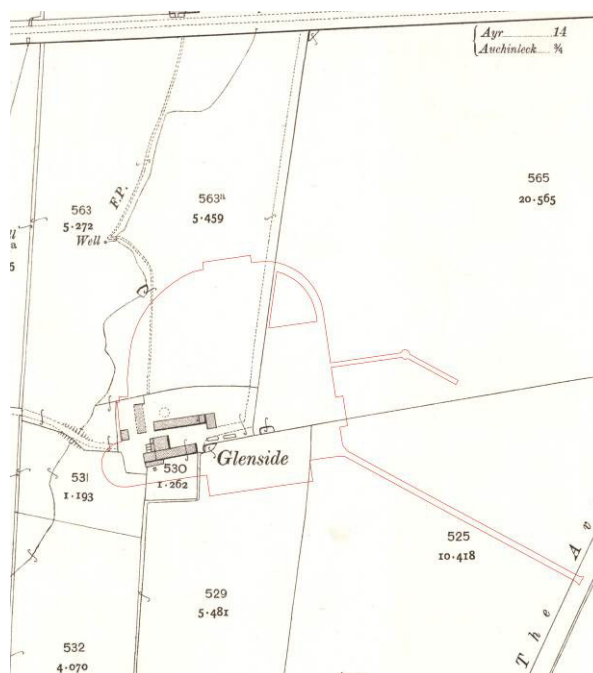


Figure 5 : Extract from 'Ordnance Survey 2<sup>nd</sup> edition Revision'. 25 inch to 1 mile. 'Ayrshire 035.06' Revised 1908, Published 1909. NLS (with site overlay)

The 1857 Ordnance Survey 1<sup>st</sup> edition (**Figure 4**) shows the layout of the farmstead largely as it exists today, with access from Barony Road to the north, and an arrangement of two facing structures straddling an east-west orientated trackway, with burn to the west. The north and south structures shown in this edition represent building numbers 2 and 8 respectively, as assigned during the building recording exercise (see **Figure 8**).

The 1908 Ordnance Survey 2<sup>nd</sup> edition revision (**Figure 5**) shows a number of changes to have taken place at the farmstead over a fifty year period, including an eastward extension to Building 2, and construction of building 3 to its east, alterations to the west range of Building 8, as well as structures appearing to the west that may represent early phases of Building 7, and Structure 1 (see **Figure 8**). Field systems remain relatively unchanged through this period, with only slight variations to the boundaries.

The RAF aerial image from May 1950 (**Figure 6**) shows the farmstead largely as it exists today (compare with the Google Earth image from 2016- **Figure 7**), with the notable difference being the arrangement of three north-south orientated pitched roofs along the west range building 8, as well as variations to structures 1 and 7, in the western half of the site. Both the 1950 and 2016 images show evidence of cultivation in the form of rig and furrow in the surrounding north, south, and eastern field systems.



*Figure 6 : Extract from 'Ordnance Survey RAF Air Photo Mosaic' 6 inch to 1 mile. Surveyed May 1950, Published 1951. NLS (with site overlay)*



*Figure 7 : Glenside Farm with Development Area in Red (Google Earth, 2016).*

## 2. Historic Building Recording

### i. General and Methodology

The first phase of archaeological works on site consisted of a Basic-level Historic Building Record of all structures prior to their demolition or alteration. This included a complete photographic record of the exterior of the buildings, the buildings within their setting, and of the building's interiors where possible. The building recording was undertaken prior to and during the demolition works, between the 30<sup>th</sup> of November and the 13<sup>th</sup> of December, 2016, with an additional site visit to record the interior of Building 8 on the 28<sup>th</sup> of February, 2017. Photographs were taken using a FujiFilm XP for the majority of the recording, with a Nikon Coolpix P500 used to record Building 8's interior. The demolition plan provided (**Figure 8**) shows the structures numbered 1-9 as recorded; the dark grey structures (7 and 8) were to be retained, while the lighter, hashed structures (1-6, and 9) were scheduled for demolition. A record and summary of each structure is provided below.

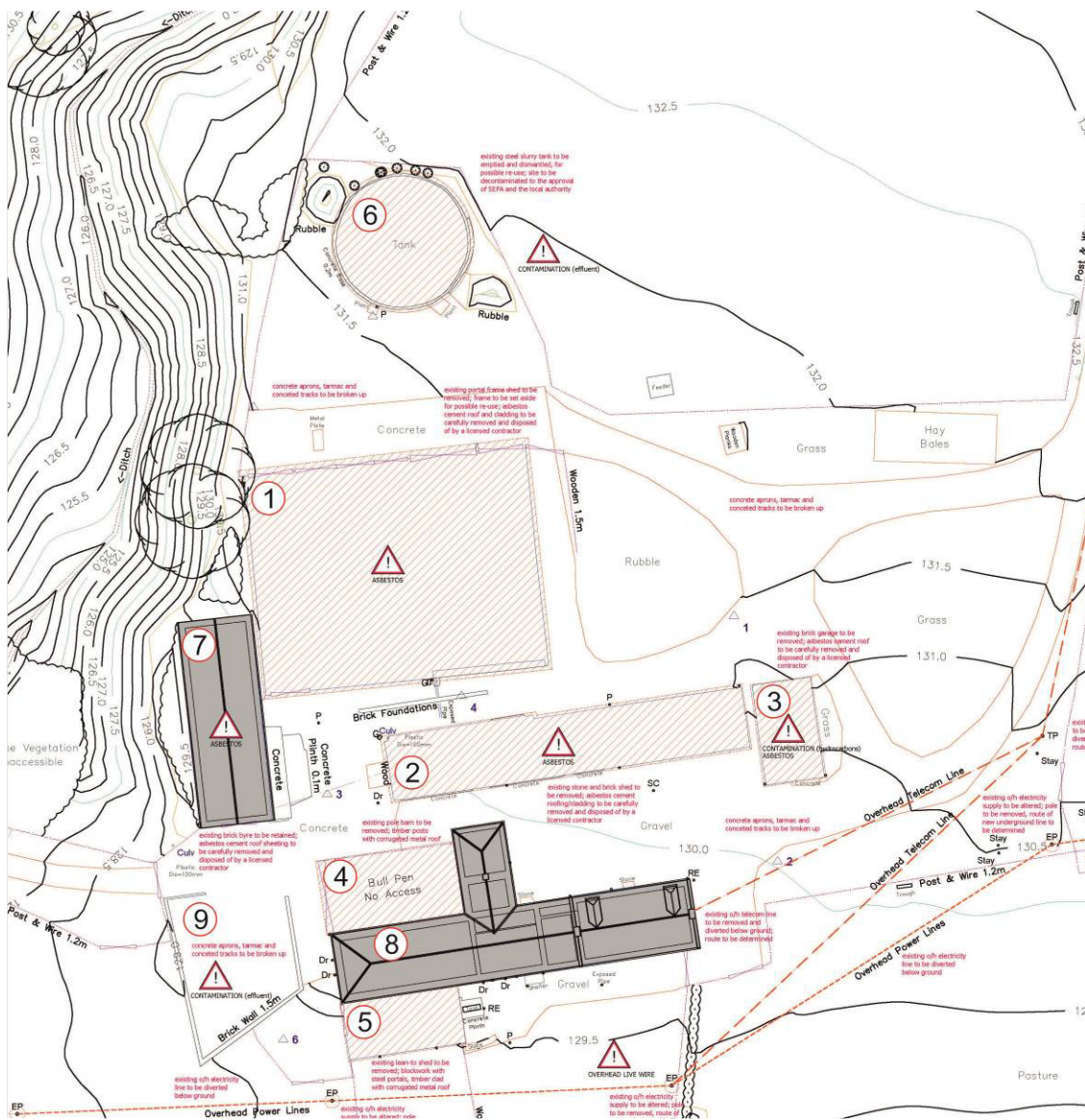


Figure 8 : Glenside Farm Structures, as numbered during the building recording exercise (Addyman Archaeology after Dovecot Architecture and Design Ltd.)

ii. *The Steading*

a. *Structure 1*

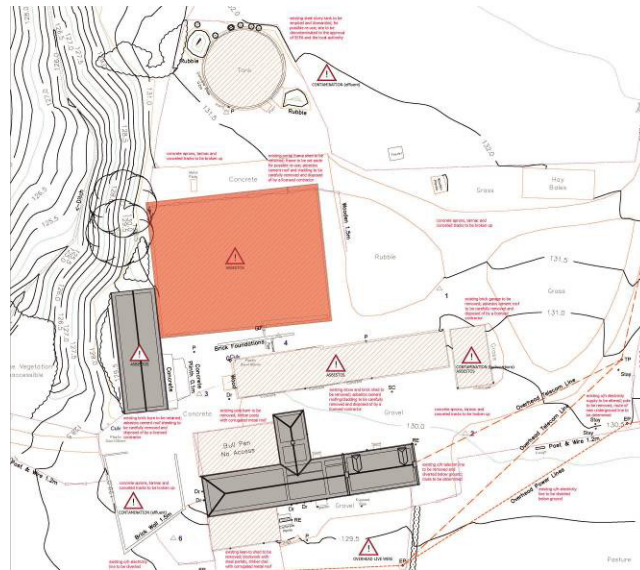


Figure 9 : Structure 1 location



Plate 1 : Structure 1, from east (photo 484)



Plate 2 : Structure 1, concrete slab (photo 012)

Located in the north-west region of the steading, Structure 1 was an open sided, steel beamed structure with a pitched corrugated roof, and poured concrete slab foundation. Though photographed at an earlier date, the superstructure was removed prior to the survey taking place, so was not fully recorded. Map evidence shows a, likely earlier, rectangular structure in this location on the Ordnance Survey 2<sup>nd</sup> edition revision of 1909 (see **Figure 5**), while the 1950 Air Photo (**Figure 6**) depicts an earlier phase of the current structure, prior to a later eastern extension. The Google Earth image from May 2016 (**Figure 7**) shows the structure as still being roofed.

The surviving elements showed a poured concrete slab base incorporating regularly spaced, vertical steel beams down the centre, as well as the western, and eastern edges. The eastern half of the platform was raised approximately 0.20m higher than the western half (**Plate 2**).

b. Building 2

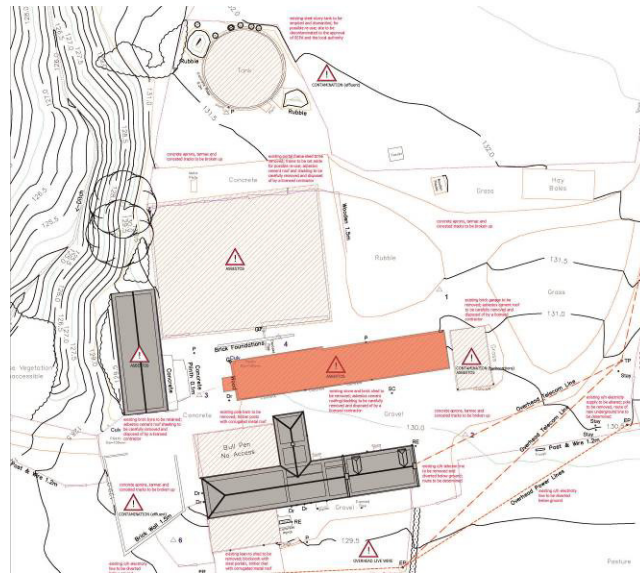


Figure 10 : Building 2 location



Plate 3 : Building 2, south elevation (photo 470)



Plate 4 : Building 2, from southwest (photo 477)

Orientated roughly east-west, Building 2 was the long, linear range located directly opposite the steading farmhouse to the north (**Figure 10**). Appearing on the 1<sup>st</sup> edition Ordnance Survey map of 1857 (**Figure 4**), this building may have pre-dated the improvement period, and may represent one of the structures indicated on Roy's Military Survey map of 1752-55 (**Figure 3**). The Ordnance Survey 2<sup>nd</sup> edition map of 1895 (**Figure 5**) indicates a recent extension at the south end of the building, now extending beyond the line of the farmhouse to the south.

Unroofed at the time of the main survey, the building showed multiple phases of rebuild and heavy alterations with little evidence of original fabric remaining. Original fabric was likely to have survived within the south-facing elevation, as well as the upstanding gable dividing the byre to the west from the rest of the structure, as well as within a small section of the north-facing elevation. For the purposes of the survey, the building was divided into three rooms: the eastern room 'Room A', was the late 19<sup>th</sup> century extension; the central room was referred to as 'Room B'; while the western room, or byre, was referred to as 'Room C'.

### Room A



Plate 5 : Building 2, Room A, south facing exterior  
(photo 029)



Plate 6 : Building 2, Room A, north facing interior  
(photo 055)

Room A was constructed of a mix of dressed stone and re-used rubble, and was separated from Room B by a brick dividing wall. Accessed via doorway to the south, the room had a single window built into the south elevation (*Plate 5*). The north facing elevation within the room's interior showed evidence of alteration, with the appearance of quoining and a later blocking within the elevation, likely indicating a formerly open façade, possibly once used as a garage or storage bay.

### Room B



Plate 7 : Building 2, Room B, south facing exterior  
(photo 032)



Plate 8 : Building 2, Room B, south facing interior  
(photo 073)

Room B was divided from Room C by a large, upstanding gable, and from Room A by an inserted brick partition wall. The upstanding gable contained multiple phases of repair and alteration (*Plate 9*), particularly relating to the roof structure, and was likely an original feature contemporaneous with the construction of the building. Room B contained two windows with splayed reveals in the northern elevation (*Plate 8*), and a single entrance in the southern elevation. A former partition, later removed, would have divided the room at a point between the two windows to the north, and meeting the southern wall just east of the door. Early building fabric appears to have survived in small amounts within the interior gable, and made up a large amount of the west half of the building's south facing elevation, having been replaced by more formal, dressed stone in the later alterations to the building's eastern half (*Plate 7*).





Plate 9 : Building 2, Room B, east facing interior gable (photo 063)

Room C



Plate 10 : Building 2, Room C, west elevation (photo 081)



Plate 11 : Building 2, Room C, interior (photo 136)

Room C formed the western half of Building 2, and was lately in use as a Byre. This section of the structure had been heavily modified, with the small amounts of remaining early building fabric confined to the upstanding southern elevation. The west and north elevations had been removed to create an open-sided, steel beam façade (**Plate 10**), with the interior excavated down to create a lower slurry pit, capped by a concrete slat floor surface (**Plate 11**). Former window and door openings within the southern elevation had been blocked with mortared brick, possibly associated with a phase of repairs to the raised doorway within the east interior gable.

c. *Building 3*

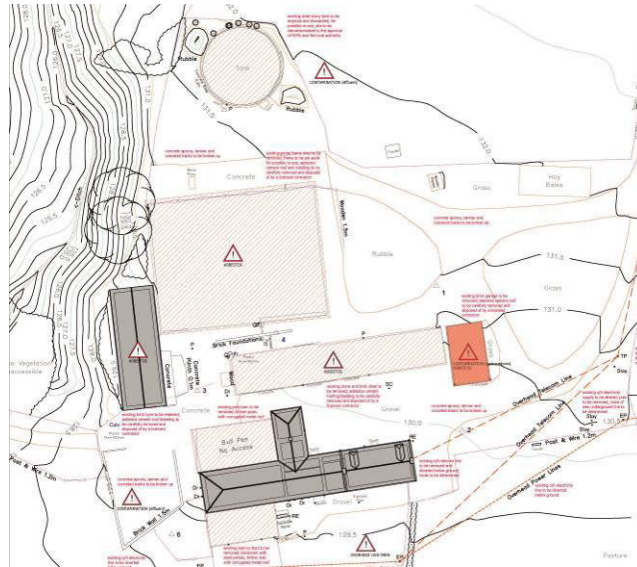


Figure 11 : Building 3 location

Building 3 was located directly east of Building 2 (*Figure 11*), and was orientated roughly north/south. Rectangular in plan, the building was a simple, windowless, brick-built structure atop a poured concrete foundation, with high pitched roof and large sliding steel door within the south elevation. Likely a single phase, Building 3 first appears on the 1895 Ordnance Survey 2<sup>nd</sup> edition (*Figure 5*), though the ‘DICO’ froged bricks noted during demolition suggest a post-1920’s build-date<sup>2</sup>; it is possible that the recorded structure may have replaced an earlier structure previously occupying the same footprint.



Plate 12 : Building 3, south-east corner (photo 468)



Plate 13 : Building 3, interior (photo 126)

d. *Structure 4*

Structure 4 refers to the pen located in the north-west corner of the farmhouse range (*Figure 12*). Identified as a Bull Pen on the architectural plans, the structure utilised Building 8 for its eastern and southern elevations, and was open to the north and west. The superstructure (removed prior to surveying) consisted of large, circular timber post uprights, and was capped by a pitched corrugated roof (*Plate 14*). Sunken approximately 0.20m from the ground level to the north, the interior surface was made up of soil and mud to the east, brick along the south wall, and poured concrete in the remaining area, with a drainage channel running down the centre (*Plate 15*).

<sup>2</sup> <http://www.scottishbrickhistory.co.uk/scottish-brickmarks-a-h/> -accessed 15/04/17

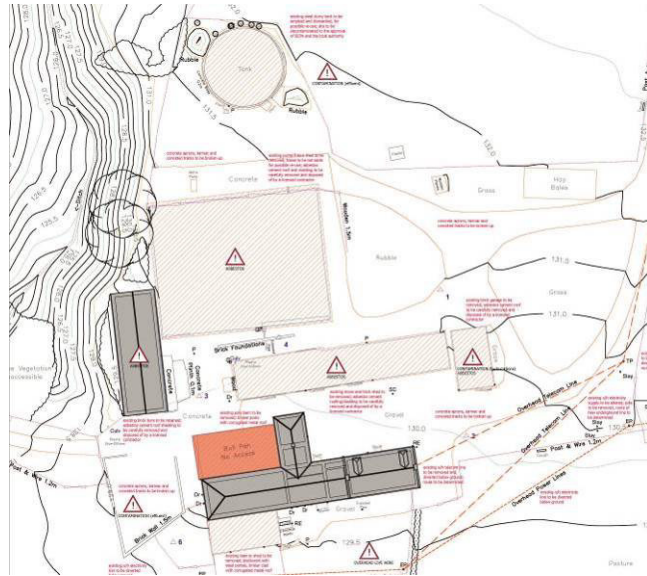


Figure 12 : Structure 4 location



Plate 14 : Structure 4, superstructure (photo 475)



Plate 15 : Structure 4, interior surface (photo 295)

e. Structure 5

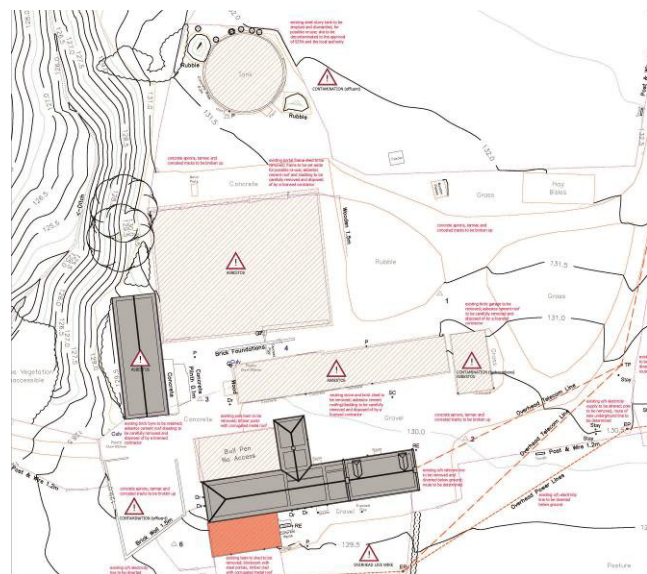


Figure 13 : Structure 5 location



Plate 16 : Structure 5, in right of shot (photo 478)



Plate 17 : Structure 5, from west (photo 236)

Similar to Structure 4, Structure 5 was an open-sided, lean-to type build that utilised the southern elevation of Building 8 as its north wall (**Figure 13**). Built of large, upright wooden beams and a sloped roof (**Plate 16**), the structure contained a vehicle entrance within the north half of the western elevation, and was enclosed by a low cinder block wall along the west, south, and east elevations; the base of the structure consisted of a poured concrete pad (**Plate 17**).

f. Structure 6

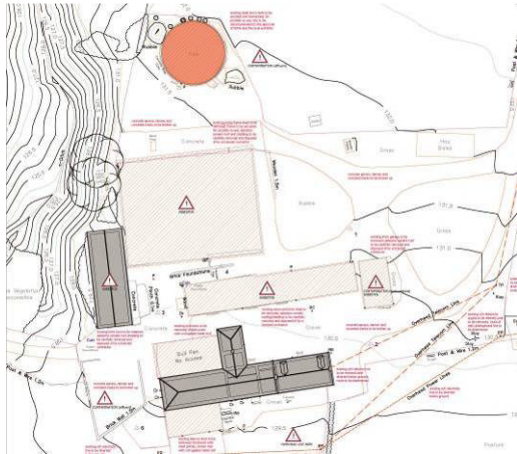


Figure 14 : Structure 6 location



Plate 18 : Structure 6, Slurry Tank from south east (photo 400)

Structure 6 represents the circular Slurry Tank at the north end of the farmstead (**Error! Reference source not found.**). There was no upstanding structure at this location, and the base could not be surveyed due to its use for the storage of asbestos removed during the pre-demolition works.

g. *Building 7*

Building 7 is a long, rectangular, brick-built byre that is located at the western extent of the farmstead, north of the trackway connecting Glenside to the Hapland steading to the west, and along the sloping banks of the burn that bounds the development area (**Error! Reference source not found.**). The Ordnance Survey 2<sup>nd</sup> edition revision of 1908 (*Figure 5*) shows a smaller, square structure in the location of Building 7, that does not appear on the 1895 OS map, and seems to have been demolished prior to the construction of the current structure. The RAF aerial photo of 1950 (*Figure 6*) shows Building 7 to be upstanding at that point, placing its construction sometime in the first half of the 20<sup>th</sup> century.

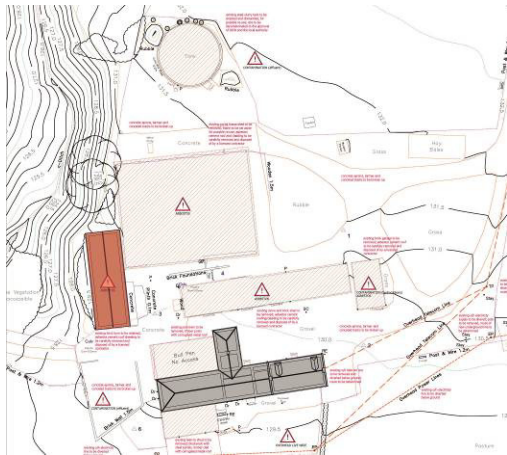


Figure 15 : Building 7 location



Plate 19 : Building 7, from south west (photo 133)

Building 7 is a single-phase, brick-built byre, with high-pitched corrugated roof (likely asbestos) over wooden beams. There is an entrance within the east elevation, and the north and south gables both have high windows and ground-level openings with fixtures in place to accommodate steel sliding doors. The larger bay opening in the south gable has been altered, with the bricking up of a doorway to the east of the opening, as well as the bricking-up of the west side to reduce the opening's width; a reused track rail has been positioned above the opening to act as a lintel (*Plate 20*).

The interior of the structure is of concrete, open plan with no internal partitions. Raised platforms line the western and eastern walls, with a lower passageway down the centre and to the opening in the eastern elevation. Painted numbers along the long walls denote individual 'bays' (*Plate 21*) – a possible indicator that this building may have been used for dairying.



Plate 20 : Building 7, south gable (photo 354)



Plate 21 : Building 7, interior (photo 360)

*h. Building 8*

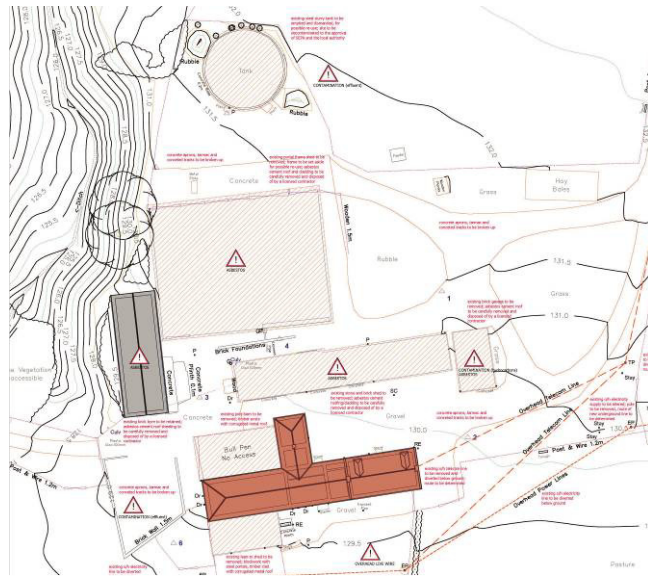


Figure 16 : Building 8 Location

GROUND FLOOR PLAN  
EXISTING  
1:100



UPPER FLOOR PLAN  
EXISTING  
1:100

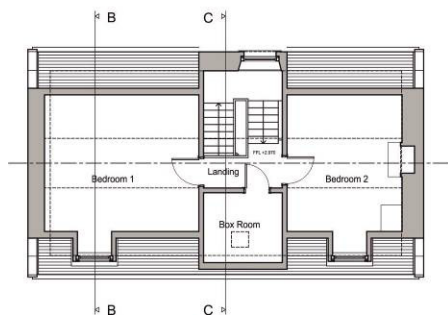


Figure 17 : Building 8, Room Layout (©Dovecote Architecture)



Plate 22 : Building 8, Farm House (photo 710)



Plate 23 : Building 8, Bothy and Store (photo 711)



Plate 24 : Building 8, Bothy, Store, Byre (photo 716)



Plate 25 : Building 8, Byre (photo 717)

Building 8 is a 'T' shaped structure at the southern extent of the farmstead, and is a combination of farmhouse, byre, store, and what is described as a bothy. This building is shown on the 1<sup>st</sup> edition OS map of 1857 as an 'L' shaped structure, adjacent to a linear structure representing Building 2 (**Figure 4**). Earlier building fabric noted within the eastern half of the structure indicates a pre-improvement phase, and may represent one of the structures indicated on Roy's Lowland Military Survey of 1752-1755 (**Figure 3**).

#### *Farm House*



Plate 26 : Building 8, Farm House, east gable (photo 719)



Plate 27 : Building 8, Farm House, south elevation (photo 493)

The farmhouse in Building 8 is a small, two-storey cottage, with three bays on the ground floor, and two dormer windows in the north elevation's upper storey (*Plate 22*). The cottage is a mix of mortared stone rubble and dressed stone construction, with an earlier building phase evident within the east gable and north elevation. The building has been enlarged (likely during the agricultural improvement period of the 18<sup>th</sup> and 19<sup>th</sup> centuries) by extending the width of the building to the south, and by raising the wall height and adding an upper storey. The earlier phase and later alteration can clearly be seen within the fabric of the east gable, with a series of dressed quoins marking the former south elevation and roof pitch. The image below (**Error! Reference source not found.**) shows a vertical line of dressed quoins set within the building's fabric to the right of the photo scale, rising to the pitch of the former single storey roof; the rubble construction can be followed across the gable to the north-east corner, where the same dressed quoins mark the current corner of the building.



*Plate 28 : Building 8, Farm House, east gable (photo 409)*

### *Living Room*



*Plate 29 : Building 8, Living Room (photo 552)*



*Plate 30 : Building 8, Living Room (photo 555)*



The easternmost room within the ground level of the farmhouse is marked on the architectural plans as the living room. Within this room, there is clear evidence of the building's earlier phase, with original fabric surviving in the south and west facing elevations. The west facing elevation, pictured in *Plate 29* above, shows a blocked door immediately south of the fireplace, with wooden lintel still in situ. Alterations have been made to the north of the fireplace, to create a recess within the wall fabric for storage.

A brick partition wall forms the east facing elevation, most likely dating to the remodelling of the house, and acts to form a hall and stairwell out of the once larger room. The south facing elevation contains a single window with splayed reveal, inserted into the earlier wall fabric. The north facing wall is a later phase associated with the building's remodelling, and contains a single window, also with splayed reveal, opposite the window to the north. Two phases of sleeper walls were recorded beneath the floorboards, with two rows of earlier, rubble and slate sleepers, flanked by two outer rows of cinder block sleepers (*Plate 30*).

### *Hall and Stair*



*Plate 31 : Building 8, Hall (photo 558)*



*Plate 32 : Building 8, Stair (photo 673)*

The hall and stair is accessed via the entrance within the north elevation, and is situated between the living room to the east, and kitchen and store to the west- separated by the brick partition walls created during the secondary phase of building remodelling (*Plate 31*). The brick partition walls appear to be a single phase, and abut the front entrance door jambs. The staircase (with decorative iron railing) is lit by a window with splayed reveals in the south wall, and accesses the upper storey via a landing (*Plate 32*).

### *Kitchen and Store*

The kitchen store is located below the first landing of the stair, and is separated from the kitchen by a brick partition wall. Accessed via the kitchen, the store is lit by a small square window (*Plate 33*). A second store was illustrated in the architectural plans in the northeast corner of the kitchen, but had been removed at the time of the survey.

The kitchen is located to the west of the front entrance, and forms the west bay of the main house. The kitchen' north wall contains the mortared rubble fabric of the earlier structure with an inserted window with splayed reveal. The south wall is of the later dressed stone dating to the building's remodelling, with single window opposite the other window to the north. The west wall of the kitchen

contains a high degree of original wall fabric, with later alterations and repairs, especially to the south end where the building has been extended; the south end of the wall contains a passage through to the dining room. A large fireplace and niche have been inserted into the east-facing elevation, both likely dating to the building's remodelling (**Plate 34**). The passage at the north end of the wall is a feature original feature dating to the building's first phase, with timber lintels still in situ (**Plate 35**); the passage on the architectural plans formed a hallway leading past the dining room to the family room, though at the time of the survey, opened into the dining room.



*Plate 33 : Building 8, Store and Kitchen (photo 579)*



*Plate 34 : Building 8, Kitchen (photo 580)*



*Plate 35 : Building 8, Wood lintels east of Kitchen (photo 616)*

### Dining Room



Plate 36 : Building 8, Dining Room (photo 626)



Plate 37 : Building 8, Dining Room (photo 618)



Plate 38 : Building 8, Dining Room, north wall (photo 621)

The dining room is located west of the kitchen range, and is accessed via the passage in the south end of the east wall. The north partition wall shown on the architectural plans (**Figure 17**) separating the dining room from the hallway has been removed. The east and north wall of the dining room contain earlier building fabric with later phase rebuild and alterations, while the south and west walls date to the building's remodelling.

Evidence of an earlier fireplace and niche, now blocked, exists within the dining room's east wall (**Plate 36**), while a possible former entrance within the north wall has been altered to form a window with splayed reveals (**Plate 38**). The south and west wall are a later build; the south wall contains a small window, while the west wall contains a fireplace towards the southern end.

### Family Room/ Bathroom

The family room and bathroom (as marked on the architectural plans -**Figure 17**), is located between the dining room to the east, and the byre to the west (**Plate 40**). There is an exterior entrance to the family room within the south wall, and the bathroom has been created in the room's southwest corner (**Plate 39**). The family room and bathroom are later additions, likely within the eastern end of a once longer byre, and there is evidence of an earlier building fabric within the structure's north wall.



Plate 39 : Building 8, Family Room (photo 649)



Plate 40 : Building 8, Family Room (photo 654)

### Upper Floor



Plate 41 : Building 8, Bedroom 1 (photo 699)

The upper floor of the farmhouse was added during the building's remodelling, likely prior to or during the first half of the 19<sup>th</sup> century, and is accessed via the staircase opposite the front entrance. Bedroom 1 (**Plate 41**) is located at the east end of the building, and is separated from Bedroom 2 (**Plate 42**) at the west end by a box room and landing (**Plate 43**). Bedroom 1 contains a brick-blocked fireplace within the east gable, while Bedroom 2's fireplace remains open. Both bedrooms are lit by a single dormer window each, and the boxroom is lit by an inserted skylight.



Plate 42 : Building 8, Bedroom 2 (photo 688)



Plate 43 : Building 8, Box Room/Landing (photo 696)

### Exterior Store and Bothy



Plate 44 : Building 8, Store and Bothy (photo 472)



Plate 45 : Building 8, Store interior (photo 666)

Forming the north/south orientated range of Building 8 are the external store and bothy (**Plate 44**), which are first shown on the Ordnance Survey 1<sup>st</sup> edition map of 1857 (**Figure 4**) and may predate the improvement farmstead period. Originally double the width, the structure has been reduced to the west, evidence of which survives as remnants of the wall return, still visible within the north-facing wall of the byre (**Plate 49**), and in the brick repairs to the northwest corner of the bothy (**Plate 48**).

The interior of the store (**Plate 45**) shows that the west wall abuts the north wall of the original east/west structure, with no internal access to the family room to the south. The bothy is accessed via the north facing elevation (**Plate 46**), has a single window in the eastern wall, is floored with flags, and has a fireplace within the partition wall dividing the bothy from the store room to the south (**Plate 47**).



Plate 46 : Building 8, Bothy (photo 381)



Plate 47 : Building 8, Bothy interior (photo 384)

### Byre

The byre forms the western range of Building 8. The remnants of the wall return visible within the north facing elevation (**Plate 49**) likely marks the original western extent of the structure as shown in the Ordnance Survey 1<sup>st</sup> edition map of 1857 (**Figure 4**). The 1895 Ordnance Survey 2<sup>nd</sup> edition shows a new westward extension to the byre (also visible on the 1908 OS revision **Figure 5**), at which point it would seem that the wall height was also increased. The northwest corner, west, and south facing elevations of the byre appear to be a later rebuild, with the occasional dressed quoin visible within the south elevation (**Plate 52**). Entrances to the windowless byre are through the family room, and from the north and west elevations.



Plate 48 : Building 8, Bothy and Store, west-facing elevation (photo 287)



Plate 49 : Building 8, Byre, north-facing elevation (photo 291-4)



Plate 50 : Building 8, Byre, west gable (photo 364)



Plate 51 : Building 8, Byre interior (photo 365)



Plate 52 : Building 8, Byre, south-facing (photo 367)



Plate 53 : Building 8, south-facing elevation (photo 368)

i. Structure 9

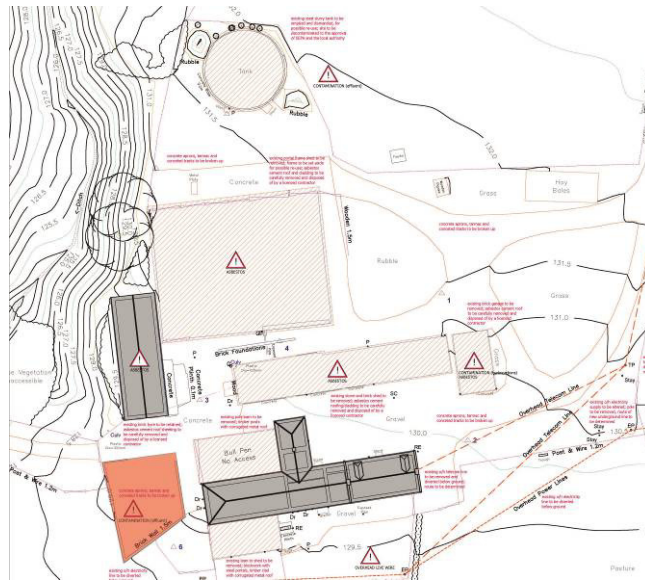


Figure 18 : Structure 9 Location



Plate 54 : Structure 9 (photo 176)



Plate 55 : Structure 9 (photo 175)

Structure 9 is a brick and concrete walled enclosure to the west of Building 8, and south of Building 7. Open to the north, the western half of the structure is brick wall, while the eastern half is a concrete wall overlying a low, earlier drystone wall. The enclosure surface is poured concrete, and was lately used to store manure.

### 3. *Archaeological Watching Brief during Demolition Works*

#### i. *General*

As part of the archaeological condition placed on the planning application by WoSAS, an archaeological watching brief was required during the demolition of structures on site. The farmstead elements scheduled for demolition included: Structure 1, Buildings 2 and 3, Structures 4, 5, and 9, as well as the concrete surfaces between the buildings. The watching brief was carried out by Andrew Morrison, concurrently with the building recording exercise, and was carried out between the 30<sup>th</sup> of November and the 13<sup>th</sup> of December under overcast and cold conditions.

#### ii. *Methodology*

The building demolition, foundation excavation, and associated groundworks were undertaken using a Hyundai HX300L tracked excavator fitted with a toothed bucket. Demolition of each structure took place after it had been fully photographed, first by knocking in the walls and gables, then removing the rubble from the building base. Once the rubble was removed the building's foundations were lifted, with the underlying deposits recorded archaeologically before being filled-in or levelled by the machine.

#### iii. *Results*

##### a. *Structure 1*



Plate 56 : Structure 1, mid-demolition (photo 019)



Plate 57 : Structure 1, post-demolition (photo 140)

The concrete slab of Structure 1 (**Figure 9**) was demolished on the 30<sup>th</sup> of November, and was found to overly a bedding deposit of mixed blaze and brick rubble atop a grey-brown to orangey-red clay natural (**Plate 56**). The steel uprights were set into concrete bases cut into the natural clay subsoil. No earlier features or deposits were noted beneath Structure 1, and it seems likely the ground was levelled prior to construction.

##### b. *Building 2*

Building 2 (**Figure 10**) was demolished on the 1<sup>st</sup>, 2<sup>nd</sup>, and 5<sup>th</sup> of December, starting with the eastern end, and finishing with the removal of the slurry tank below Room C to the west. The building's foundations were found to sit directly atop the underlying clay, and were terraced into the sloping ground to the north, with larger boulders acting as a form of retaining wall. The floor surface within Room A was brick overlying an ashy/cinder bedding deposit atop the underlying clay, while the floor surface within Room B was poured concrete overlying clay. The interior of Room C was created by digging down into the underlying clays, in order to accommodate the concrete slurry tank inserted within the building (**Plate 59**). No earlier features or deposits were noted beneath Building 2.





Plate 58 : Building 2, south facing section (photo 163)



Plate 59 : Building 2, Concrete skin below Room C (photo 273)

c. Building 3



Plate 60 : Building 3, post-demolition (photo 147)

Building 3 (*Figure 11*) was demolished on the 1<sup>st</sup> of December 2016, immediately prior to the commencement of the Building 2 demolition. The concrete slab was overlying a pebble bedding deposit, with the whole structure terraced into the sloping ground to the north (*Plate 60*). No earlier features or deposits were noted beneath Building 3.

d. Structure 4



Plate 61 : Structure 4, post-demolition (photo 393)

The demolition of the concrete pad making up Structure 4 revealed traces of the former wall extending from the north facing elevation, and a brick surface abutting the northwest end of the byre. No additional features or deposits were noted.

e. Structure 5



Plate 62 : Structure 5, post-demolition (photo 327)

Structure 5, located to the south of the byre (**Figure 13**) was demolished on the 5<sup>th</sup> of December 2016. The removal of the concrete slab revealed an underlying bedding deposit of stone and rubble overlying cultivation soils, as well as the rubble remnants of a possible red sandstone wall or lean-to structure (**Plate 62**), potentially depicted on the Ordnance Survey 2<sup>nd</sup> edition of 1895, and 2<sup>nd</sup> edition revision of 1908 (**Figure 5**).

f. Structure 9



Plate 63 : Structure 9, Stone wall and surface, post-ex (photo 244)



Plate 64 : Structure 9, Cobbled surface (photo 246)



Plate 65 : Structure 9, Boundary wall (photo 253)

Structure 9 (**Figure 18**) was demolished between the 2<sup>nd</sup> and the 6<sup>th</sup> of December 2016. The concrete wall overlying the drystone wall was removed first so that the earlier feature could be properly recorded; following this, the brick wall was removed before the concrete surface was lifted.

Orientated northeast/southwest, the earlier drystone wall measured approximately 6.0m in length, by 0.50-0.60m in width, and 0.50m in height (**Plate 63**). The wall was of un-bonded stone rubble, with some worked and weathered sandstone reuse noted. Thought to be a courtyard retaining wall associated with the Building 8 byre extension, the wall was abutted by a cobbled surface to the south (**Plate 64**) and the Structure 9 brick wall to the southwest.

The removal of the concrete surface within Structure 9 revealed a silty grey gravel overlying an earlier concrete surface, which, in turn, overlay a mix of stone/gravel, and cobble fragments within a black/wet silty clay atop the natural clay subsoil (**Plate 66**).



Plate 66 : Structure 9, post-demolition (photo 346)

g. *Concrete Surfaces*



Plate 67 : Post-concrete removal, South of Building 7 (photo 352)

The concrete surfaces east and north of Structure 9, between Buildings 7 and 8, was removed on the 6<sup>th</sup> of December 2016. The concrete south of building 7 was noted to overly a mix of rounded pebbles and sealed topsoil, with no evidence of cobbles (*Plate 67*).

4. *Archaeological Watching Brief during Site Preparation Works*

i. *General*

Following on from the Building Recording and Watching Brief during Demolition stage of works, a watching brief of the site preparation works was required, involving the widening of the main site access road from Barony Road to the north. The watching brief was undertaken by Andrew Morrison, and took place on the 13<sup>th</sup> of December under dry but overcast conditions.

ii. *Methodology*

The vegetation and topsoil was stripped to a width of approximately 2.0m the west of the existing track, with the overall track level then reduced and ‘pulled-in’ to the stripped area, thereby widening the road. Works were carried out using a JCB 308E tracked excavator, fitted with a 1.2m wide bladed bucket.

iii. *Results*

The road make-up was a mix of redeposited soil, rubble, and industrial waste material, reaching a height of approximately 1.0m above the surrounding topsoil. Stripping to the west of the road did not extend below the level of the topsoil/cultivation soil, and no archaeological finds or features were noted.



Plate 68 : Road Widening, mid-ex (photo 402)



Plate 69 : Road Widening, post-ex (photo 404)

## **5. Overall Conclusions and Recommendations**

Though the majority of the structures which make up the Glenside farmstead date from the late 19<sup>th</sup> to 20<sup>th</sup> centuries, the building recording and watching brief exercises uncovered evidence for the survival of building fabric that pre-dates the improvement farmstead. Structures depicted on Roy's Military Survey of 1752-55 survived, though altered, within Buildings 2 and 8, and though Building 2 has since been demolished, Building 8 remains and will be incorporated into the development scheme. An archaeological evaluation was also conducted in the north, eastern fields surrounding the farm prior to construction works taking place, uncovering evidence of earlier cultivation in the form of plough marks, furrows, and drainage (*see Addyman Archaeology Evaluation DSR- forthcoming*).

## **6. Archiving**

Both a hard copy and a digital copy of this report in its final form will be submitted to the NRHE as held by HES. This will be accompanied by the project archive including selected email correspondence, site records, and digital copies of all site photographs.

A copy of this report will also be submitted to the West of Scotland Archaeology Service (WoSAS) for inclusion on their Historic Environment Record.

An entry has been created on the online OASIS platform to ensure public access to the research and an entry will be submitted to *Discovery and Excavation in Scotland*, the annual journal produced by Archaeology Scotland charting fieldwork across Scotland.

## Appendix A Written Scheme of Investigation

### 2244 Dumfries House – Glenside farm

#### Written Scheme of Investigation (WSI) for watching brief during groundbreaking works; Historic Building Recording and Evaluation

Addyman Archaeology – November 2016

#### 1. Introduction

##### i. General

Addyman Archaeology have been contracted by The Great Steward of Scotland's Dumfries House Trust to undertake an archaeological programme of works associated with the refurbishment of the farmhouse, the conversion of existing outbuildings and the removal of redundant outbuildings at Glenside Farm, Barony Road, Auchinleck, which is within the boundaries of Dumfries House Estate. The works form part of a planning application (ref: 16/0601/PP), submitted in July 2016. The project intends to create a new multi-purpose traditional skills, arts and crafts training facility, incorporating residential accommodation. The works will also include landscaping, the formation of a new access road and installation of a new sewage treatment plant and SUDS features.

West of Scotland Archaeology Service (WoSAS), who act as archaeological advisors to East Ayrshire Council, have recommended that a suitable programme of archaeological works is undertaken in relation to the development because the origins of the settlement date back to the 18<sup>th</sup> century as depicted on Roy's map.

The aim of the archaeological works is to ensure ensure that an adequate record of any surviving buildings is undertaken prior to their demolition and a record is made to safeguard against damage to any known or unknown archaeological features in the vicinity, particularly in relation to earlier settlement in the area. The recommendations require that three stages of work should take place:

- Basic Historic Building Recording of all structures to be demolished
- Watching Brief on ground disturbance during the development, including grubbing-out of foundations of demolished structures, the removal of existing surfaces and any general reduction in ground level associated with new buildings, including parking areas, access tracks etc
- Areas of previously undeveloped agricultural land would be subject to either a programme of evaluation trenching, conducted in advance of the main development phase, or monitoring during the initial removal of turf and topsoil from the development area.

The archaeological condition states:

*'No development shall take place within the development site as outlined in red on the approved plan until the developer has secured the implementation of a programme of archaeological works in accordance with a written scheme of investigation which has been submitted by the applicant, agreed by the West of Scotland Archaeology Service, and approved by the Planning Authority. Thereafter the developer shall ensure that the programme of archaeological works is fully implemented and that all recording and recovery of archaeological resources within the development site is undertaken to the satisfaction of the Planning Authority in agreement with the West of Scotland Archaeology Service'.*

The following Written Scheme of Investigation sets out the methodology for all elements of the archaeological works involved with this proposal and in response to the archaeological condition as requested by WoSAS (see *Appendix 1*).

This report contains historic maps reproduced by permission of the Trustees of the National Library of Scotland (NLS). To view these maps online, see [www.nls.uk](http://www.nls.uk).

ii. *Site – Location, Topography and Geology*

The proposed development area is located within the boundary of Dumfries House Estate, Auchinleck, East Ayrshire, to the north of the area Designated as a Designed Garden & Landscape (NGR: NS 54030 21449). The site is situated on the west side of the village to the south of the B7036 and to the west of the A76. The site is located to the north of the woodland associated with The Temple, at the edge of the Designed Landscape and comprises agricultural buildings surrounded by farmland. The underlying geology belongs to the Scottish Coal Measures group, comprising mudstones, sandstones, siltstones and coal with the overlying drift geology comprising Diamicton Glacial Till.

2. *Historical summary and archaeological potential*

i. *Map regression*

The earliest depiction of Glenside farm is shown on Roy's 'Military Survey of Scotland' from c1750 (*figure 1*, below). This depicts a settlement named *Glenside* immediately to the north of the boundary of Dumfries House Estate, shown as a red boundary line. The land north of The Temple boundary was in the ownership of the Boswell family of Auchinleck Estate until the mid-19<sup>th</sup> century; the farm now lies within the current boundaries of the modern estate (Dovecot Architecture & Design Ltd 2016). The name *Pennylands*, shown within the Estate Boundary is the name given to the later WWII camp within the estate.



Figure 1: Extract from Roy's Military Survey of Scotland 1747 – 55, showing Glenside Farm

The first edition Ordnance Survey map of 1857 (*figure 2*, below) depicts the existing traditional buildings on the site and comprise a farmhouse with adjoining bothy and byre and a small range of stone sheds, partially enclosing a small courtyard.



*Figure 2: Extract from Ordnance Survey 1860 Ayrshire Sheet XXXV, 6 inches to 1 mile, surveyed 1857*

As stated in the Design Statement submitted with the application, the range of buildings to the north has been significantly altered, with little of the original fabric remaining as built. Newer brick sheds have been added to the east and west of the central yard with more modern steel portal frame sheds constructed to the north (Dovecot Architecture & Design Ltd 2016).

*ii. Archaeological potential*

In summary of the WoSAS response, it is suggested that the buildings depicted on the Roy map are more numerous than those depicted on the first edition Ordnance Survey map, around a century later. Although the Roy map is not detailed enough to show the precise number of buildings on the site in the 18<sup>th</sup> century, it does show more buildings, which also appear to be more dispersed than the courtyard arrangement as shown on the Ordnance Survey map. The courtyard style arrangement is typical of the 18<sup>th</sup> and 19<sup>th</sup> century 'Improvement' period farms, suggesting that the present buildings have replaced an earlier pre-improvement agricultural settlement.

Removal of the modern structures, along with any other ground breaking works within the current farmstead or within adjacent fields, therefore has the potential to reveal some of the earlier buildings associated with the pre-improvement settlement of Glenside.



### 3. *Scope of Proposed Works*

#### i. *Historic Building Recording*

The extant structures that are due to be demolished as part of the present works will be subject to a programme of Basic Historic Building Recording prior to their demolition. This will include a photographic record of the exterior of the buildings, including of the buildings within their setting and interior recording where possible. This will be presented in a report, which will contain architects plans and elevations of the buildings and a summary of the history of the building, with reference to any accessible historic maps and documentation (eg National Library of Scotland, Canmore).

#### ii. *Watching brief during groundbreaking works*

The watching brief will involve the monitoring of all groundbreaking works by a suitably qualified archaeologist. This will include the grubbing up of foundations associated with the demolished buildings; the removal of concrete floors; and all groundbreaking works associated with the construction of the new development including access roads, parking areas etc

The groundbreaking works will be undertaken by the contractor, who will also be responsible for soil removal. Soil will be stripped using a mechanical excavator fitted with a toothless or bladed bucket, where possible. This mechanical excavation work will be monitored by a qualified archaeologist under watching brief conditions until the depth of the natural subsoil is reached.

If archaeologically significant remains are identified during the watching brief, time will be allowed for them to be recorded and investigated/sampled as per recording standards which comply with those outlined by the *Chartered Institute for Archaeologists (CIfA)*.

#### iii. *Evaluation/monitoring of previously undeveloped agricultural land*

Areas of previously undeveloped agricultural land would be subject to either a programme of evaluation trenching, conducted in advance of the main development phase, or monitoring during the initial removal of turf and topsoil from the development area. The evaluation would comprise of trial trenches comprising 8% of the proposed development area, with precise locations to be agreed with WoSAS in advance of the works. A timetable for these works has not yet been formally agreed; further information regarding the works to be undertaken in this area will be confirmed in due course.

### 4. *Standards and recording*

#### i. *General*

Addyman Archaeology is committed to providing a high standard of research work, for historic building recording and assessment and for any below-ground archaeological investigations. We use standard *pro-forma* sheets for the recording of archaeological contexts, finds and samples and for drawings and photographs produced during the archaeological works, which become part of the archaeological record. These records are produced to *CIfA* standards and Addyman Archaeology adheres to the *CIfA*'s principal codes of conduct. The *pro-forma* sheets are completed manually on site and generally digitised in the office in excel database or word format as required.

Standard recording drawings are undertaken at 1:20 scale (in plan) with details and sections drawn at 1:10. Plans and sections of areas that yielded archaeological remains will be produced representing and preserving the encountered stratigraphy. A general site plan indicating the position of archaeological features will be prepared at a larger scale.

Depending on the extent and nature of the archaeological remains, these drawings are inked in and/or digitised for preservation of the site record and the Data Structure Report, presenting the findings in a standard format. In discussion with WoSAS these drawings can be reproduced at the original recorded scale or scaled down as required. All drawings are complemented by digital photography. The digital record (provided on CD) is generally complemented by a print-out of thumbnail-format images and a list with the photograph descriptions.

ii. *Reporting, archiving and artefact / ecofact analysis*

The results of the Historic Building Recording, Watching Brief and Evaluation/Monitoring will be presented in a formal Data Structure Report (DSR) to be submitted to WoSAS, typically 6-8 weeks after completion of the site works in order to discharge the archaeological planning conditions.

If archaeological finds are recovered during the watching brief or evaluation/monitoring, they will be formally recorded, cleaned/conserved where necessary, and studied appropriately. A small provision is allowed for such work as part of this phase of works. The qualified archaeologist on site will assess the extent and quality of the archaeological remains. Any finds recovered from the site works will be submitted to *Treasure Trove* within 6 months of the completion of the project.

All material, drawings, reports, site records and photographs will be catalogued and deposited with the *National Record of the Historic Environment* (NRHE) held at *Historic Environment Scotland* (HES) within 6 months of the completion of the project. A short description of the works will also be submitted for the annual edition of *Discovery & Excavation Scotland* (DES), published by *Archaeology Scotland* and also to the Online Access to the Index of Archaeological Evaluations (OASIS) as part of the archaeological watching brief.

The Data Structure Report for this phase will detail the methodology to be employed during any further excavation stage.

5. *Post-excavation and publication*

i. *General*

The archaeological planning condition requires the provision for archaeological excavation, recording and analysis of any previously unknown features identified during this phase of archaeological works (Historic Building Recording, Watching Brief, Evaluation/Monitoring). If any sites of potential archaeological or cultural heritage significance are identified during this phase of works, there may be a requirement for further works. This may include excavation, analysis and publication, and would be dependent upon the discoveries and WoSAS' requirements. If significant artefacts and/or ecofacts are recovered during any phase of works, which will require detailed specialist study, a Post-Excavation Research Design (PERD) will have to be agreed with WoSAS.

ii. *Excavation*

Further excavation following the evaluation/monitoring phase of works would be dependent upon the nature of the archaeological sites/features identified and would be subject to recommendations by WoSAS. This would involve the excavation, recording and study of archaeological sites by suitably qualified archaeologists, conforming to an accepted methodology to be agreed at the time of the discovery of significant archaeological remains. If significant artefacts and/or ecofacts are recovered, a Post-Excavation Research Design (PERD) will have to be agreed with WoSAS. This document will detail the proposed methodology for the study of artefacts and environmental remains by specialists. If significant archaeological remains are found, the post-excavation requirements may be substantial.

If the findings during excavation and / or post-excavation analysis provide a significant contribution to archaeology as a subject, it may become a condition to disseminate the results through full academic publication.

Any further excavation, Post-excavation works or work associated with publication will form an additional phase of work and will be costed separately.

## **6. *Schedule and Resourcing***

### *i. Timetable*

The Historic Building Recording will take place from 30<sup>th</sup> November – 2<sup>nd</sup> December 2016, with the buildings scheduled for demolition on the week beginning the 5<sup>th</sup> December. An initial watching brief on the removal of the concrete floors of the buildings will take place during this time. WoSAS will be informed of an extension to the duration of the watching brief and any subsequent attendance.

The schedule of the monitoring/evaluation of the agricultural areas is still to be discussed. WoSAS will be given at least 1 weeks' notice prior to the commencement of works in this area.

### *ii. Project Staff*

The Historic Building Survey and archaeological watching brief will be undertaken by Andrew Morrison. Further works will be undertaken by one of Addyman Archaeology's experienced Archaeologists.

### *iii. Health & Safety*

Addyman Archaeology staff will be supplied with standard PPE and will follow all Health & Safety procedures as advised by the Main Contractor. A Risk Assessment/Method Statement for the archaeological works can be provided on request.

## **7. *References***

Dovecot Architecture & Design Ltd 2016 *Proposed Centre for Applied Arts: Design Statement for Dumfries House Estate*

Roy, W 1747 – 55 *Military Survey of Scotland*

Ordnance Survey 1860 Ayrshire Sheet XXXV, 6 inches to 1 mile, surveyed 1857

## Appendix B Context Register

Context No.	Type	Description	Dimension	Comments	Date	Initial
900	Structural	Structure 9		Enclosure	02/12/2016	AJLM
901	Structural	Drystone-built courtyard retaining wall. Sandstone and ?whin/ granite, incorporates re-used sandstone. Some later concrete patching. Curves northwards at NE end, likely also continued to SW. Abutted by brick wall [902] to SW and concrete surface (910) to NW and cobbles (907) to SE. underlies concrete pad (903) and concrete wall [909]	c.6.0m length NE/SW, 0.5-0.6m width, c.0.50m visible height	Likely mid-19th c. improvement farmstead related	02/12/2016	AJLM
902	Structural	Southern brick-built wall of enclosure abutting [901] to southwest. Concrete mortared. Orientated NE/SW. Abutted by concrete surface (910) to northwest.	0.38m width, 1.65m height	Forms part of south, west, and north walls of enclosure	02/12/2016	AJLM
903	Deposit	Poured concrete slabs to the west of Building 8. Abuts concrete wall [909] to the east, abutted by gravel layer (904) to south. Overlies cobbled surface (907) and drystone wall [901]. Continues to the north.	c0.15m thick	20th century surface	02/12/2016	AJLM
904	Deposit	Brick/ rubble/ gravel layer abutting concrete (903) to south. Overlies cobbles (907). Same as stone/gravel/brick surface (905) and same phase as mortar dump (906).	<0.10m thick	Later courtyard surface with multiple repairs	02/12/2016	AJLM
905	Deposit	Stone/ Brick/ Gravel surface overlying cobbles (907), same as (904) to north. Contains flat stone (likely reuse) as well as brick and concrete frags. Also contains mortar dump (906). Likely continues to S, SW, and N.	0.13m thick	Later courtyard surface with multiple repairs	02/12/2016	AJLM
906	Deposit	Mortar spread/ dump associated with courtyard surfaces (904/905). Yellow/white mortar with rounded gravel and sandstone frag inclusions. Abuts (905) to north, overlies (907).	0.80m E/W, 0.60m N/S, 0.05m thick	Likely a dump, not thought to be structural remnant	02/12/2016	AJLM
907	Deposit	Cobble courtyard surface abutting [901] to east. Underlies surfaces (904)(905) and spread (906). Likely continues to N and S.		Likely improvement farmstead courtyard surface	02/12/2016	AJLM
908	Deposit	Cobbles? Southwest end of [901], Same as (907)? Within compact silty gravel matrix. SW end of drystone wall (901) to S. Disturbed.	0.70m SW/NE, 0.30m N/S	Area of probable disturbed cobbles	02/12/2016	AJLM
909	Structural	Poured concrete wall overlying [901]. Brick-blocked entrance within east elevation. Orientated N/S and NE/SW. Abuts brick wall (902), abutted by concrete pad (903).	1.30m height, 0.30m width	Concrete wall	02/12/2016	AJLM
910	Deposit	Concrete surface within Structure 9. Abuts (901)(902) to NW, Continues N.		Concrete surface	02/12/2016	AJLM

## Appendix C Photographic Register

Image No.	Frame	Direction Facing	Date	Description	Taken By
001	4209	E	30/11/2016	Building 2, N elevation, E end, General	AJLM
002	4210	NE	30/11/2016	General site, Towards huts	AJLM
003	4212	NW	30/11/2016	General site, Across Structure 1	AJLM
004	4213	W	30/11/2016	General site, Across Structure 1 to Building 7	AJLM
005	4214	SW	30/11/2016	General site, Across Building 2 to Building 7	AJLM
006	4215	SSW	30/11/2016	Building 2, Partial N facing S elevation, W end	AJLM
007	4216	S	30/11/2016	Building 2, Central gable	AJLM
008	4217	W	30/11/2016	Across Structure 1 to Building 7	AJLM
009	4218	N	30/11/2016	Structure 1, Line of central steel structure	AJLM
010	4219	W	30/11/2016	Across Structure 1 to Building 7	AJLM
011	4221	NNW	30/11/2016	Structure 1, Slab	AJLM
012	4222	N	30/11/2016	Structure 1, Slab	AJLM
013	4223	N	30/11/2016	Structure 1, Slab, W end	AJLM
014	4225	NE	30/11/2016	Structure 1, Slab, Lip to E end	AJLM
015	4227	SE	30/11/2016	Structure 1, Slab removal	AJLM
016	4228	-	30/11/2016	Structure 1, Slab bedding brick example, 'BANK'	AJLM
017	4230	NW	30/11/2016	Structure 1, Steel structure foundation with concrete	AJLM
018	4231	N	30/11/2016	Structure 1, Foundation removal	AJLM
019	4232	N	30/11/2016	Structure 1, Foundation removal, Showing clay	AJLM
020	4233	-	30/11/2016	Structure 1, Slab bedding brick example, 'BUCCLEUCH TERRA-COTTA Co.'	AJLM
021	4234	SW	30/11/2016	Building 2, Exterior, NE corner	AJLM
022	4235	SW	30/11/2016	Building 2, Exterior, NE corner	AJLM
023	4236	SE	30/11/2016	Building 2, Exterior, NE corner, Wall head	AJLM
024	4237	SE	30/11/2016	Building 2, Exterior, NE corner, Wall head	AJLM
025	4238	W	30/11/2016	Building 2, Exterior, NE corner, Wall head	AJLM
026	4239	S	30/11/2016	Building 2, Exterior, E elevation	AJLM
027	4240	N	30/11/2016	Building 2, Exterior, E elevation	AJLM
028	4241	N	30/11/2016	Building 2, Exterior, S elevation, E end ->	AJLM
029	4242	N	30/11/2016	Building 2, Exterior, S elevation, ->	AJLM
030	4243	N	30/11/2016	Building 2, Exterior, S elevation, ->	AJLM
031	4244	N	30/11/2016	Building 2, Exterior, S elevation, ->	AJLM
032	4245	N	30/11/2016	Building 2, Exterior, S elevation, ->	AJLM
033	4246	N	30/11/2016	Building 2, Exterior, S elevation, ->	AJLM
034	4247	N	30/11/2016	Building 2, Exterior, S elevation, Central ->	AJLM
035	4248	N	30/11/2016	Building 2, Exterior, S elevation, ->	AJLM
036	4249	NW	30/11/2016	Building 2, Exterior, S elevation, ->	AJLM
037	4250	NE	30/11/2016	Building 2, Exterior, S elevation, ->	AJLM
038	4251	N	30/11/2016	Building 2, Exterior, S elevation, ->	AJLM
039	4252	N	30/11/2016	Building 2, Exterior, S elevation, ->	AJLM
040	4253	N	30/11/2016	Building 2, Exterior, S elevation, ->	AJLM
041	4254	N	30/11/2016	Building 2, Exterior, S elevation, ->	AJLM
042	4255	N	30/11/2016	Building 2, Exterior, S elevation, ->	AJLM
043	4256	N	30/11/2016	Building 2, Exterior, S elevation, W end	AJLM
044	4257	N	30/11/2016	Building 2, Exterior, S elevation, E end, Blocked opening detail	AJLM
045	4258	N	30/11/2016	Building 2, Exterior, S elevation, Room A doorway foundation detail	AJLM
046	4259	NW	30/11/2016	Building 2, Exterior, S elevation, Room A doorway	AJLM
047	4261	W	30/11/2016	Building 2, Interior, Room A, E facing	AJLM
048	4262	W	30/11/2016	Building 2, Interior, Room A, E facing	AJLM
049	4263	N	30/11/2016	Building 2, Interior, Room A, S facing, W end	AJLM
050	4264	N	30/11/2016	Building 2, Interior, Room A, S facing, E end	AJLM
051	4265	NE	30/11/2016	Building 2, Interior, Room A, NE corner	AJLM
052	4266	E	30/11/2016	Building 2, Interior, Room A, W facing, N end	AJLM
053	4267	E	30/11/2016	Building 2, Interior, Room A, W facing, S end	AJLM
054	4268	S	30/11/2016	Building 2, Interior, Room A, Trough	AJLM
055	4269	S	30/11/2016	Building 2, Interior, Room A, N facing, E end	AJLM
056	4270	S	30/11/2016	Building 2, Interior, Room A, N facing, W end	AJLM
057	4271	S	30/11/2016	Building 2, Interior, Room A, N facing, Window detail	AJLM
058	4272	SE	30/11/2016	Building 2, Interior, Room A, SE corner	AJLM

<i>Image No.</i>	<i>Frame</i>	<i>Direction Facing</i>	<i>Date</i>	<i>Description</i>	<i>Taken By</i>
059	4273	NW	30/11/2016	Building 2, Exterior, S elevation, Foundation detail	AJLM
060	4274	NW	30/11/2016	Building 2, Exterior, Room B, Doorway	AJLM
061	4275	S	30/11/2016	Building 2, Interior, Room B, N facing, Doorway	AJLM
062	4276	S	30/11/2016	Building 2, Interior, Room B, N facing, W end	AJLM
063	4277	W	30/11/2016	Building 2, Interior, Room B, E facing gable, overall	AJLM
064	4278	W	30/11/2016	Building 2, Interior, Room B, E facing gable, S end, Lower	AJLM
065	4279	W	30/11/2016	Building 2, Interior, Room B, E facing gable, S end, Mid	AJLM
066	4280	W	30/11/2016	Building 2, Interior, Room B, E facing gable, S end, Upper	AJLM
067	4281	W	30/11/2016	Building 2, Interior, Room B, E facing gable, Mid, Lower	AJLM
068	4282	W	30/11/2016	Building 2, Interior, Room B, E facing gable, Mid, Mid	AJLM
069	4283	W	30/11/2016	Building 2, Interior, Room B, E facing gable, Mid, Upper	AJLM
070	4284	W	30/11/2016	Building 2, Interior, Room B, E facing gable, N end, Lower	AJLM
071	4285	W	30/11/2016	Building 2, Interior, Room B, E facing gable, N end, Mid	AJLM
072	4286	W	30/11/2016	Building 2, Interior, Room B, E facing gable, N end, Upper	AJLM
073	4287	N	30/11/2016	Building 2, Interior, Room B, S facing, W end ->	AJLM
074	4288	N	30/11/2016	Building 2, Interior, Room B, S facing ->	AJLM
075	4289	N	30/11/2016	Building 2, Interior, Room B, S facing, E end	AJLM
076	4290	N	30/11/2016	Building 2, Interior, Room B, S facing, W window, Detail	AJLM
077	4291	NW	30/11/2016	Building 2, Interior, Room B, S facing, W window, Stone	AJLM
078	4292	-	30/11/2016	Building 2, Interior, Room B, S facing, W window, Lath	AJLM
079	4293	N	30/11/2016	Building 2, Exterior, SW corner	AJLM
080	4294	E	30/11/2016	Building 2, Exterior, W elevation	AJLM
081	4295	E	30/11/2016	Building 2, Exterior, W elevation	AJLM
082	4296	V/E	30/11/2016	Building 2, Exterior, W elevation, Slurry hatch	AJLM
083	4297	S	30/11/2016	Building 2, Exterior, S elevation, N facing	AJLM
084	4298	S	30/11/2016	Building 2, Exterior, N elevation, W end ->	AJLM
085	4299	S	30/11/2016	Building 2, Exterior, N elevation, ->	AJLM
086	4300	S	30/11/2016	Building 2, Exterior, N elevation, ->	AJLM
087	4301	S	30/11/2016	Building 2, Exterior, N elevation, E end	AJLM
088	4302	S	30/11/2016	Building 2, Exterior, S elevation, N facing, W end ->	AJLM
089	4303	S	30/11/2016	Building 2, Exterior, S elevation, N facing, ->	AJLM
090	4304	S	30/11/2016	Building 2, Exterior, S elevation, N facing, ->	AJLM
091	4305	S	30/11/2016	Building 2, Exterior, S elevation, N facing, ->	AJLM
092	4306	S	30/11/2016	Building 2, Exterior, S elevation, N facing, Slurry ->	AJLM
093	4307	S	30/11/2016	Building 2, Exterior, S elevation, N facing, ->	AJLM
094	4308	S	30/11/2016	Building 2, Exterior, S elevation, N facing, Slurry ->	AJLM
095	4309	S	30/11/2016	Building 2, Exterior, S elevation, N facing, ->	AJLM
096	4310	S	30/11/2016	Building 2, Exterior, S elevation, N facing, Slurry ->	AJLM
097	4311	S	30/11/2016	Building 2, Exterior, S elevation, N facing, E end	AJLM
098	4312	S	30/11/2016	Building 2, Exterior, S elevation, N facing, E end, Slurry	AJLM
099	4313	SE	30/11/2016	Building 2, Exterior, W facing gable	AJLM
100	4314	SE	30/11/2016	Building 2, Exterior, W facing gable	AJLM
101	4315	SE	30/11/2016	Building 2, Exterior, W facing gable	AJLM
102	4316	S	30/11/2016	Building 2, Exterior, N elevation, At gable end ->	AJLM
103	4317	S	30/11/2016	Building 2, Exterior, N elevation, At gable end ->	AJLM
104	4318	S	30/11/2016	Building 2, Exterior, N elevation, At gable end ->	AJLM
105	4319	S	30/11/2016	Building 2, Exterior, N elevation, At gable end, E end	AJLM
106	4320	SW	30/11/2016	Building 2, Exterior, N elevation, Overall	AJLM
107	4321	SSW	30/11/2016	Building 2, Exterior, N elevation, Overall	AJLM
108	4322	S	30/11/2016	Building 3, NE Corner, Setting	AJLM
109	4323	SE	30/11/2016	Building 3, Exterior, NW corner	AJLM
110	4324	SE	30/11/2016	Building 3, Exterior, NW corner	AJLM
111	4325	S	30/11/2016	Building 3, Exterior, N gable, Overall	AJLM
112	4329	-	30/11/2016	Building 3, Exterior, N gable, Feed trough	AJLM
113	4330	W	30/11/2016	Building 3, Exterior, E elevation, N end ->	AJLM
114	4331	W	30/11/2016	Building 3, Exterior, E elevation, N end ->	AJLM
115	4332	W	30/11/2016	Building 3, Exterior, E elevation, ->	AJLM
116	4333	W	30/11/2016	Building 3, Exterior, E elevation, ->	AJLM
117	4334	W	30/11/2016	Building 3, Exterior, E elevation, S end	AJLM

<i>Image No.</i>	<i>Frame</i>	<i>Direction Facing</i>	<i>Date</i>	<i>Description</i>	<i>Taken By</i>
118	4335	NW	30/11/2016	Building 3, Exterior, SE corner	AJLM
119	4336	N	30/11/2016	Building 3, Exterior, S elevation	AJLM
120	4337	E	30/11/2016	Building 3, Exterior, W elevation, S end	AJLM
121	4338	NE	30/11/2016	Building 3, Exterior, W elevation, N end	AJLM
122	4339	-	30/11/2016	Building 3, Exterior, Scrap- Pony cart?	AJLM
123	4340	-	30/11/2016	Building 3, Exterior, Scrap- Fe jug	AJLM
124	4341	S	30/11/2016	Building 3, Interior, N facing, Overall	AJLM
125	4342	SW	30/11/2016	Building 3, Interior, SW corner	AJLM
126	4343	SE	30/11/2016	Building 3, Interior, SE corner	AJLM
127	4344	NW	30/11/2016	Building 3, Interior, NW corner	AJLM
128	4345	N	30/11/2016	Building 3, Interior, N gable	AJLM
129	4346	NE	30/11/2016	Building 3, Interior, NE corner	AJLM
130	4347	SE	30/11/2016	Building 3, Interior, SE corner	AJLM
131	4348	E	30/11/2016	Building 3, Interior, W facing, N end	AJLM
132	4349	N	30/11/2016	Structure 1, Mid pad removal	AJLM
133	4350	NE	30/11/2016	Building 7, SW corner	AJLM
134	4351	NE	30/11/2016	Across Building 7 towards Building 2 with Structure 4, Building 8 visible	AJLM
135	4352	E	30/11/2016	Towards Structures 4,5, Building 8	AJLM
136	4353	E	30/11/2016	Building 2, Exterior, W facing gable, Overall	AJLM
137	4354	E	30/11/2016	Building 2, Exterior, W facing gable, Detail	AJLM
138	4355	SE	30/11/2016	Across Structure 1 towards Buildings 2,8, Structure 4	AJLM
139	4356	SE	30/11/2016	Across Structure 1 towards Buildings 2,8, Structure 4	AJLM
140	4357	S	30/11/2016	Structure 1, Slab removed, W end	AJLM
141	4360	NE	01/12/2016	Building 2, SW corner	AJLM
142	4361	-	01/12/2016	Building 3, Post-demolition, Brick type 'DICO'	AJLM
143	4362	NW	01/12/2016	Building 3, Post-demolition, Overall	AJLM
144	4363	WNW	01/12/2016	Building 3, Post-demolition, Across to Building 2	AJLM
145	4364	W	01/12/2016	Building 2, E elevation, N end ->	AJLM
146	4365	W	01/12/2016	Building 2, E elevation, S end	AJLM
147	4367	NE	01/12/2016	Building 3, Post-demolition, Underlying clay	AJLM
148	4368	NW	01/12/2016	Building 2, Demolition of SE corner	AJLM
149	4369	NW	01/12/2016	Building 2, Demolition of SE corner	AJLM
150	4370	W	01/12/2016	Building 2, Demolition, E elevation removed	AJLM
151	4371	N	01/12/2016	Building 2, Demolition, Room A removed	AJLM
152	4372	NW	01/12/2016	Building 2, Demolition, Progress	AJLM
153	4373	NW	01/12/2016	Building 2, Demolition, Remaining range	AJLM
154	4374	W	01/12/2016	Building 2, Towards farmhouse	AJLM
155	4375	N	01/12/2016	Building 2, Demolition, Brick internal wall remnant	AJLM
156	4376	N	01/12/2016	Building 2, Demolition, In progress	AJLM
157	4377	N	01/12/2016	Building 2, Demolition, In progress	AJLM
158	4380	SW	01/12/2016	Building 8, Post Building 2 demolition	AJLM
159	4381	SW	01/12/2016	Building 8, Post Building 2 demolition	AJLM
160	4382	SW	01/12/2016	Clay underlying Building 2 foundation, E elevation	AJLM
161	4383	N	01/12/2016	Stratigraphy abutting Building 2 retaining wall	AJLM
162	4384	N	01/12/2016	Stratigraphy abutting Building 2 retaining wall	AJLM
163	4385	NW	01/12/2016	Stratigraphy abutting Building 2 retaining wall	AJLM
164	4386	NW	01/12/2016	Building 2, Demolition, Bricked-in door frame	AJLM
165	4388	E	01/12/2016	Building 2, Demolition, Ashy-cinder under Room A brick floor	AJLM
166	4389	ESE	01/12/2016	Building 2, Demolition, Ashy-cinder under Room A brick floor	AJLM
167	4390	S	01/12/2016	Building 8, Farmhouse	AJLM
168	4391	SW	01/12/2016	Building 8, Farmhouse	AJLM
169	4392	W	01/12/2016	Building 2, Demolition in progress	AJLM
170	4393	NW	01/12/2016	Building 2, Demolition in progress	AJLM
171	4394	W	01/12/2016	Building 2, Demolition, Room A ashy, Room B clay	AJLM
172	4396	W	01/12/2016	Building 2, Demolition, In progress	AJLM
173	4398	SW	02/12/2016	Structure 9, Interior, SW corner	AJLM
174	4399	W	02/12/2016	Structure 9, Interior, NW corner	AJLM
175	4400	S	02/12/2016	Structure 9, Interior, S elevation	AJLM
176	4401	SE	02/12/2016	Structure 9, Interior, SE corner	AJLM
177	4402	E	02/12/2016	Structure 9, Interior, E elevation, N end ->	AJLM

<i>Image No.</i>	<i>Frame</i>	<i>Direction Facing</i>	<i>Date</i>	<i>Description</i>	<i>Taken By</i>
178	4403	E	02/12/2016	Structure 9, Interior, E elevation, ->	AJLM
179	4404	E	02/12/2016	Structure 9, Interior, E elevation, S end	AJLM
180	4405	SE	02/12/2016	Structure 9, Interior, S elevation, E end ->	AJLM
181	4406	SE	02/12/2016	Structure 9, Interior, S elevation, ->	AJLM
182	4407	SE	02/12/2016	Structure 9, Interior, S elevation, ->	AJLM
183	4408	SE	02/12/2016	Structure 9, Interior, S elevation, W end	AJLM
184	4409	W	02/12/2016	Structure 9, Interior, W elevation, S end ->	AJLM
185	4410	W	02/12/2016	Structure 9, Interior, W elevation, ->	AJLM
186	4411	W	02/12/2016	Structure 9, Interior, W elevation, ->	AJLM
187	4412	W	02/12/2016	Structure 9, Interior, W elevation, ->	AJLM
188	4413	W	02/12/2016	Structure 9, Interior, W elevation, ->	AJLM
189	4414	W	02/12/2016	Structure 9, Interior, W elevation, N end	AJLM
190	4415	N	02/12/2016	Structure 9, Interior, N elevation, W end	AJLM
191	4416	N	02/12/2016	Structure 9, Interior, N elevation, At entrance	AJLM
192	4417	E	02/12/2016	Structure 9, Exterior, E elevation, N end ->	AJLM
193	4418	E	02/12/2016	Structure 9, Exterior, E elevation, ->	AJLM
194	4419	E	02/12/2016	Structure 9, Exterior, E elevation, ->	AJLM
195	4420	E	02/12/2016	Structure 9, Exterior, E elevation, ->	AJLM
196	4421	E	02/12/2016	Structure 9, Exterior, E elevation, S end	AJLM
197	4422	NW	02/12/2016	Structure 9, Exterior, S elevation, E end ->	AJLM
198	4423	NW	02/12/2016	Structure 9, Exterior, S elevation, ->	AJLM
199	4424	NW	02/12/2016	Structure 9, Exterior, S elevation, ->	AJLM
200	4425	NW	02/12/2016	Structure 9, Exterior, S elevation, ->	AJLM
201	4426	NW	02/12/2016	Structure 9, Exterior, S elevation, ->	AJLM
202	4427	NW	02/12/2016	Structure 9, Exterior, S elevation, ->	AJLM
203	4428	NW	02/12/2016	Structure 9, Exterior, S elevation, W end	AJLM
204	4429	E	02/12/2016	Structure 9, Exterior, W elevation, S end ->	AJLM
205	4430	E	02/12/2016	Structure 9, Exterior, W elevation, ->	AJLM
206	4431	E	02/12/2016	Structure 9, Exterior, W elevation, ->	AJLM
207	4432	E	02/12/2016	Structure 9, Exterior, W elevation, ->	AJLM
208	4433	E	02/12/2016	Structure 9, Exterior, W elevation, ->	AJLM
209	4434	E	02/12/2016	Structure 9, Exterior, W elevation, ->	AJLM
210	4435	E	02/12/2016	Structure 9, Exterior, W elevation, ->	AJLM
211	4436	E	02/12/2016	Structure 9, Exterior, W elevation, N end	AJLM
212	4437	S	02/12/2016	Structure 9, Exterior, N elevation, W end	AJLM
213	4438	S	02/12/2016	Structure 9, Exterior, N elevation, At entrance	AJLM
214	4439	SE	02/12/2016	Structure 9, Interior, S elevation, Stone wall	AJLM
215	4440	SE	02/12/2016	Structure 9, Interior, S elevation, Stone wall, Detail, At brick ->	AJLM
216	4441	SE	02/12/2016	Structure 9, Interior, S elevation, Stone wall, Detail, ->	AJLM
217	4442	SE	02/12/2016	Structure 9, Interior, S elevation, Stone wall, Detail, ->	AJLM
218	4443	SE	02/12/2016	Structure 9, Interior, S elevation, Stone wall, Detail, ->	AJLM
219	4444	SE	02/12/2016	Structure 9, Interior, S elevation, Stone wall, Detail, At SE corner	AJLM
220	4445	SE	02/12/2016	Structure 9, Interior, S elevation, Stone wall, Detail, At brick ->	AJLM
221	4446	SE	02/12/2016	Structure 9, Interior, S elevation, Stone wall, Detail, ->	AJLM
222	4447	SE	02/12/2016	Structure 9, Interior, S elevation, Stone wall, Detail, ->	AJLM
223	4448	SE	02/12/2016	Structure 9, Interior, S elevation, Stone wall, Detail, ->	AJLM
224	4449	E	02/12/2016	Structure 9, Interior, S elevation, Stone wall, Detail, Towards SE corner	AJLM
225	4450	SW	02/12/2016	Structure 9, Exterior, S elevation, Stone wall, Detail, Along wall line	AJLM
226	4451	SW	02/12/2016	Structure 9, Exterior, S elevation, Along wall line	AJLM
227	4452	S	02/12/2016	Structure 9, Area shot towards field	AJLM
228	4453	W	02/12/2016	Structure 9, Across structure from SE corner	AJLM
229	4454	N	02/12/2016	Structure 5, Interior, SW corner of Building 8	AJLM
230	4455	NE	02/12/2016	Structure 5, Interior, Towards NE corner	AJLM
231	4456	NE	02/12/2016	Structure 5, Interior, Towards NE corner	AJLM
232	4457	E	02/12/2016	Structure 5, Interior, NE corner	AJLM
233	4458	SE	02/12/2016	Structure 5, Interior, SE corner	AJLM
234	4459	S	02/12/2016	Structure 5, Interior, S elevation, Mid	AJLM
235	4460	SW	02/12/2016	Structure 5, Interior, Towards, SW corner	AJLM



<i>Image No.</i>	<i>Frame</i>	<i>Direction Facing</i>	<i>Date</i>	<i>Description</i>	<i>Taken By</i>
236	4461	E	02/12/2016	Structure 5, Exterior, W elevation	AJLM
237	4462	NW	02/12/2016	Structure 5, Exterior, S elevation, W end	AJLM
238	4463	N	02/12/2016	Structure 5, Exterior, S elevation, Mid	AJLM
239	4464	NE	02/12/2016	Structure 5, Exterior, S elevation, E end	AJLM
240	4465	NW	02/12/2016	Structure 5, Exterior, SE corner	AJLM
241	4466	W	02/12/2016	Structure 5, Exterior, E elevation	AJLM
242	4467	W	02/12/2016	Structure 5, Exterior, E elevation, Detail	AJLM
243	4468	W	02/12/2016	Structure 9, Wall [901] and courtyard, Overall	AJLM
244	4469	S	02/12/2016	Structure 9, Wall [901] and courtyard, Overall	AJLM
245	4470	NE	02/12/2016	Structure 9, Wall [901] and cobbles (908)	AJLM
246	4471	S	02/12/2016	Cobbles (907), Mortar dump (906), Surfaces (905)(904)	AJLM
247	4472	W	02/12/2016	Cobbles (907), Mortar dump (906), Surfaces (905)(904)	AJLM
248	4473	N	02/12/2016	Cobbles (907), Mortar dump (906), Surfaces (905)(904)	AJLM
249	4474	E	02/12/2016	Cobbles (907), Mortar dump (906), Surfaces (905)(904)	AJLM
250	4475	SW	02/12/2016	Cobbles (907), Mortar dump (906), Surfaces (905)(904)	AJLM
251	4476	SSE	02/12/2016	Cobbles (907), Mortar dump (906), Surfaces (905)(904)	AJLM
252	4477	W	02/12/2016	Cobbles (907), Mortar dump (906), Surfaces (905)(904)	AJLM
253	4478	SW	02/12/2016	Along wall [901], With cobbles (907) and surface (905)	AJLM
254	4479	V/NW	02/12/2016	Wall [901], SW end, With (908) ->	AJLM
255	4480	V/NW	02/12/2016	Wall [901], With (908) ->	AJLM
256	4481	V/NW	02/12/2016	Wall [901], ->	AJLM
257	4482	V/NW	02/12/2016	Wall [901], Towards cobbles (907) ->	AJLM
258	4483	V/NW	02/12/2016	Wall [901], NE end, With cobbles (907)	AJLM
259	4484	SW	02/12/2016	Along wall [901] towards brick wall [902]	AJLM
260	4485	SW	02/12/2016	Along wall [901] towards brick wall [902]	AJLM
261	4486	S	02/12/2016	Post-ex overall of courtyard and wall	AJLM
262	4487	S	02/12/2016	Post-ex overall of courtyard and wall, Wider shot	AJLM
263	4488	SE	02/12/2016	Walls [901][902] junction and concrete (909)	AJLM
264	4489	V/SE	02/12/2016	Wall [901], SW end ->	AJLM
265	4490	V/SE	02/12/2016	Wall [901], SW end ->	AJLM
266	4491	V/SE	02/12/2016	Wall [901] ->	AJLM
267	4492	E	02/12/2016	Wall [901], NE end	AJLM
268	4493	E	02/12/2016	Concrete slab (903) and courtyard area	AJLM
269	4494	V/SE	02/12/2016	Detail of reused stone in NW facing elevation of [901]	AJLM
270	4495	V/SE	02/12/2016	Detail of 2nd reused stone in NW facing elevation of [901]	AJLM
271	4496	NW	02/12/2016	Mid-ex of slurry pit, W end, Building 2	AJLM
272	4497	NNW	02/12/2016	Mid-ex of slurry pit, W end, Building 2	AJLM
273	4498	W	02/12/2016	Mid-ex of slurry pit, W end, Building 2	AJLM
274	4499	NW	02/12/2016	Mid-ex of slurry pit, W end, Building 2	AJLM
275	4500	W	02/12/2016	Mid-ex of slurry pit, W end, Building 2, Detail of inner concrete skin	AJLM
276	4501	NE	05/12/2016	Mid-ex of slurry pit, W end, Building 2	AJLM
277	4502	N	05/12/2016	Mid-ex of slurry pit, W end, Building 2	AJLM
278	4503	NW	05/12/2016	Mid-ex of slurry pit, W end, Building 2	AJLM
279	4504	SW	05/12/2016	Building 2, Stratigraphy, Concrete skin removed, Foundations over natural	AJLM
280	4505	S	05/12/2016	Building 2, Stratigraphy, Concrete skin removed, Foundations over natural	AJLM
281	4506	SW	05/12/2016	Building 2, Stratigraphy, Concrete skin removed, Foundations over natural	AJLM
282	4507	S	05/12/2016	Building 2, Stratigraphy, Concrete skin removed, Foundations over natural	AJLM
283	4508	S	05/12/2016	Building 2, Stratigraphy, Concrete skin removed, Foundations over natural	AJLM
284	4509	SW	05/12/2016	Building 2, Stratigraphy, Concrete skin removed, Foundations over natural	AJLM
285	4510	E	05/12/2016	Structure 4/ Building 8, W facing, N end	AJLM
286	4511	E	05/12/2016	Structure 4/ Building 8, W facing, S end	AJLM
287	4512	E	05/12/2016	Structure 4/ Building 8, W facing, Overall	AJLM
288	4513	E	05/12/2016	Structure 4/ Building 8, W facing elevation, Overall	AJLM
289	4514	NE	05/12/2016	Structure 4, Interior, NE corner	AJLM
290	4515	SE	05/12/2016	Structure 4, Interior, SE corner	AJLM

<i>Image No.</i>	<i>Frame</i>	<i>Direction Facing</i>	<i>Date</i>	<i>Description</i>	<i>Taken By</i>
291	4516	S	05/12/2016	Structure 4/ Building 8, N facing elevation, E end ->	AJLM
292	4517	S	05/12/2016	Structure 4/ Building 8, N facing elevation, ->	AJLM
293	4518	S	05/12/2016	Structure 4/ Building 8, N facing elevation, ->	AJLM
294	4519	S	05/12/2016	Structure 4/ Building 8, N facing elevation, W end	AJLM
295	4520	SE	05/12/2016	Structure 4, Interior, From NW corner	AJLM
296	4521	SE	05/12/2016	Structure 4, Interior, From NW corner	AJLM
297	4522	S	05/12/2016	Structure 4/ Building 8, SW corner detail	AJLM
298	4523	SE	05/12/2016	Structure 4, Area of brick along S elevation	AJLM
299	4524	ESE	05/12/2016	Structure 4, Area of brick along S elevation	AJLM
300	4525	S	05/12/2016	Building 8 wall stub projecting into Structure 4	AJLM
301	4526	S	05/12/2016	Building 8 wall stub projecting into Structure 4, Lower detail	AJLM
302	4527	N	05/12/2016	Structure 4, N elevation, W end ->	AJLM
303	4528	N	05/12/2016	Structure 4, N elevation, ->	AJLM
304	4529	N	05/12/2016	Structure 4, N elevation, ->	AJLM
305	4530	N	05/12/2016	Structure 4, N elevation, ->	AJLM
306	4531	N	05/12/2016	Structure 4, N elevation, ->	AJLM
307	4532	N	05/12/2016	Structure 4, N elevation, E end	AJLM
308	4533	W	05/12/2016	Structure 4, Interior, N end	AJLM
309	4534	WSW	05/12/2016	Structure 4, Interior, S end	AJLM
310	4535	SW	05/12/2016	Building 8, Farmhouse from NE	AJLM
311	4536	W	05/12/2016	Building 2, Post-demolition groundworks	AJLM
312	4537	NE	05/12/2016	Building 2, Post-demolition groundworks	AJLM
313	4538	E	05/12/2016	Structure 5, Interior, overall	AJLM
314	4539	NE	05/12/2016	Concrete surface W of Building 8	AJLM
315	4540	N	05/12/2016	Concrete surface W of Building 8 and E of Structure 9	AJLM
316	4541	NW	05/12/2016	Structure 9, Overall from SE	AJLM
317	4542	W	05/12/2016	Structure 9, Overall from SE	AJLM
318	4543	N	05/12/2016	Concrete surface between Building 8 and Structure 9	AJLM
319	4544	S	05/12/2016	Concrete surface between Building 8, Structure 4, and Structure 9	AJLM
320	4545	SW	05/12/2016	Concrete surface between Building 8 and Structure 9	AJLM
321	4546	W	05/12/2016	Concrete surface between Structure 9 and Building 7	AJLM
322	4547	W	05/12/2016	Concrete surface between Structure 9, Building 7, and Gate	AJLM
323	4548	NE	05/12/2016	Concrete surface E of Building 7	AJLM
324	4549	E	05/12/2016	Concrete surface N of Structure 4	AJLM
325	4550	NW	05/12/2016	Building 2, Slurry emptying tank, W end	AJLM
326	4551	SW	05/12/2016	Structure 5, Post concrete removal, SE corner	AJLM
327	4552	W	05/12/2016	Structure 5, Post concrete removal, Overall	AJLM
328	4553	V/W	05/12/2016	Structure 5, Post concrete removal, E end	AJLM
329	4554	V/NW	05/12/2016	Structure 5, Post concrete removal, NE corner	AJLM
330	4555	NW	05/12/2016	Structure 5, Post concrete removal, N end	AJLM
331	4556	V/NE	05/12/2016	Structure 5, Post concrete removal, NW corner	AJLM
332	4557	SE	05/12/2016	Structure 5, Post concrete removal, SW corner	AJLM
333	4558	E	05/12/2016	Structure 5, Post concrete removal, Overall	AJLM
334	4559	NE	05/12/2016	Structure 5, Post concrete removal, Overall	AJLM
335	4560	SE	06/12/2016	Continuation of Wall [901] towards north ->	AJLM
336	4562	E	06/12/2016	Continuation of Wall [901] towards north ->	AJLM
337	4563	E	06/12/2016	Continuation of Wall [901] towards north ->	AJLM
338	4565	E	06/12/2016	Continuation of Wall [901] towards north	AJLM
339	4566	N	06/12/2016	Structure 9, Post concrete removal	AJLM
340	4567	V/SW	06/12/2016	Structure 9, Post concrete removal, SW corner->	AJLM
341	4568	V/W	06/12/2016	Structure 9, Post concrete removal, Lower west->	AJLM
342	4569	V/N	06/12/2016	Structure 9, Post concrete removal, Lower mid->	AJLM
343	4570	V/E	06/12/2016	Structure 9, Post concrete removal, SE corner	AJLM
344	4571	N	06/12/2016	Structure 9, Post concrete removal, E half	AJLM
345	4572	N	06/12/2016	Structure 9, Post concrete removal, W half	AJLM
346	4573	N	06/12/2016	Structure 9, Post concrete removal, N end	AJLM
347	4574	NW	06/12/2016	Concrete removed, S of Building 7	AJLM
348	4575	W	06/12/2016	Concrete removed, S of Building 7	AJLM
349	4576	WSW	06/12/2016	Concrete removed, Structure 9	AJLM
350	4577	SW	06/12/2016	Concrete removed, Structure 9	AJLM

<i>Image No.</i>	<i>Frame</i>	<i>Direction Facing</i>	<i>Date</i>	<i>Description</i>	<i>Taken By</i>
352	4579	W	06/12/2016	Concrete removed S of Building 7 at Gate	AJLM
353	4580	E	06/12/2016	Concrete removed S of Building 7 at Gate	AJLM
354	4581	N	06/12/2016	Building 7, Exterior, S elevation	AJLM
355	4582	N	06/12/2016	Building 7, Interior, N elevation	AJLM
356	4583	NW	06/12/2016	Building 7, Interior, NW corner	AJLM
357	4584	NE	06/12/2016	Building 7, Interior, NE corner	AJLM
358	4585	S	06/12/2016	Building 7, Interior, S elevation	AJLM
359	4586	SE	06/12/2016	Building 7, Interior, SE corner	AJLM
360	4587	SW	06/12/2016	Building 7, Interior, SW corner	AJLM
361	4588	N	06/12/2016	Building 7, Exterior, W elevation, N end	AJLM
362	4589	NE	06/12/2016	Building 7, Exterior, W elevation, Central	AJLM
363	4590	NE	06/12/2016	Building 7, Exterior, W elevation, Overall	AJLM
364	4591	NE	06/12/2016	Building 8, Exterior, W elevation	AJLM
365	4592	E	06/12/2016	Building 8, Interior, W range	AJLM
366	4593	V/E	06/12/2016	Building 8, Interior, W range, Roof structure	AJLM
367	4594	NE	06/12/2016	Building 8, Exterior, S elevation, W end	AJLM
368	4595	E	06/12/2016	Building 8, Exterior, S elevation, E half	AJLM
369	4596	N	06/12/2016	Building 8, Exterior, S elevation, E range	AJLM
370	4597	NW	06/12/2016	Building 8, Exterior, S elevation, W half	AJLM
371	4598	NW	06/12/2016	Building 8, Exterior, S elevation, W half	AJLM
372	4599	NW	06/12/2016	Building 8, Exterior, E elevation	AJLM
373	4600	W	06/12/2016	Building 8, Exterior, E elevation, Detail of earlier structure	AJLM
374	4601	W	06/12/2016	Building 8, Exterior, E elevation, Detail of earlier structure	AJLM
375	4602	W	06/12/2016	Building 8, Exterior, E elevation, Detail of earlier structure	AJLM
376	4603	S	06/12/2016	Building 8, Exterior, N elevation, E range	AJLM
377	4604	S	06/12/2016	Building 8, Exterior, N elevation, E range	AJLM
378	4605	SW	06/12/2016	Building 8, Exterior, N elevation, At N range	AJLM
379	4606	SW	06/12/2016	Building 8, Exterior, N elevation, At N range	AJLM
380	4607	W	06/12/2016	Building 8, Exterior, E elevation, N range	AJLM
381	4608	S	06/12/2016	Building 8, Exterior, N elevation, N range	AJLM
382	4609	S	06/12/2016	Building 8, Exterior, N elevation, N range, With wall stub	AJLM
383	4610	S	06/12/2016	Building 8, Exterior, N elevation, N range, Detail	AJLM
384	4612	S	06/12/2016	Building 8, Interior, N range	AJLM
385	4613	N	06/12/2016	Concrete removal W of Building 8	AJLM
386	4614	N	06/12/2016	Concrete removal W of Building 8	AJLM
387	4615	S	06/12/2016	Building 8 wall stub and base, Concrete removal within Structure 4	AJLM
388	4616	W	06/12/2016	Building 8 wall stub and base, Concrete removal within Structure 4	AJLM
389	4618	SW	06/12/2016	Structure 4, Concrete pad removal	AJLM
390	4619	S	06/12/2016	Structure 4, Concrete pad removal, W half	AJLM
391	4620	S	06/12/2016	Structure 4, Concrete pad removal, E half	AJLM
392	4621	SE	06/12/2016	Structure 4, Concrete pad removal, SE corner	AJLM
393	4622	SW	06/12/2016	Structure 4, Concrete pad removal, Overall	AJLM
394	4623	S	06/12/2016	Structure 4, Concrete pad removal, E half	AJLM
395	4624	SW	06/12/2016	Building 7, Exterior, E elevation, S half	AJLM
396	4625	W	06/12/2016	Building 7, Exterior, E elevation, Central	AJLM
397	4626	NW	06/12/2016	Building 7, Exterior, E elevation, N half	AJLM
398	4627	SW	06/12/2016	Building 7, Exterior, n ELEVATION	AJLM
399	4628	SE	06/12/2016	Building 8, Exterior, W/N ranges	AJLM
400	4630	NW	06/12/2016	Structure 6, General setting	AJLM
401	4631	N	13/12/2016	Road widening, General	AJLM
402	4632	N	13/12/2016	Road widening, General	AJLM
403	4633	E	13/12/2016	Road widening, W facing section	AJLM
404	4634	NE	13/12/2016	Road widening, Stripped topsoil and exposed section	AJLM
405	4635	N	13/12/2016	Road widening, Stripped topsoil and exposed section	AJLM
406	4636	SE	13/12/2016	Road widening, Stripped topsoil and exposed section	AJLM
407	4637	S	13/12/2016	Road widening, Stripped topsoil and exposed section	AJLM
408	4638	W	13/12/2016	Building 8, E gable, Overall	AJLM

<i>Image No.</i>	<i>Frame</i>	<i>Direction Facing</i>	<i>Date</i>	<i>Description</i>	<i>Taken By</i>
410	4640	W	13/12/2016	Building 8, E gable, S end, Lower ->	AJLM
411	4641	W	13/12/2016	Building 8, E gable, S end, Mid ->	AJLM
412	4642	W	13/12/2016	Building 8, E gable, S end, Upper ->	AJLM
413	4643	W	13/12/2016	Building 8, E gable, S end-Mid, Lower ->	AJLM
414	4644	W	13/12/2016	Building 8, E gable, S end-Mid, Lower-Mid ->	AJLM
415	4645	W	13/12/2016	Building 8, E gable, S end-Mid, Mid-Upper ->	AJLM
416	4646	W	13/12/2016	Building 8, E gable, S end-Mid, Upper ->	AJLM
417	4647	W	13/12/2016	Building 8, E gable, Mid- N end, Lower ->	AJLM
418	4648	W	13/12/2016	Building 8, E gable, Mid- N end, Lower-Mid ->	AJLM
419	4649	W	13/12/2016	Building 8, E gable, Mid- N end, Mid-Upper ->	AJLM
420	4650	W	13/12/2016	Building 8, E gable, Mid- N end, Upper ->	AJLM
421	4651	W	13/12/2016	Building 8, E gable, N end, Lower ->	AJLM
422	4652	W	13/12/2016	Building 8, E gable, N end, Lower-Mid ->	AJLM
423	4653	W	13/12/2016	Building 8, E gable, N end, Mid-Upper ->	AJLM
424	4654	W	13/12/2016	Building 8, E gable, N end, Upper	AJLM
425	4655	SW	13/12/2016	Building 8, E gable, Overall	AJLM
426	4656	W	13/12/2016	Building 8, E gable, Framing early phase	AJLM
427	4657	W	13/12/2016	Building 8, E gable, Early phase, S end	AJLM
428	4658	W	13/12/2016	Building 8, E gable, Early phase, NE corner	AJLM
429	4659	SW	13/12/2016	Building 8, NE corner	AJLM
430	4660	S	13/12/2016	Building 8, N elevation, E end, Detail	AJLM
431	4661	S	13/12/2016	Building 8, N elevation, E end, Detail	AJLM
432	4662	S	13/12/2016	Building 8, N elevation, E end ->	AJLM
433	4663	S	13/12/2016	Building 8, N elevation, ->	AJLM
434	4664	S	13/12/2016	Building 8, N elevation, ->	AJLM
435	4665	S	13/12/2016	Building 8, N elevation, ->	AJLM
436	4666	S	13/12/2016	Building 8, N elevation, ->	AJLM
437	4667	S	13/12/2016	Building 8, N elevation, At Bothy	AJLM
438	4668	S	13/12/2016	Building 8, N elevation, Door quoin detail	AJLM
439	4669	SW	13/12/2016	Building 8, N elevation, Door detail	AJLM
440	4670	W	13/12/2016	Building 8, E elevation, Bothy, S end ->	AJLM
441	4671	W	13/12/2016	Building 8, E elevation, Bothy, ->	AJLM
442	4672	W	13/12/2016	Building 8, E elevation, Bothy, ->	AJLM
443	4673	W	13/12/2016	Building 8, E elevation, Bothy, ->	AJLM
444	4674	W	13/12/2016	Building 8, E elevation, Bothy, ->	AJLM
445	4675	W	13/12/2016	Building 8, E elevation, Bothy, N end	AJLM
446	4676	SW	13/12/2016	Building 8, E elevation, Bothy, NE corner	AJLM
447	4677	SW	13/12/2016	Building 8, Bothy interior, E/W wall	AJLM
448	4678	SW	13/12/2016	Building 8, Bothy interior, E/W wall	AJLM
449	4679	W	13/12/2016	Building 8, Bothy interior, N/S wall abutting E/W wall	AJLM
450	4680	W	13/12/2016	Building 8, Bothy interior, N/S wall abutting E/W wall	AJLM
451	4681	NW	13/12/2016	Building 8, Bothy interior, N interior wall	AJLM
452	4682	NW	13/12/2016	Building 8, Bothy interior, NW corner	AJLM
453	4683	SW	13/12/2016	Building 8, Bothy interior, SW corner	AJLM
454	4684	W	13/12/2016	Building 8, Bothy interior, SW corner	AJLM
455	4685	S	13/12/2016	Building 8, N elevation, Byre, Door detail	AJLM
456	4686	S	13/12/2016	Building 8, N elevation, Byre, Possible rebuild	AJLM
457	4687	S	13/12/2016	Building 8, N elevation, Byre, Possible rebuild	AJLM
458	4688	SW	13/12/2016	Building 8, N elevation, Byre, Possible rebuild	AJLM
459	4689	SE	13/12/2016	Building 8, N elevation, Byre, Pre Improvement	AJLM
460	4690	S	13/12/2016	Building 8, N elevation, Byre, Possible rebuild, Detail	AJLM
461	4691	N	13/12/2016	Road grading on to Blaze layer	AJLM
462	4692	N	13/12/2016	Road grading on to Blaze layer	AJLM
463	4693	S	13/12/2016	Road grading on to Blaze layer	AJLM
464	4694	S	13/12/2016	Road widening, Stripped vegetation	AJLM
465	4695	S	13/12/2016	Road widening, Stripped vegetation	AJLM
466	921	WNW	20/09/2016	Building 8, E facing gable, SE corner	TA
467	922	NE	20/09/2016	Building 3, S facing gable, SW corner	TA
468	923	NW	20/09/2016	Building 3, S facing gable, SE corner	TA
469	924	NW	20/09/2016	Building 2, E end, S facing elevation	TA
470	925	WNW	20/09/2016	Building 2, W end, S facing elevation	TA
471	926	SW	20/09/2016	Building 8, E facing gable, NE corner	TA
472	927	SW	20/09/2016	Building 8, N range at N elevation, E end	TA

<i>Image No.</i>	<i>Frame</i>	<i>Direction Facing</i>	<i>Date</i>	<i>Description</i>	<i>Taken By</i>
473	928	SE	20/09/2016	Building 8, Farmhouse frontage	TA
474	929	SW	20/09/2016	Building 8, Bothy, NE corner	TA
475	930	SW	20/09/2016	Structure 4 through to Building 8	TA
476	931	SSE	20/09/2016	Structure 4, Building 8, Structure 5, W facing elevation	TA
477	932	NE	20/09/2016	Building 2, SW corner, Through to Structure 1	TA
478	933	ENE	20/09/2016	Building 8, W range, SW corner	TA
479	934	NE	20/09/2016	Building 8, W end, S elevation, From Structure 5	TA
480	935	N	20/09/2016	Building 8, W end, S elevation, Reuse detail	TA
481	936	NW	20/09/2016	Building 7, S gable, SE corner	TA
482	937	SE	20/09/2016	Building 2, W gable, NW corner	TA
483	938	E	20/09/2016	Building 2, Interior, Gable between rooms B/C	TA
484	939	W	20/09/2016	Structure 1, E elevation	TA
485	940	SW	20/09/2016	Building 2, E end, N elevation, NE corner	TA
486	941	SW	20/09/2016	Building 3, N gable, NE corner	TA
487	942	S	20/09/2016	Structure 6, W side towards Structure 1	TA
488	943	SW	20/09/2016	Building 8, Bothy interior, N facing elevation	TA
489	944	-	20/09/2016	Building 8, Bothy interior, Plaster detail	TA
490	945	-	20/09/2016	Building 8, Bothy interior, Plaster detail	TA
491	946	-	20/09/2016	Building 8, Bothy interior, Plaster detail	TA
492	947	-	20/09/2016	Building 8, Bothy interior, Plaster detail	TA
493	948	NE	20/09/2016	Building 8, E end, Farmhouse, S facing elevation	TA
494	949	N	20/09/2016	Building 8, S facing elevation, At rear entrance	TA
495	950	NW	20/09/2016	Building 8, S facing elevation, Showing Structure 5	TA
496	951	N	20/09/2016	Field E of farmtrack at gate	TA
497	952	W	20/09/2016	From gate towards steading	TA
498	953	N	20/09/2016	From gate up farmtrack	TA
499	954	NW	20/09/2016	From farmtrack across N field	TA
500	955	W	20/09/2016	From farmtrack towards Structure 1	TA
501	956	NW	20/09/2016	N field from farmtrack	TA
502	957	W	20/09/2016	N field from farmtrack	TA
503	958	SW	20/09/2016	Farmstead from farmtrack	TA
504	6492	N	28/02/2017	Living Room, N Wall, W end	AJLM
505	6493	N	28/02/2017	Living Room, N Wall, W end, w/ Flash	AJLM
506	6494	NW	28/02/2017	Living Room, N Wall, W end	AJLM
507	6495	NE	28/02/2017	Living Room, N Wall, Overall	AJLM
508	6496	N	28/02/2017	Living Room, N Wall, Overall	AJLM
509	6497	NW	28/02/2017	Living Room, N Wall, W end, Upper	AJLM
510	6498	N	28/02/2017	Living Room, N Wall, Overall, Upper	AJLM
511	6499	N	28/02/2017	Living Room, N Wall, W end	AJLM
512	6500	N	28/02/2017	Living Room, N Wall, W end, Lower	AJLM
513	6501	N	28/02/2017	Living Room, N Wall, W end, Upper	AJLM
514	6502	NE	28/02/2017	Living Room, N Wall, Central, Upper	AJLM
515	6503	NE	28/02/2017	Living Room, N Wall, Central, Lower	AJLM
516	6504	NE	28/02/2017	Living Room, N Wall, Window ingo, Lower	AJLM
517	6505	N	28/02/2017	Living Room, N Wall, E end	AJLM
518	6506	N	28/02/2017	Living Room, N Wall, E end, w/ Flash	AJLM
519	6507	NE	28/02/2017	Living Room, NE corner	AJLM
520	6508	E	28/02/2017	Living Room, E wall, N end	AJLM
521	6510	E	28/02/2017	Living Room, E wall, N end, Cupboard	AJLM
522	6511	E	28/02/2017	Living Room, E wall, N half	AJLM
523	6512	E	28/02/2017	Living Room, E wall, S half	AJLM
524	6513	E	28/02/2017	Living Room, E wall, Fireplace	AJLM
525	6514	E	28/02/2017	Living Room, E wall, Fireplace, Upper	AJLM
526	6515	E	28/02/2017	Living Room, E wall, Fireplace/ Door	AJLM
527	6516	E	28/02/2017	Living Room, E wall, Fireplace/ Door, Lintel	AJLM
528	6517	E	28/02/2017	Living Room, E wall, Door lintel detail	AJLM
529	6518	NE	28/02/2017	Living Room, E wall, Door lintel detail	AJLM
530	6519	E	28/02/2017	Living Room, E wall, S end	AJLM
531	6520	SE	28/02/2017	Living Room, SE corner	AJLM
532	6521	SE	28/02/2017	Living Room, Ceiling	AJLM
533	6522	NE	28/02/2017	Living Room, E wall, Overall	AJLM
534	6523	S	28/02/2017	Living Room, S wall, E half	AJLM
535	6524	S	28/02/2017	Living Room, S wall, E half	AJLM

<i>Image No.</i>	<i>Frame</i>	<i>Direction Facing</i>	<i>Date</i>	<i>Description</i>	<i>Taken By</i>
536	6525	S	28/02/2017	Living Room, S wall, E half, w/ Flash	AJLM
537	6526	SE	28/02/2017	Living Room, S wall, Window, Lower	AJLM
538	6527	SE	28/02/2017	Living Room, S wall, Window, Upper	AJLM
539	6528	SW	28/02/2017	Living Room, S wall, Window, Lower	AJLM
540	6529	SW	28/02/2017	Living Room, S wall, Window, Upper	AJLM
541	6530	S	28/02/2017	Living Room, S wall, Window, Lower	AJLM
542	6531	S	28/02/2017	Living Room, S wall, W end	AJLM
543	6532	S	28/02/2017	Living Room, S wall, W end, Ceiling/ joists	AJLM
544	6533	SW	28/02/2017	Living Room, SW corner	AJLM
545	6534	SW	28/02/2017	Living Room, SW corner, Lower	AJLM
546	6535	NW	28/02/2017	Living Room, Towards NW corner, Sleepers	AJLM
547	6536	W	28/02/2017	Living Room, W wall, S half	AJLM
548	6537	W	28/02/2017	Living Room, W wall, N half	AJLM
549	6538	SW	28/02/2017	Living Room, SW corner	AJLM
550	6539	SE	28/02/2017	Living Room, SE corner	AJLM
551	6540	SE	28/02/2017	Living Room, E wall	AJLM
552	6541	NE	28/02/2017	Living Room, E wall	AJLM
553	6542	NE	28/02/2017	Living Room, NE corner	AJLM
554	6543	NW	28/02/2017	Living Room, N wall	AJLM
555	6544	NW	28/02/2017	Living Room, W wall	AJLM
556	6545	E	28/02/2017	Living Room, Fireplace from doorway	AJLM
557	6546	S	28/02/2017	Hall, From ntrance	AJLM
558	6547	S	28/02/2017	Hall, From entrance, Upper	AJLM
559	6548	SE	28/02/2017	Hall, E wall	AJLM
560	6549	SW	28/02/2017	Hall, W wall	AJLM
561	6550	N	28/02/2017	Hall, Front door	AJLM
562	6551	NE	28/02/2017	Hall, NE corner	AJLM
563	6552	NE	28/02/2017	Hall, NE corner, Upper	AJLM
564	6553	N	28/02/2017	Hall, Above front door	AJLM
565	6554	S	28/02/2017	Hall, W of stair	AJLM
566	6555	SE	28/02/2017	Hall, Showing stair	AJLM
567	6556	SE	28/02/2017	Hall, E wall at stair	AJLM
568	6557	SE	28/02/2017	Hall, E wall at stair, Upper	AJLM
569	6558	SE	28/02/2017	Hall, E wall, Stair, S wall	AJLM
570	6559	NW	28/02/2017	Hall, W wall, Door from stair	AJLM
571	6560	SE	28/02/2017	Store, E wall	AJLM
572	6561	SE	28/02/2017	Store, E wall, Upper	AJLM
573	6562	SW	28/02/2017	Store, W wall	AJLM
574	6563	S	28/02/2017	Store, S wall, Wide	AJLM
575	6564	SE	28/02/2017	Store, SE corner	AJLM
576	6565	S	28/02/2017	Store, S wall	AJLM
577	6566	E	28/02/2017	Kitchen, E wall/ Former store	AJLM
578	6567	SE	28/02/2017	Kitchen, SE corner	AJLM
579	6568	S	28/02/2017	Kitchen, S wall/ SW corner/ Store	AJLM
580	6569	W	28/02/2017	Kitchen, W wall, Fireplace	AJLM
581	6570	NW	28/02/2017	Kitchen, W wall, Fireplace	AJLM
582	6571	NW	28/02/2017	Kitchen, N wall	AJLM
583	6572	N	28/02/2017	Kitchen, N wall	AJLM
584	6573	NE	28/02/2017	Kitchen, E wall,	AJLM
585	6574	E	28/02/2017	Kitchen, E wall, N end	AJLM
586	6575	E	28/02/2017	Kitchen, E wall, S end	AJLM
587	6576	S	28/02/2017	Kitchen, S wall, E end	AJLM
588	6577	SW	28/02/2017	Kitchen, S wall, W end	AJLM
589	6578	SW	28/02/2017	Kitchen, S wall, Window, Upper	AJLM
590	6579	SW	28/02/2017	Kitchen, S wall, W end	AJLM
591	6580	WSW	28/02/2017	Kitchen, S wall, W end	AJLM
592	6581	W	28/02/2017	Kitchen, W wall, S entrance, Upper	AJLM
593	6582	NW	28/02/2017	Kitchen, W wall, S entrance, N jamb	AJLM
594	6583	W	28/02/2017	Kitchen, W wall, S entrance, Into Dining room	AJLM
595	6584	W	28/02/2017	Kitchen, W wall, S entrance, Into Dining room	AJLM
596	6585	W	28/02/2017	Kitchen, W wall, S half	AJLM
597	6586	W	28/02/2017	Kitchen, W wall, S half, w/ Flash	AJLM
598	6587	W	28/02/2017	Kitchen, W wall, N half	AJLM

<i>Image No.</i>	<i>Frame</i>	<i>Direction Facing</i>	<i>Date</i>	<i>Description</i>	<i>Taken By</i>
599	6588	W	28/02/2017	Kitchen, W wall, Nook and fireplace	AJLM
600	6589	NW	28/02/2017	Kitchen, W wall, Nook and fireplace	AJLM
601	6590	NNW	28/02/2017	Kitchen, W wall, Nook and fireplace	AJLM
602	6591	NNW	28/02/2017	Kitchen, W wall, Fireplace, Upper	AJLM
603	6592	SW	28/02/2017	Kitchen, W wall, Fireplace	AJLM
604	6593	W	28/02/2017	Kitchen, W wall, Fireplace, Interior	AJLM
605	6594	W	28/02/2017	Kitchen, W wall, N entrance	AJLM
606	6595	W	28/02/2017	Kitchen, W wall, N entrance, Lintel detail	AJLM
607	6596	W	28/02/2017	Kitchen, W wall, N entrance, Lintel detail	AJLM
608	6597	N	28/02/2017	Kitchen, N wall, W half	AJLM
609	6598	N	28/02/2017	Kitchen, N wall, W half, w/ Flash	AJLM
610	6599	N	28/02/2017	Kitchen, N wall, E half	AJLM
611	6600	NW	28/02/2017	Kitchen, NW corner	AJLM
612	6601	SW	28/02/2017	Kitchen, N entrance, S jamb	AJLM
613	6602	SW	28/02/2017	Kitchen, N entrance, S jamb, Upper	AJLM
614	6603	W	28/02/2017	Kitchen, N entrance, Lintel detail	AJLM
615	6604	NW	28/02/2017	Kitchen, N entrance, Lintel detail	AJLM
616	6605	E	28/02/2017	Kitchen, N entrance, Lintel detail	AJLM
617	6606	S	28/02/2017	Dining Room, S wall, Overall	AJLM
618	6607	SW	28/02/2017	Dining Room, SW corner	AJLM
619	6608	SW	28/02/2017	Dining Room, W wall	AJLM
620	6609	NW	28/02/2017	Dining Room, W wall	AJLM
621	6610	NW	28/02/2017	Dining Room, NW corner	AJLM
622	6611	N	28/02/2017	Dining Room, N wall	AJLM
623	6612	N	28/02/2017	Dining Room, NE corner	AJLM
624	6613	N	28/02/2017	Dining Room, E wall	AJLM
625	6614	E	28/02/2017	Dining Room, E wall	AJLM
626	6615	E	28/02/2017	Dining Room, E wall, N end	AJLM
627	6616	SE	28/02/2017	Dining Room, SE corner	AJLM
628	6617	S	28/02/2017	Dining Room, S wall, Overall	AJLM
629	6618	E	28/02/2017	Dining Room, E wall, N end, Entrance	AJLM
630	6619	E	28/02/2017	Dining Room, E wall, N end	AJLM
631	6620	E	28/02/2017	Dining Room, E wall, S end	AJLM
632	6621	E	28/02/2017	Dining Room, E wall, S end, Entrance	AJLM
633	6624	E	28/02/2017	Dining Room, E wall, Upper gable	AJLM
634	6625	NE	28/02/2017	Dining Room, E wall, S entrance, N jamb	AJLM
635	6626	S	28/02/2017	Dining Room, S wall, Overall	AJLM
636	6627	SE	28/02/2017	Dining Room, S wall, Window	AJLM
637	6628	SW	28/02/2017	Dining Room, S wall, Window	AJLM
638	6629	S	28/02/2017	Dining Room, S wall, Window, Upper	AJLM
639	6630	S	28/02/2017	Dining Room, S wall, Overall	AJLM
640	6631	W	28/02/2017	Dining Room, W wall, S half	AJLM
641	6632	W	28/02/2017	Dining Room, W wall, At fireplace	AJLM
642	6633	W	28/02/2017	Dining Room, W wall, N half	AJLM
643	6634	W	28/02/2017	Dining Room, W wall, N entrance	AJLM
644	6635	N	28/02/2017	Dining Room, N wall, Overall	AJLM
645	6636	NE	28/02/2017	Dining Room, N wall, E end	AJLM
646	6637	NW	28/02/2017	Dining Room, N wall, W end	AJLM
647	6638	NE	28/02/2017	Dining Room, N wall, E end, With lintel	AJLM
648	6639	SW	28/02/2017	Family Room, SW corner w/ Bathroom	AJLM
649	6640	SW	28/02/2017	Family Room, W wall w/ Bathroom	AJLM
650	6641	NW	28/02/2017	Family Room, NW corner	AJLM
651	6642	NW	28/02/2017	Family Room, N wall	AJLM
652	6643	S	28/02/2017	Family Room, S wall, Bathroom	AJLM
653	6644	SE	28/02/2017	Family Room, SE corner	AJLM
654	6645	E	28/02/2017	Family Room, E wall, N end	AJLM
655	6646	W	28/02/2017	Byre from Family Room	AJLM
656	6647	W	28/02/2017	Byre from Family Room	AJLM
657	6648	N	28/02/2017	Family Room, N wall, W half	AJLM
658	6649	N	28/02/2017	Family Room, N wall, W half	AJLM
659	6650	NE	28/02/2017	Family Room, N wall, E half	AJLM
660	6651	NE	28/02/2017	Family Room, Joists/ Roof structure	AJLM
661	6652	W	28/02/2017	Kitchen, W wall, N entrance, Lintels	AJLM

<b>Image No.</b>	<b>Frame</b>	<b>Direction Facing</b>	<b>Date</b>	<b>Description</b>	<b>Taken By</b>
662	6653	NW	28/02/2017	Kitchen, W wall, N entrance, Lintels	AJLM
663	6654	NW	28/02/2017	Kitchen, W wall, N entrance, Joists	AJLM
664	6655	NW	28/02/2017	Kitchen, W wall, N entrance, Joists	AJLM
665	6656	SW	28/02/2017	Exterior Store, S wall	AJLM
666	6657	W	28/02/2017	Exterior Store, NW corner	AJLM
667	6658	NW	28/02/2017	Exterior Store, N wall	AJLM
668	6659	SW	28/02/2017	Exterior Store, SW corner	AJLM
669	6660	S	28/02/2017	Hall, Stair, Overall	AJLM
670	6661	S	28/02/2017	Hall, S wall at first landing	AJLM
671	6662	SW	28/02/2017	Hall, S wall at first landing	AJLM
672	6663	NW	28/02/2017	Hall, Stair, Bannister	AJLM
673	6664	W	28/02/2017	Hall, Stair, Bannister	AJLM
674	6665	W	28/02/2017	Hall, Stair, Bannister	AJLM
675	6666	W	28/02/2017	Hall, Stair, Bannister	AJLM
676	6668	E	28/02/2017	Stair, First landing, Roof structure	AJLM
677	6669	W	28/02/2017	Stair, First landing, Roof structure	AJLM
678	6670	SW	28/02/2017	Stair, First landing, Window	AJLM
679	6671	W	28/02/2017	Stair, First landing, W wall	AJLM
680	6672	NW	28/02/2017	Stair, Towards top landing, W wall	AJLM
681	6673	N	28/02/2017	Stair, Towards top landing, W wall	AJLM
682	6674	N	28/02/2017	Stair, Towards top landing	AJLM
683	6675	N	28/02/2017	Stair, Towards top landing	AJLM
684	6676	NW	28/02/2017	Stair, First landing down towards front door	AJLM
685	6677	S	28/02/2017	Stair, Top landing down to window	AJLM
686	6678	SE	28/02/2017	Stair, Top landing down to SE corner	AJLM
687	6679	SW	28/02/2017	Bedroom 2, S wall/ SW corner	AJLM
688	6681	W	28/02/2017	Bedroom 2, W wall	AJLM
689	6682	NW	28/02/2017	Bedroom 2, NW corner	AJLM
690	6683	N	28/02/2017	Bedroom 2, N wall/ Window	AJLM
691	6684	W	28/02/2017	Bedroom 2, W wall, Fireplace	AJLM
692	6685	W	28/02/2017	Bedroom 2, W wall, Fireplace	AJLM
693	6686	NW	28/02/2017	Bedroom 2, NW corner	AJLM
694	6687	N	28/02/2017	Bedroom 2, Above window	AJLM
695	6688	NE	28/02/2017	Bedroom 2, NE corner	AJLM
696	6689	E	28/02/2017	Bedroom 2, E wall	AJLM
697	6690	SE	28/02/2017	Bedroom 2, SE corner	AJLM
698	6691	NE	28/02/2017	Bedroom 1, NE corner	AJLM
699	6692	NE	28/02/2017	Bedroom 1, E wall	AJLM
700	6693	SE	28/02/2017	Bedroom 1, E wall	AJLM
701	6694	SW	28/02/2017	Bedroom 1, SW corner	AJLM
702	6695	W	28/02/2017	Bedroom 1, Through Box Room	AJLM
703	6696	E	28/02/2017	Bedroom 1, E wall, N end	AJLM
704	6697	E	28/02/2017	Bedroom 1, E wall, N end	AJLM
705	6698	E	28/02/2017	Bedroom 1, E wall, S end	AJLM
706	6699	W	28/02/2017	Bedroom 1, W wall	AJLM
707	6700	N	28/02/2017	Bedroom 1, Above window	AJLM
708	6701	NE	28/02/2017	Bedroom 1, NE corner	AJLM
709	6702	SE	28/02/2017	Farmhouse, N elevation	AJLM
710	6703	S	28/02/2017	Farmhouse, N elevation	AJLM
711	6704	SW	28/02/2017	Farmhouse, Bothy	AJLM
712	6705	W	28/02/2017	Building 7, E elevation	AJLM
713	6706	W	28/02/2017	Building 7, E elevation	AJLM
714	6707	SW	28/02/2017	Farmhouse, Bothy	AJLM
715	6708	S	28/02/2017	Farmhouse, Byre	AJLM
716	6709	SE	28/02/2017	Farmhouse, Byre	AJLM
717	6710	S	28/02/2017	Farmhouse, Byre	AJLM
718	6711	SE	28/02/2017	Farmhouse, Byre	AJLM
719	6712	SW	28/02/2017	Farmhouse, E gable	AJLM
720	6713	W	28/02/2017	Glenside Farm from The Avenue	AJLM
721	6714	W	28/02/2017	Glenside Farm from The Avenue	AJLM
722	6715	W	28/02/2017	Glenside Farm from The Avenue	AJLM
723	6716	W	28/02/2017	Glenside Farm from The Avenue	AJLM
724	6717	NW	28/02/2017	Glenside Farm from The Avenue	AJLM



<b><i>Image No.</i></b>	<b><i>Frame</i></b>	<b><i>Direction Facing</i></b>	<b><i>Date</i></b>	<b><i>Description</i></b>	<b><i>Taken By</i></b>
725	6718	NW	28/02/2017	Glenside Farm from The Avenue	AJLM
726	6719	NW	28/02/2017	Glenside Farm from The Avenue	AJLM
727	6720	NW	28/02/2017	Glenside Farm from The Avenue	AJLM

Appendix D Photographic Thumbnails



2244 (001).JPG



2244 (002).JPG



2244 (003).JPG



2244 (004).JPG



2244 (005).JPG



2244 (006).JPG



2244 (007).JPG



2244 (008).JPG



2244 (009).JPG



2244 (010).JPG



2244 (011).JPG



2244 (012).JPG



2244 (013).JPG



2244 (014).JPG



2244 (015).JPG



2244 (016).JPG



2244 (017).JPG



2244 (018).JPG



2244 (019).JPG



2244 (020).JPG



2244 (021).JPG



2244 (022).JPG



2244 (023).JPG



2244 (024).JPG



2244 (025).JPG



2244 (026).JPG



2244 (027).JPG



2244 (028).JPG



2244 (029).JPG



2244 (030).JPG



2244 (031).JPG



2244 (032).JPG



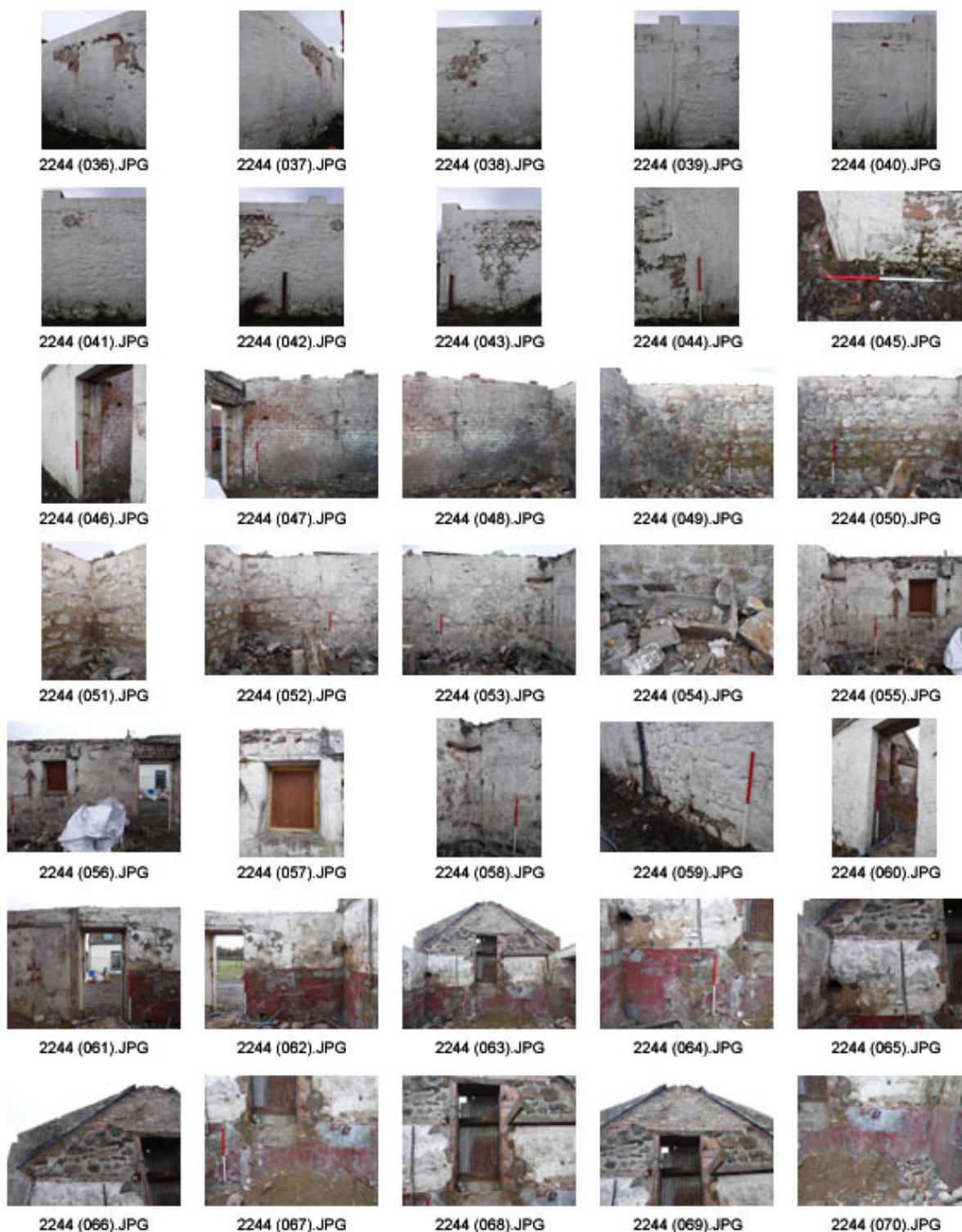
2244 (033).JPG



2244 (034).JPG



2244 (035).JPG





2244 (071).JPG



2244 (072).JPG



2244 (073).JPG



2244 (074).JPG



2244 (075).JPG



2244 (076).JPG



2244 (077).JPG



2244 (078).JPG



2244 (079).JPG



2244 (080).JPG



2244 (081).JPG



2244 (082).JPG



2244 (083).JPG



2244 (084).JPG



2244 (085).JPG



2244 (086).JPG



2244 (087).JPG



2244 (088).JPG



2244 (089).JPG



2244 (090).JPG



2244 (091).JPG



2244 (092).JPG



2244 (093).JPG



2244 (094).JPG



2244 (095).JPG



2244 (096).JPG



2244 (097).JPG



2244 (098).JPG



2244 (099).JPG



2244 (100).JPG



2244 (101).JPG



2244 (102).JPG



2244 (103).JPG



2244 (104).JPG



2244 (105).JPG



2244 (106).JPG



2244 (107).JPG



2244 (108).JPG



2244 (109).JPG



2244 (110).JPG



2244 (111).JPG



2244 (112).JPG



2244 (113).JPG



2244 (114).JPG



2244 (115).JPG



2244 (116).JPG



2244 (117).JPG



2244 (118).JPG



2244 (119).JPG



2244 (120).JPG



2244 (121).JPG



2244 (122).JPG



2244 (123).JPG



2244 (124).JPG



2244 (125).JPG



2244 (126).JPG



2244 (127).JPG



2244 (128).JPG



2244 (129).JPG



2244 (130).JPG



2244 (131).JPG



2244 (132).JPG



2244 (133).JPG



2244 (134).JPG



2244 (135).JPG



2244 (136).JPG



2244 (137).JPG



2244 (138).JPG



2244 (139).JPG



2244 (140).JPG



2244 (141).JPG



2244 (142).JPG



2244 (143).JPG



2244 (144).JPG



2244 (145).JPG



2244 (146).JPG



2244 (147).JPG



2244 (148).JPG



2244 (149).JPG



2244 (150).JPG



2244 (151).JPG



2244 (152).JPG



2244 (153).JPG



2244 (154).JPG



2244 (155).JPG



2244 (156).JPG



2244 (157).JPG



2244 (158).JPG



2244 (159).JPG



2244 (160).JPG



2244 (161).JPG



2244 (162).JPG



2244 (163).JPG



2244 (164).JPG



2244 (165).JPG



2244 (166).JPG



2244 (167).JPG



2244 (168).JPG



2244 (169).JPG



2244 (170).JPG



2244 (171).JPG



2244 (172).JPG



2244 (173).JPG



2244 (174).JPG



2244 (175).JPG



2244 (176).JPG



2244 (177).JPG



2244 (178).JPG



2244 (179).JPG



2244 (180).JPG



2244 (181).JPG



2244 (182).JPG



2244 (183).JPG



2244 (184).JPG



2244 (185).JPG



2244 (186).JPG



2244 (187).JPG



2244 (188).JPG



2244 (189).JPG



2244 (190).JPG



2244 (191).JPG



2244 (192).JPG



2244 (193).JPG



2244 (194).JPG



2244 (195).JPG



2244 (196).JPG



2244 (197).JPG



2244 (198).JPG



2244 (199).JPG



2244 (200).JPG



2244 (201).JPG



2244 (202).JPG



2244 (203).JPG



2244 (204).JPG



2244 (205).JPG



2244 (206).JPG



2244 (207).JPG



2244 (208).JPG



2244 (209).JPG



2244 (210).JPG



2244 (211).JPG



2244 (212).JPG



2244 (213).JPG



2244 (214).JPG



2244 (215).JPG



2244 (216).JPG



2244 (217).JPG



2244 (218).JPG



2244 (219).JPG



2244 (220).JPG



2244 (221).JPG



2244 (222).JPG



2244 (223).JPG



2244 (224).JPG



2244 (225).JPG



2244 (226).JPG



2244 (227).JPG



2244 (228).JPG



2244 (229).JPG



2244 (230).JPG



2244 (231).JPG



2244 (232).JPG



2244 (233).JPG



2244 (234).JPG



2244 (235).JPG



2244 (236).JPG



2244 (237).JPG



2244 (238).JPG



2244 (239).JPG



2244 (240).JPG



2244 (241).JPG



2244 (242).JPG



2244 (243).JPG



2244 (244).JPG



2244 (245).JPG







2244 (281).JPG



2244 (282).JPG



2244 (283).JPG



2244 (284).JPG



2244 (285).JPG



2244 (286).JPG



2244 (287).JPG



2244 (288).JPG



2244 (289).JPG



2244 (290).JPG



2244 (291).JPG



2244 (292).JPG



2244 (293).JPG



2244 (294).JPG



2244 (295).JPG



2244 (296).JPG



2244 (297).JPG



2244 (298).JPG



2244 (299).JPG



2244 (300).JPG



2244 (301).JPG



2244 (302).JPG



2244 (303).JPG



2244 (304).JPG



2244 (305).JPG



2244 (306).JPG



2244 (307).JPG



2244 (308).JPG



2244 (309).JPG



2244 (310).JPG



2244 (311).JPG



2244 (312).JPG



2244 (313).JPG



2244 (314).JPG



2244 (315).JPG



2244 (316).JPG



2244 (317).JPG



2244 (318).JPG



2244 (319).JPG



2244 (320).JPG



2244 (321).JPG



2244 (322).JPG



2244 (323).JPG



2244 (324).JPG



2244 (325).JPG



2244 (326).JPG



2244 (327).JPG



2244 (328).JPG



2244 (329).JPG



2244 (330).JPG



2244 (331).JPG



2244 (332).JPG



2244 (333).JPG



2244 (334).JPG



2244 (335).JPG



2244 (336).JPG



2244 (337).JPG



2244 (338).JPG



2244 (339).JPG



2244 (340).JPG



2244 (341).JPG



2244 (342).JPG



2244 (343).JPG



2244 (344).JPG



2244 (345).JPG



2244 (346).JPG



2244 (347).JPG



2244 (348).JPG



2244 (349).JPG



2244 (350).JPG





2244 (386).JPG



2244 (387).JPG



2244 (388).JPG



2244 (389).JPG



2244 (390).JPG



2244 (391).JPG



2244 (392).JPG



2244 (393).JPG



2244 (394).JPG



2244 (395).JPG



2244 (396).JPG



2244 (397).JPG



2244 (398).JPG



2244 (399).JPG



2244 (400).JPG



2244 (401).JPG



2244 (402).JPG



2244 (403).JPG



2244 (404).JPG



2244 (405).JPG



2244 (406).JPG



2244 (407).JPG



2244 (408).JPG



2244 (409).JPG



2244 (410).JPG



2244 (411).JPG



2244 (412).JPG



2244 (413).JPG



2244 (414).JPG



2244 (415).JPG



2244 (416).JPG



2244 (417).JPG



2244 (418).JPG



2244 (419).JPG



2244 (420).JPG



2244 (421).JPG



2244 (422).JPG



2244 (423).JPG



2244 (424).JPG



2244 (425).JPG



2244 (426).JPG



2244 (427).JPG



2244 (428).JPG



2244 (429).JPG



2244 (430).JPG



2244 (431).JPG



2244 (432).JPG



2244 (433).JPG



2244 (434).JPG



2244 (435).JPG



2244 (436).JPG



2244 (437).JPG



2244 (438).JPG



2244 (439).JPG



2244 (440).JPG



2244 (441).JPG



2244 (442).JPG



2244 (443).JPG



2244 (444).JPG



2244 (445).JPG



2244 (446).JPG



2244 (447).JPG



2244 (448).JPG



2244 (449).JPG



2244 (450).JPG



2244 (451).JPG



2244 (452).JPG



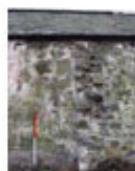
2244 (453).JPG



2244 (454).JPG



2244 (455).JPG



2244 (456).JPG



2244 (457).JPG



2244 (458).JPG



2244 (459).JPG



2244 (460).JPG



2244 (461).JPG



2244 (462).JPG



2244 (463).JPG



2244 (464).JPG



2244 (465).JPG



2244 (466).JPG



2244 (467).JPG



2244 (468).JPG



2244 (469).JPG



2244 (470).JPG



2244 (471).JPG



2244 (472).JPG



2244 (473).JPG



2244 (474).JPG



2244 (475).JPG



2244 (476).JPG



2244 (477).JPG



2244 (478).JPG



2244 (479).JPG



2244 (480).JPG



2244 (481).JPG



2244 (482).JPG



2244 (483).JPG



2244 (484).JPG



2244 (485).JPG



2244 (486).JPG



2244 (487).JPG



2244 (488).JPG



2244 (489).JPG



2244 (490).JPG







2244 (526).JPG



2244 (527).JPG



2244 (528).JPG



2244 (529).JPG



2244 (530).JPG



2244 (531).JPG



2244 (532).JPG



2244 (533).JPG



2244 (534).JPG



2244 (535).JPG



2244 (536).JPG



2244 (537).JPG



2244 (538).JPG



2244 (539).JPG



2244 (540).JPG



2244 (541).JPG



2244 (542).JPG



2244 (543).JPG



2244 (544).JPG



2244 (545).JPG



2244 (546).JPG



2244 (547).JPG



2244 (548).JPG



2244 (549).JPG



2244 (550).JPG



2244 (551).JPG



2244 (552).JPG



2244 (553).JPG



2244 (554).JPG



2244 (555).JPG



2244 (556).JPG



2244 (557).JPG



2244 (558).JPG



2244 (559).JPG



2244 (560).JPG



2244 (561).JPG



2244 (562).JPG



2244 (563).JPG



2244 (564).JPG



2244 (565).JPG



2244 (566).JPG



2244 (567).JPG



2244 (568).JPG



2244 (569).JPG



2244 (570).JPG



2244 (571).JPG



2244 (572).JPG



2244 (573).JPG



2244 (574).JPG



2244 (575).JPG



2244 (576).JPG



2244 (577).JPG



2244 (578).JPG



2244 (579).JPG



2244 (580).JPG



2244 (581).JPG



2244 (582).JPG



2244 (583).JPG



2244 (584).JPG



2244 (585).JPG



2244 (586).JPG



2244 (587).JPG



2244 (588).JPG



2244 (589).JPG



2244 (590).JPG



2244 (591).JPG



2244 (592).JPG



2244 (593).JPG



2244 (594).JPG



2244 (595).JPG



2244 (596).JPG



2244 (597).JPG



2244 (598).JPG



2244 (599).JPG



2244 (600).JPG



2244 (601).JPG



2244 (602).JPG



2244 (603).JPG



2244 (604).JPG



2244 (605).JPG



2244 (606).JPG



2244 (607).JPG



2244 (608).JPG



2244 (609).JPG



2244 (610).JPG



2244 (611).JPG



2244 (612).JPG



2244 (613).JPG



2244 (614).JPG



2244 (615).JPG



2244 (616).JPG



2244 (617).JPG



2244 (618).JPG



2244 (619).JPG



2244 (620).JPG



2244 (621).JPG



2244 (622).JPG



2244 (623).JPG



2244 (624).JPG



2244 (625).JPG



2244 (626).JPG



2244 (627).JPG



2244 (628).JPG



2244 (629).JPG



2244 (630).JPG



2244 (631).JPG



2244 (632).JPG



2244 (633).JPG



2244 (634).JPG



2244 (635).JPG



2244 (636).JPG



2244 (637).JPG



2244 (638).JPG



2244 (639).JPG



2244 (640).JPG



2244 (641).JPG



2244 (642).JPG



2244 (643).JPG



2244 (644).JPG



2244 (645).JPG



2244 (646).JPG



2244 (647).JPG



2244 (648).JPG



2244 (649).JPG



2244 (650).JPG



2244 (651).JPG



2244 (652).JPG



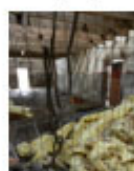
2244 (653).JPG



2244 (654).JPG



2244 (655).JPG



2244 (656).JPG



2244 (657).JPG



2244 (658).JPG



2244 (659).JPG



2244 (660).JPG



2244 (661).JPG



2244 (662).JPG



2244 (663).JPG



2244 (664).JPG



2244 (665).JPG



2244 (666).JPG



2244 (667).JPG



2244 (668).JPG



2244 (669).JPG



2244 (670).JPG



2244 (671).JPG



2244 (672).JPG



2244 (673).JPG



2244 (674).JPG



2244 (675).JPG



2244 (676).JPG



2244 (677).JPG



2244 (678).JPG



2244 (679).JPG



2244 (680).JPG



2244 (681).JPG



2244 (682).JPG



2244 (683).JPG



2244 (684).JPG



2244 (685).JPG



2244 (686).JPG



2244 (687).JPG



2244 (688).JPG



2244 (689).JPG



2244 (690).JPG



2244 (691).JPG



2244 (692).JPG



2244 (693).JPG



2244 (694).JPG



2244 (695).JPG



2244 (696).JPG



2244 (697).JPG



2244 (698).JPG



2244 (699).JPG



2244 (700).JPG



2244 (701).JPG



2244 (702).JPG



2244 (703).JPG



2244 (704).JPG



2244 (705).JPG



2244 (706).JPG



2244 (707).JPG



2244 (708).JPG



2244 (709).JPG



2244 (710).JPG



2244 (711).JPG



2244 (712).JPG



2244 (713).JPG



2244 (714).JPG



2244 (715).JPG



2244 (716).JPG



2244 (717).JPG



2244 (718).JPG



2244 (719).JPG



2244 (720).JPG



2244 (721).JPG



2244 (722).JPG



2244 (723).JPG



2244 (724).JPG



2244 (725).JPG



2244 (726).JPG



2244 (727).JPG