

Glenside Farm Dumfries House Estate, Auchinleck *East Ayrshire*

Archaeological Evaluation

for

The Great Steward of Scotland's Dumfries House Trust

May 2017



Glenside Farm Evaluation, North Field (photo 076)

Addyman Archaeology
Archaeology Heritage Consultancy Architecture

Addyman Archaeology

The Old Printworks, 77a Brunswick Street, Edinburgh, EH7 5HS
admin@addyman-archaeology.co.uk
0131 555 4678

Glenside Farm

Dumfries House Estate, Auchinleck, East Ayrshire

Archaeological Evaluation

Job number 2244.00

May 2017

by Andrew Morrison

Contents

Illustrations

Executive Summary

1.	<i>Introduction</i>	4
	<i>i. General</i>	4
	<i>ii. Setting and Geology</i>	4
2.	<i>Archaeological Evaluation</i>	6
	<i>i. General and Methodology</i>	6
	<i>ii. Results</i>	7
	<i>a. North Field</i>	7
	<i>Trench 1</i>	8
	<i>Trench 2</i>	9
	<i>Trench 3</i>	10
	<i>Trench 4</i>	10
	<i>Trench 5</i>	11
	<i>b. East Field</i>	11
	<i>Trench 6</i>	12
	<i>Trench 7</i>	13
	<i>Trench 8</i>	13
	<i>Trench 9</i>	14
	<i>Trench 10</i>	15
	<i>Test Pits</i>	16
	<i>c. West Field</i>	17
	<i>Trench 11</i>	18
	<i>d. South Field</i>	18
	<i>Trench 12</i>	19
	<i>Trench 13</i>	20
	<i>Trench 14</i>	21
3.	<i>Overall Conclusions and Recommendations</i>	21
4.	<i>Archiving</i>	21
Appendix A	<i>Photographic Register</i>	22
Appendix B	<i>Photographic Thumbnails</i>	30

Illustrations

List of Figures

Figure 1 : Site Location	5
---------------------------------	----------

Figure 2 : Proposed Site Plan –Image copyright Dovecote Architecture and Design Ltd.	6
Figure 3 : Evaluation Trench Locations	7

List of Plates

Plate 1 : North field, Showing Trenches 1-5 (photo 075)	7
Plate 2 : Trench 1, Overall, Facing northeast (photo 011)	8
Plate 3 : Trench 1, Facing south (photo 004)	8
Plate 4 : Trench 1, Furrow detail (photo 022)	8
Plate 5 : Trench 2, Overall, Facing northwest (photo 043)	9
Plate 6 : Trench 2, Rig and Furrow (photo 070)	9
Plate 7 : Trench 2, Rig and Furrow detail (photo 045)	9
Plate 8 : Trench 3, Overall, Facing west (photo 086)	10
Plate 9 : Trench 3, Rig and Furrow (photo 084)	10
Plate 10 : Trench 3, Northwest end (photo 078)	10
Plate 11 : Trench 4, Overall, Facing NNE (photo 113)	11
Plate 12 : Trench 4, Field drain detail (photo 135)	11
Plate 13 : Trench 5, Overall, Facing WSW (photo168)	11
Plate 14 : Trench 5, Field drain detail (photo 182)	11
Plate 15 : East field, Showing Trenches 6,7,9,10 (photo 226)	12
Plate 16 : Trench 6, Overall, Facing north (photo 188)	12
Plate 17 : Trench 6, Plough scars to north (photo 197)	13
Plate 18 : Trench 6, North end detail (photo 199)	13
Plate 19 : Trench 7, Overall, Facing NE (photo 210)	13
Plate 20 : Trench 7 detail (photo 216)	13
Plate 21 : Trench 8, Showing Rig and Furrow (photo 309)	14
Plate 22 : Trench 8, Overall, Facing SSW (photo 314)	14
Plate 23 : Trench 8, Furrow detail (photo 295)	14
Plate 24 : Trench 9, overall, Facing north (photo 235)	15
Plate 25 : Trench 9, Showing plough scars (photo 237)	15
Plate 26 : Trench 9, Plough scars detail (photo 240)	15
Plate 27 : Trench 10, Overall, Facing NNE (Photo 251)	15
Plate 28 : Trench 10, Plough scars (photo 273)	16
Plate 29 : Trench 10, Plough scars detail (photo 278)	16
Plate 30 : Trench 10, Trackway (photo 255)	16
Plate 31 : Trench 10, Trackway, Post-ex (photo 327)	16
Plate 32 : Test Pit 1, Facing west (photo 186)	17
Plate 33 : Test Pit 2, Facing south (photo 234)	17
Plate 34 : West field, Showing Trench 11 and Byre to east (photo 342)	17
Plate 35 : Trench 11, Overall, Facing northwest (photo 329)	18
Plate 36 : South field, Showing Trenches 12-14 (photo 420)	18
Plate 37 : Trench 12, Overall, Facing ENE (photo 419)	19
Plate 38 : Trench 12, Rig and Furrow (photo 422)	19
Plate 39 : Trench 12, R&F detail (photo 448)	19
Plate 40 : Trench 13, Overall, Facing northeast (photo 366)	20
Plate 41 : Trench 13, Rig and Furrow (photo 379)	20
Plate 42 : Trench 13, R&F detail (photo 390)	20
Plate 43 : Trench 14, Overall, Facing northeast	21
Plate 44 : Trench 14, Facing south towards TR12/13 (photo 364)	21

Unless otherwise stated, all content is the copyright of Simpson & Brown *Architects* with Addyman Archaeology

Glenside Farm

Dumfries House Estate, Auchinleck, East Ayrshire

Archaeological Evaluation: May 2017

Executive Summary

Addyman Archaeology was commissioned by the Great Steward of Scotland's Dumfries House Trust to undertake an archaeological evaluation at Glenside Farm, part of the Dumfries House Estate, near Auchinleck, East Ayrshire. The evaluation was completed as part of the planning process prior to the refurbishment of a farmhouse, conversion of existing outbuildings, removal of redundant outbuildings, and the erection of new buildings to create a multi-purpose skills, arts, and crafts training facility with residential accommodation on the former steading site.

A total of 14 trenches and two geological test-pits were opened across the site over a period of three days, all of which showed evidence of past agricultural activity, including both Rig and Furrow and plough scars, as well as efforts to improve field drainage. No archaeological finds or further features were uncovered.

A record of the evaluation has been deposited with the Online Access to the Index of Archaeological Investigations (OASIS) website hosted by the Archaeological Data Service (OASIS ID addyman1-282392) and with Discovery and Excavation in Scotland (DES), the annual publication of fieldwork by Archaeology Scotland.

1. Introduction

i. General

Addyman Archaeology was contracted by The Great Steward of Scotland's Dumfries House Trust to undertake an archaeological evaluation at Glenside Farm (KA12 2LP), part of the Dumfries House Estate, near Auchinleck in East Ayrshire (NGR NS 53813 21631). The archaeological investigation was required as part of a planning condition by the West of Scotland Archaeology Service (WoSAS) placed upon the planning application (16/0601/PP) for the: refurbishment of a farmhouse, conversion of existing outbuildings and removal of redundant outbuildings, and the erection of buildings and associated groundworks, to create a multi-purpose skills, arts and crafts training facility incorporating residential accommodation.

WoSAS has recommended that:

'No development shall take place within the development site as outlined in red on the approved plan until the developer has secured the implementation of a programme of archaeological works in accordance with a written scheme of investigation which has been submitted by the applicant, agreed by the West of Scotland Archaeological Service, and approved by the Planning Authority. Thereafter the developer shall ensure that the programme of archaeological works is fully implemented and that all recording and recovery of archaeological resources within the development site is undertaken to the satisfaction of the Planning Authority in agreement with the West of Scotland Archaeology Service'.

A Written Scheme of Investigation (WSI) was submitted and approved by WoSAS, detailing the archaeological works to be carried out as part of the planning condition.

This Data Structure Report (DSR) represents the results of the archaeological evaluation conducted at Glenside Farm between the 15th and 17th of February 2017. Archaeological works were carried out by Andrew Morrison, assisted by Scott Coulter, under overcast, cold, and alternating sunny and rainy weather conditions. For a brief map regression and history of the development area, please refer to the separate Building Recording and Watching Brief DSR (*Addyman Archaeology, 2017*). This report is prepared in accordance with standard Addyman Archaeology procedures and in line with the guidelines established by the Chartered Institute for Archaeologists (CIfA). A record of the evaluation (OASIS ID: *addymana1-282392*) has been deposited with the Online Access to the Index of Archaeological Investigations (OASIS) website hosted by the Archaeological Data Service and with Discovery and Excavation in Scotland (DES), the annual publication of fieldwork by Archaeology Scotland.

ii. Setting and Geology

Located within the Dumfries House Estate, near Auchinleck, East Ayrshire, the development site at Glenside Farm encompasses an area of 1.99 hectares, and is roughly centred on NGR NS 53873 21616. The site is accessed from the north via Barony Road, is bound to the west by an unnamed burn, and to the north, west, and south by open, cultivated farmland. Glenside Farm consists of: a T-shaped structure encompassing a farm house, bothy, and byre, with lean-to structures at the north-west and south-west ends; four additional structures to the north; a brick pen and slurry tank; as well as associated cultivated field systems to the north, south, and east, as well as access tracks from the north, west, and east.

The underlying bedrock geology is sedimentary, of the Scottish upper coal measures formation, formed approximately 307 to 310 million years ago during the Carboniferous Period. The bedrock formed in an environment dominated by swamps, estuaries, and deltas, along coastal plains periodically inundated by the sea. The overlying superficial geology is a Devensian – Diamicton

Glacial Till, formed up to 2 million years ago in the Quaternary period during Ice Age conditions; during this period, glaciers scoured the landscape, depositing moraines of till with outwash from seasonal meltwaters depositing sand and gravel.¹

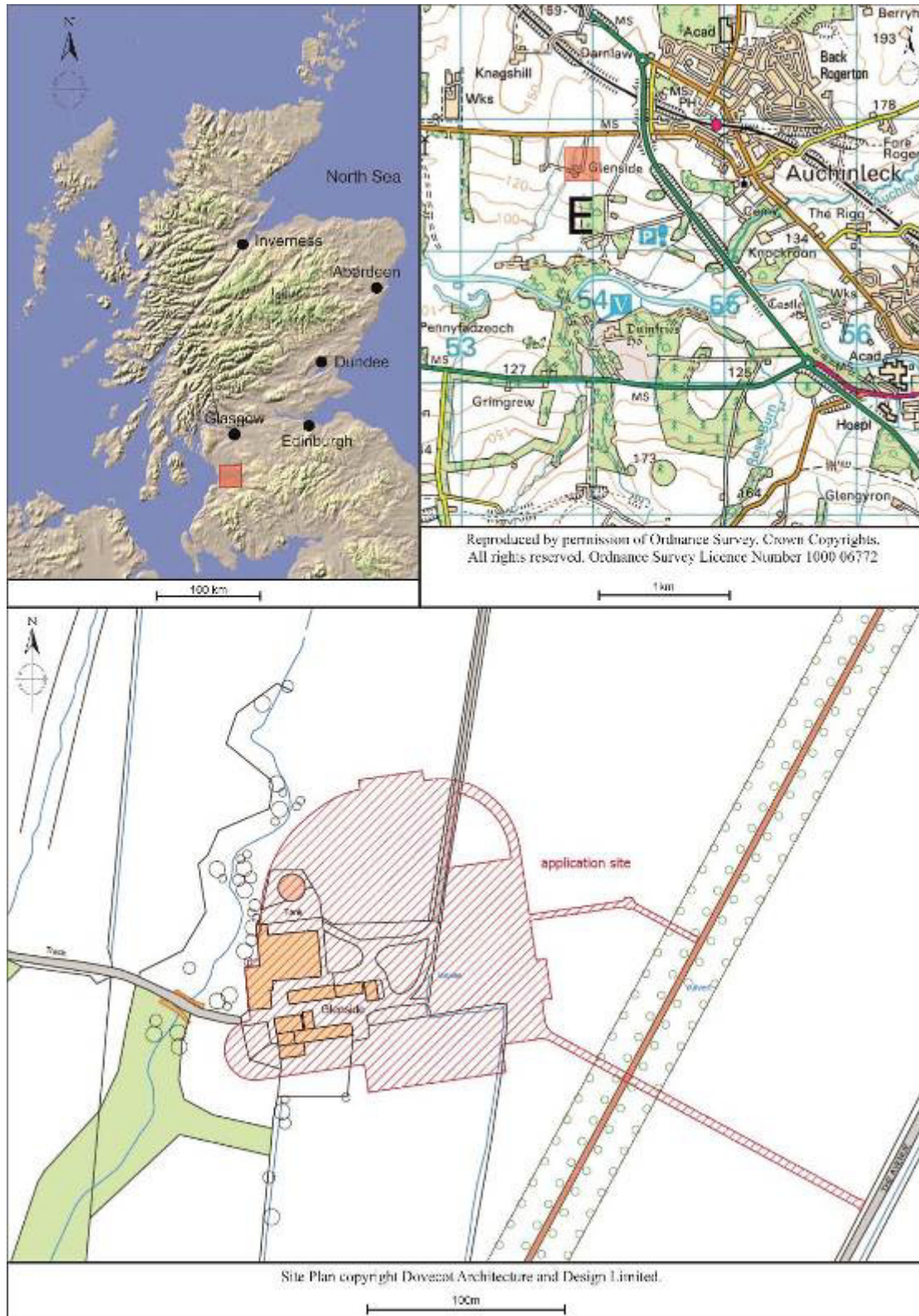


Figure 1 : Site Location

¹ Geological information taken from <http://mapapps.bgs.ac.uk/geologyofbritain/home.html> - 08/02/17



Figure 2 : Proposed Site Plan –Image copyright Dovecote Architecture and Design Ltd.

2. Archaeological Evaluation

i. General and Methodology

The purpose of an archaeological evaluation is to gain information about the archaeological potential of a site, in this case to meet the requirements placed upon the planning application 16/0601/PP. The results of this evaluation, and subsequent recommendations by Addyman Archaeology, will allow WoSAS to advise The Great Steward of Scotland's Dumfries House Trust as to whether the site should be investigated further, or whether the archaeological condition can be discharged.

An archaeological evaluation investigates only a certain percentage of the development area. For the development at Glenside Farm, WoSAS stipulated an archaeological evaluation covering 8% of the total site area, due to the survival of the surrounding fields as open farmland and lack of previous archaeological investigations in the area. The evaluation area covered approximately 11,300m².

Following on from the earlier building recording and watching brief during demolition stage of works, the archaeological evaluation took place between the 15th and the 17th of February 2017, where a total of 14 trenches were excavated, providing good spatial coverage across the site (**Figure 3**).

For the purposes of the evaluation, the site was divided into quadrants: the North Field (located north of the farmstead and east of the burn), the East Field (located east of the farmstead and access track to Barony Road), the South Field (southeast of the farmstead), and the West Field (located in the southwest corner of the site) (**Figure 3**). The evaluation was undertaken using a Caterpillar 312E tracked excavator fitted with a 2.0m wide bladed bucket (the width to which all trenches were excavated), under the direct supervision of a suitably qualified archaeologist. GPS coordinates of the trench locations were taken using a Magellan Explorist 310, with accuracy varying from 4-6 metres on the 15th and 16th of February, to 6-8 metres on the 16th and 17th.

All trenches were excavated down to the level of the natural subsoil, except in the case of the geological test-pits that were excavated down to bedrock. All archaeological features were investigated and recorded to the standards of Addyman Archaeology and the Chartered Institute for Archaeologists (CIfA).

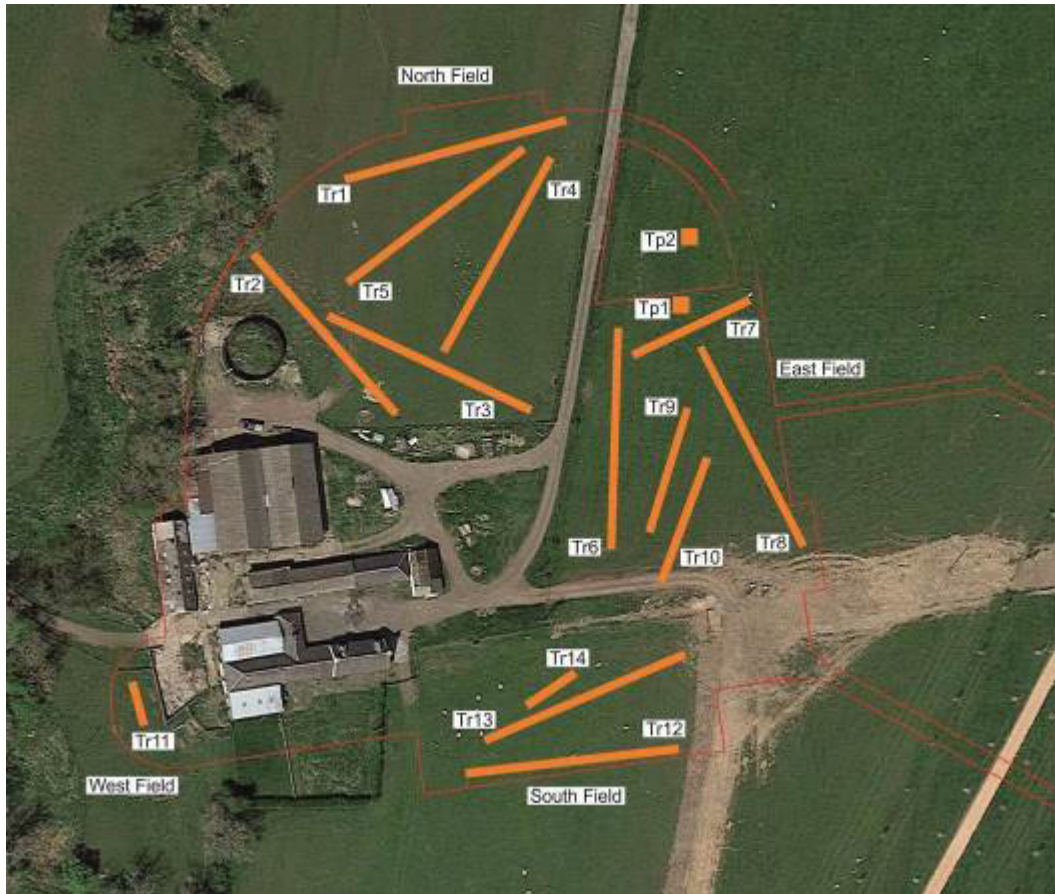


Figure 3 : Evaluation Trench Locations

ii. Results

a. North Field



Plate 1 : North field, Showing Trenches 1-5 (photo 075)

The North Field is located to the north of the Glenside Farmstead, and is bound by the access track to Barony Road to the east, the site compound to the south, the burn to the west, and open pasture to the north. Trenches 1-5 were located within this quadrant, and were excavated on the 15th of February, 2017 under clear and sunny but cold conditions, turning to rain in the afternoon. See **Figure 3** and **Plate 1** for field location and trench layout.

Trench 1



Plate 2 : Trench 1, Overall, Facing northeast (photo 011)

Trench 1 was located in the northern extent of the site boundary, and measured 50.0m in length curving slightly towards the southwest (**Plate 2**). The trench was orientated along a northeast/southwest alignment, with the northeast end centred on the National Grid Reference NS 53931 21723, and the southwest end on NS 53881 21711 at 142m elevation.

Excavations revealed a shallow topsoil/ cultivation soil measuring 0.30-0.40m in depth, overlying compact orangey-brown mottled clay natural with infrequent stone and small boulder inclusions. A widely spaced, north-south orientated Rig and Furrow was uncovered (**Plate 3**), measuring approximately 7.0m from centre of furrow to centre of furrow, as well as a number of north-south running field drains. No finds were noted within the trench.



Plate 3 : Trench 1, Facing south (photo 004)



Plate 4 : Trench 1, Furrow detail (photo 022)

Trench 2



Plate 5 : Trench 2, Overall, Facing northwest (photo 043)

Measuring 47.0m in length, Trench 2 was orientated northwest-southeast, and was located in the western corner of the field, extending from the area of the burn towards the site compound (**Plate 5**). The northwest end of the trench was centred on NGR NS 53871 21699 at 143m elevation, and the southeast end was located at NS 53891 21660 at 135m elevation.

Topsoil depth within Trench 5 varied from 0.30-0.40m, and was found to overlie grey-brown clay natural, becoming saturated towards the southeast end. North-south orientated Rig and Furrow was uncovered within the trench measuring approximately six to eight metres from centre of furrow to centre of furrow (**Plate 6**), as well as a possible pathway- a slightly stonier make-up than the furrows- as shown on the early 20th century Ordnance Survey maps, leading from the farmstead to a burn-side well to the north (**Plate 7**). A recent geological test-pit was also noted towards the southeast end of the trench. No finds were noted within the trench.



Plate 6 : Trench 2, Rig and Furrow (photo 070)



Plate 7 : Trench 2, Rig and Furrow detail (photo 045)

Trench 3



Plate 8 : Trench 3, Overall, Facing west (photo 086)



Plate 9 : Trench 3, Rig and Furrow (photo 084)



Plate 10 : Trench 3, Northwest end (photo 078)

Trench 3 was located in the southeast corner of the North Field (east of Trench 2 and south of Trench 4), and was aligned roughly WNW-ESE (**Plate 8**). Measuring 49.0m in length, the WNW end was centred on NGR NS53878 21681 at 134m elevation, and the ESE end at NS 53923 21659 at 139m elevation.

More north-south orientated Rig and Furrow measuring approximately six to eight metres furrow to furrow was uncovered within Trench 3 (**Plate 9**), as well as a number of field drains and evidence of burrowing activity. No finds were noted within the trench.

Trench 4

Trench 4 was located to the north of Trench 3, along the eastern end of the North Field (**Plate 11**). Orientated NNE-SSW, Trench 4 measured 48.3m in length, with a topsoil depth of between 0.23-0.30m. The NNE end of the trench was centred on NGR NS 53928 21714 at 147m elevation, with the SSW end at NS 53898 21671 at 141m elevation. Excavations revealed the same north-south orientated Rig and Furrow, as well as a number of north-south running field drains, some with crushed red sandstone bedrock in their fill (**Plate 12**). No finds were noted within the trench.



Plate 11 : Trench 4, Overall, Facing NNE (photo 113)



Plate 12 : Trench 4, Field drain detail (photo 135)

Trench 5



Plate 13 : Trench 5, Overall, Facing WSW (photo 168)



Plate 14 : Trench 5, Field drain detail (photo 182)

Trench 5 was located to the south of Trench 1 and the north of Trench 2, and was the final evaluation trench within the North Field, and the final trench excavated on the 15th of February. Measuring 48.5m in length, the trench was orientated along a WSW-ENE alignment (**Plate 13**), with the WSW end centred on NGR NS 53923 21717 at 144m elevation, and the ENE end at NS53880 21687 at 139m elevation.

Topsoil depth within Trench 5 ranged from 0.23m at the WSW end, to 0.31m at the ENE end, and was found to overlie a silty grey-brown clay subsoil. North-south orientated Rig and Furrow was uncovered within Trench 5, as were a number of north-south running field drains (**Plate 14**); no finds were noted within the trench.

b. East Field

The East Field is located to the east of the Glenside Farmstead, and is bound by open pasture to the east, a trackway and open pasture to the south, the access track to Barony Road to the west, and open pasture to the north. Trenches 6-10 were located within this quadrant, and were excavated on the 16th of February, 2017 under variably sunny and overcast weather conditions. See **Figure 3** and **Plate 15** for field location and trench layout.



Plate 15 : East field, Showing Trenches 6,7,9,10 (photo 226)

Trench 6

Trench 6 was located along the western edge of the East Field, and measured 48.5m in length (**Plate 16**). Orientated along a north-south alignment, the south end of Trench 6 was centred on NGR NS 53942 21625 at 139m elevation, with the north end at NS 53945 21683 at 146m elevation.

Excavations revealed a shallow topsoil, varying in depth from 0.20m in the north end, to 0.25m at the south end, overlying a mid to light brown sandy clay, with mostly small stone inclusions, though a large boulder measuring approximately 1.0m in length was removed from the subsoil. A number of north-south aligned flat-bottomed plough scars were uncovered, measuring between 0.08-0.10m in width, and lengths up to 4.0m (**Plate 17, Plate 18**). A 0.05m diameter cast iron water pipe was also found in the south end of Trench 6; no finds or additional features were noted.



Plate 16 : Trench 6, Overall, Facing north (photo 188)



Plate 17 : Trench 6, Plough scars to north (photo 197)



Plate 18 : Trench 6, North end detail (photo 199)

Trench 7



Plate 19 : Trench 7, Overall, Facing NE (photo 210)



Plate 20 : Trench 7 detail (photo 216)

Trench 7 was located east of the north end of Trench 6, and was orientated roughly northeast-southwest (**Plate 19**). Measuring 28.2m in length, the southwest end of the trench was centred on NGR NS 53951 21666 at 135m elevation, with the northeast end at NS 53976 21679 at 141m elevation.

The excavation of Trench 7 revealed a topsoil depth varying between 0.23m at the northeast end to 0.28m at the southwest end, overlying grey-brown mottled stony clay (**Plate 20**). Faint north-south orientated Rig and Furrow was uncovered towards the southwest end of the trench, with a north-south running field drain located towards the northeast. No finds were noted within the trench.

Trench 8

Trench 8 was located along the eastern edge of the East Field, south of Trench 7, and angled towards the eastern corner of the site boundary. Aligned northwest-southeast, Trench 8 measured 49.3m in length (**Plate 22**), with the northwest end centred on NGR NS 53968 21669 at 142m elevation, and the southeast end at NS 53986 21623 at 141m elevation.

Excavations revealed a topsoil depth of 0.18m in the northwest corner sloping to 0.30m in the southeast corner, and overlying mid-grey/brown silty clay subsoil. Clearly defined north-south orientated Rig and Furrow was noted within the trench (**Plate 21**), measuring roughly seven metres furrow to furrow, and filled with a charcoal rich plough soil. North-south orientated plough scars were also seen, particularly within the trench's northwest extent (**Plate 22**), and measured approximately 0.12m in width with a flat base and no cross ploughing. No finds were noted within the trench.



Plate 21 : Trench 8, Showing Rig and Furrow (photo 309)



Plate 22 : Trench 8, Overall, Facing SSW (photo 314)



Plate 23 : Trench 8, Furrow detail (photo 295)

Trench 9

Trench 9 was located centrally within the East Field, east of Trench 6, south of Trench 7, and west of Trenches 8 and 10 (**Plate 24**). Orientated roughly NNE-SSW, Trench 9 measured 28.4m in length, with the NNE end centred on NGR NS 53960 21658 at 137m elevation, and the SSW at NS 53953 21632 at 135m elevation.

Excavations revealed a topsoil depth varying between 0.22-0.24m, overlying light grey/beige stony clay subsoil containing a number of plough scars and feint cultivation furrows. The cultivation furrows were widely spaced, approximately 10m apart, and were orientated roughly east-west; these furrows were seen to be cut by the later, north-south orientated flat-bottomed, 0.12m width plough scars (**Plate 25, Plate 26**). No finds were noted within the trench.



Plate 24 : Trench 9, overall, Facing north (photo 235)



Plate 25 : Trench 9, Showing plough scars (photo 237)



Plate 26 : Trench 9, Plough scars detail (photo 240)

Trench 10



Plate 27 : Trench 10, Overall, Facing NNE (Photo 251)



Plate 28 : Trench 10, Plough scars (photo 273)



Plate 29 : Trench 10, Plough scars detail (photo 278)

Measuring 29.2m in length, Trench 10 was located west of, and roughly parallel to, Trench 8, was the southernmost reaching trench within the East Field, and was placed in order to reveal a section of the trackway leading east from Glenside Farm (*Plate 27*). Orientated NNE-SSW, the SSW end of the trench was centred on NGR NS 53955 21614 at 135m elevation, with the NNE end at 53967 21641 at 140m elevation.

The topsoil within Trench 10 measured 0.22m at the NNE end, sloping down to 0.25m at the SSW end, and was found to overlie greyish-beige stony clay subsoil, turning to a more damp-silty clay downslope (*Plate 28*). Excavations uncovered a number of plough scars in the north end of the trench indicating cross-ploughing (*Plate 29*), as well as a number of field drains and possible east-west orientated cultivation furrow. A small slot was excavated in the east-west trackway at the southern extent of the trench, revealing a possibly multi-phased, hard-packed stone cobble make-up with indications of metalling (*Plate 31*). No finds were noted within Trench 10.



Plate 30 : Trench 10, Trackway (photo 255)



Plate 31 : Trench 10, Trackway, Post-ex (photo 327)

Test Pits

Two geological test-pits were excavated to the north of Trench 7, both of which were archaeologically monitored. The test-pits measured roughly 4.0 long by 2.0m in width, and were excavated down to bedrock. Test-pit 1, immediately north of Trench 7, was centred on NGR NS 53963 21697 at 155m elevation. Excavation of TP1 revealed a topsoil depth of approximately 0.20m, overlying light brown/grey silty clay atop a reddish boulder clay, over a red sandstone bedrock, located roughly 0.9-1.0m below the surface (*Plate 32*). Test-pit 2, located outwith the site boundary, was centred on NS 53924 21716 at 145m elevation, and showed similar depth and stratigraphy to TP1 (*Plate 33*). No archaeological finds or features were noted.



Plate 32 : Test Pit 1, Facing west (photo 186)



Plate 33 : Test Pit 2, Facing south (photo 234)

c. West Field



Plate 34 : West field, Showing Trench 11 and Byre to east (photo 342)

The West Field is located to the immediate west of the Glenside Farmstead, and is bound by the unnamed burn to the west, open pasture to the south, and a trackway and courtyard area to the north. Trench 11 was located within this quadrant, and was excavated on the 17th of February, 2017 under variably sunny and overcast weather conditions. See **Figure 3** and **Plate 34** for field location and trench layout. The West Field had been identified during the previous building recording exercise as an area where the survival of archaeological remains was thought likely, and in need of further investigation. A small 10m long trench was excavated, the length and placement of which was dictated by the overhead powerlines, proximity of the site boundary, and size of the machine.

Trench 11



Plate 35 : Trench 11, Overall, Facing northwest (photo 329)

Trench 11 (*Plate 35*) was orientated northwest-southeast, and measured 10.0m in length. Topsoil depth varied between 0.20-0.30m, and was found to overlie a light brown- orangey red sandy clay, with soil deposits thinning at the downwards slope toward the burn. The northwest end of the trench was centred on NGR NS 53833 21594 at 137m elevation, with the southeast end at NS 53836 21581, also at 137m elevation. Excavations revealed frequent stone and terracotta fragments within the topsoil, and a series of three field drains, with no evidence of cultivation present. All features indicate efforts to improve drainage in this part of the field. No finds were noted within the trench.

d. South Field



Plate 36 : South field, Showing Trenches 12-14 (photo 420)

The South Field is located to the south of the Glenside Farmstead, and is bound by open pasture to south and east, Glenside Farm to the west, and a trackway and East Field to the north. Trenches 12-14 were located within this quadrant, and were excavated on the 17th of February, 2017 under variably sunny and overcast conditions. See **Figure 3** and **Plate 36** for field location and trench layout.

Trench 12



Plate 37 : Trench 12, Overall, Facing ENE (photo 419)



Plate 38 : Trench 12, Rig and Furrow (photo 422)



Plate 39 : Trench 12, R&F detail (photo 448)

Trench 12 was located to the south of Trench 13, along the southern edge of the site boundary, and measured 47.0m in length (**Plate 37**). Orientated WSW-ENE, the WSW end of the trench was centred on NGR NS 53916 21575 at 137m elevation, with the ENE end at NS 53963 21579 at 136m elevation. Topsoil depth measured an average of 0.22m, and was found to overly light-brown/ orange sandy clay natural. Excavations revealed north-south orientated Rig and Furrow, measuring approximately 6-7m furrow to furrow (**Plate 38**, **Plate 39**), as well as a number of north-south running field drains. No finds were noted within the trench.

Trench 13



Plate 40 : Trench 13, Overall, Facing northeast (photo 366)

Trench 13 was located north of Trench 12, south of Trench 14, and measured 47.5m in length (**Plate 40**). Orientated along a northeast-southwest alignment, the southwest end of the trench was centred on NGR NS 53918 21575 at 138m elevation, and the northeast end at NS 53961 21601 at 135m elevation.

Topsoil depth measured 0.20m depth to the northeast, sloping to 0.22m to the southwest, and was found to overlie light orangey-brown/ grey sandy, stony clay. Clearly defined north-south orientated Rig and Furrow was noted, measuring approximately 6-7m furrow to furrow (**Plate 41**, **Plate 42**), matching with those seen in Trench 12, and later, Trench 14. A number of faint north-south orientated plough scars were also recorded towards the northeast end of the trench, as were a series of four to five north-south running field drains spaced along the length of the trench. No finds were noted within the trench.



Plate 41 : Trench 13, Rig and Furrow (photo 379)



Plate 42 : Trench 13, R&F detail (photo 390)

Trench 14



Plate 43 : Trench 14, Overall, Facing northeast
(photo 343)



Plate 44 : Trench 14, Facing south towards TR12/13
(photo 364)

Trench 14 was located north of Trench 13, and was orientated roughly northeast-southwest (**Plate 43**). Measuring 13.0m in length, the southwest end of the trench was centred on NGR NS 53924 21589 at 138m elevation, with the northeast end at NS 53934 21599 at 136m elevation.

The excavation of Trench 14 revealed a topsoil depth of 0.22m overlying orangey grey-brown mottled stony clay (**Plate 44**). The same north-south orientated Rig and Furrow as was seen in Trenches 12 and 13 was uncovered, measuring roughly 6m furrow to furrow, with a north-south running field drain, with a cut of 0.30m, located towards the northeast. No finds were noted within the trench.

3. Overall Conclusions and Recommendations

The archaeological evaluation uncovered evidence for multiple phases of cultivation, including Rig and Furrow and plough scars, as well as efforts to improve drainage, within all of the trenches excavated. No artefacts or further archaeological features were located during this phase of works; however the possibility exists for isolated subsurface archaeological deposits to survive outwith the area of the evaluation trenches.

It is possible that the stripping of larger open areas of the site (site compound, etc.), may require further monitoring; any decisions regarding further work required will be decided by WoSAS.

4. Archiving

Both a hard copy and a digital copy of this report in its final form will be submitted to the National Record of the Historic Environment (NRHE) as held by Historic Environment Scotland. This will be accompanied by the project archive including selected email correspondence, site records, and digital copies of all site photographs.

A copy of this report will also be submitted to the West of Scotland Archaeology Service (WoSAS) for inclusion on their Historic Environment Record.

An entry has been created on the online OASIS platform to ensure public access to the research and an entry will be submitted to *Discovery and Excavation in Scotland*, the annual journal produced by Archaeology Scotland charting fieldwork across Scotland.

Appendix A Photographic Register

Image No.	Frame	Direction Facing	Date	Description	Taken By
001	4696	SW	15/02/2017	TR1, Post-ex, NE end, Towards SW	AJLM
002	4697	SW	15/02/2017	TR1, Post-ex, NE end, General shot	AJLM
003	4698	SW	15/02/2017	TR1, Post-ex, NE end, Continuing to SW end ->	AJLM
004	4699	SW	15/02/2017	TR1, Post-ex, Continuing to SW end ->	AJLM
005	4700	SW	15/02/2017	TR1, Post-ex, Continuing to SW end ->	AJLM
006	4701	SW	15/02/2017	TR1, Post-ex, Continuing to SW end ->	AJLM
007	4702	SW	15/02/2017	TR1, Post-ex, Continuing to SW end ->	AJLM
008	4703	V/S	15/02/2017	TR1, Post-ex, Showing scales	AJLM
009	4704	SW	15/02/2017	TR1, Post-ex, Towards SW end	AJLM
010	4705	SW	15/02/2017	TR1, Post-ex, Towards SW end	AJLM
011	4706	NE	15/02/2017	TR1, Post-ex, SW end towards NE	AJLM
012	4707	E	15/02/2017	N field, General shot, TR1 towards TR4	AJLM
013	4708	E	15/02/2017	N field, General shot, TR1 towards TR4	AJLM
014	4709	NE	15/02/2017	TR1, Post-ex, SW end, Overall	AJLM
015	4710	NE	15/02/2017	TR1, Post-ex, Rig and Furrow 1A	AJLM
016	4711	W	15/02/2017	TR1, Post-ex, Rig and Furrow 1A	AJLM
017	4712	SE	15/02/2017	TR1, Post-ex, Trench section, NW facing	AJLM
018	4713	NE	15/02/2017	TR1, Post-ex, Trench section, Wide shot	AJLM
019	4714	NE	15/02/2017	TR1, Post-ex, Rig and Furrow 1B	AJLM
020	4715	W	15/02/2017	TR1, Post-ex, Rig and Furrow 1B	AJLM
021	4716	NE	15/02/2017	TR1, Post-ex, R+F 1C	AJLM
022	4717	W	15/02/2017	TR1, Post-ex, R+F 1C	AJLM
023	4718	NE	15/02/2017	TR1, Post-ex, R+F 1D w/ Drain? East/West	AJLM
024	4719	NE	15/02/2017	TR1, Post-ex, R+F 1D w/ Drain? East/West	AJLM
025	4720	W	15/02/2017	TR1, Post-ex, R+F 1D w/ Drain? East/West	AJLM
026	4721	NE	15/02/2017	TR1, Post-ex, R+F 1E	AJLM
027	4722	W	15/02/2017	TR1, Post-ex, R+F 1E	AJLM
028	4723	SE	15/02/2017	TR2, Post-ex, NW end, Towards SE	AJLM
029	4724	SW	15/02/2017	TR2, Post-ex, NW end	AJLM
030	4725	S	15/02/2017	TR2, Post-ex, NW end, Overall	AJLM
031	4726	SW	15/02/2017	TR2, Post-ex, NW end, Continuing to SE	AJLM
032	4727	S	15/02/2017	TR2, Post-ex, NW end, Continuing to SE	AJLM
033	4728	SW	15/02/2017	TR2, Post-ex, Continuing to SE	AJLM
034	4729	S	15/02/2017	TR2, Post-ex, Continuing to SE	AJLM
035	4730	SW	15/02/2017	TR2, Post-ex, Continuing to SE, At TR3	AJLM
036	4731	S	15/02/2017	TR2, Post-ex, Continuing to SE, At TR3	AJLM
037	4732	SW	15/02/2017	TR2, Post-ex, Continuing to SE, At scales	AJLM
038	4733	S	15/02/2017	TR2, Post-ex, Continuing to SE	AJLM
039	4734	SW	15/02/2017	TR2, Post-ex, Continuing to SE end	AJLM
040	4735	S	15/02/2017	TR2, Post-ex, Continuing to SE end	AJLM
041	4736	SW	15/02/2017	TR2, Post-ex, SE end	AJLM
042	4737	S	15/02/2017	TR2, Post-ex, SE end	AJLM
043	4738	NW	15/02/2017	TR2, Post-ex, SE end, Towards NW	AJLM
044	4739	N	15/02/2017	TR2, Post-ex, SW facing section at TR3	AJLM
045	4740	NW	15/02/2017	TR2, Post-ex, SW facing section at TR3	AJLM
046	4741	NE	15/02/2017	TR2, Post-ex, Feature 2A	AJLM
047	4742	E	15/02/2017	TR2, Post-ex, Feature 2A	AJLM
048	4743	N	15/02/2017	TR2, Post-ex, Feature 2B	AJLM
049	4744	NE	15/02/2017	TR2, Post-ex, Feature 2B	AJLM
050	4745	NE	15/02/2017	TR2, Post-ex, Feature 2C, W edge	AJLM
051	4746	E	15/02/2017	TR2, Post-ex, Feature 2C, Towards E edge	AJLM
052	4747	N	15/02/2017	TR2, Post-ex, Feature 2C, E edge	AJLM
053	4748	NE	15/02/2017	TR2, Post-ex, Feature 2C, E edge	AJLM
054	4749	N	15/02/2017	TR2, Post-ex, Feature 2D, W edge	AJLM
055	4750	NE	15/02/2017	TR2, Post-ex, Feature 2D, W edge	AJLM
056	4751	E	15/02/2017	TR2, Post-ex, Feature 2D, E edge	AJLM
057	4752	N	15/02/2017	TR2, Post-ex, Feature 2E	AJLM
058	4753	N	15/02/2017	TR2, Post-ex, Feature 2F, W edge	AJLM
059	4754	NE	15/02/2017	TR2, Post-ex, Feature 2F, E edge	AJLM

Image No.	Frame	Direction Facing	Date	Description	Taken By
060	4755	E	15/02/2017	TR2, Post-ex, Feature 2F, E edge	AJLM
061	4756	N	15/02/2017	TR2, Post-ex, Feature 2F	AJLM
062	4757	N	15/02/2017	TR2, Post-ex, Features 2E/ 2F	AJLM
063	4758	N	15/02/2017	TR2, Post-ex, Feature 2F	AJLM
064	4759	E	15/02/2017	TR2, Post-ex, Feature 2F	AJLM
065	4760	N	15/02/2017	TR2, Post-ex, Features 2F/ 2G	AJLM
066	4761	N	15/02/2017	TR2, Post-ex, Features 2F/ 2G	AJLM
067	4762	NE	15/02/2017	TR2, Post-ex, Feature 2G, W edge	AJLM
068	4763	NE	15/02/2017	TR2, Post-ex, Feature 2G, E edge	AJLM
069	4764	E	15/02/2017	TR2, Post-ex, Feature 2G towards Test Pit	AJLM
070	4765	N	15/02/2017	TR2, Post-ex, Feature 2G	AJLM
071	4766	NE	15/02/2017	TR2, Post-ex, Test Pit	AJLM
072	4767	E	15/02/2017	TR2, Post-ex, Test Pit	AJLM
073	4768	N	15/02/2017	North Field, Working shot, W half	AJLM
074	4769	NE	15/02/2017	North Field, Working shot, E half	AJLM
075	4770	N	15/02/2017	North Field, Working shot, Central	AJLM
076	4771	N	15/02/2017	North Field, Working shot, W half	AJLM
077	4772	ESE	15/02/2017	TR3, Post-ex, WNW end, Overall	AJLM
078	4773	V/N	15/02/2017	TR3, Post-ex, WNW end	AJLM
079	4774	V/N	15/02/2017	TR3, Post-ex, WNW end, Towards ESE ->	AJLM
080	4775	E	15/02/2017	TR3, Post-ex, Towards ESE ->	AJLM
081	4776	E	15/02/2017	TR3, Post-ex, Towards ESE ->	AJLM
082	4777	E	15/02/2017	TR3, Post-ex, At scales and TR4	AJLM
083	4778	E	15/02/2017	TR3, Post-ex, Towards ESE end	AJLM
084	4779	E	15/02/2017	TR3, Post-ex, Towards ESE end	AJLM
085	4780	E	15/02/2017	TR3, Post-ex, Towards ESE end	AJLM
086	4781	WNW	15/02/2017	TR3, Post-ex, ESE end, Towards WNW	AJLM
087	4782	NNE	15/02/2017	TR3, Post-ex, Feature 3A, W edge	AJLM
088	4783	NE	15/02/2017	TR3, Post-ex, Feature 3A, E edge	AJLM
089	4785	N	15/02/2017	TR3, Post-ex, Feature 3B	AJLM
090	4786	NNE	15/02/2017	TR3, Post-ex, Features 3B and 3D	AJLM
091	4787	NE	15/02/2017	TR3, Post-ex, Features 3B, 3C and 3D	AJLM
092	4788	N	15/02/2017	TR3, Post-ex, Feature 3E	AJLM
093	4789	N	15/02/2017	TR3, Post-ex, Feature 3E	AJLM
094	4790	NNE	15/02/2017	TR3, Post-ex, Feature 3E	AJLM
095	4791	NE	15/02/2017	TR3, Post-ex, Feature 3E, Towards 3F	AJLM
096	4792	N	15/02/2017	TR3, Post-ex, Feature 3F	AJLM
097	4793	NNE	15/02/2017	TR3, Post-ex, Feature 3F	AJLM
098	4794	NNE	15/02/2017	TR3, Post-ex, At TR4	AJLM
099	4795	NE	15/02/2017	TR3, Post-ex, At TR4	AJLM
100	4796	NNE	15/02/2017	TR3, Post-ex, Feature 3G	AJLM
101	4797	E	15/02/2017	TR3, Post-ex, Features 3G and 3H	AJLM
102	4798	NNE	15/02/2017	TR3, Post-ex, Feature 3H	AJLM
103	4799	NE	15/02/2017	TR3, Post-ex, Feature 3H	AJLM
104	4800	E	15/02/2017	TR3, Post-ex, Features 3H and 3I	AJLM
105	4801	NE	15/02/2017	TR3, Post-ex, Features 3I and 3J	AJLM
106	4802	NNE	15/02/2017	TR3, Post-ex, Feature 3J	AJLM
107	4803	E	15/02/2017	TR3, Post-ex, Features 3J and 3K	AJLM
108	4804	N	15/02/2017	TR3, Post-ex, Features 3J, 3K, and 3L	AJLM
109	4805	N	15/02/2017	TR3, Post-ex, Features 3K and 3L	AJLM
110	4806	E	15/02/2017	TR3, Post-ex, Feature 3L	AJLM
111	4807	E	15/02/2017	TR3, Post-ex, Feature 3L	AJLM
112	4808	NE	15/02/2017	TR4, Post-ex, SW end, Overall	AJLM
113	4809	NE	15/02/2017	TR4, Post-ex, SW end, Overall	AJLM
114	4810	NW	15/02/2017	TR4, Post-ex, Feature 4A, SW corner, Towards NE end ->	AJLM
115	4811	NW	15/02/2017	TR4, Post-ex, Towards NE end ->	AJLM
116	4812	NW	15/02/2017	TR4, Post-ex, Towards NE end ->	AJLM
117	4813	NW	15/02/2017	TR4, Post-ex, Towards NE end ->	AJLM
118	4814	NW	15/02/2017	TR4, Post-ex, Towards NE end ->	AJLM
119	4815	NW	15/02/2017	TR4, Post-ex, Towards NE end ->, at scales	AJLM
120	4816	NW	15/02/2017	TR4, Post-ex, Towards NE end ->	AJLM
121	4817	NW	15/02/2017	TR4, Post-ex, Towards NE end ->	AJLM
122	4818	NW	15/02/2017	TR4, Post-ex, Towards NE end ->	AJLM

Image No.	Frame	Direction Facing	Date	Description	Taken By
123	4819	NW	15/02/2017	TR4, Post-ex, Towards NE end ->	AJLM
124	4820	NW	15/02/2017	TR4, Post-ex, Towards NE end ->	AJLM
125	4821	NW	15/02/2017	TR4, Post-ex, Towards NE end ->	AJLM
126	4822	NW	15/02/2017	TR4, Post-ex, Towards NE end ->	AJLM
127	4823	NW	15/02/2017	TR4, Post-ex, Towards NE end ->	AJLM
128	4824	NW	15/02/2017	TR4, Post-ex, Towards NE end ->	AJLM
129	4825	NW	15/02/2017	TR4, Post-ex, Towards NE end ->	AJLM
130	4826	NW	15/02/2017	TR4, Post-ex, Towards NE end ->	AJLM
131	4827	NW	15/02/2017	TR4, Post-ex, Towards NE end ->	AJLM
132	4828	NW	15/02/2017	TR4, Post-ex, Towards NE end ->	AJLM
133	4829	NW	15/02/2017	TR4, Post-ex, NE end	AJLM
134	4830	NE	15/02/2017	TR4, Post-ex, Feature 4B	AJLM
135	4831	NE	15/02/2017	TR4, Post-ex, Feature 4E	AJLM
136	4832	V/NE	15/02/2017	TR4, Post-ex, Feature 4F	AJLM
137	4833	NE	15/02/2017	TR5, Post-ex, SW end, Overall	AJLM
138	4834	NE	15/02/2017	TR5, Post-ex, SW end, Overall	AJLM
139	4835	NW	15/02/2017	TR5, Post-ex, SW end, Towards NE end ->	AJLM
140	4836	NW	15/02/2017	TR5, Post-ex, Towards NE end ->	AJLM
141	4837	NW	15/02/2017	TR5, Post-ex, Towards NE end ->	AJLM
142	4838	NW	15/02/2017	TR5, Post-ex, Towards NE end ->	AJLM
143	4839	NW	15/02/2017	TR5, Post-ex, Towards NE end ->	AJLM
144	4840	NW	15/02/2017	TR5, Post-ex, Towards NE end ->	AJLM
145	4841	NW	15/02/2017	TR5, Post-ex, Towards NE end ->	AJLM
146	4842	NW	15/02/2017	TR5, Post-ex, Towards NE end ->	AJLM
147	4843	NW	15/02/2017	TR5, Post-ex, Towards NE end ->	AJLM
148	4844	NW	15/02/2017	TR5, Post-ex, Towards NE end ->	AJLM
149	4845	NW	15/02/2017	TR5, Post-ex, Towards NE end ->	AJLM
150	4846	NW	15/02/2017	TR5, Post-ex, Towards NE end ->	AJLM
151	4847	NW	15/02/2017	TR5, Post-ex, Towards NE end ->	AJLM
152	4848	NW	15/02/2017	TR5, Post-ex, Towards NE end ->	AJLM
153	4849	NW	15/02/2017	TR5, Post-ex, Towards NE end ->, at scales	AJLM
154	4850	NW	15/02/2017	TR5, Post-ex, Towards NE end ->	AJLM
155	4851	NW	15/02/2017	TR5, Post-ex, Towards NE end ->	AJLM
156	4852	NW	15/02/2017	TR5, Post-ex, Towards NE end ->	AJLM
157	4853	NW	15/02/2017	TR5, Post-ex, Towards NE end ->	AJLM
158	4854	NW	15/02/2017	TR5, Post-ex, Towards NE end ->	AJLM
159	4855	NW	15/02/2017	TR5, Post-ex, Towards NE end ->	AJLM
160	4856	NW	15/02/2017	TR5, Post-ex, Towards NE end ->	AJLM
161	4857	NW	15/02/2017	TR5, Post-ex, Towards NE end ->	AJLM
162	4858	NW	15/02/2017	TR5, Post-ex, Towards NE end ->	AJLM
163	4859	NW	15/02/2017	TR5, Post-ex, Towards NE end ->	AJLM
164	4860	NW	15/02/2017	TR5, Post-ex, Towards NE end ->	AJLM
165	4861	NW	15/02/2017	TR5, Post-ex, Towards NE end ->	AJLM
166	4862	NW	15/02/2017	TR5, Post-ex, Towards NE end ->	AJLM
167	4863	NW	15/02/2017	TR5, Post-ex, NE end	AJLM
168	4864	SW	15/02/2017	TR5, Post-ex, NE end, Overall	AJLM
169	4865	NW	15/02/2017	TR5, Post-ex, SW end, Feature 5A	AJLM
170	4866	NW	15/02/2017	TR5, Post-ex, SW end	AJLM
171	4867	NW	15/02/2017	TR5, Post-ex, SW end	AJLM
172	4868	N	15/02/2017	TR5, Post-ex, Feature 5B	AJLM
173	4869	NW	15/02/2017	TR5, Post-ex, Feature 5C	AJLM
174	4870	W	15/02/2017	TR5, Post-ex, Feature 5C and Bore Hole	AJLM
175	4871	NW	15/02/2017	TR5, Post-ex, Bore Hole	AJLM
176	4872	NW	15/02/2017	TR5, Post-ex, Features 5D and 5E	AJLM
177	4873	NW	15/02/2017	TR5, Post-ex, Feature 5E	AJLM
178	4874	N	15/02/2017	TR5, Post-ex, Feature 5E towards 5F	AJLM
179	4875	NW	15/02/2017	TR5, Post-ex, Feature 5F	AJLM
180	4876	N	15/02/2017	TR5, Post-ex, Feature 5F	AJLM
181	4877	W	15/02/2017	TR5, Post-ex, Feature 5I	AJLM
182	4878	NW	15/02/2017	TR5, Post-ex, Features 5I and 5J	AJLM
183	4879	N	15/02/2017	TR5, Post-ex, Feature 5J	AJLM
184	4880	W	16/02/2017	Test-Pit 1, East Field, Mid-ex	AJLM
185	4881	W	16/02/2017	Test-Pit 1, Location, N of TR7	AJLM

Image No.	Frame	Direction Facing	Date	Description	Taken By
186	4882	W	16/02/2017	Test-Pit 1, Post-ex, Bedrock @ <1.0m	AJLM
187	4883	W	16/02/2017	Test-Pit 1, Post-ex, Section	AJLM
188	4884	N	16/02/2017	TR6, Post-ex, Overall, S end	AJLM
189	4885	V/E	16/02/2017	TR6, Post-ex, S end, Water pipe	AJLM
190	4886	NE	16/02/2017	TR6, Post-ex, S end, Towards cultivation marks	AJLM
191	4887	NE	16/02/2017	TR6, Post-ex, Showing cultivation marks	AJLM
192	4888	NE	16/02/2017	TR6, Post-ex, Towards N end ->	AJLM
193	4889	NE	16/02/2017	TR6, Post-ex, Towards N end -> Towards scales	AJLM
194	4890	NE	16/02/2017	TR6, Post-ex, Towards N end ->	AJLM
195	4891	NE	16/02/2017	TR6, Post-ex, Towards N end ->	AJLM
196	4892	NE	16/02/2017	TR6, Post-ex, Cultivation marks	AJLM
197	4893	NE	16/02/2017	TR6, Post-ex, Cultivation marks, Towards N end	AJLM
198	4894	NE	16/02/2017	TR6, Post-ex, Cultivation marks, Towards N end	AJLM
199	4895	NE	16/02/2017	TR6, Post-ex, Cultivation marks, Towards N end	AJLM
200	4896	NE	16/02/2017	TR6, Post-ex, Cultivation marks, Towards N end	AJLM
201	4897	S	16/02/2017	TR6, Post-ex, N end, Overall	AJLM
202	4898	NW	16/02/2017	TR6, Post-ex, N end, Showing cultivation	AJLM
203	4899	NNW	16/02/2017	TR6, Post-ex, N end, Showing cultivation	AJLM
204	4900	W	16/02/2017	TR6, Post-ex, N end, Showing cultivation	AJLM
205	4901	V/S	16/02/2017	TR6, Post-ex, S end, Water pipe	AJLM
206	4902	V/S	16/02/2017	TR6, Post-ex, S end, Water pipe	AJLM
207	4903	W	16/02/2017	TR6, Post-ex, E facing section	AJLM
208	4904	NW	16/02/2017	TR6, Post-ex, E facing section	AJLM
209	4905	W	16/02/2017	TR6, Post-ex, Boulder from natural	AJLM
210	4906	NE	16/02/2017	TR7, Post-ex, SW end, Overall	AJLM
211	4907	N	16/02/2017	TR7, Relationship with TP1, TP2	AJLM
212	4908	NW	16/02/2017	TR7, Relationship with TR6	AJLM
213	4909	N	16/02/2017	TR7, Post-ex, SW end, Overall	AJLM
214	4910	N	16/02/2017	TR7, Post-ex, At scales	AJLM
215	4911	N	16/02/2017	TR7, Post-ex, At scales, Towards NE end	AJLM
216	4912	W	16/02/2017	TR7, Post-ex, NE end, Towards SW	AJLM
217	4913	W	16/02/2017	TR7, Post-ex, NE end	AJLM
218	4914	SW	16/02/2017	TR7, Post-ex, NE end, Overall	AJLM
219	4915	NE	16/02/2017	TR7, Post-ex, NW facing section	AJLM
220	4916	SE	16/02/2017	TR7, Post-ex, NW facing section	AJLM
221	4917	SE	16/02/2017	TR7, Post-ex, NW facing section	AJLM
222	4918	N	16/02/2017	East Field, 360 view, TP1 towards TP2	AJLM
223	4919	NE	16/02/2017	East Field, 360 view, TP1 and TR7	AJLM
224	4920	NE	16/02/2017	East Field, 360 view, TR7 and TR8	AJLM
225	4921	SE	16/02/2017	East Field, 360 view, TR8, TR9, and TR10	AJLM
226	4922	S	16/02/2017	East Field, 360 view, TR6, TR7, TR9, and TR10	AJLM
227	4923	SW	16/02/2017	East Field, 360 view, TR6 and TR7	AJLM
228	4924	W	16/02/2017	East Field, 360 view, TR6 and TR7	AJLM
229	4925	NW	16/02/2017	East Field, 360 view, Towards North Field	AJLM
230	4926	N	16/02/2017	East Field, 360 view, TP1 and TP2	AJLM
231	4927	E	16/02/2017	TP2, W facing section, Showing bedrock	AJLM
232	4928	W	16/02/2017	TP2, E facing section, Showing bedrock	AJLM
233	4929	W	16/02/2017	TP2, Overall	AJLM
234	4930	SW	16/02/2017	TP2, Overall, Towards TP1	AJLM
235	4931	NNE	16/02/2017	TR9, Post-ex, SSW end	AJLM
236	4932	W	16/02/2017	TR9, Post-ex, S end	AJLM
237	4933	NW	16/02/2017	TR9, Post-ex, Towards N end	AJLM
238	4934	W	16/02/2017	TR9, Post-ex, Towards N end	AJLM
239	4935	NW	16/02/2017	TR9, Post-ex, Cultivation marks	AJLM
240	4936	W	16/02/2017	TR9, Post-ex, Cultivation marks	AJLM
241	4937	NW	16/02/2017	TR9, Post-ex, Cultivation marks, At scales	AJLM
242	4938	SW	16/02/2017	TR9, Post-ex, Cultivation marks, At scales	AJLM
243	4939	W	16/02/2017	TR9, Post-ex, Scales	AJLM
244	4940	W	16/02/2017	TR9, Post-ex, Cultivation to N	AJLM
245	4941	SW	16/02/2017	TR9, Post-ex, Back towards scales	AJLM
246	4942	SW	16/02/2017	TR9, Post-ex, Back towards scales, From N	AJLM
247	4943	W	16/02/2017	TR9, Post-ex, Towards N end	AJLM
248	4944	W	16/02/2017	TR9, Post-ex, N end of trench	AJLM

Image No.	Frame	Direction Facing	Date	Description	Taken By
249	4945	SW	16/02/2017	TR9, Post-ex, N end, Back towards scales	AJLM
250	4946	SSW	16/02/2017	TR9, Post-ex, Overall	AJLM
251	4947	NE	16/02/2017	TR10, Post-ex, Overall	AJLM
252	4948	W	16/02/2017	TR10, Post-ex, SW end of trench	AJLM
253	4949	NW	16/02/2017	TR10, Post-ex, SW end of trench	AJLM
254	4950	N	16/02/2017	TR10, Post-ex, Towards scales	AJLM
255	4951	SW	16/02/2017	TR10, Post-ex, SW end, Showing track	AJLM
256	4952	W	16/02/2017	TR10, Post-ex, At field drain, S end	AJLM
257	4953	N	16/02/2017	TR10, Post-ex, Towards S end, TR9	AJLM
258	4954	W	16/02/2017	TR10, Post-ex, Mid trench, S of scales	AJLM
259	4955	N	16/02/2017	TR10, Post-ex, Towards scales	AJLM
260	4956	W	16/02/2017	TR10, Post-ex, S of scales	AJLM
261	4957	NW	16/02/2017	TR10, Post-ex, Towards scales	AJLM
262	4958	SW	16/02/2017	TR10, Post-ex, Back towards track	AJLM
263	4959	W	16/02/2017	TR10, Post-ex, At scales	AJLM
264	4960	W	16/02/2017	TR10, Post-ex, At scales	AJLM
265	4961	NW	16/02/2017	TR10, Post-ex, At scales	AJLM
266	4962	W	16/02/2017	TR10, Post-ex, At scales	AJLM
267	4963	NW	16/02/2017	TR10, Post-ex, N of scales	AJLM
268	4964	SW	16/02/2017	TR10, Post-ex, Back towards scales	AJLM
269	4965	NW	16/02/2017	TR10, Post-ex, At drain, N end of trench	AJLM
270	4966	SW	16/02/2017	TR10, Post-ex, N end, Back to SW	AJLM
271	4967	NW	16/02/2017	TR10, Post-ex, Cultivation, N end	AJLM
272	4968	N	16/02/2017	TR10, Post-ex, Cultivation, N end	AJLM
273	4969	SW	16/02/2017	TR10, Post-ex, N end, Overall	AJLM
274	4970	W	16/02/2017	TR10, Post-ex, Cultivation, N end	AJLM
275	4971	SW	16/02/2017	TR10, Post-ex, Overall	AJLM
276	4972	N	16/02/2017	TR10, Post-ex, SE facing section	AJLM
277	4973	NW	16/02/2017	TR10, Post-ex, SE facing section	AJLM
278	4974	NW	16/02/2017	TR10, Post-ex, N end, Cultivation	AJLM
279	4975	N	16/02/2017	TR10, Post-ex, N end, Cultivation	AJLM
280	4976	W	16/02/2017	TR10, Post-ex, N end, Cultivation	AJLM
281	4977	SW	16/02/2017	TR10, Post-ex, Track, Metalled	AJLM
282	4978	SW	16/02/2017	TR10, Post-ex, Track, Wider shot	AJLM
283	4979	S	16/02/2017	TR10, Post-ex, Track, Wider shot	AJLM
284	4980	NE	16/02/2017	TR10, Post-ex, Track, Wider shot	AJLM
285	4981	E	16/02/2017	TR10, Post-ex, Track, Wider shot	AJLM
286	4982	E	16/02/2017	TR10, Post-ex, Track, Detail	AJLM
287	4983	NW	16/02/2017	TR8, Post-ex, SE end, Overall	AJLM
288	4984	SW	16/02/2017	TR8, Post-ex, SE end	AJLM
289	4985	W	16/02/2017	TR8, Post-ex, Towards scales	AJLM
290	4986	SW	16/02/2017	TR8, Post-ex, Towards scales	AJLM
291	4987	W	16/02/2017	TR8, Post-ex, Showing drain?	AJLM
292	4988	SW	16/02/2017	TR8, Post-ex, Showing drain?	AJLM
293	4989	W	16/02/2017	TR8, Post-ex, Showing drains	AJLM
294	4990	SW	16/02/2017	TR8, Post-ex, Showing drains	AJLM
295	4991	W	16/02/2017	TR8, Post-ex, Towards scales	AJLM
296	4992	SW	16/02/2017	TR8, Post-ex, Cultivation, S of scales	AJLM
297	4993	W	16/02/2017	TR8, Post-ex, At scales	AJLM
298	4994	SW	16/02/2017	TR8, Post-ex, At scales	AJLM
299	4995	W	16/02/2017	TR8, Post-ex, At furrow?	AJLM
300	4996	SW	16/02/2017	TR8, Post-ex, At furrow?	AJLM
301	4997	S	16/02/2017	TR8, Post-ex, At furrow?, Scales	AJLM
302	4998	SW	16/02/2017	TR8, Post-ex, At furrow?	AJLM
303	4999	S	16/02/2017	TR8, Post-ex, At furrow?, Scales	AJLM
304	5001	S	16/02/2017	View towards Temple from TR8, Across TR10	AJLM
305	5002	SW	16/02/2017	TR8, Post-ex, Furrow?	AJLM
306	5003	S	16/02/2017	TR8, Post-ex, Showing Rig + Furrow	AJLM
307	5004	S	16/02/2017	TR8, Post-ex, Showing Rig + Furrow	AJLM
308	5005	SW	16/02/2017	TR8, Post-ex, Cultivation, NW end	AJLM
309	5006	S	16/02/2017	TR8, Post-ex, Showing Rig + Furrow	AJLM
310	5007	SW	16/02/2017	TR8, Post-ex, Cultivation, NW end	AJLM
311	5008	S	16/02/2017	TR8, Post-ex, Showing Rig + Furrow	AJLM

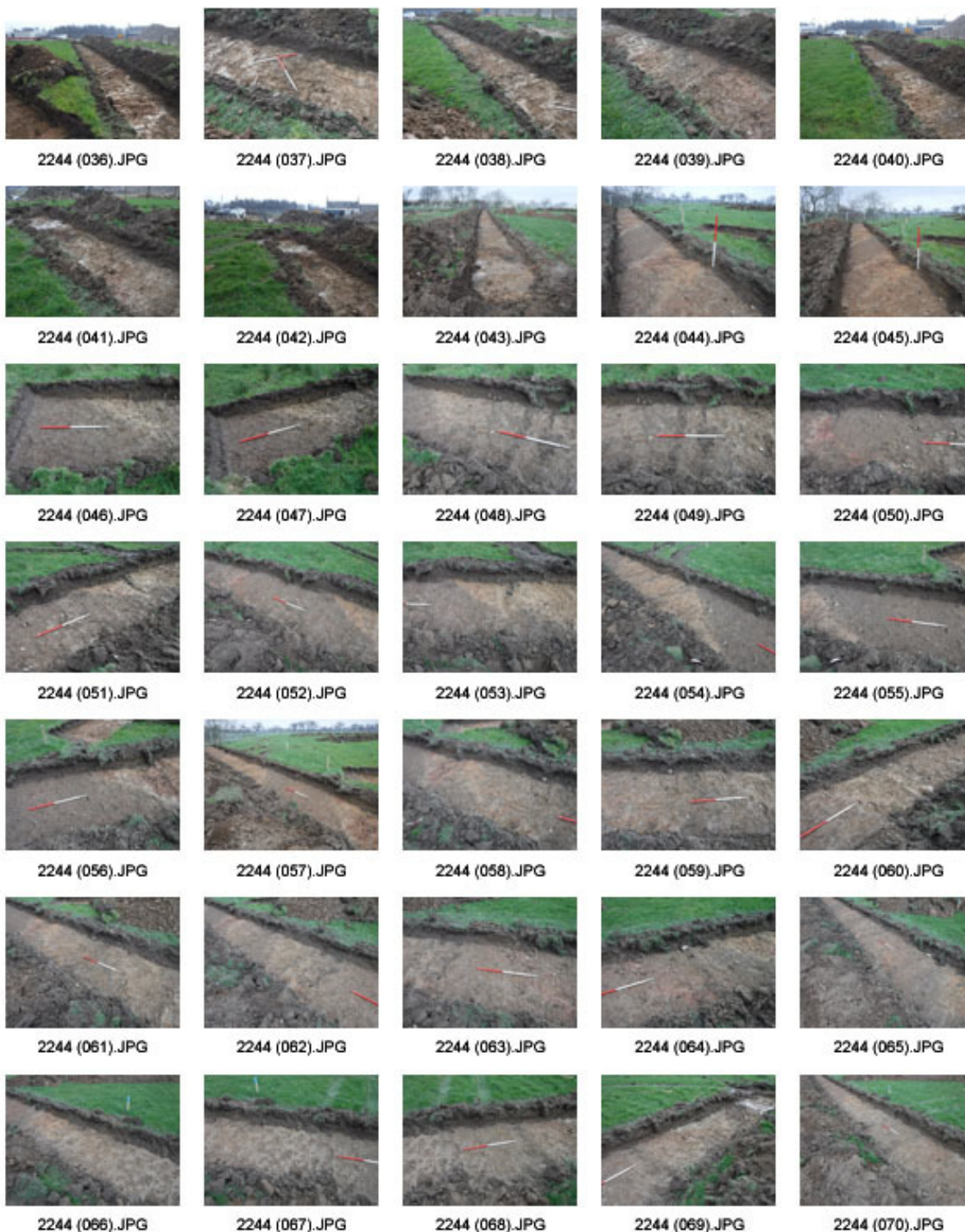
<i>Image No.</i>	<i>Frame</i>	<i>Direction Facing</i>	<i>Date</i>	<i>Description</i>	<i>Taken By</i>
312	5009	S	16/02/2017	TR8, Post-ex, Showing Rig + Furrow	AJLM
313	5010	S	16/02/2017	TR8, Post-ex, Showing Rig + Furrow, Temple	AJLM
314	5011	SE	16/02/2017	TR8, Post-ex, Overall	AJLM
315	5012	E	16/02/2017	TR8, Post-ex, SW facing section	AJLM
316	5013	NE	16/02/2017	TR8, Post-ex, SW facing section	AJLM
317	5014	SW	16/02/2017	TR8, Post-ex, Cultivation, N end	AJLM
318	5015	S	16/02/2017	TR8, Post-ex, Furrow, N end	AJLM
319	5016	S	16/02/2017	TR8, Post-ex, Furrow, Mid trench	AJLM
320	5017	S	16/02/2017	TR8, Post-ex, Furrow, Mid trench, TR10	AJLM
321	5018	SE	16/02/2017	TR8, Post-ex, Rig + Furrow	AJLM
322	5019	SE	16/02/2017	TR8, Post-ex, Rig + Furrow	AJLM
323	5020	SE	16/02/2017	TR8, Post-ex, Rig + Furrow	AJLM
324	5021	SE	16/02/2017	TR8, Post-ex, Rig + Furrow	AJLM
325	5022	E	16/02/2017	TR10, Track, Post-ex, Slot, W facing	AJLM
326	5023	E	16/02/2017	TR10, Track, Post-ex, Slot, Detail	AJLM
327	5024	E	16/02/2017	TR10, Track, Post-ex, Slot, Detail	AJLM
328	5025	V/E	16/02/2017	TR10, Track, Post-ex, Slot, Detail	AJLM
329	5026	NW	17/02/2017	TR11, Post-ex, Overall	AJLM
330	5027	NE	17/02/2017	TR11, Post-ex, S end, Drain	AJLM
331	5028	N	17/02/2017	TR11, Post-ex, Mid, Drain	AJLM
332	5029	NE	17/02/2017	TR11, Post-ex, Mid, Drains	AJLM
333	5030	N	17/02/2017	TR11, Post-ex, N end, Field drain	AJLM
334	5031	NE	17/02/2017	TR11, Post-ex, At scales	AJLM
335	5032	N	17/02/2017	TR11, Post-ex, N end	AJLM
336	5033	NE	17/02/2017	TR11, Post-ex, Drain	AJLM
337	5034	E	17/02/2017	TR11, Post-ex, Scales	AJLM
338	5035	NE	17/02/2017	TR11, Post-ex, N end, Field drain	AJLM
339	5036	E	17/02/2017	TR11, Post-ex, Scales	AJLM
340	5037	SE	17/02/2017	TR11, Post-ex, Overall	AJLM
341	5038	SE	17/02/2017	TR11, Post-ex, Overall	AJLM
342	5039	E	17/02/2017	TR11, Post-ex, N end, Towards farm	AJLM
343	5040	NE	17/02/2017	TR14, Post-ex, Overall	AJLM
344	5041	N	17/02/2017	TR14, Post-ex, Overall	AJLM
345	5042	E	17/02/2017	TR14, Post-ex, SW end, Towards TR12 and TR13	AJLM
346	5043	SE	17/02/2017	TR14, Post-ex, Cultivation and field drain	AJLM
347	5044	E	17/02/2017	TR14, Post-ex, Cultivation and field drain, Towards scales	AJLM
348	5045	SE	17/02/2017	TR14, Post-ex, Field drain, SW end	AJLM
349	5046	E	17/02/2017	TR14, Post-ex, Furrow, Mid trench	AJLM
350	5047	S	17/02/2017	TR14, Post-ex, Field drain, Cultivation, SE end	AJLM
351	5048	SE	17/02/2017	TR14, Post-ex, Furrow, Mid trench	AJLM
352	5049	E	17/02/2017	TR14, Post-ex, Furrow, Mid trench	AJLM
353	5050	E	17/02/2017	TR14, Post-ex, Towards NE end	AJLM
354	5051	SE	17/02/2017	TR14, Post-ex, Furrow, Mid trench	AJLM
355	5052	E	17/02/2017	TR14, Post-ex, Towards NE end	AJLM
356	5053	S	17/02/2017	TR14, Post-ex, Furrow	AJLM
357	5054	SE	17/02/2017	TR14, Post-ex, Field drain, NE end	AJLM
358	5055	S	17/02/2017	TR14, Post-ex, Furrow, Towards TR12 and TR13	AJLM
359	5056	SE	17/02/2017	TR14, Post-ex, NE end of trench	AJLM
360	5057	S	17/02/2017	TR14, Post-ex, Furrow, Mid trench	AJLM
361	5058	SE	17/02/2017	TR14, Post-ex, Furrow, NE end	AJLM
362	5059	S	17/02/2017	TR14, Post-ex, Rig + Furrow	AJLM
363	5060	SW	17/02/2017	TR14, Post-ex, Overall	AJLM
364	5061	S	17/02/2017	TR14, Post-ex, Overall, w/ TR12 and TR13	AJLM
365	5062	NE	17/02/2017	TR13, Post-ex, Overall	AJLM
366	5063	NE	17/02/2017	TR13, Post-ex, Overall	AJLM
367	5064	N	17/02/2017	TR13, Post-ex, w/ TR14	AJLM
368	5065	NE	17/02/2017	TR13, Post-ex, w/ TR12	AJLM
369	5066	NW	17/02/2017	TR13, Post-ex, SW end, Plow strikes?	AJLM
370	5067	N	17/02/2017	TR13, Post-ex, Showing Rig + Furrow, TR14	AJLM
371	5068	NW	17/02/2017	TR13, Post-ex, Plow strikes?	AJLM
372	5069	N	17/02/2017	TR13, Post-ex, R + F	AJLM
373	5070	W	17/02/2017	TR13, Post-ex, Furrow, SW end	AJLM
374	5071	NW	17/02/2017	TR13, Post-ex, R + F ->	AJLM

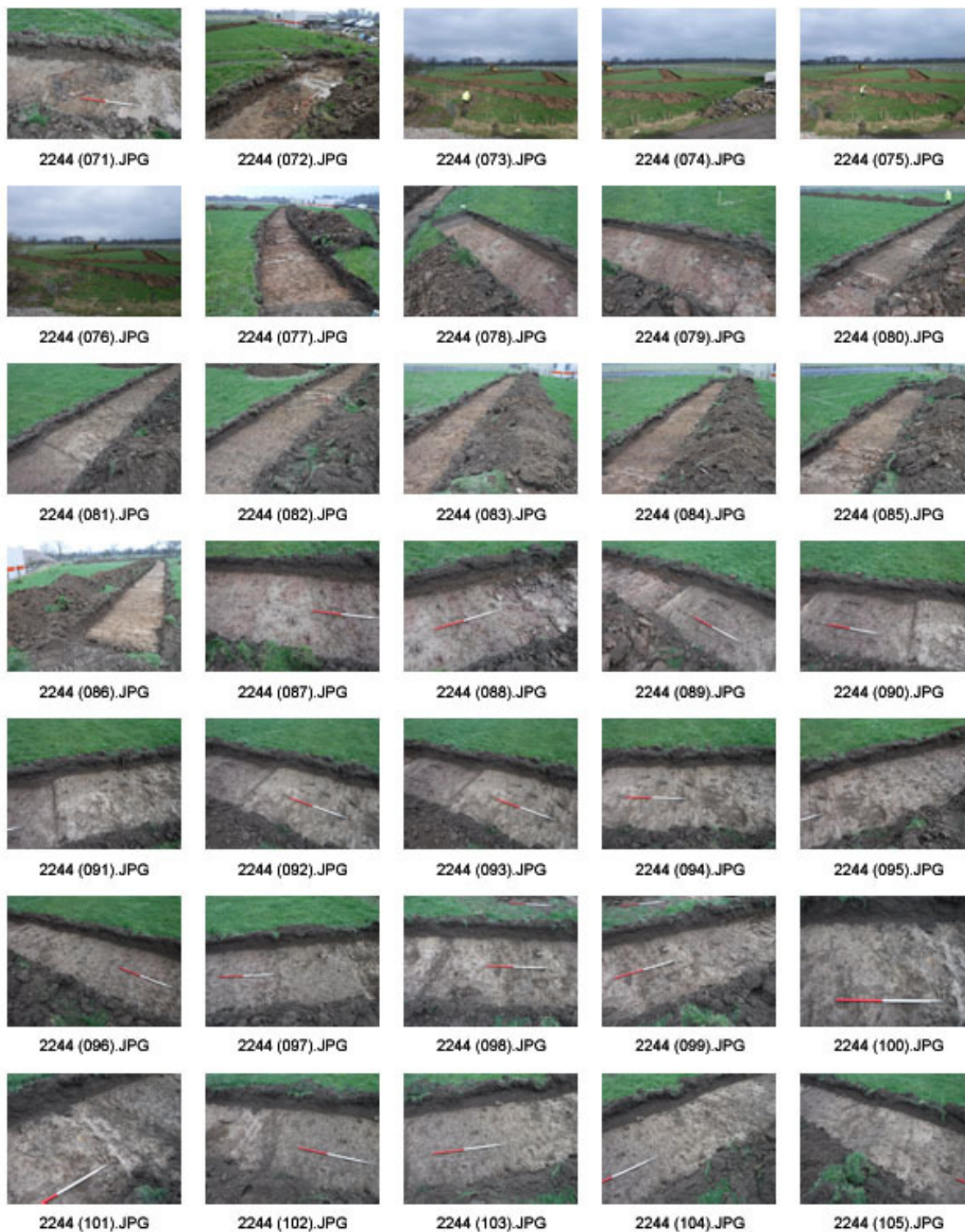
Image No.	Frame	Direction Facing	Date	Description	Taken By
375	5072	N	17/02/2017	TR13, Post-ex, R + F ->	AJLM
376	5073	NW	17/02/2017	TR13, Post-ex, R + F ->	AJLM
377	5074	W	17/02/2017	TR13, Post-ex, R + F ->	AJLM
378	5075	N	17/02/2017	TR13, Post-ex, R + F ->	AJLM
379	5076	N	17/02/2017	TR13, Post-ex, R + F ->	AJLM
380	5077	NW	17/02/2017	TR13, Post-ex, R + F ->	AJLM
381	5078	NW	17/02/2017	TR13, Post-ex, R + F ->	AJLM
382	5079	NW	17/02/2017	TR13, Post-ex, R + F ->	AJLM
383	5080	W	17/02/2017	TR13, Post-ex, Towards SW end	AJLM
384	5081	N	17/02/2017	TR13, Post-ex, R + F ->	AJLM
385	5082	NW	17/02/2017	TR13, Post-ex, R + F -> @ Scales	AJLM
386	5083	W	17/02/2017	TR13, Post-ex, R + F ->	AJLM
387	5084	NW	17/02/2017	TR13, Post-ex, R + F ->	AJLM
388	5085	N	17/02/2017	TR13, Post-ex, R + F ->	AJLM
389	5086	NW	17/02/2017	TR13, Post-ex, R + F ->	AJLM
390	5087	W	17/02/2017	TR13, Post-ex, R + F ->	AJLM
391	5088	NW	17/02/2017	TR13, Post-ex, Field drain ->	AJLM
392	5089	W	17/02/2017	TR13, Post-ex, R + F ->	AJLM
393	5090	NW	17/02/2017	TR13, Post-ex, R + F ->	AJLM
394	5091	W	17/02/2017	TR13, Post-ex, R + F ->	AJLM
395	5092	NW	17/02/2017	TR13, Post-ex, R + F ->	AJLM
396	5093	W	17/02/2017	TR13, Post-ex, R + F ->	AJLM
397	5094	NW	17/02/2017	TR13, Post-ex, R + F ->	AJLM
398	5095	W	17/02/2017	TR13, Post-ex, R + F ->	AJLM
399	5096	NW	17/02/2017	TR13, Post-ex, R + F ->	AJLM
400	5097	W	17/02/2017	TR13, Post-ex, R + F ->	AJLM
401	5098	NW	17/02/2017	TR13, Post-ex, R + F ->	AJLM
402	5099	W	17/02/2017	TR13, Post-ex, R + F ->	AJLM
403	5100	NW	17/02/2017	TR13, Post-ex, R + F ->	AJLM
404	5101	W	17/02/2017	TR13, Post-ex, NE end, Overall	AJLM
405	5102	NW	17/02/2017	TR13, Post-ex, NE end	AJLM
406	5103	SW	17/02/2017	TR13, Post-ex, Overall	AJLM
407	5104	SW	17/02/2017	TR13, Post-ex, R + F, w/ TR12	AJLM
408	5105	W	17/02/2017	TR13, Post-ex, SE facing section	AJLM
409	5106	NW	17/02/2017	TR13, Post-ex, SE facing section	AJLM
410	5107	N	17/02/2017	TR13, Post-ex, R + F near NE end	AJLM
411	5108	N	17/02/2017	TR13, Post-ex, R + F near NE end, Towards East Field	AJLM
412	5109	N	17/02/2017	TR13, Post-ex, R + F	AJLM
413	5110	N	17/02/2017	TR13, Post-ex, R + F	AJLM
414	5111	N	17/02/2017	TR13, Post-ex, R + F, NE end	AJLM
415	5112	NE	17/02/2017	TR13, Post-ex, NW facing section, w/ TR12	AJLM
416	5113	E	17/02/2017	TR13, Post-ex, NW facing section, w/ TR12	AJLM
417	5114	NE	17/02/2017	TR13, Post-ex, NW facing section	AJLM
418	5115	SE	17/02/2017	TR13, Post-ex, NW facing section	AJLM
419	5116	NE	17/02/2017	TR12, Post-ex, Overall	AJLM
420	5117	NE	17/02/2017	TR12, Post-ex, Overall, w/ TR13 and TR14	AJLM
421	5118	N	17/02/2017	TR12, Post-ex, SW end	AJLM
422	5119	NE	17/02/2017	TR12, Post-ex, SW end, w/ TR13 ->	AJLM
423	5120	NW	17/02/2017	TR12, Post-ex, R + F ->	AJLM
424	5121	NE	17/02/2017	TR12, Post-ex, R + F ->	AJLM
425	5122	NW	17/02/2017	TR12, Post-ex, R + F ->	AJLM
426	5123	NE	17/02/2017	TR12, Post-ex, R + F ->	AJLM
427	5124	NW	17/02/2017	TR12, Post-ex, R + F ->	AJLM
428	5125	NE	17/02/2017	TR12, Post-ex, R + F ->	AJLM
429	5126	NW	17/02/2017	TR12, Post-ex, R + F ->	AJLM
430	5127	NE	17/02/2017	TR12, Post-ex, R + F ->	AJLM
431	5128	W	17/02/2017	TR12, Post-ex, R + F ->	AJLM
432	5129	NW	17/02/2017	TR12, Post-ex, R + F ->	AJLM
433	5130	W	17/02/2017	TR12, Post-ex, R + F ->	AJLM
434	5131	NE	17/02/2017	TR12, Post-ex, R + F ->	AJLM
435	5132	NW	17/02/2017	TR12, Post-ex, R + F ->	AJLM
436	5133	W	17/02/2017	TR12, Post-ex, R + F ->	AJLM
437	5134	N	17/02/2017	TR12, Post-ex, R + F ->	AJLM

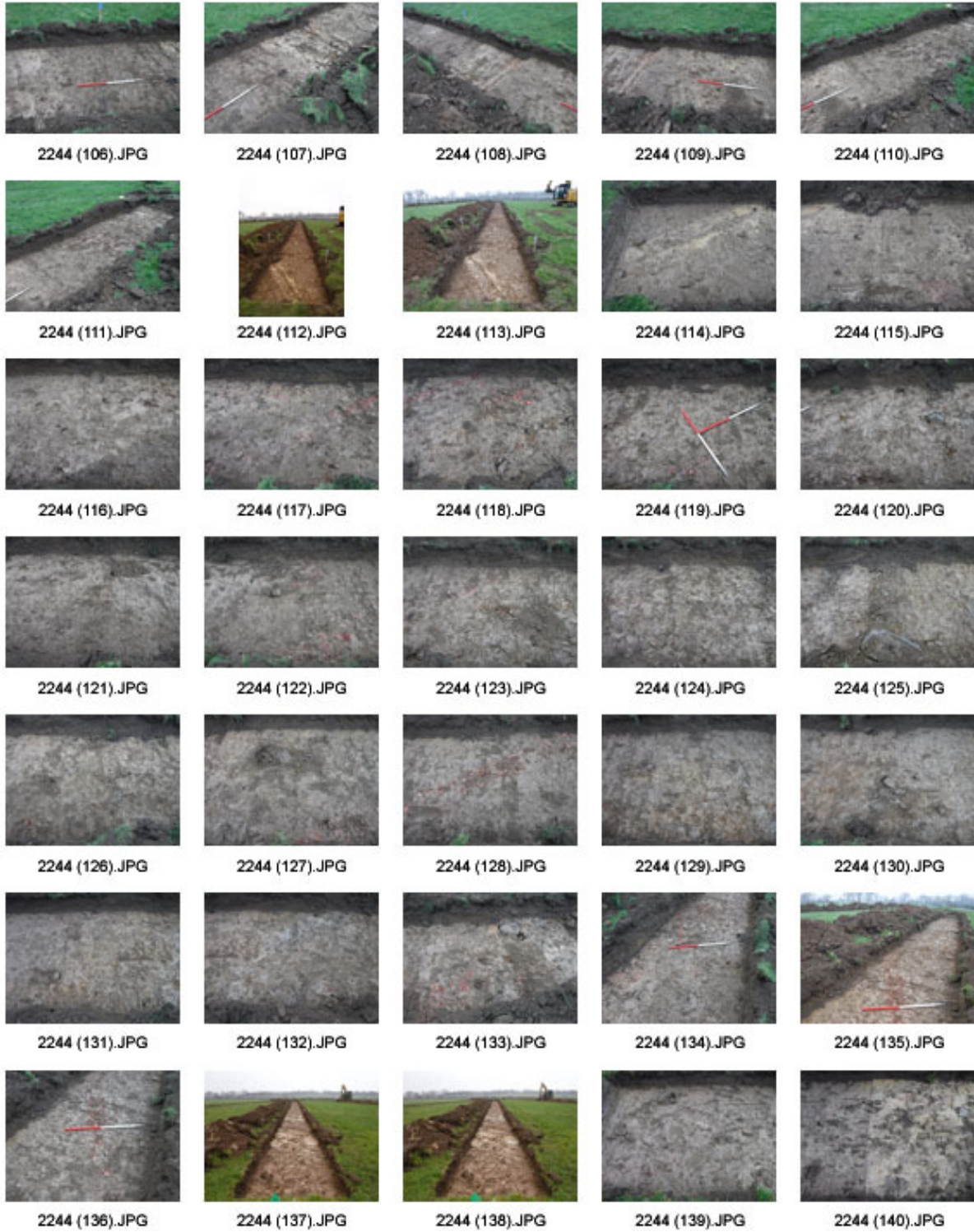
Image No.	Frame	Direction Facing	Date	Description	Taken By
438	5135	NW	17/02/2017	TR12, Post-ex, R + F ->	AJLM
439	5136	W	17/02/2017	TR12, Post-ex, R + F ->	AJLM
440	5137	N	17/02/2017	TR12, Post-ex, R + F ->	AJLM
441	5138	NW	17/02/2017	TR12, Post-ex, R + F ->	AJLM
442	5139	W	17/02/2017	TR12, Post-ex, R + F ->	AJLM
443	5140	NE	17/02/2017	TR12, Post-ex, R + F ->	AJLM
444	5141	NW	17/02/2017	TR12, Post-ex, R + F ->	AJLM
445	5142	W	17/02/2017	TR12, Post-ex, R + F ->	AJLM
446	5143	NE	17/02/2017	TR12, Post-ex, R + F ->	AJLM
447	5144	NW	17/02/2017	TR12, Post-ex, R + F ->	AJLM
448	5145	W	17/02/2017	TR12, Post-ex, R + F ->	AJLM
449	5146	NE	17/02/2017	TR12, Post-ex, R + F ->	AJLM
450	5147	NW	17/02/2017	TR12, Post-ex, R + F ->	AJLM
451	5148	W	17/02/2017	TR12, Post-ex, R + F ->	AJLM
452	5149	NE	17/02/2017	TR12, Post-ex, R + F ->	AJLM
453	5150	NW	17/02/2017	TR12, Post-ex, R + F ->	AJLM
454	5151	W	17/02/2017	TR12, Post-ex, R + F ->	AJLM
455	5152	NE	17/02/2017	TR12, Post-ex, R + F, NE end ->	AJLM
456	5153	NW	17/02/2017	TR12, Post-ex, NE end, R + F	AJLM
457	5154	W	17/02/2017	TR12, Post-ex, NE end, R + F	AJLM
458	5155	NE	17/02/2017	TR12, Post-ex, NE end	AJLM
459	5156	NW	17/02/2017	TR12, Post-ex, NE end	AJLM
460	5157	SW	17/02/2017	TR12, Post-ex, Overall	AJLM
461	5158	NE	17/02/2017	TR12, Post-ex, NE end	AJLM
462	5159	SW	17/02/2017	TR12, Post-ex, Overall	AJLM
463	5160	S	17/02/2017	TR12, Post-ex, NE end, w/ Temple	AJLM
464	5161	SSW	17/02/2017	TR12, Post-ex, Overall	AJLM
465	5162	SSW	17/02/2017	TR12, Post-ex, Overall	AJLM
466	5163	S	17/02/2017	TR12, Post-ex, Overall	AJLM
467	5164	N	17/02/2017	TR12, Post-ex, SE facing section	AJLM
468	5165	NW	17/02/2017	TR12, Post-ex, SE facing section	AJLM

Appendix B Photographic Thumbnails

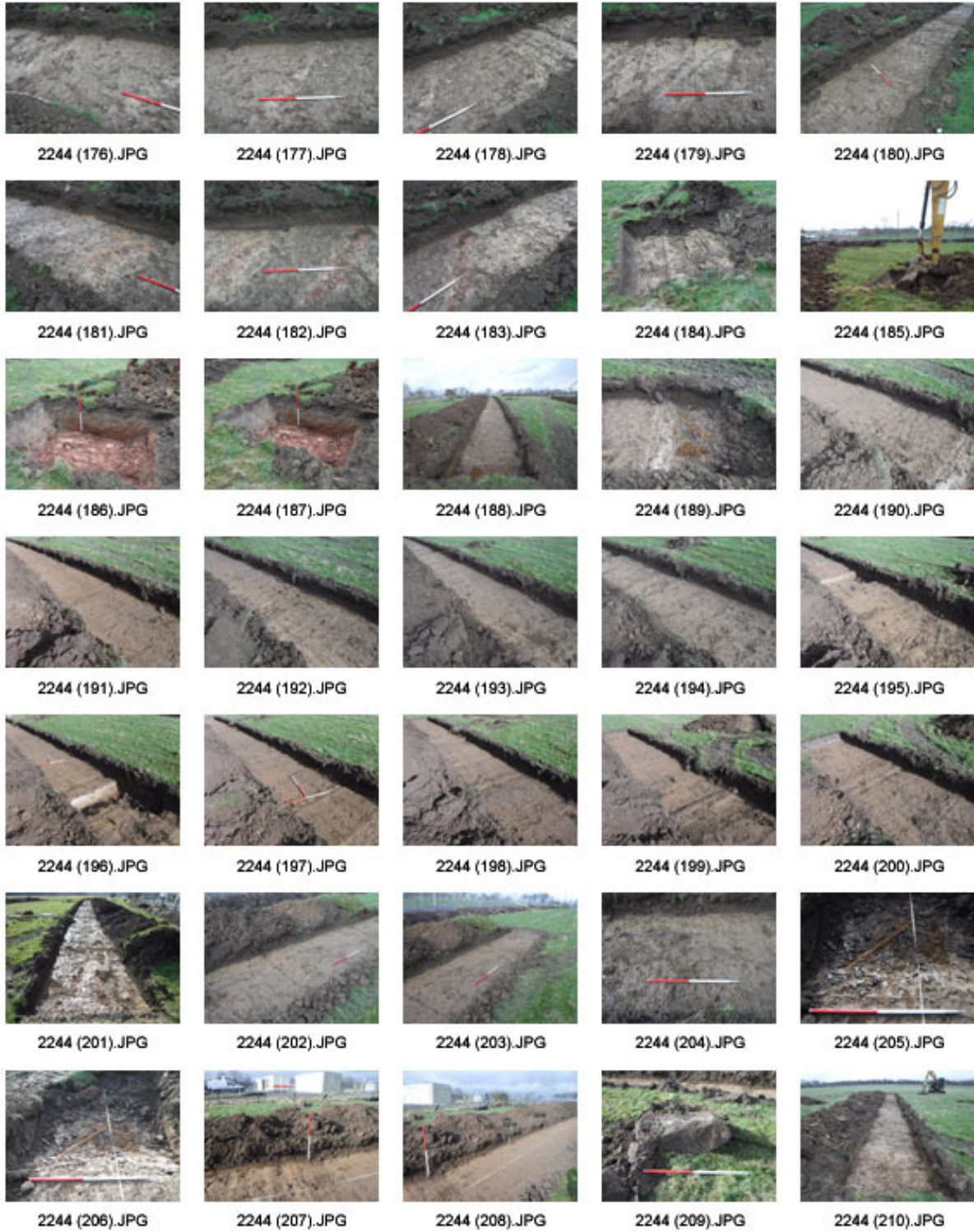














2244 (211).JPG



2244 (212).JPG



2244 (213).JPG



2244 (214).JPG



2244 (215).JPG



2244 (216).JPG



2244 (217).JPG



2244 (218).JPG



2244 (219).JPG



2244 (220).JPG



2244 (221).JPG



2244 (222).JPG



2244 (223).JPG



2244 (224).JPG



2244 (225).JPG



2244 (226).JPG



2244 (227).JPG



2244 (228).JPG



2244 (229).JPG



2244 (230).JPG



2244 (231).JPG



2244 (232).JPG



2244 (233).JPG



2244 (234).JPG



2244 (235).JPG



2244 (236).JPG



2244 (237).JPG



2244 (238).JPG



2244 (239).JPG



2244 (240).JPG



2244 (241).JPG



2244 (242).JPG



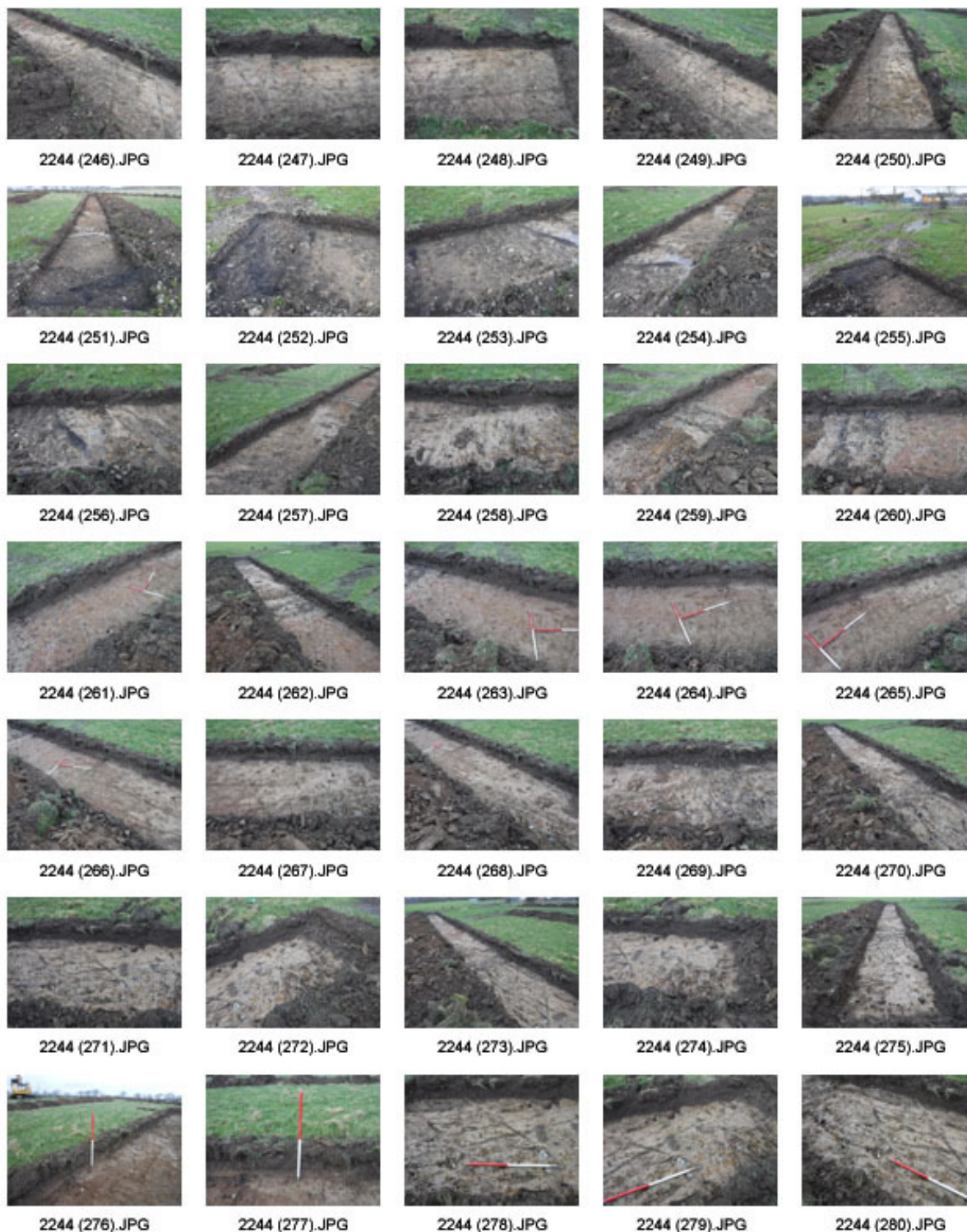
2244 (243).JPG



2244 (244).JPG



2244 (245).JPG





2244 (281).JPG



2244 (282).JPG



2244 (283).JPG



2244 (284).JPG



2244 (285).JPG



2244 (286).JPG



2244 (287).JPG



2244 (288).JPG



2244 (289).JPG



2244 (290).JPG



2244 (291).JPG



2244 (292).JPG



2244 (293).JPG



2244 (294).JPG



2244 (295).JPG



2244 (296).JPG



2244 (297).JPG



2244 (298).JPG



2244 (299).JPG



2244 (300).JPG



2244 (301).JPG



2244 (302).JPG



2244 (303).JPG



2244 (304).JPG



2244 (305).JPG



2244 (306).JPG



2244 (307).JPG



2244 (308).JPG



2244 (309).JPG



2244 (310).JPG



2244 (311).JPG



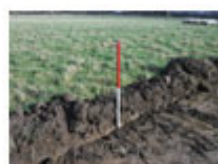
2244 (312).JPG



2244 (313).JPG



2244 (314).JPG



2244 (315).JPG



2244 (316).JPG



2244 (317).JPG



2244 (318).JPG



2244 (319).JPG



2244 (320).JPG



2244 (321).JPG



2244 (322).JPG



2244 (323).JPG



2244 (324).JPG



2244 (325).JPG



2244 (326).JPG



2244 (327).JPG



2244 (328).JPG



2244 (329).JPG



2244 (330).JPG



2244 (331).JPG



2244 (332).JPG



2244 (333).JPG



2244 (334).JPG



2244 (335).JPG



2244 (336).JPG



2244 (337).JPG



2244 (338).JPG



2244 (339).JPG



2244 (340).JPG



2244 (341).JPG



2244 (342).JPG



2244 (343).JPG



2244 (344).JPG



2244 (345).JPG



2244 (346).JPG



2244 (347).JPG



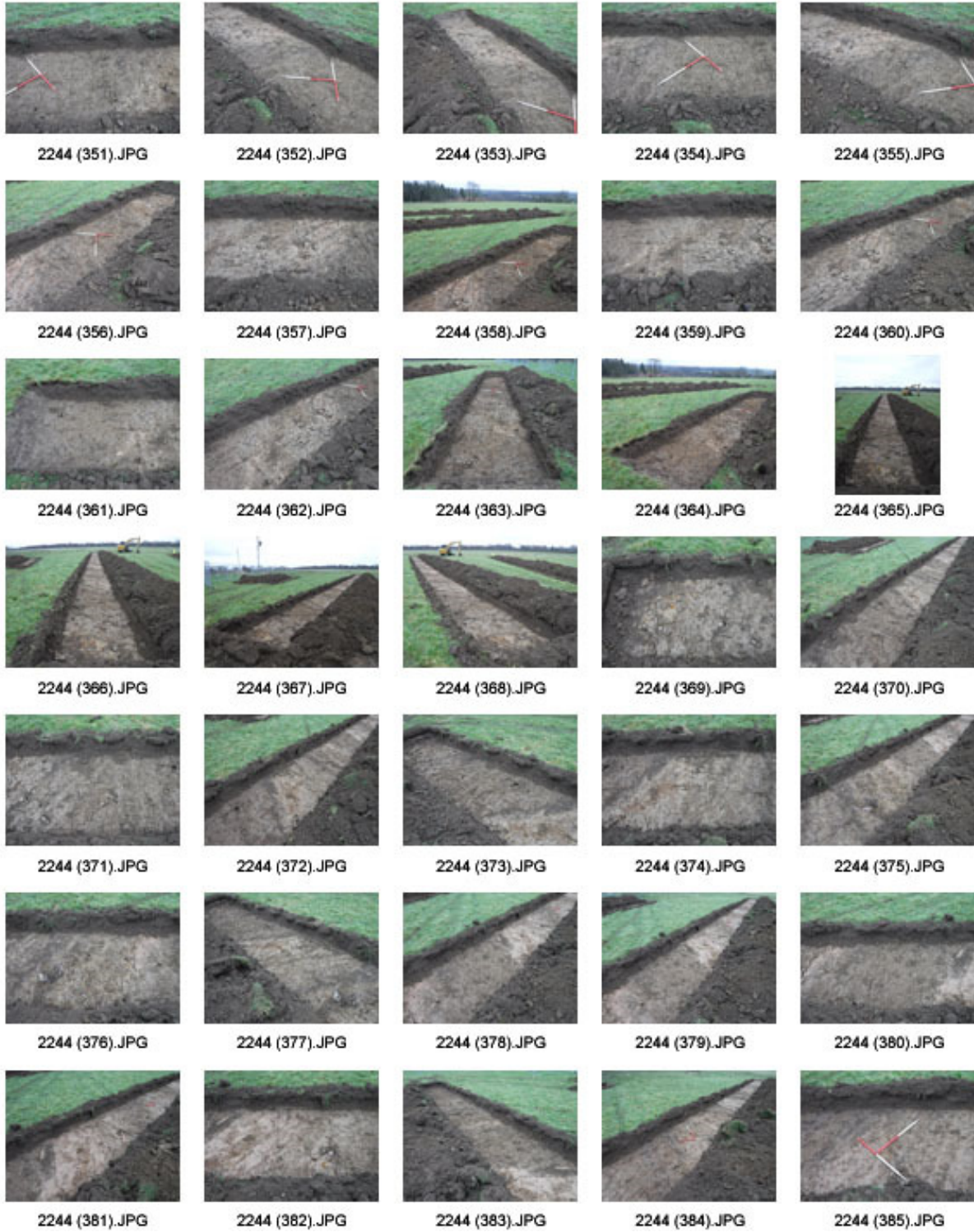
2244 (348).JPG

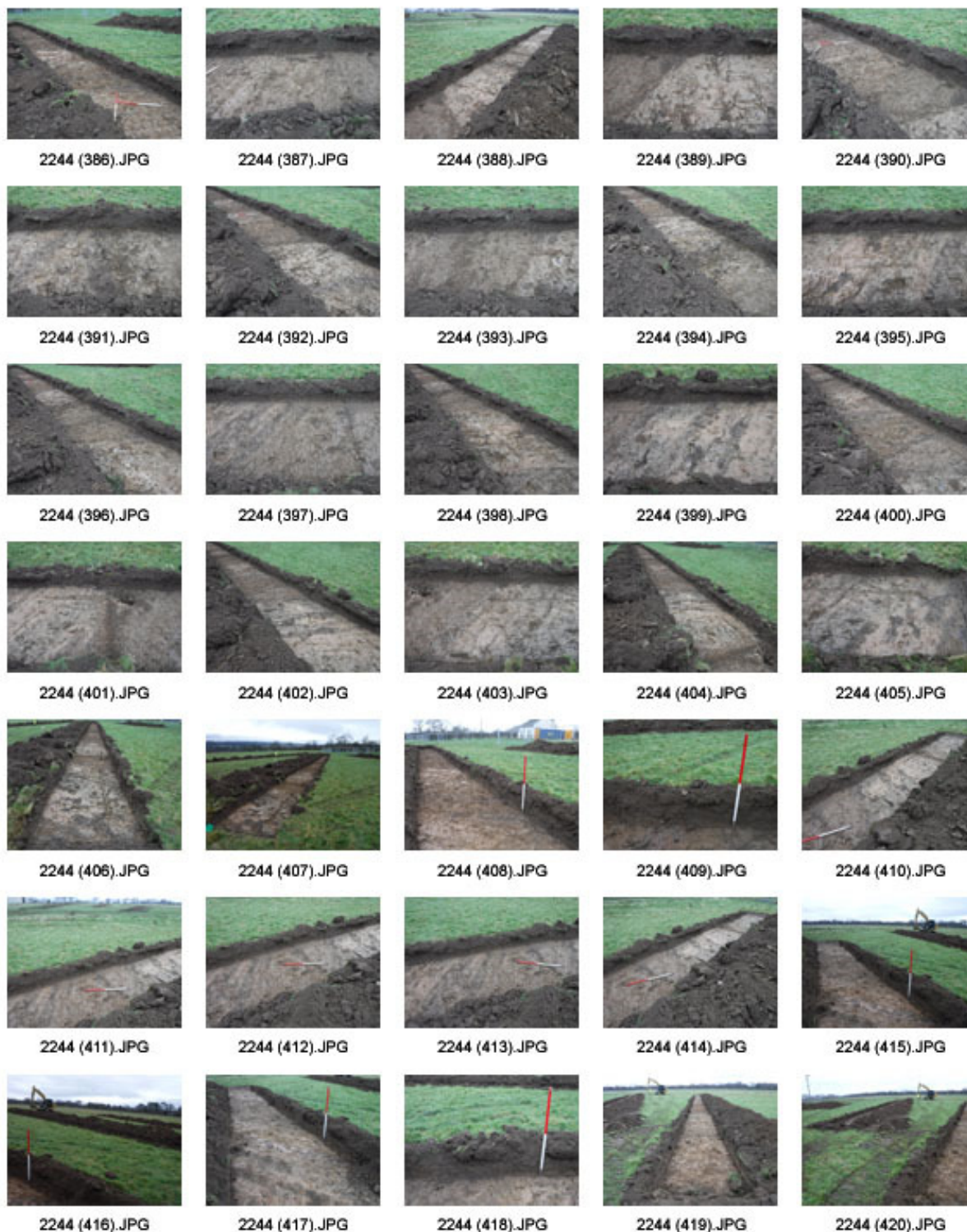


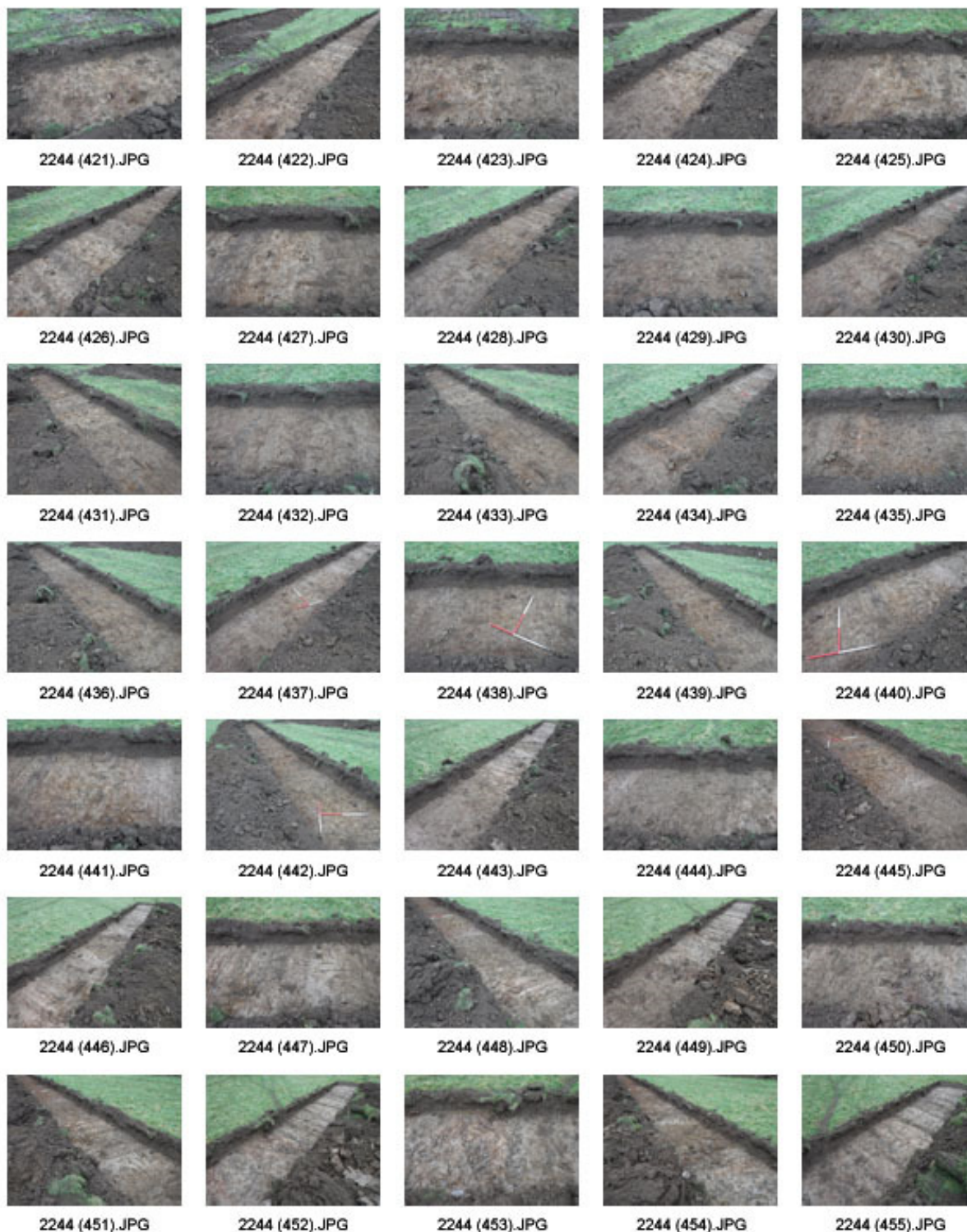
2244 (349).JPG



2244 (350).JPG









2244 (456).JPG



2244 (457).JPG



2244 (458).JPG



2244 (459).JPG



2244 (460).JPG



2244 (461).JPG



2244 (462).JPG



2244 (463).JPG



2244 (464).JPG



2244 (465).JPG



2244 (466).JPG



2244 (467).JPG



2244 (468).JPG