

Land behind 7, The Paddock

Lanchester, County Durham

Archaeological Evaluation: September 2017

for

Beavertail Ltd

September 2017



The Land behind the Paddock

Addyman Archaeology

Archaeology Heritage Consultancy Architecture

Addyman Archaeology

The Old Printworks, 77a Brunswick Street, Edinburgh EH7 5HS
admin@addyman-archaeology.co.uk
0131 555 4678

Land behind 7, The Paddock

Lanchester, County Durham

Archaeological Evaluation: September 2017

Job number 2303.00

October 2017

by Antoine Ruchonnet

Contents

Illustrations

Acknowledgements

Executive Summary

1.	Introduction	4
	i. General	4
	ii. Site location and setting	5
2.	Historical Summary	7
3.	Methodology	8
4.	Results	8
	i. Trench 1	8
	ii. Trench 2	9
	iii. Trench 3	10
	iv. Trench 4	11
	v. Trench 5	12
	vi. Trench 6	13
	vii. Trench 7	15
5.	Discussion	18
	References	20
Appendix A	Context Register	21
Appendix B	Trenches Summary	24
Appendix C	Photograph Register	25
Appendix D	Contact Sheets	27

Illustrations

List of Figures

Figure 1 Site location	6
Figure 2 Trench location	8
Figure 3 Trench location	17

List of Plates

Plate 1 Trench 1, general view, post-ex	9
Plate 2 Trench 1, plough strike [105], section	9
Plate 3 Trench 2, general view, post-ex	10
Plate 4 Trench 2, plough strikes [206]	10
Plate 5 Trench 3, general view, post-ex	11
Plate 6 Trench 3, field drain [304]	11
Plate 7 Trench 4, general view, post-ex	12
Plate 8 Trench 4, plough marks [406]	12
Plate 9 Trench 5, general view, post-ex	13
Plate 10 Trench 5, plough marks [505], [506] in background	13
Plate 11 Trench 6, general view, post-ex	14
Plate 12 Trench 6, ceramic pipe drain [605], detail	14
Plate 13 Trench 7, general view, post-ex	15
Plate 14 Trench 7, field drain [703], detail	15
Plate 15 Trench 1, plough strike [105]	19
Plate 16 Trench 2, plough marks [205]	19
Plate 17 Trench 2, field drain [204]	19
Plate 18 Trench 6, field drain [606], section	19

List of Tables

Table 1 Contexts encountered in trench 1	9
Table 2 Contexts encountered in trench 2	10
Table 3 Contexts encountered in trench 3	11
Table 4 Contexts encountered in trench 4	12
Table 5 Contexts encountered in trench 5	13
Table 6 Contexts encountered in trench 6	14
Table 7 Contexts encountered in trench 7	16

Unless otherwise stated, all content is the copyright of Simpson & Brown *Architects* with Addyman Archaeology.

Acknowledgements

Many thanks to P. Henderson for his professionalism and kind understanding of the needs and expectations of an archaeological evaluation. Thanks to Charles Burnett, land owner, for the valuable information he provided about his land. Many thanks to Duncan MacGregor, from Beavertail Ltd for his help in arranging access, logistics and in expediting the work conducted in the best manner possible.

For Addyman Archaeology, the fieldwork was undertaken by Philip Karsgaard and Antoine Ruchonnet.

Land behind 7, The Paddock

Lanchester, County Durham

Archaeological Evaluation

Executive Summary

Addyman Archaeology undertook a programme of archaeological evaluation and trial trenching in advance of the development of land to the south of and including No 7, The Paddock, Lanchester, County Durham in advance of development of the site for housing. The proposed development site lies 90m east of the eastern boundary of the Scheduled Area of the Lanchester Roman Fort and 400m east of the south-west corner of the Longovicium Roman fort itself. The Scheduled Area is a complex of related sites, including the fort itself, its associated civilian settlement or vicus, and the Dere Street Roman Road. The same site is also an unconfirmed candidate for the Battle of Brunanburh in 937AD.

Seven evaluation trenches were excavated across the development area, comprising a 5% sample of the site. The evaluation trenches unearthed agricultural features, mostly for drainage and some plough marks. No material or features connected to the Roman camp or its nearby *vicus* were uncovered; neither were there any finds or features related to the Battle of Brunanburh or later medieval activity.

1. Introduction

i. General

Addyman Archaeology was contracted by Lichfields (contact: James Taylor) on behalf of Beavertail Ltd (contact: Duncan McGregor) to undertake a programme of archaeological evaluation and trial trenching in advance of the development of land to the south of and including No 7 The Paddock, Lanchester, County Durham, DH7 0HW. The proposed development consists of the construction of up to 14 new dwellings in a field of semi-improved grassland (planning ref. DM/16/00871/OUT). This archaeological evaluation report describes the methodology for the first stage of invasive archaeological works in order to fulfil the requirements of the archaeological conditions of the planning consent, subject to approval by the Durham County Council Archaeology Section (DCCAS) and subsequent results.

Given the number of proposed new dwellings, as well as the west-to-east slope of the development area, potentially requiring terracing or other ground-disturbing works, and the drainage and sub-ground services required, ground disturbance across the site is likely to be destructive of any existing archaeology. This evaluation stage is therefore intended as a preliminary assessment in order to inform on the nature and extent of any existing sub-surface archaeological features and therefore on any subsequent mitigation.

A record of the work undertaken (*OASIS ID: addyman1-299665*) has been deposited with the Online Access to the Index of Archaeological Investigations (OASIS) website hosted by the Archaeological Data Service.

ii. Site location and setting

The development area lies on the south side of Lanchester village, and includes a straight-sided rectangular field south of No. 7, The Paddock, Lanchester, Durham and the existing house. The development area is centred on grid reference NZ16449 46945 and is c1.2ha in extent. It comprises an area of semi-improved grassland bordered on its north side by mature trees and the existing housing along the Paddock, by existing housing on its east side, and on its south and west sides by agricultural land and mature trees. The ground slopes uniformly down from the west to the east at an approximately 1:11 gradient.

The underlying solid geology of the area comprises Carboniferous strata of mudstone, siltstone and sandstone of the Pennine Lower Coal Measures Formation, which are overlain by Devensian diamicton till (BGS 2017).

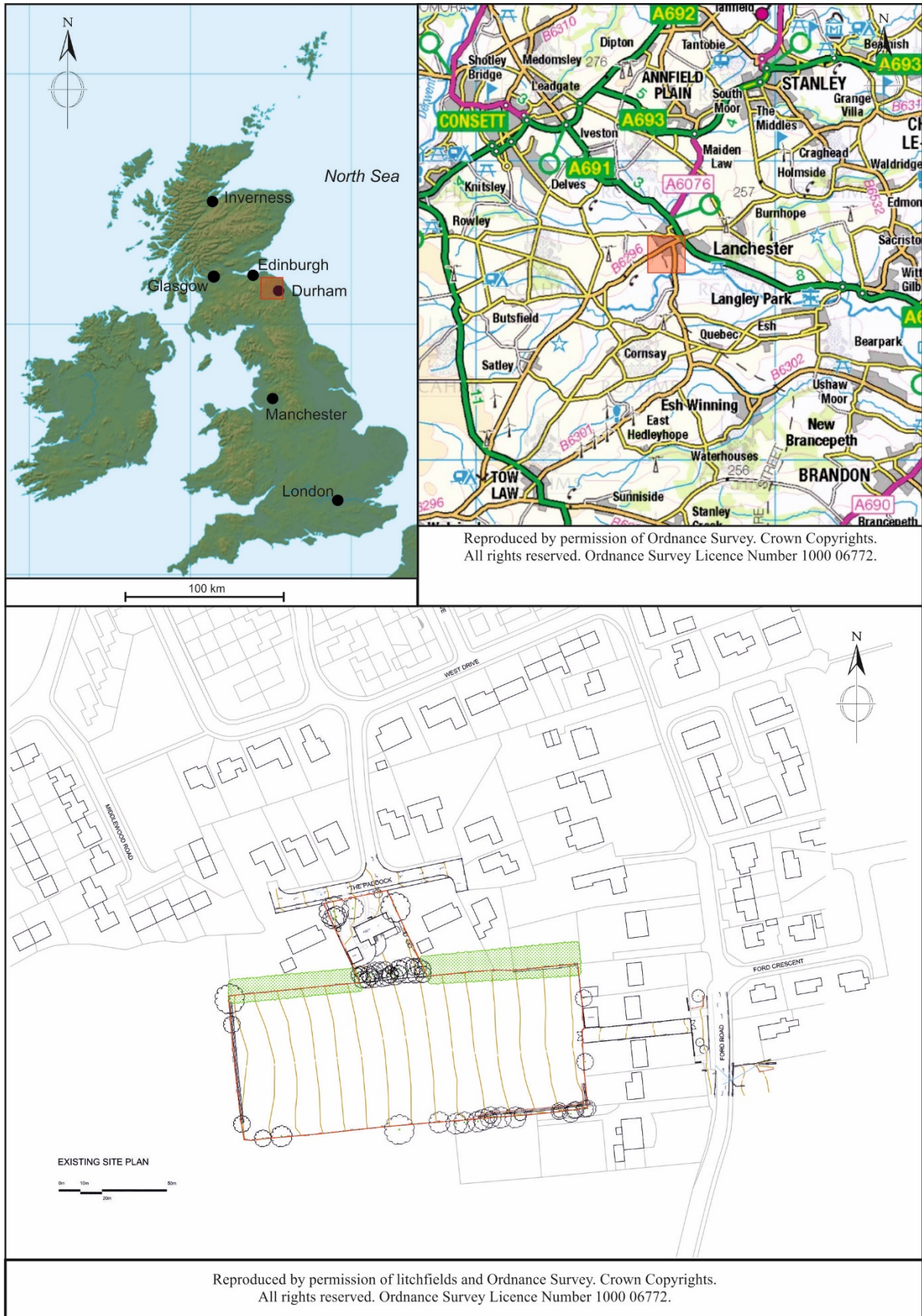


Figure 1 Site location

2. *Historical Summary*

A comprehensive archaeological desk-based assessment (DBA) was conducted by The Archaeological Practice (2016), which included an evaluation of the cultural heritage on and near the present development area. This assessment included map regressions, examination of aerial photographs, consultations of relevant documentary records for the area, compilation and evaluation of previous surrounding archaeological works including geophysical surveys, examinations of the Historic Environment Record (HER) for the area, and site visits. Full details of this report will therefore not be replicated here save to summarise the salient conclusions.

No previous invasive archaeological work has been conducted directly on the present development site. A geophysics survey conducted at the site indicated the possibility of the presence of ridge and furrow traces and a possible land drain (Archaeological Services Durham University 2016: 7) but no other significant archaeological features.

No early prehistoric sites or finds are attested on the site, though an undated “ancient” spearhead was recovered immediately east of the development area in 1914 (Archaeological Practice 2016: 19, site 22).

The development area lies 90m east of the eastern boundary of the Scheduled Area of the Lanchester Roman Fort (HER ref. H 1850), and 400m east of the south-west corner of the Longovicium Roman fort itself. The Scheduled Area is a complex of related sites, including the fort itself, its associated civilian settlement or vicus, and the Dere Street Roman Road. Detailed surface- and plough soil-assemblage artefacts surveys and geophysics have suggested that the boundaries of the associated vicus and associated features lie on a terrace some 200 to 250m west of the present development area (Archaeological Practice 2016: 24-5). The same site is also an unconfirmed candidate for the Battle of Brunanburh in 937AD.

No sites of the medieval or post-medieval period are directly attested for the development area. Lanchester parish church is known to have been founded in the 11th century and settlement nearby likely dates from this period or earlier. Analysis of maps and other sources indicate that in the medieval period the development area lay in an area close enough to the village centre to be within the medieval town fields, demarcated by uncultivated strips or bulks rather than ditches. Evidence of medieval and post-medieval cultivation in the form of ridge and furrow is attested in fields around the development area. More recently, the proposed development area appears to have been impacted by urban spread on the south side of Lanchester, which it now borders. This has entailed the slight alteration of the shape and size of The Paddock: the west border was straightened and moved eastwards in the mid-19th century, and its north and east boundaries pushed south and west, respectively, a century later, leaving the southern boundary as the only original (perhaps 18th or early 19th century) boundary surviving from the periods of its Enclosure.

3. Methodology

The evaluation consisted of seven evaluation trenches excavated within the footprint of the development area (figure 2). The trenches measured approximately 50m in length and 1.5m in width. This comprised a 5% sample of the development area. The trenches were excavated until undisturbed natural deposits were encountered which reached a depth between 0.38m to 0.5m. The excavation of the trenches was undertaken by a back-acting mechanical excavator fitted with a toothless ditching bucket of 1.5m width, acting under direct archaeological supervision. Trenches were hand cleaned where necessary to allow the identification, and recording, of archaeological features.



Figure 2 Trench location

4. Results

All trenches revealed agricultural activities, in the form of field drains, ridge and furrow, plough strike, marks and scores (figure 3). No archaeological remains or features directly pertaining to the Roman camp or its associated *vicus* were discovered. A few small fragments of white porcelain and tin-glazed ceramic were uncovered but not retained. A full list of contexts can be found in *Appendix A* and a description of the Trenches is provided in *Appendix B*.

i. Trench 1

Trench 1 (*Plate 1*) was excavated in the south-west corner of the site. It measured 49m long, 1.5m wide and a depth of 0.4m, oriented NW-SE.

The topsoil (101) was laying directly over the undisturbed natural (102) and no archaeological features were seen during excavation. There were, however, a few indications of agricultural activity, cut into the natural, here described from west to east:

- Concentration of plough strikes [103] backfilled with topsoil (101), one E-W intersecting four N-S plough strikes.
- Linear field drain oriented E-W [108] filled by (109), steep sides and flat base.
- Two E-W furrows separated by a ridge [106].
- Linear E-W field drain [104], steep side and flattish base, filled by (107) and one E-W plough strike.
- Two E-W linear plough strike [105], one deep and one shallow (*Plate 2*).



Plate 1 Trench 1, general view, post-ex

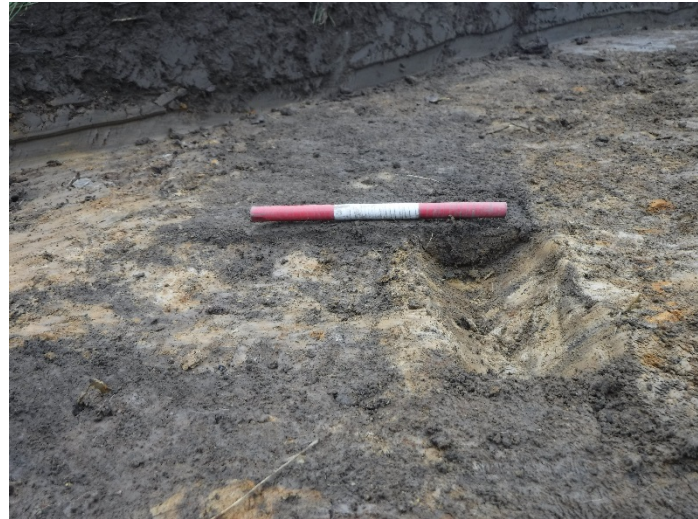


Plate 2 Trench 1, plough strike [105], section

<i>Context Number</i>	<i>Description</i>
(101)	Topsoil. Moderate compaction, greyish-mid brown loamy silt.
(102)	Natural. Firm, orange-brown sandy clay.
[103]	Plough strikes. Four N-S, linear plough strikes, one E-W linear plough strike. L: 0.7, >0.4, 0.6, 0.6, 1.0 W: 0.1
[104]	Plough strike and cut for field drain. E-W linear cut for field drain, steep side and flattish base, filled by (107) and E-W plough strike (1.2 x 0.1)
[105]	Plough strikes. Two E-W linear plough strike, one deep (>1.4 x 0.14 x 0.07) and one shallow (>1 x 0.2 x 0.02).
[106]	Ridge and furrow. Two E-W furrows separated by a ridge 3.5/3.5/2
(107)	Fill of field drain [104]. Moderate to firm greyish-brown, loamy clay.
[108]	Cut for field drain. E-W linear cut for field drain, steep and flattish base. Filled by (109)
(109)	Fill of field drain [108]. Moderate to firm greyish-brown, loamy clay.

Table 1 Contexts encountered in trench 1

ii. Trench 2

Trench 2 (Plate 3) was dug in the north-west corner of the site. It measured 50m long, 1.5m wide and a depth of 0.5m, oriented SW-NE.

The topsoil (201) was lying in one area over a subsoil (202) otherwise it was directly over the undisturbed natural (203) and no archaeological features were seen during excavation. As for trench 1, there were, however, a few indications of agricultural activity, cut into the natural, here described from west to east:

- Linear field drain [204], oriented ENE – WSW, filled by (207), steep sides, flat base.
- Two NNW-SSE linear ridge and furrow [205], gradual slopes and flat base.

- Concentration of crisscrossing plough strikes [206], backfilled with topsoil (201), two E-W strikes intercepting four N-S (*Plate 4*).



Plate 3 Trench 2, general view, post-ex



Plate 4 Trench 2, plough strikes [206]

<i>Context Number</i>	<i>Description</i>
(201)	Topsoil. Moderate compaction, greyish-mid brown loamy silt.
(202)	Subsoil. Moderate to firm, yellowish-pale brown, clayey loam.
(203)	Natural. Firm, brown-orange sandy clay.
[204]	Cut for field drain. ENE-WSW linear cut for field drain, steep and flattish base. Filled by (207)
[205]	Ridge and furrow. Two NNW-SSE linear ridge and furrow, gradual slopes and flat base. (>3.25 x 0.6 x 0.03 / >2.1 x 0.5 x 0.01)
[206]	Plough strikes. Four N-S, linear plough strikes (1.4 x 0.03 / 0.8 x 0.03 / 1 x 0.1 / 1.4 x 0.15), two E-W linear plough strike (2.2 x 0.15 / 0.9 x 0.15).
(207)	Fill of field drain [204]. Moderate to firm, mid brown clayey loam.

Table 2 Contexts encountered in trench 2

iii. Trench 3

Trench 3 (*Plate 5*) was dug to the east of trench 1. It measured 49.5m long, 1.5m wide and a depth of 0.5m, oriented NNW-SSE.

Only here, the topsoil (301) was laying over a subsoil (302) over the whole of the trench. The subsoil was directly over the undisturbed natural (303) which presented a few manganese rich areas and one concentration of ferruginous stones. No archaeological features were seen during excavation. As for

trench 1 and 2, there were, however, a few indications of agricultural activity, cut into the natural, here described from west to east:

- One small plough strike
- Linear field drain [304], oriented E-W, with steep sides and flat base. Filled by (305) (*Plate 6*).



Plate 5 Trench 3, general view, post-ex



Plate 6 Trench 3, field drain [304]

<i>Context Number</i>	<i>Description</i>
(301)	Topsoil. Moderate compaction, greyish-mid brown loamy silt.
(302)	Subsoil. Moderate to firm, yellowish-pale brown, clayey loam.
(303)	Natural. Firm yellow-orange, sandy clay. Two patches of manganese flecks and one patch of ferruginous stones.
[304]	Cut for field drain. E-W linear cut for field drain, steep sides and flat base. Filled by (305).
(305)	Fill of field drain [304]. Moderate to firm, greyish brown, loamy clay.

Table 3 Contexts encountered in trench 3

iv. Trench 4

Trench 4 (*Plate 7*) was dug to the east of trench 2. It measured 48m long, 1.5m wide and a depth of 0.5m, oriented SW-NE.

The topsoil (401) was lying in one area over subsoil (402) otherwise it was directly over the undisturbed natural (403), which presented a manganese rich area. No archaeological features were seen during excavation. As for trench 1, 2, and 3 there were, however, a few indications of agricultural activity, cut into the natural, here described from west to east:

- One linear ridge and furrow [404], oriented E-W.
- Linear field drain [405], oriented NNW-SSE, with steep sides and flat base. Filled by (407).
- One linear ridge and furrow [406], oriented N-S (*Plate 8*).
- Linear field drain [409], oriented NNW-SSE.
- Linear field drain [408], oriented NNW-SSE.



Plate 7 Trench 4, general view, post-ex



Plate 8 Trench 4, plough marks [406]

<i>Context Number</i>	<i>Description</i>
(401)	Topsoil. Moderate compaction, greyish-mid brown loamy silt.
(402)	Subsoil. Moderate to firm, grey-pale brown, clayey loam.
(403)	Natural. Firm brown-orange, sandy clay. One manganese patch.
[404]	Ridge and furrow. E-W linear ridge and furrow.
[405]	Cut for field drain. NNW-SSE linear cut for field drain, steep sides and flat base. Filled by (407)
[406]	Ridge and furrow. N-S linear ridge and furrow.
(407)	Fill of field drain [405]. Firm, motley grey-mid brown, loamy clay.
[408]	Field drain. NNW-SSE linear field drain. East of [409]
[409]	Field drain. NNW-SSE linear field drain. West of [408]

Table 4 Contexts encountered in trench 4

v. Trench 5

Trench 5 (Plate 9) was dug to the east of trench 3. It measured 51m long, 1.5m wide and a depth of 0.38m, oriented NW-SE.

The topsoil (501) was laying directly over the undisturbed natural (502). As for trench 1, 2, 3, and 4, no archaeological features were seen during excavation. There were, however, a few indications of agricultural activity, cut into the natural, here described from west to east:

- Linear field drain [503], oriented E-W, with steep sides and a V-shaped base. Filled by (504).
- Plough strikes [505], oriented E-W filled with (501) (Plate 10).
- Linear plough strike or ridge and furrow [506], oriented E-W. Filled by (507).

- Linear field drain [508], oriented E-W, with steep sides and flat base. Filled by (509).



Plate 9 Trench 5, general view, post-ex



Plate 10 Trench 5, plough marks [505], [506] in background

<i>Context Number</i>	<i>Description</i>
(501)	Topsoil. Moderate compaction, dark-mid brown loamy silt.
(502)	Natural. Firm, mottled mid orange and grey, sandy clay.
[503]	Cut for field drain. E-W linear cut for field drain, steep sides and V-shaped base. Filled by (504).
(504)	Fill of field drain [503]. Firm mid grey-brown, clayey silt.
[505]	Plough strikes. E-W plough strikes, filled with (501).
[506]	Plough strike or ridge and furrow. E-W linear plough strike or ridge and furrow. Filled by (507).
(507)	Fill of plough strike or furrow [506]. Firm, pale grey-brown, sandy silt.
[508]	Cut for field drain. E-W linear cut for field drain, steep sides and flat base. Filled by (509).
(509)	Fill of field drain [508]. Firm, mid grey-brown, sandy silt.

Table 5 Contexts encountered in trench 5

vi. Trench 6

Trench 6 (Plate 11) was dug in the north-west corner of the site. It measured 48.6m long, 1.5m wide and a depth of 0.4m, oriented NE-SW.

The topsoil (601) was laying directly over the undisturbed natural (602). As for trench 1, 2, 3, 4, and 5, no archaeological features were seen during excavation. There were, however, a few indications of agricultural activity, cut into the natural, here described from west to east:

- Linear plough marks [603], oriented E-W, V-shaped in section.
- Linear field drain [604], oriented E-W, with steep sides and V-shaped base.
- Linear horseshoe ceramic pipe [605], oriented NNW-SSE, with flat separate baseplate (*Plate 12*).
- Linear field drain [606], oriented E-W, with vertical sides and flat base. Filled by (607).
- Linear ridge and furrow [608], oriented E-W.



Plate 11 Trench 6, general view, post-ex



Plate 12 Trench 6, ceramic pipe drain [605], detail

Context Number	Description
(601)	Topsoil. Moderate compaction, dark-mid brown loamy silt.
(602)	Natural. Firm, mottled orange-yellow, sandy clay with manganese flecks.
[603]	Plough marks. E-W linear plough marks, V-shaped in section.
[604]	Field drain. E-W linear field drain, steep and V-shaped base.
[605]	Ceramic pipe field drain. NNW-SSE linear horseshoe ceramic pipe with flat separate baseplate.
[606]	Cut for field drain. E-W linear cut for field drain, vertical and flat base. Filled by (607).
(607)	Fill of field drain [606]. Moderate to firm, mixed mid grey-brown sandy silt.
[608]	Ridge and furrow. E-W linear ridge and furrow.

Table 6 Contexts encountered in trench 6

vii. Trench 7

Trench 7 (Plate 13) was dug in the south-west corner of the site. It measured 49m long, 1.5m wide and a depth of 0.39m, oriented NW-SE.

The topsoil (701) was laying directly over the undisturbed natural (702). As for trench 1, 2, 3, 4, 5, and 6, no archaeological features were seen during excavation. There were, however, a few indications of agricultural activity, cut into the natural, here described from west to east:

- Linear cut for field drain [703], oriented E-W, with vertical sides and flat base. Filled by (704) and a ceramic pipe drain at its base (Plate 14).
- Modern wooden stake [711].
- Linear field drain [705], oriented E-W, with sloping sides and rounded base. Filled by (706).
- Linear plough scores or ridge and furrow [709], oriented E-W. Filled by (710).
- Linear plough scores [707], oriented E-W, with V-shaped base. Several across the trench.
- One uncut spread of charcoal (708), below (701) and above (702).



Plate 13 Trench 7, general view, post-ex



Plate 14 Trench 7, field drain [703], detail

<i>Context Number</i>	<i>Description</i>
(701)	Topsoil. Moderate compaction, dark-mid brown loamy silt.
(702)	Natural. Firm mottled orangey-yellow, sandy clay.
[703]	Cut for field drain. E-W linear cut for field drain, vertical and flat base. Filled by (704). Ceramic pipe drain at its base.
(704)	Fill of [703]. Moderate to firm, mixed light brown, sandy silt with lenses of redeposited natural.
[705]	Cut for field drain. E-W linear cut for field drain, sloping sides and rounded base. Filled by (706).
(706)	Fill of field drain [705]. Moderate to firm, mid-light grey brown, sandy silt with lenses of redeposited natural.

[707]	Plough scores. E-W linear, V-shaped plough scores. Several across the trench.
(708)	Spread of charcoal. Uncut spread of charcoal, below (701) and above (702).
[709]	Plough scores or ridge and furrow. E-W linear plough scores or ridge and furrow. Filled by (710).
(710)	Fill of plough scores or furrow [709]. Firm, pale grey-brown, sandy silt.
[711]	Stake. Modern wooden stake.

Table 7 Contexts encountered in trench 7



Figure 3 Trench location

5. Discussion

Archaeological evaluation of the land behind No7, The Paddock, did not reveal any important archaeological features but a few agricultural activity markers were recorded, consisting of field drains, plough strikes and ridge and furrow (*figure 3*).

All drains (*plates 17 - 18*), with the exception of the horseshoe ceramic drain [605], are oriented E-W, unsurprisingly as they are following the natural slope of the field. The horseshoe ceramic drain was discovered during the geophysical survey and was aligned NW-SE (Archaeological Services Durham University 2016).

The drains [104] and [304] are probably the same one, found in two occurrences. More could be connected, but considering the distance between them and the possible irregular path they might be following, it is not possible to link them with certainty. The cylindrical field drain, such as the one found in trench 7 [703], appeared in the early 19th century and were in widespread use by the 1830s (Harvey 1976).

The ploughing markers are also orientated mostly E-W (*Plate 15 - 16*). Ridge and furrow, plough strikes and scores appear to follow the natural incline of the field. In trench 5, two phases of ploughing were uncovered in close proximity, an early one [506], backfilled by a firm, pale grey-brown, sandy silt (507), in a more advance state of pedogenesis and homogenisation, compared to the more recent one [505] as indicated by the topsoil (501) backfilling it. Furthermore, after discussion with Charles Burnett, the landowner, it appears that the field has not been ploughed since it became his family property in the 1960s. This seems to indicate that the field was cultivated for a long time before it became fallow land in the second half of the 20th century.

Despite its proximity with the Roman camp of *Longovicium* and its associated *vicus* no significant archaeological features or finds were discovered during this archaeological evaluation.



Plate 15 Trench 1, plough strike [105]



Plate 16 Trench 2, plough marks [205]



Plate 17 Trench 2, field drain [204]



Plate 18 Trench 6, field drain [606], section

References

Archaeological Practice Ltd, 2016, *The Paddock, Lanchester, County Durham. Archaeological Assessment*. Unpublished report AP 50/59.

Archaeological Services Durham University, 2016 *The Paddock, Lanchester, County Durham. Geophysical Survey*. Unpublished report 4057.

British Geological Survey website, accessed on October 30th, 2017.

Harvey, N, 1976 Fields, Hedges and Ditches, *Shire Album*, 21 in McComish, J M, 2015, *A Guide to Ceramic Building Materials*, p.44.

Appendix A Context Register

<i>Context No.</i>	<i>Date</i>	<i>Trench</i>	<i>Description</i>	<i>Dimensions</i>	<i>Recorded by</i>
(101)	26/09/2017	1	Topsoil. Moderate compaction, greyish-mid brown loamy silt.	>49 x >1.5 x 0.4	AR
(102)	26/09/2017	1	Natural. Firm, orange-brown sandy clay.	>49 x >1.5 x Ø	AR
[103]	26/09/2017	1	Plough strikes. Four N-S, linear plough strikes, one E-W linear plough strike. L: 0.7, >0.4, 0.6, 0.6, 1.0 W: 0.1	1.9 x 1.4 x Ø	AR
[104]	26/09/2017	1	Plough strike and cut for field drain. E-W linear cut for field drain, steep side and flattish base, filled by (107) and E-W plough strike (1.2 x 0.1)	>1.9 x 0.25 x 0.15	AR
[105]	26/09/2017	1	Plough strikes. Two E-W linear plough strike, one deep (>1.4 x 0.14 x 0.07) and one shallow (>1 x 0.2 x 0.02).	>1.1 x >1.4 x 0.07	AR
[106]	26/09/2017	1	Ridge and furrow. Two E-W furrows separated by a ridge 3.5/3.5/2	9 x >1.5	AR
(107)	26/09/2017	1	Fill of field drain [104]. Moderate to firm greyish-brown, loamy clay.	>1.9 x 0.25 x 0.15	AR
[108]	26/09/2017	1	Cut for field drain. E-W linear cut for field drain, steep and flattish base. Filled by (109)	>1.9 x 0.25 x 0.14	AR
(109)	26/09/2017	1	Fill of field drain [108]. Moderate to firm greyish-brown, loamy clay.	>1.9 x 0.25 x 0.14	AR
(201)	27/09/2017	2	Topsoil. Moderate compaction, greyish-mid brown loamy silt.	>50 x >1.5 x 0.4	AR
(202)	27/09/2017	2	Subsoil. Moderate to firm, yellowish-pale brown, clayey loam.	5.5 x >1.5 x 0.1	AR
(203)	27/09/2017	2	Natural. Firm, brown-orange sandy clay.	>50 x >1.5 x Ø	AR
[204]	27/09/2017	2	Cut for field drain. ENE-WSW linear cut for field drain, steep and flattish base. Filled by (207)	>3.1 x 0.25 x 0.12	AR
[205]	27/09/2017	2	Ridge and furrow. Two NNW-SSE linear ridge and furrow, gradual slopes and flat base. (>3.25 x 0.6 x 0.03 / >2.1 x 0.5 x 0.01).	>2.9 x >1.5 x 0.03	AR
[206]	27/09/2017	2	Plough strikes. Four N-S, linear plough strikes (1.4 x 0.03 / 0.8 x 0.03 / 1 x 0.1 / 1.4 x 0.15), two E-W linear plough strike (2.2 x 0.15 / 0.9 x 0.15).	2.2 x 1.2	AR
(207)	27/09/2017	2	Fill of field drain [204]. Moderate to firm, mid brown clayey loam.	>3.1 x 0.25 x 0.12	AR
(301)	27/09/2017	3	Topsoil. Moderate compaction, greyish-mid brown loamy silt.	>49.5 x >1.5 x 0.3	AR
(302)	27/09/2017	3	Subsoil. Moderate to firm, yellowish-pale brown, clayey loam.	>49.5 x >1.5 x 0.2	AR
(303)	27/09/2017	3	Natural. Firm yellow-orange, sandy clay. Two patches of manganese flecks and one patch of ferruginous stones.	>49.5 x >1.5 x Ø	AR
[304]	27/09/2017	3	Cut for field drain. E-W linear cut for field drain, steep sides and flat base. Filled by (305).	>1.75 x 0.28 x 0.11	AR
(305)	27/09/2017	3	Fill of field drain [304]. Moderate to firm, greyish brown, loamy clay.	>1.75 x 0.28 x 0.11	AR
(401)	27/09/2017	4	Topsoil. Moderate compaction, greyish-mid brown loamy silt.	>48 x >1.5 x 0.4	AR

(402)	27/09/2017	4	Subsoil. Moderate to firm, grey-pale brown, clayey loam.	6 x >1.5 x 0.15	AR
(403)	27/09/2017	4	Natural. Firm brown-orange, sandy clay. One manganese patch.	>48 x >1.5 x Ø	AR
[404]	27/09/2017	4	Ridge and furrow. E-W linear ridge and furrow.	>2 x 0.4 x 0.03	AR
[405]	27/09/2017	4	Cut for field drain. NNW-SSE linear cut for field drain, steep sides and flat base. Filled by (407)	>2.4 x 0.25 x 0.22	AR
[406]	27/09/2017	4	Ridge and furrow. N-S linear ridge and furrow.	>1.2 x 0.5 x 0.14	AR
(407)	27/09/2017	4	Fill of field drain [405]. Firm, motley grey-mid brown, loamy clay.	>2.4 x 0.25 x 0.22	AR
[408]	27/09/2017	4	Field drain. NNW-SSE linear field drain. East of [409]	>2 x 0.26	AR
[409]	27/09/2017	4	Field drain. NNW-SSE linear field drain. West of [408]	>2.8 x 0.2	AR
(501)	27/09/2017	5	Topsoil. Moderate compaction, dark-mid brown loamy silt.	>51 x >1.5 x 0.38	PK
(502)	27/09/2017	5	Natural. Firm, mottled mid orange and grey, sandy clay.	>51 x >1.5 x Ø	PK
[503]	27/09/2017	5	Cut for field drain. E-W linear cut for field drain, steep sides and V-shaped base. Filled by (504).	>1.7 x 0.24 x 0.12	PK
(504)	27/09/2017	5	Fill of field drain [503]. Firm mid grey-brown, clayey silt.	>1.7 x 0.24 x 0.12	PK
[505]	27/09/2017	5	Plough strikes. E-W plough strikes, filled with (501).	-	PK
[506]	27/09/2017	5	Plough strike or ridge and furrow. E-W linear plough strike or ridge and furrow. Filled by (507).	>1.7 x 1.2	PK
(507)	27/09/2017	5	Fill of plough strike or furrow [506]. Firm, pale grey-brown, sandy silt.	>1.7 x 1.2	PK
[508]	27/09/2017	5	Cut for field drain. E-W linear cut for field drain, steep sides and flat base. Filled by (509).	>1.7 x 0.36 x 0.1	PK
(509)	27/09/2017	5	Fill of field drain [508]. Firm, mid grey-brown, sandy silt.	>1.7 x 0.36 x 0.1	PK
(601)	27/09/2017	6	Topsoil. Moderate compaction, dark-mid brown loamy silt.	>48.6 x >1.5 x 0.4	PK
(602)	27/09/2017	6	Natural. Firm, mottled orange-yellow, sandy clay with manganese flecks.	>48.6 x >1.5 x Ø	PK
[603]	27/09/2017	6	Plough marks. E-W linear plough marks, V-shaped in section.	>1.3 x 0.2 x 0.1	PK
[604]	27/09/2017	6	Field drain. E-W linear field drain, steep and V-shaped base.	>1.6 x 0.25 x 0.12	PK
[605]	27/09/2017	6	Ceramic pipe field drain. NNW-SSE linear horseshoe ceramic pipe with flat separate baseplate.	>1.5 x 0.1 x 0.09	PK
[606]	27/09/2017	6	Cut for field drain. E-W linear cut for field drain, vertical and flat base. Filled by (607).	>1.7 x 0.2 x 0.15	PK
(607)	27/09/2017	6	Fill of field drain [606]. Moderate to firm, mixed mid grey-brown sandy silt.	>1.7 x 0.2 x 0.15	PK
[608]	27/09/2017	6	Ridge and furrow. E-W linear ridge and furrow.	>1.85 x 1.3	PK
(701)	27/09/2017	7	Topsoil. Moderate compaction, dark-mid brown loamy silt.	>49 x >1.5 x 0.35	PK
(702)	27/09/2017	7	Natural. Firm mottled orangey-yellow, sandy clay.	>49 x >1.5 x Ø	PK

[703]	27/09/2017	7	Cut for field drain. E-W linear cut for field drain, vertical and flat base. Filled by (704). Ceramic pipe drain at its base.	>1.7 x 0.27 x 0.33	PK
(704)	27/09/2017	7	Fill of [703]. Moderate to firm, mixed light brown, sandy silt with lenses of redeposited natural.	>1.7 x 0.27 x 0.33	PK
[705]	27/09/2017	7	Cut for field drain. E-W linear cut for field drain, sloping sides and rounded base. Filled by (706).	>1.8 x 0.3 x 0.22	PK
(706)	27/09/2017	7	Fill of field drain [705]. Moderate to firm, mid-light grey brown, sandy silt with lenses of redeposited natural.	>1.8 x 0.3 x 0.23	PK
[707]	27/09/2017	7	Plough scores. E-W linear, V-shaped plough scores. Several across the trench.	~1.5 x 0.18 x 0.14	PK
(708)	27/09/2017	7	Spread of charcoal. Uncut spread of charcoal, below (701) and above (702).	0.69 x 0.2	PK
[709]	27/09/2017	7	Plough scores or ridge and furrow. E-W linear plough scores or ridge and furrow. Filled by (710).	~1.5 x ~0.2	PK
(710)	27/09/2017	7	Fill of plough scores or furrow [709]. Firm, pale grey-brown, sandy silt.	~1.5 x ~0.2	PK
[711]	27/09/2017	7	Stake. Modern wooden stake.	~0.1 x ~0.1	PK

Appendix B Trenches Summary

Trench No.	Orientation	Length (m)	Width (m)	Depth (m)	Topsoil	Subsoil	Natural	Features
1	NW-SE	49	1.5	0.4	Moderate compaction, greyish-mid brown loamy silt. Depth : 0.4m	-	Firm, orange-brown sandy clay.	Field drains [104], [108], plough strikes [103], [104], [105] and ridge and furrow [106].
2	SW-NE	50	1.5	0.5	Moderate compaction, greyish-mid brown loamy silt. Depth : 0.4m	Moderate to firm, yellowish-pale brown, clayey loam. Depth : 0.1m	Firm, brown-orange sandy clay.	Field drain [204], plough strikes [206] and ridge and furrow [205].
3	NNW-SSE	49.5	1.5	0.5	Moderate compaction, greyish-mid brown loamy silt. Depth : 0.3m	Moderate to firm, yellowish-pale brown, clayey loam. Depth : 0.2m	Firm yellow-orange, sandy clay. Two patches of manganese flecks and one patch of ferruginous stones.	Field drain [304].
4	SW-NE	48	1.5	0.5	Moderate compaction, greyish-mid brown loamy silt. Depth : 0.4m	Moderate to firm, grey-pale brown, clayey loam. Depth : 0.15	Firm brown-orange, sandy clay. One manganese patch.	Field drains [405], [408], [409], and ridge and furrow [404], [406].
5	NW-SE	51	1.5	0.38	Moderate compaction, dark-mid brown loamy silt. Depth : 0.38m	-	Firm, mottled mid orange and grey, sandy clay.	Field drains [503], [508], frequent NE-SW plough strikes [505], [506].
6	SW-NE	48.6	1.5	0.4	Moderate compaction, dark-mid brown loamy silt. Depth : 0.4m	-	Firm, mottled orange-yellow, sandy clay with manganese flecks.	Field drains [604], [605], [606], plough marks [603] and ridge and furrow [608].
7	NW-SE	49	1.5	0.39	Moderate compaction, dark-mid brown loamy silt. Depth : 0.35m	-	Firm mottled orangey-yellow, sandy clay.	Field drains [703], [705], plough scores [707], [709], charcoal spread (708) and modern stake [711]

Appendix C Photograph Register

<i>Image No.</i>	<i>Frame No.</i>	<i>Direction Facing</i>	<i>Date</i>	<i>Description</i>	<i>Portrait / Landscape</i>	<i>Initials</i>
001	6517	W	26/09/2017	Access road to the site, pre-ex	P	PK
002	6518	E	26/09/2017	General view of the site, pre-ex	L	PK
003	6519	SE	26/09/2017	General view of the site, pre-ex	L	PK
004	6520	S	26/09/2017	General view of the site, pre-ex	L	PK
005	6522	ESE	26/09/2017	Trench 1, general view, post-ex	P	AR
006	6525	WNW	26/09/2017	Trench 1, general view, post-ex	P	AR
007	6528	NW	26/09/2017	Trench 1, plough strike [105]	L	AR
008	6529	NW/Vert	26/09/2017	Trench 1, plough strike [105]	L	AR
009	6531	NW	26/09/2017	Trench 1, plough strike [104]	L	AR
010	6533	WNW	26/09/2017	Trench 1, plough strikes [103]	L	AR
011	6534	WNW	26/09/2017	Trench 1, plough strikes [103]	P	AR
012	6535	SSE	26/09/2017	Trench 1, plough strike [104], section	P	AR
013	6536	SSE	26/09/2017	Trench 1, plough strike [104], section	L	AR
014	6537	SSE	26/09/2017	Trench 1, plough strike [105], section	P	AR
015	6538	SSE	26/09/2017	Trench 1, plough strike [105], section	L	AR
016	6539	SE	26/09/2017	Trench 3, general view, post-ex	P	AR
017	6541	NW	26/09/2017	Trench 3, general view, post-ex	P	AR
018	6544	NW	26/09/2017	Trench 3, field drain [304]	L	AR
019	6545	NW	26/09/2017	Trench 3, field drain [304], section	P	AR
020	6546	NW	26/09/2017	Trench 3, field drain [304], section	P	AR
021	6548	E	26/09/2017	Trench 3, west facing section, detail	L	AR
022	6549	SE	27/09/2017	Trench 5, general view, post-ex	P	PK
023	6550	NE	27/09/2017	Trench 2, general view, post-ex	P	AR
024	6552	SW	27/09/2017	Trench 2, general view, post-ex	P	AR
025	6555	SW	27/09/2017	Trench 2, plough strikes [206]	P	AR
026	6557	SW	27/09/2017	Trench 2, plough marks [205]	P	AR
027	6558	NE	27/09/2017	Trench 2, plough marks [205]	L	AR
028	6560	SW	27/09/2017	Trench 2, field drain [204]	L	AR
029	6564	S/Vert	27/09/2017	Trench 2, field drain [204], detail	L	AR
030	6565	SW	27/09/2017	Trench 2, field drain [204], section	L	AR
031	6566	W	27/09/2017	Trench 5, field drain [503]	L	PK
032	6567	W	27/09/2017	Trench 5, field drain [503], section	L	PK
033	6568	NW	27/09/2017	Trench 5, plough marks [505], [506] in background	P	PK
034	6569	SW	27/09/2017	Trench 5, plough marks [506]	P	PK
035	6570	NW	27/09/2017	Trench 5, linear feature [508]	L	PK
036	6571	SW	27/09/2017	Trench 5, linear feature [508], section	P	PK
037	6572	SE	27/09/2017	Trench 7, general view, post-ex	P	PK
038	6574	NE	27/09/2017	Trench 4, general view, post-ex	P	AR
039	6575	SW	27/09/2017	Trench 4, general view, post-ex	P	AR
040	6578	SW	27/09/2017	Trench 4, field drain [408]	L	AR
041	6579	SW	27/09/2017	Trench 4, field drain [409]	L	AR
042	6581	SW	27/09/2017	Trench 4, plough marks [406]	L	AR
043	6584	NE	27/09/2017	Trench 4, plough marks [406]	L	AR

044	6585	SW	27/09/2017	Trench 4, field drain [405]	L	AR
045	6588	NE	27/09/2017	Trench 4, field drain [405]	L	AR
046	6589	W	27/09/2017	Trench 4, field drain [405], section	P	AR
047	6590	W	27/09/2017	Trench 4, field drain [405], section	P	AR
048	6591	SW	27/09/2017	Trench 4, plough marks [404]	L	AR
049	6594	NE	27/09/2017	Trench 4, plough marks [404]	L	AR
050	6595	W	27/09/2017	Trench 7, field drain [703]	P	PK
051	6596	W	27/09/2017	Trench 7, field drain [703], detail	P	PK
052	6597	W	27/09/2017	Trench 7, linear cut [705]	P	PK
053	6598	W	27/09/2017	Trench 7, linear cut [705], section	P	PK
054	6599	E	27/09/2017	Trench 7, charcoal spread (708)	L	PK
055	6600	E	27/09/2017	Trench 7, plough marks [709]	P	PK
056	6601	NE	27/09/2017	Trench 6, general view, post-ex	P	PK
057	6602	NW	27/09/2017	Trench 6, plough marks [603], section	P	PK
058	6603	SE	27/09/2017	Trench 6, field drain? [604]	P	PK
059	6604	SE	27/09/2017	Trench 6, field drain? [604], section	P	PK
060	6605	NE	27/09/2017	Trench 6, ceramic pipe drain [605]	L	PK
061	6606	S	27/09/2017	Trench 6, ceramic pipe drain [605], detail	P	PK
062	6607	NE	27/09/2017	Trench 6, field drain [606]	P	PK
063	6609	SW	27/09/2017	Trench 6, field drain [606], section	P	PK
064	6610	W	27/09/2017	Access road to the site, post-ex	L	PK

Appendix D Contact Sheets



2303 - (001).JPG



2303 - (002).JPG



2303 - (003).JPG



2303 - (004).JPG



2303 - (005).JPG



2303 - (006).JPG



2303 - (007).JPG



2303 - (008).JPG



2303 - (009).JPG



2303 - (010).JPG



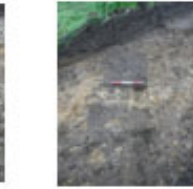
2303 - (011).JPG



2303 - (012).JPG



2303 - (013).JPG



2303 - (014).JPG



2303 - (015).JPG



2303 - (016).JPG



2303 - (017).JPG



2303 - (018).JPG



2303 - (019).JPG



2303 - (020).JPG



2303 - (021).JPG



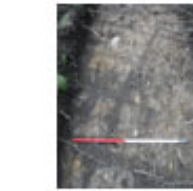
2303 - (022).JPG



2303 - (023).JPG



2303 - (024).JPG



2303 - (025).JPG



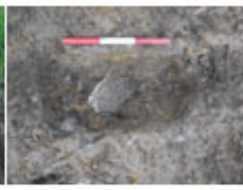
2303 - (026).JPG



2303 - (027).JPG



2303 - (028).JPG



2303 - (029).JPG



2303 - (030).JPG



2303 - (031).JPG



2303 - (032).JPG



2303 - (033).JPG



2303 - (034).JPG



2303 - (035).JPG



2303 - (036).JPG



2303 - (037).JPG



2303 - (038).JPG



2303 - (039).JPG



2303 - (040).JPG



2303 - (041).JPG



2303 - (042).JPG



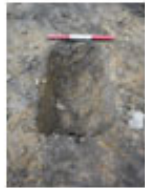
2303 - (043).JPG



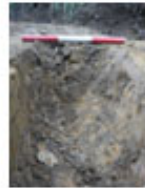
2303 - (044).JPG



2303 - (045).JPG



2303 - (046).JPG



2303 - (047).JPG



2303 - (048).JPG



2303 - (049).JPG



2303 - (050).JPG



2303 - (051).JPG



2303 - (052).JPG



2303 - (053).JPG



2303 - (054).JPG



2303 - (055).JPG



2303 - (056).JPG



2303 - (057).JPG



2303 - (058).JPG



2303 - (059).JPG



2303 - (060).JPG



2303 - (061).JPG



2303 - (062).JPG



2303 - (063).JPG



2303 - (064).JPG