

Barnbogle Castle

South Queensferry, City of Edinburgh

Historic Building Recording and Archaeological Monitoring: July 2017 – July 2018

for

Rosebery Estates Partnership

August 2018



View to the Castle from the West, overlooking Trench 2

Addyman Archaeology

Archaeology Heritage Consultancy Architecture

Addyman Archaeology

The Old Printworks, 77a Brunswick Street, Edinburgh, EH7 5HS
admin@addyman-archaeology.co.uk
0131 555 4678

Barnbogle Castle

South Queensferry, City of Edinburgh

Historic Building Recording and Archaeological Monitoring: May – July 2018

Job number 1937.00

August 2018

by Elizabeth Jones and Antoine Ruchonnet

Contents

Illustrations

Acknowledgements

Executive Summary

1.	<i>Introduction</i>	5
i.	<i>Background and previous work</i>	5
ii.	<i>Site location and setting</i>	6
2.	<i>Historical Summary</i>	8
3.	<i>Methodology</i>	9
i.	<i>Historic Building Recording</i>	9
ii.	<i>Watching Brief</i>	9
4.	<i>Historic Building Recording</i>	10
i.	<i>Ground Floor</i>	10
ii.	<i>First Floor</i>	13
iii.	<i>Second Floor</i>	15
iv.	<i>Cellar</i>	17
5.	<i>Watching Brief results</i>	21
i.	<i>Summary</i>	21
ii.	<i>Trench 1</i>	22
iii.	<i>Trench 2</i>	25
6.	<i>Discussion</i>	29
Appendix A	<i>Context Register</i>	30
Appendix B	<i>Photograph Register</i>	32
Appendix C	<i>Contact Sheets</i>	38
Appendix D	<i>Floor plans of Barnbogle Castle</i>	46
Appendix E	<i>DES Entry</i>	47

Illustrations

List of Figures

Figure 1 Barnbogle Castle Location	7
Figure 2 Extract from First Edition Ordnance Survey Linlithgowshire sheet 3 survey date 1854-55 published 1856 © NLS	8
Figure 3 Extract from First Edition Ordnance Survey Linlithgow sheet 111.14 survey date 1854 published 1856 © NLS	8
Figure 4 Extract from Second Edition Ordnance Survey Linlithgowshire 003.14 publication date 1896 revised 1895 © NLS	9
Figure 5 Trench Location	10
Figure 6 Sketch section showing phasing on west wall of furnace room in the cellar	19
Figure 7 Features Location	22
Figure 8 Plan of Drain [011]	24
Figure 9 South facing Section of Drain [011]	24
Figure 10 Plan of Features [023] and [024] and Bedrock [025]	27
Figure 11 South facing Section of Features [023] and [024] and Bedrock [025]	27
Figure 12 Plan and Section of Castle Foundations	29

List of Plates

Plate 1 Blocked fireplace in kitchen	11
Plate 2 Kitchen press	11
Plate 3 Hoist in hallway	11
Plate 4 Bells on north wall of hall	11
Plate 5 Telephone affixed to wooden shutters in hall	12
Plate 6 Telephone affixed to south wall of hall	12
Plate 7 Blocked fireplace on west wall of archive room	12
Plate 8 Window on west wall of archive room	12
Plate 9 Fireplace in north-east corner of bedroom	13
Plate 10 Window on west wall of bedroom	13
Plate 11 Window on south wall of urinal room	14
Plate 12 Urinal on west wall	14
Plate 13 Electrical cabinets	14
Plate 14 Fireplace on east wall of housekeeping room	14
Plate 15 Taps and concealed sink in windows of housekeeping room	15
Plate 16 Bell on west wall of housekeeping room	15
Plate 17 Exposed masonry behind wall of second floor WC	16
Plate 18 Recessed sink in second floor WC	16
Plate 19 Window in south wall of bathroom second floor	16
Plate 20 Marble bath and fittings second floor	16
Plate 21 Handle to let in salt water	17
Plate 22 Handles on bath: hot, waste and cold	17
Plate 23 Seawater pump in cellar	18
Plate 24 View along passage from coal cellar; door to furnace room at far end and seawater pump opposite	18
Plate 25 View along north wall of furnace room, with blocking at west end and furnace in foreground	18
Plate 26 West wall of furnace room, with evidence for medieval castle wall on left and steps on right	18

Plate 27 North and east walls of furnace room; showing early masonry against cut bedrock and later infilling of opening	20
Plate 28 East wall of furnace room; line of medieval masonry is in line with scale; infilling to the right	20
Plate 29 Larder from doorway	20
Plate 30 Looking west along passage with larder door on left; brick infill on either side of door	20
Plate 31 Coal cellar looking south-west	21
Plate 32 Store on east wall of coal cellar	21
Plate 33 N room off coal cellar; showing change in masonry on N wall and E wall	21
Plate 34 Drain [007] and Cut in Bedrock [006]	23
Plate 35 Drain [007]	23
Plate 36 Drain [011]	23
Plate 37 Drain [011] and overlaying Stratigraphy	23
Plate 38 Drain [011], Detail	25
Plate 39 Drain [011], Internal View, Looking East	25
Plate 40 Septic Tank trench section	25
Plate 41 Large Stones from (013)	25
Plate 42 North facing Section of West of Trench 2	26
Plate 43 North facing Section of Trench 2 with Levelling Deposit (017)	26
Plate 44 Bedrock [025] with recently installed service	26
Plate 45 Bedrock [025]	26
Plate 46 Feature [023], [024] in Background	28
Plate 47 Feature [023], [024] in Background	28
Plate 48 Castle Foundations	28
Plate 49 Castle Foundations and Elevation	28

Unless otherwise stated, all content is the copyright of Simpson & Brown *Architects* with Addyman Archaeology.

Acknowledgements

Addyman Archaeology is grateful to Lady Jane Kaplan for providing access for the Historic Building Recording and to the contractors of Thomas Johnstone Ltd for their assistance during the monitoring. The fieldwork was undertaken by Liz Jones and Antoine Ruchonnet.

Barnbogle Castle

South Queensferry, City of Edinburgh

Historic Building Recording and Archaeological Monitoring

Executive Summary

Addyman Archaeology undertook Historic Building Recording and archaeological monitoring at Barnbogle Castle, South Queensferry as part of a programme of works to restore the castle. The Castle is a Category A Listed Building. The first house at Barnbogle was built in the 13th century. The present castle was originally built in the 17th century and was rebuilt in 1881 by the 5th Earl of Rosebery following an accidental explosion where it was partly blown up.

The Historic Building Recording was undertaken in July 2018 and focussed on those areas subject to proposed alterations, including areas of the ground, first and second floors; a full photographic record was also made of the cellar, where parts of the early castle wall survive. Evidence for at least three phases of construction was recorded in the Furnace Room of the cellar, which may date to the medieval period. The north wall of this cellar is rock-cut, with later rebuilding and blocking in stone and the 19th century cellar vaulting in brick.

The archaeological monitoring was undertaken between May and July 2018 and comprised a series of monitoring visits to inspect excavated trenches. Two trenches were excavated across the Castle grounds on the terrace and the landscaped gardens to the south. The topsoil generally contained mortar and occasional rubble, presumably derived from demolition of the 17th century castle.

A drain and two linear features appear to have been associated with the original building and a late 19th century ceramic sewer drain was partly reused to run the future sewer line from the Castle to the new septic tank to the south-east. The Castle is built directly over the bedrock, which has been terraced in some places, although it was unclear as to whether this was undertaken during the original medieval construction or later rebuildings.

1. Introduction

i. Background and previous work

Addyman Archaeology undertook Historic Building Recording and monitoring during groundworks at Barnbogle Castle, South Queensferry, Edinburgh, as part of a programme of works to restore and convert the castle for use as an events venue. The work was commissioned by Simpson & Brown Architects, on behalf of Rosebery Estates Partnership. The castle is a Category A Listed Building (LB 5548). The work was undertaken according to a Written Scheme of Investigation submitted and approved by the City of Edinburgh Council Archaeology Service (CECAS), in response to the archaeological condition placed on the planning application (planning reference: 17/01399/FUL).

The Historic Building Recording photographic survey was undertaken on 4th July 2017, with additional recording undertaken during the monitoring phase, of areas subject to alterations. Monitoring of groundworks was undertaken between May and July 2018.

A record of the archaeological work (*OASIS ID: addymanal-326827*) has been deposited with the Online Access to the Index of Archaeological Investigations (OASIS) website hosted by the Archaeological Data Service and with *Discovery and Excavation in Scotland* (DES), the annual publication of fieldwork by Archaeology Scotland (*Appendix E*).

This report contains maps reproduced under licence by permission of the Trustees of the National Library of Scotland (NLS).

ii. Site location and setting

Barnbogle Castle lies within the Dalmeny Estate. It is located between Cramond and South Queensferry on the south shore of the Firth of Forth (*Figure 1*; NT16868 78530). The castle is located on the waterfront and is protected by recently upgraded sea defences. The area immediately around the castle is level with a decorative sandstone balustrade. Beyond this to the south and west lies an area of lawn bordered by mature trees; directly to the north and east are the shores of the Firth of Forth.

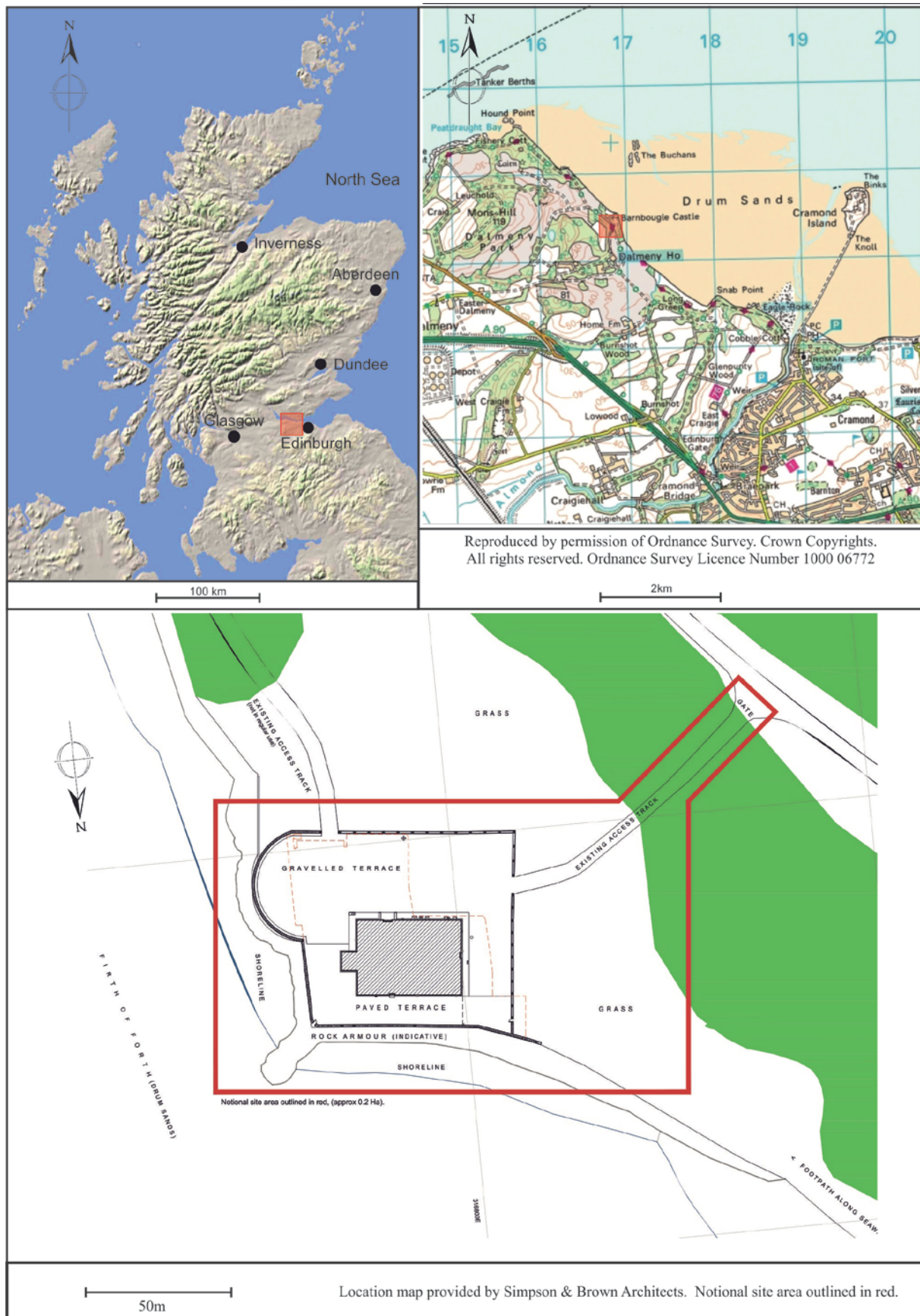


Figure 1 Barnboug Castle Location

2. Historical Summary

The first house at Barnbogle was built in the 13th century by the Mowbray family, Norman lords who came to Scotland with William the Conqueror. The present castle was originally built in the 17th century and was rebuilt in 1881 by the 5th Earl of Rosebery following an accidental explosion where it was partly blown up. The castle was primarily designed as a private library for the Earl, who later became Prime Minister.

Barnbogle Castle appears on early maps: Barnbugal on *Lothian and Linlithquo* map from Blaeu Atlas of Scotland (1654) and Barnbugle on William Roy's *Military Survey of Scotland* (1747-55). Both maps, however present no detail of the Castle.

The First Edition Ordnance Survey maps of 1856 (*Figure 2*) shows the location of the original Barnbogle Castle, with the larger scale map (*Figure 3*) showing the remains in detail. Two square towers are depicted: the west tower is in a more ruinous state and the east tower has an additional small square structure at its south-east corner. The towers are linked by a broad wall. Both the first edition maps show the ruins lying within an almost square enclosure bounded on the south and west by a wall and to the north and east by the shore. Mature trees are depicted on both maps within the enclosure.

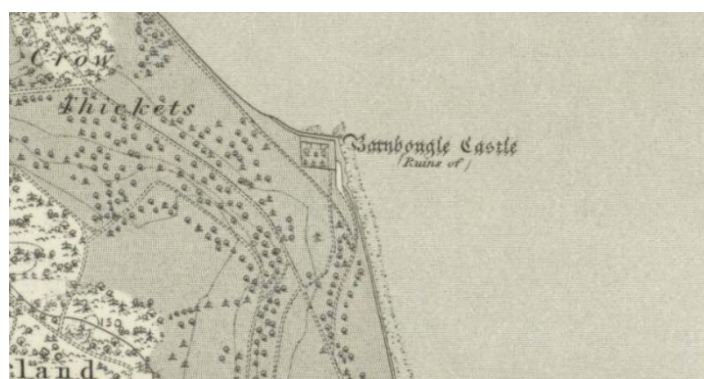


Figure 2 Extract from First Edition Ordnance Survey Linlithgowshire sheet 3 survey date 1854-55 published 1856 © NLS



Figure 3 Extract from First Edition Ordnance Linlithgow sheet 111.14 survey date 1854 published 1856 © NLS

The second edition Ordnance Survey map of 1895 (*Figure 4*) shows that the ruins have been removed and replaced by a new larger single structure, which is still standing today. The trees have been cut back and now a path is running from the road to the Castle, the access road still in use today.

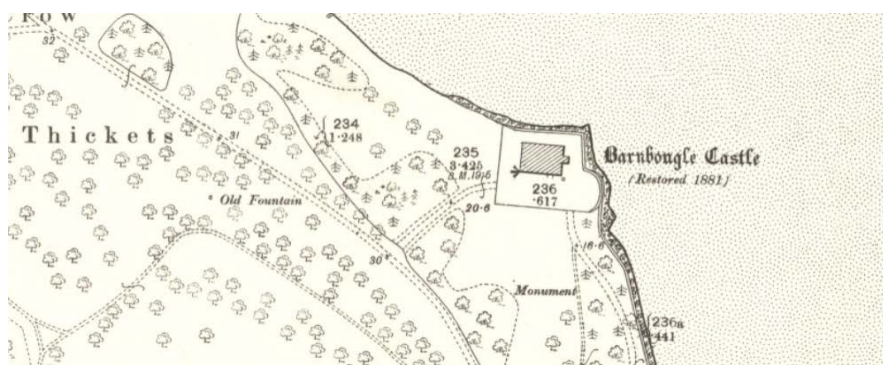


Figure 4 Extract from Second Edition Ordnance Survey Linlithgowshire 003.14 publication date 1896 revised 1895 © NLS

3. Methodology

i. Historic Building Recording

The works required to convert the castle from its current domestic use to an events venue have been designed to have as little impact as possible on the structure of the standing building. However removal of modern finishes is necessary, which will inevitably reveal historic fabric of the 19th century castle; it is also possible that fabric may survive from the earlier castle thought to date to the 13th century. In order to record any early fabric exposed, a Level 1 photographic survey was carried out, before and during stripping out works. The survey included a complete photographic survey of the areas of the castle, which will be significantly impacted upon by the building works. The photographs were indicated on a plan and contact sheets of all photographs are recorded in *Appendix C*. Any evidence of the early castle was to be drawn in plan/elevation as appropriate and a summary report prepared to include a map regression and description of the works.

ii. Watching Brief

All ground breaking was conducted by the contractors and inspected before backfilling. Any archaeological features were cleaned and recorded according to Addyman Archaeology standard procedures. Addyman Archaeology adheres to the CIfA's principal codes of conduct.

All contexts were given individual numbers and recorded on pro-forma record sheets. Hand drawn plans and sections were recorded where appropriate and digital photographs were taken. Survey drawings were made in order to place the site within National Grid co-ordinates.

Two trenches were excavated across the Castle grounds on the terrace surrounding the Castle and the landscaped gardens to the south (see *Figure 5*). Trench 1 was roughly orientated north-west to south east; Trench 2 ran approximately east to west. The trenches were excavated in a number of sections and were inspected over six site visits. The north-western section of Trench 1 along the sea wall was not inspected as the area was already backfilled when we arrived on site. However, considering the relative consistency of the stratigraphy on each side of the un-inspected section, it can be assumed that no major features might have survived in this section.

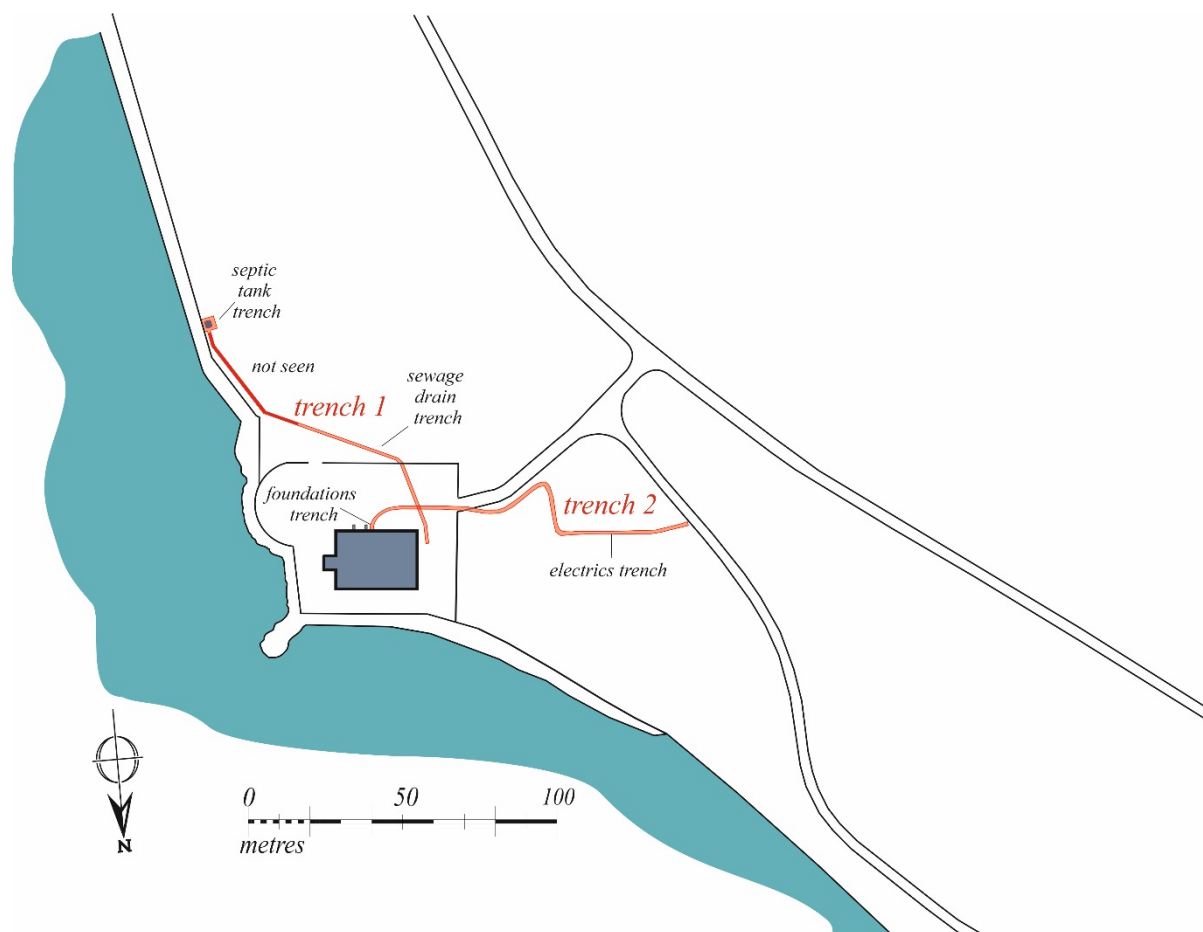


Figure 5 Trench Location

4. Historic Building Recording

The Historic Building Recording was undertaken on the Ground, First and Second floors and within the Cellar. The recording was focused on those areas subject to alteration and therefore a full record of all the rooms was not the intention. Plans of the areas referred to can be found in *Appendix D*.

i. Ground Floor

The areas subject to alteration are on the west and south sides of the ground floor and include works to the WC, hall, kitchen, archive room and bedroom.

The downstairs WC was disused and the outer wall had already been re-plastered at the time of the survey. Electrical cabinets were located on the west wall. The south wall had a wooden panelled window recess, with a small sash and case window, two over two.

A blocked fireplace was situated on the east wall of the kitchen (*Plate 1*) with a lined wooden press to the right (*Plate 2*); a modern kitchen unit was on the south wall in front of the window opening. The dumb waiter, located outside the kitchen (*Plate 3*) is to be replaced by a cupboard. The press was removed and the fireplace partially unblocked during the later monitoring.



Plate 1 Blocked fireplace in kitchen



Plate 2 Kitchen press



Plate 3 Hoist in hallway



Plate 4 Bells on north wall of hall

Within the hallway servants bells are installed on the north wall, which are to be retained *in situ* (Plate 4) and at the west end of the corridor are two telephones, both to be removed (Plate 5 and Plate 6).



Plate 5 Telephone affixed to wooden shutters in hall



Plate 6 Telephone affixed to south wall of hall

To the west of the kitchen is the archive room. This contained windows on the south and east walls and a modern blocked fireplace on the east wall (*Plate 7*). The window recess was lined with white painted wooden panelling with wooden shutters (*Plate 8*). The room was filled with removed wooden panels and is currently used for storage.



Plate 7 Blocked fireplace on west wall of archive room



Plate 8 Window on west wall of archive room

In the north-west corner of the ground floor lies a bedroom, with a small cupboard and shower room off the adjoining passage. The cupboard had been repainted and a new shelf installed. There was a wall light on the rear wall into the lobby behind, which gives access to the west door. The shower room was painted yellow, with surviving wooden panelling on the rear west wall behind the cistern. To the right was the wooden panelled window recess, with a small sash and case window, two over two. The window is the same style as the WC in the entrance lobby. Both the panelling and the window were painted white.

The bedroom was wallpapered and lit by a chandelier. There was a fireplace in the north-east corner of the room (*Plate 9*); this was relatively late, constructed of yellow firebricks with a wooden surround. The windows were recessed and had wooden panelling beneath, with wooden shutters (*Plate 10*). Monitoring in May 2018 revealed the ceiling joists and floorboards above, following opening up of part of the ceiling.



Plate 9 Fireplace in north-east corner of bedroom



Plate 10 Window on west wall of bedroom

ii. First Floor

On the first floor the only areas affected by redevelopment were the urinal to the east of the staircase and the housekeeping room adjacent.

The urinal room comprised two small compartments separated by a timber door. The inner room was wallpapered with a yellow and blue tile pattern and had a recessed wooden panelled window at the south wall, identical to the WC on the Ground floor (*Plate 11*). The ceramic urinal was on the west wall, with traces of the plumbing visible in the tiles. There was a lever comprising a metal bar held by a hand directly above the urinal affixed by screws; the lever was marked with 'SHUT' and 'OPEN' (*Plate 12*).



Plate 11 Window on south wall of urinal room



Plate 12 Urinal on west wall

The outer compartment had been partly stripped, with the flooring removed; there were electrical cabinets installed on the west wall (*Plate 13*). The urinals were stripped out as part of the renovations and the ceilings partly opened up during this process. The ceilings were of lath and plaster and exposed the wooden ceiling joists above.

The housekeeping room was to the east. It was wallpapered, with a fireplace on the east wall and a window on the south. The fireplace was open and contained a marble fire surround with a cast iron grate (*Plate 14*). The window recess on the south wall had wooden panelling with a boxed in sink and a set of brass taps on the adjacent wall (*Plate 15*), presumably fed by the plumbing to the urinal next door. There was a single bell on the west wall (*Plate 16*).



Plate 13 Electrical cabinets



Plate 14 Fireplace on east wall of housekeeping room



Plate 15 Taps and concealed sink in windows of housekeeping room



Plate 16 Bell on west wall of housekeeping room

A lift was installed as part of the renovations but as this was between floors it did not require any excavation; the exposed floorboards were recorded. A lintel was exposed behind the wall plaster during the renovations at the south end of the west wall during the renovations; this is evidence for a former opening through to the urinal to the west. The lintel was concrete so was clearly a late replacement.

iii. Second Floor

The rooms recorded on the second floor subject to alterations were the WC and adjacent bathroom. The WC room was directly above those on the ground and first floors. It had been similarly stripped at the floor and the lower part of the window, which was the same as those on the other floors. The panelling and tiles had been partly stripped above the window, exposing the masonry behind (*Plate 17*).

Both compartments were papered with wallpaper patterned with yellow and blue tiles as in the urinal room on the first floor, with an identical ceramic urinal on the west wall. There was a recess in the north-east corner of the room, which was panelled below and tiled above, with a fitted sink within (*Plate 18*). There was a slate surround to the ceramic sink, which was fitted with a plug and fed by three taps above. A cupboard was below the sink. Above the sink was a 'laylight', as marked on the drawings.



Plate 17 Exposed masonry behind wall of second floor WC



Plate 18 Recessed sink in second floor WC

To the east of the WC was a bathroom, this had a window on the south wall and a raised wooden plinth on the west side with fitted marble bath and a modern toilet adjacent. The window was recessed and wooden panelled to the floor with wooden shutters (*Plate 19*). The whole room was wallpapered in the same yellow and blue tiled pattern, with wooden skirting; the floor coverings had been removed and exposed wooden floorboards.

The bath was c2m long and c0.6m deep and was sloped at the south (tap) end (*Plate 20*). There was a handle on the wall marked 'PULL' within a circular metal plate marked with 'OPEN', 'SHUT' AND 'SALT WATER' (*Plate 21*); the owner confirmed that the bath was fed by water from the sea. There were three handles at the end of the bath, made by 'STEWART & RAE, EDINBURGH'. From left to right the handles are marked 'HOT'; 'WASTE' and 'COLD' (*Plate 22*). The hot and cold taps are within a circular metal plate marked with 'OPEN' and 'SHUT'; the waste plug is a handle that is pulled upwards to let the water drain.



Plate 19 Window in south wall of bathroom second floor



Plate 20 Marble bath and fittings second floor



Plate 21 Handle to let in salt water

Plate 22 Handles on bath: hot, waste and cold

iv. Cellar

The proposals for the cellar are for the installation of a tank within the furnace room. All accessible areas of the cellar were recorded through the photographic survey. Access to the cellar is via a series of stairs, at the base of which the seawater pump is located (*Plate 23*). To the west is a passage leading to the coal cellar and a larder (*Plate 24*); opposite is a door leading through a short passage to the furnace room. The cellar is stone built with a brick barrel-vaulted roof.

The earliest (accessible) cellar appears to be what is now the furnace room. The north wall of this room has been formed out of cut bedrock, with later (19th century) brick barrel-vaulting built on top (*Plate 25*). There is a brick furnace against the south wall of the room.

Evidence for the early castle wall can be seen at the west end of the room (*Figure 6; plate 26*). This shows a stone springing arch, which presumably would have originally extended across to meet the cut bedrock wall on the north. This has been latterly truncated and the opening in the arch filled in with stone, probably at the time of the building of the 17th century castle. To the north of the arch is further walling, which extends to a series of steps, leading into a further cellar room (N room, see plans in *Appendix D*), again assumed to be associated with the 17th century castle. The third phase sees the 17th century wall truncated at the top in order to insert the brick barrel-vaulting of the 19th century castle. At this point access into the adjacent cellar room was blocked with stone. Further evidence of the modifications is evident on the east wall of the furnace room, where traces of an early wall may survive against the cut bedrock but the opening has been infilled with stone and much later, brick (*Plate 27* and *Plate 28*).



Plate 23 Seawater pump in cellar



Plate 24 View along passage from coal cellar; door to furnace room at far end and seawater pump opposite



Plate 25 View along north wall of furnace room, with blocking at west end and furnace in foreground



Plate 26 West wall of furnace room, with evidence for medieval castle wall on left and steps on right

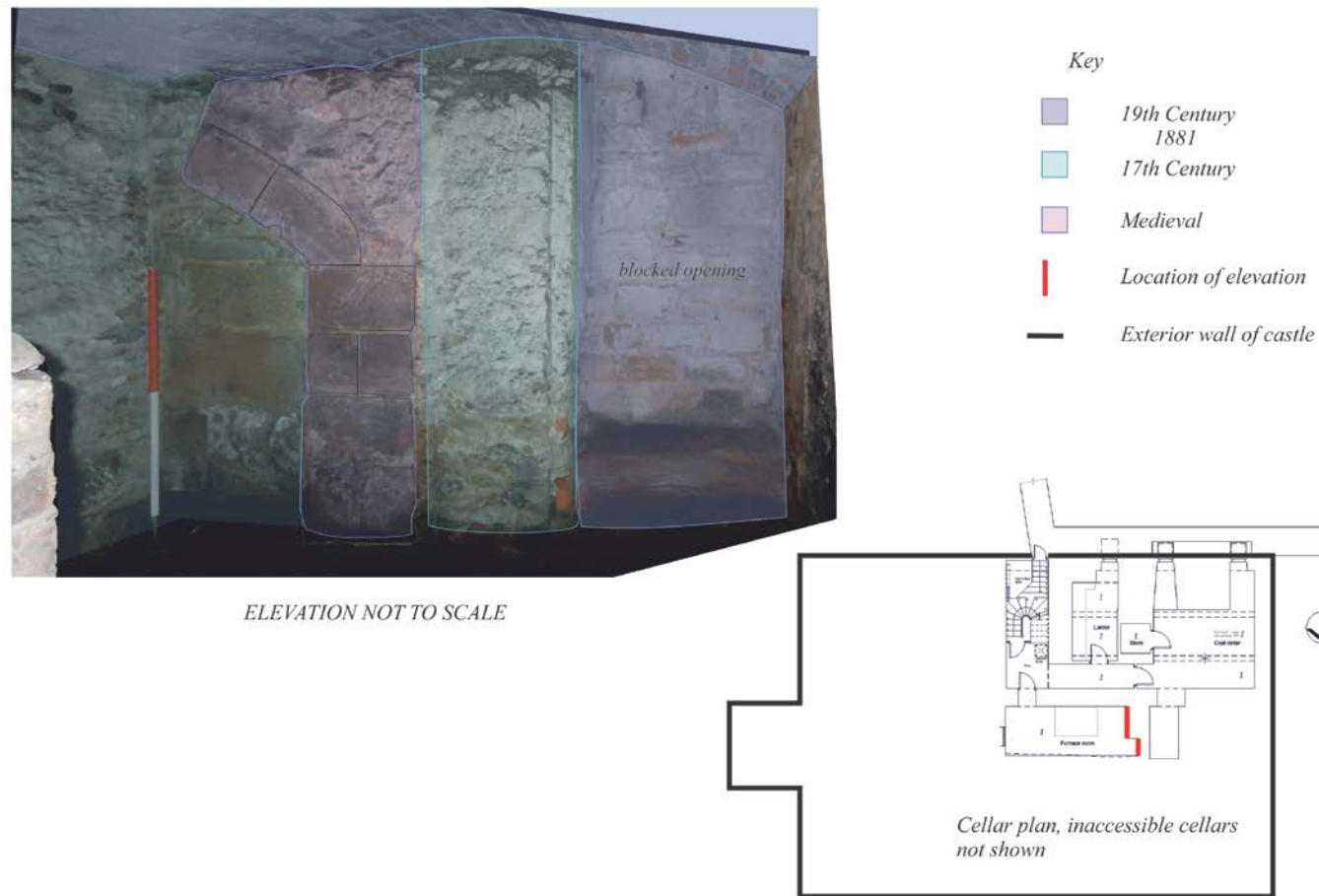


Figure 6 Sketch section showing phasing on west wall of furnace room in the cellar



Plate 27 North and east walls of furnace room; showing early masonry against cut bedrock and later infilling of opening



Plate 28 East wall of furnace room; line of medieval masonry is in line with scale; infilling to the right

The larder is whitewashed and contains a stone bench around the east wall, with a wooden shelf above and a freestanding table (Plate 29). On the outside wall, there is evidence that this room was originally open and the doorway is a later insertion. There is brickwork either side of the doorway; this has been whitewashed along with the rest of the room and the corridor (Plate 30).

The coal cellar is at the west end of the accessible internal cellars. There is a cast iron pillar in the centre of the room and two coal chutes on the south side (Plate 31). A store is off the east wall; this shows some modification as the opening to the larder appears to have been bricked up and the doorway has been reduced (Plate 32). The north wall of the coal cellar leads to the N room (see above). There is a blocked entrance in the east wall which formerly led into the furnace room (Plate 33). The original wall is cut into bedrock and the opening blocked with masonry.



Plate 29 Larder from doorway



Plate 30 Looking west along passage with larder door on left; brick infill on either side of door



Plate 31 Coal cellar looking south-west



Plate 32 Store on east wall of coal cellar



Plate 33 N room off coal cellar; showing change in masonry on N wall and E wall

5. Watching Brief results

i. Summary

Generally, the area surrounding Barnbogle Castle appears to have been heavily terraced upon the 1881 rebuild of the then ruinous 17th century building. The topsoil contains lumps of mortar, sometimes still on rubble, indicating that the area was backfilled, partly with demolition from the original building, too damaged for renovation. A drain [011] and two linear features [023] and [024] appear to have been associated with the original building (see *Figure 7*). A ceramic sewer drain from the late 19th century [007] has been partly reused to run the future sewer line from the Castle to the new septic tank to the south-east. The Castle is built directly over the bedrock, which has been terraced in some places [025]; there is evidence that the terrace balustrade on the seaward side pre-dates the 1881 rebuilding, indicating that the terracing of the natural slope is also earlier.

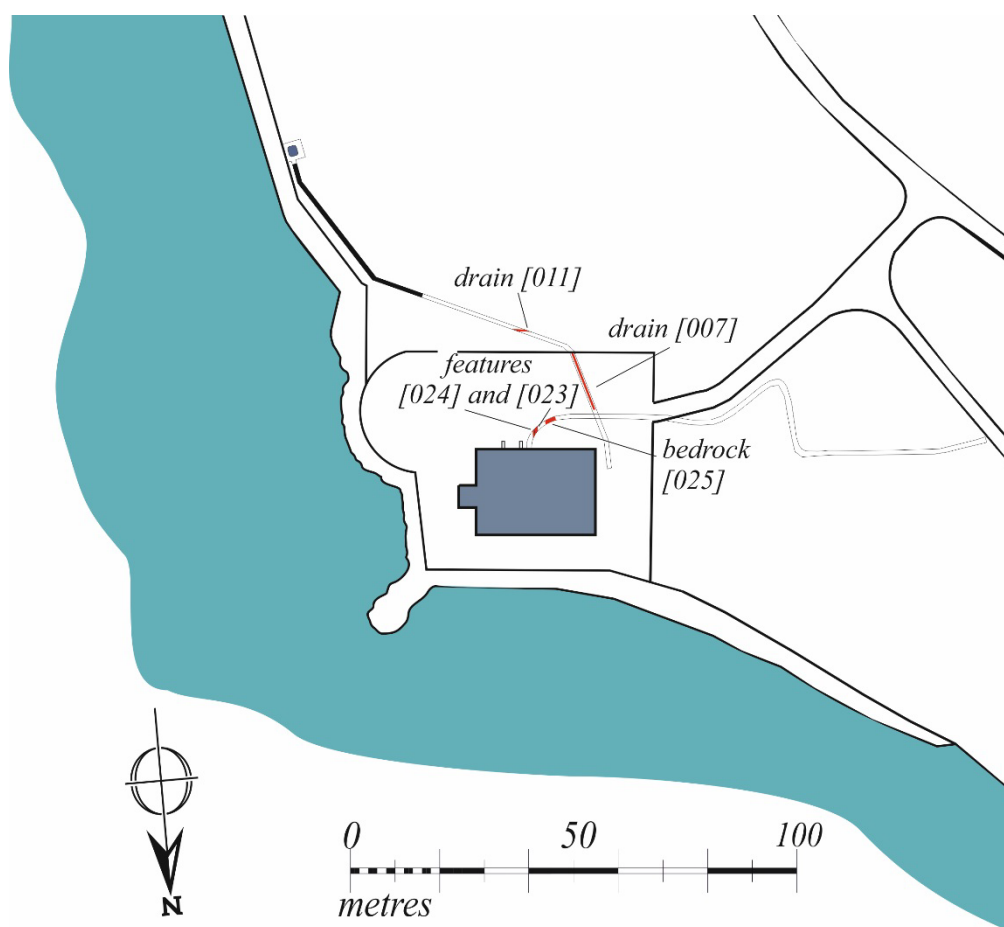


Figure 7 Features Location

ii. Trench 1

Trench 1 is roughly running north-south is composed of three segments inspected on two days. First, the northern extent west of the Castle was excavated (inspected 08.05.18) and then the trench was extended into the landscaped area south of the terrace. The excavation along the sea wall for the installation of the new septic tank to the south was also done at the same time (inspected 24.05.18).

Unfortunately, the section connecting the two ends (in black on Figure 7) was excavated and subsequently backfilled without inspection as we were not given any notice of the works undertaken. No significant features or finds relating to the original use of the Castle were found.

In the terrace area surrounding the Castle, a linear salt-glazed ceramic sewer drain [007] was found overlying the bedrock; cutting it on occasion [006] (see Plate 34 and Plate 35). Considering the late 19th century date of such a drain, it is most likely that this sewer line was installed during the renovation of the building. Over the drain were a series of three levelling backfills, patches of clean sand directly over the bedrock (004), and two loose sandy deposits with high frequency of shells (003) and (002). The whole terrace is covered with a gravel surface (001).



Plate 34 Drain [007] and Cut in Bedrock [006]



Plate 35 Drain [007]

The trench extended to the south beyond the baluster encircling the terrace and traversed the landscaped area. Only one feature was discovered in this section: a vertical sided, stone lined and capped drain, comprising sandstone squared blocks bonded with beige and grey lime mortar over a flat stone base [011]. The drain ran east-west and was filled up to a fifth of its depth by waterborne sand and silt (012) (see *Figure 8* and *Figure 9*). The mortar bounding drain [011] is a tan earth-lime mortar, with shell inclusions and fine sand aggregate, dating to the late medieval period. This drain predates the 1881 renovation of the Castle and was most likely part of the 17th century castle or earlier. No cut was visible. The landscaped garden area is composed of turf (008), overlying topsoil (009) which contains a high frequency of shells and some mortar lumps. This seals slightly lighter brown subsoil, also containing a high frequency of shells and occasional mortar lumps (see *Plate 36*. to *Plate 39*).



Plate 36 Drain [011]



Plate 37 Drain [011] and overlaying Stratigraphy

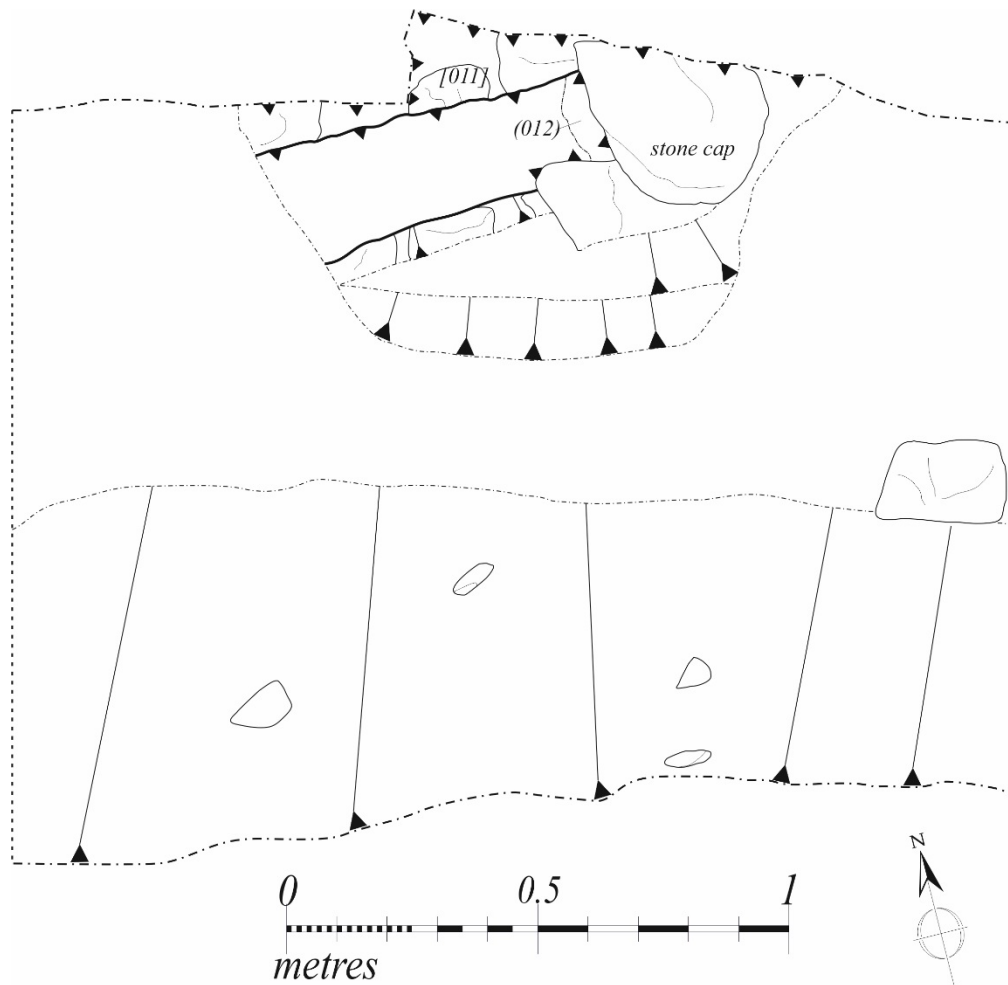


Figure 8 Plan of Drain [011]

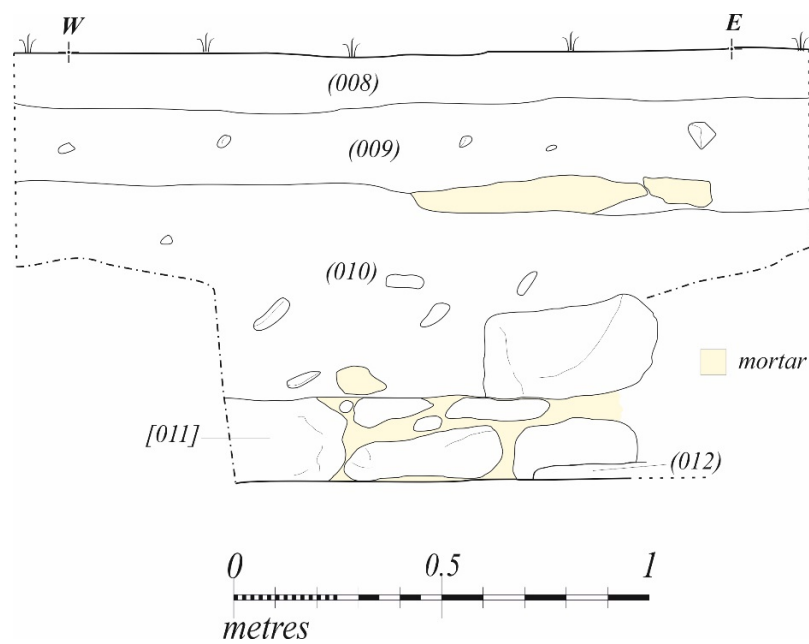


Figure 9 South facing Section of Drain [011]



Plate 38 Drain [011], Detail



Plate 39 Drain [011], Internal View, Looking East

At the south end of Trench 1 a roughly 4m² trench for the installation of a new septic tank against the sea wall was inspected. The whole area presented no archaeological features. The natural sands (014) underlay topsoil (013) with frequent rubble, mortar lumps, shells, and a few large stones (see *Plate 40* and *Plate 41*). It is likely that this is the backfill of the construction cut for the construction of the sea wall, composed partly of the demolition from the 17th century building.



Plate 40 Septic Tank trench section



Plate 41 Large Stones from (013)

iii. Trench 2

The trench roughly running east-west is composed of three segments inspected on two days. First the west extent through the landscaped area was excavated (West) along with a sounding against the Castle to find the foundations (East) (inspected 20.07.18). Finally, the trench was completely excavated through the terrace (Centre) (inspected 27.07.18).

The trench section west of the Castle terrace did not reveal any significant archaeological features. Artefact sterile topsoil (015) overlay yellow natural sand (016) (see *Plate 42*). This configuration was noted all along the western part of Trench 2; the only variation was found near the entrance of the terrace, where the excavation approached the access road, where a levelling deposit (017) was found (see *Plate 43*). This deposit contained small lumps of mortar, shells and small stones, most likely laid at the same time as the renovation, using the same material as for the terracing, finely crushed to provide a stable base for the access path.



Plate 42 North facing Section of West of Trench 2



Plate 43 North facing Section of Trench 2 with Levelling Deposit (017)

The central section of the Trench 2, running across the Castle terrace, revealed the cut into the bedrock that was made to level the terrace for the construction of the building [025]. It is unclear when the bedrock was terraced and only the west end of the bedrock had been treated that way. A recently installed service trench cut the bedrock on the west side (see *Plate 44 and Plate 45*).

Two built structures were also recorded, side by side, within the trench. One made of squared sandstone and bonded by grey lime mortar [023], the other of brick and grey lime mortar [024] (see *Figure 10 and Figure 11*). Their function and date is unclear, it seems likely, however, that they are wall foundations related to the 17th century rebuild (see *Plate 46 and Plate 47*).



Plate 44 Bedrock [025] with recently installed service



Plate 45 Bedrock [025]

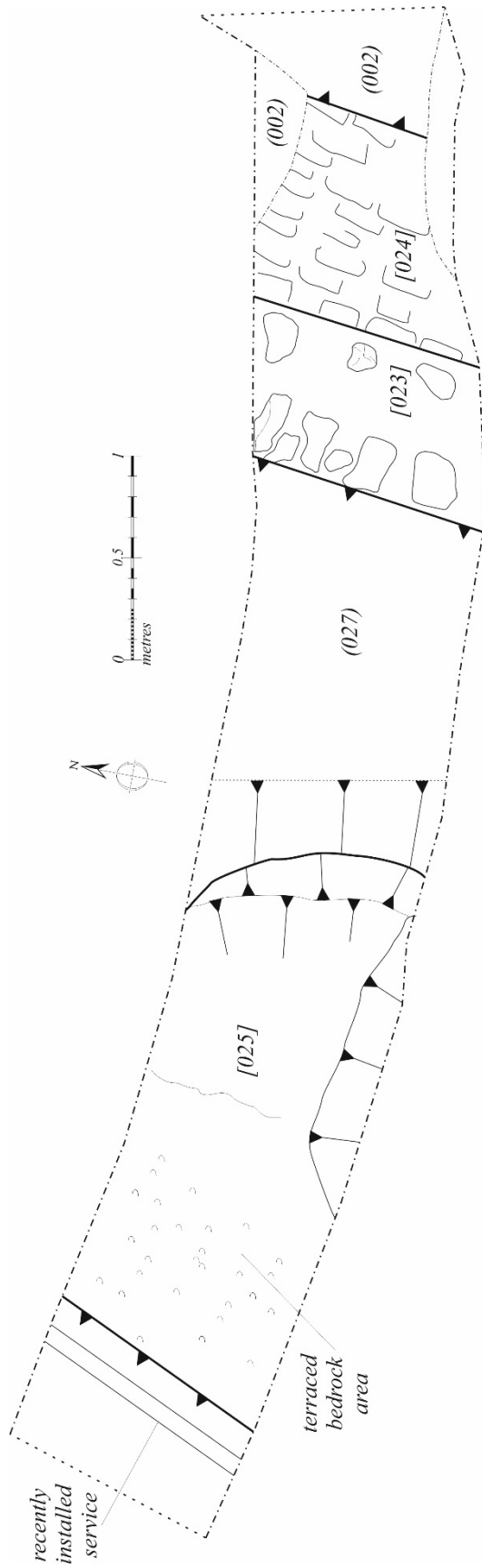


Figure 10 Plan of Features [023] and [024] and Bedrock [025]

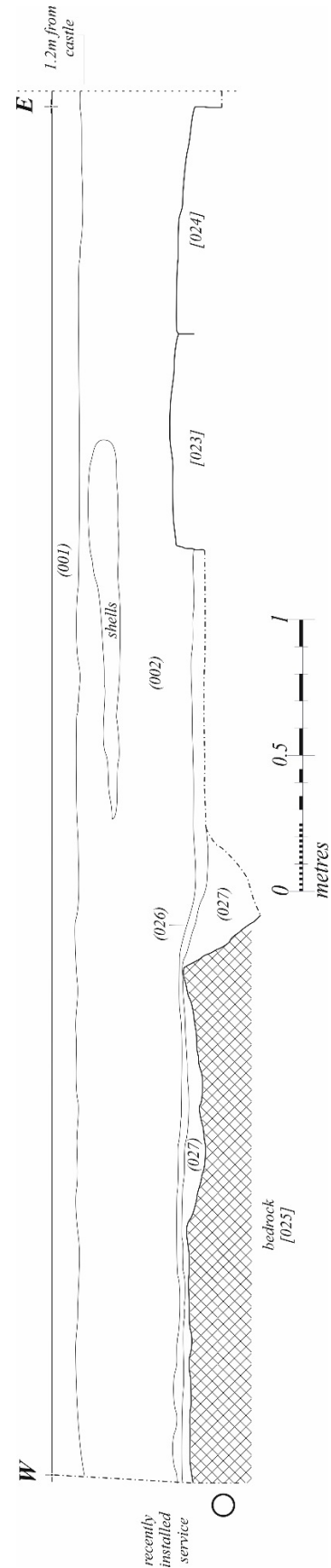


Figure 11 South facing Section of Features [023] and [024] and Bedrock [025]



Plate 46 Feature [023], [024] in Background



Plate 47 Feature [023], [024] in Background

Trench 2 extended to the south elevation of the building and exposed the foundations. The Castle is built directly upon the bedrock, which has been terraced (see *Figure 12*). A layer of mortar was noted between the lowest course of the building and the bedrock, to cement the squared stone directly on the bedrock table.

A course of flagstones [018] is surrounding the periphery of the Castle walls, over a sandy bedding (020), which overlays a sand and silt deposit, presenting occasional shells, brick fragments and small stones. Two service pipes, one metal [021] and one ceramic [022] were noted, most likely installed during the 1881 rebuild of the Castle.



Plate 48 Castle Foundations



Plate 49 Castle Foundations and Elevation

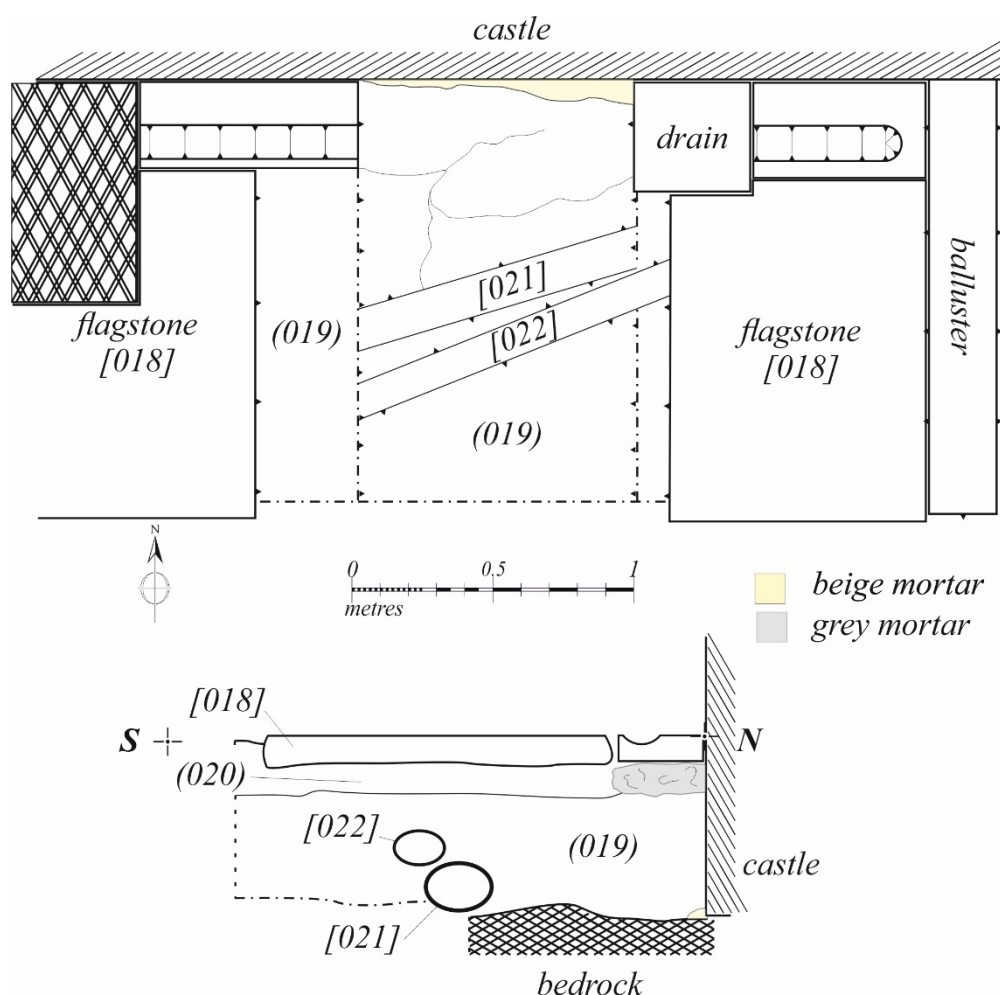


Figure 12 Plan and Section of Castle Foundations

6. Discussion

The Historic Building Recording has recorded some of the historic interiors of the 19th century castle subject to alterations. In particular the seawater pump and associated bathroom fixtures are of historic interest along with the telephones in the hall; the seawater pump remains *in situ* (although no longer operational) and the second floor bathroom is to be restored. The telephones will be reinstalled in the entrance hall. The evidence in the cellar suggests that remnants of the medieval castle survive within the fabric of the existing building. Several phases were noted within the furnace room, which may be associated with the 17th century and later 19th century rebuilding of the castle.

From the monitoring, it appears that the area around the Castle was heavily modified during the late 19th century renovation of the building, with rubble and mortar found all around the Castle and throughout the landscaped area to the south. Only a few deep features survive, a stone capped drain and two wall foundations, all most likely to be from the 17th century renovations of the Castle. The rest of the area has been heavily terraced and any traces of earlier building have been destroyed and the rubble mixed in the backfill of the surroundings.

Appendix A Context Register

Context No.	Recorded by	Date	Trench	Area	Description	Dimensions (in m)
(001)	AR	08/05/2018	-	Terrace	Deposit. Dark to light grey sand and gravel surface of terrace.	All over the area, 0.1 thick
(002)	AR	08/05/2018	Sewage Drain Trench	Terrace	Deposit. Loose, grey sandy silt deposit under (001) with high frequency of shells, frequent charcoal flecks and small sub-angular and sub-rounded stones.	>26.2 x >1.0 x 0.4
(003)	AR	08/05/2018	Sewage Drain Trench	Terrace	Deposit. Loose, reddish-brown sandy silt deposit under (002), with high frequency of small sub-angular and sub-rounded stones and lense of redder (Fe rich) sands.	>26.2 x >1.0 x 0.1
(004)	AR	08/05/2018	Sewage Drain Trench	Terrace	Deposit. Very loose, yellow sand deposit under (003), clean sand laying over the bedrock.	>26.2 x >1.0 x 0.18
(005)	AR	08/05/2018	Sewage Drain Trench	Terrace	Bedrock outcrop.	At a depth of 0.67
[006]	AR	08/05/2018	Sewage Drain Trench	Terrace	Cut for drain [007]. Linear, N-S, concave and flat base, cut for ceramic sewage drain. The cut was only visible where it cut the bedrock.	1.24 x >0.4 x 0.16
[007]	AR	08/05/2018	Sewage Drain Trench	Terrace	Ceramic drain. Linear, N-S drain for sewage, reddish-brown salt glazed ceramic drain, sealed with cement.	>26.2 x Ø 0.27
(008)	AR	08/05/2018	Sewage Drain Trench Extension	Garden	Turf.	All over the area, 0.06 thick
(009)	AR	08/05/2018	Sewage Drain Trench Extension	Garden	Topsoil. Moderate compaction, grey brown loamy sand, with frequent charcoal and shells.	>3 x >1.7 x 0.14
(010)	AR	08/05/2018	Sewage Drain Trench Extension	Garden	Subsoil. Loose, yellow brown sandy silt, with frequent shells and occasional charcoal flecks and lumps of mortar. Mixed.	>3 x >1.7 x >0.6
[011]	AR	24/05/2018	Sewage Drain Trench Extension	Garden	Stone capped drain. Linear, E-W limestone and mortar drain, filled by (012).	>1.2 x >0.55 (internal 0.22) x 0.22 (Stone cap 0.19)
(012)	AR	24/05/2018	Sewage Drain Trench Extension	Garden	Fill of drain [011]. Very loose, grey brown sandy silt, with occasional lime mortar particles and shells.	>1.2 x 0.22 x 0.03
(013)	AR	07/06/2018	Septic Tank Trench	Garden	Topsoil. Moderate compaction to loose, yellow grey-brown, sandy silt with frequent sub-rounded and sub-angular stones, occasional brick fragments and mortar flecks.	>5.0 x >5.0 x 1.6
(014)	AR	07/06/2018	Septic Tank Trench	Garden	Natural. Loose yellow beige sands.	At a depth of 1.8
(015)	AR	20/07/2018	Electrics Trench	Garden	Topsoil. Moderate compaction, grey brown loamy sand, with occasional small sub-rounded and sub-angular stones.	0.2 thick
(016)	AR	20/07/2018	Electrics Trench	Garden	Natural. Very loose, yellow sands with some waterborne darker lenses.	>0.75 thick
(017)	AR	20/07/2018	Electrics Trench	Garden	Subsoil. Loose, grey beige, silty sand with frequent mortar lumps, shell and medium to small sub-angular stones.	> 11.0 x >0.8 x 0.2
[018]	AR	20/07/2018	Foundation Trench	Terrace	Flagstones. Flagstones surrounding the Castle.	Each 1.8 x 0.9 x 0.05

(019)	AR	20/07/2018	Foundation Trench	Terrace	Deposit. Moderate to loose, dark brown sandy silt, with occasional small to medium stones, brick fragments and shells.	0.4 thick
(020)	AR	20/07/2018	Foundation Trench	Terrace	Deposit. Moderate to loose, black-dark brown sandy silt.	0.12 thick
[021]	AR	20/07/2018	Foundation Trench	Terrace	Metal drain. Linear, WSW-ENE, metal drain coated with black paint.	Ø 0.20
[022]	AR	20/07/2018	Foundation Trench	Terrace	Ceramic drain. Linear, WSW-ENE, salt glazed ceramic drain.	Ø 0.15
[023]	AR	27/07/2018	Terrace Trench	Terrace	Feature. Linear, N-S, sandstone and beige lime mortar, west of and against [024].	>1.3 x 0.75 x >0.24
[024]	AR	27/07/2018	Terrace Trench	Terrace	Feature. Linear, N-S, brick and beige mortar/grey concrete, east of and against [023].	>1.2 x 0.85 x >0.15
[025]	AR	27/07/2018	Terrace Trench	Terrace	Bedrock outcrop. Bedrock appears to have been cut to be flattened, cut to the west by a recently installed service.	2.2 x >1.0
(026)	AR	27/07/2018	Terrace Trench	Terrace	Deposit. Loose, reddish-brown sandy silt deposit under (002), with high frequency of small sub-angular and sub-rounded stones and lens of redder (Fe rich) sands.	Thick: 0.1
(027)	AR	27/07/2018	Terrace Trench	Terrace	Deposit. Loose, grey sandy silt deposit under (026) with occasional small sub-angular and sub-rounded stones.	Thick: 0.2
(028)	AR	27/07/2018	Terrace Trench	Terrace	Deposit. Loose, greyish, sandy silt deposit under (017), similar to (002), with lenses of red sands.	Thick: >0.35

Appendix B Photograph Register

Image No.	Original No.	Direction Facing	Floor	Room	Description
1	-	S	Ground	WC (dis)	View into WC from hall; outer room replastered
2	-	S	Ground	WC (dis)	View of electrical cabinets
3	-	SW	Ground	WC (dis)	View of electrical cabinets
4	-	S	Ground	WC (dis)	Close up of S window in WC
5	-	SE	Ground	Kitchen	View into kitchen from north-west corner
6	-	NE	Ground	Kitchen	View of kitchen from south-west corner
7	-	NW	Ground	Kitchen	View of kitchen from south-east corner
8	-	E	Ground	Kitchen	View of cylinder cupboard in south-east corner of kitchen
9	-	E	Ground	Kitchen	View of fireplace on east wall of kitchen - close up
10	-	E	Ground	Kitchen	View of fireplace on east wall of kitchen
11	-	S	Ground	Kitchen	View of 1970s kitchen units on south wall
12	-	E	Ground	Kitchen	Upper part of cylinder cupboard on east wall of kitchen
13	-	E	Ground	Hall	View along hallway from archive room
14	-	NE	Ground	Hall	Bells on north wall of hallway
15	-	W	Ground	Hall	View along hallway from outside kitchen
16	-	S	Ground	Hall	Telephone fixed to south wall of hallway (to be removed)
17	-	S	Ground	Hall	Telephone fixed to south wooden window shutters (to be removed)
18	-	SSW	Ground	Archive Room	View into archive room from doorway
19	-	W	Ground	Archive Room	Fireplace on west wall of archive room
20	-	W	Ground	Archive Room	Window on west wall archive room
21	-	S	Ground	Archive Room	View of south wall archive room
22	-	S	Ground	Archive Room	View of window on south wall archive room
23	-	SW	Ground	Archive Room	Door to archive room
24	-	W	Ground	Cupboard	View of cupboard
25	-	W	Ground	Shower Room	View into shower room from doorway
26	-	W	Ground	Shower Room	Detail of shower room window on west wall
27	-	NW	Ground	Bedroom	View into bedroom from doorway
28	-	W	Ground	Bedroom	View of window on west wall of bedroom
29	-	NE	Ground	Bedroom	Fireplace in north-east corner of bedroom
30	-	N	Ground	Bedroom	Painting propped against north wall of bedroom
31	-	NE	Ground	Bedroom	View of bedroom from south-west corner towards fireplace
32	-	SE	Ground	Bedroom	View of bedroom from north-west corner
33	-	S	First	Urinal	View into urinal from doorway
34	-	W	First	Urinal	View of urinal fitting on west wall
35	-	W	First	Urinal	Close up view of urinal fitting on west wall
36	-	S	First	Urinal	View of window in south wall of urinal
37	-	NW	First	Urinal	Electrical cabinets on wall
38	-	W	First	Urinal	View of urinal fitting on west wall
39	-	SE	First	Urinal	View into urinal from first floor hallway
40	-	SE	First	Housekeeping	View into housekeeping room from doorway

41	-	E	First	Housekeeping	View of fireplace on east wall of housekeeping room
42	-	S	First	Housekeeping	View of window in south wall of housekeeping room
43	-	W	First	Housekeeping	Taps on window in housekeeping room
44	-	W	First	Housekeeping	Taps on window in housekeeping room
45	-	NW	First	Housekeeping	Bell on west wall of housekeeping room
46	-	S	Second	WC (dis)	View into WC from 2nd floor hallway
47	-	S	Second	WC (dis)	View of south wall window in WC
48	-	SW	Second	WC (dis)	View into WC from 2nd floor hallway
49	-	NW	Second	WC (dis)	View towards electrical cabinet in WC
50	-	E	Second	WC (dis)	View of sink on east wall of WC
51	-	E	Second	WC (dis)	View of skylight over sink - looking up - in WC
52	-	SE	Second	WC (dis)	View of sink on east wall of WC from doorway
53	-	S	Second	WC (dis)	Holder on south wall of sink in WC
54	-	N	Second	WC (dis)	Light fitting on N wall of WC
55	-	SW	Second	WC (dis)	View towards electrical cabinet in WC
56	-	S	Second	WC (dis)	View showing exposed masonry behind window in south wall of WC
57	-	S	Second	Bathroom	View into bathroom from hallway
58	-	S	Second	Bathroom	View of window on south wall of bathroom
59	-	W	Second	Bathroom	Bath on west wall of bathroom
60	-	W	Second	Bathroom	Bath on west wall of bathroom
61	-	N	Second	Bathroom	Control on wall north of bath for 'sea water'
62	-	S	Second	Bathroom	Bath taps in bathroom 2nd floor
63	-	N	Second	Bathroom	Bath taps in bathroom 2nd floor - from above
64	-	N	Second	Bathroom	Bath taps in bathroom 2nd floor - from above without scale
65	-	NE	Second	Bathroom	View of bathroom from south-east corner
66	-	N	Second	Bathroom	North wall of bathroom and door
67	-	W	Cellar	Passage	View along passage from bottom of stairs
68	-	S	Cellar	Larder	View of north wall of larder
69	-	SE	Cellar	Larder	View into larder from doorway
70	-	NE	Cellar	Larder	View of stone benches on east wall of larder
71	-	E	Cellar	Furnace Room	View of east wall of furnace room
72	-	N	Cellar	Furnace Room	View of north wall of furnace room from doorway
73	-	W	Cellar	Furnace Room	View along north wall of furnace room towards west wall, with furnace to south
74	-	W	Cellar	Furnace Room	View of furnace east side
75	-	W	Cellar	Furnace Room	View of west wall and steps; medieval wall to south of steps
76	-	SW	Cellar	Furnace Room	View of west wall of furnace room with later wall built against medieval castle wall
77	-	SE	Cellar	Furnace Room	View of south wall of furnace room
78	-	NW	Cellar	Furnace Room	View of furnace room and brick arched vault from south-east corner
79	-	SW	Cellar	Furnace Room	Sea water pump
80	-	N	Cellar	N Room	View into small room on north side of coal cellar
81	-	N	Cellar	N Room	View into small room on north side of coal cellar - close up

82	-	SW	Cellar	Coal Cellar	View into coal cellar from doorway
83	-	S	Cellar	Coal Cellar	Eastern coal chute
84	-	S	Cellar	Coal Cellar	Eastern coal chute close up
85	-	S	Cellar	Coal Cellar	Western coal chute
86	-	S	Cellar	Coal Cellar	Western coal chute close up
87	-	E	Cellar	Coal Cellar	View into store on east side of coal cellar
88	-	E	Cellar	Coal Cellar	View into store on east side of coal cellar
89	-	S	Cellar	Coal Cellar	South wall of coal cellar
90	-	W	Cellar	Coal Cellar	West wall of coal cellar
91	-	N	Cellar	Coal Cellar	North wall of coal cellar
92	-	E	Cellar	Passage	View along passage from coal cellar
93	-	S	Cellar	Stairwell	View of stairwell from cellar
94	-	SE	Cellar	Stairwell	View of electrical cabinet on east wall of stairwell
95	-	S	Cellar	Stairwell	View towards door at base of stairwell
96	-	E	Cellar	Stairwell	East wall of stairwell
97	-	S	Cellar	Stairwell	View from top of the stairs on ground floor towards door at base
98	-	S	Ground	Hall	View of hoist, to be replaced by cupboard
99	-	S	Ground	Hall	View of hoist, to be replaced by cupboard
100	-	SE	Ground	Hall	View of hoist, to be replaced by cupboard
101	-	S	First	Hall	View of hoist, to be replaced by cupboard
102	-	S	Second	Hall	Location of cupboard to be inserted
103	-	NE	External	-	View of Castle covered in scaffolding
104	-	NE	External	-	View of Castle covered in scaffolding
105	1358	N	-	-	Sewage Drain Trench, as exposed
106	1359	N	-	-	Sewage Drain Trench, as exposed
107	1361	S	-	-	Sewage Drain Trench, bedrock area, general view
108	1362	S	-	-	Sewage Drain Trench, bedrock area, general view
109	1365	S	-	-	Sewage Drain Trench, bedrock area, detail
110	1366	N	-	-	Sewage Drain Trench, bedrock area, general view
111	1367	W/Vert.	-	-	Sewage Drain Trench, bedrock area, general view
112	1368	E	-	-	Sewage Drain Trench, west facing section sample
113	1369	W	-	-	Sewage Drain Trench, east facing section sample
114	1370	E	-	-	Sewage Drain Trench, west facing section sample
115	1371	N	-	-	Sewage Drain Trench, general view
116	1372	N	-	-	Sewage Drain Trench, general view
117	1373	S	-	-	Sewage Drain Trench, general view
118	1374	SE	-	-	Sewage Drain Trench, general view
119	1376	E	-	-	Sewage Drain Trench Extension, as exposed
120	1378	S	-	-	Sewage Drain Trench Extension, north facing section
121	1379	N	-	-	Seawall Trench, as exposed
122	1380	SW	-	-	Seawall Trench, as exposed, detail
123	1381	E	-	-	Sewage Drain Trench Extension, general view
124	1382	N	-	-	Seawall Trench, general view
125	1383	N	-	-	Seawall Trench, location
126	2056	SE	-	-	Sewage Drain Trench, as exposed
127	2057	SSE	-	-	Sewage Drain Trench, as exposed
128	2058	NW	-	-	Sewage Drain Trench, as exposed
129	2059	SE	-	-	Sewage Drain Trench, as exposed, with rod
130	2060	NE	-	-	Sewage Drain Trench, south facing section, showing drain [011]
131	2062	NE	-	-	Sewage Drain Trench, south facing section, showing drain [011]
132	2063	NE	-	-	Sewage Drain Trench, south facing section, showing drain [011]
133	2064	E	-	-	Sewage Drain Trench, south facing section, showing drain [011]
134	2065	E	-	-	Sewage Drain Trench, south facing section, showing drain [011]

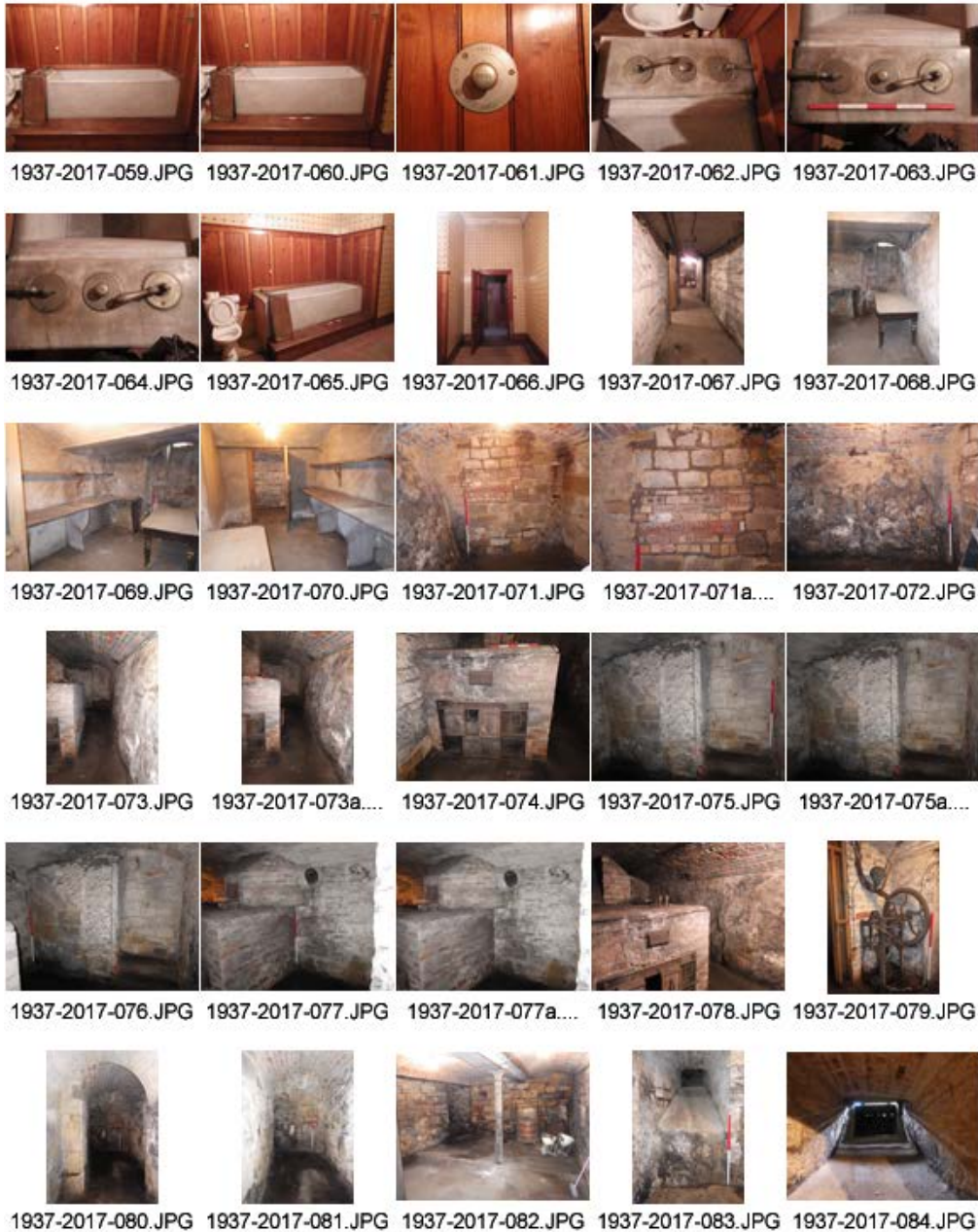
135	2066	NE	-	-	Sewage Drain Trench, drain [011], detail
136	2067	E	-	-	Sewage Drain Trench, drain [011], detail
137	2068	NE/Vert.	-	-	Sewage Drain Trench, drain [011]
138	2069	NE/Vert.	-	-	Sewage Drain Trench, drain [011]
139	2071	E	-	-	Sewage Drain Trench, view inside drain
140	2072	E	-	-	Sewage Drain Trench, view inside drain
141	2075	E	-	-	Sewage Drain Trench, view inside drain
142	2076	NE	-	-	Sewage Drain Trench, drain [011], south facing section
143	2077	NE	-	-	Sewage Drain Trench, drain [011], south facing section
144	2078	N	-	-	Sewage Drain Trench, drain [011], sampling, detail
145	2079	SSE	-	-	Septic Tank Trench, general view
146	2080	SSE	-	-	Septic Tank Trench, general view
147	2081	SE	-	-	Septic Tank Trench, general view
148	2082	S	-	-	Septic Tank Trench, general view
149	2083	E	-	-	Septic Tank Trench, general view
150	2084	-	Ground	Bedroom	Looking into ceiling joists
151	2085	-	Ground	Bedroom	Looking into ceiling joists
152	2086	-	Ground	Bathroom	Wall stripping
153	2087	-	Ground	Bathroom	Wall stripping
154	2088	-	Ground	Bathroom	Wall stripping
155	2089	-	Ground	Kitchen	Kitchen press stripped
156	2090	-	Ground	Kitchen	Kitchen press stripped
157	2091	-	Basement	Basement 3	Change in masonry in recess
158	2092	-	Basement	Basement 3	Change in masonry in recess
159	2093	-	Basement	Basement 3	Change in masonry in recess
160	2094	-	Basement	Basement 1	Repainted and refitted
161	2095	-	Ground	Basement Hall	Shows blocked access to cellars
162	2096	-	First	Lift	Looking down into shaft
163	2097	-	First	Bathroom	Wall stripping
164	2098	-	First	Bathroom	Looking into ceiling joists
165	2099	-	Second	Secondary Hall	Floor boards lifted
166	2101	-	Second	Secondary Hall	Floor boards lifted
167	2102	-	Second	Secondary Hall	Wall stripping
168	2103	-	Second	Secondary Hall	Wall stripping, showing lath and plaster abutting
169	2105	-	Ground	Lift	Looking down into rubble
170	2106	-	Ground	Lift	Looking up
171	2107	-	Ground	Lift	Concrete pad
172	7609	S	-	-	Septic Tank Trench, as exposed
173	7610	S	-	-	Septic Tank Trench, as exposed
174	7611	SE	-	-	Septic Tank Trench, as exposed
175	7612	NE	-	-	Septic Tank Trench, as exposed
176	7613	S	-	-	Septic Tank Trench, north facing section, top
177	7614	S	-	-	Septic Tank Trench, north facing section, top
178	7615	S	-	-	Septic Tank Trench, north facing section
179	7616	-	-	-	Large stones in spoil heap
180	7617	-	-	-	Large stones in spoil heap
181	7618	-	-	-	Large stones in spoil heap
182	7619	-	-	-	Large stones in spoil heap

183	7620	-	Ground	Kitchen	Fire place on east wall
184	7621	-	Ground	Kitchen	Fire place on east wall
185	7622	-	Ground	Kitchen	Ceiling stripping
186	7623	-	First	Large Hall	Floor boards lifted
187	7624	-	First	Large Hall	Floor boards lifted
188	7625	-	First	Large Hall	Floor boards lifted
189	7626	-	First	Large Hall	Floor boards lifted
190	7627	-	First	Large Hall	Floor boards lifted in door threshold, showing north foundations
191	7629	-	First	Large Hall	Floor boards lifted in door threshold, showing north foundations
192	7630	-	First	Butler's Pantry	Exposed lintel in west wall
193	7631	-	First	Butler's Pantry	Exposed lintel in west wall
194	7632	-	First	Lift	View into lift shaft
195	7633	-	First	Lift	View into lift shaft
196	7634	-	First	Lift	View into lift shaft
197	7635	-	First	Lift	View into lift shaft
198	7636	-	First	Lift	View into lift shaft
199	8801	W	-	-	Electrics Trench, general view
200	8802	N	-	-	Electrics Trench, general view
201	8803	E	-	-	Electrics Trench, west facing section
202	8804	E	-	-	Electrics Trench, west facing section
203	8806	S	-	-	Electrics Trench, north facing section
204	8807	E	-	-	Electrics Trench, general view with the Castle
205	8808	S	-	-	Electrics Trench, north facing section
206	8809	E	-	-	Electrics Trench, general view with the Castle
207	8810	E	-	-	Electrics Trench, general view with the Castle
208	8811	E	-	-	Electrics Trench, general view with the Castle
209	8812	SE	-	-	Electrics Trench, general view
210	8813	S	-	-	Electrics Trench, East End, north facing section
211	8815	SE	-	-	Electrics Trench, East End, north-east corner sections
212	8816	S	-	-	Electrics Trench, East End, north facing section
213	8817	N	-	-	Foundation Trench, general view
214	8818	N/Vert.	-	-	Foundation Trench, general view
215	8819	N/Vert.	-	-	Foundation Trench, general view
216	8820	N	-	-	Foundation Trench, general view
217	8821	N	-	-	Foundation Trench, south facing section with Castle elevation
218	8950	SW	-	-	Terrace Trench, general view
219	8951	SW	-	-	Terrace Trench, general view
220	8952	SW	-	-	Terrace Trench, general view
221	8953	W	-	-	Terrace Trench, general view
222	8954	W	-	-	Terrace Trench, general view
223	8955	E	-	-	Terrace Trench, general view
224	8956	E	-	-	Terrace Trench, general view
225	8957	SE	-	-	Terrace Trench, features [023] and [024]
226	8958	SE	-	-	Terrace Trench, features [023] and [024]
227	8959	SE	-	-	Terrace Trench, features [023] and [024]
228	8960	SE	-	-	Terrace Trench, features [023] and [024]
229	8961	NW	-	-	Terrace Trench, features [023] and [024]
230	8962	SW	-	-	Terrace Trench, features [023] and [024]
231	8963	SW	-	-	Terrace Trench, features [023] and [024]

232	8964	SW	-	-	Terrace Trench, features [023] and [024]
233	8965	SW	-	-	Terrace Trench, features [023] and [024]
234	8966	SW	-	-	Terrace Trench, features [023] and [024]
235	8967	NE	-	-	Terrace Trench, features [023] and [024]
236	8968	NE	-	-	Terrace Trench, features [023] and [024]
237	8969	NE	-	-	Terrace Trench, south-west facing section
238	8970	NE	-	-	Terrace Trench, south-west facing section
239	8971	NE	-	-	Terrace Trench, south-west facing section
240	8973	S	-	-	Terrace Trench, bedrock outcrop [025]
241	8974	E	-	-	Terrace Trench, bedrock outcrop [025], with recent service cut
242	8975	E	-	-	Terrace Trench, bedrock outcrop [025], with recent service cut
243	8976	W	-	-	Terrace Trench, bedrock outcrop [025]
244	8977	W	-	-	Terrace Trench, bedrock outcrop [025]
245	8978	NW	-	-	Terrace Trench, south-east facing section
246	8979	SE	-	-	Terrace Trench, north-west facing section
247	8980	SE	-	-	Terrace Trench, north-west facing section
248	8981	S	-	-	Terrace Trench, north facing section
249	8982	S	-	-	Terrace Trench, north facing section
250	8983	S	-	-	Terrace Trench, north facing section
251	8984	S	-	-	Terrace Trench, north facing section
252	8985	S	-	-	Terrace Trench, north facing section
253	8986	S	-	-	Terrace Trench, north facing section
254	8987	S	-	-	Terrace Trench, north facing section
255	8988	N	-	-	Terrace Trench, south facing section
256	8989	N	-	-	Terrace Trench, south facing section
257	8990	N	-	-	Terrace Trench, south facing section
258	8991	N	-	-	Terrace Trench, south facing section
259	8992	N	-	-	Terrace Trench, south facing section

Appendix C Contact Sheets







1937-2017-085.JPG



1937-2017-086.JPG



1937-2017-087.JPG



1937-2017-088.JPG



1937-2017-089.JPG



1937-2017-090.JPG



1937-2017-091.JPG



1937-2017-092.JPG



1937-2017-093.JPG



1937-2017-094.JPG



1937-2017-095.JPG



1937-2017-096.JPG



1937-2017-097.JPG



1937-2017-098.JPG



1937-2017-099.JPG



1937-2017-100.JPG



1937-2017-101.JPG



1937-2017-102.JPG



1937-2017-103.JPG



1937-2017-104.JPG



AA1937-2018-10...



AA1937-2018-10...



AA1937-2018-10...



AA1937-2018-10...



AA1937-2018-10...



AA1937-2018-11...



AA1937-2018-11...



AA1937-2018-11...

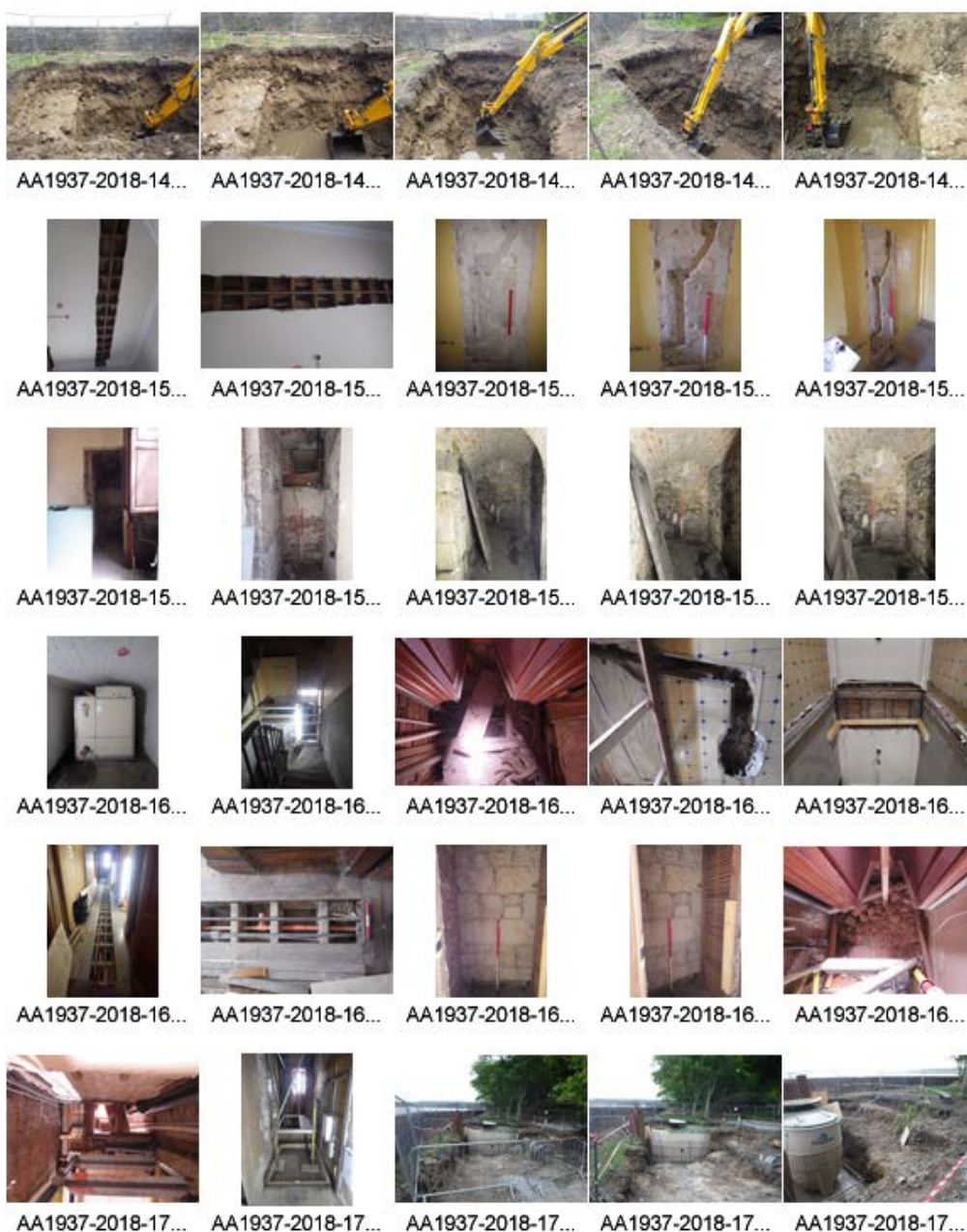


AA1937-2018-11...

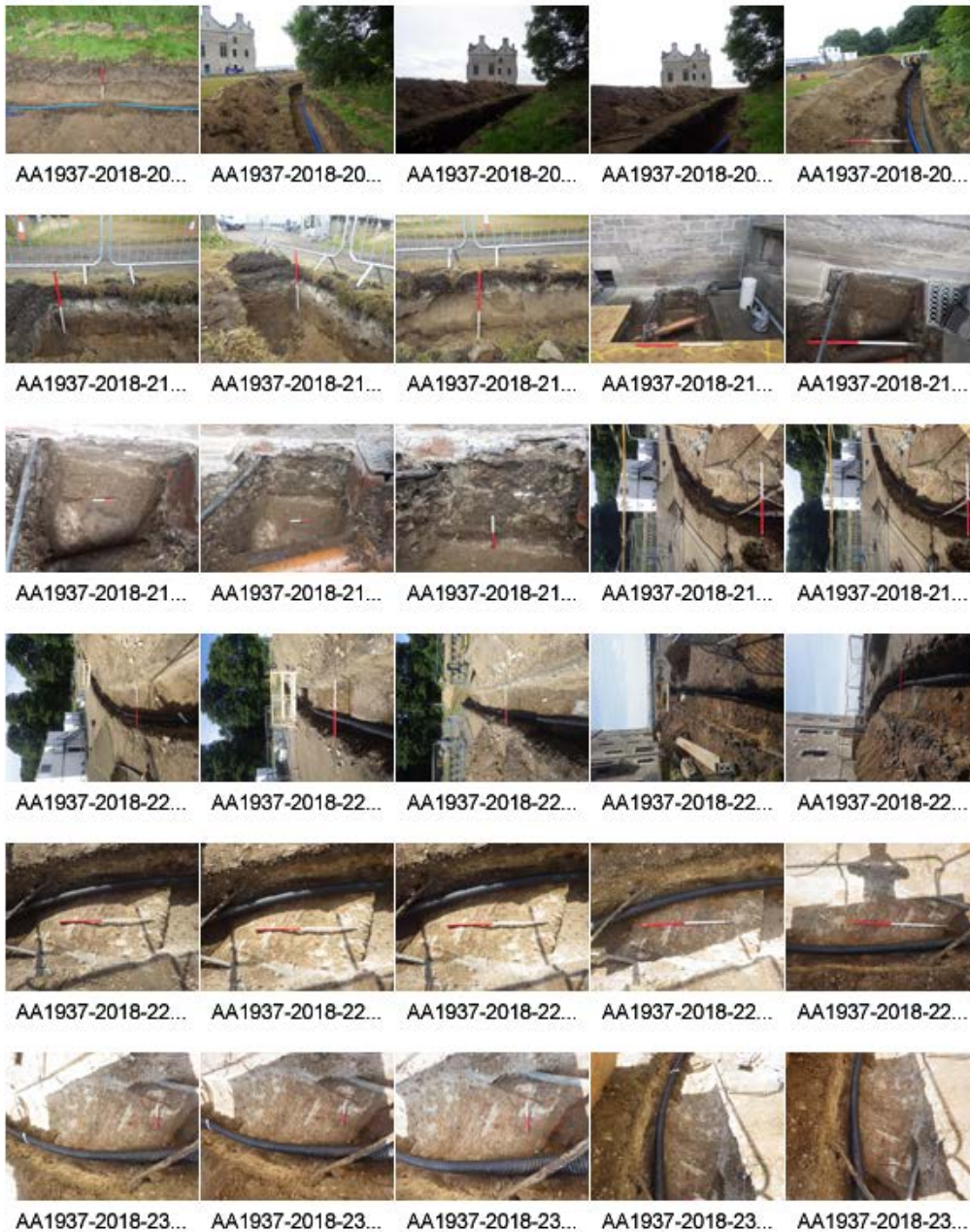


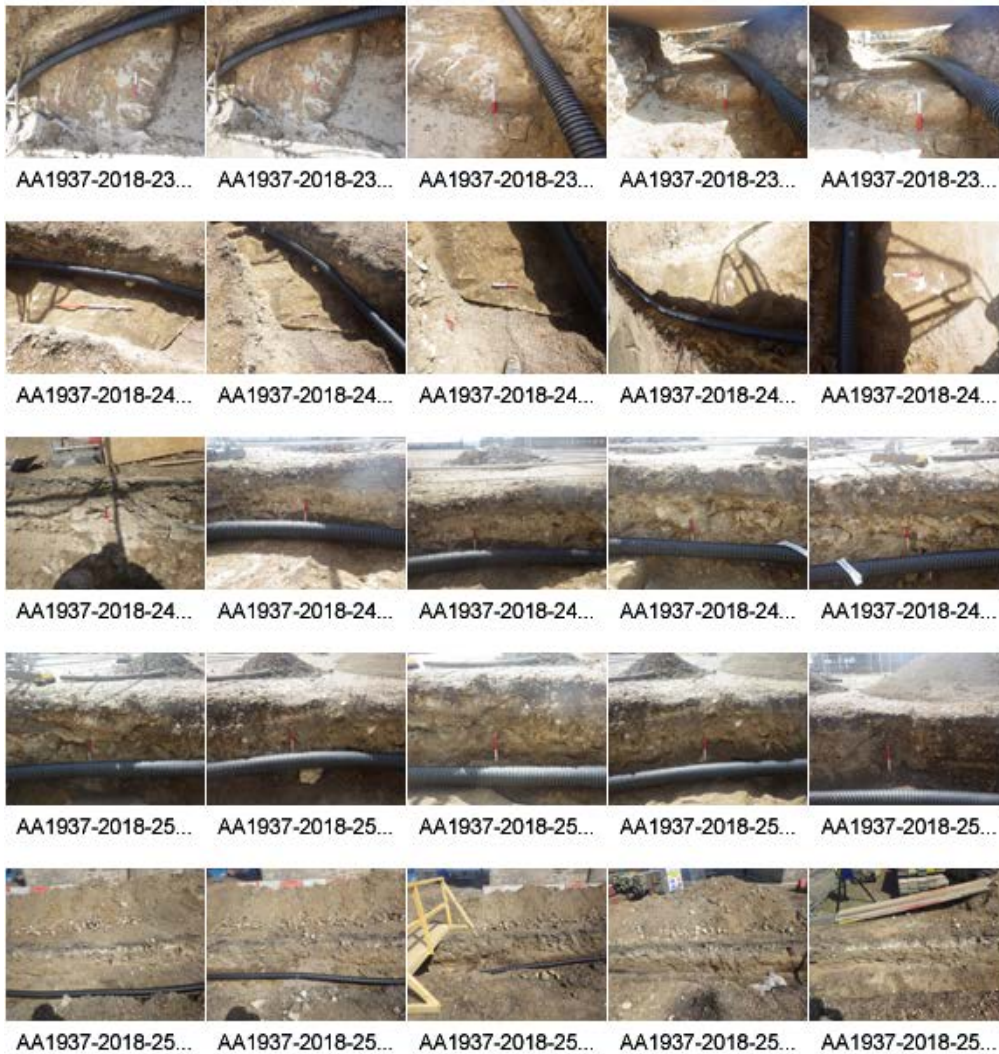
AA1937-2018-11...









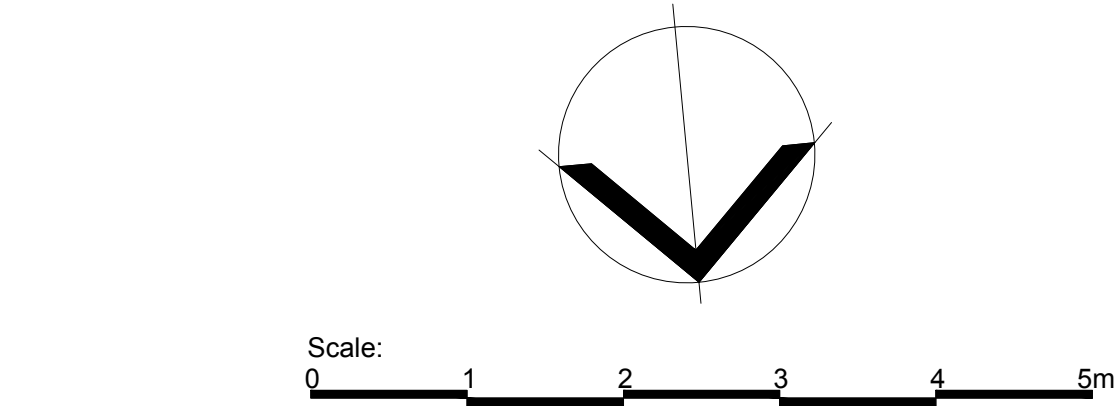
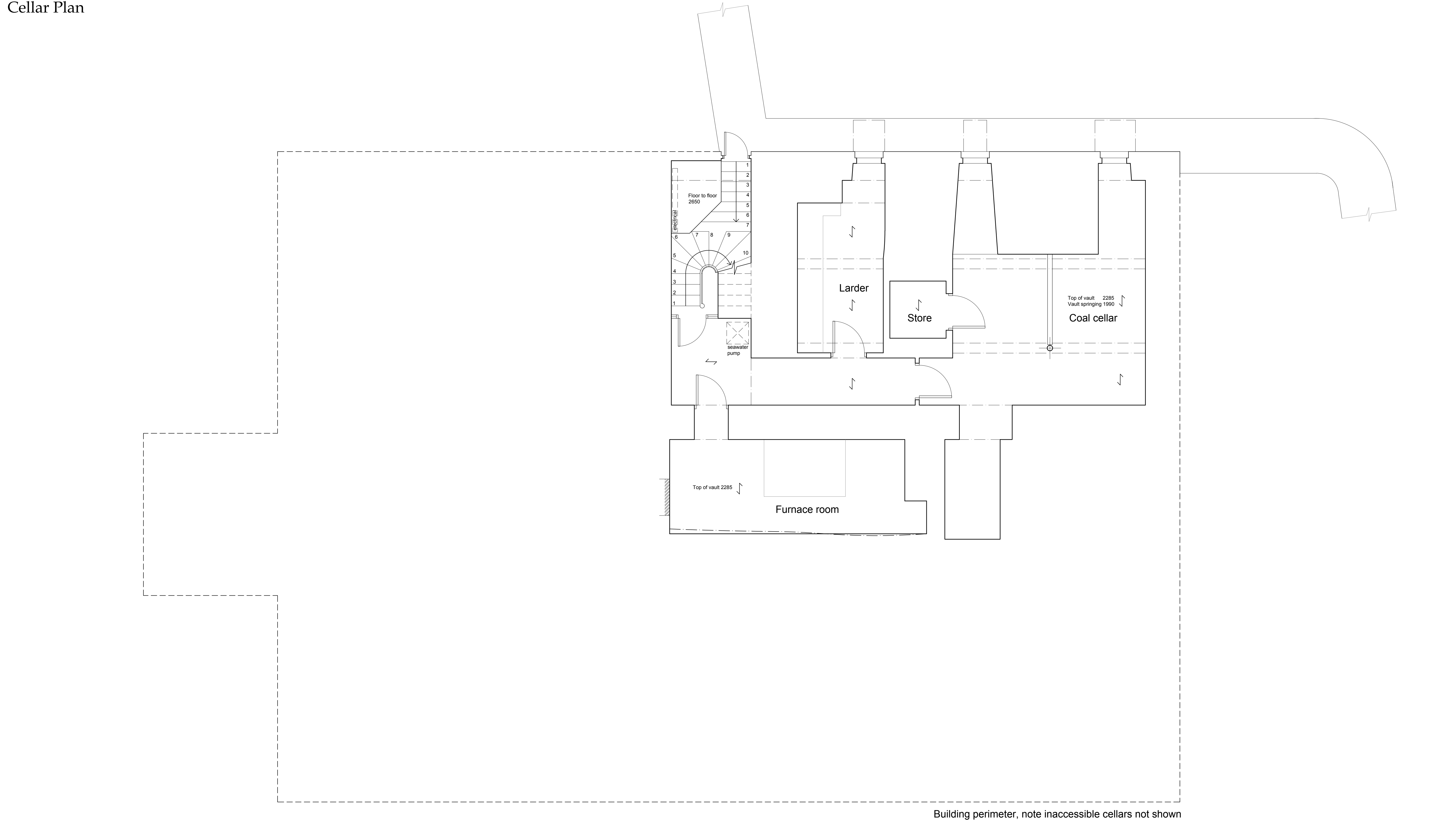


Appendix D Floor plans of Barnbogle Castle

Barnbougles Castle

Cellar Plan

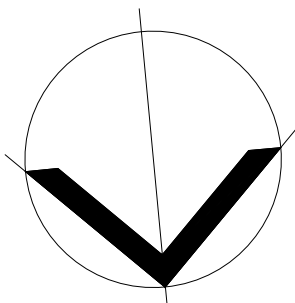
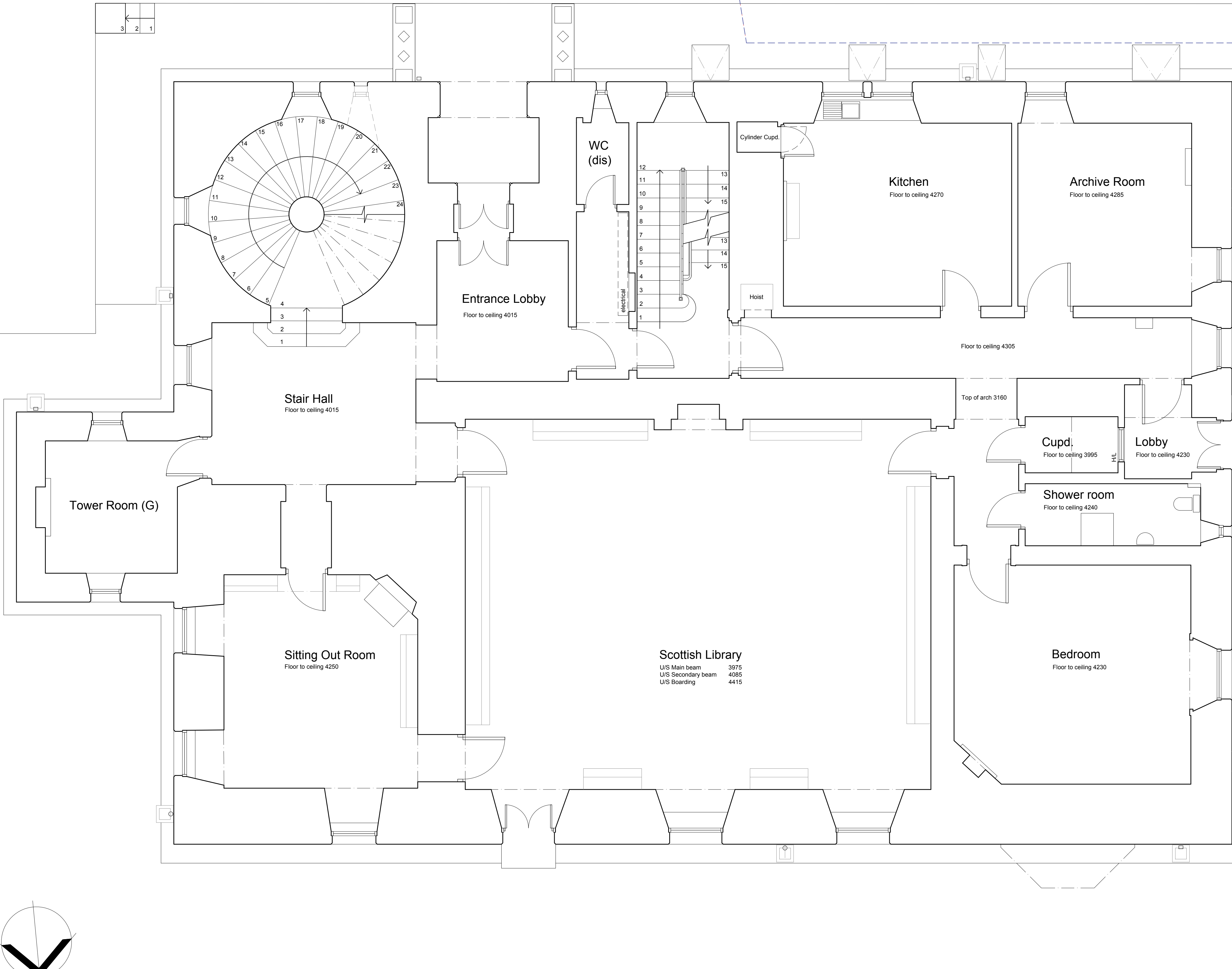
NOTE
Prepared following site survey, 20th December 2016



Barnbogle Castle

Ground Floor Plan

NOTE
Prepared following site survey, 20th December 2016



Scale: 0 1 2 3 4 5m

Simpson & Brown

www.simpsonandbrown.co.uk
The Old Printworks, 77a Brunswick Street, Edinburgh, EH17 5HS
admin@simpsonandbrown.co.uk 0131 555 4678

Architecture Heritage Consultancy Archaeology

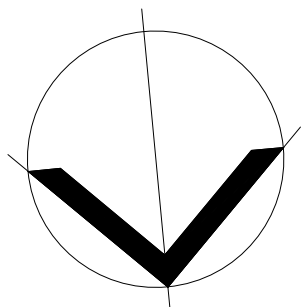
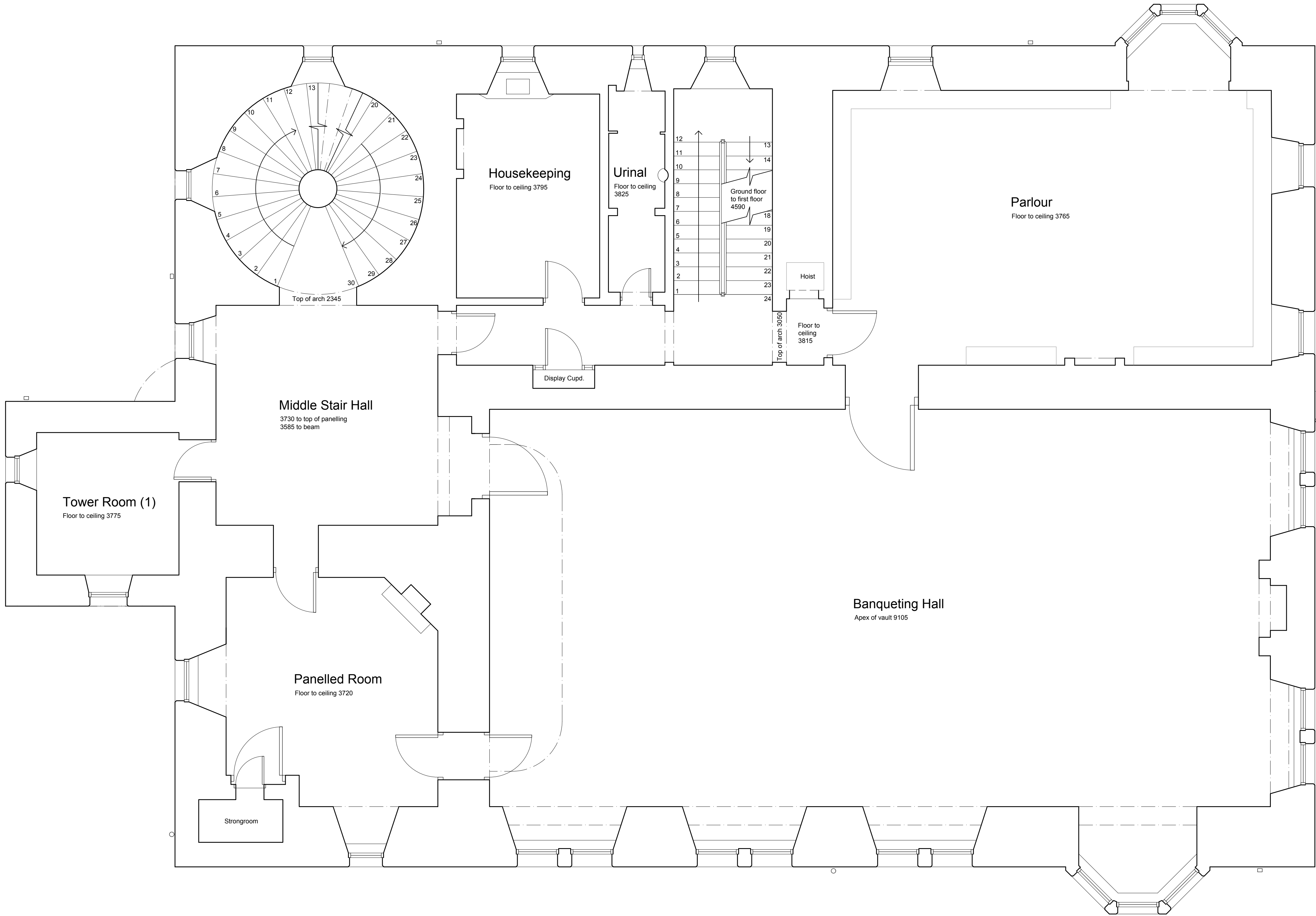
JOB TITLE **Barnbogle Castle** March 17
CLIENT **The Roseberry Estate Partnership**
DWG TITLE **Barnbogle Events Venue Works**
Existing Ground Floor Plan

A1 SCALE DRAWN STATUS JOB NO. DWG NO. REV
1:50 RG Planning 1937-02 P-05 -

Barnbougles Castle

First Floor Plan

NOTE
Prepared following site survey, 20th December 2016

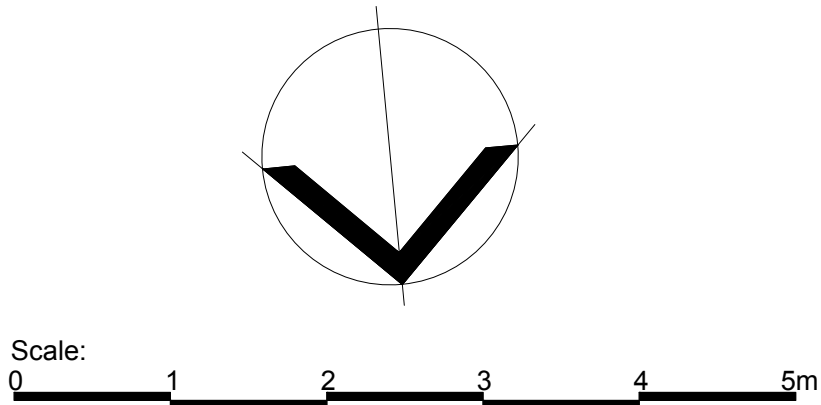
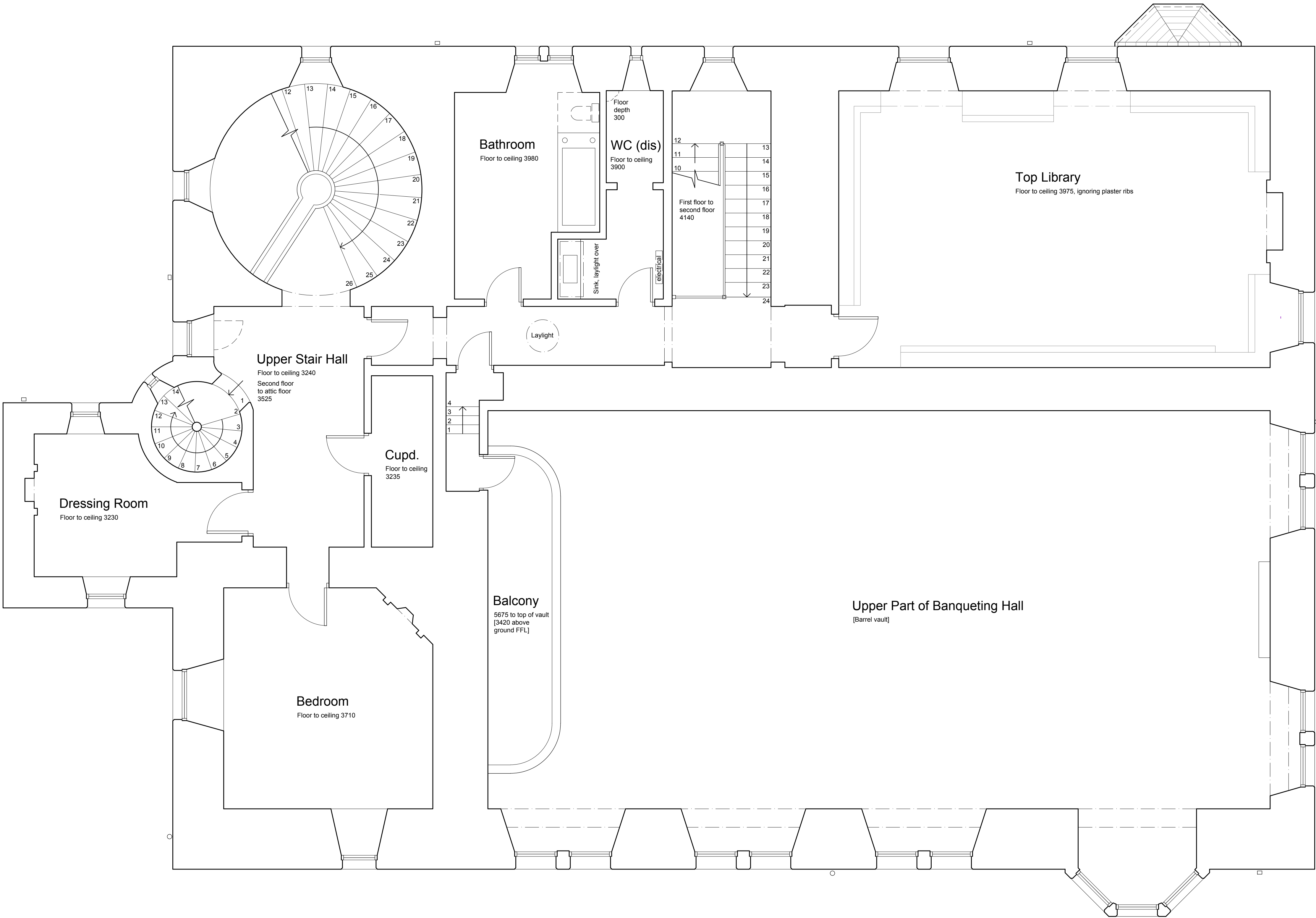


Scale:
0 1 2 3 4 5m

Barnbogle Castle

Second Floor Plan

NOTE
Prepared following site survey, 20th December 2016



Appendix E DES Entry

LOCAL AUTHORITY:	City of Edinburgh
PROJECT TITLE/SITE NAME:	Barnbogle Castle
PROJECT CODE:	1937
PARISH:	Dalmeny
NAME OF CONTRIBUTOR:	Antoine Ruchonnet
NAME OF ORGANISATION:	Addyman Archaeology
TYPE(S) OF PROJECT:	Historic Building Recording; Monitoring
NMRS NO(S):	NT17NE 6; 50443
SITE/MONUMENT TYPE(S):	Country House
SIGNIFICANT FINDS:	none
NGR (2 letters, 8 or 10 figures)	NT 16869 78526
START DATE (this season)	July 2017
END DATE (this season)	July 2018
PREVIOUS WORK (incl. DES ref.)	
MAIN (NARRATIVE) DESCRIPTION: (May include information from other fields)	<p>Addyman Archaeology undertook Historic Building Recording and monitoring at Barnbogle Castle as part of a programme of works to restore the castle. The Castle is a Category A Listed Building. The first house at Barnbogle was built in the 13th century. The present castle was originally built in the 17th century and was rebuilt in 1881 by the 5th Earl of Rosebery following an accidental explosion where it was partly blown up.</p> <p>The Historic Building Recording was undertaken in July 2018 and focussed on those areas subject to proposed alterations, on the ground, first and second floors; a full photographic record was also made of the cellar, where parts of the medieval castle survive. Evidence for at least three phases of construction was recorded in the Furnace Room of the cellar, which may date to the medieval period. The north wall of this cellar is rock-cut, with later rebuilding and blocking in stone and the 19th century cellar vaulting in brick.</p> <p>Archaeological monitoring was undertaken between May and July 2018 during a series of monitoring visits to inspect excavated trenches. Two trenches were excavated across the Castle grounds on the terrace and the landscaped gardens to the south. The topsoil generally contained mortar and occasional rubble, presumably derived from demolition of the 17th century castle. A drain and two linear features appeared to be associated with the original building and a late 19th century ceramic sewer drain was partly reused to run the future sewer line from the Castle to the new septic tank to the south-east. The Castle is built directly over the bedrock, which has been terraced in some places, although it was unclear as to whether this was undertaken during the original medieval construction or later rebuildings.</p>
PROPOSED FUTURE WORK:	none
CAPTION(S) FOR ILLUSTRS:	
SPONSOR OR FUNDING BODY:	Rosebery Estates Partnership
ADDRESS OF MAIN CONTRIBUTOR:	The Old Printworks, 77a Brunswick Street, Edinburgh EH7 5HS
EMAIL ADDRESS:	admin@addyman-archaeology.co.uk
ARCHIVE LOCATION	NRHE (intended)