

Scotch Whisky Experience

Castlehill, City of Edinburgh

Watching Brief: April 2018 – October 2018

for

Scotch Whisky Experience

November 2018



Scotch Whisky Experience

Addyman Archaeology

Archaeology Heritage Consultancy Architecture

Addyman Archaeology

The Old Printworks, 77a Brunswick Street, Edinburgh, EH7 5HS
admin@addyman-archaeology.co.uk
0131 555 4678

Scotch Whisky Experience

Castlehill, City of Edinburgh

Watching Brief: April - October 2018

Job number 2324.00

November 2018

by Antoine Ruchonnet

Contents

Illustrations

Acknowledgements

Executive Summary

| | | |
|-------------------|--|-----------|
| 1. | <i>Introduction</i> | 5 |
| | i. <i>General</i> | 5 |
| | ii. <i>Site location and setting</i> | 6 |
| 2. | <i>Historical Summary</i> | 8 |
| | i. <i>Historic Map Regression</i> | 8 |
| 3. | <i>Methodology</i> | 10 |
| 4. | <i>Results</i> | 11 |
| | i. <i>Trial Pits</i> | 11 |
| | a. <i>Trial Pit 1</i> | 11 |
| | b. <i>Trial Pit 2</i> | 11 |
| | c. <i>Trial Pit 3</i> | 12 |
| | d. <i>Trial Pit 4</i> | 12 |
| | e. <i>Trial Pit 5</i> | 13 |
| | ii. <i>Internal works</i> | 13 |
| | iii. <i>Western Courtyard</i> | 19 |
| | iv. <i>Southern Courtyard and Lift Shaft</i> | 22 |
| 5. | <i>Finds</i> | 24 |
| 6. | <i>Discussion</i> | 25 |
| Appendix A | <i>Context Register</i> | 28 |
| Appendix B | <i>Drawings Register</i> | 31 |
| Appendix C | <i>Samples Register</i> | 32 |
| Appendix D | <i>Photograph Register</i> | 33 |
| Appendix E | <i>Finds Register</i> | 42 |
| Appendix F | <i>DES entry</i> | 43 |

Illustrations

List of Figures

| | |
|--|----|
| Figure 1 Site location | 7 |
| Figure 2 Edinodunensis Tabulam/Iacobus Gordinius P.Rothenayus Amsterdam 1647 © nls | 8 |
| Figure 3 Plan of the city and castle of Edinburgh by Willm Edgar 1765 © nls | 8 |
| Figure 4 Ordnance Survey First Edition of 1852 © nls | 9 |
| Figure 5 Ordnance Survey large scale town plan sheet 11.7.20 surveyed in 1894 published in 1895 © nls | 9 |
| Figure 6 Location of Trial Pits | 10 |
| Figure 7 Site plan | 16 |
| Figure 8 Site plan, Detail | 17 |
| Figure 9 SE facing Section East of Wall [031] | 18 |
| Figure 10 S facing Section West of Wall [031] | 18 |
| Figure 11 East facing Section of Wall [049] and Cut [050] | 21 |
| Figure 12 Plan of Wall [049] | 21 |
| Figure 13 Elevation of Wall [049] | 22 |
| Figure 14 Overlay of Edgar's plan of 1765 on to site plan; the walls discovered may correspond to the north-east corner of the building on Johnston terrace | 26 |
| Figure 15 Overlay of OS first edition plan of 1852 on to site plan; the east-west wall in the western courtyard corresponds to a boundary wall on the west, while the north-south wall corresponds to the Close boundary | 27 |

List of Plates

| | |
|--|----|
| Plate 1 Trial Pit 1, General View | 11 |
| Plate 2 Trial Pit 1, West facing Section | 11 |
| Plate 3 Trial Pit 2, General View | 11 |
| Plate 4 Trial Pit 3, West facing Section | 11 |
| Plate 5 Trial Pit 3, General View | 12 |
| Plate 6 Trial Pit 3, East facing Section | 12 |
| Plate 7 Trial Pit 4, General View | 12 |
| Plate 8 Trial Pit 4, East facing Section | 12 |
| Plate 9 Trial Pit 5, General View | 13 |
| Plate 10 Trial Pit 5, North facing Section | 13 |
| Plate 11 Sleeper Wall [024], showing Break for Ceramic Drain | 14 |
| Plate 12 Service Trench [025] with Lead Pipe (026) | 14 |
| Plate 15 Wall [031] and showing the West faced cut by the Foundations of the School | 15 |
| Plate 16 Cut [029] with Backfills (027) and (028) | 15 |
| Plate 17 Wall [038], South Face, showing Plaster | 19 |
| Plate 18 Wall [038], showing the possible Rubble Drain to the right of the Wall | 19 |
| Plate 19 Large Sandstone Blocks in (044) | 19 |
| Plate 20 Drains [045] and [048] | 19 |
| Plate 21 Drain [048] showing Cut in Bedrock | 20 |
| Plate 22 Drain [045] and Cut [055] | 20 |
| Plate 23 Wall [049] as first exposed | 20 |
| Plate 24 Cut [050] with Wooden Beam | 20 |
| Plate 25 Wall [049] showing Bedrock to the Right | 22 |
| Plate 26 Wall [049] directly lying over Bedrock | 22 |
| Plate 27 View of excavations southern courtyard, school building to N, retaining wall to S | 23 |

| | |
|---|----|
| Plate 28 Exposed foundations of school building from southern courtyard excavations | 23 |
| Plate 29 Remains of former steps | 23 |
| Plate 30 General view of excavations of southern courtyard, rubble blocking | 23 |
| Plate 31 SF001, George III Half Penny, Obverse | 24 |
| Plate 32 SF001, George III Half Penny, Reverse | 24 |
| Plate 33 SF002, J. MacKenzie Clay Pipe | 24 |

Unless otherwise stated, all content is the copyright of Simpson & Brown *Architects* with Addyman Archaeology.

Scotch Whisky Experience

Castlehill, City of Edinburgh

Watching Brief

Executive Summary

Addyman Archaeology undertook a Watching Brief at Scotch Whisky Experience, Castlehill, adjacent to Edinburgh Castle esplanade during ground breaking works as part of a scheme to expand and enhance the building. The building is a former school and adjacent janitor's house and is a Category B Listed Building. The monitoring included a series of trial pits as well as internal works and works to the western and southern courtyards.

The trial pits did not reveal any evidence for earlier deposits. The internal ground reduction revealed two walls, which pre-dated the school building. Examination of historic maps suggests that these may be the north-east corner of a building depicted on Edgar's map of 1765, with the eastern boundary surviving as the close boundary by the time of the first edition Ordnance Survey map and the construction of Johnston Terrace.

Further monitoring undertaken in the western and southern courtyards revealed an east-west boundary in the western courtyard, as depicted on the first edition Ordnance Survey map.

1. Introduction

i. General

Addyman Archaeology were contracted by LDN Architects on behalf of the Scotch Whisky Experience to engage in the archaeological mitigation required on all ground breaking works undertaken as part of a scheme to enhance and expand facilities at The Scotch Whisky Experience, 354 Castlehill, Edinburgh, EH12NE. The building, formerly a school and adjacent janitors house, are Category B listed buildings (LB28490). Conditional planning permission for the development (planning ref no: 17/03360/FUL) together with Listed Building Consent (LBC 17/03335/LBC) were granted on the 5th of February 2018 with the following archaeological condition attached:

No demolition nor development shall take place on the site until the applicant has secured the implementation of a programme of archaeological work (excavation, analysis, reporting, and publication) in accordance with a written scheme of investigation which has been submitted by the applicant and approved by the Planning Authority.

A Written Scheme of Investigation (WSI), dated 9 March 2018, was therefore produced by Addyman Archaeology and accepted by John Lawson of CECAS (City of Edinburgh Council Archaeology Service). The WSI contained the methods that will be used to appropriately monitor the ground-breaking works, and stipulated the production of this Data Structure Report (DSR).

This report contains maps reproduced under licence by permission of the Trustees of the National Library of Scotland (NLS). The Roy Military Survey appears courtesy of the British Library Board (BL).

A record of the watching brief (*OASIS ID: addymanal-334695*) has been deposited with the Online Access to the Index of Archaeological Investigations (OASIS) website hosted by the Archaeological Data Service and with *Discovery and Excavation in Scotland* (DES), the annual publication of fieldwork by Archaeology Scotland.

ii. Site location and setting

The Scotch Whisky Experience occupies the former Castlehill School built in 1887. The current redevelopment project also incorporates the three storey janitors house which lies to the south on Johnston Terrace and the area previously used as a playground which lies between. The buildings and open area which form the site are situated on the south side of Castlehill, adjacent to Edinburgh Castle Esplanade (NGR: NT 25408 73503; *figure 1*). The site is flanked by the Category A listed Cannonball House (LB28491) to the west and Boswell's Court incorporating The Witchery restaurant (LB28489) to the east.

The site lies within the Old Town Conservation Area (CA 19), and the UNESCO World Heritage Site.

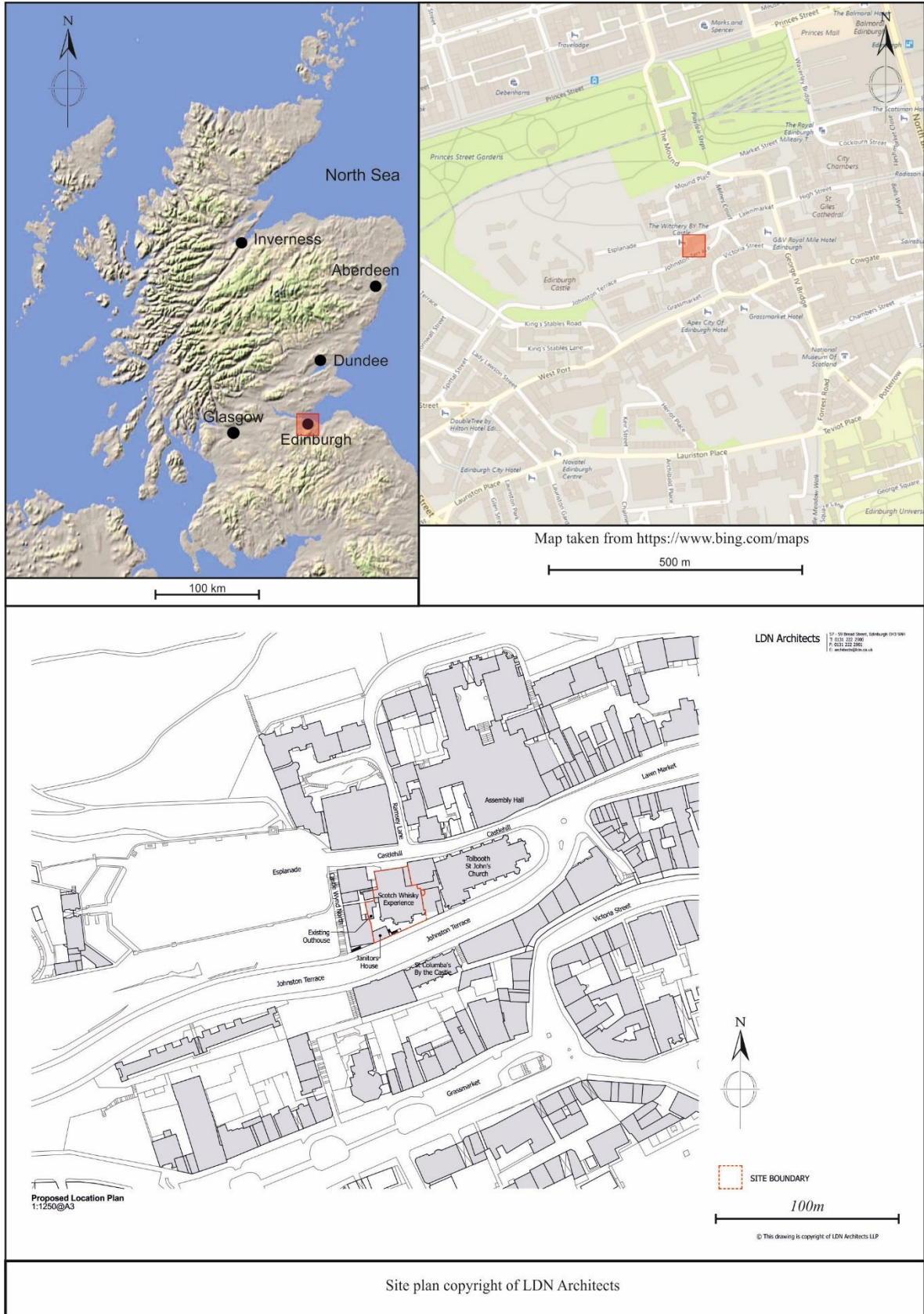


Figure 1 Site location

2. Historical Summary

i. Historic Map Regression

The site is located in the heart of Edinburgh's Old Town and is therefore well represented in detailed historic maps. The earliest detailed map was surveyed in 1582, but it is difficult to exactly locate the site. The earliest map examined which appeared to give an accurate depiction of the site is thought to date from 1647 and was produced by James Gordon and printed in Amsterdam (*figure 2*). Both sides of the High Street and Castlehill are densely packed with buildings. The site itself has a building fronting on to Castlehill, with a series of long narrow buildings running perpendicular to the street frontage, additional buildings are crammed into the area behind stretching down slope to the Grassmarket.

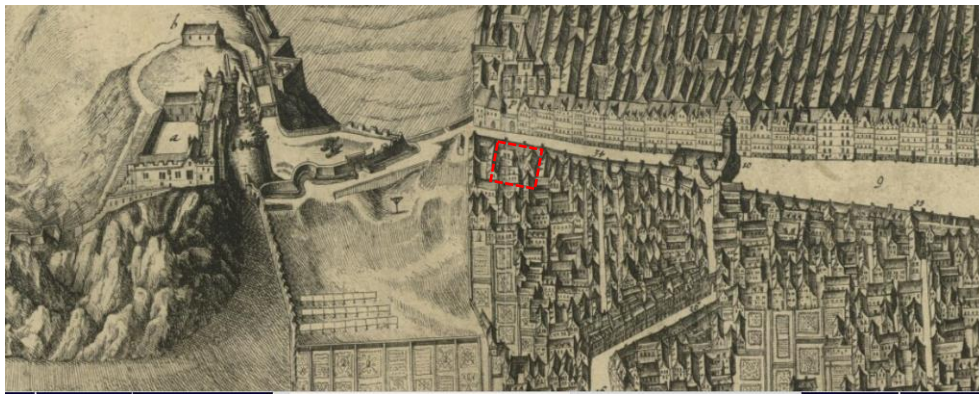


Figure 2 *Edinodunensis Tabulam*/Iacobus Gordinius P.Rothenayus Amsterdam 1647 © nls



Figure 3 *Plan of the city and castle of Edinburgh* by Willm Edgar 1765 © nls

By the mid eighteenth century the overcrowding depicted on the earlier map has much reduced (*figure 3*). The site is now occupied by one or two large properties with open areas to the rear and gardens at the south, where a lane can be seen forming the southern boundary.

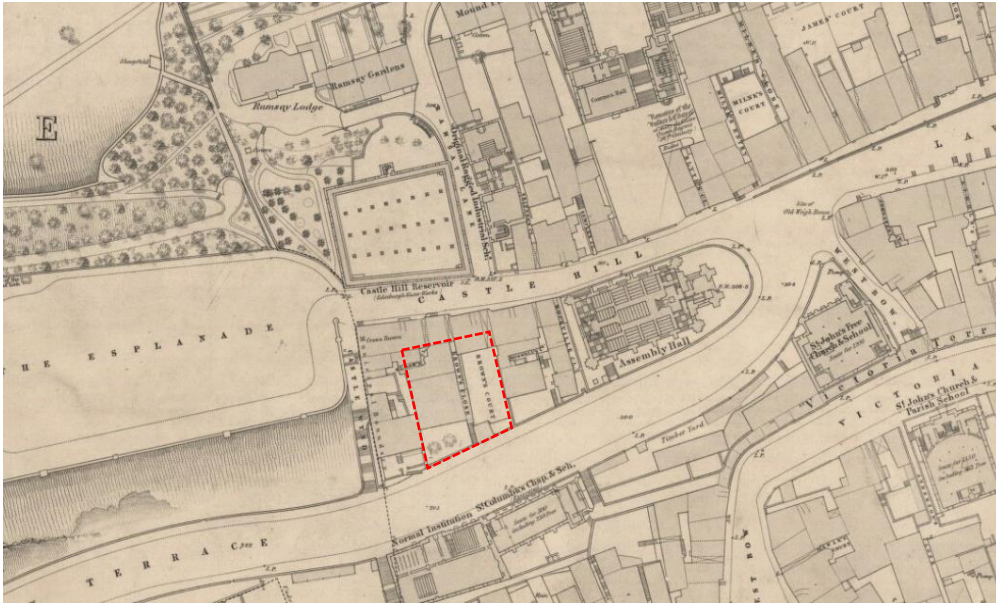


Figure 4 Ordnance Survey First Edition of 1852 © nls

The first edition Ordnance Survey of 1852 (*figure 4*) shows a major development with the construction of Johnston Terrace at the south edge of the site removing the garden areas. As we know, Castlehill School was built 35 years later in 1887, and is depicted together with the playground and janitors house on the Second edition Ordnance Survey of 1894 (*figure 5*). The main buildings and layout of the site have remained unchanged up to the present.



Figure 5 Ordnance Survey large scale town plan sheet 11.7.20 surveyed in 1894 published in 1895 © nls

3. Methodology

Prior to the start of works at Castlehill School, a series of five trial pits were excavated, inside and outside of the building (see *Figure 6*). The trial pits were excavated by the contractors and recorded before being backfilled. The works were undertaken on 11th, 16th and 19th April by Antoine Ruchonnet and included a brief photographic record of the building prior to the start of works.

The main works started with internal stripping and demolition of the partition walls, followed by ground reduction inside of the building. The works were monitored by an archaeologist and were undertaken using a mechanical excavator, fitted with a flat bladed bucket. Any features and structures underneath the formation level of the standing building were recorded before further excavations were conducted. This was done until the required depth was reached. In the north end of the building, however, the natural and bedrock was reached quite early and required no further archaeological involvement. The

Ground breaking works outside of the building were initially undertaken in the Western Courtyard. The same methodology was applied to any down-takings. Further excavation at the Southern Courtyard of the building, including; excavations for a lift shaft were also monitored.



Figure 6 Location of Trial Pits

4. Results

i. Trial Pits

a. Trial Pit 1

Trial Pit 1 was excavated against the western pier of the main range, to the south of the masonry. The pit was dug by the contractors and inspected on the 16th of April 2018 (see *Plate 1* and *Plate 2*). Considering the small size of the pit (1.09m by 0.88m, with a depth of 1.8m) and instability of the section, all recording was done from the top. This trench presented only loose bedding (002) for the concrete surface (001) over three backfill/levelling deposits [(004), (005), and (006)].



Plate 1 Trial Pit 1, General View



Plate 2 Trial Pit 1, West facing Section

b. Trial Pit 2

Trial Pit 2 was excavated against the south-east buttress of the main range, to the south of the masonry. The pit was dug by the contractors and inspected on the 19th of April 2018 (see *Plate 3* and *Plate 4*).

Measuring 1.38m by 1.03m and with a depth of 2m, Trial Pit 2 presented the same configuration as Trial Pit 1, with loose bedding (007) for the concrete surface (001) but over unique though motley backfill/levelling deposit (008).



Plate 3 Trial Pit 2, General View



Plate 4 Trial Pit 3, West facing Section

c. Trial Pit 3

Trial Pit 3 was excavated inside a store room in the east range of the building, to the south of a brick partition wall. The pit was dug by the contractors and inspected on the 19th of April 2018 (see *Plate 5* and *Plate 6*).

Trial Pit 3 measured 1.3m by 0.75m and was quite shallow, only 0.38m. Again a loose rubble deposit (010) was used as bedding for the concrete surface (001). The bottom of the pit exposed the natural subsoil (013). A linear, east-west foundation trench [011] for the foundation of the brick partition wall [012] was cut directly into the natural.



Plate 5 Trial Pit 3, General View



Plate 6 Trial Pit 3, East facing Section

d. Trial Pit 4

Trial Pit 4 was excavated inside the main range of the building, to the south of an east-west partition wall. The pit was dug by the contractors and inspected on the 19th of April 2018 (see *Plate 7* and *Plate 8*).

Trial Pit 4 measured 1.13m by 0.98m and was quite shallow, only 0.31m. There was a concrete pad used as foundation for the brick partition wall [018]. Again, a loose rubble deposit (016) was used as bedding for the concrete surface (014). The latter was different from the concrete surface encountered elsewhere and was poured directly over the concrete pad. It appears that concrete [014] was secondary to concrete (001) and was poured when wall (014) was built. The bedding (016) for the concrete was overlying a clay rich backfill (017).



Plate 7 Trial Pit 4, General View



Plate 8 Trial Pit 4, East facing Section

e. *Trial Pit 5*

Trial Pit 5 was excavated inside the main range of the building, to the west of a north-west load bearing wall. The pit was dug by the contractors and inspected on the 19th of April 2018 (see *Plate 9* and *Plate 10*).

Trial Pit 5 measured 1.04m by 0.83m and 1.07m deep. A loose rubble bedding (018) under the concrete surface (001) overlay two service trenches and their associated fills: a lead pipe (021) and a ceramic sewer pipe (023). Only the cut [020] for the lead pipe was visible. Furthermore, six courses of the foundations [022] of the load bearing wall were exposed.



Plate 9 Trial Pit 5, General View



Plate 10 Trial Pit 5, North facing Section

ii. *Internal works*

Once the concrete floor (001) and partition walls were removed inside the building, archaeological monitoring resumed. The slightly kicked-out rubble foundations of the main school building were exposed.

The east range stripping did not present any features with the exception of a 0.5m foundation cut for the school building cut directly into the natural at the west side. The natural (013) was reached at only 0.4m deep, under the existing concrete surface. The natural was sloping gently to the south.

In the centre of the main range, the same configuration was encountered, with shallow natural exposed. The foundations of a north-south sleeper wall [024] upon which a north-south brick partition wall, were found bedded into natural deposits. It appeared that the sleeper wall was the same as the load bearing wall foundations [022] found in trial pit 5. The sleeper wall [024] was 0.5m at the south end and was exposed to a depth of 0.3m. The sleeper wall was traversed by a ceramic drain, originating from the south-east wall of the main range and connected to an inspection chamber against the wall (see *Plate 11*).

Running alongside the sleeper wall, was a pipe trench [056] for the sewer pipe (023) (as encountered in trial pit 5). Another feature associated with the existing school building was a service trench [025] for a lead pipe (026) running east-west 1.35m from the transverse wall (see *Plate 12*).

A sandstone rectangular foundation [057] was noted under the western central pillar of the main range (see *Plate 13*).



Plate 11 Sleeper Wall [024], showing Break for Ceramic Drain



Plate 12 Service Trench [025] with Lead Pipe (026)



Plate 13 Pillar Sandstone Foundations [057]

A few features predating the erection of the school building were found in the south west area of the main range and into the west range. In the north end of the area, the bedrock was sloping up towards the north-west and the castle. To the south, it appeared that the natural extended to a break in the slope or a cut [036]. To the south, redeposited natural (037) appeared to have been used to level the area for construction. In the south of the main and west range, two earlier walls were uncovered (see *Plate 14* and *Figure 7*).



Plate 14 Walls [031] and [038]

Wall [031] is oriented north-south, west of the existing south east wall of the main range. The school building foundation appears to cut it (see *Plate 15*, *Figure 7* and *Figure 8*). Based on the general aspect of the construction, it seems that this was the foundation courses of the wall.

The construction of wall [031] appears to have been conducted in different stages. First the area was prepared by cutting into the natural (Cut [029]) which was then backfilled by sandy lenses (028) and redeposited natural (027), probably to level the area (see *Plate 16*). The foundation trench [034] was then cut through the two deposits (see *Figure 9*) and backfilled with construction waste material (030) and (035) to the south, including a large lump of concreted mortar.



Plate 15 Wall [031] and showing the West faced cut by the Foundations of the School



Plate 16 Cut [029] with Backfills (027) and (028)

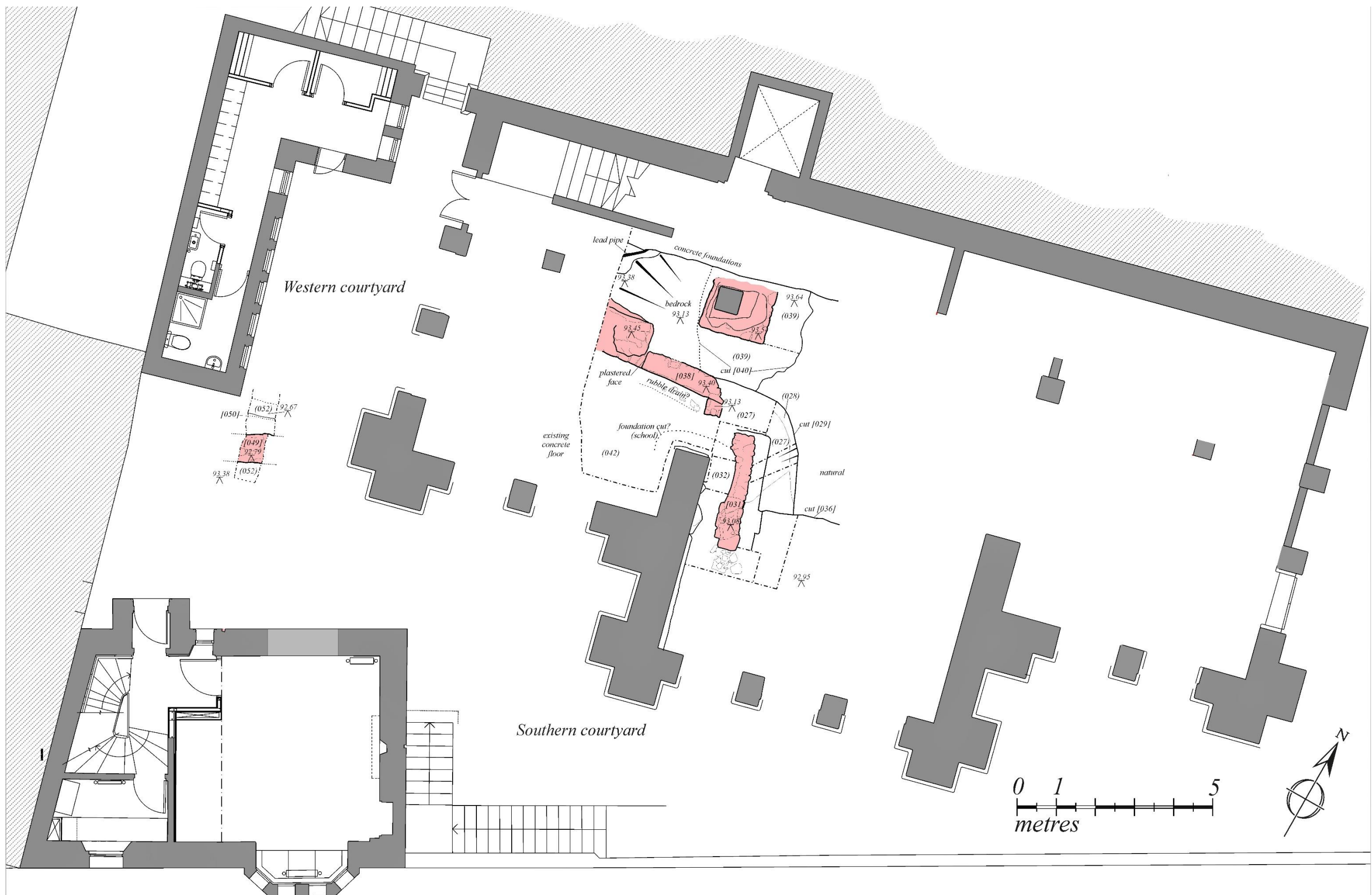


Figure 7 Site plan

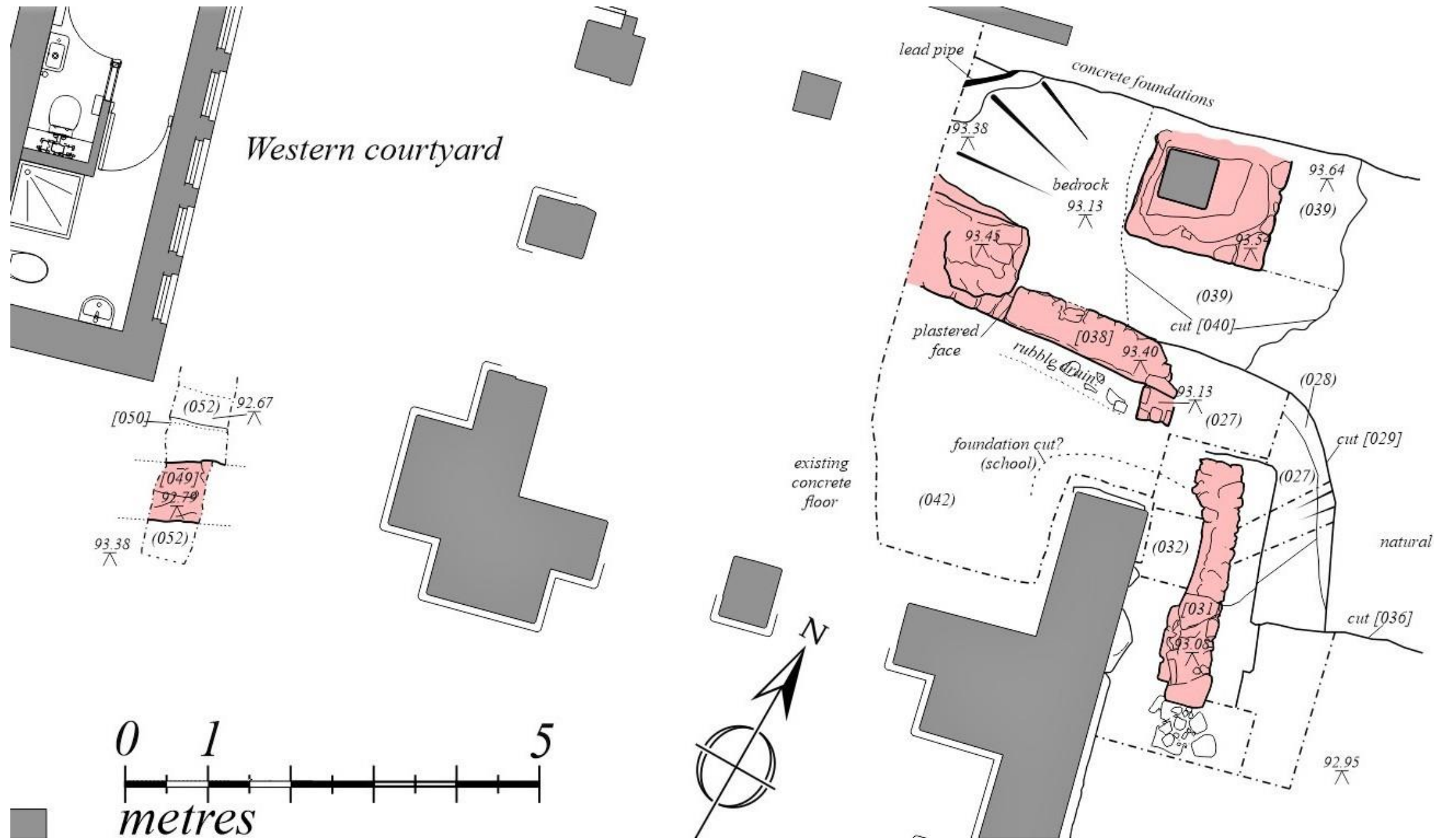


Figure 8 Site plan, Detail

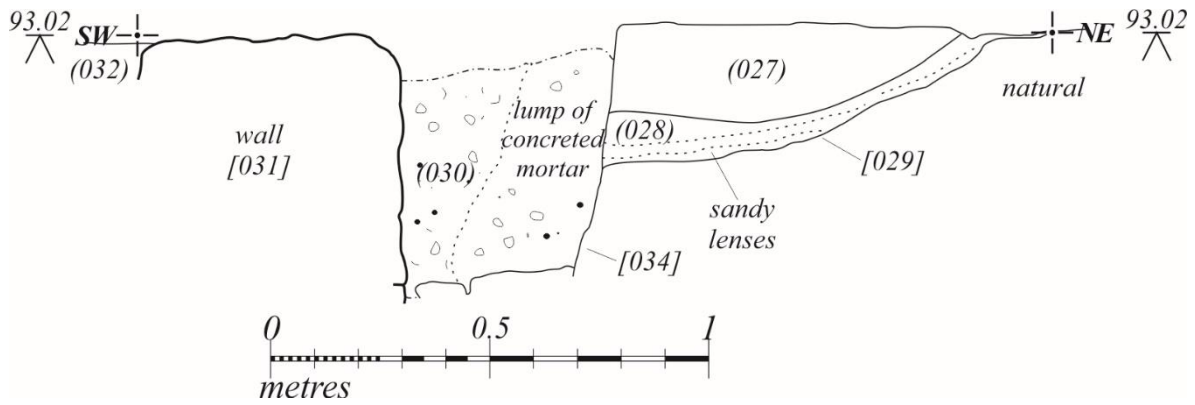


Figure 9 SE facing Section East of Wall [031]

On the west side of Wall [031], the area was heavily disturbed by the construction of the School building. The west face of the wall appears to have been damaged, and presents a jagged aspect (see *Figure 10*). It is backfilled by (033) which produced finds from the second half of the 19th century and the mortar lens is of the same type as the one used on the school walls. Furthermore, the clay deposit (032) is abutting the school wall. All indicating that the west side of the wall has been heavily disturbed by the erection of the school.

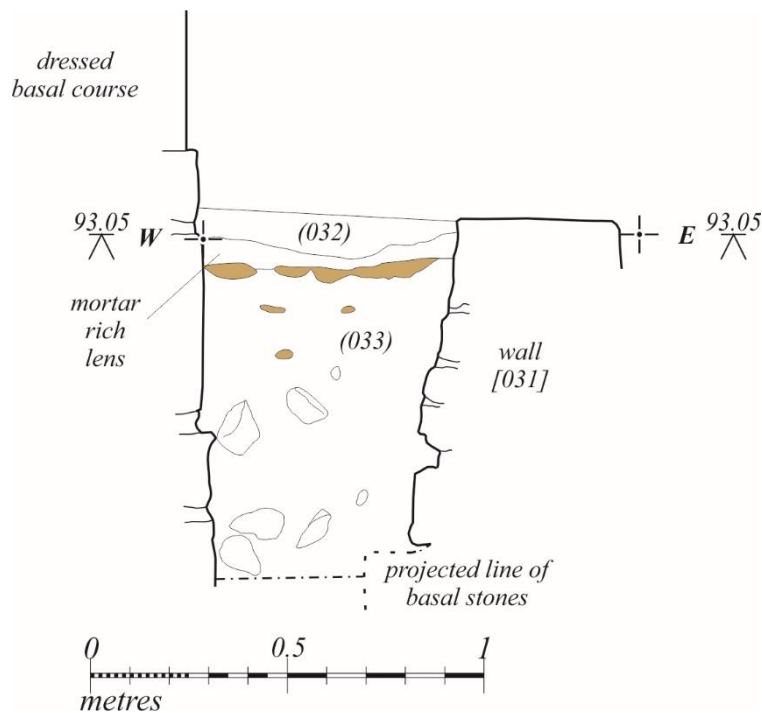


Figure 10 S facing Section West of Wall [031]

Wall [038] is oriented east-west and presents a plastered face to the south (see *Plate 17*), which indicates an upstanding elevation. Considering the depth at which this wall was discovered, it is highly likely that it was a cellar wall. It appears then, that walls [038] and [031] were not part of the same building, but different construction phases, with wall [031] predating wall [038]. To the south of the wall, a small manhole was noted at the east end. This feature might have been connected to the possible rubble drain, running parallel to the south face of the wall (see *Plate 18*)



Plate 17 Wall [038], South Face, showing Plaster



Plate 18 Wall [038], showing the possible Rubble Drain to the right of the Wall

Lastly, a cut [040] was noted in the north-west corner of the main range, filled with compact black clay (039). Its date is unclear.

iii. Western Courtyard

Externally, the down taking works started in the west courtyard, in the area between the West Range of the School Building, the Annex Building and the Janitor's House. The concrete floor (001) was first removed onto a very loose rubble bedding (043). Under the bedding, the whole area was covered with a loose silty sand deposit with a high frequency of medium to large sandstone blocks and fragments (see *Plate 19*) and bitumen patches and occasional clay patches. It appears that this is the backfill of the construction of the School. The previous buildings, as depicted on the OS maps were probably destroyed (as indicated by the sandstone blocks) and the area appears to have been stripped to the natural, at least in some areas, before the same natural material was spread over the area for levelling. Further evidence of this is found in the presence of various drains and metallic pipes for the School building ([045], [047], and [048]), for which installation required the bedrock to be cut [053] in some places or is directly overlaying the natural (054) (see *Plate 20*, *Plate 21*, and *Plate 22*).



Plate 19 Large Sandstone Blocks in (044)



Plate 20 Drains [045] and [048]



Plate 21 Drain [048] showing Cut in Bedrock



Plate 22 Drain [045] and Cut [055]

Despite the terracing and demolition conducted in order to build the School, a short section of an earlier wall was uncovered in the Western Courtyard (see *Figure 12* and *Plate 23*). Wall [049] is made of large sandstone blocks, bonded with beige lime mortar. The wall survives only for a length of 0.90m and a depth of 0.40m. It appears that the full width (0.70m) still survived. The foundations were directly overlying and against the bedrock (*Figure 13*, *Plate 25* and *Plate 26*). A concave cut [050] was found running along the north face of the wall, with a wooden beam lain parallel to the wall in a dark charcoal rich fill (051), this could have been installation for floor joists of the original building (see *Figure 11* and *Plate 24*).



Plate 23 Wall [049] as first exposed



Plate 24 Cut [050] with Wooden Beam

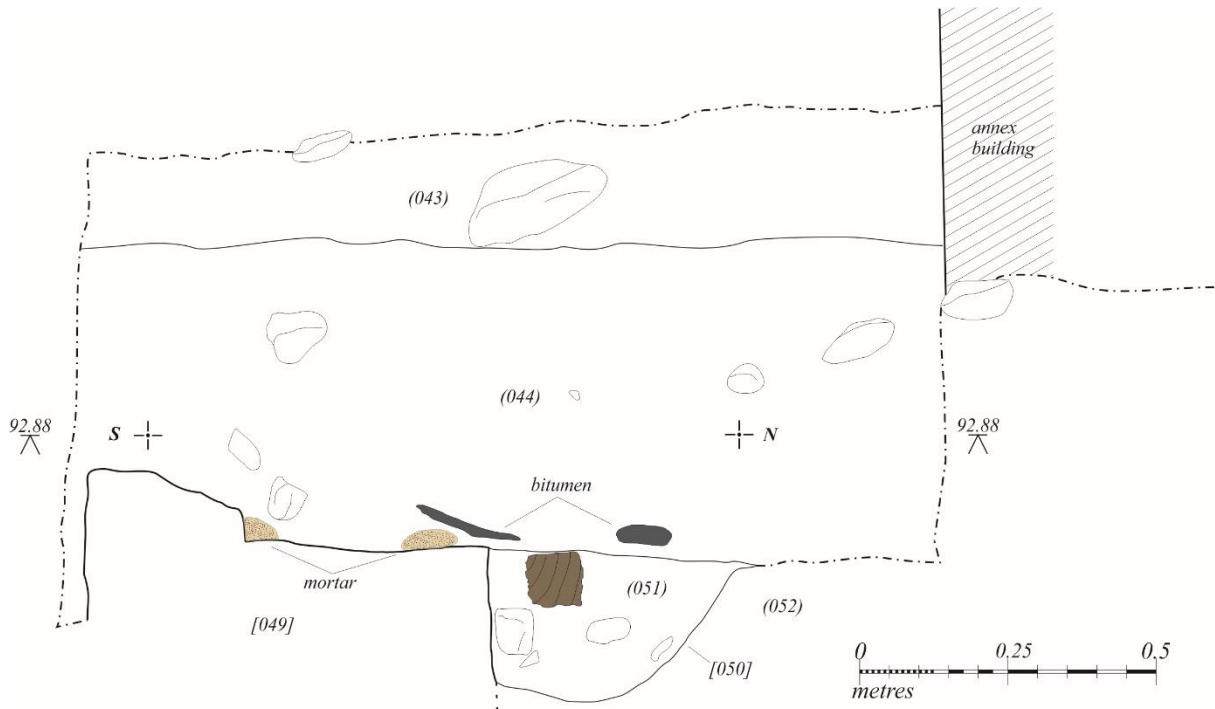


Figure 11 East facing Section of Wall [049] and Cut [050]

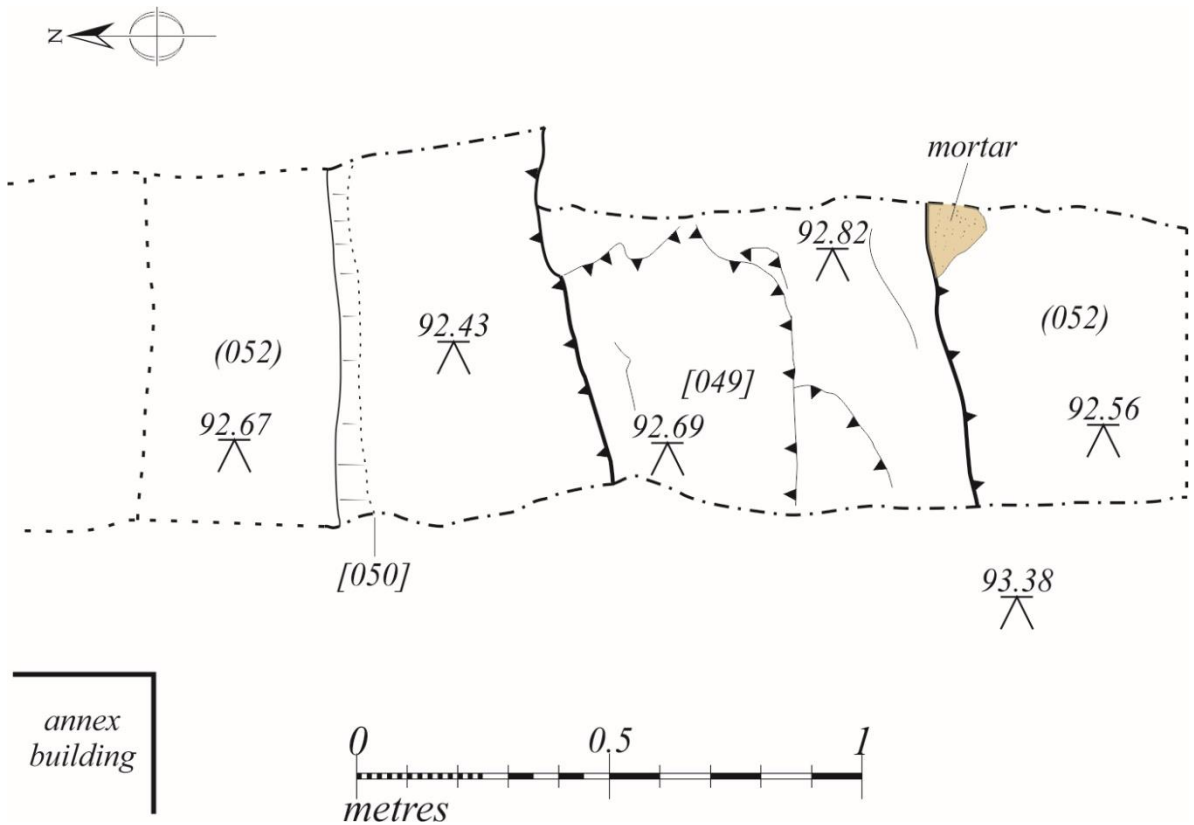


Figure 12 Plan of Wall [049]

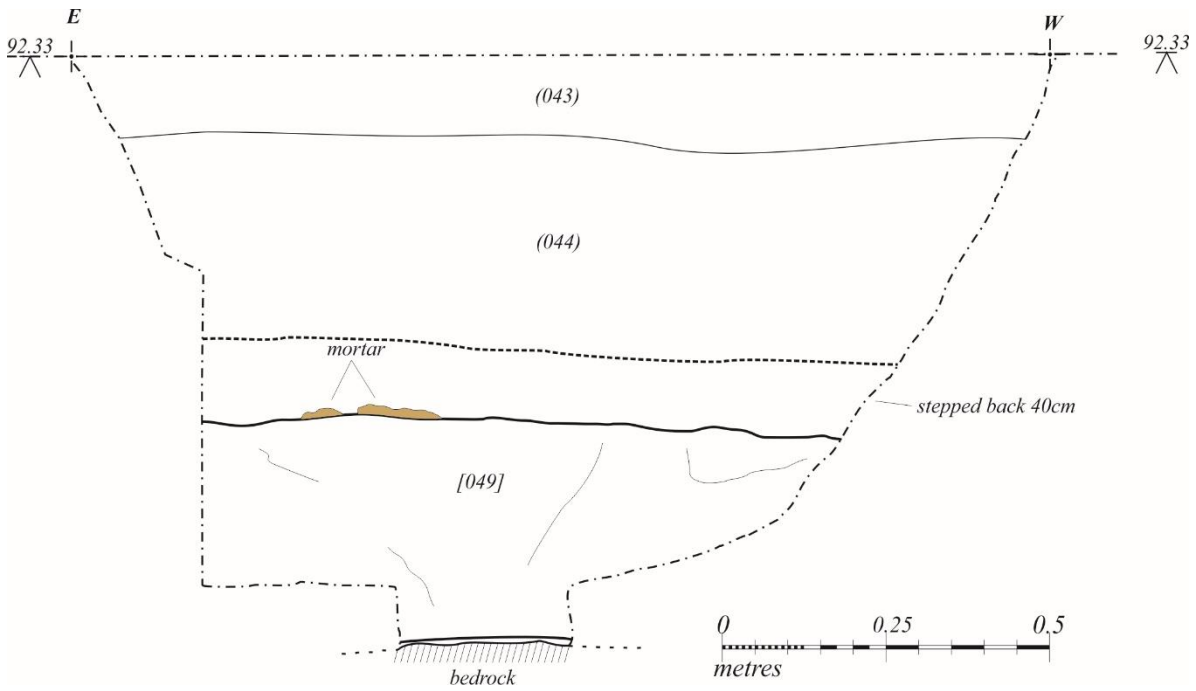


Figure 13 Elevation of Wall [049]



Plate 25 Wall [049] showing Bedrock to the Right



Plate 26 Wall [049] directly lying over Bedrock

iv. Southern Courtyard and Lift Shaft

Further monitoring was undertaken in October 2018 within the southern courtyard. Much of this area had been previously disturbed. The works involved the ground reduction between the southern wall of the building and the retaining wall on to Johnston Terrace. This revealed the foundation courses of the boundary wall to Johnston Terrace (Plate 27) and of the school (Plate 28).

Further excavations revealed the remains of the former steps and masonry walling associated with the present building; no earlier remains were seen (Plate 29 and Plate 30).



Plate 27 View of excavations southern courtyard, school building to N, retaining wall to S



Plate 28 Exposed foundations of school building from southern courtyard excavations



Plate 29 Remains of former steps



Plate 30 General view of excavations of southern courtyard, rubble blocking

5. Finds

Only two artefacts were retained from the works conducted at the Scotch Whisky Experience, an 18th century half penny and a 19th century clay pipe bowl.

The coin was found within fill (051) of cut [050], the possible foundation trench of wall [049]. It is a half penny of George the III (see *Plate 31*) minted in Ireland, as indicated by the cláirseach on the reverse (see *Plate 32*). This particular mint is dated to 1769. It is unclear if this deposition is related to the construction of the wall, the installation or repair of the floor, or if it was simply dropped between two floor boards during the occupation of the house.



Plate 31 SF001, George III Half Penny, Obverse



Plate 32 SF001, George III Half Penny, Reverse

The clay pipe bowl was recovered from the bedding (043) for the concrete in the Western Courtyard. It is a production from J. MacKenzie (see *Plate 33*), pipe maker based in St John's Hill, Edinburgh, between 1864 and 1883. Considering the mixed context in which this find was found, its origin is unclear, whether it was the pipe from one of the inhabitants of the tenements or from one of the workers who broke it during the construction of the school in 1887.

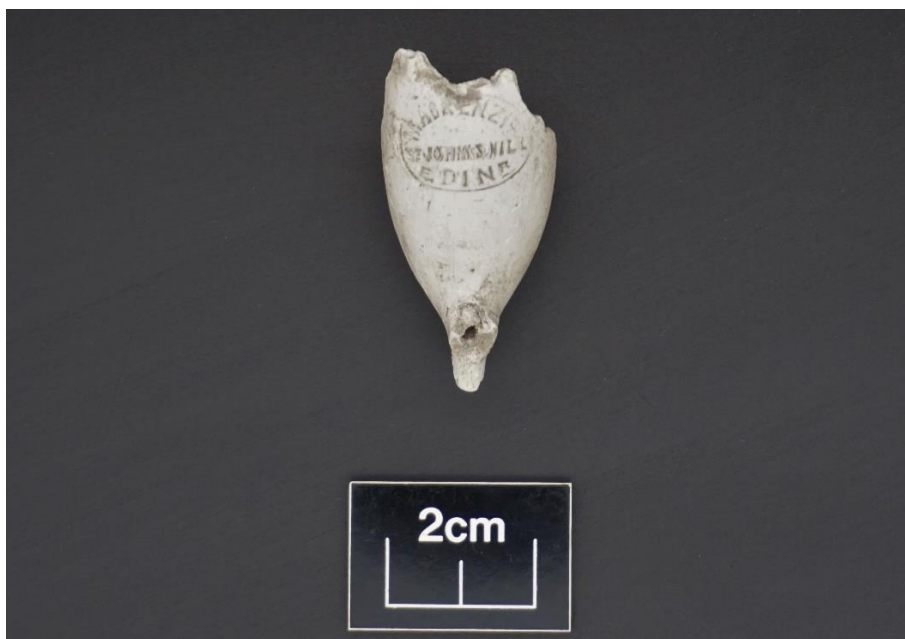


Plate 33 SF002, J. MacKenzie Clay Pipe

6. Discussion

Excavation of the trial pits revealed little evidence for earlier deposits, although the foundations of the north-south load bearing wall were encountered in trial pit 5.

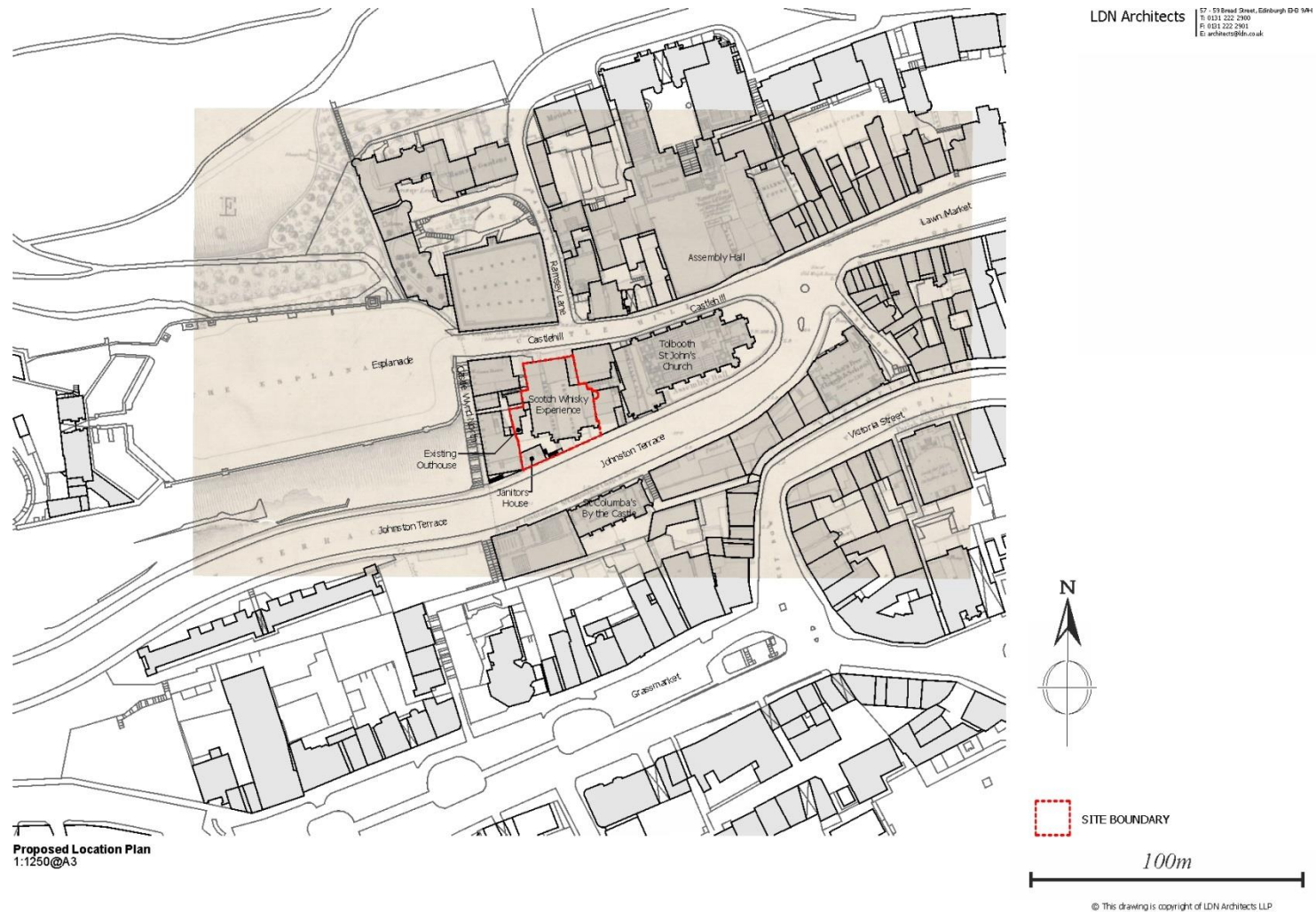
The excavations within the building revealed a number of walls pre-dating the school building. The site plan has been overlaid on to earlier maps in order to compare the walls discovered with mapped buildings (*Figure 14* and *Figure 15*). Edgar's map of 1765 shows a square building at the southern edge of the site, fronting on to what is now Johnston Terrace. At the time, this building was located in a backlands plot to the rear of Castle Hill in front of some laid out gardens, which would later be demolished to make way for the new street. The north-south wall discovered during the excavations is roughly in line with the eastern wall of this building; the return of the excavated wall to the west suggests that these walls may represent the north-east corner of the building as depicted in *Figure 14*.

The closes as depicted on Edgar's map are still in place by the time of the first edition Ordnance Survey map, although the construction of Johnston Terrace has cut through the gardens and caused demolition of some of the buildings. The building from Edgar's map has gone, although the line of the close still follows the same wall, as seen on *Figure 15*. The wall discovered in the western courtyard appears to correspond to an east-west boundary wall on the western side of the site.



Site plan copyright of LDN Architects

Figure 14 Overlay of Edgar's plan of 1765 on to site plan; the walls discovered may correspond to the north-east corner of the building on Johnston terrace



Site plan copyright of LDN Architects

Figure 15 Overlay of OS first edition plan of 1852 on to site plan; the east-west wall in the western courtyard corresponds to a boundary wall on the west, while the north-south wall corresponds to the Close boundary

Appendix A Context Register

| Context No. | Recorded by | Date | Area | Trench | Description | Interpretation |
|-------------|-------------|------------|---------|-------------|---|---------------------|
| (001) | AR | 16/04/2018 | Outside | Trial Pit 1 | Concrete surface | |
| (002) | AR | 16/04/2018 | Outside | Trial Pit 1 | Deposit. Very loose, rubble deposit under concrete (001) | |
| [003] | AR | 16/04/2018 | Outside | Trial Pit 1 | Foundations of south elevation, south west buttress | |
| (004) | AR | 16/04/2018 | Outside | Trial Pit 1 | Deposit. Moderate compaction, mottled grey to reddish-brown, silty clay | Redeposited natural |
| (005) | AR | 16/04/2018 | Outside | Trial Pit 1 | Deposit. Loose to moderate compaction, yellow- brown clayey-sand | |
| (006) | AR | 16/04/2018 | Outside | Trial Pit 1 | Deposit. Loose to moderate compaction, grey- brown clayey-sand | |
| (007) | AR | 19/04/2018 | Outside | Trial Pit 2 | Deposit. Very loose, rubble deposit under concrete (001) | |
| (008) | AR | 19/04/2018 | Outside | Trial Pit 2 | Deposit. Moderate compaction, mottled grey to reddish-brown, silty clay | Redeposited natural |
| [009] | AR | 19/04/2018 | Outside | Trial Pit 2 | Foundations of south elevation, south east buttress | |
| (010) | AR | 19/04/2018 | Inside | Trial Pit 3 | Deposit/Fill. Very loose, rubble deposit under concrete (001) | |
| [011] | AR | 19/04/2018 | Inside | Trial Pit 3 | Cut. Linear E-W cut for foundation of brick wall [012] | |
| [012] | AR | 19/04/2018 | Inside | Trial Pit 3 | Foundation and brick wall | |
| (013) | AR | 19/04/2018 | Inside | Trial Pit 3 | Deposit. Compact reddish brown - grey clay | Natural? |
| (014) | AR | 19/04/2018 | Inside | Trial Pit 4 | Concrete surface over [015] | |
| [015] | AR | 19/04/2018 | Inside | Trial Pit 4 | Concrete pad for wall [018] | |
| (016) | AR | 19/04/2018 | Inside | Trial Pit 4 | Deposit. Very loose, rubble deposit under concrete (014) | |
| (017) | AR | 19/04/2018 | Inside | Trial Pit 4 | Deposit. Compact brownish beige to black clay | |
| [018] | AR | 19/04/2018 | Inside | Trial Pit 4 | Wall. E-W brick wall | |
| (019) | AR | 19/04/2018 | Inside | Trial Pit 5 | Deposit. Very loose, rubble deposit under concrete (001) | |
| [020] | AR | 19/04/2018 | Inside | Trial Pit 5 | Cut. Linear N-S cut for lead pipe, filled by (021) | |
| (021) | AR | 19/04/2018 | Inside | Trial Pit 5 | Fill of [020]. Loose to moderate compaction, mid brown silty sand and lead pipe | |
| [022] | AR | 19/04/2018 | Inside | Trial Pit 5 | Foundation of N-S load-bearing wall | |
| (023) | AR | 19/04/2018 | Inside | Trial Pit 5 | Fill. Compact grey clay and ceramic sewer pipe | |
| [024] | PK | 24/05/2018 | Inside | - | N-S linear sleeper wall | |
| [025] | PK | 24/05/2018 | Inside | - | Cut. Linear E-W cut for service trench with a Fe/Pb pipe | |
| (026) | PK | 24/05/2018 | Inside | - | Fill of [025]. Loose, dark grey -brown silty clay. | |
| (027) | PK | 28/05/2018 | Inside | - | Fill of [029]. Moderate compaction, upper grey-green clay, east of wall [031] | |
| (028) | PK | 28/05/2018 | Inside | - | Fill of [029]. Loose, yellow sand lense below (027) | |
| [029] | PK | 28/05/2018 | Inside | - | Cut. Sub-circular cut, filled by (027) and (028) | |
| (030) | PK | 28/05/2018 | Inside | - | Fill of [034]. Very coarse lime mortar | |
| [031] | PK | 28/05/2018 | Inside | - | Linear N-S wall | |

| Context No. | Recorded by | Date | Area | Trench | Description | Interpretation |
|-------------|-------------|------------|----------------|--------|--|-----------------------|
| (032) | PK | 28/05/2018 | Inside | - | Deposit. Moderate compaction, upper greyish-green clay on west side of wall [031]. Abuts the school wall | |
| (033) | PK | 28/05/2018 | Inside | - | Deposit. Loose, coarse, orangey-brown, mortar rich, gritty silt with green clay lumps, underlying (032) | |
| [034] | PK | 29/05/2018 | Inside | - | Cut. Linear cut, filled by (030) and (035) | |
| (035) | PK | 29/05/2018 | Inside | - | Fill of [034]. Loose, mid orangey-brown gritty silt, with frequent mortar flecks | |
| [036] | PK | 29/05/2018 | Inside | - | Cut. Linear E-W cut to south, filled by (037) | |
| (037) | PK | 29/05/2018 | Inside | - | Fill of [036]. Compact, mixed, mid greyish clay with rubble, brick, mortar, etc., south of and filling [036] | |
| [038] | PK | 29/05/2018 | Inside | - | Linear E-W wall to north of wall [031] | |
| (039) | PK | 30/05/2018 | Inside | - | Deposit. Compact, black clay in NW | |
| [040] | PK | 30/05/2018 | Inside | - | Cut. Filled by (039) in NW | |
| (041) | PK | 30/05/2018 | Inside | - | Deposit. Loose, rubble and gritty silts, south of wall [038] | |
| (042) | PK | 30/05/2018 | Inside | - | Deposit. Compact, clayey horizon below (041), mostly unexcavated, at formation level | |
| (043) | AR | 14/06/2018 | West Courtyard | - | Deposit. Very loose rubble under (001) with small to medium stones, occasional brick and ceramic pipe fragments | Similar/same as (002) |
| (044) | AR | 14/06/2018 | West Courtyard | - | Deposit. Loose, grey-brown silty sand under (043), with small to large sub-angular stones, brick, ceramic pipe fragments, reddish-green clay patches and some bitumen lenses | |
| [045] | AR | 15/06/2018 | West Courtyard | - | Ceramic drain. Linear, N-S, ceramic drain, from the downpipe on the annex building to the manhole [046] | |
| [046] | AR | 15/06/2018 | West Courtyard | - | Manhole. Unbonded brick and concrete capped manhole, drain [045] and pipe [047] are connected to it | |
| [047] | AR | 15/06/2018 | West Courtyard | - | Iron pipe. Iron linear NW-SE pipe, from manhole [046] to the corner of the annex building downpipe | |
| [048] | AR | 15/06/2018 | West Courtyard | - | Ceramic drain. Linear, NW-SE, joins with [045] | |
| [049] | AR | 15/06/2018 | West Courtyard | - | Wall. Linear, E-W, stone and mortar wall, the foundation are directly upon the carved bedrock | |
| [050] | AR | 15/06/2018 | West Courtyard | - | Cut. Unknown shape (parallel to wall [049]?), steep and flat, cut, filled by (051) | Abuts wall [049] |
| (051) | AR | 15/06/2018 | West Courtyard | - | Fill of [050]. Loose, black-grey gritty silt with 1 wooden beam (square section, 15cm) and mortar flecks | |
| (052) | AR | 15/06/2018 | West Courtyard | - | Deposit. Moderate compaction, pale brown yellow, silty clay, with occasional small sub-angular stones | |
| [053] | AR | 18/06/2018 | West Courtyard | - | Cut. Linear cut for drain [045], vertical, flat into the bedrock | |

| <i>Context No.</i> | <i>Recorded by</i> | <i>Date</i> | <i>Area</i> | <i>Trench</i> | <i>Description</i> | <i>Interpretation</i> |
|---------------------------|---------------------------|--------------------|--------------------|----------------------|---|------------------------------|
| (054) | AR | 18/06/2018 | West Courtyard | - | Natural. Compact, red-green clay, under (052) and over the bedrock | |
| [055] | AR | 18/06/2018 | West Courtyard | - | Ceramic drain. Linear, NW-SE, drain fragment, appears in situ but broken and out of use | |

Appendix B Drawings Register

| <i>Drawing No.</i> | <i>Scale</i> | <i>Type</i> | <i>Date</i> | <i>Drawn by</i> | <i>Description</i> |
|--------------------|--------------|-------------|-------------|-----------------|---|
| 1 | 1:10 | Section | 16/04/2018 | AR | Trial Pit 1, south facing section |
| 2 | 1:10 | Section | 16/04/2018 | AR | Trial Pit 1, west facing section |
| 3 | 1:10 | Section | 19/04/2018 | AR | Trial Pit 2, south facing section |
| 4 | 1:10 | Section | 19/04/2018 | AR | Trial Pit 2, west facing section |
| 5 | 1:10 | Section | 19/04/2018 | AR | Trial Pit 3, east facing section |
| 6 | 1:10 | Section | 19/04/2018 | AR | Trial Pit 5, north facing section |
| 7 | 1:50 | Plan | 30/05/2018 | PK | Plan of archaeological features in NW |
| 8 | 1:20 | Section | 30/05/2018 | PK | South facing section, west of wall [031] |
| 9 | 1:20 | Section | 30/05/2018 | PK | South-east facing section, east of wall [031] |
| 10 | 1:10 | Section | 15/06/2018 | AR | East facing section of wall [049] and cut [050] |
| 11 | 1:20 | Plan | 15/06/2018 | AR | Plan of wall [049] |
| 12 | 1:10 | Section | 18/06/2018 | AR | North facing section along wall [049] |

Appendix C *Samples Register*

| <i>Sample No.</i> | <i>Context No.</i> | <i>Size</i> | <i>Date</i> | <i>Initials</i> | <i>Description</i> |
|-------------------|--------------------|-------------|-------------|-----------------|---|
| 001 | 030 | 1 Small Bag | 28/05/2018 | PK | Very coarse lime mortar, fill of foundation trench for wall [031] |
| 002 | 038 | 1 Small Bag | 30/05/2018 | PK | Wall plaster, south face of wall [038] |
| 003 | 051 | 1 Small Bag | 15/06/2018 | AR | Fill (051) of cut [050], with wood beam |
| 004 | 049 | 1 Small Bag | 15/06/2018 | AR | Mortar from wall [049] |

Appendix D Photograph Register

| Image Number | Direction Facing | Date | Description | Initials |
|---------------------|-------------------------|-------------|--|-----------------|
| 001 | NW | 11/04/2018 | Site visit, pre-ex, general view | AR |
| 002 | W | 11/04/2018 | Site visit, pre-ex, general view | AR |
| 003 | NW | 11/04/2018 | Site visit, pre-ex, general view | AR |
| 004 | N/Vert. | 11/04/2018 | Site visit, pre-ex, general view | AR |
| 005 | W | 11/04/2018 | Site visit, pre-ex, general view | AR |
| 006 | W | 11/04/2018 | Site visit, concrete stairs at the back of site | AR |
| 007 | E | 11/04/2018 | Site visit, Trial Pit 1, pre-ex | AR |
| 008 | N | 16/04/2018 | Trial Pit 1, post-ex, general view | AR |
| 009 | N | 16/04/2018 | Trial Pit 1, south facing section | AR |
| 010 | W | 16/04/2018 | Trial Pit 1, east facing section | AR |
| 011 | E | 16/04/2018 | Trial Pit 1, west facing section | AR |
| 012 | S | 16/04/2018 | Trial Pit 1, north facing section | AR |
| 013 | SE | 16/04/2018 | Trial Pit 1, south-west corner | AR |
| 014 | N | 16/04/2018 | Trial Pit 1, location | AR |
| 015 | NE | 16/04/2018 | Trial Pit 1, location | AR |
| 016 | NE | 16/04/2018 | Trial Pit 1, north-west corner | AR |
| 017 | E | 16/04/2018 | Trial Pit 1, west facing section without ranging rod | AR |
| 018 | E | 16/04/2018 | Trial Pit 1, west facing section without ranging rod | AR |
| 019 | E | 16/04/2018 | Trial Pit 1, west facing section | AR |
| 020 | N | 16/04/2018 | Trial Pit 1, south facing section, composite | AR |
| 021 | N | 16/04/2018 | Trial Pit 1, south facing section, composite | AR |
| 022 | N | 16/04/2018 | Trial Pit 1, south facing section, composite | AR |
| 023 | N | 16/04/2018 | Trial Pit 1, south facing section, composite | AR |
| 024 | N | 16/04/2018 | Trial Pit 1, south facing section, composite | AR |
| 025 | - | 16/04/2018 | Historic Building Recording, west entrance | AR |
| 026 | - | 16/04/2018 | Historic Building Recording, west entrance | AR |
| 027 | - | 16/04/2018 | Historic Building Recording, interior | AR |
| 028 | - | 16/04/2018 | Historic Building Recording, interior | AR |
| 029 | - | 16/04/2018 | Historic Building Recording, interior | AR |
| 030 | - | 16/04/2018 | Historic Building Recording, interior | AR |
| 031 | - | 16/04/2018 | Historic Building Recording, interior | AR |
| 032 | - | 16/04/2018 | Historic Building Recording, interior | AR |
| 033 | - | 16/04/2018 | Historic Building Recording, interior | AR |
| 034 | - | 16/04/2018 | Historic Building Recording, interior | AR |
| 035 | - | 16/04/2018 | Historic Building Recording, interior | AR |
| 036 | - | 16/04/2018 | Historic Building Recording, interior | AR |
| 037 | - | 16/04/2018 | Historic Building Recording, interior | AR |
| 038 | - | 16/04/2018 | Historic Building Recording, interior | AR |
| 039 | - | 16/04/2018 | Historic Building Recording, interior | AR |
| 040 | - | 16/04/2018 | Historic Building Recording, interior | AR |
| 041 | - | 16/04/2018 | Historic Building Recording, interior | AR |
| 042 | - | 16/04/2018 | Historic Building Recording, interior | AR |
| 043 | - | 16/04/2018 | Historic Building Recording, interior | AR |
| 044 | - | 16/04/2018 | Historic Building Recording, interior | AR |
| 045 | - | 16/04/2018 | Historic Building Recording, interior | AR |
| 046 | - | 16/04/2018 | Historic Building Recording, interior | AR |
| 047 | - | 16/04/2018 | Historic Building Recording, interior | AR |
| 048 | - | 16/04/2018 | Historic Building Recording, interior | AR |

| Image Number | Direction Facing | Date | Description | Initials |
|---------------------|-------------------------|-------------|--|-----------------|
| 049 | - | 16/04/2018 | Historic Building Recording, interior | AR |
| 050 | - | 16/04/2018 | Historic Building Recording, interior | AR |
| 051 | - | 16/04/2018 | Historic Building Recording, interior | AR |
| 052 | - | 16/04/2018 | Historic Building Recording, interior | AR |
| 053 | - | 16/04/2018 | Historic Building Recording, interior | AR |
| 054 | - | 16/04/2018 | Historic Building Recording, interior | AR |
| 055 | - | 16/04/2018 | Historic Building Recording, interior | AR |
| 056 | - | 16/04/2018 | Historic Building Recording, interior | AR |
| 057 | - | 16/04/2018 | Historic Building Recording, interior, wall scar, detail | AR |
| 058 | - | 16/04/2018 | Historic Building Recording, interior, wall scar, detail | AR |
| 059 | - | 16/04/2018 | Historic Building Recording, interior, wall scar, detail | AR |
| 060 | - | 16/04/2018 | Historic Building Recording, interior | AR |
| 061 | - | 16/04/2018 | Historic Building Recording, exterior | AR |
| 062 | - | 16/04/2018 | Historic Building Recording, exterior | AR |
| 063 | - | 16/04/2018 | Historic Building Recording, exterior | AR |
| 064 | - | 16/04/2018 | Historic Building Recording, exterior | AR |
| 065 | - | 16/04/2018 | Historic Building Recording, exterior | AR |
| 066 | - | 16/04/2018 | Historic Building Recording, exterior | AR |
| 067 | - | 16/04/2018 | Historic Building Recording, exterior | AR |
| 068 | - | 16/04/2018 | Historic Building Recording, exterior | AR |
| 069 | - | 16/04/2018 | Historic Building Recording, exterior | AR |
| 070 | - | 16/04/2018 | Historic Building Recording, exterior | AR |
| 071 | - | 16/04/2018 | Historic Building Recording, exterior | AR |
| 072 | - | 16/04/2018 | Historic Building Recording, exterior | AR |
| 073 | - | 16/04/2018 | Historic Building Recording, exterior | AR |
| 074 | - | 16/04/2018 | Historic Building Recording, exterior | AR |
| 075 | - | 16/04/2018 | Historic Building Recording, exterior | AR |
| 076 | - | 16/04/2018 | Historic Building Recording, exterior | AR |
| 077 | N | 16/04/2018 | Pre-ex, general view, west to east | AR |
| 078 | N | 16/04/2018 | Pre-ex, general view, west to east | AR |
| 079 | N | 16/04/2018 | Pre-ex, general view, west to east | AR |
| 080 | N | 16/04/2018 | Pre-ex, general view, west to east | AR |
| 081 | N | 16/04/2018 | Pre-ex, general view, west to east | AR |
| 082 | N | 16/04/2018 | Pre-ex, general view, west to east | AR |
| 083 | W | 16/04/2018 | Pre-ex, general view | AR |
| 084 | N | 19/04/2018 | Trial Pit 2, location | AR |
| 085 | W | 19/04/2018 | Trial Pit 2, location | AR |
| 086 | N | 19/04/2018 | Trial Pit 2, post-ex, general view | AR |
| 087 | E | 19/04/2018 | Trial Pit 2, post-ex, general view | AR |
| 088 | W | 19/04/2018 | Trial Pit 2, post-ex, general view | AR |
| 089 | N | 19/04/2018 | Trial Pit 2, south facing section | AR |
| 090 | N | 19/04/2018 | Trial Pit 2, south facing section | AR |
| 091 | W | 19/04/2018 | Trial Pit 2, east facing section | AR |
| 092 | NE | 19/04/2018 | Trial Pit 2, north east corner | AR |
| 093 | E | 19/04/2018 | Trial Pit 2, west facing section, general view | AR |
| 094 | E | 19/04/2018 | Trial Pit 2, west facing section, detail | AR |
| 095 | NE | 19/04/2018 | Trial Pit 3, location | AR |
| 096 | NE | 19/04/2018 | Trial Pit 3, location | AR |
| 097 | N | 19/04/2018 | Trial Pit 3, post-ex, general view | AR |
| 098 | N/Vert. | 19/04/2018 | Trial Pit 3, post-ex, general view | AR |
| 099 | E | 19/04/2018 | Trial Pit 3, post-ex, general view | AR |

| <i>Image Number</i> | <i>Direction Facing</i> | <i>Date</i> | <i>Description</i> | <i>Initials</i> |
|---------------------|-------------------------|-------------|---|-----------------|
| 100 | E | 19/04/2018 | Trial Pit 3, post-ex, general view | AR |
| 101 | N | 19/04/2018 | Trial Pit 3, south facing section | AR |
| 102 | E | 19/04/2018 | Trial Pit 3, west facing section | AR |
| 103 | W | 19/04/2018 | Trial Pit 3, east facing section | AR |
| 104 | W | 19/04/2018 | Trial Pit 3, east facing section | AR |
| 105 | S | 19/04/2018 | Trial Pit 3, north facing section | AR |
| 106 | N/Up | 19/04/2018 | Trial Pit 3, brick wall, detail | AR |
| 107 | N/Up | 19/04/2018 | Trial Pit 3, brick wall, detail | AR |
| 108 | W | 19/04/2018 | Trial Pit 4, location | AR |
| 109 | W | 19/04/2018 | Trial Pit 4, location | AR |
| 110 | W/Vert. | 19/04/2018 | Trial Pit 4, post-ex, general view | AR |
| 111 | N | 19/04/2018 | Trial Pit 4, post-ex, general view | AR |
| 112 | N/Vert. | 19/04/2018 | Trial Pit 4, post-ex, general view | AR |
| 113 | E | 19/04/2018 | Trial Pit 4, post-ex, general view | AR |
| 114 | N | 19/04/2018 | Trial Pit 4, south facing section | AR |
| 115 | E | 19/04/2018 | Trial Pit 4, west facing section | AR |
| 116 | W | 19/04/2018 | Trial Pit 4, east facing section | AR |
| 117 | W | 19/04/2018 | Trial Pit 4, east facing section | AR |
| 118 | NE | 19/04/2018 | Trial Pit 5, location | AR |
| 119 | E | 19/04/2018 | Trial Pit 5, post-ex, general view | AR |
| 120 | E/Vert. | 19/04/2018 | Trial Pit 5, post-ex, general view | AR |
| 121 | S | 19/04/2018 | Trial Pit 5, post-ex, general view | AR |
| 122 | N | 19/04/2018 | Trial Pit 5, post-ex, general view | AR |
| 123 | S | 19/04/2018 | Trial Pit 5, north facing section | AR |
| 124 | S | 19/04/2018 | Trial Pit 5, north facing section, without ranging rod | AR |
| 125 | E | 19/04/2018 | Trial Pit 5, west facing section | AR |
| 126 | E | 19/04/2018 | Trial Pit 5, west facing section | AR |
| 127 | - | 24/05/2018 | General internal views after the concrete floor broken out | PK |
| 128 | - | 24/05/2018 | General internal views after the concrete floor broken out | PK |
| 129 | - | 24/05/2018 | General internal views after the concrete floor broken out | PK |
| 130 | - | 24/05/2018 | General internal views after the concrete floor broken out | PK |
| 131 | - | 24/05/2018 | General internal views after the concrete floor broken out | PK |
| 132 | - | 24/05/2018 | General internal views after the concrete floor broken out | PK |
| 133 | - | 24/05/2018 | General internal views after the concrete floor broken out | PK |
| 134 | - | 24/05/2018 | General internal views after the concrete floor broken out | PK |
| 135 | - | 24/05/2018 | General internal views after the concrete floor broken out | PK |
| 136 | - | 24/05/2018 | General internal views after the concrete floor broken out | PK |
| 137 | - | 24/05/2018 | General internal views after the concrete floor broken out | PK |
| 138 | - | 24/05/2018 | General internal views after the concrete floor broken out | PK |
| 139 | - | 24/05/2018 | General internal views after the concrete floor broken out | PK |
| 140 | - | 24/05/2018 | General internal views after the concrete floor broken out | PK |
| 141 | S | 24/05/2018 | Sleeper wall [024], general view | PK |
| 142 | S | 24/05/2018 | Sleeper wall [024], general view | PK |
| 143 | S | 24/05/2018 | Sleeper wall [024] | PK |
| 144 | S | 24/05/2018 | Sleeper wall [024], south end, detail | PK |
| 145 | N | 24/05/2018 | Sleeper wall [024], north end, general view | PK |
| 146 | N | 24/05/2018 | Sleeper wall [024], north end, general view | PK |
| 147 | S | 24/05/2018 | Wall and foundations, east side, general view | PK |
| 148 | NE | 24/05/2018 | East wall and foundations, [024] in foreground, general view | PK |
| 149 | N | 24/05/2018 | Wall foundations, north end, with kicked out course, general view | PK |

| Image Number | Direction Facing | Date | Description | Initials |
|---------------------|-------------------------|-------------|---|-----------------|
| 150 | N | 24/05/2018 | Wall foundations, north end, with kicked out course, general view | PK |
| 151 | W | 24/05/2018 | Removed stair case at far NE corner | PK |
| 152 | W | 24/05/2018 | Removed stair case at far NE corner | PK |
| 153 | N | 24/05/2018 | E-W service trench [025] | PK |
| 154 | N | 24/05/2018 | E-W service trench [025], west end, detail | PK |
| 155 | N | 24/05/2018 | E-W service trench [025], west end, detail | PK |
| 156 | W | 24/05/2018 | Drain [025], east facing section | PK |
| 157 | W | 24/05/2018 | Drain [025], east facing section | PK |
| 158 | E | 24/05/2018 | Interior, east end, stripped to natural | PK |
| 159 | E | 24/05/2018 | Interior, east end, stripped to natural | PK |
| 160 | E | 24/05/2018 | East elevation, north end | PK |
| 161 | E | 24/05/2018 | East elevation, centre | PK |
| 162 | E | 24/05/2018 | East elevation, south end | PK |
| 163 | N | 24/05/2018 | Interior, east end, stripped to natural | PK |
| 164 | N | 24/05/2018 | Interior, east end, stripped to natural | PK |
| 165 | W | 24/05/2018 | Interior, east end, stripped to natural | PK |
| 166 | NW | 24/05/2018 | Interior, east end, stripped to natural | PK |
| 167 | W | 24/05/2018 | West wall, central bay, protruding foundation stone | PK |
| 168 | W | 24/05/2018 | West wall, central bay, protruding foundation stone | PK |
| 169 | W | 24/05/2018 | West wall, central bay, protruding foundation stone | PK |
| 170 | N | 25/05/2018 | Wall [024], general view | PK |
| 171 | W | 25/05/2018 | Wall [024], east elevation, north end | PK |
| 172 | S | 25/05/2018 | Wall [024], general view | PK |
| 173 | S | 25/05/2018 | Wall [024], general view | PK |
| 174 | S | 25/05/2018 | Wall [024], general view | PK |
| 175 | W | 25/05/2018 | Wall [024], E-W drain at south end | PK |
| 176 | NE | 25/05/2018 | Wall [024], general view | PK |
| 177 | NE | 25/05/2018 | Wall [024], general view | PK |
| 178 | E | 25/05/2018 | Wall [024], south end | PK |
| 179 | E | 25/05/2018 | Wall [024], west elevation and drain | PK |
| 180 | NW | 25/05/2018 | Working shot of emerging features | PK |
| 181 | W | 25/05/2018 | Working shot of emerging features | PK |
| 182 | W | 25/05/2018 | Wall and coarse lime mortar deposit, detail | PK |
| 183 | W | 25/05/2018 | South end, wall | PK |
| 184 | NW | 25/05/2018 | Section through redeposited natural and sand | PK |
| 185 | SW | 25/05/2018 | Emerging archaeology, general view | PK |
| 186 | SW | 25/05/2018 | Emerging archaeology, general view | PK |
| 187 | S | 25/05/2018 | Emerging archaeology, general view | PK |
| 188 | W | 25/05/2018 | Northern wall, working shot | PK |
| 189 | W | 25/05/2018 | Foundations or early wall below column, working shot | PK |
| 190 | W | 25/05/2018 | Foundations or early wall below column, working shot | PK |
| 191 | N | 28/05/2018 | Wall [031] and slot to east, general view | PK |
| 192 | NW | 28/05/2018 | Wall [031] and slot to east, general view | PK |
| 193 | NW | 28/05/2018 | Slot through (027) and (028), SE facing section | PK |
| 194 | NW | 28/05/2018 | Slot through (027) and (028), SE facing section | PK |
| 195 | NW | 28/05/2018 | Slot through (027) and (028), SE facing section | PK |
| 196 | SW | 28/05/2018 | Slot to the east of wall [031], general view | PK |
| 197 | SE | 28/05/2018 | Slot through (027) and (028), NW facing section | PK |
| 198 | SE | 28/05/2018 | Slot through (027) and (028), NW facing section | PK |
| 199 | NE/Vert. | 28/05/2018 | Slot to the east of wall [031], general view | PK |

| Image Number | Direction Facing | Date | Description | Initials |
|---------------------|-------------------------|-------------|--|-----------------|
| 200 | N | 28/05/2018 | Wall [031], mid-ex, general view | PK |
| 201 | NW | 28/05/2018 | Wall [031], mid-ex, general view | PK |
| 202 | W | 28/05/2018 | Wall [031], mid-ex, general view | PK |
| 203 | S | 28/05/2018 | Wall [031], mid-ex, general view | PK |
| 204 | S | 28/05/2018 | Wall [031], mid-ex, south end, general view | PK |
| 205 | N | 28/05/2018 | Wall [031], mid-ex, general view | PK |
| 206 | W | 28/05/2018 | Wall [031], mid-ex, general view | PK |
| 207 | Vert. | 28/05/2018 | Wall [031], south end, with truncated post setting? | PK |
| 208 | N | 29/05/2018 | Wall [031], general view | PK |
| 209 | N | 29/05/2018 | Wall [031], general view | PK |
| 210 | W | 29/05/2018 | Wall [031] and surrounding area, general view | PK |
| 211 | W | 29/05/2018 | Wall [031], south and central sections | PK |
| 212 | W | 29/05/2018 | Wall [031], central sections | PK |
| 213 | W | 29/05/2018 | Wall [031], central and north sections | PK |
| 214 | S | 29/05/2018 | Wall [031] and surrounding area, general view | PK |
| 215 | W | 29/05/2018 | Wall [031], south end and east facing elevation of school building wall | PK |
| 216 | W | 29/05/2018 | School building wall, east facing elevation | PK |
| 217 | W | 29/05/2018 | School building wall, east facing elevation and wall [031] in foreground | PK |
| 218 | W | 29/05/2018 | School building wall, east facing elevation and wall [031] in foreground | PK |
| 219 | NW | 29/05/2018 | School building wall and wall [031], general view | PK |
| 220 | NW | 29/05/2018 | School building wall and wall [031], general view | PK |
| 221 | N | 29/05/2018 | Wall [031], west face | PK |
| 222 | N | 29/05/2018 | Wall [031], west face | PK |
| 223 | N | 29/05/2018 | Area west of wall [031], with (032) and (033), south facing section | PK |
| 224 | N | 29/05/2018 | Area west of wall [031], with (032) and (033), south facing section | PK |
| 225 | N | 29/05/2018 | Area west of wall [031], with (032) and (033), south facing section | PK |
| 226 | N | 29/05/2018 | Area west of wall [031], with (032) and (033), south facing section | PK |
| 227 | S/Vert. | 29/05/2018 | Wall [031], west face | PK |
| 228 | S/Vert. | 29/05/2018 | Wall [031], west face | PK |
| 229 | S/Vert. | 29/05/2018 | Wall [031], west face | PK |
| 230 | N | 29/05/2018 | Wall [031], south end, detail | PK |
| 231 | N | 29/05/2018 | Wall [031], west face with lowest course exposed | PK |
| 232 | N | 29/05/2018 | Wall [031], west face with lowest course exposed | PK |
| 233 | E | 29/05/2018 | Wall [031], south end | PK |
| 234 | W/Vert. | 29/05/2018 | Wall [031], with truncated? cut/socket stone | PK |
| 235 | W/Vert. | 29/05/2018 | Wall [031], with truncated? cut/socket stone, detail | PK |
| 236 | W/Vert. | 29/05/2018 | Wall [031], with truncated? cut/socket stone, detail | PK |
| 237 | NE | 29/05/2018 | Wall [031], with truncated? cut/socket stone, detail | PK |
| 238 | NE | 29/05/2018 | Wall [031], west face, with truncated? cut/socket stone, detail | PK |
| 239 | S | 29/05/2018 | Wall [031], south end, north facing section | PK |
| 240 | S | 29/05/2018 | Wall [031], south end, north facing section | PK |
| 241 | S | 29/05/2018 | Wall [031], south end, north facing section | PK |
| 242 | N | 29/05/2018 | Wall [038], upper rubble cleared, general view | PK |
| 243 | N | 29/05/2018 | Wall [038], upper rubble cleared, general view | PK |
| 244 | N | 29/05/2018 | Wall [038], upper rubble cleared, general view | PK |

| <i>Image Number</i> | <i>Direction Facing</i> | <i>Date</i> | <i>Description</i> | <i>Initials</i> |
|---------------------|-------------------------|-------------|--|-----------------|
| 245 | S | 29/05/2018 | Wall [038], upper rubble cleared, general view | PK |
| 246 | E | 29/05/2018 | Wall [038], upper rubble cleared, general view | PK |
| 247 | E | 29/05/2018 | Wall [038], upper rubble cleared, general view | PK |
| 248 | W | 29/05/2018 | Wall [038], upper rubble cleared, general view | PK |
| 249 | S | 29/05/2018 | Wall [038], detail | PK |
| 250 | NW | 30/05/2018 | NW area, with clay (039), general view | PK |
| 251 | N | 30/05/2018 | NW area, with clay (039), general view | PK |
| 252 | E | 30/05/2018 | NW area, with wall [038] to the right, general view | PK |
| 253 | NE | 30/05/2018 | NW area, with wall [038] to the right, general view | PK |
| 254 | NE | 30/05/2018 | NW area, with wall [038] to the right, general view | PK |
| 255 | N | 30/05/2018 | Black clay (039), general view | PK |
| 256 | - | 30/05/2018 | Construction levels diagram | PK |
| 257 | NE | 30/05/2018 | Wall [038] and NW corner, general view | PK |
| 258 | SW | 30/05/2018 | Wall [038] and NW corner, general view | PK |
| 259 | S | 30/05/2018 | Wall [038] and NW corner, general view | PK |
| 260 | N | 30/05/2018 | Wall [038], west end, with bedrock | PK |
| 261 | N | 30/05/2018 | Wall [038], west end, with bedrock | PK |
| 262 | N | 30/05/2018 | Wall [038], east end | PK |
| 263 | N | 30/05/2018 | Wall [038], east end, with drain? | PK |
| 264 | N/Vert. | 30/05/2018 | Wall [038], east end, with drain?, detail | PK |
| 265 | W | 30/05/2018 | NW corner, general view | PK |
| 266 | NW | 30/05/2018 | NW corner, with bedrock, general view | PK |
| 267 | WNW | 14/06/2018 | West Courtyard, as exposed, working shot | AR |
| 268 | W | 14/06/2018 | West Courtyard, as exposed, working shot | AR |
| 269 | W | 14/06/2018 | West Courtyard, as exposed, working shot | AR |
| 270 | NW | 14/06/2018 | West Courtyard, as exposed, working shot, from above | AR |
| 271 | E | 14/06/2018 | West Courtyard, clearing of concrete | AR |
| 272 | E | 14/06/2018 | West Courtyard, clearing of concrete | AR |
| 273 | S | 14/06/2018 | West Courtyard, clearing of concrete | AR |
| 274 | E | 14/06/2018 | West Courtyard, pre-ex | AR |
| 275 | E | 14/06/2018 | West Courtyard, mid-ex, large blocks in (044) | AR |
| 276 | - | 14/06/2018 | West Courtyard, mid-ex, brick in (044) | AR |
| 277 | NE | 14/06/2018 | West Courtyard, mid-ex | AR |
| 278 | E | 14/06/2018 | West Courtyard, post-ex | AR |
| 279 | - | 14/06/2018 | West Courtyard, large blocks in (044) | AR |
| 280 | E | 14/06/2018 | West Courtyard, mid-ex | AR |
| 281 | E | 14/06/2018 | West Courtyard, mid-ex | AR |
| 282 | SE | 14/06/2018 | West Courtyard, mid-ex | AR |
| 283 | SE | 14/06/2018 | West Courtyard, mid-ex | AR |
| 284 | N | 14/06/2018 | West Courtyard, mid-ex | AR |
| 285 | N | 14/06/2018 | West Courtyard, mid-ex | AR |
| 286 | N | 14/06/2018 | West Courtyard, mid-ex | AR |
| 287 | N | 14/06/2018 | West Courtyard, post-ex | AR |
| 288 | E | 14/06/2018 | West Courtyard, post-ex | AR |
| 289 | S | 14/06/2018 | West Courtyard, post-ex | AR |
| 290 | N | 14/06/2018 | West Courtyard, post-ex | AR |
| 291 | S | 14/06/2018 | West Courtyard, post-ex | AR |
| 292 | S | 14/06/2018 | West Courtyard, south end, pre-ex | AR |
| 293 | SE | 14/06/2018 | West Courtyard, south end, pre-ex | AR |
| 294 | SE | 14/06/2018 | West Courtyard, south end, pre-ex | AR |
| 295 | SE | 15/06/2018 | West Courtyard, south end, as exposed | AR |

| Image Number | Direction Facing | Date | Description | Initials |
|---------------------|-------------------------|-------------|--|-----------------|
| 296 | SE | 15/06/2018 | West Courtyard, south end, as exposed | AR |
| 297 | E | 15/06/2018 | West Courtyard, west facing section of area | AR |
| 298 | E | 15/06/2018 | West Courtyard, west facing section of area | AR |
| 299 | N | 15/06/2018 | West Courtyard, working shot, changing buckets | AR |
| 300 | N | 15/06/2018 | West Courtyard, drain trench, pre-ex | AR |
| 301 | W | 15/06/2018 | West Courtyard, Pb pipe in NW corner | AR |
| 302 | W | 15/06/2018 | West Courtyard, Pb pipe in NW corner | AR |
| 303 | W/Vert. | 15/06/2018 | West Courtyard, drain [049], as first exposed | AR |
| 304 | W/Vert. | 15/06/2018 | West Courtyard, drain [049], as first exposed | AR |
| 305 | NW | 15/06/2018 | West Courtyard, drain [049], as first exposed | AR |
| 306 | N | 15/06/2018 | West Courtyard, drain [049], as first exposed, detail | AR |
| 307 | N | 15/06/2018 | Interior, Drain Trench, as exposed | AR |
| 308 | W | 15/06/2018 | Interior, Drain Trench, east facing section | AR |
| 309 | W | 15/06/2018 | Interior, Drain Trench, east facing section | AR |
| 310 | W | 15/06/2018 | Interior, Drain Trench, east facing section | AR |
| 311 | W | 15/06/2018 | Interior, Drain Trench, east facing section | AR |
| 312 | - | 15/06/2018 | Interior, U/S? brick | AR |
| 313 | NW | 15/06/2018 | West Courtyard, manhole [046], pre-ex | AR |
| 314 | N | 15/06/2018 | West Courtyard, manhole [046], pre-ex | AR |
| 315 | - | 15/06/2018 | West Courtyard, concrete blocks in (044) | AR |
| 316 | E | 15/06/2018 | West Courtyard, manhole [046], as first exposed | AR |
| 317 | E | 15/06/2018 | West Courtyard, manhole [046], post-ex | AR |
| 318 | E | 15/06/2018 | West Courtyard, manhole [046], post-ex | AR |
| 319 | W | 15/06/2018 | West Courtyard, NW corner, mid-ex | AR |
| 320 | SW | 15/06/2018 | West Courtyard, NW corner, mid-ex | AR |
| 321 | S | 15/06/2018 | West Courtyard, wall [049], location | AR |
| 322 | S/Vert. | 15/06/2018 | West Courtyard, wall [049] | AR |
| 323 | S | 15/06/2018 | West Courtyard, wall [049] | AR |
| 324 | W/Vert. | 15/06/2018 | West Courtyard, wall [049] | AR |
| 325 | W/Vert. | 15/06/2018 | West Courtyard, wall [049] | AR |
| 326 | S | 15/06/2018 | West Courtyard, wall [049], north facing section | AR |
| 327 | S | 15/06/2018 | West Courtyard, wall [049], north facing section | AR |
| 328 | S | 15/06/2018 | West Courtyard, wall [049], north facing section | AR |
| 329 | E | 15/06/2018 | West Courtyard, cut [050], west facing section | AR |
| 330 | E | 15/06/2018 | West Courtyard, cut [050], west facing section | AR |
| 331 | E | 15/06/2018 | West Courtyard, cut [050], west facing section | AR |
| 332 | E | 15/06/2018 | West Courtyard, cut [050], west facing section, detail of wood | AR |
| 333 | E | 15/06/2018 | West Courtyard, wall [049] and cut [050], west facing section | AR |
| 334 | E | 15/06/2018 | West Courtyard, cut [050], west facing section, detail of wood | AR |
| 335 | S | 15/06/2018 | West Courtyard, Drain Trench, as left | AR |
| 336 | N | 15/06/2018 | West Courtyard, Drain Trench, as left | AR |
| 337 | S | 18/06/2018 | West Courtyard, Drain Trench, as found | AR |
| 338 | SE | 18/06/2018 | West Courtyard, clearing of spoil | AR |
| 339 | N | 18/06/2018 | West Courtyard, drain [045] and [048], general view | AR |
| 340 | N | 18/06/2018 | West Courtyard, drain [045] and [048], general view | AR |
| 341 | W | 18/06/2018 | West Courtyard, drain [045], mid-ex | AR |
| 342 | N | 18/06/2018 | West Courtyard, drain [045], post-ex | AR |
| 343 | W | 18/06/2018 | West Courtyard, drain [045], post-ex, exposing bedrock and natural (054) | AR |
| 344 | W | 18/06/2018 | West Courtyard, drain [045], post-ex, exposing bedrock and natural (054) | AR |

| Image Number | Direction Facing | Date | Description | Initials |
|---------------------|-------------------------|-------------|--|-----------------|
| 345 | S | 18/06/2018 | West Courtyard, drain [045], post-ex, exposing bedrock and natural (054) | AR |
| 346 | N | 18/06/2018 | West Courtyard, drain [045], post-ex, exposing bedrock and natural (054), detail | AR |
| 347 | N | 18/06/2018 | West Courtyard, drain [045], post-ex, exposing bedrock and natural (054), detail | AR |
| 348 | E/Vert. | 18/06/2018 | West Courtyard, drain [045], flat bedrock area | AR |
| 349 | E | 18/06/2018 | West Courtyard, drain [045], west facing section | AR |
| 350 | N | 18/06/2018 | West Courtyard, drain [045] and bedrock, south facing section | AR |
| 351 | NE | 18/06/2018 | West Courtyard, drain [045] and bedrock | AR |
| 352 | NW | 18/06/2018 | West Courtyard, drain [045] and bedrock, SE facing section | AR |
| 353 | E/Vert. | 18/06/2018 | West Courtyard, cut [053], detail | AR |
| 354 | S | 18/06/2018 | West Courtyard, drain [055] | AR |
| 355 | S | 18/06/2018 | West Courtyard, stone from wall [049] removed | AR |
| 356 | S | 18/06/2018 | West Courtyard, stone from wall [049] removed | AR |
| 357 | S | 18/06/2018 | West Courtyard, drain [045], as connecting to manhole [046] | AR |
| 358 | S | 18/06/2018 | West Courtyard, wall [049] on bedrock, general view | AR |
| 359 | W | 18/06/2018 | West Courtyard, wall [049] on bedrock, general view | AR |
| 360 | N | 18/06/2018 | West Courtyard, wall [049] on bedrock, general view | AR |
| 361 | E | 18/06/2018 | West Courtyard, wall [049] on bedrock, general view | AR |
| 362 | S | 18/06/2018 | West Courtyard, wall [049] on bedrock, north facing section | AR |
| 363 | S | 18/06/2018 | West Courtyard, wall [049] on bedrock, north facing section | AR |
| 364 | N | 18/06/2018 | West Courtyard, wall [049] | AR |
| 365 | S | 18/06/2018 | West Courtyard, wall [049] on bedrock, north facing section to bedrock | AR |
| 366 | S | 18/06/2018 | West Courtyard, wall [049] on bedrock, north facing section to bedrock | AR |
| 367 | S | 18/06/2018 | West Courtyard, Drain Trench, as left on bedrock or natural | AR |
| 368 | N | 18/06/2018 | West Courtyard, Drain Trench, as left on bedrock or natural | AR |
| 369 | NW | 26/09/2018 | Working shot | AR |
| 370 | NE | 26/09/2018 | Working shot | AR |
| 371 | N | 26/09/2018 | South Courtyard, west end, post-ex | AR |
| 372 | N | 26/09/2018 | South Courtyard, west end, south facing section | AR |
| 373 | E | 26/09/2018 | South Courtyard, west end, west facing section | AR |
| 374 | NE | 26/09/2018 | South Courtyard, west end, north-east corner | AR |
| 375 | W | 26/09/2018 | South Courtyard, west end, east facing section | AR |
| 376 | W | 26/09/2018 | South Courtyard, west end, east facing section | AR |
| 377 | NW | 10/09/2018 | View into Western courtyard from inside, showing wall footings | TA |
| 378 | W | 10/09/2018 | View into Western courtyard from inside, showing wall footings | TA |
| 379 | NW | 10/09/2018 | View of internal works | TA |
| 380 | W | 10/09/2018 | View of wall footings | TA |
| 381 | E | 22/10/2018 | View of excavations southern courtyard, school building to N, retaining wall to S | PK |
| 382 | E | 22/10/2018 | View of excavations southern courtyard, school building to N, retaining wall to S | PK |
| 383 | N | 22/10/2018 | Exposed foundations of school building from southern courtyard excavations | PK |
| 384 | N | 22/10/2018 | Exposed foundations of school building from southern courtyard excavations | PK |
| 385 | SE | 22/10/2018 | Excavation in front of retaining wall showing earlier brick and masonry wall foundations | PK |

| Image Number | Direction Facing | Date | Description | Initials |
|---------------------|-------------------------|-------------|---|-----------------|
| 386 | S | 22/10/2018 | N-S and E-W wall stubs exposed during excavations of southern courtyard | PK |
| 387 | E | 22/10/2018 | General view of excavations of southern courtyard | PK |
| 388 | E | 22/10/2018 | General view of excavations of southern courtyard, rubble blocking | PK |
| 389 | E | 22/10/2018 | General view of excavations of southern courtyard, rubble blocking | PK |
| 390 | - | 18/06/2019 | Finds, coin (SF001), obverse | AR |
| 391 | - | 18/06/2019 | Finds, coin (SF001), reverse | AR |
| 392 | - | 18/06/2019 | Finds, clay pipe (SF002) | AR |

Appendix E Finds Register

| <i>Finds No.</i> | <i>Context No.</i> | <i>FeatureNo.</i> | <i>Material</i> | <i>Date</i> | <i>Initials</i> | <i>Quantity</i> | <i>Description</i> | <i>Date</i> |
|------------------|--------------------|-------------------|-----------------|-------------|-----------------|-----------------|---|-------------------|
| 001 | (051) | [050] | Coin | 18/06/2018 | AR | 1 | Half penny of George III, milled in Ireland | 1769 |
| 002 | (043) | - | Clay Pipe | 18/06/2018 | AR | 1 | Bowl with heel, 'Mackenzie, St John's Hill, Edinb[urgh] | 1864 - 1883 |

Appendix F DES entry

| | |
|---|--|
| LOCAL AUTHORITY: | City of Edinburgh |
| PROJECT TITLE/SITE NAME: | Scotch Whisky Experience |
| PROJECT CODE: | 2324 |
| PARISH: | Edinburgh |
| NAME OF CONTRIBUTOR: | Antoine Ruchonnet |
| NAME OF ORGANISATION: | Addyman Archaeology |
| TYPE(S) OF PROJECT: | Watching Brief |
| NMRS NO(S): | 111751; 235963 |
| SITE/MONUMENT TYPE(S): | School; janitor's house |
| SIGNIFICANT FINDS: | none |
| NGR (2 letters, 8 or 10 figures) | NT 25408 73503 |
| START DATE (this season) | 11 April 2018 |
| END DATE (this season) | 22 October 2018 |
| PREVIOUS WORK (incl. DES ref.) | - |
| MAIN (NARRATIVE) DESCRIPTION: (May include information from other fields) | <p>Addyman Archaeology undertook a Watching Brief at Scotch Whisky Experience, Castlehill, adjacent to Edinburgh Castle esplanade during ground breaking works as part of a scheme to expand and enhance the building. The building is a former school and adjacent janitor's house and is a Category B Listed Building. The monitoring included a series of trial pits as well as internal works and works to the western and southern courtyards.</p> <p>The trial pits did not reveal any evidence for earlier deposits. The internal ground reduction revealed two walls, which pre-dated the school building. Examination of historic maps suggests that these may be the north-east corner of a building depicted on Edgar's map of 1765, with the eastern boundary surviving as the close boundary by the time of the first edition Ordnance Survey map and the construction of Johnston Terrace.</p> <p>Further monitoring undertaken in the western and southern courtyards revealed an east-west boundary in the western courtyard, as depicted on the first edition Ordnance Survey map; fragments of earlier masonry walls were also recorded in the southern courtyard.</p> |
| PROPOSED FUTURE WORK: | none |
| CAPTION(S) FOR ILLUSTRS: | - |
| SPONSOR OR FUNDING BODY: | Scotch Whisky Experience |
| ADDRESS OF MAIN CONTRIBUTOR: | The Old Printworks, 77a Brunswick Street, Edinburgh EH7 5HS |
| EMAIL ADDRESS: | admin@addyman-archaeology.co.uk |
| ARCHIVE LOCATION (intended/deposited) | NRHE (intended) |