

-3 DEC 2003

**Land North of Woodbine Cottage
Yapham
East Yorkshire
SE 7893 5210**

**Targeted Trial Excavation
and Feature Plan**

**MAP
2003**

**Land North of Woodbine Cottage
Yapham
East Yorkshire
SE 7893 5210**

**Planning Ref. DC/03/05606/PLF/WESTWW
Sample Excavation and Feature Planning Report**

Contents

Figure List

Plates List

Non-Technical Summary

1. Introduction
2. Historical and Archaeological Backgrounds
3. Methodology
4. Results
5. Conclusions
6. References

Appendices

1. Context Listing
2. Finds Catalogue
3. Small Finds Listing

Figure List

1. Site Location. Scale 1:50000
2. Area of Development
3. Overall Feature Plan
4. Plan of excavated features
5. Sections of excavated features
6. Plan of ditches
7. Plan of Pits
8. Plan of Postholes
9. Plan of Gullies
10. Plan of Miscellaneous Features
11. Small finds
12. Development plan and archaeological features
13. Phased feature plan
14. Levels over the site

Plate List

1. Pit 9. 1m Scale. Facing south
2. Pits 3, 5 & 7. 2m + 1m Scale. Facing south
3. Area A. 2x2m Scale. Facing north-east
4. Area B. 2x2m scale. Facing south-east

**Land North of Woodbine Cottage
Yapham
East Yorkshire
SE 7893 5210**

**Planning Ref. DC/03/05606/PLF/WESTWW
Sample Excavation and Feature Planning Report**

1. Introduction

This report has been commissioned by Geoffery-Royston Ltd, in advance of the proposed erection of five dwellings, two detached double garages and conversion of Woodbine Cottage, Yapham, East Yorkshire (SE 7893 5210 : Fig. 1).

This document sets out the details and results of the Archaeological Sample excavation and a general feature plan as specified in the agreed Written Scheme of Works.

The Archaeological work was undertaken by MAP Archaeological Consultancy Ltd between the 3rd of October to 26th of November, 2003.

All Maps within this report have been produced from The Ordnance Survey with the permission of the Controller of Her Majesty's Stationery Office, Crown Copyright. License No. AL 50453A.

This report has been funded by Geoffrey-Royston Ltd.

2. Site Description (Fig. 2)

The site, measuring 0.39 hectares, lies at the northern end of the settlement, in a triangular area formed by a fork in the road – one fork goes to Mill Farm where it terminates, the other (Melsonby) runs past Woodbine Cottage, before turning south-eastwards to run past High Garth.

3. Geology

The proposed development area is located on soils of the Worcester Association. This association comprises of slowly permeable non-calcareous and calcareous reddish clayey soils over mudstone, shallow on steeper slopes. Associated with similar non-calcareous fine loamy over clayey soils.

4. Historical and Archaeological Background

The site of the development lies at the north end of the medieval hamlet of Yapham. This is a pre-Conquest settlement, which has its origins in the Saxon period, the name deriving from the Old English meaning “at the steep places”; it formed part of Warter hundred. At the time of Domesday Book, the King held 11 carucates in Yapham, and Ulfr and Wulfstan held 10 carucates and 6 bovates here, sufficient land for 2 ploughs, it was worth 20s. The settlement is attested throughout the Middle Ages.

Well-preserved earthworks, especially in the southern part of the settlement, demonstrate that the latter was once considerably larger than it is today. The remains of earlier settlement are present in the surrounding area. The crop-marks of a number of rectangular enclosures, one of which contains a hut circle, which could date from the prehistoric or Romano-British periods, are visible from aerial photographs to the north-west of the village.

5. Methodology

The first stage of work was to strip all of the topsoil from the area of the proposed development using a 360° excavator fitted with a toothless ditching bucket under archaeological supervision. The exposed surface was then thoroughly cleaned, in order to assist the identification of any features. A detailed plan was then made of all features, which were showing, to an appropriate scale (e.g. 1:10, or 1:20).

A targeted amount of excavation work was also carried out around the area of Woodbine Cottage. This was done to enable some groundworks to take place which were located in this area including a septic tank.

6. Results: Sample Excavation (Figs. 3 & 4)

A total of seven features were excavated in the area around Woodbine Cottage to enable groundworks to take place. (these can be located using Figure 3 and seen in greater detail with Figures 4 and 5, plan and sections respectively).

Postholes

There were a total of three postholes located in the targeted excavation area.

Posthole 3, had a diameter of c. 0.40m and a depth of 0.12m with a U-shaped profile. The fill of this feature (2) was a dark grey brown (10YR 4/2), sandy loam with occasional gravel and limestone inclusions containing no finds.

Posthole 5, had a diameter of c. 0.40m and a depth of 0.12m with a U-shaped profile. The fill of this feature (4) was a very dark grey (7.5YR 3/1), sandy loam with occasional gravel and limestone inclusions containing one limb bone fragment of possibly a sheep.

Posthole 14, had a diameter of c. 0.30m and a depth of 0.30m with a steeply sided U – shaped profile. The fill of this feature (13) was a dark brown (10YR 3/3), silty sand with occasional gravel and limestone inclusions containing no finds. This feature was cut by Ditch 10 (this ditch was also located during the general feature plan and given the number 224).

Ditch

Ditch 10 (same as 224) ran north to south and went directly underneath the middle of Woodbine Cottage. It had a width of c. 1.9m and a depth of 0.40m with a steeply sided U-shaped profile. The primary fill (12) was a reddish brown (5YR 5/4), silty sand with occasional gravel and limestone inclusions containing no finds. Above fill (12) was fill (11), this was a dark brown (10YR 3/3), silty sand with occasional gravel and limestone inclusions containing 13 sherds of 12th/13th century pottery. (For more information on this ditch see the results for the targeted feature plan, feature number 224).

Pits

Pit 9, had a diameter of c. 0.65m and a depth of 0.50m with a steeply sided U-shaped profile. The fill of this feature (8) was a very dark brown (10YR 2/2), sandy clay with occasional gravel and limestone inclusions. This contained two sherds of Roman Greyware, 3 sherds of 14th century pottery and one sherd of 18/19th century Blackware which was possibly intrusive.

Pit 7 had a diameter of c.0.60m and a depth of 0.22m with a U-shaped profile. The fill of this feature (6) was a very dark grey (10YR 3/1), sandy loam with occasional gravel and limestone inclusions containing no finds.

Pit 17 had a length of c. 3.5m and a width of c. 1.7m with a broad U-shaped profile. The primary fill of this feature (16) was a dark grey (10YR 4/1), clay silt with occasional gravel and limestone inclusions containing forty-eight sherds of 14th century pottery. Above fill (16) was fill (15), this was a very dark greyish brown (10YR 3/2), loamy sandy silt with occasional gravel and limestone inclusions containing four sherds of Roman Greyware and six sherds of 12th/13th century pottery.

Results of Targeted Feature Plan (Figs. 3 & 13) :

All areas stripped by the machine were cleaned by a team of archaeologists and planned to a scale of 1:20. Although no excavation of features took place they have been put into five categories. These five categories were:

1. Ditches
2. Gullies
3. Pits
4. Postholes
5. Unusual features (eg. Ponds)

As none of the features were excavated it was not possible to give certain stratigraphic relationships. However, pottery which was found on the top of features during cleaning was saved and some relationships between features were visible without excavation.

The site has been split into two zones to allow features to be viewed on plan quicker (Fig. 3). These will be Zone A (north of the concrete slab) and Zone B (south of the concrete slab).

Zone A

There were a total of five ditches, thirty-eight postholes, thirty-four pits, fifteen gullies and five unusual features.

Ditches (Fig. 6)

Ditch 128, ran along the entirety of the western baulk edge running north to south in Zone A. This ditch was filled by a very dark brown, silty sand with occasional chalk and flint fragments. There were three sherds of Roman pottery dating from the 3rd/4th century and one sherd of medieval pottery from the 12/13th century recovered from this feature.

Ditch 115, was also located on the western baulk edge of Zone A, centrally positioned running west to east and visibly cut ditch 128. This ditch was filled by a very dark brown, sandy silt with occasional chalk and flint fragments containing no finds.

Ditch 114, was located running west to east along the northern sector of Zone A and was visibly cut by Ditch 128. This ditch was filled by a dark brown, sandy silt with occasional chalk and flint fragments. There were sixteen sherds of 3rd/4th century pottery found on the surface of this ditch.

Ditch 81 ran alongside Ditch 114 on its northern side. It was unclear if this was the same ditch with two different fills or two separate ditches. The fill was a very dark brown, silty sand with occasional chalk and flint fragments. There were twenty-three sherds of pottery dating from the 3/4th Century and one sherd of pottery dating from the 12th/13th century recovered from this feature.

Ditch 95 was located in the northern area of Zone A, centrally positioned running into the northern bulk and visibly cut by ditch 81. The fill was a very

dark brown, silty sand with occasional chalk and flint fragments. Small find 9 was found on this feature during cleaning, this was dated to the 17th century. It seems likely, however, that this find was in the topsoil above the feature.

Pits (Fig. 7)

There were a total of thirty-four pits located in Zone A. These were feature numbers 55, 56, 60, 66, 78, 79, 88-94, 98, 99, 106, 107, 112, 113, 117, 120-123, 127, 131, 140, 142-148 and 164. All these fills were given munsell colours between dark yellowish brown to very dark brown and had silty sandy fills with occasional chalk and flint fragments. Pits 55 and 131 had small fragments of Roman pottery and Pit 92 had one sherd of 12th/13th century pottery.

Postholes (Fig. 8)

There were a total of 38 postholes located in Zone A. These were feature numbers 54, 57, 59, 61, 62, 64, 65, 68, 69, 73, 74, 76, 80, 85-87, 97, 103-105, 109, 111, 116, 118, 124, 125, 132-135, 137-139, 141 and 149-152. All these fills were given munsell colours between dark brown and very dark brown and had silty sandy fills with occasional chalk and flint fragments. Posthole 132 had one sherd of 3rd/4th century pottery and Posthole 133, again, had one sherd of pottery datable only to the Roman period.

As no excavation work was carried out it is difficult, without using guesswork, to look for structures. However, Postholes 64, 69, 86 and 87 are clearly incorporated with Gully 63 to create a small round house.

Gullies (Fig. 9)

There were a total of fifteen gullies located in Zone A. These were feature numbers 63, 67, 70, 75, 77, 82, 83 (same as 100), 84, 96, 101, 102, 108 (same as 136), 110, 126 and 130. All these were given munsell colours between dark brown and very dark brown and had silty sandy fills with occasional chalk and flint fragments. None of these features contained pottery to date them.

Unusual Features (Fig. 10)

There were five of these features located during planning. These were either features that could not be defined without excavation, a pond or a possible furrow.

Feature 53 was located in the south-eastern corner of Zone A and contained pottery from the 17th to 18th century. It seems likely that this was to hold water for livestock and was backfilled during the 17th to 18th century.

There were also five features described as general deposits, one of which contained some reddish clay (71). These features were 58, 71, 72, 119 and 129. All were given munsell colours between dark yellowish brown to very dark brown and had silty sandy fills with occasional chalk and flint fragments. Feature 58 and 72 had fragments of pottery datable only to the Roman period and 119 had pottery dating to the 4th century.

Zone B

There were in total ten ditches, two gullies, thirty-two postholes, thirty-six pits and two unusual features.

Ditches (Fig.6)

Ditch 22 (same as 39 and 184) was roughly in the centre of Zone B running in a southwest to northeast direction. This ditch was filled by a greyish brown to dark grey, silty sandy fill with occasional chalk and flint fragments. One sherd of pottery datable to the Roman period and three sherds of pottery from the 13th/14th century were recovered from this feature.

Ditch 51 (same as 221) was located in the centre of Zone B going into ditch 22, it was not possible to see what relationship these two ditches had to each other. This ditch was filled by a dark brown, silty sandy fill with occasional chalk and flint fragments. No finds were recovered associated with this ditch.

Ditch 24 (same as 194 and 210) was ran roughly parallel with ditch 22 to the east. This ditch was filled by a dark greyish brown to dark brown, silty sandy fill with occasional chalk and flint fragments. No finds were recovered associated with this ditch.

Ditch 25 was located in the northeast corner of Zone B running in an east to west direction. This ditch was filled by a dark greyish brown, silty sand fill with occasional chalk and flint fragments. No finds were recovered from this ditch. It was clear, however, that this feature was cut by both Gully 18 and 21.

Ditch 34 was located in the northeast corner of Zone B. This ditch was filled by a dark greyish brown, silty sand with occasional chalk and flint fragments. No finds were recovered associated with this ditch. It was clear, however, that this feature was cut by Gully 21.

Ditch 36 (same as 169 and 170) was located again in the northeast corner of Zone B. This ditch was filled by a dark greyish brown to dark brown, silty sand with occasional chalk and flint fragments. There were two sherds of pottery located dating to the 12/13th century.

Ditch 37 was located in the northeast corner of Zone B, however, very little was seen. This ditch was filled by a dark greyish brown, silty sand with occasional chalk and flint fragments. No finds were associated with this ditch.

Ditch 38 again was located in the northeast corner of Zone B. This ditch was filled by a dark greyish brown, silty sand with occasional chalk and flint fragments. No finds were recovered associated with this ditch.

Ditch 197 was located in the northeast corner of Zone B running in an east to west direction joining both Ditches 24 and 224. It was not possible, however, to see what relationship they had. This ditch was filled by a dark brown, silty sand with occasional chalk and flint fragments. No finds were recovered from with this ditch.

Ditch 224 was joined to Ditch 197 and was located in the eastern side of Zone B and ran in a southwest to northeast direction. This ditch was filled by a dark brown, silty sand with occasional chalk and flint fragments. No finds were recovered associated with this ditch.

Postholes (Fig. 8)

There were a total of thirty-two postholes located in Zone B. These were feature numbers 19, 27, 28, 31, 32, 40, 46, 157, 165-168, 172-174, 177-179, 181, 191, 196, 198, 199, 203, 204, 211, 212, 214, 215, 218 and 219. All these fills were given munsell colours between dark brown and dark greyish brown with silty sandy fills and occasional chalk and flint fragments. Posthole 168 had three sherds of 2nd/3rd century pottery and Posthole 172 had two sherds of pottery datable to the 3/4th century.

There are no specific structures in Zone B which stand out when Figure 8 is viewed. However, there is some clustering of Postholes 203, 204, 211, 212, 214 and 215.

Pits (Fig. 7)

There were a total of thirty-six pits located in Zone B. These were feature numbers 20, 23, 26, 29, 30, 33, 35, 43, 44 (same as 206), 45, 47, 48, 52, 153, 158, 161-163, 171, 175, 176, 182, 183, 185, 189, 190, 192, 202, 207, 216, 220, 223 and 225-227. All these fills were given munsell colours between dark yellowish brown to very dark brown and had silty sandy fills with occasional chalk and flint fragments. Pits 23 and 153 had small fragments of pottery datable to the Roman period, pit 183 had two sherds dating to the 3/4th century, pit 44 had 13 sherds of 12th/13th century pottery and Pit 48 had one sherd of pottery dating to the 13th/14th century.

Gullies (Fig. 9)

There were a total of twenty-one gullies located in Zone B. These were feature numbers 18, 21, 41 (same as 195), 42, 49, 50, 154-156, 159, 160, 180, 186-188, 200, 201, 205, 208, 209 and 217. All these were given munsell colours

between dark brown and very dark brown and had silty sandy fills with occasional chalk and flint fragments. Gully 18 contained pottery dating to the 1st/2nd century, Gully 21 contained pottery dating to the 4th century and Gully 156 contained pottery dating to the 3rd/4th century.

Interpretation for these gullies is difficult without proving by excavation, however, it seems likely that the majority of these are for drainage.

Unusual Features:

These features were 193 and 213. Both the fills were very dark brown, silty sand with occasional chalk and flint fragments. Deposit 193 did not contain any finds but Deposit 213 contained one sherd of 2nd/4th century pottery and one sherd of 12th century pottery.

Small Finds (Fig. 12 & Appendix 3)

When the site had been stripped a metal detector survey was carried out to locate any small finds. This located a total of twenty-four finds, including fourteen coins. These coins all dated between 340AD and 378AD. For a complete list of these small finds see Appendix 3.

Conclusion (Fig. 12)

From an initial view of the overall feature plan it is clear that there is a great deal of archaeological activity. This seems to date from the 3rd/4th century and 12th/14th century, which would fit into the general picture of Yapham and the surrounding areas. It is difficult, however, to further interpret or discuss these features without excavation.

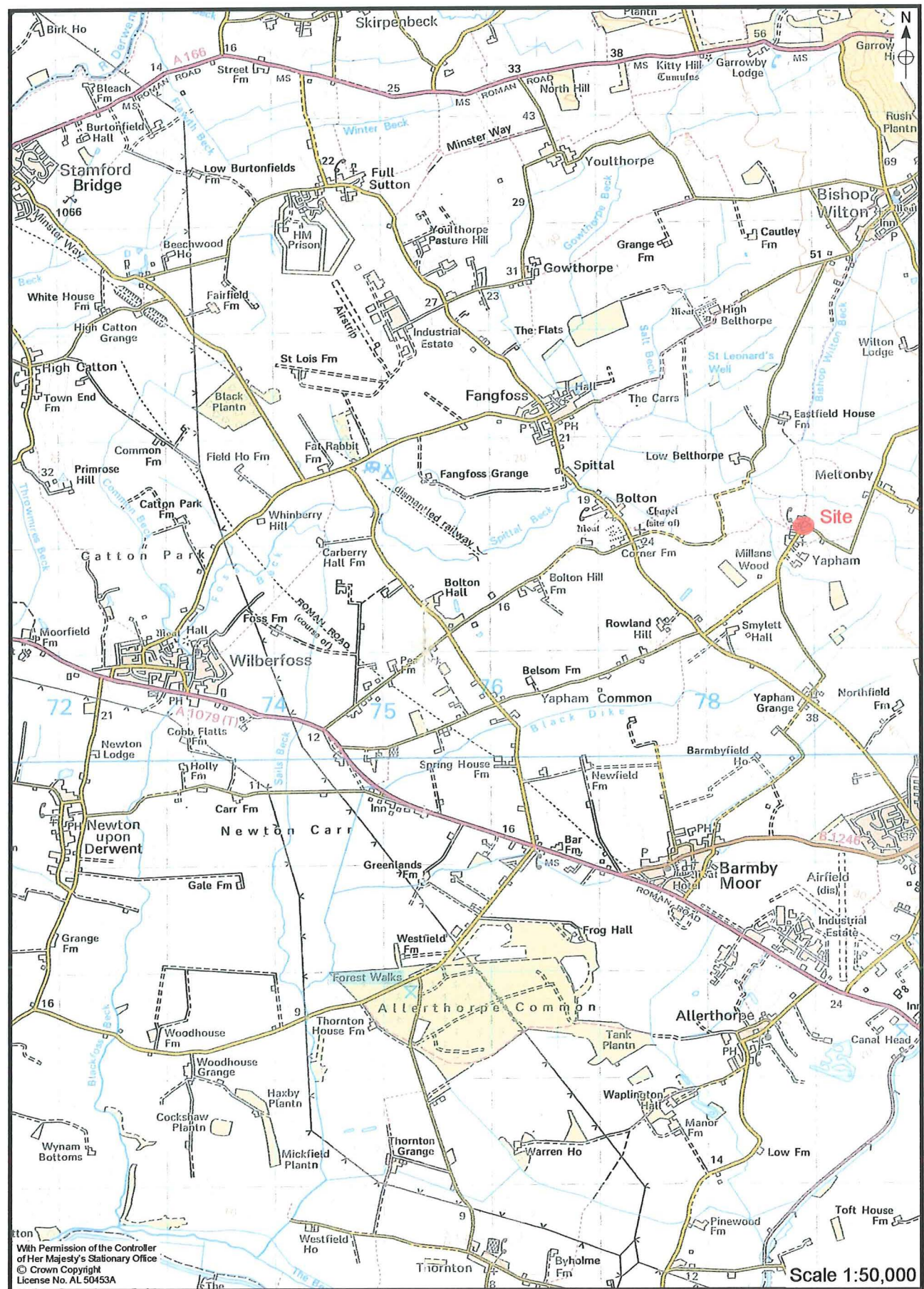


Figure 1. Site Location

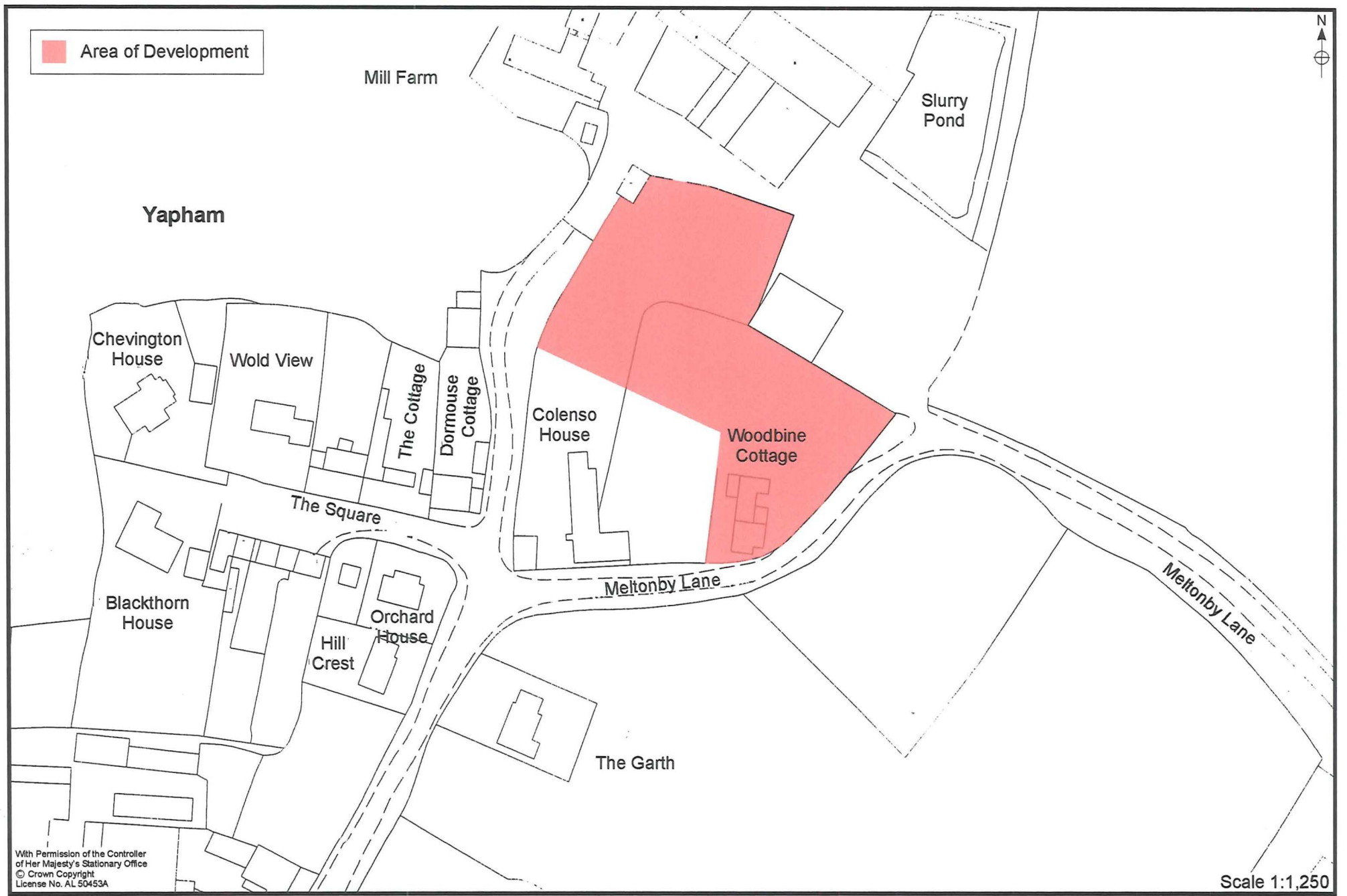


Figure 2. Area of Development



Figure 3. Overall Feature Plan

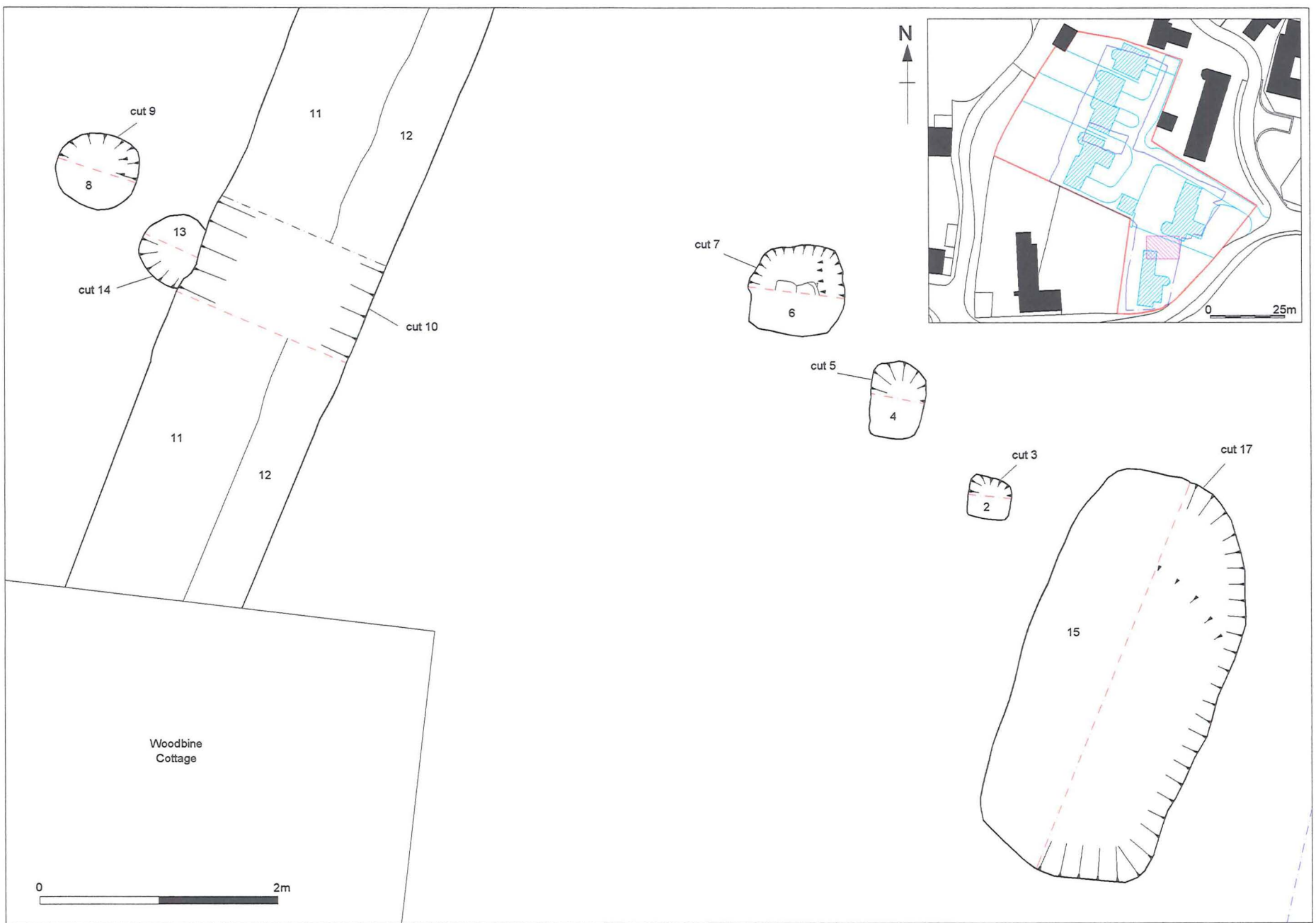


Figure 4. Plan of Excavated Features

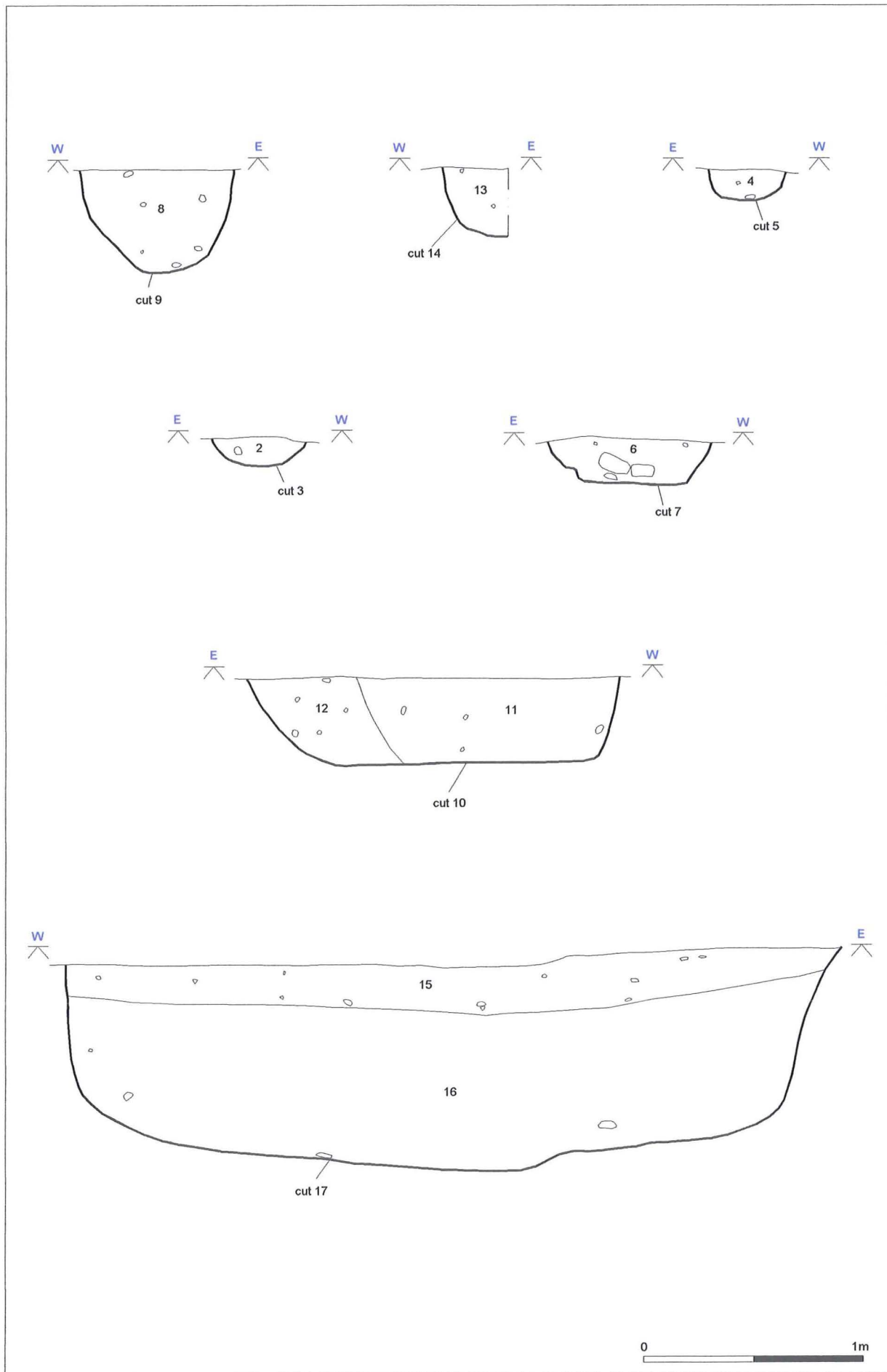


Figure 5. Sections of Excavated Features



Figure 6. Plan of Ditches

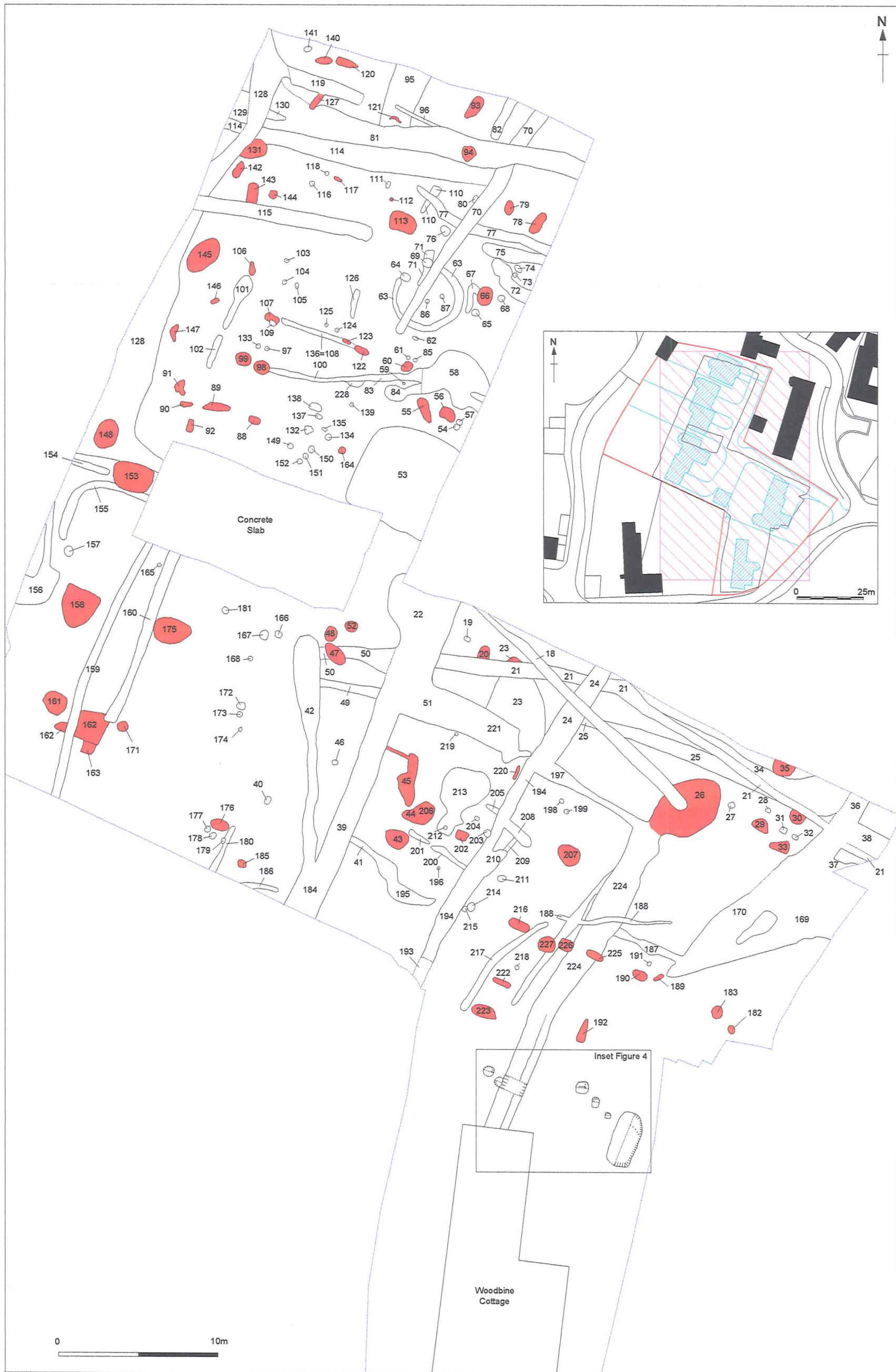


Figure 7. Plan of Pits



Figure 9. Plan of Gullies



Figure 11. Small Finds



Figure 12. Development Plan and Archaeological Features



Figure 13. Phased Feature Plan



Levels

1.	37.68m AOD
2.	37.41m AOD
3.	37.18m AOD
4.	37.15m AOD
5.	37.00m AOD
6.	37.67m AOD
7.	37.16m AOD
8.	37.58m AOD
9.	37.04m AOD
10.	37.36m AOD
11.	37.15m AOD
12.	37.16m AOD
13.	37.39m AOD
14.	36.80m AOD
15.	36.91m AOD
16.	36.87m AOD
17.	36.56m AOD
18.	36.96m AOD
19.	36.84m AOD
20.	36.99m AOD
21.	37.17m AOD
22.	37.07m AOD
23.	37.22m AOD
24.	36.91m AOD
25.	36.85m AOD
26.	36.94m AOD
27.	37.01m AOD
28.	37.16m AOD
29.	36.85m AOD
30.	36.63m AOD
31.	36.96m AOD



Woodbine Cottage

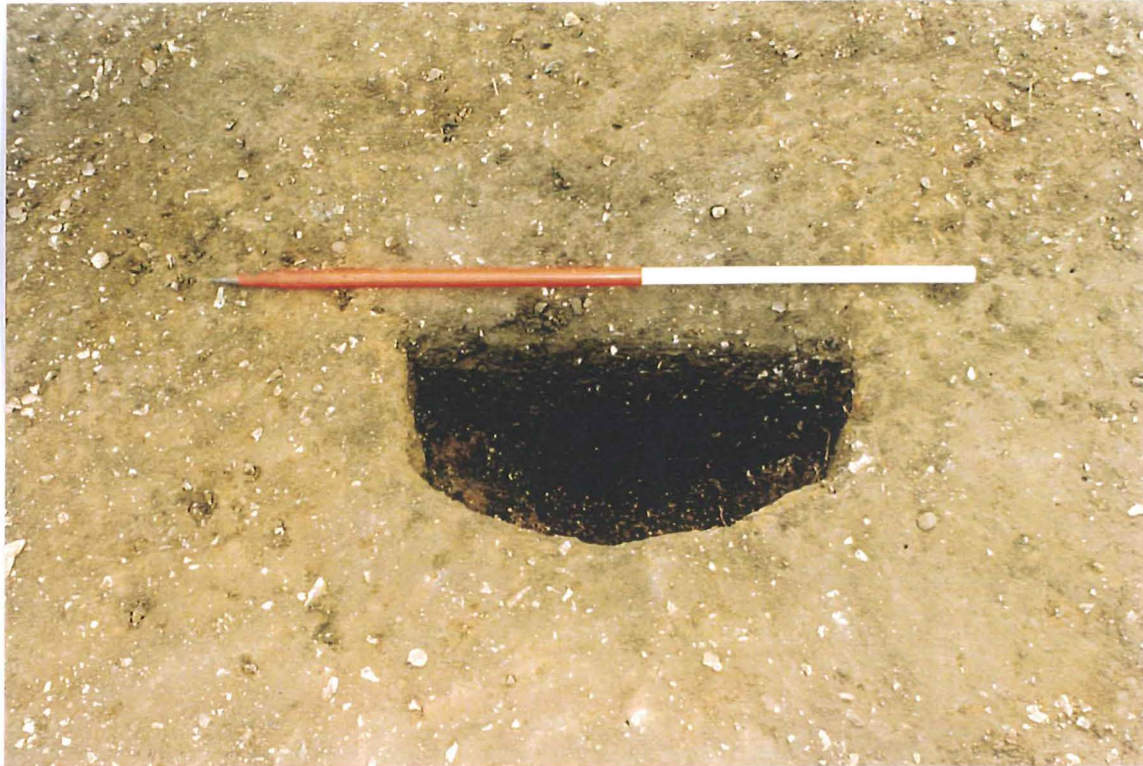


Plate 1. Pit 9. 1m Scale. Facing south.



Plate 2. Pits 3, 5 & 7. 2m + 1m. Facing south.



Plate 3. Area A. 2x2m Scale. Facing North-east.



Plate 4. Area B. 2x2m scale. Facing South-east.

Appendix 1

* Indicates finds were removed from surface of feature. See appendix 2 for more information

(Targeted Excavation Area)

Context	Description	
1	Topsoil	
2	Fill of Posthole	10YR 4/2
3	Cut of Posthole	
4*	Fill of Posthole	10YR 3/1
5	Cut of Posthole	
6	Fill of Pit	10YR 3/1
7	Cut of Pit	
8*	Fill of Pit	10YR 2/2
9	Cut of Pit	
10	Cut of Ditch	
11*	Fill of Ditch	10YR 3/3
12	Fill of Ditch	2.5YR 4/3
13	Fill of Posthole	10YR 2/2
14	Cut of Posthole	
15*	Fill of Pit	10YR 3/2
16*	Fill of Pit	10YR 4/1
17	Cut of Pit	

(General Feature Plan)

Context	Description	
18*	Gully	10YR 4/2
19	Posthole	10YR 3/2
20	Pit	10YR 4/2
21*	Gully	10YR 4/2
22*	Ditch (Same as 39 and 184)	10YR 4/2
23*	Pit	10YR 4/2
24	Ditch (Same as 194 and 210)	10YR 4/2
25	Ditch	10YR 4/2
26	Pit	10YR 4/2
27	Posthole	10YR 3/2
28	Posthole	10YR 3/2
29	Pit	10YR 4/2
30	Pit	10YR 3/2
31	Posthole	10YR 3/2
32	Posthole	10YR 3/2
33	Pit	10YR 3/2
34	Ditch	10YR 4/2
35	Pit	10YR 4/2
36	Ditch (Same as 169 and 170)	10YR 3/2
37	Ditch	10YR 4/2
38	Ditch	10YR 4/2
39*	Ditch (Same as 22 and 184)	10YR 3/1

40	Posthole	10YR 3/1
41	Gully (Same as 195)	10YR 3/2
42	Gully	10YR 3/2
43*	Pit	10YR 3/1
44*	Pit (Same as 206)	10YR 3/2
45	Pit	10YR 4/2
46	Posthole	10YR 3/3
47	Pit	10YR 3/1
48*	Pit	10YR 2/1
49	Gully	10YR 3/2
50	Gully	10YR 3/3
51	Ditch (Same as 221)	10YR 3/3
52	Pit	7.5YR 3/2
53*	Pond	10YR 3/1
54	Posthole	10YR 3/3
55*	Pit	10YR 3/1
56	Pit	10YR 3/4
57	Posthole	10YR 3/2
58*	Deposit	10YR 3/2
59	Posthole	10YR 3/2
60	Pit	10YR 2/2
61	Posthole	10YR 3/2
62	Posthole	7.5YR 3/2
63	Ring Gully	10YR 3/1
64	Posthole	10YR 3/3
65	Posthole	10YR 3/3
66	Pit	10YR 3/2
67	Gully	10YR 3/2
68	Posthole	10YR 3/3
69	Posthole	10YR 3/2
70	Gully	10YR 3/1
71	Clay Deposit	7.4YR 4/4
72*	Deposit	10YR 3/3
73	Posthole	10YR 2/2
74	Posthole	10YR 2/2
75	Gully	10YR 3/2
76	Posthole	10YR 3/3
77	Gully	10YR 3/3
78	Pit	10YR 3/2
79	Pit	10YR 2/1
80	Posthole	10YR 3/1
81*	Ditch	10YR 2/2
82	Gully	10YR 3/2
83	Gully (Same as 100)	7.5YR 3/2
84	Gully	10YR 3/1
85	Posthole	10YR 2/2
86	Posthole	10YR 3/1
87	Posthole	10YR 3/1
88	Pit	10YR 3/3
89	Pit	10YR 2/2

90	Pit	10YR 2/2
91	Pit	10YR 2/2
92*	Pit	10YR 3/3
93	Pit	10YR 3/3
94	Pit	10YR 3/3
95	Ditch	10YR 3/1
96	Gully	10YR 3/1
97	Posthole	10YR 2/2
98	Pit	10YR 3/3
99	Pit	10YR 3/3
100	Gully (Same as 83)	10YR 3/3
101	Gully	10YR 3/3
102	Gully	10YR 3/3
103	Posthole	10YR 3/3
104	Posthole	10YR 3/3
105	Posthole	10YR 3/3
106	Pit	10YR 3/3
107	Pit	10YR 3/3
108	Gully (Same as 136)	10YR 3/3
109	Posthole	10YR 3/3
110	Gully	10YR 3/2
111	Posthole	10YR 3/2
112	Pit	10YR 3/2
113	Pit	10YR 3/3
114*	Ditch	10YR 3/3
115	Ditch	10YR 2/2
116	Posthole	10YR 3/3
117	Pit	10YR 2/2
118	Posthole	10YR 3/3
119*	Deposit	10YR 2/2
120	Pit	10YR 2/2
121	Pit	10YR 2/2
122	Pit	10YR 2/2
123	Pit	10YR 2/2
124	Posthole	10YR 3/3
125	Posthole	10YR 2/2
126	Gully	10YR 3/3
127	Pit	10YR 2/2
128*	Ditch	10YR 2/2
129	Deposit	10YR 3/3
130	Gully	10YR 2/2
131*	Pit	10YR 2/2
132*	Posthole	10YR 2/2
133*	Posthole	10YR 2/2
134	Posthole	10YR 3/3
135	Posthole	10YR 3/3
136	Gully (Same as 108)	10YR 2/2
137	Posthole	10YR 3/3
138	Posthole	10YR 3/3
139	Posthole	10YR 3/3

140	Pit	10YR 2/2
141	Posthole	10YR 2/2
142	Pit	10YR 2/2
143	Pit	10YR 2/2
144	Pit	10YR 2/2
145	Pit	10YR 2/2
146	Pit	10YR 3/3
147	Pit	10YR 3/3
148	Pit	10YR 5/2
149	Posthole	10YR 3/3
150	Posthole	10YR 3/3
151	Posthole	10YR 3/3
152	Posthole	10YR 3/3
153*	Pit	10YR 3/1
154	Gully	10YR 4/1
155	Gully	10YR 4/1
156*	Gully	10YR 3/2
157	Posthole	10YR 3/1
158	Pit	10YR 2/2
159	Gully	10YR 2/2
160	Gully	10YR 2/2
161	Pit	10YR 2/2
162	Pit	10YR 2/2
163	Pit	10YR 2/2
164	Pit	10YR 3/3
165	Posthole	10YR 2/2
166	Posthole	10YR 2/2
167	Posthole	10YR 2/2
168*	Posthole	10YR 2/2
169	Ditch (Same as 36 and 170)	10YR 3/3
170*	Ditch (Same as 36 and 169)	10YR 3/3
171	Pit	10YR 2/2
172*	Posthole	10YR 2/2
173	Posthole	10YR 2/2
174	Posthole	10YR 3/3
175	Pit	10YR 2/2
176	Pit	10YR 2/2
177	Posthole	10YR 2/2
178	Posthole	10YR 2/2
179	Posthole	10YR 2/2
180	Gully	10YR 2/2
181	Posthole	10YR 2/2
182	Pit	10YR 3/3
183*	Pit	10YR 3/3
184*	Ditch (Same as 22 and 39)	10YR 2/2
185	Pit	10YR 3/3
186*	Gully	10YR 2/2
187	Gully	10YR 3/3
188	Gully	10YR 3/3
189	Pit	10YR 3/3

190	Pit	10YR 3/3
191	Posthole	10YR 3/3
192	Pit	10YR 3/3
193	Deposit	10YR 2/2
194*	Ditch (Same as 24 and 210)	10YR 2/2
195	Gully (Same as 41)	10YR 2/2
196	Posthole	10YR 2/2
197	Ditch	10YR 3/3
198	Posthole	10YR 3/3
199	Posthole	10YR 3/3
200	Gully	10YR 2/2
201	Gully	10YR 3/3
202	Pit	10YR 2/2
203	Posthole	10YR 2/2
204	Posthole	10YR 2/2
205	Gully	10YR 2/2
206	Pit (Same as 44)	10YR 2/2
207	Pit	10YR 3/3
208	Gully	10YR 3/3
209	Gully	10YR 3/3
210	Ditch (Same as 24 and 194)	10YR 3/3
211	Posthole	10YR 3/3
212	Posthole	10YR 2/2
213*	Deposit	10YR 2/2
214	Posthole	10YR 3/3
215	Posthole	10YR 3/3
216	Pit	10YR 3/3
217	Gully	10YR 3/3
218	Posthole	10YR 3/3
219	Posthole	10YR 2/2
220	Pit	10YR 2/2
221*	Ditch (Same as 51)	10YR 2/2
222	Pit	10YR 3/3
223	Pit	10YR 3/3
224	Ditch	10YR 3/3
225	Pit	10YR 3/3
226	Pit	10YR 3/3
227	Pit	10YR 3/3
228	Deposit	10YR 3/3

Appendix 2
Pottery
Finds
Catalogue

<i>Context</i>	<i>Type</i>	<i>Description</i>	<i>Weight</i>	<i>Spot date</i>
8	pottery	3 body, 1 rim, 1 base, 1 bung	110g	14/15 th
11	pottery	9 body, 3 rim, 1 base	239g	12/13 th
15	pottery	7 body, 3 rim,	128g	12/13 th
16	pottery	30 body, 12 rim, 6 base	1026g	14 th
18	pottery	2 body, 1 rim, 1 base	113g	1/2 nd
21	pottery	10 body, 2 rim, 1 base	258g	4 th
22	pottery	7 body	70g	Roman
23	pottery	2 body, 1 rim	32g	Roman
39	pottery	4 body	21g	13/14 th
44	pottery	9 body, 4 rim	242g	12/13 th
48	pottery	1 body	30g	13/14 th
53	pottery	4 body, 1 handle	64g	17/18 th
55	pottery	1 body	9g	Roman
58	pottery	1 body, 1 base	30g	Roman
72	pottery	1 body	12g	Roman
81	pottery	14 body, 6 rim, 3 base	523g	3/4 th
92	pottery	1 body	6g	12/13 th
114	pottery	14 body, 3 rim	264g	3/4 th
119	pottery	3 body, 2 rim	100g	4 th
128	pottery	1 body	6g	12/13 th
131	pottery	2 body	29g	Roman
132	pottery	1 rim	24g	3/4 th
133	pottery	42 body	204g	Roman
153	pottery	2 body	27g	Roman
156	pottery	1 rim	27g	3/4 th
168	pottery	2 body, 1 rim	34g	2/3 rd
170	pottery	2 body	14g	12/13 th
172	pottery	2 rim	53g	3/4 th
183	pottery	1 body, 1 rim	94g	3/4 th
213	pottery	1 body, 1 rim	39g	2 nd -4 th
221	pottery	1 body	5g	Roman

**Appendix 3
Small Finds Listing**

Number	Location	Type
1	Spoilheap	Copper Alloy Coin (Metal Detector find)
2	Road Area	2 Lead Objects (Metal Detector find)
3	Road Area	Copper Alloy Coin (Metal Detector find)
4	Road Area	Ferrous ring object (Metal Detector find)
5	Road Area	Lead fragment (Metal Detector find)
6	Road Area	Copper Alloy Coin (Metal Detector find)
7	EDM Located 30/10/2003	Lead fragments (Metal Detector find)
8	Spoilheap	Copper Alloy Thimble (Metal Detector find)
9	Road Area	Copper Alloy Coin
10	EDM Located 30/10/2003	Copper Alloy Coin
11	EDM Located 30/10/2003	Lead fragment
12	EDM Located 30/10/2003	Copper Alloy Coin
13	EDM Located 30/10/2003	Copper Alloy Coin
14	EDM Located 30/10/2003	Copper Alloy Coin
15	EDM Located 30/10/2003	Copper Alloy Coin
16	EDM Located 30/10/2003	Copper Alloy Coin
17	EDM Located 30/10/2003	Ferrous object – equine equipment
18	EDM Located 30/10/2003	Lead Object
19	EDM Located 30/10/2003	Lead fragment
20	EDM Located 30/10/2003	Copper Alloy Coin
21	EDM Located 30/10/2003	Copper Alloy Ring (possibly medieval)
22	EDM Located 30/10/2003	Copper Alloy Object (19 th or 20 th century)
23	EDM Located 30/10/2003	Copper Alloy Coin
24	EDM Located 30/10/2003	Copper Alloy Coin

M40 21947
E40 10031
27 JAN 2004
F40 6347
S40 10031

List of Identifications for Coins found at Woodbine Cottage, Yapham
(application numbers DC/03/05606/PLF/WESTWW;
DC/03/07641/PLF/WESTWW).
REF. SMR/PA/CONS/101079

Small Find Number:	Identification
1	Unidentifiable
3	Unidentifiable
6	Unidentifiable
9	Unidentifiable
10	House of Valentinian 364-375AD
12	House of Constantine 1 st c.347AD
13	House of Constantine 1 st c.340AD
14	Constans or Constantius II c.347AD
15	Magnentius c.347-355AD
16	House of Constantine I c.347+AD
20	Constans c.347AD
23	House of Constantine I c.347+AD
24	House of Valentinian 364-378AD

List of Identifications for Pottery Fabrics found at Woodbine Cottage, Yapham
(application numbers DC/03/05606/PLF/WESTWW;
DC/03/07641/PLF/WESTWW).
REF. SMR/PA/CONS/101079

Key for Pottery Fabrics:

BEV1 = Beverley Type 1	C-G = Calcite Gritted
BEV2 = Beverley Type 2	Ebor = Ebor Ware
PGL = Purple Glazed	HW = Humber Ware
STAFFS = Staffordshire	ST/PB = Staxton / Potter Brompton
GW = Greyware	YGL = York Glazed

Context Number:	Identification
8	2 GW 1 GW (Rim) 1 BEV2 1 HW Bunghole 1 18/19 th Blackware (Intrusive?)
11	7 GW 6 BEV 1 (3 Rims)
15	5 GW (2 Rims) 5 BEV1
16	3 GW 4 BEV1 (1 Rim) 4 BEV2 37 ST/PB (11 Rim, 6 Base)
18	4 GW (1 Rim, 1 Base)
21	4 C-G 9 GW
22	7 GW
23	2 GW
39	1 GW 3 BEV2
44	6 ST/PB (Same Vessel, 4 Rim) 7 YGL

48	1 BEV2
53	2 PGL (1 Handle) 3 STAFFS Slipware
55	1 GW
58	2 GW
72	1 C-G
81	7 C-G 1 ?EBOR TYPE 13 GW (7 Rim, 1 Base) 1 Decorated Samian 1 GW 1 BEV1
92	1 BEV1 (Intrusive?)
114	3 C-G 10 GW (1 Base) 3 GW (1 Rim)
119	1 C-G (Rim Lid-Seated Jar) 4 GW (1 Rim)
128	1 C-G 2 GW (1Rim) 1 Grittyware
131	2 C-G
132	1 GW (Flanged Bowl Rim)
133	42 C-G
153	2 GW
156	1 GW (Flanged Bowl Rim)
168	1 C-G 2 GW (1 Rim)
170	1 GW 1 BEV1
172	1 White Mortaria Rim 1 GW (Rim)

183 2 GW (1 Flanged Bowl Rim)

213 1 GW (Rim)
1 BEV1

221 1 GW