

**Stage 1b archaeological evaluation,
Alienated Land Area H,
Colchester Garrison,
Colchester, Essex
January-February 2007**

**report prepared by
Howard Brooks
and Ben Holloway**

**on behalf of
Taylor Woodrow**

CAT project code: 06/10d
Colchester Museums accession code: 2006.127
NGR: TL 99300 24600 (c)



Colchester Archaeological Trust
12 Lexden Road,
Colchester,
Essex CO3 3NF

tel.: (01206) 541051
(01206) 500124

email: archaeologists@catuk.org

CAT Report 413
April 2007

Contents

1	Summary	1
2	Introduction	1
3	Archaeological background	2
4	Aims and strategy	3
5	Results of the evaluation	4
6	Finds	6
7	Discussion	10
8	Acknowledgements	12
9	References	12
10	Abbreviations and glossary	13
11	Archive deposition	14

Figures after p 14

EHER summary sheet

List of figures

- Fig 1 Colchester Garrison, showing location of Alienated Land.
- Fig 2 Area H: location of T4-T10, showing 2002 trenches (T1-T3), and location of newly discovered burials.
- Fig 3 T4-T10: plans.
- Fig 4 T7 and T8: plans.
- Fig 5 T5, T7-T10: sections.

1 Summary

An archaeological evaluation by seven trial-trenches revealed two Roman cremation burials and twelve Roman inhumation burials. A number of east-west and north-south aligned ditches may define the boundaries of discrete burial plots. The dating of the burials is closer to those excavated in 2004 on Garrison Area J1 North (immediately to the south) than to those excavated at Butt Road in the 1970s and 1980s (150m to the north of Area H). The burials were not excavated fully; it is anticipated that excavation will be completed during a later stage of archaeological work.

2 Introduction (Figs 1-3)

- 2.1 This is the archive report on the second phase (Stage 1b) of archaeological trial-trenching evaluation undertaken by the Colchester Archaeological Trust (CAT) on Taylor Woodrow's Alienated Land redevelopment Area H, Colchester Garrison, Colchester, Essex (Fig 1). The first phase took place in 2002 (section 2.5 below).
- 2.2 The parcel of land, which is centred on NGR TL 99300 24600, has recently passed from the ownership of MoD/RMPA to Taylor Woodrow for redevelopment.
- 2.3 The archaeological requirements for archaeological evaluation of this parcel of land were included in a 2002 strategy document for the overall development (*Colchester Garrison Alienated Land outline archaeological project strategy proposal and quality plan*, RPS 2002). This document was required by and agreed by Colchester Borough Council. Figures 1-2 show the context of Area H and the trial-trenching evaluation which is the subject of this report.
- 2.4 Area H consists of the existing car-park (accessed via Butt Road), an area of unused hard standing to the immediate south-east, and the MoD Sergeants' Mess and Education Centre and their gardens to the south-east. However, since the south-eastern end of Area H will not be redeveloped other than by refurbishment, this report relates only to the area of the current car-park and adjacent unused hard standing where intrusive works in the form of new car-parking may take place (see Fig 2). The archaeological context of the Sergeants' Mess and Education Centre is already reasonably well informed by trial-trenches dug within their respective gardens in 2005 for a Time Team television programme. These trenches identified the western end of a Roman circus structure. CBC require that the circus is avoided by intrusive development.
- 2.5 Trial-trenching has been previously undertaken on behalf of RMPA Services in advance of outline planning permission in 2002 (Stage 1a) within the potentially impacted north-western end of Area H. CAT, managed by RPS, undertook an evaluation by trial-trenching to provide a 0.62% sample of Area H. This comprised three trenches (54 m²), one in grassed land on the north-western side of Area H and two within an area of hard standing on the south-eastern side (CAT Report 206, fig 2). No significant archaeology was encountered within these trenches. The archaeological strategy requires the level of trenching for full planning permission to be raised to 3%. Therefore a further 2.38% (209m²) of trenching was required at this stage. This equates to 116m linear of 1.8m-wide trenches. The information obtained from the combined Stage 1a and Stage 1b evaluations will determine whether further mitigation (excavations, watching briefs or avoidance strategies) will be required ahead of or during the construction phase.
- 2.6 An overall archaeological strategy has been provided for the project by RPS (RPS 2004). The strategy provides an outline framework for the mitigation of the archaeological impacts on the Alienated Land.
- 2.7 A Written Scheme of Investigation (WSI) for Area H has been submitted to and approved by CBC (RPS in association with CAT 2006).
- 2.8 The archaeological work was carried out by CAT in association with RPS on behalf of Taylor Woodrow, between 29th January and 5th February 2007. Post-excavation work was carried out between 5th February and 16th April 2007.
- 2.9 In addition to the archaeological strategy (RPS 2004) and the Area H WSI (RPS with CAT 2006), all fieldwork and reporting was undertaken in accordance with CAT's *Policies and procedures* (CAT 1999), Colchester Borough Council's *Guidelines on*

standards and practices for archaeological fieldwork in the Borough of Colchester (CM 2002) and *Guidelines on the preparation and transfer of archaeological archives to Colchester Museums* (CM 2003), the Institute of Field Archaeologists' *Standard and guidance for archaeological field evaluation* (IFA 1999) and *Standard and guidance for the collection, documentation, conservation and research of archaeological materials* (IFA 2001). The guidance contained in the documents *Management of archaeological projects* (MAP 2), and *Research and archaeology: a framework for the Eastern Counties 1. Resource assessment* (EAA 3), *Research and archaeology: a framework for the Eastern Counties 2. Research agenda and strategy* (EAA 8), and *Standards for field archaeology in the East of England* (EAA 14) was also followed.

3 Archaeological background

- 3.1** The archaeological and historical setting of the Garrison redevelopment area has already been comprehensively explored in *An archaeological desk-based assessment of the Colchester Garrison PFI site* (CAT Report 97), with archaeological fieldwork ahead of the new garrison development providing an opportunity for detailed archaeological fieldwork including 12km of trial-trenching and two excavations.
- 3.2** The proposed site, like much of the land south and south-west of Colchester's modern town centre and the Roman walled town, falls within the area of the pre-Roman *oppidum* of Camulodunum, the Catuvellaunian royal estate. The only above-ground traces of this *oppidum* are the linear banks and ditches of the defensive dyke system that surrounded it. The Garrison area occupies the eastern edge of the *oppidum*, and one of the defensive dykes (the Berechurch Dyke) crosses the extreme south-eastern edge of the Garrison, on the east edge of Roman Barracks.
- 3.3** Map evidence suggests that this area was farmland in the 17th century, except for the remains of the medieval St John's abbey within its partially extant precinct wall, located partly within the Flagstaff House compound. Flagstaff House occupies the land along the north side of Napier Road. The two roads flank the north-western and western sides of the Abbey Field which has traditionally been used for Army training. Area H is located within the area of the former Le Cateau Barracks, formerly the Royal Artillery Barracks until 1893. These barracks were built in the early 1860s. The OS 1st Edition 1:10,560 map of 1874-1876 shows Area H as an open parade ground flanked by stable blocks to the south-west (within Area J1) and by barrack blocks to the north-east. The Sergeants' Mess, still standing within the southern part of Area H, is also shown; the Education Centre was not built until the 20th century. The Abbey Field is shown as the Army drill ground.
- 3.4** Prior to the Stage 1a evaluation of 2002 (CAT Report 206), two archaeological find spots were noted on the Urban Archaeological Database (UAD) held by the Colchester Museums Service of Colchester Borough Council (UAD nos 1022-1023). These were Roman pots for probable cremation burials of Roman date (CAT Report 97, map 4). However, despite the general lack of available information, the archaeological context of the area is now relatively well understood following a series of evaluations and excavations conducted in adjacent Garrison Urban Village (GUV) areas since 2000 (CAT Reports 206, 361).
- 3.5** The earliest activity in the vicinity of Area H is dated to c 2500-2000 BC. This takes the form of Late Neolithic pits associated with settlement found in 2004 in Taylor Woodrow redevelopment Areas C1 and C2 (approximately 400m and 500m to the west and south of Area H respectively). It is unlikely that features of this date will be encountered in Area H. There is also some evidence for later prehistoric activity in the vicinity: Middle Bronze Age vessels, probably burial urns, were found on the north-western boundary of redevelopment Area J1 in 1908 (UAD no 1247). A Late Bronze Age pit was excavated beneath Flagstaff Road during the installation of the storm-water drain by the Anderson Group in January 2006, while several Late Bronze Age settlement-related features were excavated in 2005 during the archaeological excavations for Taylor Woodrow on the northern edge of Area J1 North. As Area H borders Area J1 North, there was a potential for these Late Bronze

- Age features to extend into the Area H evaluation site. No clear traces of the Late Iron Age *oppidum* landscape have been identified in Area H.
- 3.6** With regard to Area H, the Roman period is of major importance. Most importantly, a stone-built monumental Roman circus, currently unique in Britain, has been discovered during excavations in Garrison Alienated Land (GAL) Areas C1, C2 and J1 and by other investigations elsewhere including the gardens of the Sergeants' Mess and the Education Centre at the south-eastern edge of Area H. Like the gardens of the Sergeants' Mess and the Education Centre, which incorporate remains of the circus, Area H will not be subject to intrusive works during redevelopment of the Garrison Alienated Land by Taylor Woodrow.
- 3.7** Further elements of the circus were located to the south-east of Area H in 2004 and 2005. These include the starting gates in the Sergeants' Mess garden, further wall foundations, a monument base on the central barrier and the curved eastern end of the circus uncovered during service works at Napier Road in 2006. As a result, the plan of the 450m-long and 75m-wide circus is now reasonably well understood. The development proposals for Area H will not impact the circus remains.
- 3.8** The other major Roman archaeological remains south of the Roman and modern town are parts of Colchester's Roman cemeteries. Before the Garrison Alienated Land investigations, there were indications of the presence of several burial grounds here, including a group of burials in the northern corner of the GUV Area J1 (J1 North), close to the entrance of Le Cateau Barracks (UAD nos 1022-1023, 1095). These appear to be on the southern fringe of a wide area of burials focused on the partially explored Butt Road cemetery (CAR 9, 4-202). Other informative excavations of Roman cemeteries in Colchester to date have been at Butt Road (CAR 9), the Abbey Field (CAT Report 138), Turner Rise (Shimmin 1998), and Handford House (CAT Report 323, in prep). Roman Colchester is particularly significant for the study of cemeteries and funerary practice in Britain, because the town represents a fusion of two different populations, ie the indigenous British community and an immigrant 'Roman' one, each of which had its own beliefs and funerary practices.
- 3.9** At least twenty-eight Roman burials were found during construction of the athletics ground and sports pitches to the immediate east of Circular Road North in 1925 (Hull 1958, no 200; UAD no 1099; TL 9940 2430). Trial-trenching and excavation in the same general area for the all-weather hockey pitch by CAT in 2000 recovered 73 more cremations, some only 300 mm below existing ground (CAT Report 97, no 4; TL 9954 2441). Further concentrations of Roman burials, a mixture of inhumations and cremations, have been excavated in 2004 and 2005 in GUV Area J1 North (360 burials) and Area C2 (66 burials) (CAT Reports 206, 361). The Area J1 North excavation lies directly to the south-east of the north-western edge of Area H, where the current trenching is focused.

4 Aims and strategy

The general aim of the evaluation was to recover sufficient evidence to characterise the nature, date, function and importance of the archaeological features within the affected area. The overarching research themes, as stated in the research design, are to:

- Inform how the landscape was used and to what level of intensification, prior to the construction of Camulodunum; are there further indications of late Neolithic and Bronze Age settlement?
- To elucidate the nature of spatial organisation within the *oppidum*,
- To address the question of the effect of the establishment of the Roman town on the agricultural hinterland,
- To elucidate the relative density of Roman burials and the influence of the recently discovered Roman circus across the northern zone of Colchester Garrison.

5 Results of the evaluation (Figs 2-5)

This section gives an archaeological summary of each of the seven trenches (T4-T10) trench with context and finds dating information. The trench numbers for the 2007 evaluation work follow the sequencing used in the 2002 evaluation of Area H (ie T1-T3: CAT Report 206).

Trench 4 (Figs 2-3)

T4 was excavated in the area of waste ground to the rear of the former Garrison Sergeants' Mess.

The stratigraphical sequence was as follows: the asphalt car-park surface was L1. This sealed L2 and L3, hogging and hardcore crush (base for the car-park surface). L3 sealed L4, a remnant modern topsoil (pre-dating the car-park), which sealed L5, a buried topsoil dated to the post-medieval period by the presence of peg-tile. L5 sealed the archaeological features, as described below. This stratigraphical sequence was repeated in all trenches cut through the car-park surface (ie T4, T5, T7, T8, T10).

A single feature was identified in T4, a quarry-pit (F39) which occupied the entire evaluation trench. F39 contained brick and coal fragments (not recovered), and is consequently dated to the post-medieval period. The quarry-pit was over 0.55m deep (not bottomed).

Trench 5 (Figs 2-3, 5)

As with T4, T5 was excavated in the area of waste ground to the rear of the former Garrison Sergeants' Mess. The stratigraphical sequence was as follows: the asphalt car-park surface was L1. This sealed L2 and L3, hogging and hard core crush (base for the car-park surface). L3 sealed L4, a remnant modern topsoil (pre-dating the car-park), which sealed L5, a buried topsoil dated to the post-medieval period by the presence of peg-tile. L5 sealed the archaeological features, as described below.

The trench contained four features. The only one of archaeological significance was a north-east/south-west aligned Roman ditch (F38) with finds of Roman brick and septaria (finds no 26). The ditch was 1m wide and was traced for 6m within the trench. The others were an east-west modern ditch (F35), a natural linear feature (F37), and a pit (F36).

F38 had concentrations of charcoal on its eastern edge. Finds from this context included a mid 2nd- to mid 3rd-century Roman sherd (finds no 26) and a mid 3rd-century radiate *antoninianus* of ?Gallienus (AD 253-68) or Claudius II (AD 268-70) (SF 2, finds no 25). It may be related to ditch F8 in T8, possibly forming plot divisions, with the T8 ditch bordering a burial area to the north and this T5 ditch potentially bordering the circus area located to the east. Modern ditch F35 was filled with redeposited natural sand and gravel. Finds consisted of modern pottery, tile and coal fragments (not retained) and residual Roman brick (finds no 23).

F36 and F37 were both natural in origin. Both had irregular profiles and highly leached-out fills with a high proportion of fine silt. It is likely that F36 has been caused by the removal of a tree, whereas the slightly linear nature of F37 suggests a glacial melt-water channel. F36 contained a Roman sherd and human bone (finds no 24). If we are correct in interpreting F36 as a tree-throw pit, then this material has been incorporated into this pit by accident.

There were no finds in the natural linear feature F37.

Trench 6 (Figs 2-3)

T6 was excavated in a grassed area on the Butt Road side of the evaluation site. It was cut through a modern topsoil (L7), which sealed buried topsoil L5. L5 in turn sealed the archaeological features described below.

T6 contained four features: two natural features (F20 and F22), a single Roman unurned cremation burial (F21), and modern building footings (F19).

Natural features included a linear feature (F20), probably a periglacial channel, and a natural pit feature (F22), the irregular profile of which suggests that it is a tree throw.

Pit F22 contained a single unurned cremation burial (F21). Cremated bone and pot sherds were observed in the upper fill. The feature was unexcavated and left *in situ* to be dealt with in a later excavation phase.

The remaining archaeological feature consisted of modern, poured concrete building footings F19, part of a now-demolished building associated with the Artillery Barracks. No finds were retrieved from T6.

Trench 7 (Figs 2-5)

T7 was excavated in the southern edge of the evaluation site.

The stratigraphical sequence was as follows: the asphalt car-park surface was L1. This sealed L2 and L3, hogging and hardcore crush (base for the car-park surface). L3 sealed L4, a remnant modern topsoil (pre-dating the car-park), which sealed L5, a buried topsoil dated to the post-medieval period by the presence of peg-tile. L5 sealed the archaeological features, as described below.

T7 contained eight archaeological features, five of which were burials; one cremation (F23) and four inhumations (F24-F27). The remaining three features were quarry-pits (F28-F29, F40). None of the burials were fully excavated (but they would need to be dealt with in a later excavation phase, if impacted by future development). The cremation burial contained a single cremation pot. The inhumation burials were initially identified by the shape of their cuts and confirmed by the presence of coffin nails. At the level to which they were explored in this evaluation, only one inhumation burial (F25) had visible human bones, ie a skull and fragments of long bones (?femur).

The cremation burial (F23) produced Roman sherds dated 1st-2nd/3rd century and 1st-early 2nd century, and cremated human bone (finds no 13). Inhumation burial F24 produced medieval sherds which are regarded as intrusive. Other finds in F24 were 1st- to 2nd-/3rd-century sherds, and cremated human bone (finds no 15). Inhumation burial F25 produced 1st- to 2nd-/early 3rd-century and 1st- to early 2nd-century sherds, and cremated human bone (finds no 16). Inhumation burial F26 contained a number of groups of Roman sherds which represent complete or partial vessels (all finds no 17). These were from three scorched or burnt pots, two of which date to the 2nd century and a third to the Roman period. This feature also contained cremated human bone (finds no 17). Inhumation burial F27 produced Roman sherds (finds no 14).

The remaining three features in T7 consisted of quarry-pits (F28-F29, F40). These were sectioned but not fully excavated due to depth constraints. They are similar to those noted in Area J1 North (CAT Report 361) and in current evaluation trench T4. There were finds of Roman pottery, brick and tile and human bone in these pits (finds nos 18-19). They were probably Roman roadside quarry-pits. Multiple Roman burials were found cut into the fills of similar quarry-pits in Area J1 North, to the immediate south of Area H. Indeed, one of the Roman quarry-pits re-used for burial in adjacent Area J1 North appears to continue into Area H T7 as F29.

Trench 8 (Figs 2-5)

T8 was excavated on the northern edge of Area H.

The stratigraphical sequence was as follows: the asphalt car-park surface was L1. This sealed L2 and L3, hogging and hardcore crush (base for the car-park surface). L3 sealed L4, a remnant modern topsoil (pre-dating the car-park), which sealed L5, a buried topsoil dated to the post-medieval period by the presence of peg-tile. L5 sealed the archaeological features, as described below.

The evaluation trench contained ten archaeological features, nine of which were inhumation burials (F9, F11-F18). One of the other features was a Roman ditch (F8), which may be associated with the Roman burials, as it contained a late 2nd- to mid 3rd-century Roman sherd (finds no 1). Another feature was a modern service trench (F10) which contained brick and asphalt (not retained).

None of the burials were fully excavated (but they would require full excavation if impacted by future development). The burials were identified by the shape of their cuts and also by the presence of coffin nails. Two of the inhumation burials were accompanied by grave goods: F15 contained an intact 2nd- to 3rd-century folded beaker (this was left *in situ*); and F13 contained hobnails representing the soles of a pair of shoes.

Inhumation burial F9 contained a residual ?Late Bronze Age sherd (finds no 9) and a Roman 1st- to 2nd-/3rd-century sherd (finds no 5). Inhumation burial F11 contained Roman brick and Roman sherds (finds no 2). Inhumation burial F12 contained a residual ?Late Bronze Age sherd, and 1st- to 2nd-/3rd-century Roman sherds (finds no 7). Inhumation burial F14 contained a fragment of a copper-alloy ring probably from a 1st- to early 2nd-century casket (SF 1, finds no 3), and Roman brick/tile fragments (finds no 4). Inhumation burial F15 contained Roman tile, and Roman sherds including a 3rd-century indented beaker (finds no 8). Inhumation burial F17 contained a residual prehistoric flint flake, Roman sherds, and a septaria lump (finds no 10). Inhumation burial F18 contained Roman and 1st- to 2nd-/3rd-century sherds (finds no 9). L5 contained 1st- to 2nd-/early 3rd-century Roman sherds (finds no 11).

The east-west orientated ditch F8 probably formed the southern boundary to an area of burials, some of which were recorded in T8. No burials were found in the five trenches to the south of this boundary (ie 2002 trenches T1-T3, or 2007 trenches T5 or T10; CAT Report 206).

Trench 9 (Figs 2-3, 5)

T9 was excavated in a grassed area on the Butt Road side of the evaluation site. It was cut through a modern topsoil (L7), which sealed buried topsoil L5. L5 in turn sealed the archaeological features described below.

T9 contained five features: a north-south aligned post-medieval ditch (F30), a set of modern, poured concrete foundations (F31), two east-west aligned Roman ditches (F32, F33), and a modern pit (F35). The two Roman ditches may be associated with the Roman cemetery area possibly located to the north, since no burials were located within this trench, within T10, or within the 2002 trench T2 to the south (CAT Report 206). There were also two unnumbered modern service trenches.

F32 contained residual Late Bronze Age sherds, burnt flint (presumably residual prehistoric), ?1st- to 2nd-century and 1st- to 2nd-/3rd-century Roman sherds, Roman brick and tile, tufa, septaria, and two hobnails presumably displaced from a Roman burial (finds no 20), and Roman tile (finds no 22). F33 contained residual Late Bronze Age sherds, and 1st- to 2nd-/3rd-century and early/mid 2nd- to late 3rd-/early 4th-century Roman sherds (finds no 21).

Trench 10 (Figs 2-3, 5)

T10 was excavated in a hard standing in the centre of the evaluation site. The stratigraphical sequence was as follows: the asphalt car-park surface was L1. This sealed L2 and L3, hogging and hardcore crush (base for the car-park surface). L3 sealed L4, a remnant modern topsoil (pre-dating the car-park), which sealed L5, a buried topsoil dated to the post-medieval period by the presence of peg-tile. L5 sealed the archaeological features, as described below, and they must remain undated, although a modern date is unlikely given the consolidated consistency of their fills.

T10 contained eight undated features: five post-holes (F1-F4, F16), a small pit F7, and two small gullies (F6-F7). None of these features produced finds, but their general characteristics and fills would suggest a Roman rather than post-medieval or modern date.

A modern service trench cut through the centre of T10, and through F5 and F6.

6 Finds

6.1 The small finds and bulk metalwork

by Nina Crummy

The assemblage contains several items that are primarily associated with funerary features. The copper-alloy ring (SF 1) is of a type used on 1st and early 2nd century caskets, several of which are known from burials. The recovery of two hobnails in association with iron structural nails is a combination that most often occurs in cremation burials or pyre-related features. The nail from L5 is uncorroded, a

characteristic of nails that have been scorched or burnt on a pyre. Several of the other nails are covered with an unusually heavy build-up of corrosion products mixed with sand, a characteristic of coffin nails from deep inhumation burials in natural sand.

SF 1. T8, F14 (finds no 3). Fragment of a copper-alloy ring with the characteristic channelled section of 1st- to early 2nd-century casket rings. Diameter 38 mm.

SF 2. T5, F38 (finds no 25). Copper-alloy coin: mid 3rd century radiate *antoninianus*, ?Gallienus (253-68) or Claudius II (AD 268-70). Maximum diameter 18 mm.

T9, F32. (finds no 20). Two hobnails. Lengths 17 and 15 mm.

Catalogue of iron nails (numerically by trench)

Trench 4

Finds no 22, F32, 1 complete, 1 incomplete. Lengths 76 mm, 43 mm.

Trench 5

Finds no 23, F05, shank fragment. Length 21 mm.

Trench 7

Finds no 15, F24, 3 complete, 1 incomplete, 1 shank fragments, 1 head. Lengths 40 mm, 54 mm, 67 mm, 39 mm, 22 mm, -.

Finds no 17, F26, 2 complete. Lengths 70 mm, 71 mm.

Finds no 14, F27, 2 complete. Lengths 57 mm, 65 mm.

Finds no 12, L05, complete, uncorroded. Lengths 28 mm.

Trench 8

Finds no 01, F08, incomplete. Length 73 mm.

Finds no 05, F09, 1 complete, 1 incomplete. Lengths 58 mm, 31 mm.

Finds no 06, F13, 4 complete, 2 incomplete (one with large head), 3 shank fragments.

Length (mm) 48 mm, 63 mm, 67 mm, 102 mm, 24 mm, 26 mm, 32 mm, 33 mm, 57 mm.

Finds no 08, F15, complete. Length 46mm.

Trench 9

Finds no 20, F32, 2 incomplete, 1 ?head. Lengths 42 mm, 58 mm, -.

Finds no 21, F33, 1 incomplete, 1 shank fragment. Lengths 38 mm, 50 mm.

6.2 The prehistoric pottery

by S Benfield

Introduction

There are eight small sherds (23 g) of prehistoric pottery. The fabric descriptions used here follow those devised for the recording of prehistoric pottery in Essex (Brown 1988, 263-4), as follows.

pottery form types:

Fabric B, Flint S-M 2

Fabric C, Flint S-M with occasional L

Fabric D, Flint S-L 2 poorly sorted

size of inclusions:

S - small (<1 mm)

M - medium (1-2 mm)

L - large (>2 mm),

density of inclusions:

1 - less than 6 per square cm

2 - 6 to 10 per square cm

3 - more than 10 per square cm.

Prehistoric pottery discussion

The quantity of prehistoric pottery is small. The eight sherds recovered are small, having an average sherd weight of about 2.9 g. Two of the sherds, one from F9 (T8) and another from F33 (T9), are abraded. All of the sherds are flint-tempered. The surface colour of the sherds is either dark-brown or black, or red-brown. There are several sherds from thin-walled (4-5 mm-thick) fine ware vessels; one sherd from F32 (T9 finds no 20) and three sherds from F33 (T9, finds no 21).

Most, if not all, the prehistoric pottery can be dated as Late Bronze Age. While a number of the sherds themselves suggest a Late Bronze Age date, this dating can be more confidently assigned by comparison with an assemblage of Late Bronze Age plain ware (dated c 1000-900 BC) from Area J1 North, immediately south of the current evaluation site (Sealey forthcoming). Among the pottery from that site, oxidised red to brown coloured surfaces are evident on the Late Bronze Age pottery, as is the use of fine flint-temper and the presence of fine ware vessels in the Area J1 North assemblage.

Catalogue of prehistoric pottery

Trench 8

F9. Finds no 9 (2 g); Fabric C, small abraded flint-tempered sherd.

F12. Finds no 7 (2 g); Fabric B, flint-tempered sherd, outer surface flaked away.

Trench 9

F32. Finds no 20 (5 g); Fabric B, moderately thin (5 mm) flint-tempered sherd (3 g);
Fabric B, flint-tempered sherd (2 g).

F33. Finds no 21 (14 g); Fabric B, 3 moderately thin (4 mm) flint-tempered sherds
(8 g); Fabric D, abraded flint-tempered sherd (6 g).

6.3 Roman pottery

by S Benfield

Introduction

There is just under 3 kg (2,827g) of pottery from the evaluation. The pottery has been recorded using the Roman pottery fabric type series devised for CAR 10, in which the fabrics are recorded as two-letter codes. These letter codes, together with the full fabric name, are set out in Table 1. Where appropriate, the fabric code for the National Roman Fabric Reference Collection has been included (Tomber & Dore 1998). The pot forms were recorded, where possible, using the Camulodunum (Cam) Roman pottery form type series (Hawkes & Hull 1947; Hull 1958). Samian vessels are recorded using Dragendorff (Dr) form numbers or other common form type references following those used in Webster (1996). The pottery fabrics and the vessel forms present in each site context were recorded for each finds number (table in archive). The number of sherds was recorded for each fabric, and the identifiable pottery forms present in each fabric type. The total weight of pottery and an overall spot date was recorded for each finds number.

Table 1: Roman pottery fabrics.

Fabric code	Fabric name	National Roman Fabric Reference Collection code
AJ	amphoras, Dressel 20	BAT AM 1, BAT AM 3
BA	plain samian	
EG	East Gaulish plain samian	
DJ	coarse oxidised and related wares	COL WH
DZ	fine oxidised wares	
GB	BB2: black-burnished ware, category 2	COL BB2
GX	other coarse wares, principally locally-produced grey wares	

Roman pottery discussion

The date range of the pottery fabrics and form types spans the 1st-late 3rd/early 4th century, although there is nothing that needs date later than the mid-late 3rd century. This is to some extent supported by the absence of late Roman (mid 3rd- to 4th-century) fabrics such as Nene Valley colour-coated wares (Fabric EA) and oxidised Hadham wares (Fabric CH). This date range matches that for the majority of the pottery associated with a large number of Roman burials excavated on Area J1 North, immediately to the south of the current evaluation site (Benfield forthcoming). However, it should be borne in mind that the quantity of pottery

recovered from the evaluation is not large and the number of fabric types recorded is small (6), so that the sample may not be entirely representative.

The early Roman pottery consists of vessel forms and fabrics that cannot be more closely dated than 1st-early 2nd century. These are sherds from bowls of form Cam 243-244/246, from F32 (T9, finds no 22), and Cam 218 from F25 (T7, finds no 16). Also, there is a probable example of the jar form Cam 266 from F23 (T7, finds no 13). The latest closely dated vessel is a whole pot which was briefly examined *in situ* but not lifted. The vessel was in the fill of F15 (T8), which appeared to be a grave cut for an inhumation burial. The pot is a tall indented beaker, with a tall slightly flaring rim and narrow base. The form is Cam 407, and dates from the second quarter of the 3rd century to the 4th century. The fabric appeared dark grey and burnished, and so is probably BB2 (black-burnished ware category 2, Fabric GB). The fabric also supports the same date range as the form. From F29 (T7, finds no 19) there is a sherd from a bowl of form Cam 37B (Fabric GB) dated late 2nd to mid-late 3rd century. Also there are two sherds of East Gaulish samian (Fabric BA(EG)). One, from F8 (T8, finds no 1), is from a dish of form Dr 31 dated late 2nd-mid 3rd century; the other, from F38 (T5, finds no 26), is from a Dr 38 bowl dated mid 2nd-mid 3rd century.

There are three vessels which may have been disturbed from burials or features with pyre debris. Among the pottery recovered from F26 (T7, finds no 17), there is one partial pot, a Cam 278 jar, and a number of sherds that are probably all part of one flagon. Some of the flagon sherds appear scorched or burnt and the jar is sooted externally. Several other sherds in grey ware (Fabric GX) from the same context are also sooted externally. As partial pots, these could have been displaced from burials. The flagon is broken in sherds, some of which appear burnt, so this vessel may have been placed on a pyre. The sooting on the jar could also have come from having been placed on a pyre, but could equally have been caused during normal use as a cooking vessel. The same applies to the few grey ware sherds. The occurrence of these burnt or heated vessels together suggests that they could represent vessels associated with a pyre feature or a cremation burial that included pyre material. This seems especially likely for the flagon, as otherwise it would not usually be expected for a vessel of this type to show signs of having been heated or burnt. The other partial vessel that may have been displaced from a burial is a bowl of form Cam 243-244/246 from F32 (T9, finds no 22).

Catalogue of Roman pottery

Trench 5

F36. Finds no 24 (23 g); Fabric GX. 1 sherd, Roman.

F38. Finds no 26 (57 g); Fabric BA(EG). 1 sherd, Dr 38, mid 2nd-mid 3rd century.

Trench 7

F23. Finds no 13 (77 g); Fabric DJ, 1 sherd, 1st-2nd/3rd century; Fabric GX, 9 sherds, ?Cam 266, 1st-early 2nd century.

F24. Finds no 15 (62 g); Fabric DJ, 2 sherds, 1st-2nd/3rd century; Fabric GX, 4 sherds, Roman.

F25. Finds no 16 (651 g); Fabric AJ, 1 sherd, 1st-2nd/early 3rd century; Fabric GX, 30 sherds, Cam 218 (partial pot), 1st-early 2nd century.

F26. Finds no 17 (420 g); Fabric DJ, 20 sherds, sherds probably mostly from one pot, some appear scorched or burnt, Cam 155 or Cam 156, probably early 2nd to mid-late 2nd century; Fabric GB, 13 sherds, Cam 278, partial pot in sherds, sooted externally, early-mid 2nd to late 2nd century; Fabric GX, 7 sherds, some sherds sooted externally, Roman.

F27. Finds no 14 (38 g); Fabric GX, 6 sherds, Roman.

F28. Finds no 18 (40 g); Fabric GX, 8 sherds, Roman.

F29. Find no 19 (24 g); Fabric GB, 1 sherd, Cam 37B, late 2nd to mid-late 3rd century; Fabric GX, 1 sherd, Roman.

L5. Finds no 12 (40 g); Fabric GX, 3 sherds, Roman.

Trench 8

F8. Finds no 1 (10 g); Fabric BA(EG), 1 sherd, Dr 31, late 2nd-mid 3rd century.

F9. Finds no 5 (8 g); Fabric DJ, 1 sherd, sherd from a narrow vessel with ?rippled surface, 1st-2nd/3rd century.

F11. Finds no 2 (11 g); Fabric GX, 2 sherds, Roman.

- F12. Finds no 7 (38 g); Fabric DJ, 1 sherd, 1st-2nd/3rd century; Fabric GX, 3 sherds, ?Cam 270B, 1st-2nd/3rd century.
- F15. Finds no 8 (8 g); Fabric GX, 2 sherds, Roman.
- Also a whole pot examined *in situ* but not lifted, Fabric GB, Cam 407, tall indented beaker, with a tall slightly flaring rim and narrow base, dated as second quarter of the 3rd century-late 3rd century.
- F17. Finds no 10 (55 g); Fabric GX, 4 sherds, Roman.
- F18. Finds no 9 (9 g); Fabric GX, 1 sherd, Fabric GX, type 142 neckless beaker with bead rim, Roman ?1st-2nd/3rd century.
- L5. Finds no 11 (537 g); Fabric AJ, 2 sherds, 1st-2nd/early 3rd century; Fabric GB, 1 sherd, Cam 37A, early 2nd-late 2nd/early 3rd century.

Trench 9

- F32. Finds no 20 (452 g); Fabric DJ, 1 sherd, 1st-2nd/3rd century; Fabric DZ, 1 sherd, ?1st-2nd century; Fabric GX, 22 sherds, base sherd has post-firing hole made through it, Roman ?1st-2nd century.
- F32. Finds no 22 (199 g); Fabric DJ, 2 sherds, 1st-2nd/3rd century; Fabric GX, 8 sherds, Cam 243-244/246, partial pot, 1st-early 2nd century.
- F33. Finds no 21 (68 g); Fabric DJ, 2 sherds, 1st-2nd/3rd century; Fabric GB, 1 sherd, Cam 278, early 2nd to mid-late 3rd century; Fabric GX, 10 sherds, Cam 268, early/mid 2nd-late 3rd/early 4th century.

6.4 The post-Roman pottery

by H Brooks

Description of pottery

Fabrics present are as follows (CAR 7): Fabric 21 (sandy orange ware) and Fabric 21a (Colchester-type ware).

Catalogue

Trench 7

Finds no 15, F24: Fabrics 21, 21a. Group date: 13th to 16th centuries.

This is a very small group of material (two sherds, weighing 13 grammes), dating to the 13th to 16th centuries.

6.5 Other finds

A list of the weights and quantities of all finds from the evaluation can be found in the archive.

7 Discussion

7.1 Prehistoric

No prehistoric features were identified in this evaluation, but the presence of eight sherds of probable Late Bronze Age pottery (in residual contexts in T8 and T9, on the northern side of the evaluation site), demonstrates prehistoric activity of some type on this site. The discovery of prehistoric sherds is interesting in the context of other discoveries of similar material in this area. Perhaps surprisingly, there was no prehistoric material from the extensive excavation of the Roman cemetery at Butt Road, which is only 200m to the north. However, Late Bronze Age sherds and settlement-related features were found in evaluation Area J1, to the south of the current site (CAT Report 361). This would indicate that prehistoric settlement favoured the slightly higher ground (above the 30m contour) to the south of the valley the line of which is now followed by Southway.

7.2 Roman

Two local Roman cemeteries provide the main archaeological context for the Area H evaluation. The first is the Butt Road Roman cemetery excavated in the 1970s and 1980s (CAR 9). This lies only 150m north of Area H. The second is the Roman cemetery excavated in Garrison Area J1 North in 2004. This lies immediately south of Area H (CAT Report 361). In Period 1, phase 2 of the Butt Road cemetery (?3rd century to c AD 300/320; CAR 9, 4), the site was subdivided into plots by ditches,

and a few cremations and uncoffined inhumations followed. Later, in Period 1, phase 3 (c AD 270-330; *ibid*), a more formally-arranged pagan inhumation cemetery with north-south aligned inhumations was laid out across the site. In Period 3 (c AD 330-400+), the alignment of graves switched to east-west, at a time which appears to coincide with the official coming of Christianity to Britain.

The excavation of Area J1 North revealed a large number of Roman burials, ie 352 in the excavation and four in the evaluation, breaking down into 207 inhumation burials, 70 urned cremation burials, 20 unurned cremation burials, 37 burial pits containing pyre debris, 13 pyres/*busta*, and 5 pot scatters possibly from disturbed burials. The burials were bounded to the south/south-west by a Roman road, the alignment of which the burial ground appears to follow. The extent of the burial area to the north and east of the site was not found.

Unlike the Butt Road cemetery (above), no distinct burial plots were identified. There were five shallow Roman gullies, most of them cut by burials, but it was difficult to ascertain whether they represented the boundaries to burial plots or some other form of activity. Nevertheless, it remains a possibility that these were originally plot boundaries which became redundant when or because they were cut by later burials.

These Area J1 North burials dated from the 1st/2nd to the mid/late 3rd century, mostly 1st to 2nd century. Unlike the Butt Road burials, none dated from the 4th century. There appears to be no distinct date range for the use of the inhumation or cremation burial rites on Area H, ie cremations are usually early Roman and inhumations usually later, but this is not the case in Area C2 and Area J1 North where cremations and inhumations follow no such pattern and are mixed together throughout. However, a more detailed analysis of the dating and stratigraphic relationships of the burials may shed more light on this.

The issue of how the Area H evaluation ties in with the evidence from the Butt Road cemetery and Area J1 North requires careful consideration. Clearly, this relationship is a complex one. However, a few initial thoughts can be offered here. Superficially, the boundary ditches in T8 and T9 on the north edge of Area H may be seen to be in the tradition of the Butt Road cemetery plot boundaries. In this sense, the ditch in T8 may demarcate the southern extent of a plot, because no burials were found to its south (in the central area of Area H). The plots at the Butt Road cemetery were initially occupied by a few cremations and uncoffined inhumations, and, later, by inhumations of the late 3rd/early 4th and 4th century. It would be tempting to see the inhumations in T8 in the same way, as an extension southwards of the Butt Road cemetery. However, this is not confirmed by the pottery dating, which indicates an earlier date for the inhumations in T8, ie 2nd or 3rd century, than those at the Butt Road cemetery. The four inhumations in T7 are also earlier than the examples from the Butt Road cemetery. In summary, the earlier burials are to the south, and the later ones to the north. This dating confirms the general pattern observed elsewhere in the Roman town, that inhumation burials progressively move closer to the town during the Roman period (P Crummy *pers comm*).

The inhumations and the cremation from T6 are clearly part of the Area J1 North burial area which appears to extend approximately 40m out to the north-east from the edge of the road within Area J1 North, the line of which they follow. This apparent cemetery edge (see Fig 2) appears to be defined by the lack of burials in the three trenches dug in 2002 (CAT Report 206, fig 8) and in trenches T4, T5, T9 and T10 of this evaluation. The combined 2002 and 2007 evaluations have therefore identified what appear to be two separate cemetery areas. As indicated above, it is considered unlikely that the burials in T8 are part of the Butt Road cemetery and thus must represent a separate, earlier burial plot extending to the north of Area H.

One aspect which will need to be explored is the residuality of the pots in the inhumations. As S Benfield points out above (section 7.2), some of these pots look as though they have been displaced from earlier burials. An explanation for this could be that pots from an earlier cremation phase have been displaced and are residual in the fills of later inhumations. In their general dating, the Area H burials seem closer to the Area J1 North burials, and may be part of the same cemetery tradition.

The centre of Area H failed to reveal any burials, so it would seem that there is an empty plot here, with burials to either side (north and south). It should be noted that the identified burials were not fully excavated in this evaluation, and some categories of normal grave finds are missing for that reason, particularly glassware and bone pins. However, the copper-alloy ring (SF 1 from T8), probably from a 1st- or early 2nd-century casket which had been placed in a burial, gives an indication of the type of grave goods which may be revealed by full excavation.

The other major category of Roman feature were the quarry-pits within T7, which are themselves likely to contain Roman burials.

7.3 Anglo-Saxon

There were no finds or features of this period.

7.4 Medieval

Medieval finds are limited to two sherds. Little can be said about such small amounts.

7.5 Post-medieval

The post-medieval period is represented by a quarry-pit in T4.

7.6 Modern

Modern features consist of poured concrete foundations of recent Army buildings, as exposed in T6 and T9. These were formerly part of the Le Cateau Barracks.

8 Acknowledgements

CAT and RPS would like to thank Taylor Woodrow for commissioning and funding the work.

The project was managed by B Holloway, and the site work was carried out by L Driver, B Hurrell, C Lister, P Skippins and A Wightman, and with digital survey carried out by C Lister assisted by B Holloway.

The project was monitored for Colchester Borough Council by Martin Winter (Archaeology Officer), and for RPS by Rob Masfield.

9 References

- | | | |
|----------------------|--------------|--|
| Benfield, S | forth-coming | 'The Roman pottery', in CAT Report 412 |
| Brown, N | 1988 | 'A Late Bronze Age enclosure at Lofts Farm, Essex', <i>Proceedings of the Prehistoric Society</i> , 54 , 249-302 |
| CAR 7 | 2000 | <i>Colchester Archaeological Report 7: Post-Roman pottery from excavations in Colchester 1971-1985</i> , by J Cotter |
| CAR 9 | 1993 | <i>Colchester Archaeological Report 9: Excavations of Roman and later cemeteries, churches and monastic sites in Colchester, 1971-88</i> , by N Crummy, P Crummy and C Crossan |
| CAR 10 | 1999 | <i>Colchester Archaeological Report 10: Roman pottery from excavations in Colchester, 1971-86</i> , by R P Symonds and S Wade, ed by P Bidwell and A Croom |
| CAT
CAT Report 97 | 1999 | <i>Policies and procedures</i>
An archaeological desk-based assessment of the Colchester Garrison PFI site, unpublished CAT archive report, by Kate Orr, 2000 |
| CAT Report 138 | | Archaeological excavations at the Garrison sports pitch, Circular Road North, Colchester, Essex (Abbey Field), dates February-March 2000, unpublished CAT archive report, by Carl Crossan, 2001 |
| CAT Report 206 | | An archaeological evaluation by trial-trenching in Areas A, B, D, GJ, H, J, N, V and YP of the Colchester Garrison PFI site Colchester, Essex, June-July 2002, unpublished CAT archive report, by H Brooks, 2002 |

CAT Report 323	in prep	An archaeological excavation at Handford House, 1 Queens Road, Colchester, Essex (now 'Handford Place'), February 2003-April 2004. Unpublished CAT client report, by Kate Orr
CAT Report 361		Assessment report on the archaeological investigations carried out on Areas C1, C2, E, J1, O, Q, and S1 of the Alienated Land, Colchester Garrison, including the Time Team trenches and the Alienated Land watching brief, unpublished CAT archive report, by L Pooley, B Holloway, P Crummy and R Masefield, 2006
CAT Report 412	forth-coming	Report on the archaeological investigations carried out on Areas C1, C2, E, J1, O, Q and S1 of the Alienated Land, Colchester Garrison, including the Time Team Trenches and the Alienated Land watching brief, May 2005-January 2006, CAT archive report, by L Pooley, B Holloway, P Crummy & R Masefield
CM	2002	<i>Guidelines on standards and practices for archaeological fieldwork in the Borough of Colchester</i>
CM	2003	<i>Guidelines on the preparation and transfer of archaeological archives to Colchester Museums</i>
EAA 3	1997	<i>Research and archaeology: a framework for the Eastern Counties 1. Resource assessment</i> , East Anglian Archaeology, Occasional Papers, 3 , ed by J Glazebrook
EAA 8	2000	<i>Research and archaeology: a framework for the Eastern Counties 2. Research agenda and strategy</i> , East Anglian Archaeology, Occasional Papers, 8 , ed by N Brown and J Glazebrook
EAA 14	2003	<i>Standards for field archaeology in the East of England</i> , East Anglian Archaeology, Occasional Papers, 14 , ed by D Gurney
Hawkes, C F C, & Hull, M R	1947	<i>Camulodunum, first report on the excavations at Colchester 1930-39</i> , RRCSAL, 14
Hull, M R	1958	<i>Roman Colchester</i> , RRCSAL, 20
IFA	1999	<i>Standard and guidance for archaeological field evaluation</i>
IFA	2001	<i>Standard and guidance for the collection, documentation, conservation and research of archaeological materials</i>
MAP 2	1991	<i>Management of archaeological projects</i> , second edition (English Heritage)
RPS	2002	<i>Colchester Garrison Alienated Land outline archaeological project strategy proposal and quality plan</i>
RPS	2004	<i>Research design for archaeological evaluations, excavations and watching briefs on Alienated Land, new garrison, Colchester</i>
RPS in association with CAT	2006	<i>Written Scheme of Investigation (WSI) for Stage 1b archaeological trial-trenching evaluation, Area H, Colchester Garrison, Colchester</i>
Sealey, P	forth-coming	'The prehistoric pottery', in CAT Report 412
Shimmin, D	1998	'Asda superstore site', <i>The Colchester Archaeologist</i> , 11 , 13
Tomber, R, & Dore, J	1998	<i>The National Roman Fabric Reference Collection, a handbook</i> , MOLAS, Monograph, 2
Webster, P	1996	<i>Roman samian pottery in Britain</i> , CBA Practical handbook in archaeology, 13

10 Abbreviations and glossary

Anglo-Saxon	post-Roman, AD 410 to c AD 1066
AOD	Above Ordnance Datum
Bronze Age	2500 BC to c 700 BC
CAT	Colchester Archaeological Trust
CBC	Colchester Borough Council
CM	Colchester Museums
context	specific location on an archaeological site, especially one where finds are made
EHER	Essex Historic Environment Record

feature	an identifiable thing like a pit, a wall, a drain, a floor; can contain 'contexts'
IFA	Institute of Field Archaeologists
medieval	c AD 1066 to c AD 1500
modern	c 1800 to the present day
natural	geological deposit undisturbed by human activity
Neolithic	the New Stone Age, ie the period of the first farmers, c 4000 BC to c 2500 BC
NGR	National Grid Reference
post-medieval	c AD 1500 to AD 1800
prehistoric	belonging to the Stone Age, Bronze Age or Iron Age (before the Romans)
residual	an early find in a late context (eg a Roman coin in a Victorian pit)
Roman	the period from AD 43 to around AD 430
RPS	RPS Planning (project consultants)

11 Archive deposition

The paper and digital archive is currently held by the Colchester Archaeological Trust at 12 Lexden Road, Colchester, Essex CO3 3NF, but it will be permanently deposited with Colchester Museums, under accession code COLEM 2006.127.

© Colchester Archaeological Trust 2007

Distribution list:

Taylor Woodrow
RPS Planning
Martin Winter, Archaeology Officer for Colchester Borough Council
Essex Historic Environment Record, Essex County Council

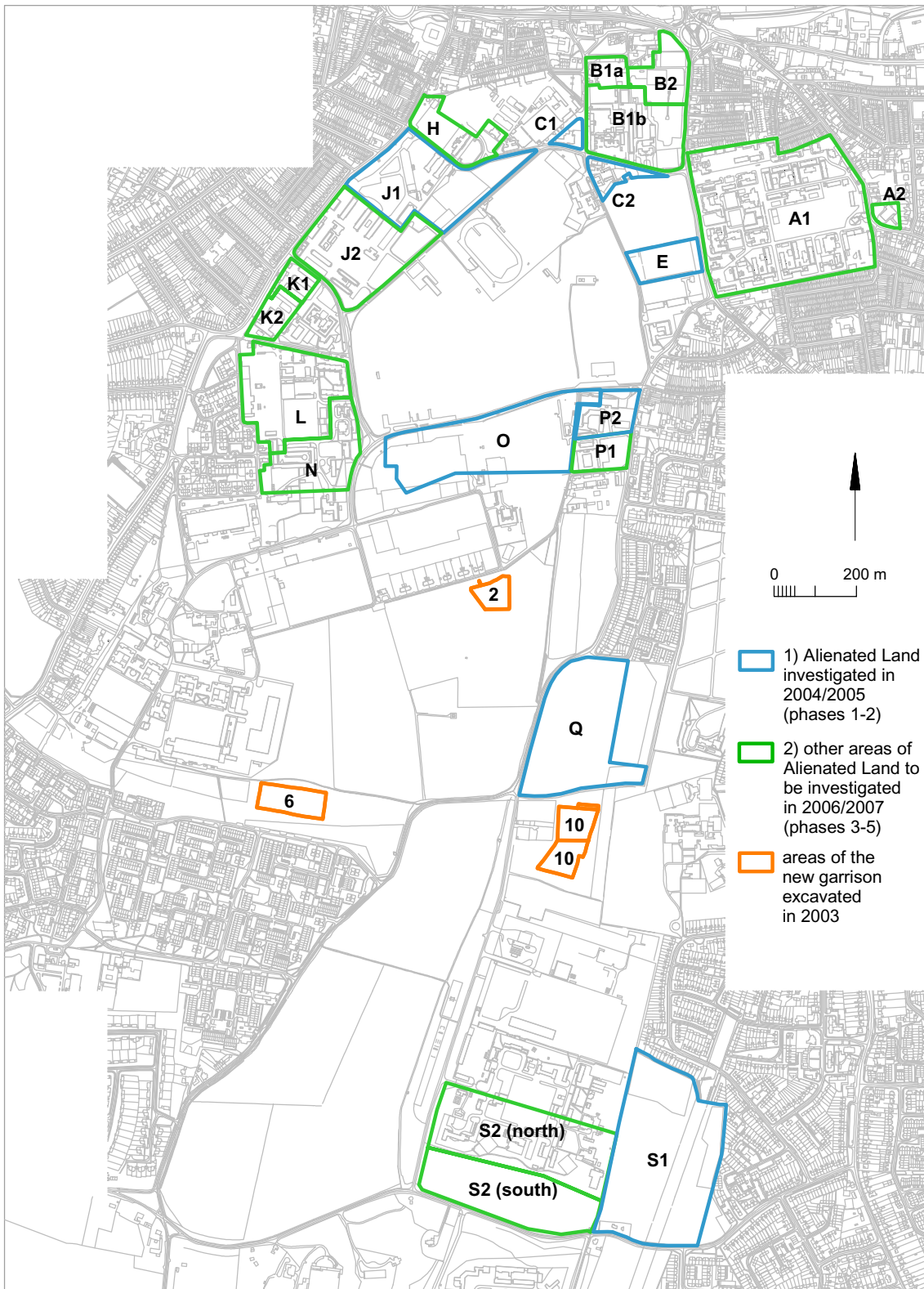


Colchester Archaeological Trust

12 Lexden Road,
Colchester,
Essex CO3 3NF

tel.: (01206) 541051
(01206) 500124
email: archaeologists@catuk.org

Checked by: Philip Crummy
Date: 16.04.07



© Crown copyright. All rights reserved. Licence number 100039294.

Fig 1 Colchester Garrison, showing location of Alienated Land.

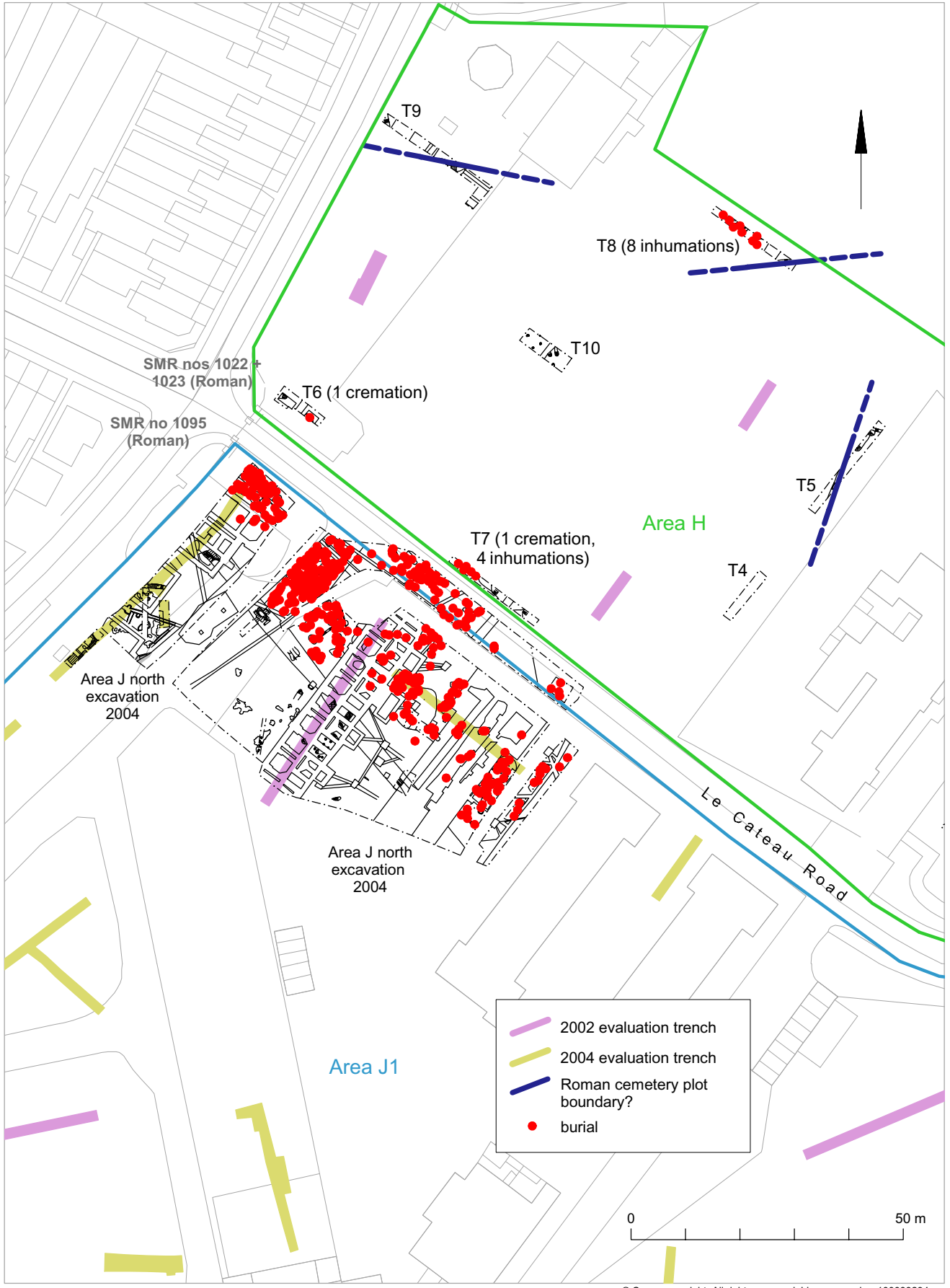


Fig 2 Location of T4-T10, showing previous trenching in Area H and location of newly discovered burials.

© Crown copyright. All rights reserved. Licence number 100039294.

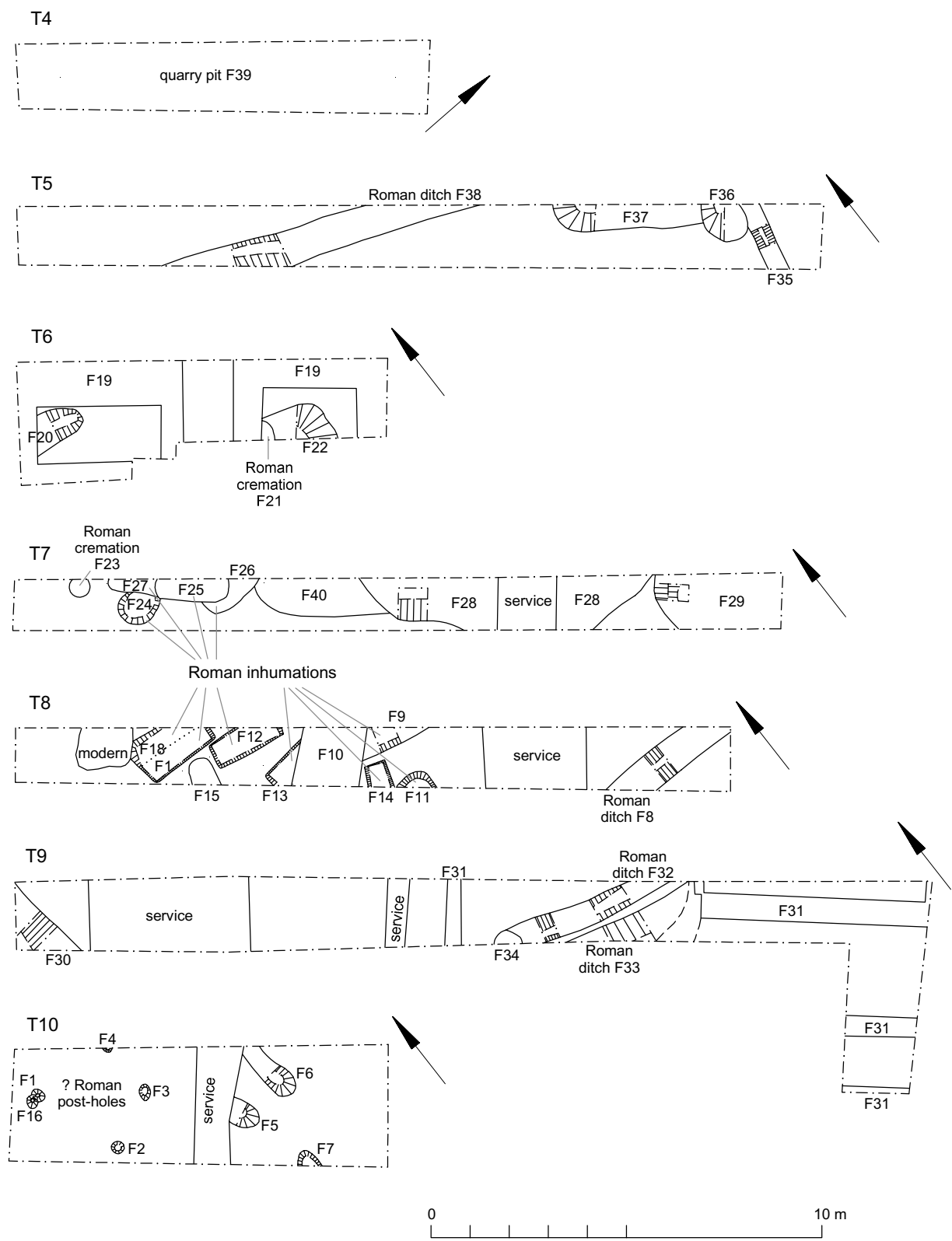


Fig 3 T4-T10: plans.

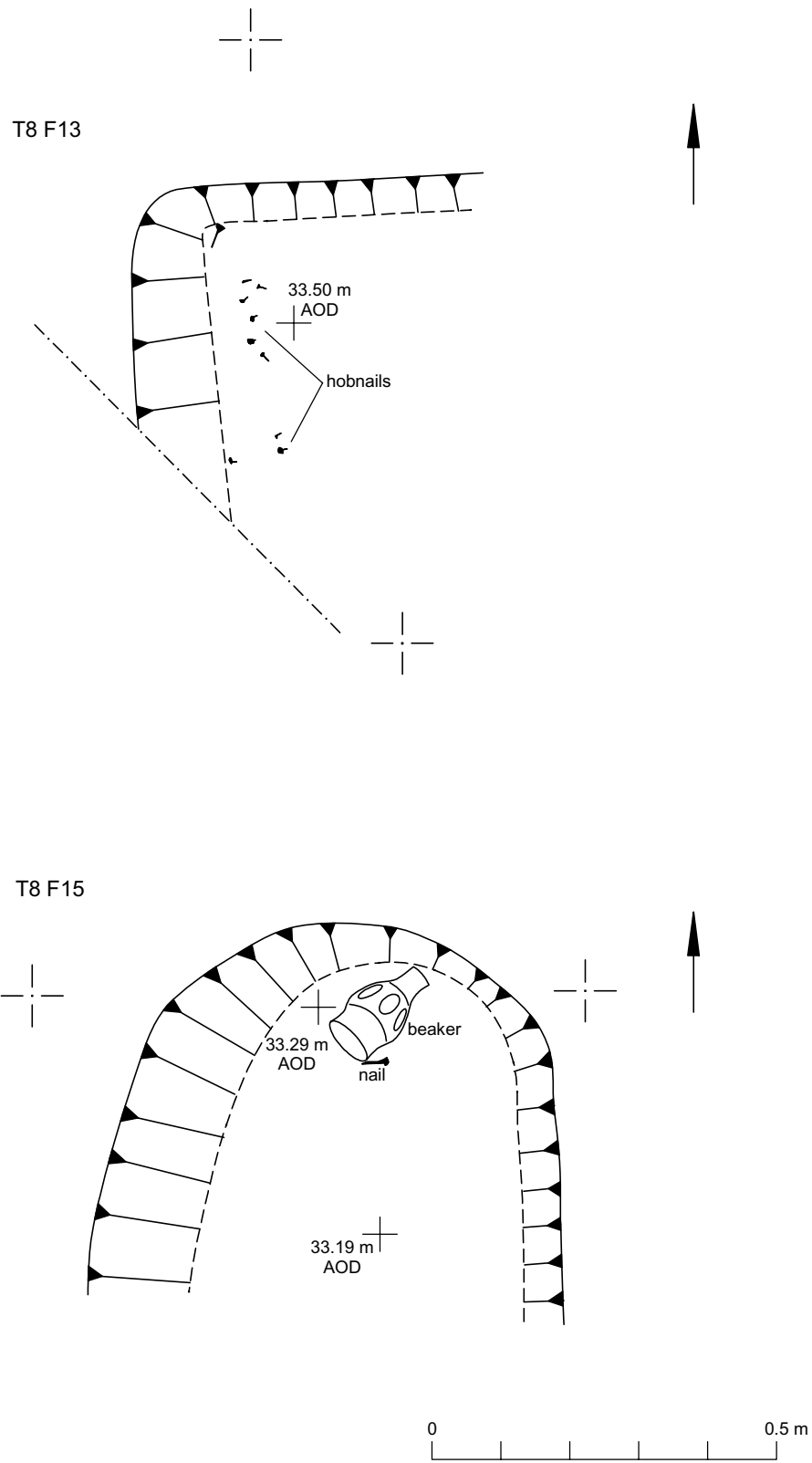


Fig 4 T8: plans.

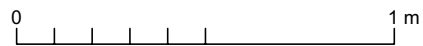
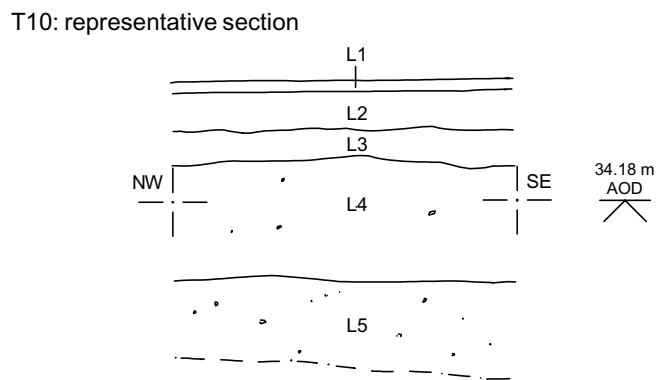
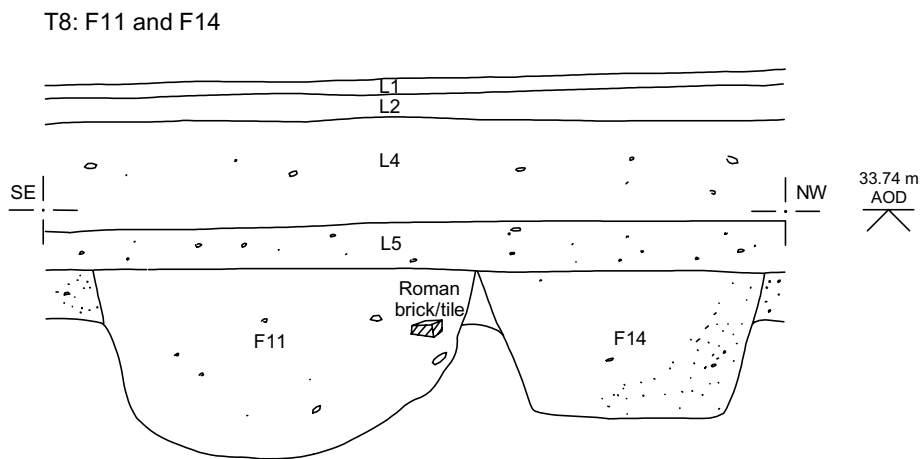


Fig 5 T7, T8 and T10: sections.

Essex Historic Environment Record/ *Essex Archaeology and History*

Summary sheet

Site address: Alienated Land Area H, Colchester Garrison, Colchester, Essex	
Parish: Colchester	District: Colchester
NGR: TL 99300 24600 (c)	Site code: Museum accession code 2006.127
Type of work: Evaluation	Site director/group: Colchester Archaeological Trust
Date of work: January-February 2007	Size of area investigated: 7 trenches (total length 116m, total trench area 209m ²)
Location of finds/curating museum: Colchester Museums	Funding source: Developer
Further seasons anticipated? Yes	Related UAD nos: 1022, 1023, 1095, 1099, 1247
Final report: CAT Report 413 and summary in <i>EAH</i>	
Periods represented: Roman, post-medieval, modern	
<p>Summary of fieldwork results: <i>An archaeological evaluation by seven trial-trenches revealed two Roman cremation burials and twelve Roman inhumation burials. A number of east-west and north-south aligned ditches may define the boundaries of discrete burial plots. The dating of the burials is closer to those excavated in 2004 on Garrison Area J1 North (immediately to the south) than to those excavated at Butt Road in the 1970s and 1980s (150m to the north of Area H). The burials were not excavated fully; it is anticipated that excavation will be completed during a later stage of archaeological work.</i></p>	
Previous summaries/reports: CAT Report 206	
Author of summary: Howard Brooks and Ben Holloway	Date of summary: April 2007