

Former Ravenstone School, Ravenstone, Leicestershire

PHOTOGRAPHIC RECORDING



understanding heritage matters

Archaeology Warwickshire Report No 15101
DECEMBER 2015



*Working for
Warwickshire*

Project: The former Ravenstone School, Ravenstone
Commissioned by: Cameron Homes
Project Report No. 15101
Site Code: CR14
Planning Reference: 14/00051/FULM
National Grid Reference: SK 4028 1391
Team:
Project Manager: Stuart Palmer MCIfA
Fieldwork: Caroline Rann BA
Author: Caroline Rann BA
Illustrations: Candy Stevens
Report checked by: Stuart Palmer MCIfA
Date: December 2015
Report reference: Rann, C, 2015 *Former Ravenstone School, Ravenstone, Leicestershire: Photographic Recording*, Archaeology Warwickshire Report 15101

Archaeology Warwickshire

Unit 9

Montague Road

Warwick

CV34 5LW

01926 412278

fieldarchaeology@warwickshire.gov.uk

www.warwickshire.gov.uk/archaeology

CONTENTS		Page
	Summary	2
1	Introduction	2
2	Site Location	3
3	Historical Background	3
4	Aims and Methods	3
5	Results	3
	Acknowledgements	12
	References	12

PHOTOGRAPHS

1	Front of former school building from road	3
2	New extension to school	4
3	Front porch	4
4	Front door (blocked)	5
5	SW elevation	5
6	SW elevation vent detail	6
7	Rear of school	6
8	NE elevation	7
9	Door to school, now within modern extension	7
10	Classroom A	8
11	Classroom A	8
12	Classroom A roof detail	9
13	Classroom B	9
14	Classroom B	10
15	Classroom B	10
16	Classroom B roof detail	11
17	Classroom B roof detail	11
18	Classroom A corbel detail	12

FIGURES

1	Site location	13
2	Direction of external photographs	13
3	Direction of internal photographs	14

SUMMARY

A basic level photographic survey was carried out on the Former Ravenstone School, Ravenstone, Leicestershire prior to its redevelopment. The main survey was carried out on the 4th November 2014 with additional photographs taken in January 2015 showing the roof when exposed during construction works. The building was constructed in 1859 and was modified in the late 19th-century to create further classrooms. A late-20th century extension was added on to the front. More recently, the school has been relocated to a new site on Heather Road and the original site is being converted to dwellings.

1 INTRODUCTION

1.1 Photographic recording was carried out on behalf of Cameron Homes using a Nikon D3200 DSLR Camera. The work formed part of the mitigation of a development of the former school building and land to the rear. Permission was granted by North west Leicestershire District Council (14/00051/FULM). A Heritage Assessment Statement of the impact on the former school was included with the planning application (Burton-Pye 2013). The archive will be stored at the Leicestershire County Council Museums Service under the accession no X.A140.2014.

1.2 Following the archaeological evaluation of the land to the rear, where medieval village remains were found, an area of strip, map and sample excavation was carried out (Rann, forthcoming).

2 SITE LOCATION

2.1 The school is set back from Church Lane, Ravenstone with an area of tarmac to the front. To the rear there is a former playground, garden and pond. The school is located at NGR SK 4028 1391 (Fig 1).

3 HISTORICAL BACKGROUND

3.1 The school was built in 1859 by R G Cresswell esquire (Burton-Pye 2013). It was known as The National School in White's Directory from 1863 (ibid). The earliest depiction of the school is from the 1883 Ordnance Survey map 1:2500 (Fig 2). At this time the school had a rectangular plan. It was extended by 1903 (1903 Ordnance Survey map 1:2500).

3.2 Internal alterations to the school included an internal screen in the main school room erected by 1910 (Burton-Pye 2013).

4 AIMS AND METHODS

4.1 The aim of the photographic recording is to create a record of the school building as it stands, before any conversion works take place.

5 RESULTS

5.1 External photographs as indicated on Fig 2 and internal on Fig 3.



Photograph 1: Front of former School building from road



Photograph 2: New extension to school



Photograph 3: Front porch



Photograph 4: Front door (blocked)



Photograph 5: SW elevation



Photograph 6: SW elevation vent detail



Photograph 7: Rear of school



Photograph 8: NE elevation



Photograph 9: Door to school, now within modern extension



Photograph 10: Classroom A



Photograph 11: Classroom A



Photograph 12: Classroom A roof detail



Photograph 13: Classroom B



Photograph 14: Classroom B



Photograph 15: Classroom B



Photograph 16: Classroom B roof detail



Photograph 17: Classroom B roof detail



Photograph 18: Classroom A corbel detail

ACKNOWLEDGEMENTS

Archaeology Warwickshire would like to thank Adam Routley of Cameron Homes for commissioning the project and facilitating access to the school building.

REFERENCES

Burton-Pye D., 2013 *Heritage Assessment Statement, Former Ravenstone School, Church Lane, Ravenstone, Leicestershire*, Planning Services for the Historic Environment, Staffordshire

Ordnance Survey 1883 *First Edition 1:2500 map*, Leicestershire sheet XXIII.3

Rann C., (forthcoming) Church Lane Ravenstone, Archaeological Strip, map and sample excavations, Archaeology Warwickshire, Warwick

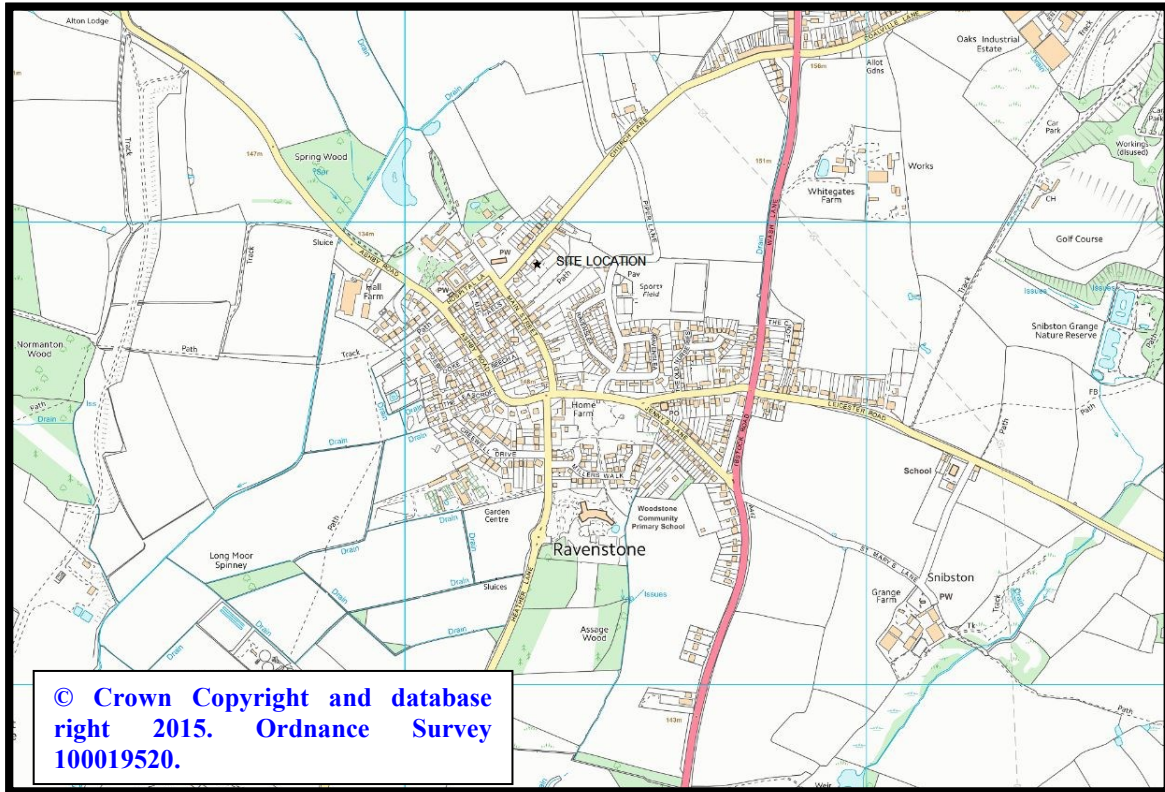


Fig 1: Site location

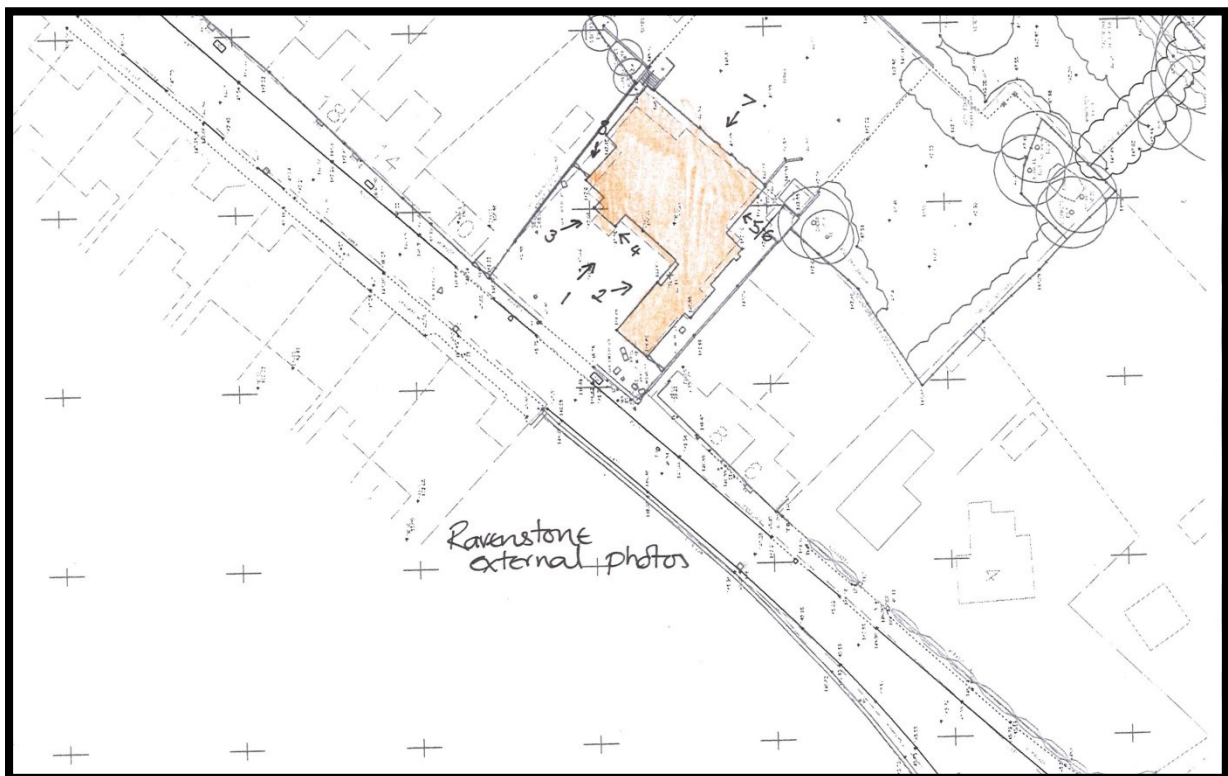


Fig 2: Direction of External photographs

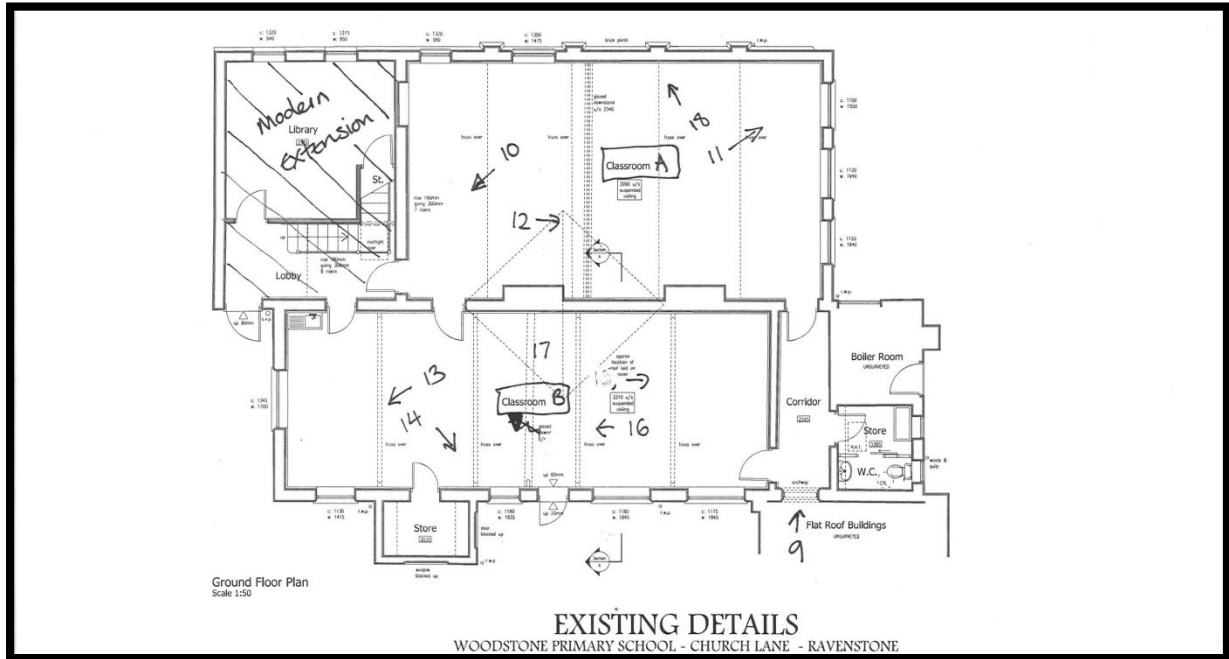


Fig 3: Direction of Internal photographs