

# Land off Fairway Littleworth Stafford

## ARCHAEOLOGICAL EVALUATION



EXPERTISE WHERE YOU NEED IT

Archaeology Warwickshire Report No 19103

AUGUST 2019



*Working for  
Warwickshire*

**Project:** Evaluation at Land off Fairway, Littleworth  
**Commissioned by:** RPS  
**Site Code:** SSL19  
**Planning Reference:** 18/28423  
**Planning Authority:** Stafford Borough Council  
**National Grid Reference:** SJ 936 228  
**Project Manager:** Tim Haines ACIfA  
**Fieldwork:** Bryn Gethin BA, Robert Jones PCIfA, Samuel Hirst MRes  
**Author:** Samuel Hirst MRes  
**Illustrations:** Candy Stevens (Fig 2)  
**Checked by:** Tim Haines ACIfA  
**Approved by:** Caroline Rann MCIfA  
**Date:** August 2019  
**Report reference:** Hirst, S, 2019 *St Leonards Fairway, Littleworth, Stafford: Archaeological Evaluation*, Archaeology Warwickshire Report 19103

Please note that this document has been prepared for the commissioning client or agent for a specific purpose and is time limited. It should not be relied upon by any other party for any other purpose at any other time.

**Please address enquiries to:** **Stuart C Palmer MCIfA**



**Principal Archaeologist & Business Manager**

**Archaeology Warwickshire**

**UNIT 9**

**Montague Road**

**Warwick**

**CV34 5LW**

**01926 412278**

**01926 412280**

**[stuartpalmer@warwickshire.gov.uk](mailto:stuartpalmer@warwickshire.gov.uk)**

**[www.warwickshire.gov.uk/archaeology](http://www.warwickshire.gov.uk/archaeology)**

## CONTENTS

	Summary	1
1	Introduction	2
2	Site Location	3
3	Archaeological Background	4
4	Aims and Methods	5
5	Results	6
6	Conclusions	7
	Acknowledgements	8
	References	9

## PHOTOGRAPHS

1	Trench 1, looking south-west	10
2	Trench 2, looking south-west	10
3	Trench 3, looking north-east, with service trench 303 in foreground	11
4	Trench 4 looking north-east	11
5	Trench 5, looking west	12

## APPENDICES

A	List of Contexts	14
B	Oasis Form	

## FIGURES

1	Site Location	13
2	Location of excavated trenches	13

## SUMMARY

*An archaeological evaluation was undertaken on land off Fairway, Littleworth on behalf of RPS, The evaluation comprised five trial trenches 2.5m wide totalling 172m in length. Geological natural sand and gravel was exposed in all trenches. No significant archaeological deposits or finds were recorded.*

*Trenches 1, 3 and 4 all contained modern disturbances in the form of a pipe, drain and service trench cuts.*

# 1 INTRODUCTION

- 1.1 Outline planning permission has been granted for re-development on land off Fairway, Littleworth, (Planning Ref: 18/28423/OUT). It was a requirement of planning permission that a programme of trial trenching be undertaken prior to the development, in line with a Written Scheme of Investigation prepared by CgMs Consulting (Now RPS, Parker 2019) on behalf of the developer.
- 1.2 Archaeology Warwickshire were commissioned to undertake an archaeological evaluation in accordance with the WSI prepared by CgMs Consulting and approved by Staffordshire County Council. Fieldwork took place on the 5th August 2019. This report presents the results of that work.
- 1.3 From an anticipated four trenches, the scope was increased to five trenches to maintain the same coverage of trenching, as the site was restricted due to extensive storage of crushed demolition rubble.
- 1.4 All work was carried out in accordance with the Chartered Institute for Archaeologists Standard and guidance for field evaluation (2014). The archive consists of paper records only and will be offered to Staffordshire Potteries Museum for deposition. A copy of this report will be submitted to Oasis (Appendix B).

## **2 SITE LOCATION (from WSI)**

- 2.1 The site is located approximately 1 km to the south-east of Stafford town centre and comprises 23 hectares of land centred at National Grid Reference SJ 936 226. The site is bordered to the north and south by areas of designated Green Networks with residential dwellings beyond, to the east lies a further area of Green Network, whilst to the west lie a mix of residential and industrial development and areas of Protected Open Space.
  
- 2.2 The bedrock geology within the site consists of Mudstone and Halite-stone belonging to the Mercia Mudstone Group Formation. Superficial deposits are sand and gravel from the Devensian and Glaciofluvial Sheet Deposits.

### **3 ARCHAEOLOGICAL BACKGROUND**

- 3.1 The following archaeological background has been reproduced from work previously conducted by Archaeological Services (WYAS) at the site (Sales 2018a; 2018b), supplemented where relevant by the results of that work.
- 3.2 No designated heritage assets are recorded within the application area although an archaeological desk-based assessment suggests the potential for archaeological activity remains.
- 3.3 The site holds the potential for prehistoric activity due to the close vicinity of the river Sow although no evidence of activity dating to this period has been discovered to date (Atkins 2009). The presence of a crop mark located south of the site could be indicative of Iron Age occupation though this cropmark is currently undated.
- 3.4 Outside of limited pottery evidence found within the vicinity of the site, there does not seem to be evidence suggestive of any significant Roman activity. The same can be said of the site during both the medieval and post-medieval periods. This could be due to the low lying marshy ground that the site sits within (Atkins 2009).

## 4 AIMS AND METHODS

- 4.1 The main aim of the evaluation was to determine the presence of any significant archaeological remains in the area to be developed; to form an understanding of their value and their potential to shed light on the subsequent development of the area.
- 4.2 Secondary aims included placing the results in their wider local and regional contexts as appropriate.
- 4.3 The objectives were to locate, record and analyse archaeological materials and deposits and to disseminate the results in an appropriate format.
- 4.4 The area was evaluated by means of 172m of trial trenching distributed across five trenches, each measuring 2.5m in width.
- 4.5 Topsoil, former ploughsoils and demonstrably modern overburden were removed by an appropriate machine using a toothless bucket under direct archaeological supervision. Ground reduction was carried out in shallow spits until the uppermost archaeological horizon, or the geological natural was reached (whichever was observed first).



## 5 RESULTS

- 5.1 The geological natural across the site was reddish brown sand and gravel (102, 202, 302, 402 and 502). It was exposed at a depth of 0.48-1m below the current ground surface.
- 5.2 No significant archaeological features were encountered within the trenches. Where not disturbed by modern services, the geological natural was directly overlain by a simple sequence of reddish brown sandy loam subsoil overlain by dark greyish brown topsoil.
- 5.3 Within Trench 1, two modern stone filled drains (103 and 105) cut the topsoil (100). Trench 3 contained a modern service trench (303), whilst Trench 4 contained cuts for two modern pipes (403 and 405).

## **6 CONCLUSIONS**

- 6.1 No significant archaeological deposits or finds were recorded on the site.
- 6.2 Trenches 1, 3 and 4 all contained modern disturbance, taking the form of drains, pipe trenches and a service trench.
- 6.3 Modern disturbance encountered across the site is probably associated with the former factory which has since been demolished.

## ACKNOWLEDGEMENTS

Archaeology Warwickshire would like to thank Susana Parker of RPS for commissioning the work and Debbie Taylor adviser to Stafford Borough Council for representing the planning authority.

## REFERENCES

Atkins, 2009, *Land at the Fairway, Stafford: An Archaeological Desk-Based Assessment*, Waterman (unpubl.).

Parker, S, 2019 Written Scheme of Investigation – 18/28423/OUT Enabling Works: Land off Fairway, Littleworth, Stafford, CgMs.

Sales, A, 2018a, *Land off Fairway, Littleworth, Stafford: Archaeological Watching Brief*, Archaeological Services WYAS.

Sales, A, 2018b, *Land off Fairway, Littleworth, Stafford: Archaeological Watching Brief*, Archaeological Services WYAS.



1: Trench 1, looking south-west



2: Trench 2, looking west south-west



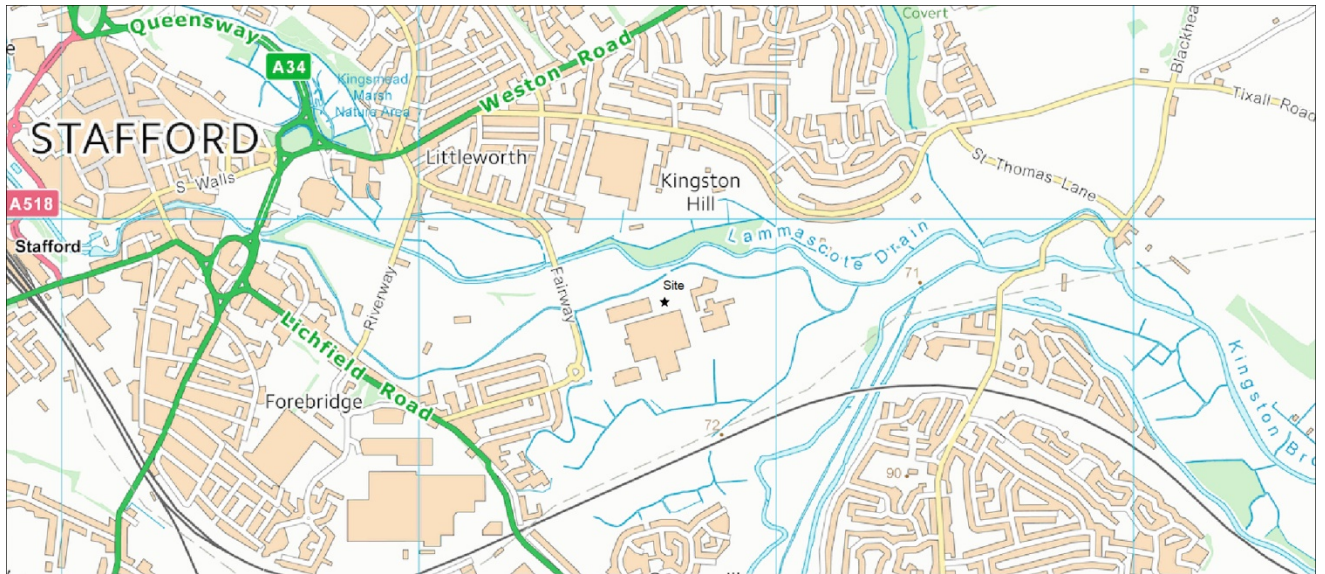
3: Trench 3, looking north-east, with service trench 303 in foreground



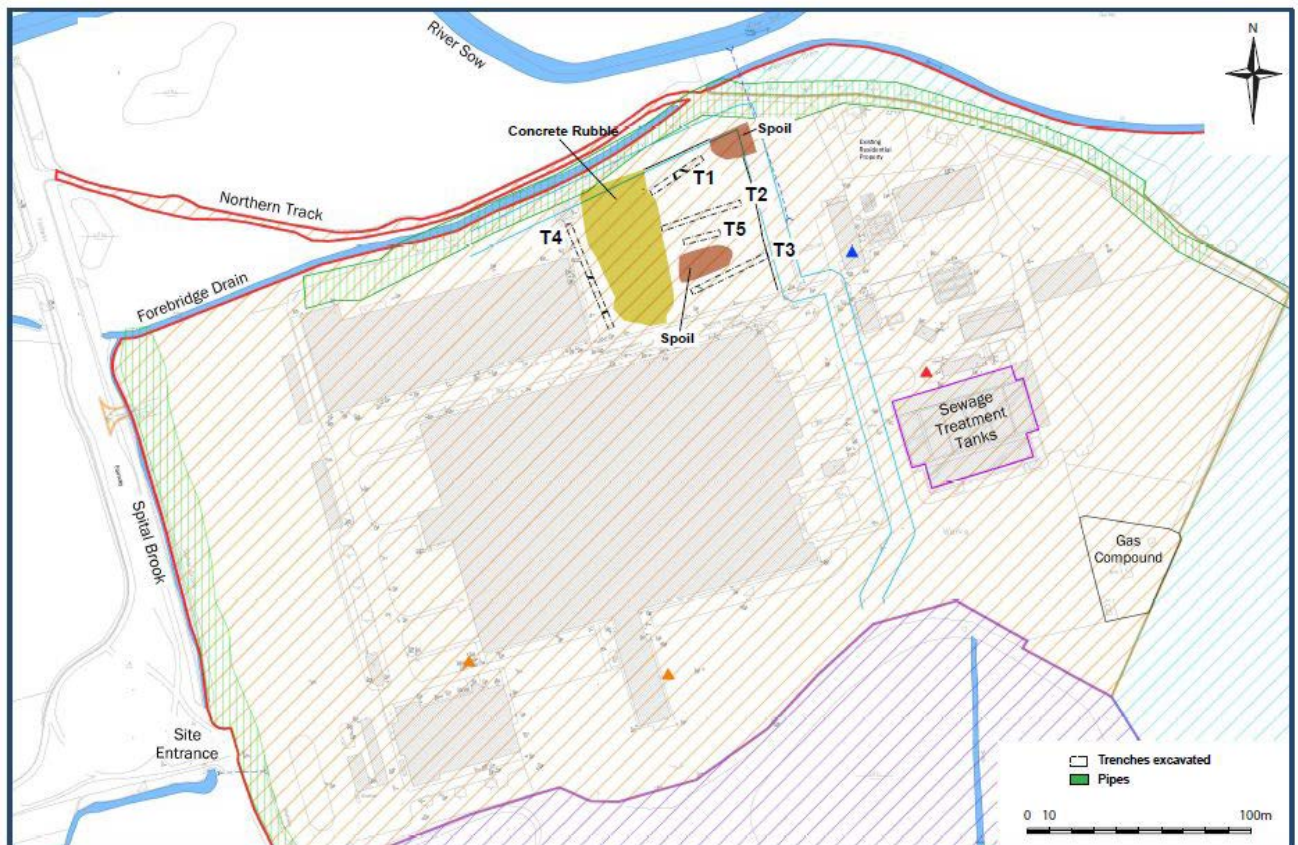
4: Trench 4, looking north-east



5: Trench 5, looking west



1: Site location Contains OS data © Crown copyright and database right (2019)



2: Location of trenches



## APPENDICES

### A List of contexts

<i>Trench</i>	<i>Context</i>	<i>Description</i>	<i>Length (m)</i>	<i>Width (m)</i>	<i>Thickness (m)</i>	<i>Comment</i>
1	100	Dark greyish brown sandy loam			0.8	Topsoil
1	101	Reddish brown sandy loam			0.30	Subsoil
1	102	Mix of sand and sand and gravel				Geological natural
1	103	Stone drain cut	>2.5	0.7		Drain, unexcavated
1	104	Loose sandstone	>2.5	0.7		Fill of stone drain (103), unexcavated
1	105	Drain cut	>2.5	0.33		Drain, unexcavated
1	106	Loose small to medium pebbles	>2.5	0.33		Fill of drain (105), unexcavated
2	200	Greyish brown silty sand			0.44	Topsoil
2	201	Reddish brown silty sand			0.2	Subsoil
2	202	Orangey brown sand and gravel				Geological natural
3	300	Dark greyish brown sandy silt			0.38	Topsoil
3	301	Dark reddish brown sandy loam			0.28	Subsoil
3	302	Reddish brown sand and gravel				Geological natural
3	303	Service trench cut	>2.5	0.3		Service trench, unexcavated
3	304	Red sand	>2.5	0.3		Fill of service trench (303), unexcavated
4	400	Brown sandy loam			0.3	Topsoil

4	401	Reddish brown sandy loam			0.18	Subsoil
4	402	Reddish brown sand and gravel				Geological natural
4	403	Pipe trench cut	>2.5	0.5		Modern pipe trench, unexcavated
4	404	Fill of modern pipe trench	>2.5	0.5		Fill of modern pipe trench (403), unexcavated
4	405	Pipe trench cut	>2.5	0.7		Modern pipe trench, unexcavated
4	406	Fill of pipe trench, contains a 400mm diameter cast iron pipe	>2.5	0.7		Fill of modern pipe trench (405), unexcavated
5	500	Greyish brown sandy silt			0.5	Topsoil
5	501	Reddish brown silty sand			0.16	Subsoil
5	502	Red sand and gravel with brown mottling				Geological natural

# OASIS DATA COLLECTION FORM: England

[List of Projects](#) | [Manage Projects](#) | [Search Projects](#) | [New project](#) | [Change your details](#) | [HER coverage](#) | [Change country](#) | [Log out](#)

## Printable version

**OASIS ID: archaeol27-365202**

### Project details

Project name	Land off Fairway, Littleworth, Stafford
Short description of the project	An archaeological evaluation, comprising five trial trenches covering a combined area of 172m in length, was carried out on behalf of CgMs Consulting. Geological natural of sand and gravel was exposed in all trenches but no significant archaeological deposits or finds were recorded. Trenches 1, 3 and 4 all contained modern disturbances in the form of pipe, drain and service trench cuts.
Project dates	Start: 05-08-2019 End: 05-08-2019
Previous/future work	Not known / Not known
Any associated project reference codes	SSL19 - Sitecode
Type of project	Field evaluation
Current Land use	Industry and Commerce 1 - Industrial
Monument type	DRAIN X2 Modern
Monument type	PIPE TRENCH X2 Modern
Monument type	SERVICE TRENCH Modern
Significant Finds	NONE None
Methods & techniques	""Targeted Trenches""
Development type	Rural residential
Prompt	Planning condition
Position in the planning process	After full determination (eg. As a condition)

### Project location

Country	England
Site location	STAFFORDSHIRE STAFFORD STAFFORD Land off Fairway, Littleworth, Stafford
Postcode	ST17 4LX
Study area	0 Square metres
Site coordinates	SJ 936 226 52.800588555862 -2.094937649033 52 48 02 N 002 05 41 W Point

### Project creators

Name of Organisation	Archaeology Warwickshire
----------------------	--------------------------

Project brief originator	Local Planning Authority (with/without advice from County/District Archaeologist)
Project design originator	CgMs Consulting
Project director/manager	Tim Haines
Project supervisor	Bryn Gethin
Type of sponsor/funding body	Developer

### Project archives

Physical Archive Exists?	No
Digital Archive recipient	OASIS
Digital Archive ID	archaeol27-365202
Digital Contents	"none"
Digital Media available	"Images raster / digital photography", "Text"
Paper Archive Exists?	No

### Project bibliography 1

Publication type	Grey literature (unpublished document/manuscript)
Title	Land off Fairway, Littleworth, Stafford
Author(s)/Editor(s)	Hirst, S.
Other bibliographic details	Archaeology Warwickshire Report No 19103
Date	2019
Issuer or publisher	Archaeology Warwickshire
Place of issue or publication	Warwick
Description	A4 comb bound report, full colour
Entered by	Samuel Hirst (samuelhirst@warwickshire.gov.uk)
Entered on	29 August 2019

## OASIS:

Please e-mail [Historic England](mailto:Historic England) for OASIS help and advice

© ADS 1996-2012 Created by [Jo Gilham and Jen Mitcham](#), email Last modified Wednesday 9 May 2012

Cite only: <http://www.oasis.ac.uk/form/print.cfm> for this page

