

**DENHOLM SEAFOODS LTD
CASTLE STREET, PETERHEAD
ABERDEENSHIRE**



- Watching Brief -

Carried out 18th October 2011

by

Murray Archaeological Services Ltd



Report No: MAS 2011-33

by

J C Murray

H K Murray BA, PhD, MIFA, FSA Scot

J C Murray BA, MIFA, FSA Scot, FMA

Hill of Belnagoak, Methlick, Ellon, Aberdeenshire AB41 7JN

Telephone: (01651) 806394 e-mail: cmurray@btinternet.com

DENHOLM SEAFOODS LTD
CASTLE STREET, PETERHEAD
ABERDEENSHIRE
- Watching Brief -

J C Murray

1. Introduction

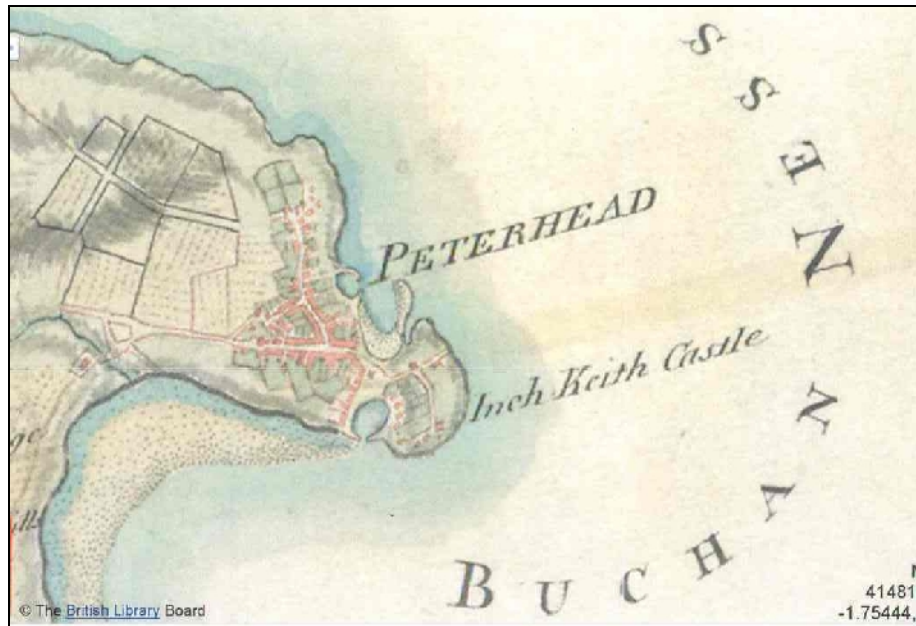
- 1.1** An application for planning permission (Application No.APP/2010/2547) by Denholm Seafoods Ltd to erect a new cold store at their premises at Castle Street, Peterhead, Aberdeenshire was subject to a planning condition (Condition 3) requiring an archaeological watching brief to be carried out during any ground disturbance prior to building.
- 1.2** The Condition is applied in the context of Scottish Planning Policy (SPP), Scottish Historic Environment Policy (SHEP) and Planning Advice Note (PAN 2/2011, 28) which states that Planning Authorities may impose planning conditions to ensure that arrangements are made for archaeological watching briefs during the approved works and to secure appropriate recording of such works and for the provision of analysis and publication of results.
- 1.3** Murray Archaeology Services Ltd was commissioned by Brian D Cheyne Ltd, on behalf of the developers to undertake the watching brief, the field element of which was carried out on 18th October 2010.

2 Methodology

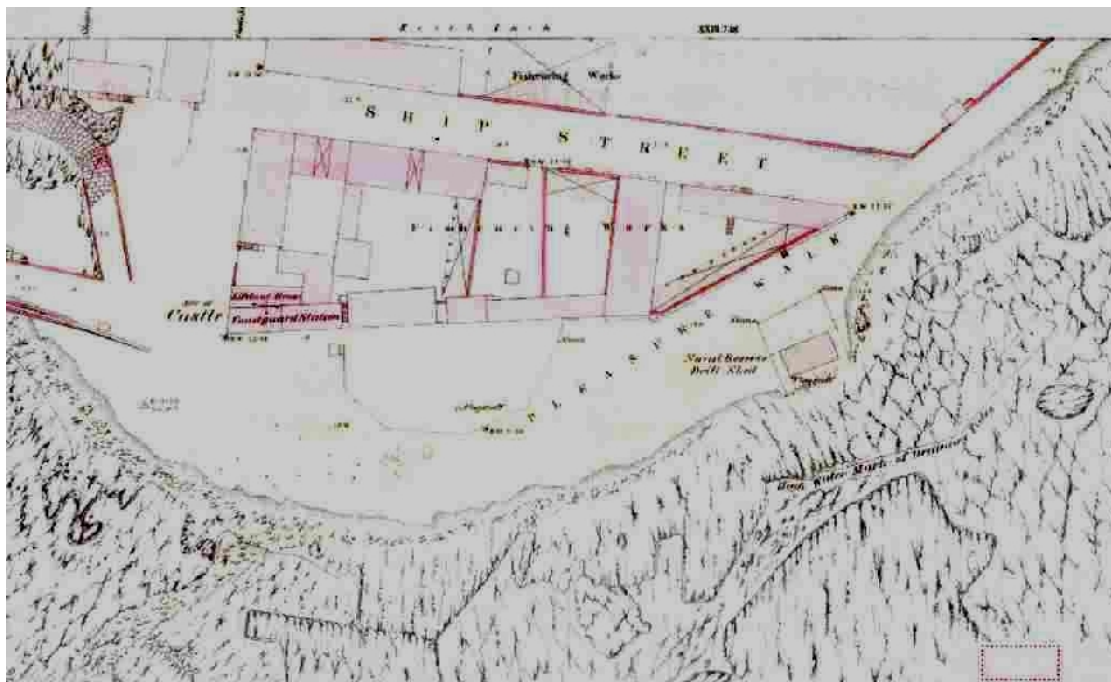
- 2.1** The soil strip was carried out by a full-slew mechanical digger using a toothless bucket. Where necessary further cleaning was done by hand.

3. The Site

- 3.1** The site is located (Illus.1) to the E of Castle Street and on the S side of Ship Street and Pleasure Walk on Keith Inch to the E of Peterhead fish market and harbours [NGR: NK 13900 45709 – centre of site]. Parish: Peterhead.



Illus. 2: Roy's military map 1747-1755 (www.NLS.uk) showing Keith Inch castle

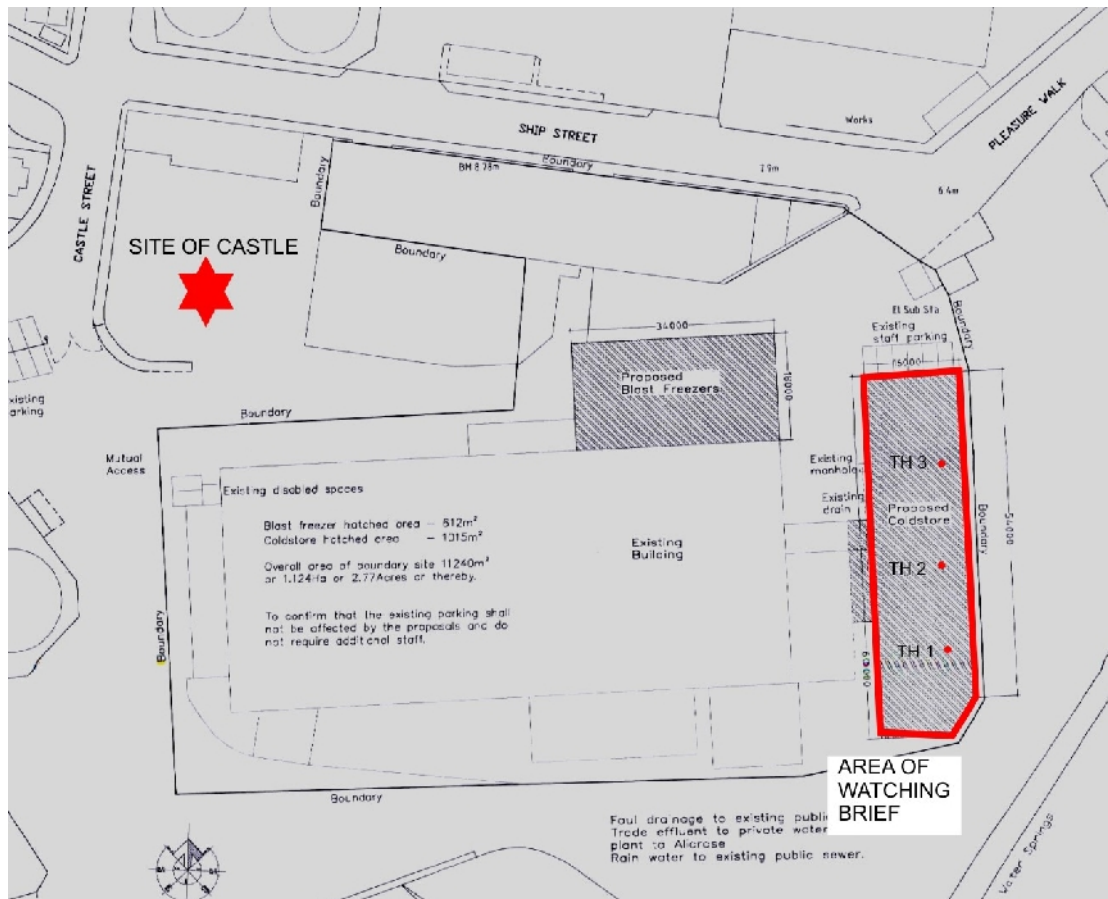


Illus. 3: 1st Edition Ordnance Survey, 1847-1895. Peterhead [1868] XXIII.7.23 (www.NLS.uk).

The site of the castle is shown on the left.

4. The Watching Brief

- 4.1 The area of the proposed cold store lies to the E of the site, running N-S along the site's eastern boundary. The area stripped measured 44m (N-S) by 15m (E-W). The construction of the cold store required a reduction in the general ground level by 380mm with the holes for the bases of the steel uprights being reduced by a further 600mm.



Illus. 4: Site plan with location of the new cold store and the position of the castle in red.

- 4.2 A covering layer, 180mm deep, of granite chips and dust overlay the entire site. Below this a further 200mm deep layer of crushed building rubble was removed.
- 4.3 It appears that the location of the new cold store had previously been the site of the offices of ASCO in Peterhead, but demolished in recent years. As part of the demolition, the building material was crushed and spread over the site.

Test holes for three of the steel uprights showed that the demolition rubble extended down for at least a further 900mm.

- 4.4** It was evident that all levels that may have related to the period of the castle had been removed by the construction of the previous building. As this was the case, the watching brief was abandoned prior to the excavation of all the holes for the steel uprights.
- 4.5** No archaeological features or finds were evident during the ground work excavations.



Illus. 5: Surface reduction along NW side of site



Illus. 6: Test Hole 1



Illus. 7: Test Hole 3 with concrete foundation at base

Photographs supplied to Aberdeenshire SMR on CD

Photographic catalogue	
Digital frame no	Content (Survey feature numbers)
1-5	General views of site, looking N and NE
6-12	Details of Test Holes 1 and 2 for steel uprights
13	View, looking S, at location of Test Holes
14-17	View, looking S, of top surface strip
17-20	View of Test Hole 3, showing concrete foundation at base
21	Test Holes 3, 2 and 1, looking S
22-25	Surface strip along NW side of site
26-28	General views of site, looking SE and S