

**BLACKHILLS QUARRY
COVE BAY
ABERDEEN**

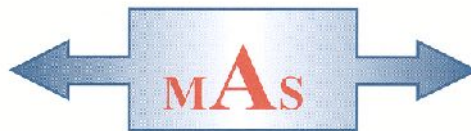


**- Archaeological Desktop and Walkover
Survey -**

Carried out 21st January 2013

by

Murray Archaeological Services Ltd



Report No: MAS 2013-03

by

H K Murray & J C Murray

H K Murray BA, PhD, MIFA, FSA Scot
J C Murray BA, MIFA, FSA Scot, FMA
Hill of Belnagoak, Methlick, Ellon, Aberdeenshire AB41 7JN
Telephone: (01651) 806394 e-mail: cmurray@btinternet.com

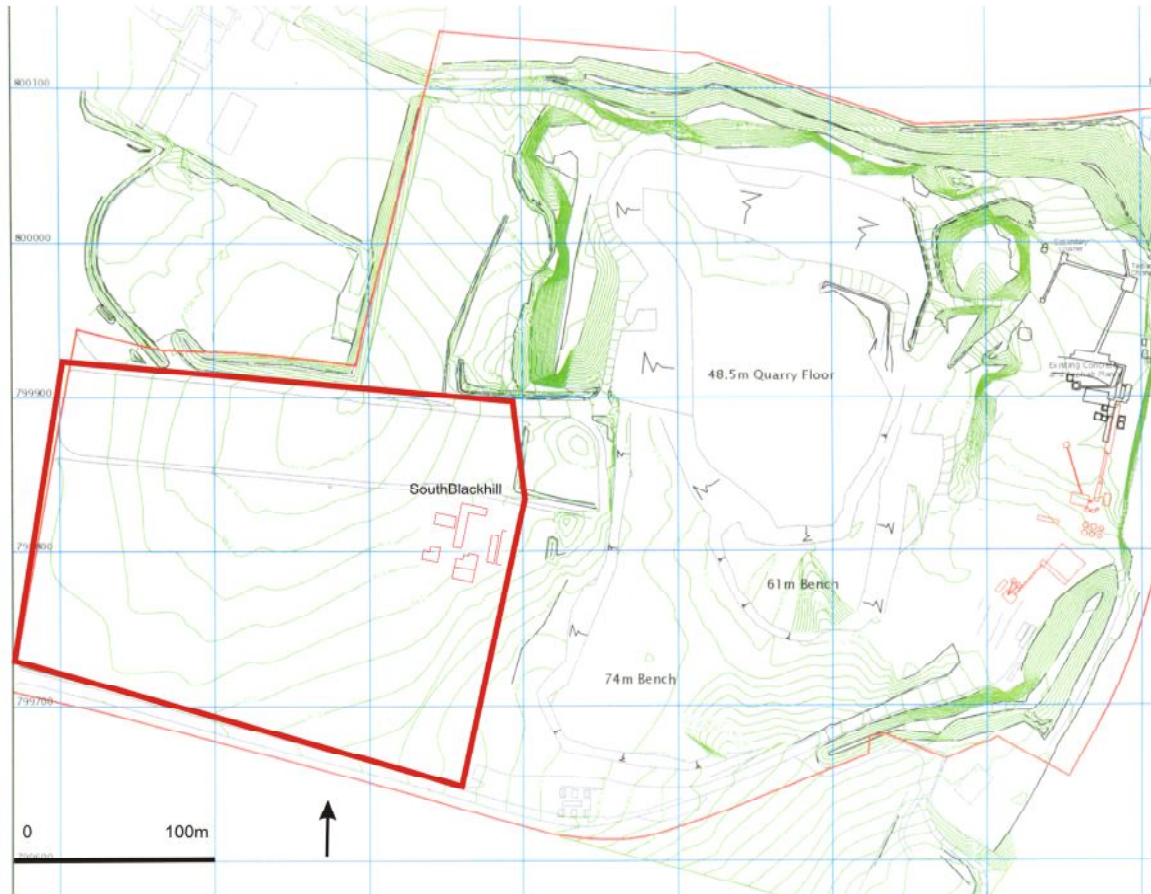
BLACKHILLS QUARRY COVE BAY ABERDEEN

-Archaeological Desktop and Walkover Survey-

H K Murray & J C Murray

1. Background
 - 1.1 As part of the pre-application process for an extension of the Blackhills Quarry, Cove Bay, Aberdeen, a desktop and walkover survey of two fields was required by City of Aberdeen Council Archaeology Services in the context of Scottish Planning Policy (SPP), Planning Advice Note: PAN 2/2011.
 - 1.2 The survey was requested in the context of the excavation of traces of Neolithic activity on the Gateway Site directly to the W of the present site. At a similar level to the proposed quarry extension excavation revealed a number of very plough truncated features associated with a small quantity of Early Neolithic pottery and lithics (Murray & Murray 2008). (NMRS Nos: NO99NW 95; NJ90SW209)
 - 1.3 Murray Archaeological Services Ltd was commissioned by Dalgleish Associates Ltd to undertake the survey on behalf of Leiths (Scotland) Ltd.
 - 1.4 The field element of the work was carried out on the 21st January 2013.
2. The Site
 - 2.1 The proposed extension of the Blackhills Quarry, lies S of Cove Bay and c. 1.5m E of the A90 Aberdeen to Dundee road. NGR: (centre of site).
NO 9430, 9980
Parish: Nigg
 - 2.2 The site comprised two fields comprising a total of c. 6.5 hectares, both in stubble at the time of the walkover. Due to recent weather the top surface of the soil was partly exposed allowing for a reasonable possibility of observing any surface artefacts.

- 2.3 The ground is fairly level apart from a slope down towards the SE corner of the S field.



Illus 1 Plan of quarry extension (red). Plan courtesy of Dalgleish Associates Ltd.

3. Desk top Survey

3.1 A background search was undertaken in the City of Aberdeen Sites and Monuments Records (SMR) and through Pastmap in the Sites and Monuments Records of the Royal Commission for Ancient and Historic Monuments in Scotland (RCAHMS).

3.2 The 25"/mile 1st and 2nd OS maps were checked.

3.3 The only site within the boundary of the proposed quarry extension was South Blackhill farmhouse NMRS No: NO99NW 91. NGR: NO9445 9981.

The farmhouse and steading are shown on:

1st OS 25"/mile Kincardine sheet IV.14 1865 (published 1868).

An L-plan steading with N and W ranges. Horsemill on N end of W wall. Small structure to SE. House S of steading.

2nd OS 25"/mile Kincardine sheet 007.11 1902 (published 1903).

The steading remains unchanged except for the removal of the horsemill but a new building – possibly the present house is shown to the SW of the steading. 3rd OS 25^{''}/mile Kincardine sheet 007.11 1923 (published 1925).

Small addition to the steading. Freestanding building NW of the house.

4. Methodology of walkover survey

- 4.1 The site was walked in a series of transects, with attention to the possibility of visible artefacts in the top of the exposed soil.
- 4.2 All mapping was done with a Magellan Mobile Mapper CX.

5. Results

5.1 *South Blackhill farm*

The farm and steading are almost fully demolished. Access to the site was not possible as there was live electric cabling and the site was fenced off.

5.2 *Dykes*

The only drystone dyke was on the N boundary of the N field; this is very ordinary farm dyke in a poor state of repair.

5.3 *Artefacts*

The only artefacts visible in the exposed soil were sherds of 19th /20th century china and glass derived from midden manuring.



Illus 2 Looking W across the site towards Moss-side where traces of Early Neolithic activity were excavated in 2008.

6 Impacts and Mitigations

Impacts There is no impact to any visible archaeological sites or features.

It is possible that traces of earlier activity may survive below the ploughsoil although on the neighbouring site at Moss-side, such traces had been severely truncated.

Mitigations None



Illus 3 South Blackhill farmhouse

References

Murray HK and Murray JC (2008) 'Moss-side, Cove, Aberdeen City / Aberdeenshire (Nigg / Banchory Devenick parishes), evaluation and excavation', *Discovery Excav Scot*, 9, 15-16

Appendices

Appendix 1: Catalogue of digital photographic record in archive City of Aberdeen SMR and NMRS

Digital frame number	Content
001	Site looking W

002	Looking SE
003	Soth Blackhill farm, looking E
004	Looking S
005-007	Looking W across the site towards the Moss-side site where some prehistoric traces were excavated in 2008
008	Looking SE
011	Looking SW
014	South Blackhill farmhouse
016-017	Looking W
018-019	Looking W across the site towards the Moss-side site where some prehistoric traces were excavated in 2008
020	Looking NE to existing quarry
022	Looking S