

**HOME FARM STEADING
PARK HOUSE
DRUMOAK
ABERDEENSHIRE**



Standing Building Survey

Carried out 9th May 2014

by

Murray Archaeological Services Ltd



Report No: MAS 2014-22

by

H K Murray and J C Murray

H K Murray BA, PhD, MIFA, FSA Scot

J C Murray BA, MIFA, FSA Scot, FMA

Hill of Belnagoak, Methlick, Ellon, Aberdeenshire AB41 7JN

Telephone: (01651) 806394 e-mail: cmurray@btinternet.com

**HOME FARM STEADING
PARK HOUSE
DRUMOAK
ABERDEENSHIRE**

- Standing Building Survey -

1. Background
 - 1.1 A standing building survey was required for the steading buildings at the Home Farm Steading, Park House, Drumoak, Aberdeenshire, prior to their conversion to form 9 residential units and a business unit.
 - 1.2 The archaeological condition (Condition 8) was applied in the context of planning legislation (PAN 2/2011, SPP, SHEP), which states that it is necessary for developers to arrange for archaeological work to take place prior to development, in appropriate circumstances. Planning Application Number: APP/2009/2907.
 - 1.3 A Level 1 Standing Building Survey was required which includes measured plans, a written account of the building's plan, form, function, age and development sequence in addition to a photographic survey.
 - 1.4 Murray Archaeological Services Ltd was commissioned to undertake the work by Gerry Robb, Architectural Design Services on behalf of their client, Mr W Foster. The site element of the survey was completed on the 9th May 2014.
2. Desk-top survey
 - 2.1 A search was carried out in the Sites and Monuments Record, Archaeology Service, Aberdeenshire Council and in the Sites and Monuments Records of

the Royal Commission for Ancient and Historic Monuments in Scotland (RCAHMS) through Canmore and Pastmap.

2.2 The 1st and 2nd edition Ordnance Survey maps were consulted.

2.3 Plans and elevations were kindly supplied by Gerry Robb, Architectural Design Services and these have been annotated as necessary.

3. The Site

3.1 The site lies c. 1km SW of Drumoak, to the S of the A93 on a private farm road. It is c. 0.5km from Park House and was the Home Farm steading for the property. It lies within a designed landscape relating to Park House, which was built in 1822 by Archibald Simpson for William Moir of Aberdeen (Geddes,2001, 88).

Parish: Drumoak

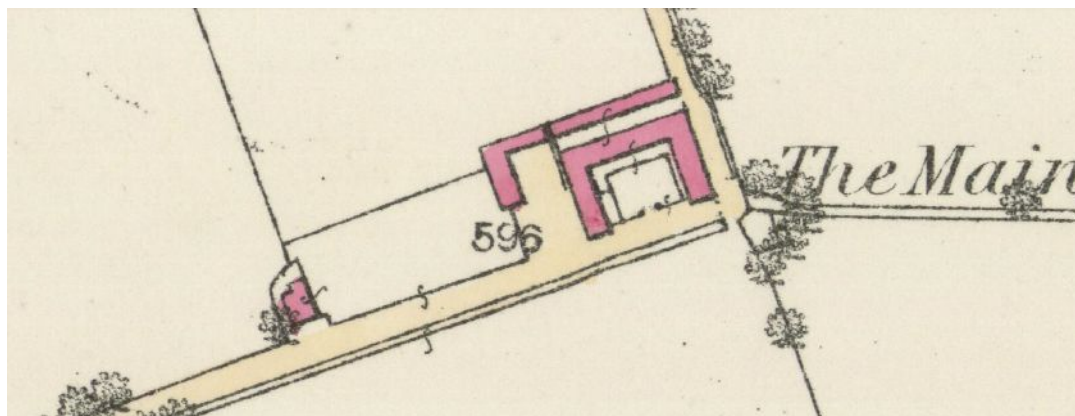
NGR NO 7837 9802

RCAHMS No: NO79NE 44.07

Aberdeenshire SMR: NO79NE 0049 (Park House)

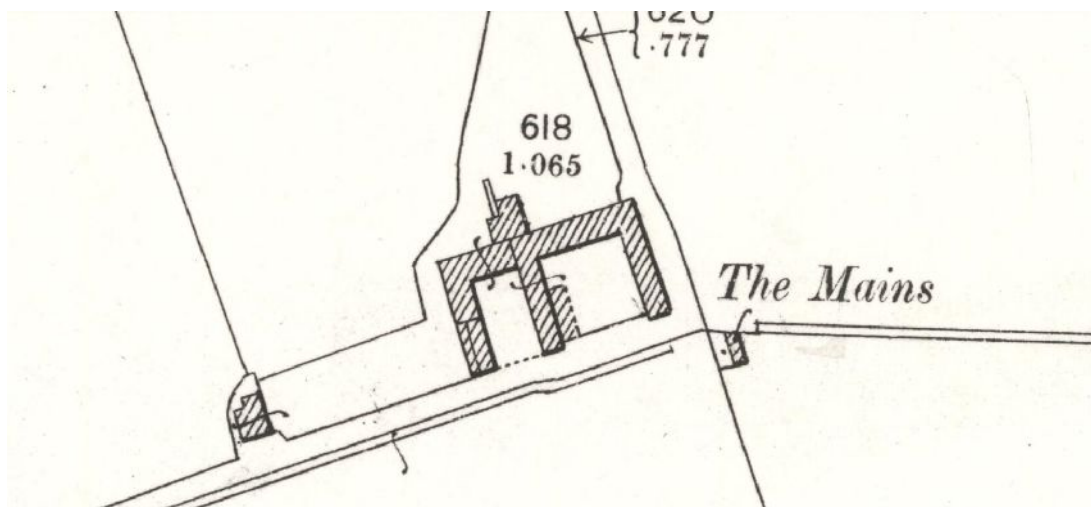
4. Documentary evidence

4.1 The 1st edition Ordnance Survey 25” map, surveyed in 1865 (published 1869. Sheet lxxxv.15 (Drumoak) shows the East Court on its present plan. A mill pond lies to the NNE with the mill lade shown running to the NW corner of the East Court. A long narrow L-shaped structure lies to the N of the East Court.



Illus 1 Detail of the 1st edition Ordnance Survey 25" map, surveyed in 1865 (published 1869. Sheet lxxxv.15 (Drumoak) www.nls.ac.uk

- 4.4 By the 2nd edition 25"/mile Ordnance Survey of 1899 (published 1900. Aberdeenshire Sheet 085.13) the L-shaped structure to the N had been removed and the West Court built. A mill building abutted the N end of the W range of the East Court on the line of the existing lade.



Illus 2 Detail of the 2nd edition 25"/mile Ordnance Survey of 1899 (published 1900. Aberdeenshire Sheet 085.13) www.nls.ac.uk

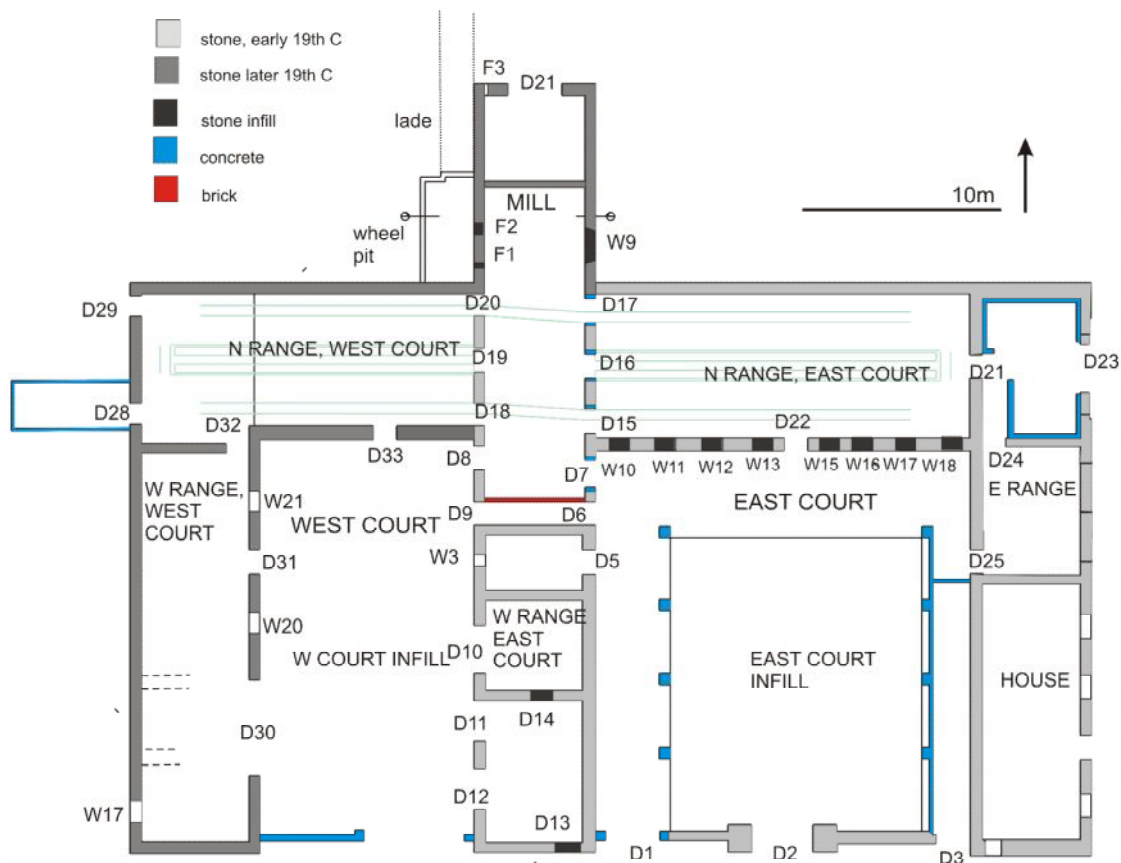
5 Methodology

- 5.1 The ground plans have been annotated to show details and to indicate differences in the building materials which may help in understanding the development and history of the building.
- 5.2 The areas recorded were photographed. The full set of photographs will be supplied for the archive and an annotated plan in the present report (Illus 27) indicates the position of each.

6 The Steading

The buildings as shown in 1899 are substantially intact, with a quadrangular East Court, an L-shaped West Court and a mill abutting the N side of the complex. However, at the time of the survey some roofs were in a state of collapse and some had been removed. The interior had been modernised in some areas, with concrete render obscuring any possible wall blockings. Both courts had been infilled and roofed in the later 20th century.

Loft areas could not be accessed and the W Range of the West Court was not entered as it was housing a bull at the time of survey. The house in the E range of the East Court was occupied at the time of survey so was only photographed externally.



Illus 3 Main plan. Annotated from drawing courtesy of Gerry Robb, Architectural Design Services. (Larger scale version of plan in Illus 22)

6.1 East Court

The East Court comprises N, E and W ranges set on three sides of what would have been an open court with a wall and decorative gateway on the S side, which would have been the side visible from the roadway leading between the Home Farm and Park House. A raggle along the E wall of the West range of this court shows the former presence of a lean-to building, possibly that shown on the 1899 OS map (Illus 2). During the 20th century, as was common with many of the traditional steadings, the open court was infilled as a roofed building. The infill roof has since been removed and only the concrete foundations (Illus 3: shown blue) remain. At this time, the S wall was raised, with concrete blockwork above the original stone entry wall (Illus 4).



Illus 4 S wall of East Court showing the original 19th-century stone wall with concrete above from the 20th century infill.

Dimensions The whole court is c 155m E/W x 145m N/S externally. The E and W ranges are c 30m wide and the N range is c 40m wide.

E RANGE

Present/recent use

The S part of the E range comprises a 1 ½ - storey farmhouse. The N half had been originally used for livestock as indicated by the vents in the E wall and in the roof. This is divided into two areas, the S area, next to the house, retains

old wooden trevices for 3 double tied-cow stalls. The N area had been lined-out with concrete and apparently used as a workshop.

The chimney at the N end of this range is a 'false' chimney with no flue, presumably built to balance the E facade. The slit vent below it indicates this area was always used for livestock.

Walls Harled stone. In the NW corner between the N and E ranges, the stonework is exposed and shows the E range to have been built using larger, more squared stones.



Illus 5 Stonework in NW corner between N and E ranges of East Court

Roof Slate on house. No roof surviving on N end of range but appears to have been slate.

Chimneys House: Granite rectangular stacks with flat topped table. Ceramic pots. N end gable: false chimney (Illus 6).



Illus 6 False chimney in N end gable E range, East Court.

Skewputts Granite skews with rolled skewputts at both gables.

Doors and windows

House: The house was not surveyed in detail as it was occupied. There were no openings in the N or W walls. A single large window in the S wall is clearly a later replacement or addition. In the E wall, facing the roadway there were three sash windows on the ground floor. The door has a glazed light in the top panel and a glazed light above the door. The outer two dormers on the attic floor have dressed granite rybats and triangular pediments; these are likely to be original. The central dormer, with two sliding windows in a wooden frame appears secondary, probably inserted when an internal bathroom was added.



Illus 7 The house, looking NW

Steading:

W wall

D21 W:1.2m H: 2m (to concrete) Granite lintel and rybats. Fragments of wooden door.

D25 W:1.22m Arched. Height to arch 2.40m. Stone arch and rybats. Wooden half-doors.

E wall

D23 W: 4.25m H:2.3m. Granite lintel and rybats. On outer (E) face of wall there are recesses for the sliding doors.

Small vents in upper wall for original livestock use (Illus 8).

N wall

Slit vent below false chimney.

Internal

D24 W:1.22m H:2.20m Wooden lintel (internal doorway)



Illus 8 Tied cow stalls with vents above, in central part of East Court, E range.

N RANGE

Present/recent use

Cattle. Tied stalls with metal trevises (removed), concrete feed pass and concrete slatted (removed) dung channel.

Walls Rubble stone. Lined out with concrete internally.

Roof Removed prior to survey

Doors and windows

N wall No openings.

S wall Central door (D22) opening into original court, flanked by four windows on each side (W10-W18), all blocked with stone.

D22 W:1.23m H:2.13m. Granite lintel and rybats. Splays out towards court.

W10-W18 W: 0.92m H: 1.00m Sills 0.55m above ground (to concrete). All with rubble stone arched openings. All stone-blocked.



Illus 9 Looking N across East Court to S wall of N Range, some of blocked windows visible.



Illus 10 detail of blocked window in S wall of N Range, East Court

W wall

D15 - D17 W:1.22m H: 2m. Concrete and brick lintel and sides. Part of restructuring for feed pass etc.

W RANGE

When the first part of the steading was built in the early 19th century, the W facade of the W range of the East Court would have been visible to the roadway from Park House. It would have given a well balanced appearance with three cart bays at the S end, with a grain loft above. The N end has been considerably restructured when the whole of the N end of the steading complex was altered with concrete linings and tied cow stalls.

Present/recent use

Livestock and general storage.

Walls Squared stone blocks on W face of this range with granite detailing around cart bays.

Roof Slate.

Skewputts Rolled skewputts at S gable, matching those on house.

Doors and windows

S wall

D 4 Loft door. Loading bay for granary in loft. Not measured.

D13 Blocking visible on inside of wall only. W:1.25m H: 2.60m. Arched.

Stone blocked.

E wall

D5 W:1.23m H:2.10m Wooden door. No access to the room behind this door.

D6 W:1.22m H: 2.08m stone lintel. A brick wall between D6 and the secondary D7 has made the space between D6 and D9 into a narrow passage.

D7 W: 1.37m H:2.10m concrete sides and lintel. Appears to be modern break-through.

W wall

D8 W:1.23m H: 2.10m Stone lintel. Wooden half doors.

D9 W: 1.22m H: 2.10m

D10 – D12 Cart bay openings with shallow stone arch. W: 2.45m H: 2.2m.

D18-D20 W:1.22m H: 2m. Concrete and brick lintel and sides. Part of restructuring for feed pass etc.

W3 W: 0.61m H:0.40m Glazed swinging window.

W4-W8 Loft windows. Wooden slatted. Granite lintels and rybats.



Illus 11 W wall of W range of original East Court

Internal

D14 W: 1.25m H: 2.2m? Stone blocked doorway between cart bays D11 and D10.

6.2 *West Court*

The West Court was added to the original East Court. Subsequently the interior between the W range of the East Court and the West range of the West Court was infilled and roofed.

N RANGE

Present/recent use

Cattle. Tied stalls with metal trevises, concrete feed pass and concrete slatted (removed) dung channel. 10 double stalls (total 40 cattle in this wing and 40 cattle in N range of East Court.

Walls Stone, concrete lined internally

Roof Slate, mostly removed, timbers collapsing.



Illus 12 N range of West Court, looking W. Interior.

Doors and windows

S wall

D32 W: 1.17m H: 2.10m

D 33 W:1.20m H: 1.90m Wooden door.

W wall

D28 W:1.05m H:2.18m Concrete and bricks at sides. Restructured or secondary break- through. Corrugated iron shed outside this door.

D29 W:1.05m H:2.18m Concrete and bricks at sides. Restructured or secondary break- through.



Illus 13 W wall of W range of West Court from outside, looking N. Ranging rod indicates the probable position of the wall between the bothy with loft above at S end and the stalls with vents at N end.

W RANGE

Original use The S end of the W range was originally a bothy as there is a chimney with flue in the S gable and a fireplace could be seen in the inner face of the S wall (not measured as this area could not be entered). There also appeared to have been a blocked door in the W side of the S gable (not visible on outside because of harling). This end had had an upper floor or loft, with narrow loft windows (W18, W19. Illus 13, 24). Raggles on the inner face of the W wall indicated the position of the end wall of the bothy and the position of an internal wall. The N end of the range had originally been used for livestock as indicated by the line of vents at the top of the wall and the raggles of six stalls each corresponding to one of the vents.



Illus 14 Looking through D30 to S end of interior of West Court W Range. On wall to LHS blocked door and central fireplace visible. On far wall raggle of loft floor and of internal partition wall of bothy.

Present/recent use

Cattle, bull in range at time of visit.

Walls Stone, harled externally.

Roof Slate.

Skewputts Rolled skewputts match those of earlier East Court.

Chimney Granite rectangular stack with flat topped table.

Doors and windows

S wall

D27 Loft door. Not measured.

Internal fireplace at S end. Not measured. (Illus 14)

Possible blocked door. Not measured. (Illus 14)

E wall

D30 W: 4.8m. Knock- through to adapt bothy for livestock.

D31 W:1.23m H:2.3m

W20 W: 1.08m H: 1.83m Granite sill, rybat and lintel. Metal frame across.

W21 W: 1.08m H: 1.83m Granite sill, rybat and lintel. Metal frame across.

W wall

W17 W:1.06m H: 1.54m

W18- W19 Loft windows. Not measured. Wooden slats.
Stone cut vents.

INFILL BUILDING

Roof : Corrugated asbestos on wooden spans.

S wall of concrete blocks.

D 26 W: 5.10m



Illus 15 Infill of West Court, looking N

6.3 Mill

The mill block abutts the N end of the W range of the East Court. It is divided internally into two areas by a stone wall 1.85m high with an added 0.50m of concrete blockwork at the top, with a wooden floored loft open to door D21 in the N gable (Illus 19). There is no obvious access to the area below this loft.

The S area was open to the roof. The wheel pit is alongside the W wall and the blocked openings related to the wheel shaft are visible on the inside of this wall (Illus 20). On the opposite (E) wall there had been a large window giving light into the area.

Timber holes in the S end of the E wall are likely to have held a wooden stair up to the doorway in a wooden partition wall at the end of the loft which

extended over the length of the W range of the East Court (Illus 16). The loft was not accessible.



Illus 16 Looking S from mill at loft over W range of East Court

The wheel pit was not accessible due to debris and dense vegetation (Illus 17). The architect's notes indicate that it is 5m deep and has a granite retaining wall. The lade (Illus 18. W: 800mm) ran to the wheel pit from 6.7m the N, where the OS maps (Illus 1, 2) show the Mill pond. The outflow from the lade appears to run below the West Court and out to the W along a wide ditch along the S side of the roadway.

Externally the N gable of the mill has a pedimented false front and skewputts to match the rest of the complex (Illus 17).



Illus 17 Mill from the N showing false front at gable. Lade visible on RHS.



Illus 18 Mill lade and wheel pit from N

D21 W: 2.6m H: 2.6m

F1 Shaft hole for wheel shaft W:300mm H: 280mm heavy granite sill.
Blocked.

F2 W: 600mm H: 900mm. Heavy granite sill and lintel. Blocked with metal.

F3 W: 1.4m H: 1.25m with heavy granite lintels. Partly brick blocked.

F4 W: 300mm H: 400mm

Two small, blocked loft windows can be seen on the inside of the upper end of the N end of the W wall (Illus 20).

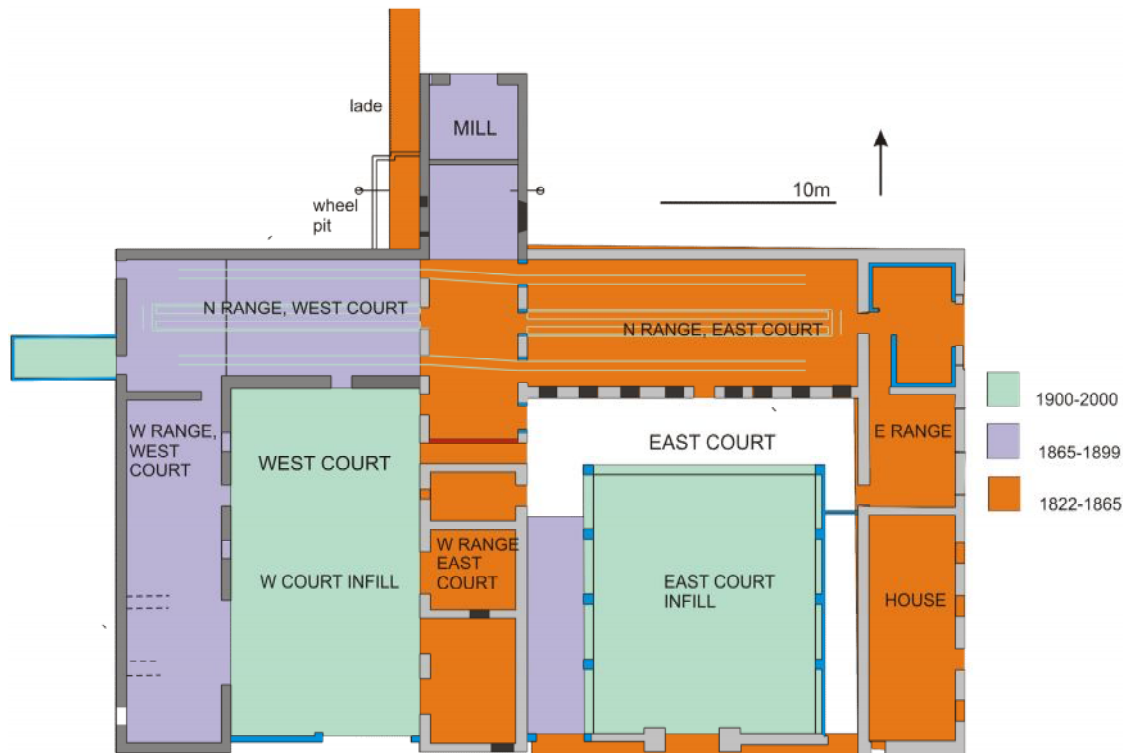


Illus 19 Interior of mill from below loft of East Court, W range (by D7)



Illus 20 Inside of mill showing inner face of W wall with blockings F1-F3

7 Discussion



Illus 21 Phasing of the buildings. Plan annotated from drawing courtesy of Gerry Robb, Architectural Design Services

Home Farm Park House is a fairly typical Aberdeenshire improvement steading (Glendinning and Wade Martins 2008, 119-120), probably dating from between *c.* 1822, when Park House itself was built, and 1865 when the East Court was depicted on the OS map.

There was a further considerable development in the later 19th century when the West Court and a new Mill building were built. This may reflect an increase in livestock made possible by the greater productivity of the land created by the 19th -century improvement in agricultural practices (Glendinning and Wade Martins 2008, 75).

Very significant restructuring and development of the N part of the steading took place in the mid-late 20th century.

What makes Home Farm of Park House distinctive are the features such as the decorative skewputts, the balancing of the E facade with a false chimney at the N end and the false pediment on the N face of the mill. These details are all indicative of the status of the 19th -century estate and the desire to make the steading suitably impressive. In its earliest form, the well balanced court with its central arched entry would have been quite elegant.

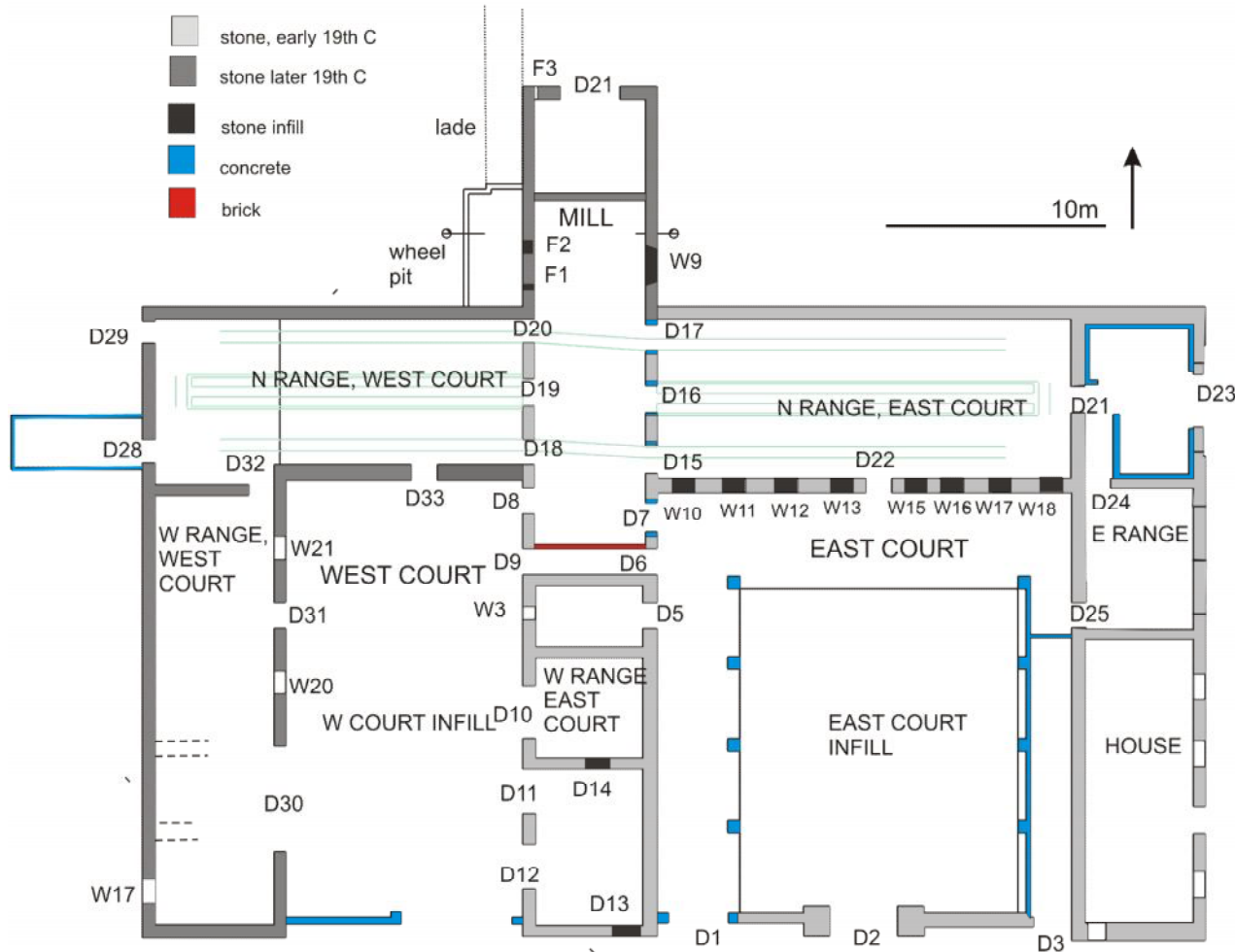
8. References

Geddes, J 2001 *Deeside and the Mearns: an illustrated architectural guide*. RIAS:
Rutland Press.

Glendinning, M and Wade Martins, S 2008 Buildings of the Land: Scotland's Farms
1750-2000 Edinburgh: RCAHMS.

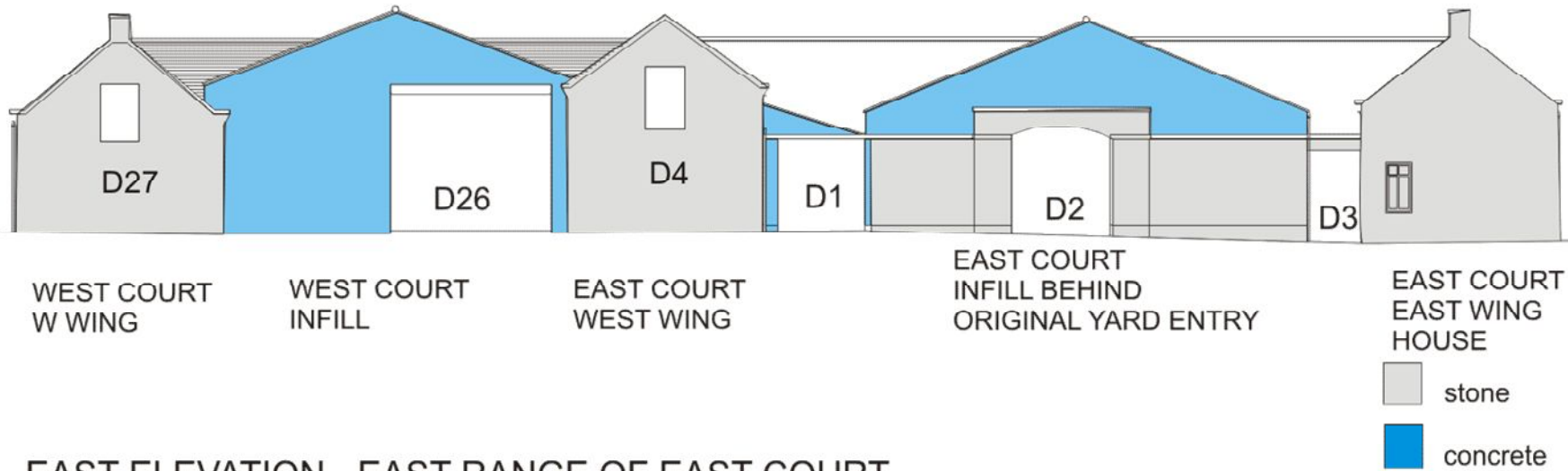
9 Archive

A full set of photographs with the photo location plan (Illus 27) will be supplied to the Aberdeenshire SMR in Aberdeen and to the NMRS.

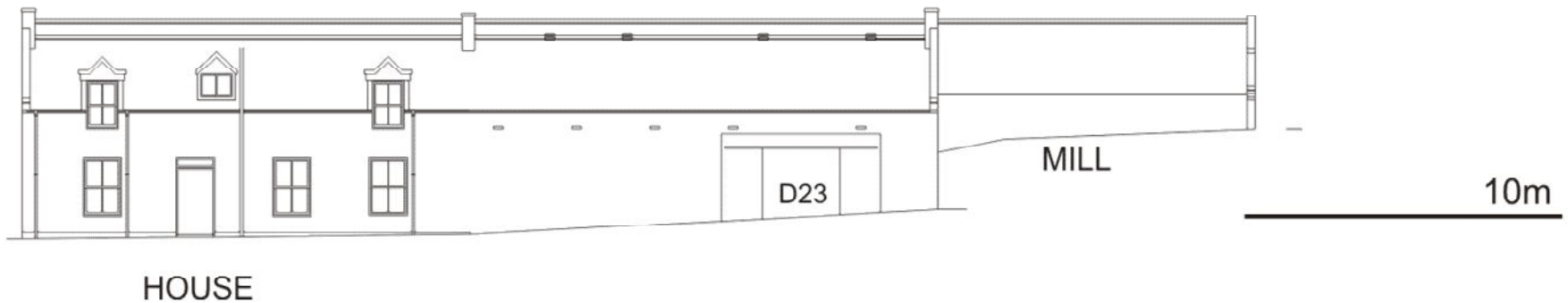


Illus 22 Main plan. Annotated from drawing courtesy of Gerry Robb, Architectural Design Services

SOUTH ELEVATION - MAIN FRONT FACADE

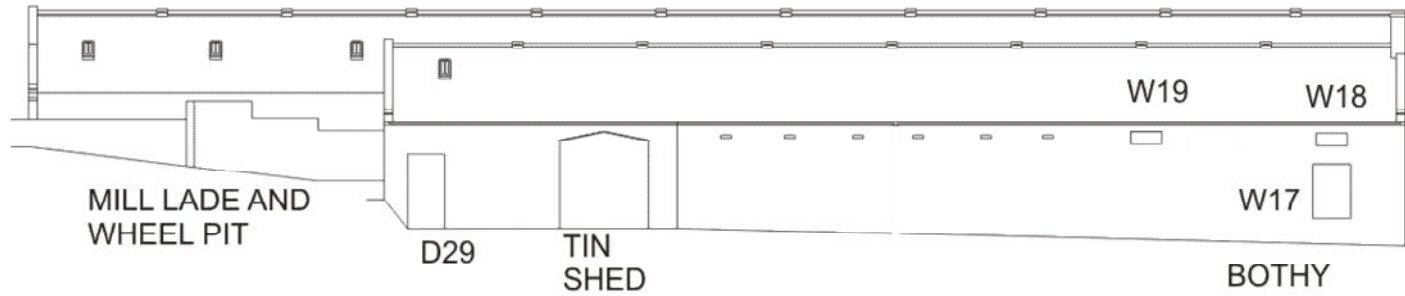


EAST ELEVATION - EAST RANGE OF EAST COURT

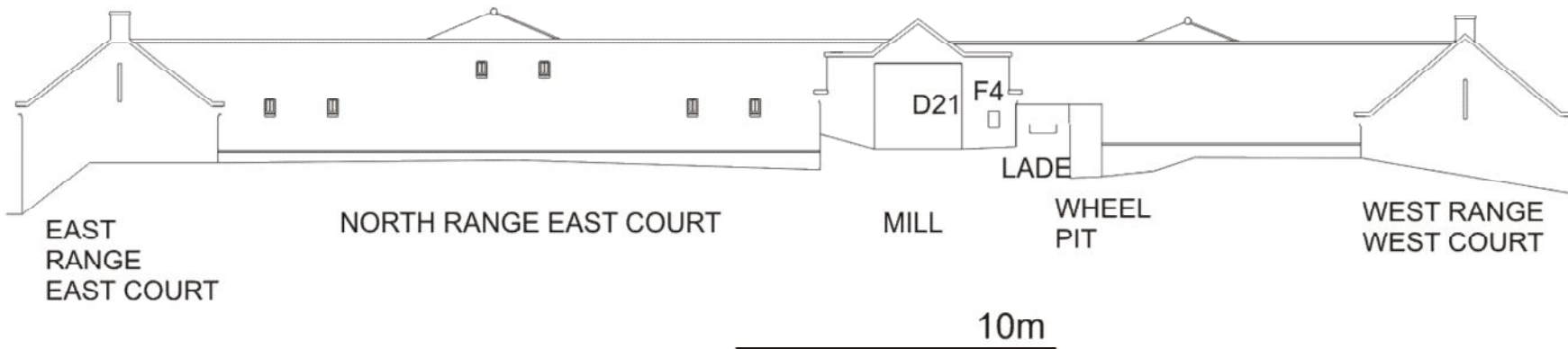


Illus 23 South and East elevations. Annotated from drawing courtesy of Gerry Robb, Architectural Design Services

WEST ELEVATION , WEST RANGE OF WEST COURT

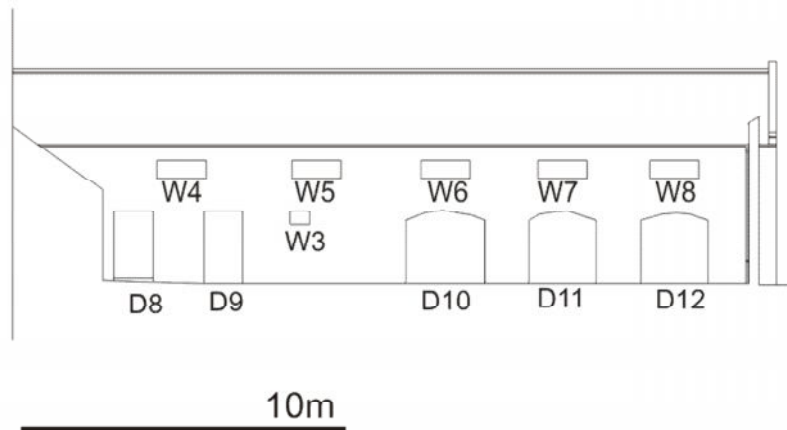


NORTH ELEVATION

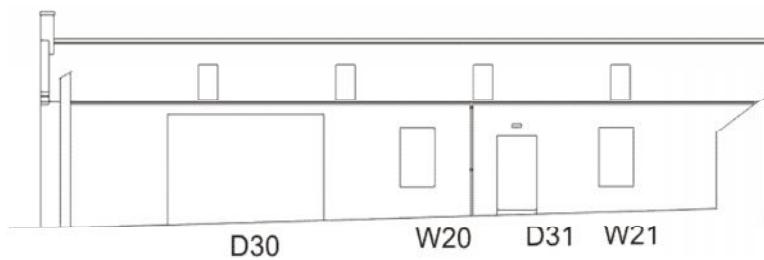


Illus 24 North and West elevations. Annotated from drawing courtesy of Gerry Robb, Architectural Design Services

WEST ELEVATION, WEST RANGE OF EAST COURT

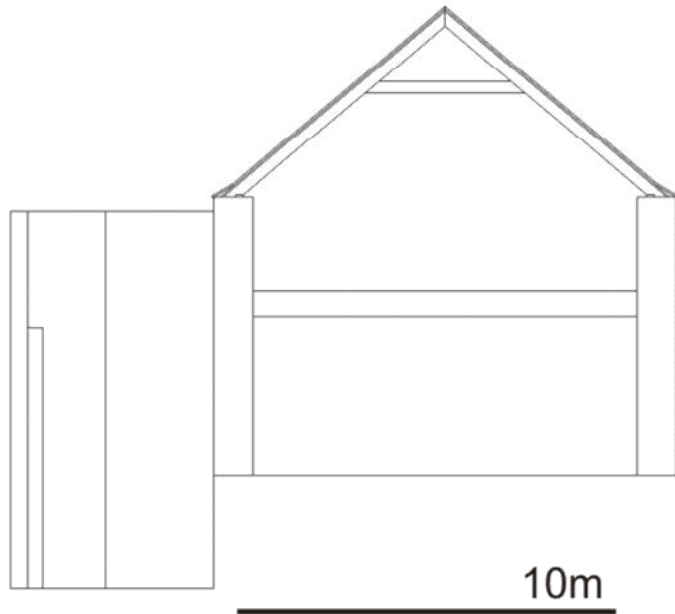


EAST ELEVATION, WEST RANGE WEST COURT

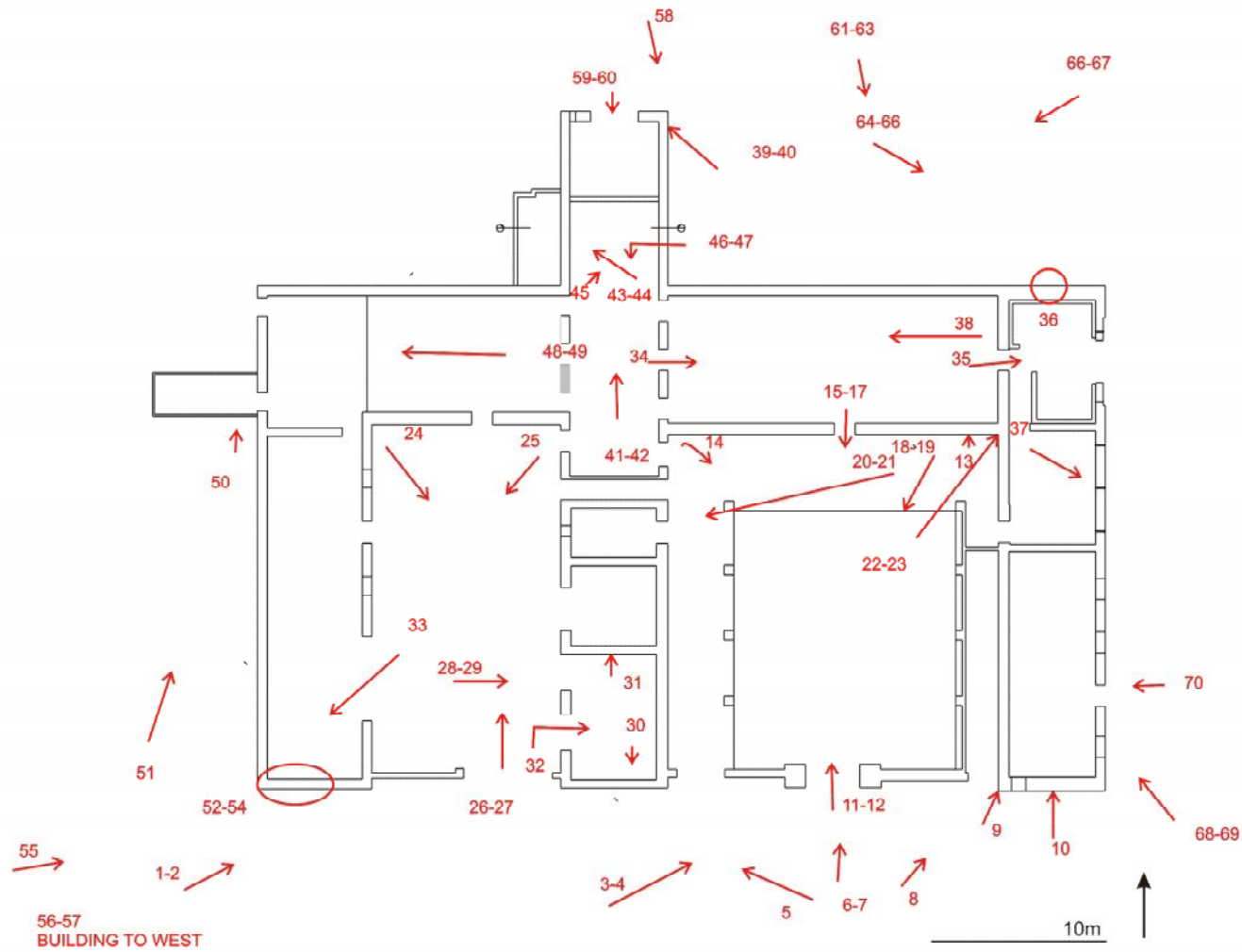


Illus 25 Internal elevations. Annotated from drawing courtesy of Gerry Robb, Architectural Design Services

SECTION OF MILL AND WHEEL PIT



Illus 26 Mill section. Drawing courtesy of Gerry Robb, Architectural Design Services



Illus 27 Photographic references. Plan annotated from drawing courtesy of Gerry Robb, Architectural Design Services