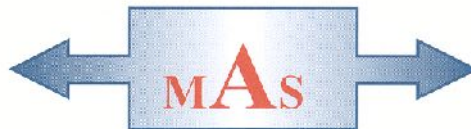


# BLACKHILLS QUARRY COVE ABERDEEN



**- Archaeological Evaluation -**  
Carried out 3<sup>rd</sup>- 4<sup>th</sup> February 2015 by  
**Murray Archaeological Services Ltd**



**Report No: MAS 2015-05**  
by  
**H K Murray & J C Murray**

H K Murray BA, PhD, MCIFA, FSA Scot  
J C Murray BA, MCIFA, FSA Scot, FMA  
Hill of Belnagoak, Methlick, Ellon, Aberdeenshire AB41 7JN  
Telephone: (01651) 806394 e-mail: cmurray@btinternet.com

# **BLACKHILLS QUARRY COVE ABERDEEN**

## **-Archaeological Evaluation-**

**H K Murray and J C Murray**

### **1. Background**

- 1.1 Prior to an extension of the Blackhills Quarry, Cove Bay, Aberdeen, an archaeological evaluation of two fields was required by City of Aberdeen Council Archaeology Services. The condition required that a 7% archaeological evaluation be carried out prior to the soil strip.
- 1.2 The Conditions were applied in the context of PAN (Planning Advise Note) 2/2011, SPP and SHEP.
- 1.3 Murray Archaeological Services Ltd was commissioned by Leiths (Scotland) Ltd to undertake the work, the field element which was undertaken on the 3<sup>rd</sup> and 4<sup>th</sup> February 2015.

### **2. Desktop Survey**

2.1 A desktop and walkover survey had been undertaken in January 2013 by Murray Archaeological Services Ltd (Murray & Murray 2013). The survey did not reveal any known features on the site and field walking produced no artefacts.

However, the evaluation was required in the context of the excavation of traces of Neolithic activity on the Gateway Site directly to the W of the present site. At a similar level to the proposed quarry extension excavation revealed a number of very plough truncated features associated with a small quantity of Early Neolithic pottery and lithics (Murray & Murray 2008). (NMRS Nos: NO99NW 95; NJ90SW209)



**Illus 1 Trench 1 looking W to the Gateway site**

### 3. The Site

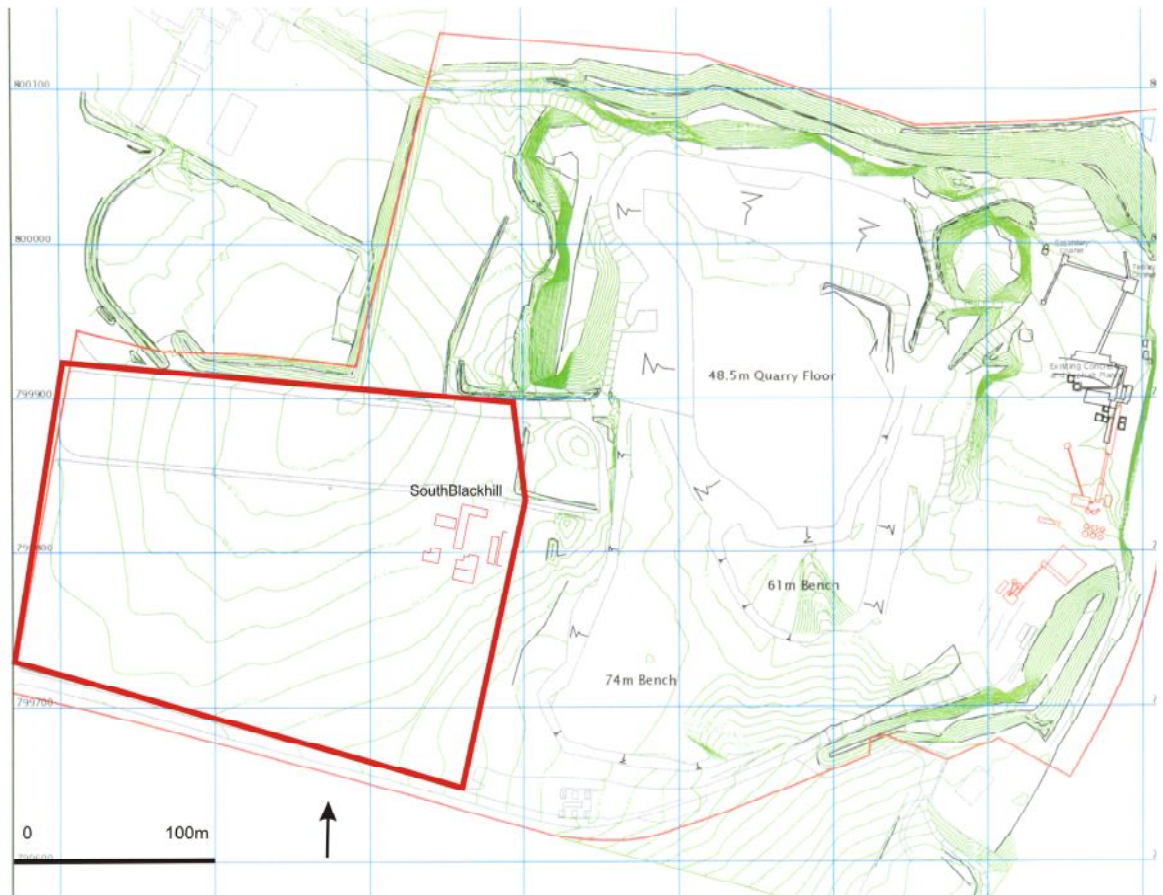
- 3.1 The proposed extension of the Blackhills Quarry, lies S of Cove Bay and c. 1.5m E of the A90 Aberdeen to Dundee road. NGR: (centre of site).

NO 9430, 9980

Parish: Nigg



**Illus 2 Trenches 1-4 looking NE**



**Illus 3 Location of the quarry extension. Plan courtesy of Dalgleish Associates Ltd. Ordnance Survey © Crown copyright. All rights reserved. Licence number 100049810**

- 3.2 The site was on high ground overlooking the sea, with a N/S ridge across the middle of the site, the land sloping down to the W.
- 3.3 At the time of the evaluation the field was in stubble. The full extent of the fields was 6.5 hectares but part of the N field was covered by a permanent bund.

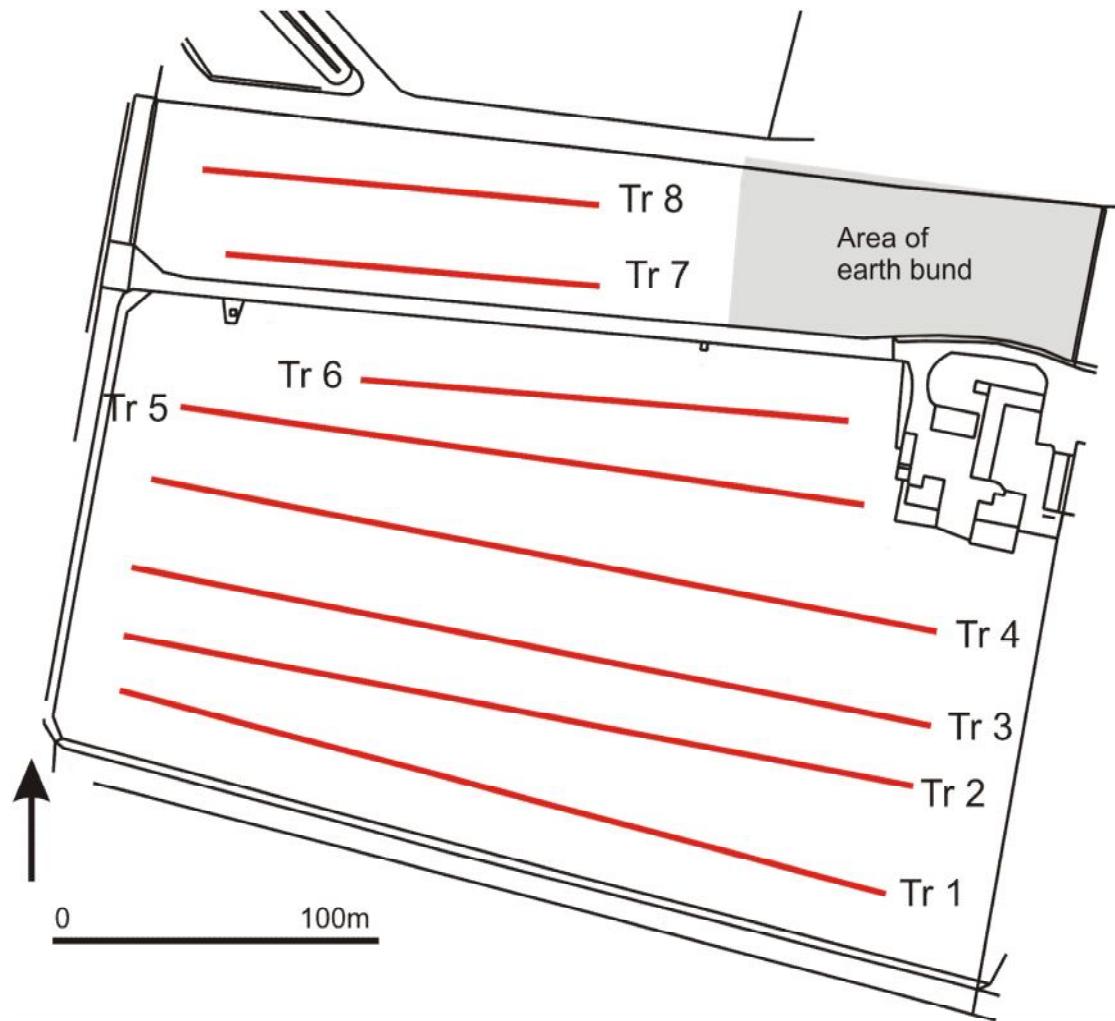
#### 4. Methodology

- 4.1 Eight evaluation trenches were excavated.

Topsoil was removed using a full slew excavator with a 2.0m wide toothless ditching bucket. Any possible features were cleaned and excavated by hand.

- 4.2 All mapping was done with a Magellan Mobile Mapper 120 GPS and Glonass.





**Illus 4** Reproduced from Ordnance Survey digital map data, © Crown Copyright, All rights reserved. 2014. License No 1000410404

## 5. The Results

### Trench 1

GPS E end: 394431,799676                      W end: 394195, 799737  
Orientation: E/W                      Length: 243m Width: 2.0m  
Stratigraphy: Topsoil of 250-400mm overlay stony yellow clay natural.

### Trench 2

GPS E end: 39440,799707                      W end: 394195,799755  
Orientation: E/W                      Length: 250m Width: 2.0m  
Stratigraphy: Topsoil of 350mm overlay stony yellow clay natural.

### Trench 3

GPS E end: 394445,799726                      W end: 394199,799776

Orientation: E/W Length: 250m Width: 2.0m

Stratigraphy: Topsoil of 300-400mm overlay stony yellow clay natural.

#### Trench 4

GPS E end: 394448,799756 W end: 394206,799802

Orientation: E/W Length: 246m Width: 2.0m

Stratigraphy: Topsoil of 300-400mm overlay stony yellow clay natural.

#### Trench 5

GPS E end: 394425,799794 W end: 394213,799824

Orientation: E/W Length: 214m Width: 2.0m

Stratigraphy: Topsoil of 300-400mm overlay stony yellow clay natural.



**Illus 5 Trench 6 looking W**

#### Trench 6

GPS E end: 394420,799821 W end: 394270,799832

Orientation: E/W Length: 150m Width: 2.0m

Stratigraphy: Topsoil of 300mm overlay stony yellow clay natural.

#### Trench 7

GPS E end: 394344,799861 W end: 394228,799871

Orientation: E/W Length: 116m Width: 2.0m

Stratigraphy: Topsoil of 300-400mm overlay stony yellow clay natural.



**Illus 6 Trench 7 looking W**

**Trench 8**

GPS E end: 394431,799886 W end: 394223,799897

Orientation: E/W Length: 118m Width: 2.0m

Stratigraphy: Topsoil of 300-350mm overlay stony yellow clay natural.

## 6. Discussion

No archaeological finds or features were evident.





Illus 7 Trenches 7 and 8 looking E

## 7. Impacts and Mitigations

Impacts There was no evidence of surviving archaeology.

Mitigations None

This does not preclude the possibility of chance finds or archaeological discoveries outwith the evaluation trenches. Should such chance finds occur, then the Archaeology Service, Aberdeenshire Council, or Murray Archaeological Services Ltd, must be informed immediately so that an appropriate archaeological response can be formulated and agreed by all parties concerned.

## References

Murray HK and Murray JC (2008) 'Moss-side, Cove, Aberdeen City / Aberdeenshire (Nigg / Banchory Devenick parishes), evaluation and excavation', *Discovery Excav Scot*, 9, 15-16

Murray HK and Murray JC (2013) 'Blackhills Quarry, Cove Bay, Aberdeen City Desk-based assessment and walkover survey', *Discovery Excav Scot*, 14, 14

Photographs supplied to archive.

Photographic catalogue	
Digital frame no	Content
01	General view Trenches 1, 2 looking W
02-03	Trench 1 looking W to Gateway/Mossie



---

04	General view looking N
05	General view looking E
06	General view looking W
07	Quarry sign
08-09	General view Trenches 1-4 looking NE
10-12	Trench 4 looking E
13-16	Trench 6 looking W and SW
17-19	Trenches 7 & 8 looking E
20-23	Trench 7 looking W