

**FARM STEADING
MAINS OF INVERAMSAY
CHAPEL OF GARIOCH
ABERDEENSHIRE**



Standing Building Survey

Carried out 25th February 2015

by

Murray Archaeological Services Ltd



Report No: MAS 2015-11

by

H K Murray and J C Murray

H K Murray BA, PhD, MCIFA, FSA Scot

J C Murray BA, MCIFA, FSA Scot, FMA

Hill of Belnagoak, Methlick, Ellon, Aberdeenshire AB41 7JN

Telephone: (01651) 806394 e-mail: cmurray@btinternet.com

**FARM STEADING
MAINS OF INVERAMSAY
CHAPEL OF GARIOCH
ABERDEENSHIRE**

- Standing Building Survey -

1. Background
 - 1.1 A standing building survey was required for the steading buildings at Mains of Inveramsay, Chapel of Garioch, Aberdeenshire, prior to their demolition before the construction of two new dwellings.
 - 1.2 The archaeological condition was applied in the context of planning legislation (PAN 2/2011, SPP, SHEP), which states that it is necessary for developers to arrange for archaeological work to take place prior to development, in appropriate circumstances. Planning Application Number: APP/2014/3604 Condition 2.
 - 1.3 A Level 1 Standing Building Survey was required which includes measured plans and elevations, a written account of the building's plan, form, function, age and development sequence in addition to a photographic survey of the interior and exterior of the building.
 - 1.4 Murray Archaeological Services Ltd was commissioned to undertake the work by Colin Thompson, Chartered Architect on behalf of James Webster and Co. The site element of the survey was completed on the 25th February 2015.
2. Desk-top survey
 - 2.1 A search was carried out in the Sites and Monuments Record, Archaeology Service, Aberdeenshire Council and in the Sites and Monuments Records of

the Royal Commission for Ancient and Historic Monuments in Scotland (RCAHMS) through Canmore and Pastmap.

- 2.2 The 1st and 2nd edition Ordnance Survey maps were consulted.
- 2.3 A map dated 1891 of Legatsden Estate was kindly made available by Mr Webster.
- 2.3 Plans and elevations were kindly supplied by Colin Thompson, Chartered Architect and these have been annotated as necessary.

3. The Site

- 3.1 The site lies on a minor road c3km N of Inverurie, between the A96 and the B9001 It is on the higher ground at about 90m OD above the Urie valley.

Parish: Chapel of Garioch

NGR NJ 7473 2578

GPS in front of steading: 374749,825769

RCAHMS No: NJ72NW 105

Aberdeenshire SMR No: NJ72NW0146

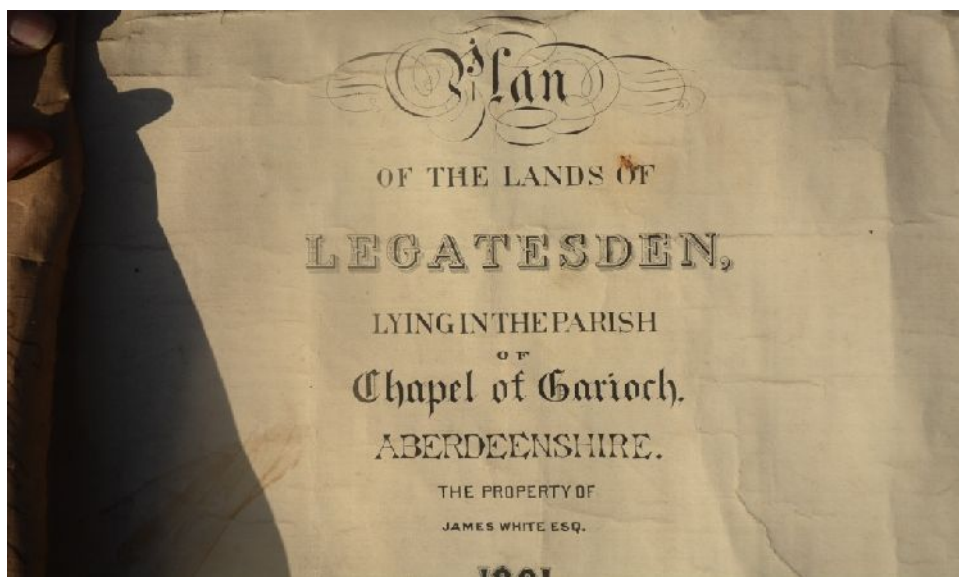
4. Documentary evidence

- 4.1 **Aberdeen Sheet XLV.11 (Chapel of Garioch) 1867 (pub 1870)** shows buildings lying W of a bend in the road, around the N, S, W and part of the E sides of a rectangular yard. A horse mill is shown beside the E wall of the building on the NE of the yard. A smaller free-standing building lies to the S, also forming part of the E side of the yard. Further S are two smaller buildings and an L-shaped building nearer to the road.



Illus 1 Detail of the 1st edition Ordnance Survey 25" map, surveyed in 1867 (published 1870. Sheet xlv.11 (Chapel of Garioch) www.nls.ac.uk

4.2 Plan of the lands of Legatesden lying in the parish of Chapel of Garioch, Aberdeenshire, The property of James White Esq. 1891. This is an estate map that is based on a copy of the 1st OS map, with changes inked in red. The map shows a new layout. The bend in the road has been straightened out. The buildings to the S of the steading have been replaced by the existing house, further back from the road. In the steading, the S range appears to have been rebuilt further S and not extending so far E. The E range has been removed with an enclosed dung yard filling the court. The horse mill has been rebuilt on the N side of a W extension to the N range. The timber building shown on the 1st OS map abutting the W wall of the W range has been replaced further N.



Illus 2 Detail from Plan of the lands of Legatesden lying in the parish of Chapel of Garioch, Aberdeenshire, The property of James White Esq. 1891 (Photographed by MAS Ltd courtesy of Mr Webster)



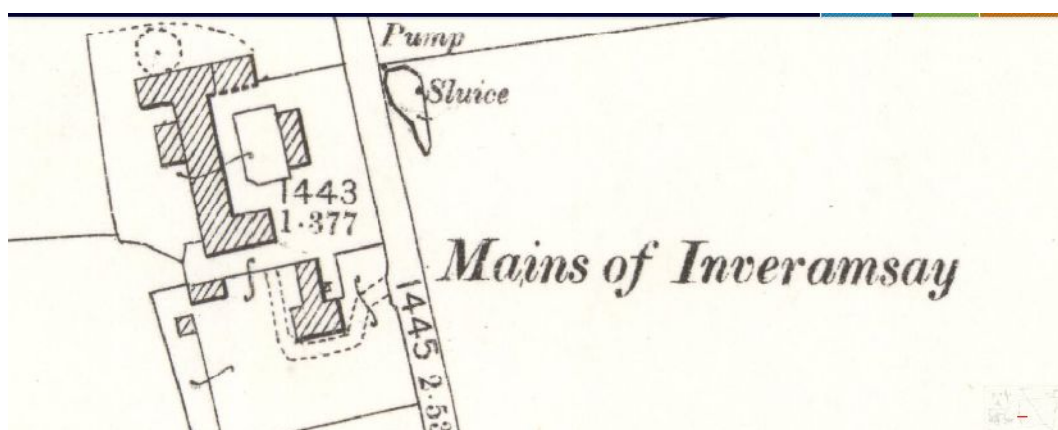
Illus 3 Detail from Plan of the lands of Legatesden lying in the parish of Chapel of Garioch, Aberdeenshire, The property of James White Esq. 1891 (Photographed by MAS Ltd courtesy of Mr Webster)

Contents in 1890

	Aable	Houses and Waste	Fields	Planting	Total
	ac. dec.	ac. dec.	ac. dec.	ac. dec.	ac. dec.
Mansion Ho. of the Proprietor	500	1.500	1.638	2.650	6.288
Lanrons Croft	4.581	.071	-	-	4.652
Legatesden W. Mitchell	58.679	2.872	1.268	-	62.819
Reckwood Croft A. Walker	5.313	681	-	-	5.994
do do tenants	130	.107	-	-	237
Mains of Inveramsay Webster	169.643	4.824	.238	-	174.705
W. Hordland W. McWilliam	3.613	683	-	.186	4.482
do do tenants	330	100	-	-	430
Mill of Inveramsay Jas. Black	72.130	3.076	.613	-	75.819
Plantations Proprietor	-	-	-	29.618	29.618
Half of River Stone do	-	1.155	-	-	1.155
Public Roads	-	2.407	-	-	2.407
	314.919	17.416	3.757	32.452	368.544
			Total		

Illus 4 Detail from Plan of the lands of Legatesden lying in the parish of Chapel of Garioch, Aberdeenshire, The property of James White Esq. 1891 (Photographed by MAS Ltd courtesy of Mr Webster)

- 4.3 The 2nd edition 25"/mile Ordnance Survey of 1899 (published 1900. **Aberdeenshire Sheet 045.11**) updated only a few years after the Estate map shows few additional changes with the exception of a small outhouse S of the steading and W of the house.



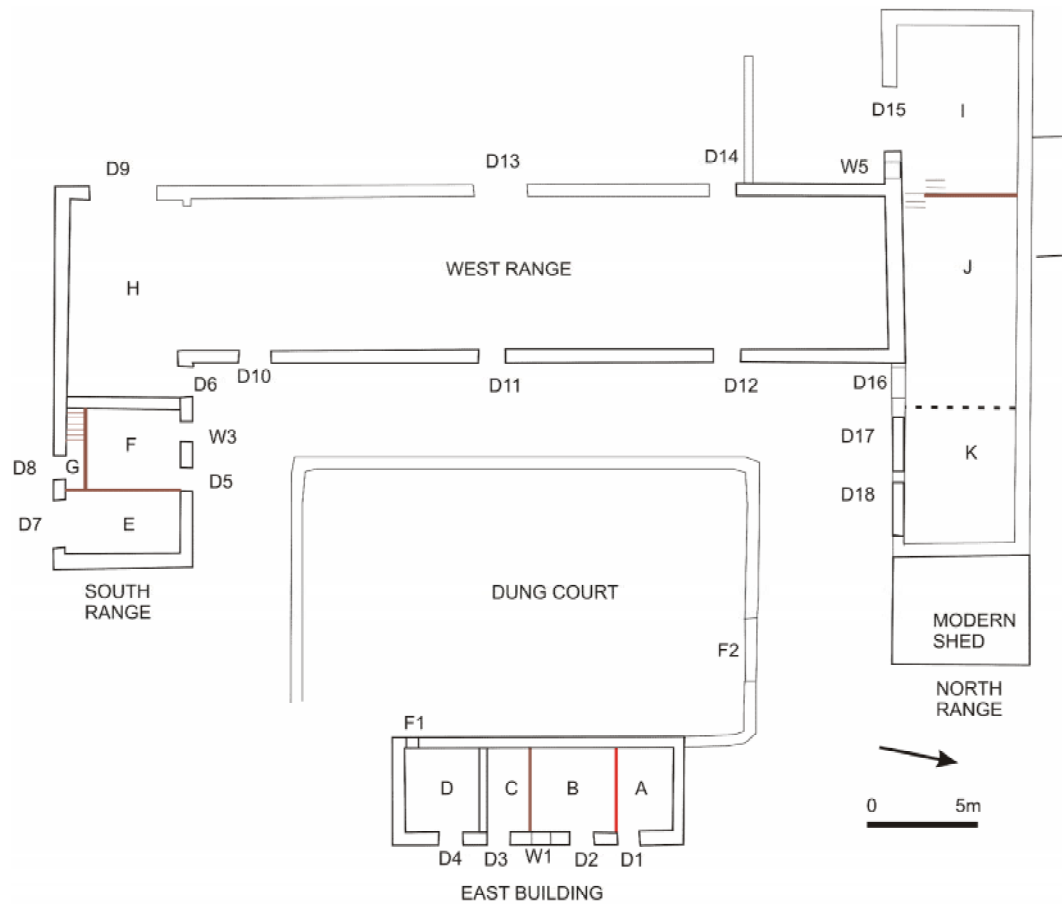
Illus 5 Detail of the 2nd edition 25"/mile Ordnance Survey of 1899 (published 1900. Aberdeenshire Sheet 045.11) www.nls.ac.uk

5 Methodology

- 5.1 The ground plans (illus 6, 33) and elevations (illus 34) have been annotated to show details and to indicate differences in the building materials which may help in understanding the development and history of the building.
- 5.2 The areas recorded were photographed. The full set of photographs will be supplied for the archive and an annotated plan in the present report (illus 35) indicates the position of each.

6 The Steading

The buildings shown on the 1891 Estate plan and the 2nd OS map of 1899 are substantially intact, although altered internally. We are grateful to Mr Webster for discussing the use of the buildings.



Illus 6 Main plan. Annotated from drawing courtesy of Colin Thompson, Chartered Architect Services.

6.1 EAST BUILDING

Dimensions 13.15 x 4.6m externally

Original use Ducks/pigs at S end. Workshop in centre.

Present/recent use Workshop.

Walls Squared rough dressed field stones with granite rybats. 500mm thick.

Roof Slate. Metal skylights (3 at front, 1 at rear).

Chimneys Chimneys at either end do not appear to have flues or any blocked fireplaces and may be a purely ornamental feature. Both are square, built of dressed granite blocks with plain table.



Illus 7 East building Front (E) facade.

Doors and windows

E wall

D1 H: 1.95m W: 1.07m Granite lintel. Wooden door.

D2 H: 1.99m W: 1.07m Granite lintel. Wooden door.

W1 H:1.17m W:0.84m Lintel and rybats with dressed chamfer.



Illus 8 East Building. Detail of door D1



Illus 9 East Building. Window W1 with chamfered lintel and rybats

D3 H: 1.99m W: 1.07m Granite lintel. Wooden door.

D4 H: 1.83m (to stone step). W: 1.07m Granite lintel. Wooden door.

W wall

F1 H: 0.83m W: 0.60m. Rough stone lintel. Small stone-blocked opening.

Opens into dung court. Probably originally for ducks or possibly pigs.



Illus 10 East Building. Detail of blocked opening F1.

Interior

The interior was divided into 4 rooms (A-D). Room A was 2.5m wide and separated from room B by a brick wall. It had a small recess H: 350mm W: 300mm on the inner face of the gable wall. This had side stones with chamfer (like window W1). It was not visible externally. Room B was 3.9m wide and was in use as a workshop for repair of farm equipment. It was well-lit by window W1. The partition between rooms B and C was timber. Room C was 1.9m wide. No evidence of function. The wall between rooms C and D was stone. Room D could not be entered as it was in use as a store but would be c. 3.3m wide.

The position of the doors suggests that the position of the partition walls is original although the timber and brick walls may have been replaced.

6.2 DUNG COURT

The cobbled dung court was unusually well preserved with the enclosing wall remaining. Internally it was c. 11m E/W by 18.45m N/S. The stone wall was 350mm thick. The height at the back internally was 2.5m and 1m externally but the wall had clearly been raised; the original internal wall height appears to have been c 1.2m. Two stone pillars in the N side indicated the original cart opening c 2.9m wide (F2). This had been blocked with stone with the present opening a break-through on the SE corner.



Illus 11 Dung court looking NW



Illus 12 Looking N across dung court with blocked entry at far end. The original wall height is clearly visible.

6.3 SOUTH RANGE

Dimensions 17.3m E/W by 6.25m N/S externally

Original use The E end was originally a shed for the gig/horse trap and a feed store for the horses with a chaumer in the loft above for the unmarried farm workers. The S end, which lacked a loft was the horse stables.

More recently the S end had been cleared of the trevies of the stalls and used for cattle.

Present/recent use Machine store.

Walls Split rubble stone in horizontal courses. Rough dressed granite rybats. 550mm thick.

Roof Slate over A-couples

Chimney There is a squared granite chimney with flat table at the E gable serving a fireplace at 1st floor/attic level in the chaumer.

Doors and Windows

N wall

D5 H: 2.34m W:1.07m granite lintel and rybats, wooden door

W3 H:1.3m W:0.91m Chamfered rybats and lintel (cf East Building W1)

D6 H:2.1m W:1.37m Granite lintel and rybats. Concrete blocking.



Illus 13 N wall of South Range. Door D5 and window W3 into feed store. Door D6 (RHS) into stable.



Illus 14 N wall of South Range. Detail of window W5 with chamfered rybats and lintel
E wall

W2 H: 1.32m W0.80m Granite lintel and rybats. Stone blocked. If this was a functional window it must have been replaced by the dormer W4 when the fireplace and chimney were added to the chaumer.



Illus 15 South Range E wall. Arrow marks blocking W2

S wall

D7 H: 2.27m W:2.15m Granite lintel and rybats, wooden door (into gig shed)

D8 H: 2.15m W:1.07m Granite lintel and rybats, wooden door (into stair
for chaumer)

W4 Slate sided and roofed dormer in chaumer.



Illus 16 South Range. S wall. Double doors (D7) into gig shed. Red door (D8) into stair to chaumer.

W wall

D9 H: 3.1m W: 3m. This was a modern widening of an original narrower door. The N side of doorway maybe original as it included (or possibly re-used) several chamfered stones.



Illus 17 South Range. South (enlarged) door D9

Interior

The E end of the range had two 'rooms' at ground level, divided by wooden partitions. At the E end, area 'E' was the full width of the building with access through door D7; it had been the gig/horse trap shed.



Illus 18 Feed store (F) and base of stair to chaumer

Room F, which had been a feed store was only 4.05m wide (N/S) with the space to the S of the partition taken up by a small lobby (G) and wooden stair (Illus 19) up to the 1st floor/loft. There was a narrow lobby at the top of the stair and a door through the wooden partition into the chaumer or room for unmarried farm workers. This was all lined in pine and had a dormer window (W4) in the S side and a tiled fireplace, flanked by two shelves, in the centre of the E gable (Illus 20).



Illus 19 Stair to chaumer



Illus 20 Chaumer, looking E

At the S end, separated by a stone wall, there was the original stable. Although the trevices of the stalls were gone, the scars were visible on the inside of the S

wall (Illus 21); there appear to have been 7 stalls. (This might suggest the farm had 3 pairs of heavy horses and a horse or pony used for the gig and for the horse mill).



Illus 21 South Range. Inside of S wall Arrow indicates one of scars of former trevises

Near the top of the middle of the E wall (Illus 22), there was a small stone-blocked opening. According to Mr Webster this had opened into the lobby of the chaumer and would have allowed the horsemen to check the horses (although apparently on occasion it was also used for a night-time pee!) Another scar at the base of this wall near door D6 had been a feed bin.



Illus 22 South Range. Interior of E wall. Arrow indicates blocking. 'a' indicates position of former feed bin

This area had all been cleared out and the larger doorway to W added to make it easier to use for cattle. The wall between the South Range and the West range had also been removed at some point, with the roof here supported by a steel beam resting on concrete blockwork.

6.4 WEST RANGE



Illus 23 West Range W facade

Dimensions 31.5m N/S by 8m E/W externally

Original use Originally used for tied cattle, later opened out for loose cattle.

Present/recent use Derelict

Walls Split rubble stone in horizontal courses. 550mm thick.

Roof Slate over A-couples with double tie-beams (probably because of the greater span). Ceramic ridge ventilators.



Illus 24 West Range. E wall. Door D10 at LHS

Doors and Windows

E wall

D10 H:2.18m W: 1.20m. Granite lintel and rybats

D11 H:2.20m W: 1.20m. Granite lintel and rybats. Stone blocked.

D12 H:2.18m W: 1.22m. Granite lintel and rybats

W wall

D13 H: 2.15m W: 2.44m Granite lintel and rybats. Stone blocked.

D14 H:2.15m W:1.22m Granite lintel and rybats.

A stone wall at right angles to the E wall of the W range was the end wall of a neep store, presumably the building shown on the 1891 and 1898 maps.

Latterly this had been replaced by a Dutch barn but this was demolished c2007 and replaced by the modern cattle buildings to the W, away from the old steading.

Interior All internal features had been stripped out when it was converted for loose cattle (Illus 25).



Illus 25 West Range, interior looking N

6.5 NORTH RANGE

Dimensions 24.5m E/W by 6.2m N/S externally

Original use Mill and store for grain and threshed straw. Cart sheds

Present/recent use Until recently still used for grain. Now storage.

Walls Split rubble stone in horizontal courses. 550mm thick.

Roof Slate



Illus 26 North Range, S wall. Door D15 into mill



Illus 27 North Range. S wall. Blocked window W5 into lower level straw store

Doors and Windows

S wall

- D15 H: 2m W: 2.74m Wooden lintels granite rybats (Illus 26)
- W5 H: 1.12m W: 0.73m Chamfered lintel, sills and rybats. Stone blocked.
This had originally given light to the lower level, below the grain loft.
(Illus 27)
- D16 H: 2.15m W: 1.39m Granite lintel and rybats. Opened from yard into
straw store
- D17 H: 2.15m W: 2.42m. Granite lintel and rybats. Cart bay opening to
yard.
- D18 H: 2.15m W: 2.42m Granite lintel and rybats. Cart bay opening to
yard
- W6 H: 0.70m W: 1m. Measured from elevations only. Opened into grain
loft
- W7 H: 0.70m W: 1m. Measured from elevations only. Opened into grain
loft



Illus 28 North Range., E end of S wall with cart bays D17, D18 blocked by concrete blocks.

N wall

W8- W10 H: 1m W: 0.80m. Measured from elevations only. Opened into
grain loft

Lean-to engine house against N side of N wall. Not accessed.



Illus 29 North Range. N wall with windows W8-W10 and engine house. The cover below W8 (RHS) protected the shaft from engine house

E wall

W11 H: 1.5m. W: 1m. Measured from elevations only. Opened into grain loft

A modern shed abutted the E wall. There was no access.

Interior

The W end of the building was the threshing mill, originally powered by a horse mill outside the N wall, later by an engine. The shaft for the belts is through the wall below window W8 with a lean-to engine house (not accessible) against the outside of the N wall (Illus 29). E of the threshing mill, there was a wooden stair up to a grain loft and a stair down to a store for the threshed straw (Illus 30-32). The cart bays, opening into the yard, lay at the E end of the building (Illus 28).

The floor where the threshing mill had been had been excavated out for recent use to allow grain elevators. Part of the grain loft had been partitioned off and the E end of the building used as a joiner's store (Not accessed).



Illus 30 North Range. W end showing stair up to grain loft and stair RHS down to store for threshed straw



Illus 31 North Range. Grain loft looking E with modern blocking

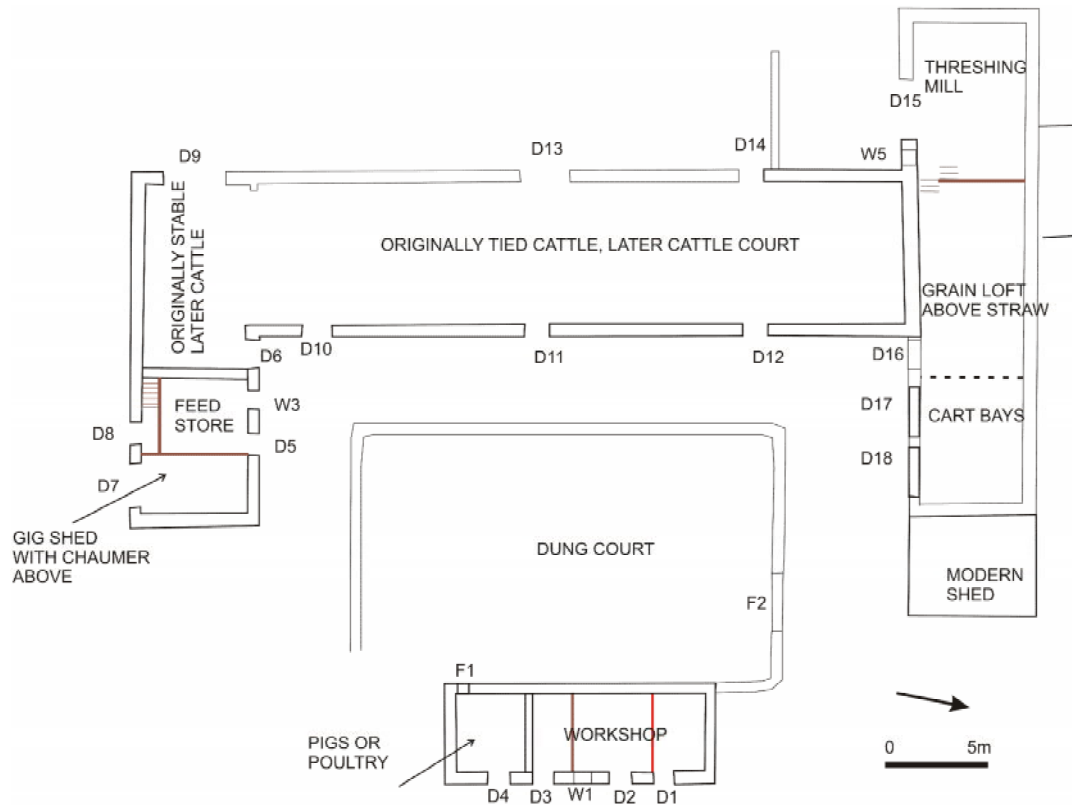


Illus 32 North Range. Grain loft looking W to door through partition to stair down to threshing area.

7 Discussion

Mains of Inveramsay is a fairly typical Aberdeenshire improvement steading (Glendinning and Wade Martins 2008, 119-120). Part of the steading appears to pre-date the 1st OS map of 1867 but there was substantial re-building by

1891 when the estate plan was drawn. Although the steading had been adapted for access for machinery and for the housing cattle loose rather than tied, it nevertheless retains many of the original features.



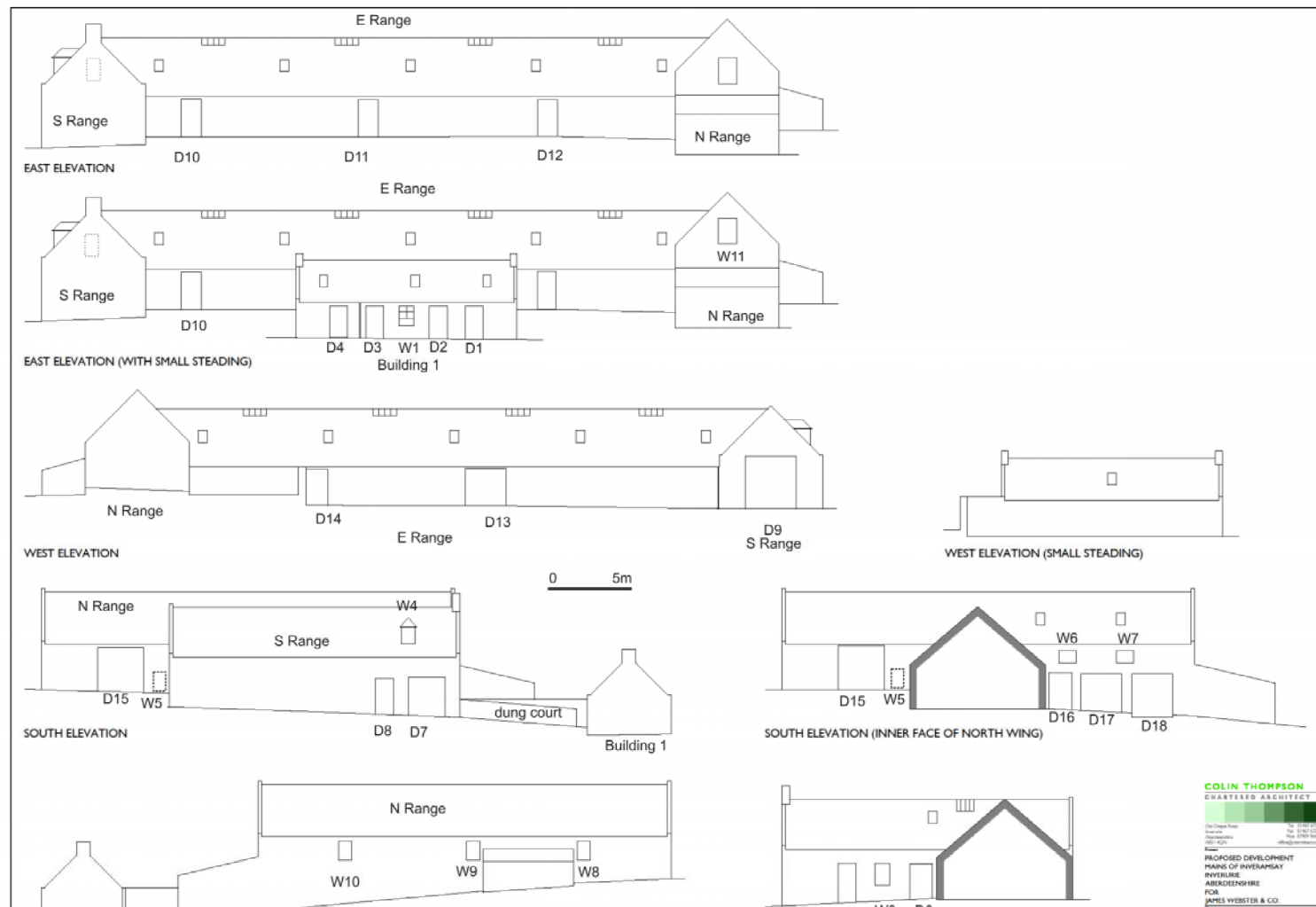
Illus 33 Functions of the buildings. Plan annotated from drawing courtesy of Colin Thompson, Chartered Architect

References

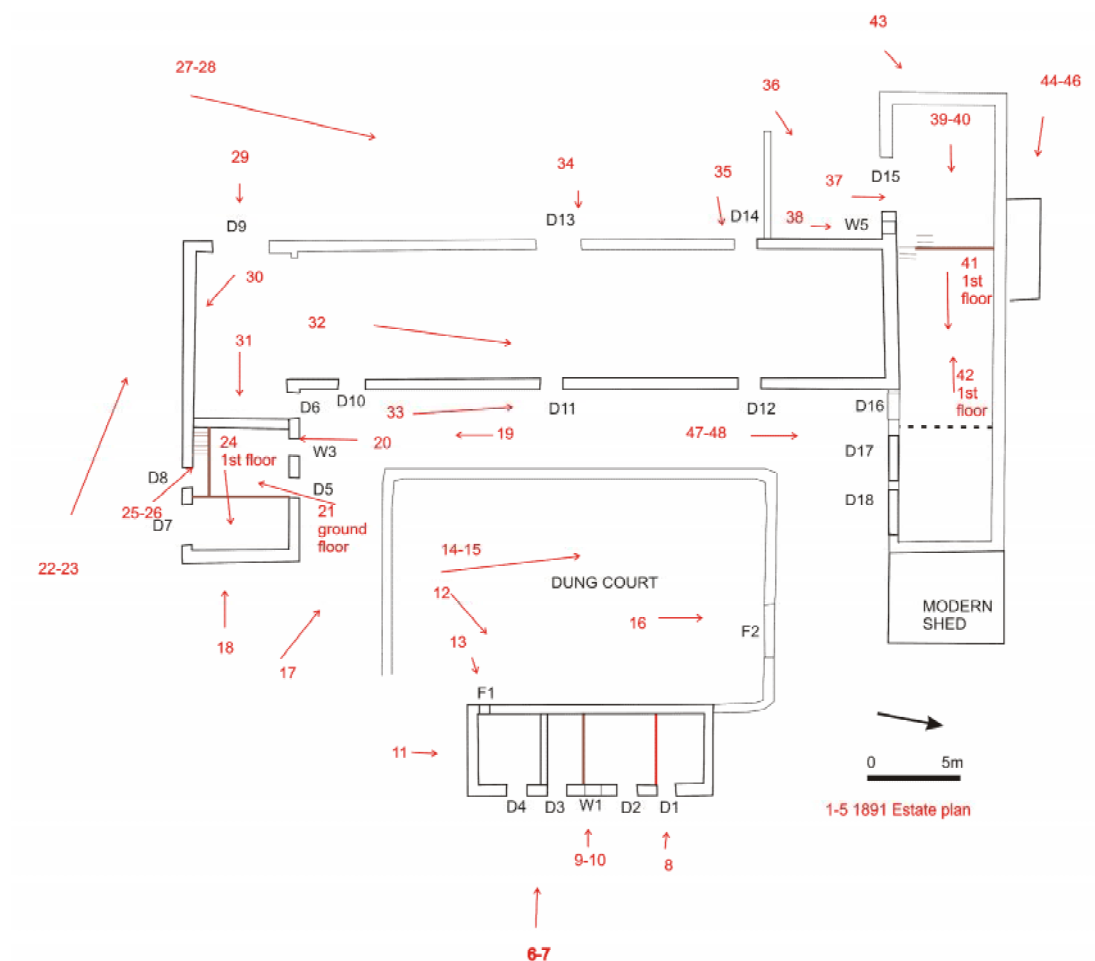
Glendinning, M and Wade Martins, S 2008 Buildings of the Land: Scotland's Farms 1750-2000 Edinburgh: RCAHMS.

9 Archive

A full set of photographs with the photo location plan (Illus 35) will be supplied to the Aberdeenshire SMR in Aberdeen and to the NMRS.



Illus 34 Elevations. Annotated from drawing courtesy of Colin Thompson, Chartered Architect



Illus 35 Photographic references. Plan annotated from drawing courtesy of Colin Thompson, Chartered Architect.