

**CHAPLAIN'S COURT  
20 THE CHANONRY  
OLD ABERDEEN**



**Standing Building Recording  
and Watching Brief**

Carried out between 6<sup>th</sup> May 2013 and 21<sup>st</sup> March 2014  
by

**Murray Archaeological Services Ltd**



**Report No: MAS 2013-13**

**Part 2**

**Photographic Catalogue**

by

**H K Murray and J C Murray**

H K Murray BA, PhD, MIFA, FSA Scot

J C Murray BA, MIFA, FSA Scot, FMA

Hill of Belnagoak, Methlick, Ellon, Aberdeenshire AB41 7JN

Telephone: (01651) 806394 e-mail: cmurray@btinternet.com

## Methodology

Recording took place over 11 months in 2013-2014 and a total of 595 photographs were taken. In many cases a single feature, such as the fireplace in the Dining Room, was recorded on a number of occasions as the building works progressed. The E elevation for example, was photographed while the original harling was on, again after the harling was removed and unknown features revealed and, in some instances, again after the new harling had been applied or in different light to emphasise features.

A detailed written catalogue is presented below.

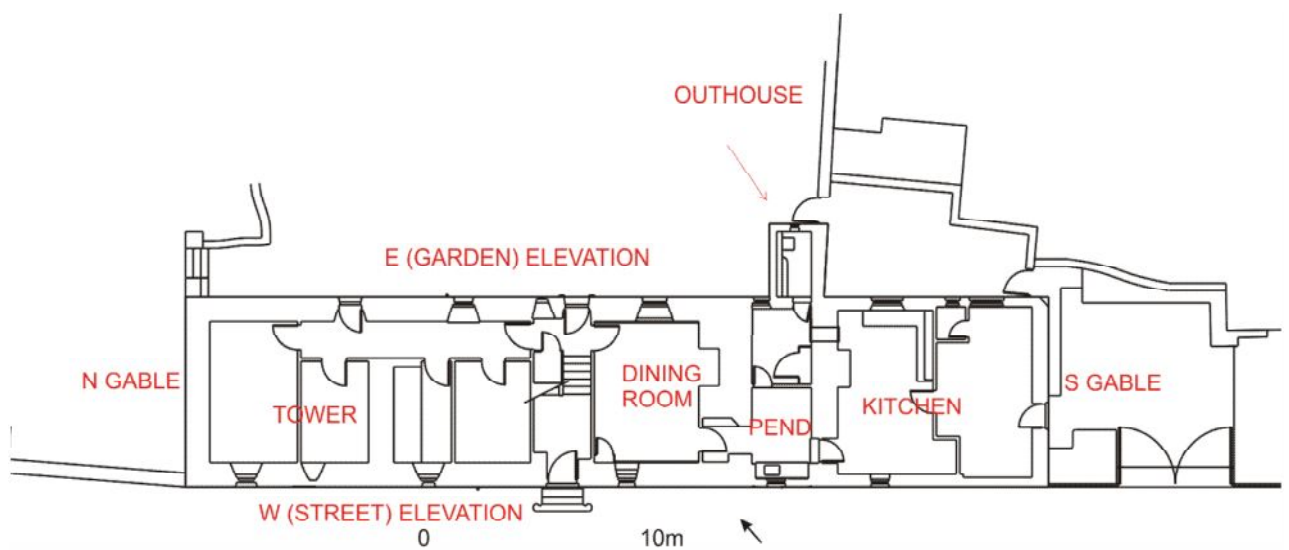
In the catalogue and in the archive photographs, the photographs are grouped by date taken.

To aid identification the main location of each photograph (E elevation, W elevation, Pend, Dining Room, Kitchen etc) is cross-referred to the relevant section of the analysis in Part 1 of this report. Location of these areas is shown on Illus 1.

Annotated plans show the photographs for the Pend (Illus 2), the Dining Room (Illus 3) the Kitchen (Illus 4) and the excavated sondages in the garden (Illus 8).

As all the identification of windows etc is shown on the main elevations, these are repeated below: E elevation (Illus 5), N gable (Illus 6) and W elevation (Illus 7).

A full set of photographs will be supplied on CD to the City of Aberdeen SMR, to the NMRS and to the owners.



**Illus 1** Main areas referred to in the photographic catalogue below.

## Photographic Catalogue

File number	Photo number	Date taken	Content	Illus	Part 1 Report Section
<b>20 THE CHANONRY 1</b>		<b>6 MAY 2013</b>	<b>MOSTLY E ( GARDEN ) ELEVATION AND RECORDING PAVING OUTSIDE DINING ROOM WINDOW</b>		
	001		E facade and paving by window W6	5	6.4
	002		E facade and paving by window W6, looking S	5	6.4
	003		E facade and paving by window W6, looking W	5	6.4
	004		Site code		
	005		E facade and paving by window W6, looking SW	5	6.4
	006-7		E facade and paving by window W6, looking S	5	6.4
	008-010		E facade paving and door D1	5	6.4
	011-012		E facade paving, detail	5	6.4
	013-014		E facade paving & door D1 threshold detail	5	6.4
	015-016		Brick feature F21 below window W6 looking W/SW	Part 1, illus 78	8.2
	017-18		Paving and brick infill between outhouse and pend blocking in E wall	Part 1, illus 78	8.2
	019		Paving looking NW	Part 1, illus 78	8.2
	020-21		E elevation. W7 as first exposed	5	6.4
	022-023		E elevation, W9	5	6.4
	024		E elevation, W10	5	6.4
	025		E elevation, D1 and W7	5	6.4
	026		E elevation, D1	5	6.4
	027-028		E elevation, W6	5	6.4

File number	Photo number	Date taken	Content	Illus	Part 1 Report Section
	029-031		Outbuilding and blocked E arch of pend and W4	5	6.7
	032		N wall of outbuilding, pend on RHS	1	6.7
	033		S wall of outbuilding,	1	6.7
	034-035		E elevation, W8	5	6.4
	036		E elevation. Detail of cast iron drain pipe (removed)	5	6.4
	037-038		E elevation, D2	5	6.4
	039		E elevation, general	5	6.4
<b>20 THE CHANONRY 2</b>		<b>7 MAY 2013</b>	<b>E ELEVATION, N GABLE, PART OF W ELEVATION</b>		
	040-042		E elevation, general before harling removed	5	6.4
	043-044		S end of E elevation	5	6.4
	045-047		N end of E elevation with raggle of N range roof	5	6.4
	048-050		N end of E elevation with raggle of N range roof, detail	5	6.4
	051-052		Oblique views looking SW at pend and pended chamber with outbuilding on E side	5	6.4
	053-054		Pend and pended chamber with outbuilding on E side, detail	5	6.4
	055		S chimney main block (W range)	5	6.3
	056		Central chimney main block (W range)	5	6.3
	057		N chimney main block (W range)	5	6.3
	058-059		N chimney of kitchen and S finial of pend block.	5	6.3
	060		SE skeuputt pend block. Date stone 17(18)	5	6.3
	061		Oblique view looking SW at pend and kitchen block roofline	1	6.3
	062		E elevation. Detail of D1 moulding	5	6.4

File number	Photo number	Date taken	Content	Illus	Part 1 Report Section
	063		E elevation. Detail of D2 moulding	5	6.4
	064-066		N gable (tower) general	6	6.5
	067		N gable (tower) W14	6	6.5
	068		N gable (tower) W15 and blocking below	6	6.5
	069-073		N gable (tower). Shadow of former 19 <sup>th</sup> century building F6 on wall	6	6.5
	074-076		E elevation. Looking NW. Detail of N range roof raggle	5	6.4
	077-079		E elevation. Brick feature F21 below W6	5	6.4
	080-081		E elevation. Threshold of D1 exposed after removal of concrete	5	6.4
	082-083		Brick pillar at NE corner of tower showing stonework of N wall, N range	6	8.2
	084-090		E elevation in shadow, before removal of harling	5	6.4
	091-092		S gable of kitchen block	1, 4	6.8
	093-094		Looking N up The Chanonry at W elevation and roofs	7	6.6
	095-096		Chamfer at SE corner of kitchen block	4	6.2
	097		Looking N at W elevation and roofs	7	6.6
	098-099		S gable main block (W range) with detail blocked W41	7	6.7
	100-101		W elevation. Street (W) blocking of pend arch	7	6.6
	102		W elevation. Dormer W22 above pend arch	7	6.6
	103		W elevation. Gavin Dunbar's coat of arms above pend	7	6.6
	104		W elevation. SW skeuputt (replacement?) of pend block	7	6.6
	105-106		E elevation. E wall of kitchen block looking S/SW	5	6.4
	107-109		W elevation. Drain along base of street	7	6.6

File number	Photo number	Date taken	Content	Illus	Part 1 Report Section
			frontage		
	110	.	W elevation. Blocked window F7 above D4	7	6.6
	111-112		W elevation. Mason's mark on RHS of F7	7	6.6
	113		W elevation. F7	7	6.6
	114		W elevation. Window W24 and blocked windows W23 and W25	7	6.6
	115		W elevation. Window W27 and blocked windows W 26 and W28	7	6.6
	116		W elevation. Window W29 and blocked window W30	7	6.6
	117		W elevation. W17	7	6.6
	118		W elevation W19	7	6.6
<b>20 THE CHANONRY 3</b>		<b>8 MAY 2013</b>	<b>W ELEVATION AND N GABLE</b>		
	119-121		W elevation. Looking N up The Chanonry, roofscape	7	6.6
	122-123		W elevation. Pend W side arch	7	6.6
	124		W elevation. Pend W side arch and W22	7	6.6
	125		W elevation. W arch of pend. Gavin Dunbar coat of arms	7	6.6
	126		W elevation. Pend block SW skeuputt	7	6.6
	127-129		W elevation. Window F7 and detail	7	6.6
	130		W elevation. Window W24 and blocked windows W23 and W25	7	6.6
	131		W elevation. Window W27 and blocked windows W26 and W28	7	6.6
	132		W elevation. Window W29 and blocked window W30	7	6.6
	133		W elevation. W17	7	6.6
	134		W elevation. W19	7	6.6
	135		W elevation. W18	7	6.6

File number	Photo number	Date taken	Content	Illus	Part 1 Report Section
	136		W elevation. W 16	7	6.6
	137		NW corner of tower rybats and W15 and blocking below	6	6.5
	138-139		N gable of tower, W14, W15 and blocking below, and part of street (W) elevation	6	6.5
	140		W elevation, looking S along The Chanonry	7	6.6
	141		W elevation. W34 and W35	7	6.6
	142-145		W elevation. Gutter along street facade	7	6.6
<b>20 THE CHANONRY 4</b>		<b>1 JUNE 2013</b>	<b>ROOF RECORDING</b>		
	146		Recording roof where new dormer W13 inserted into roof E elevation	5	6.3
	147-159		Details of roof after removal of slates and sarking at break-through. Details rafters and upper surface of ceiling	5	6.3
	160-161		E elevation. General view of E side of roof without slates	5	6.3
<b>20 THE CHANONRY 4A</b>		<b>1 JUNE 2013</b>	<b>ROOF RECORDING</b>		
	162-164		Saw/knife cut carpenter's marks on rafter at cut through for new dormer W13	5	6.3
	165		Detail of roof construction at cut through for new dormer W13	5	6.3
<b>20 THE CHANONRY 5</b>		<b>4 JULY 2013</b>	<b>TOWER ROOF RECORDING E ELEVATION AFTER REMOVAL OF HARLING (SCAFFOLDING UP)</b>		
	166-173		Tower roof. Looking through hatch in S side of tower into tower roof. Looking to inside of N gable. Possible chimney	1	6.3
	174-177		Tower roof. Carpenter's marks on re-used timbers over hatch in S side of tower into tower roof.	1	6.3
	178		Hatch in S side of tower into tower roof.	1	6.3

File number	Photo number	Date taken	Content	Illus	Part 1 Report Section
	179-187		Tower roof. Looking N through hatch at roof timbers. Note carpenter's marks on 180, 181, 183, 184, 186	1	6.3
	188-189		E elevation. W5 with outer brick blocking as revealed when harling removed	5	6.4
	190		E elevation. Relating W5 to W6	5	6.4
	191-194		E elevation. W7 as revealed when harling removed	5	6.4
	195-197		E elevation. E elevation. W8 and relieving arch as revealed when harling removed	5	6.4
	198-200		E elevation. D 2 and stone above (possibly related to a stair) as revealed when harling removed	5	6.4
	201-202		E elevation. W5 after outer brick blocking removed. Iron bars and inner brick blocking exposed	5	6.4
	203-204		E elevation. W 7 and W8 after harling removed	5	6.4
	205		E elevation. Possible voussoir stones of arch between W7 and W8 (also visible on photo 204)	5	6.4
	206-207		E elevation. W8 and D2 with stone above. W11 and D3 blockings visible above scaffolding planks. After harling removed.	5	6.4
	208		E elevation. W11 and D3 blockings	5	6.4
	209-210		E elevation internal. Relieving arch on inside of D2	5	6.4
	211-212		E elevation after removal of harling. W11 and inner blocked window looking N along E facade	5	6.4
	213-214		E elevation after removal of harling. W11 details	5	6.4
	215		E elevation after harling removed. D3 blocking. From scaffolding, looking N along E facade	5	6.4
	216-217		E elevation after harling removed. D3 blocking. From scaffolding.	5	6.4



File number	Photo number	Date taken	Content	Illus	Part 1 Report Section
	218-220		E elevation after harling removed. W11 blocking. Detail from scaffolding.	5	6.4
	221-225		E elevation after harling removed. S angle of roof raggle of N range on E wall of tower. Tower rybats visible above	5	6.4
	226-227		E elevation after harling removed. N angle of roof raggle of N range on E wall of tower.	5	6.4
<b>20 THE CHANONRY 5A</b>		<b>27 JULY 2013</b>	<b>W5 AS BLOCKING REMOVED NUMBERS OUT OF SEQUENCE</b>		
	558-564		E elevation. W5 from outside looking in after part of the inner blocking and all of outer blocking removed at outside wall. Shows the rubble infilled into the void between the blocked window and the brick blocking of the back of the E side of fireplace.	5	6.4
	565-566		E elevation. W5 showing gap through which photos 558-564 were taken	5	6.4
	567		E elevation with scaffolding	5	6.4
<b>20 THE CHANONRY 6</b>		<b>10-11 OCTOBER 2013</b>	<b>INTERIOR. BEGINNING STRIPPING OF DINING ROOM AND PEND.</b>		
	228- 229		Pend. Inside pend, looking E to garden arch blocking. Kitchen hatch (removed) on RHS	2	7.1
	230-231		Pend. Inside pend. S wall. Hatch (now removed) to kitchen.	2	7.1
	232-233		Pend. Inside pend looking E to blocked garden arch and W4 and door (to outbuilding) in blocking.	2	7.1
	234-235		Pend. Inside pend 'S room'. Boiler against N wall	2	7.1
	236-237		Pend. Inside pend. Graffiti '77 on stone on S side of E (garden) pend arch	2	7.1
	238-245		Pend. Inside pend. Other graffiti on stones on S side of E (garden) pend arch	2	7.1
	246		Pend. Inside pend. Boiler and pipes	2	7.1

File number	Photo number	Date taken	Content	Illus	Part 1 Report Section
			against N wall		
	247-254		Dining Room. S wall with modern fireplace. 16 <sup>th</sup> century fireplace beginning to emerge as plaster removed	3	7.2
	255-261		Dining Room. Modern fireplace. Details of modern cupboard F17 built into void of blocked 16 <sup>th</sup> century fireplace	3	7.2
	262-265		Dining Room/Pend passage. Alcove F16 built into void of blocked 16 <sup>th</sup> century fireplace	3	7.2
	266-269		Dining Room. Blocking of W5 as seen from inside of 16 <sup>th</sup> century fireplace, looking out to E	3	7.2
	270-274		Dining Room. S wall with modern fireplace. More of 16 <sup>th</sup> century fireplace beginning to emerge as plaster removed	3	7.2
	275-276		Dining Room. Modern fireplace. Details of cupboard F20 built into void of blocked 16 <sup>th</sup> century fireplace	3	7.2
<b>20 THE CHANONRY 7</b>		<b>28-31 OCTOBER 2013</b>	<b>WATCHING BRIEF AND EXCAVATED SONDAGES AFTER NEW HARLING ON AND SCAFFOLDING REMOVED.</b>  <b>SOME DETAILS OF W ELEVATION FROM SCAFFOLDING</b>		
	277-279		E garden wall- built after this extra ground added to property in 1873. Raggle shows position of building shown on 1899 OS map	Part 1, Illus 5	9.1
	280-285		E elevation. Views with new harling	5	6.4
	286-288		E elevation internal. W7 from inside	5	6.4
	289-294		Details of surviving fragments of N range N wall where it abuts tower, below brick column and below steps to upper garden	8	8.2
	295-296		Sondages S2 and S3 looking N. Sondage S1 in background. Shows S wall of N range	8	8.2
	297-298		Sondages S2 and S3 looking E with D2 in background	8	8.2
	299-300		Sondage S2	8	8.2

File number	Photo number	Date taken	Content	Illus	Part 1 Report Section
	301-302		Sondage S3 looking E to wall of tower	8	8.2
	303-304		Sondage S3 fully excavated. Shows D2 and wall of tower in relation to S wall of N range	8	8.2
	305-308		E elevation. Looking through W5 after inner brick blocking and bars removed. Shows the back of the brick blocking at E side of modern fireplace. Note stone slabs over inner part (within the 16 <sup>th</sup> century fireplace).	5	6.4
	309		Dining Room. Marks on stone to LHS of fireplace where builders tried to break through for pipes.	3	7.2
	310-314		Looking W across Sondages S2 and S3. Poles mark line of S wall of N range	8	8.2
	315-320		Looking W at E wall of tower showing D2 and roof raggle of N range in relation to excavated line of N range S wall (poles)	8	8.2
	321-322		Sondage S2. Wall fully exposed. Excavated to natural.	8	8.2
	323-325		Sondage S3. Wall fully exposed. Excavated to natural.	8	8.2
	326-327		Sondages S1-S3 looking N (Vertical pole by steps indicates line of N wall of N range).	8	8.2
	328-335		Oblique views of tower E wall, D2 and excavated lines of N and S walls of N range (Poles).	8	8.2
	336-341		W elevation from scaffolding. Gavin Dunbar coat of arms above pend arch	7	6.6
	342-346		W elevation from scaffolding. Mason's mark on window F7	7	6.6
	347-349		W elevation from scaffolding. Initials/graffiti GF on stone on W elevation	7	6.6
	350-352		Machine excavation of topsoil on footprint of new garage. N side of N gable of tower. Indicates big build up and dumping of topsoil	1	8.1
<b>20 THE</b>		<b>12 NOVEMBER</b>	<b>INTERIOR. DINING ROOM, PEND AND</b>		

File number	Photo number	Date taken	Content	Illus	Part 1 Report Section
<b>CHANONRY 8</b>		<b>2013</b>	<b>KITCHEN</b>		
	353		Tiles removed from Dining Room floor	3	7.2
	354-356		Dining Room. Floor removed to top of natural. Looking to inside of E wall and W6. Note patches of very thin black deposit. Note in photo 356 possible trace of relieving arch to RHS of W6	3	7.2
	357		Dining Room. 'Modern fireplace' before removal	3	7.2
	358-363		Pend with E (garden) arch blocking removed. Boiler still in situ.	2	7.1
	364-369		Kitchen. Floor removed. E wall of brick built over stones of base of earlier E wall of S part of W range	4	7.3
<b>20 THE CHANONRY 9</b>		<b>13 NOVEMBER 2013</b>	<b>INTERIOR. KITCHEN AND DINING ROOM</b>		
	370-381		Kitchen. E wall of brick built over stones of base of earlier E wall of S part of W range	4	7.3
	382-384		Kitchen. Outer S corner of pend wall and possible surviving stones of W range S part at junction of W wall of kitchen (brick) and the S side of pend W arch.	4	7.3
	385-387		Kitchen. Blocked wide stable door F11 in W wall. Note timber lintel.	4, Part 1 Illus 69	7.3
	388		Kitchen. Door in S gable	4	7.3
	389-390		Kitchen. S gable from inside. S chimney blocking earlier blocked loft opening/door	4	7.3
	391-393		Kitchen. N chimney built against outside (S) side of pend wall	4	7.3
	394-398		Dining Room. Looking up secondary (brick) lining of chimney	3	7.2
	399-408		Dining Room. Removal of 'modern' fireplace	3	7.2
<b>20 THE CHANONRY</b>		<b>21 NOVEMBER</b>	<b>DINING ROOM INTERIOR</b>		

File number	Photo number	Date taken	Content	Illus	Part 1 Report Section
<b>10</b>		<b>2013</b>			
	409-413		Dining Room. Looking out to E at W5 from inside 16 <sup>th</sup> century fireplace. Lower blocking 'seat' not removed.	3	7.2
	414-421		Dining Room. Looking out to E at W5 from inside 16 <sup>th</sup> century fireplace. 'Seat' removed. Lower ruler on original floor level. The E arch of 16 <sup>th</sup> century fireplace stands between vertical ruler and electric switch	3	7.2
	422-425		Dining Room. Looking W inside fireplace. Possible bread oven F18 (RHS with horizontal ruler). The break-through is the back of alcove F16	3	7.2
	426		Dining Room/pend passage. Looking through alcove F16, E through 16 <sup>th</sup> century fireplace to W5	3	7.2
	427		Dining room/pend passage. Alcove F16 with pend visible on RHS	3	7.2
	428-430		Dining Room. Fireplace almost fully stripped of plaster	3	7.2
	431-432		Dining Room. Looking out through W5	3	7.2
	433-435		Dining Room. Looking up inside fireplace at re-used timbers over W5 break-through but stone lintels above E side of 16 <sup>th</sup> century fireplace	3	7.2
	436-437		Dining Room. Looking up inside fireplace at W side. Part of secondary alcove F16 visible at LHS.	3	7.2
<b>20 THE CHANONRY 11</b>		<b>22 JANUARY 2014</b>	<b>PEND</b>		
	438-439		Pend. S wall. Blocked doorway D7 as revealed when plaster removed. Looking E to garden arch of pend.	2	7.1
	440		Pend. S wall. Blocked doorway D7 as revealed when plaster removed. Looking W. D6 in background	2	7.1
	441-443		Pend. S wall. Graffiti on blocked door D7	2	7.1
<b>20 THE CHANONRY</b>		<b>22 JANUARY</b>	<b>PEND</b>		

File number	Photo number	Date taken	Content	Illus	Part 1 Report Section
<b>11A</b>		<b>2014</b>			
	444-453		Pend S wall. Blocked door D7. Close ups of stones and graffiti.	2	7.1
	454		Pend S wall. Blocked door D7. Detail blocking and threshold of D7	2	7.1
	455-457		Pend S wall. Blocked door D7. Looking E to garden arch of pend	2	7.1
	458		Pend S wall. Blocked door D7. Recording in progress.	2	7.1
<b>20 THE CHANONRY 12A</b>		<b>11 FEBRUARY 2014</b>	<b>INTERIOR. PEND, DINING ROOM, KITCHEN</b>		
	459		Pend D7 after outer blocking removed. Lower iron pivot. RHS door D7.	2, Part 1  Illus 38 :A	7.1
	460-461		Pend D7 after outer blocking removed. Receiver for bolt/bar. RHS door D7.	Part 1: Illus 38: D	7.1
	462		Pend D7 after outer blocking removed. Upper iron pivot. RHS door D7.	Part 1 Illus 38 :A	7.1
	463		Pend D7 after outer blocking removed. Receiver for bolt/bar. LHS door D7.	Part 1 Illus 38 :B	7.1
	464-465		Pend D7 after outer blocking removed. Receiver for bolt/bar. RHS door D7.	Part 1 Illus 38:C	7.1
	466-467		Pend D7 after outer blocking removed. Looking up within arch of D7, through S wall of pend	2	7.1
	468-469		Pend D7 after outer blocking removed. This inner blocking is retained 2014	2	7.1
	470		Pend D7 after outer blocking removed. Detail of blocking and E side (RHS)	2	7.1
	471		Pend D7 after outer blocking removed. Detail of blocking and W side (LHS)	2	7.1
	472-478		Dining Room. Masons working on fireplace and details of stones after	3	7.2

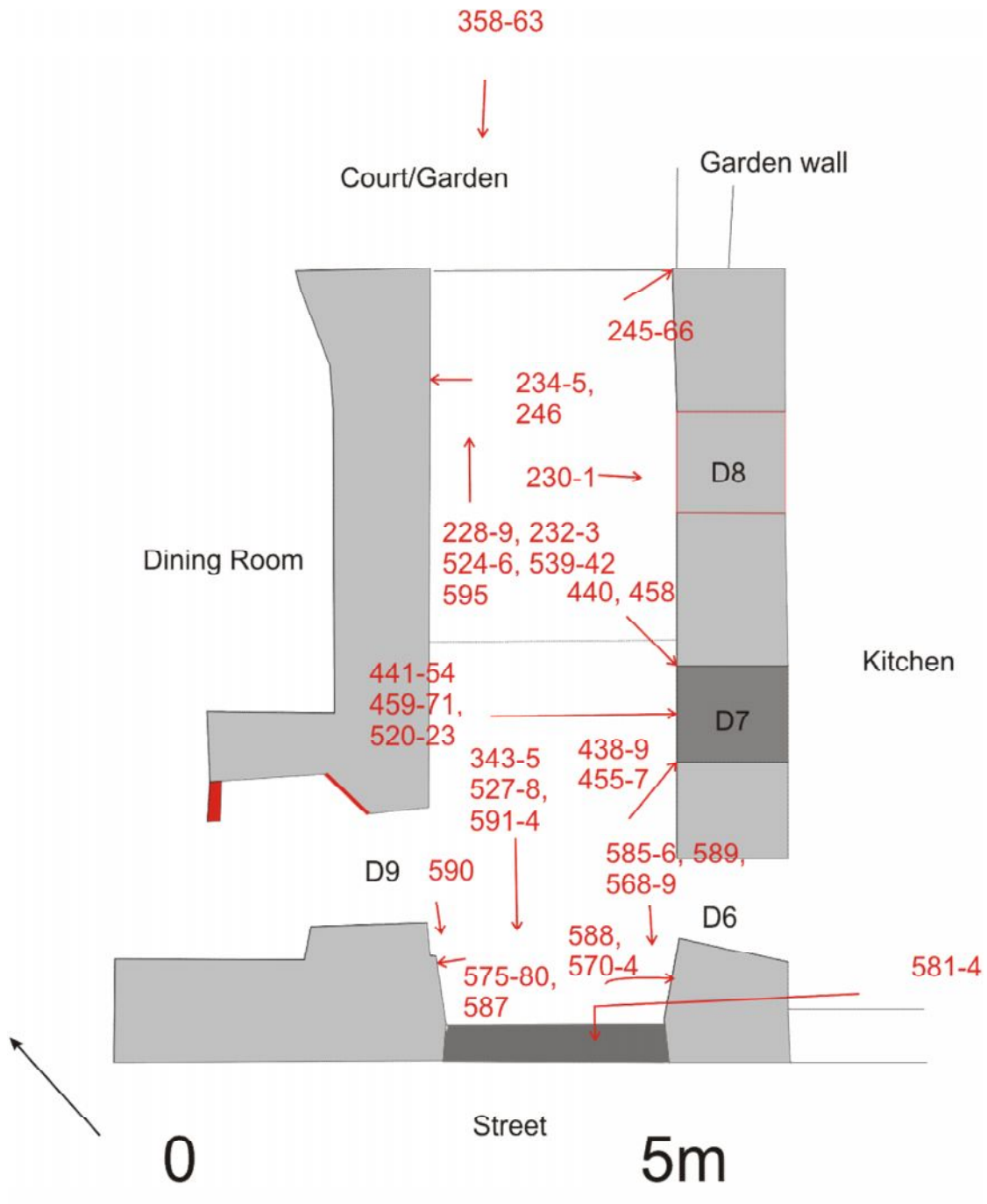
File number	Photo number	Date taken	Content	Illus	Part 1 Report Section
			removal of electric switch etc		
	479		Dining Room. Detail of secondary joist for floor above, cut into top of 16 <sup>th</sup> century fireplace	3	7.2
	480		Dining Room. N wall. Outer side of steps up to front door (D4) visible after removal of plaster. Looking E	3	7.2
	481		Dining Room. N wall. Outer side of steps up to front door (D4) visible after removal of plaster. Looking W	3	7.2
	482-483		Dining Room. N wall. Outer side of steps up to front door (D4) visible after removal of plaster. Looking E	3	7.2
	484		Other side of Dining Room N wall. The steps looking up from D1 to D4. Dining room is at LHS at base of steps	3	7.2
	485		Dining Room. Detail, after pointing, of voussoir stones in E wall to RHS of W6	3	7.2
	486		Dining Room. E wall. Location of photo 485	3	7.2
	487-488		Kitchen. N wall. Behind the lining timbers the stones of relieving arch of blocked pend door D7 are just visible behind and above red first aid box. (D6 to LHS)	4	7.3
	489		Main W range ground floor passage. D2 from inside with relieving arch. To RHS of door wall has difference in stonework on line of S wall of tower	1, 5	6.4
	490		Main W range ground floor passage. Detail of wall to RHS of D2	1, 5	6.4
	491		Main W range ground floor passage. Detail of wall to LHS of D2	1, 5	6.4
	492		Main W range ground floor passage. Looking S from D2 to Dining Room	1, 5	6.4
<b>20 THE CHANONRY 12</b>		<b>11 FEBRUARY 2014</b>	<b>DINING ROOM</b>		
	493-497		Dining Room. Fireplace LHS after cleaning	3	7.2

File number	Photo number	Date taken	Content	Illus	Part 1 Report Section
	498-499		Dining Room. Fireplace LHS after cleaning Oblique look , looking SE. W5 in background is temporarily blocked with wood	3	7.2
	500-502		Dining Room. N wall. Outer side of steps up to front door (D4) visible after removal of plaster. Looking E	3	7.2
<b>20 THE CHANONRY 13</b>		<b>26<sup>TH</sup> FEBRUARY 2014</b>	<b>DINING ROOM AND PEND. CLEAR SHOTS WITHOUT BUILDING MATERIALS</b>		
	503-506		Dining Room. 16 <sup>th</sup> century fireplace fully cleaned	3	7.2
	507		Dining Room. N wall. Outer side of steps up to front door (D4) visible after removal of plaster. Looking E	3	7.2
	508-510		Dining Room. E wall and W6	3	7.2
	511-513		Dining Room. Junction between E wall and fireplace	3	7.2
	514-515		Dining Room/pend passage. Looking S from Dining Room, past alcove F16, into pend	3	7.2
	516-517		Dining Room/pend passage. Alcove F16 as reconstructed 2014.	3	7.2
	518		Main W range ground floor passage. Relieving arch inside W8.	1, 5	6.4
	519		Main W range ground floor passage. Relieving arch inside W8. Looking S to Dining Room. Fireplace just visible in background	1, 5	6.4
	520		Pend. Blocked door D7 as restored. New door D8 on LHS. D6 on RHS	2	7.1
	521-523		Pend. Blocked door D7 as restored.	2	7.1
	524-526		Pend as restored looking towards E (garden ) arch with temporary blocking	2	7.1
	527-528		Pend as restored looking towards W to street and W20	2	7.1
<b>20 THE CHANONRY 13A</b>		<b>26<sup>TH</sup> FEBRUARY 2014</b>	<b>DINING ROOM AND PEND. CLEAR SHOTS WITHOUT BUILDING MATERIALS</b>		

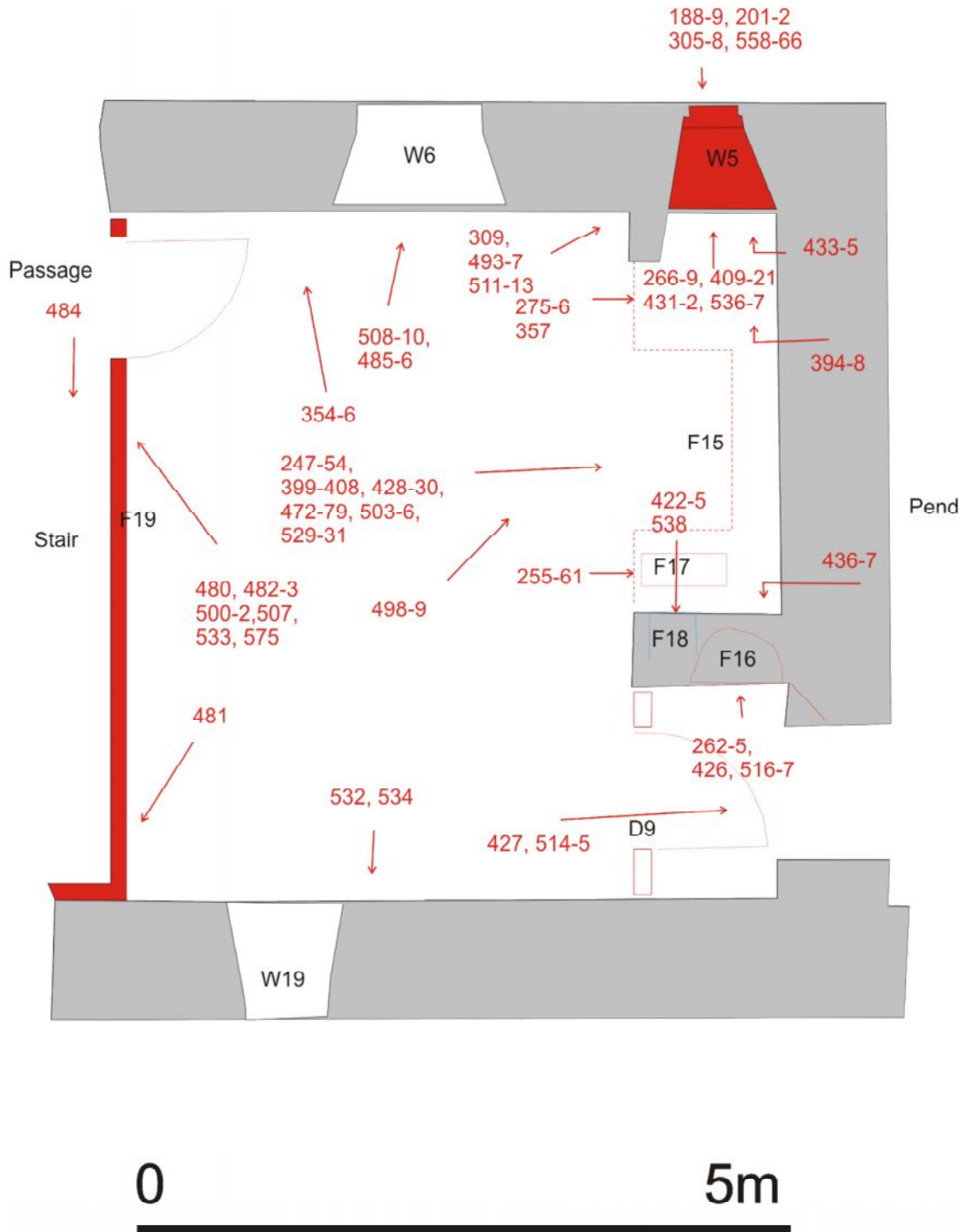


File number	Photo number	Date taken	Content	Illus	Part 1 Report Section
	529-531		Dining Room. Fireplace fully cleaned	3	7.2
	532		Dining Room. W wall and W19	3	7.2
	533		Dining Room. N wall and outer side of steps up to front door (D4) visible after removal of plaster.	3	7.2
	534		Dining Room. W wall and W19	3	7.2
	535		Dining Room. N wall and outer side of steps up to front door (D4) visible after removal of plaster.	3	7.2
	536-537		Dining Room. Inside W5 alcove as restored	3	7.2
	538		Dining Room. Inside 16 <sup>th</sup> century fireplace. W edge of possible bread oven F18 and back of alcove F16 as restored	3	7.2
	539-542		Pend. As restored, looking E to garden	2	7.1
	543-545		Pend. As restored. Looking W to street.	2	7.1
	546		E elevation. W6 as restored	5	6.4
	547		E elevation. W8 as restored	5	6.4
	548		N gable of tower. W15 detail of blocking	6	6.5
	549		N gable of tower. W14 detail	6	6.5
	550		W elevation. W16. Detail	7	6.6
	551		W elevation. W17 detail	7	6.6
	552		W elevation. W18 detail	7	6.6
	553-555		W elevation D4 detail	7	6.6
	556		W elevation W19 detail	7	6.6
	557		W elevation. Looking NE along The Chanonry	7	6.6
<b>20 THE CHANONRY 14</b>		<b>21<sup>ST</sup> MARCH 2014</b>	<b>INSIDE ARCH OF W PEND ARCH</b>		
	568		Mason's mark inside to S side of pend W arch	2	7.1

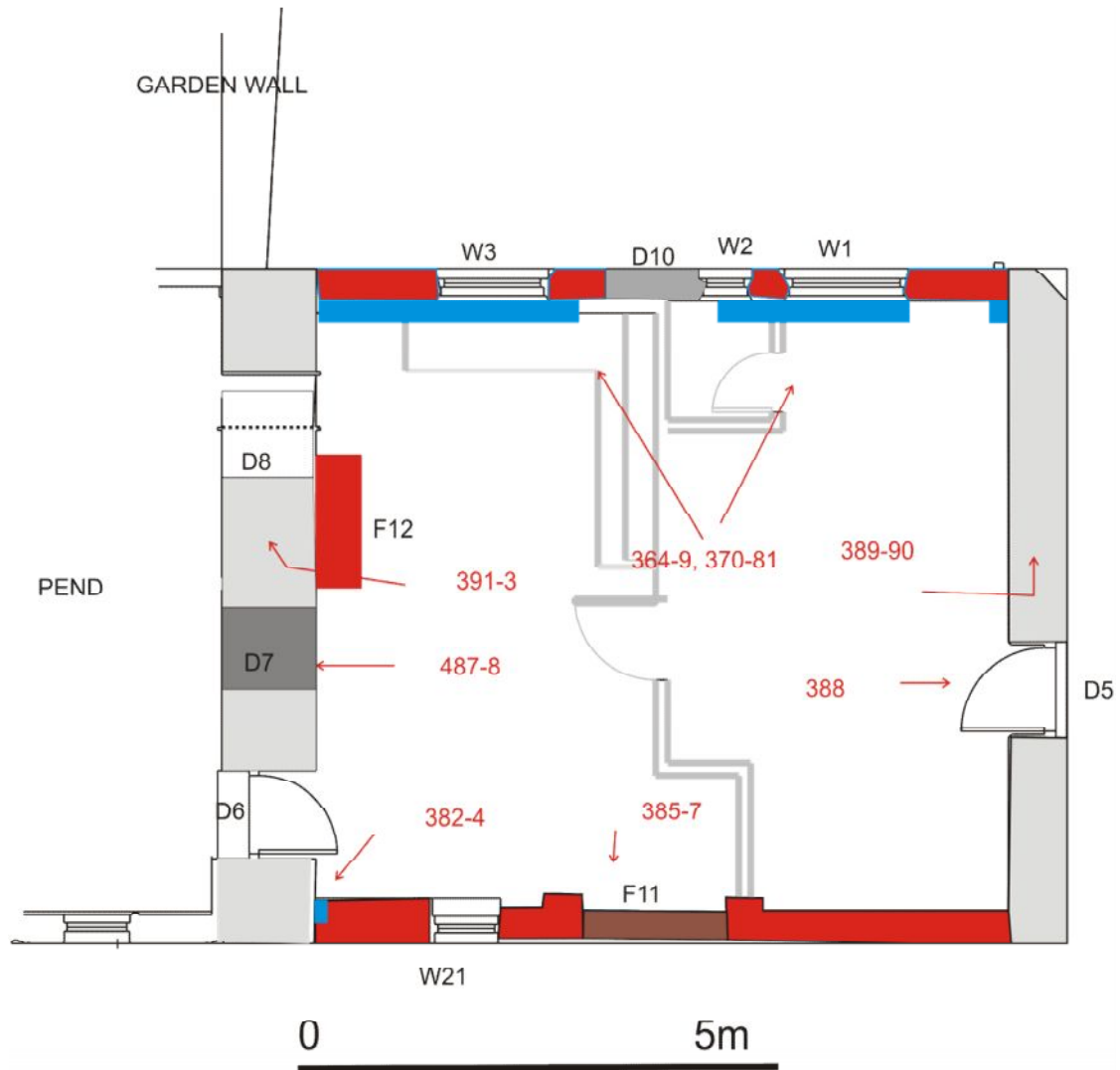
File number	Photo number	Date taken	Content	Illus	Part 1 Report Section
	569		Mason's mark inside to S side of pend W arch	2	7.1
	570-71		Graffiti? 77 inside to S side of pend W arch	2	7.1
	572		Probably natural marks/ possibly knife marks. Inside to S side of pend W arch	2	7.1
	573-74		Upper iron gate pivot on inside to S side of pend W arch	2	7.1
	575		Possibly secondary fitting in outer (E) edge of N side of inner arch of W pend arch	2	7.1
	576-80		Details of gate closure fittings on N side of inner arch of pend W arch	2	7.1
	581-83		Mason's mark on inner (E) face of stone at top of arch in inner arch of pend W arch	2	7.1
	584		Close-up of shell used as filler between arch stones in inner arch of W pend arch	2	7.1
	585-86		Inner (N) face of S side of arch	2	7.1
	587		Inner (S) face of N side of arch	2	7.1
	588		Inner (N) face of S side of arch	2	7.1
	589		E face of S side of arch	2	7.1
	590		E face of N side of arch	2	7.1
	591-594		Inner face of W pend arch after cleaning	2	7.1
	595		Inner face of E pend arch after cleaning	2	7.1
<b>20 THE CHANONRY 15</b>					
	596-599		Drain trench on street facade after removal of drain sections. 14/4/2014		8.3



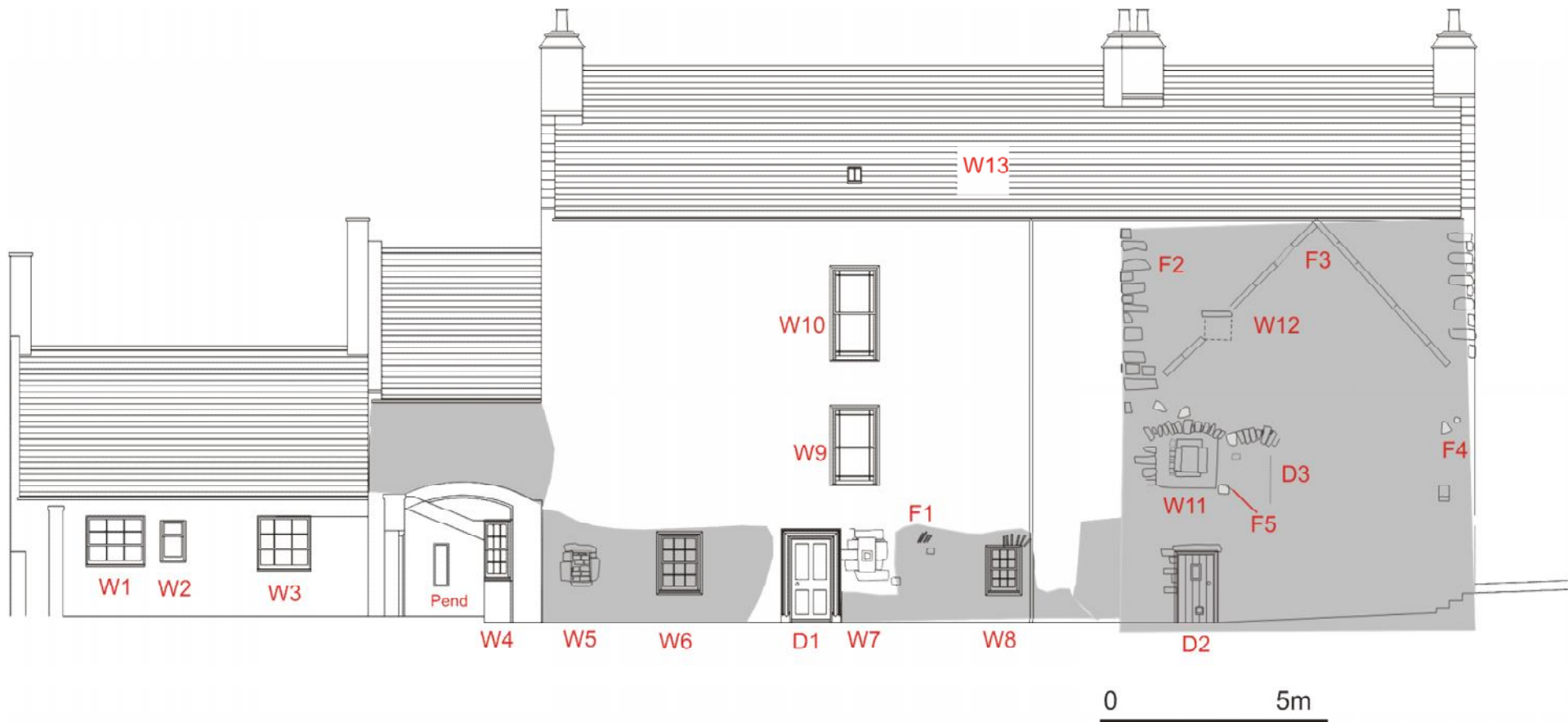
Illus 2 Detail of Pend with photo numbers in red. (Report Part 1, Section: 7.1)



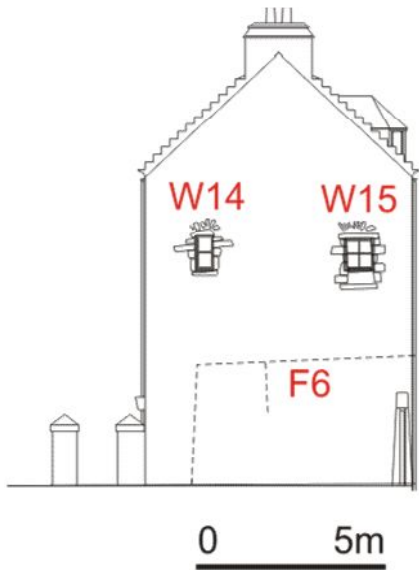
Illus 3 Detail of Dining Room with photo numbers in red. (Report Part 1, Section: 7.2)



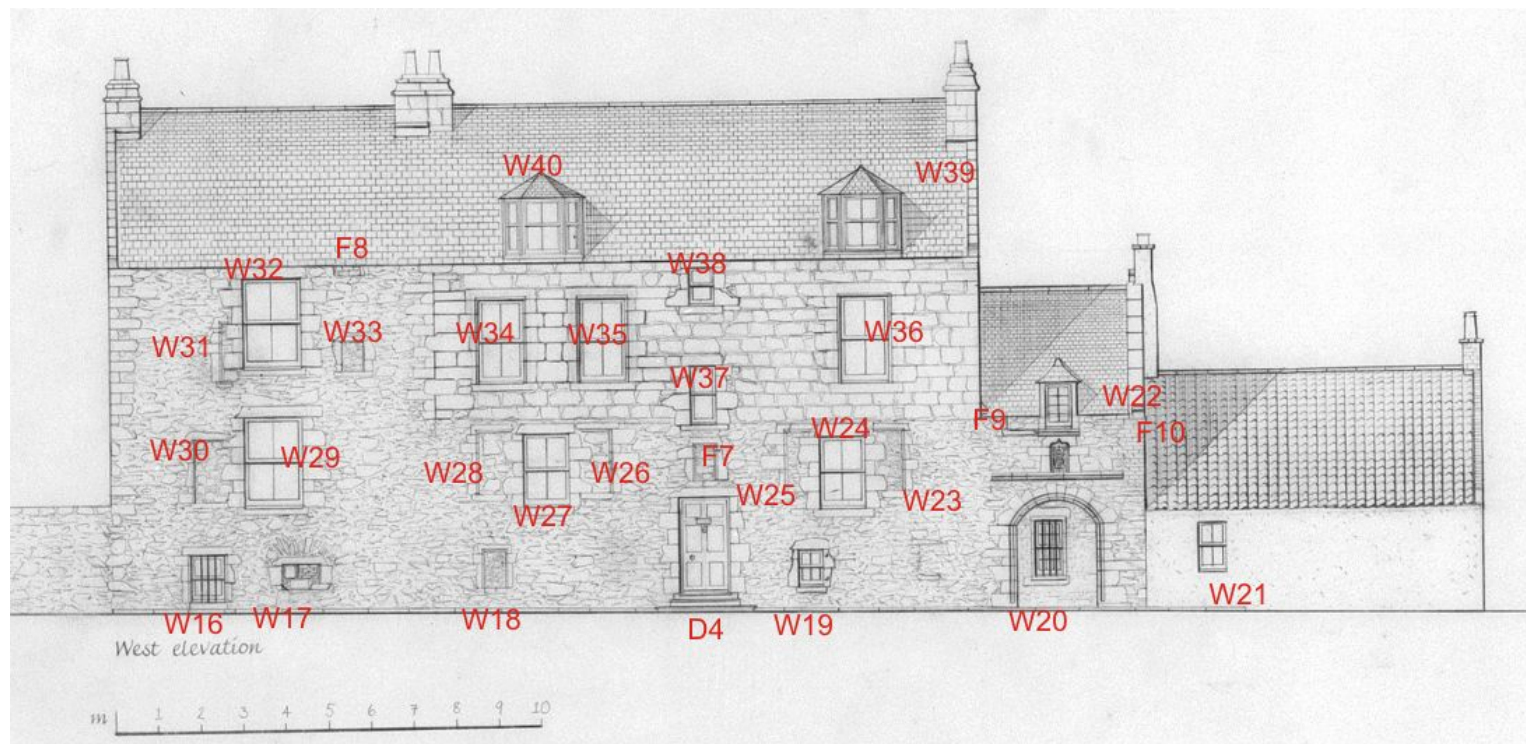
**Illus 4 Detail of kitchen with photo numbers in red. (Report Part 1, Section: 7.3)**



Illus 5 E (Garden) elevation (Report Part 1, Section: 6.4)

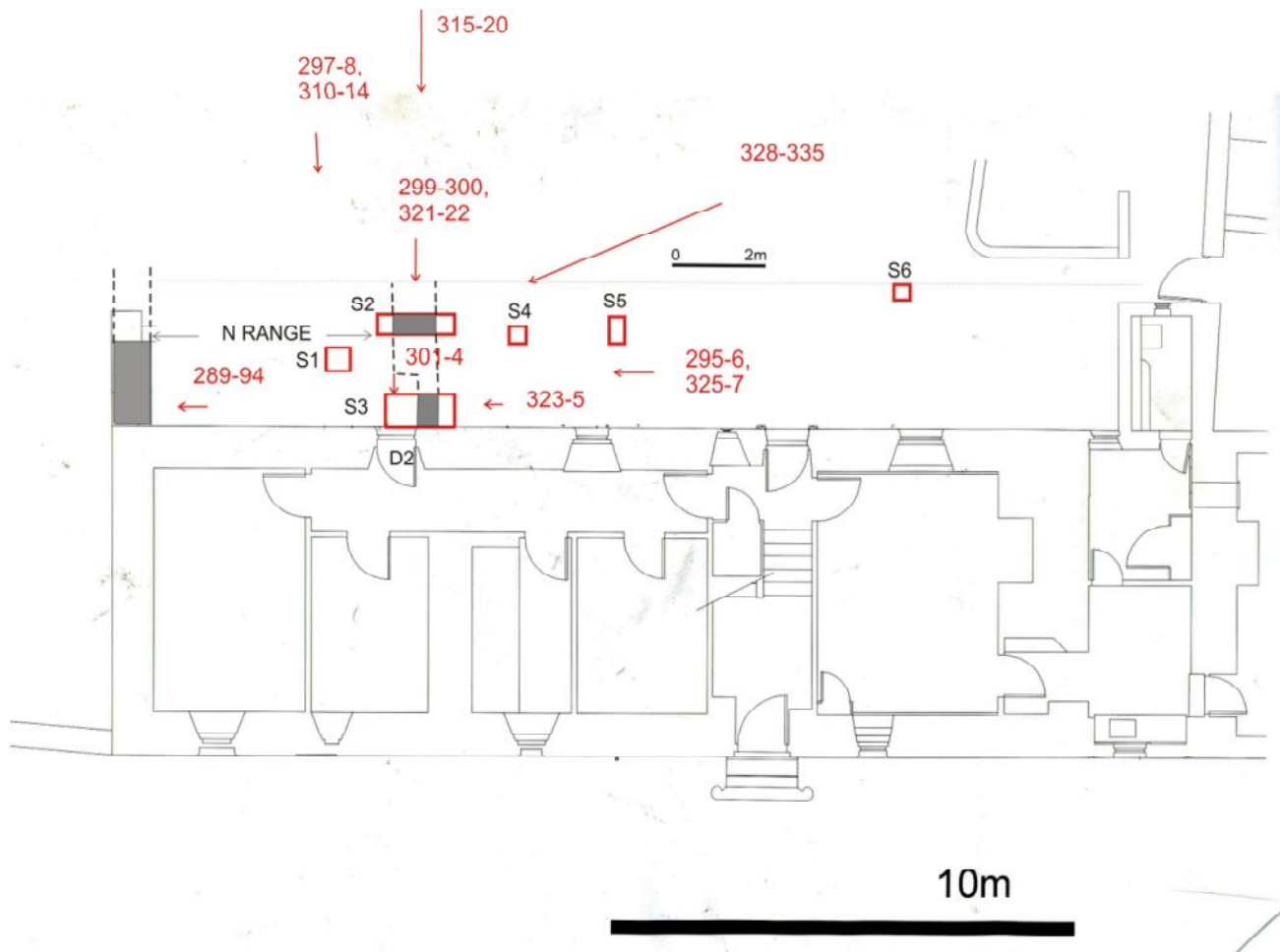


**Illus 6 N (Tower) gable (Report Part 1, Section: 6.5)**



Illus 7 W (Street) elevation adapted from RCAHMS drawing (SC 354487). © Crown Copyright: RCAHMS. Licensor [www.rcahms.gov.uk](http://www.rcahms.gov.uk) (Report Part 1, Section: 6.6)





Illus 8 Detail of sondages with photo numbers in red. (Report Part 1, Section: 8.2)