

**NETHERFIELD
OLD CHAPEL ROAD
INVERURIE
ABERDEENSHIRE**



Standing Building Survey

Carried out 15th August 2015

by

Murray Archaeological Services Ltd



Report No: MAS 2015-28

by

H K Murray and J C Murray

H K Murray BA, PhD, MCI(A), FSA Scot

J C Murray BA, MCI(A), FSA Scot, FMA

Hill of Belnagoak, Methlick, Ellon, Aberdeenshire AB41 7JN

Telephone: (01651) 806394 e-mail: cmurray@btinternet.com

**NETHERFIELD
OLD CHAPEL ROAD
INVERURIE
ABERDEENSHIRE**

- Standing Building Survey -

1. Background
 - 1.1 A standing building survey was required for a small steading at Netherfield, Old Chapel Road, Inverurie, prior to its demolition and the construction of a new dwelling.
 - 1.2 The archaeological condition was applied in the context of planning legislation (PAN 2/2011, SPP, SHEP), which states that it is necessary for developers to arrange for archaeological work to take place prior to development, in appropriate circumstances. Planning Application Number: APP/2015/1744
 - 1.3 A Level 1 Standing Building Survey was required which includes measured plans and elevations, a written account of the building's plan, form, function, age and development sequence in addition to a photographic survey of the interior and exterior of the building.
 - 1.4 Murray Archaeological Services Ltd was commissioned to undertake the work by William Lippe Architects Ltd on behalf of their clients. The site element of the survey was completed on the 15th August 2015.
2. Desk-top survey
 - 2.1 A search was carried out in the Aberdeenshire Sites and Monuments Record, Archaeology Service, Aberdeenshire Council and in the Sites and Monuments

Records of the Royal Commission for Ancient and Historic Monuments in Scotland (RCAHMS) through Canmore and Pastmap.

2.2 The 1st and subsequent edition Ordnance Survey maps were consulted.

3. The Site

3.1 The site lies on the N side of Old Chapel Road, Inverurie.

Parish: Inverurie

NGR NJ 7645 2214 GPS: 376455,822141

RCAHMS No: None



Illus 1 Site location. Courtesy of William Lippe Architects Ltd. Site outlined in red. Steading shown by arrow.



Illus 2 View of buildings looking W. The steading is on RHS with stone gable.

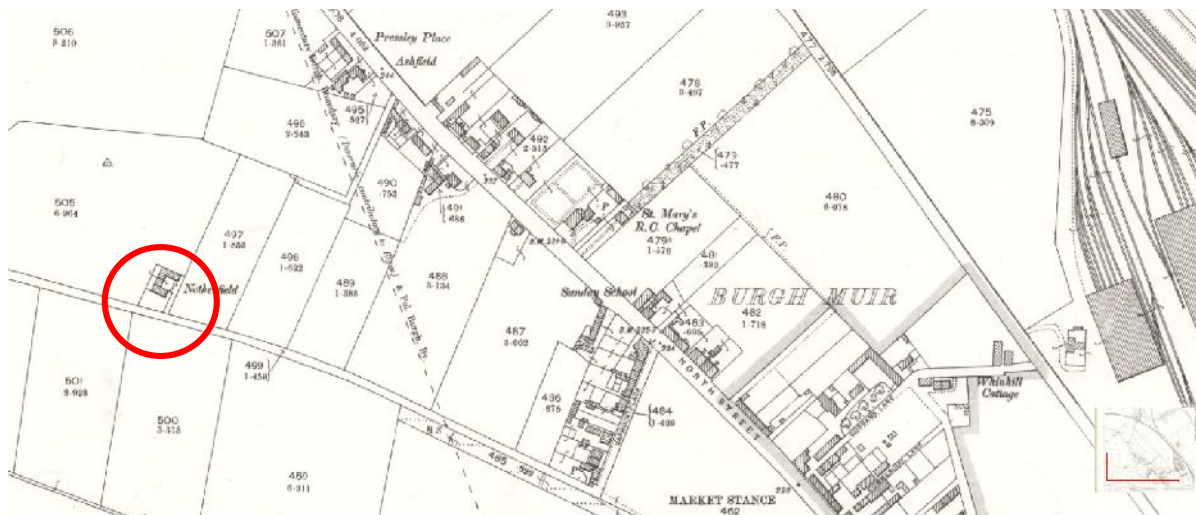
4. Documentary evidence

4.1 1st edition Ordnance Survey 25"/mile Aberdeen sheet LIV.4 (Inverury)

1867 (published 1869 does not show any buildings at Netherfield.

4.2 The 2nd edition 25"/mile Ordnance Survey of 1899 (published 1900.

Aberdeenshire 054.04) shows Netherfield for the first time, standing among fields beside Old Chapel Road, at some distance from the nearest houses. The buildings are shown as a U-plan, on the same footprint as today, with an L-shaped steading abutting the house.



Illus 3 Detail of the 2nd edition 25"/mile Ordnance Survey of 1899 (published 1900. Aberdeenshire sheet 054.04) www.nls.ac.uk Red circle indicates the building.

4.3 The 25"/mile Ordnance Survey of 1924 (published 1926. Aberdeenshire 054.04) shows no change of plan.



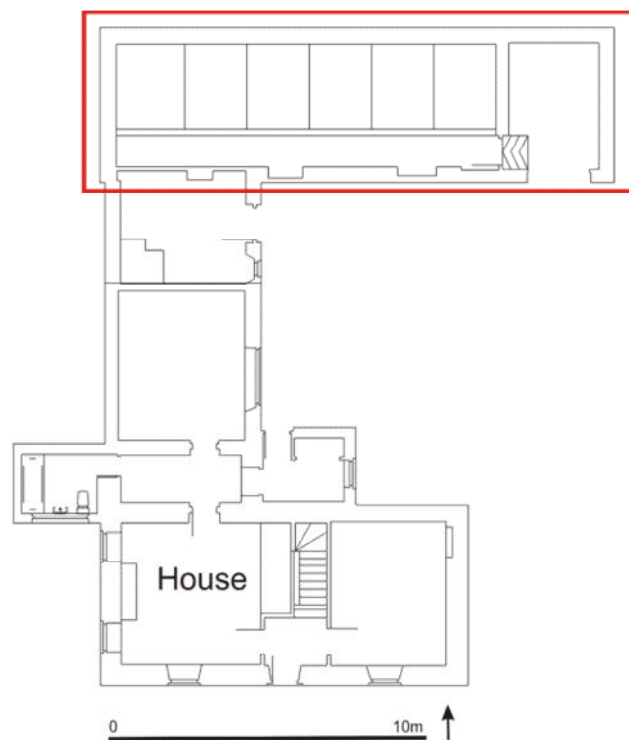
Illus 4 Detail of 25"/mile Ordnance Survey of 1924 (published 1926. Aberdeenshire sheet 054.04) www.nls.ac.uk Red circle indicates the building.

5 Methodology

5.1 The plan (Illus 5, 8) and elevations (Illus 17) have been annotated, where necessary, to show details and to indicate differences in the building materials which may help in understanding the development and history of the building.

5.2.1 The areas recorded were photographed. The full set of photographs will be supplied for the archive and an annotated plan in the present report (Illus 16) indicates the position of each.

6 The Buildings



Illus 5 Plan showing the steading (red outline) in relation to the buildings to be retained. Adapted from plan courtesy of William Lippe Architects Ltd.

6.1 THE HOUSE

The house, which is not part of the development, was not part of the survey. However a short description is of value in understanding the possible role of the associated steading.

The walls are of rubble stone, exposed on the front (S) wall to show sandstone rybats at the corners and at the doors and ground floor windows where there are tooled

margins. A projecting narrow hood or pediment over the door is supported by moulded corbels, giving a fairly urban appearance.

The roof line has been changed by the projecting dormer extension but good rectangular stone chimneys and the skews with fairly elegant moulding at the skewputts survive.

To the rear, an extension of the house (Illus 7) appears to have been built on the footprint of part of the range of buildings shown on the 1899 OS map.

A rare survival, the pump shown on the 1899 OS map, is still in situ to the E of the house (Illus 15).

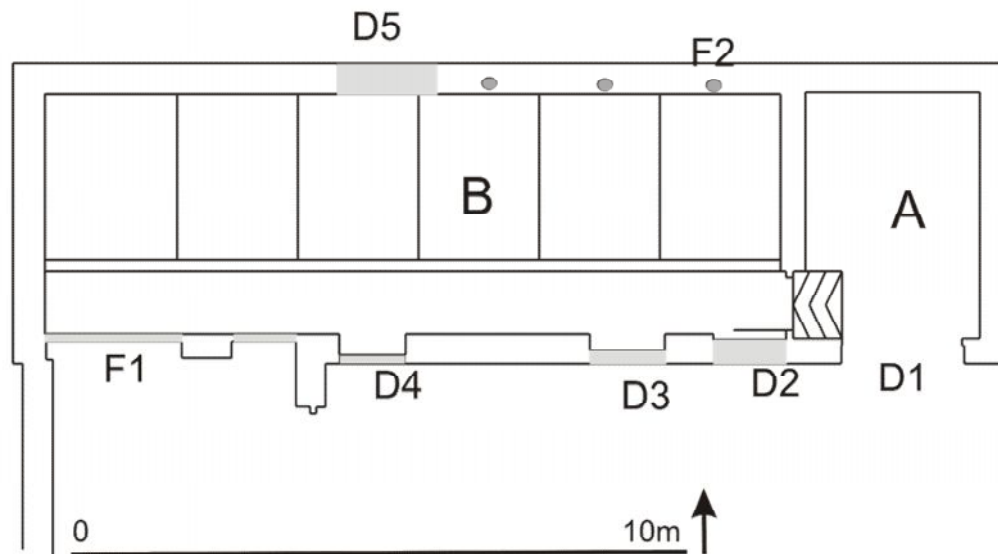


Illus 6 House and steading from Old Chapel Road.



Illus 7 Looking W at extension of house into line of former steading. The steading in the survey is on RHS

6.2 THE STEADING



Illus 8 Detailed plan of the steading. Adapted from plan courtesy of William Lippe Architects Ltd.

Roof Slate with ceramic ridge. Dressed granite skewes and ball finials at each gable.

3 roof lights to N, 2 roof lights to S.

Wall Rubble stone. Only exposed on E gable. Remainder is harled, covering the blockings that are visible in the interior.

Doors and windows

D1 W: 2m H: 2.2m

D2 W: 1.17m (possibly more as E side obscured) H: 1.88m (to raised floor of room B). Timber lintel. Blocked externally.

D3 W: 1.22m H: 1.8m (to raised floor of room B). External stone lintel, wooden internal. Both visible above concrete blocking.

D4 W: 1.18m H: 1.7m (to raised floor of room B). External stone lintel, wooden internal. Both visible above concrete blocking.

D5 Concrete blocking visible on inside of N wall. W: 1.60m. H: not measurable. Timber lintel visible.



Illus 9 E gable of steading showing ball finial

F1 2 concrete blockings W: 1.27m and 2.22m with stone column between. These appear to be blocked openings into the former W wing of the L-plan steading, now part of the house (and being retained).

Interior

Room A: Now a workshop/store. Probably originally a cart shed. Has loft above with vertical timber loft wall above the stone wall between rooms A and B. A projecting timber may have had some function as part of a hoist?



Illus 10 Looking E from room B towards room A. Shows base of the timber loft wall and position of projecting timber.



Illus 11 Detail of the timber loft wall and projecting timber.

Room B: Now used for miscellaneous storage. In the fairly recent past this had been used for pigs with 6 concrete pig stalls and a drain running along the outside of the stalls. A false ceiling had been inserted.

The original use of this area may have included 3 cattle pens or horse stalls as there were three air vents built into the N wall around sections of pipe. As they did not correspond to all the pig pens it is likely they are from an earlier use.

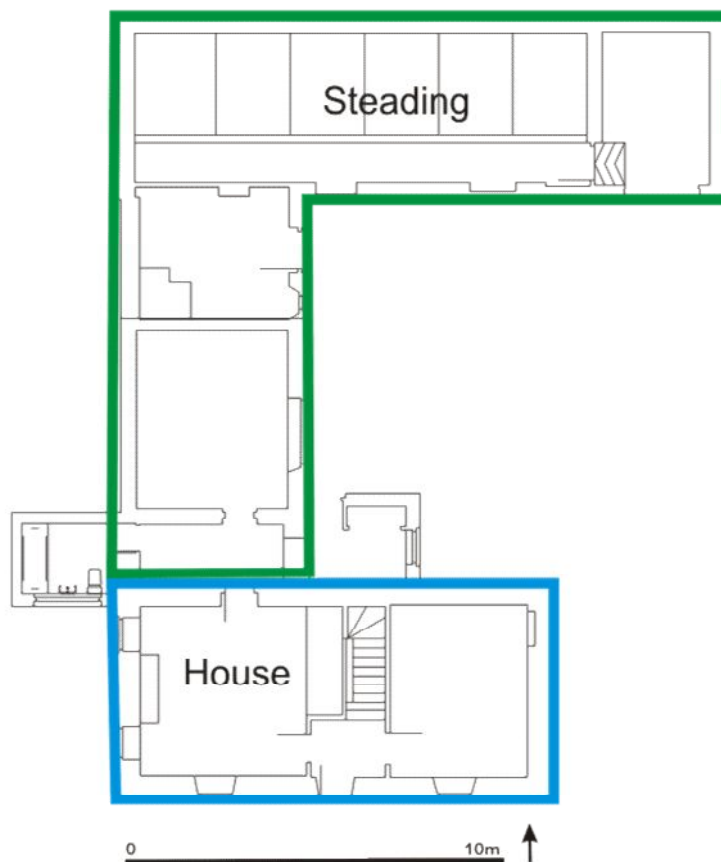


Illus 12 Looking W through room B showing raised concrete floor and pigs stalls.

6 Discussion

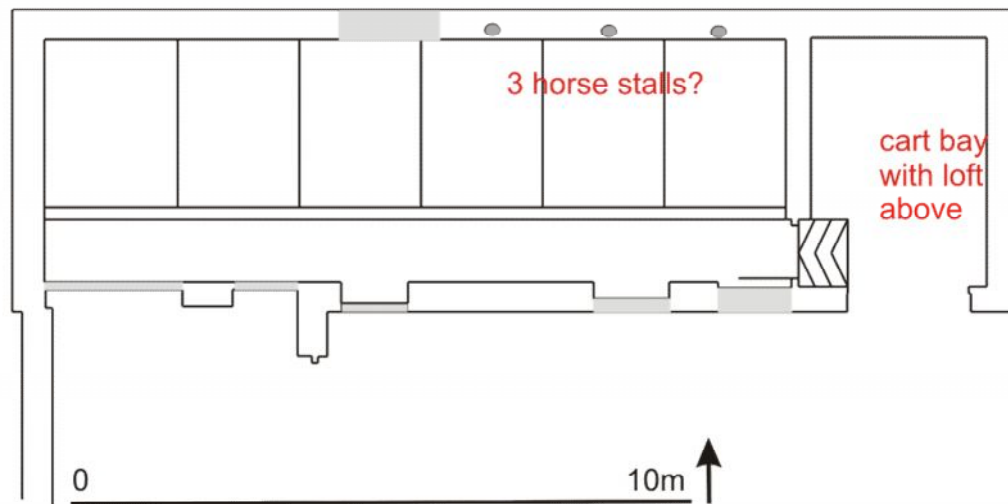
Netherfield was built between 1867 and 1899, lying in a small enclosed plot divided out of a larger field shown on the 1867 OS map. It was very near but not part of the town.

The basic footprint of L-plan steading and the house on the S side beside the road has been retained since it was built, although the W wing of the steading has been converted to part of the house and retains no original features.



Illus 13 Footprint of the buildings on the 1899 OS map marked on the present plan. Green= original steading. Blue=original house. Adapted from plan courtesy of William Lippe Architects Ltd.

The N wing of the steading, which is due for demolition, has been harled externally but internally the pattern of blockings suggest that in the 19th century the E end was a cart bay (Illus 14) with hay loft above. If the air vents are early this suggests that there might have been 3 stalls- possibly for horses. There is no surviving evidence for the function of the remainder of the steading.



Illus 14 Possible original functions. Adapted from plan courtesy of William Lippe Architects Ltd.

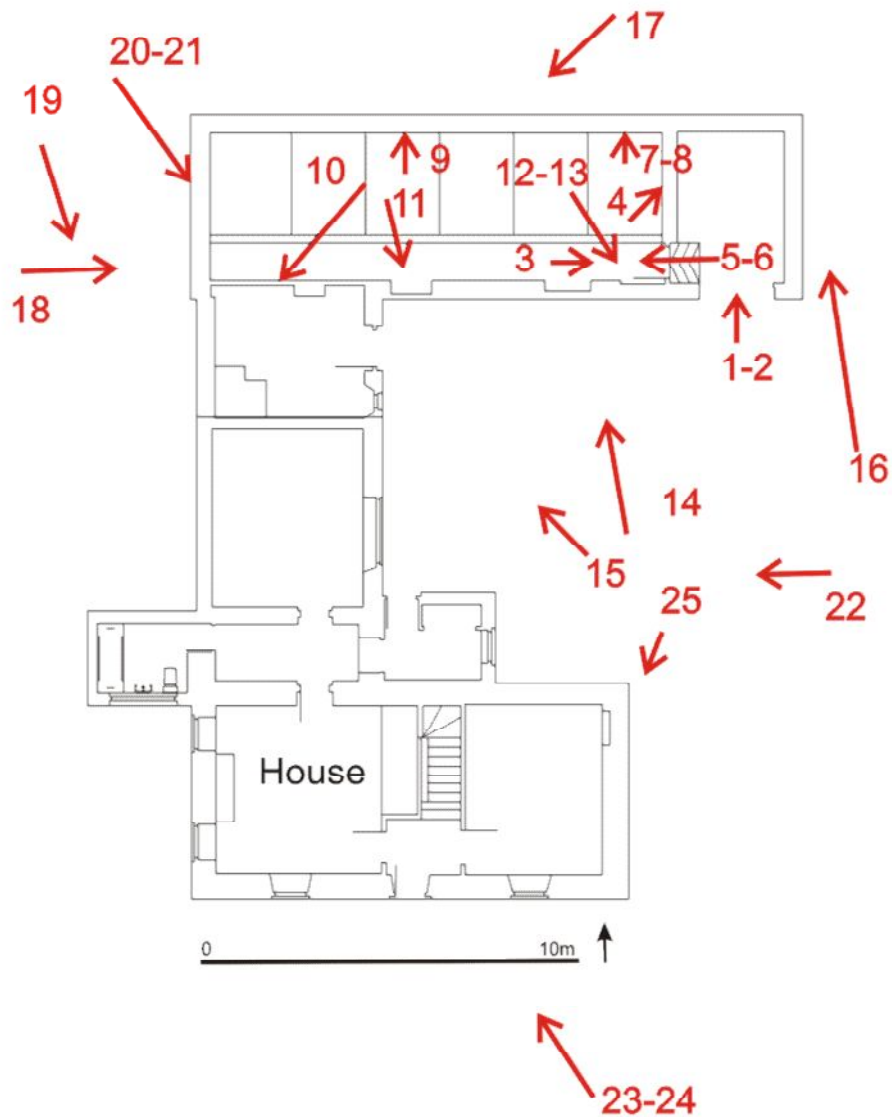
The fairly small scale of the steading in relation to the house is possibly significant. Both house and steading have some pretension, especially in regard to the details of the stonework. The house doorway in particular is of a sort more often seen in Aberdeenshire in urban houses than in farm houses. It is possible, although purely speculative, that this may have been the home and stables of a professional such as a doctor or vet, rather than a working farm.



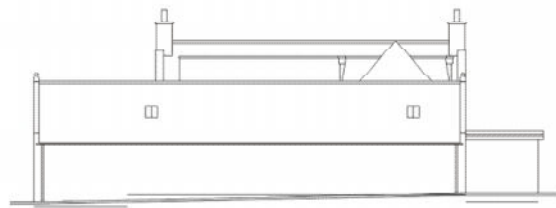
Illus 15 Pump in original position as shown on 1899 OS map.

Archive

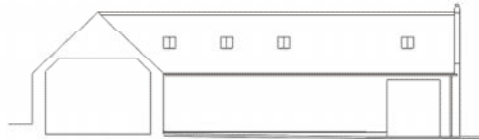
A full set of photographs with the photo location plan (Illus 16) will be supplied to the Aberdeenshire SMR and to the NMRS.



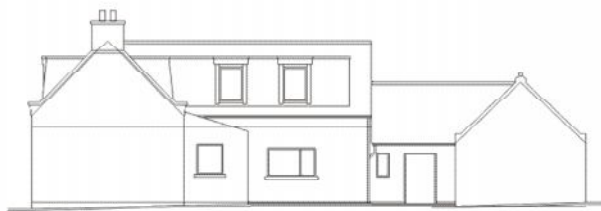
Illus 16 Position of photographs. Adapted from plan courtesy of William Lippe Architects Ltd.



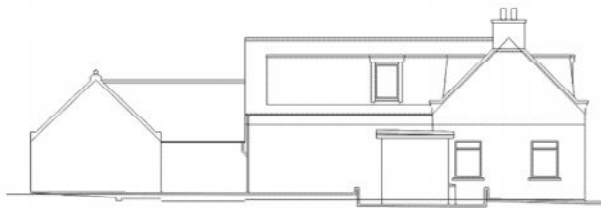
N elevation steading



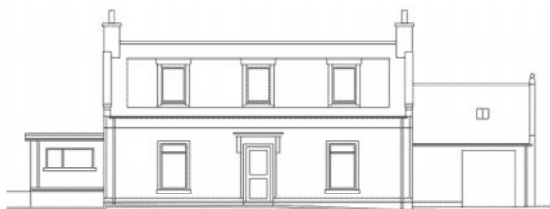
S elevation steading



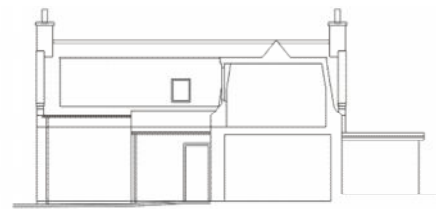
E elevation



W elevation



S elevation house, steading behind



N elevation house

0 10m

Illus 17 Elevations. Adapted from plan courtesy of William Lippe Architects Ltd.