

**WREATON
ABOYNE
ABERDEENSHIRE**

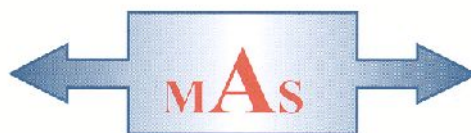


Standing Building Survey

Carried out 20th January 2016

by

Murray Archaeological Services Ltd



Report No: MAS 2016-07

by

H K Murray and J C Murray

H K Murray BA, PhD, MCIfA, FSA Scot

J C Murray BA, MCIfA, FSA Scot, FMA

Hill of Belnagoak, Methlick, Ellon, Aberdeenshire AB41 7JN

Telephone: (01651) 806394 e-mail: cmurray@btinternet.com

WREATON
ABOYNE
ABERDEENSHIRE

- Standing Building Survey -

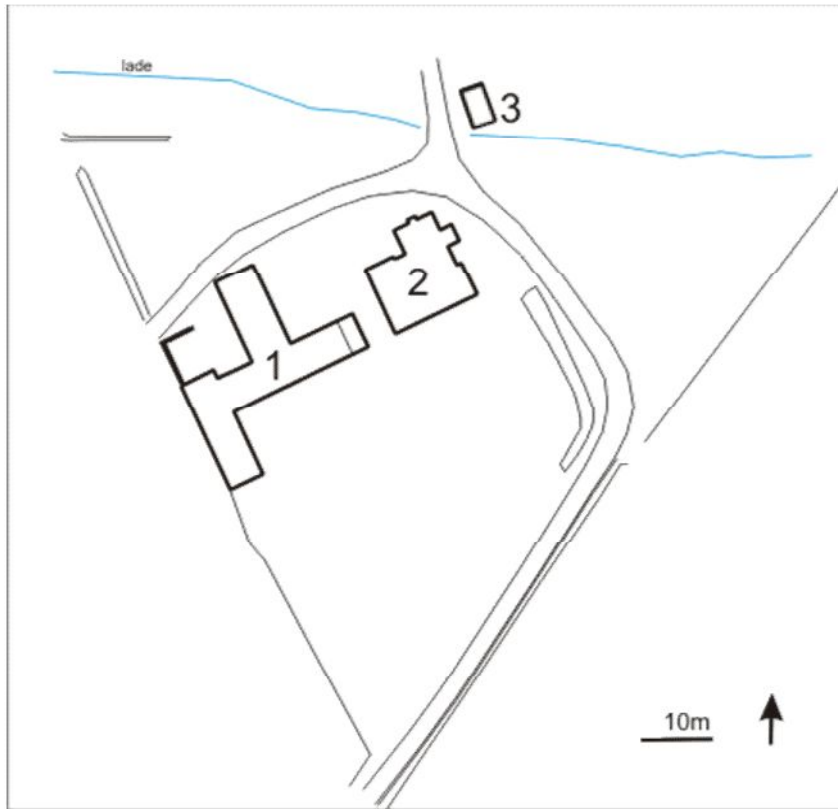
1. Background

- 1.1 A standing building survey was required for the farmhouse and steading at Wreaton Farm, Aboyne, Aberdeenshire, prior to the alteration of the steading and the demolition of the farmhouse.
- 1.2 The archaeological condition was applied in the context of planning legislation (PAN 2/2011, SPP, SHEP), which states that it is necessary for developers to arrange for archaeological work to take place prior to development, in appropriate circumstances. Planning Application Number: APP/2015/1877
- 1.3 A Level 1 Standing Building Survey was required which includes measured plans and elevations, a written account of the building's plan, form, function, age and development sequence in addition to a photographic survey of the interior and exterior of the building.
- 1.4 Murray Archaeological Services Ltd was commissioned to undertake the work by Acanthus Architects Ltd, on behalf of their clients Mr and Mrs Steven Plant. The site element of the survey was completed on the 20th January 2016.

2. Desk-top survey

- 2.1 A search was carried out in the Sites and Monuments Record, Archaeology Service, Aberdeenshire Council and in the Sites and Monuments Records of the Royal Commission for Ancient and Historic Monuments in Scotland (RCAHMS, now HES) through Canmore and Pastmap.
- 2.2 The 1st and 2nd edition Ordnance Survey maps were consulted.

- 2.3 Plans and elevations were supplied by Acanthus Architects Ltd and these have been annotated as necessary by MAS Ltd.



Illus 1 Simplified site plan. Adapted from plan courtesy of Acanthus Architects Ltd



Illus 2 Detail of OS map. Ordnance Survey © Crown copyright (2007) All rights reserved. Licence number (100049810).

3. The Site

3.1 The site lies c 500m to the N of the A93 Aberdeen to Braemar road and N of the River Dee. It is approximately 2km W of the centre of Aboyne. It is at c 180m OD and commands views over the Dee valley and W to the Cairngorms.

Parish: Aboyne and Glentanar NGR: NO 50085 99244

GPS behind steading: 350060, 799260

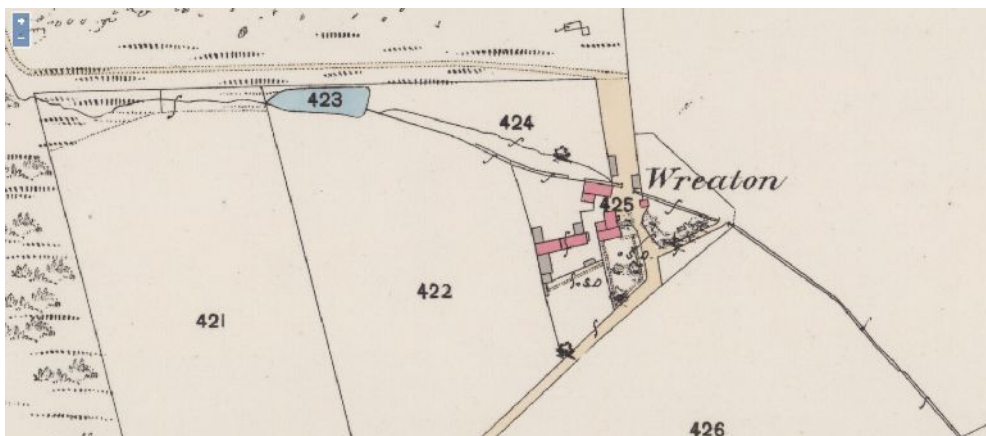
RCAHMS: NO59NW 101

3.2 At the time of the survey considerable work had been undertaken on the steading and building work was still in progress. As a result some details could not be viewed. Where possible these are supplemented by photographs taken by Acanthus Architects Ltd in January 2015, a year prior to the commissioning of the present survey in January 2016.

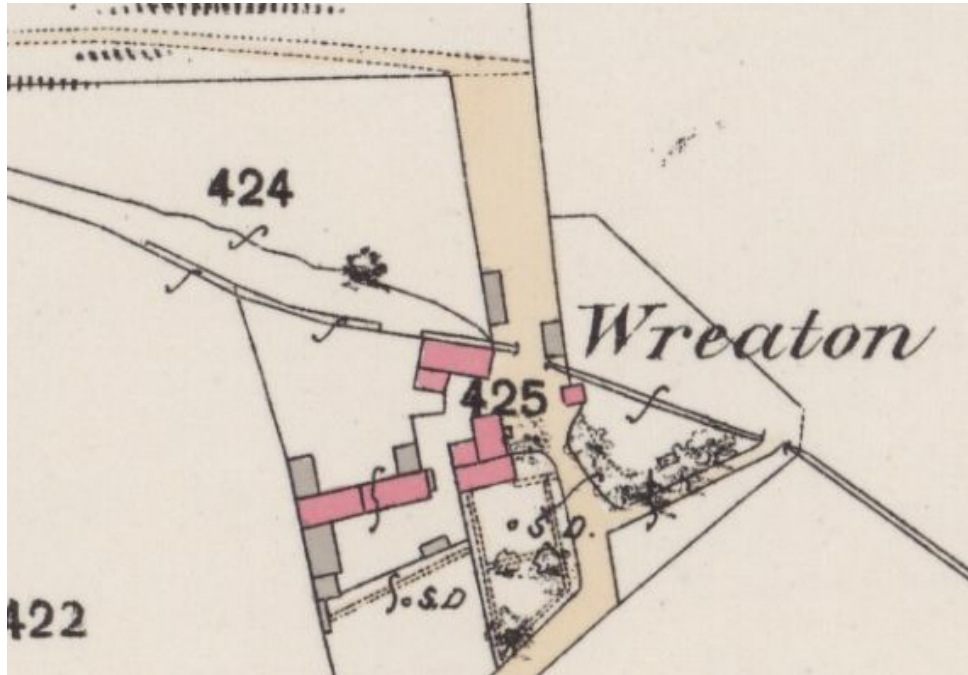
3.3 The slates had also been removed from the farmhouse roof, rendering it unsafe to enter.

4. Documentary evidence

4.1 **The 1st edition 25"/mile Ordnance Survey Aberdeen Sheet lxxxii.13 (Aboyne and Glentanner) of 1867 (published 1870)** shows the house and the S range in their present form. The W range is shown but is coloured grey indicating iron or wood. A small building attached to the N wall of the E end of the S range probably opened into the S range through the blocking noted on a 2015 photograph at this point. Building 3 is shown. There is a large freestanding mill on what is now waste ground, N of the steading beside the mill lade.



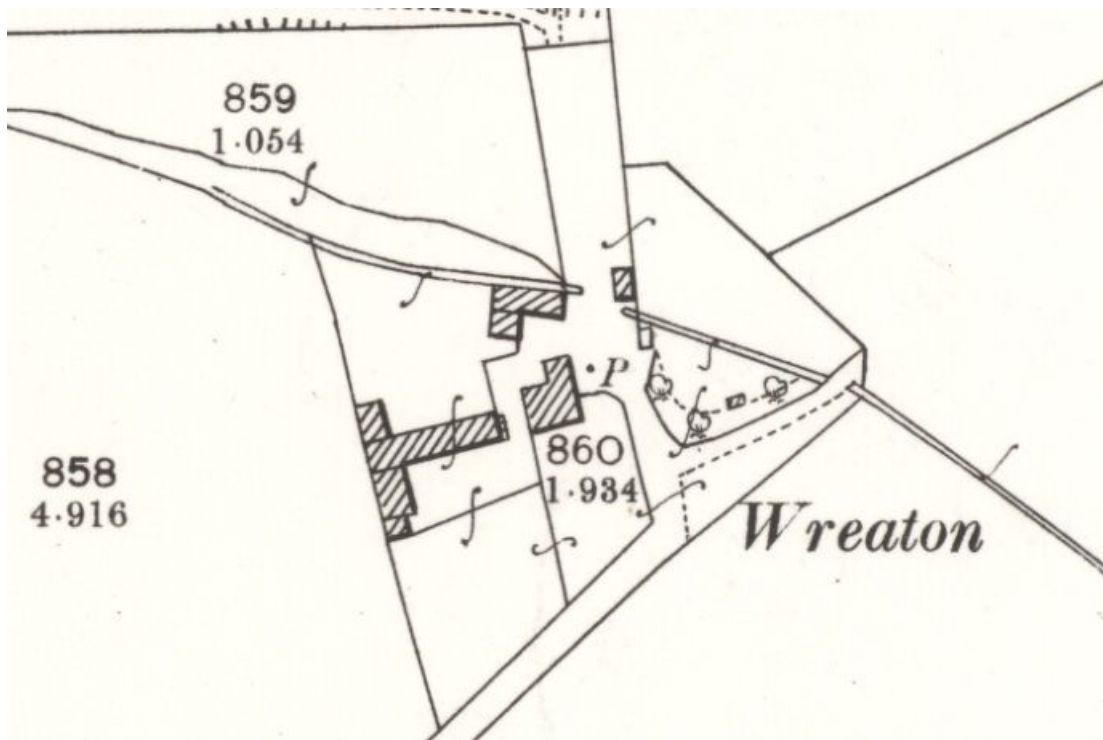
Illus 3 Detail of the 1st edition Ordnance Survey 25" map, surveyed in 1867 (published 1870) Aberdeen sheet lxxxii.13) www.nls.ac.uk . Wider view showing mill dam and lade.



Illus 4 Detail of the 1st edition Ordnance Survey 25" map, surveyed in 1867 (published 1870)
Aberdeen sheet lxxxii.13) www.nls.ac.uk

4.2 The 2nd edition 25"/mile Ordnance Survey of 1899 (published 1900).

Aberdeenshire Sheet 083.13) shows the removal of the small building at the N side of the S range and of several other small structures N of Building 3.

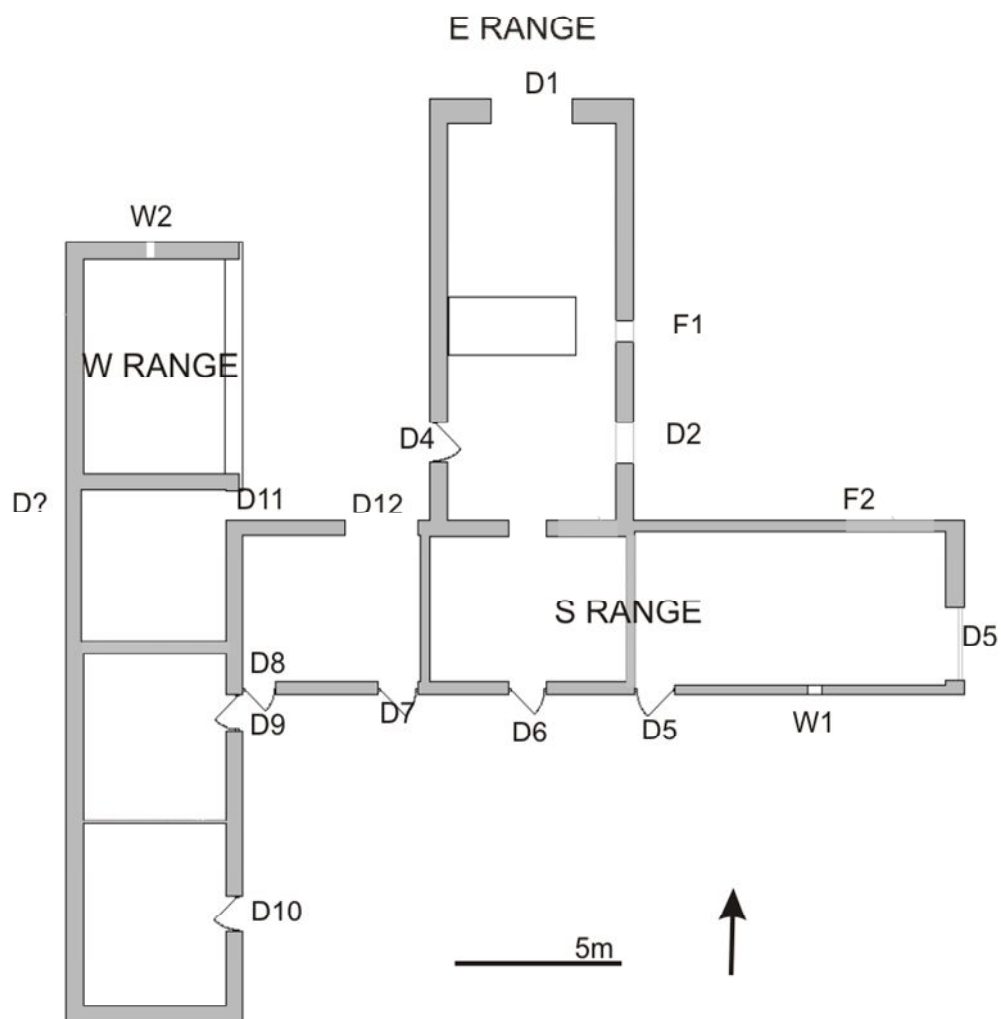


Illus 5 Detail of the 2nd edition 25"/mile Ordnance Survey of 1899 (published 1900). Aberdeenshire
Sheet 083.13 www.nls.ac.uk

5 Methodology

5.1 The ground plans (Illus 6, 26) and elevations (Illus 29, 32) have been annotated to show details which may help in understanding the development and history of the building.

5.2 The areas recorded were photographed. The full set of photographs will be supplied for the archive and annotated plans in the present report (Illus 33-35) indicate the position of each. Photographs taken by Acanthus Architects Ltd in January 2015 are not part of the archive but have been used in the report where they supplement the information available at the time of the survey.



Illus 6 Building 1: the steading. Based on plan courtesy of Acanthus Architects Ltd

6 The Buildings

Building 1: The steading. W range

Orientation Approx N/S

Dimensions 5.35 x 23.3m externally.

Present/recent use Stables

Original use Not known



Illus 7 Looking N along W wall of W range. January 2016



Illus 8 Looking N along W wall of W range. January 2015 (Photograph courtesy of Acanthus Architects Ltd)

Walls The S 16.4m were of squared rubble stones. The N 7m were of a smaller rubble stone. This end section had been rebuilt since the 2015 photographs, although the N gable is original.

Roof Slate with skylights and ceramic ridge (from photographs). Re-roofed at time of survey.

Interior Already adapted. No detail.



Illus 9 N gable of W range with blockwork infill to E. January 2016



Illus 10 N gable of W range. From inside. January 2015. (Photograph courtesy of Acanthus Architects Ltd)

Doors and windows

E wall

D9 W: 1.03m H: 2.05m. Granite lintel and rybats. Modern stone infill.

D10 W: 1.07m H: 1.90m. Granite lintel and rybats. Wooden door.

D11 This wall rebuilt.

W wall

D? Door shown on 2015 photographs (Illus 11). Not shown on original elevations or plan and not visible in 2016.

N wall

W2 W: 450mm H: 640mm Granite lintel, sill and rybats.



Illus 11 Looking N along W wall of W range. January 2015 (Photograph courtesy of Acanthus Architects Ltd). Arrow marks door D?



Illus 12 N end of W range. January 2015 (Photograph courtesy of Acanthus Architects Ltd). By 2016 walls rebuilt.



Illus 13 W wall of W range showing difference in stonework at rebuilt section. January 2016

Building 1: The steading. S range



Illus 14 S wall S range. January 2015

Orientation Approx E/W

Dimensions 21.8 x 5.25m externally

Present/recent use Undergoing conversion.

Original use Probably byre

Walls Squared rubble stones

Roof Slate with skylights and ceramic ridge (from photographs). Re-roofed at time of survey.

Interior Already adapted. No detail.

Doors and windows

E wall

D5 W: 2.18m H: Not known. Granite rybats.

W3 Window above shown on photograph (Illus 16) but not on original elevation.

No longer extant.



Illus 15 S range. E gable. January 2016.



Illus 16 S range. E gable. January 2015. (Photograph courtesy of Acanthus Architects Ltd).

S wall

D5 W: 1.20m H: 2.00m. Granite lintel and rybats.

D6 W: 1.17m H: 2.10m. Granite lintel and rybats. Modern stone blocking.

D7 W: 1.17m H: 2.10m. Granite lintel and rybats. Modern stone blocking.

D8 W: 0.97m H: 2.10m. Granite lintel and rybats.

W1 W: 0.45m H: 0.75m.

N wall

D12 Not possible to measure

F2 Apparent blocking on 2015 photograph (Illus 18).



Illus 17 N wall of S range, E of E range. Partially demolished. January 2016.



Illus 18 N wall of S range, E of E range.. Note smaller rubble stonework and blocked doorway(?).January 2015 (Photograph courtesy of Acanthus Architects Ltd).

Building 1: The steading. E range

Orientation Approx N/S

Dimensions 12.5 x 6m externally

Present/recent use Stable

Original use Mill with loft above



Illus 19 E range January 2016



Illus 20 E range January 2015. (Photograph courtesy of Acanthus Architects Ltd).

Walls Squared rubble stone

Roof Slate with skylights and ceramic ridge.

Interior No original features remain. 2015 photographs show threshing machine (Illus 21-22) with drive shaft through original opening F1 (Illus 24). It appears very similar to late 19th/early 20th century type illustrated by Fenton and Walker (1981, fig 171), suggesting that this was put in when this building replaced the water mill after the 1899 OS map was drawn.



Illus 21 Threshing machine still in situ in E range in 2015. January 2015 (Photograph courtesy of Acanthus Architects Ltd).



Illus 22 Detail of threshing machine still in situ in E range in 2015. January 2015 (Photograph courtesy of Acanthus Architects Ltd).



Illus 23 N gable E range January 2016. Note concrete block infill between E and W ranges.

Doors and windows

N wall

D1 W: 2.45m H: 3.05m. Granite lintel and rybats. Wooden sliding door.

E wall

D2 W: 1.20m H: 2.10m. Granite lintel and rybats. Wooden door.

D3 W: 1.20m H: 1.50m. Granite rybats., projects into roof. Opens to loft.

Wooden door.

F1 W: 0.60m H: 0.68m Granite lintel, sill and rybats. Opening for drive shaft for threshing machine.

V : vent 180 x 300mm (Illus 24)

S wall

D4 W: 1.20m H: 2.00m.



Illus 24 E wall of E range showing drive shaft of threshing machine in situ in January 2015.
(Photograph courtesy of Acanthus Architects Ltd). V= vent



Illus 25 E wall of E range. January 2016

Building 2: The farmhouse

Orientation Faces S

Dimensions 13 x 13.5m externally

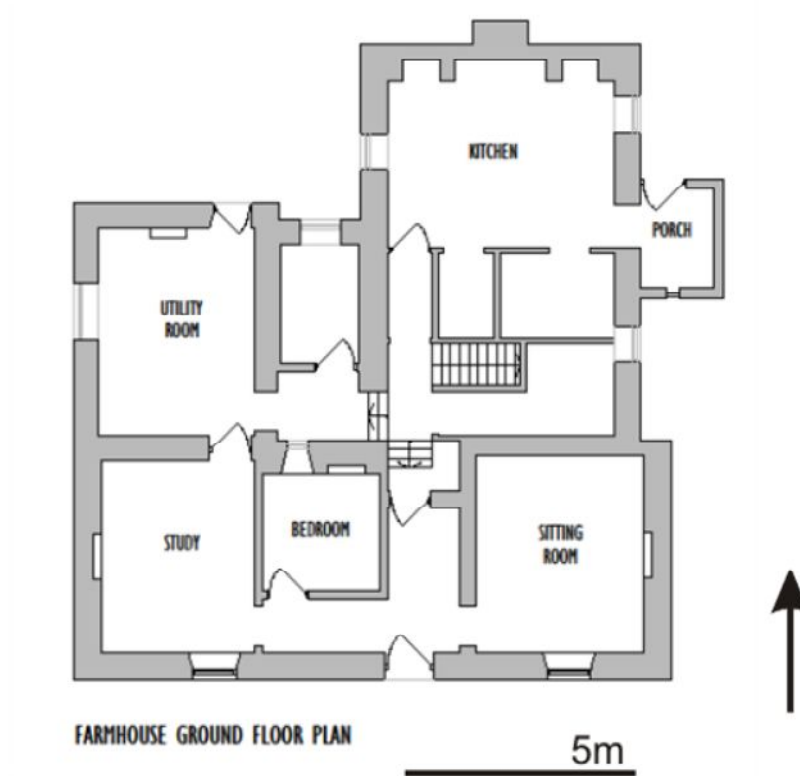
Present/recent use Derelict.

Original use House

Walls Harled stonework. Appears to have been built in 3 stages with front 1 ½ storey, then E wing 1 ½ storey and finally NW single-storey infill. A low porch later added to E facade.

Roof Slate with skylights and ceramic ridge (from photographs). Squared stone chimney with flat table at either gable of front part of house. Unusual double chimney at N end of E extension, both stone chimneys but the later one added externally to gable (Illus 29). Brick chimney to fireplace of central back room of front part of house.

Interior Not safe to enter.



Illus 26 Plan of house. Courtesy of Acanthus Architects Ltd



Illus 27 S facade of house January 2015 (Photograph courtesy of Acanthus Architects Ltd).



Illus 28 S facade of house January 2016

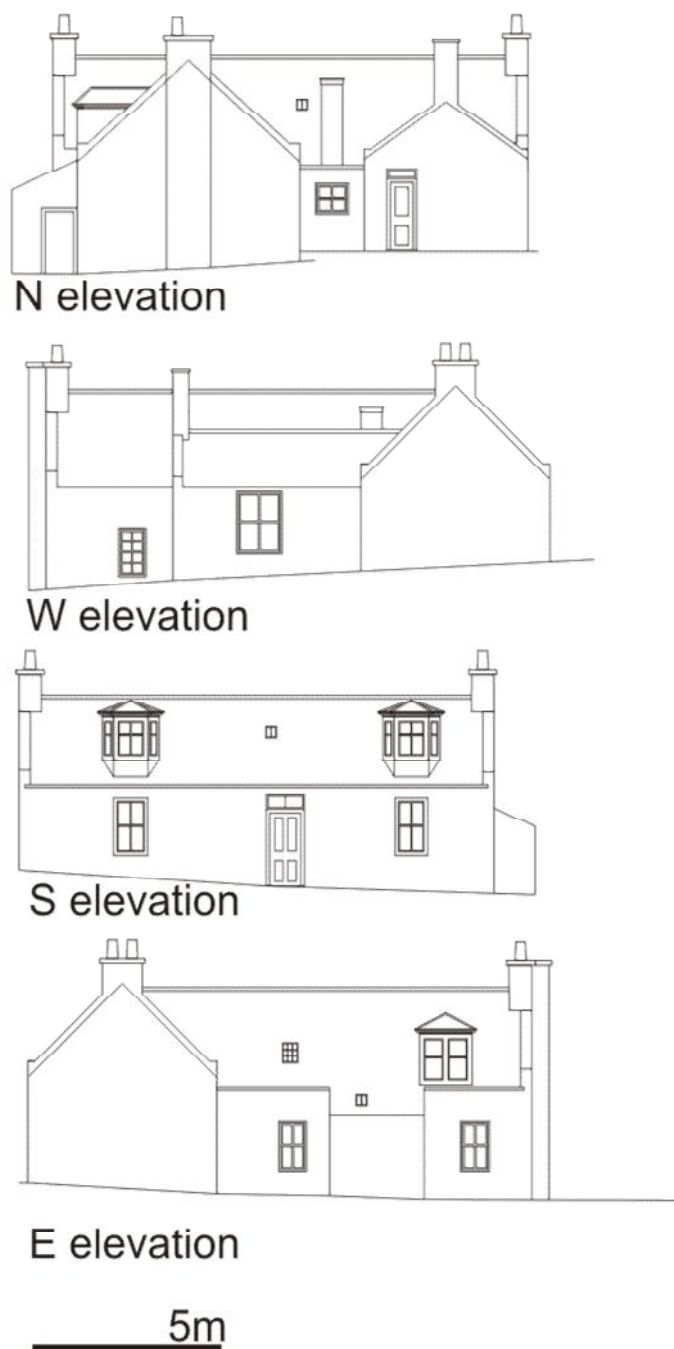
Doors and windows

S wall

Central door (W: 1.06m H: 2.33m. Wooden door with 2-paned glass light above) flanked by two windows (W: 0.90m H: 1.53m. 2/2 sash). Dormers into upper floor, originally slated and with partially slated sides.

E wall

Central door (Not measured as porch collapsing) flanked by windows (W: 0.76m H: 1.33m 2/2 sash). Dormer above.



Illus 29 House elevations Based on drawings courtesy of Acanthus Architects Ltd.

Building 3

Small freestanding building to NE of house, on N side of mill lade where it runs below track (Illus 1).

Orientation N/S

Dimensions 5.3 x 3m externally

Present/recent use Derelict.

Original use Not known. But position and the chimney suggest laundry/boiler house or similar.

Walls S end of stone, N end of timber

Roof Corrugated iron with brick chimney

Interior Fireplace at E end of S wall

Doors and windows

W wall

Window W: 0.65 H: 0.68m

N wall

Door W: 0.81m H: 1.60m



Illus 30 Building 3 from SW



Illus 31 Building 3 in relation to mill lade (red arrows)

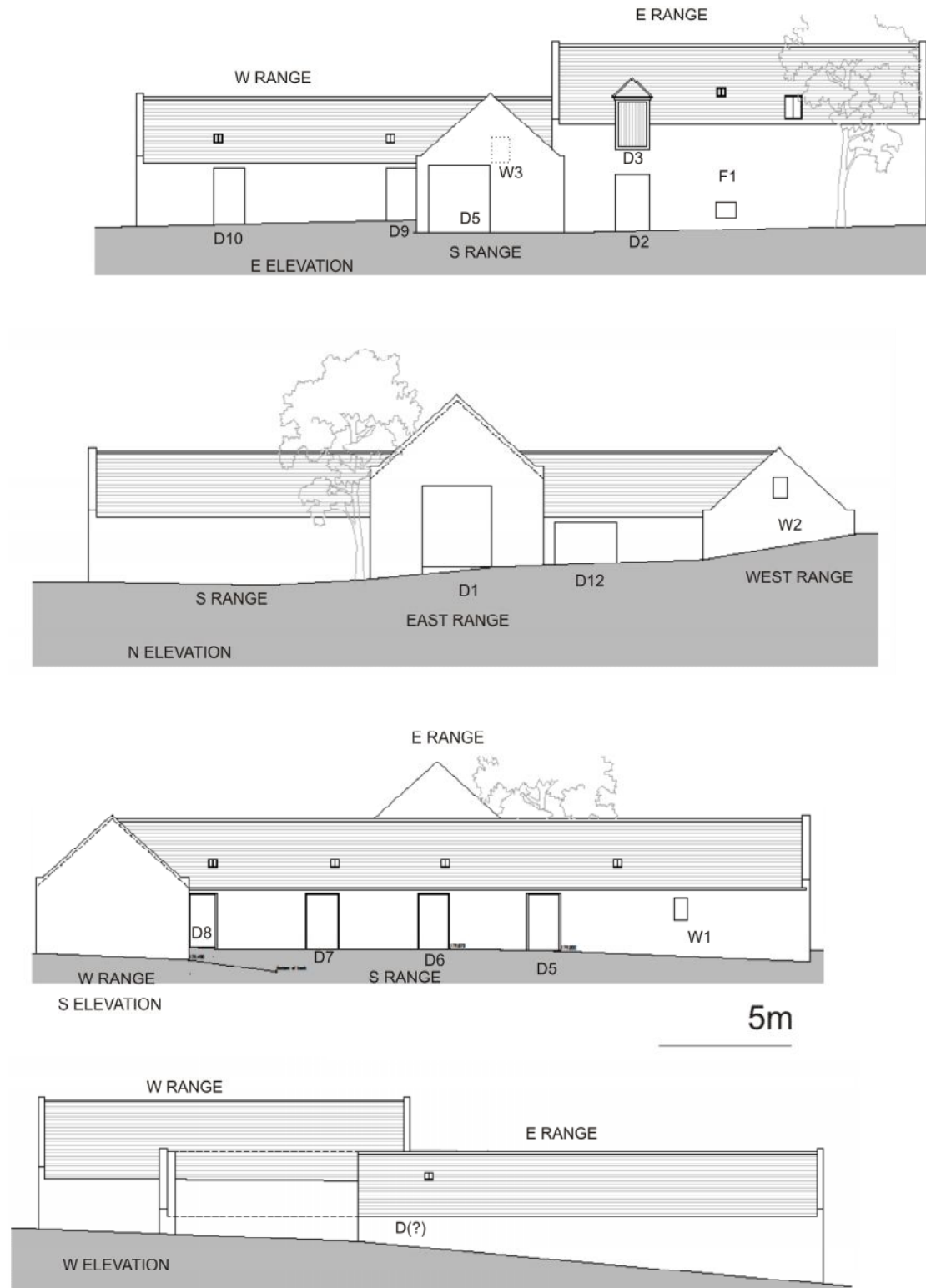
7 Discussion

This appears to have been a moderately prosperous medium-sized farm. The quality of the squared rubble stonework is good and the house appears to have been at its present, fairly generous, extent by the 1st OS map of 1867. The farm, with its freestanding water mill to the N, appears to have remained more or less the same up to the 1899 2nd edition OS map. However at some point, probably in the early 20th century, the water mill was abandoned and the E range built with a threshing machine (and possibly other machinery) driven by mechanical power from an engine standing in the yard E of the new range, with the drive shaft running through the wall. The opening for the drive shaft appears to be part of the original construction of this range.

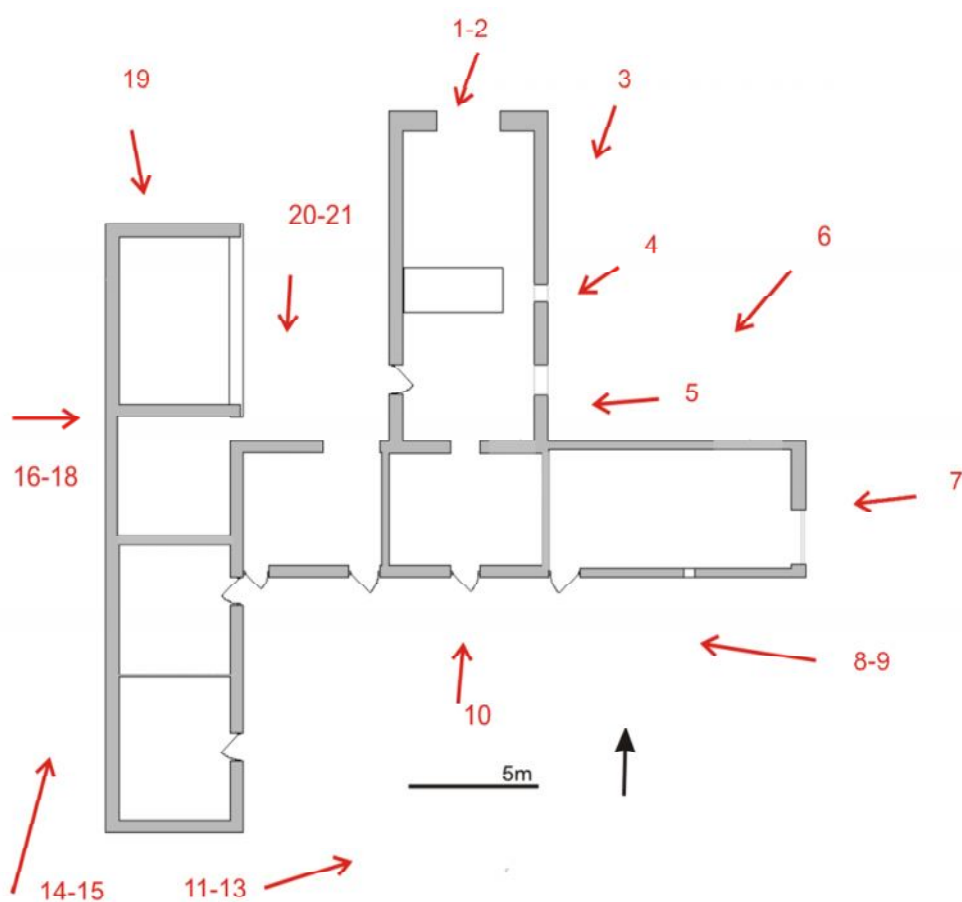
References

A Fenton & B Walker 1981 *The rural architecture of Scotland*. John Donald: Edinburgh

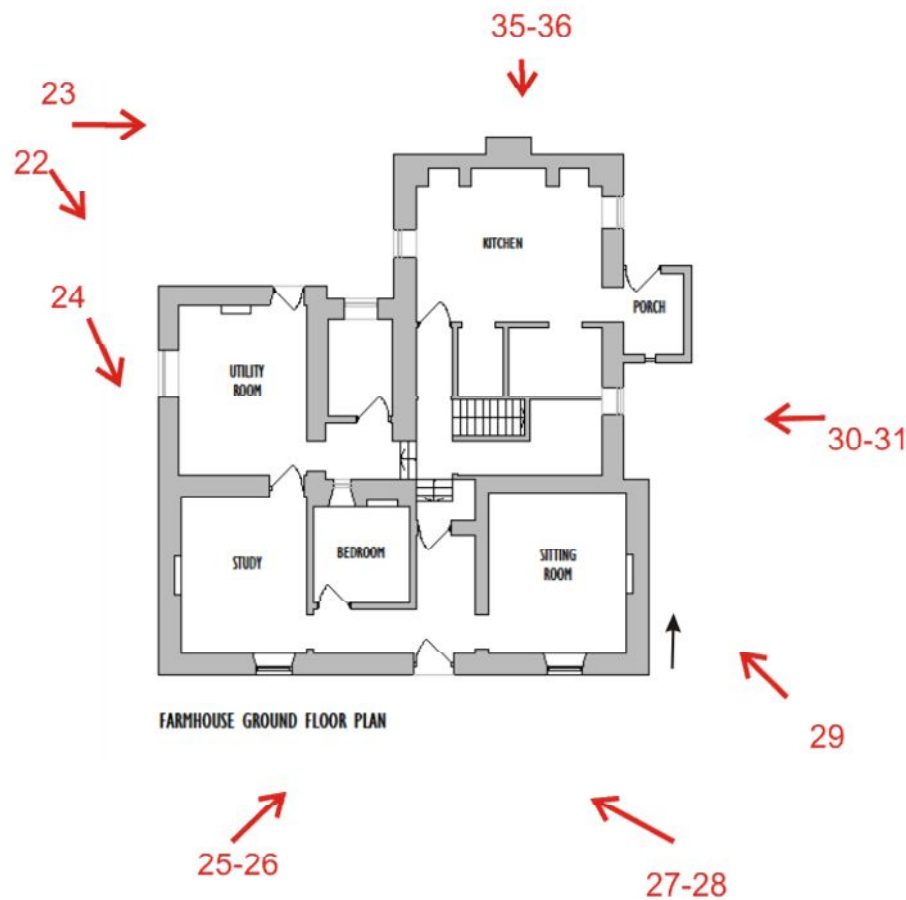
- 8 **Archive:** A full set of photographs with the photo location plans (Illus 33-35) will be supplied to the Aberdeenshire SMR and to the HES archive.



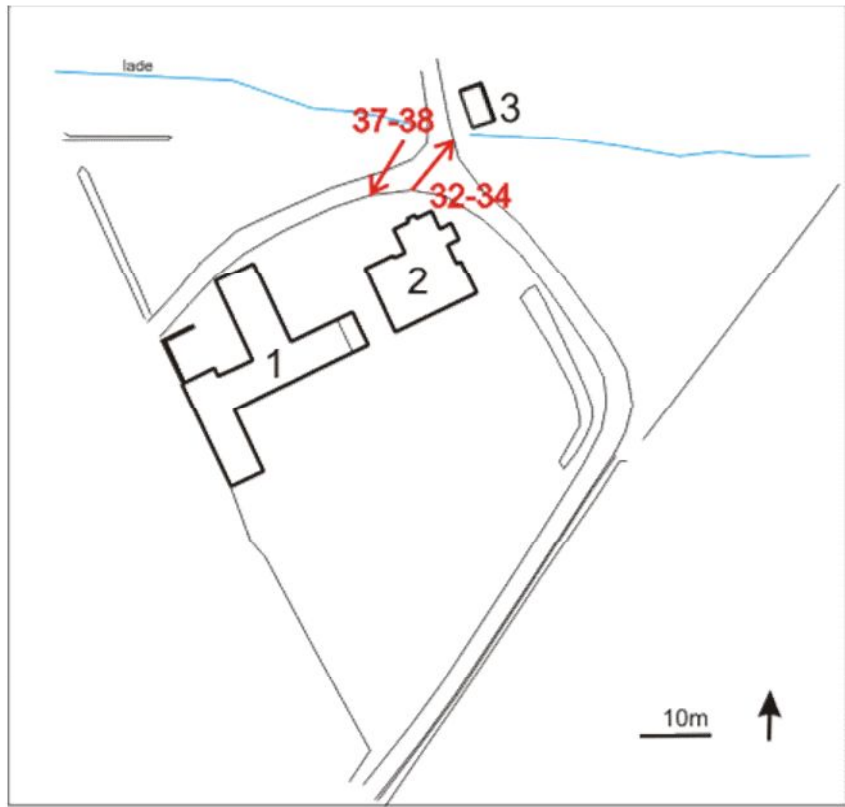
Illus 32 Elevations of steading. Based on drawings courtesy of Acanthus Architects Ltd.



Illus 33 Photographs of steading



Illus 34 Photographs of house



Illus 35 Photographs of wider area