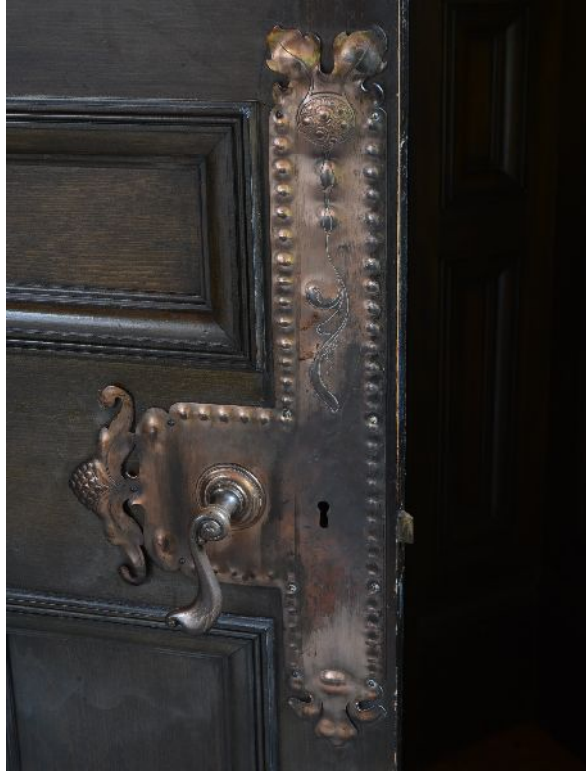


**32 PANMURE STREET
BRECHIN
ANGUS**



Standing Building Photographic Survey

Carried out 4th April 2016

by

Murray Archaeological Services Ltd



Report No: MAS 2016-18

by

H K Murray and J C Murray

H K Murray BA, PhD, MIFA, FSA Scot

J C Murray BA, MIFA, FSA Scot, FMA

Hill of Belnagoak, Methlick, Ellon, Aberdeenshire AB41 7JN

Telephone: (01651) 806394 e-mail: cmurray@btinternet.com

32 PANMURE STREET
BRECHIN
ANGUS

- Standing Building Photographic Survey -

1. Background
 - 1.1 A photographic survey was required for the former Registrar's Office and Council Chamber at 32 Panmure Street, Brechin prior to its conversion as a dwelling.
 - 1.2 The archaeological condition was applied in the context of planning legislation (PAN 2/2011, SPP, SHEP), which states that it is necessary for developers to arrange for archaeological work to take place prior to development, in appropriate circumstances. Planning Application Numbers: 15/01137/LBC
 - 1.3 The condition required that *'prior to the commencement of works, a photographic survey of all elevations of the building and the interior of the building, including any unusual features, shall be submitted for the approval of this planning authority and the Aberdeenshire Council Archaeology Service, and this survey shall be digital (jpeg, tiff, pdf) and be submitted by e-mail, on CD or via online file sharing services and shall be clearly marked with place name for identification, national grid reference and planning reference and the approved photographic survey shall be deposited with the Aberdeenshire Council Archaeology Service for addition into the local sites and monuments record.*
 - 1.4 Murray Archaeological Services Ltd was commissioned to undertake the work by Ian Ingram on behalf of Tayside Builders Ltd. The site element of the standing building survey was completed on the 4th April 2016.
- 2 The Building
 - 2.1 The building lies on the S side of Panmure Street, Brechin.

Parish: Brechin NGR NO59907 60370

NMRS No: NO56SE 203

Listed Building : LB22532 Category C

2.2 Designed in 1897 by Brechin.architect, D Wishart Galloway.

3 Methodology

3.1 The ground plan (illus 1) and elevation (illus 2-4) have been annotated to indicate the location of all photographs. The full set of photographs will be supplied for the archive in the Angus SMR in Aberdeen and to the NMRS. 3.2 As the building retains most of its original internal details and many of its original Art Nouveau fittings, there was a considerable number of special features worthy of note.

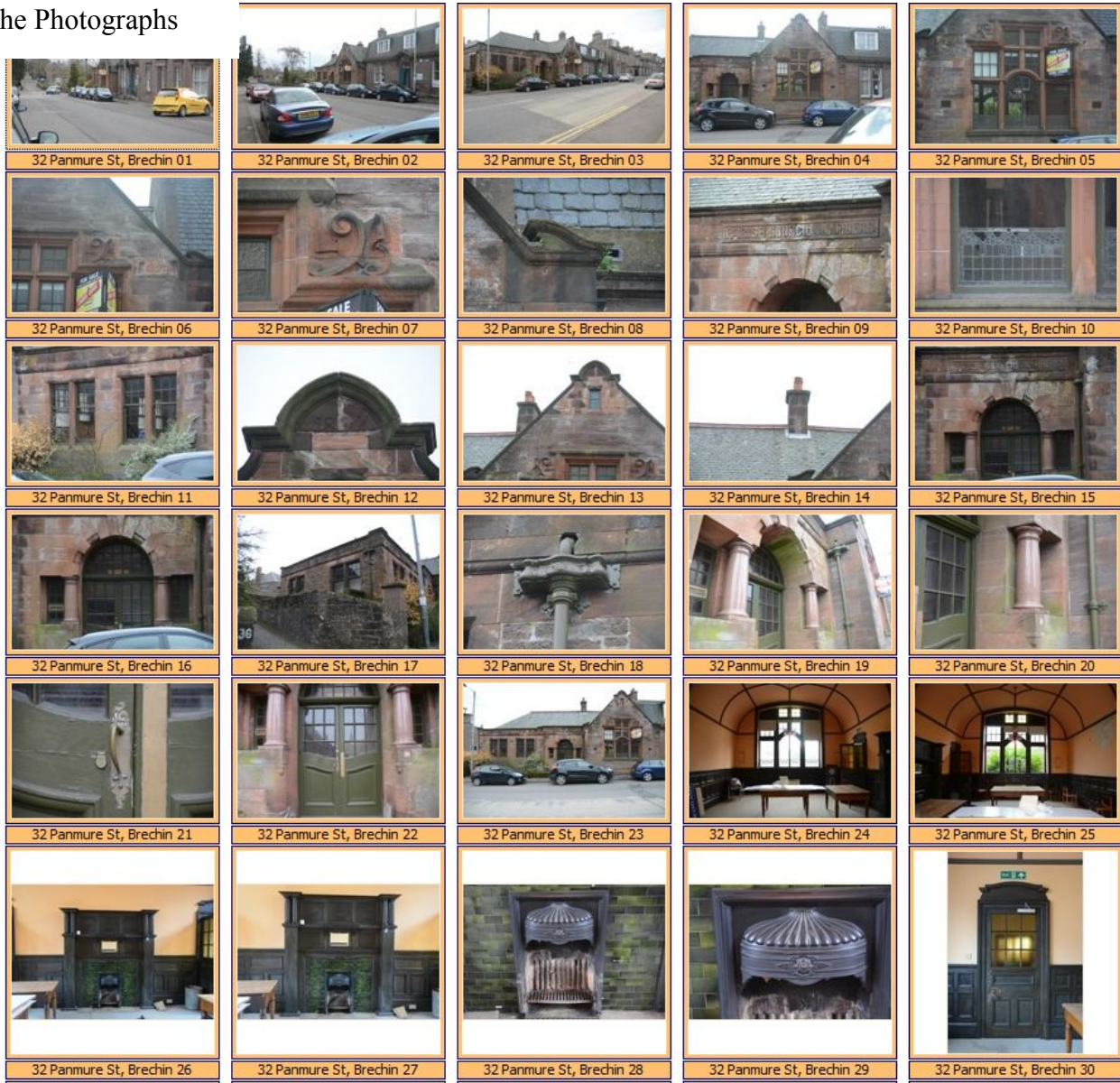
4 Notes

4.1 Door fittings.

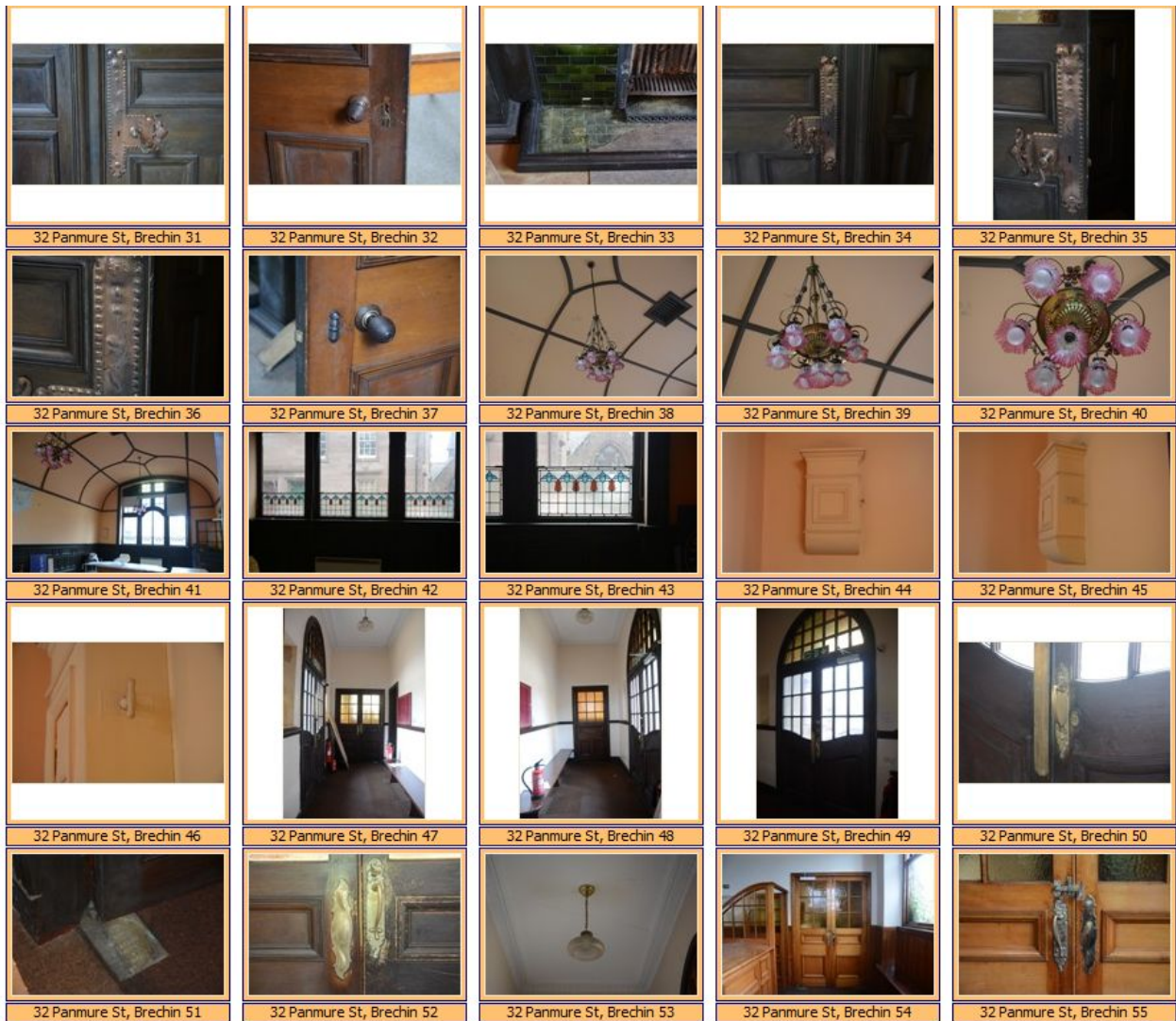
- Council Chamber door fittings D3, D4) Internal Art Nouveau finger board (photos 31, 35) with plain ribbed wooden knobs externally into hall and back office. Same wooden knobs on D11 (sink room)
- Main door D1 and Registry door D2 (photos 49, 52) Internal and external Art Nouveau handles
- D6, D7- office part or Registry- plain brass handles (photo 65)

4.2 Vents (marked with blue V on plan). Rectangular vents with lever to open or shut air flow. At all 4 corners of Council Chamber and at the two outer corners of Registry. Externally covered by metal grilles.

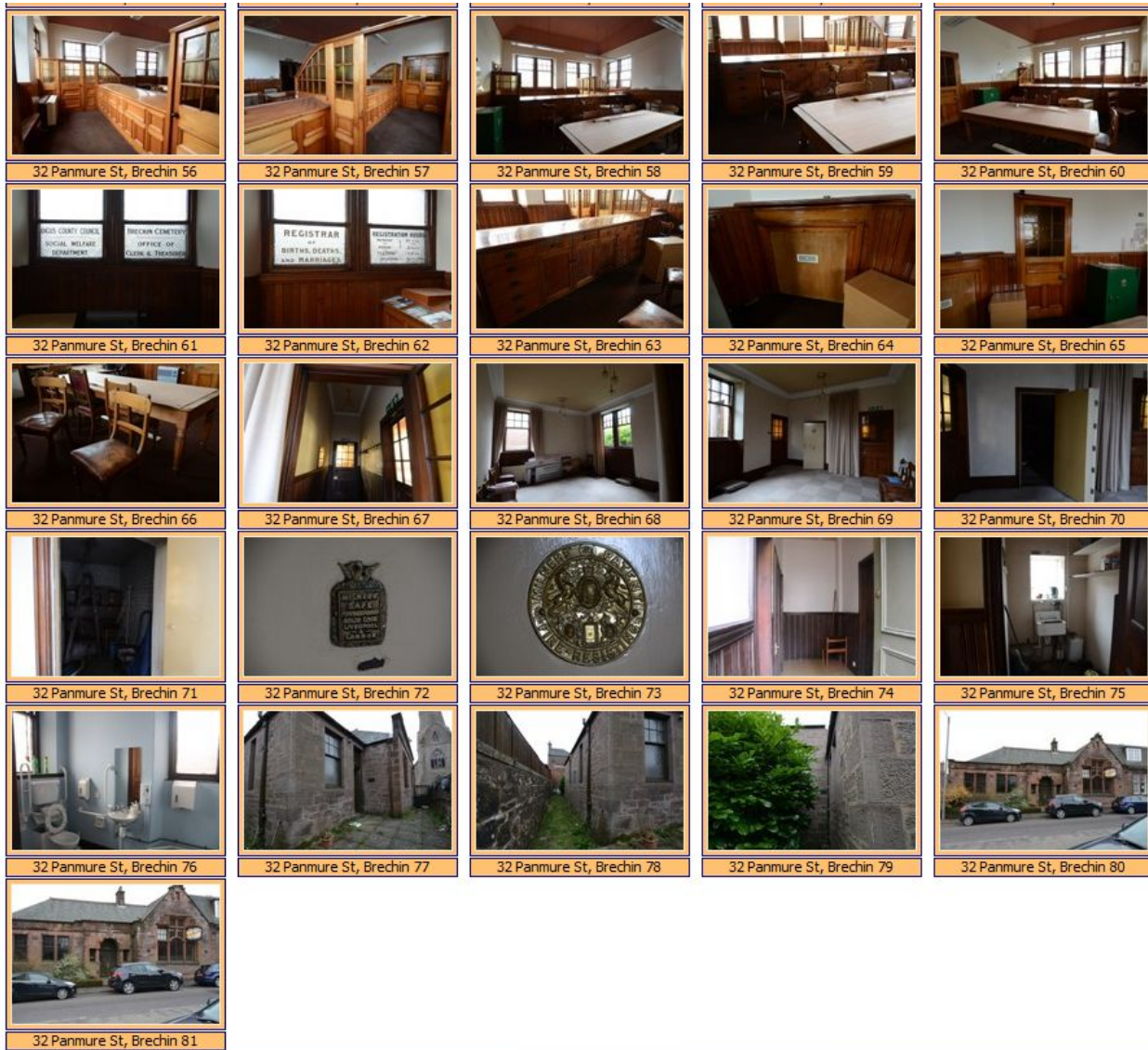
The Photographs



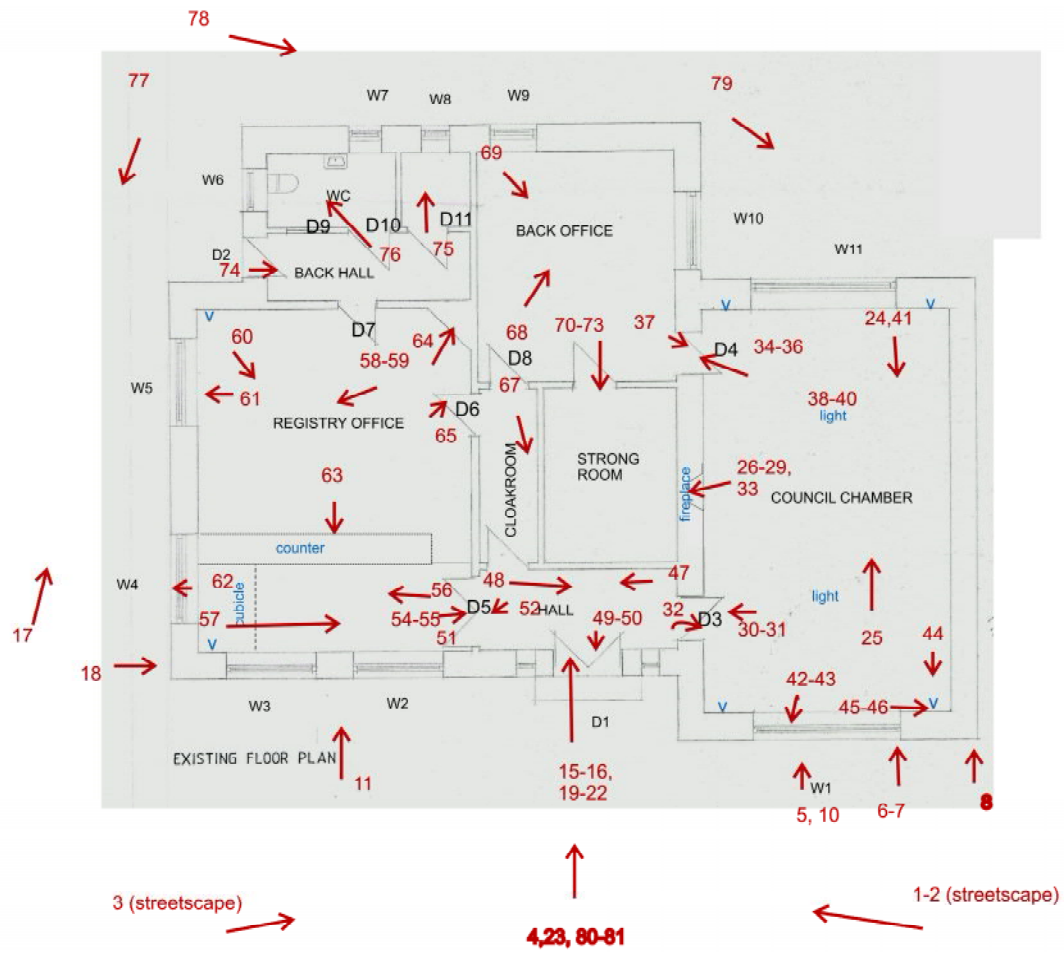
| | | | |
|-------|-----------------------------|-------|--|
| 1-3 | Setting in Panmure Street | 14 | Chimney |
| 4 | NW facade on Panmure Street | 15-16 | Door D1 details |
| 5-7 | Details window W1 | 17 | NE elevation |
| 8 | Detail skeuputt | 18 | Detail of cast iron down pipe NE elevation |
| 9 | Name above door D1 | 19-22 | Door D1 details and fittings |
| 10 | Window W1 stained glass | 23 | NW elevation |
| 11 | Windows W2, W3 | 24-25 | Council chamber |
| 12-13 | Datestone | 26-29 | Fireplace in Council Chamber |
| | | 30 | Council chamber door D3 inside face |



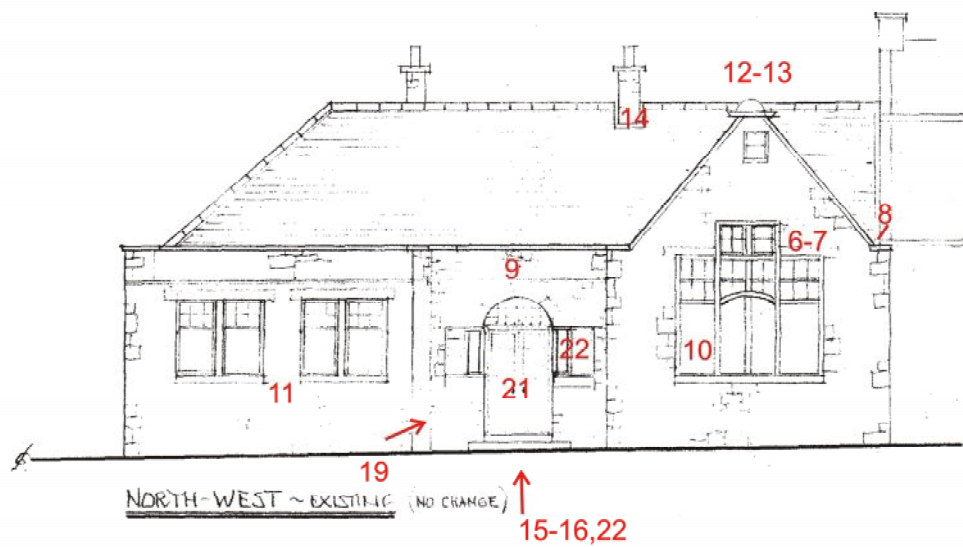
| | | | |
|-------|---|-------|---|
| 31 | Council chamber door D3 handle fitting inside | 45-46 | Council chamber Air vent side view with detail of control lever |
| 32 | Council chamber door D3 handle fitting external | 47 | Hall looking to Registry door D5 |
| 33 | Council chamber hearth detail | 48 | Hall looking to Council chamber door D3 |
| 34-36 | Council chamber door D4 handle fitting inside | 49-50 | Hall door D1 internal view and detail handle |
| 37 | Council chamber door D4 handle fitting outside | 51 | Door D5 swivel plat with maker's name |
| 38-40 | Council chamber detail of light | 52 | Door D5 handle to hall external |
| 41 | Council chamber ceiling looking towards window W1 | 53 | Hall light |
| 42-43 | Council chamber window W1 from inside | 54 | Door D5 to Registry internal view. Counter to LHS |
| 44 | Council chamber Air vent front | 55 | Door D5 inside (Registry) view handle |



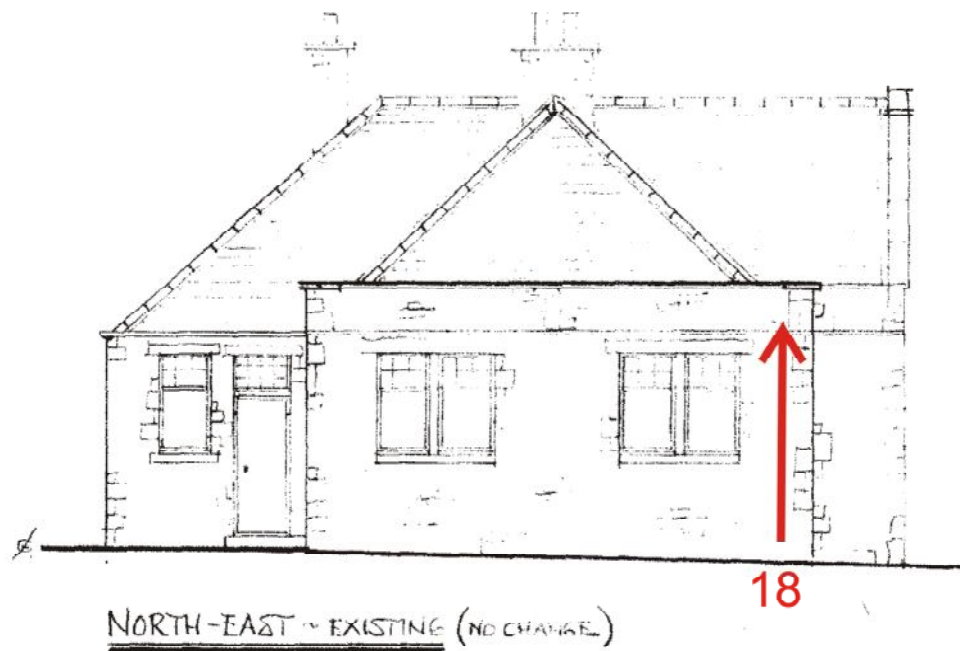
| | | | |
|-------|--|-------|---|
| 56 | Registry looking from door D5 | 67 | Cloakroom looking from D8 towards hall |
| 57 | Registry looking to door D5 | 68-69 | Back Office |
| 58-60 | Registry- office looking across counter to public side | 70-71 | Strong room |
| 61-62 | Registry windows with notices | 72-73 | Strong room door details of maker's signs |
| 63 | Registry counter detail | 74-76 | Back hall, sink room and WC |
| 64 | Registry. Blocked fireplace | 77 | NE elevation |
| 65 | Registry door D6 | 78-79 | SE elevation |
| 66 | Chairs from Council chamber | 80-81 | Front NW elevation |
| | | | |



Illus 1 Plan courtesy of Tayside Builders ltd, annotated by MAS Ltd. Photo numbers in red- see also catalogue and elevations



Illus 2 NW elevation (Front) courtesy of Tayside Builders Ltd, annotated by MAS Ltd. Photo numbers in red.



Illus 3 NE elevation courtesy of Tayside Builders Ltd, annotated by MAS Ltd. Photo numbers in red.



SOUTH-EAST ~ EXISTING

Illus 4 SE elevation courtesy of Tayside Builders Ltd.