

**LOGIE FARM  
FINTRAY  
ABERDEENSHIRE**



**Standing Building Survey**  
Carried out 1<sup>st</sup> September 2016  
by  
**Murray Archaeological Services Ltd**



**Report No: MAS 2016-26**  
by  
H K Murray and J C Murray

H K Murray BA, PhD, MCifA, FSA Scot  
J C Murray BA, MCifA, FSA Scot, FMA  
Hill of Belnagoak, Methlick, Ellon, Aberdeenshire AB41 7JN  
Telephone: (01651) 806394 e-mail: cmurray@btinternet.com

**LOGIE FARM**  
**FINTRAY**  
**ABERDEENSHIRE**

**- Standing Building Survey -**

1. Background
  - 1.1 A standing building survey was required for a steading at Logie Farm, Fintray, Aberdeenshire, prior to its conversion to 3 dwelling houses and the demolition and replacement of the present farmhouse.
  - 1.2 The archaeological condition was applied in the context of planning legislation (PAN 2/2011, SPP, SHEP), which states that it is necessary for developers to arrange for archaeological work to take place prior to development, in appropriate circumstances. Planning Application Numbers: APP/2016/1708
  - 1.3 A Level 1 Standing Building Survey was required which includes measured plans and elevations, a written account of the building's plan, form, function, age and development sequence in addition to a photographic survey of the interior and exterior of the building.
  - 1.4 Murray Archaeological Services Ltd was commissioned to undertake the work by William Lippe Architects Ltd on behalf of their clients Mr & Mrs Stratton. The site element of the survey was completed on the 1<sup>st</sup> September 2016.
2. Desk-top survey
  - 2.1 A search was carried out in the Sites and Monuments Record, Archaeology Service, Aberdeenshire Council and in the National Monuments Records of Scotland at the Historic Environment Scotland (HES) through Canmore and Pastmap.
  - 2.2 The 1<sup>st</sup>, 2<sup>nd</sup> and 3<sup>rd</sup> edition Ordnance Survey maps were consulted.

2.3 The plans and elevations were provided by William Lippe Architects Ltd and have been annotated by MAS Ltd.

### 3. The Site

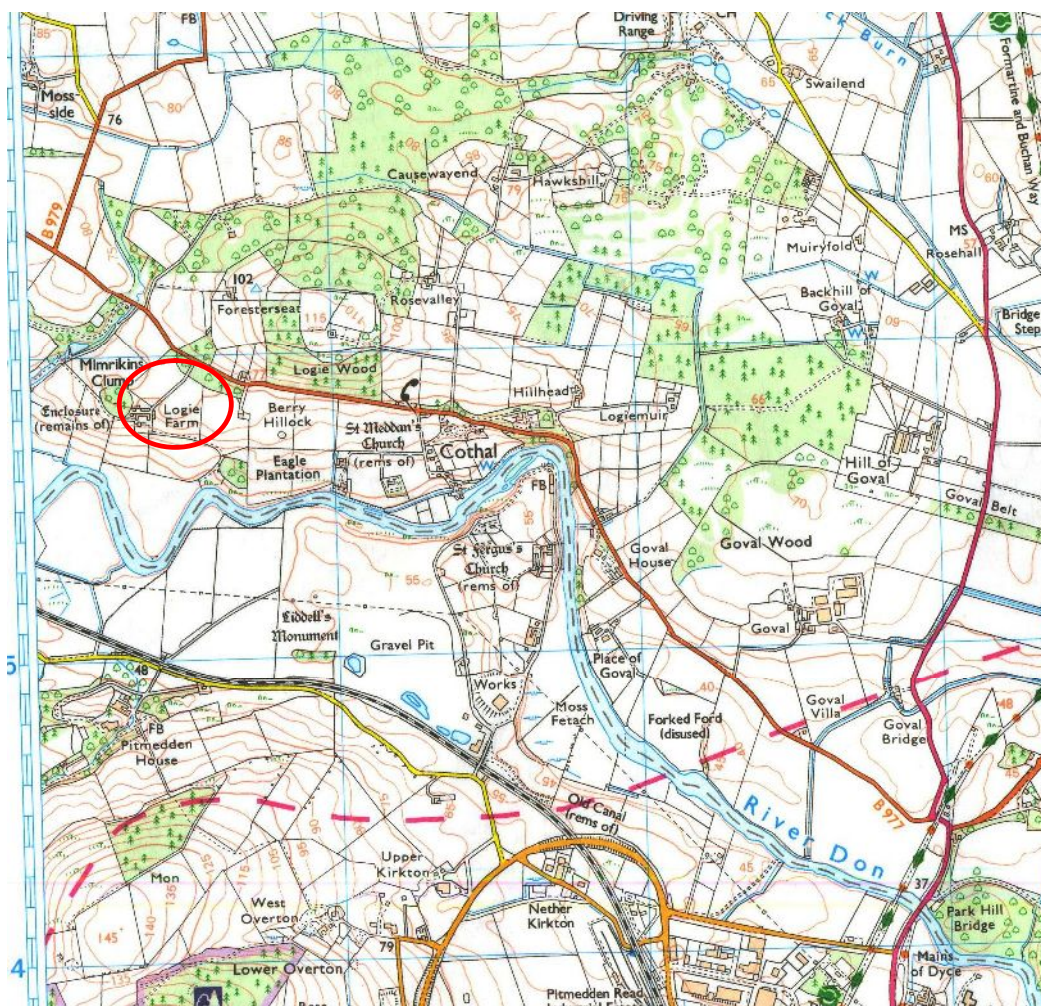
3.1 The site, which extends to 8753 square metres, lies on a private track just S of the B977 road from Hatton of Fintray to Dyce, and E of Cothall. It is at c70m OD on a ridge on the N side of the Don, overlooking the river.

Parish: Fintray                      NGR NJ 8636 1579

GPS in front of steading: 386366, 815794

NMRS No: NJ81NE 145

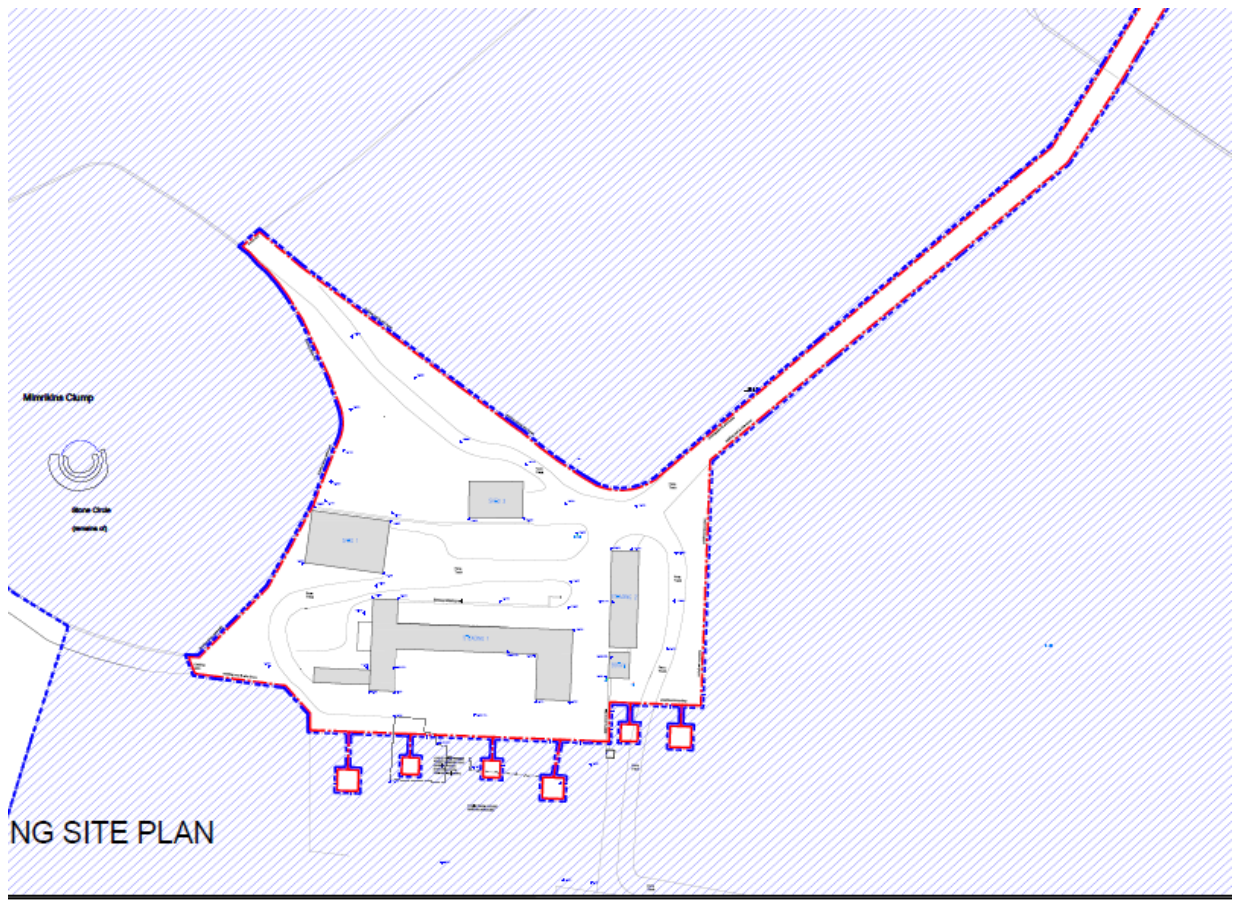
Aberdeenshire SMR: NJ81NE0166 Farmstead.



Illus 1 Detail of OS map. Ordnance Survey © Crown copyright (2015) All rights reserved. Licence number (100049810). Site indicated by red circle.



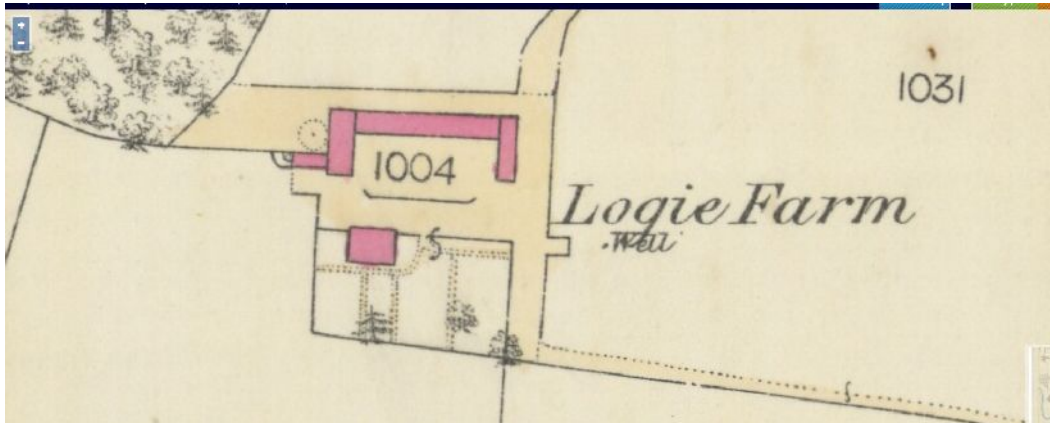
Illus 2 General view looking WSW across Don



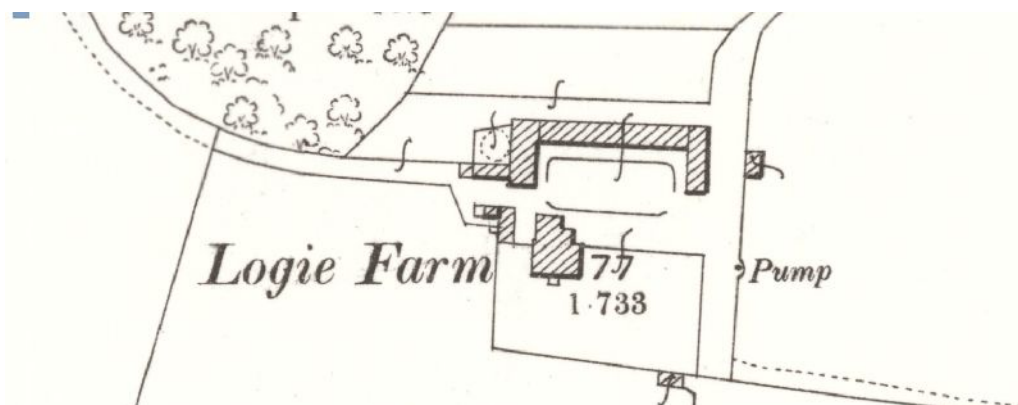
Illus 3 Layout plan courtesy of William Lippe Architects Ltd

#### 4. Documentary evidence

4.1 **Aberdeen Sheet LXV.4 (Fintray) 1865 (pub 1869)** shows a long U-shaped steading, lying E/W and facing S with a small building extending the line of the S wall of the W range at the SW corner and a horse mill set in the angle between it and the main steading. The house, a rectangular block, lies to the S.



Illus 4 Detail of the 1<sup>st</sup> edition Ordnance Survey 25" map, Aberdeen Sheet LXV.4 (Fintray) 1865 (pub 1869) [www.nls.ac.uk](http://www.nls.ac.uk)



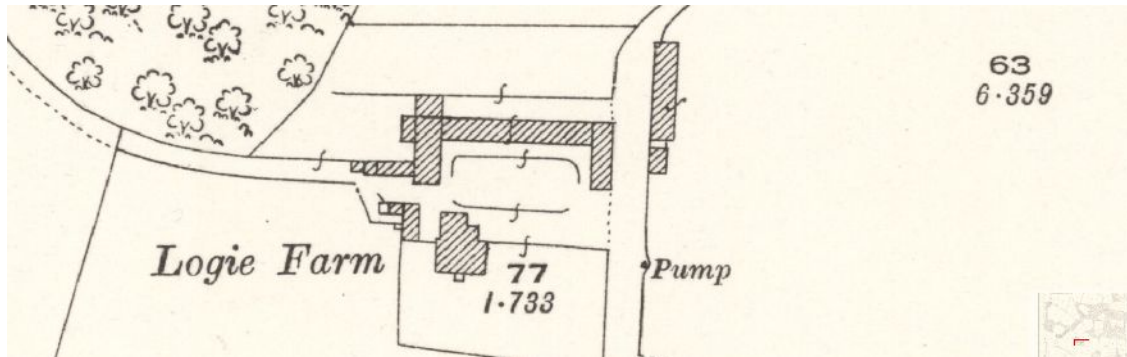
Illus 5 Detail of the 2<sup>nd</sup> edition 25"/mile Ordnance Survey of 1899 (published 1900, Aberdeenshire Sheet 065.04) [www.nls.ac.uk](http://www.nls.ac.uk)

4.2 By the 2<sup>nd</sup> edition 25"/mile Ordnance Survey of 1899 (published 1900, Aberdeenshire Sheet 065.04 ) the U-shaped steading remains but the SW extension

has been extended further W and the horse mill has been enclosed. A small L-shaped freestanding building lies to the S, W of the house and another small freestanding building has been added E of the farm track. The farmhouse has been extended on the N side.

4.3 By the 3<sup>rd</sup> edition 25"/mile Ordnance Survey of 1924 (published 1925, Aberdeenshire Sheet 065.04 ) an additional N/S building has been added, E of the

farm track. The main stabling remains but the horse mill has been removed and there are two small additional extensions to the W and N of the NW corner of the W range of the main stabling.

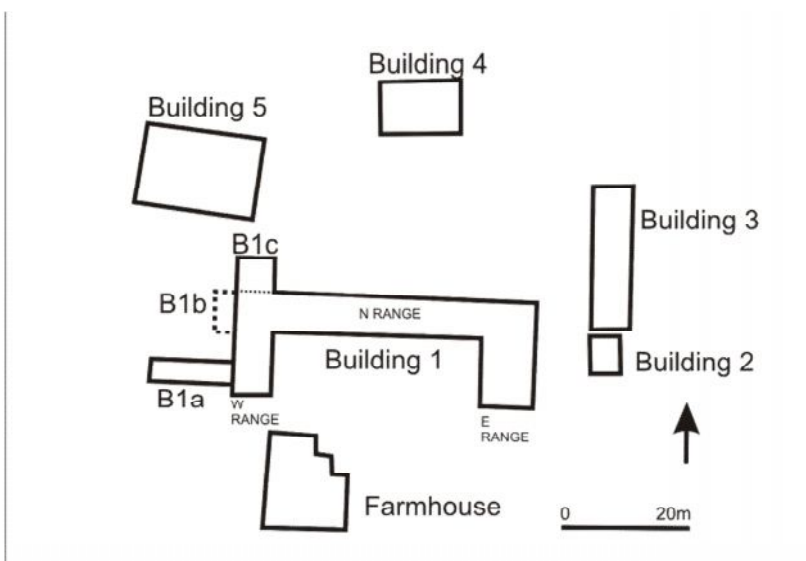


Illus 6 Detail of the 3<sup>rd</sup> edition 25''/mile Ordnance Survey of 1824 (published 1925. Aberdeenshire Sheet 065.04) [www.nls.ac.uk](http://www.nls.ac.uk)

## 5 Methodology

- 5.1 The ground plans and elevations (illus 11, 12, 28-30) have been annotated to show details which may help in understanding the development and history of the building.
- 5.2 The areas recorded were photographed. The full set of photographs will be supplied for the archive and annotated plans in the present report (illus 46-48) indicate the position of each.

## 6 The Steading



Illus 7 Key plan

## Building 1

The building had been constructed on a slope, so the back wall had been cut into the slope with a retaining wall behind. The slope had also clearly caused problems to the W of the W range as the ground here had been built up, blocking windows in Building B1a. Part of this infill had been removed prior to the survey.



**Illus 8 Building 1 N wall of N range . Blocked door D13 visible by ranging rod. Retaining wall to slope on LHS. Building 3 in background**



**Illus 9 W of Building 1 built up ground, partly removed.**

Dimensions N range 46.5 x 6m externally.

W range 16 x 6m externally.

E range 10.5 x 8m externally

Building 1a 13.15 x 3.43m externally

Building 1b Demolished prior to survey. 3 x 6.7m (from plan)

Building 1c 6 x 5m externally

Present/recent use Derelict,

Original use N range: Cattle

W range: Threshing mill, grain and straw storage

E range: Prior to c 1899-1914 this was probably the stable and hay loft above. The cart store was probably N of this at the E end of the N range. After the early 20<sup>th</sup> century, these functions were moved to Building 3; from this point the range may have been used for more cattle. Latterly the N end seems to have been used for a tractor as there was an inspection pit.

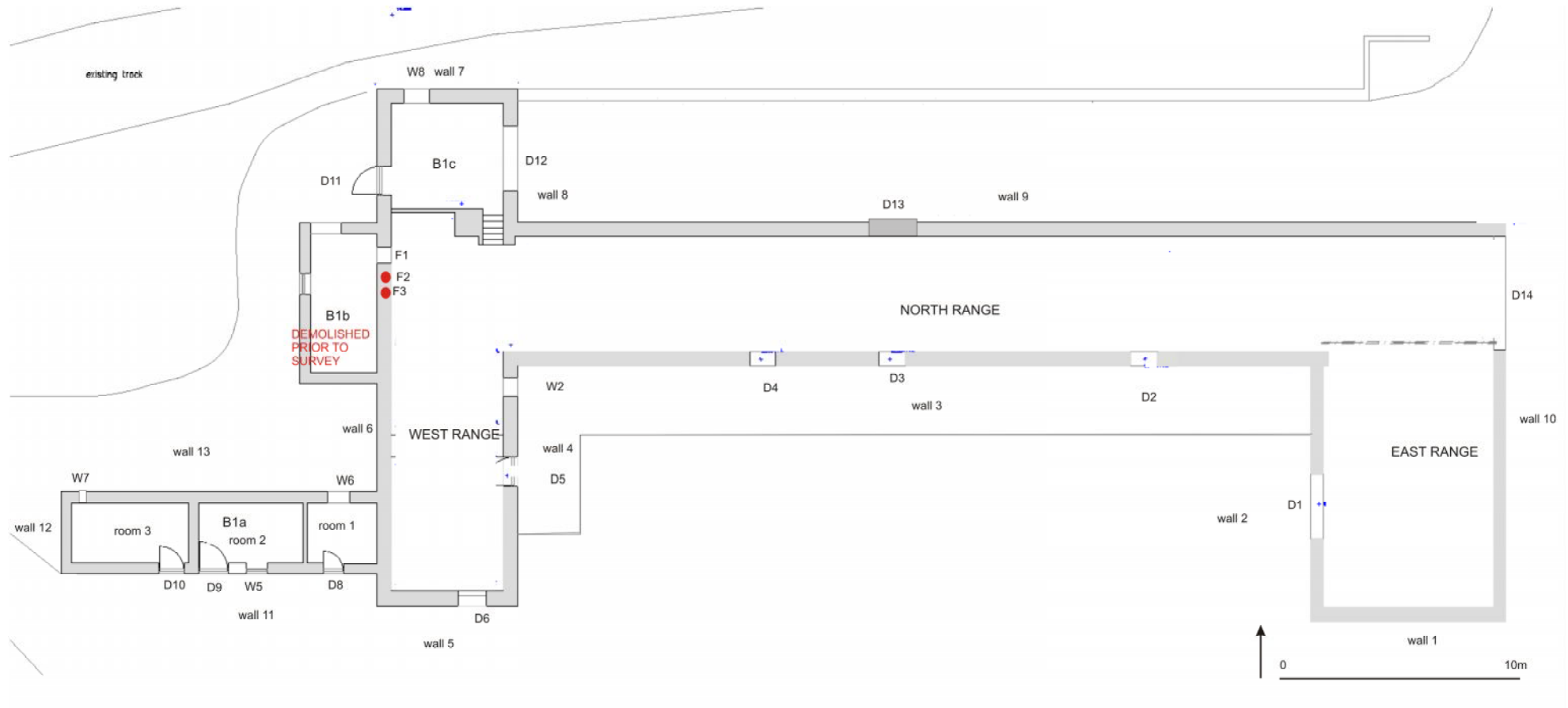
Walls Rubble stone with granite rybats.

Roof Slate (removed) over sarking.

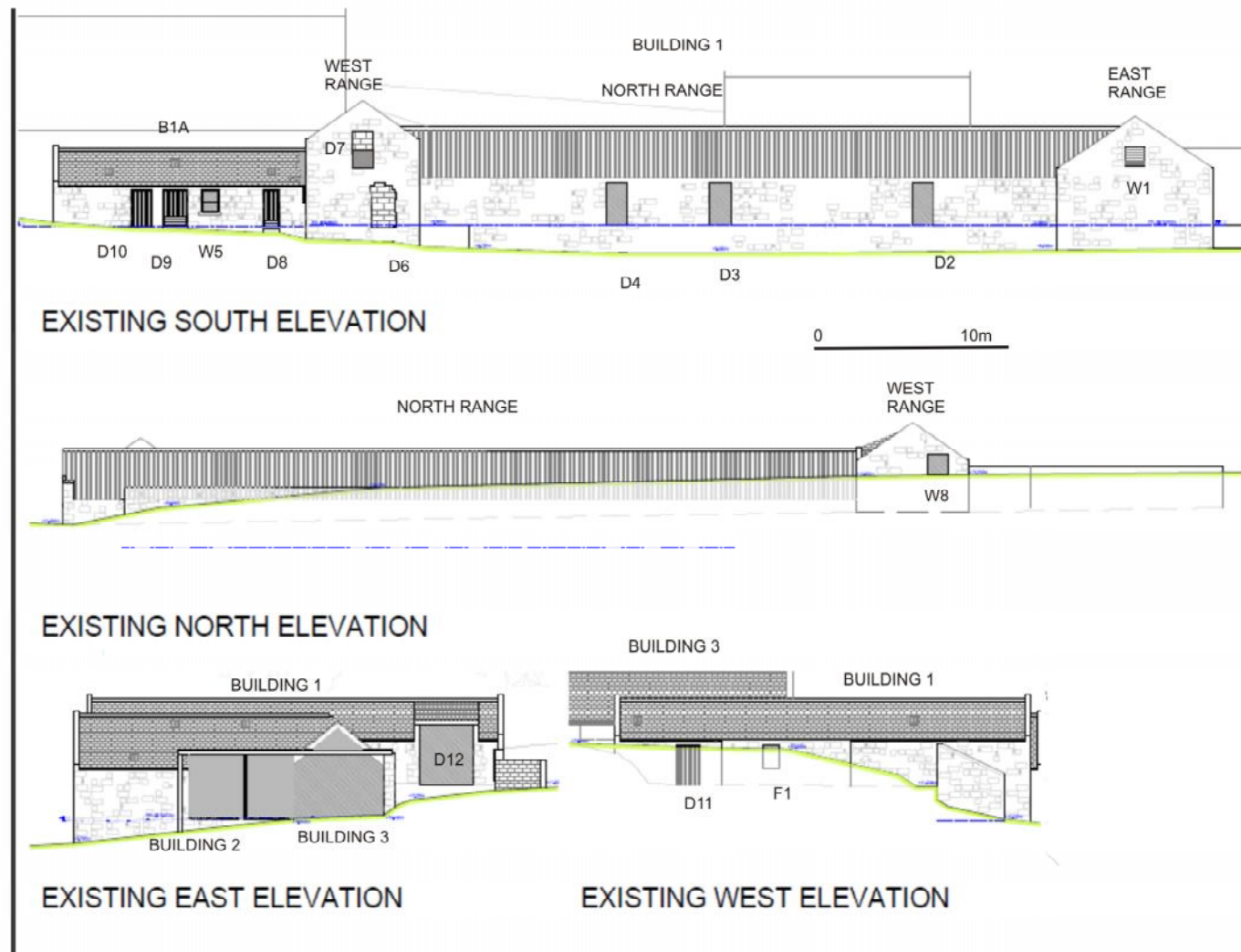


Illus 10 Building 1, general view looking NW (Farmhouse on LHS)





Illus 11 Plan of Building 1. Drawing courtesy of William Lippe Architects Ltd, annotated by MAS Ltd



Illus 12 Elevations of Building 1. Drawing courtesy of William Lippe Architects Ltd, annotated by MAS Ltd

### Doors and windows

#### *Wall 1*

W1 Into loft. Not measured. Granite rybats, lintel and sill. Slatted ventilation.

#### *Wall 2*

D1 W: 2.6m H: 2.65m. Broken through and sides built up with concrete

#### *Wall 3*

D2 W: 1.06m H: 2.30m Granite lintel and rybats

D3 W: 1.06m H: 2.30m Granite lintel and rybats

D4 W: 1.06m H: 2.40m Granite lintel and rybats

#### *Wall 4*

W2 W: 0.73m H: 0.97m Granite lintel, sill and rybats

D5 W: 1.23m H: 2.44m Granite lintel and rybats, transom above wooden door.

W3 W: c 0.80m H: c 0.90m Blocking at loft level. Blocked with stone.  
Granite sill, lintel missing.

W4 W: c.0.80m H: c 0.90m Blocking at loft level. Granite lintel, sill



**Illus 13 Building 1. Wall 4. E elevation of W Range. Note blockings W3 & W4 (arrows)**

*Wall 5*

- D6 Broken through and concrete and brick blocked
- D7 Blocked, reducing it to a window which was later blocked with concrete blocks. W: c.0.90m. Original H: c2m, reduced to c1.2m

*Wall 6*

- D11 W: 1.20m H: 2.05m. Granite lintel and rybats
- F1 c 300mm square. On floor level of original loft (now removed). Metal drive shaft through wall between W range and B1b.
- F2 Similar size to F1. Blocking at wall top (not accessible)
- F3 Double blocking, upper 300 x 350mm, lower 550 x 500mm.



**Illus 14 Building 1. F1 in W wall at level of loft floor.**



**Illus 15 Building 1 interior. W wall of W range. F2 and F3 marked.**

*Wall 7*

W8 W: 1.10m H:0.78m concrete base. Probably later adaptation as chute for grain

*Wall 8*

D12 W: 2.75m H: 3m Granite rybats and lintel

*Wall 9*

D13 W: 2.20m H: unclear. Concrete blocked

*Wall 10*

D14 W: 4.50m. Modern widening. Concrete sides.

Interior

*E Range*

This had been opened through into the E end of N Range and the break-through supported with steel uprights and a beam. No internal details survived. The vented window (W1) in S gable suggests a loft may have existed but no evidence survived.



**Illus 16 Building 1. Interior E range looking S**

*N Range*

The N range was open from the E gable, through into the W range. At the E end, wooden planking across a central pit would suggest that in the recent past this was an inspection pit area used for servicing tractors. This may also explain the widening and raising of the gable door D14.



**Illus 17 Building 1. Interior of N range looking W. Inspection pit in foreground.**

The remainder of the N range had originally had double tied-cow stalls along the N wall, with just the trevis scars remaining. W of blocked door D13, there were 6 double pens (W: c 2.10m) with a concrete floor with a central drain behind the cattle. Stubs of the trevis back posts are still visible. E of blocked door D13 there appeared to have been 7 double pens (W: c2.25m). The floor at this end had been concreted over so no other details survived.



**Illus 18 Building 1. Interior of N range. Scars of trevises of double cow pens on wall (RHS). Drains in floor behind cattle (LHS) and trevis post end stubs (centre foreground).**

*W Range and Building B1c*

The loft floor had been removed so the entire range was open to the roof.

The floor at the S end of the range was c150mm lower than the N end. The blockings F1- F3 in the W wall would have held shafts for a threshing machine, originally one powered by a horse mill outside the wall, later by an engine that would have been in the demolished extension B1b.

Steps from the N end led up to into the extension building B1c, the floor of which was c 1.50m higher than the rest of the range. Further steps had led from this higher area into the loft.



**Illus 19 Building 1. W Range looking S from B1c**



**Illus 20 Building 1. W Range looking N towards B1c**



*BUILDING B1a*

*Wall 11*

D8 W: 0.85m H: 1.90m Granite lintel, rybats and sill

D9 W: 1.22m H: 1.90m Granite lintel, and rybats

D10 W: 1.07m H: 1.90m Granite lintel, and rybats

W5 W: 0.92m H: 1.20m, then reduced to smaller window over partial blocking with concrete. Granite lintel. Glass 1/1panes

*Wall 12*

No openings

*Wall 13*

W6 W: 0.90m H: 0.65m Wooden lintel visible externally. (Opens to room 1)

W7 W: 0.40m H: 0.44m Stone blocked. Measured internally as the raised ground level outside the back of the building almost covered it. Granite lintel (Opens into room 3)

Interior of B1a

*Room 1* Concrete floor. Wooden partition between rooms 1 & 2

*Room 2* Concrete floor. Tap and drain through door. Washing line. Stone wall between rooms 2 & 3 was probably the end wall in 1865, with room 3 the extension built by 1899.

*Room 3*

Sign on door : 'Chemical store'.



**Illus 21 Building B1a looking N. S elevation**



**Illus 22 Building B1a abutting W wall of W Range of Building 1**

#### BUILDING B1b

Demolished prior to survey during works to examine foundations of Buildings 1 and B1c.



**Illus 23 W wall (wall 6) of Building 1 with scar of Building B1b and shaft of F1 (above ranging rod)**

## Building 2

Small bothy facing W onto farm track. Freestanding but linked to B3 by short section of wall – probably to stop stock running through.

Dimensions 4.9 x 6.10m externally

Present/recent use Derelict,

Original use Bothy

Walls Squared rubble walls with small horizontal pinnings. Granite rybats.

*W wall*

D15 W: 1.09m H: 1.98m Granite lintel and rybats

W19 W: 0.92m H: 1.33m Granite lintel, sill and rybats

Roof Hipped. Slate (removed) over sarking.

Chimney Tall square granite chimney in centre of back (E) wall. Flat table.

Interior Original vertical pitch pine lining of walls and pine lined ceiling.

Door D15 opens into small lobby with door on S side into the room.

Room has cast iron fireplace in middle of E wall with granite mantel. (W: 0.64m H: 0.90m. Graffiti initials carved into walls. White painted work horse on wall over fireplace. Vertical grooved timber against N wall is possible fitting from box bed. Floor concrete. Electric light installed.



Illus 24 Bothy (B2) W elevation



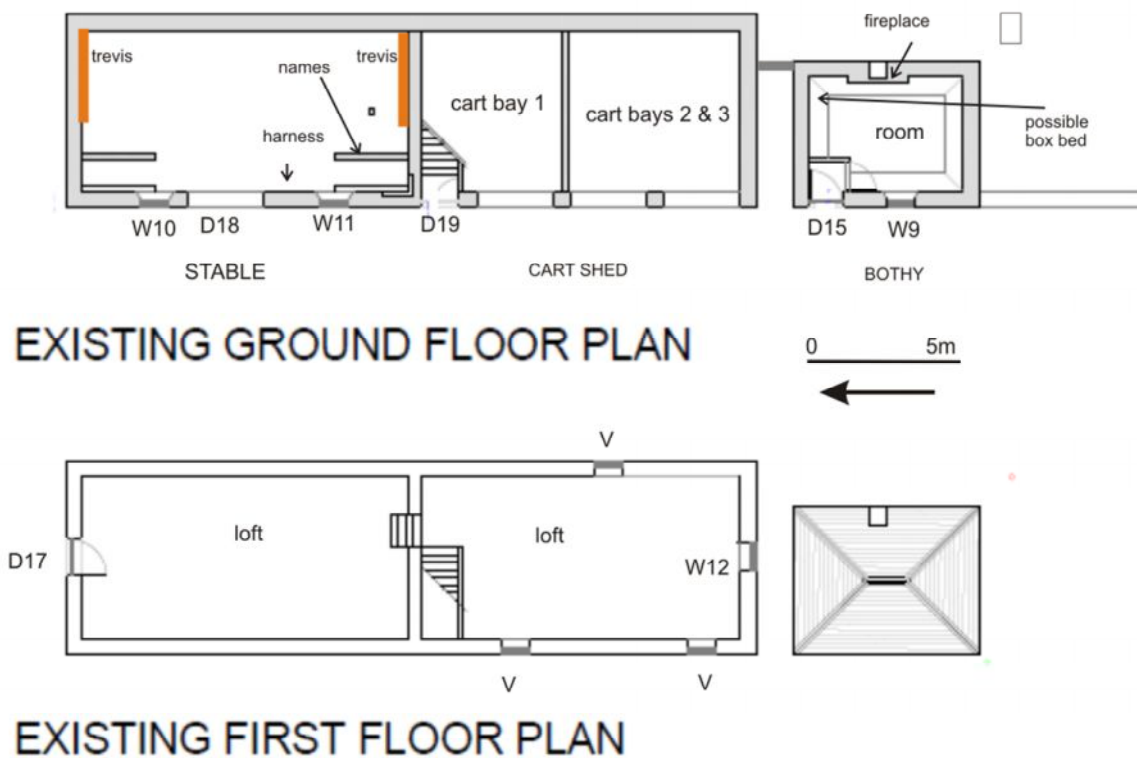
**Illus 25 Bothy E elevation**



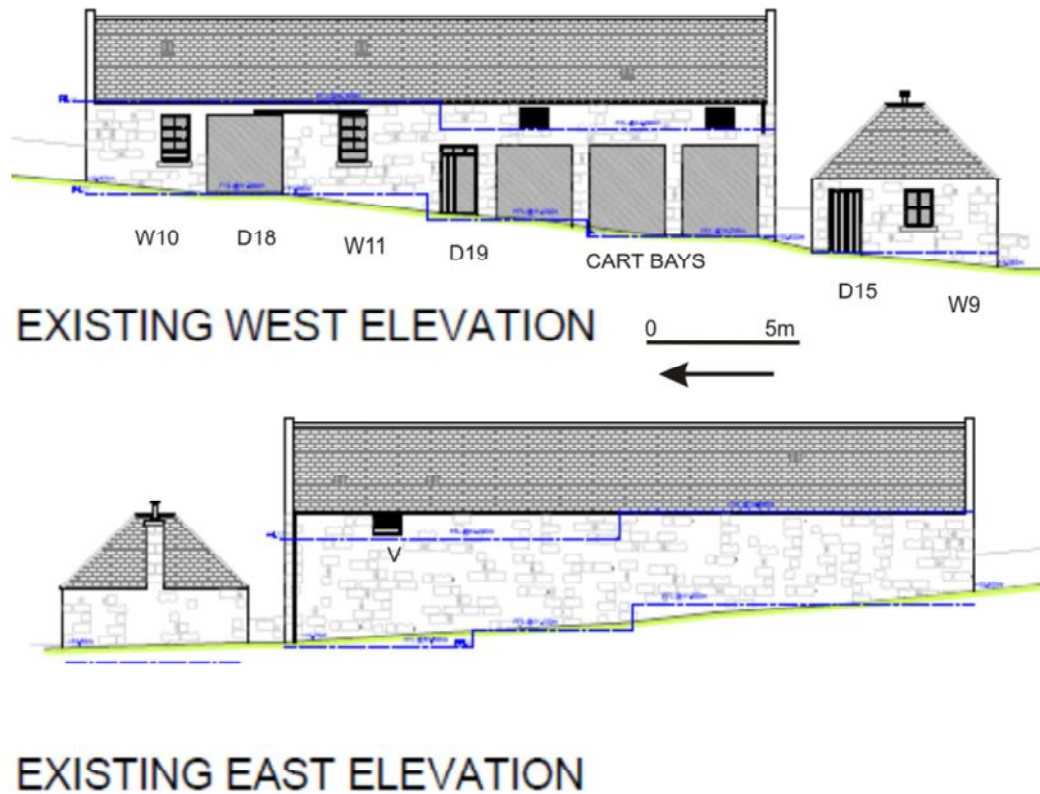
**Illus 26 Bothy, interior of room looking towards NE corner**



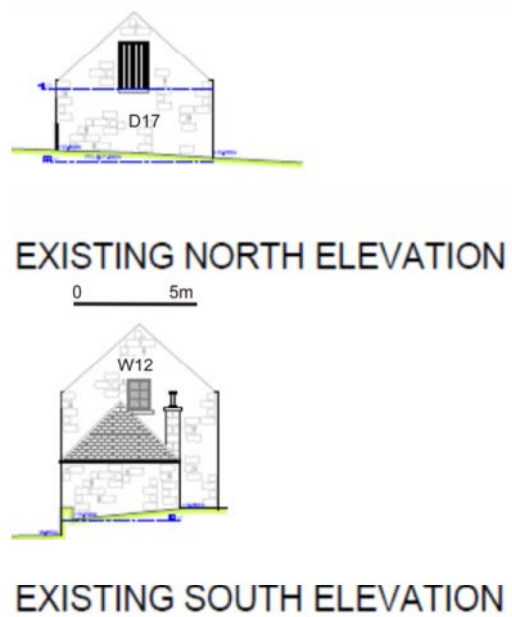
Illus 27 Bothy Interior, looking N. Ranging rod stand beside grooved timber- possibly for box bed. Door to lobby on LHS



Illus 28 Building 2 (Bothy) and Building 3 (Stable and cart shed). Plan courtesy of William Lippe Architects Ltd, annotated by MAS Ltd



Illus 29 Building 2 (Bothy) and Building 3 (Stable and cart shed). Elevations courtesy of William Lippe Architects Ltd, annotated by MAS Ltd



Illus 30 Building 2 (Bothy) and Building 3 (Stable and cart shed). Elevations courtesy of William Lippe Architects Ltd, annotated by MAS Ltd

### Building 3

N/S rectangular building facing W onto farm track. Cut into slope at upper (N) end.

N end contained stables, S end, which is open to track, had been cart bays.

Dimensions 22.75 x 6.5m

Present/recent use Derelict,

Original use Stable and cart shed

Walls Squared rubble, buff-grey. Similar to main steading.

Roof Pitched. Slate (removed) over sarking. Remnants of skylights into lofts.

#### *W wall*

D18 W: 2.44m H: 2.60m Granite rybats. Replacement concrete lintel. Had had a (modern) sliding door.

D19 W: 1.22m H: 2.30m. Granite lintel and rybats Door missing. Transom light with 3 panes.

W10 W: 0.92m h: 1.55m Granite lintel, rybats and sill. Glass 6 panes (2/2/2) over wooden slatted vent

W11 W: 0.92m H: 1.53m Granite lintel, rybats and sill. Glass 6 panes (2/2/2) over wooden slatted vent (broken).

Cart bay 1 W: 2.48m H: 2.50m Granite lintel and piers between.

Cart bays 2 W: 2.44m H: 2.95m Granite lintel and piers between.

Cart bays 3 W: 2.44m H: 3.15m (further S down slope of ground) Granite lintel and piers between.

2 slatted air vents into S loft.

#### *S wall*

W12 W: c1m H: c1.2m Glass 6 panes (2/2/2) [Measured on elevation]

#### *E wall*

1 slatted air vent into S loft.

#### *N wall*

D17 Loft door W: 1.25m H: 2m. Into N loft



**Illus 31 Building 3. N and W elevations**

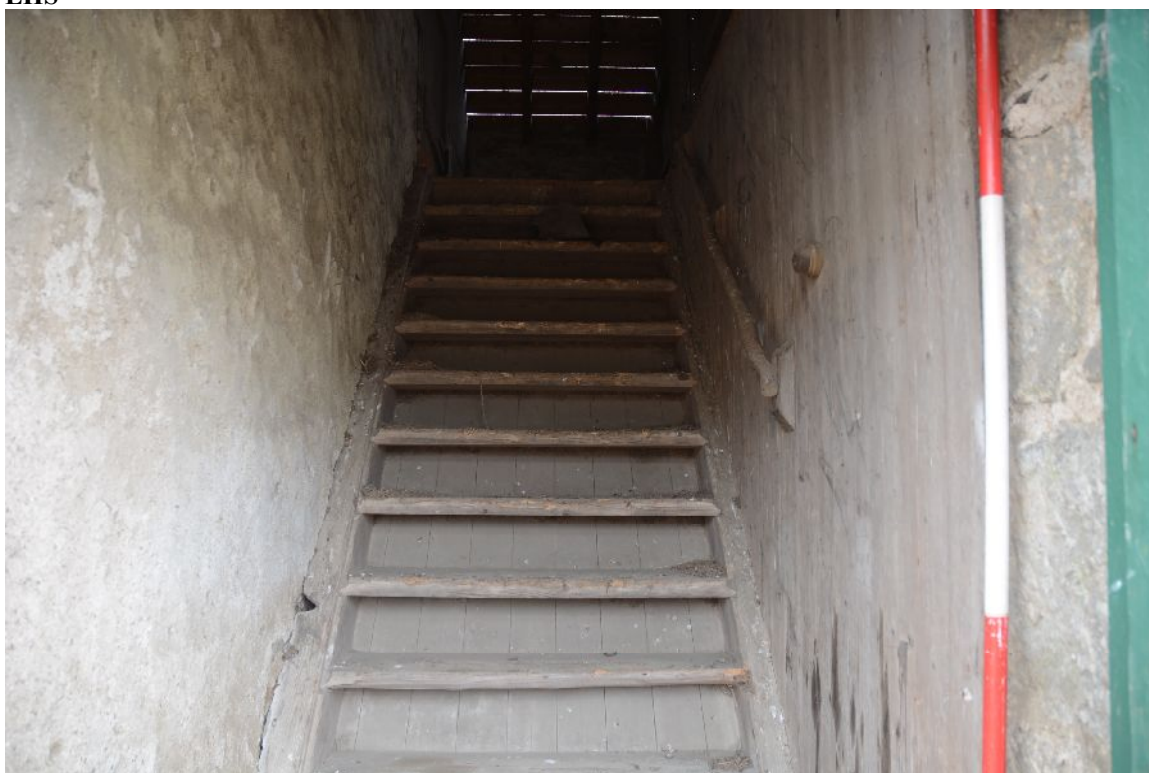


**Illus 32 Building 3 N and E elevations**





**Illus 33** Building 3. N cart bay with underneath of stair on LHS



**Illus 34** Building 3. Stair to loft in centre of W wall.

Interior: 1<sup>st</sup> floor

*N Loft*

Wood lined walls.

*S Loft*

Louvered vents give ventilation. Hopper (?) to cart bay 3 below. Seeder (?) box.



**Illus 35 Building 3. S section of loft looking S from top of stair**

Interior: Ground floor

*Cart bays:* Wooden partition wall between cart bay 1 and cart bay 2. No partition between 2 and 3. Cart bay 1 may have been gig/horse trap shed, with the higher bays 2 and 3 for the farm carts.

*Stable:* The stable had been cleared internally but trevis scars showed there had been 6 horse stalls 1.40-1.70m wide (stalls at S end with names above were widest- probably the farm heavy horses). The end trevises in the N and S walls survived. They were 2.77m long with plank sides protected on the top line by a metal band.

Horse names 'Nan' and 'Jock' were painted on a beam above the two S stalls. A piece of harness- a saddle/back pad with terrets from draft horse harness -remained over a beam on the W wall.



**Illus 36 Building 3. Trevis in N wall and trevis scars on back (E) wall**



**Illus 37 Building 3. Stable looking S. Names on beam above (red arrow)**



**Illus 38 Building 3. Detail of horse names**



**Illus 39 Building 3. Harness remaining on hook. Saddle/back pad with terrets- from draft horse harness.**

## Building 4

Dimensions c 8 x 12m

Present/recent use General purpose agricultural shed

Original use General purpose agricultural shed

Walls Concrete blockwork

Roof Corrugated asbestos



Illus 40 Building 4 looking NE

## Building 5

Dimensions c 12 x 18m

Present/recent use General purpose agricultural shed/ machinery store

Original use General purpose agricultural shed

Walls Steel frame with concrete block walls.

Roof Corrugated iron



Illus 41 Building 5 looking W

## Farmhouse

1 ½ storey farmhouse facing S. Slightly cut into slope as cellar windows at ground level either side of front steps. By 1899 a N extension made it into an L-plan, with a porch added in the angle of the 'L'.

Dimensions Original block c 8 x 13m; with additional extensions to N c 15 x 13m

Present/recent use Derelict,

Original use Farmhouse

Walls Harled. E gable not harled- granite blocks.

Roof Slate (removed) over sarking. Dormers and skylight in into attic in S face of main roof. Dormer and skylight into W face of N extension roof, skylights in E face. Porch: flat roof.

Chimneys Chimneys at either end of main block and N gable of N extension. Granite with flat tables. Some ceramic chimney pots surviving.

Doors and windows Not recorded in detail as all were modern plastic replacements.

Front windows with original granite margins.

Interior Totally modernised. Not entered.



Illus 42 Farmhouse E elevation



**Illus 43 Farmhouse S elevation**

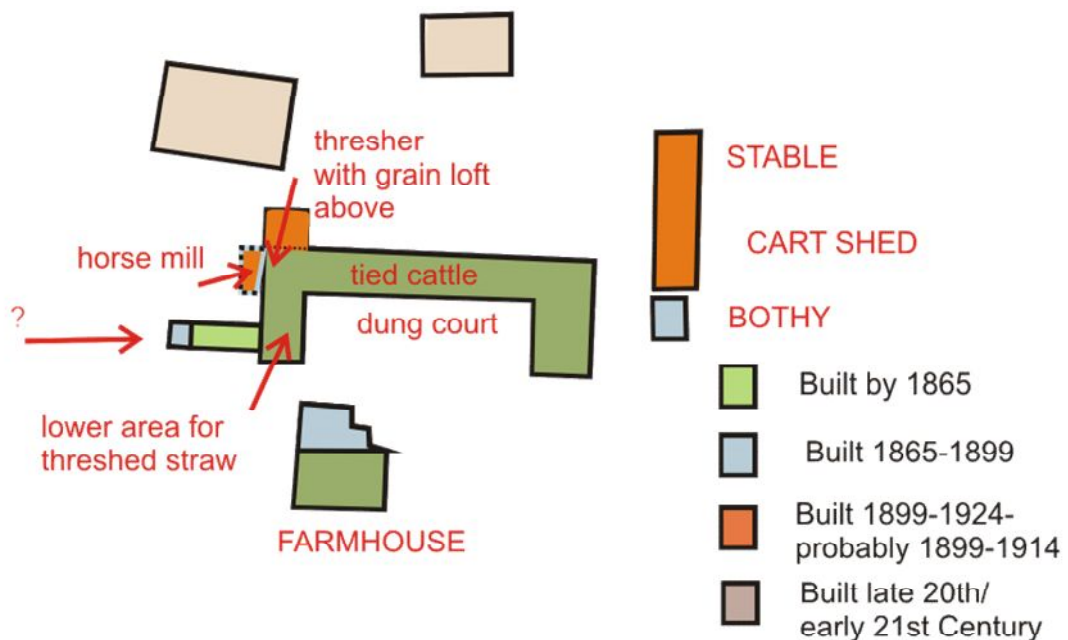


**Illus 44 Farmhouse W elevation**

## 7 Discussion

This is a good example of a 19<sup>th</sup>-century Aberdeenshire steading. It would appear to have been a moderately prosperous farm as both the steading and the farmhouse were added to during the second half of the century.

Prior to 1865, the farmhouse was a rectangular block. The steading comprised Building 1 and B1a and at this point it is probable that the stables and cart shed were in the E range, with the hay loft above. During the second half of the century, the house was almost doubled in size and a bothy built. Between 1899 and the 1924 OS map, a new freestanding cart block and stable with stalls for 8 horses was built to the E; this was almost certainly built prior to the outbreak of WW1 in 1914, as after that war the shortage of horses led to increasing mechanisation. The horse mill, which had been in the W range in 1865, was enclosed (but not roofed) by 1899. By 1924 it has been replaced by a small outshot (B1b) which would have housed an engine to run the threshing machine in place of horse power- this is most likely to have happened post WW1, between 1918 and 1924.

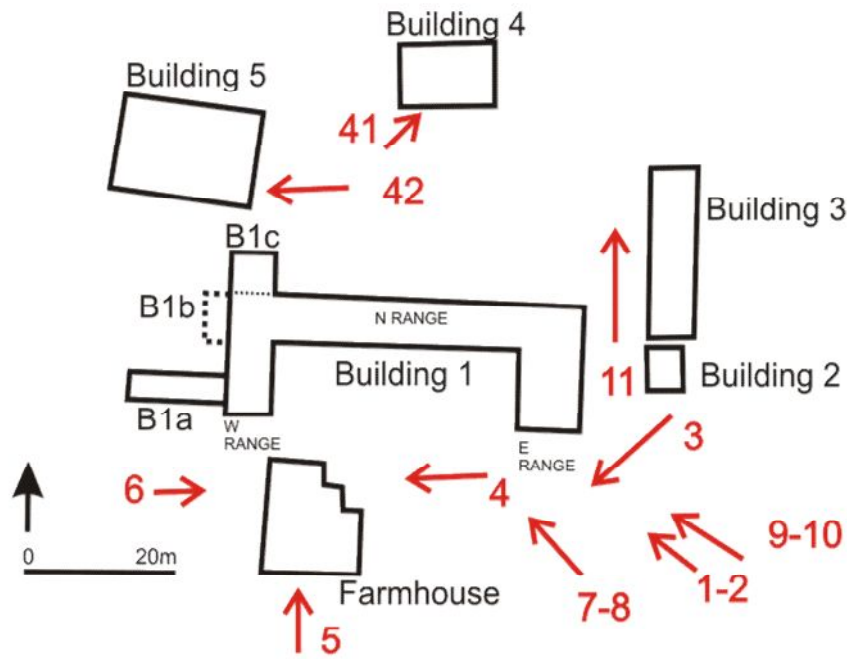


Illus 45 Interpretation of buildings with approximate dating

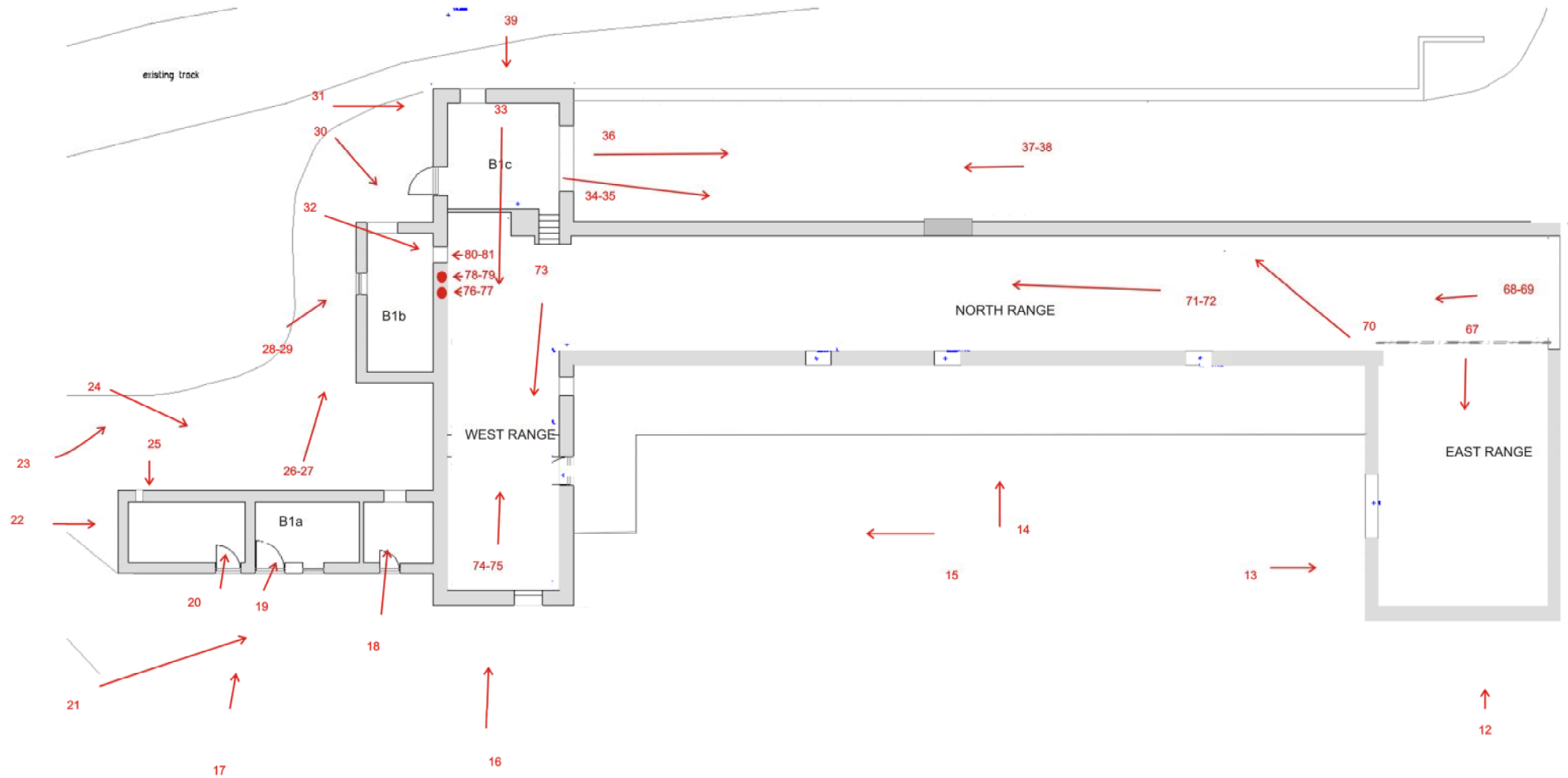


## 8 Archive

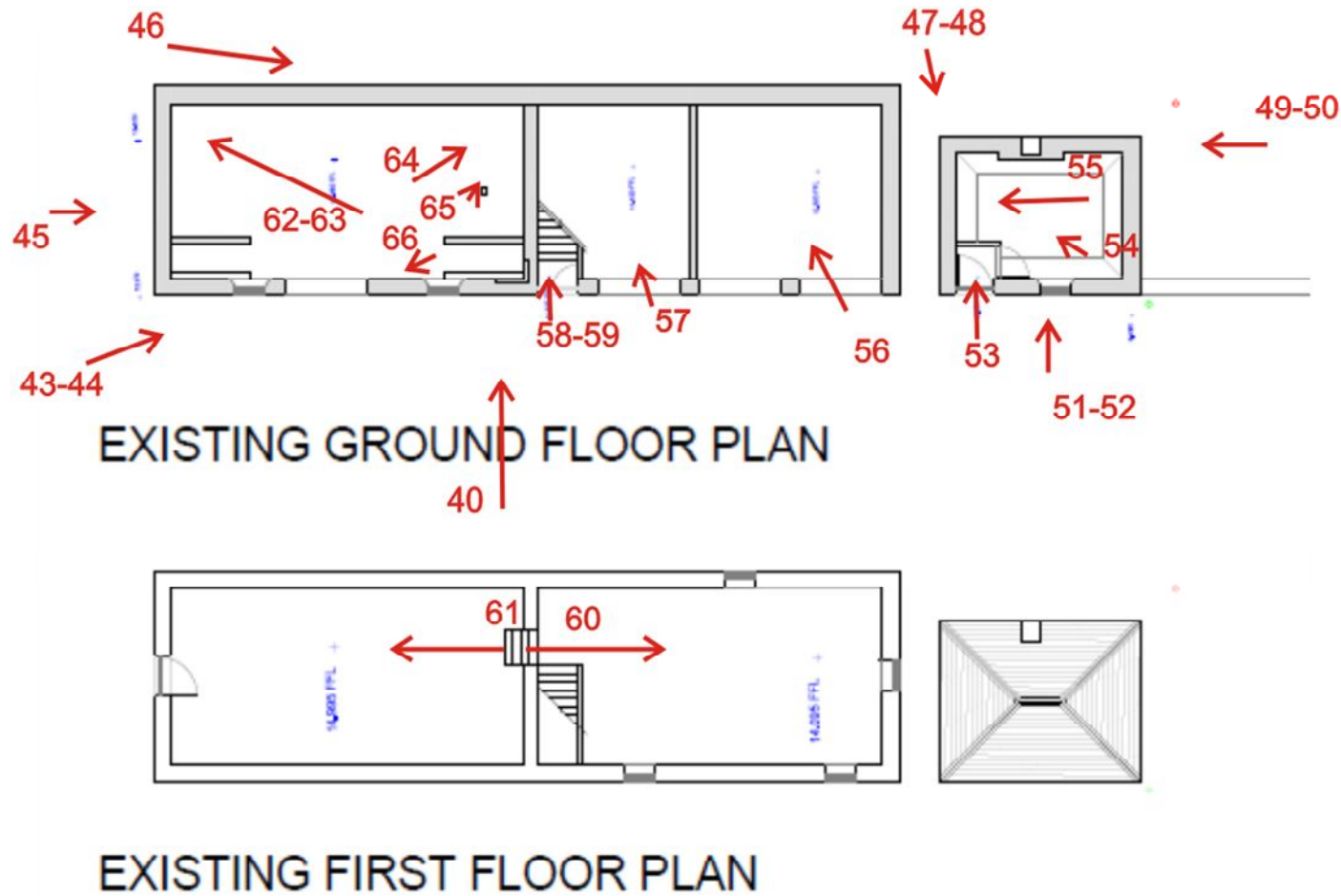
A full set of photographs with the photo location plan (illus 46-48) will be supplied to the Aberdeenshire SMR in Aberdeen and to the NMRS.



Illus 46 General photographs



Illus 47 Photographs Building 1 Drawing courtesy of William Lippe Architects Ltd, annotated by MAS Ltd



Illus 48 Photographs Buildings 2 & 3 Drawing courtesy of William Lippe Architects Ltd, annotated by MAS Ltd