

CRAIGSTON CASTLE STEADING
TURRIFF
ABERDEENSHIRE



Standing Building Survey

Carried out 27th July 2017

by

Murray Archaeological Services Ltd



Report No: MAS 2017-17

by

H K Murray and J C Murray

H K Murray BA, PhD, MCIfA, FSA Scot

J C Murray BA, MCIfA, FSA Scot, FMA

Hill of Belnagoak, Methlick, Ellon, Aberdeenshire AB41 7JN

Telephone: (01651) 806394 e-mail: cmurray@btinternet.com

CRAIGSTON CASTLE STEADING

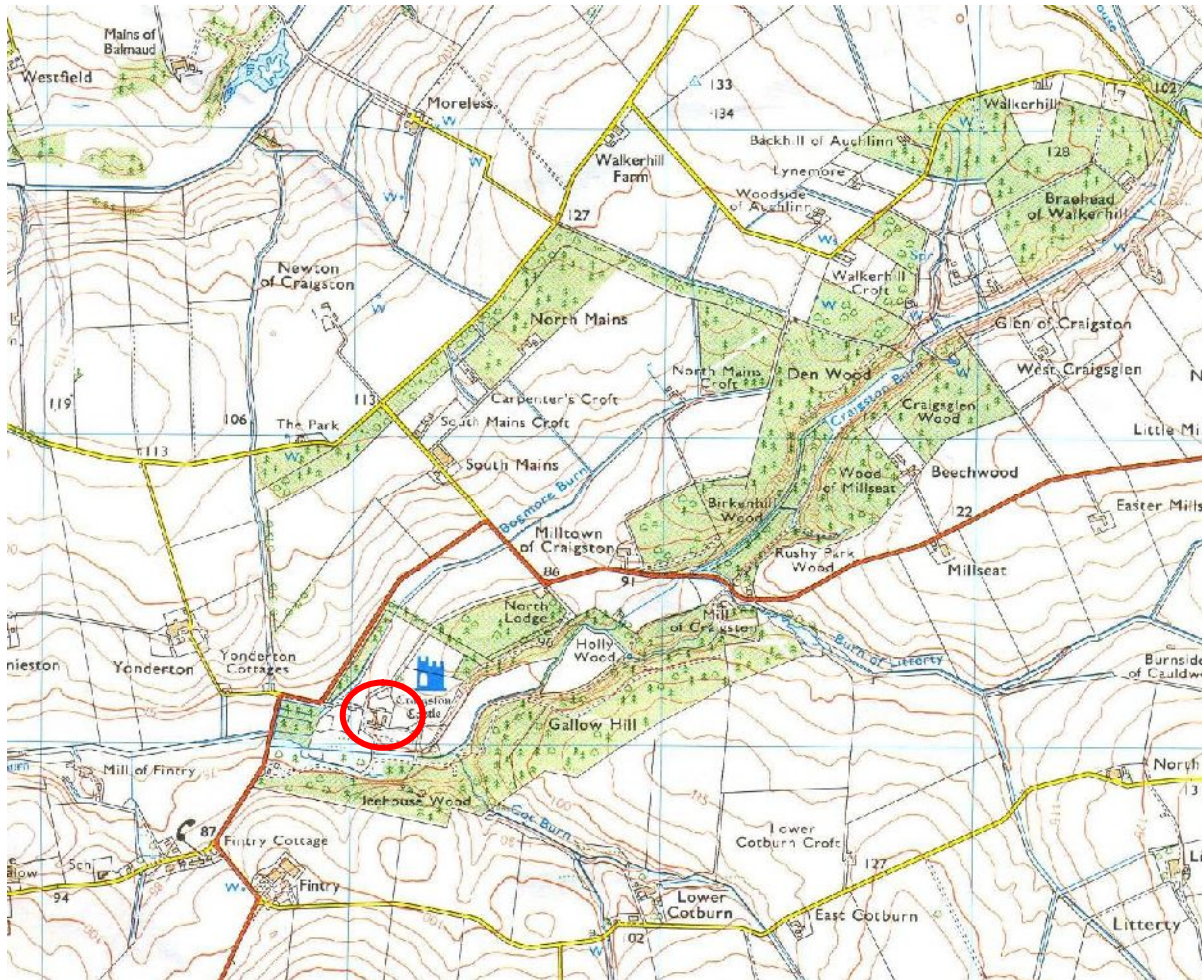
TURRIFF

ABERDEENSHIRE

- Standing Building Survey -

1. Background
 - 1.1 A standing building survey was required for a steading at Craigston Castle, Turriff, Aberdeenshire, prior to its renovation and conversion into seven holiday lets.
 - 1.2 The archaeological condition was applied in the context of planning legislation (PAN 2/2011, SPP, SHEP), which states that it is necessary for developers to arrange for archaeological work to take place prior to development, in appropriate circumstances. Planning Application Number: Planning Application Numbers: APP/2013/0657, 0694.
 - 1.3 A Level 1 Standing Building Survey was required which includes measured plans and elevations, a written account of the building's plan, form, function, age and development sequence in addition to a photographic survey of the interior and exterior of the building.
 - 1.4 Murray Archaeological Services Ltd was commissioned to undertake the work by Mantell Ritchie Chartered Architects on behalf of their client William Urquhart. The site element of the survey was completed on the 27th July 2017.
2. Desk-top survey
 - 2.1 A search was carried out in the Sites and Monuments Record, Archaeology Service, Aberdeenshire Council and in the Sites and Monuments Records of the Royal Commission for Ancient and Historic Monuments in Scotland (RCAHMS, now HES) through Canmore and Pastmap.
 - 2.2 The 1st and 2nd edition Ordnance Survey maps were consulted.

- 2.3 Gordon Slade's article on Craigston Castle (1976) includes a description of the steading in the 1970s and an invaluable discussion of the documentary sources in the estate archives. (Note that there is a discrepancy with the position of N in Slade's article).
- 2.4 Plans and elevations were supplied by Mantell Ritchie Chartered Architects and annotated as necessary by MAS Ltd.



Illus 1 Detail of OS map. Ordnance Survey © Crown copyright (2007) All rights reserved. Licence number (100049810). Site indicated by red circle.

3. The Site

- 3.1 The site lies about 5km NE of Turriff, to the E of the B9105.

Parish: King Edward

NGR: NJ7609 5508 (steading general)

GPS in centre of Steading: 376100, 855089

Aberdeenshire SMR: NJ75NE0014

NMHE: NJ75NE2

Listed Building: LB9394 Category B

4. Documentary evidence

1747-55 Roy's Military Map of 1747-55 shows the Craigstone (sic) estate but with no details of the buildings- the steading would have been of little military significance.



Illus 2 Detail from Roy Military Map 1747-55.

<http://maps.nls.uk/geo/roy/#zoom=15&lat=57.5881&lon=-2.3940&layers=roy-highlands>

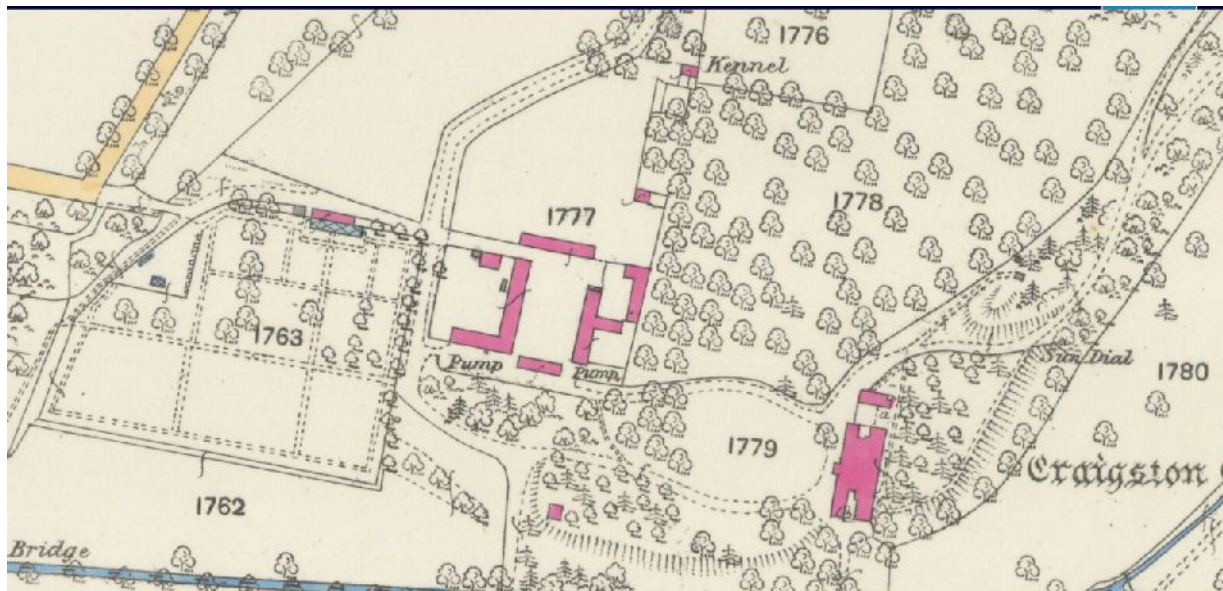
1753 A *Plan of the Court of Barnyards* in the Craigston archives (not accessed) shows an intended plan of the steading. This was not built but formed a basis for the final layout (Slade, 1976).

1766 William Urquhart (d. 1796) began the building of the farm buildings (Slade 1976, 267-8)

1777 Survey by William Urquhart *A Plan of the policies of Craigston*. in the Craigston archives (not accessed). The plan shows the 18th-century steading (Slade 1976).

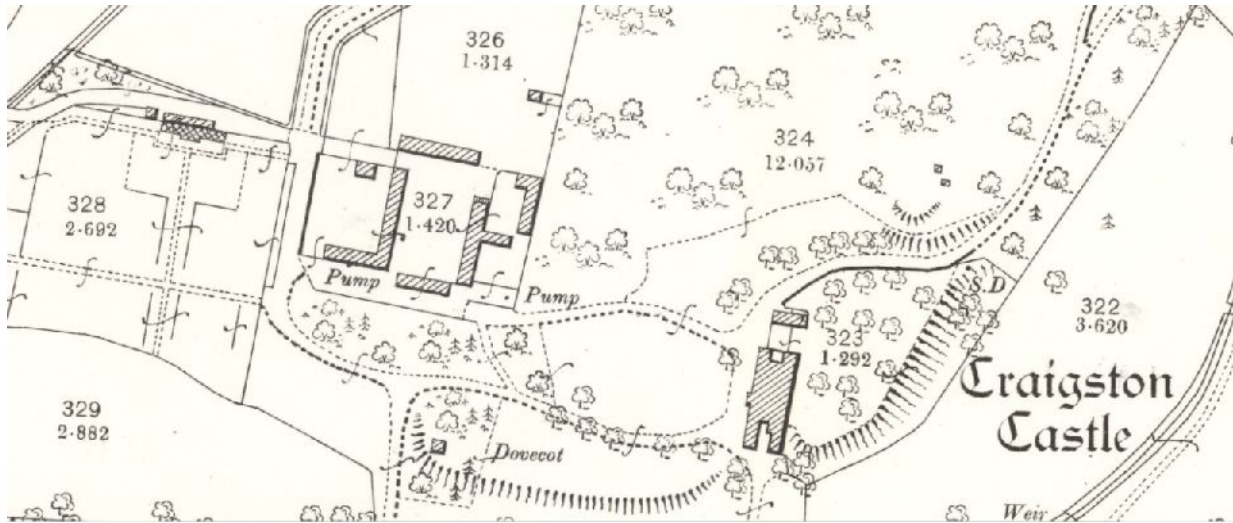
1822 Farm buildings extended by William Urquhart (grandson of the earlier William) (Slade 1976, 267-8).

1870 OS map Aberdeen sheet XI.3 (published 1874) shows all the buildings that survive to 2017, or the foundations of which survive. The E range had an extension to the E from the centre of the building; this no longer survives.



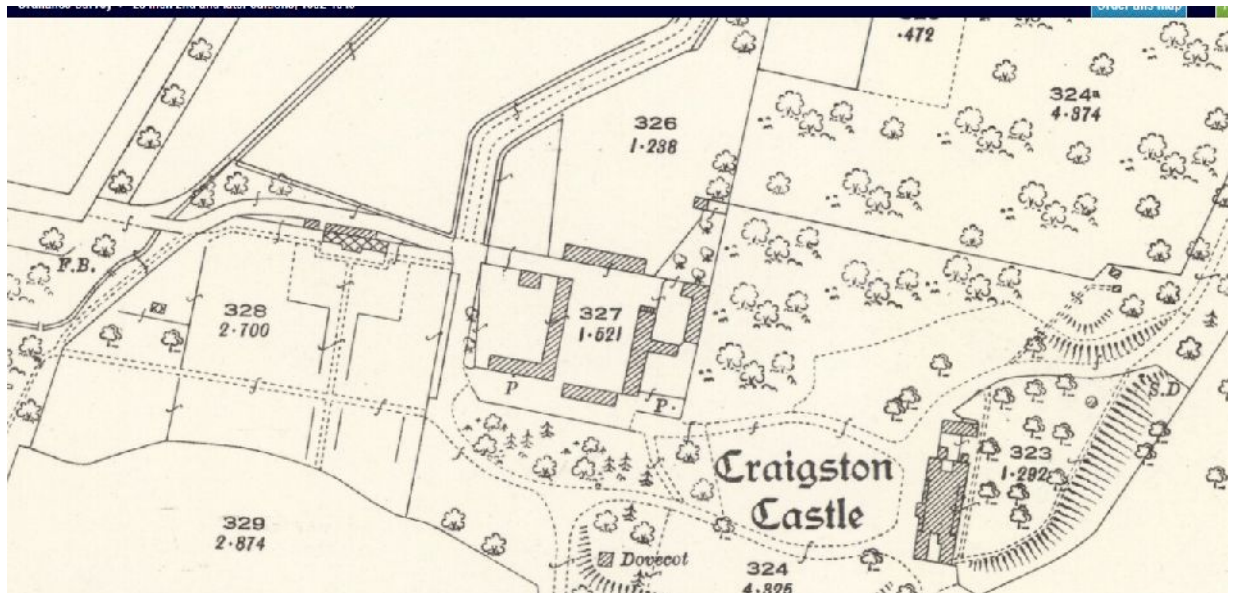
Illus 3 Detail of the 1st edition Ordnance Survey 25" map, Aberdeen sheet xi.3 1870 (pub 1874)
www.nls.ac.uk

1900 On the 2nd edition 25"/mile Ordnance Survey of 1900 (published 1902. Aberdeenshire sheet 011.03) the steading remains as it was in 1870.



Illus 4 Detail of the Ordnance Survey 25" map, Aberdeenshire sheet 011.03 1900 (published 1902) www.nls.ac.uk

1925 On the 2nd edition 25"/mile Ordnance Survey of 1925 (published 1926). Aberdeenshire sheet 011.03) the steading remains as it was in 1870.



Illus 5 Detail of the Ordnance Survey 25" map, Aberdeenshire sheet 011.03 1925 (published 1926) www.nls.ac.uk



Illus 6 General view of steading from beside Slaughter House, looking NNW

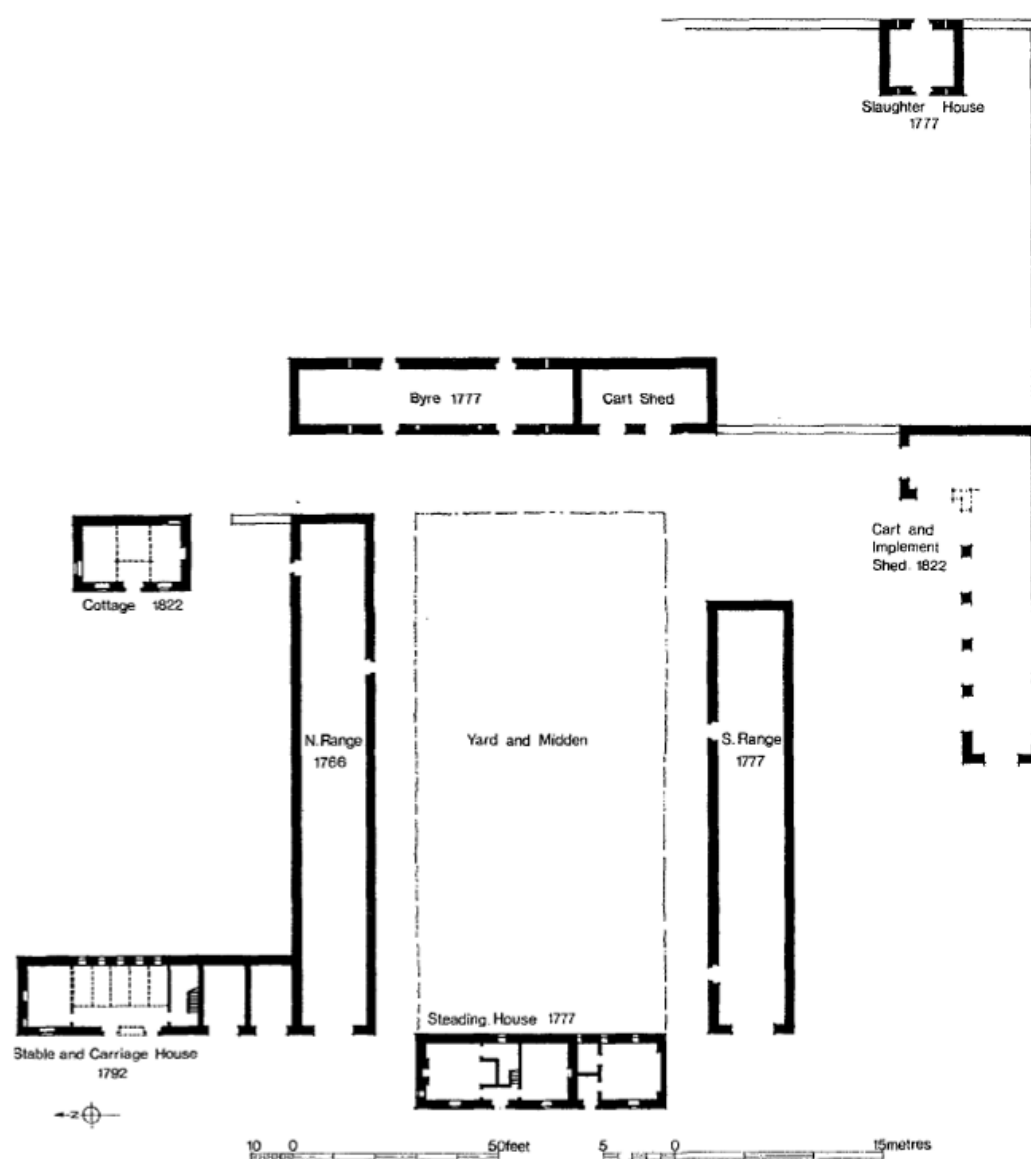
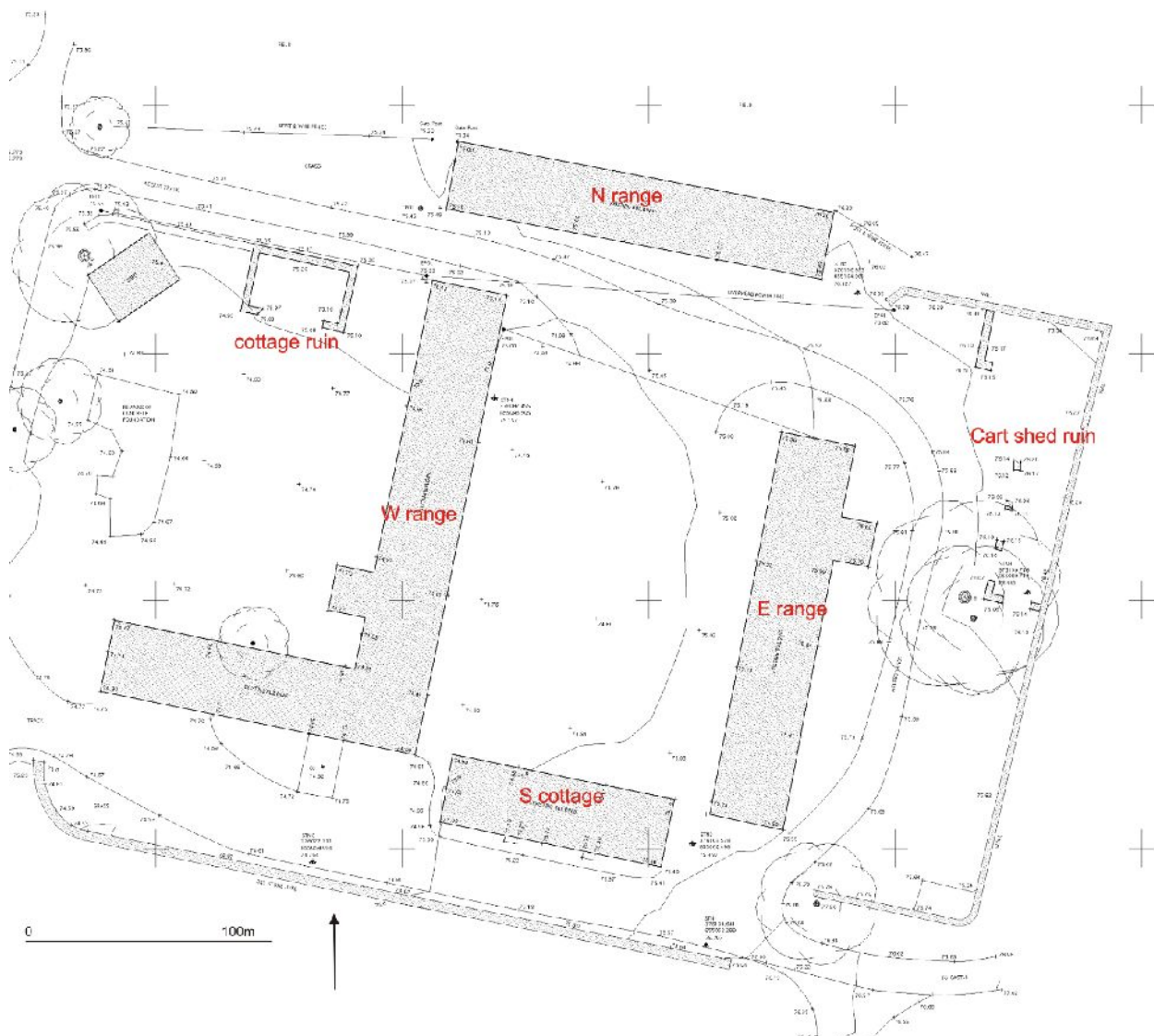


FIG 5 Craigston Castle: the barnyard and farm buildings

Illus 7 Plan of the farmyard published by Slade (1976, fig 5) (note this appears to be orientated differently in regard to N, so the building names (N Range etc) are different from those used in this report)

5 Methodology

- 5.1 The ground plans and elevations have been annotated to show details which may help in understanding the development and history of the building.
- 5.2 The areas recorded were photographed and catalogued. The full set of photographs will be supplied for the archive.



Illus 8 Site plan. Based on drawing courtesy of Mantell Ritchie. (drawn Satellite Architects 2010.)

6 The Buildings

For ease of reading, approximate compass positions have been used throughout. Note that Slade (1976) appears to have incorrect N position.

In its final extent, the steading comprises four buildings set around a rectangular court c. 43 x 24m. The secondary S stable wing of the W range and the later, NW cottage (now a ruin) almost form a second court to the W. The early 19th-century cart shed (also in ruins) lies parallel to the E side of the E range. The slaughter house lies slightly separate from the main court, to the NE- and conveniently near the kennels for feeding offal etc to the dogs.

The main drive from the N lodge and the drive in from the W past the walled garden both meet to the W of steading and then divide with one road entering the court and another passing between the walled garden and the W side of the steading and curving around the S of the steading towards the castle.

N Range

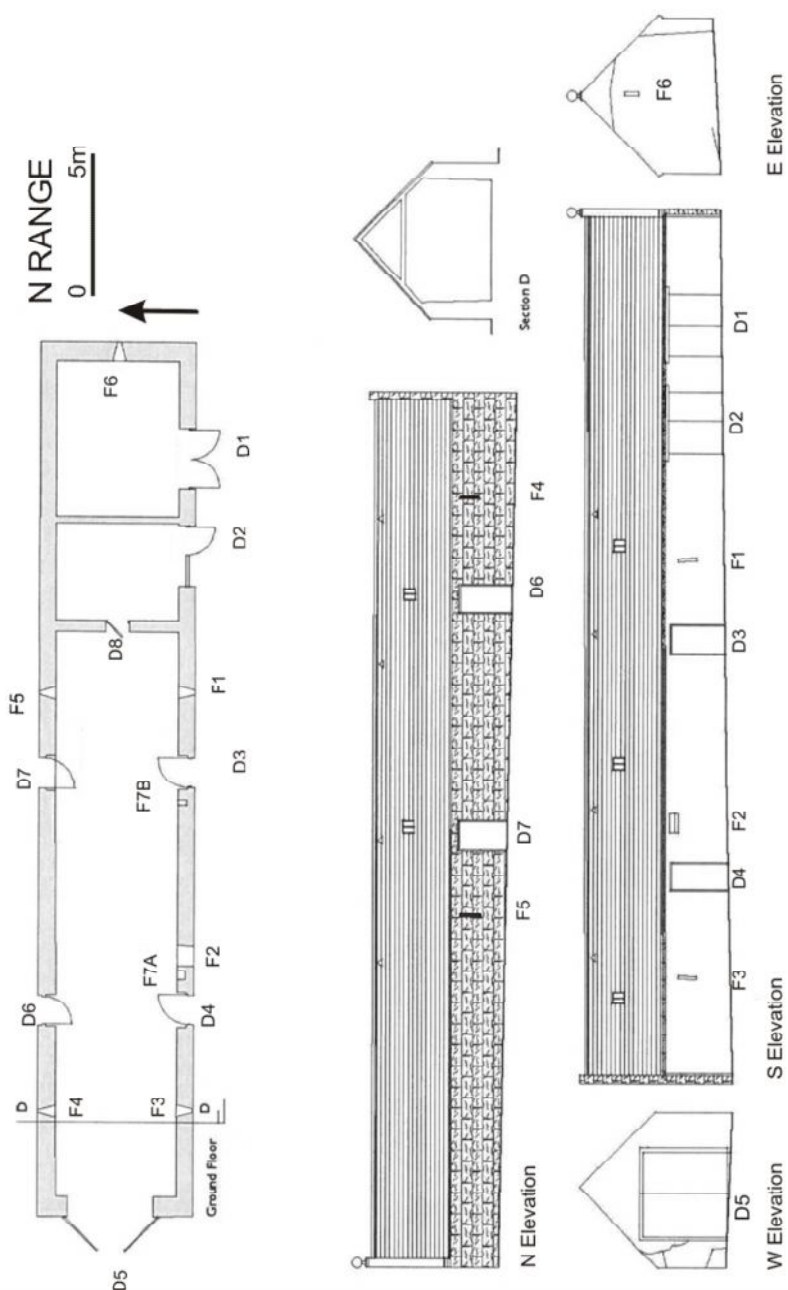
Slade (1976, 283-4) dates this building to 1777. The stonework is identical to the slaughter house which has 1777 date stone above door.

Orientation E/W facing S into court.

Dimensions 5.5 x 31m externally

Present/recent use Storage

Original use Byre at W end, probably cart at E end.



Illus 9 N Range. Plan and elevations. Drawings courtesy of Mantell Ritchie, annotated by MAS Ltd.

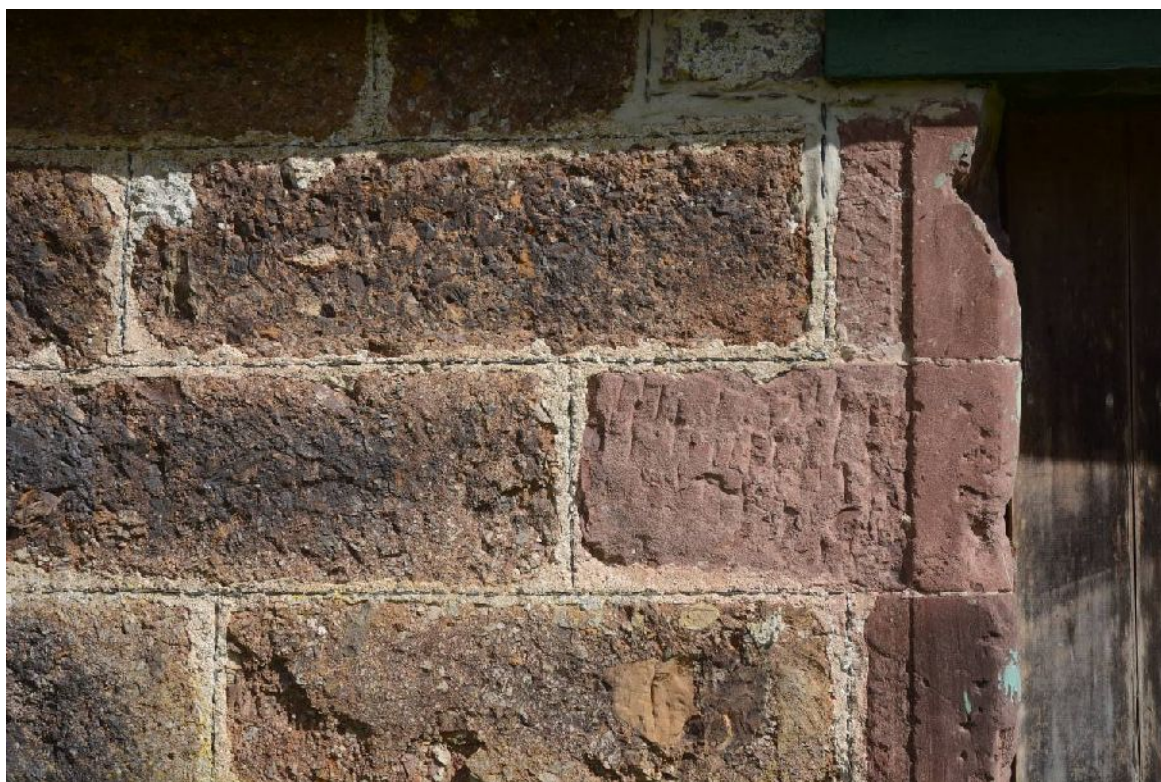


Illus 10 N Range. S wall facing into court



Illus 11 N Range. N wall

Walls Orange/pink conglomerate in large very regular blocks with cherry pointing. Red sandstone quoins at corners and for skew stones.



Illus 12 Detail of S wall of N Range, to W of door D2



Illus 13 N Range E gable

Roof Slate over A couples with sarking. Ball finial at E gable.

Skews red sandstone with rolled moulding at skeuputt (Illus 14)..



Illus 14 Skewputt at SE corner

Doors and windows

S wall

D1 W: 2.20m H:1.90 Red sandstone rybats with dressed margins(Illus 12).
Timber lintel. Modern replacement doors.

D2 W: 2.15m H: 1.87m Red sandstone rybats with dressed margins (Illus 15). Modern replacement doors.



Illus 15 Cart door D2

D3 W: 1.07m H: 1.90m Red sandstone rybats with dressed margins. Red sandstone lintel. Stone sill. (Illus 16). Plank door.



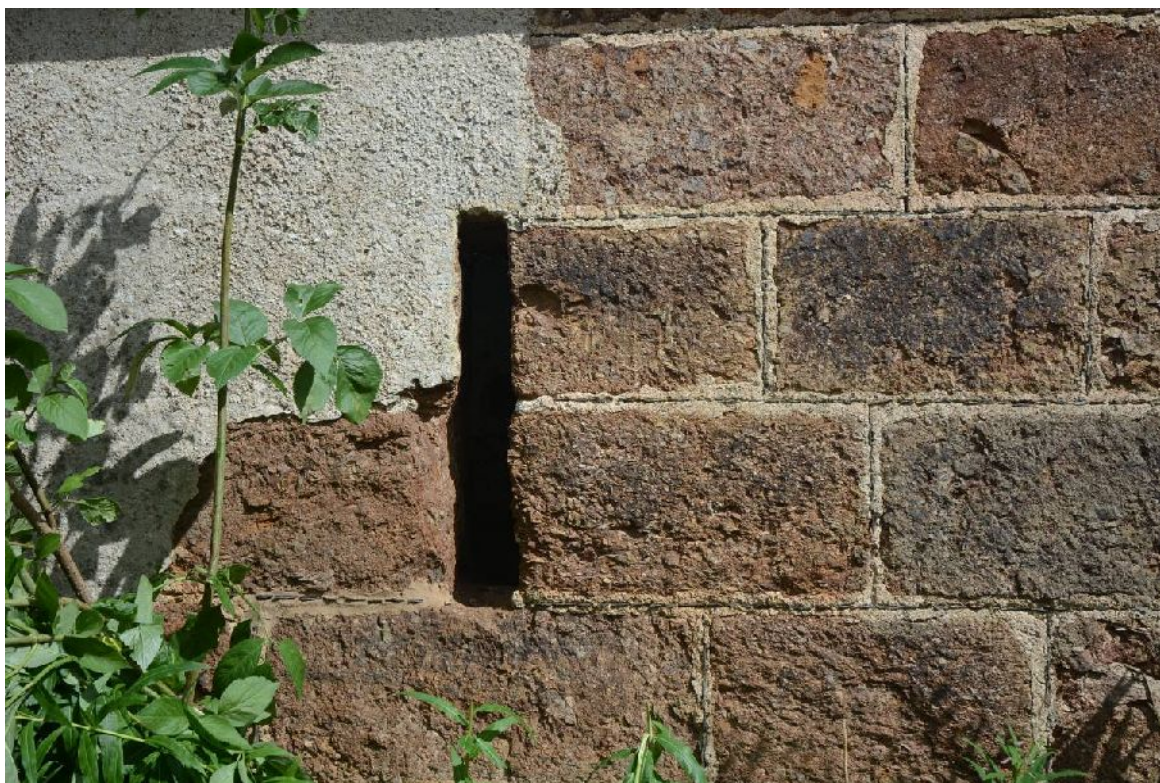
Illus 16 Byre door D3

D4 W: 1.07m H: 1.90m Red sandstone rybats with dressed margins. Red sandstone lintel. Stone sill. Plank door.

F1 Vent. W: 140-160mm, splays internally. H: 650mm. Set as angled slot between wall stones, no sandstone.

F2 Vent. W: 650mm H: 320mm with lower part blocked by a secondary concrete slab leaving gap of 160mm at top. Slab projects 460mm from wall face. Set as slot between wall stones, no sandstone.

F3 Vent. W: 90-130mm, splaying to 310mm internally. H: 650mm Set as angled slot between wall stones, no sandstone. Illus 17-18.



Illus 17 **Vent F3 external**



Illus 18 **Vent F3 internal**

W wall

D5 W: 3.10m H: 2.90m. Widened and raised, with brick and concrete at sides, concrete lintel.

N wall

D6 W: 1.07m H: 1.73m. Red sandstone rybats and lintel with dressed margins.
Plank door.

D7 W: 1.07m H: 1.64m. Red sandstone rybats, lintel conglomerate stone. No door.

F4 Vent. W:80mm, splaying to 390mm internally. H: 0.66m. Red sandstone margins.

F5 Vent. W:80mm, splaying to 490mm internally. H: 0.73m. Red sandstone margins.

E wall

F6 Vent. W:100mm, H: 0.50m (estimate). Red sandstone margins.
Internally this gable has a ledge at just about the level of the side walls.

Interior



Illus 19 N Range interior, looking E to cross wall.

The interior was divided by a cross wall, with the wide doors D1 and D2 opening into the E end which can be interpreted as a cart shed. The W end, with narrow doors and plenty of air vents is likely to have been a byre but no traces of any internal arrangements survive.

- D8** W: 0.76m. H: 1.84m. Plank door. Between the 2 rooms.
- F7a** Alcove on inner face S wall. W: 360mm. H: 420mm. Depth into wall: 300mm
- F7b** Alcove on inner face S wall. W: 290mm. H: 450mm. Depth into wall: 290mm

South Cottage

Slade (1976, 283-4) dates this building to 1777. A date stone at the SW skewputt reads 1823; if Slade's dating is correct, the date stone must refer to repairs which appears odd. Certainly the date stone itself is very similar in both the shape of the skewputt and of the lettering of the other 1823 date stone- on the E cart shed. However, although the stonework of the walls is obscured by harling, this S cottage does not appear to share the other characteristics of the two buildings (NW cottage and E cart shed ruin) which Slade dates to 1822. The dating therefore remains ambiguous.

Orientation E/W facing S onto driveway.

Dimensions 5.53 x 18.3m externally

Present/recent use Had been used as bothy for scouts/walkers.



Illus 20 N wall of cottage onto central court



Illus 21 S wall of cottage onto driveway

Original use Farm workers' accommodation. E end grieve's house with two ground floor rooms and attic room above. W end room and closet.

Walls Harled. Red sandstone quoins and margins exposed.

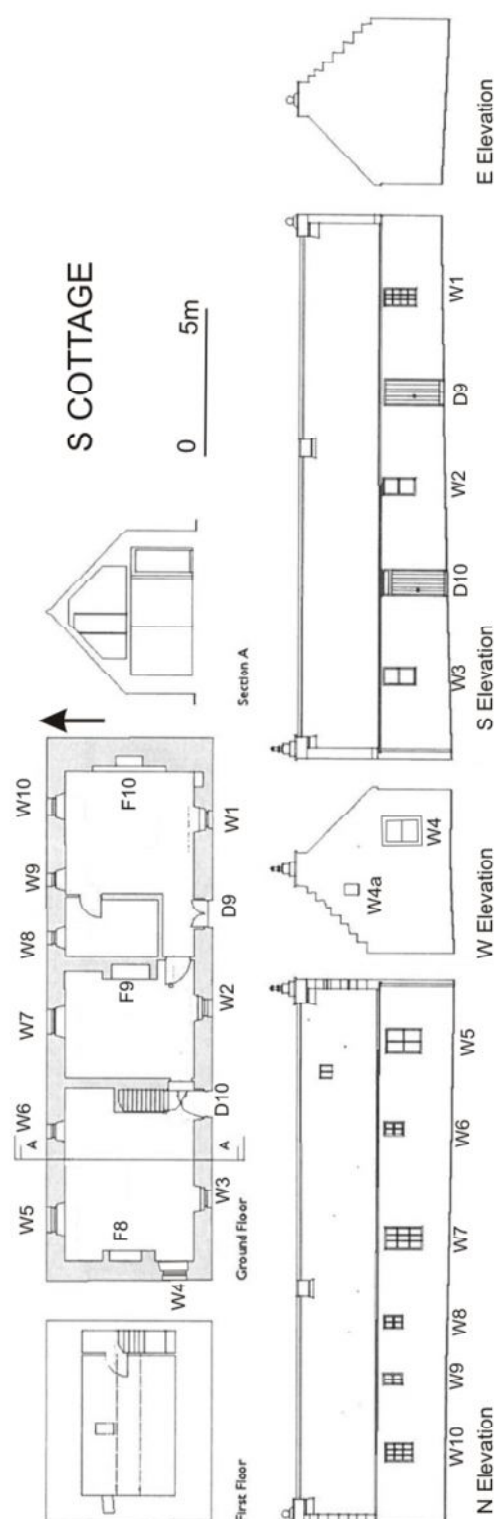
Roof Slate.

Chimneys at E, W and centre.

E chimney: Rectangular. Red sandstone with flat table. Blocked with awkwardly placed ball finial.



Illus 22 E gable of cottage



Illus 23 S Cottage. Plan and elevations. Drawings courtesy of Mantell Ritchie, annotated by MAS Ltd.

W chimney: Rectangular with flat table. Harled. Topped by carved ornamental stone (Slade, 1976, 284, notes that these carvings are from Carnousie). Functional modern metal chimney pipe using flue.

Centre chimney: Red sandstone. Only part remaining.

Skews of red sandstone. N skews of both gables crow-stepped, S plain.

SW skewputt with date 1823



Illus 24 Date stone on SW skewputt.

Doors and windows



Illus 25 Cottage. S wall.W1.



Illus 26 Cottage. S wall D9

S wall

D9 W: 0.91m H: 1.97m. Red sandstone rybats and lintel. Plank door.

D10 W: 0.91m H: 1.97m. Red sandstone rybats and lintel. Plank door with glass light above.

W1 W: 0.63m H: 1.07m. Red sandstone rybats, lintel and sill. 6/6 pane sash window.

W2 W: 0.63m H: 1.07m. Red sandstone rybats, lintel and sill. 1/1 pane replacement sash window.

W3 W: 0.63m H: 1.07m. Red sandstone rybats, lintel and sill. 1/1 pane replacement sash window.



Illus 27 W gable with crow stepping to N. Arrow marks date stone.

W wall

W4 W: 0.61m. H: 1.23m. Red sandstone rybats, lintel and sill with clear tooling marks.

N wall

W5 W: 0.84m. H: 1.21m. Margins harled. 2/2 pane sash window.

W6 W: 0.44m. H: 0.65m. Margins harled. 2/2 pane sash window.

W7 W: 0.81m. H: 1.25m. Margins harled. 6/6 pane sash window.

W8 W: 0.44m. H: 0.65m. Margins harled. 2/2 pane sash window.

W9 W: 0.44m. H: 0.65m. Margins harled. 2/2 pane sash window.

W10 W: 0.62m. H: 0.93m. Margins harled. 6/3 pane sash window.

E wall

Iron pivots for a gate to block entry to court.on N side.

Interior

W part of cottage : Comprises lobby opening to rooms on either side at ground level and stair ahead to attic floor.

W room

F8 Fireplace. Arched. Partly replaced with brick and narrowed on S side. W: 1.33m (alcove) H: 1.37m to base of centre of arch. Re-used with oil-drum stove.



Illus 28 W room of cottage. Fireplace F8.

Centre room

F9 Fireplace. Red sandstone sides, granite lintel. Brick lining at back. W: 1.28m. H: 1.13m. Plank ceiling.



Illus 29 Central room, looking E to fireplace F9

Attic

Stair blocked in with pine planking. Attic not entered.

Roof light to W attic.



Illus 30 Cottage. Stair to attic floor from lobby inside door D10

E part of cottage: Comprises Ground floor room with partitioned closet, recently converted to chemical toilet.

E room

Plank ceiling.

F10 Fireplace. Wide red sandstone arch. Could not be accessed to measure.



Illus 31 E room of cottage with fireplace F10.

E Range

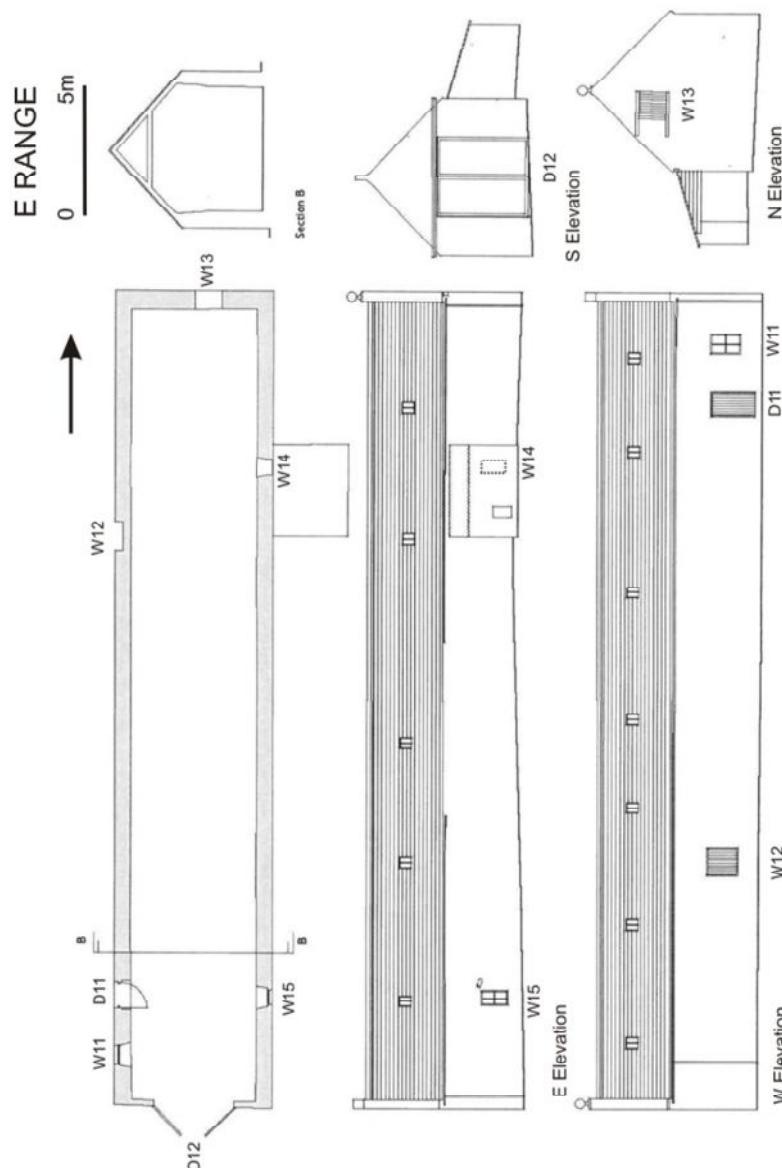
Slade (1976, 283-4: Note this is named 'S Range' in Slade) dates this building to 1777.

Orientation N/S. Faces W into court.

Dimensions 6 x 31.5m externally

Present/recent use In 1950s converted for grain with grain dryer. Recent use: storage.

Original use Uncertain. Probably cattle byre (although no air vents but this is uncertain as walls rendered internally and externally) with loft above- probably for grain.



Illus 32 E Range. Plan and elevations. Drawings courtesy of Mantell Ritchie, annotated by MAS Ltd.



Illus 33 E Range. W wall facing into court.



Illus 34 E Range. E wall.

Walls Externally cement harled. Two areas have been cleaned back to stonework. On E wall this shows conglomerate rubble stone (Illus 35). At E side of S gable, there is rubble stone with some thin flat slabs used into corner (Illus 36).



Illus 35 E range, E wall stonework exposed.



Illus 36 E range, S gable E side, stonework exposed.

Roof Slate with metal roof lights.

Ball finial to N (Illus 37), grotesque carving on finial to S (Illus 38).



Illus 37 E range. Finial at N apex



Illus 38 E range. Finial at S apex

Doors and windows

W wall

D11 W:1.02m H: 1.70m red sandstone rybats and lintel.

W11 W:0.74m H:1.15m. Concrete margins. 2/2 pane sash window

W12 W:1.07m H: 1.22m Red sandstone rybats and lintel with rebate 60mm deep for door/shutter. Blocked internally with planks.

N wall

W13 Loft window/door. Not measured. Sliding wooden shutter. A drawing of 1954 (Canmore DP238836) shows steps up the face of the gable to the loft.



Illus 39 E Range. N gable with loft door/window W13

E wall

W14 W: 470mm H: 790mm. Harled surround but rybats and sill appear to be red sandstone. Blocked.

W15 W: 0.61m H: 1.04m. Red sandstone rybats, lintel and sill. 2/2 pane ash. Barred.

S wall

D12 W: 3.06m. H: 3.32m. Concrete block sides and lintel.

Interior

The interior had been opened out and concrete lined in 1950s when used for grain. No earlier features survive (Illus 40).



Illus 40 E Range. Interior looking N.

W Range

Slade (1976, 283-4: Note this is named 'N Range' in Slade) dates the N/S part of this building to 1766 and the E/W arm to 1792. There is a 1766 date stone on the SE corner (Illus 43).

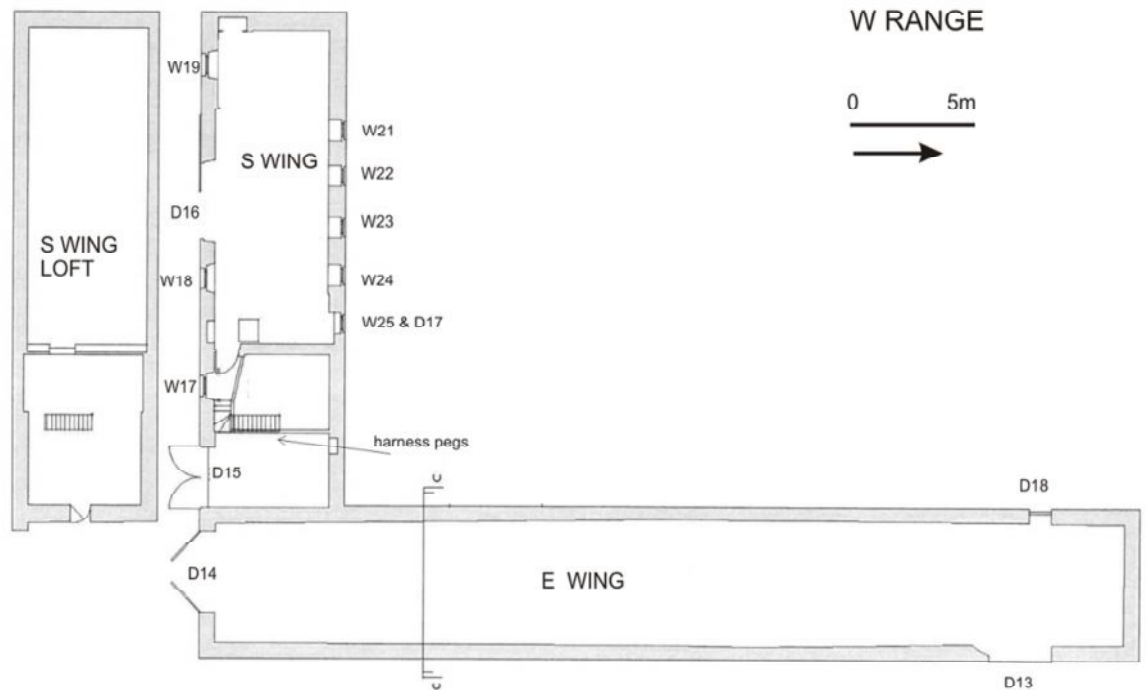
Orientation The W range is L-shaped with the main part (W wing) lying N/S along the W side of court. At the S end, there is another wing (S wing) lying E/W.

Dimensions 6.06m at N gable x 37m N/S along E wall; S wing c 5.7m x 19m externally

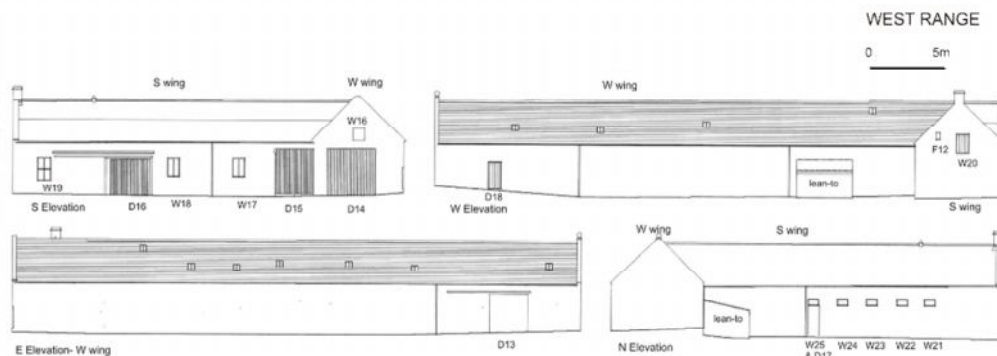
Present/recent use Converted in 1950s for grain. S wing used as workshops.

Original use The E (N/S) wing probably largely used for cattle but no features remain. The S end with wide, originally arched doorway, may have been a turnip shed. There appears to have been a loft/hay loft over at least the S end of this wing. The S (E/W) wing comprised a stable for at least five horses (with one window above each stall), and two rooms- the E room (with wide doors D15 with paving outside) was probably used to house a gig or small carriage; harness pegs suggest that harness was also hung there. The chimney in the W gable suggests that there was a chaumer in the loft for horsemen, although part of this is also likely to have been a hay store.

Walls Concrete harled except for N wall of S wing which is irregular conglomerate blocks. Red sandstone quoins.



Illus 41 W Range. Plan. Drawings courtesy of Mantell Ritchie, annotated by MAS Ltd.



Illus 42 W Range. Elevations. Drawings courtesy of Mantell Ritchie, annotated by MAS Ltd.

Roof Slate. Straight lines from ridge to eaves in the slates on E and W faces of the roof show that there has been some re-slatting or re-structuring of the central part of the roof of the N/S wing of the W range.

Chimney at W gable of S wing. Ball finial at apex of N gable.

Date stone 1766 on SE skeuputt (Illus 43).



Illus 43 W Range. Date stone on SE skeuputt.

Doors and windows

N/S orientated wing

E wall

D13 W: 2.58m H: 2.50m.

S wall

D14 W: 3.27m H: 3.10m Margins harled. Wooden lintel. Slade (1976, 284) notes that in a drawing of the steading on William Urquhart's survey of 1777, there was an arched doorway with double doors in this gable.

W16 Not measured. Loft window. Red sandstone margins.



Illus 44 S wall of L-shaped W Range.

W wall

D18 W:0.93m H: 1.74m. Red sandstone margins. Plank door.

Interior

Not entered. This building, like the E range had been concrete lined in the 1950s and no internal details remain (pers.comm. William Urquhart)

E/W orientated S wing

S wall

D15 W: 2.52m H: 3.10m. Red sandstone rybats.

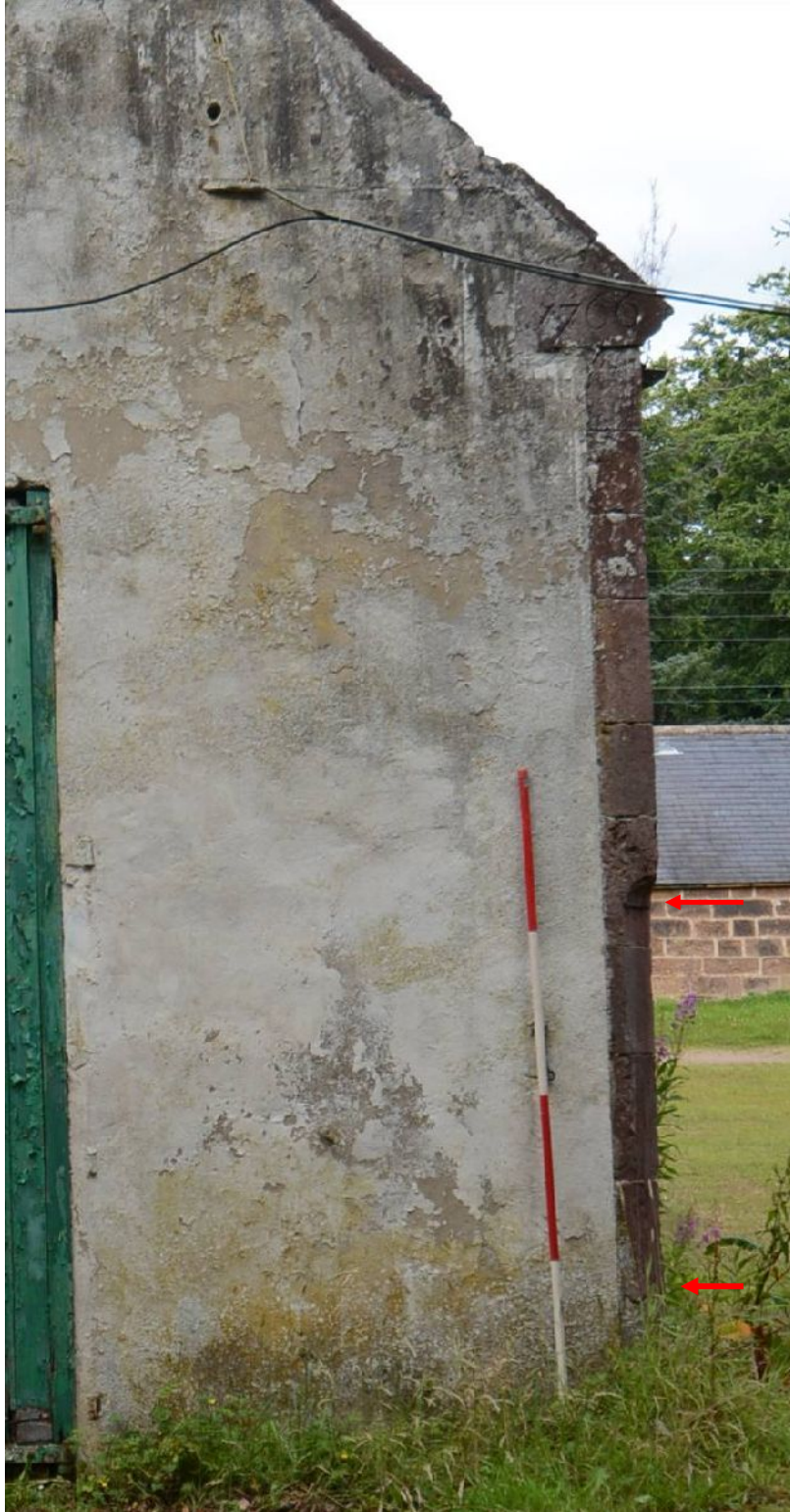
D16 W: 3.04m. H: 2.40m. Red sandstone rybats with rebate for door.

W17 W:0.81m. H: 1.24m. Red sandstone rybats, lintel and sill. Replacement window.

W18 W:0.81m. H: 1.24m. Red sandstone rybats, lintel and sill. Replacement window.

W19 W:0.92m. H:1.54m. Red sandstone rybats, lintel and sill. 2/2 pane sash window.

F11 At SE corner the quoins are chamfered back between 0.20m and 1.65m above ground level. This feature is generally seen to give easier access for carts turning a corner, but could possibly be giving clearance for a gate.



Illus 45 SE corner of W range. Arrows mark chamfering of corner stones.

W wall

W20 Not measured. Loft door/opening. Red sandstone sill and rybats.

F12 Not measured. Air vent or small window to loft?



Illus 46 W gable of S wing of W Range

N wall

W21 W:0.76m H: 0.46m Red sandstone rybats, lintel and sill, all with dressed margins.

W22 W:0.76m H: 0.46m Red sandstone rybats, lintel and sill, all with dressed margins.

W23 W:0.76m H: 0.46m Red sandstone rybats, lintel and sill, all with dressed margins.

W24 W:0.76m H: 0.46m Red sandstone rybats, lintel and sill, all with dressed margins.

W25 W:0.76m H: 0.46m Red sandstone rybats, lintel and sill, all with dressed margins. W25 is set in blocked doorway (D17)

D17 W: 1.00m. H: 1.60m. Red sandstone rybats.



Illus 47 N wall of S wing of W Range with stable windows. Arrow marks W25 set in blocked doorway.

Interior

The N/S wing of W range could not be entered but had been stripped and cement lined in the 1950s.

The S range is in use as a workshop and office, but access to photograph was allowed courtesy of the builder who uses it.

This showed that D15 opened into a former harness room with wooden pegs for harness surviving on the inner face of the W wall (Illus 48).



Illus 48 W Range. Interior of harness room, looking at W wall with harness pegs indicated by arrow.
The interior of the part of the building entered from door D16 showed this was the original stable, with marks of an end trevis still visible on the inner face of the E wall (Illus 49).



Illus 49 W Range. Stable. Scar of end trevis of horse stall (indicated by arrow)

Vertical scars on the inner face of the N wall indicated the former position of the other trevices (Illus 50), indicating that there had been five stalls, corresponding to the windows W21-W25.

The loft was not entered on safety grounds.



Illus 50 W range. Stable, with vertical scars of former stalls

E Cart shed ruin

Slade (1976, 283-4) dates this building to 1822. A date of 1823 is on the SW skeuputt of the N end (Illus 51-52). With the exception of the N wing, it is in ruins.

Orientation L-plan, with longer axis N/S and a shorter wing at the N end lying E/W.

Dimensions Total length N/S c.23m. N wing c 10 x 5m E wing c 18 x 5m.

Present/recent use The N end has been converted to house a biomass boiler.

Original use Cart and implement shed. Window W27 indicates that there had been a loft/hay loft above.

Wall Squared conglomerate blocks with vertical stacks of small pinning stones.

Red sandstone rybats, skews and arches. Two wide shallow arches remain- D19 in the W gable at the N end of the building and D20 at the S end of the N/S wing of

the structure, with window W27 above. Traces of piers along the line of the W wall indicate open cart bays would have extended along that side.

D19 W: c. 2.4m H: c 2.5m (reconstructed) Red sandstone margins.

D20 W: c. 2.4m H: c 2.2m. Red sandstone margins.

W27 W: c 700mm. H: c2.2m. Red sandstone margins.



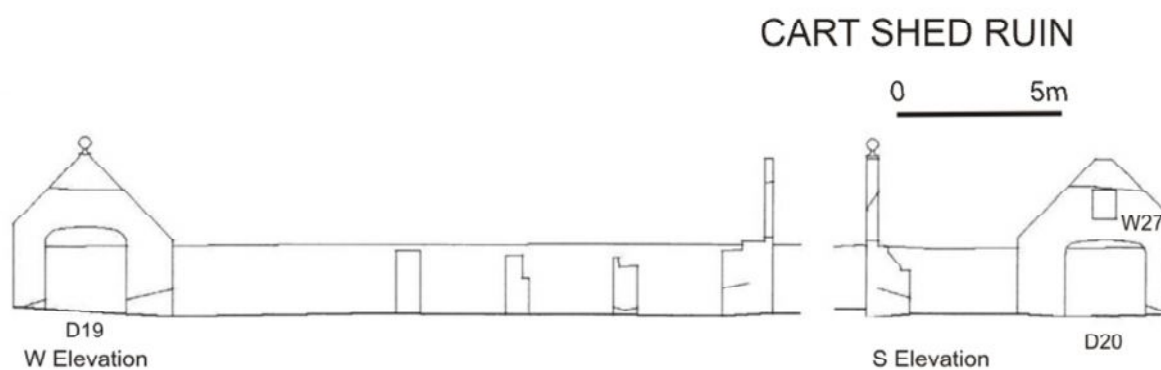
Illus 51 N end of E cart shed converted to house biomass boiler. Arch D19



Illus 52 Date on SW skeuputt



Illus 53 From N end of cart shed, looking towards the inner side of S gable



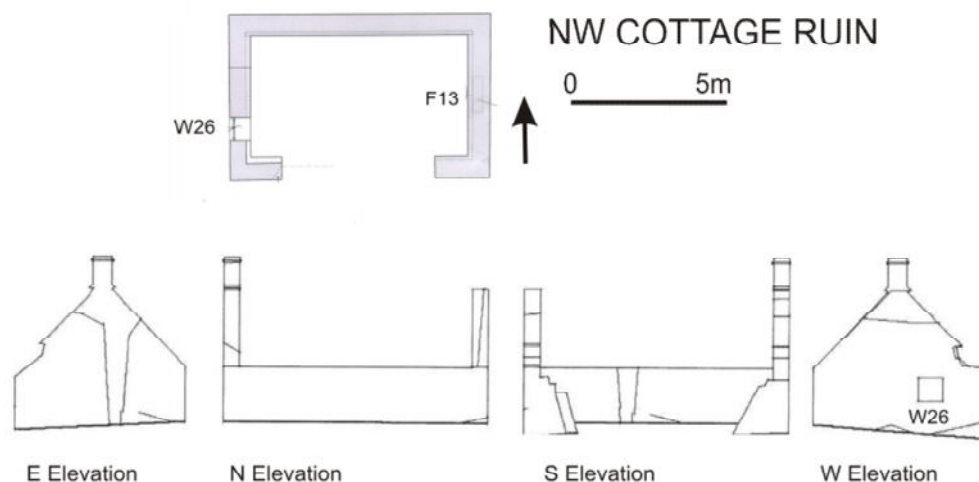
Illus 54 Cart shed ruin. Elevations. Drawings courtesy of Mantell Ritchie, annotated by MAS Ltd.



Illus 55 Cart shed ruin. Inner side of S gable. Arch D20 with W27 above

NW Cottage ruin

This only survives as a roofless shell to the NW of the main steading. Slade (1976, 284 & fig 5) dates this to 1822 and describes it as having had 2 rooms with a garret over. The roof had been of red pantiles.



Illus 56 NW Cottage ruin. Plan and elevations. Drawings courtesy of Mantell Ritchie, annotated by MAS Ltd.



Illus 57 NW cottage ruin, N wall and W gable, looking E

Orientation E/W facing S

Dimensions 8.57 x 5.45m externally

Present/recent use Derelict

Original use Farm workers' accommodation.



Illus 58 NW cottage ruin from S

Walls Conglomerate blocks (500-650 x 350mm) with small vertically stacked pinnings in regular courses. The S wall is missing, traces of sandstone rybats near E end suggest a door or window but no other details survive.

Roof Not surviving.

Chimney at E gable. Red sandstone.

Interior

W26 Window in W wall. Red sandstone rybats and sill, granite lintel. W: 840mm. H: 760mm.

F13 Fireplace in centre of W gable. Red sandstone sides and lintel. Brick repairs at back. W: 930mm. H: 850mm.

Slaughter House

The Slaughter House is not part of the present application but is included here as it is part of the farm complex. It has a date of 1777 on the lintel of the N door.



Illus 59 Slaughter House. Date above N door

Orientation E/W facing S

Dimensions c. 5.5 x 6m

Present/recent use Derelict

Original use On farm slaughter of livestock for meat for the castle., and possibly used for hanging meat (plenty of air vents but no windows).

Walls Orange/pink conglomerate in large very regular blocks with cherry pointing. This building was intended to be viewed from the S as the S wall has markedly more regular stonework than the N wall or gables (cf Illus 60 and 61) Red sandstone quoins at corners and for skew stones.

Both the N and S walls have central door with slot vents on either side. The doors both have red sandstone rybats and lintels, with vent in gable. The S door has ornamental 'canon' on either side. The vents are formed by gaps between stone slabs and have no formal margins.

Roof Slate with ball finials on both apexes.

Interior No original features appear to have survived.



Illus 60 Slaughter House. S wall



Illus 61 Slaughter House. N wall.



Illus 62 Slaughter House. Detail of vent.

7 Discussion

This is an interesting example of an Aberdeenshire steading in estate ownership.

Unlike many smaller groups of farm buildings, this must be seen as merely a part of the complex estate landscape with some functions that are often part of a farm steading being undertaken in separate buildings elsewhere on the estate – for example there are a separate mill, poultry house, kennels etc. A Slaughter House as part of the steading is relatively unusual; the RCAHMS (2008, 108) *Buildings of the Land* shows one on a plan dated 1871 of a large steading at East Barns Farm, East Lothian. However, lacking any lifting gear or other surviving equipment, the original function would have been difficult to identify without the documentary identification.

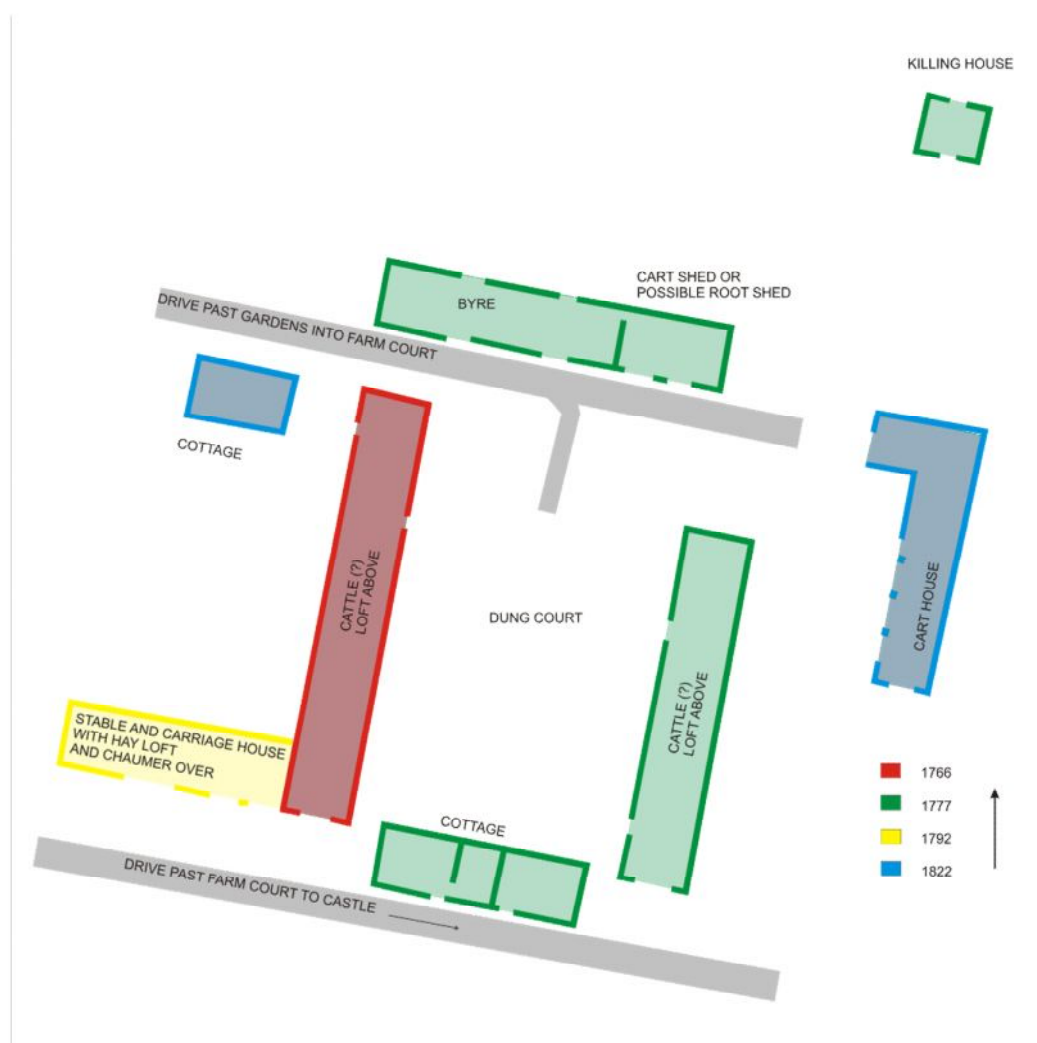
The steading developed gradually over some 60 years between 1766 and 1822/3, becoming impractical in the 20th century when the two long E and W ranges were converted for use for grain drying and storage.

Two of the phases of development – those of 1777 and of 1822/23- are clearly marked in the details of construction that form a fingerprint of the mason or masons involved at each stage.

Two of the buildings dated to 1777 (Slade 1976) have very fine stonework with regular large conglomerate blocks with cherry cocking- in each case especially marked in the ‘display’ S walls facing towards the court. On both buildings the sandstone rybats of the doors have very similar dressed margins, not seen on the other buildings. Also in the S wall of the N range and in the Slaughter House, the air vents are formed by leaving a gap between adjacent wall stones, without sandstone margins (although oddly the vents on the N wall of the N range do have sandstone margins).

Slade (1976) dates two buildings– the E cart shed and the NW cottage- to 1822 (although 1823 if the date stone on the cart shed is correct). Both are built with large conglomerate blocks with vertical stacks of small pinning stones (this can be observed on both the standing gables of the cart shed although caution is needed with the gable at the N end as this has been partially restored for the biomass boiler house). The S cottage is dated by Slade (1976) to 1777 but bears a date stone of 1823. This may simply date repairs but there is a remarkable similarity in the lettering of the two date stones (note the very triangular tail to the ‘2’) and in the very angular shape of the

skeuputts on which the dates are carved (in marked contrast to some of the more moulded earlier skewputts).



Illus 63 Diagrammatic plan of steading after 1822



Illus 64 Sequence of development of steading

8 References

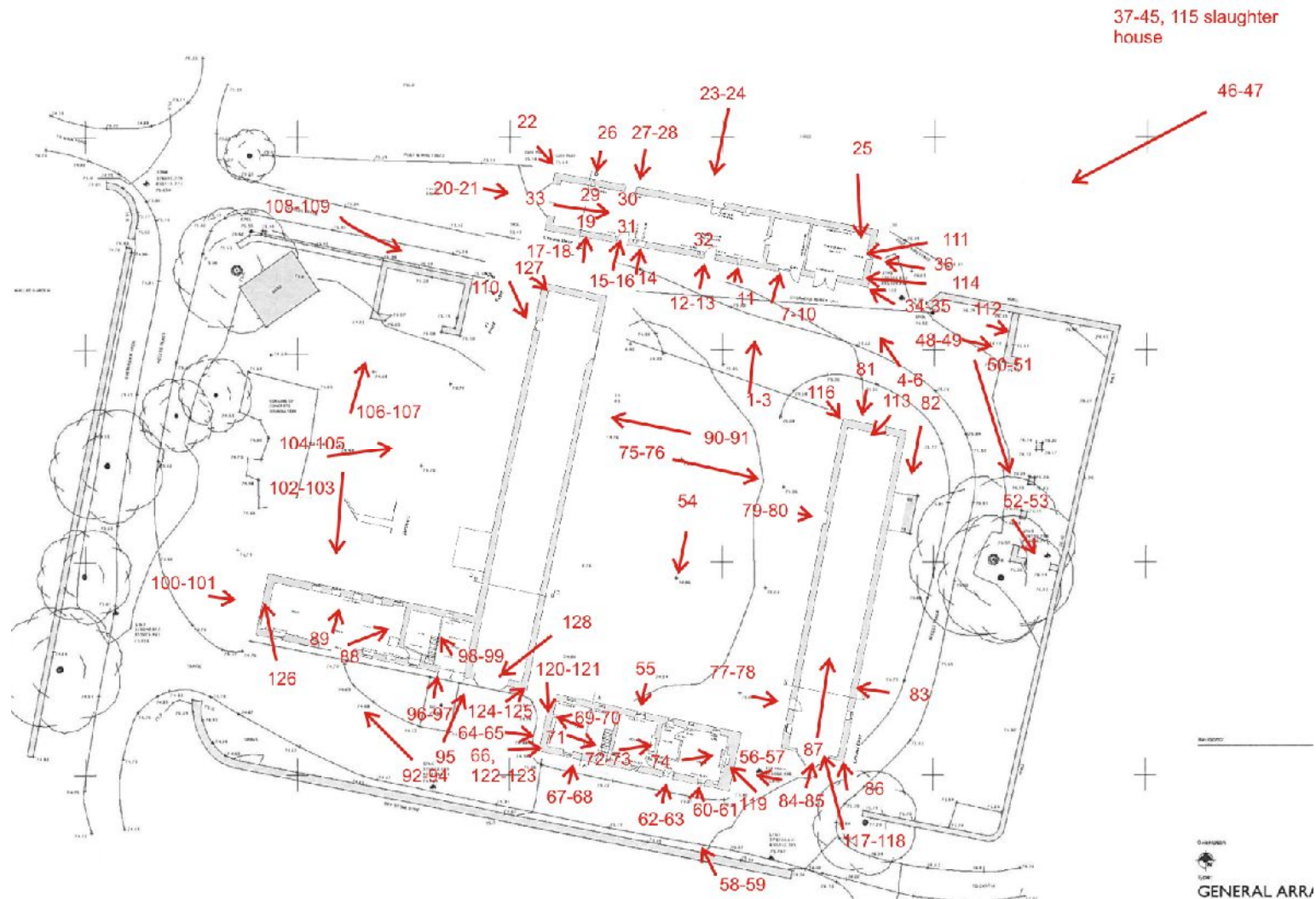
RHAMS 2008 *Buildings of the land*. Edinburgh: RCAHMS.

Slade, G H 1977 'Craigston Castle, Aberdeenshire', *Proc Soc Antiq Scot*,
108, (1976-7), 262-99.

9 Archive. A full set of photographs will be supplied to the Aberdeenshire SMR in Aberdeen and to the HES archive. The catalogue and reference plan for photographs are appended here.

Photo number	Direction faced	Content
1-3	N	N Range and Slaughter House
4-6	NW	N Range S wall
7-8	N	N Range D2 cart door
9-10	N	N Range. Detail wall and rybat W of D2
11	N	N Range. F1 vent external
12-13	N	N Range D3
14	N	N Range F2
15-16	N	N Range D4
17-18	N	N Range F3 external
19		N Range F3 internal
20-21	E	N Range. W gable
22		N Range NW skeuputt
23-24	S	N Range. N wall
25	S	N Range . E finial
26	S	N Range. Vent F4 external
27-28	S	N Range D6
29		N Range Vent F4 internal
30		N Range D6 internal
31		N Range D4, F2, F6 internal
32		N Range D3, F7 internal
33	E	N Range internal
34-35		N Range SE skeuputt
36	W	N Range E gable
37-38	N	Slaughter House S wall
39-40	N	Slaughter House. Detail S door and date stone
41	N	Slaughter House. Detail of door margins
42	N	Slaughter House. Detail of vent
43		Slaughter House. W finial
44	S	Slaughter House N wall
45	E	Slaughter House W gable
46-47	SSW	General view of steading from near Slaughter House
48-49	E	Cart shed ruin. N end
50-51	SE	Cart shed ruin
52-53	SE	Cart shed ruin. S end
54	S	S cottage N wall
55	S	S cottage W7
56-57	W	S cottage E gable
58-59	NNW	S cottage. S wall
60-61	N	S cottage W1
62-63	N	S cottage D9
64-65	E	S cottage W gable
66	E	S cottage W gable date stone
67-68		S cottage carvings by S wall
69	W	S cottage inside W room
70	W	S cottage inside W room, fireplace F8
71	E	S cottage. Inside W room
72	E	S cottage. Mid room

73	E	S cottage. Mid room. F9
74	E	S cottage E room, fireplace
75-76	E	E range. W wall
77-78	E	E range. D11, W11
79-80	E	E range. W12
81	S	E range. N gable
82	W	E Range. E wall
83	W	E range. Detail of E wall where harling stripped back
84-85	N	E range. S gable
86		E range. Detail stonework at SE corner
87	N	E range. Interior
88	NE	W range, S wing. Interior stable . Trevis scar
89	N	W range, S wing. Interior stable . Scars of horse stalls
90-91	W	W range. E wall
92-94	N	W range. S wall of S stable wing
95	N	W range. S gable of E wing
96	N	W range. D15, W17
97	N	W range, D15 and paving into carriage house
98-99	NW	W range, S wing interior. Harness pegs
100-101	E	W range, S wing. W gable
102-103	S	W range, S wing. N wall
104-105	E	W side of W Range
106-107	N	NW cottage ruin
108-109	ESE	Cottage ruin from road
110	E	W range. D 18
111		N Range. Finial E end
112		E cartshed ruin. Finial
113		E range. Finial N end
114		N range, skeuputt SE corner
115		Slaughter House. Finial
116		E range. Skeuputt NE corner
117-118		E range. Finial S end
119		S cottage. Chimney E end
120-121		S cottage. W end apex
122-123		S cottage. Date stone SW corner
124-125		W range. Date stone SE corner
126		W range, S wing. Chimney W end
127		W range. NW corner skeuputt
128		W range, E wing. S finial



Illus 65 Photo location