

CAULDHAME MILL
KEIG
ABERDEENSHIRE



Standing Building Survey
Carried out 7th September 2017
by
Murray Archaeological Services Ltd



Report No: MAS 2017-21
by
H K Murray and J C Murray

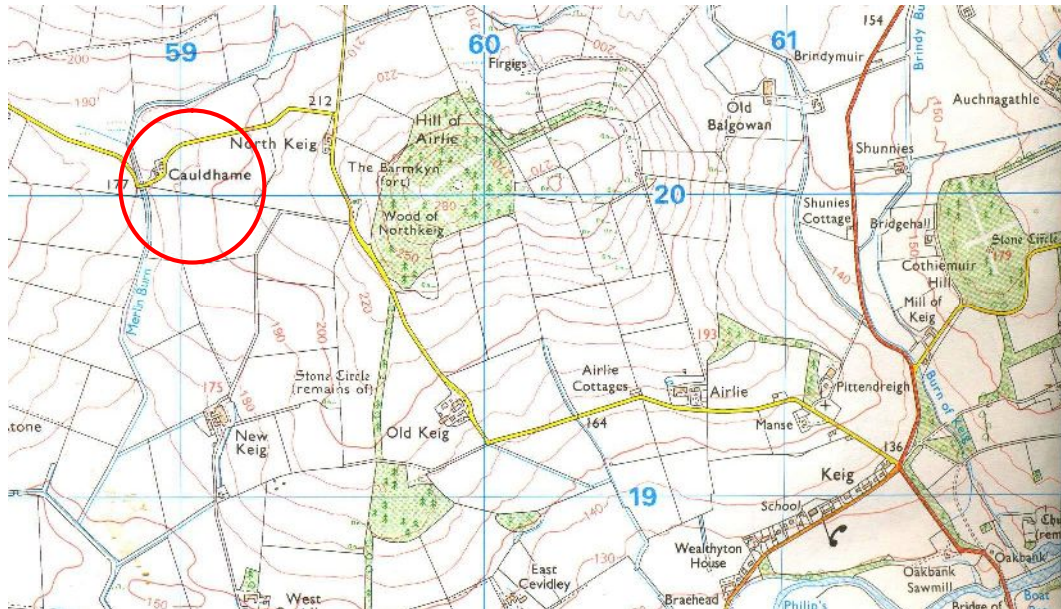
H K Murray BA, PhD, MCI(A), FSA Scot
J C Murray BA, MCI(A), FSA Scot, FMA
Hill of Belnagoak, Methlick, Ellon, Aberdeenshire AB41 7JN
Telephone: (01651) 806394 e-mail: cmurray@btinternet.com

CAULDHAME MILL
KEIG
ABERDEENSHIRE

- Standing Building Survey -

1. Background
 - 1.1 A standing building survey was required for a mill building at Cauldhame, Keig, Aberdeenshire, prior to its conversion to form a dwelling house.
 - 1.2 The archaeological condition was applied in the context of planning legislation (PAN 2/2011, SPP, SHEP), which states that it is necessary for developers to arrange for archaeological work to take place prior to development, in appropriate circumstances. Planning Application Number: APP/2017/1600.
 - 1.3 A Level 1 Standing Building Survey was required which includes measured plans and elevations, a written account of the building's plan, form, function, age and development sequence in addition to a photographic survey of the interior and exterior of the building.
 - 1.4 Murray Archaeological Services Ltd was commissioned to undertake the work by Colin Thompson Architect on behalf of his client Mr Alan Masson. The site element of the survey was completed on the 7th September 2017.
2. Desk-top survey
 - 2.1 A search was carried out in the Sites and Monuments Record, Archaeology Service, Aberdeenshire Council and in the Sites and Monuments Records of the Royal Commission for Ancient and Historic Monuments in Scotland (RCAHMS, now HES) through Canmore and Pastmap.
 - 2.2 The 1st and 2nd edition Ordnance Survey maps were consulted.

2.3 Plans and elevations were supplied by Colin Thompson, Architect and annotated as necessary by MAS Ltd.



Illus 1 Detail of OS map. Ordnance Survey © Crown copyright (2004) All rights reserved. Licence number (100049810). Site indicated by red circle.

3. The Site

3.1 The site lies some 2.5km NW of Keig on a minor road. At the time of the survey the steading (not part of the survey) had been almost totally demolished and the house (not part of the survey) was a typical 1 ½ storey stone cottage with a slate roof. The mill roof had been removed and there had been considerable excavation (up to 2m) and some infilling around the mill so it was not possible to assess the original ground levels.

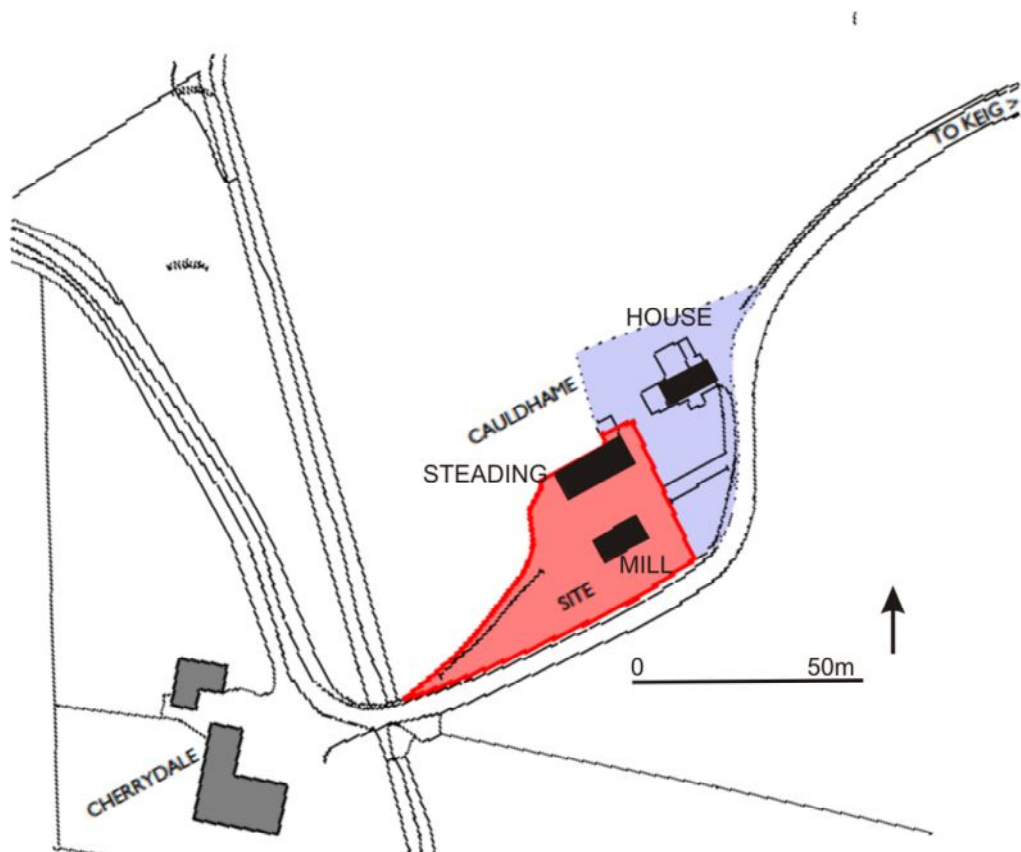
Parish: Keig NGR: NJ 5893 2007 (farm general)

GPS between mill and steading: 358928,820088

HES SMR: NJ52SE 116 Farmstead



Illus 2 General view looking NE with the mill in the foreground, the house behind and the remains of the steading wall on the LHS.



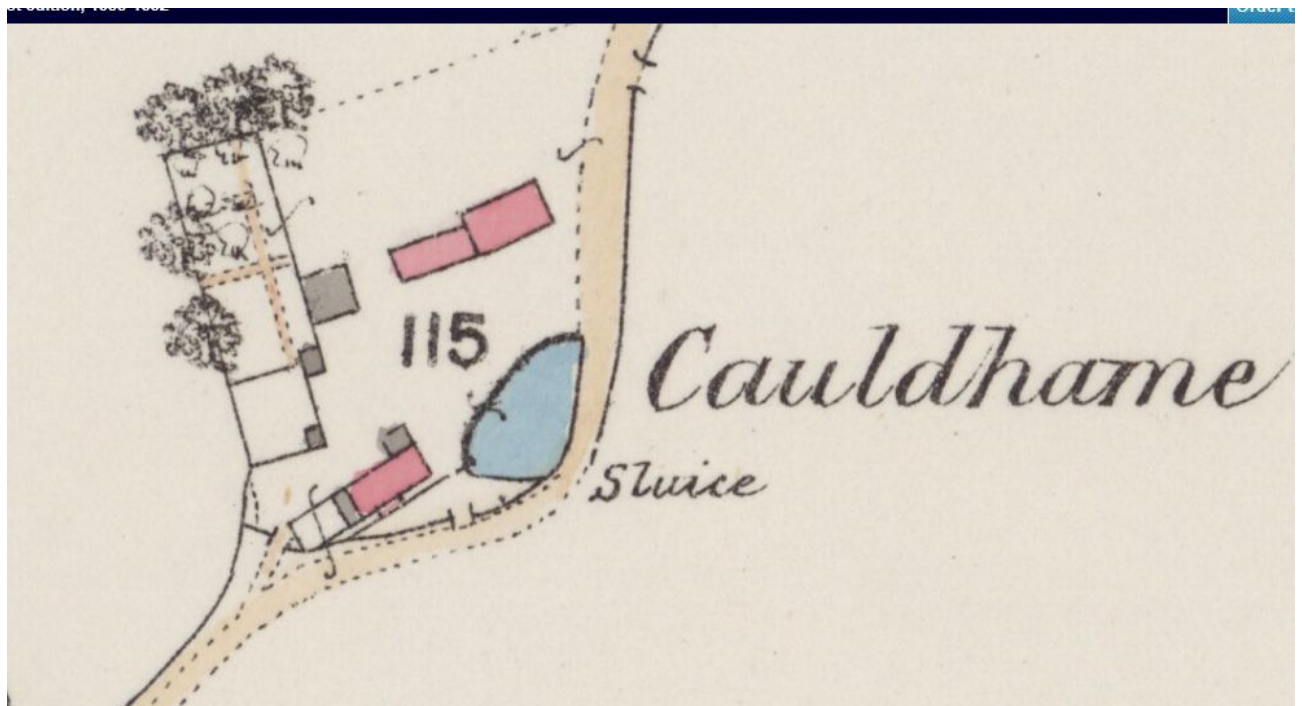
Illus 3 Site plan courtesy of Colin Thompson, architect.

4. Documentary evidence

The mill and farm was part of the Castle Forbes estate. Newspaper archives indicate the names of some of the tenants. An advertisement by the Estate for contractors to deepen the burn at Cauldhame indicates that it was built by that date. The deepening of the burn might be related to creating a good water flow for the mill.

1853 Advertisement for contractors to drain 11 acres and widen and deepen burn at Pitendreigh and Cauldhame, Keig. Applications to overseer at Castle Forbes. 28 December. 1853 *Aberdeen Press and Journal* www.britishnewspaperarchive.co.uk

1867 25" OS map Aberdeen sheet LII.12 (Keig) surveyed in 1867, published in 1869 shows the mill with the mill wheel near the centre of the SE wall, fed by a sluice from a mill pond to the NE and draining down into the Merlin burn. The main part of the mill is a rectangular stone building, with a timber extension at the SW gable with an unroofed building or enclosure continuing the line to the SW and a small almost square timber lean-to against the E end of the NW wall. Another building, presumably the house lies to the N, with a number of timber outbuildings.



Illus 4 Detail of 25" OS map Aberdeen sheet LII.12 (Keig) 1867, published 1869

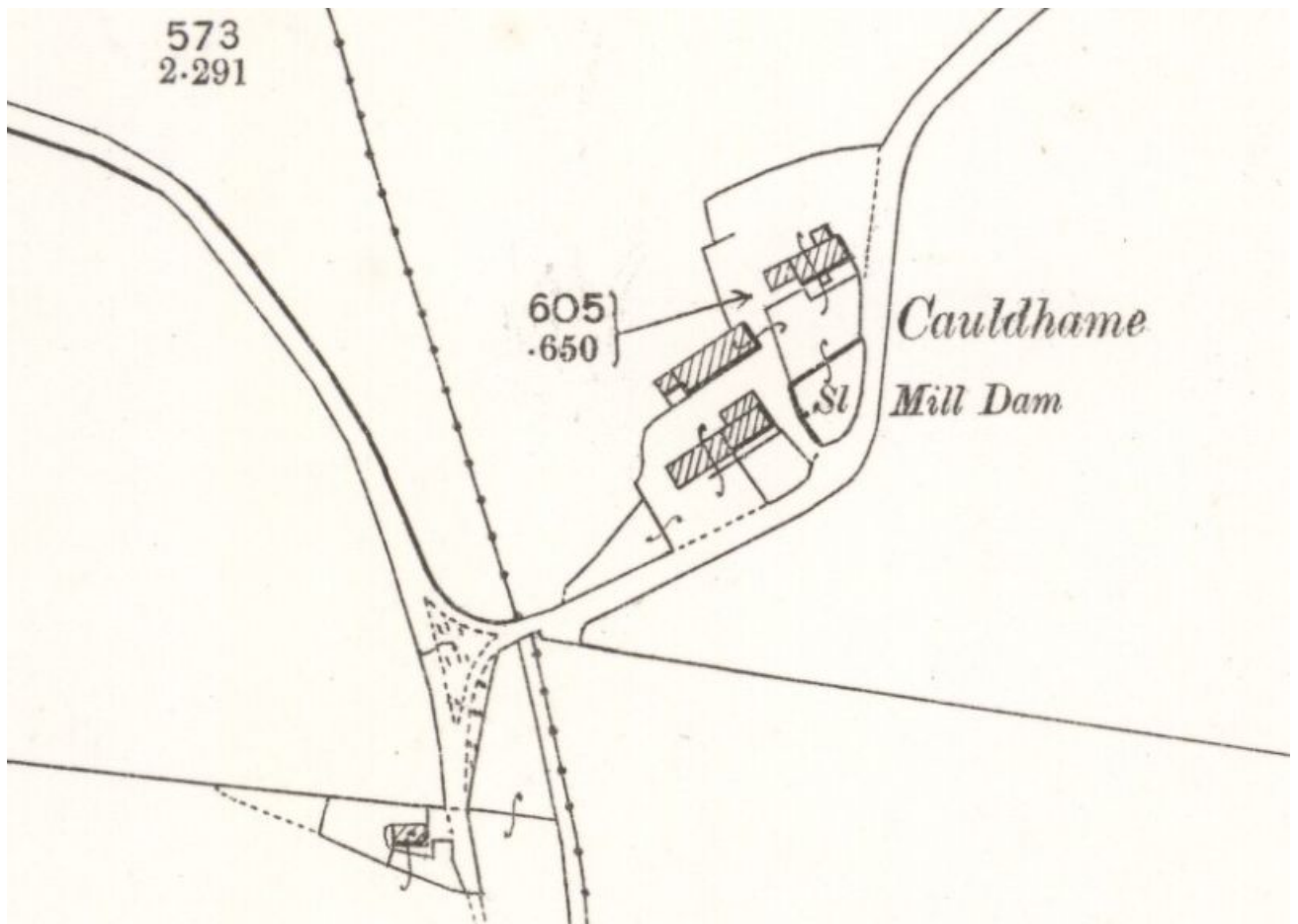
1865-1871 The OS Name Book (OS1/1/43/7 <https://scotlandspplaces.gov.uk/digital-volumes/ordnance-survey-name-books/aberdeenshire-os-name-books-1865-1871>)

describes Cauldhame as ‘ a small farmsteading with offices and garden attached; property of the Right Hon. [Honourable] Lord Forbes’. Alexander Murray is named as the tenant.

1868 Death on 4th November of Mary Brown, wife of Alexander Murray (of Cauldhame) and on 9th November the death of Alexander, his son.

12th November. Dundee Courier. www.britishnewspaperarchive.co.uk

1899 By the 25” OS map of 1899 (Aberdeen sheet 052.12 (includes Tullynessle and Forbes)) the mill appears to have been extended to the full footprint of the roofed and unroofed parts shown on the 1867 map. A narrower extension abutts the E end of the NW wall. The house is now shown on its present site as is the long rectangular steading.



Illus 5 Detail of 25” OS map Aberdeen sheet 052.12 (includes Tullynessle and Forbes) 1899, published 1900

1912 Advertisement for displenish sale on 18th May. 16th April 1912. *Buchan Observer*.
This suggests a change of tenant.

1914 R S Taylor, Caulhame, Keig contributed to subscription for motor ambulance. 21st October. *Aberdeen Press and Journal*. www.britishnewspaperarchive.co.uk Mr Taylor may have become the tenant after the former tenant had dispenish sale in 1912.

1938 Walker, Cauldhame, Keig –advertisement to sell a working mare. 25th August 1938. www.britishnewspaperarchive.co.uk . Mr Walker may have been the tenant at this time.

5 Methodology

5.1 The ground plan (illus 7) and elevations (illus 10, 13, 14, 19) have been annotated to show details which may help in understanding the development and history of the building.

5.2 The areas recorded were photographed. The full set of photographs will be supplied for the archive and annotated plans in the present report (illus 23, 24) indicates the position of each.

6 The Building

The documentary evidence shows that the mill was built by 1867, and probably by at least 1853.

Orientation NE/SW. For the purpose of this report approximate compass points have been used.

Dimensions 10.46 x 5.25m externally

Present/recent use derelict

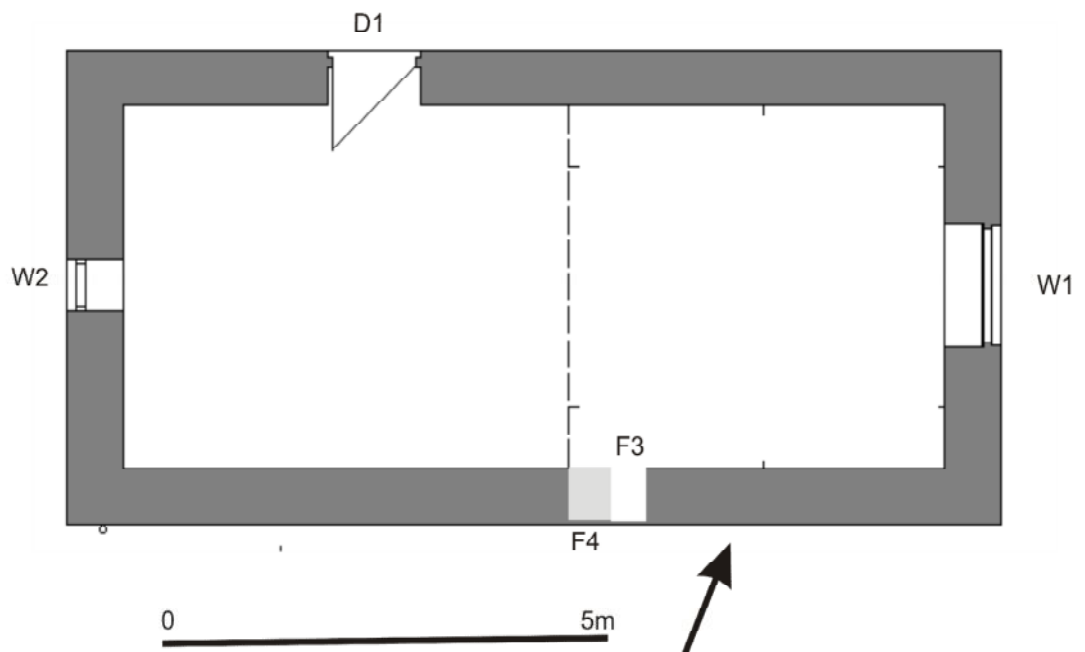
Original use . Water-powered mill

Walls Rubble stone with pale yellow granite at quoins. Cement render in places. There is some indication that the N wall had been raised slightly. On the inner face this could have been attributed to re-pointing within the attic level, but externally both the stonework and quoins of this upper part appear different (Illus 8).

Roof The roof had been removed prior to the survey but a photograph supplied by the architect, Colin Thompson, indicates it had been slate. (Illus 6)



Illus 6 View of mill prior to removal of roof. Photograph courtesy of Colin Thompson, architect



Illus 7 Plan Annotated from drawing courtesy of Colin Thompson, architect.

Doors and windows

N wall

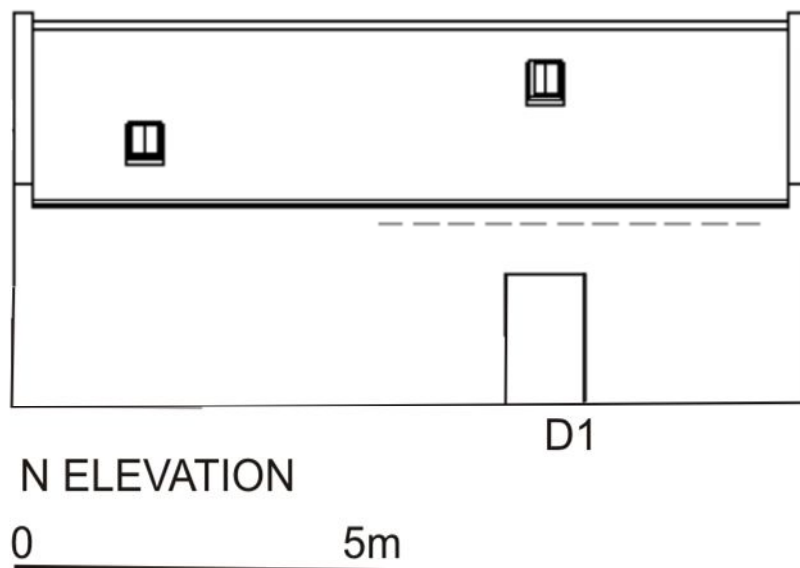


Illus 8 N wall, looking E. Arrows indicate two, possibly additional upper courses.

D1 W: 1.04m H:1.75m. Granite lintel and sill, rubble rybats.



Illus 9 Door D1



Illus 10 N elevation. Annotated from drawing courtesy of Colin Thompson, architect.

E wall

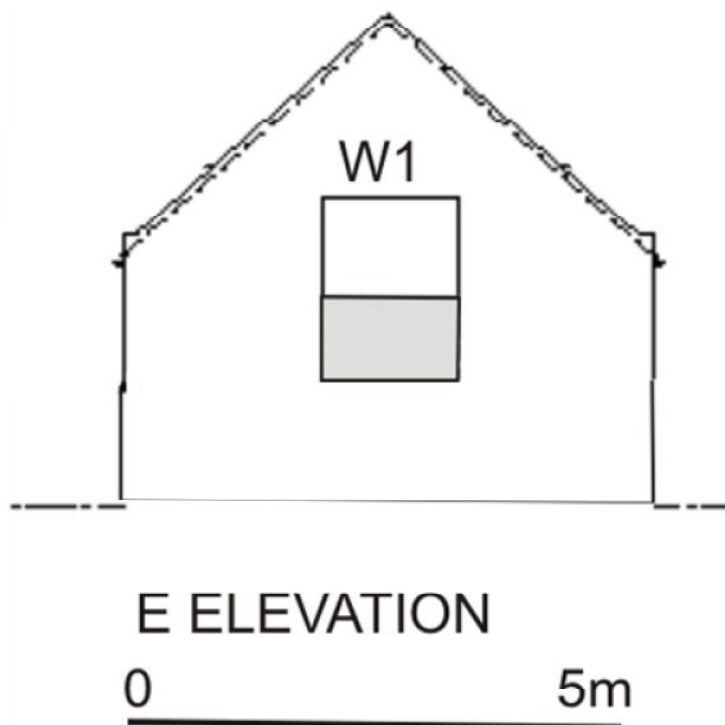
W1 W:1.40m H:1.83m total. Lower 0.65m blocked with concrete blocks. Granite lintel. Rubble rybats (to base of blocking). Earth has been cut away but appears to have been to base of blocking.



Illus 11 E wall and window W1

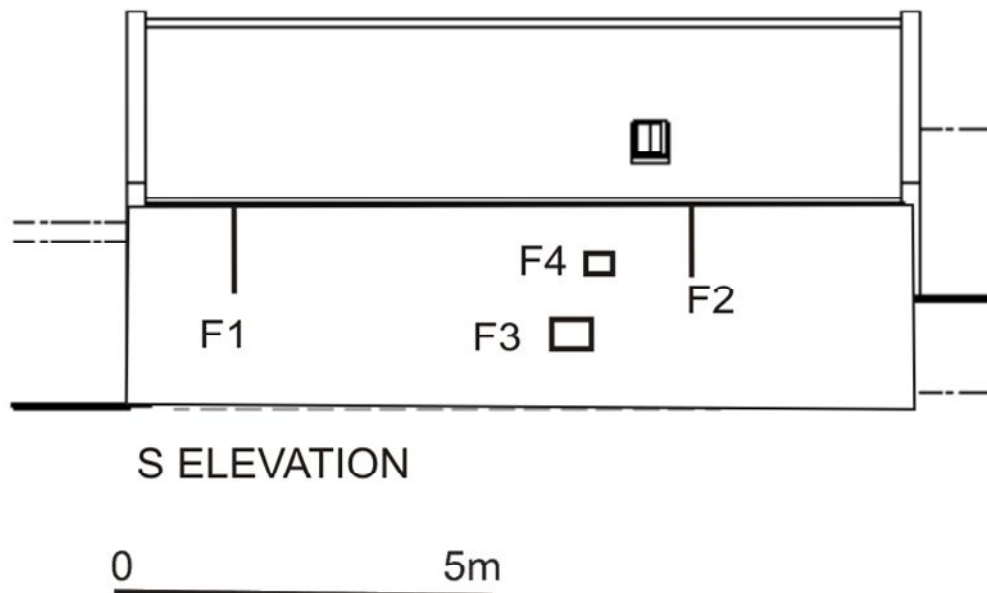


Illus 12 Window W1, looking through building to loft floor and window W2



Illus 13 E elevation. Annotated from drawing courtesy of Colin Thompson, architect.

S wall



Illus 14 S elevation. Annotated from drawing courtesy of Colin Thompson, architect.



Illus 15 S wall looking to W. Arrows indicate raggles F1 and F2

F1, F2 Vertical cement raggles indicating former position of lean-to structure, probably over wheel.

F3 W: 500mm H: 500mm. Base c 700mm above internal floor level. Rubble stone rybats, lintel and sill. Stone blocked. (Illus 17)

F4 W: 260mm H: 190mm. Wooden frame externally. Bolts and base for drive shaft remain. (Illus 16)



Illus 16 F4. Drive shaft setting

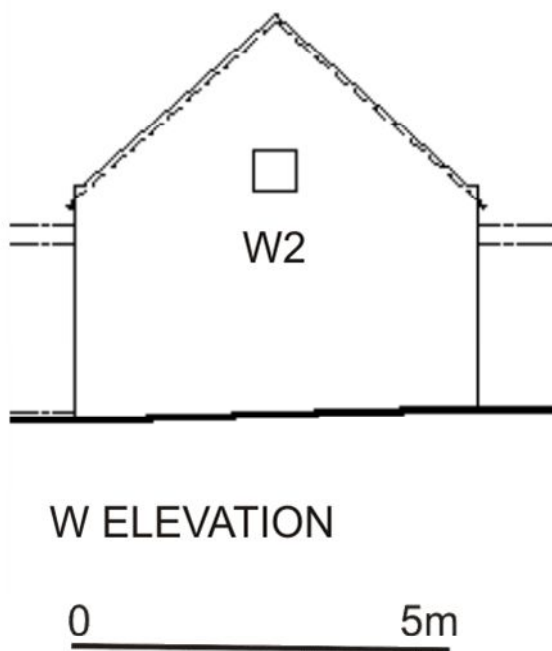


Illus 17 F3 wheel setting. Blocked.

W wall



Illus 18 W elevation



Illus 19 W elevation. Annotated from drawing courtesy of Colin Thompson, architect.

W2 W: 600mm H: 500mm (from elevation). Rubble rybats, lintel and sill.
Opened into loft.



Illus 20 Window W2

Interior

The interior of the building had been cleared in the past and no original features remained. A loft floor (burnt) remained over the W end of the building. It had presumably extended for the full length although the holes for the joist were not visible and had probably been obscured when the top of the N and S walls were rebuilt.



Illus 21 Interior looking E



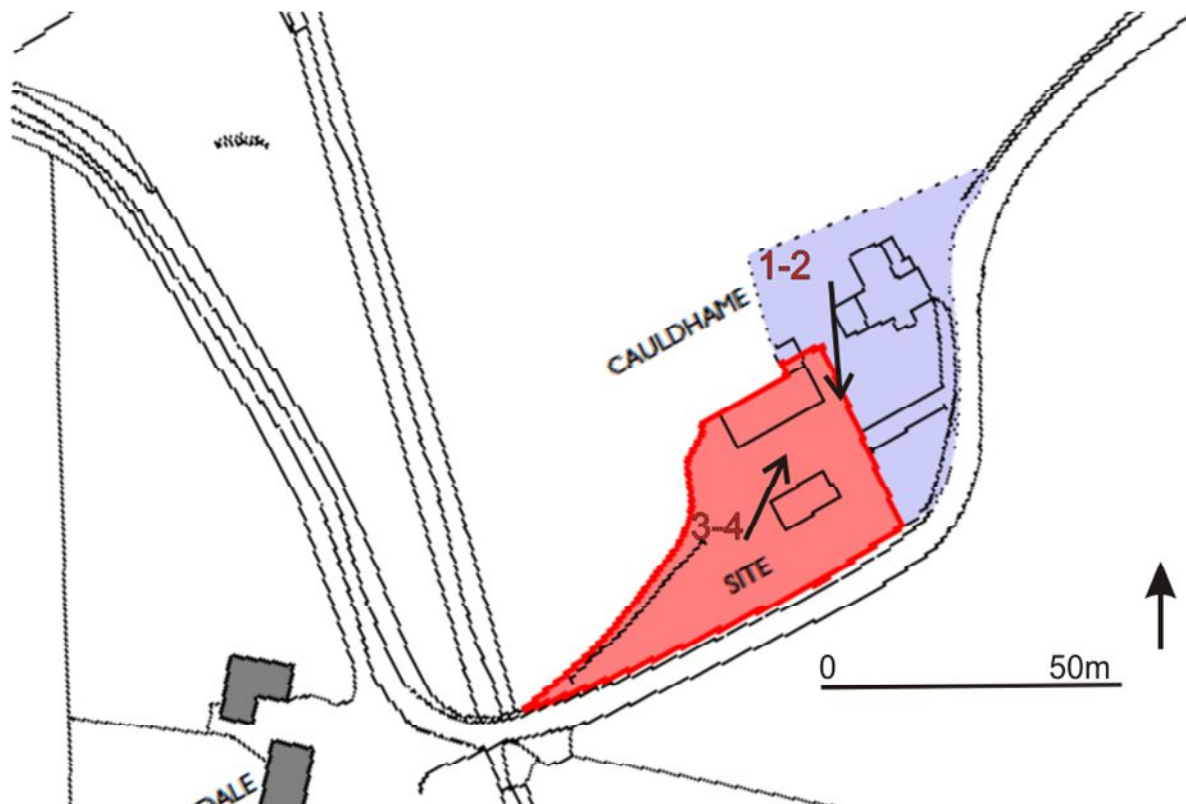
Illus 22 Interior looking W, with loft floor.

7 Discussion

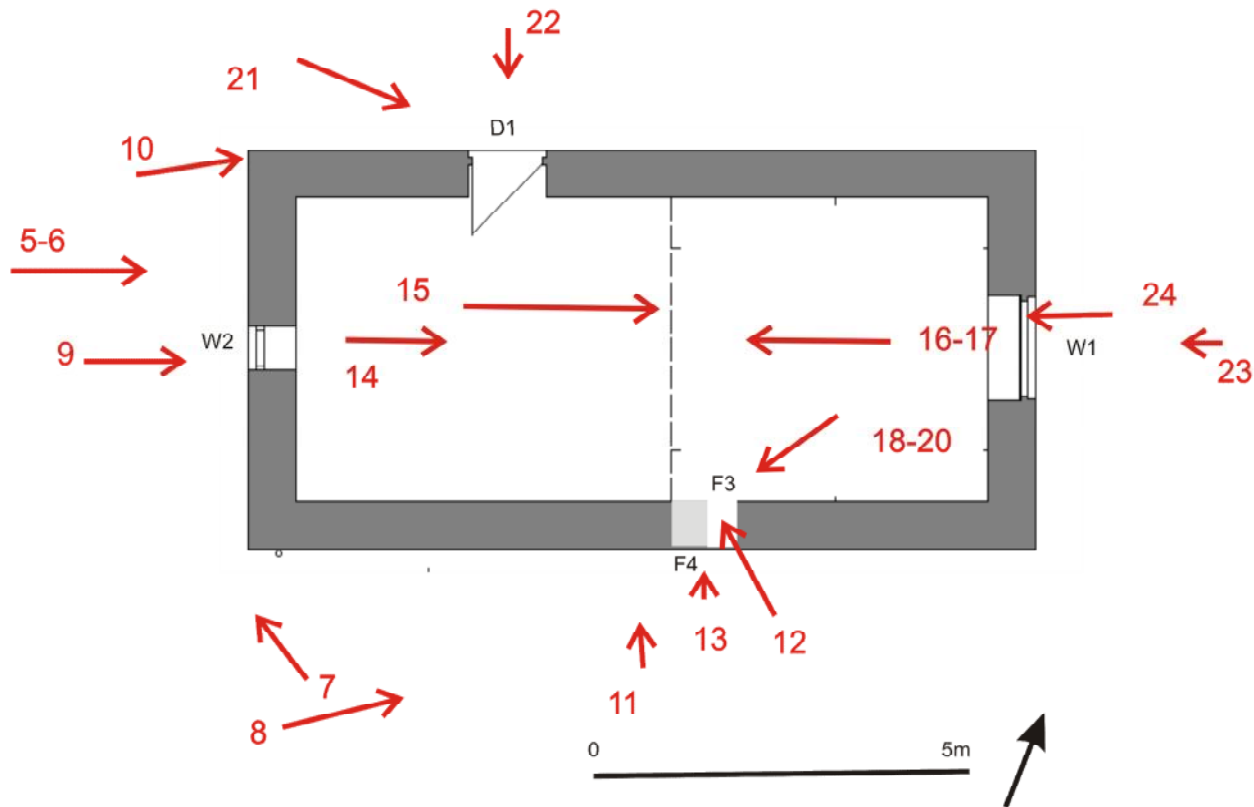
Few details of this mill survive but it is typical of the size of mill appropriate for the size of the house and steading.

8 Archive

A full set of photographs with the photo location plans (Illus 23,24) will be supplied to the Aberdeenshire SMR and to the HES archive.



Illus 23 Photo location- setting views. Annotated from plan courtesy of Colin Thompso



Illus 24 Photo location.. Annotated from plan courtesy of Colin Thompson

Photo number	Content
1-2	Mill looking SW from by house
3-4	Looking NE from beside mill to house and steading
5-6	Mill. W gable
7	Mill SW corner
8	S wall, looking E
9	W wall W2
10	NW skewputt
11	S wall F1-F4
12	S wall F3
13	S wall F4
14-15	Interior looking E
16-17	Interior looking W
18-20	Interior, F3 and F4
21	N wall
22	N wall D1
23	E wall
24	E wall, W1