

**PITNAMOON STEADING**  
**LAURENCEKIRK**  
**ABERDEENSHIRE**

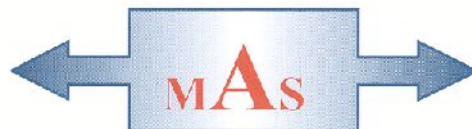


**Standing Building Survey**

Carried out 9<sup>th</sup> October 2017

by

**Murray Archaeological Services Ltd**



**Report No: MAS 2017-24**

by

**H K Murray and J C Murray**

H K Murray BA, PhD, MCI(A), FSA Scot

J C Murray BA, MCI(A), FSA Scot, FMA

Hill of Belnagoak, Methlick, Ellon, Aberdeenshire AB41 7JN

Telephone: (01651) 806394 e-mail: cmurray@btinternet.com

---

**PITNAMOON**  
**LAURENCEKIRK**  
**ABERDEENSHIRE**

**- Standing Building Survey -**

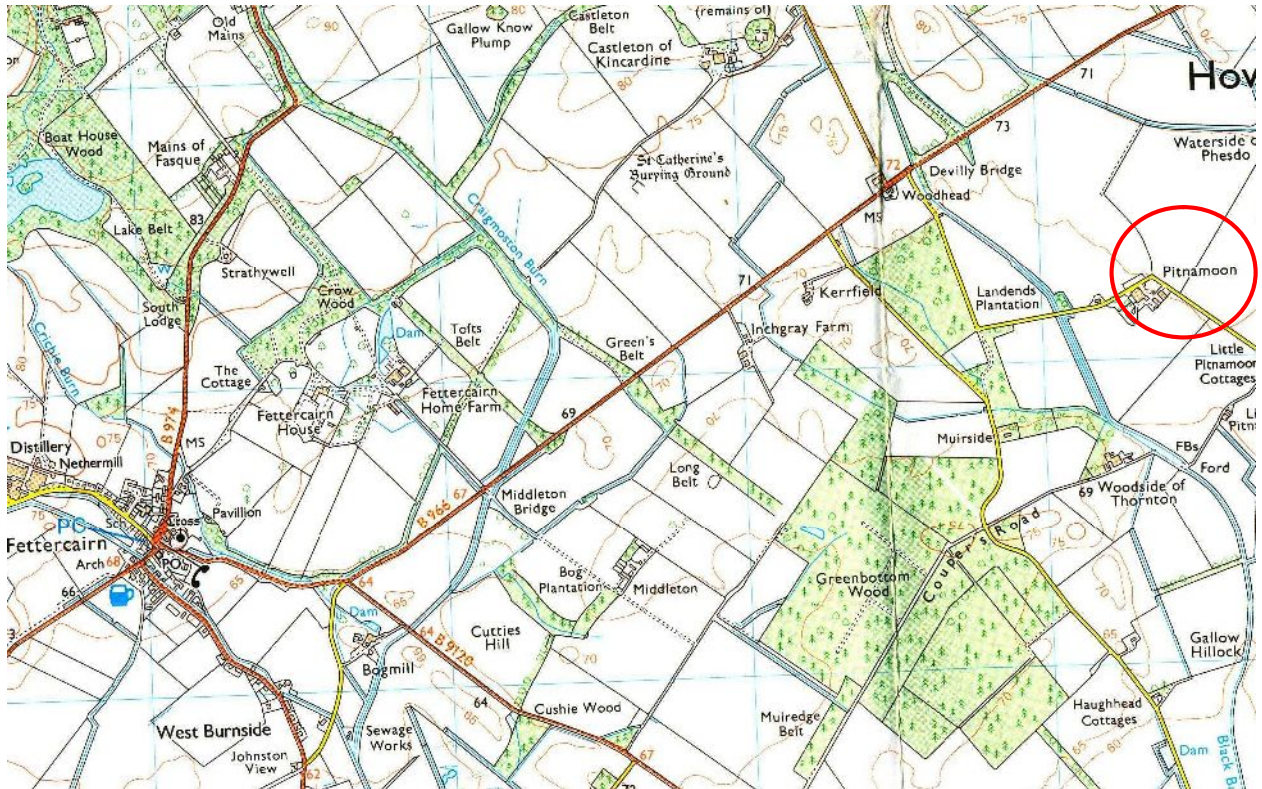
1. Background

- 1.1 A standing building survey was required for a farm steading at Pitnamoon, Laurencekirk, Aberdeenshire, prior to conversion to six dwelling houses.
- 1.2 The archaeological condition (Condition 1) was applied in the context of planning legislation (PAN 2/2011, SPP, SHEP), which states that it is necessary for developers to arrange for archaeological work to take place prior to development, in appropriate circumstances. Planning Application Numbers: APP/2013/3558.
- 1.3 A Level 2 Standing Building Survey was required, which requires, ‘ a fully analytical record, which will include detailed photographs of decorative and structural elements, a detailed written description and account of the building’s origins, development, use and the evidence on which this has been based. Readily available historic documentation will be examined and measured drawings will be made of relevant sections, elevations and key architectural features’.
- 1.4 Murray Archaeological Services Ltd was commissioned to undertake the work by Stuart Naysmith of Lippe Architects and Planners for their client. The site element of the survey was completed on the 9<sup>th</sup> October 2017.

2. Desk-top survey

- 2.1 A search was carried out in the Sites and Monuments Record, Archaeology Service, Aberdeenshire Council and in the Sites and Monuments Records of the Royal Commission for Ancient and Historic Monuments in Scotland (RCAHMS, now HES) through Canmore and Pastmap.
- 2.2 The 1<sup>st</sup> and 2<sup>nd</sup> edition Ordnance Survey maps were consulted.

- 2.3 Plans and elevations have been drawn by Lippe Architects and Planners and annotated as necessary by MAS Ltd.



**Illus 1 Detail of OS map. Ordnance Survey © Crown copyright (2007) All rights reserved. Licence number (100049810). Site indicated by red circle.**

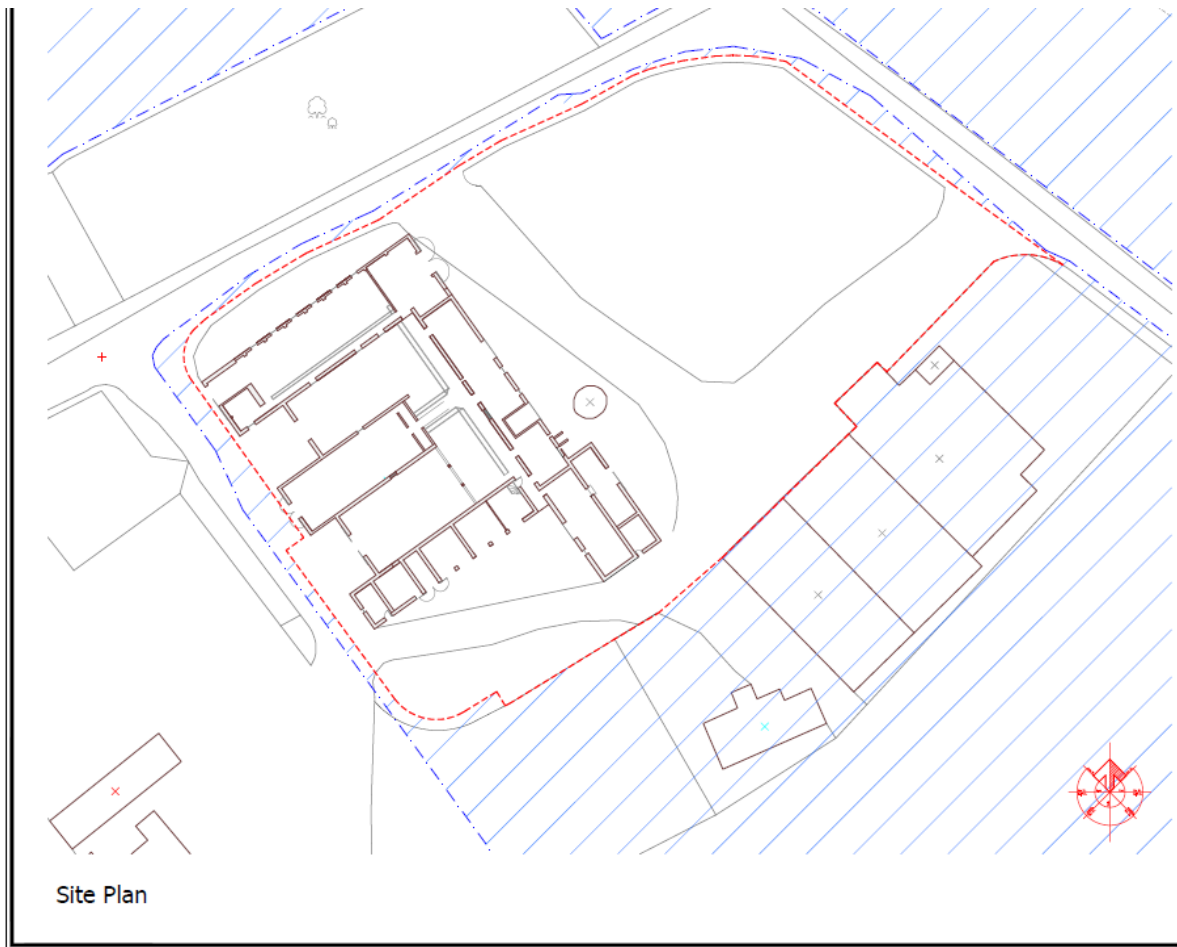
### 3. The Site

- 3.1 The steading lies some 4km NW of Laurencekirk and 3km ENE of Fettercairn, beside a minor road to the S of the B966. It is in the middle of fertile farmland.

Parish: Fordoun

NGR: NO 6836 7422

GPS 368360, 774220 (N side of steading)



Illus 2 Site plan courtesy of Lippe Architects and Planners

#### 4. Documentary evidence

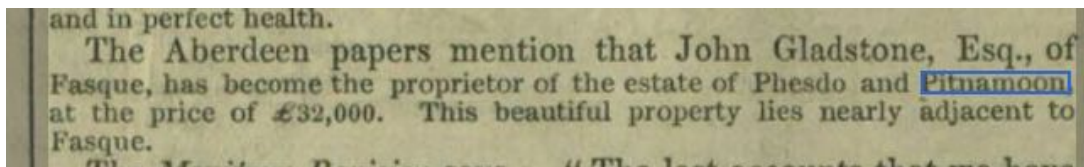
**1747-55** Roys Military map of 1747-55 shows cultivated land in this area with Little Pitnamoon named and Meikle Pitnavon (sic) shown slightly NW in the location of the present Pitnamoon.



Illus 3 Detail from Roy's Military map of 1747-55. [www.nls.ac.uk](http://www.nls.ac.uk)

- 1799** Advertisement regarding the sale of lands in Kincardineshire including Pitnamoon and Mill of Thornton, both considered the best farms on the property and described as mostly arable. The leases expired Martinmas 1802. (*Caledonian Mercury* 28 December 1799. [www.britishnewspaperarchive.co.uk](http://www.britishnewspaperarchive.co.uk) ).
- 1829** Fasque Estate bought by John Gladstone from Alexander Ramsay of Balmain (HES LB9503 : Fasque House reference)
- 1844** Estate of Phesdo and Pitnamoon for sale. ‘The Farm houses and Steadings on the estate, mostly built by the proprietor, are of a very superior description, and in good repair’. (*The Scotsman* 8<sup>th</sup> May. 1844 ) [www.britishnewspaperarchive.co.uk](http://www.britishnewspaperarchive.co.uk) ). Phesdo estate, some 1000acres, had belonged to Alexander Crombie (Robertson, 1812, 146) who would appear to have undertaken the initial Improvements.

**1845**

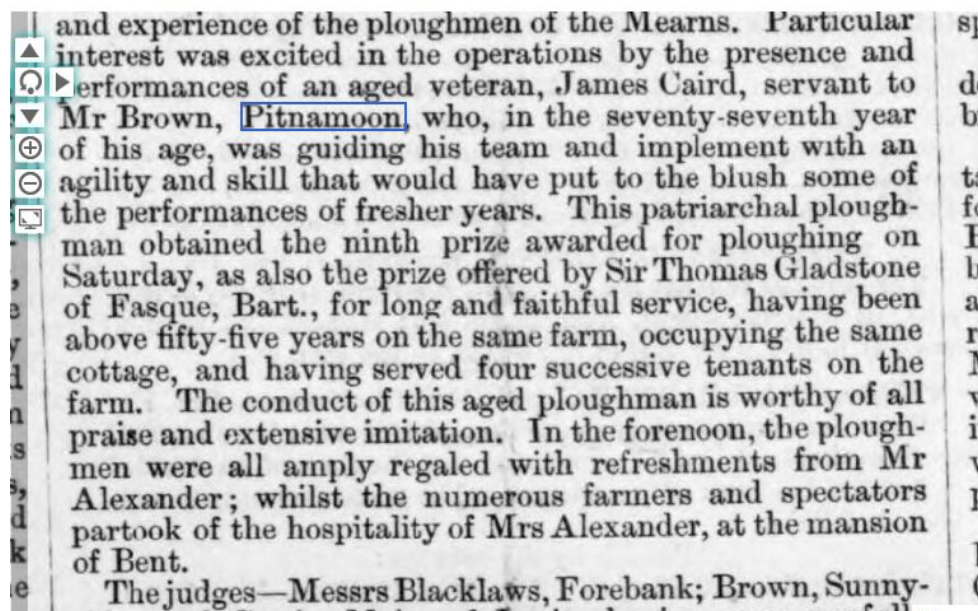


**Illus 4 Illustrated London News 8<sup>th</sup> February 1845** [www.britishnewspaperarchive.co.uk](http://www.britishnewspaperarchive.co.uk)

*The Illustrated London News* 8<sup>th</sup> February 1845 notes that John Gladstone of Fasque had bought the estate of Phesdo and Pitnamoon, nearly adjacent to Fasque. The sale is also reported in the *The Scotsman* 22<sup>nd</sup> January 1845 [www.britishnewspaperarchive.co.uk](http://www.britishnewspaperarchive.co.uk).

- 1851** Thomas Gladstone inherited Fasque estate and the Phesdo lands on the death of his father.
- C1852** William Brown takes over tenancy from his brother George Brown. A reference in William’s obituary in 1912 notes that c 60 years earlier (? 1852) he had taken over the tenancy of Pitnamoon from his brother, George Brown (*Stonehaven Journal* 18<sup>th</sup> January 1912).
- 1857** A report of a ploughing competition refers to the tenant of Pitnamoon as William Brown. The elderly winner, who was a farm servant to William Brown, had worked and lived at Pitnamoon for 55 years through 4 tenancies.

© THE BRITISH LIBRARY BOARD. ALL RIGHTS RESERVED.



Illus 5 Montrose, Arbroath and Brechin review;and Forfar and Kincardineshire Advertiser. 18<sup>th</sup> December 1857

1858 Advertisement for the 19 year tenancy of the farm of Pitnamoon on the Fasque Estate with entry Whitsunday 1859 (*Aberdeen Herald and General Advertiser* 13<sup>th</sup> February 1858 [www.britishnewspaperarchive.co.uk](http://www.britishnewspaperarchive.co.uk)). This second term would run to 1878.

**KINCARDINESHIRE.**

**Desirable Farm on the Estate of Phesdo.**

*To be Let, for Nineteen Years, with Entry to the Houses, Pasture, and Turnip Land, at Whitsunday, 1859, and to the remainder of the Land at the separation of that year's Crop from the Ground,*

**T**HE Farm of **PITNAMOON**, in the Parish of FORDOUN, about two miles from the Laurencekirk Station of the Scottish North-Eastern Railway.

The Farm is all Arable, and extends to 220 Scotch Acres or thereby. The Lands are in a high state of cultivation, and capable of growing all kinds of Crops.

Should Offerers incline, several small Crofts adjoining may be added to the Farm.

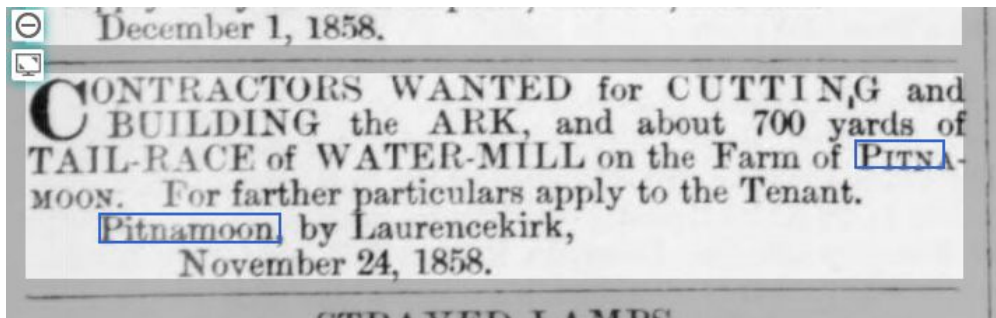
For further particulars, apply to JAMES MURRAY, Mains of Fasque, Fettercairn, or G. C. MYERS, Town-Clerk. Montrose, by whom Offers will be received up to the 26th day of February next.

Mains of Fasque, 10th January, 1858.

Where am

Illus 6 *Aberdeen Herald and General Advertiser* 13<sup>th</sup> February 1858  
[www.britishnewspaperarchive.co.uk](http://www.britishnewspaperarchive.co.uk)

- 1858** Advertisement for contractors for works to water mill at Pitnamoon. *Montrose, Arbroath and Brechin review; and Forfar and Kincardineshire Advertiser* 3<sup>rd</sup> December 1858.

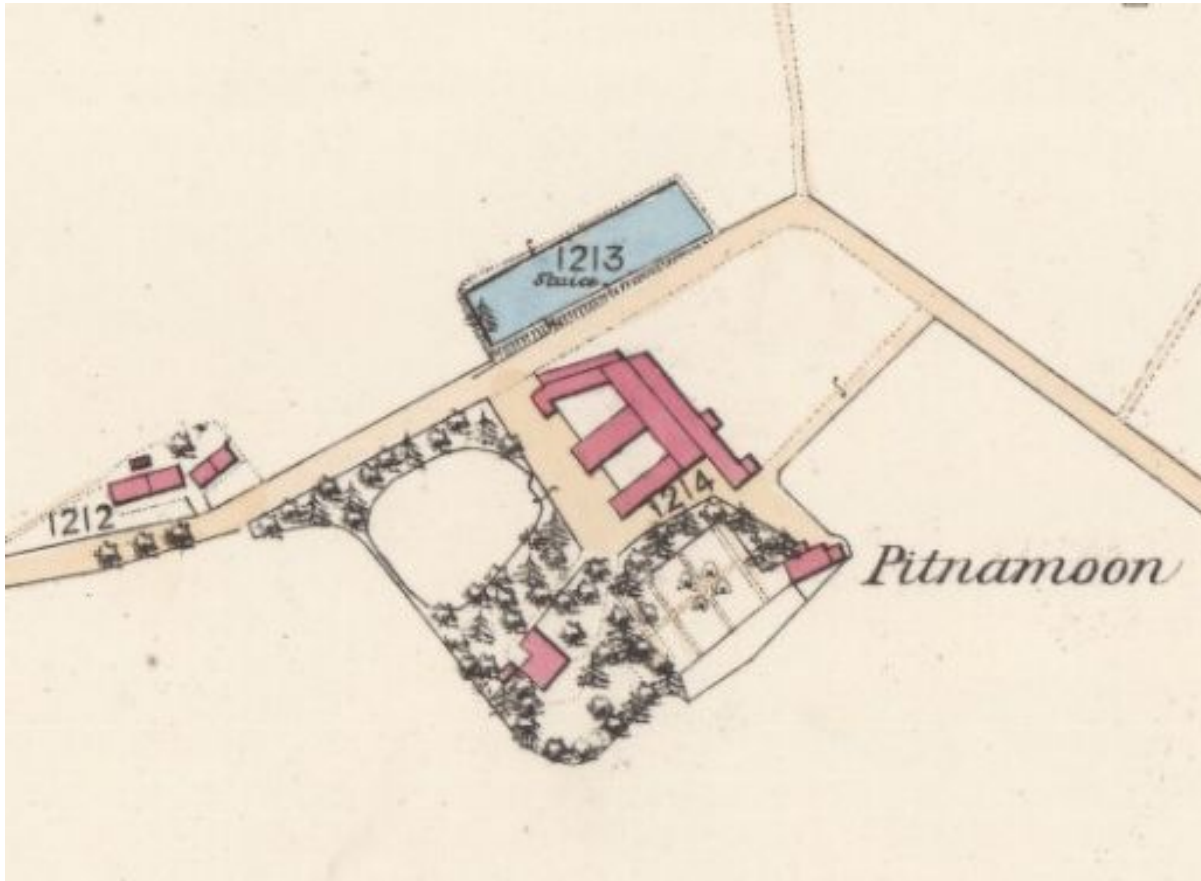


**Illus 7** *Montrose, Arbroath and Brechin review; and Forfar and Kincardineshire Advertiser* 3<sup>rd</sup> December 1858

The ark is the pit for mill wheel ("Ark *n.*<sup>2</sup>". *Dictionary of the Scots Language*. 2004. Scottish Language Dictionaries Ltd. Accessed 12 Oct 2017 <[http://www.dsl.ac.uk/entry/snd/ark\\_n2](http://www.dsl.ac.uk/entry/snd/ark_n2)>), the tail race is the channel for water going away from the wheel.

- 1863** The 25" OS map Kincardine sheet XIX.16, surveyed in 1863, published 1868 shows a double U-plan steading with three ranges orientated approximately NE/SW and open to the SW. Two parallel and adjoining buildings form the NW range which extends slightly beyond the S end of the rest of the steading. The NW range is oddly angled and also appears to have comprised two parallel and adjoining structures. The farmhouse is shown to the SW and a cottage to the SE, with a garden between the two divided by a grid of paths. Open ground E of the steading may have been the rick yard. The millpond is shown N of the road with the sluice marked in line with the E side of the E range, presumably the mill- this is possibly shown by two small outshots against the E wall..

- 1863** The Ordnance Survey Name Book describes Pitnamoon as 'A good substantial Farm Steading with Offices &c all in good repair . Proprietor Sir Thomas Gladstone Bart [Baronet]'. The tenant is named as William Brown. <https://scotlandspplaces.gov.uk/digital-volumes/ordnance-survey-name-books/kincardineshire-os-name-books-1863/kincardineshire-volume-09/204>



Illus 8 Detail of 25" OS map Kincardine sheet XIX.16, published 1868 [www.nls.ac.uk](http://www.nls.ac.uk)

**1872** William Brown of Pitnamoon showing cattle at Fettercairn Show, with prizes for Angus cows, a Shorthorn bull and cross-bred cattle. *Dundee Courier* 6<sup>th</sup> August 1872 [www.britishnewspaperarchive.co.uk](http://www.britishnewspaperarchive.co.uk).

**1877** *Aberdeen Press and Journal* 26<sup>th</sup> September 1877. William Brown of Pitnamoon was buying Leicester tups at the 7<sup>th</sup> Annual show and sale of the Aberdeen Leicester Club. Leicester sheep, a breed developed in the 18<sup>th</sup> century, was used to improve size and fleece in cross bred lambs.

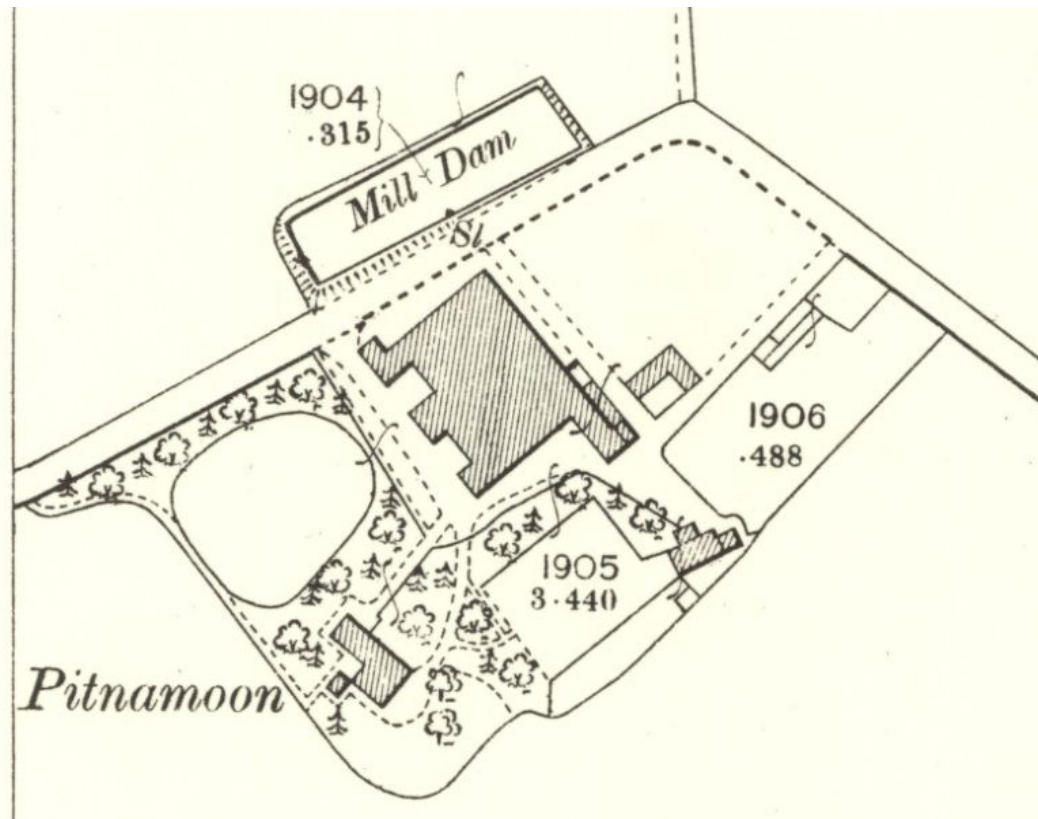
**1887** *Aberdeen Evening Express* 10<sup>th</sup> May 1877 reported a fire in barley stack in the stackyard at Pitnamoon. [www.britishnewspaperarchive.co.uk](http://www.britishnewspaperarchive.co.uk).

**1887, 1888, 1890** William Brown was winning prizes at Fettercairn Show for draught horses, cattle and Leicester sheep *Aberdeen Press and Journal* 2<sup>nd</sup> August 1887 and 11<sup>th</sup> August 1888. *Montrose, Arbroath and Brechin review; and Forfar and Kincardineshire Advertiser* 8<sup>th</sup> August 1890.

**1900** The 25"/mile OS map of 1900 (Kincardineshire 024.09 published 1904) shows the steading on the same footprint, but the angled NW corner has been squared off and the



open courts have been roofed. The outshots by the E wall have been joined up. A small L-plan building has been added to the E. The farmhouse appears to have been extended.

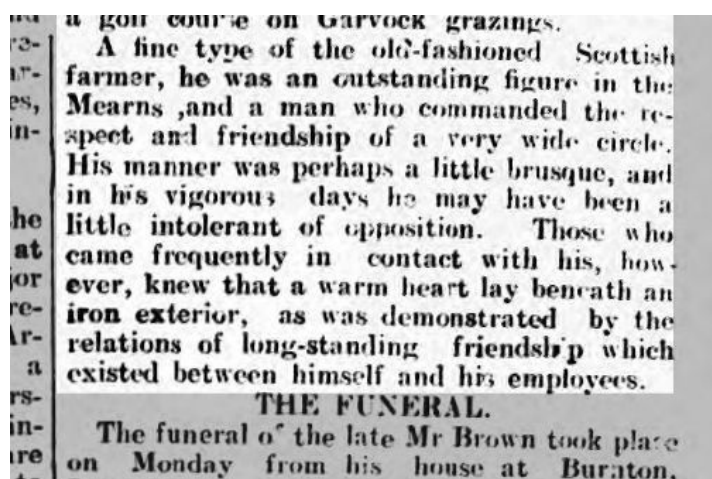
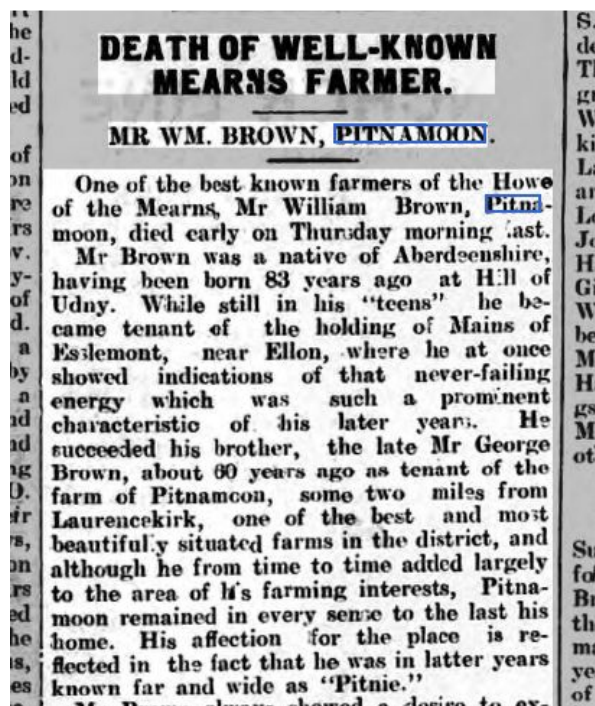


Illus 9 OS map of 1901 (Kincardineshire 024.09 published 1904) [www.nls.ac.uk](http://www.nls.ac.uk)

1911 *Dundee Courier* 3<sup>rd</sup> August 1911. William Brown showing Angus bulls

1912 Death of William Brown *Stonehaven Journal* 18<sup>th</sup> January 1912

[www.britishnewspaperarchive.co.uk](http://www.britishnewspaperarchive.co.uk).



Illus 10 Two extracts from *Stonehaven Journal* 18<sup>th</sup> January 1912  
[www.britishnewspaperarchive.co.uk](http://www.britishnewspaperarchive.co.uk).

1912 Tenancy to let from 1913. Described as dwelling house and steading in very good order with water-powered threshing mill. At this time the arable ground extended to 312 acres. *The Scotsman* 10<sup>th</sup> April 1912.

**KINCARDINESHIRE.**

**KINCARDINESHIRE—FASQUE ESTATES.**

The FARM of PITNAMOON, at present occupied by the representatives of the late William Brown, is TO LET, with entry at Martinmas next.

Pitnamoon is a very Desirable Farm, containing about 512 Acres Arable Land, O.S. measurement, and is about 2 miles from Laurencekirk Station.

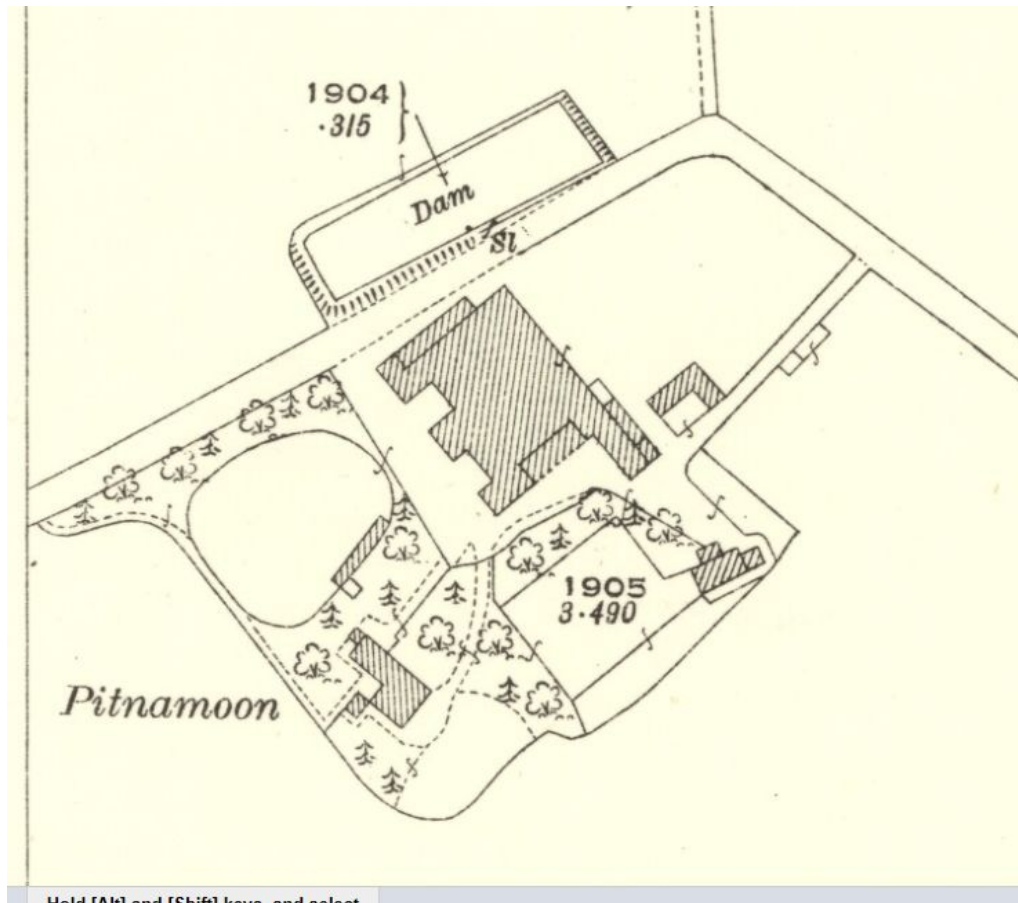
The Dwelling-House and Steading are in very good order, with Water-Power Threshing Mill.

ALSO,

The FARM of MIDMAINS OF BALFOUR, which has been in the hands of the Proprietor for the last four years, is to Let, with entry at Martinmas next. The Farm contains about 150 Acres Arable Land, O.S. measurement.

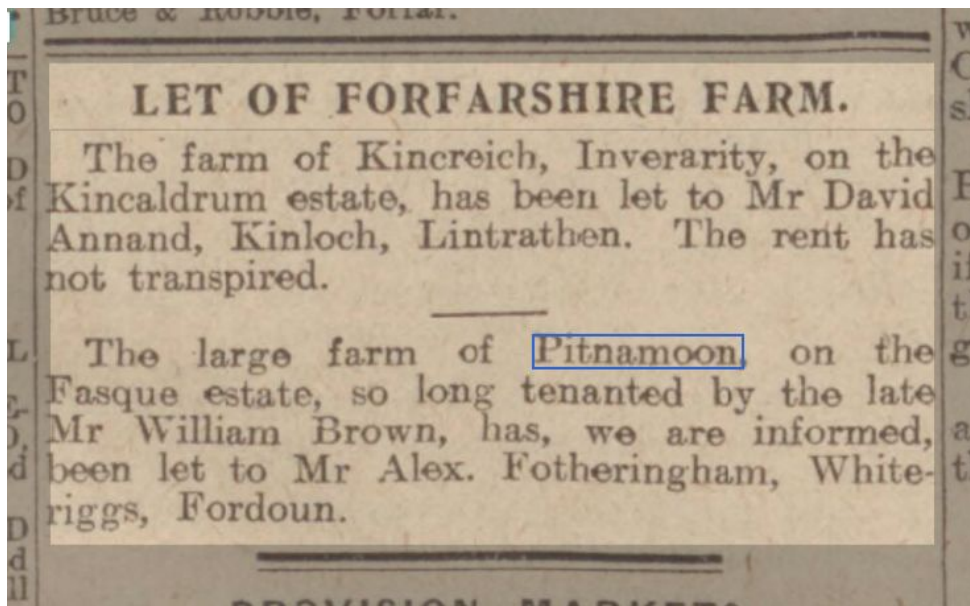
Illus 11 *The Scotsman* 10<sup>th</sup> April 1912 [www.britishnewspaperarchive.co.uk](http://www.britishnewspaperarchive.co.uk).

1922 The OS map of 1922 (Kincardineshire 024.09 published 1925) shows little change with the exception of a narrow additional structure abutting the NW wall beside the road.



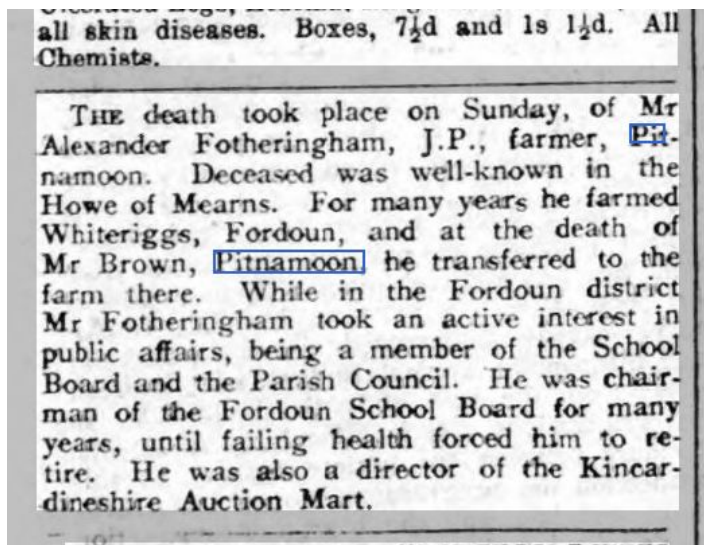
Illus 12 Detail of 25" OS map of 1922 (Kincardineshire 024.09 published 1925) [www.nls.ac.uk](http://www.nls.ac.uk)

1912 Alexander Fotheringham became the new tenant of Pitnamoon.



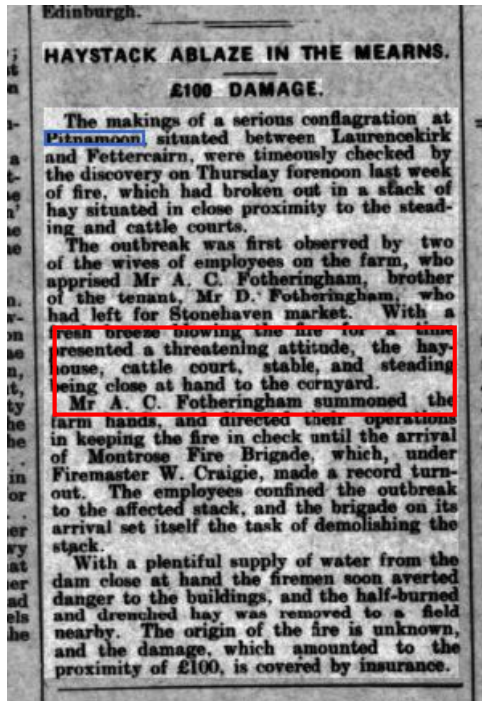
Illus 13 Dundee Courier 7<sup>th</sup> May 1912

1914 Alexander Fotheringham died but incidental newspaper references indicate that the family continued to farm at Pitnamoon until at least 1975 (Aberdeen Press and Journal 8 October 1975.)



Illus 14 Arbroath Herald and Advertiser 4<sup>th</sup> December 1914

1925 An account of a hay fire at Pitnamoon refers to cattle courts, hay house, stable and steading being near to the cornyard. These would be the buildings shown on the 1922 OS map.



Illus 15 Montrose, Arbroath and Brechin review; and Forfar and Kincardineshire Advertiser. 10<sup>th</sup> April 1925

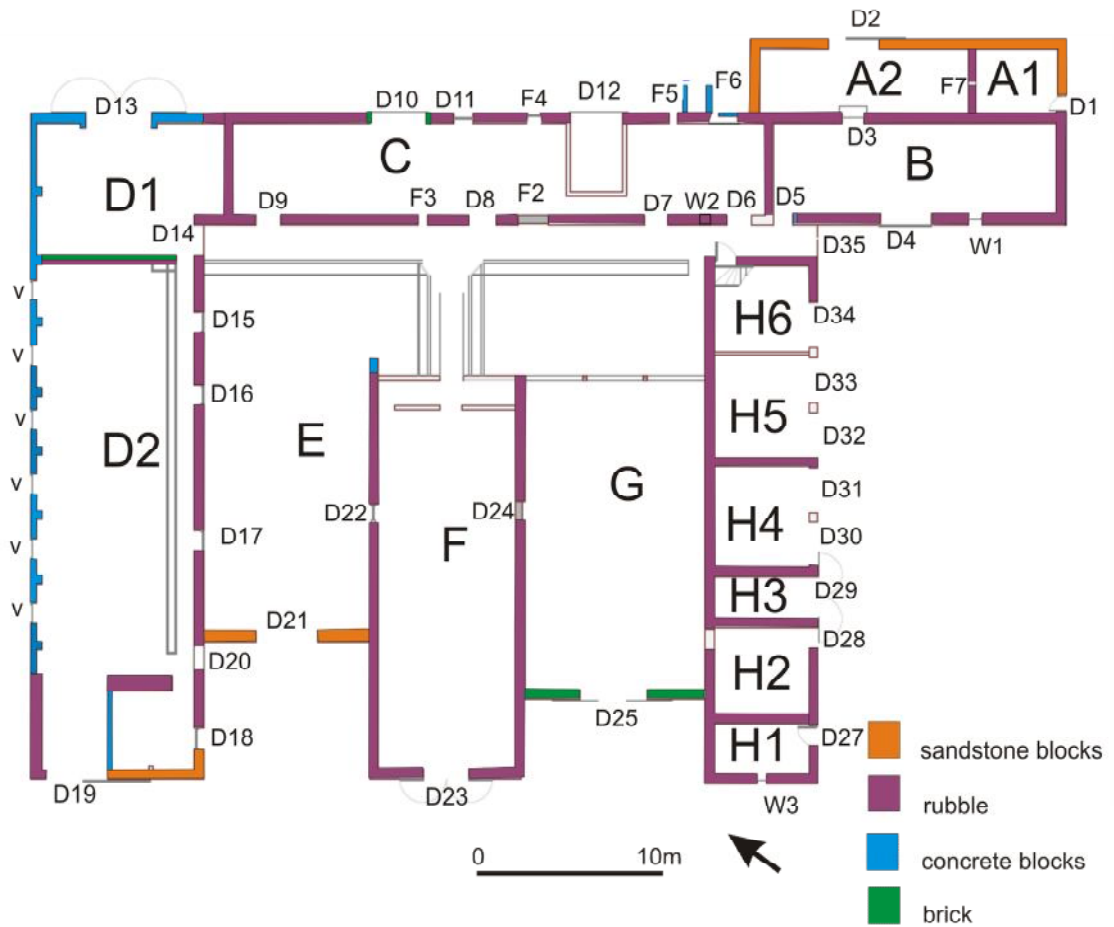
## 5 Methodology

5.1 The ground plan (illus 16) and elevations (illus 69-70) have been annotated to show details which may help in understanding the development and history of the building.

5.2 The areas recorded were photographed. The full set of photographs will be supplied for the archive and annotated plans in the present report (illus 66) indicates the position of each.

## 6 The Buildings

For clarity, although the ranges lie NW/SE and NE/SW, approximate compass positions will be used in the report.



Illus 16 Plan annotated from drawing courtesy of Lippe Architects and Planners.

### Building A

Orientation Approx N/S. Abuts and long axis lies parallel to Building B.

Dimensions 4 x 17m

Present/recent use Unknown

Original use Unknown



**Illus 17 S wall of Building A, with D1**



**Illus 18 Building A, E wall.**

Walls Squared red sandstone blocks of irregular sizes.

Roof Slate with hipped ends to N and S. A-frame and sarking.

Doors and windows

*S wall*

**D1** W: 0.91m H: 1.95m. Red sandstone rybats to E with dressed margins, W side of doorway formed by quoins of Building B. Sandstone lintel keyed into corner of Building B. Plank door.



Illus 19 Building A, door D1



*E wall*

**D2** W: 2.78m H:1.93m. Red sandstone rybats. Wooden lintels. Sliding corrugated door.

*W wall (is E wall of Building B)*

**D3** W:1.22m H: 2.04m. Wooden lintels. Plank door. Ground steps down into Building B.

Interior

Rubble stone wall divides interior to two unequal compartments.

**F7** Squared hole c 300mm square near base of partition wall; appears intentional.  
Function unknown.



**Illus 20** Building A, area A1 looking N from door D1



**Illus 21 Building A, Area A2, looking N**

**Building B**

Orientation Approx N/S

Dimensions 15.7 x 6.1m

Present/recent use Derelict



**Illus 22 The steading from S, showing Buildings A, B and H**



**Illus 23 S gable Building B, with Building A abutting it.**

Original use Stable?

Walls Rubble, including sandstone rubble. Some of sandstone very poor quality with pebbles in it. Red sandstone quoins.

Roof Slate with ceramic ridge. A-frame. Sandstone skewes and skewputts at S gable. Odd square finial on apex at S gable.



**Illus 24 Building B skewputt**



**Illus 25 Building B S gable finial and F1 vent**

Doors and windows

*W wall*

**D4** W: 2.77m H: 2.43m. Sandstone rybats on N side, widened to S with brick up S side, Concrete lintel. Iron pivots for original door on N side.

**D5** W: 0.97m H: 1.90m. Brick at sides, wooden lintel.

**W2** W: 0.97m H: 1.18m Splayed internally. Internally the alcove goes down 0.92m to ground level, but this does not appear to have been a blocked doorway.

**F1** Air vent c 400mm square with sandstone lintel, sill and rybats. Below apex of gable

Interior Faint vertical scars on inner face of E wall can probably be interpreted as trevis scars, suggesting 2 stalls to the N of door D3 and 6 stalls to the S of it, all approximately 1.75/1.80m wide.



**Illus 26 Building B looking N**



**Illus 27 Building B looking S Red arrows indicate some of possible trevis scars**

## Building C

Orientation Approx N/S

Dimensions 29m x 6.1m

Present/recent use Grain processing

Original use Threshing mill, with grain loft above.

Walls Rubble stone

Roof Slate

Doors and windows

*E wall*

**D10** W: 3.08m H: 3.03m Brick sides, concrete lintel. Metal sliding door.



**Illus 28 Building C, door D10**

**D11** W: 1.05m H: 1.65m Sandstone rybats and lintel (internal wooden lintel).  
Stone sill. Wooden door.

**D12** W: 2.90m H: 2.95m. Sandstone rybats. Metal sliding door. Now opens into grain bin.



**Illus 29 Building C, door D11**

**F4** W: 0.72m, splays internally to 1.10m. H: 0.75m Red sandstone surround.  
Blocked with concrete.



**Illus 30 Building C, F4**

**F5** W: 0.48m H: 0.55m Modern opening 1.15m above ground, opens into metal-lined chute between drier and grain tower.

Concrete supports for a tank (diesel) abut the wall beside F5.



**Illus 31** Building C, F5, grain chute



**Illus 32** Hatch in grain tower opposite F5 chute opening



**F6** W:1.43m, splays internally. H: 1.53m. Concrete blocked. This has small window above and is probably where the mechanism from mill wheel came through wall.



**Illus 33 F6 externally**



**Illus 34 F6 internally**

*W wall (W wall of original E range)*

- D6** W: 1.53m H: 2.0m sliding wooden door. Sandstone rybats. Stone lintel.
- D7** W:1.23m H: 1.85m. Sandstone rybats and lintel. Plank ½ door
- D8** W:1.61m H:1.95m Sandstone rybats. Wooden lintels. Wooden sliding door on N side but iron pivots for earlier door from S side.
- D9** W:1.38m H: originally 2.33m with sandstone rybats to this height, but later lower concrete lintel H: 1.90m



Illus 35 Steading from E

- W1** W:0.68m H: 0.78m Sandstone rybats, lintel and sill. Stone blocked.
- F2** W: 1.66m. H: 1.75m Sandstone rybats. Timber lintel. Concrete blocked.  
Appears to have been a blocked doorway.
- F3** W: 0.15m externally splaying to 0.45m internally. H:0.43m. Sandstone rybats and lintel externally, wooden internal lintel (into C).



**Illus 36** Looking N along W wall of Building C (RHS) from door D6

Interior Originally the mill had a loft- this appears to have been removed and walls raised by c600mm when modern grain handling equipment was built in. Originally this was water-powered threshing mill. When the threshing mill was removed, new grain handling equipment was installed in the mill, with the walls slightly raised and the loft floor removed. A seed dressing machine remains alongside a Ransomes' gravity flow grain drier with chutes for grain distribution. This appears to be model 195/6, the manual for which is dated 1961 ([https://www.reading.ac.uk/web/files/merl/TR\\_17RAN\\_cat.pdf](https://www.reading.ac.uk/web/files/merl/TR_17RAN_cat.pdf)).



Illus 37 Building C interior looking S. Blocking F2 on RHS



Illus 38 Building C interior looking N



Illus 39 Seed dressing machine (foreground) with grain drier behind.



Illus 40 Advertisement for Ransomes Gravity Flow grain drier model 195/6.  
<http://www.westlakeploughparts.co.uk/140375-ransomes-model-195-196-gravity-flow-grain-drier-service-manual-and-parts-list.html>

## Building D

Orientation Approx E/W

Dimensions 36m x 4.6m. Widens at E end to 5m where it incorporates the N end of a continuation of Building C.

Present/recent use Cattle.

Original use Cattle?

Walls Most of the N and E walls are of reddish concrete blockwork. However, The W end of the N wall is of sandstone rubble and rubble walling is evident at the base of the whole N wall, suggesting that the existing walls were built using the base of an earlier wall for the foundation. At the S end of the E wall, there are also short lengths of earlier rubble walling. The W gable is of sandstone blocks to the wall head, with concrete blocks above. The S wall is rubble stone.



**Illus 41 Building D. W gable with sandstone to wall head and concrete blockwork above. Door D19.**



**Illus 42 Building D. E gable with concrete block wall. Door D13 with vent above.**





**Illus 43 Building D. N wall, looking E. Stonework of 19<sup>th</sup> C wall in foreground. Vents in concrete wall.**



**Illus 44 Building D. Inside of N wall with 19<sup>th</sup>-century stone wall in foreground and at base of concrete wall**

Roof Asbestos on metal framework. Perspex roof lights.

Doors and windows

*N wall*

Metal covered vents.

*E wall*

**D13** W: 3.67m H: 2.48m Metal lintel. Metal sliding door.

*S wall*

**D14** W: 1.83m H: 2.14m. Sandstone rybats, wooden lintels

**D15** W: 1.07m H: 2.03m sandstone rybats. Concrete lintel. Blocked with concrete.

**D16** W: 1.07m H: 2.63m sandstone rybats. Concrete lintel. Blocked with concrete.

**D17** W: 1.07m H: 2.63m sandstone rybats. Concrete lintel. Blocked with concrete.

**D18** W:1.27m H: 2.0m. Sandstone rybats to W, concrete to E, concrete lintel. Wooden sliding door. Probably original door widened to E.

**D20** W: 1.07m H: 2m R4ed sandstone rybats and lintel. Stone blocked

*W wall*

**D19** W:3.36m H: 2.70m Sandstone rybats. Metal lintel. Metal sliding door.

Interior

A brick partition between the N area (D1) and the larger S area (D2) was built on the remains of an earlier red sandstone wall. The S area (D2) had been concrete lined and has a raised feed pass along the S side, indicating that this part of the building has been used as a cattle court.



**Illus 45** Building D interior looking E to partition, showing brick wall on sandstone base wall  
The SW corner was partitioned off and formed two tied cattle stalls.



**Illus 46** Building D. SW corner. Tied cattle stalls.

## Building E



**Illus 47 Building E. Roofed cattle court from W. Door D21.**

Orientation Approx E/W

Dimensions 9m widening to 11m at E end x 22m (to wall of C) or 19.5m (to feed pass)

Present/recent use Derelict

Original use Cattle court, formerly open court, roofed and W wall built by 1901 OS map (illus 9)

Walls W wall sandstone blockwork. N and S utilised walls of Buildings D and F- both rubble stone.

Roof Slate, hipped at W. A couples.

Doors and windows

*W wall*

**D21** W: 3.4m. H: 2.70m. Sandstone rybats both sides. Sliding metal door.

Interior

Open cattle court with concrete feed pass at E end.



**Illus 48 Building E. Interior from W from D21**

## Building F



**Illus 49 Building F from W. Door D23.**

Orientation Approx E/W

Dimensions 8m x 22m (to feed pass).

Present/recent use Machinery store.

Original use Cattle court

Walls Rubble stone

Roof Slate. Hipped at W end.

Doors and windows

*N wall*

**D22** W: 1.08m H: 2m. Red sandstone rybats, lintel and sill. Blocked with small rubble stone. Opened into court Building E

*S wall*

**D24** W: 1.05m H: 1.83m. Red sandstone rybats and lintel. Concrete blocked.

*W wall*

**D23** W: 2.65m. H: 2.20m. Sandstone rybats on N, probably widened on S side and raised into roof line. Metal sliding door.

Interior Feed pass at E end.



**Illus 50** Building F. Interior from E

## Building G

Orientation Approx E/W

Dimensions 9.5m wide, widening to 12m at E end x 25m to wall of Building C or 22m to feed pass.

Present/recent use Cattle court, at present bale storage.

Original use Cattle court. Originally open dung court, roofed by 1901 OS map.



**Illus 51** Building G from W. Door D25

Walls W wall of brick. N and S utilised walls of Buildings F and H., but height of S wall raised by c 600mm, roof supported on brick pillars on top of wall at N. Inner face of walls concrete lined.

Roof Metal roof framework with corrugated asbestos and plastic roof lights.

Doors and windows

*S wall*

**D26** W:1.08m H: 2.12m. Red sandstone rybats and lintel. Plank door into Building H2.

*W wall*

**D25** W: 3.66m. H: 3.32m. Brick sides, concrete lintel. Metal sliding door.

Interior Feed pass at E end



**Illus 52 Building G. Interior looking E**



**Illus 53 Building G. Interior looking NE. Door D24**



## Building H



**Illus 54 Building H from S**

Orientation Approx E/W

Dimensions 6m x 28m.

Present/recent use Derelict

Original use Cart bays



**Illus 55 Building H. S wall detail of doors D32-D34**

Walls

Sand stone rubble with red sandstone blocks as quoins, and as pillars between bays.

Roof Slate, hipped at W end. Metal skylights.



**Illus 56** Detail of stonework between doors D29 and D30

Doors and windows

*E wall*

**Door and stair to loft.** Not measured. Plank door with hole cut out, possibly for a cat to get into the loft to catch vermin.

*S wall*

**D27** W: 1.07m H: 2.15m. Red sandstone rybats and lintel. Plank door into H1

**D28** W: 1.09m H: 2.15m. Red sandstone rybats and lintel. Plank door into H2

**D29** W: 2.20m H: 2.10m. Red sandstone rybats. Grey slatey stone lintel. Inner wooden lintel. Opens into H3.

**D30, D31** W to pillar: 2.44m H: 2.10m. Pillar chamfered. Grey slatey stone lintels. Inner wooden lintels. Open into H4.

**D32, D33** W to pillar: 2.445 and 2.50mm H: 2.10m. Pillar chamfered. Grey slatey stone lintels. Inner wooden lintels. Open into H5.

**D34** W: 2.47m H: 2.10m. Red sandstone rybats. Grey slatey stone lintel. Metal garage type door. Opens into H6.

**D35** W: 1.85m H: 1.85m. Red sandstone rybats to W, E side abuts Building B. Slate lintel. Opens into passage between Building H and Building B

*W wall*

**W3** W: 0.62m H: 1.22m Red sandstone rybats, lintel and sill. 2/2 sash.



**Illus 57 Building H. W wall.**

Interior

Ground floor divided into six bays with rubble stone internal walls. No interior fittings remained. H1 with a window may have been a chaumer. H2 has access to Building G, originally a dung court. H3-H6 have wide openings and are the original cart bays; H3, being narrower may have been for a gig rather than a cart. Internal rough wooden pillars supported the loft in the wider bays H4-H5. H6, which was a chemical store, could not be entered.

A doorway in the E wall from the passage between Buildings H and B opened to a stair to a loft above H2-H6. H1 open to roof. Four windows with red sandstone rybats, lintels and sills gave light into the loft (Elevations illus 67-68)



**Illus 58** Building H, interior of H1



**Illus 59** Building H. Interior of H2



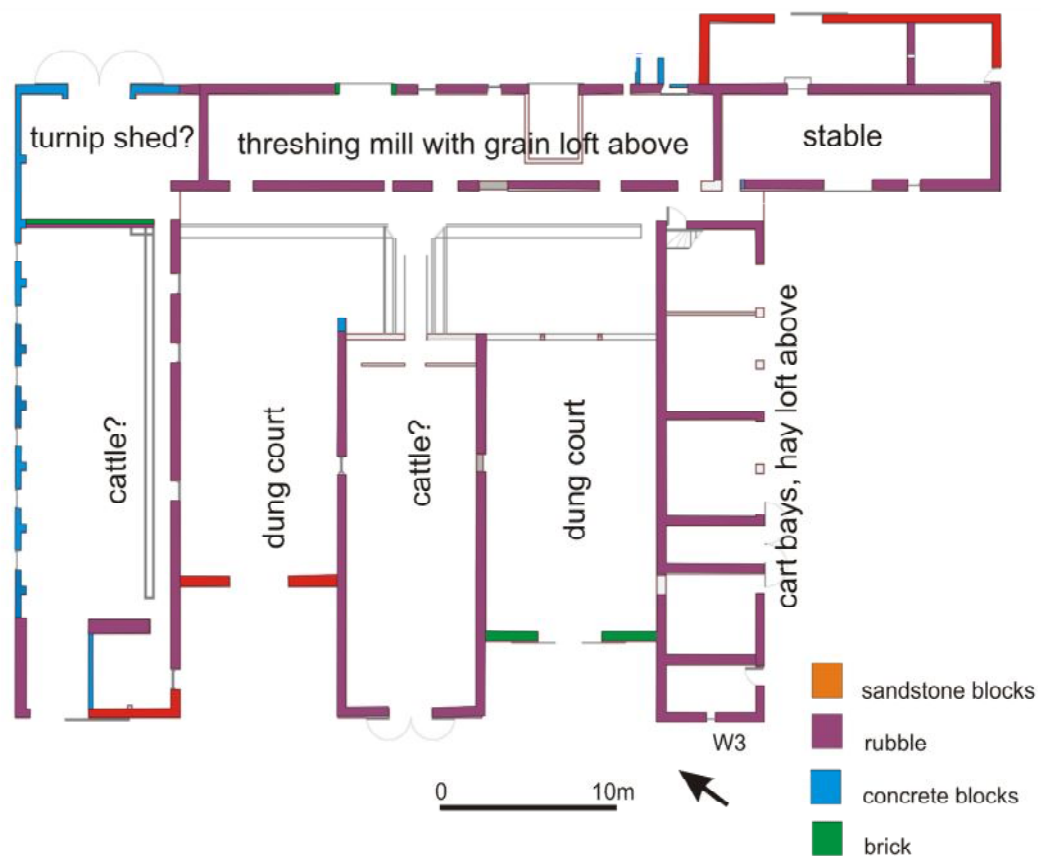
**Illus 60** Building H. Interior of loft looking W from stair



**Illus 61** Building H. Stair to loft with possible cat hole.

## 7 Discussion

A farm has existed at Pitnamoon from at least the 18<sup>th</sup> century and was described as a good farm in 1799 when it was part of the Phesdo Estate but the existing buildings developed through the 19<sup>th</sup> century. In 1844 the Phesdo Estate was sold by Alexander Crombie and is described as having houses and steadings ‘of superior description and in good repair’ built by the former owner. It was bought by John Gladstone, and became part of the Fasque Estate, which was inherited by his son, Thomas Gladstone in 1851.



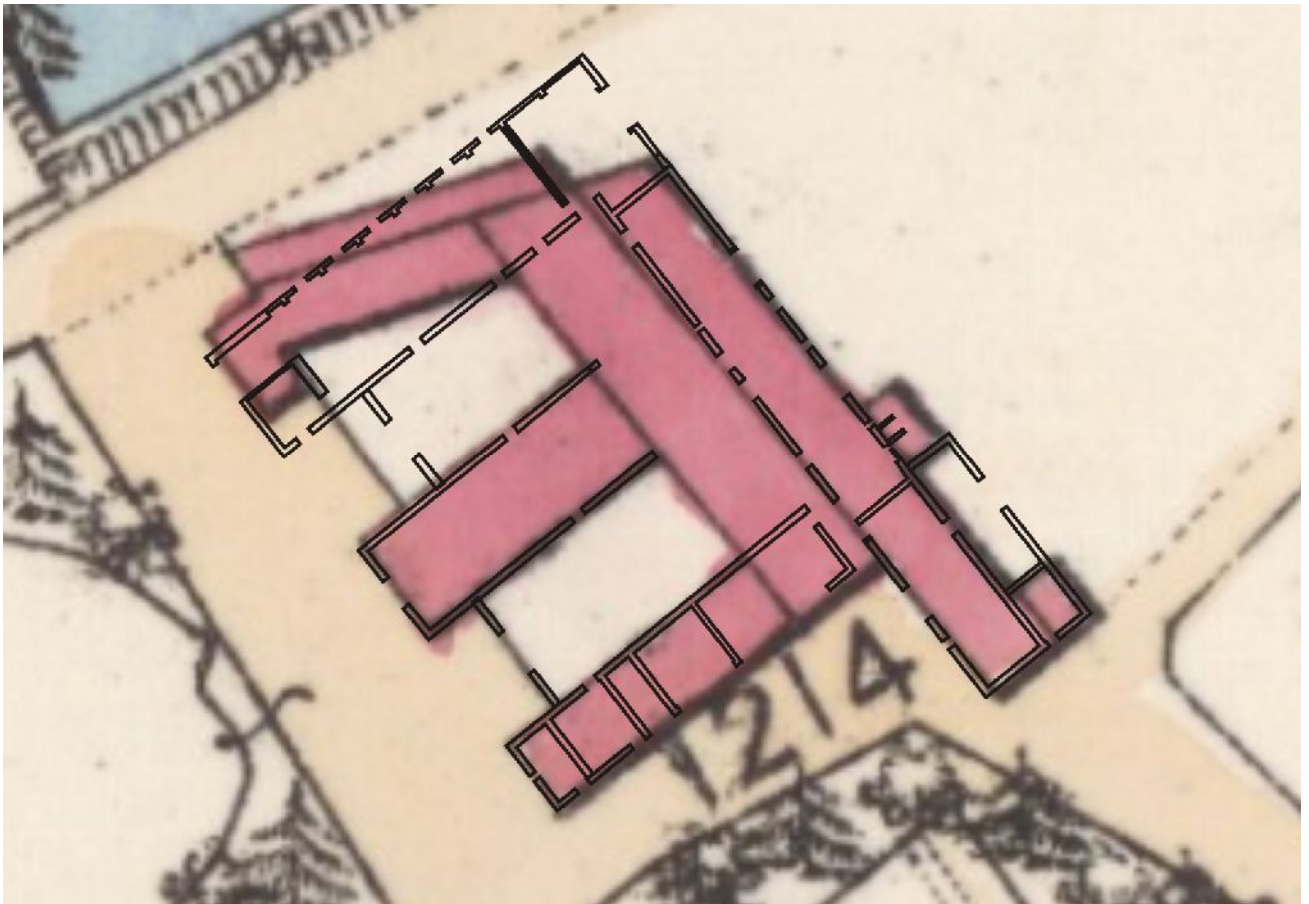
**Illus 62 Interpretation of 19<sup>th</sup>-century steading. Annotated from plan courtesy of Lippe Architects and Planners**

By c 1852, the tenant at Pitnamoon was William Brown who took over his brother's tenancy and continued to farm the property until his death in 1912. The 1863 and 1901 OS maps show how the buildings developed during Brown's tenancy and the ownership of Thomas Gladstone. Thomas Gladstone was responsible for the Fasque Home Farm built 1872 (<https://www.buildingsatrisk.org.uk/details/915276>) and it is perhaps not surprising that the stonework appears similar – it is probable that quarries on, or owned by, the estate were used for both.

For half a century from 1852 to 1912, William Brown was the tenant of Pitnamoon. The original parts of the steading that survive were probably built around the time of the beginning of his tenancy and must reflect his farming practices.

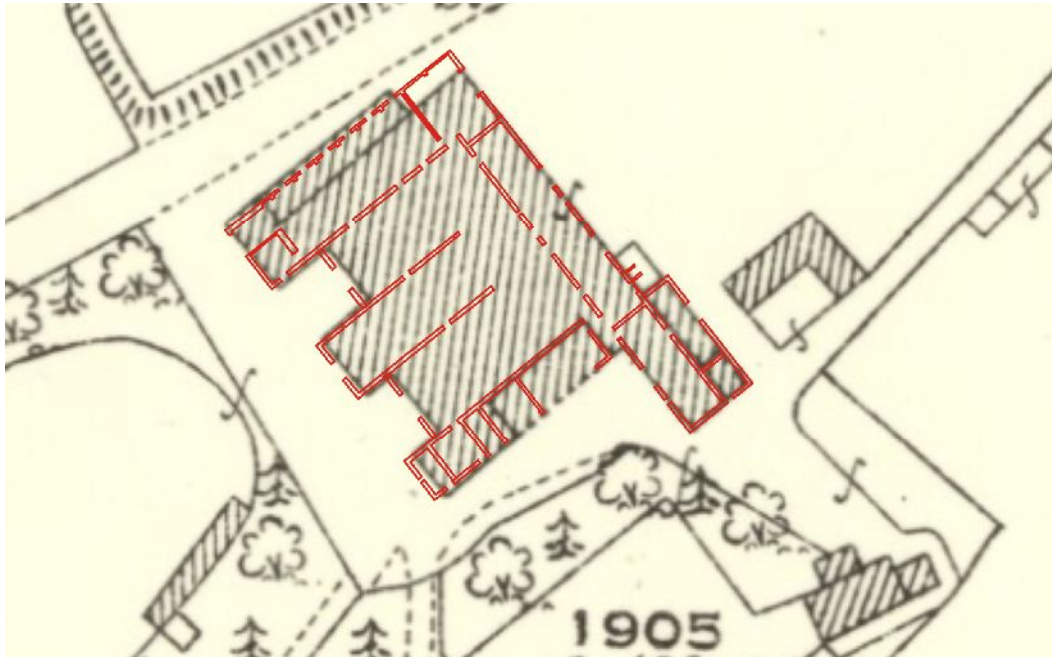
The newspaper references indicate that he was a forward looking farmer of his time, prominent in establishing a local farming club, and throughout his life breeding, showing and selling draught horses, Angus and Shorthorn cattle and Leicester sheep. From 1873 until his death, William was a member of the Royal Highland and Agricultural Society of Scotland (<https://archive.rhass.org.uk/>).

Early in his tenancy, the water-powered threshing mill (Building C) appears to have been built, with an advertisement in 1858 looking for contractors to build the wheel pit and the tail race. The mill could not have operated without these, so this would appear to date its construction.



**Illus 63 Plan of steading overlaid on detail of 1<sup>st</sup> OS map of 1863.**

Brown's considerable interest in cattle is reflected by the provision of more covered winter accommodation for them by the roofing of the open dung courts; this appears to have happened by 1901 (Buildings E and G).



**Illus 64 Plan of steading overlaid on detail of 1901 OS map**

After William Brown's death, the tenancy, advertised in 1912 as comprising house, steading and water-powered threshing mill and 312 acres, was taken up by the Fotheringham family, who appear to have farmed there for much of the 20<sup>th</sup> century. During their tenancy the water mill was removed, but the mill building continued in use for grain with a grain dryer and seed dressing machine in the mill building (Building C) and a grain tower outside it.

Doorways were raised and widened for tractor access and the N wall of building D rebuilt. Many of the internal doors were blocked and new concrete feeding passes built in buildings D, E, F and G, over the footprint of the earlier W range.

This is an interesting example of the development of a steading of a moderately large tenanted farm throughout the 19<sup>th</sup> century, with the influence of a tenant interested in new farming practices supported by an Improving landowner.





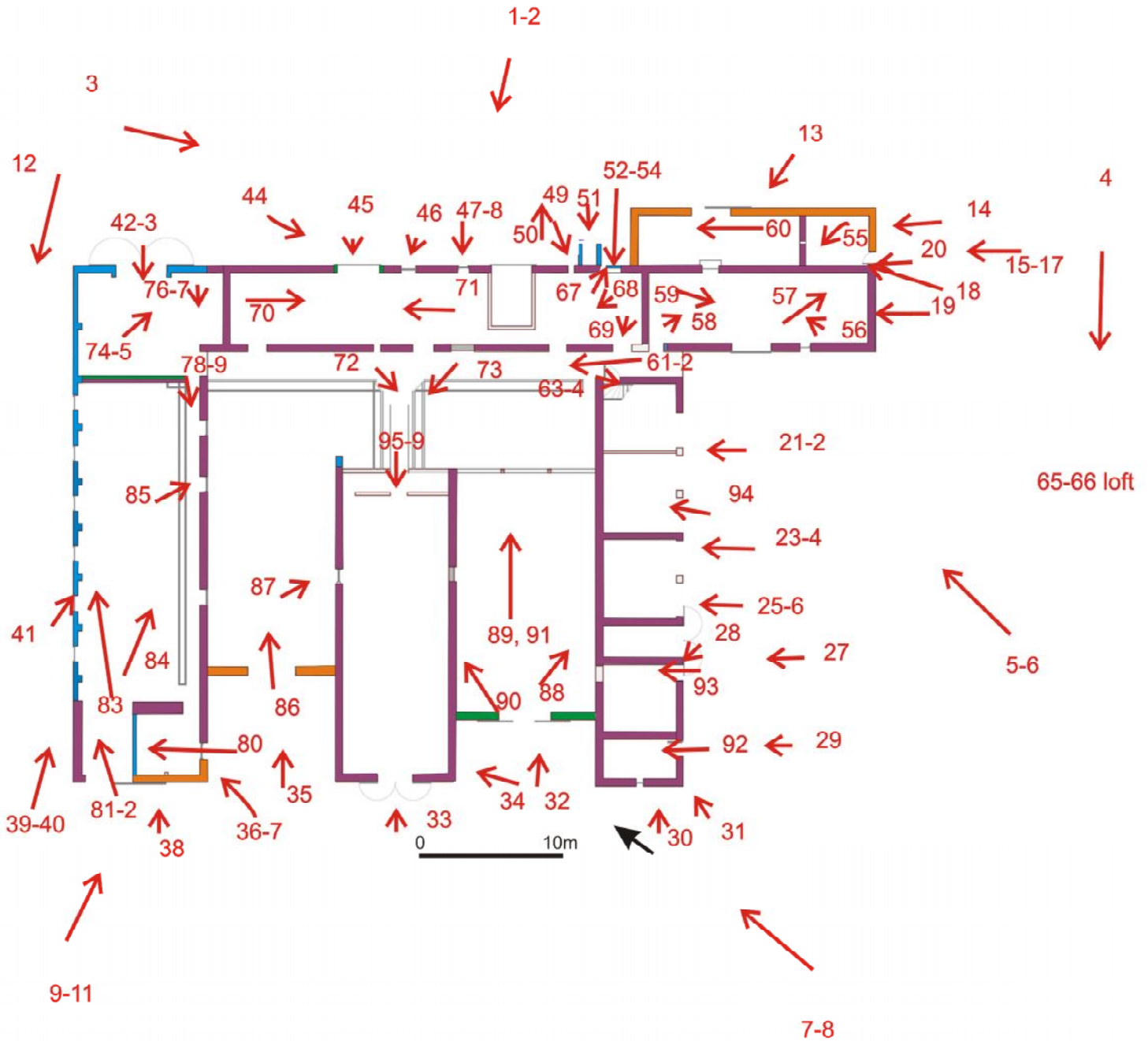
**Illus 65 Building H . S wall. Key on nail beside door D29.**

## References

Robertson, G 1812 *A General View of Kincardineshire; Or, The Mearns; Drawn Up and Published by Order of the Board of Agriculture*. Richard Phillips:London.

## 8 Archive

A full set of photographs with the photo location plans (Illus 66) will be supplied to the Aberdeenshire SMR and to the HES archive.

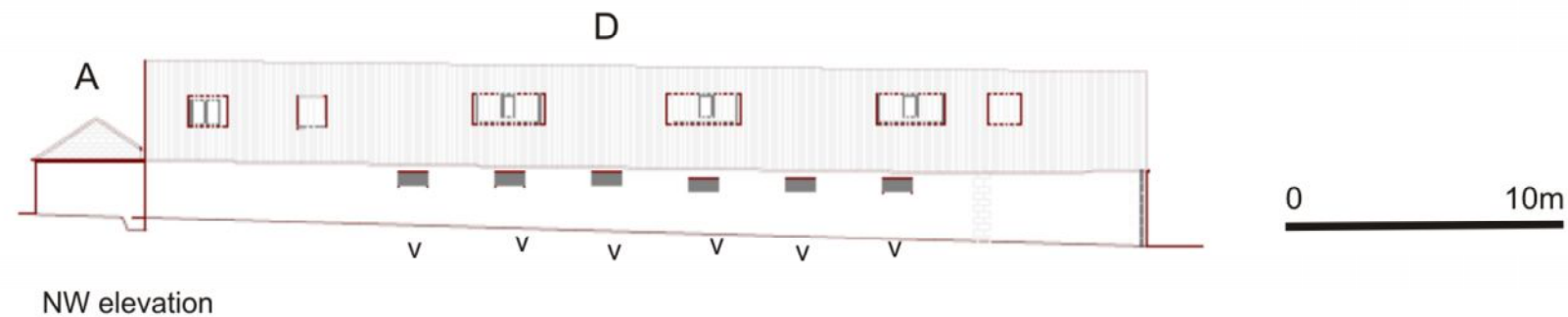
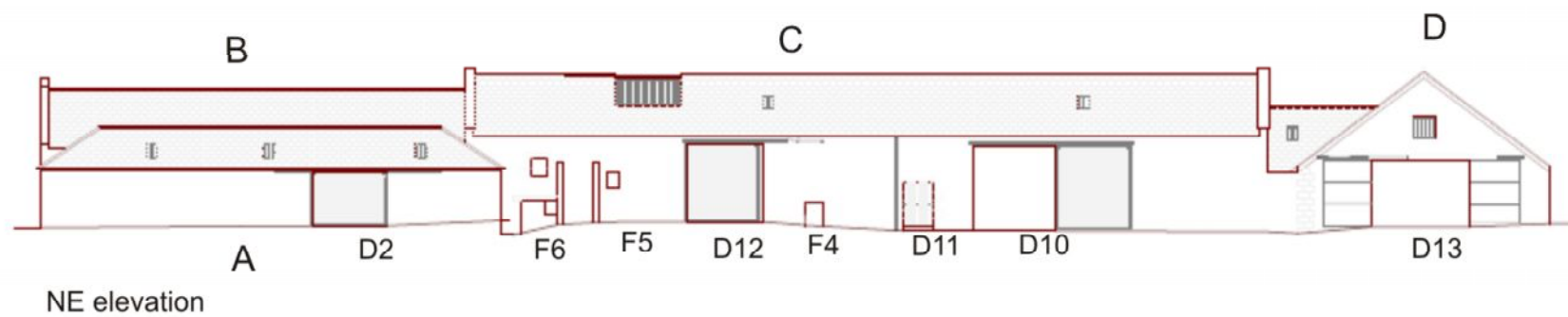


Illus 66 Photo locations. Annotated from plan courtesy of Lippe Architects and Planners

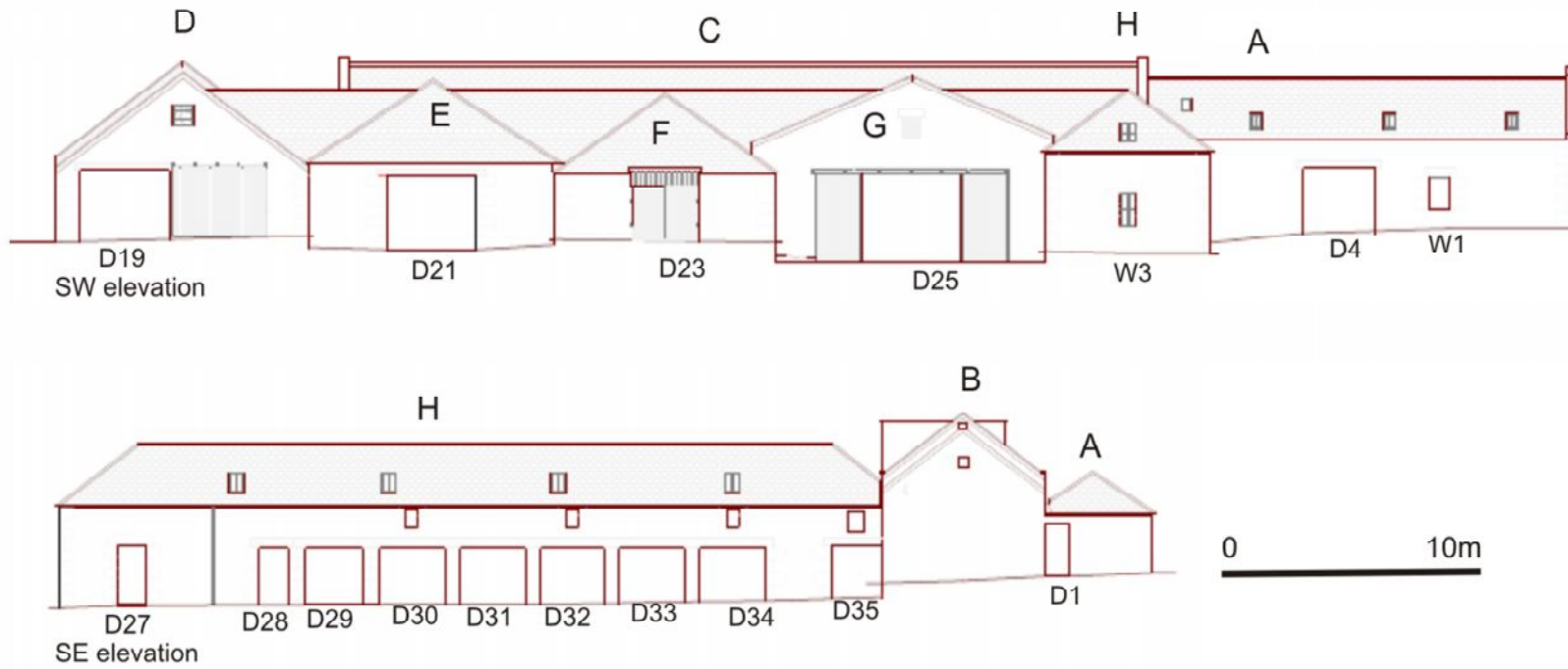
<b>Photo number</b>	<b>Content</b>
1-2	Steading from E
3	Looking S to cottar house
4	Looking W across steading to farmhouse
5-6	Steading from S
7-8	Steading from SE
9-11	Steading from road looking SE
12	Looking W along N wall Building D
13	Building A, E wall
14	Building A, S wall, D1
15-17	Buildings A, B. S walls
18	SE skewputt Building B
19	Building B finial S gable
20	Building A. D1
21-22	Building H. D32-D34
23-24	Building H. D30-D32
25-26	Building H. Detail wall between D29 and D30
27	Building H. D27-29
28	Building H. Detail pillar between D28 and D29
29	Building H. Detail D27
30-31	Building H, W wall
32	Building G, W wall, D25
33-34	Building F, W wall, D 23
35	Building E, W wall
36-38	Building D, W wall, D19
39-41	Building D, N wall looking E with vents
42-43	Building D, E wall, D13
44	Building C, E wall, D10, D11
45	Building C, D10
46	Building C, D11
47-48	Building C, F4
49	Building C,F5 into grain dryer
50	Chute into grain tower opposite F5
51-54	Building C, F6
55	Building A1, interior looking N
56	Building B, interior looking N
57	Building B, interior looking SE
58	Building B interior looking N
59	Building B, harness hooks on W wall
60	Building A2, interior looking N
61-62	Passage and feed pass between Building C and E-G, looking N
63-64	Building H, stair to loft
65	Building H, lost looking W
66	Building H, loft looking E
67	Building C interior F6
68	Building C, interior. Seed dresser in foreground. Ransomes

---

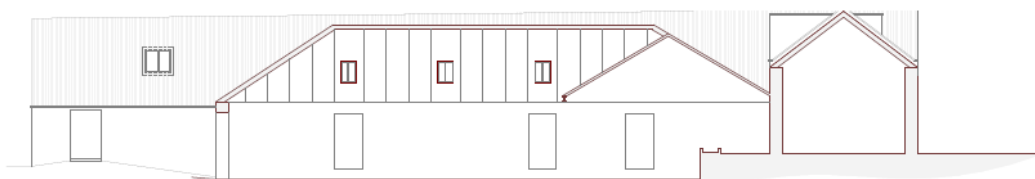
	grain dryer behind
69	Building C interior looking W through D6 to door to Building H loft
70	Building C interior from N end looking S to grain dryer
71	Building C interior from beside dryer looking N
72-73	Feed pass E of Building F
74-75	Building D, E end, looking S to stubs of earlier walls
76	Building D, interior looking W from E end, partition
77-79	Building D interior, looking W along feed pass from partition
80	Building D, tied cattle stalls
81-82	Building D interior, looking along inside of N wall, showing old rubble wall and newer concrete
83	Building D interior looking E to partition
84-85	Building D interior looking SE
86	Building E interior looking E
87	Building E interior, D22
88-91	Building G interior looking E
92	Building H1 , interior from door D27
93	Building H2, interior from door D28
94	Building H5 interior from D32
95-99	Building F interior looking W



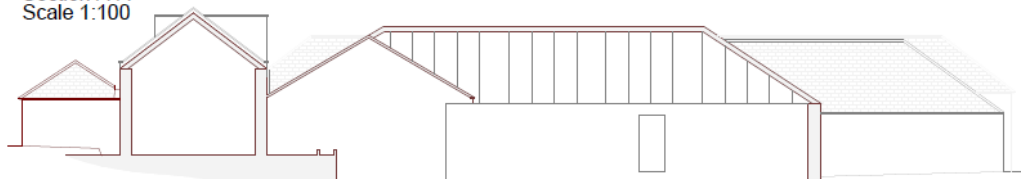
Illus 67 NE and NW elevations Annotated from drawing courtesy of Lippe Architects and Planners



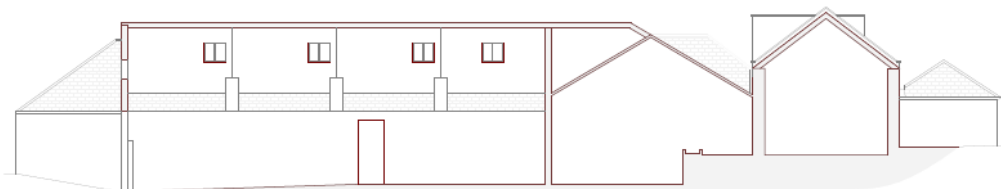
Illus 68 SE and SW elevations. Annotated from drawing courtesy of Lippe Architects and Planners



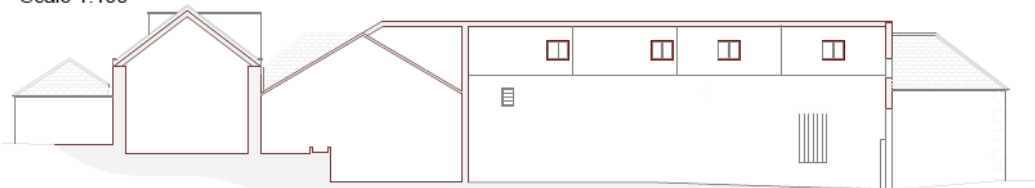
Section A-A  
Scale 1:100



Section B-B  
Scale 1:100

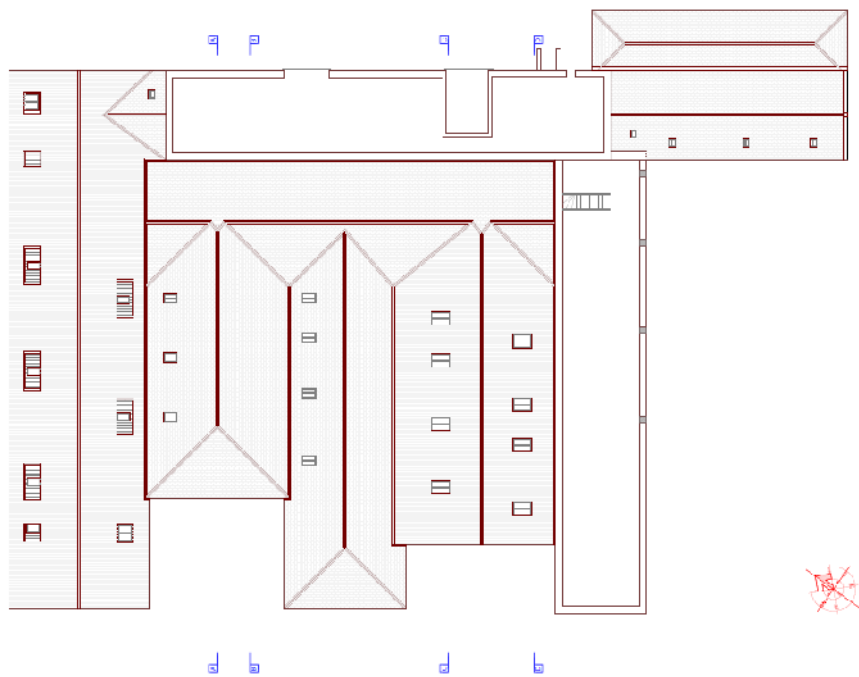


Section C-C  
Scale 1:100



Section D-D  
Scale 1:100

Illus 69 Sections courtesy of Lippe Architects and Planners



**Illus 70 Roof and loft plan courtesy of Lippe Architects and Planners**