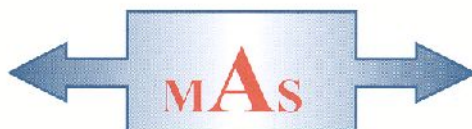


NORTH LASTS QUARRY 2018
PETERCULTER
ABERDEEN



Archaeological Watching Brief
Carried out 25th June 2018
by
Murray Archaeological Services Ltd



Report No: MAS 2018-13
by
H K Murray and J C Murray

H K Murray BA, PhD, MCIfA, FSA Scot
J C Murray BA, MCIfA, FSA Scot, FMA
Hill of Belnagoak, Methlick, Ellon, Aberdeenshire AB41 7JN
Telephone: (01651) 806394 e-mail: cmurray@btinternet.com

NORTH LASTS QUARRY 2018
PETERCULTER
ABERDEEN

-Archaeological Watching Brief -

H K Murray and J C Murray

1. Background
 - 1.1 In the light of proposals to extend quarrying activities at North Lasts Quarry, Peterculter, Aberdeen, it was decided that a programme of archaeological work should be carried out to assess the survival and nature of any archaeological remains on the proposed site.
 - 1.2 This work was undertaken in the context of Scottish Planning Policy (PAN 2/2011, SPP, HESPS).
 - 1.3 Murray Archaeological Services Ltd was commissioned by Leiths Scotland Ltd to undertake the work.
 - 1.4 A Written Scheme of Investigation (WSI) was prepared and approved on 24/10/2017 by Bruce Mann, Archaeology Services, Aberdeenshire Council, on behalf of Aberdeen City Council.
 - 1.5 The main part of the evaluation was undertaken on 21st and 22nd November 2017. (Murray & Murray 2017). However the final part of the evaluation was delayed until 2018 when an overhead electricity cable had been re-routed.

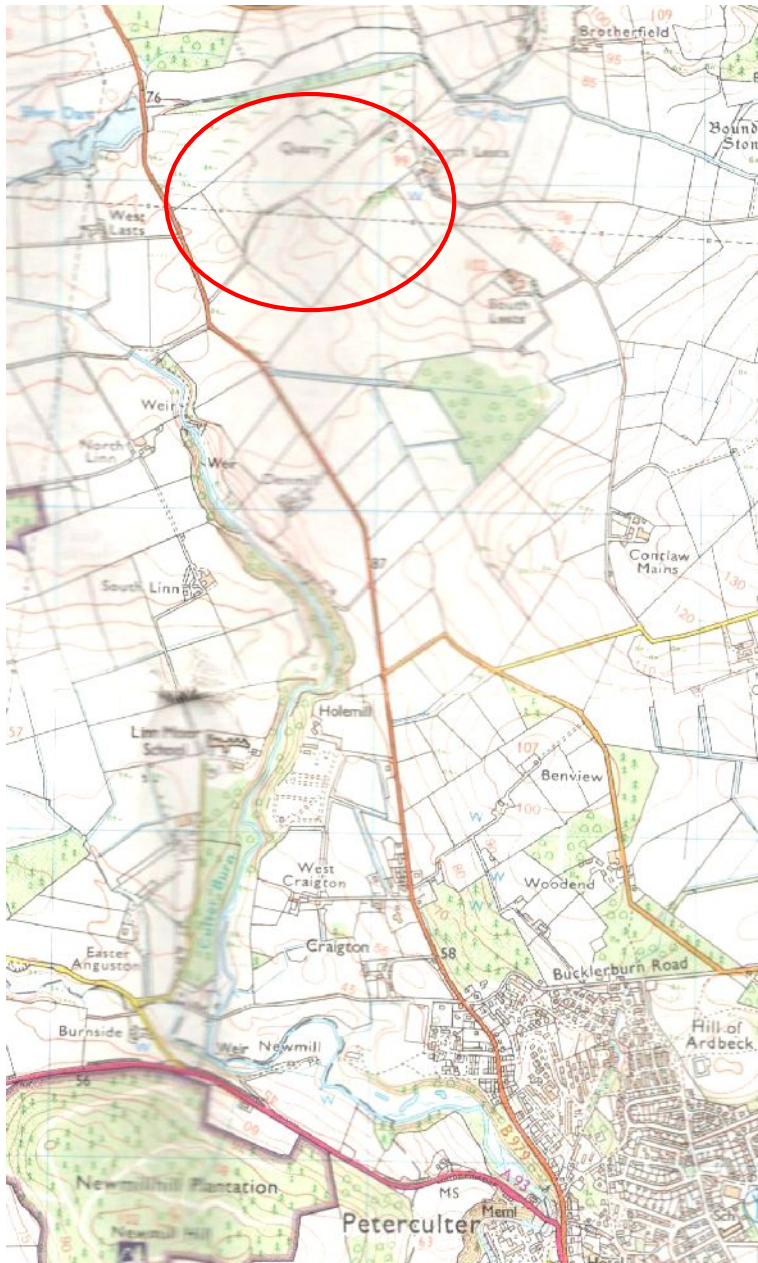
1.6 The present report covers the watching brief along the former line of the cable, which was undertaken on 25th June 2018.

2. The Site

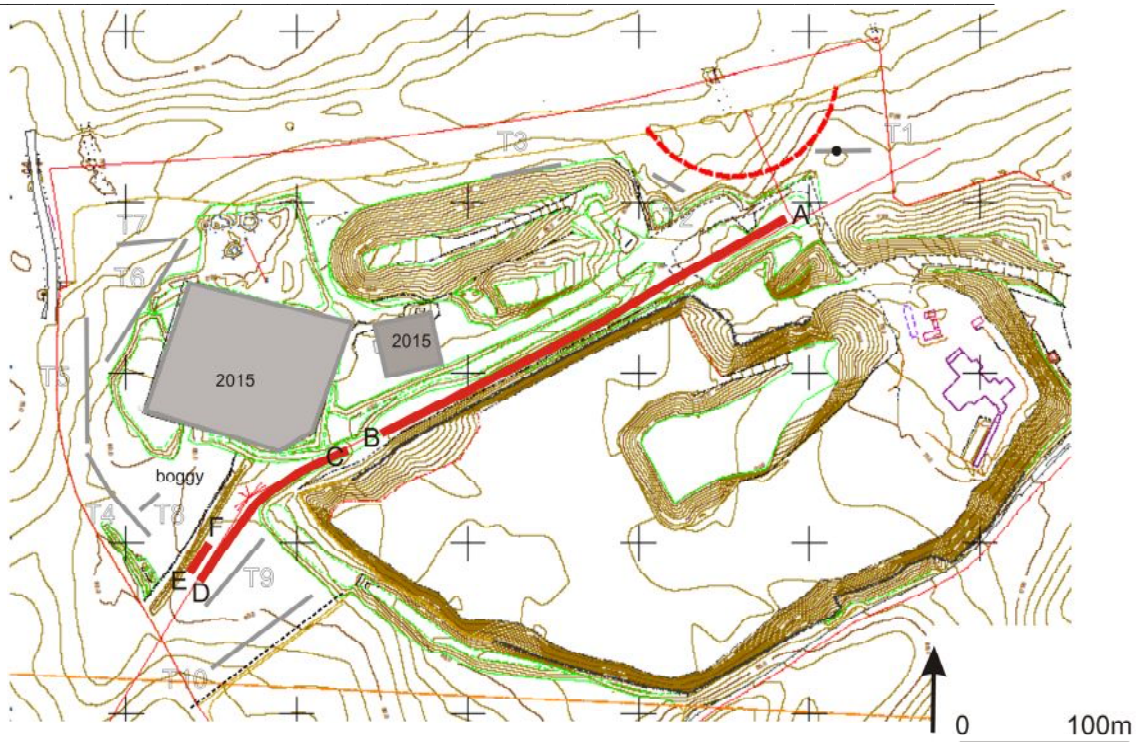
2.1 The site (illus 1) lies some 2.5km N of Peterculter, to the E of the B979.

Parish: Peterculter. The N boundary follows the line of the Ord Burn.

NGR: NJ82641 to NJ823040 (line of area observed in 2018).



Illus 1 Location of site. Ordnance Survey © Crown copyright (2007) All rights reserved. Licence number (100049810). Site indicated by red circle.



Illus 2 Red lines A-B, C-D and E-F denote the soil strip watched. Grey areas indicate areas evaluated in 2015, Grey lines indicate trenches evaluated in 2017. Background drawing courtesy of Leiths.

- 2.2 A desk top survey of the area had been undertaken in 2015 (Murray & Murray, 2015a)
- 2.3 Two areas of the quarry had been evaluated in 2015 (Murray & Murray, 2015b). No archaeological finds or features were exposed.
- 2.4 A further 10 trenches were excavated in 2017 (Murray & Murray 2017). No archaeological finds or features were exposed.
- 2.5 At the time of the watching brief along the former electricity cable line, the ground was in rough vegetation, with the bases of some of the electricity poles and cable stays cut off and remaining in situ. The line ran along a narrow ridge between bunds protecting the existing quarry workings and a roadway to the areas previously evaluated.

3 Methodology

- 3.1 The cultivated topsoil was removed by a full slew excavator with a 2m wide toothless ditching bucket. Any possible features were cleaned and excavated by hand.
- 3.2 All mapping was done with a Magellan Mobile Mapper 120 GPS and Glonass.

4 Results of the Watching Brief

Section A-B

GPS NE end (A): 382690,804194 SW end (B): 382448, 804065

Orientation: NE/SW Length: 274m Width: 4.0- 4.5m

Depth above natural: For much of length c. 500mm

Stratigraphy: Topsoil and deposited topsoil over compact stony sand with boulders.

Features None



Illus 3 Section A-B, looking SW from point A towards point B

Section C-D

GPS NE end (C): 382430, 804057 SW end (D): 382342, 803977

Orientation: NE/SW, then curving more to S. Length: 120m Width: 2.0m

Depth above natural: 400mm

Stratigraphy: Topsoil and deposited topsoil over compact stony sand with boulders.

Features None



Illus 4 Section C-D looking S

Section E-F

GPS SW end (E): 382336, 803983 NE end (F): 382347,804003

Orientation: NE/SW. Length: 22m Width: 2.0m

Depth above natural: 350- 400mm

Stratigraphy: Topsoil and deposited topsoil over compact stony sand with boulders.

Features None

6 Finds

None.

7 Discussion

There was no evidence of any archaeological finds or features. The desktop survey (Murray & Murray 2015a) had shown that this area had been cultivated from the mid 18th century and modern plough marks were evident along much of the observed soil strip.

8 Impacts and Mitigations

8.1 Impacts None.

8.2 Mitigations

- (i) On the basis of the evaluation there is no perceived need for any further archaeological investigation.
- (ii) The paucity of surviving archaeology within the evaluation area does not preclude the possibility of chance finds or archaeological discoveries outwith the evaluation trenches. Should such chance finds occur, then the Archaeology Service, Aberdeenshire Council, on behalf of Aberdeen City, or Murray Archaeological Services Ltd, must be informed immediately so that an appropriate archaeological response can be formulated and agreed by all parties concerned.

9 References

Murray, H K & Murray, J C 2015a *North Last Quarry, Peterculter. Desk top survey*. MAS 2015-36. Unpublished report available in Aberdeen SMR.

Murray, H K & Murray, J C 2015b *North Last Quarry, Peterculter. Archaeological Evaluation*. MAS 2015-36A. Unpublished report available in Aberdeen SMR.

Murray, H K & Murray, J C 2017 *North Last Quarry, Peterculter. Archaeological Evaluation*. MAS 2017-29. Unpublished report available in Aberdeen SMR.

Appendices

Appendix 1: Catalogue of digital photographs

Digital frame number	Content
North Lasts Quarry, Aberdeen, 2018	
001-004	Soil strip looking S from point A towards point B
005-006	Soil strip looking S from point C towards point D
007	General view of quarry