

Site/GLA/3/2

F Willy

Glastonbury 1955

Page 1

1955.

Trench 1 across centre 5/6th bay of south choir aisle. Section 41. Illustration 1642.

Section: west side drawn.

Topsoil [C:2350] depth of 3" along trench – slightly deeper towards wall (0'-2'6").

Walling [C:2363] projecting 2' from wall – to depth of 30" (at least).

Scaffolding trench [C:2367] from 2'-3'6" of redeposited clay – with a few larger stones (marked in section).

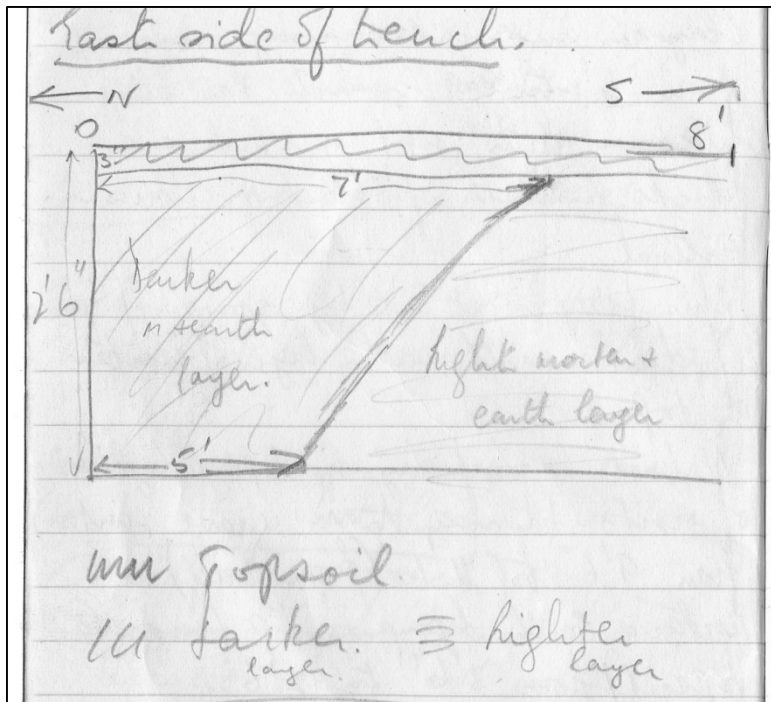
Natural clay [C:2365] then rises from trench floor in section to depth of 15" at 6'. Above clay is mass of earth and rubble [C:2366] – disturbed layer [C:2351] (19th century).

Page 2

Clay is cut into by depression [C:2359] from 6' to 9'9" which has been filled in with soil in which are specks & lumps of black & red material [C:2358]. This filling is cut into by grave [C:2357] – filling of dark earth [C:2356] with layer of mortar [C:2355] on top.

Natural level of clay is topped by 1"-2" of mortar [C:2362] (darker than grave mortar) from 9'6" to 11'10" (from wall). Mortar and earth lying on top (under topsoil) from 3'6" to 12'6".

At 12'6" – right down to 30" depth is mass of rubble filling [C:2352], with well defined edge [C:2353] at 12'6" (- stone robbers rubble).



Sketch of east side of trench.

Page 3

Trench 2 across 6th bay of south nave aisle. Section 21. Illustration 1644.

Piece of painted plaster 2" down in east side of trench (- in envelope).

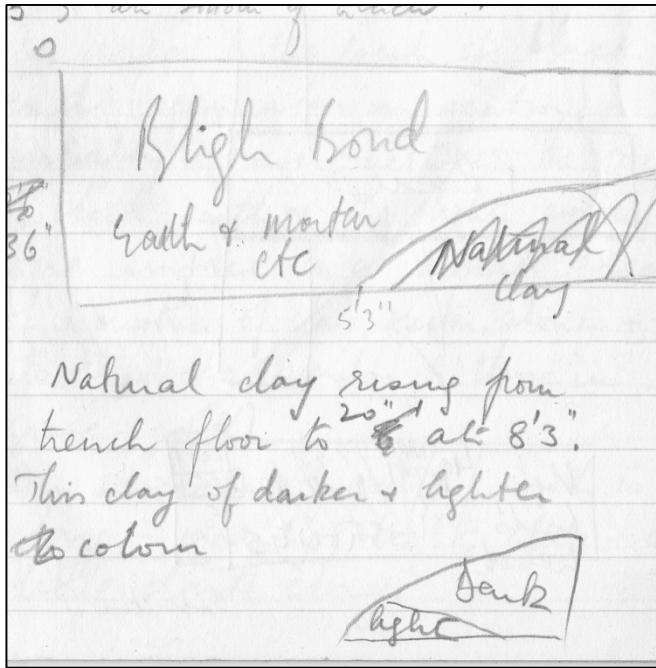
Page 4

Eastern extension of trench across 6 bay of south choir aisle. Section 40 & 43. Illustration 1642.

Section drawn - 0' to east

- 16' to west

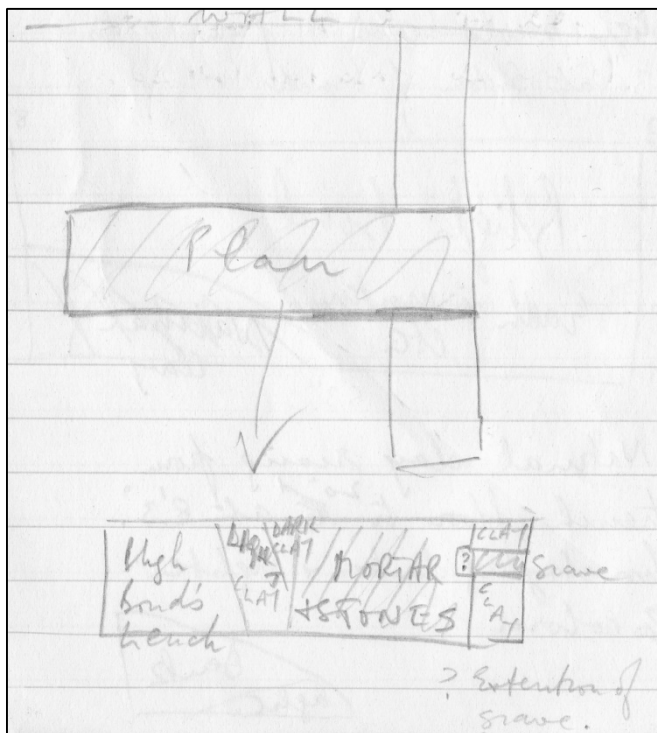
- Depth c. 36"



Bond trench (?) from 0' to 5'3" at bottom of trench.

Natural clay [C:2505] rising from trench floor to 20" at 8'3". This clay of darker and lighter colour.

From 8'3" to 16" – right down to 36" – mortar & stones mixed [C:2503] – robber trench [C:2504] (for wall).



Plan of E extension of trench across centre of 6 bays (S choir aisle).

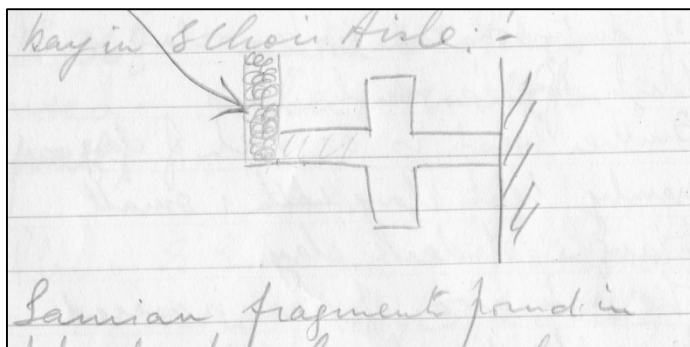
Page 5

At east of trench floor is an area of disturbed earth mortar & clay [C:2501] - ? Bligh Bond's trench?

Further west is a patch of clay – mainly light clay with a small triangle of dark clay [C:2505]. The main area of plan is covered by robber trench of wall [C:2504] & [2503] – now filled with stones and mortar remains. An area to the west of black earth (seen also in section) (in section 39) is probably a grave; between the foot of black earth [C:2356] and the light mortar/ stone surface [C:2355] is a small area of a mixture of clay, mortar, stones & black specks (similar to those in grave earth).

On each side of grave – earth is clay- mainly light clay – a little dark clay.

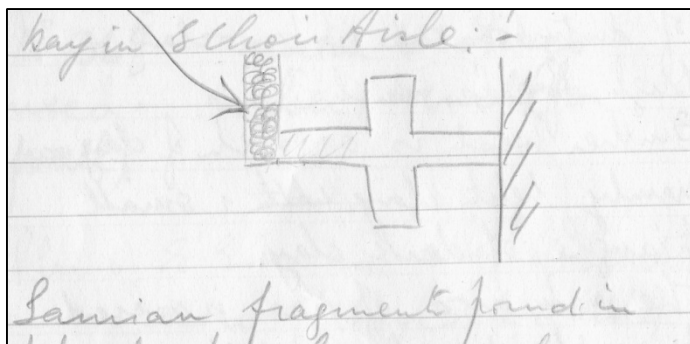
Trench at 90 degree to trench to trench from 2nd bay in south choir aisle.



Trench at 90 degree to trench from 2nd bay in S choir aisle.

Samian fragment found in black clay layer under layer of natural clay (deposited) (tentatively identified as [F:BF2504]).

Back page



Nave south aisle. Illustration 1644.

Rough

