

Site/GLA/3/3

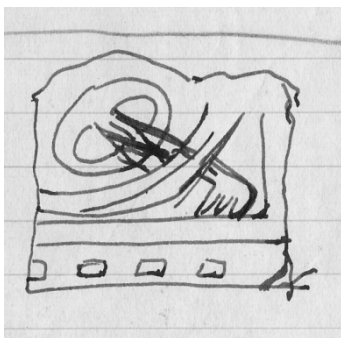
Dexter

Glastonbury 1954, 55 & 56

Page 1 back

1954.

A232. Fragment of Saxon cross shaft Ham stone. Corner of plain panel, bordered on 1 side by rope border, on other side by plain border. Sculptured face: a long rope-banded face – 10" along plain banded face 7 ½ " max. Thickness 7 ½ ".



Page 2

Photo 32 A229 of A23.

Fragment of Saxon cross shaft medium-course Doultling stone Length 7 ½" (across design), width 4 ¾" depth max, 4 ½" max width, 5 ¾" design – fragment of interlace with 3-pronged claw or wing bordered by straight vertical band, with beaded moulding (?) on edge, back tinged rose by burning.

A230 (3 pieces joined)

Piece of Saxon, Doultling, repaired shows effect of burning – reddish on reverse side - claw & interlacing with beaded outer border. Sculptured face – height 7" with 6 ½" depth 4 ½ .

Back of Page 2

A228. Fragment of Saxon cross-shaft medium course Doultling stone face of design – ht 5 ½ " , width 4 ¾ " , max, width 5, max ht 7" , max depth 4 ¼" . Fragment of interlace with vertical band border. Back surface smoothed off – tinged rose by burning.

A222. Fragment of Saxon cross-shaft repaired, medium course Doultling stone sculptured face. Length 7 ¾" , width on diagonal 2 ½" . Max length 7 ¾, max width 2 ¾, max depth 5 ½" . Interlace pattern on narrow face.

Page 3

A226. (photo = 11 right). Small fragment of Saxon cross medium-course Douling stone sculptured face: max ht 6", max depth 3". Max measurements 6 1/4" x 4" x 2 1/4". Fragment of interlace.

A223. Photo 28. Douling stone – fragment of Saxon sculpture border of squares each containing fret pattern corner of enclosed plain surface sculptured face 6" x 7". Max ht 7", max width 6", depth max 3 3/8".

Back of Page 3

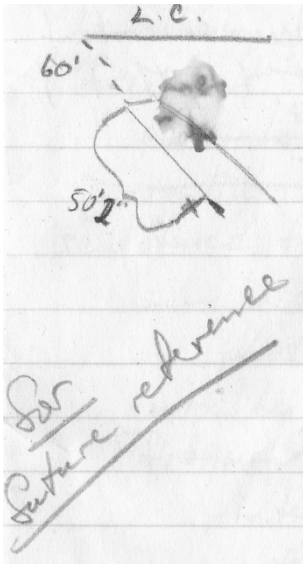
A221. photo = 11 (left).

Small fragment of Saxon sculpture medium course Douling stone sculptured face – 4 1/4 " x 4", 4 1/4" thickness. Fragment of interlace back tinged rose by burning.

A145. Small fragment of Romanesque sculpture medium coarse blue lias corner fragment of border with ball ornament between 2 raised bands. Sculptured face – 3 1/4" x 2 1/2", max depth 1 3/4"...

Page 4

Trench south of Lady Chapel. Section 29



Sketch of human remains in trench S of Lady Chapel.

Back of Page 4

...along half of circumferential face of fragment, (depth 7") scale pattern.

Page 5

Photo 2 & 31. Abbot's kitchen. Douling stone. Fragment of end Saxon side cross-arm. Sculptured face, photo 2, max width of base (as in photo) 10 1/2", max height as in photo 7 3/4". Fragment of circular interlace or rosette pattern (much worn). Sculptured face, photo 31, max width as in photo 9 1/4", max height as in photo 11", upper half of skeleton within circle deeply hollowed eyes. Diameter of circle 7 1/4", max depth of fragment 7".

Back of Page 5

A227. Photo 26 (Abbot's kitchen). Douling stone medium-coarse. Fragment of Saxon cross-shaft burnt rose on back. Sculptured face. Width 7 1/2", height 12", max width 10", max height 13", max depth 6". Fragment of dragon interlace.

Page 6

A224. (Abbot's kitchen). Photo 3. Fragment of Saxon cross arm. Douling stone. Burnt rose on back. Sculptured face. height 6", width 10 3/4" = placed as on photo. Thickness 5". Fragment of circular pattern with incised centre spine.

Back of Page 6

A225. Photo 6 (Abbot's kitchen). Douling stone. Fragment of Saxon cross-shaft part of back tinged rose by burning. Sculptured face. Width 4 1/4", height 8 1/2", thickness 5 1/2". Double rope vertical bands bordering fragment of interlace with incised central spine.

Page 8

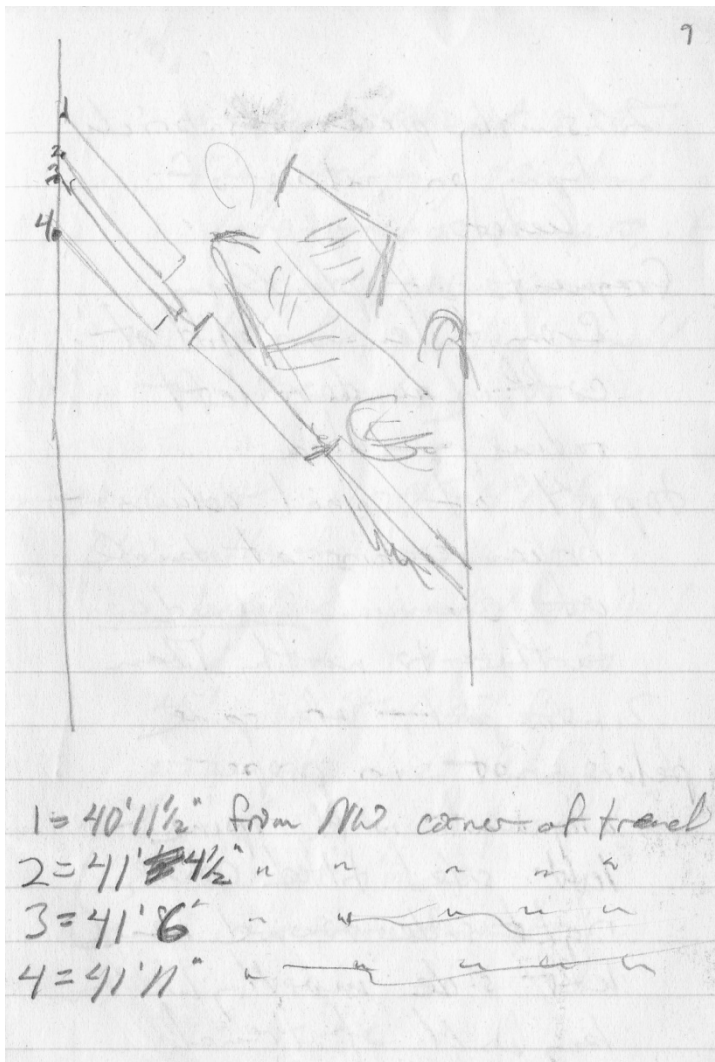
Trench south of Lady Chapel skeleton 41' from NW end of trench (101' from wall of Lady Chapel). Cranial cavity of skull 41' from NW end of trench in east wall. Top of cranial cavity 34 1/2" depth, bottom of cavity 39 1/2". Ashy layer underlying skull. NW corner of cist wall south of skeleton 40'10" from NW end of trench (at 6" in from edge of trench). Base of skull & end of spine on line between 41' pegs on either...

Back of Page 8

...side, 22" east from western peg angle of left clavicle to scapula 27" from western peg.
 (measurements given eastward from 41' peg on western edge of trench eastward on metal tapes stretched to 41' peg on eastern edge of trench).

Eastern intersection of stones 1 & 2 17 1/2" from 41W eastward.

Page 9



Sketch of skeleton in trench S of Lady Chapel.

1= 40'11 1/2" from NW corner of trench

2= 41'4 1/2" from NW corner of trench

3= 41'6" " " " " "

4= 41'11" " " " " "

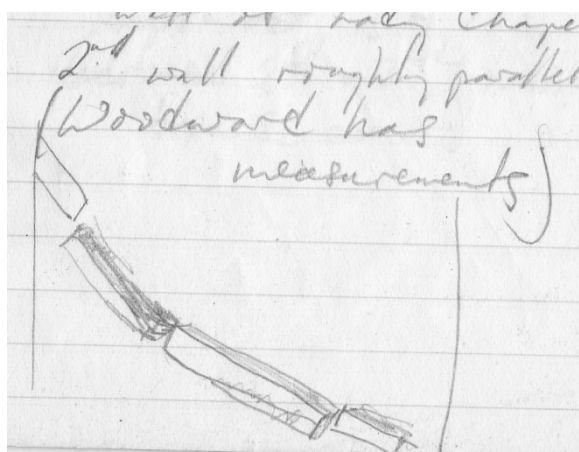
Back of Page 9

2 small pieces of brick lying on pelvis of skeleton. Fragments of planking from fallen-in lid of coffin under left radius - ulna. Top 4" of spinal column & broken remains of back of cranium inclined further to north than main part of spine. Pelvis not in proper alignment with spine – left side tilted down, Right side toward head. Left side mostly hidden by wall of trench. Pelvis not intact – ilium & femur lying outward, ...

Page 10

...next to stone of cist (if they belong to same skeleton – his femurs, if in proper position, would be under wall of trench).

Second cist wall 45-47' from NW wall of trench new baseline parallel to NW end of trench & 45' from it (105' from S wall of Lady Chapel). 2nd wall roughly parallel to 1st. Woodward has measurements.



Sketch of skeletal remains in trench S of Lady Chapel.

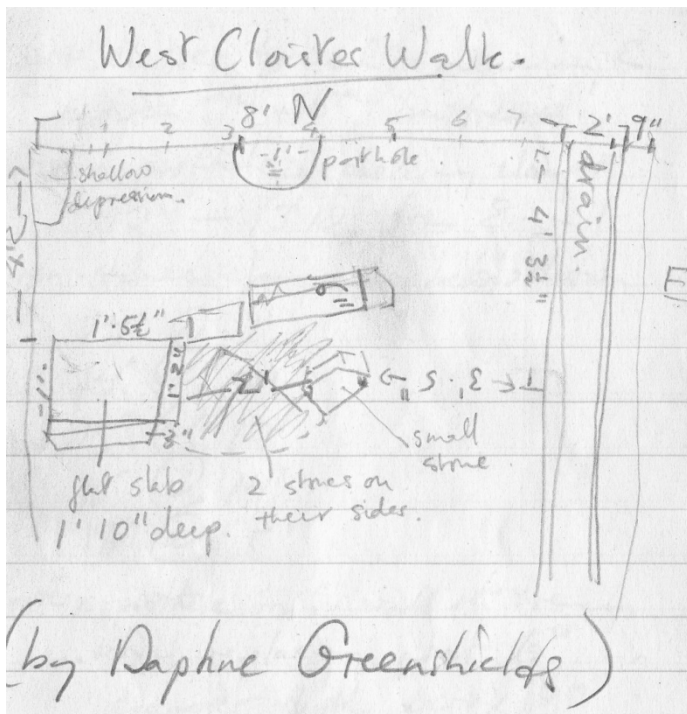
Back of Page 10

Small piece Saxon painted plaster found in NE wall of trench south of Lady chapel at distance of 85'4" from wall of Lady Chapel, depth of 4'4" [F:BF1452].

Page 11

Trench in east range of Saxon monastery. Section 9 (east of west cloister walk) fragments of 12th century? cooking pot found in mortar layer beneath mortar mixing floor. Found throughout width of trench 18'6" from east end of trench at depth of 3'4" (between 2nd & 3rd buttresses from SE corner) (most likely [F:BF1153]).

West cloister walk.



Sketch of slabs, stones and post-hole in west cloister walk trench.

West cloister trench – running E between 5th & 6th buttresses western post-hole packing clay – 12' – 13'10" from E wall iron-stained clay – below datum:

14" @ 11'

14" @ 12'

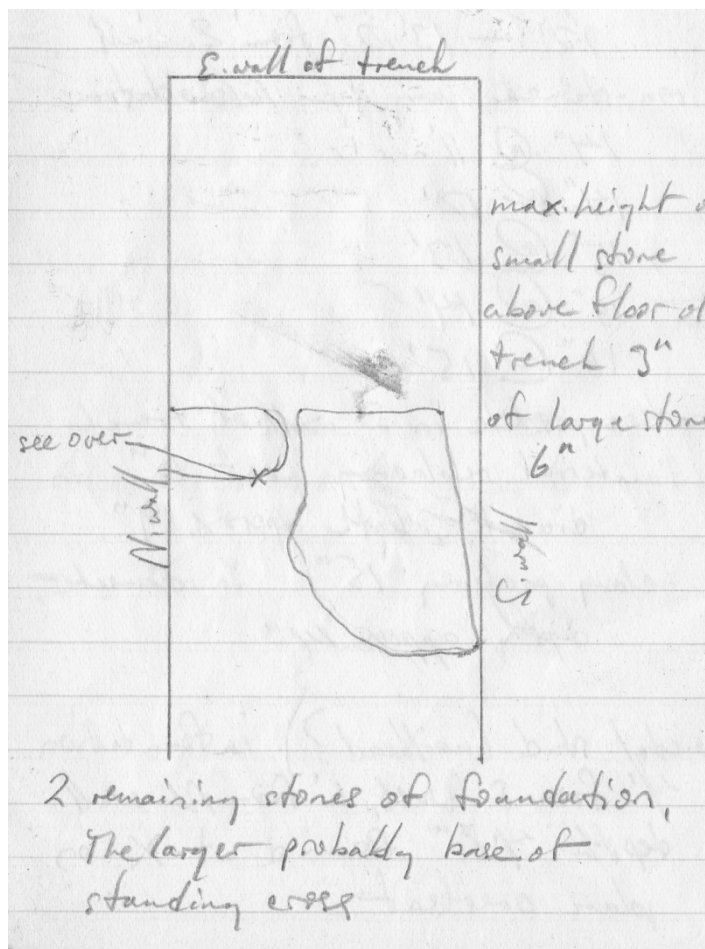
15" @ 13'

16" @ 14'

16" @ 15'

Eastern post-hole in S wall of trench material replacing post 6" in diameter depth approx 9" clay packing 15" in diameter depth approx 14".

Metal stud (nail head?) in foundation 4' from E wall, 1' from N wall depth 4'8" found at x on plan overleaf.



Foundation in W cloister trench between 5th & 6th buttresses. Scale 1" = 2'.

Max height of small stone above floor of trench 3" of large stone 6".

2 remaining stones of foundation. The larger probably base of standing cross.

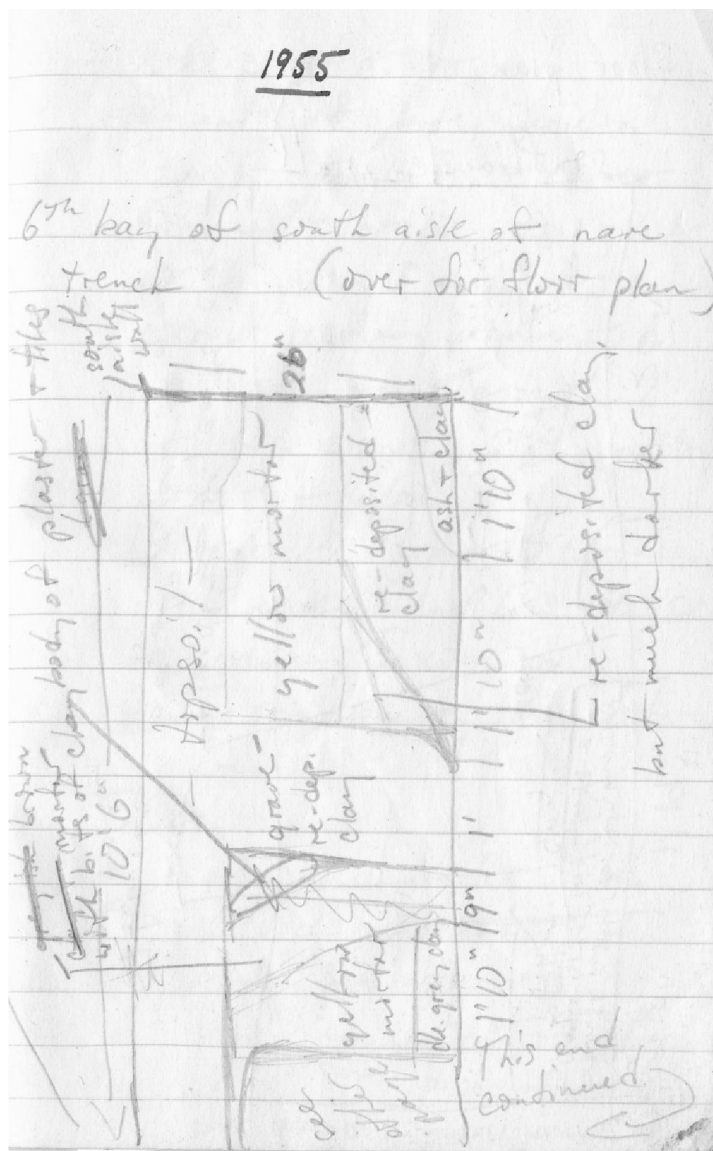
Page 14

Ditto trench – fragment of dark age pottery found in iron-stained clay in S wall of trench depth 2'8" just E of E edge of clay packing of western post-hole (identified as [F:BF1402]).

Page 15

1955

6th bay of south aisle of nave trench. Section 21 (see over for floor plan).



Sketch showing section of 6th bay of south aisle of nave trench.

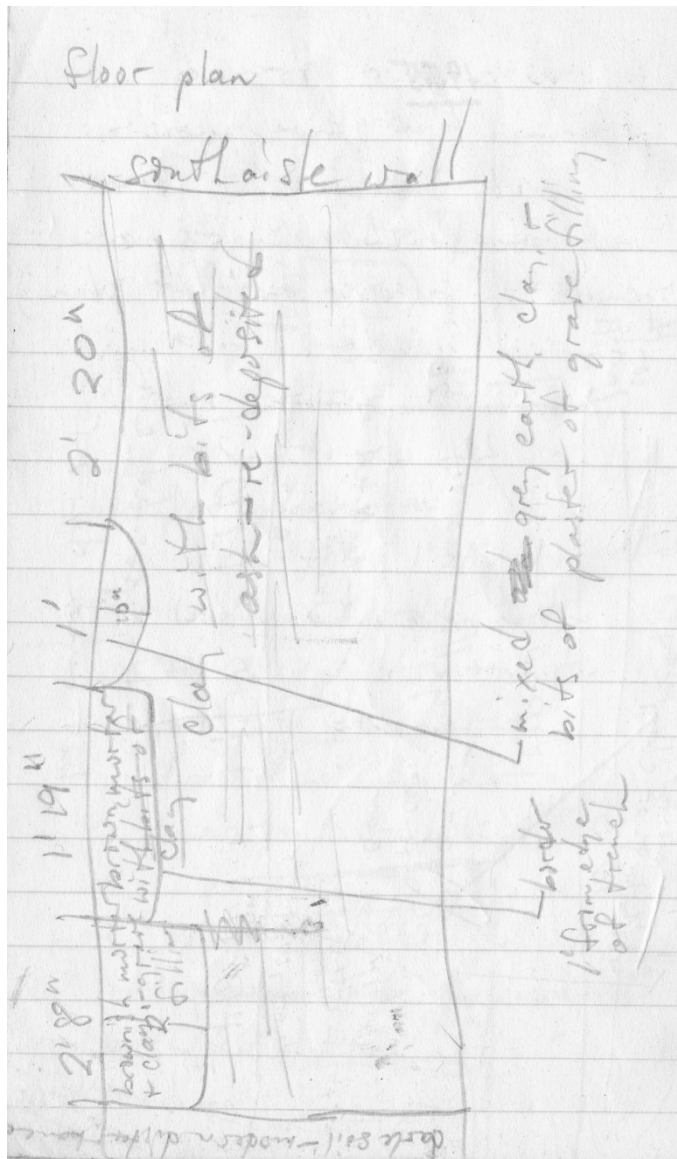
Back of Page 14

Continuation of:

Topsoil above 2 adjacent layers of dark soil – modern disturbance, and brownish mortar & clay – grave filling (see sketch).

Body of plaster – depth 9" to 1'4" contained broken bits of tile, plaster & bits of tile, plaster and bits of painted plaster (paint both pink & maroon on white).

More painted plaster in filling of grave nearer aisle wall depth 22" – 26".



Floor plan of 6th bay of south aisle of nave trench.

Long E-W cloister trench. Section 37. Fragment of late medieval window mullion & small fragments of window glass 102'6" from E end of trench corner resting against N wall of trench. Depth 2' at top corner, 2'4" bottom corner & glass. W edge 14" from W surface of 2 base blue lias blocks of probably Saxon wall lying on clay – not mortared to wall.

Black bead found under 3rd blue lias block resting on 2 base blocks (see above) (very tentatively identified as [F:SF2001]. 102'9" from E end 6" from N wall depth 2'4" small piece of window glass found 2" underneath bead.

Back of Page 16

West cloister walk trench 2 areas of break in plaster bedding for robbed Norman pavement. 1-6'3" from inner W edge of drain, extending from S edge of trench N 4' (E edge of disturbance 6'3" from inner W edge of drain).

2-9'10" – 11'6" from S edge of trench, 2'-4' from inner W edge of drain.

Page 17

E-W cloister trench. Section 37. 30' from E end, 3' from N wall, depth 2'6". Fragment of pot – 12thC or earlier – found in fragment of wall (very tentatively linked to [F:BF3045] & [F:BF3046]).

Pot fragments – 54' from E end, 2'4" from N wall to depth 2'8" in clay layer. Same area but in remains of wall – fragments of slate (very tentatively linked to [F:BF3042]).

Back of Page 17

E-W cloister trench pot fragments 52'6" from E end, 1'8" from S edge, depth 2'6" in light clay layer.

Pot fragments 53'6" from E end, 1' from S edge, depth 2'2" in layer of dark clay and shale fragments.

Pot fragment 52' from E end, 2' from S edge, depth of 2'4" in clay layer.

Pot fragments C13th. 75'6 from E end, 3'8 from S edge, depth 3'8" in large paving.

Page 18

E-W cloister trench. 13thC pot bits at 76'4" from E end, 1' from S edge, depth 3'8" in large pavings as bottom of previous page also 2'6" from S edge.

Fragments of Saxon painted plaster 73'6" from E end, 2'4" from S wall, depth 4'6" (tentatively identified as [F:BF2008]). In mixed clay, soil & ash. Larger fragment – 74' from E end, 2' from S edge, depth 4'6" in same layer as above (also tentatively identified as [F:BF2008]).

Back of Page 18

East of west cloister trench pot fragment (late Saxon –early 12thC?) 6'2" from S wall. 8'8 ½ from inner W edge of drain. Depth 3'6".

Page 19

1956

North transept trench, north. Section 54.

Numerous large fragments of medieval tile found in topsoil level, depth 4"-6", 22' from E chapel wall.

Small fragment of gilded & painted stone (probably from tomb) in filling of 13thC sleeper wall, 27'6" from E chapel wall, depth 2' (identified as [F:AF3501]).

Fragments of tile under 13thC sleeper wall, 8'6" from E chapel wall depth 14"-16".

Trench CL2. Datum line for section 14 1/2" above blue lias block (x) facing Norman wall at E end of trench – block in W face next leaning block in extension no. 1.

Back of Page 19

Fragment of green-glazed pot in body of ash and charcoal on natural clay E of Norman wall.

Fragment of moulding, fragment of tile & frags of brick and vitrified material in Extn 1, 5'10"-6'2" from S trench wall, 12"-20" E of N extension wall, depth 25"-27", moulding in light grey clay, others in dark grey clay & ash.

Extension 1 – pot fragment 7' from S wall of trench, 20" from W wall of extension depth 28", in layer of black clay & ash E of blue lias blocks.

Page 20

Trench CL3. Section 52

Pot fragment & spout (late – green glazed) 47' from N end, depth 8", just under topsoil.

Fragment of carved Douling stone 27' from N end, 3'6" from E wall, depth 20", on top of spill layer [F:AF3200].

Large fragment of iron slag 2'8" from N end, 2'6" W of E wall depth 4'.

Pot fragment (12thC?) 19'6" from N and 2'6" from E wall depth 2'6" amid blue lias blocks.

Trench CL1

Extension 2 cut 3' into baulk from 8' to 20'.

Pot fragment 30'6" from E end, 3'6" from north wall, depth 2'1" in stiff dark clay.

Back of Page 20

CL1. Sections 49 & 51

Pot fragment – 31' from E end, 3" from N wall, depth 2'.

Pot fragment – 19' from E end, 2'6" from S wall, depth 25" in clay & stones below yellow mortar.

Pot fragment – 17'6" from E end, 4" from S wall, depth 28" in dark clay mixed with charcoal.

Pot fragments – 18-19' from E end, depth 26" in grey clay & charcoal.

Fragments of kiln wall – 17'6" from E wall in N wall of trench (edge of extension), depth 2' – in grey clay & charcoal.

Ext 2 pot fragments 19' from E end, 7' from S wall, depth 2'.

Page 21

Trench CL1 ext 2

Fragment 13thC (late) or 14thC glazed on 1 side 8'6" from E end 4'6" from S wall, depth 2', on edge of disturbance.

Trench Cl 1.

No pot found in body of charcoal 10'-12' from E end, depth 2'-3'.

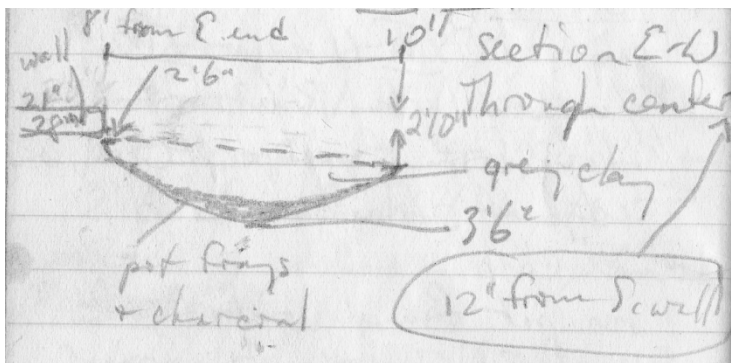
Trench Cl 1 ext 2.

18' from E end, depth 4'2" tile fragments in top of mortar level.

18' from E end, depth 4', in top of mortar level pot frags – late Saxon and RB 1 1/2'-3', from E end of extension, depth 2'6" in grey clay.

Back of Page 21

Trench CL1. Sections 49 & 51



CL1 ash pit. South face.

Top half of ash pit grey clay, bottom half charcoal & small pot frags top of E end of ash pit approx 3" below bottom of mortar of wall.

Dotted line approx top of pit, as above it edge of pit was only irregularly visible, & duly chopped through by Dr Harden.

Page 22

