

GLA/SITE/3/18

Kate Woodward

1962

Page 1

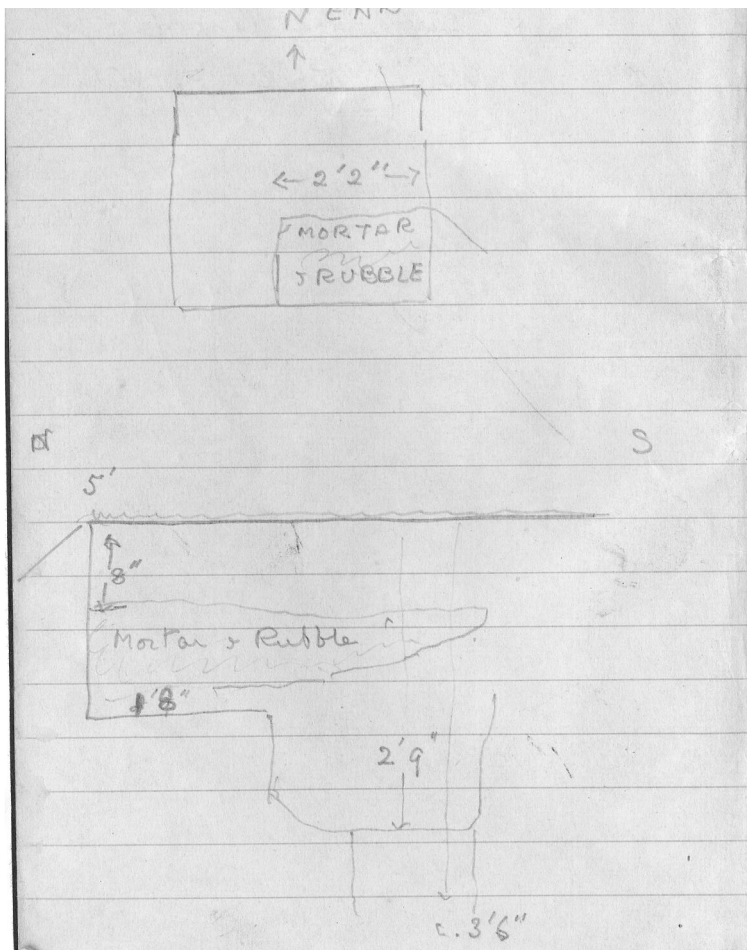
Measurements N-S (end 1)

*W-E

*when not feasible noted that E-W taken

Page 1 back

Trench started 5' from L Chapel with West face centred near Jesu-Maria stone. All measurements from N include this 5'.



Sketches of N end of trench.

Page 2

Trench 1 S of Lady Chapel. Sections 72 & 73

Marked out – Aug 7th

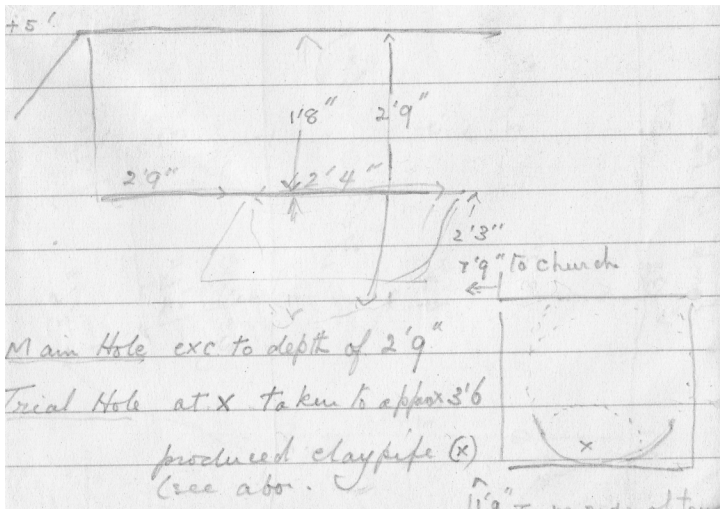
24' in first layer of earth and rubble (6' to 8") carved stone.

Scaffold hole – Aug 9-10

From 8'(S) to 2' (centre of trench) [C:5918] some nails and fragment of clay pipe [F:BF5919], [F:SF5903] & [F:SF5904].

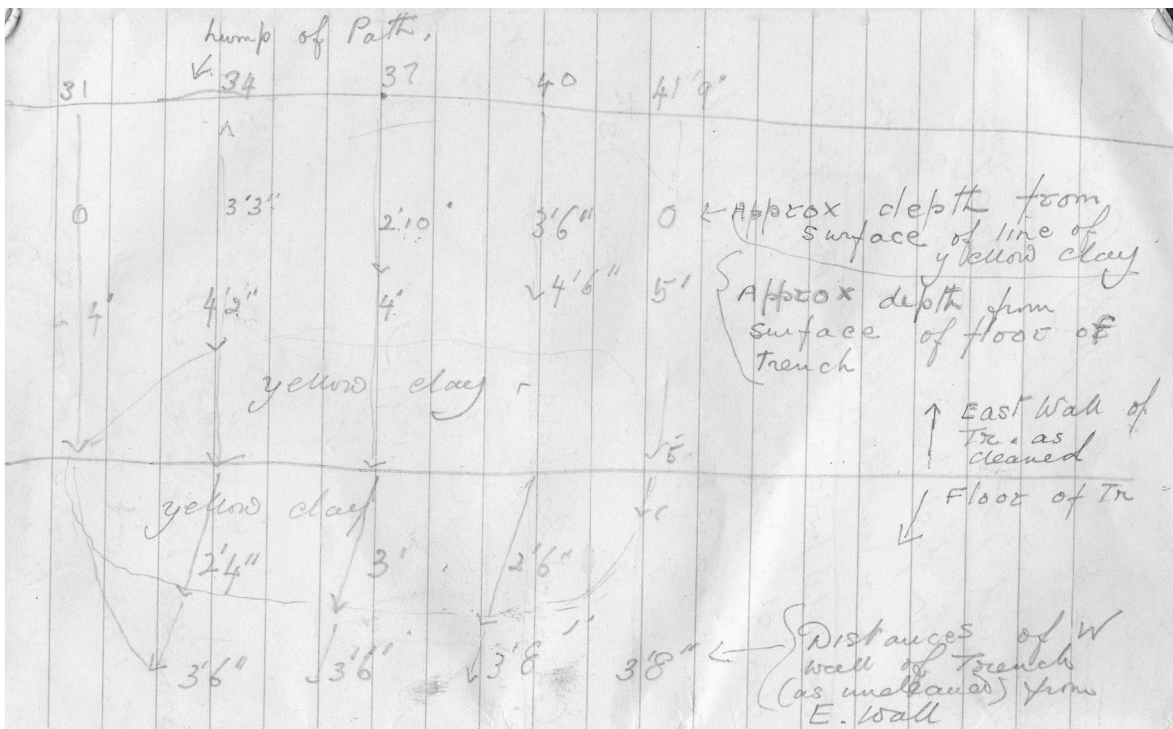
Aug 13th

Continued scaffold hole.



Sketch of scaffold-hole.

Page 2 back



Measurements of section.

Page 3

Aug 16th

Floor and walls

Pottery [F:BF5904] from North 30'

depth 3'10"

from E of trench 6"

Investigated yellow re-deposited clay in wall and floor of trench. Notes made as opposite (PID18781) in case too wet to plan later.

Page 3 back

(Men digging) means turned up by pick or spade and not surely placed from sides of trench – depth only as in the layer being removed.

Page 4

Aug 17th

Drew plan of trench. 31' from N to 41'9". Men went down further 9".

At 31' in W (disturbance) side layer piece post-medieval pot (not kept).

At 36' small piece of pot (ENV) (men digging).

At 39'6" in layer of stones etc. post ref. pot against W wall of trench (by trowel) (ENV).

About 30' (before yellow clay begins) [C:5904] in W half white china marmalade pot (men digging).

Page 5

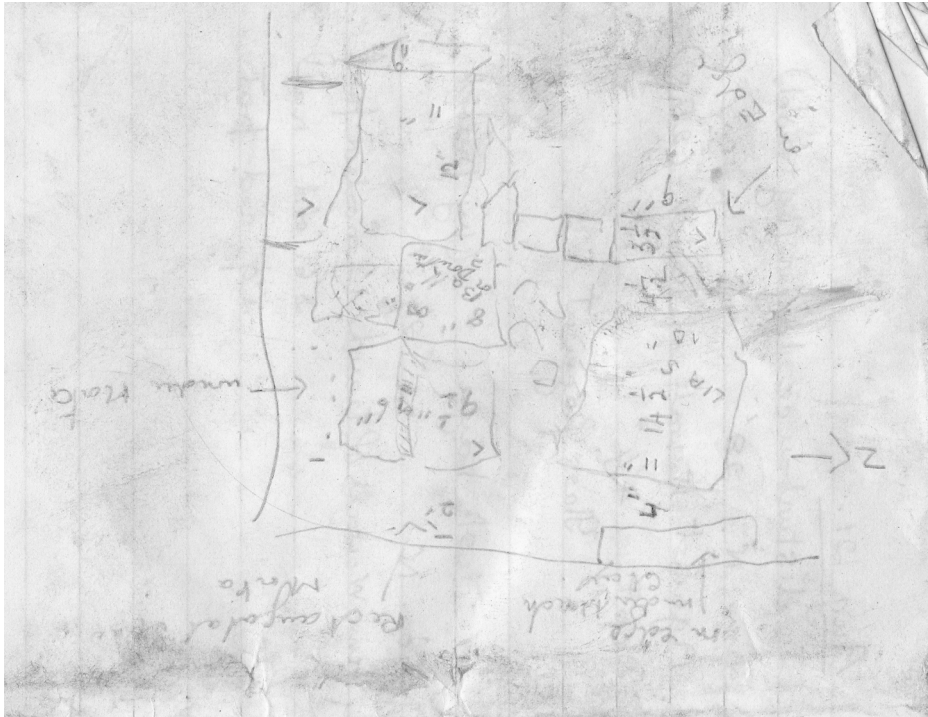
Aug 21

In disturbance layer (by trowel) from N 28'.

Against W wall of trench 2" – 3", depth 4'4" glass fragment.

In disturbance layer (by trowel) from N, 29'3". From W wall of trench, 1' modern pot, 2'6" old nail, 2'9 red pot.

Page 5 back



Sketch plan of slabs and mortar under clay.

Page 6

Aug 23rd

Cleaning ... 1 ext

Under burial (coffin .. nails, pot).

From N 4'6", W 4'6".

Cleaning Tr 1 ext under burial – pot

from N 7'2"

W 3' 10"

From N 5'6"

W 6"

On red and yellow mixed floor/wall depth 4'9".