

GLA/SITE/3/21

Kate Woodward

1959, 1963 & 1964

Page 1

In trench – D5 see 1956 Notebook with Mrs Rendall.

Page 2

6th August 1964

S 3'4" – S 5'10"

Line of clay – disturbance trench at 2' from turf level with loose fill above.

Aug 7th – on clay depth from N turf line.

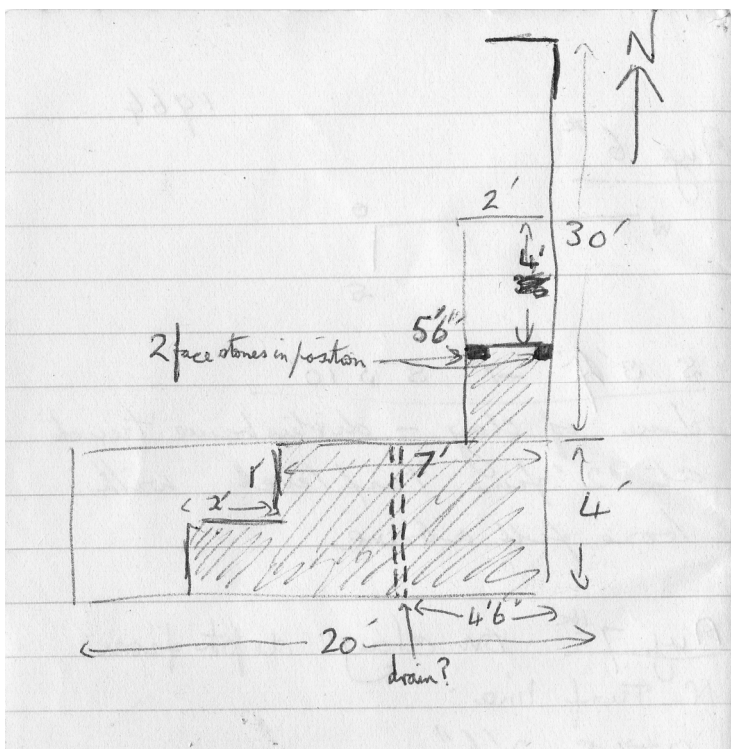
O-S 2'6"

O-W 3'8", glazed pot

Other work in Rendell and Holdens books.

NB. 14th century Abbots latrine.

Page 2 back



Sketch plan of latrine turret in SE corner of Abbot's Hall.

Diagonal shading: foundation of wall of latrine turret. Top of foundation 3'2" below turf level at E end of trench.

*Page 4*

1959

See also Mr & Mrs Temple and Mrs Ainsley and Miss Rendell.

CLS . Section 62

From concrete marking S of cloister walk to 44' North.

Main Features S-N

Exc. depth (from turf) 4'3. Wall 12th century frater [C:5621], extent about 3' from S.

Exc. depth (from turf) 4' 8". from 3' – 10' paving 12th century cloister [C:5620].

Exc. depth (from turf) 4', from 10'- 12'6" Wall (inner) cloister [C:5622]

Various 4'3 - 2', 12'6"-15' clay [C:5611]

Exc. depth (from turf) 1'8 set stones at 15' beginning of 12th century lav.

5.2.Exc. depth (from turf) 2' Large stones [C:5619] and mortar [C:5613] to 24'.

2'9" to 3'9" rising at 24' to 2' by steps at 30'6" probable end &

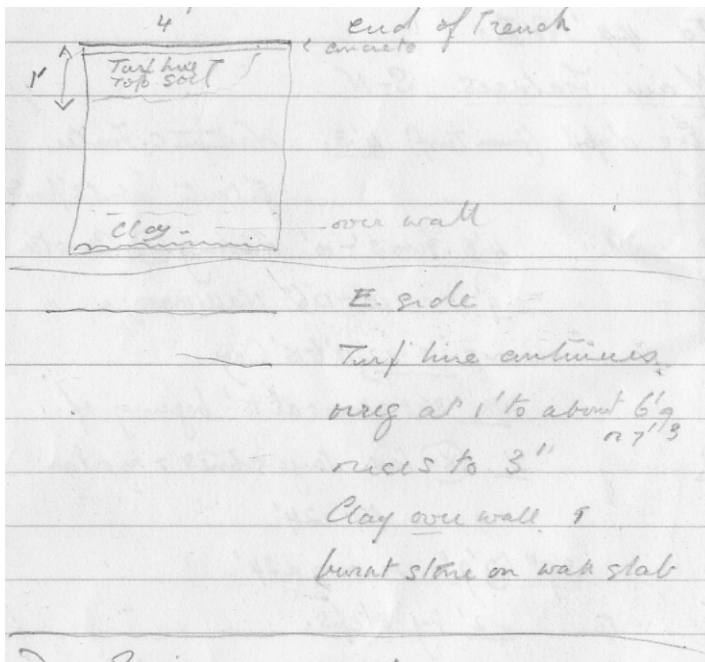
5.3. beginning of basin about 40' very large fallen stones [C:5615].

End of trench diagonal across NW corner later drain [C:5616].

*Page 4 back*

Further notes:

1) Some T.B's some lias piece possibly giving curve of arch taken to G.H and labelled. End of trench.



Sketch of section at N end of trench.

E. side. Turf line continues. ? at 1' to around 6'9 or 7'3, rises to 3'. Clay over wall. 1 burnt stone on wall slab.

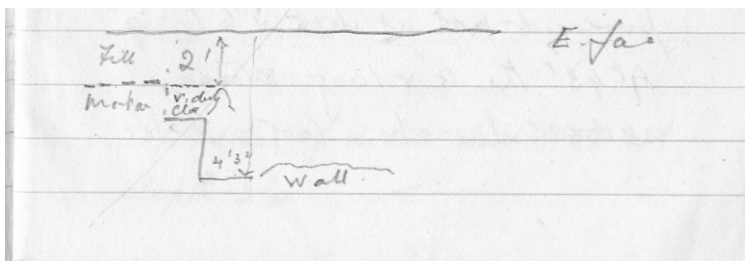
2) paving irregular lias between paving and wall 3. Signs of burning or decayed wood. In W face re-deposited clay over wall.

Page 5

3) wall approx 3' wide – shows 1 very large stone across west side of trench going under face over 1' deep and 2' length (or width) perfectly flat.

On other side nails and signs of burning ? door posts, mortar over smaller stones of wall red brown (damp). In E face of trench robber trench scoop centres on wall.

4) about 1' North of wall [C:5622] step left in excavation to protect edge of lavatory [C:5616]. Above step very dirty and full of bones from 2' to 2'8", as excavated.

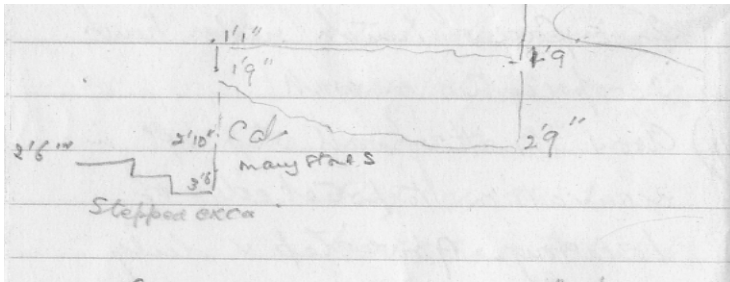


East face of section.

Page 5 back

5) Lavatory. 1st wall stone probably extended 18" to 2'4 1/2".

5.2) Straight cut in both E and W faces at 19'6" depth 1'9" to 2'9", and 24' depth 1'1" to 1'9". Then white mortar becomes mixed with clay but line continues as yellow mortar from 2'10" to 3'6".



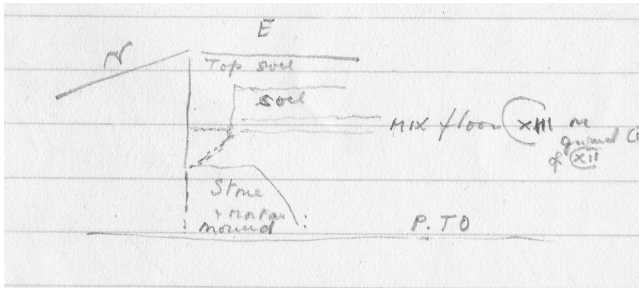
Sketch of E side of section.

5.3) Clay and dirty stony earth floor under mortar mixing floor [C:5608] to end produced pot at depth 2'6" to 2'9" [F:BF5606]. At 43' the 3 v. large stones [C:5615] across trench (not in position)...

Page 6

...protrude above yellow clay but below mortar mixing floor [C:5608].

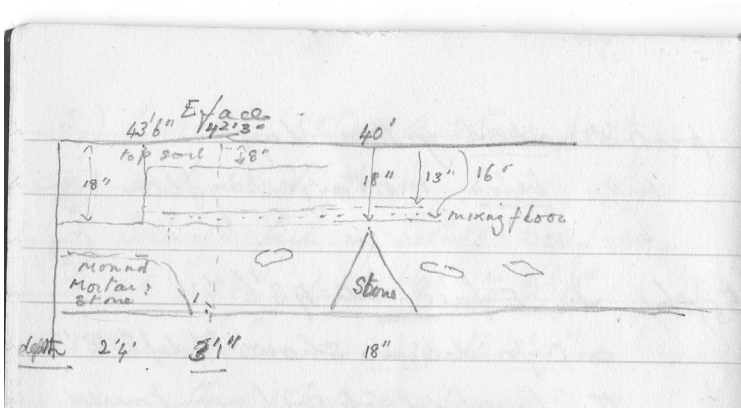
5.3 & 6) in E face at 43'6" cut for drain [C:5605] shows to depth 18". This layer of topsoil continues across end of trench at that depth and in W face to 41'5" where drain wall (SE) disappears in W face. Mortar floor [C:5608] ends with cuts [C:5605] in E and W faces and also yellow clay.



Sketch of E section at E end of trench.

Top stone of drain wall (SE) [C:5616] at depth 2'.

Page 6 back



Sketch of E section at E end of trench.

*Page 8*

7th August 1963

St Michaels Chapel

On evidence of combined section tracing width c.4' from E end is 21'. (NB) point found from plotting on plan – 45'4" east of 1963 nailing possibly 1'8" from foot of slope.

Trench E. ext II – Abbots Hall. Section 75

Pottery found under large stones (mortared together) in charcoal layer. Give dating only of 'Throwing in of stone'.

8th. Measurements with Mr R-R established centre of Abbot's Hall. 1'6" from S Wall of trench.

E.Ext III. Section 77

8th. Work on clearing plaster floor [C:7060]. J Warner found plaster with number and one with stripe.

*Page 9*

9th August

Glass on mortar floor [F:SF7052]. Depth 3' from W 3' in S wall.

Pottery - glazed one side gr/yellow with pattern. Depth 2'9" from W 7'.

Pottery - glazed. From W 9'. Depth 3'9". From S 9".

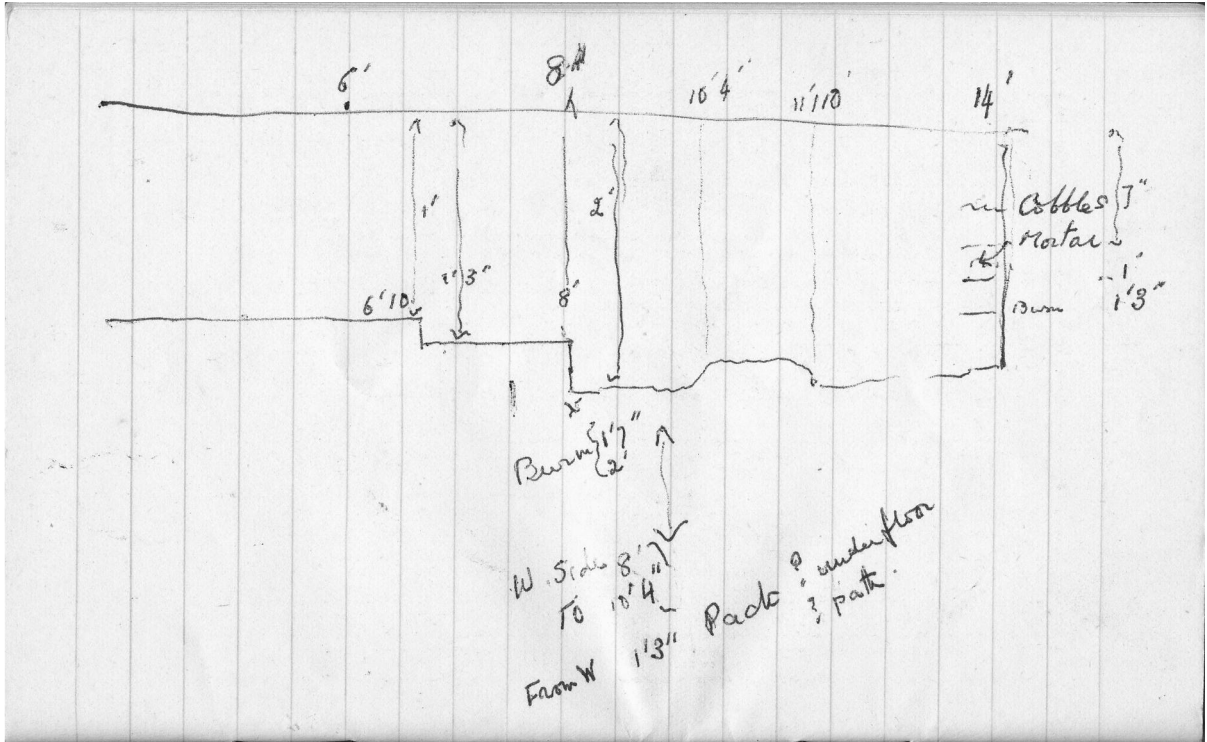
(Both XI or XII centuries).

13th Aug.

E. Ext III from 15

Worked from approx. 10' to 6'. Floor very irregular. At depth 46" in soft earth and/or mortar with burning (char) and bones on hard layer. Pottery, glass, tile etc.

*Back page*



Sketch of AHCT Ext 3.