

GLA/SITE/3/34

L Witherell

Glastonbury 1954

Page 1

Photo's – page by self.

110,111 Saxon?

A224

228

A225

229

A227

230

A231-234 (-232)

226

A251 ? Saxon?

223

A270 ? Saxon?

223

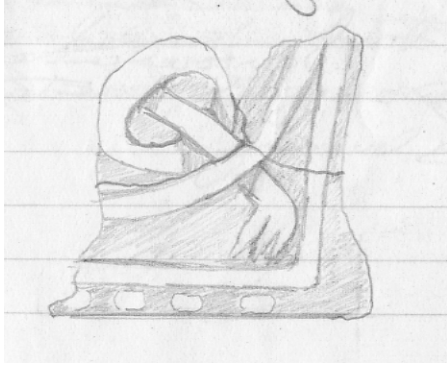
222

Page 2

A230

Piece of Saxon sculpture. Medium course Doulling stone. Sculpt face 4ft 7ins. Width 6 ½ ins. Depth 4 ½ ins.

3 pieces of joined interlace and claw. Tinged red by burning on reverse side. Beaded outer edge.



Sketch of Saxon sculpture A230.

Page 2 back

Unmarked

32 (photo #) A229 (Cf. A230).

Fragment of Saxon cross shaft. Medium coarse Douling stone 4ft. Height up face of design – 7½ ins. Max width across face of design – 4 ¾ ins. Max width – 5 ¾ ins. Max depth 4 ½ ins.

Fragment of interlace with claw bordered by vertical straight band beaded on outer edge. Grooved centre shaft. Reverse tinged rose by burning.

Page 3

A228

Fragments of Saxon cross shaft.

Medium coarse Douling stone. Max height of design face – 5 ½ ins

Max width across design – 4 ¾ ins

Max width -5 ins

Max ht – 7 ins

Max depth – 4 ¼ ins

Fragments of interlace. Bordered by vertical band. Grooved central strand. Back surface smooth. Tinged rose by burning.

Page 3 back

Photo #11, right

A226

Small fragments of Saxon cross. Medium coarse Douling stone sculptured face. 6 ins x 3 ins.

Max measurements $6\frac{1}{4} \times 4 \times 2\frac{1}{4}$ ins. Flat. Interlace design.

With one flat ribbon, edges marked by grooves, and two central grooved strands. Ornament largest flatter than A229 and A221 and A223.

Page 4

Photo #11, left

A221

Small fragments of Saxon sculpture. Medium coarse Douling stone sculptured face. $4\frac{1}{4} \times 4$ ins

Thickness $4\frac{1}{4}$ ins. Interlace design – back tinged rose by burning.

A145

Small fragments of Romanesque sculpture. Coarse lias.

Sculpt face $3\frac{1}{4} \times 2\frac{1}{2}$ ins

Max depth $1\frac{3}{4}$. Fragments of corner border with ball ornament between raised bands.

Page 4 back

Photo #28

A223

Saxon fragment of sculpture. Douling stone. Longest sculpture face 6".

Sculptured face width 7 ins, max depth $3\frac{3}{8}$ ins. Border of squares containing geometric leaf pattern (or fret) area within it < plain.

Worn carving of some type on side. Finer carving than another example.

A222

A fragment of Saxon cross shaft – repaired. Medium coarse Douling stone, sculpt face:

Length $7\frac{3}{4}$ inches

Width (on diagonal) $2\frac{1}{2}$ inches

Max length $7\frac{3}{4}$ ins

Max width $2\frac{3}{4}$ ins

Max depth $5\frac{1}{2}$ ins

Bias slice of interlace pattern.

Page 5

Photos #2, 31

Abbots kitchen, loose. Saxon fragments of side arm of cross. Doultling stone.

Sculptured face, photo #2. max width of base (as in photo) 10 ½ ins. Max ht, as in photos, 7 ¾ ins.
Fragment of circular interlaced rosette pattern, much worn.

Sculptured face photo #31.

Max width, as in photo, 9 ¼ ins.

Max ht, as in photo 11ins

Upper half of skeleton within circle deeply hollowed eyes (diameter of circle 7 ¼ ins)

Max depth overall, 7 ins

Page 5 back

Along c. 1/3 of the circumferential face (depth 7 inch) scale pattern.

A227

Abbots kitchen photo #26

Fragment of Saxon cross, shaft of Doultling stone, burned pink on back.

Sculptured face

Max width 7 ½ inches

Max ht 12 inches

Max ht 13 ins

Max width 10 ins

Max depth 6 ins

Dragon interlace

Page 6

A224 Photo #3

Fragment of Saxon cross arm. Doultling stone burned pink on back.

Sculptured face:

Max width 10 ¾ ins

Max ht, 6 ins – position as in photo

Thickness (max) 5ins

Circular interlace patterns with incised centre spine.

A225 Photo #6

Fragment of Saxon cross shaft. Doulling stone. Rose burning on back.

Sculptured face:

Max ht 8 ½ ins

Max width 4 ¼ ins

Thickness 5 ½ ins

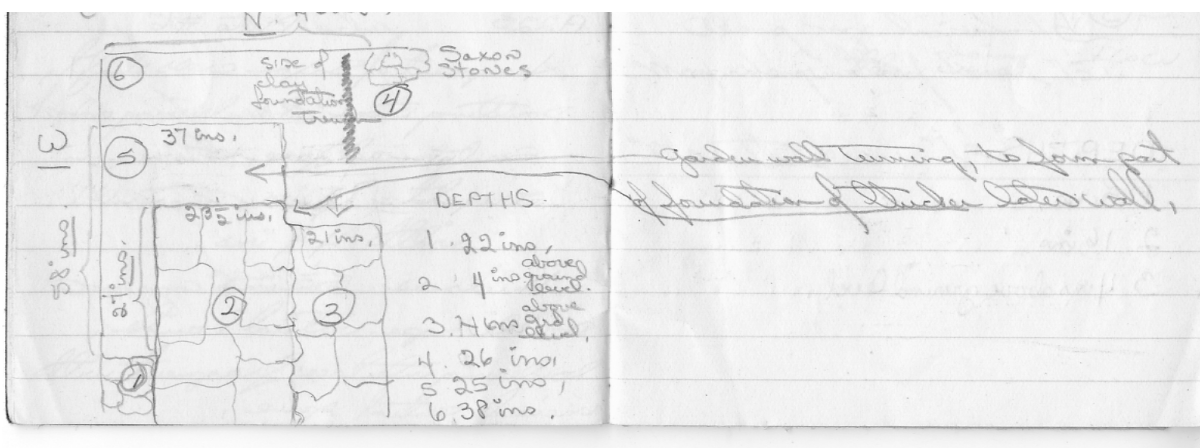
Double rope vertical bands bordering interlace fragment with incised central spine.

Page 6 back

August 3rd

Trench went of monks kitchen. At bottom of W foundation trench, a piece of 16th century Tiger ware, at 33 inches.

At 26 inches and 45 inches from W side along N boundary Saxon paving stones much crushed, layered on dark grey clay



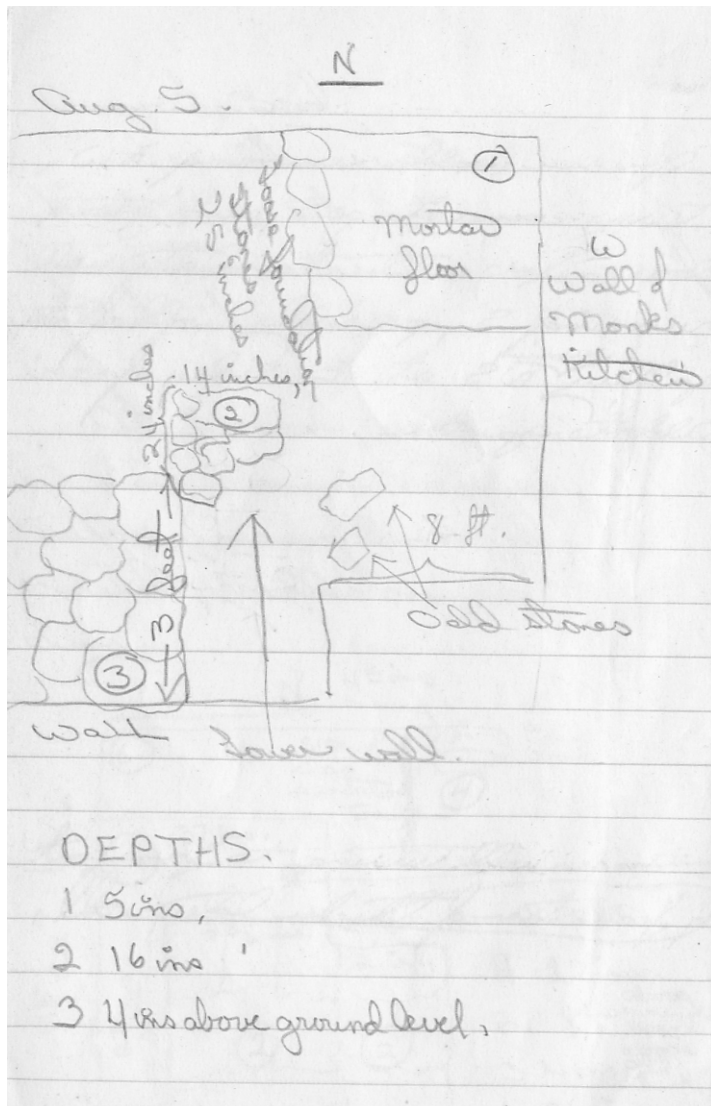
Crushed paving stones in trench west of Monk's kitchen.

With note: garden wall turning, to form part of foundation of thicker later wall.

Page 7

Garden wall running EW, turns corner to go S, and forms base for a thicker later wall running S, possibly wall of later gallery running NS at E side of Abbots garden.

Page 7 back



Walling in trench west of Monk's kitchen.

Page 8

August 9th

Long trench S of Lady Chapel. Section 29. Pins left above at 47' and 60'. Below at 53'

A232

Inventory

Fragment of small Saxon cross shaft, ham stone, corner of plain panel, bordered on one side by plain hand, on other by rope braid.

Sculptured face:

Along rope hand 10"

Max along width of plain ban 7 ½"

Max thickness 7 ½"

Page 8 back

August 10

Trench running east from walk of cloister between 2nd and 3rd buttress from SE corners of Cloister. Section 36. See notebook of NANCY WALL for previous developments.

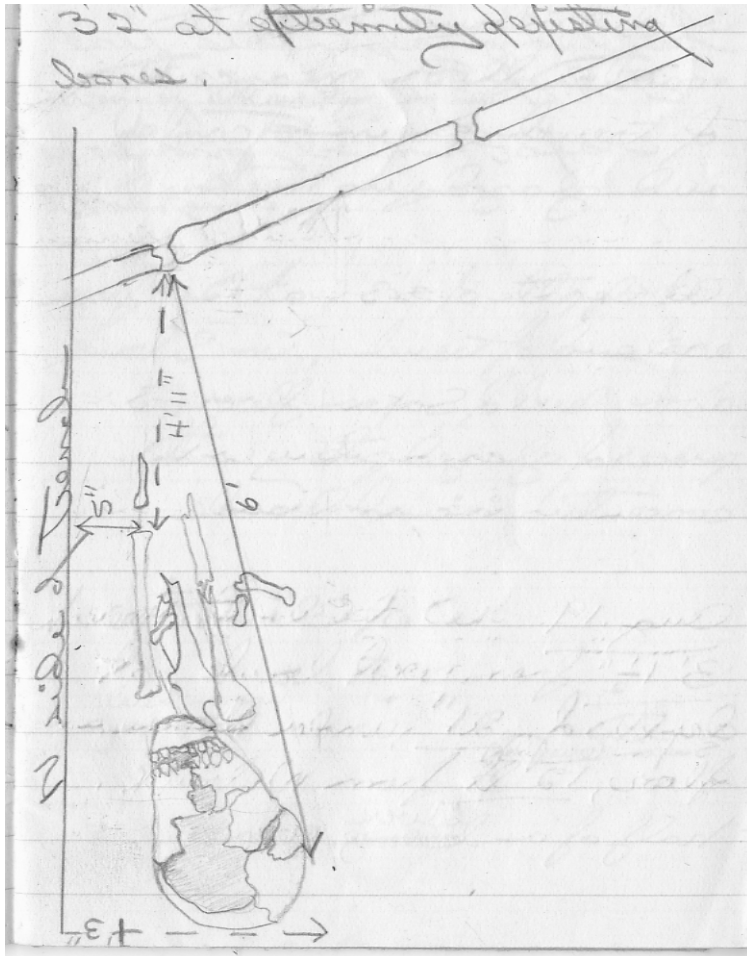
Went through mortar mixing floor [C:1204] at a level of 21-35" below turf.

August 11

At depth of 35 inches 3 ½" out from top of curved bank a stoney mortar layer [C:1209] probably a bedding for flat paving stones. Went through it to a depth of 37", found several bronze fragments [F:SF1117], hunk of iron slag and piece of 12th century Cloister.

Page 9

August 10th Trench running SE from Lady Chapel. Section 29. Skeleton depth 2'10" = skull, 3'2" at extremity of existing bones.



Sketch plan of skeletal remains within trench SE of Lady Chapel.

Page 9 back

Trench running E from walk of cloister between 2nd and 3rd buttress from SE corner of cloister.
Section 36

August 16th

21'3" from East end of trench, 3'9" from surface in disturbance cut through mortar floor [C:1209]
near centre of trench, rim handle, combed and glazed jug neck.

At depth of 3'3" at 20' from East end of trench in S bank above level of Saxon floor, 3 pieces of
glazed pottery with concentric incised bands[F:BF1204].

Aug 19

West Cloister trench 3'1 1/2" from west bank at depth of 21" under upper level above lower Saxon
unsealed floor, 12ft from W bank. Half of a silver coin.

Page 10

West cloister trench depth 29" – 6" in from S bank of trench, 3'9" from East side, flanged bowl rim
of black 4th century R-B ware [F:BF1105]; may be on Saxon bone pits.

Page 10 back

22nd

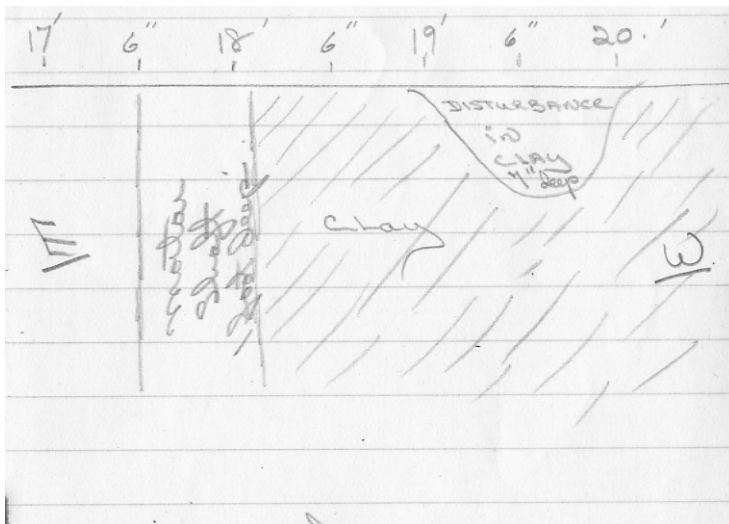
Trench running E from walk of cloister between 2nd and 3rd buttress from SE corner. Section 36

Wall running NS, 2'9" below turf; 3'10" in width, from 8" - 4'6" from E of trench [C:1205]. Possibly a wall running E from it in SE angle of trench [C:1215].

Page 11

August 24

Trench running E from walk of cloister between 2nd and 3rd buttress from SE corner



Sketch plan of trench.

Sketch section of edge running parallel to S side, 9 inches out from side, 10 inches below lower datum.