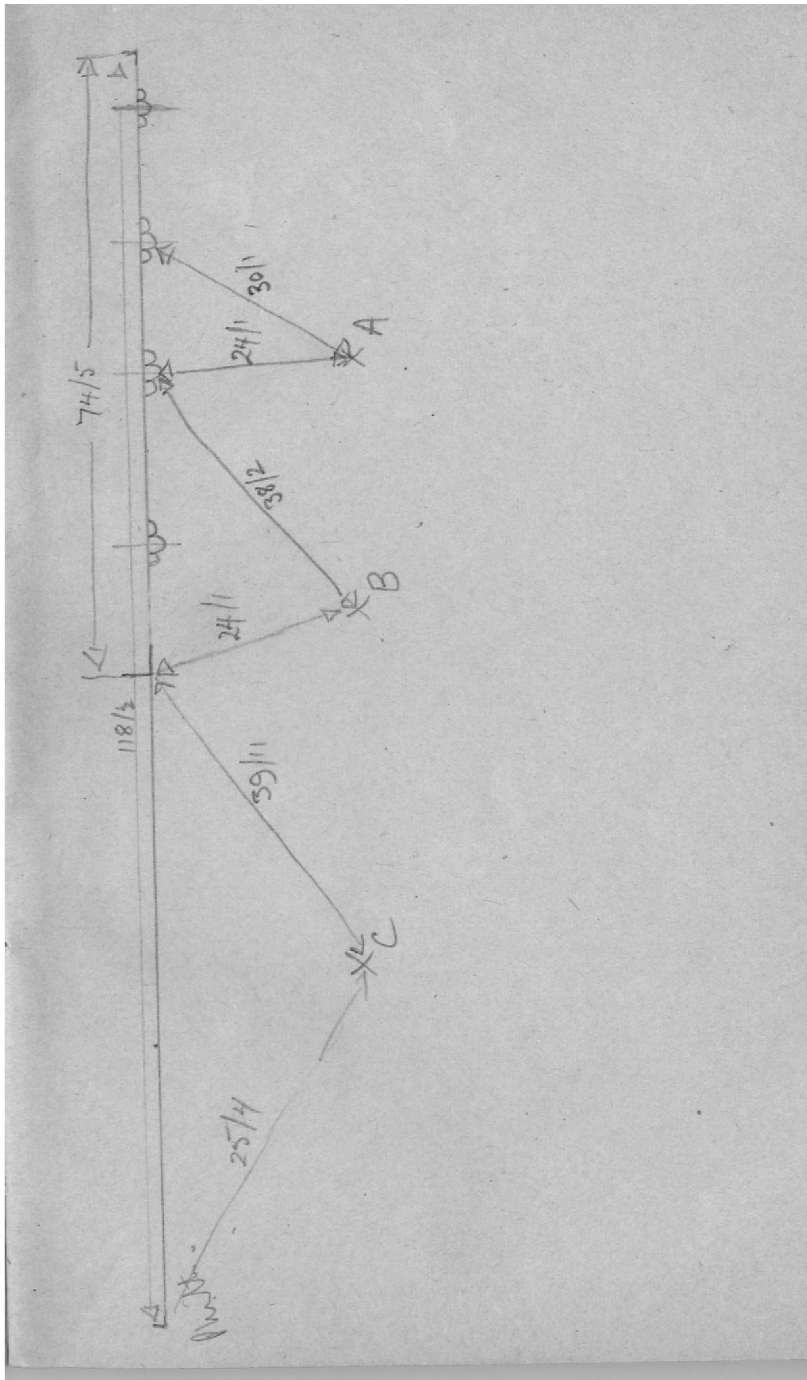




ABC poles marking edge of foundation trench (see sketch). Bench 1/6 wide.

Page 2

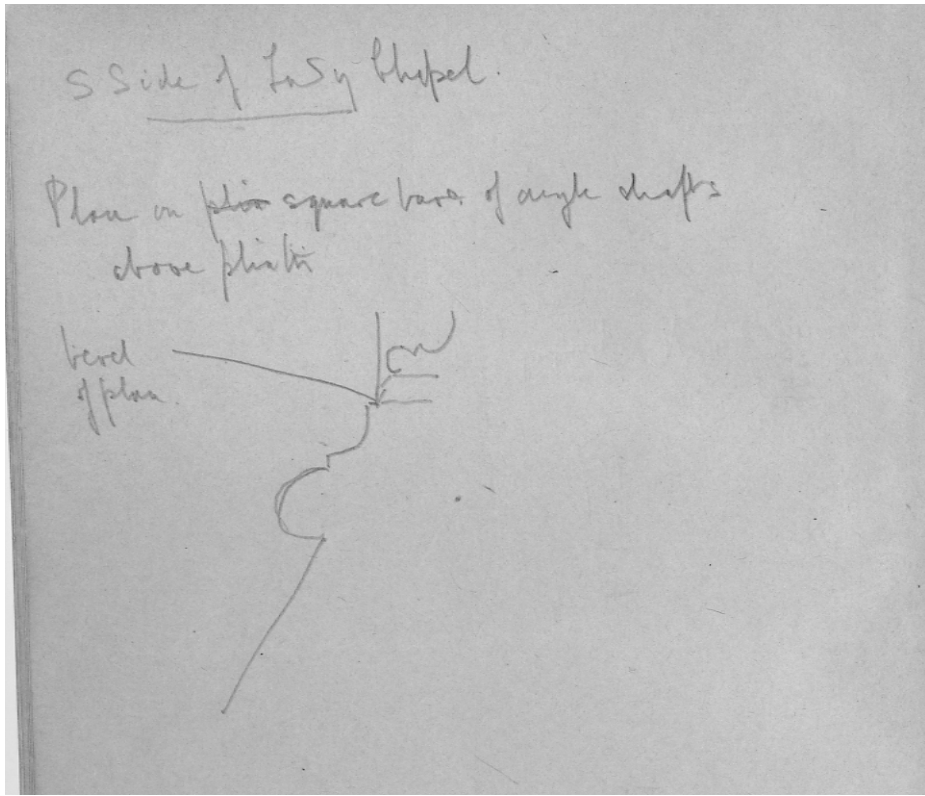


Sketch showing edge of foundation trench in south nave.

Glastonbury 1963

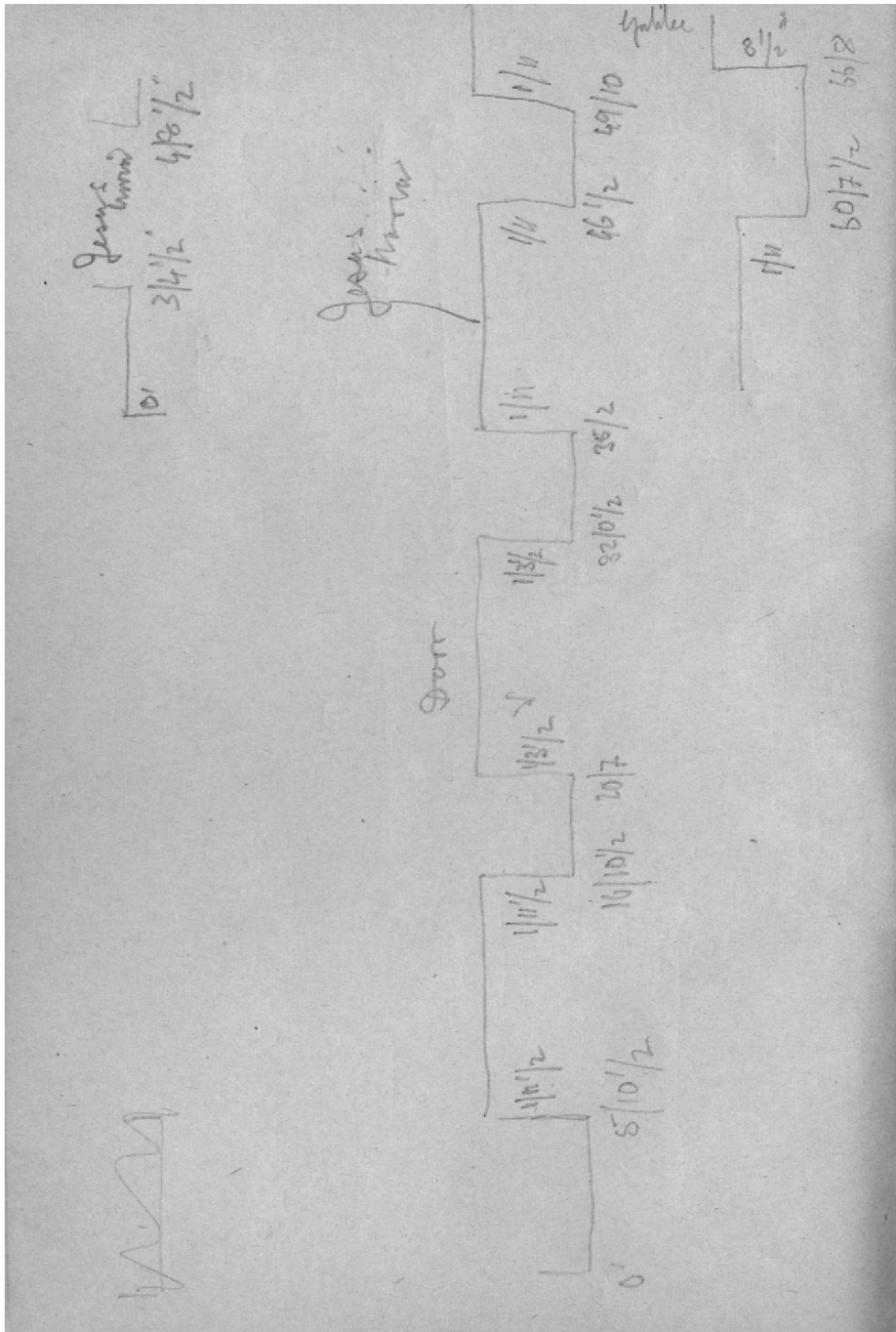
S side of Lady Chapel (see sketch)

Page 2 back

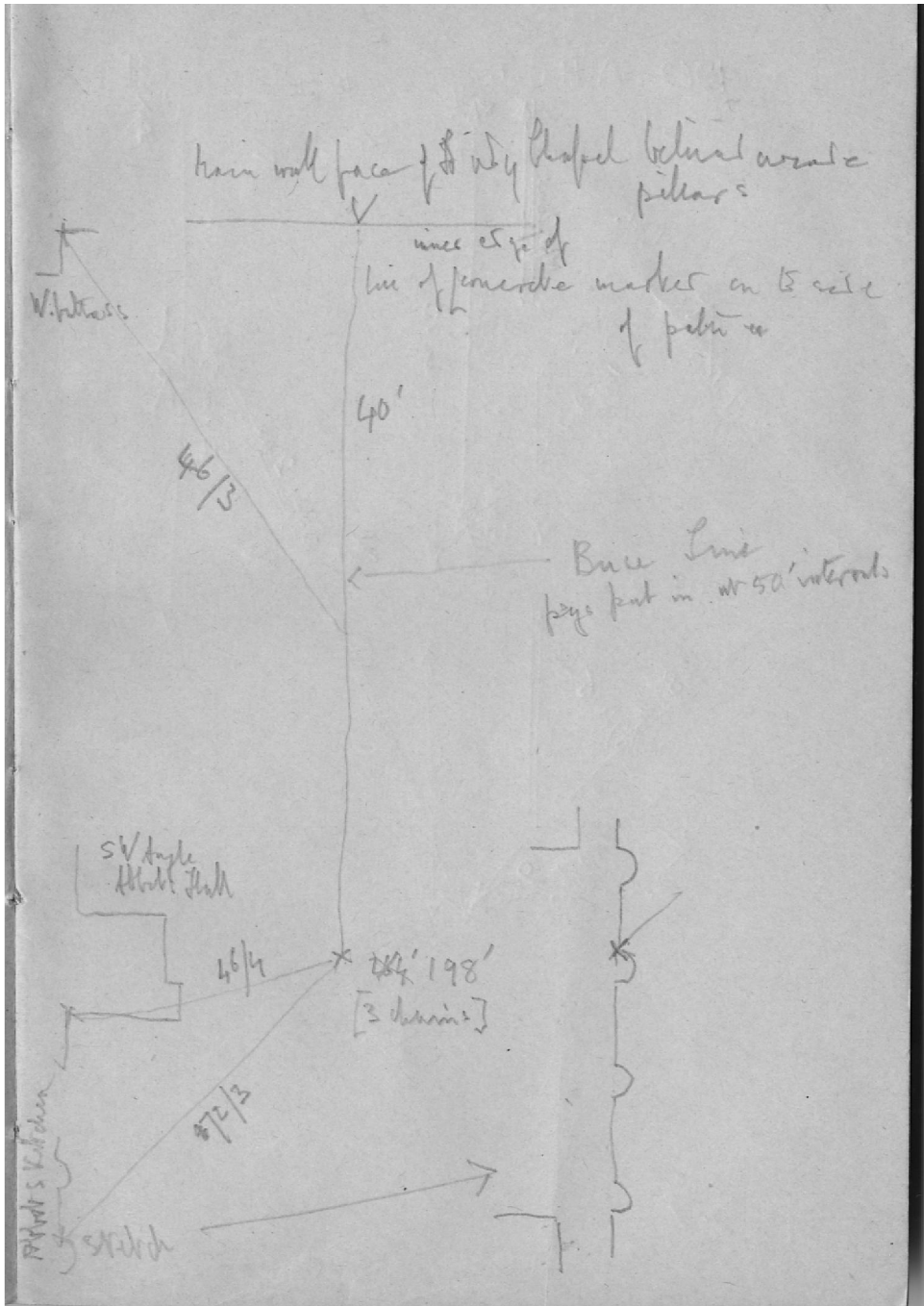


Sketch plan of angle shafts in Lady Chapel.

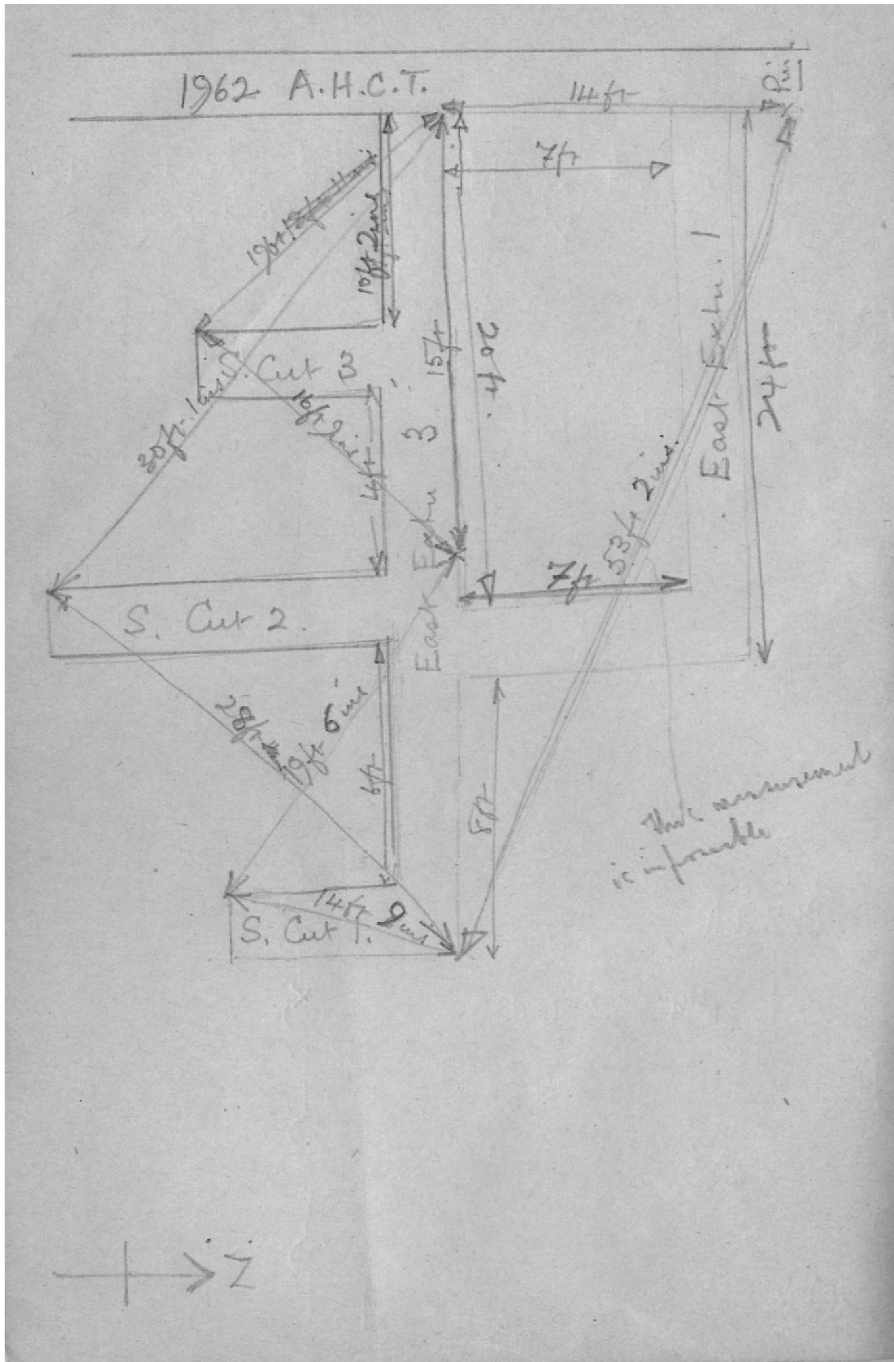




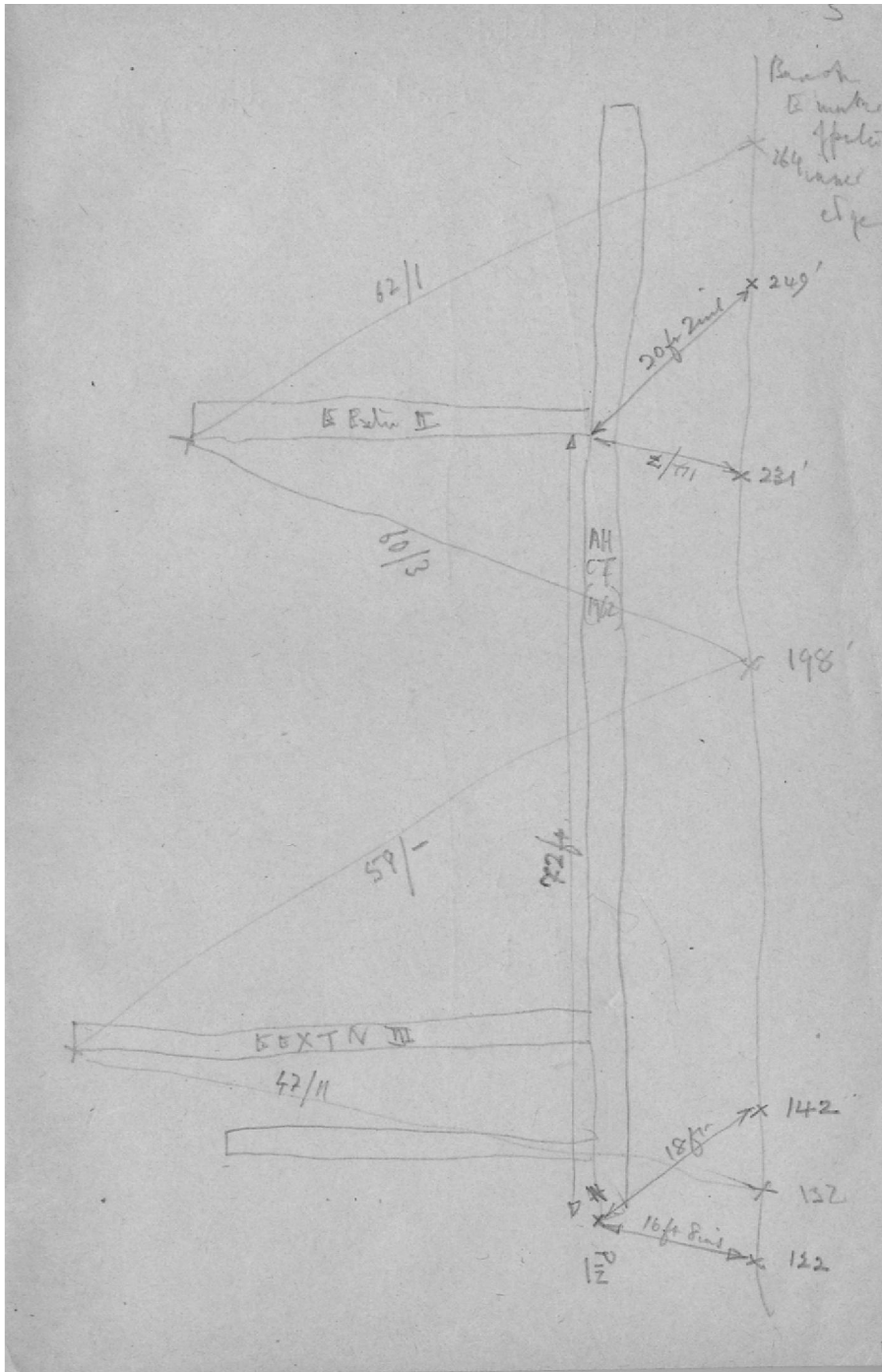
Sketch of south side of Lady Chapel including Jesus Maria stone.



Sketch plan of NE corner of Abbot's Hall in relation to Lady Chapel with measurements.



Sketch plan of NE corner of Abbot's Hall in relation to Lady Chapel with measurements.

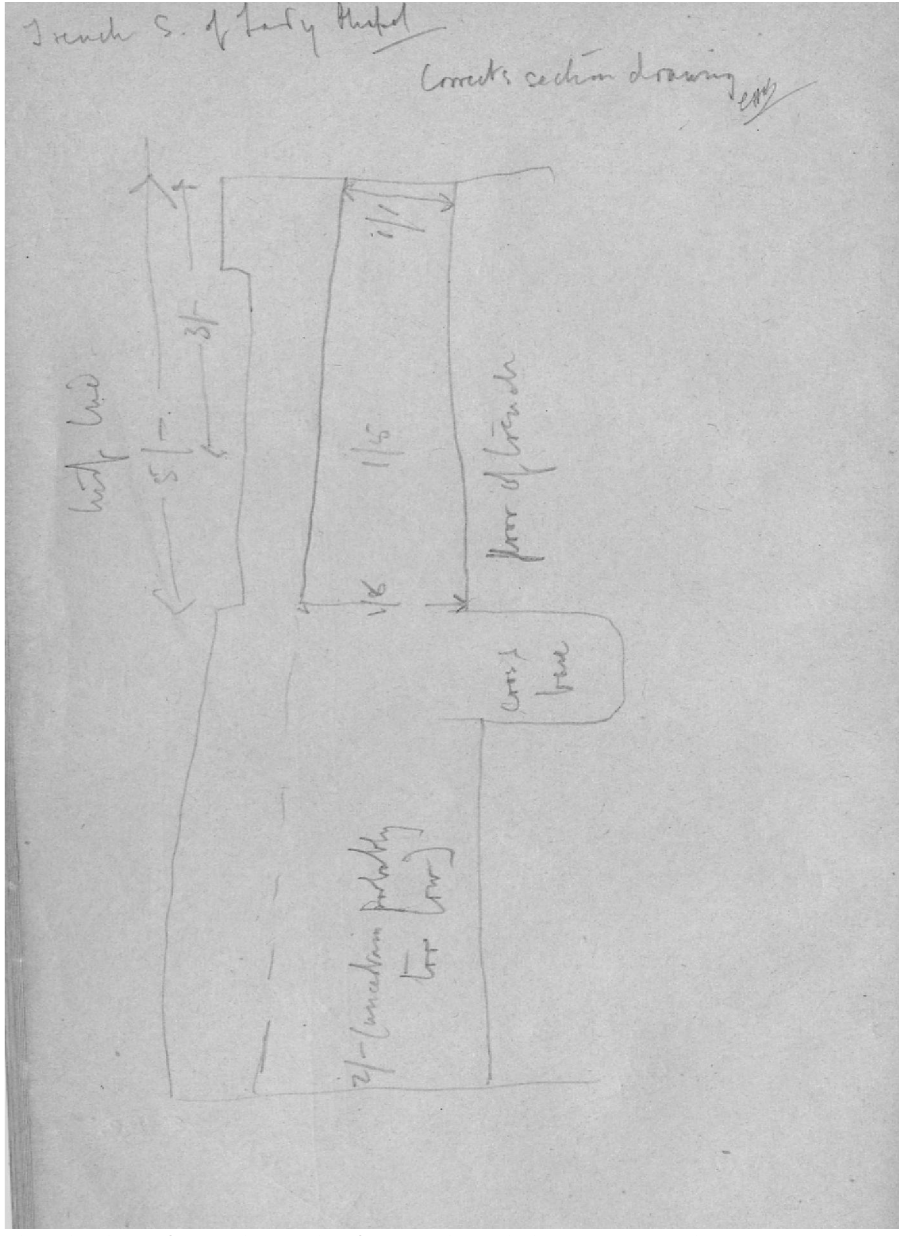


Sketch plan of Abbot's Hall Cross trench with East extension 2.

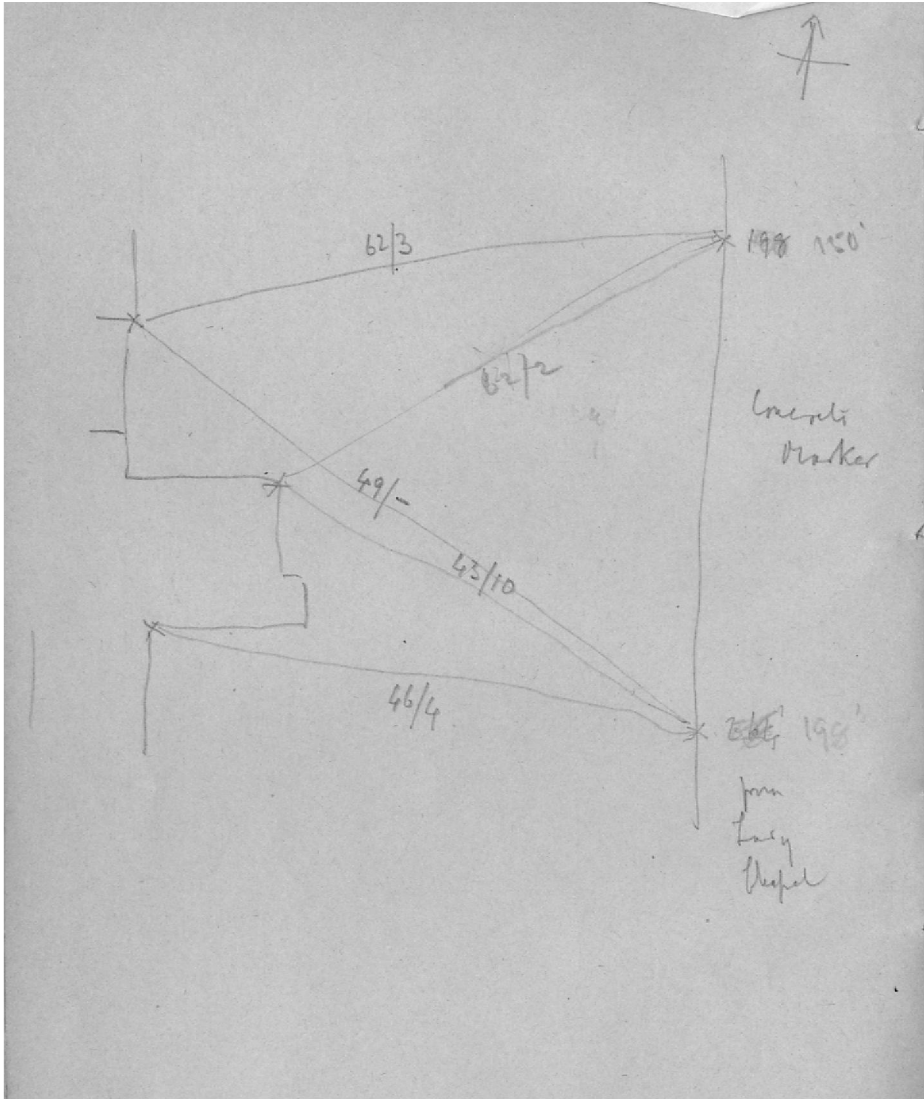


Trench S. of Lady Chapel

Correct section drawing

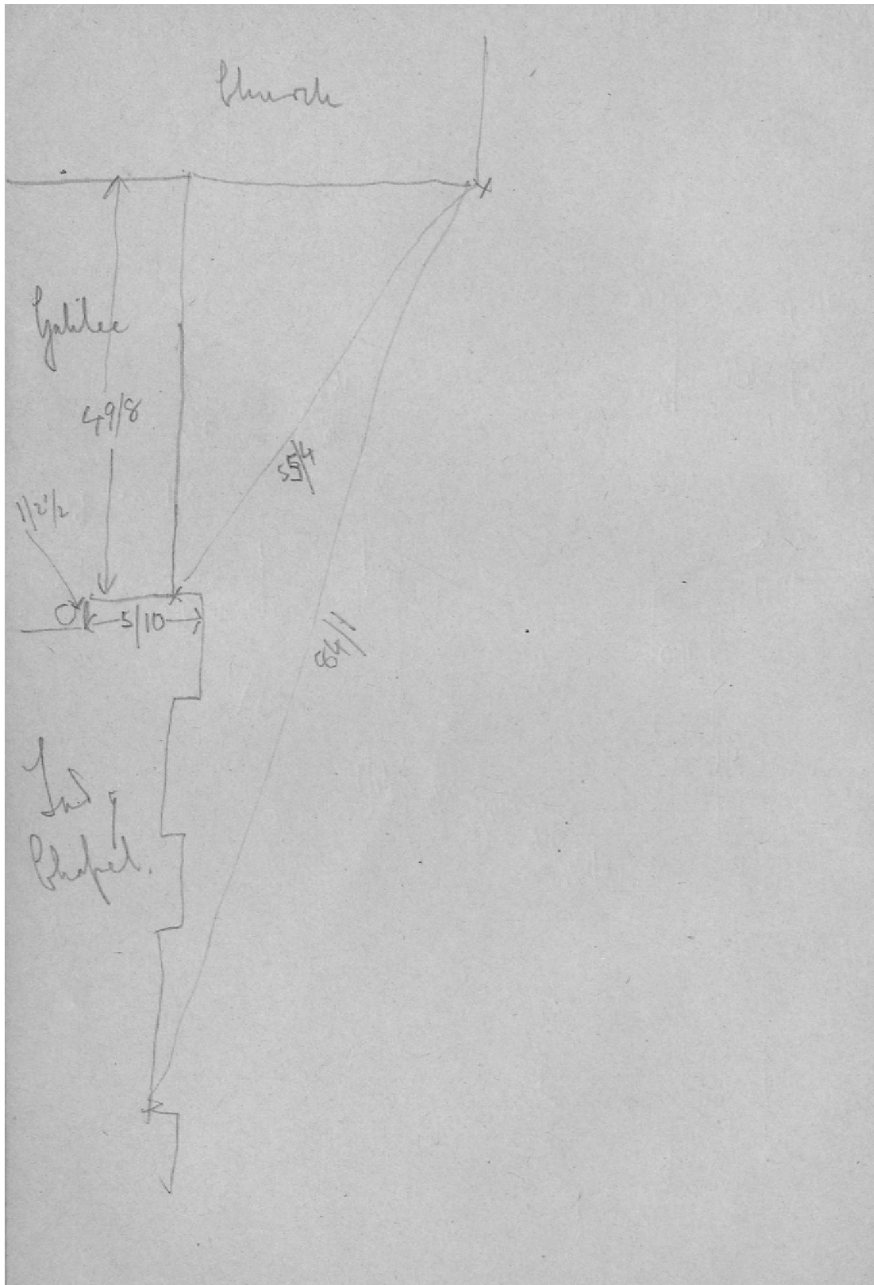


Sketch plan of trench south of Lady Chapel showing cross base.

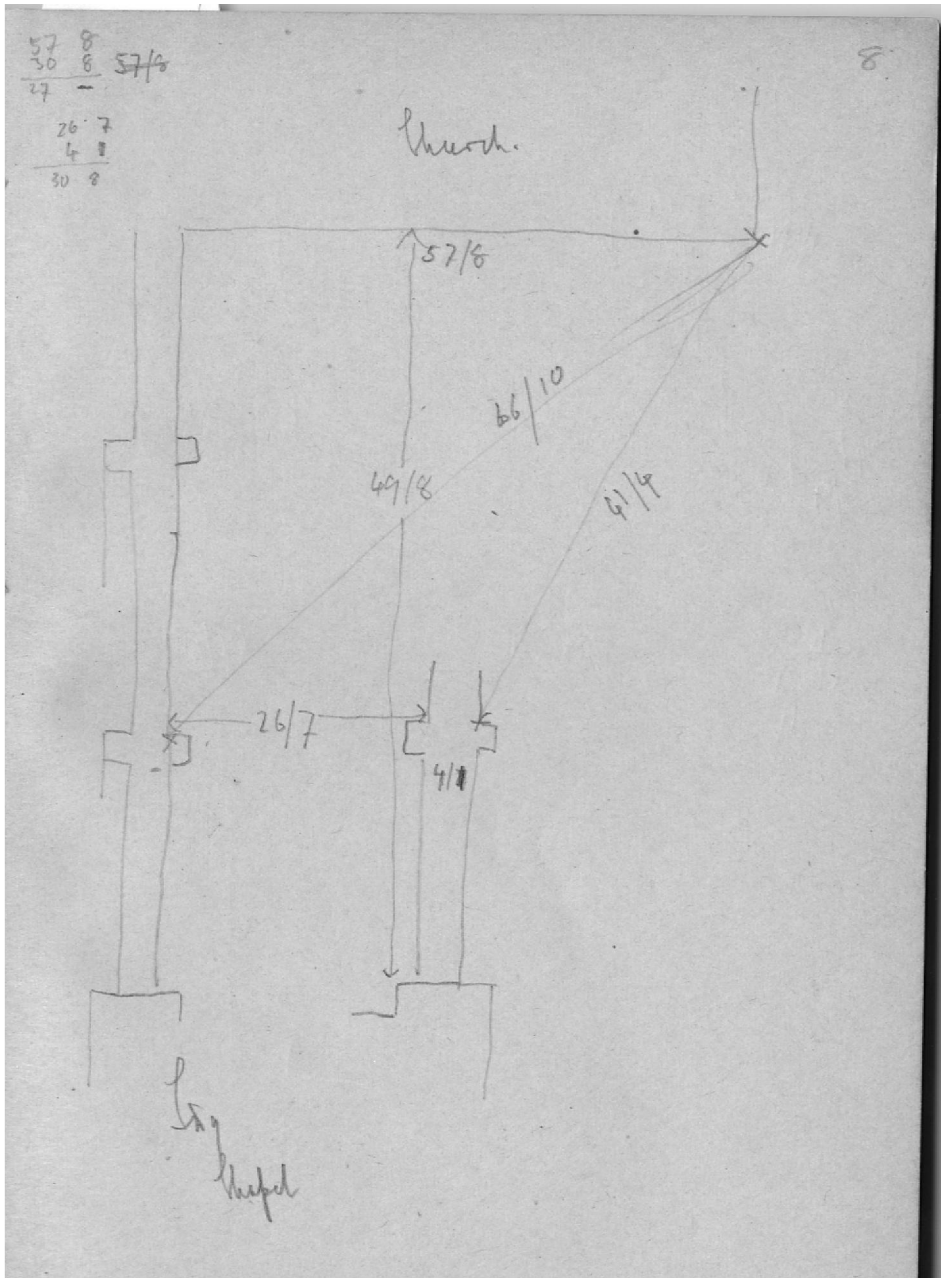


Sketch plan showing measurements between Lady Chapel and Abbot's Hall.



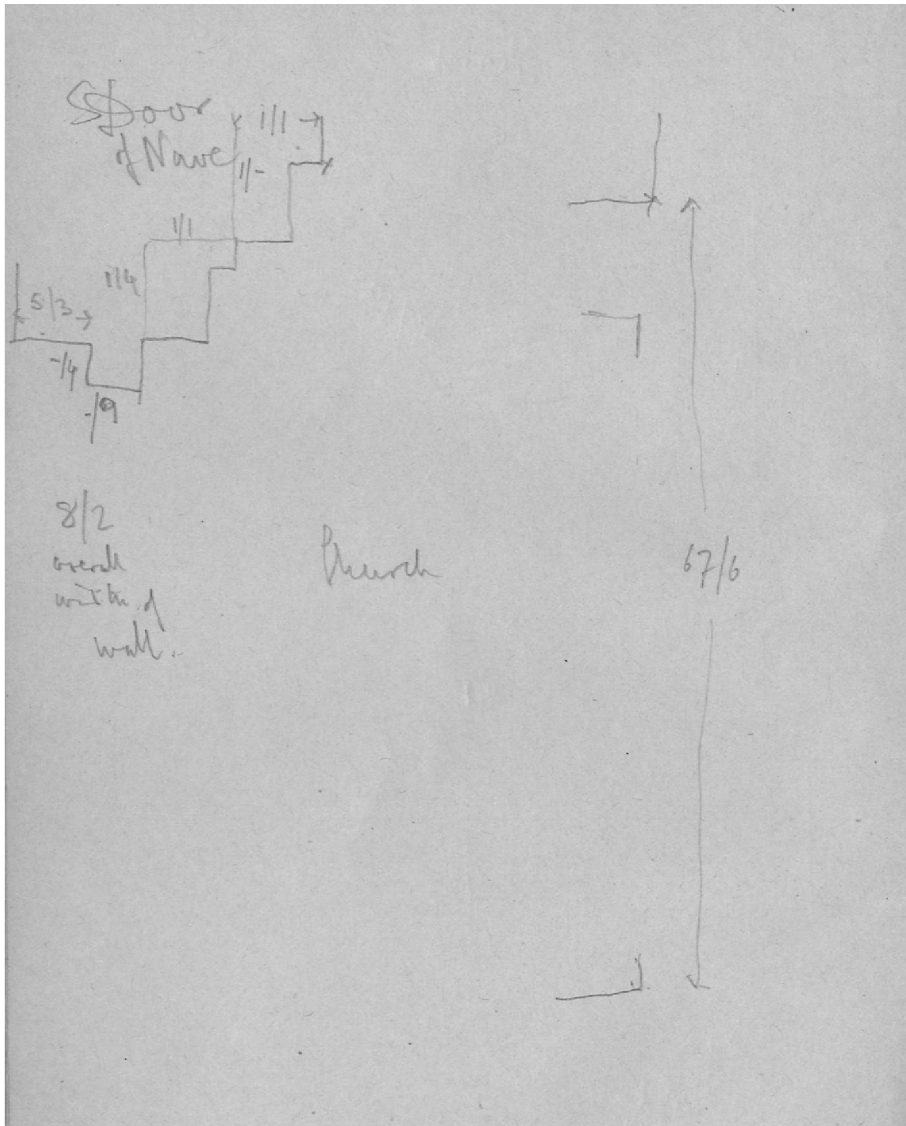


Sketch plan showing measurements between the Lady Chapel, Galilee and nave.



Sketch plan showing measurements between the nave and Lady Chapel.

Page 8 back



Sketch showing south door of nave.