

DB 19/05/2010

Cow Tag 11 Type structural post

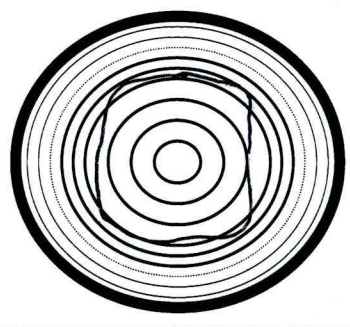
Description 97cm in length 19cm x 18cm at 'end A' tapering to a point at 'end B' Has been worked to a point presumably to stick into the ground. Some toolmarks visible throughout. large crack penetrates this post. No fastenings.

chamfered edges.

Wood Science:

possibly oak

- Bark Yes No
- Sapwood Yes No
- Knotty No
- Straight grained Yes No



Recommended action: [samples, additional photos, moulding, queries and problems]

Discarded.

Checked: [corrections needed]

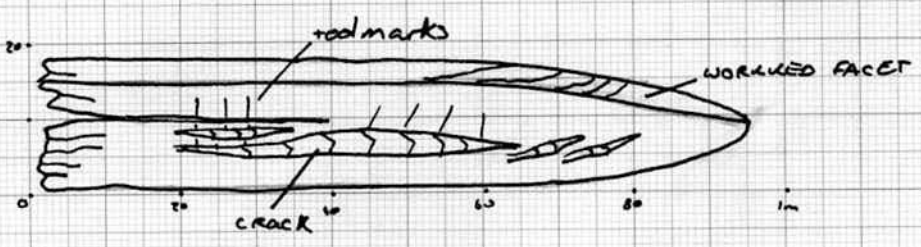
NN 11/5/10.

Cleaned: Recorded: emc 20/4/10 Photos: ✓

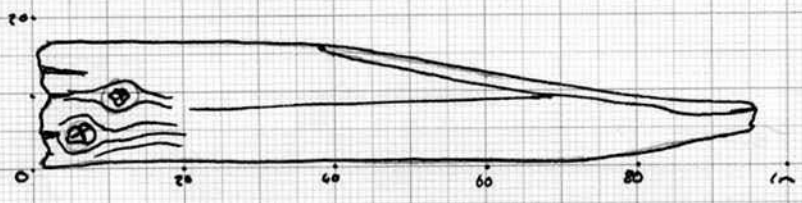
SURFACE A



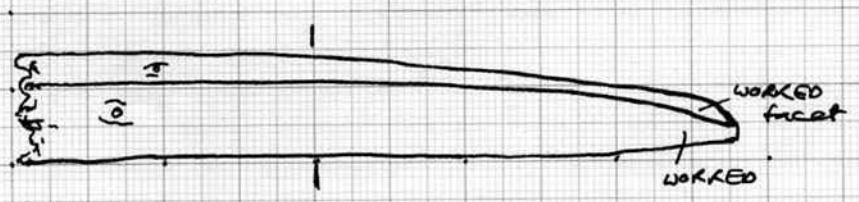
SURFACE B



SURFACE C



SURFACE D



CROSS SECTION



scale 1:10