

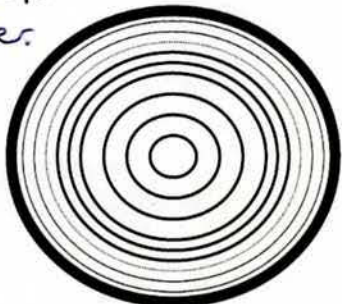
Oak discarded 11/5/10. DB 19/05/2010

Cow Tag 17 Type possible structural post

Description 70cm in length. Tapers to a point at 'end A'. Badly damaged at 'end B'. 8cm wide x 8cm thick (varies). No fasteners. It is in a dried out and extremely brittle state. Surfaces are cracked and covered in a orange/yellow staining or growth. May have been part of a riverfront structure however it can not be said for certain.

Wood Science: unable to read due to poor state of timber.

Bark	Yes	No
Sapwood	Yes	No
Knotty	Yes	No
Straight grained	Yes	No



Recommended action: [samples, additional photos, moulding, queries and problems]

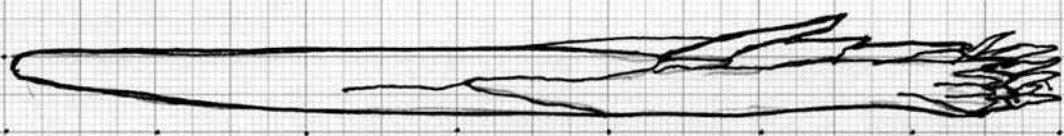
Checked: [corrections needed]

Cleaned: Recorded: RMC 16/4/09 Photos: ✓

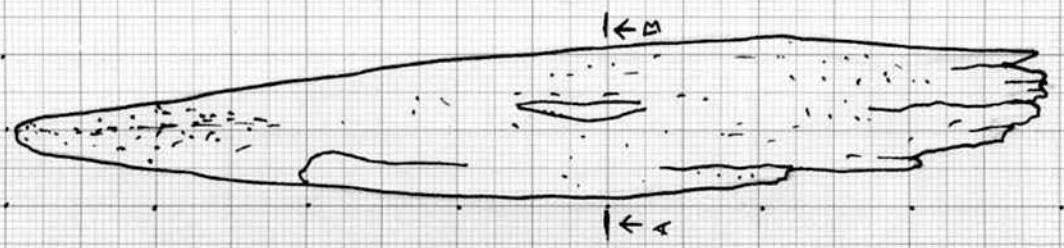
Surface A



Profile B



Surface C



SECTION



scale 1:5