

DB 19/05/20

Cow Tag 035 Type plank fragment

Description
length 117cm
width 18cm
depth 4cm
Side A has a metal nail hole, the head impression is 3cm in diameter, shaft is 1.4cm in diameter. Crack runs diagonally 22cm in length, runs through treenail hole. Nail is not present. treenail hole is 3cm in diameter.
Another metal nail hole is present which has been discoloured by the nail. The nail head impression is 3.7cm in diameter and the shaft is 1.5cm in diameter.
Section of original damage which may have been caused during the creation of the ship. Crack 30.5cm in length alongside the second nail hole.
Side B has the bottom section of the nail shaft 1cm in diameter. The diagonal crack is 14.6cm in length and 2cm wide in the centre. The treenail hole is 3.5cm in diameter. The second metal nail shaft is 1.4cm in diameter. Side B is very cracked. There is a small hole located in the centre of the timber 8.1cm in diameter on side B and 1cm on side A, on side A located in a groove 4.5cm long.

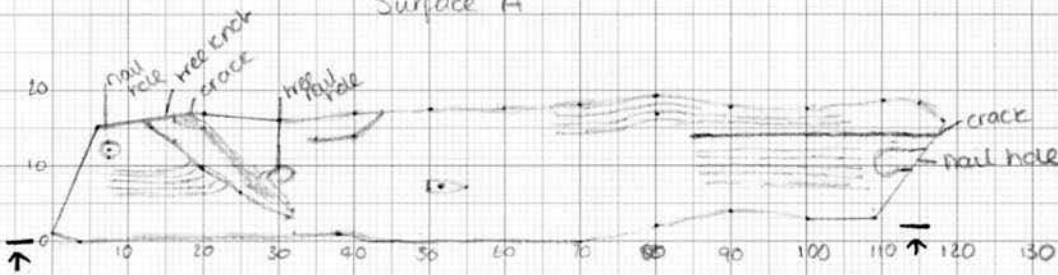
Wood Science:
Bark Yes No
Sapwood Yes No
Knotty Yes No
Straight grained Yes No
difficult to see grain, radially cleft.
approx 30 tree rings visible.
2 large knots
tree rings approx 0.4cm wide
fairly straight grained
[Diagram of a tree cross-section showing concentric rings and a central knot]

Recommended action: [samples, additional photos, moulding, queries and problems]
Must be sawn with number of large knots.
Nail heads related with square shafts.
DISCARDED Possible wood end??

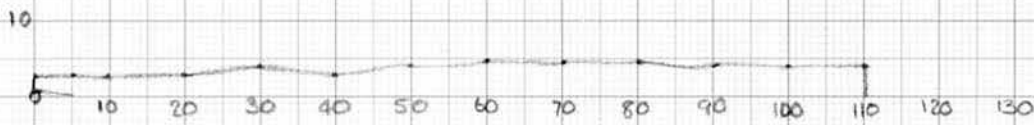
Checked: [corrections needed]
NN 11/5/10

Cleaned: Recorded: Photos:
KS 12/04/10

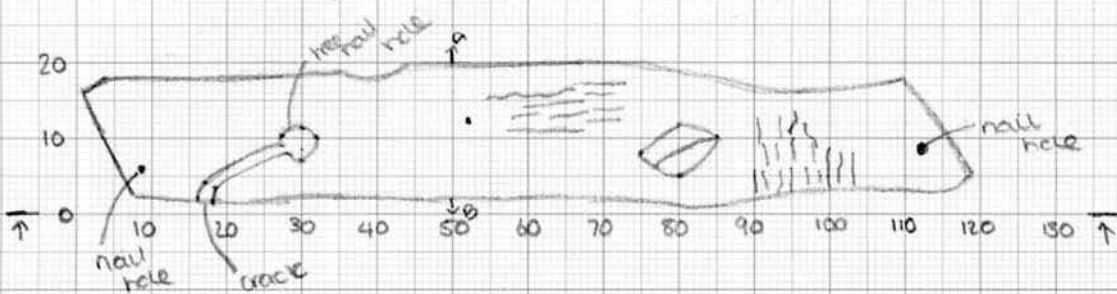
Surface A



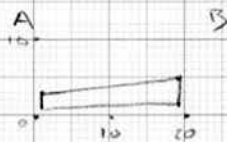
Profile



Surface B



Cross Section



scale 1:10