

Ongino 211, oak, discarded 11/5/10

Cow Tag 43	Type Timber fragments
----------------------	------------------------------

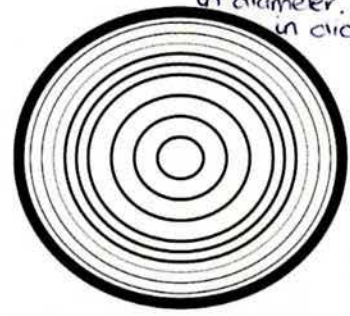
Description
43 is in two pieces.
 Piece A - length 71cm width 10cm depth 4cm
 Piece B - length 74cm width 9cm depth 3cm

DB 19/05/2010

Piece A:
 Side A - The surface is very cracked with modern damage. It has one partial treenail hole 3cm in diameter. Also has one metal nail and ~~two~~ metal nail shaft. The nail is in a knot. The nail head is 0.7cm long. The metal nail shaft is 0.6cm in diameter. The second has a crack running through it and is 0.5cm in diameter. Also contains a second partial treenail hole 3cm in diameter.
 Side B - The surface is very cracked. It has two metal nails and ~~two~~ ^{three} metal nail heads. Side B also contains two partial treenail holes. The first treenail is 3.5cm in diameter. The second treenail is 2cm in diameter. The first metal hole is 1cm in diameter. The second metal hole is 0.6cm in diameter. The third metal hole is 0.6cm in diameter. The first nail is 1.5cm wide and 1.8cm long. The second is 1cm wide. Side B has possible cut marks near one of the metal nails.

Piece B:
 Side A - cracked surface. Contains three partial treenails. The first is distorted by damage and is approx. 3cm in diameter. The second is 2.5cm in diameter. The third is distorted by a large crack and is 3cm in diameter. contains modern damage.
 Side B - cracked. 3 partial treenails: 1st - 3.5cm in diameter. 2nd - 3cm in diameter. 3rd - 3cm in diameter.

Wood Science:	Side B - cracked. 3 partial treenails: 1st - 3.5cm in diameter. 2nd - 3cm in diameter. 3rd - 3cm in diameter.	
Bark	Yes	<input type="radio"/> No
Sapwood	Yes	<input type="radio"/> No
Knotty	<input checked="" type="radio"/> Yes	No one in piece A.
Straight grained	Yes	No surface is very cracked.



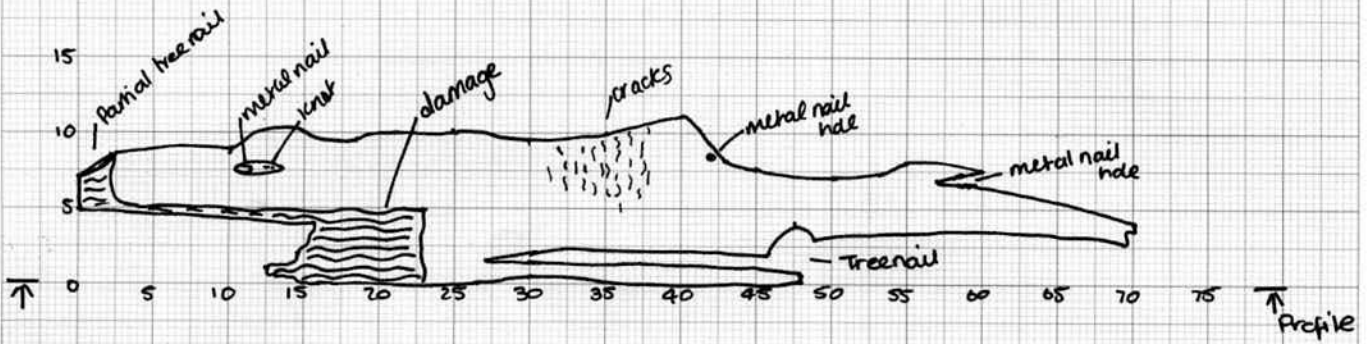
Recommended action: [samples, additional photos, moulding, queries and problems]

Checked: [corrections needed]

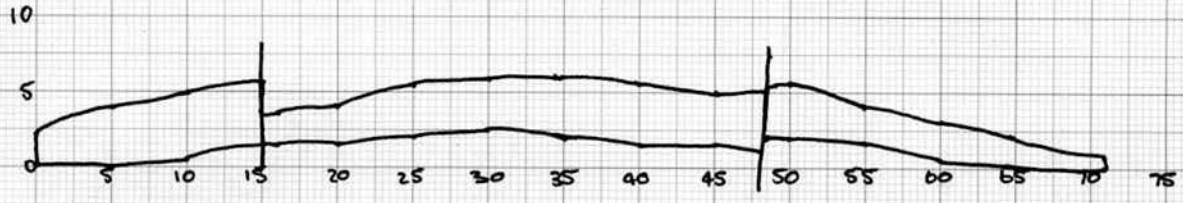
Cleaned:	Recorded: KS 21/4/10	Photos: ✓
-----------------	--------------------------------	------------------

Piece A

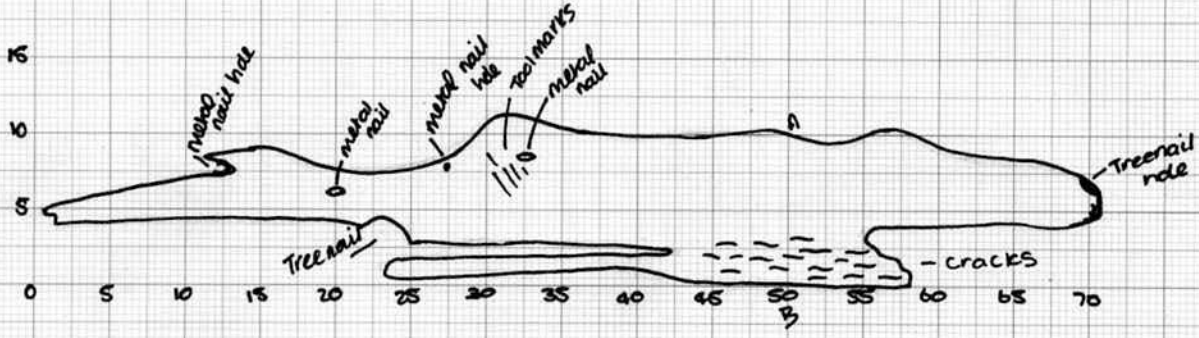
Side A



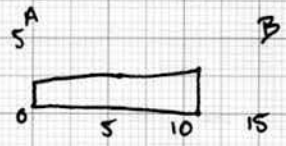
Profile



Side B.



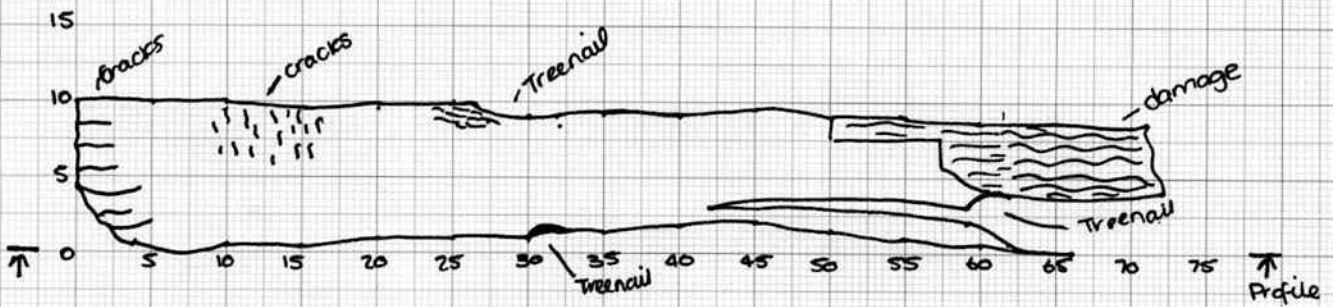
Cross-section



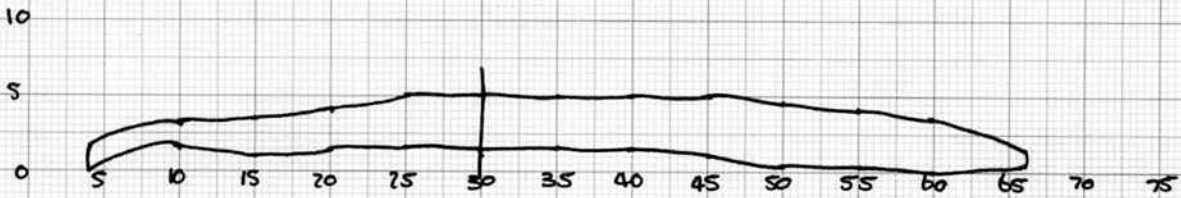
Scale 1:5

Piece B

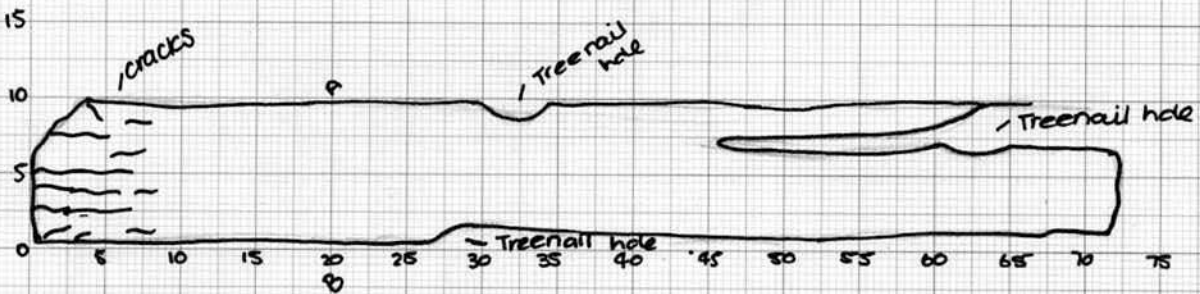
Side A



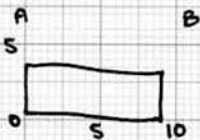
Profile



Side B



Cross-Section



Scale 1:5