

Dark Decoded

11/5/10

DB 21/05/2010

Cow Tag

49

Type

two timber fragments.

Description

Timber 49 is in two pieces.

Piece A - ~~26~~ length 26.5cm width 5.5cm depth 3cm.

Piece B - length 11.5cm width 3.6cm depth 1.5cm

Piece A:

Side A is very dry with modern damage on one side 14cm long. The surface has patches of rust colour.

Side B is very cracked with modern damage at one end. The surface has patches of rust colour.

No visible treenail holes, metal nails nor fasteners.

Piece B:

Side A's surface is covered in rust coloured patches and white patches.

Side B is cracked and has a small amount of rust coloured patches.

Piece B has no visible treenail holes, metal nails nor fasteners.

Wood Science:

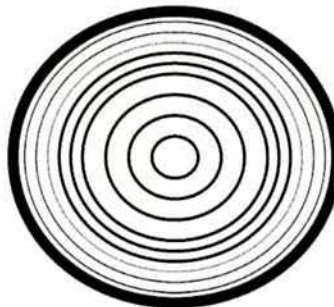
Surface damage is too great to see tree rings.

Bark Yes No

Sapwood Yes No

Knotty Yes No

Straight grained Yes No



Recommended action: [samples, additional photos, moulding, queries and problems]

Checked: [corrections needed]

Cleaned:

Recorded:

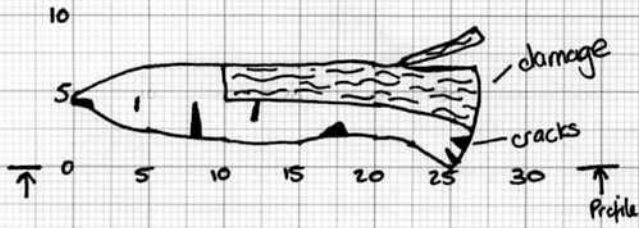
KS 20/4/10

Photos:



Piece A

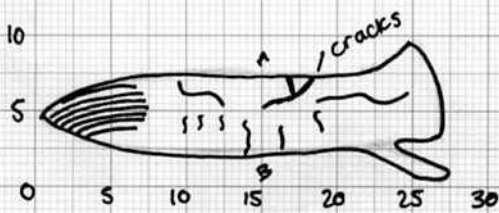
Side A



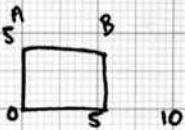
Profile



Side B



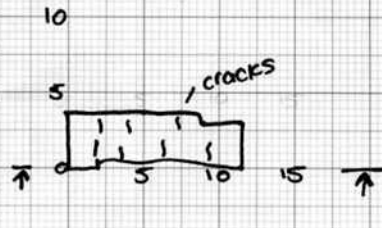
Cross-section



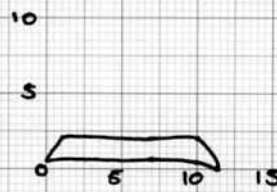
Scale 1:5

Piece B

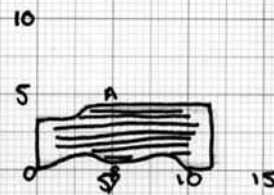
Side A



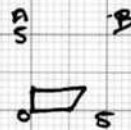
Profile



Side B



Cross-section



Scale 1:5