

DB 13/3/8

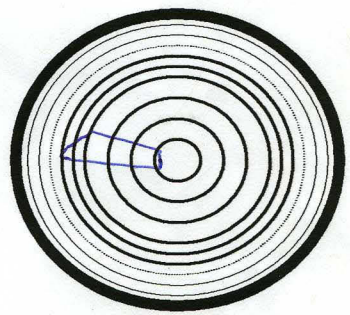
Cow Tag 564 Function Code 72.4

Brief Description: [timber element, p/s, condition, fragments]
GOOD CONDITION - LAND WITH ~~THICK~~ ± 45°; QUOTE TWO INTENTIONAL

Notable Features: [tool marks, scribed lines, decoration, repairs] POINTS TO LOOK OUT FOR WHEN RECORDING ufos
ON THE INBOARD FACE TWO INTENTIONAL MARKS, ON THE LAND WE VERY WELL VISIBLE TOOL MARKS. ~~SOME PART OF THOSE MARKS HAVE~~

Wood Science: [rings, ARW, knots, sapwood, conversion]

Radial with level on inboard face cutting across grain - see drawing Age test? If so pith beyond upper edge. c 110H. ARW = 195/110.

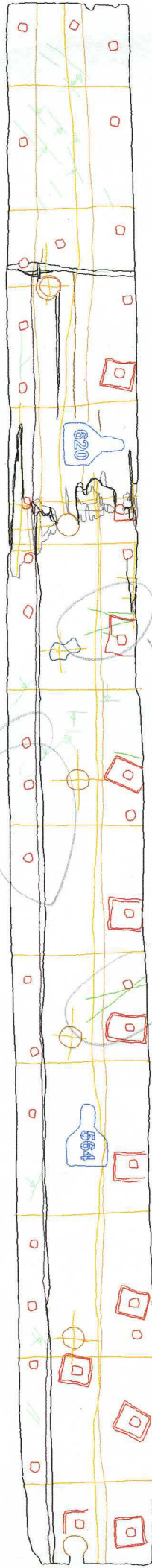
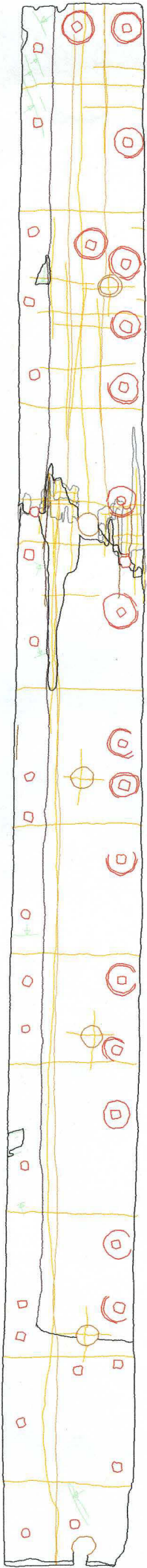


Recommended action: [samples, additional photos, moulding, queries and problems]

BJ
Re Rec'n 30/08/07

Cleaned: 5/09/05 MM	Recorded: 12/09/05 MM	Photos: 5/09/05 B/D INSCRIBE MARKS, # OF LAND (MM)
Checked: [corrections needed]		Initials & Date: MM 4/11/5
Corrections Done [desktop, Faro Arm?]:		Initials & Date:

620
Thin
MM



WOOD SIGNATURES

ROAD