

DB 17/05/2010

Cow Tag 005 Type possible beam.

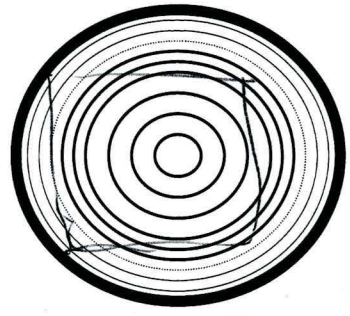
Description 1.86m in length, Approx 37cm wide x 21cm thick. Extremely damaged, possibly by a pile. End 'B' is cut, possibly done on site. Some evidence of fasteners, however all is extremely distorted. One toenail hole, 3.3cm in diameter. One iron bolt partial hole Approx 4cm wide x 22cm in length. Second partial metal fastener 3.3cm in diameter

Another beam element damaged by piling within the ship. End is joint to beam self.

Wood Science:

- Bark Yes  No
- Sapwood Yes  No
- Knotty Yes  No
- Straight grained Yes  No

Fastogram out.

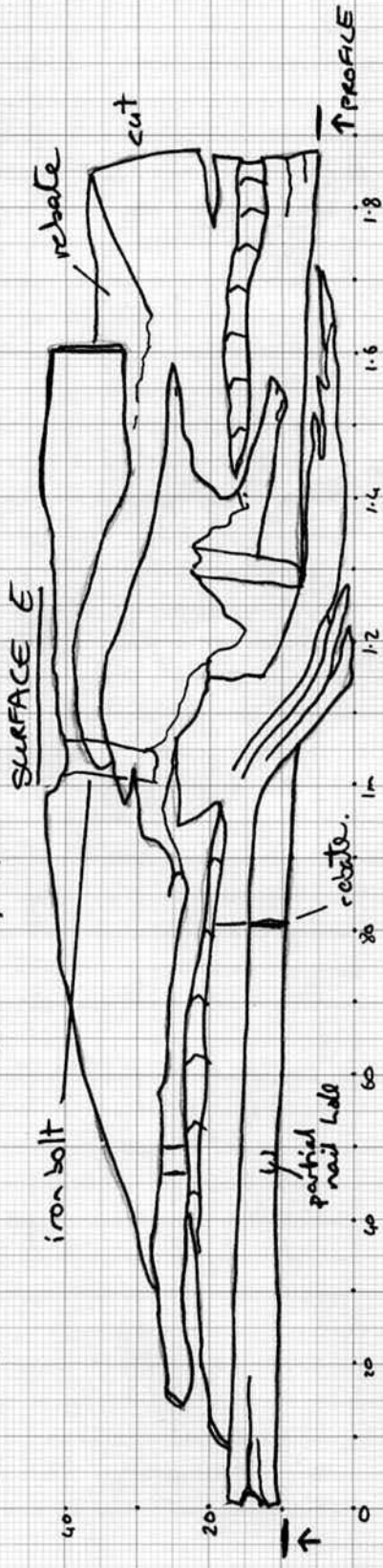


Recommended action: [samples, additional photos, moulding, queries and problems]

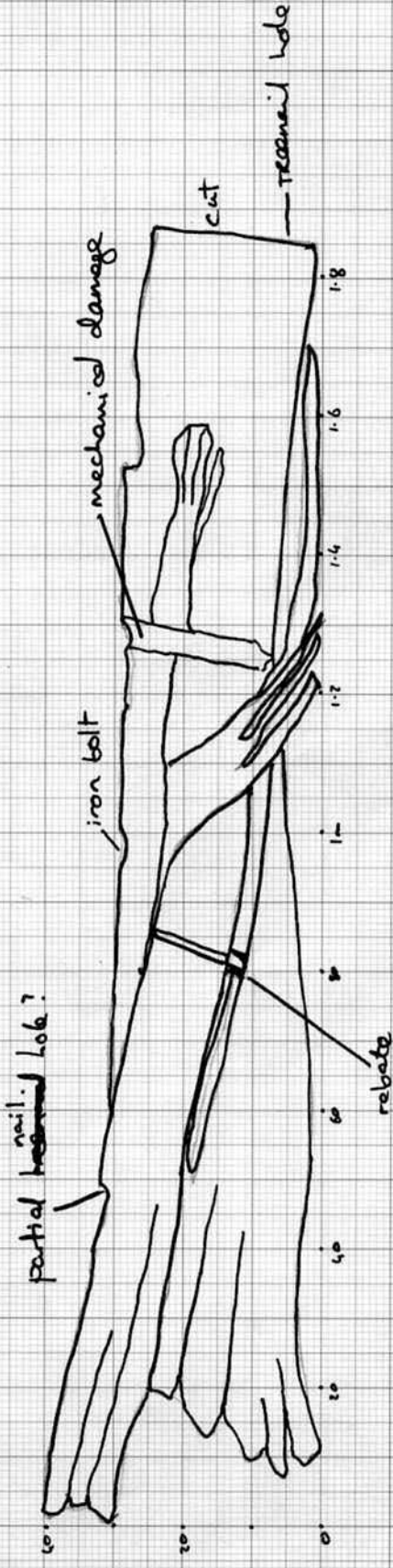
Checked: [corrections needed]  
NN Selective faro-cam record of fastenings & relatives.

Cleaned: Recorded: EMc 22/4/10 Photos: ✓

Cow TAG 005 EMC 22/4/10



PROFILE



scale 1:10