

DB 21/05/2010

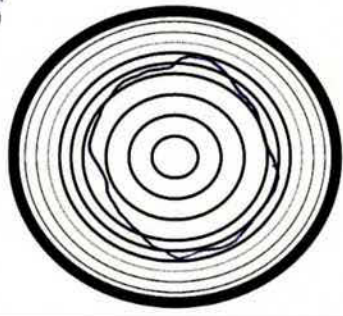
Cow Tag 60 Type POST

Description 1.05m in length, 11cm in diameter (roughly circular) tapering to a point. Extremely dry and cracked most likely part of a river front structure possibly part of the wharf. No rootmarks or fasteners.

Wood Science:

- Bark Yes No
- Sapwood Yes No
- Knotty Yes No
- Straight grained Yes No

large crack run along grain



Recommended action: [samples, additional photos, moulding, queries and problems]

Discarded

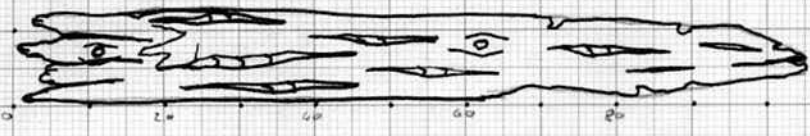
Checked: [corrections needed]

20/4/10

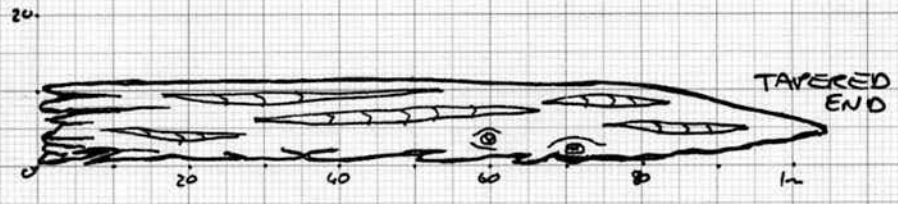
Cleaned:	Recorded: EMC 20/4/10	Photos:

COD TAG 60 OA 60 EMC 20

SURFACE A



PROFILE



SECTION



scale 1:10

