

DB 27/02/08

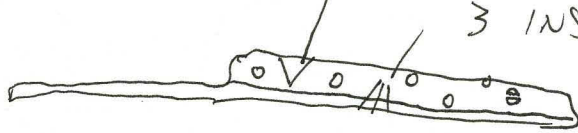
Cow Tag 615 Function Code P 16.5

Brief Description: [timber element, p/s, condition, fragments]

SHORT PLANK, FRAGILE AT AFT END

Notable Features: [tool marks, scribed lines, decoration, repairs] POINTS TO LOOK OUT FOR WHEN RECORDING ufos

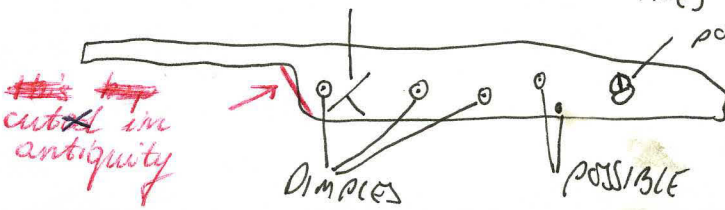
INBOARD:- INSCRIBED 'V'



3 INSCRIBED LINES

ADD. NAIL UNDER LOW TAG, MAY/MAY NOT GO THROUGH - UNSURE

OUTBOARD:-



POSSIBLE INSCRIBED LINES

POSSIBLE WEDGE

DIMPLES

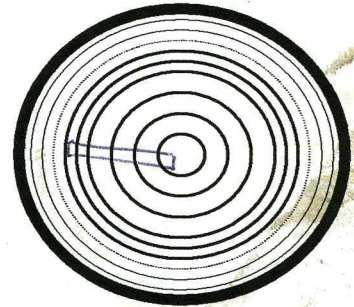
POSSIBLE DIMPLES

~~this top~~  
cut in  
antiquity

2 x Type 1 inboard

Wood Science: [rings, ARW, knots, sapwood, conversion]

Radial - 60H at forward scarf  
Pith beyond upper edge?  
ARW = 160/60.



Recommended action: [samples, additional photos, moulding, queries and problems]

Cleaned: BS  
08/06/06 VI  
KHM

Recorded: 14/06/06 MMR

Photos:

Checked: [corrections needed]

✓

Initials & Date:

NN 14/6/6

Corrections Done [desktop, Faro Arm?]:

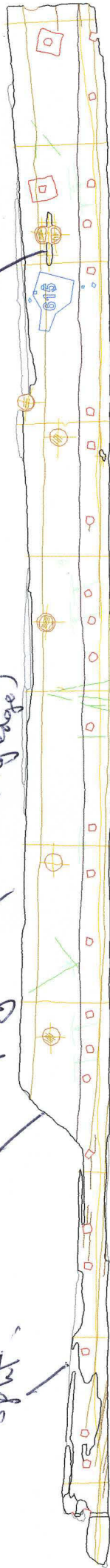
Initials & Date:

modern cut (chassis?)

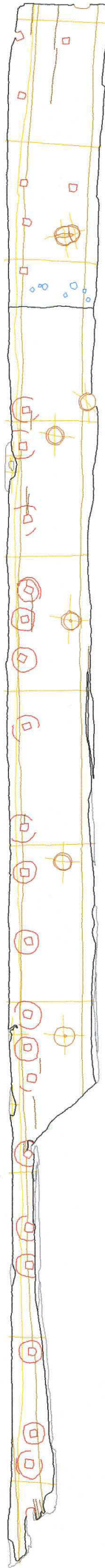
split (w/long edge)

cut in anticipation

split



615 P16\_5 Monika Maleszka-Richie 14 June 2006



double  
double