

Cow Tag

66

Type

Possible ship plank

Description

length 97cm width 26cm depth 4cm

Side A has a metal nail hole 1cm in diameter. Another metal nail hole 1cm in diameter connects to a treenail hole by a 2cm long and 1cm wide gap. The treenail is 4cm in diameter. The second treenail hole is 3cm in diameter. Also the third treenail hole is 3cm in diameter. The surface is very cracked with a small amount of rust colouring. There is also a large knot 12cm long. Section on one end of possible modern damage. Surface has evidence of inscribed lines. no pattern visible.

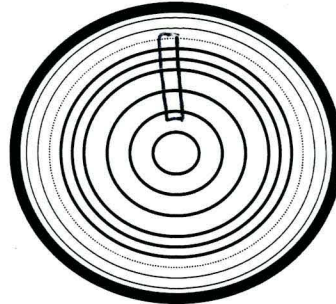
Side B has a metal nail hole impression 3cm in diameter and the shaft is 1cm in diameter. Another metal nail impression is 3cm in diameter and the shaft is 1cm in diameter. A treenail hole is 3cm in diameter. Also another treenail is 3cm in diameter. The impression of a metal nail is 3.5cm with some slight rust colouring. The shaft is 2cm in diameter. A treenail hole is 3cm in diameter. Has a small tree knot 7cm long. Surface is slightly cracked. There is a thin coating of iron salts which possibly came from the fastenings. Two cracks are present which go through the timber in slight V shape. section on one end is possibly modern damage which may have occurred during excavation.

Wood Science:

Surface is quite dry so difficult to see grain
fairly slow grown

- Bark Yes No
- Sapwood Yes No
- Knotty Yes No
- Straight grained Yes No

approx. 60 rings (max)
appears to be roughly split
oak
seen tangentially



Recommended action: [samples, additional photos, moulding, queries and problems]

DISCARDED

Checked: [corrections needed]

NW 11/5/10

Cleaned:

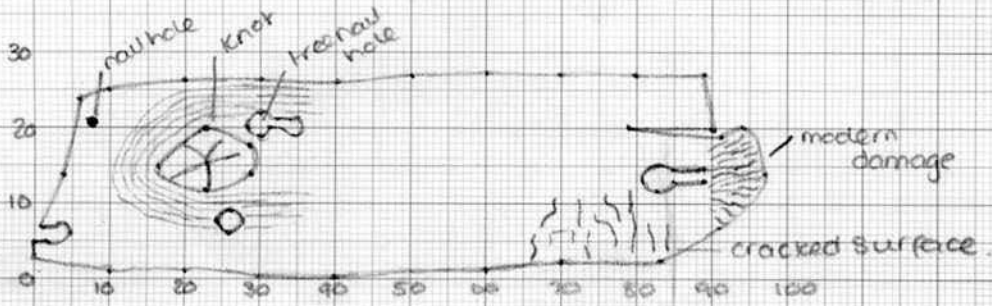
Recorded:

KS 13/04/2010

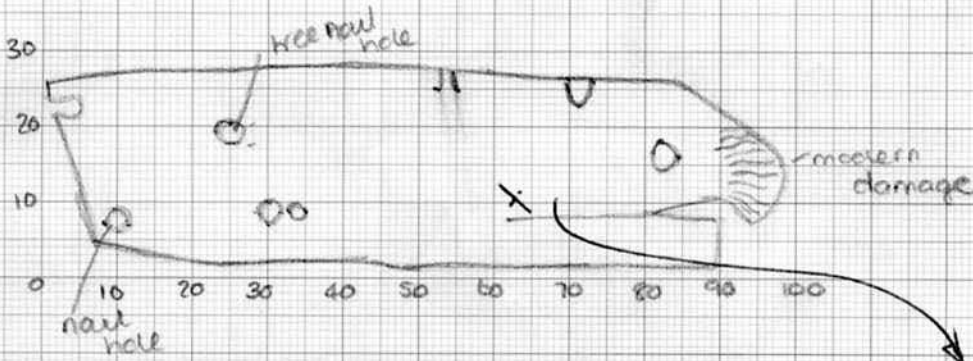
Photos:



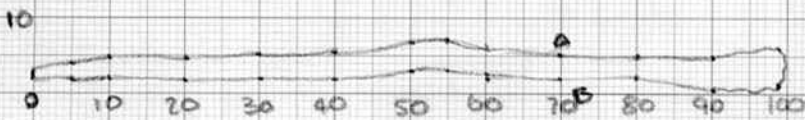
Surface A



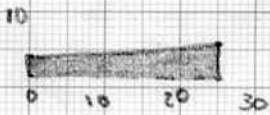
Surface B



Profile



Cross-section



Sample 2835
 taken by DV
 11/10/7.

Scale 1:10