

DB 17/05/2010

Cow Tag 9 Type function unknown

Description

length 46cm width 26cm depth 4cm

The outboard side has two treenail holes and two metal nail holes. One treenail hole is intact and is 3cm in diameter. The second is a partial treenail and is 3cm in diameter. The metal nail head impression is 3cm in diameter while the shaft is 1cm in diameter. The second is slightly split and is the head impression is 3cm in diameter while the shaft is 1cm in diameter. Next to the intact metal nail hole are two cut marks. At one end there is modern damage, there is one large crack and a few smaller cracks. There is also one knot.

The inboard side has two treenail holes and two metal nail holes. The intact treenail hole is slightly oval and is 3cm long and 2.3cm wide. The partial treenail hole is 3cm in diameter. The intact metal nail hole is 1.2cm in diameter and the partial metal nail hole is 1.5cm in diameter. The damage is longer on the inboard side at 17.5cm long. A large knot is visible and 7cm long. The surface has one large crack.

The outboard side has patchy white covering which may possibly be sealing or covering.

Wood Science:

Slow grown, not straight grain

Possibly oak ✓

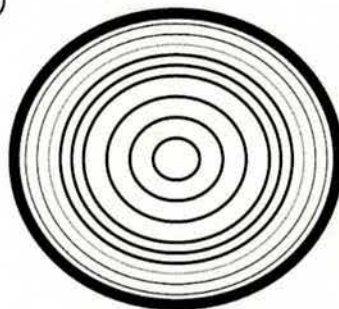
Bark Yes No

Sapwood Yes No

Knotty Yes No

Straight grained Yes No

Tangentially sawn?



Recommended action: [samples, additional photos, moulding, queries and problems]

Discarded.
 ▽ patch of shaft in related head is square

Checked: [corrections needed]

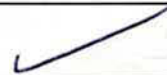
NA 11/5/10

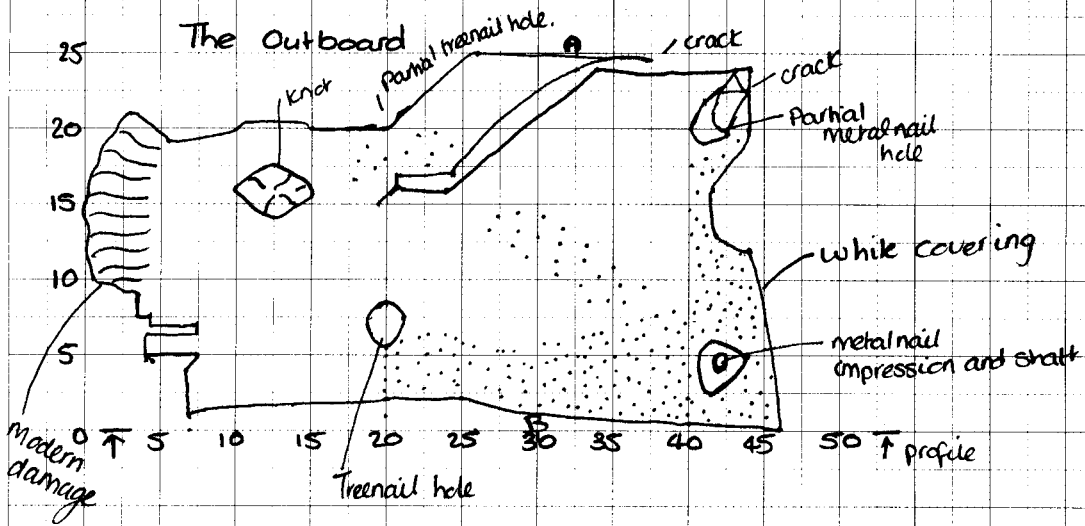
Cleaned:

Recorded:

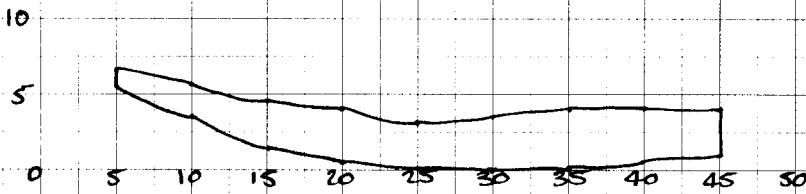
KS 14/4/10

Photos:

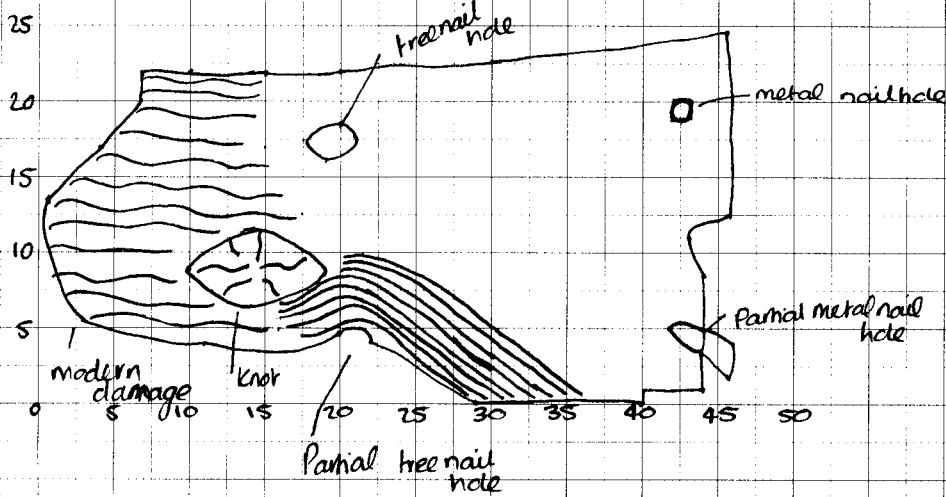




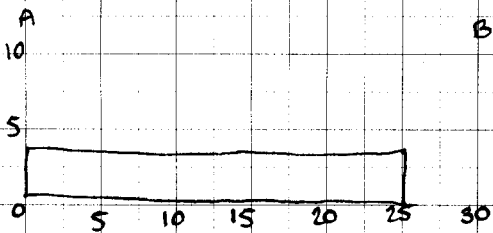
Profile



Inboard



Cross-Section



Scale 1:5