

Figure 1: Site Location 106, High Street, Worcester

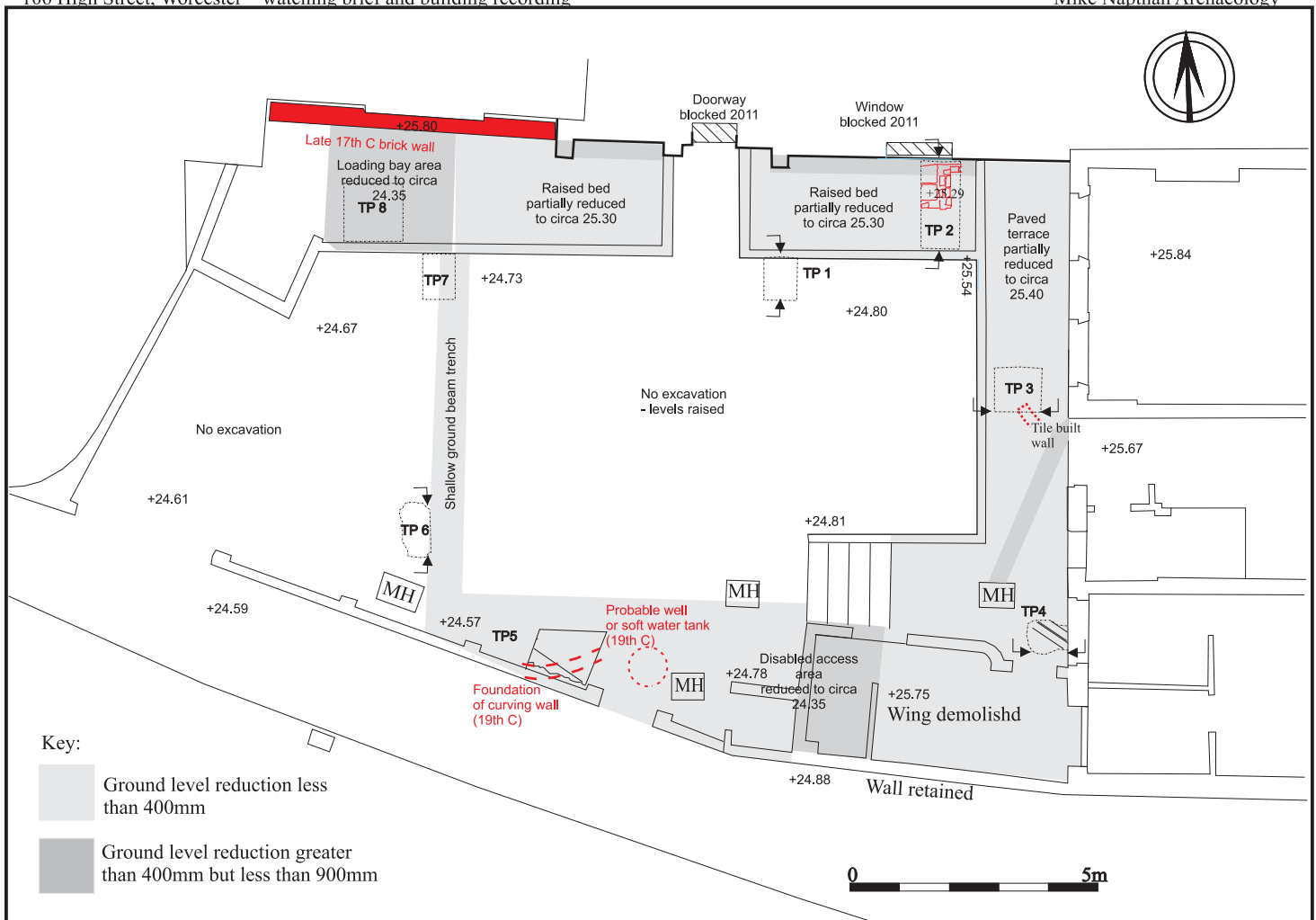
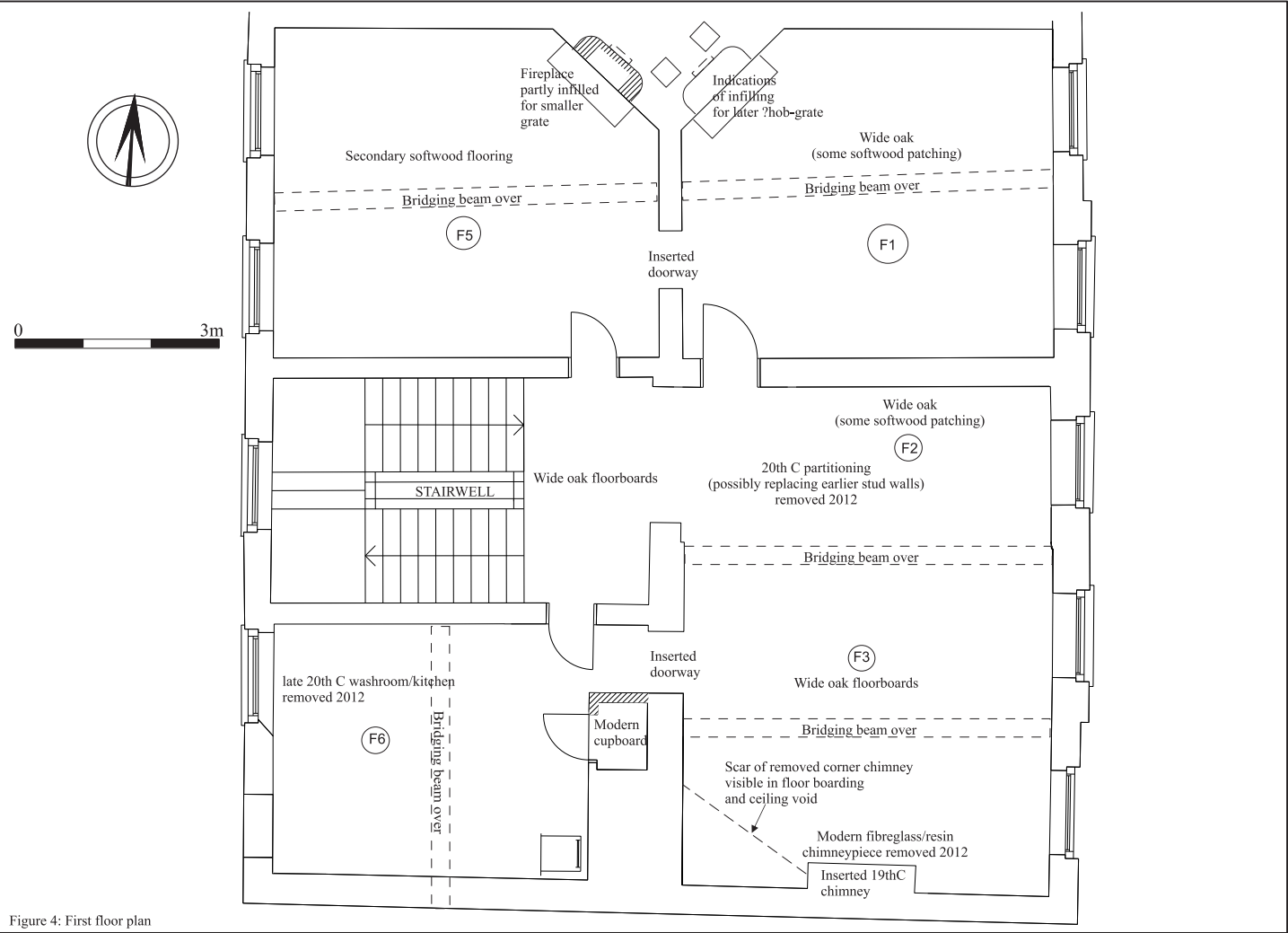


Figure 2: Plan of rear yard area, showing extent of groundworks and archaeologically significant features in red (including those in test pits)





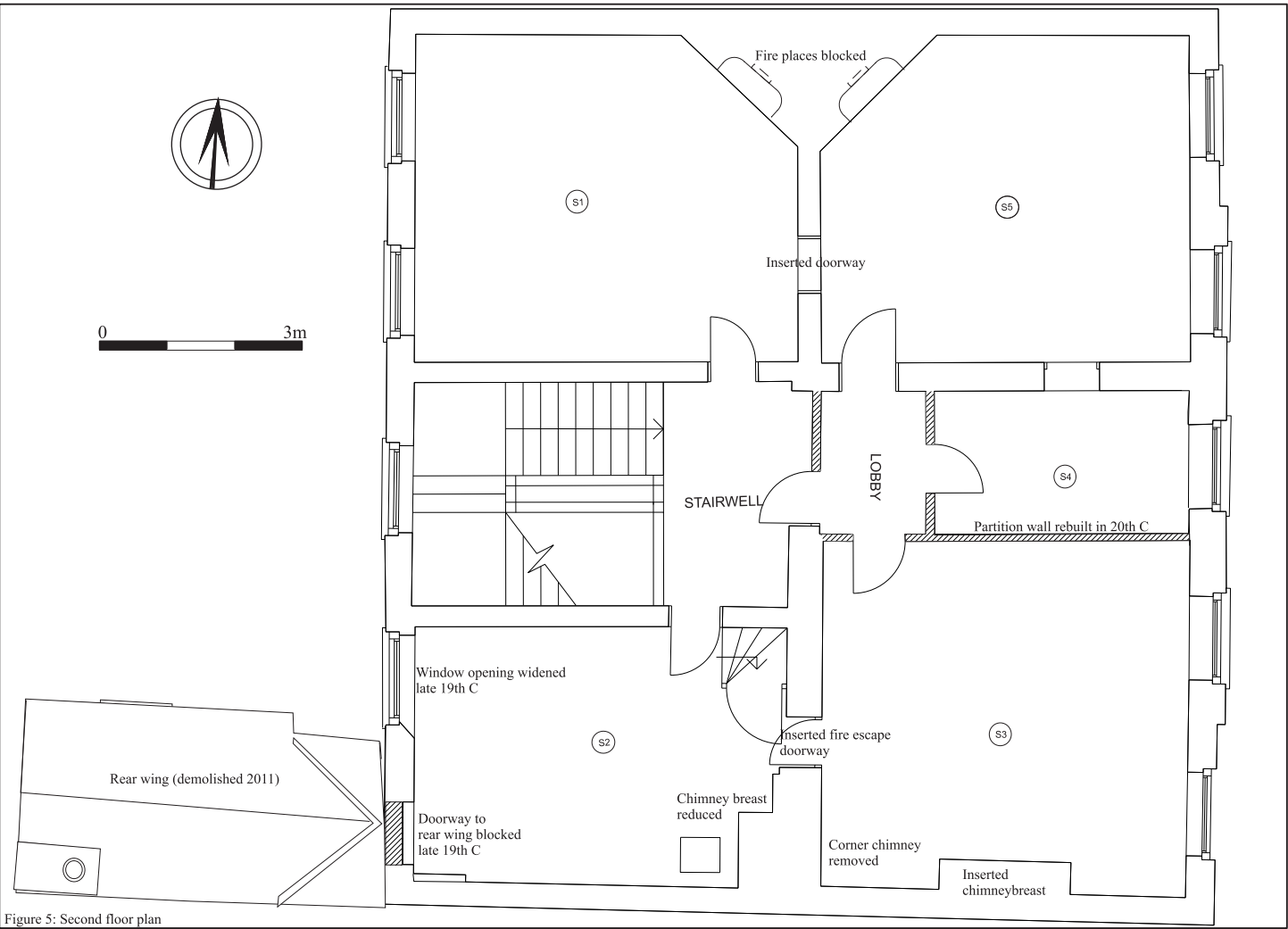
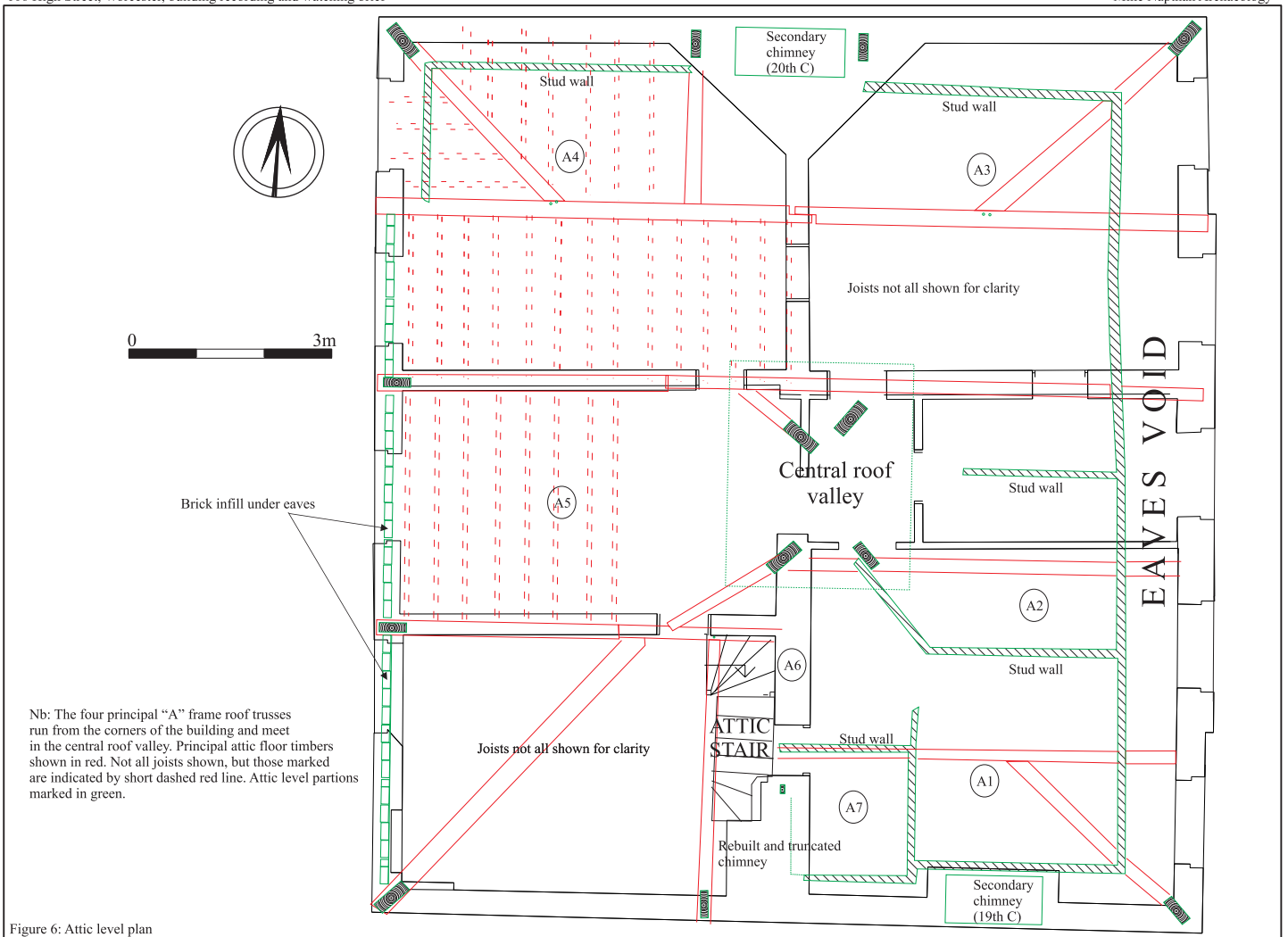


Figure 5: Second floor plan



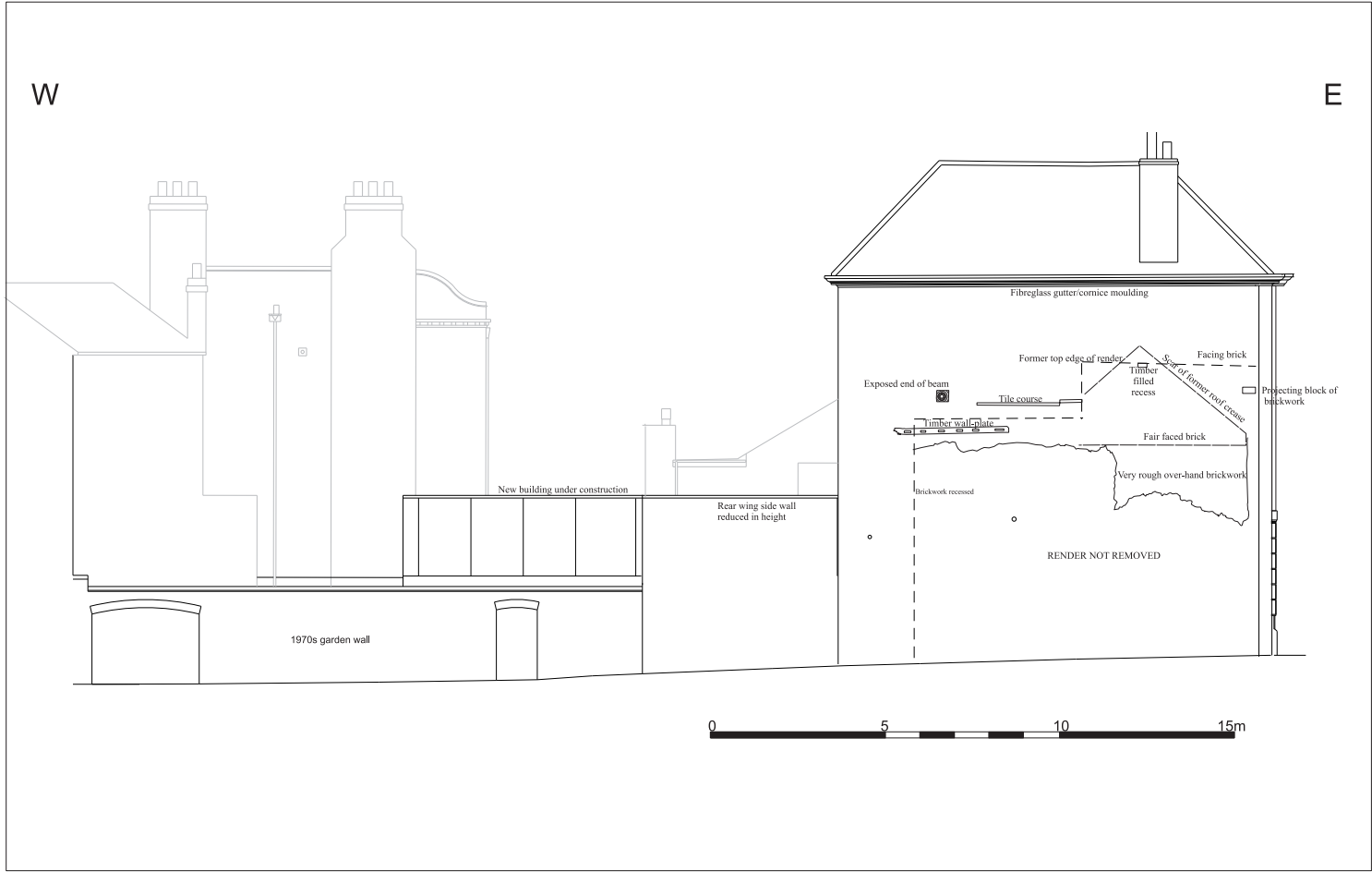


Figure 7: South facing elevation showing scar of former building at 107 High Street. No 106 had clearly been constructed against No 107, which clearly pre-dated it.

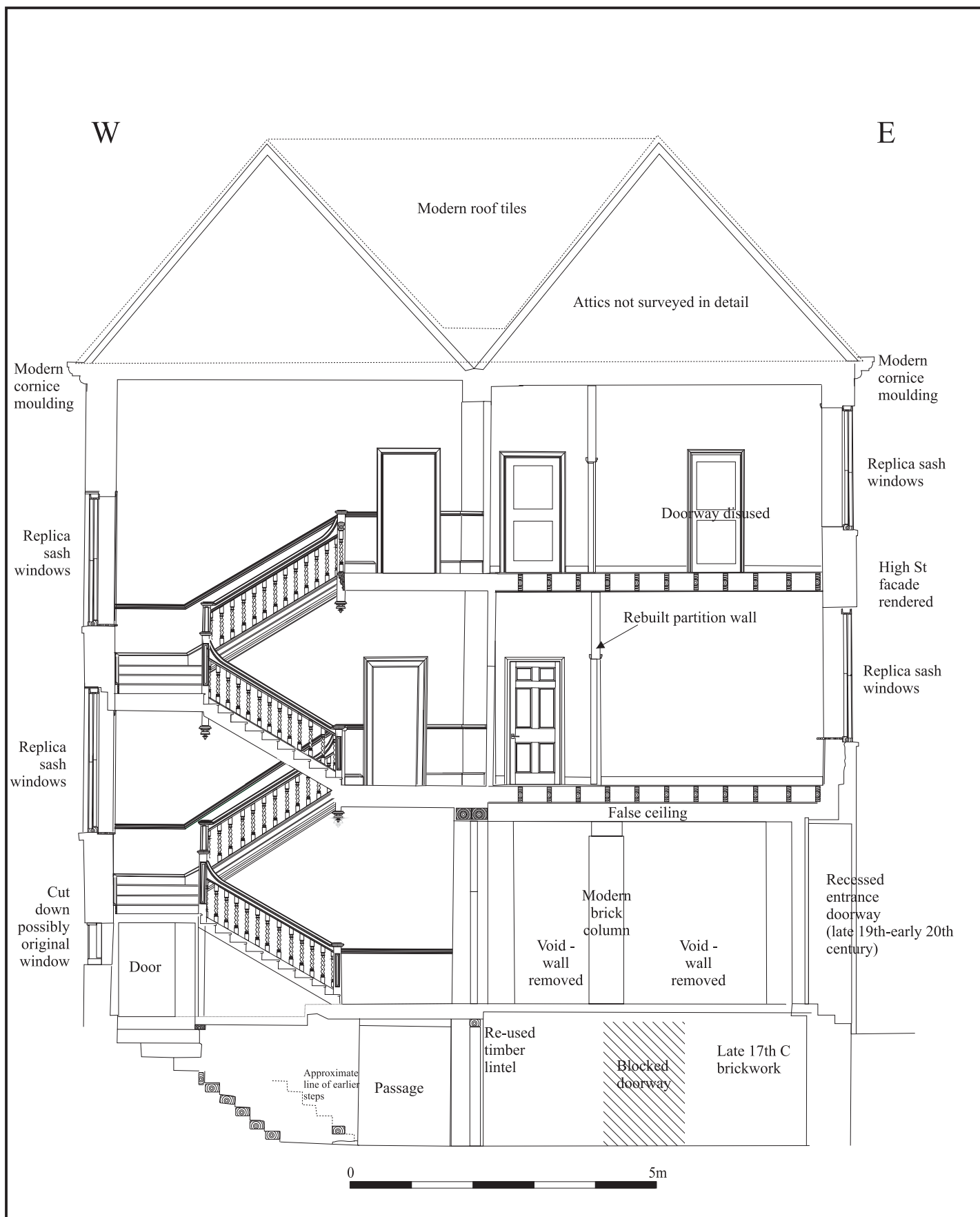


Figure 8: Composite section A-A viewed from south



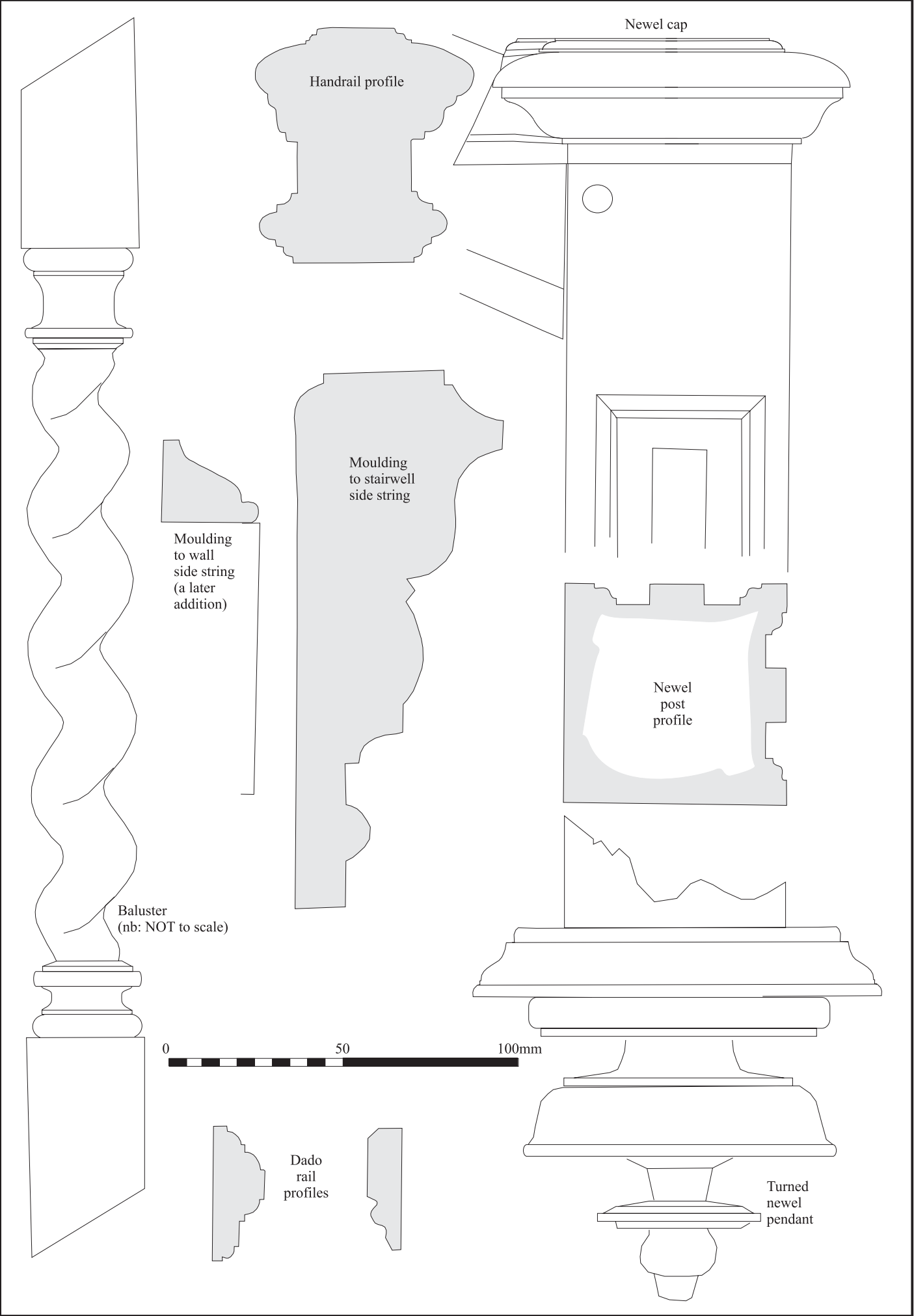


Figure 9: Stairwell details (to common scale except baluster)

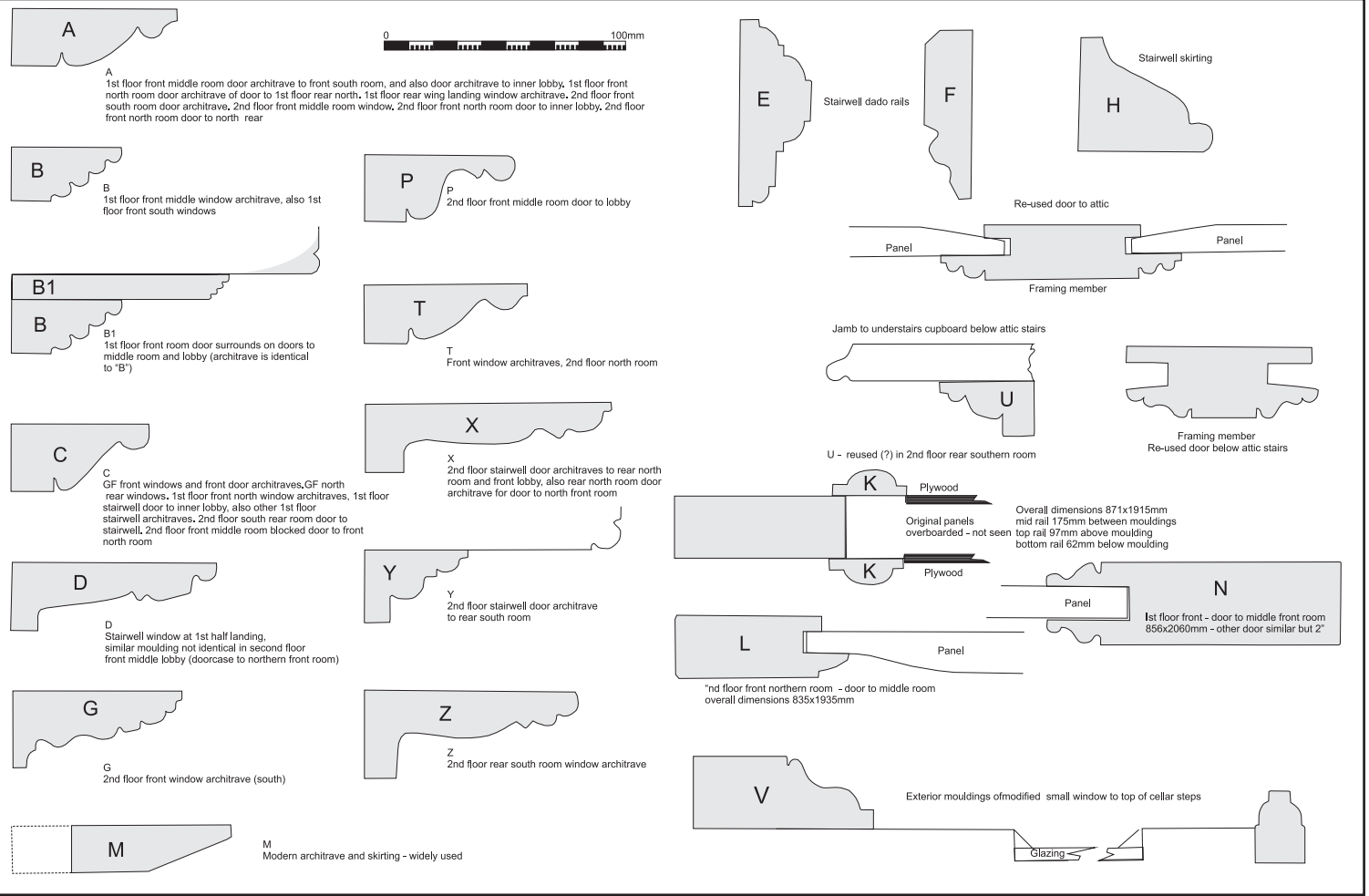


Figure 10: Profiles of principal variations of architrave and other mouldings

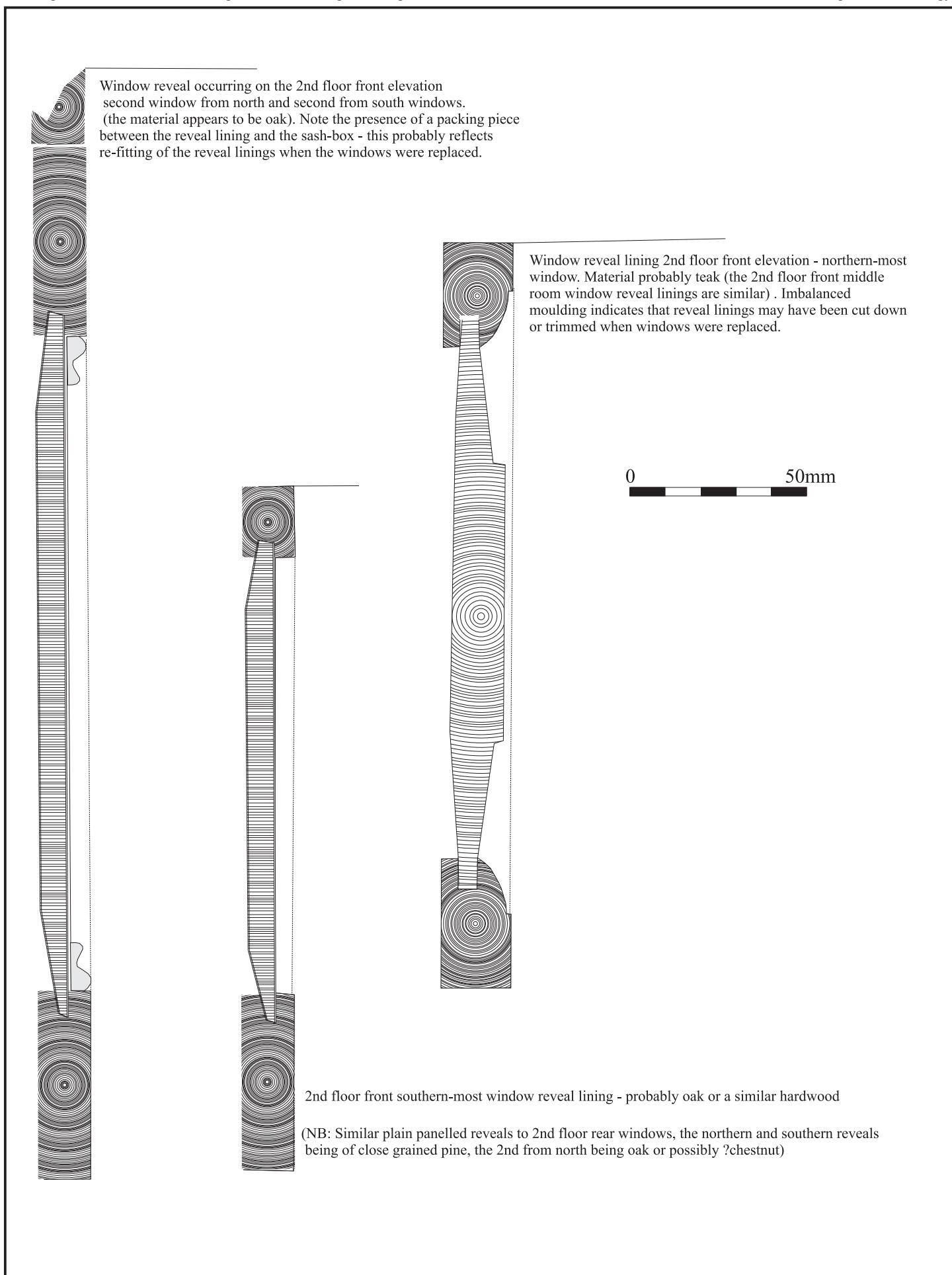


Figure 11: Original window reveal linings - note all linings appear to have been previously removed and replaced in a fairly adhoc manner - most appear to have been relocated as there are no major rooms that have a matching set. The other remaining linings are mostly plain (unpanelled) or replacements.

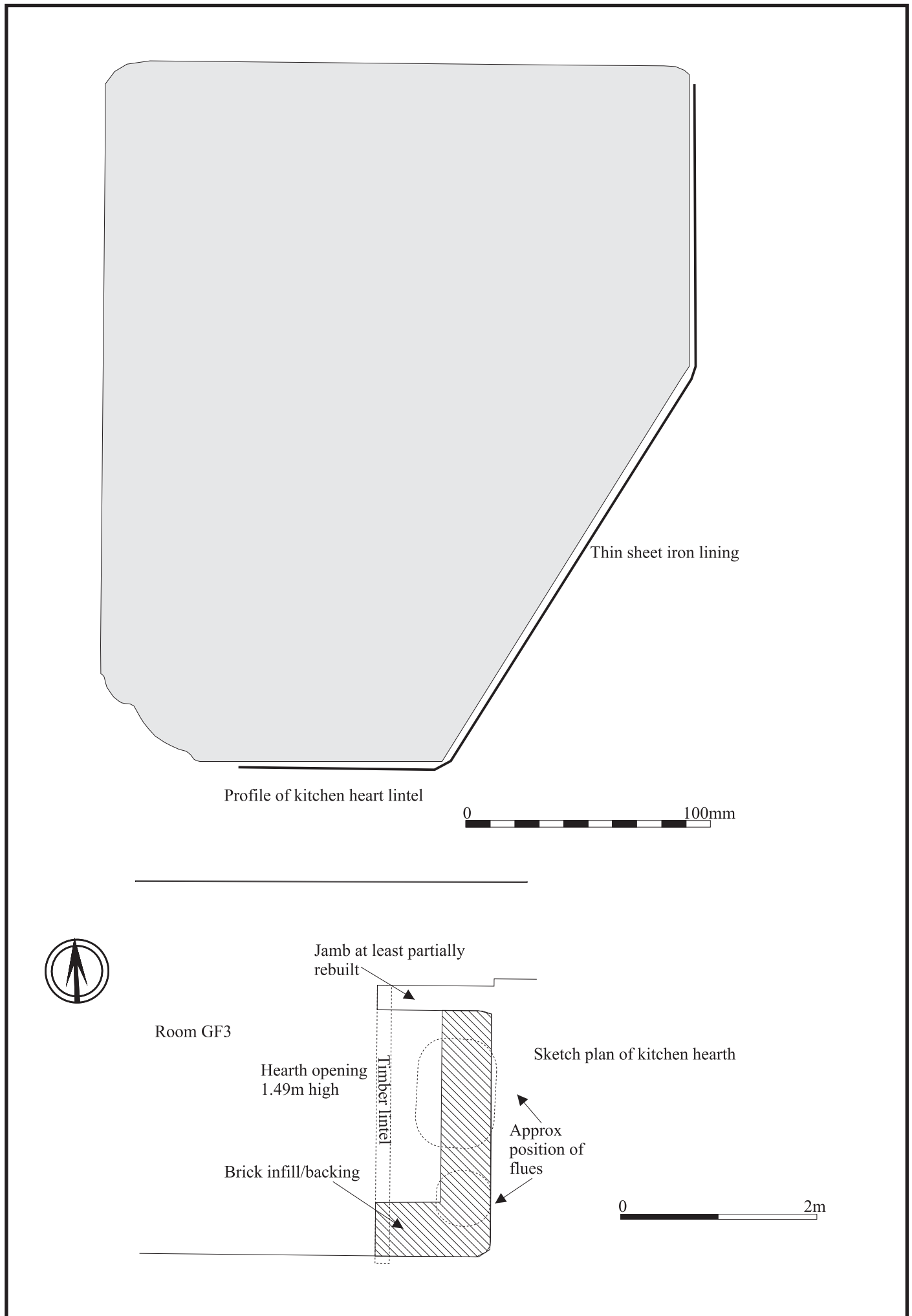


Figure 12: Details of kitchen hearth (see also Fig 13)



Figure 13: Details of historic fabric exposed at ground floor level





Figure 14: Details of main staircase structure