



Figure 16: Details of historic fabric exposed at first floor level



Figure 17: Details of historic fabric exposed at second floor level





Test pit 2, view facing north, showing stone and tile foundation



Test pit 3 view facing south, showing foundation of tile-built structure



Late 17th-early 18th C boundary wall exposed alongside 5 Deansway, note whitewashed plaster adhering in places



General view of level reduction on south side of yard - reduced dig was barely below level of carpark make-up



Foundation of northern boundary wall revealed in slot dug to facilitate damp-proofing



General view of reduced levels along former raised beds to N of carpark

Figure 18: Test pits and groundworks in former car-parking area.





Figure 19: Removal of rear wing.

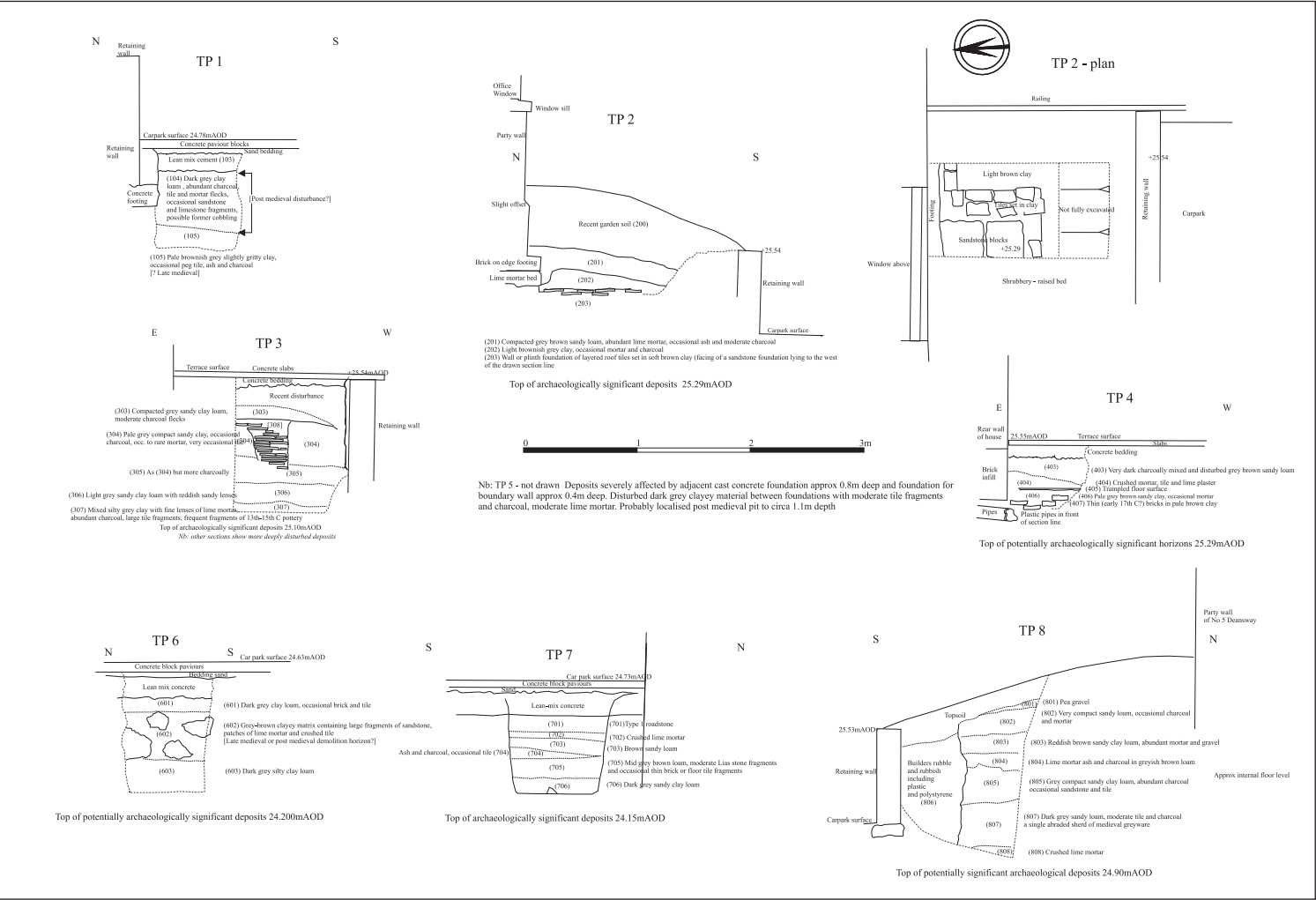


Figure 20: Section drawings of engineer's test pits rear of 106 High Street, Worcester

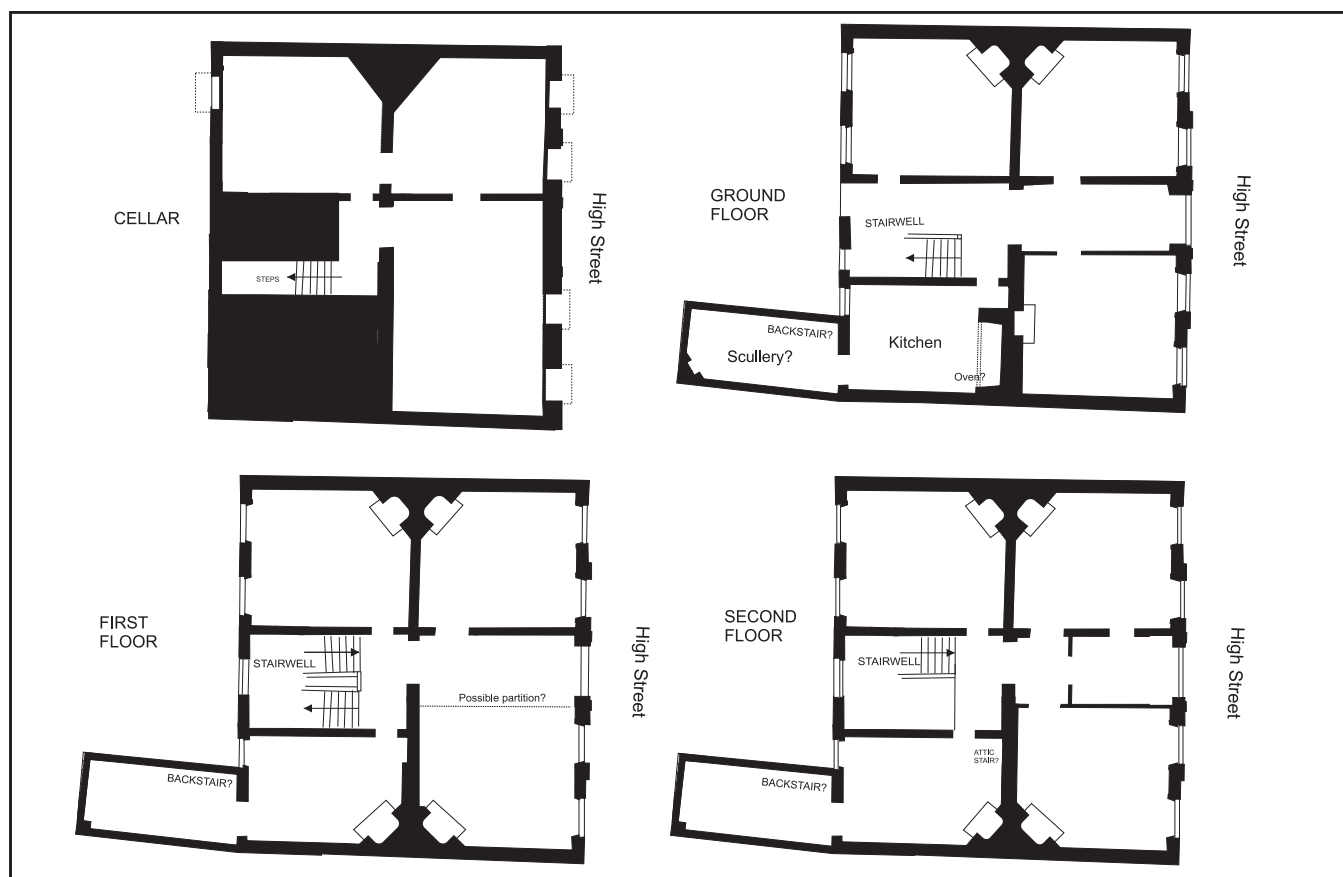


Figure 21: Reconstructed original 1690s floorplans of 106 High Street - nb original size of three storey rear wing estimated only